



**HAL**  
open science

## Is Self-Reported Risk Aversion Time Varying?

Seeun Jung, Carole Treibich

► **To cite this version:**

Seeun Jung, Carole Treibich. Is Self-Reported Risk Aversion Time Varying?. 2014. halshs-00965549v2

**HAL Id: halshs-00965549**

**<https://shs.hal.science/halshs-00965549v2>**

Preprint submitted on 19 May 2014

**HAL** is a multi-disciplinary open access archive for the deposit and dissemination of scientific research documents, whether they are published or not. The documents may come from teaching and research institutions in France or abroad, or from public or private research centers.

L'archive ouverte pluridisciplinaire **HAL**, est destinée au dépôt et à la diffusion de documents scientifiques de niveau recherche, publiés ou non, émanant des établissements d'enseignement et de recherche français ou étrangers, des laboratoires publics ou privés.



PARIS SCHOOL OF ECONOMICS  
ÉCOLE D'ÉCONOMIE DE PARIS

WORKING PAPER N° 2014 – 12

## Is Self-Reported Risk Aversion Time Variant?

Seeun Jung

Carole Treibich

JEL Codes: C33 ; D31 ; J11

Keywords: Risk Aversion; Panel Data



PARIS-JOURDAN SCIENCES ÉCONOMIQUES

48, Bd JOURDAN – E.N.S. – 75014 PARIS  
TÉL. : 33(0) 1 43 13 63 00 – FAX : 33 (0) 1 43 13 63 10  
[www.pse.ens.fr](http://www.pse.ens.fr)

# Is Self-Reported Risk Aversion Time Variant?

Seeun Jung\* and Carole Treibich†

## Abstract

We examine a Japanese Panel Survey in order to check whether self-reported risk aversion varies over time. In most panels, risk attitude variables are collected only once (found in only one survey wave), and it is assumed that self-reported risk aversion reflects the individual's time-invariant component of preferences toward risk. Nonetheless, the question could be asked as to whether the financial and macro shocks a person faces over his lifetime modify his risk aversion. Our empirical analysis provides evidence that risk aversion is composed of a time-variant part and shows that the variation cannot be ascribed to measurement error or noise given that it is related to income shocks. Taking into account the fact that there are time-variant factors in risk aversion, we investigate how often it is preferable to collect the risk aversion measure in long panel surveys. Our result suggests that the best predictor of current behavior is the average of risk aversion, where risk aversion is collected every two years. It is therefore advisable for risk aversion measures to be collected every two years in long panel surveys.

***JEL Classification:*** C33 ; D31 ; J11

***Keywords:*** Risk Aversion; Panel Data

---

\*Paris School of Economics, Science-Po Paris - seeun.jung@sciencespo.fr

†Paris School of Economics, Erasmus University Rotterdam and Aix-Marseille University (Aix-Marseille School of Economics), CNRS & EHESS - ctreibic@pse.ens.fr

# 1 Introduction

Is risk aversion innate and immutable, as is usually assumed in the economic literature, or rather time-variant and a function of a persons experiences over his lifetime? Basically, do individual preferences toward risk change with such events as wealth accumulation, disease, job loss and parenthood? Given that the psychology literature suggests that personality can change over time ([Lucas and Donnellan \(2011\)](#), [Boyce et al. \(2013\)](#)), we ask the question as to whether individual risk attitudes can also vary across the life span.

Risk preferences have been extensively used in empirical work to study individual decision-making. It is therefore vital to gain a better understanding of what surveys actually capture and whether this variable might vary across fields or over time. In other words, what researchers need to address when using risk attitudes taken from micro-level data surveys is the validity of the drawn risk aversion parameter. Although a great deal of empirical literature on this issue focuses on the measurement of risk tolerance and its stability across methodologies,<sup>1</sup> the question of the stability of risk aversion over time is assumed rather than proven empirically.<sup>2</sup> Nevertheless, the sensitivity of risk aversion to financial and personal shocks can be problematic since it could cause endogeneity or reverse causality issues when preferences toward risk are used as an explanatory variable. For example, imagine someone wins a lottery (positive income shock), which possibly drives down his risk aversion. If we only have one risk aversion measure, which was collected when he was more risk averse, the coefficient estimated taking this measure in order to predict current behavior would be biased toward zero (underestimation). So investigating whether risk attitudes are stable or changeable, and if they are changeable, finding these variations main factors are crucial steps if we are to make proper use of survey data.

---

<sup>1</sup>See for instance [Binswanger \(1980\)](#), [Anderson and Mellor \(2008\)](#), [Ding et al. \(2010\)](#), [Dohmen et al. \(2011\)](#) and [Hardeweg et al. \(2012\)](#)

<sup>2</sup>While [Harrison et al. \(2005\)](#), [Baucells and Villass \(2010\)](#), [Sahm \(2008\)](#), and [Andersen et al. \(2008\)](#) claim that risk aversion is stable over time, [Staw \(1976\)](#), [Thaler and Johnson \(1990\)](#), [Weber and Zuchel \(2005\)](#), [Brunnermeier and Nagel \(2008\)](#), and [Malmendier and Nagel \(2011\)](#) find a change in financial risk-taking behaviors over time.

The main problem researchers face when investigating the time stability of individual risk tolerance is data availability. In economic theory, risk aversion is assumed to be innate and time invariant, i.e. it is considered to be an exogenous characteristic of the person. This has led many surveys to include risk attitude questions only once: namely, at baseline, when the individual enters the database. This is, for instance, the case with the British Household Panel Study (BHPS) and the Korean Labor Income Panel Study (KLIPS). Nonetheless, some surveys do repeatedly measure risk attitudes. For example, the Health and Retirement Study (HRS) includes hypothetical gambles with respect to lifetime income in all its waves. [Sahm \(2008\)](#) uses this feature of the data to investigate the stability of individual risk tolerance.

In this article, we use the Osaka Panel Study where individuals were surveyed annually from 2003 to 2010 and risk aversion questions were included in all waves. This framework enables us to explore whether the risk aversion responses of individuals who experience shocks are stable. Basically, we set out to provide evidence of the existence of a time-variant component of risk aversion and to shed light on the factors that influence this aspect of risk preferences. Using panel data and a self-reported risk aversion measure, we find empirical evidence that (i) survey risk aversion has a time-variant dimension, and that (ii) individuals for whom elicited risk attitudes vary experience specific shocks not faced by agents with stable risk preferences. We believe that the expected, significant correlation between the observed variation in individual risk aversion and shocks (in terms of income, labor and personal belongings) provides convincing evidence of the existence of a time-variant component of risk aversion, possible measurement error (noise) aside. Basically, our results roughly show that (self-reported) risk aversion changes every year and is affected by income and health variations. This finding suggests that variation over time is more than merely noise, since it is correlated with recent shocks. Nevertheless, the variation in risk attitudes does not appear to significantly affect the change in risky behavior, i.e. the time-variant component of risk preferences might be temporary and

not large enough to change a persons behavior.

When collecting panel data, the assumption of risk aversion stability is used in support of the choice of measuring preferences toward risk only once (often during the first wave). However, given that there are time-varying factors in risk aversion, collecting risk aversion more than once could improve the quality of the analyses. Our findings show that using an average measure of risk aversion increases predictive power for current behaviors compared to the use of current risk aversion. It provides a guideline for longer panels: it could be useful to collect risk aversion several times, since the age factor and accumulation of changes in income and health also determine risk attitudes.

The remainder of the paper is organized as follows. The related literature is presented in section 2. Section 3 discusses the potential time-variant and time-invariant factors of risk aversion and presents the data used in this paper. The existence of a time-variant component is highlighted in section 4 along with the respective importance of the two dimensions of risk aversion. This section also provides evidence of optimal times for collecting risk aversion in panel surveys. Section 5 concludes.

## 2 Literature

Risk preference is a key factor put forward by economists to explain individual decisions. Many published articles have emphasized the influence of risk aversion on risky behaviors in financial matters (portfolio assets, savings and indebtedness), in the choice of occupation (sector of work and risky tasks) and in health (smoking and drinking). At the same time, the most suitable way of measuring risk aversion, which is not a directly observable individual characteristic, has been extensively investigated. A range of different methodologies have been used from qualitative scales and hypothetical questions to summated rating scores and lotteries. In addition to this methodological literature, many studies look at the stability of risk aversion across methodologies in order to see whether some

measures outperform others in their capacity to predict risky behaviors. Yet the stability of individual preferences toward risk over time has not really been investigated empirically. This could be due to: (i) the theoretical assumption that risk aversion is innate and immutable, and (ii) the lack of data available to study this issue.

In the theoretical models put forward by [Constantinides \(1990\)](#) and [Campbell and Cochrane \(1999\)](#), risk aversion varies with changes in wealth, habits and background risk. In a more recent consumption-based pricing model, [Brandt and Wang \(2003\)](#) included a time-varying aggregate risk aversion parameter and empirically tested whether aggregate risk preferences do indeed vary in response to news about inflation using DRI consumption data.

The empirical studies focusing on time-varying risk aversion consider different measures of risk aversion. [Brunnermeier and Nagel \(2008\)](#), for instance, used asset allocation to proxy risk preferences and found that transitory increases in liquid wealth play no role in explaining changes in asset allocation for households that participate in the stock market. [Guiso et al. \(2013\)](#) drew on a repeated survey of a large sample of Italian Bank customers to measure individual risk attitudes using a [Holt and Laury \(2002\)](#) strategy. Basically, respondents were asked to choose between a fixed lottery and different safe amounts.<sup>3,4</sup> They investigated its stability based on the 2008 financial crisis. These authors found that changes in risk aversion after the crisis were correlated with portfolio choices, but not with wealth, consumption habits or background risk. The authors subsequently conducted a lab experiment where participants were exposed to a horror movie. This experiment showed that this particular psychological factor - fear - could influence risk aversion to a greater extent than its ‘classical standard’ determinants. [Sahm \(2008\)](#) studied hypothetical gambles with lifetime income from the 1992-2002 Health and Re-

---

<sup>3</sup>In the risky outlook, individuals had a fifty percent chance of earning 10,000 euros and a fifty percent chance of earning nothing. The sure amounts of money offered ranged between 100 and 9,000 euros.

<sup>4</sup>Where [Holt and Laury \(2002\)](#) offered two lotteries with different pay-off spreads, [Hardeweg et al. \(2012\)](#) and [Dohmen et al. \(2010\)](#) also used a fixed lottery vs. safe amounts to capture the risk aversion of rural Thai farmers and German citizens respectively.

tirement Study to investigate whether individuals changed their risk aversion over that period. She found that risk tolerance changes with age and macroeconomic conditions, but argued that differences in risk aversion are mainly located across, and not within, individuals. She took a panel of 12,000 respondents covering a decade and found relatively stable risk preferences. She showed that major life events such as job displacement and the diagnosis of a serious health condition do not permanently alter the willingness to take further risks.

However, other studies have argued that individual risk tolerance can change following health shocks. [De Martino et al. \(2010\)](#) found that amygdala-damaged patients<sup>5</sup> take risky gambles more often than those without brain damage. [Tison et al. \(2012\)](#) also investigated the influence of health shocks on an individual's preferences toward risk. They found that some diseases do change people's risk preferences. Basically, they showed that cancer (as a threat to an individual's life and reduced life expectancy) increases risk tolerance while diabetes (a long-term disease with daily treatment) increases risk aversion. A question raised subsequently by the authors is whether the observed change in risk aversion endures in the future or whether it is merely a temporary alteration of risk attitudes, in which case risk aversion would eventually return to the individuals initial level.

In this paper, we use the information on risk aversion provided by the Osaka Panel Study. Like [Sahm \(2008\)](#), we investigate the existence and importance of a time-variant component of risk aversion. We show that variations in individual risk aversion are related to income and personal shocks. [Sahm \(2008\)](#) pointed out that a large proportion of risk aversion differences comes from differences across individuals, which implies that the time-variant component of risk preferences only plays a small role. We further investigate this dimension by studying whether variation in risk aversion is reflected by a change in individual risky behaviors. We find that risk aversion indeed contains both time-invariant and time-variant factors. Time-variant factors are correlated with various changes such

---

<sup>5</sup>Amygdala is a part of the brain associated with emotional events.



as income and age, which provides evidence that variations in risk aversion over time are not just noise. That is why risk aversion measures collected back in time (more than five years previously in our sample) do not predict current behavior well enough to see its effect. We will discuss this in Section 4.

### 3 Methodology and Data

#### Time-invariant and time-variant components of risk aversion

Table 1 presents the factors involved in the different explanations of risk aversion. Basically, we decompose risk aversion into a time-invariant and a time-variant component. Whereas the former may be determined by family background and early childhood education, the latter could be the result of shocks and experiences faced by individuals over their lives. Ethnicity and gender are dictated by birth. It has been widely proven that gender partially explains the difference in risk aversion (Croson and Gneezy (2009) and Bertrand (2011)). There are two aspects that may explain why women are more risk averse than men: (i) women are innately/inherently more risk averse than men at birth, (ii) their socialization in the society in which they live makes them become more risk averse. Furthermore, pre-adulthood, risk aversion may be influenced by family background, early childhood education and social norms. In other words, risk aversion can be affected when individuals are building their identities and personalities. For example, individuals raised in a conservative society tend to declare a higher level of risk aversion. The samples used to measure risk aversion from surveys are generally made up of adults. So in this case, the two factors that are innate characteristics and childhood socialization can be treated as time-invariant factors. However, time-variant factors include socio-demographic characteristics and shocks that can vary over time. Risk aversion varies with age: the older an individual, the more risk averse (Tymula et al. (2013)). Moreover, when an unexpected negative event, such as a health shock (accident or disease) or an income shock (job loss), happens to someone, this person might be expected to

become more risk averse due to the experience of a negative situation affecting his initial wealth (Kihlstrom et al. (1981)). In our paper, we discuss the formation of the risk aversion function considering both time-variant and time-invariant factors. We then look at which factor explains most of the risk-related behaviors.

Table 1: Factors Influencing the Different Dimensions of Risk Aversion

<b>Time-invariant</b>		<b>Time-variant</b>
innate/physical	social/early childhood	
ethnicity	family background	<b>socio-demographic characteristics</b>
gender	initial education	- age/vocational training
		- health status
		- occupational characteristics
		(seniority in a sector, job security level, type of wage)
		<b>shocks</b>
		- income/debt/loan/inheritance
		- marriage/child birth/relative's death
		- labor/sector/occupation/unemployment
		- social group, community, peer intervention
		- health

## Data

Our investigation into the instability of risk aversion uses data collected by the University of Osaka, Ritsumeikan University, and Waseda University in Japan. This survey was launched<sup>6</sup> in order to study the influence of economic behavior on preferences and degrees of life satisfaction. A representative sample was chosen by means of random sampling. Detailed information was collected every year from 2003 to 2010 (eight waves).<sup>7</sup>

<sup>6</sup>This survey was launched by Yoshiro Tsutsui, University of Osaka.

<sup>7</sup>All municipalities were classed into ten areas (1.Hokkaido, 2.Touhoku, 3.Kantou, 4.Koushinetsu, 5.Hokuriku, 6.Toukai, 7.Kinki, 8.Chugoku, 9.Shikoku, and 10.Kyushu). In each area, the municipalities were then divided into four categories corresponding to their population sizes (1.Seirei shitei toshi: A city designated by government ordinance, 2. A city with 100 thousand people or more, 3. A city with less than 100 thousand people, 4.A town or village). This gave a total of 40 strata. The number of observations in an area was determined based on a 20-to-69-year-old population and city size.

- Sampling Spot Selection (First Sampling Unit)

- 1) The sampling unit for the first stage (FSU) was the census unit set up by the last census.
- 2) Sampling spots were distributed based on population (approximately 15 samples per spot).
- 3) The sampling interval was calculated within each stratum (total population in the stratum/ number

The same individuals were interviewed *face-to-face* over this period, which means we can control for unobserved heterogeneity using a panel dataset. In addition to extensive socio-demographic data (age, gender, religion, marital status and education) and economic information (occupational characteristics, income and consumption expenditure), respondents were asked to provide data on risky choices in finance (assets, loans and gambles) and health (exercise, smoking, drinking, height and weight). The survey also included gambling or lottery questions to collect data on individual risk preferences. Unfortunately, the precise formulation of these gambling or lottery questions changed from one survey wave to the next. Yet the formulation of the few self-reported risk aversion questions remained the same from one year to another, such that we were able to use them in our panel analysis.

Table 2 presents a simple descriptive statistics summary of respondents' characteristics for each wave. On average, we observe more women (over 50%) in the sample, and the average age is around 50 years old. The panel is unbalanced as some individuals were lost over the years and new participants were recruited in 2004, 2006 and 2009. Basically, the oldest respondents drop out from the sample.<sup>8</sup> The people in the sample have 1.3 children on average, and more than half of them are gainfully employed. More than half of the Japanese people take part in some type of gambling<sup>9</sup>. More than half of the

---

of FSUs in the stratum). FSUs were determined by systematic sampling.

4) Each municipality in each stratum was ordered with a municipality code determined by government.

-Selection of Individuals

Some 15 observations were randomly sampled by systematic sampling in each spot (FSU). The sampling interval varied by inhabitant list arrangement type.

-Selection of New Sampling Spots

Sampling spots, covering 4,600 new samples in the second survey (2003), were taken on a continuous basis from the previous survey (first survey in 2002), and the remaining spots needed were selected by the above method (First Sampling Unit)

-Use of Residential Map for Sampling in a Field

Quota sampling based on sex and age in each sampling spot was applied to the selection of 6,000 new samples in the 2009 wave since the official inhabitant list was not available. The sampling spots were taken on a continuous basis from the previous survey, and households were selected by systematic sampling using a residential map.

<sup>8</sup>This explains why the average age does not increase between 2003 and 2004. In addition, more male participants quit over the years through to 2008. In 2009, more men and more educated/employed participants were newly recruited into the sample.

<sup>9</sup>The British Gambling Prevalence Survey found that 73% of the British adult population (aged 16 and over) participated in some form of gambling in 2009. This is equivalent to around 35.5 million adults.

Table 2: Descriptive Statistics: Yearly

	2003	2004	2005	2006	2007	2008	2009	2010
Female	0.511 (0.500)	0.527 (0.499)	0.531 (0.499)	0.529 (0.499)	0.534 (0.499)	0.541 (0.498)	0.530 (0.499)	0.532 (0.499)
Age (in years)	49.14 (12.74)	49.07 (12.97)	50.07 (12.97)	50.23 (13.11)	51.44 (12.85)	52.70 (12.66)	49.96 (13.31)	51.23 (13.15)
Education (in years)	12.60 (2.12)	12.67 (2.14)	12.67 (2.27)	12.73 (2.29)	12.77 (2.25)	12.78 (2.25)	13.02 (2.22)	13.07 (2.20)
Income (in mil Yen)	3.49 (0.34)	3.56 (0.35)	3.69 (0.35)	3.73 (0.34)	3.79 (0.34)	3.81 (0.33)	3.73 (0.33)	3.84 (0.32)
Married	0.760 (0.428)	0.774 (0.419)	0.791 (0.407)	0.786 (0.410)	0.795 (0.404)	0.805 (0.396)	0.786 (0.410)	0.798 (0.402)
Children	1.252 (1.135)	1.294 (1.094)	1.326 (1.119)	1.324 (1.146)	1.375 (1.139)	1.411 (1.119)	1.386 (1.127)	1.436 (1.144)
Working	0.561 (0.496)	0.576 (0.494)	0.573 (0.495)	0.583 (0.493)	0.582 (0.493)	0.575 (0.494)	0.673 (0.469)	0.647 (0.478)
Gamble	0.571 (0.495)	0.605 (0.489)	0.624 (0.484)	0.586 (0.493)	0.606 (0.489)	0.592 (0.491)	0.605 (0.489)	0.703 (0.457)
Smoke	0.345 (0.484)	0.316 (0.476)	0.306 (0.473)	0.288 (0.463)	0.276 (0.500)	0.254 (0.500)	0.260 (0.500)	0.244 (0.500)
Drink	0.572 (0.408)	0.561 (0.416)	0.566 (0.415)	0.556 (0.410)	0.564 (0.402)	0.558 (0.398)	0.554 (0.401)	0.531 (0.426)
<i>Observations</i>	<i>1,418</i>	<i>4,224</i>	<i>2,987</i>	<i>3,763</i>	<i>3,112</i>	<i>2,731</i>	<i>6,181</i>	<i>5,386</i>
<i>New Entry</i>		<i>3,161</i>	<i>0</i>	<i>1,391</i>	<i>0</i>	<i>0</i>	<i>3,706</i>	<i>0</i>
<i>Quit</i>	<i>355</i>	<i>1,236</i>	<i>621</i>	<i>651</i>	<i>381</i>	<i>255</i>	<i>797</i>	

*Notes:* Standard Deviations in Parentheses. Annual Income is provided in millions of Yen.

sample (56%) reports that they drink, whereas the smoking rate is relatively low among the interviewees (less than 35%).<sup>10</sup> The data seem stable in terms of the individual consistency of reporting. For example, 87% of the participants reported almost the same height allowing 1cm difference every year. About 95% of the sample reported their height within 2cm variance. Hence, we could rely on the yearly measures in this panel.

Table 3 presents a pairwise correlation matrix on the socio-demographic variables and risk-related behaviors. Women are less likely to be employed as wage-earners, but rather to be self-employed. All the following indicators are lower for women compared to men: investment in risky assets, gambling, smoking and drinking habits. Family background (father's and mother's education variables) is correlated with a number of choices: (i)

<sup>10</sup>The World Health Organizations 2005 Global Infobase reports that the Japanese smoking rate ranked 44th in the world (about 33.1%), behind Germany (35%) and France (34.1%), but higher than other English-speaking countries (Australia 19.5%). However, the smoking rate declined worldwide in 2010: France (23.3%), Germany (21.9%), United Kingdom (21.5%), and EU27 (23%).

Table 3: Pairwise Correlation between Socio-Demographics and (Risky) Behaviors

	Occupational Choices			Financial Choices		Risky Behaviors				
	Employed	Public	Self-Employed	Debt	Risky Asset	Gamble	Smoke	Heavy Smoker	Drink	Heavy Drinker
Woman	-0.343*	-0.002	0.056*	-0.016	-0.031*	-0.190*	-0.457*	-0.314*	-0.344*	-0.293*
Mother's Edu	0.061*	0.017	-0.110*	0.043*	0.029*	-0.051*	-0.055*	-0.056*	-0.002	-0.083*
Father's Edu	0.009	0.037*	-0.106*	0.002	0.060*	-0.044*	-0.061*	-0.066*	-0.003	-0.076*
Education	0.125*	0.174*	-0.181*	0.050*	0.094*	-0.034*	-0.027*	-0.061*	0.087*	-0.042*
Age	-0.229*	0.032*	0.243*	-0.245*	0.172*	-0.013	0.010	-0.040*	-0.040*	0.066*
Married	-0.078*	0.103*	0.089*	0.104*	0.031*	0.009	0.039*	-0.029*	0.042*	0.069*
Have Children	-0.090*	0.073*	0.099*	0.092*	0.029*	0.005	0.025*	-0.032*	-0.003	0.066*

Note: \* 5% significance.

parents' education raises employment and reduces self-employment, (ii) it is positively correlated with debts and investment in risky assets,<sup>11</sup> and (iii) it is negatively correlated with the childrens gambling, smoking, and drinking behavior. Education *per se* has a similar impact as the parents' education: it is positively correlated with employment, and negatively correlated with self-employment. A wealth effect seems to run through both parental and personal education: they are both correlated positively with financial choices. In addition, people with higher education tend to gamble and smoke less, whereas they tend to drink more. Yet, if we look at the heavy drinkers, this factor is negatively correlated with education, suggesting that more highly educated people do drink more often, but moderately. Lastly, people are both less employed and less employable as they get older, leading to more self-employment.

## 4 Empirical analysis

The purpose of this paper is to investigate the stability of risk aversion over time in order to derive recommendations for survey data collection. In particular, our analysis provides evidence in favor of a periodic collection of risk aversion, rather than systematically or solely at baseline.

The empirical analysis starts with evidence on the validity of our preferred risk aversion measure: self-assessment of own risk aversion. We then provide proof that risk

<sup>11</sup>However, the correlation with financial choices is due mainly to the wealth effect as more education in turn increases wealth.

aversion is made up of a time-variant part, and show that the variation cannot amount to measurement error or noise given that it is related to income and health shocks. Lastly, we investigate whether or not the variation in risk aversion finds expression in a change in individuals' risky behavior.

## 4.1 Validity of our risk aversion measure

There is much discussion of risk aversion measurement in the literature and many different methodologies have been proposed. At the core of choices made by survey designers is a trade-off between measurement accuracy and data collection practicality.

Many different methodologies widely used in the literature have been taken up for the Osaka Panel Data: self-reported risk aversion in general, income prospect choices, lotteries, and the “taking an umbrella” question. Unfortunately, the formulation of some of these questions varies from one year to the next, preventing us from making use of this wide range of measures. Self-reported risk aversion is actually one of the few methods that remains the same across all the questionnaires. [Dohmen et al. \(2010\)](#) and [Hardeweg et al. \(2012\)](#) draw on German and Thai data to show that survey data outperform experimental measures, such as real pay-out lotteries, when it comes to predicting risky behaviors. In addition to the previous evidence in favor of this type of risk aversion measure, we show below that measures of individual risk aversion are actually highly correlated with one another.

In this section, we present the different methodologies used in the Osaka Panel Study. Three main methodologies are actually used: (i) income prospect choices ([Barsky et al., 1997](#)), (ii) willingness to pay for lottery tickets, and (iii) self-reported risk aversion. With the exception of the self-reported risk aversion measure, some of the risk aversion questions vary somewhat across survey waves. While the wording remains the same in most cases, the probabilities and amounts offered differ. Below, we report the questions used in the 2006 wave.

## Barsky et al. (1997)'s measure

This first measure is based on hypothetical choices between betting on doubling current income with some risk of having it cut by a certain percentage or benefiting from a small, but constant increase in current income.

Respondents were asked two sets of questions along these lines. We present one of them below. The other one differs merely by the size of the income loss.

1. *“In which of the following two ways would you prefer to receive your monthly income? Assume that your job assignment is the same for each scenario.”*

(a) Your monthly income has a 50% chance of doubling, but also has 50% chance of decreasing by **30%** → answer question 2.

(b) Your monthly income is guaranteed to increase by 5% → answer question 3.

2. *“Of the following two jobs, which would you prefer?”*

(a) Your monthly income has a 50% chance of doubling, but also has 50% chance of decreasing by **50%**

(b) Your monthly income is guaranteed to increase by 5%

3. *“Of the following two jobs, which would you prefer?”*

(a) Your monthly income has a 50% chance of doubling, but also has 50% chance of decreasing by **10%**

(b) Your monthly income is guaranteed to increase by 5%

The answers given by participants are classed in four different groups. A four-category variable of risk aversion can thus be built. The latter is increasing with risk aversion and takes the following values: 1 if the respondent answered (a) to question 1 and (a) to question 2; 2 if he answered (a) to question 1, but (b) to question 2; 3 if he answered (b) to question 1 and (a) to question 3, and finally 4 if he answered (b) to both questions 1 and 3.

## Reservation prices

The second methodology used to derive individuals' preferences towards risk draws on an individual's willingness to pay for a lottery ticket.

Respondents were asked three sets of questions along these lines. We present one of them below. The second one differs by the percentage chance of winning the lottery (1%) and the gain (100,000 yen). The third is based on the same lottery as the first set of questions, but the individual is now in the position of selling the ticket instead of purchasing it.

1. *“Let's assume there is a lottery with a 50% chance of winning 2,000 yen and a 50% chance of winning nothing. If the lottery ticket is sold for 200 yen, would you purchase a ticket?”*
  - (a) I would purchase a ticket → answer question 2
  - (b) I wouldn't purchase a ticket → answer question 3
  
2. *“What is the most you would pay to purchase the lottery ticket mentioned in question 1?”*
  - (a) Purchase if the price is less than 300 yen
  - (b) Purchase if the price is less than 400 yen
  - (c) Purchase if the price is less than 600 yen
  - (d) Purchase if the price is less than 1,000 yen
  - (e) Purchase if the price is less than 2,000 yen
  - (f) Purchase even if the price is more than 2,000 yen
  
3. *“If the price of the lottery ticket was lowered, would you purchase it if...”*
  - (a) The price is less than 190 yen
  - (b) The price is less than 150 yen



- (c) The price is less than 100 yen
- (d) The price is less than 50 yen
- (e) The price is less than 1 yen
- (f) Wouldn't purchase even if the price is 1 yen

Based on the answers provided, all respondents can be classed by their level of risk aversion in a 12-category variable that is increasing with risk aversion. This variable takes value 1 for the participants who replied (a) to question 1 and (f) to question 2, and value 12 for individuals who said they would not purchase such a ticket even if the price were only 1 yen (i.e. option (b) in question 1 and option (f) in question 3).

## Self-reported risk aversion

Eleven-ladder Likert scales were used in the three risk aversion questions. The formulations used are reported hereafter. All the scales have been reversed in order to obtain variables that are increasing with risk aversion.

**The “wise man” question - self-reported risk aversion in general** *“As the proverb says, “Nothing ventured, nothing gained”, there is a way of thinking that in order to achieve results, you need to take risks. On the other hand, as another proverb says, “A wise man never courts danger”, meaning that you should avoid risks as much as possible. Which way of thinking is closest to the way you think? On a scale of 0-10, with 10 being completely in agreement with the thinking “Nothing ventured, nothing gained”, and 0 being completely in agreement with the thinking “A wise man never courts danger”, please rate your behavioral pattern.”*

**The “cautiousness” question** *“When you usually go out, are you cautious of locking doors/windows and turning off appliances to prevent a fire? On a scale of 0-10 with 10 being the “last person to be cautious”, and 0 being the “most cautious”, please rate your level of cautiousness.”*

**The “umbrella” question** “When you usually go out, how high does the probability of rain have to be before you take an umbrella?”

Table 4: Pairwise Correlation between Different Risk-Aversion Measures

	(1)	(2)	(3)	(4)	(5)	(6)	(7)
<b>Barsky RA measures</b>							
inc. prospect choice #1 (1)	1.000						
inc. prospect choice #2 (2)	0.636***	1.000					
<b>Lotteries</b>							
RA lottery #1 (3)	0.118***	0.120***	1.000				
RA lottery #2 (4)	0.107***	0.163***	0.587***	1.000			
<b>Self-declared risk aversion</b>							
SRRA in general (5)	0.135***	0.085***	0.129***	0.1409***	1.000		
caution (6)	0.030	0.024	0.046**	0.051**	0.1725***	1.000	
umbrella question (7)	0.059**	0.041*	0.042*	0.013	0.089***	0.089***	1.000

Notes: \*\*\* 1%, \*\* 5% and \* 10% significance.

Table 4 reports the pairwise correlations between different types of risk aversion measures. We could compare the three different measures of risk aversion. All the described measures increase with risk aversion: a more risk-averse individual gets a higher value for each variable. All methods are significantly and positively correlated with one another. From Table 4, we note that the variable for self-reported risk aversion (SRRA hereafter) in general is positively correlated with all the other measures. Based on this observation and given the formulation issues we face with the other methodologies, we use SRRA as a good proxy for individuals’ preferences towards risk in our study.

Table 5: Pairwise Correlation between Risk Aversion and Socio-Demographics

	Woman	Mother’s Edu	Father’s Edu	Education	Age	Married	Have Children
SRRA in general	0.116*	-0.070*	-0.055*	-0.064*	0.098*	-0.059*	0.045*
expected sign	+	-	-	-	+	?	+

Notes: \* 5% significance.

From Table 5, we note that self-declared risk aversion is positively correlated with being a woman, being older and having children. It is negatively correlated with own education, parents’ education and being married. All these results are in line with the existing literature.<sup>12</sup>

<sup>12</sup>However, education could be an endogenous choice, which could also be affected by the agent’s risk

Table 6: Pairwise Correlation between Current Risk Aversion and (Risky) Behaviors

	SRRA in general	expected sign
<b>occupational choices</b>		
employed	-0.136*	-
public sector	0.0194	+
self-employed	-0.019	-
<b>financial choices</b>		
debt	-0.038*	-
risky asset	-0.080*	-
<b>risky behaviors</b>		
gamble	-0.101*	-
smoke	-0.127*	-
heavy smoker	-0.093*	-
drink	-0.092*	-
heavy drinker	-0.044*	-

*Note:* \* 5% significance.

Table 6 presents the pairwise correlations between current self-reported risk aversion and risky behaviors. All our results are consistent with the expected sign. Basically, self-assessed risk aversion is negatively correlated with health-related risky behaviors (such as smoking and drinking) and financial choices (such as debt and holding risky assets). Regarding occupational choices, the expected positive relation between public sector and risk aversion, on one side, and the negative association between risk aversion and self-employment, on the other side, are found but are not significant at the standard 5% level.

In view of these simple correlations between our risk aversion measures, socio-demographics and risky behaviors, it would appear that the self-assessed risk aversion variable is correlated with socio-demographics with the expected sign and capturing individual behavior well. We thus retain this measure for the core of our analysis.

---

aversion level and the level of education of his parents.

## 4.2 Variation of risk aversion over time

Unlike many panel surveys that collect risk aversion information at baseline only, Osaka University Panel Data respondents were asked questions about their risk aversion every year. This feature of our data enables us to investigate the stability of individuals' responses over time.

Figure 1: Variation of Declared Risk Aversion : One Year Lag  $\Delta RA = RA_t - RA_{t-1}$

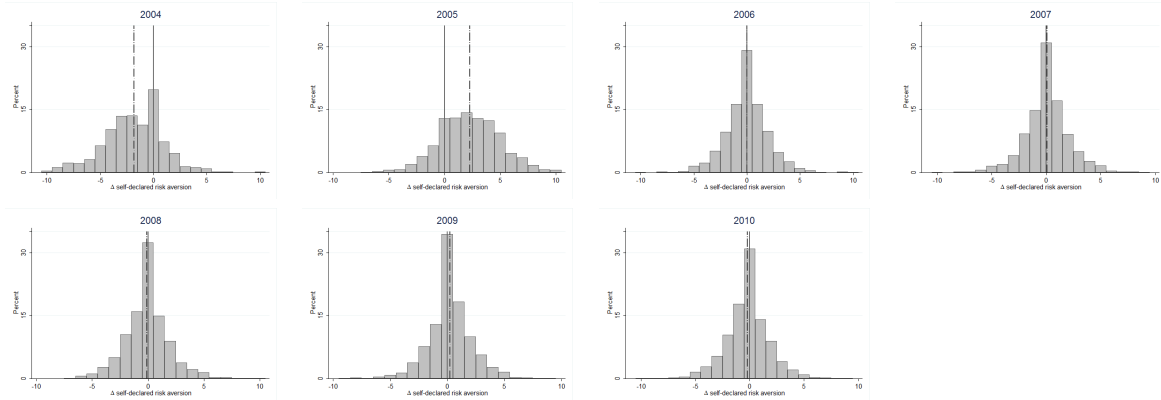
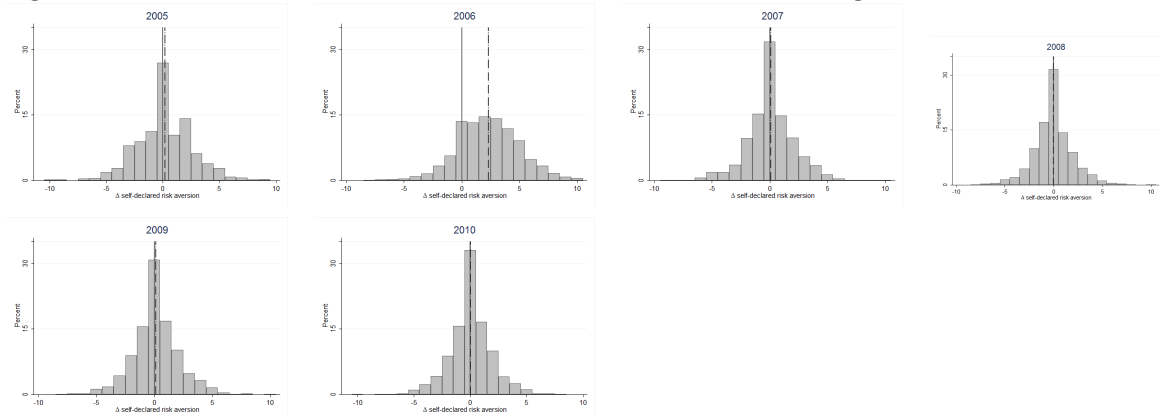


Figure 2: Variation of Declared Risk Aversion : Two Years Lag  $\Delta RA = RA_t - RA_{t-2}$



Figures 1, 2, 3 and 4 display yearly, two-year, three-year and five-year variations in individual self-declared risk aversion. The solid line displays the 0 value, which represents 'no change' in risk aversion compared to the previous year. The dashed line shows the median value of change.<sup>13</sup>

<sup>13</sup>If  $RA_t = 4$  and  $RA_{t-1} = 4$  then  $\Delta RA_t = 0$ . If  $RA_t = 5$  and  $RA_{t-1} = 4$  then  $\Delta RA_t = 1$ . Therefore, a positive number means that s/he is now more risk averse compared to last year's risk-aversion level.

Figure 3: Variation of Declared Risk Aversion : Three Years Lag  $\Delta RA = RA_t - RA_{t-3}$

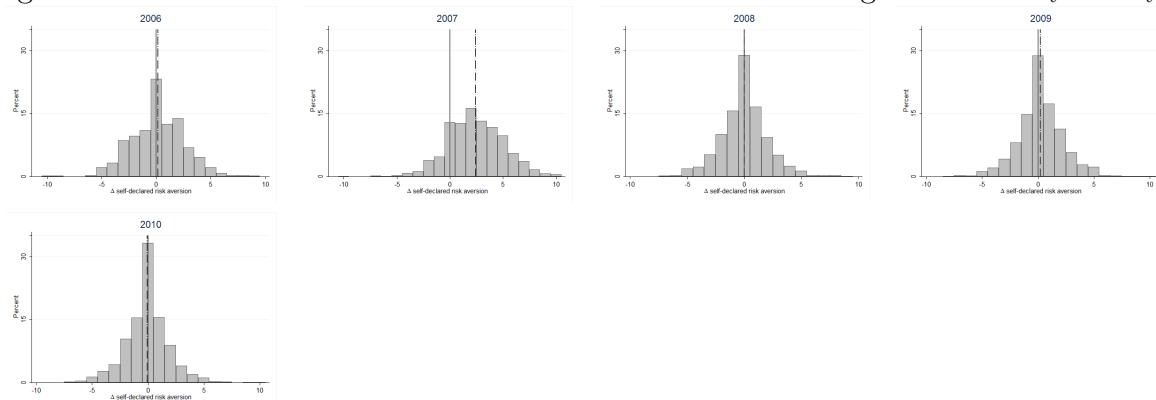
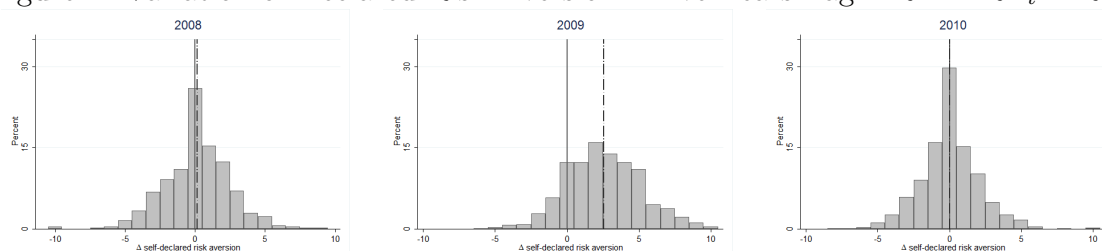


Figure 4: Variation of Declared Risk Aversion : Five Years Lag  $\Delta RA = RA_t - RA_{t-5}$



While no variation in risk aversion level is observed for most of the respondents, around 30% of interviewees report a higher or lower level of risk aversion. Almost all years present a clear bell-shaped distribution with a median of 0, but also many interviewees reporting different risk aversion levels across the years. Nonetheless, in the first two graphs of figure 1, which present the variation in individuals' risk preferences between 2003 and 2004 and between 2004 and 2005 respectively, the median risk aversion change is different from 0, and it is first left- and then right-shifted. So it seems that something unusual happened in 2004: people posted lower risk aversion on average in 2004.

Let us denote  $\Delta$  the difference in index between year  $t$  and year  $t - 1$ . As self-reported risk aversion has a 0-10 scale, the possible range of difference in risk aversion is from  $-10$  to  $10$ . The former value corresponds to an extreme risk-averse agent ( $SRRA = 10$ ) becoming an extreme risk lover ( $SRRA = 0$ ), while the latter value can be associated with an extreme risk-seeking individual who becomes extremely risk averse.  $\Delta^+$  is a dummy for becoming more risk averse: an individual declares a higher risk aversion score at year  $t$  compared to year  $t - 1$ .  $\Delta^-$  is a dummy for becoming less risk averse: an

individual declares a lower level of risk aversion at year  $t$  compared to year  $t - 1$ . These two dummies take value 1 only when the difference in the annual risk aversion index is greater than or equal to 2 in order to avoid respondent measurement error noise. Table 7 reports the share of individuals who declare a different level of risk aversion from one year to the next.<sup>14</sup> Leaving aside 2003-2004 and 2004-2005, we note that around 15% and 20% of respondents declare a higher level of risk aversion than the previous year, and a similar share of the sample declare a lower level of risk aversion than in the previous survey wave.

Table 7: Yearly Change in Individuals' Self-Reported Risk Aversion

%	03-04	04-05	05-06	06-07	07-08	08-09	09-10
<b>Share of individuals</b>							
with higher RA ( $\Delta^+$ )	8.74	60.29	19.13	19.31	16.75	20.37	16.33
with lower RA ( $\Delta^-$ )	52.83	7.40	19.13	17.77	20.04	14.00	20.89
<i>Observations</i>	<i>1,041</i>	<i>2,946</i>	<i>2,332</i>	<i>3,045</i>	<i>2,674</i>	<i>2,415</i>	<i>5,247</i>

*Note:* 2004 refers to the variation between 2003 and 2004.

These figures provide some initial evidence that individual risk aversion may vary over time, which is at odds with the risk stability assumption commonly used. To confirm that the observed instability is really capturing actual changes in individual characteristics and not just measurement error, we investigate the relation between the yearly changes in self-declared risk aversion and shocks (such as job loss, income changes and health optimism) faced by individuals in the previous year. Such shocks could actually explain the change in declared risk aversion from one year to the next.

### 4.3 Is the variation in risk aversion correlated with shocks?

Table 8 presents the pairwise correlation matrix for changes in risk aversion and shocks. We compare changes in self-reported risk aversion with various shocks. As previously,  $\Delta$  stands for the difference in the index between year  $t$  and  $t - 1$ . Job loss is a dummy

<sup>14</sup>We only look at the variations for participants who stay two years in a row. That is why the number of observations is less than the full sample size. In 2004, for example, we could only observe 1,041 participants who were in the 2003 wave even though the total 2004 sample size was 4,224.

variable created if the individual, his spouse, or both have lost their job between year  $t$  and  $t - 1$ . As health variables are collected as index variables<sup>15</sup>, we also created dummies for positive/negative changes. Personal job loss is not really significant to the SRRA, but spouse job loss is. When a spouse has lost his or her job (or both have lost their jobs), the individual declares a higher risk aversion level. When individuals are more anxious about their health, they also declare a higher risk aversion level. When it comes to income variation, we can observe a significant correlation between difference in income and change in SRRA. If the individual earns more income compared to the previous year, s/he becomes less risk averse, which is consistent with the wealth effect in the risk aversion literature. We then look at the sub-sample analyses between men and women. Men become more risk averse when they lose their own job, whereas women are more influenced by their spouses job loss. Moreover, women are more sensitive to an income change: if they become richer, they are less risk averse, while men are not influenced very much by an income change. In order to see the clearer correlation and even the underlying causation, we conduct the Mundlak random-effects model.

Table 8: Pairwise Correlation between Changes in Risk aversion and Shocks

SRRA in general	job loss			health		Income $\Delta$
	own	spouse	both	$\Delta^+$	$\Delta^-$	
$\Delta$	0.006	0.023**	0.019**	0.442***	0.000	-0.014*
$\Delta^m$	0.020***	0.016	0.032**	0.358***	0.037*	-0.002
$\Delta^f$	-0.005	0.024*	0.011	0.363**	-0.006	0.039*

Notes: \* 10%, \*\* 5% and \*\*\* 1% significance.

$\Delta^+$  refers to a positive change,  $\Delta^-$  refers to a negative change.

Positive change means that the individual becomes more risk averse.

$\Delta^m$  refers to changes for male respondents only,  $\Delta^f$  for female respondents only.

<sup>15</sup>A question regarding health status is asked: “Are you anxious about your health?”. Respondents answered on a scale of 1 (absolutely agree) to 5 (do not agree at all).

## 4.4 Does the time-variant dimension represent a large share of risk aversion?

We first estimate the regression on the yearly change in risk aversion with shocks. As seen above, the change in risk aversion is correlated with income, health, and employment shocks. In addition, we control for changes in debt, marital status, having a child, and education. For the analyses, we introduce regional and year dummies in consideration of the Japanese earthquakes.<sup>16</sup>

Table 9 presents the result of delta-delta regression. Column (1) shows the estimates for the pooled OLS, and Column (2) presents the random effect model, followed by Column (3) with the fixed effect model. The yearly change in log income is negatively correlated with the change in risk aversion; the richer the individual, the less risk averse s/he becomes. Being more anxious about health also raises the risk aversion level, while being less anxious about health is relatively less clear (but has the negative sign for the fixed effect model). Those in their early 20s might change their education level. The change in education level is negatively correlated with the change in risk aversion; the more educated an individual, the less risk averse s/he becomes. This result could suggest that higher education (tertiary education) may reduce the risk aversion level. The concern is that there are not enough yearly changes to capture the correlations between the changes in risk aversion and other shocks, as the sample size is small and the panel is relatively short. We therefore use another method, the ‘Mundlak model’, to capture the time-variant and time-invariant factors in the following section.

---

<sup>16</sup>In 2003-2010, there were three regional earthquakes causing more than ten casualties. The Chuetsu earthquake occurred on October 23, 2004, causing 40 casualties in the Tohoku, Hokuriku, and Kanto regions. On July 16, 2007, another Chuetsu offshore earthquake occurred with 11 casualties in the Hokuriku region. More recently, in the Touhoku region, the Iwate-Miyagi Nairiku earthquake (June 14, 2008) caused 12 casualties. We first control for those who were in the regions affected by these earthquakes at the time by introducing dummies one year after the earthquakes. However, as we control for the regions and year, the specific regions in the specific year do not give rise to any significant impact on the yearly change in individual risk aversion.



Table 9: Delta - Delta Regression on Yearly Changes

<i>Dependent Variable = <math>\Delta SRRA</math></i>			
	(1)	(2)	(3)
	<i>Pooled OLS</i>	<i>Random Effect</i>	<i>Fixed Effect</i>
$\Delta \text{Log}(\text{Income})$	-0.138 (0.09)	-0.138 (0.09)	-0.226 (0.13)
Age	0.003 (0.00)	0.003 (0.00)	0.001 (0.23)
$\Delta \text{Health}^+ (=1)$	0.134 (0.10)	0.134 (0.10)	0.180 (0.15)
$\Delta \text{Health}^- (=1)$	0.139 (0.10)	0.139 (0.10)	0.058 (0.15)
Job Loss Self (=1)	-0.147 (0.23)	-0.147 (0.23)	-0.320 (0.37)
Job Loss Spouse (=1)	-0.709** (0.24)	-0.709** (0.27)	-1.048* (0.43)
Job Loss Both (=1)	1.041* (0.46)	1.041* (0.51)	0.930 (0.82)
$\Delta \text{Debt}$	0.042 (0.13)	0.042 (0.12)	0.014 (0.18)
$\Delta \text{Marital Status}$	-0.146 (0.44)	-0.146 (0.54)	1.404 (1.26)
$\Delta \text{Number of Children}$	-0.054 (0.11)	-0.054 (0.11)	-0.031 (0.14)
$\Delta \text{Education}$	-0.137 (0.12)	-0.137 (0.11)	-0.282 (0.15)
Female (=1)	0.165* (0.07)	0.165* (0.08)	
Constant	-0.453 (0.28)	-0.070 (0.32)	-2.300 (11.51)
Year Dummy	Yes	Yes	Yes
Region Dummy	Yes	Yes	Yes
City Dummy	Yes	Yes	Yes
Observations	2642	2642	2642
R2 within		0.202	0.207
R2 overall		0.207	0.183
R2 between		0.207	0.156
R2	0.207		0.207

*Notes:* \* 10%, \*\* 5% and \*\*\* 1% significance.

Standard errors are clustered at the individual level.

**Correlated Random Effects (Mundlak, 1978)** We build a statistical model in keeping with Sahm (2008), which formulates the risk aversion function  $RA_{it} = x_{it}\beta + a_i$  to disentangle the time-variant factors  $x_{it}$  and the time-invariant factors  $a_i$ . We can model the relationship between time-invariant factor  $a_i$  and the observable panel average

$\bar{x}_i$  as  $a_i = \bar{x}_i\lambda + u_i$ . We assume  $u_i|\bar{x}_i \sim N(0, \sigma_u^2)$ . This approach takes up the correlated random-effects model by [Mundlak \(1978\)](#). Also, given that our self-reported risk aversion measure is on a scale of 0 to 10, we can assign a latent variable such that:

$$RA_{it} = x_{it}\beta + \bar{x}_i\lambda + u_i + \epsilon_{it}$$

$$SRRRA_{it} = j, \text{ if } \underline{RA}_j < RA_{it} < \overline{RA}_j \text{ (} i = 1, \dots, N; t = 1, \dots, T \text{)}$$

$SRRRA_{it}$  is the self-reported category reported by an interviewee. By rearranging the above equation, we can exhibit the within- and between-individual variations in the risk aversion function.

$$RA_{it} = (x_{it} - \bar{x}_i)\beta + \bar{x}_i(\lambda + \beta) + u_i + \epsilon_{it} \quad (1)$$

$RA_{it}$ : Self-Reported Risk Aversion Category at time  $t$  of individual  $i$

$x_{it} - \bar{x}_i$ : Income variation, Age variation, Health shock, Employment variation, Debt Variation, Marital change, Change in the number of children, Employment status change, and Education variation

$\bar{x}_i$ : Panel average of Log income, Age, Health, Employment, Debt, Marital status, Number of children, and Number of years of schooling

We test the impact of the panel average of time-variant variables for the same individual in order to track the between-subject effect and the impact of the current variation (difference between the current variable and the panel average) to check the within-individual effect on the risk aversion parameter. To be more precise, the first term  $(x_{it} - \bar{x}_i)\beta$  captures a change in the risk aversion parameter for a given individual (within-individual variation) and the second term  $\bar{x}_i(\lambda + \beta)$  gives the between-individual variation. We use the random-effects regression to estimate the parameters.

Table 10 presents the result of the within-between analyses. The result across individuals (between-individual variation) shows that women declare higher self-reported

risk aversion, as expected. Also, being employed is negatively correlated with the risk aversion measure.<sup>17</sup>

Table 10: Risk Aversion with Within and Between Variations : Mundlak Model

<i>Dependent Variable = Log(SRRA)</i>					
	(1)	(2)		(1)	(2)
	<i>Pooled OLS</i>	<i>Random Effect</i>		<i>Pooled OLS</i>	<i>Random Effect</i>
<i>Within Variation</i>			<i>Between Variation</i>		
Variation Log(Income)	-0.043*** (0.01)	-0.037*** (0.01)	Mean Log(Income)	-0.011 (0.04)	-0.026 (0.04)
Variation Age	-0.006 (0.00)	-0.006 (0.00)	Mean Age	0.003*** (0.00)	0.003*** (0.00)
Variation Health Status	0.006 (0.01)	0.006 (0.01)	Mean Health Status	0.036*** (0.01)	0.030*** (0.01)
Variation Employment Status Self (=1)	-0.017 (0.02)	-0.007 (0.02)	Mean Employment Self	-0.076*** (0.02)	-0.066** (0.02)
Variation Employment Status Spouse (=1)	-0.016 (0.02)	-0.011 (0.02)	Mean Employment Spouse	0.095*** (0.02)	0.081*** (0.02)
Variation Debt	0.002 (0.02)	-0.002 (0.02)	Mean Debt	-0.009 (0.01)	-0.006 (0.01)
Variation Marital Status	0.009 (0.07)	0.011 (0.06)	Mean Marital Status	-0.066* (0.03)	-0.060* (0.03)
Variation Number of Children	-0.008 (0.01)	-0.009 (0.01)	Mean Number of Children	-0.017** (0.01)	-0.013* (0.01)
Variation Education	-0.032 (0.02)	-0.023 (0.02)	Mean Education	-0.020** (0.01)	-0.019** (0.01)
Constant	1.157* (0.58)	1.950*** (0.56)	Female (=1)	0.039** (0.01)	0.049*** (0.01)
Year Dummy	Yes	Yes			
Region Dummy	Yes	Yes			
City Dummy	Yes	Yes			
Observations	8400	8400			
R2 within		0.278			
R2 overall		0.214			
R2 between		0.175			
R2	0.215				

Notes: \* 10%, \*\* 5% and \*\*\* 1% significance.

Standard errors are clustered at the individual level.

Mean Variable is the panel average for one individual.

Variable *Variation* is the difference between current value and panel average.

Column (1) presents the pooled OLS on log of self-reported risk aversion and Column (2) presents the random effect model on log of self-reported risk aversion.<sup>18</sup> The risk aversion measure shows that individuals become less risk averse when they get richer, as the log income variation is negatively correlated with the risk aversion measure with strong significance. On the other hand, age variation is positively correlated with risk aversion, meaning that when an individual gets older, s/he becomes more risk averse. If either the individual or the spouse loses his or her job, then s/he becomes more risk averse

<sup>17</sup>Employment status: being unemployed takes the value of 0, and being employed takes the value of 1.

<sup>18</sup>Using a logarithm means that we can obtain the percentage change in risk aversion associated with the different variables. An income change lowers risk aversion by 3.6% - 4.3% , whereas getting one year older increases risk aversion by 0.6%. Also, being a woman increases risk aversion by 3.9% - 4.9% and being anxious about health status significantly raises the risk aversion measure by 3.1% - 3.7%.

(negative correlation with a positive employment status change). Where the individual gets a higher education (tertiary education), s/he becomes less risk averse (negative correlation).<sup>19</sup> However, these latter relations are not statistically significant. Across individuals, women and older people are more risk averse, as expected.<sup>20</sup> Those who have concerns about their health status tend to declare a higher risk aversion level. Education is negatively correlated with risk aversion, and those who are indebted are less risk averse, and vice versa, i.e. risk-averse individuals do not like debt. Married individuals declare lower risk aversion.

**Robustness Checks** We observe a big shift in Risk Aversion between 2003 and 2004, raising a measurement error concern. We therefore conduct the robustness checks for our analyses without the years 2003 and 2004. Table 11 presents the result of a delta-delta regression excluding 2003 and 2004. It does not find a large difference compared to Table 9 except that now the change in income in the fixed effect model gives significant effect. Table 12 presents the Mundlak model excluding the years 2003-2004. The result shows that the income and education variations reduce the risk aversion level, with slight changes in the coefficients. Therefore, we can safely say that the income change is indeed negatively correlated with risk aversion in terms of within-individual variation. Across individuals, the richer, healthier and employed men are less risk averse.

---

<sup>19</sup>We have individuals aged 20-25 to be able to capture the changes in education. In Japan, individuals attend higher education in their early-to-mid 20s.

<sup>20</sup>We look solely at correlation, not causality in terms of the ‘between variation’ here.

Table 11: Delta - Delta Regression on Yearly Changes, 2005-2010

<i>Dependent Variable = <math>\Delta SRRA</math></i>			
	(1)	(2)	(3)
	<i>Pooled OLS</i>	<i>Random Effect</i>	<i>Fixed Effect</i>
$\Delta \text{Log}(\text{Income})$	-0.161 (0.10)	-0.161 (0.09)	-0.251* (0.13)
Age	0.001 (0.00)	0.001 (0.00)	0.003 (0.24)
$\Delta \text{Health}^+ (=1)$	0.157 (0.10)	0.157 (0.10)	0.233 (0.15)
$\Delta \text{Health}^- (=1)$	0.144 (0.10)	0.144 (0.10)	0.058 (0.15)
Job Loss Self (=1)	-0.141 (0.24)	-0.141 (0.23)	-0.336 (0.37)
Job Loss Spouse (=1)	-0.644** (0.25)	-0.644* (0.27)	-0.928* (0.44)
Job Loss Both (=1)	1.047* (0.46)	1.047* (0.51)	1.005 (0.82)
$\Delta \text{Debt}$	0.040 (0.14)	0.040 (0.12)	0.100 (0.18)
$\Delta \text{Marital Status}$	0.039 (0.40)	0.039 (0.55)	1.311 (1.22)
$\Delta \text{Child}$	-0.125 (0.11)	-0.125 (0.11)	-0.096 (0.14)
$\Delta \text{Education}$	-0.122 (0.13)	-0.122 (0.11)	-0.266 (0.15)
Female (=1)	0.213** (0.07)	0.213* (0.08)	
Constant	1.978*** (0.31)	-0.119 (0.32)	-0.527 (12.82)
Year Dummy	Yes	Yes	Yes
Region Dummy	Yes	Yes	Yes
City Dummy	Yes	Yes	Yes
Observations	2515	2515	2515
R2 within		0.181	0.187
R2 overall		0.176	0.146
R2 between		0.162	0.110
R2	0.176		0.187

*Notes:* \* 10%, \*\* 5% and \*\*\* 1% significance.

Standard errors are clustered at the individual level.

Table 12: Risk Aversion with Within and Between Variations : Mundlak Model, 2005-2010

<i>Dependent Variable = Log(SRRA)</i>					
	(1)	(2)		(1)	(2)
	<i>Pooled OLS</i>	<i>Random Effect</i>		<i>Pooled OLS</i>	<i>Random Effect</i>
<i>Within Variation</i>			<i>Between Variation</i>		
Log(Income)	-0.034*** (0.01)	-0.034*** (0.01)	Mean Log(Income)	-0.024 (0.04)	-0.059 (0.04)
Age	-0.010* (0.00)	-0.010* (0.00)	Mean Age	0.003*** (0.00)	0.003*** (0.00)
Health Status	0.003 (0.01)	0.001 (0.01)	Mean Health Status	0.025*** (0.01)	0.019** (0.01)
Employment Status Self (=1)	-0.008 (0.02)	0.003 (0.02)	Mean Employment Self	-0.085*** (0.02)	-0.069** (0.02)
Employment Status Spouse (=1)	-0.006 (0.02)	0.001 (0.02)	Mean Employment Spouse	0.104*** (0.03)	0.089*** (0.03)
Debt	0.003 (0.02)	0.006 (0.02)	Mean Debt	-0.028* (0.01)	-0.022 (0.01)
Marital Status	-0.026 (0.08)	-0.026 (0.07)	Mean Marital Status	-0.037 (0.03)	-0.024 (0.03)
Child	-0.014 (0.01)	-0.018 (0.01)	Mean Number of Children	-0.019** (0.01)	-0.014* (0.01)
Education	-0.043* (0.02)	-0.038* (0.02)	Mean Education	-0.013* (0.01)	-0.011 (0.01)
Constant	1.839** (0.62)	2.409*** (0.58)	Female (=1)	0.070*** (0.02)	0.073*** (0.01)
Year Dummy	Yes	Yes			
Region Dummy	Yes	Yes			
City Dummy	Yes	Yes			
Observations	7235	7235			
R2 within		0.007			
R2 overall		0.057			
R2 between		0.060			
R2	0.058				

Notes: \* 10%, \*\* 5% and \*\*\* 1% significance.

Standard errors are clustered at the individual level.

Mean Variable is the panel average for one individual.

Variable *Variation* is the difference between current value and panel average.

## 4.5 How often should risk attitudes be collected in surveys?

Table 13 and Table 14 present the coefficients of self-reported risk aversion when predicting current risky behaviors without and with socio-demographic controls, respectively. Current risky behaviors are smoking, drinking, gambling, investment in risky assets, indebtedness, employment status, self-employment, and public sector choice. Risk aversion is negatively correlated with all the given behaviors: risk-averse individuals smoke less, drink less, gamble less, invest less in risky assets, have less debt, and fewer of them are self-employed. Using the past lagged risk aversion measures turns up fairly similar results when predicting current behaviors compared to the current risk aversion measure.

Table 13: Analyses with Past Risk-Aversion Variables on Current Behaviors

Probit estimations without controls							Self	Public
	Smoke	Drink	Gamble	Risky asset	Debt	Employed	employed	sector
<b>RA<sub>t</sub></b>	-0.080***	-0.065***	-0.071***	-0.043***	-0.032***	-0.079***	0.003	0.016
Clustered SE	(0.006)	(0.007)	(0.006)	(0.008)	(0.006)	(0.006)	(0.008)	(0.011)
Pseudo R <sup>2</sup>	0.012	0.008	0.009	0.003	0.002	0.011	0.000	0.001
<i>observations</i>	23,847	23,847	23,847	8,597	23,047	22,975	14,210	11,033
<b>RA<sub>t-1</sub></b>	-0.081***	-0.062***	-0.065***	-0.032***	-0.033***	-0.076***	0.001	0.011
Clustered SE	(0.007)	(0.008)	(0.007)	(0.009)	(0.007)	(0.007)	(0.010)	(0.013)
Pseudo R <sup>2</sup>	0.012	0.007	0.008	0.002	0.002	0.011	0.000	0.000
<i>observations</i>	15,870	15,870	15,870	6,274	15,394	15,271	9,421	7,250
<b>RA<sub>t-2</sub></b>	-0.086***	-0.061***	-0.067***	-0.016	-0.037***	-0.076***	0.012	0.006
Clustered SE	(0.009)	(0.010)	(0.009)	(0.013)	(0.009)	(0.009)	(0.013)	(0.017)
Pseudo R <sup>2</sup>	0.013	0.007	0.008	0.000	0.002	0.010	0.000	0.000
<i>observations</i>	9,476	9,476	9,476	3,215	9,183	9,075	5,558	4,246
<b>RA<sub>t-3</sub></b>	-0.078***	-0.053***	-0.062***	-0.018	-0.034***	-0.075***	0.012	0.001
Clustered SE	(0.010)	(0.011)	(0.010)	(0.016)	(0.010)	(0.010)	(0.014)	(0.018)
Pseudo R <sup>2</sup>	0.011	0.006	0.007	0.001	0.002	0.011	0.000	0.000
<i>observations</i>	6,560	6,560	6,560	1,733	6,350	6,235	3,930	3,015
<b>RA<sub>t-4</sub></b>	-0.085***	-0.062***	-0.057***	-0.011	-0.029*	-0.056***	-0.000	0.012
Clustered SE	(0.011)	(0.013)	(0.011)	(0.015)	(0.011)	(0.012)	(0.016)	(0.020)
Pseudo R <sup>2</sup>	0.013	0.008	0.006	0.000	0.002	0.006	0.000	0.000
<i>observations</i>	3,962	3,962	3,962	1,738	3,840	3,732	2,418	1,874
<b>RA<sub>t-5</sub></b>	-0.072***	-0.067***	-0.052**	-0.016	-0.019	-0.031	-0.026	-0.001
Clustered SE	(0.016)	(0.018)	(0.017)	(0.018)	(0.016)	(0.017)	(0.024)	(0.030)
Pseudo R <sup>2</sup>	0.009	0.009	0.005	0.000	0.001	0.002	0.001	0.000
<i>observations</i>	1,576	1,576	1,576	1,198	1,536	1,494	930	722

Notes: \* 10%, \*\* 5% and \*\*\* 1% significance.

Similarly, Tables 15 and 16 present the coefficients of the different average measures of

Table 14: Analyses with Past Risk-Aversion Variables on Current Behaviors

Probit estimations with controls							Self	Public
	Smoke	Drink	Gamble	Risky asset	Debt	Employed	employed	sector
<b>RA<sub>t</sub></b>	-0.034***	-0.041***	-0.055***	-0.041***	-0.017*	-0.042***	-0.009	0.017
Clustered SE	(0.007)	(0.008)	(0.007)	(0.009)	(0.007)	(0.007)	(0.010)	(0.013)
Pseudo R <sup>2</sup>	0.195	0.082	0.046	0.068	0.092	0.177	0.075	0.047
<i>observations</i>	17,436	17,436	17,436	6,622	17,139	16,829	10,170	7,688
<b>RA<sub>t-1</sub></b>	-0.031***	-0.038***	-0.044***	-0.036***	-0.016	-0.033***	-0.016	0.015
Clustered SE	(0.009)	(0.009)	(0.008)	(0.010)	(0.008)	(0.009)	(0.012)	(0.016)
Pseudo R <sup>2</sup>	0.217	0.082	0.047	0.068	0.101	0.172	0.076	0.044
<i>observations</i>	11,862	11,862	11,862	4,885	11,682	11,436	6,872	5,147
<b>RA<sub>t-2</sub></b>	-0.030**	-0.037**	-0.053***	-0.010	-0.022*	-0.037***	-0.007	0.010
Clustered SE	(0.012)	(0.012)	(0.010)	(0.015)	(0.011)	(0.011)	(0.015)	(0.020)
Pseudo R <sup>2</sup>	0.257	0.079	0.047	0.065	0.107	0.164	0.070	0.044
<i>observations</i>	7,192	7,192	7,192	2,576	7,075	6,906	4,126	3,068
<b>RA<sub>t-3</sub></b>	-0.024	-0.032*	-0.046***	-0.021	-0.021	-0.036**	-0.013	0.007
Clustered SE	(0.013)	(0.013)	(0.011)	(0.018)	(0.012)	(0.012)	(0.017)	(0.022)
Pseudo R <sup>2</sup>	0.260	0.081	0.050	0.063	0.115	0.155	0.066	0.048
<i>observations</i>	5,019	5,019	5,019	1,393	4,930	4,775	2,949	2,213
<b>RA<sub>t-4</sub></b>	-0.037**	-0.040**	-0.043**	-0.003	-0.015	-0.019	-0.023	0.022
Clustered SE	(0.014)	(0.015)	(0.013)	(0.018)	(0.014)	(0.015)	(0.019)	(0.024)
Pseudo R <sup>2</sup>	0.269	0.084	0.063	0.062	0.117	0.170	0.064	0.053
<i>observations</i>	3,050	3,050	3,050	1,397	2,995	2,871	1,845	1,402
<b>RA<sub>t-5</sub></b>	-0.048*	-0.055**	-0.026	-0.006	-0.026	-0.026	-0.066*	-0.014
Clustered SE	(0.020)	(0.021)	(0.020)	(0.021)	(0.019)	(0.021)	(0.028)	(0.034)
Pseudo R <sup>2</sup>	0.261	0.101	0.103	0.062	0.114	0.167	0.081	0.064
<i>observations</i>	1,237	1,237	1,237	978	1,217	1,172	730	555

Notes: \* 10%, \*\* 5% and \*\*\* 1% significance.

Control variables are gender, age, education, mother's education, marital status and number of children.

risk aversion when predicting current risky behaviors.<sup>21</sup> The first two rows of each table present the total average risk aversion measures: the first is panel average risk aversion over time including the current risk aversion measure, while the second excludes current risk aversion. From the third row, we calculate the average of current risk aversion at  $t$  and the past risk aversion measure at  $t - i$  where  $i = 1, 2, 3, 4, 5, 6$ .

Tables 17 - Table 22 show the results for the sample of individuals who appear four, five and six consecutive years. A comparison of the pseudo  $R^2$  and coefficient size shows that a four-year average provides a better prediction than the other two-year averages of risk aversion. This suggests that having more information on the time-variant dimensions of the risk aversion measure can increase explanatory power and decrease measurement noise. In addition, current behavior is more related to the recent risk aversion measures,

<sup>21</sup>We dropped years 2003 and 2004 in this section due to the abovementioned measurement concerns



Table 15: Analyses with Average Risk-Aversion Variables on Current Behaviors

Probit estimations without controls	Smoke	Drink	Gamble	Risky asset	Debt	Employed	Self employed	Public sector
$\mathbf{RA}_{\frac{\sum_{i=0}^n RA_{t-i}}{(t+1)}}$	-0.099***	-0.082***	-0.086***	-0.047***	-0.039***	-0.095***	0.005	0.026
Clustered SE	(0.008)	(0.008)	(0.007)	(0.009)	(0.007)	(0.007)	(0.011)	(0.014)
Pseudo R <sup>2</sup>	0.015	0.011	0.011	0.003	0.002	0.013	0.000	0.001
<i>observations</i>	23,847	23,847	23,847	8,597	23,047	22,975	14,210	11,033
$\mathbf{RA}_{\frac{\sum_{i=1}^n RA_{t-i}}{(t+1)}}$	-0.056***	-0.038***	-0.034***	-0.029***	-0.008	-0.043***	-0.002	0.011
Clustered SE	(0.004)	(0.004)	(0.004)	(0.005)	(0.004)	(0.004)	(0.006)	(0.007)
Pseudo R <sup>2</sup>	0.016	0.008	0.006	0.005	0.000	0.010	0.000	0.001
<i>observations</i>	15,712	15,712	15,712	6,247	15,263	15,126	9,343	7,201
$\mathbf{RA}_{\frac{t-1}{2}}$	-0.111***	-0.084***	-0.093***	-0.052***	-0.045***	-0.106***	0.001	0.010
Clustered SE	(0.009)	(0.010)	(0.009)	(0.010)	(0.009)	(0.009)	(0.013)	(0.017)
Pseudo R <sup>2</sup>	0.016	0.010	0.012	0.004	0.003	0.015	0.000	0.000
<i>observations</i>	15,712	15,712	15,712	6,247	15,263	15,126	9,343	7,201
$\mathbf{RA}_{\frac{t-2}{2}}$	-0.121***	-0.076***	-0.091***	-0.032*	-0.049***	-0.109***	0.014	0.001
Clustered SE	(0.012)	(0.013)	(0.011)	(0.015)	(0.012)	(0.012)	(0.017)	(0.022)
Pseudo R <sup>2</sup>	0.019	0.008	0.011	0.001	0.003	0.015	0.000	0.000
<i>observations</i>	9,367	9,367	9,367	3,198	9,093	8,974	5,500	4,209
$\mathbf{RA}_{\frac{t-3}{2}}$	-0.113***	-0.073***	-0.079***	-0.028	-0.047***	-0.107***	0.015	-0.007
Clustered SE	(0.013)	(0.014)	(0.012)	(0.018)	(0.013)	(0.013)	(0.018)	(0.023)
Pseudo R <sup>2</sup>	0.016	0.007	0.008	0.001	0.003	0.015	0.000	0.000
<i>observations</i>	6,478	6,478	6,478	1,725	6,282	6,158	3,884	2,985
$\mathbf{RA}_{\frac{t-4}{2}}$	-0.123***	-0.079***	-0.075***	-0.021	-0.040**	-0.091***	-0.001	0.001
Clustered SE	(0.015)	(0.016)	(0.014)	(0.018)	(0.015)	(0.015)	(0.020)	(0.026)
Pseudo R <sup>2</sup>	0.019	0.008	0.007	0.001	0.002	0.010	0.000	0.000
<i>observations</i>	3,912	3,912	3,912	1,730	3,799	3,686	2,390	1,854
$\mathbf{RA}_{\frac{t-5}{2}}$	-0.105***	-0.091***	-0.075***	-0.038	-0.039*	-0.066**	-0.012	-0.018
Clustered SE	(0.020)	(0.022)	(0.020)	(0.022)	(0.020)	(0.020)	(0.028)	(0.036)
Pseudo R <sup>2</sup>	0.014	0.011	0.007	0.002	0.002	0.005	0.000	0.000
<i>observations</i>	1,556	1,556	1,556	1,193	1,518	1,476	919	714

Notes: \* 10%, \*\* 5% and \*\*\* 1% significance.

since risk aversion measured two years previously can still predict current behavior well. For this reason, collecting risk aversion every two years would definitely raise the quality of the use of the risk aversion measure in surveys. Alternatively, collecting the risk aversion measure at least every two years provides for a valid analysis, as past risk aversion at  $t - 2$  predicts current behavior well.

Table 16: Analyses with Average Risk-Aversion Variables on Current Behaviors

Probit estimations with controls							Self	Public
	Smoke	Drink	Gamble	Risky asset	Debt	Employed	employed	sector
<b>RA</b> $\frac{\sum_{i=0}^n RA_{t-i}}{(t+1)}$	-0.041***	-0.052***	-0.065***	-0.046***	-0.017	-0.045***	-0.013	0.031
Clustered SE	(0.009)	(0.010)	(0.009)	(0.011)	(0.009)	(0.009)	(0.013)	(0.016)
Pseudo R <sup>2</sup>	0.195	0.083	0.046	0.068	0.092	0.177	0.075	0.047
<i>observations</i>	17,436	17,436	17,436	6,622	17,139	16,829	10,170	7,688
<b>RA</b> $\frac{\sum_{i=1}^n RA_{t-i}}{(t+1)}$	-0.036***	-0.029***	-0.024***	-0.025***	-0.007	-0.031***	-0.002	0.014
Clustered SE	(0.005)	(0.005)	(0.005)	(0.006)	(0.005)	(0.005)	(0.007)	(0.009)
Pseudo R <sup>2</sup>	0.220	0.083	0.046	0.069	0.101	0.175	0.075	0.046
<i>observations</i>	11,776	11,776	11,776	4,867	11,603	11,356	6,825	5,120
<b>RA</b> $\frac{t-t-1}{2}$	-0.044***	-0.056***	-0.069***	-0.055***	-0.025*	-0.053***	-0.019	0.012
Clustered SE	(0.011)	(0.012)	(0.011)	(0.012)	(0.011)	(0.011)	(0.015)	(0.020)
Pseudo R <sup>2</sup>	0.217	0.082	0.049	0.070	0.101	0.173	0.076	0.045
<i>observations</i>	11,776	11,776	11,776	4,867	11,603	11,356	6,825	5,120
<b>RA</b> $\frac{t-t-2}{2}$	-0.050***	-0.047**	-0.074***	-0.027	-0.030*	-0.059***	-0.008	0.003
Clustered SE	(0.015)	(0.016)	(0.013)	(0.018)	(0.014)	(0.014)	(0.019)	(0.026)
Pseudo R <sup>2</sup>	0.257	0.078	0.049	0.066	0.108	0.166	0.070	0.043
<i>observations</i>	7,131	7,131	7,131	2,566	7,022	6,849	4,093	3,049
<b>RA</b> $\frac{t,t-3}{2}$	-0.043**	-0.046**	-0.059***	-0.033	-0.033*	-0.061***	-0.013	-0.006
Clustered SE	(0.016)	(0.017)	(0.014)	(0.022)	(0.016)	(0.016)	(0.021)	(0.028)
Pseudo R <sup>2</sup>	0.261	0.081	0.050	0.064	0.116	0.157	0.065	0.048
<i>observations</i>	4,972	4,972	4,972	1,390	4,891	4,731	2,922	2,199
<b>RA</b> $\frac{t,t-4}{2}$	-0.054**	-0.049**	-0.051**	-0.017	-0.025	-0.048**	-0.029	0.008
Clustered SE	(0.018)	(0.019)	(0.017)	(0.022)	(0.018)	(0.018)	(0.024)	(0.031)
Pseudo R <sup>2</sup>	0.269	0.083	0.063	0.063	0.117	0.170	0.061	0.052
<i>observations</i>	3,021	3,021	3,021	1,394	2,974	2,845	1,829	1,392
<b>RA</b> $\frac{t,t-5}{2}$	-0.050*	-0.063*	-0.033	-0.028	-0.036	-0.048	-0.041	-0.045
Clustered SE	(0.025)	(0.026)	(0.024)	(0.026)	(0.024)	(0.025)	(0.033)	(0.040)
Pseudo R <sup>2</sup>	0.258	0.102	0.102	0.063	0.115	0.169	0.074	0.066
<i>observations</i>	1,228	1,228	1,228	977	1,209	1,164	725	551

Notes: \* 10%, \*\* 5% and \*\*\* 1% significance.

Control variables are gender, age, education, mother's education, marital status and number of children.

Table 17: Analyses with Average Risk-Aversion Variables on Current Behaviors - Restricted Sample - 4 years

Probit estimations without controls							Self	Public
	Smoke	Drink	Gamble	Risky asset	Debt	Employed	employed	sector
<b>RA<sub>t</sub></b>	-0.086***	-0.052***	-0.055***	-0.024	-0.036**	-0.083***	0.007	-0.010
Clustered SE	(0.011)	(0.012)	(0.011)	(0.017)	(0.011)	(0.011)	(0.015)	(0.020)
Pseudo R <sup>2</sup>	0.012	0.005	0.005	0.001	0.002	0.011	0.000	0.000
<i>observations</i>	<i>6,384</i>	<i>6,384</i>	<i>6,384</i>	<i>1,706</i>	<i>6,194</i>	<i>6,072</i>	<i>3,832</i>	<i>2,950</i>
<b>RA<sub>t-1</sub></b>	-0.089***	-0.051***	-0.063***	-0.017	-0.035**	-0.080***	0.001	0.001
Clustered SE	(0.011)	(0.012)	(0.010)	(0.016)	(0.011)	(0.011)	(0.015)	(0.020)
Pseudo R <sup>2</sup>	0.013	0.005	0.007	0.000	0.002	0.011	0.000	0.000
<i>observations</i>	<i>6,384</i>	<i>6,384</i>	<i>6,384</i>	<i>1,706</i>	<i>6,194</i>	<i>6,072</i>	<i>3,832</i>	<i>2,950</i>
<b>RA<sub>t-2</sub></b>	-0.087***	-0.071***	-0.074***	-0.014	-0.038***	-0.075***	0.011	0.009
Clustered SE	(0.011)	(0.012)	(0.010)	(0.017)	(0.011)	(0.011)	(0.015)	(0.020)
Pseudo R <sup>2</sup>	0.013	0.009	0.010	0.000	0.003	0.010	0.000	0.000
<i>observations</i>	<i>6,384</i>	<i>6,384</i>	<i>6,384</i>	<i>1,706</i>	<i>6,194</i>	<i>6,072</i>	<i>3,832</i>	<i>2,950</i>
<b>RA<sub>t-3</sub></b>	-0.080***	-0.052***	-0.063***	-0.016	-0.033**	-0.074***	0.015	0.003
Clustered SE	(0.010)	(0.011)	(0.010)	(0.016)	(0.010)	(0.010)	(0.014)	(0.019)
Pseudo R <sup>2</sup>	0.012	0.005	0.008	0.000	0.002	0.010	0.000	0.000
<i>observations</i>	<i>6,384</i>	<i>6,384</i>	<i>6,384</i>	<i>1,706</i>	<i>6,194</i>	<i>6,072</i>	<i>3,832</i>	<i>2,950</i>
<b>RA<sub><math>\frac{t-1}{2}</math></sub></b>	-0.116***	-0.068***	-0.079***	-0.026	-0.047***	-0.108***	0.006	-0.006
Clustered SE	(0.014)	(0.015)	(0.013)	(0.019)	(0.014)	(0.014)	(0.019)	(0.025)
Pseudo R <sup>2</sup>	0.016	0.006	0.008	0.001	0.003	0.014	0.000	0.000
<i>observations</i>	<i>6,384</i>	<i>6,384</i>	<i>6,384</i>	<i>1,706</i>	<i>6,194</i>	<i>6,072</i>	<i>3,832</i>	<i>2,950</i>
<b>RA<sub><math>\frac{t-2}{2}</math></sub></b>	-0.117***	-0.083***	-0.087***	-0.025	-0.050***	-0.107***	0.012	-0.001
Clustered SE	(0.014)	(0.015)	(0.013)	(0.019)	(0.013)	(0.013)	(0.019)	(0.025)
Pseudo R <sup>2</sup>	0.017	0.009	0.010	0.001	0.003	0.014	0.000	0.000
<i>observations</i>	<i>6,384</i>	<i>6,384</i>	<i>6,384</i>	<i>1,706</i>	<i>6,194</i>	<i>6,072</i>	<i>3,832</i>	<i>2,950</i>
<b>RA<sub><math>\frac{t-3}{2}</math></sub></b>	-0.114***	-0.071***	-0.081***	-0.026	-0.047***	-0.107***	0.016	-0.004
Clustered SE	(0.013)	(0.014)	(0.013)	(0.018)	(0.013)	(0.013)	(0.018)	(0.024)
Pseudo R <sup>2</sup>	0.016	0.007	0.008	0.001	0.003	0.014	0.000	0.000
<i>observations</i>	<i>6,384</i>	<i>6,384</i>	<i>6,384</i>	<i>1,706</i>	<i>6,194</i>	<i>6,072</i>	<i>3,832</i>	<i>2,950</i>
<b>RA<sub><math>\frac{t-1,t-2,t-3}{4}</math></sub></b>	-0.145***	-0.096***	-0.107***	-0.027	-0.056***	-0.126***	0.012	0.006
Clustered SE	(0.017)	(0.018)	(0.015)	(0.021)	(0.016)	(0.016)	(0.022)	(0.029)
Pseudo R <sup>2</sup>	0.021	0.010	0.012	0.001	0.003	0.016	0.000	0.000
<i>observations</i>	<i>6,384</i>	<i>6,384</i>	<i>6,384</i>	<i>1,706</i>	<i>6,194</i>	<i>6,072</i>	<i>3,832</i>	<i>2,950</i>

Notes: \* 10%, \*\* 5% and \*\*\* 1% significance.

Table 18: Analyses with Average Risk-Aversion Variables on Current Behaviors - Restricted Sample - 4 years

Probit estimations with controls								Self	Public
	Smoke	Drink	Gamble	Risky asset	Debt	Employed	employed	sector	
<b>RA<sub>t</sub></b>	-0.038**	-0.037*	-0.041***	-0.028	-0.029*	-0.056***	-0.009	-0.015	
Clustered SE	(0.014)	(0.014)	(0.012)	(0.020)	(0.013)	(0.013)	(0.017)	(0.023)	
Pseudo R <sup>2</sup>	0.260	0.081	0.050	0.065	0.117	0.156	0.066	0.049	
<i>observations</i>	<i>4,902</i>	<i>4,902</i>	<i>4,902</i>	<i>1,376</i>	<i>4,823</i>	<i>4,665</i>	<i>2,883</i>	<i>2,172</i>	
<b>RA<sub>t-1</sub></b>	-0.041**	-0.021	-0.049***	-0.022	-0.026*	-0.044***	-0.020	0.006	
Clustered SE	(0.013)	(0.014)	(0.012)	(0.019)	(0.013)	(0.013)	(0.018)	(0.025)	
Pseudo R <sup>2</sup>	0.260	0.080	0.051	0.065	0.117	0.155	0.067	0.049	
<i>observations</i>	<i>4,902</i>	<i>4,902</i>	<i>4,902</i>	<i>1,376</i>	<i>4,823</i>	<i>4,665</i>	<i>2,883</i>	<i>2,172</i>	
<b>RA<sub>t-2</sub></b>	-0.029*	-0.045***	-0.060***	-0.016	-0.024	-0.042**	-0.008	0.015	
Clustered SE	(0.013)	(0.014)	(0.012)	(0.019)	(0.013)	(0.013)	(0.017)	(0.025)	
Pseudo R <sup>2</sup>	0.259	0.082	0.053	0.064	0.116	0.155	0.066	0.049	
<i>observations</i>	<i>4,902</i>	<i>4,902</i>	<i>4,902</i>	<i>1,376</i>	<i>4,823</i>	<i>4,665</i>	<i>2,883</i>	<i>2,172</i>	
<b>RA<sub>t-3</sub></b>	-0.029*	-0.031*	-0.048***	-0.022	-0.020	-0.036**	-0.009	0.010	
Clustered SE	(0.013)	(0.013)	(0.011)	(0.018)	(0.012)	(0.012)	(0.017)	(0.022)	
Pseudo R <sup>2</sup>	0.259	0.081	0.051	0.065	0.116	0.154	0.066	0.049	
<i>observations</i>	<i>4,902</i>	<i>4,902</i>	<i>4,902</i>	<i>1,376</i>	<i>4,823</i>	<i>4,665</i>	<i>2,883</i>	<i>2,172</i>	
<b>RA<sub><math>\frac{t-t-1}{2}</math></sub></b>	-0.053**	-0.038*	-0.060***	-0.032	-0.037*	-0.066***	-0.019	-0.005	
Clustered SE	(0.017)	(0.018)	(0.015)	(0.022)	(0.016)	(0.017)	(0.022)	(0.030)	
Pseudo R <sup>2</sup>	0.261	0.081	0.051	0.065	0.117	0.157	0.066	0.049	
<i>observations</i>	<i>4,902</i>	<i>4,902</i>	<i>4,902</i>	<i>1,376</i>	<i>4,823</i>	<i>4,665</i>	<i>2,883</i>	<i>2,172</i>	
<b>RA<sub><math>\frac{t-t-2}{2}</math></sub></b>	-0.045**	-0.056**	-0.069***	-0.030	-0.036*	-0.065***	-0.011	0.001	
Clustered SE	(0.017)	(0.018)	(0.015)	(0.022)	(0.016)	(0.016)	(0.022)	(0.029)	
Pseudo R <sup>2</sup>	0.260	0.082	0.052	0.065	0.117	0.156	0.066	0.049	
<i>observations</i>	<i>4,902</i>	<i>4,902</i>	<i>4,902</i>	<i>1,376</i>	<i>4,823</i>	<i>4,665</i>	<i>2,883</i>	<i>2,172</i>	
<b>RA<sub><math>\frac{t-t-3}{2}</math></sub></b>	-0.045**	-0.046**	-0.062***	-0.033	-0.033*	-0.062***	-0.012	-0.002	
Clustered SE	(0.016)	(0.017)	(0.015)	(0.022)	(0.016)	(0.016)	(0.021)	(0.028)	
Pseudo R <sup>2</sup>	0.260	0.081	0.052	0.065	0.117	0.156	0.066	0.049	
<i>observations</i>	<i>4,902</i>	<i>4,902</i>	<i>4,902</i>	<i>1,376</i>	<i>4,823</i>	<i>4,665</i>	<i>2,883</i>	<i>2,172</i>	
<b>RA<sub><math>\frac{t-t-1,t-2,t-3}{4}</math></sub></b>	-0.062**	-0.059**	-0.084***	-0.032	-0.038*	-0.070***	-0.023	0.014	
Clustered SE	(0.020)	(0.021)	(0.018)	(0.025)	(0.019)	(0.019)	(0.026)	(0.034)	
Pseudo R <sup>2</sup>	0.261	0.082	0.054	0.065	0.117	0.156	0.066	0.049	
<i>observations</i>	<i>4,902</i>	<i>4,902</i>	<i>4,902</i>	<i>1,376</i>	<i>4,823</i>	<i>4,665</i>	<i>2,883</i>	<i>2,172</i>	

Notes: \* 10%, \*\* 5% and \*\*\* 1% significance.

Control variables are gender, age, education, mother's education, marital status and number of children.

Table 19: Analyses with Average Risk-Aversion Variables on Current Behaviors - Restricted Sample - 5 years

Probit estimations without controls							Self	Public
	Smoke	Drink	Gamble	Risky asset	Debt	Employed	employed	sector
<b>RA<sub>t</sub></b>	-0.091***	-0.055***	-0.051***	-0.023	-0.033*	-0.077***	-0.002	-0.015
Clustered SE	(0.013)	(0.014)	(0.013)	(0.017)	(0.013)	(0.013)	(0.018)	(0.024)
Pseudo R <sup>2</sup>	0.013	0.005	0.004	0.001	0.002	0.009	0.000	0.000
<i>observations</i>	3,825	3,825	3,825	1,702	3,720	3,609	2,348	1,822
<b>RA<sub>t-1</sub></b>	-0.080***	-0.051***	-0.049***	-0.017	-0.038**	-0.075***	0.005	-0.001
Clustered SE	(0.013)	(0.014)	(0.012)	(0.016)	(0.013)	(0.013)	(0.018)	(0.025)
Pseudo R <sup>2</sup>	0.010	0.004	0.004	0.000	0.002	0.009	0.000	0.000
<i>observations</i>	3,825	3,825	3,825	1,702	3,720	3,609	2,348	1,822
<b>RA<sub>t-2</sub></b>	-0.098***	-0.070***	-0.080***	-0.014	-0.035**	-0.064***	0.010	0.013
Clustered SE	(0.013)	(0.013)	(0.012)	(0.017)	(0.013)	(0.013)	(0.018)	(0.023)
Pseudo R <sup>2</sup>	0.016	0.008	0.011	0.000	0.002	0.007	0.000	0.000
<i>observations</i>	3,825	3,825	3,825	1,702	3,720	3,609	2,348	1,822
<b>RA<sub>t-3</sub></b>	-0.084***	-0.062***	-0.072***	-0.016	-0.043***	-0.073***	0.017	-0.003
Clustered SE	(0.012)	(0.013)	(0.012)	(0.016)	(0.012)	(0.013)	(0.018)	(0.024)
Pseudo R <sup>2</sup>	0.013	0.007	0.010	0.000	0.003	0.010	0.001	0.000
<i>observations</i>	3,825	3,825	3,825	1,702	3,720	3,609	2,348	1,822
<b>RA<sub>t-4</sub></b>	-0.088***	-0.061***	-0.056***	-0.009	-0.027*	-0.054***	0.004	0.013
Clustered SE	(0.012)	(0.013)	(0.011)	(0.015)	(0.012)	(0.012)	(0.016)	(0.020)
Pseudo R <sup>2</sup>	0.014	0.007	0.006	0.000	0.001	0.006	0.000	0.000
<i>observations</i>	3,825	3,825	3,825	1,702	3,720	3,609	2,348	1,822
<b>RA<sub><math>\frac{t,t-1}{2}</math></sub></b>	-0.113***	-0.070***	-0.066***	-0.026	-0.046**	-0.100***	0.001	-0.011
Clustered SE	(0.016)	(0.017)	(0.015)	(0.019)	(0.016)	(0.016)	(0.022)	(0.029)
Pseudo R <sup>2</sup>	0.015	0.006	0.005	0.001	0.003	0.012	0.000	0.000
<i>observations</i>	3,825	3,825	3,825	1,702	3,720	3,609	2,348	1,822
<b>RA<sub><math>\frac{t,t-2}{2}</math></sub></b>	-0.127***	-0.084***	-0.088***	-0.024	-0.045**	-0.095***	0.005	-0.002
Clustered SE	(0.015)	(0.016)	(0.015)	(0.019)	(0.015)	(0.016)	(0.021)	(0.028)
Pseudo R <sup>2</sup>	0.019	0.009	0.010	0.001	0.003	0.011	0.000	0.000
<i>observations</i>	3,825	3,825	3,825	1,702	3,720	3,609	2,348	1,822
<b>RA<sub><math>\frac{t,t-3}{2}</math></sub></b>	-0.119***	-0.079***	-0.084***	-0.025	-0.051***	-0.101***	0.011	-0.012
Clustered SE	(0.015)	(0.016)	(0.015)	(0.019)	(0.015)	(0.015)	(0.021)	(0.029)
Pseudo R <sup>2</sup>	0.017	0.008	0.009	0.001	0.003	0.013	0.000	0.000
<i>observations</i>	3,825	3,825	3,825	1,702	3,720	3,609	2,348	1,822
<b>RA<sub><math>\frac{t,t-4}{2}</math></sub></b>	-0.124***	-0.080***	-0.074***	-0.021	-0.041**	-0.090***	0.001	0.000
Clustered SE	(0.015)	(0.016)	(0.014)	(0.018)	(0.015)	(0.015)	(0.021)	(0.026)
Pseudo R <sup>2</sup>	0.019	0.008	0.007	0.001	0.002	0.010	0.000	0.000
<i>observations</i>	3,825	3,825	3,825	1,702	3,720	3,609	2,348	1,822
<b>RA<sub><math>\frac{t,t-1,t-2,t-3,t-4}{5}</math></sub></b>	-0.153***	-0.105***	-0.106***	-0.027	-0.058**	-0.115***	0.008	0.005
Clustered SE	(0.018)	(0.019)	(0.017)	(0.021)	(0.018)	(0.018)	(0.025)	(0.033)
Pseudo R <sup>2</sup>	0.023	0.011	0.011	0.001	0.003	0.013	0.000	0.000
<i>observations</i>	3,825	3,825	3,825	1,702	3,720	3,609	2,348	1,822

Notes: \* 10%, \*\* 5% and \*\*\* 1% significance.

Table 20: Analyses with Average Risk-Aversion Variables on Current Behaviors - Restricted Sample - 5 years

Probit estimations with controls							Self	Public
	Smoke	Drink	Gamble	Risky asset	Debt	Employed	employed	sector
<b>RA<sub>t</sub></b>	-0.041*	-0.036*	-0.030*	-0.026	-0.026	-0.054***	-0.019	-0.016
Clustered SE	(0.016)	(0.017)	(0.015)	(0.020)	(0.015)	(0.016)	(0.021)	(0.027)
Pseudo R <sup>2</sup>	0.265	0.084	0.061	0.065	0.120	0.167	0.063	0.055
<i>observations</i>	<i>2,954</i>	<i>2,954</i>	<i>2,954</i>	<i>1,372</i>	<i>2,910</i>	<i>2,784</i>	<i>1,794</i>	<i>1,365</i>
<b>RA<sub>t-1</sub></b>	-0.029	-0.030	-0.031*	-0.022	-0.039**	-0.049**	-0.024	-0.007
Clustered SE	(0.016)	(0.016)	(0.014)	(0.019)	(0.015)	(0.016)	(0.021)	(0.029)
Pseudo R <sup>2</sup>	0.264	0.084	0.061	0.065	0.121	0.167	0.063	0.055
<i>observations</i>	<i>2,954</i>	<i>2,954</i>	<i>2,954</i>	<i>1,372</i>	<i>2,910</i>	<i>2,784</i>	<i>1,794</i>	<i>1,365</i>
<b>RA<sub>t-2</sub></b>	-0.041*	-0.035*	-0.065***	-0.017	-0.021	-0.031	-0.014	0.021
Clustered SE	(0.016)	(0.016)	(0.015)	(0.019)	(0.015)	(0.016)	(0.020)	(0.029)
Pseudo R <sup>2</sup>	0.265	0.084	0.066	0.064	0.120	0.165	0.062	0.055
<i>observations</i>	<i>2,954</i>	<i>2,954</i>	<i>2,954</i>	<i>1,372</i>	<i>2,910</i>	<i>2,784</i>	<i>1,794</i>	<i>1,365</i>
<b>RA<sub>t-3</sub></b>	-0.027	-0.041**	-0.050***	-0.023	-0.028	-0.037*	-0.013	0.001
Clustered SE	(0.015)	(0.016)	(0.014)	(0.018)	(0.015)	(0.016)	(0.021)	(0.030)
Pseudo R <sup>2</sup>	0.264	0.085	0.063	0.065	0.120	0.166	0.062	0.054
<i>observations</i>	<i>2,954</i>	<i>2,954</i>	<i>2,954</i>	<i>1,372</i>	<i>2,910</i>	<i>2,784</i>	<i>1,794</i>	<i>1,365</i>
<b>RA<sub>t-4</sub></b>	-0.044**	-0.041**	-0.045***	-0.003	-0.014	-0.022	-0.020	0.025
Clustered SE	(0.014)	(0.015)	(0.014)	(0.018)	(0.014)	(0.015)	(0.019)	(0.024)
Pseudo R <sup>2</sup>	0.266	0.085	0.063	0.064	0.119	0.164	0.063	0.056
<i>observations</i>	<i>2,954</i>	<i>2,954</i>	<i>2,954</i>	<i>1,372</i>	<i>2,910</i>	<i>2,784</i>	<i>1,794</i>	<i>1,365</i>
<b>RA<sub><math>\frac{t-1}{2}</math></sub></b>	-0.047*	-0.044*	-0.040*	-0.031	-0.043*	-0.068***	-0.029	-0.015
Clustered SE	(0.020)	(0.020)	(0.018)	(0.022)	(0.019)	(0.020)	(0.026)	(0.034)
Pseudo R <sup>2</sup>	0.265	0.084	0.061	0.065	0.121	0.168	0.063	0.055
<i>observations</i>	<i>2,954</i>	<i>2,954</i>	<i>2,954</i>	<i>1,372</i>	<i>2,910</i>	<i>2,784</i>	<i>1,794</i>	<i>1,365</i>
<b>RA<sub><math>\frac{t-2}{2}</math></sub></b>	-0.055**	-0.048*	-0.064***	-0.029	-0.032	-0.057**	-0.022	0.004
Clustered SE	(0.019)	(0.020)	(0.017)	(0.022)	(0.018)	(0.019)	(0.025)	(0.033)
Pseudo R <sup>2</sup>	0.266	0.085	0.064	0.065	0.120	0.167	0.063	0.055
<i>observations</i>	<i>2,954</i>	<i>2,954</i>	<i>2,954</i>	<i>1,372</i>	<i>2,910</i>	<i>2,784</i>	<i>1,794</i>	<i>1,365</i>
<b>RA<sub><math>\frac{t-3}{2}</math></sub></b>	-0.046*	-0.053**	-0.055**	-0.032	-0.037*	-0.061**	-0.022	-0.010
Clustered SE	(0.019)	(0.020)	(0.017)	(0.022)	(0.018)	(0.019)	(0.025)	(0.035)
Pseudo R <sup>2</sup>	0.265	0.085	0.063	0.065	0.121	0.167	0.063	0.055
<i>observations</i>	<i>2,954</i>	<i>2,954</i>	<i>2,954</i>	<i>1,372</i>	<i>2,910</i>	<i>2,784</i>	<i>1,794</i>	<i>1,365</i>
<b>RA<sub><math>\frac{t-4}{2}</math></sub></b>	-0.059**	-0.053**	-0.052**	-0.019	-0.026	-0.051**	-0.027	0.008
Clustered SE	(0.019)	(0.019)	(0.017)	(0.022)	(0.018)	(0.019)	(0.024)	(0.031)
Pseudo R <sup>2</sup>	0.266	0.085	0.063	0.064	0.120	0.166	0.063	0.055
<i>observations</i>	<i>2,954</i>	<i>2,954</i>	<i>2,954</i>	<i>1,372</i>	<i>2,910</i>	<i>2,784</i>	<i>1,794</i>	<i>1,365</i>
<b>RA<sub><math>\frac{t-1,t-2,t-3,t-4}{5}</math></sub></b>	-0.066**	-0.067**	-0.075***	-0.031	-0.043*	-0.064**	-0.037	0.012
Clustered SE	(0.022)	(0.023)	(0.020)	(0.025)	(0.022)	(0.023)	(0.030)	(0.039)
Pseudo R <sup>2</sup>	0.266	0.086	0.065	0.065	0.121	0.167	0.063	0.055
<i>observations</i>	<i>2,954</i>	<i>2,954</i>	<i>2,954</i>	<i>1,372</i>	<i>2,910</i>	<i>2,784</i>	<i>1,794</i>	<i>1,365</i>

Notes: \* 10%, \*\* 5% and \*\*\* 1% significance.

Control variables are gender, age, education, mother's education, marital status and number of children.

Table 21: Analyses with Average Risk-Aversion Variables on Current Behaviors - Restricted Sample - 6 years

Probit estimations without controls							Self	Public
	Smoke	Drink	Gamble	Risky asset	Debt	Employed	employed	sector
<b>RA<sub>t</sub></b>	-0.082***	-0.065***	-0.057**	-0.039	-0.044*	-0.065***	0.011	-0.021
Clustered SE	(0.018)	(0.019)	(0.019)	(0.020)	(0.018)	(0.018)	(0.025)	(0.035)
Pseudo R <sup>2</sup>	0.010	0.007	0.005	0.002	0.003	0.007	0.000	0.001
observations	1,506	1,506	1,506	1,166	1,472	1,430	894	692
<b>RA<sub>t-1</sub></b>	-0.071***	-0.051**	-0.049**	-0.004	-0.035*	-0.059**	-0.009	0.001
Clustered SE	(0.017)	(0.019)	(0.018)	(0.020)	(0.018)	(0.018)	(0.026)	(0.035)
Pseudo R <sup>2</sup>	0.008	0.004	0.004	0.000	0.002	0.006	0.000	0.000
observations	1,506	1,506	1,506	1,166	1,472	1,430	894	692
<b>RA<sub>t-2</sub></b>	-0.098***	-0.093***	-0.076***	-0.008	-0.035	-0.074***	-0.002	-0.021
Clustered SE	(0.018)	(0.020)	(0.019)	(0.020)	(0.018)	(0.019)	(0.027)	(0.037)
Pseudo R <sup>2</sup>	0.014	0.013	0.009	0.000	0.002	0.008	0.000	0.001
observations	1,506	1,506	1,506	1,166	1,472	1,430	894	692
<b>RA<sub>t-3</sub></b>	-0.088***	-0.061***	-0.096***	-0.019	-0.052**	-0.052**	0.021	-0.008
Clustered SE	(0.017)	(0.018)	(0.018)	(0.019)	(0.017)	(0.018)	(0.026)	(0.034)
Pseudo R <sup>2</sup>	0.013	0.007	0.016	0.001	0.005	0.005	0.001	0.000
observations	1,506	1,506	1,506	1,166	1,472	1,430	894	692
<b>RA<sub>t-4</sub></b>	-0.089***	-0.089***	-0.073***	-0.015	-0.040*	-0.073***	0.018	-0.014
Clustered SE	(0.017)	(0.019)	(0.018)	(0.019)	(0.017)	(0.018)	(0.025)	(0.036)
Pseudo R <sup>2</sup>	0.014	0.014	0.009	0.000	0.003	0.009	0.001	0.000
observations	1,506	1,506	1,506	1,166	1,472	1,430	894	692
<b>RA<sub>t-5</sub></b>	-0.076***	-0.070***	-0.055**	-0.018	-0.024	-0.032	-0.021	0.005
Clustered SE	(0.016)	(0.018)	(0.017)	(0.019)	(0.017)	(0.017)	(0.024)	(0.031)
Pseudo R <sup>2</sup>	0.010	0.009	0.006	0.001	0.001	0.002	0.001	0.000
observations	1,506	1,506	1,506	1,166	1,472	1,430	894	692
<b>RA<sub><math>\frac{t,t-1}{2}</math></sub></b>	-0.099***	-0.075***	-0.069**	-0.027	-0.051*	-0.081***	0.002	-0.013
Clustered SE	(0.020)	(0.022)	(0.021)	(0.023)	(0.020)	(0.021)	(0.029)	(0.039)
Pseudo R <sup>2</sup>	0.012	0.007	0.006	0.001	0.003	0.008	0.000	0.000
observations	1,506	1,506	1,506	1,166	1,472	1,430	894	692
<b>RA<sub><math>\frac{t,t-2}{2}</math></sub></b>	-0.119***	-0.105***	-0.088***	-0.031	-0.052*	-0.092***	0.007	-0.027
Clustered SE	(0.021)	(0.023)	(0.022)	(0.023)	(0.021)	(0.021)	(0.029)	(0.041)
Pseudo R <sup>2</sup>	0.016	0.013	0.009	0.001	0.003	0.010	0.000	0.001
observations	1,506	1,506	1,506	1,166	1,472	1,430	894	692
<b>RA<sub><math>\frac{t,t-3}{2}</math></sub></b>	-0.111***	-0.083***	-0.102***	-0.037	-0.063**	-0.077***	0.021	-0.019
Clustered SE	(0.020)	(0.022)	(0.021)	(0.022)	(0.020)	(0.021)	(0.029)	(0.039)
Pseudo R <sup>2</sup>	0.015	0.009	0.013	0.002	0.005	0.007	0.001	0.000
observations	1,506	1,506	1,506	1,166	1,472	1,430	894	692
<b>RA<sub><math>\frac{t,t-4}{2}</math></sub></b>	-0.116***	-0.105***	-0.088***	-0.035	-0.056**	-0.094***	0.020	-0.023
Clustered SE	(0.020)	(0.022)	(0.021)	(0.023)	(0.020)	(0.021)	(0.029)	(0.042)
Pseudo R <sup>2</sup>	0.016	0.014	0.010	0.002	0.004	0.011	0.001	0.001
observations	1,506	1,506	1,506	1,166	1,472	1,430	894	692
<b>RA<sub><math>\frac{t,t-5}{2}</math></sub></b>	-0.110***	-0.094***	-0.078***	-0.038	-0.046*	-0.066**	-0.008	-0.011
Clustered SE	(0.020)	(0.022)	(0.021)	(0.023)	(0.020)	(0.021)	(0.029)	(0.037)
Pseudo R <sup>2</sup>	0.015	0.011	0.008	0.002	0.003	0.005	0.000	0.000
observations	1,506	1,506	1,506	1,166	1,472	1,430	894	692
<b>RA<sub><math>\frac{t,t-1,t-2,t-3,t-4,t-5}{6}</math></sub></b>	-0.147***	-0.126***	-0.119***	-0.029	-0.066**	-0.103***	0.005	-0.016
Clustered SE	(0.023)	(0.025)	(0.024)	(0.026)	(0.023)	(0.024)	(0.033)	(0.044)
Pseudo R <sup>2</sup>	0.020	0.015	0.014	0.001	0.004	0.010	0.000	0.000
observations	1,506	1,506	1,506	1,166	1,472	1,430	894	692

Notes: \* 10%, \*\* 5% and \*\*\* 1% significance.

Table 22: Analyses with Average Risk-Aversion Variables on Current Behaviors - Restricted Sample - 6 years

Probit estimations with controls							Self	Public
	Smoke	Drink	Gamble	Risky asset	Debt	Employed	employed	sector
<b>RA<sub>t</sub></b>	-0.028	-0.033	-0.022	-0.037	-0.033	-0.047*	0.013	-0.049
Clustered SE	(0.023)	(0.023)	(0.022)	(0.024)	(0.021)	(0.023)	(0.030)	(0.039)
Pseudo R <sup>2</sup>	0.252	0.102	0.100	0.066	0.117	0.160	0.072	0.076
observations	1,191	1,191	1,191	953	1,174	1,129	703	532
<b>RA<sub>t-1</sub></b>	-0.028	-0.016	-0.015	0.004	-0.048*	-0.040	-0.049	-0.013
Clustered SE	(0.022)	(0.022)	(0.022)	(0.023)	(0.021)	(0.022)	(0.030)	(0.042)
Pseudo R <sup>2</sup>	0.252	0.100	0.100	0.064	0.119	0.159	0.076	0.072
observations	1,191	1,191	1,191	953	1,174	1,129	703	532
<b>RA<sub>t-2</sub></b>	-0.039	-0.062**	-0.064**	-0.001	-0.045*	-0.067**	-0.057	-0.035
Clustered SE	(0.023)	(0.023)	(0.023)	(0.023)	(0.022)	(0.023)	(0.031)	(0.044)
Pseudo R <sup>2</sup>	0.253	0.105	0.105	0.064	0.119	0.163	0.076	0.074
observations	1,191	1,191	1,191	953	1,174	1,129	703	532
<b>RA<sub>t-3</sub></b>	-0.031	-0.026	-0.064**	-0.009	-0.047*	-0.019	-0.012	-0.017
Clustered SE	(0.021)	(0.022)	(0.021)	(0.022)	(0.020)	(0.021)	(0.029)	(0.043)
Pseudo R <sup>2</sup>	0.252	0.101	0.105	0.065	0.119	0.158	0.072	0.072
observations	1,191	1,191	1,191	953	1,174	1,129	703	532
<b>RA<sub>t-4</sub></b>	-0.042	-0.056*	-0.049*	0.008	-0.045*	-0.051*	-0.016	-0.023
Clustered SE	(0.021)	(0.022)	(0.021)	(0.022)	(0.021)	(0.021)	(0.030)	(0.044)
Pseudo R <sup>2</sup>	0.253	0.105	0.103	0.065	0.119	0.161	0.072	0.073
observations	1,191	1,191	1,191	953	1,174	1,129	703	532
<b>RA<sub>t-5</sub></b>	-0.053**	-0.053*	-0.023	-0.008	-0.032	-0.027	-0.060*	-0.006
Clustered SE	(0.020)	(0.021)	(0.020)	(0.021)	(0.020)	(0.021)	(0.028)	(0.036)
Pseudo R <sup>2</sup>	0.255	0.105	0.100	0.065	0.118	0.158	0.078	0.072
observations	1,191	1,191	1,191	953	1,174	1,129	703	532
<b>RA<sub><math>\frac{t,t-1}{2}</math></sub></b>	-0.037	-0.031	-0.024	-0.020	-0.053*	-0.057*	-0.025	-0.040
Clustered SE	(0.025)	(0.026)	(0.025)	(0.026)	(0.024)	(0.026)	(0.034)	(0.044)
Pseudo R <sup>2</sup>	0.252	0.101	0.100	0.065	0.119	0.160	0.073	0.074
observations	1,191	1,191	1,191	953	1,174	1,129	703	532
<b>RA<sub><math>\frac{t,t-2}{2}</math></sub></b>	-0.045	-0.064*	-0.057*	-0.025	-0.053*	-0.077**	-0.027	-0.055
Clustered SE	(0.026)	(0.027)	(0.026)	(0.027)	(0.025)	(0.027)	(0.035)	(0.046)
Pseudo R <sup>2</sup>	0.253	0.104	0.103	0.065	0.119	0.163	0.073	0.075
observations	1,191	1,191	1,191	953	1,174	1,129	703	532
<b>RA<sub><math>\frac{t,t-3}{2}</math></sub></b>	-0.040	-0.039	-0.059*	-0.029	-0.054*	-0.044	-0.000	-0.044
Clustered SE	(0.025)	(0.026)	(0.025)	(0.027)	(0.024)	(0.026)	(0.034)	(0.046)
Pseudo R <sup>2</sup>	0.253	0.102	0.103	0.065	0.119	0.159	0.072	0.074
observations	1,191	1,191	1,191	953	1,174	1,129	703	532
<b>RA<sub><math>\frac{t,t-4}{2}</math></sub></b>	-0.048	-0.061*	-0.049	-0.018	-0.053*	-0.067**	-0.003	-0.047
Clustered SE	(0.026)	(0.027)	(0.025)	(0.027)	(0.025)	(0.026)	(0.034)	(0.048)
Pseudo R <sup>2</sup>	0.253	0.104	0.102	0.065	0.119	0.162	0.072	0.075
observations	1,191	1,191	1,191	953	1,174	1,129	703	532
<b>RA<sub><math>\frac{t,t-5}{2}</math></sub></b>	-0.057*	-0.062*	-0.031	-0.029	-0.045	-0.051*	-0.037	-0.036
Clustered SE	(0.025)	(0.026)	(0.025)	(0.026)	(0.024)	(0.026)	(0.034)	(0.042)
Pseudo R <sup>2</sup>	0.254	0.104	0.100	0.065	0.118	0.160	0.074	0.073
observations	1,191	1,191	1,191	953	1,174	1,129	703	532
<b>RA<sub><math>\frac{t,t-1,t-2,t-3,t-4,t-5}{6}</math></sub></b>	-0.066*	-0.074*	-0.070*	-0.012	-0.074**	-0.074*	-0.056	-0.041
Clustered SE	(0.028)	(0.030)	(0.029)	(0.030)	(0.028)	(0.029)	(0.040)	(0.053)
Pseudo R <sup>2</sup>	0.254	0.105	0.103	0.065	0.120	0.161	0.075	0.073
observations	1,191	1,191	1,191	953	1,174	1,129	703	532

Notes: \* 10%, \*\* 5% and \*\*\* 1% significance.

Control variables are gender, age, education, mother's education, marital status and number of children.



## 5 Conclusion

This paper asks questions about risk aversion stability over time. Surveys often take for granted that risk aversion is innate and time-invariant, resulting in a single measure of individual preference toward risk. We ask whether risk aversion collected just once can really be a valid measure. In order to test this hypothesis, we first find evidence of risk aversion variance on a yearly basis using the Osaka panel, where self-reported risk aversion is collected every year from 2003 to 2010. We then present evidence that the time variation is not merely noise, as it also varies with income, age, and health variations. As income increases, risk aversion decreases. Individuals who grow more anxious about their health become more averse to risk. The older an individual, the more risk averse s/he is. Hence, we find that risk aversion is indeed correlated with time-variant components as well as time-invariant factors. We find the determinants of risk aversion using the random-effects model built by [Mundlak \(1978\)](#). In terms of within-individual variation over time, income variation is negatively correlated, age variation is positively correlated, and higher education variation is negatively correlated with risk aversion. Between-variation across individuals is estimated using the panel average of each variable such as gender, income, age, health status, employment status, indebtedness, marital status, number of children, and education. The characteristics that explain individual risk aversion levels the most are being women (+), being older (+), being anxious about health (+), having debts (-), and education level (-). These results clearly highlight the time-variant and time-invariant components of risk aversion. Our question then is whether time-invariant factors play a large role in predicting risk-related behaviors. If so, collecting the risk aversion measure just once would be problematic because it would generate measurement errors. However, using various lagged risk-aversion variables and different averages, we find that lagged variables still have predictive power when it comes to behavior adopted by individuals. The inference is that what matters most when predicting behavior is between-variations across individuals, rather than the time-varying component within individuals. This

means that we can still use the risk aversion difference between individuals as a good predictor to explain different behaviors across individuals. Yet better predictive power is obtained when using the average of risk aversion over the years. This could point to a possible improvement in survey design, suggesting that risk aversion be collected not just once, but at least every two years if we want to capture the time-variant component of risk aversion.

## References

- ANDERSEN, S., G. W. HASSISON, M. I. LAU AND E. E. RUTSTROM, “Lost in State Space: Are Preferences Stable?,” *International Economic Review* 49(3) (2008), 1091–1112.
- ANDERSON, L. R. AND J. M. MELLOR, “Predicting health behaviors with an experimental measure of risk preference,” *Journal of Health Economics* 27 (2008), 1260–1274.
- BARSKY, R. B., F. T. JUSTER, M. S. KIMBALL AND M. D. SHAPIRO, “Preference Parameters and Behavioral Heterogeneity: An Experimental Approach in the Health and Retirement Study,” *The Quarterly Journal of Economics* 112 (May 1997), 537–79.
- BAUCELLS, M. AND A. VILLASS, “Stability of risk preferences and the reflection effect of prospect theory,” *Theory and Decision* 68 (2010), 193–211.
- BERTRAND, M., *New Perspectives on Gender*, volume 4 of *Handbook of Labor Economics*, chapter 17 (Elsevier, 2011), 1543–1590.
- BINSWANGER, H. P., “Attitudes toward risk: Experimental measurement in rural India,” *American Journal of Agricultural Economics* 62 (1980), 395–407.
- BONANNO, G. A., C. R. BREWIN, K. KANIASTY AND A. M. LA GRECA, “Weighing the Costs of Disaster: Consequences, Risks, and Resilience in Individuals, Families, and Communities,” *Psychological Science* 2(1) (2010), 1–49.
- BOYCE, C., A. WOOD AND N. POWDTHAVEE, “Is Personality Fixed? Personality Changes as Much as “Variable” Economic Factors and More Strongly Predicts Changes to Life Satisfaction,” *Social Indicators Research* 111 (2013), 287–305.
- BRANDT, M. W. AND K. Q. WANG, “Time-varying risk aversion and unexpected inflation,” *Journal of Monetary Economics* 50 (2003), 1457 – 1498.

- BRUNNERMEIER, M. K. AND S. NAGEL, "Do Wealth Fluctuations Generate Time-Varying Risk Aversion? Micro-Evidence on Individuals' Asset Allocation," *The American Economic Review* 98 (2008), pp. 713–736.
- CAMPBELL, J. Y. AND J. H. COCHRANE, "By Force of Habit: A Consumption-Based Explanation of Aggregate Stock Market Behavior," *Journal of Political Economy* 107 (1999), pp. 205–251.
- CONSTANTINIDES, G. M., "Habit Formation: A Resolution of the Equity Premium Puzzle," *Journal of Political Economy* 98 (1990), pp. 519–543.
- CROSON, R. AND U. GNEEZY, "Gender Differences in Preferences," *Journal of Economic Literature* 47 (June 2009), 448–74.
- DE MARTINO, B., C. F. CAMERER AND R. ADOLPHS, "Amygdala damage eliminates monetary loss aversion," *Proceedings of the National Academy of Sciences* 107 (2010), 3788–3792.
- DEONANDAN, R. AND A. BACKWELL, "Driving Deaths and Injuries Post-9 11," *International Journal of General Medicine* 4 (2011), 803–807.
- DING, X., J. HARTOG AND Y. SUN, "Can We Measure Individual Risk Attitudes in a Survey?," IZA Discussion Paper Series, March 2010.
- DOHMEN, T., A. FALK, D. HUFFMAN AND U. SUNDE, "Are Risk Aversion and Impatience related to Cognitive Ability?," *American Economic Review* 100 (June 2010), 1238–1260.
- DOHMEN, T., A. FALK, D. HUFFMAN, U. SUNDE, J. SCHUPP AND G. G. WAGNER, "Individual Risk Attitudes: Measurement, Determinants, And Behavioral Consequences," *Journal of the European Economic Association* 9 (2011), 522–550.
- GUIISO, L., P. SAPIENZA AND L. ZINGALES, "Time Varying Risk Aversion," *Working Paper* (April 2013).

- HARDEWEG, B., L. MENKHOFF AND H. WAIBEL, "Experimental validated survey evidence on individual risk attitudes in rural Thailand," Discussion Paper No 464, April 2012.
- HARRISON, J., J. YOUNG, P. BUTOW, G. SALKELD AND M. SOLOMON, "Is it worth the risk? A systematic review of instruments that measure risk propensity for use in the health setting," *Social Science and Medicine* 60 (2005), 1385–1396.
- HOLT, C. A. AND S. K. LAURY, "Risk Aversion and Incentive Effects," *American Economic Review* 92 (December 2002), 1644–1655.
- KIHLSTROM, R. E., D. ROMER AND S. WILLIAMS, "Risk Aversion with Random Initial Wealth," *Econometrica* 49 (June 1981), 911–20.
- LUCAS, R. E. AND M. DONNELLAN, "Personality development across the life span: longitudinal analyses with a national sample from Germany.," *Journal of Personality and Social Psychology* 101 (2011), 847–861.
- MALMENDIER, U. AND S. NAGEL, "Depression Babies: Do Macroeconomic Experiences Affect Risk Taking?," *The Quarterly Journal of Economics* 126 (2011), 373–416.
- MUNDLAK, Y., "On the Pooling of Time Series and Cross Section Data," *Econometrica* 46 (January 1978), 69–85.
- SAHM, C., "How Much Does Risk Tolerance Change?," *Federal Reserve Board, Finance and Economics Discussion Series* 2007-66 (2008).
- STAW, B. M., "Knee-deep in the big muddy: a study of escalating commitment to a chosen course of action," *Organizational Behavior and Human Performance* 16 (1976), 27 – 44.
- THALER, R. H. AND E. J. JOHNSON, "Gambling with the House Money and Trying to Break Even: The Effects of Prior Outcomes on Risky Choice," *Management Science* 36 (6) (1990), 643–660.

TISON, A., B. DAVIN, B. VENTELOU AND A. PARAPONARIS, “Influence of deseases on risk aversion through time,” *Working Paper, Aix Marseille School of Economics* (2012).

TYMULA, A., L. A. ROSENBERG BELMAKER, L. RUDERMAN, P. W. GLIMCHER AND I. LEVY, “Like cognitive function, decision making across the life span shows profound age-related changes,” *Proceedings of the National Academy of Sciences* (2013).

WEBER, M. AND H. ZUCHEL, “How do Prior Outcomes Affect Risk Attitude? Comparing Escalation of Commitment and the House Money Effect.,” *Decision Anal* 2(1) (2005), 30–43.