



**HAL**  
open science

# Why Do Markets Crash? Bitcoin Data Offers Unprecedented Insights

Jonathan Donier, Jean-Philippe Bouchaud

► **To cite this version:**

Jonathan Donier, Jean-Philippe Bouchaud. Why Do Markets Crash? Bitcoin Data Offers Unprecedented Insights. PLoS ONE, 2015, 10 (10), pp.e0139356. 10.1371/journal.pone.0139356.g006 . hal-01277584

**HAL Id: hal-01277584**

**<https://hal.sorbonne-universite.fr/hal-01277584>**

Submitted on 22 Feb 2016

**HAL** is a multi-disciplinary open access archive for the deposit and dissemination of scientific research documents, whether they are published or not. The documents may come from teaching and research institutions in France or abroad, or from public or private research centers.

L'archive ouverte pluridisciplinaire **HAL**, est destinée au dépôt et à la diffusion de documents scientifiques de niveau recherche, publiés ou non, émanant des établissements d'enseignement et de recherche français ou étrangers, des laboratoires publics ou privés.



Distributed under a Creative Commons Attribution 4.0 International License

RESEARCH ARTICLE

# Why Do Markets Crash? Bitcoin Data Offers Unprecedented Insights

Jonathan Donier<sup>1,2,3\*</sup>, Jean-Philippe Bouchaud<sup>1,4</sup>

**1** Capital Fund Management, 23–25 Rue de l'Université, 75007 Paris, France, **2** Laboratoire de Probabilités et Modèles Aléatoires, Université Pierre et Marie Curie (Paris 6), 4 Place Jussieu, 75005 Paris, France, **3** Ecole des Mines ParisTech, 60 Boulevard Saint-Michel, 75006 Paris, France, **4** CFM-Imperial Institute of Quantitative Finance, Department of Mathematics, Imperial College, 180 Queen's Gate, London SW7 2RH, United Kingdom

\* [jonathan.donier@polytechnique.org](mailto:jonathan.donier@polytechnique.org)

## Abstract

Crashes have fascinated and baffled many canny observers of financial markets. In the strict orthodoxy of the efficient market theory, crashes must be due to sudden changes of the fundamental valuation of assets. However, detailed empirical studies suggest that large price jumps cannot be explained by news and are the result of endogenous feedback loops. Although plausible, a clear-cut empirical evidence for such a scenario is still lacking. Here we show how crashes are conditioned by the market liquidity, for which we propose a new measure inspired by recent theories of market impact and based on readily available, public information. Our results open the possibility of a dynamical evaluation of liquidity risk and early warning signs of market instabilities, and could lead to a quantitative description of the mechanisms leading to market crashes.



## OPEN ACCESS

**Citation:** Donier J, Bouchaud J-P (2015) Why Do Markets Crash? Bitcoin Data Offers Unprecedented Insights. PLoS ONE 10(10): e0139356. doi:10.1371/journal.pone.0139356

**Editor:** Mikael Bask, Uppsala University, SWEDEN

**Received:** March 23, 2015

**Accepted:** September 11, 2015

**Published:** October 8, 2015

**Copyright:** © 2015 Donier, Bouchaud. This is an open access article distributed under the terms of the [Creative Commons Attribution License](https://creativecommons.org/licenses/by/4.0/), which permits unrestricted use, distribution, and reproduction in any medium, provided the original author and source are credited.

**Data Availability Statement:** Bitcoin trades data are available at <http://api.bitcoincharts.com/v1/csv/>. DOI of Bitcoin order book data: [10.5061/dryad.325ts](https://doi.org/10.5061/dryad.325ts).

**Funding:** The authors have no support or funding to report.

**Competing Interests:** The authors have declared that no competing interests exist.

## Introduction

Why do market prices move? This simple question has fuelled fifty years of academic debate, reaching a climax with the 2013 Nobel prize in economics, split between Fama and Shiller who promote radically different views on the question [1]. Whereas Fama argues that markets are efficient and prices faithfully reflect fundamental values, Shiller has shown that prices fluctuate much more than what efficient market theory would suggest, and has insisted on the role of behavioural biases as a source of excess volatility and price anomalies. Of particular importance is the origin of the largest changes in prices, aka market crashes, that may have dire consequences not only for market participants but also for the society as a whole [2]. It is fair to say that after centuries of market folly [3–6], there is no consensus on this issue. Many studies [7–9] have confirmed the insight of Cutler, Poterba & Summers [10] who concluded that *[t]he evidence that large market moves occur on days without identifiable major news casts doubts on the view that price movements are fully explicable by news. . .* The fact that markets appear to crash in the absence of any remarkable event suggests that destabilising feedback loops of behavioural origin may be at play [11–14]. Although plausible, a clear-cut empirical evidence for such an endogenous scenario is still lacking. After all, crashes are not that frequent and a

convincing statistical analysis is difficult, in particular because of the lack of relevant data about the dynamics of supply and demand during these episodes.

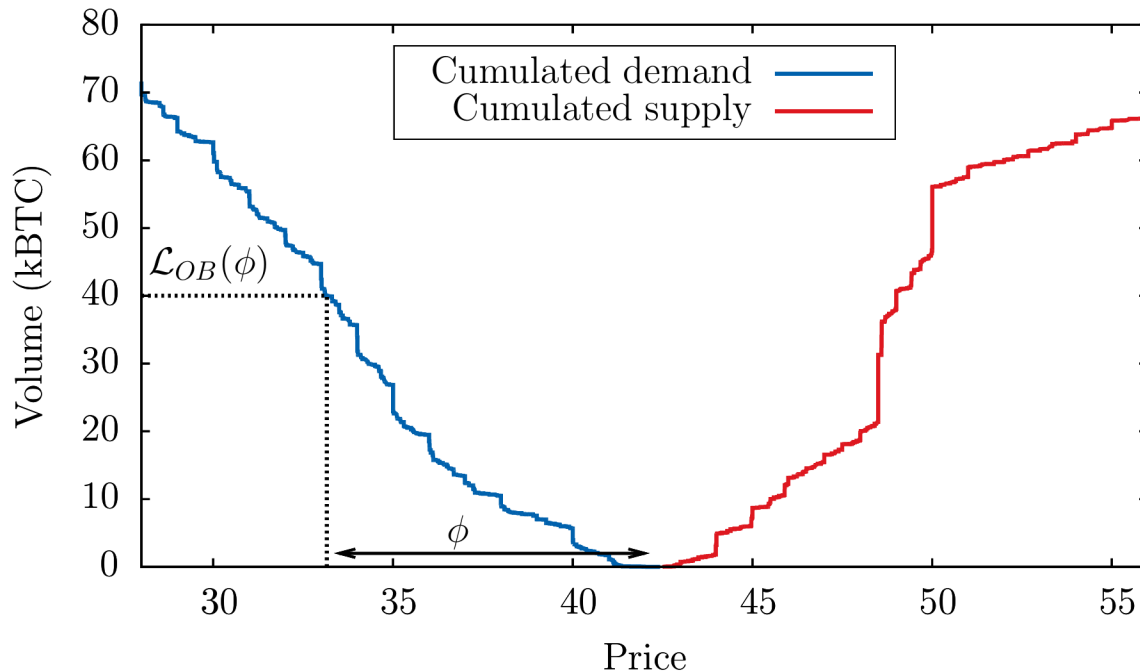
In this respect, the Bitcoin [15–17] market is quite unique on many counts. In particular, the absence of any compelling way to assess the fundamental price of Bitcoins makes the behavioral hypothesis highly plausible. For our purpose, the availability of the full order book (i.e. the record of all intentions to buy or sell at a given point in time, each volume coming with an offering price) at all times provides precious insights, in particular before and during extreme events. Indeed, at variance with most financial markets where participants hide their intentions, the orders are placed long in advance by Bitcoin traders over large price ranges. Using two highly informative data-sets—the trade-by-trade MtGox data between December 2011 and January 2014, and the full order book data over the same period—we analyse in depth the liquidity of the Bitcoin market. We find that what caused the crash was not the selling pressure per se, but rather the dearth of buyers that stoked the panic. Following up on this observation, we show that three different liquidity measures that aim at quantifying the presence of buyers (or sellers) are highly correlated and correctly predict the amplitude of potential crashes. Whereas two of them are direct probes of the prevailing liquidity but difficult to access on financial markets, the third one—which is also firmly anchored theoretically [18]—only uses readily available, public information on traded volumes and volatility, and is therefore a promising candidate for monitoring the propensity of a market to crash.

## Results

### Anatomy of April 10, 2013 crash

Amongst all crashes that happened on the Bitcoin and for which we found some data, the April 10, 2013 crash is probably the most interesting one since on that day the price dropped by more than 50% of its value in a few hours. At that time, MtGox was by far the leading exchange (its market share was over 80% on the BTC/USD spot market) so our data-set captures a large fraction of the investors' behaviour. Intuitively, the main driver of market crashes is the mismatch between the aggregate market order flow imbalance ( $\mathcal{O}$ , defined below) that becomes strongly negative and the prevailing liquidity on the buy side, i.e. the density of potential buyers below the current price. Whereas the former quantity can be easily reconstructed from the series of trades, the notion of “prevailing liquidity” is only at best ambiguous. It is only when the price starts heading down, that one expects most of the interested buyers to declare themselves and post orders in the order book. Therefore, the liquidity cannot in principle be directly inferred from the information on the publicly available order book. The dynamic nature of liquidity has been clearly evidenced [19, 20], and has led to the notion of “latent” liquidity that underpins recent theories of impact in financial markets [18, 21–23].

However, Bitcoin is quite an exceptional market in this respect, since a large fraction of the liquidity is not latent, but actually posted in the order book—possibly resulting from less strategic participants on a still exotic market—and thus directly observable (see Fig 1). A more quantitative analysis indeed shows that typically 30 – 40% of the volume traded during the day is already present in the order book in the morning. This is to be compared with a ratio below 1% on more traditional financial markets, say stocks (the total volume in the order book of major stocks is 5–10 times the volume at the best quotes, which is itself  $\sim 10^{-3}$  of the daily turnover, see e.g. [24]). This allows us to test in detail the respective roles of aggregate imbalance and liquidity in the triggering of market crashes. We first study the “aggressive” order flow defined as the aggregated imbalance of market orders for every 4 hours window between January 2013 and August 2013. In fact, two definitions are possible. One is defined as the average of the signed number of Bitcoin contracts sent as market orders (i.e. orders to trade immediately at



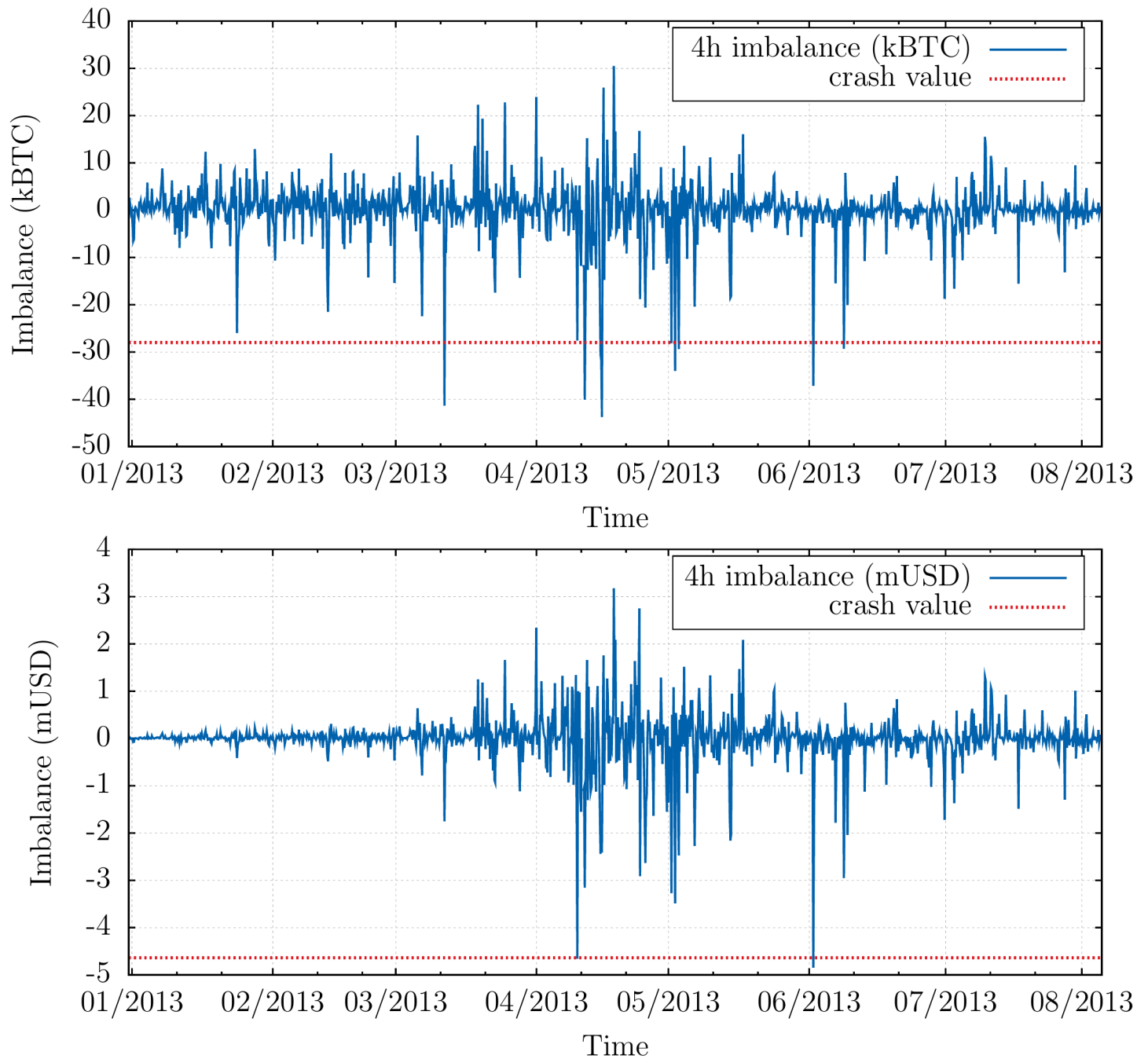
**Fig 1. Instantaneous cumulated order book.** Snapshot of the cumulated supply and demand displayed on the order book taken on March 8, 2013, with a graphical representation of the order book liquidity  $\mathcal{L}_{OB}(\phi)$  defined in Def. 1.

doi:10.1371/journal.pone.0139356.g001

the best available price)  $\mathcal{O}_B = \sum_i \epsilon_i q_i$ , where each  $i$  is a different market order of sign  $\epsilon_i$  ( $\epsilon_i = +1$  for buyer-initiated trades and  $-1$  for seller-initiated trades) and number of contracts  $q_i$ , and the sum runs over consecutive trades in a 4 hour window. The second is the volume imbalance expressed in USD:  $\mathcal{O}_S = \sum_i \epsilon_i q_i p_i$ , where  $p_i$  is the  $i$ -th transaction price. These two quantities are shown in Fig 2 and reveal that (a) large sell episodes are more intense than large buy episodes; (b) when expressed in Bitcoin, the sell-off that occurred on April, 10 (of order of 30,000 BTC on a 4h window) is not more spectacular than several other sell-offs that happened before or after that day; (c) however, when expressed in USD, the April 10 sell-off indeed appears as an outlier.

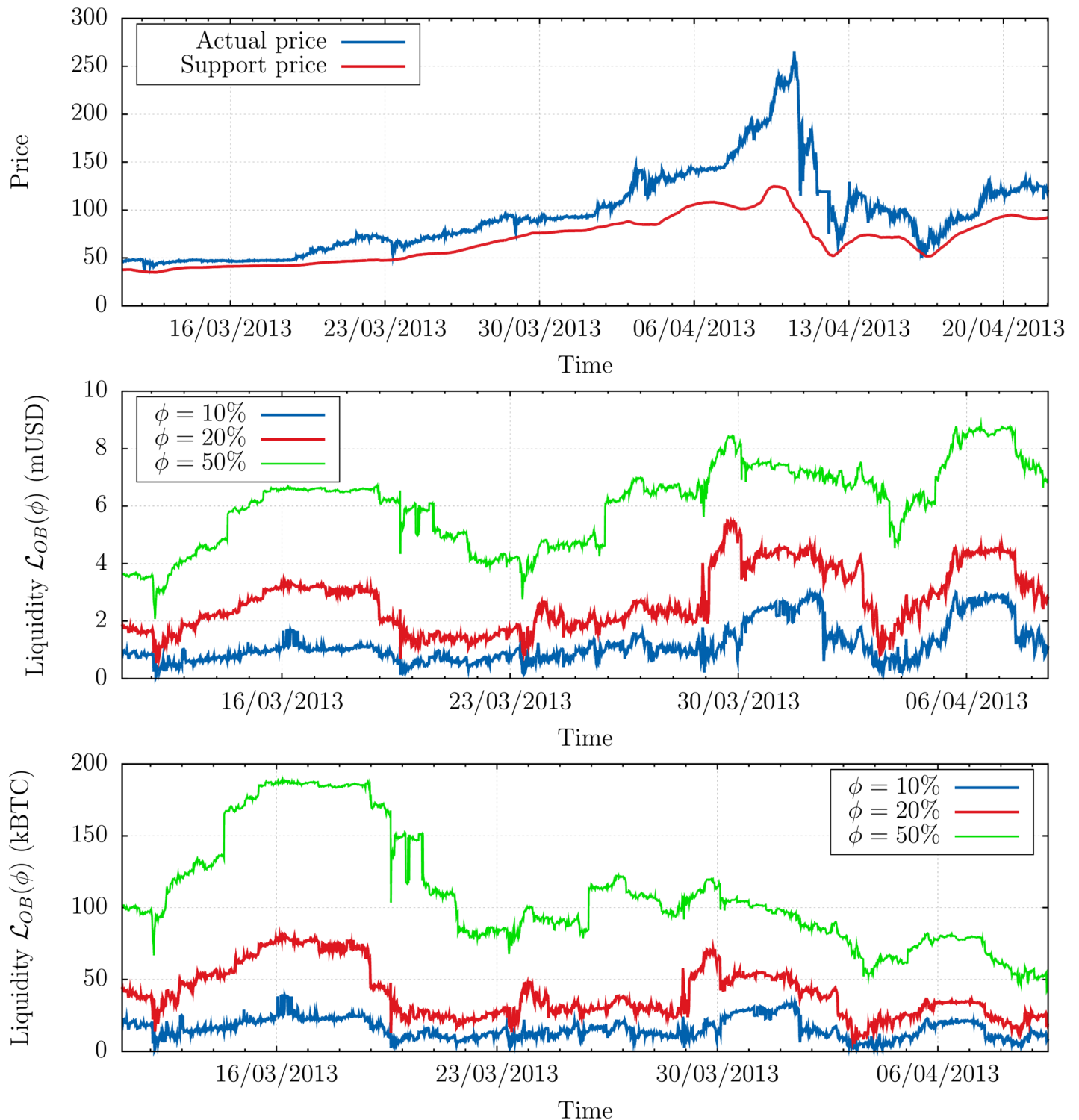
The difference between  $\mathcal{O}_B$  and  $\mathcal{O}_S$  originates from the fact that a large fraction of this selling activity occurred at the peak of the “bubble” that preceded the crash, see Fig 3, top. The BTC price rose from \$13 in early January to \$260 just before the crash. In Fig 3, we represent a “support” level  $p_s^{40k}$  such that the total quantity of buy orders between  $p_s^{40k}$  and the current price  $p_t$  is 40,000 BTC, see Fig 1. One notices that the price dramatically departed from the support price during the pre-crash period, which is a clear sign that Bitcoin price was engaged in a bubble. Although the liquidity expressed in USD was actually *increasing* during that period (see Fig 3, middle), the BTC price increased even faster, resulting in a thinner and thinner liquidity on the buy side of the order book *expressed in BTC*, see Fig 3, bottom. This scenario is precisely realised in some Agent Based Models of markets [25].

The conclusion of the above analysis, that may appear trivial, is that the crash occurred because the price was too high, and buyers too scarce to resist the pressure of a sell-off. More interesting is the fact that the knowledge of the volume present in the order book allows one to estimate an expected price drop of  $\approx 50\%$  in the event of a large—albeit not extreme—sell-off.



**Fig 2. Order flow imbalances in USD and BTC.** Top: Aggressive imbalance in order flow  $\sum_j \epsilon_j v_j$  (where  $\epsilon_j = \pm 1$  is the sign of the transaction, and  $v_j$  its volume in Bitcoins), aggregated over periods of 4 hours between January 2013 and August 2013, expressed in Bitcoins. April 10, 2013 (for which the realised imbalance is represented as a dashed horizontal line) does not appear as an outlier. Bottom: aggressive imbalance in order flow  $\sum_j \epsilon_j v_j p_j$ , aggregated over periods of 4 hours between January 2013 and August 2013 and expressed in USD. April 10, 2013 now clearly appears as an outlier.

doi:10.1371/journal.pone.0139356.g002



**Fig 3. Liquidity and support price.** Top: Actual price  $p_t$  (blue) vs. support price  $p_s^{40k}$  (red) defined as the price that would be reached if a typical sell-off of 40,000 BTC was to occur instantaneously. Note that  $p_s^{40k}$  is  $\approx 50\%$  below the price  $p_t$  just before the crash, explaining the order of magnitude of the move that happened that day. Middle (resp. Bottom): Buy volume  $\mathcal{L}_{OB}(\phi)$  in USD (resp. BTC) in the order book, during the months preceding the crash of April 10, 2013, measured as the volume between the current price  $p_t$  and  $p_t(1 - \phi)$  where  $\phi = 10\%$ ,  $20\%$  and  $50\%$ . One can see that for any quantile the liquidity in USD tended to increase by an overall factor  $\approx 2$  during the period, while the liquidity in BTC was decreased by a factor  $\approx 2 - 3$  as an immediate consequence of the bubble.

doi:10.1371/journal.pone.0139356.g003

Of course, the possibility to observe the full demand curve (or a good approximation thereof) is special to the Bitcoin market, and not available in more mainstream markets where the publicly displayed liquidity is only of order 1% of the total daily traded volume. Still, as we show now, one can build accurate proxies of the latent liquidity using observable quantities only, opening the path to early warning signs of an impending crash.

### Three definitions of “liquidity”

More formally, the market liquidity measure discussed above is defined as:

**Definition 1** The order-book liquidity  $\mathcal{L}_{OB}(\phi)$  (on the buy side) is such that (cf. Fig 1 above):

$$\int_{p_t(1-\phi)}^{p_t} dp \rho(p, t) := \mathcal{L}_{OB}(\phi), \tag{1}$$

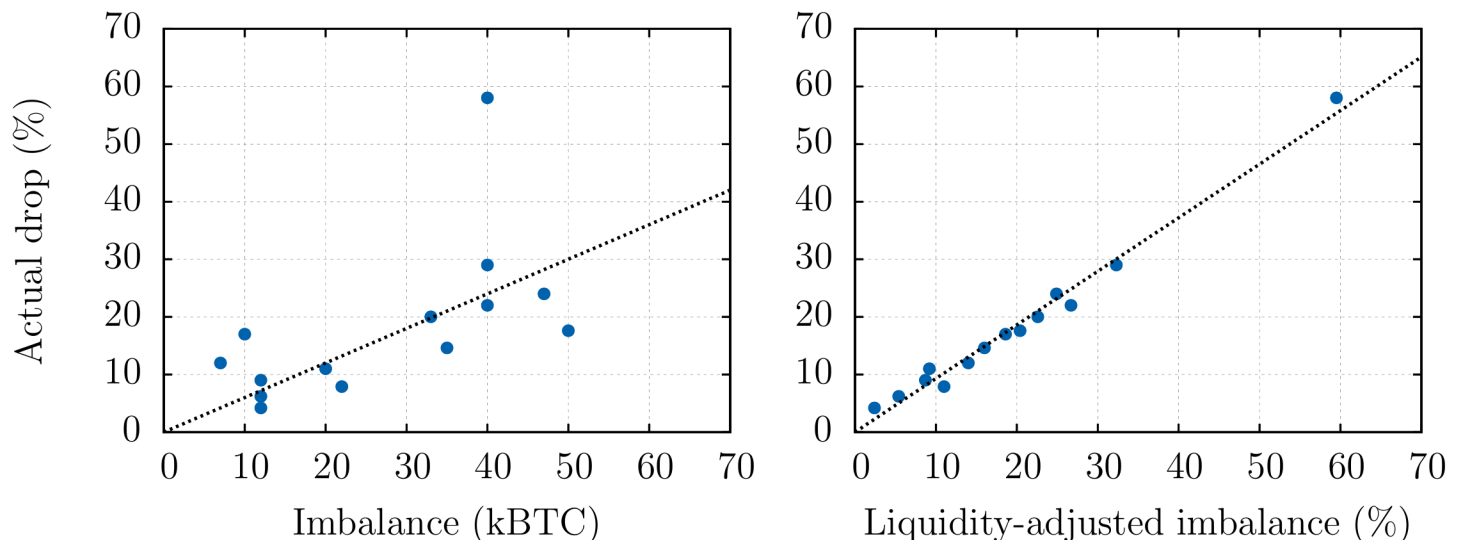
(and similarly for the sell-side). In the above equation,  $p_t$  is the price at time  $t$  and  $\rho(p, t)$  is the density of demand that is materialised on the order book at price  $p$  and at time  $t$ .

Conversely, the price drop  $-\phi^* p_t$  expected if a large instantaneous sell-off of size  $Q^*$  occurs is such that:

$$\phi^* = \mathcal{L}_{OB}^{-1}(Q^*), \tag{2}$$

where  $\mathcal{L}_{OB}^{-1}$  is a measure of illiquidity.

An *a posteriori* comparison between realised returns and the liquidity-adjusted imbalance for the 14 most extreme negative returns that have occurred between Jan 1, 2013 and Apr 10, 2013 is shown in Fig 4. These events, which corresponds to dramatic jumps in the cumulated order flow process, are found to have a characteristic scale of about 4h with a standard deviation of 2.5h, justifying the choice made in Fig 2 to plot imbalances at a 4h time scale. The analysis shows that the quantity  $\mathcal{L}_{OB}^{-1}(\mathcal{O}_B)$  nearly perfectly matches crashes amplitudes, vindicating



**Fig 4. Forecast of crashes amplitudes using order book volumes.** For the 14 most extreme negative returns that have occurred between Jan 1, 2013 and Apr 10, 2013, we compare the realised return with: (Left) the net imbalance  $\mathcal{O}_B$  during the period (usually a few hours) and (Right) the *liquidity-adjusted* imbalance  $\mathcal{L}_{OB}^{-1}(\mathcal{O}_B)$ . This illustrates the relevance of the  $\mathcal{L}_{OB}$  liquidity measure to predict the amplitudes of crashes—even in the most extreme cases.

doi:10.1371/journal.pone.0139356.g004

the hypothesis that most of the liquidity is indeed present in the visible order book for the Bitcoin.

However, as recalled above, the visible order book on standard financial markets usually contains a minute fraction of the real intentions of the agents. Therefore the use of  $\mathcal{L}_{OB}(\phi)$  deduced from the observable order book would lead to a tremendous underestimation of the liquidity in these markets [19, 26]. Liquidity is in fact a dynamic notion, that reveals itself progressively as a reaction (possibly with some lag) to the incoming order flow [19, 20]. Another definition of liquidity, that accounts for the progressive appearance of the latent liquidity as orders are executed, is based on a measure of *market impact*. With enough statistics, the average (relative) price move  $I(Q) = \langle \Delta p/p \rangle$  induced by the execution of a meta-order (i.e. a sequence of individual trades generated by the same trading decision but spread out in time, so as to get a better price and/or not to be detected [21]) can be measured as a function of their total volume  $Q$ . Since these meta-orders are executed on rather long time scales (compared to the transaction frequency), it is reasonable to think that their impact reveals the “true” latent liquidity of markets [18, 21–23]. This leads us to a second definition of liquidity, based on market impact:

**Definition 2** The impact liquidity  $\mathcal{L}_I(\phi)$  is defined as the volume of a meta-order that moves, on average, the price  $p_t$  by  $\pm\phi p_t$ , or, more precisely,  $\mathcal{L}_I(\phi)$  is fixed by the condition:

$$I(\mathcal{L}_I(\phi)) = \phi, \tag{3}$$

since the impact  $I(Q)$  is usually measured in relative terms. As above, the price drop expected if a large sell-off of volume imbalance  $Q^*$  occurs is simply given by  $\mathcal{L}_I^{-1}(Q^*) = I(Q^*)$ .

The problem with this second definition is that it requires proprietary data with sufficient statistics, available only to brokerage firms or to active asset managers/hedge funds. It turns out to be also available for Bitcoin [27]—see below. However, a very large number of empirical studies in the last 15 years have established that the impact of meta-orders follows an extremely robust “square-root law” [21, 22, 27–35]. Namely, *independently* of the asset class, time period, style of trading and micro-structure peculiarities, one has:

$$I_{TH}(Q) \approx Y\sigma_d\sqrt{\frac{Q}{V_d}}, \tag{4}$$

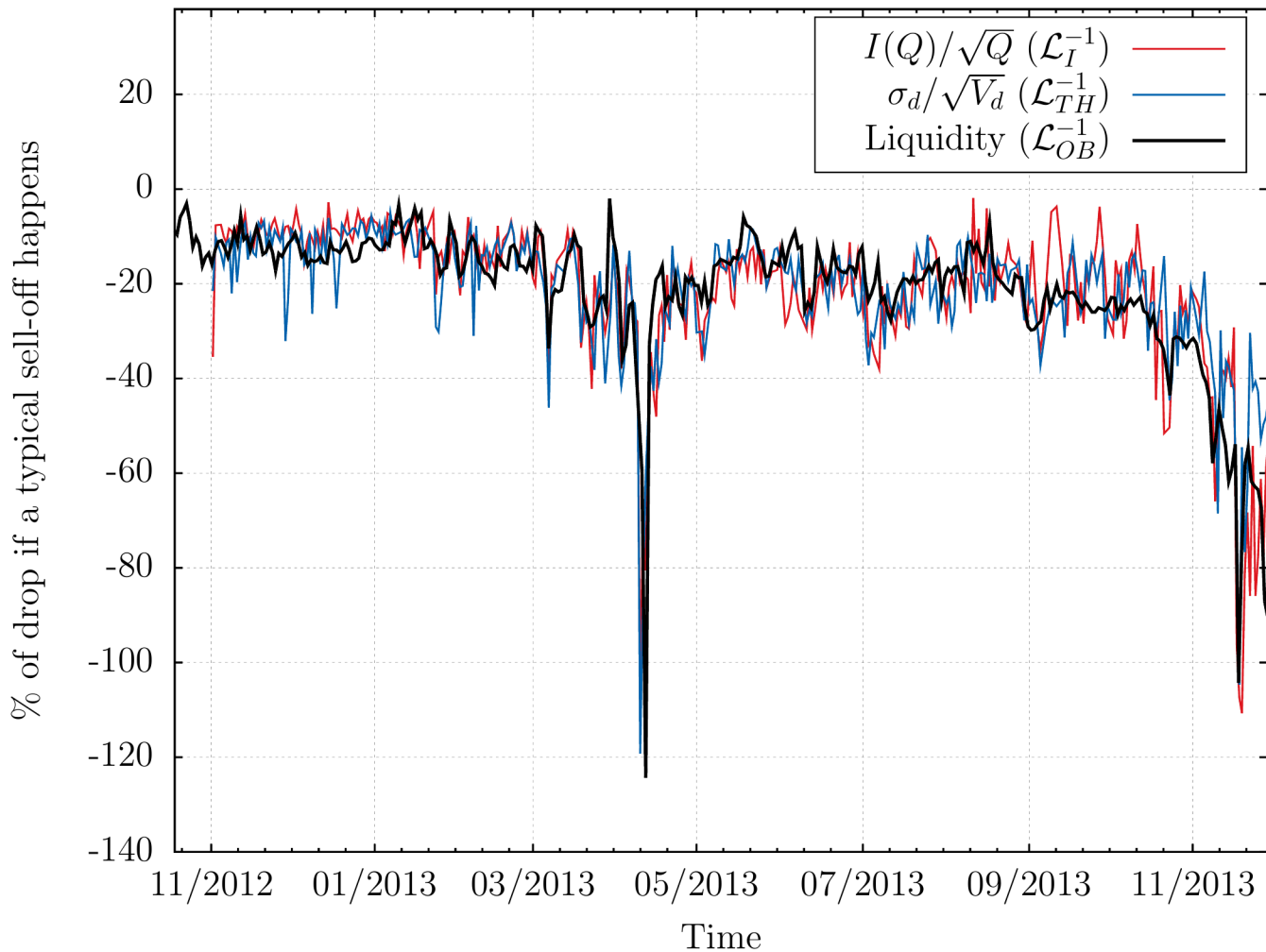
where  $Y$  is an  $a$ -dimensional constant of order unity,  $V_d$  is the daily traded volume and  $\sigma_d$  is the daily volatility. This square-root law has now been justified theoretically by several authors, building upon the notion of latent liquidity [18, 21–23] (see Ref. [36] for an alternative story). Assuming that the above functional shape of market impact is correct leads to a third definition of liquidity:

**Definition 3** The theoretical liquidity  $\mathcal{L}_{TH}(\phi)$  is the theoretical volume of a meta-order required to move the price  $p_t$  by  $\pm\phi p_t$ , according to formula Eq (4) above, i.e.:

$$I_{TH}(\mathcal{L}_{TH}(\phi)) = \phi. \tag{5}$$

Together with Eq (4), this amounts to consider  $\sigma_d/\sqrt{V_d}$  as a measure of market illiquidity. Clearly, since both  $\sigma_d$  and  $V_d$  can be estimated from public market data, this last definition of liquidity is quite congenial. It was proposed in Ref. [37] as a proxy to obtain impact-adjusted marked-to-market valuation of large portfolios, and tested in Ref. [32] on five stock market crashes, with very promising results. However, there is quite a leap of faith in assuming that our above three definitions are—at least approximately—equivalent. This is why the Bitcoin data is quite unique since it allows one to measure all three liquidities  $\mathcal{L}_{OB}$ ,  $\mathcal{L}_I$ ,  $\mathcal{L}_{TH}$  and test quantitatively that they do indeed reveal the very same information.





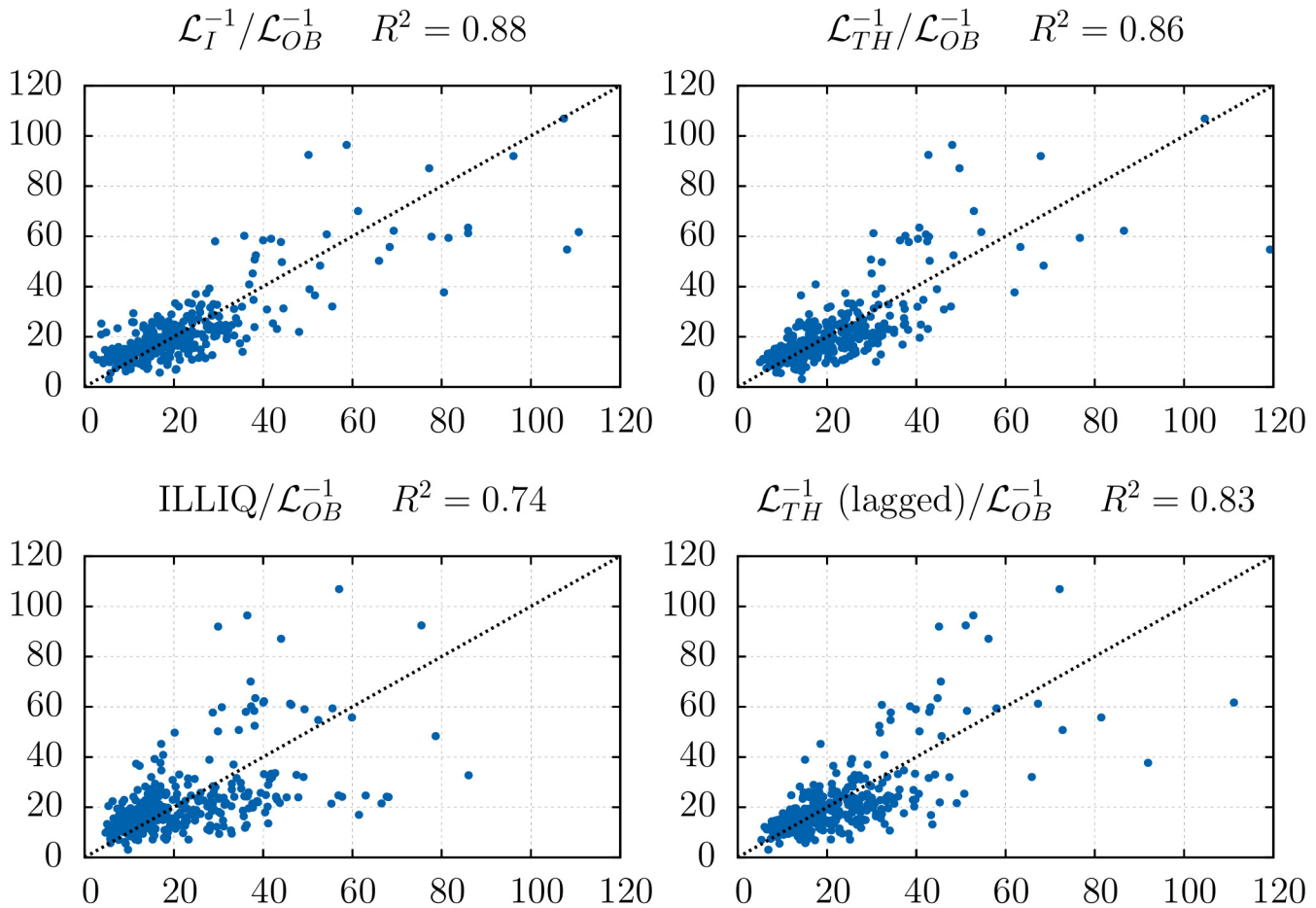
**Fig 5. Comparison between the three (il-)liquidity measures.** Parallel evolution of the three price drops  $\phi^*$  deduced from our three estimates of illiquidity  $\mathcal{L}_{OB}^{-1}, \mathcal{L}_I^{-1}, \mathcal{L}_{TH}^{-1}$  defined above. The estimates based on  $\mathcal{L}_I^{-1}, \mathcal{L}_{TH}^{-1}$  have been rescaled by a factor  $6 \cdot 10^4$  to match the average order book data prediction.

doi:10.1371/journal.pone.0139356.g005

### Comparing the liquidity measures

We measured the order book liquidity  $\mathcal{L}_{OB}$  at the daily scale by averaging the volume present at all prices in the buy side of the order book for each day. The empirical impact is obtained following Ref. [27] by measuring the full  $I(Q)$ , obtained as an average over all meta-orders of a given volume  $Q$  on a given day. Finally, the theoretical impact Eq (4) is obtained by measuring both the traded volume of the day  $V_d$  and the corresponding volatility  $\sigma_d$  (defined as  $\sigma_d^2 = \frac{1}{T} \sum_{t=1}^T (0.5 \ln(H_t/L_t)^2 - (2 \ln(2) - 1) \ln(C_t/O_t)^2)$  where  $O_t/H_t/L_t/C_t$  are the open/high/low/close prices of the sub-periods [38]). The daily scale has been chosen so as to average out market noise and intraday patterns in the measure of  $\mathcal{L}_I^{-1}$  and  $\mathcal{L}_{TH}^{-1}$ , while remaining reactive to liquidity fluctuations: Fig 3 indeed shows how much liquidity can fluctuate in a few days.

These three estimates allow us to compare, as a function of time (between November 2012 and November 2013) the expected price drop for a large sell meta-order of size—say— $Q^* = 40,000$  BTC, see Fig 5. We have rescaled by a constant factor the predictions based on  $\mathcal{L}_I$  and



**Fig 6. Regression of the actual (il-)liquidity against the different (il-)liquidity measures.** Regression of the actual illiquidity  $\mathcal{L}_{OB}^{-1}$  on three same-day illiquidity measures (after rescaling so that the samples means coincide): The direct measure of orders market impact  $\mathcal{L}_I^{-1}$ , the publicly available measure  $\mathcal{L}_{TH}^{-1}$  that corresponds to the theoretical and empirical impact, and the well-known Amihud ILLIQ measure [39]. Both  $\mathcal{L}_I^{-1}$  and  $\mathcal{L}_{TH}^{-1}$  outperform ILLIQ ( $R^2 \approx 0.86$  vs. 0.74). Note that a high predictability remains when lagging  $\mathcal{L}_{TH}^{-1}$  by one day ( $R^2 \approx 0.83$  vs. 0.71). The regression slopes for the four graphs are, respectively: 0.9, 0.95, 0.87 and 0.93.

doi:10.1371/journal.pone.0139356.g006

$\mathcal{L}_{TH}$ , so as to match the average levels. The agreement is quite striking, and shown in a different way in Fig 6 as a scatter plot of  $\mathcal{L}_{OB}^{-1}$  vs  $\mathcal{L}_I^{-1}$  or  $\mathcal{L}_{TH}^{-1}$ , either on the same day, or with a one day lag. As coinciding times, the  $R^2$  of the regressions are  $\approx 0.86$  and only fall to  $\approx 0.83$  with a day lag, meaning that one can use past data to predict the liquidity of tomorrow. As a comparison, when using instead Amihud’s [39] measure of illiquidity  $\sigma_d/V_d$ , one obtains  $R^2$  of resp. 0.74 and 0.71.

That the estimates based on  $\mathcal{L}_I$  and  $\mathcal{L}_{TH}$  match is no surprise since the square-root law was already tested with a high degree of precision on the Bitcoin [27]. But that the theoretical measure of liquidity  $\mathcal{L}_{TH}$  based on easily accessible market data is able to track so closely the information present in the whole order book is truly remarkable, and suggests that one can indeed faithfully use  $\mathcal{L}_{TH}$  on markets where reliable information on the latent order book is absent (as is the case for most markets).

## Discussion

Thanks to the unique features of the Bitcoin market, we have been able to investigate some of the factors that determine the propensity of a market to crash. Two main features emerge from our study. First, the price level should lie within a range where the underlying demand (resp. supply) is able to support large—but expected—fluctuations in supply (resp. demand). When the price is clearly out of bounds (for example the pre-April 2013 period for Bitcoin) the market is unambiguously in a precarious state that can be called a *bubble*. Our main result allows one to make the above idea meaningful in practice. We show that three natural liquidity measures (based, respectively, on the knowledge of the full order book, on the average impact of meta-orders, and on the ratio of the volatility to the square-root of the traded volume,  $\sigma_d/\sqrt{V_d}$ ) are *highly correlated* and do predict the amplitude of a putative crash induced by a given (large) sell order imbalance.

Since the latter measure is entirely based on readily available public information, our result is quite remarkable. It opens the path to a better understanding of crash mechanisms and possibly to early warning signs of market instabilities. However, while we claim that the amplitude of a potential crash can be anticipated, we are of course not able to predict when this crash will happen—if it happens at all. Still, our analysis motivates better dynamical risk evaluations (like value-at-risk), impact adjusted marked-to-market accounting [37] or liquidity-sensitive option valuation models. As a next step, a comprehensive study of the correlation between the realised crash probability and  $\sigma_d/\sqrt{V_d}$  on a wider universe of stocks—expanding the work of Ref. [32]—would be a highly valuable validation of the ideas discussed here.

## Acknowledgments

We thank A. Tilloy for his insights on the Bitcoin and for reading the manuscript; P. Baqué for reading the manuscript; and J. Bonart for useful discussions.

## Author Contributions

Conceived and designed the experiments: JD. Performed the experiments: JD. Analyzed the data: JD JPB. Wrote the paper: JD JPB.

## References

1. Shiller RJ. Sharing Nobel honors, and agreeing to disagree. *New York Times*. 2013; 26.
2. Taleb NN. *The black swan: The impact of the highly improbable fragility*. Random House; 2010.
3. Mackay C. *Extraordinary Popular Delusions and the Madness of Crowds*. Start Publishing LLC; 2012.
4. Kindleberger C, Aliber R. *Manias, Panics and Crashes: a History of Financial Crises*. Palgrave Macmillan; 2011.
5. Sornette D. *Why Stock Markets Crash: Critical Events in Complex Financial Systems*. Princeton University Press; 2009.
6. Reinhart C, Rogoff K. *This Time is Different: Eight Centuries of Financial Folly*. Princeton University Press; 2009.
7. Fair R. *Events that shook the market*. 2000;.
8. Joulin A, Lefevre A, Grunberg D, Bouchaud JP. Stock price jumps: news and volume play a minor role. *Arxiv*. 2008; <http://arxiv.org/abs/0803.1769>
9. Cornell B. What moves stock prices: Another look. *The Journal of Portfolio Management*. 2013; 39(3):32–38. doi: [10.3905/jpm.2013.39.3.032](https://doi.org/10.3905/jpm.2013.39.3.032)
10. Cutler D, Poterba J, Summers L. What moves stock prices? *The Journal of Portfolio Management*. 1989; 15(3):4–12. doi: [10.3905/jpm.1989.409212](https://doi.org/10.3905/jpm.1989.409212)
11. Smith V, Suchanek G, Williams A. Bubbles, crashes, and endogenous expectations in experimental spot asset markets. *Econometrica: Journal of the Econometric Society*. 1988; p. 1119–1151. doi: [10.2307/1911361](https://doi.org/10.2307/1911361)

12. Lillo F, Farmer JD. The key role of liquidity fluctuations in determining large price changes. *Fluctuation and Noise Letters*. 2005; 5(02):L209–L216. doi: [10.1142/S0219477505002574](https://doi.org/10.1142/S0219477505002574)
13. Hommes C, Sonnemans J, Tuinstra J, Van de Velden H. Coordination of expectations in asset pricing experiments. *Review of Financial Studies*. 2005; 18(3):955–980. doi: [10.1093/rfs/18h003](https://doi.org/10.1093/rfs/18h003)
14. Bouchaud JP. Crises and collective socio-economic phenomena: simple models and challenges. *Journal of Statistical Physics*. 2013; 151(3-4):567–606. doi: [10.1007/s10955-012-0687-3](https://doi.org/10.1007/s10955-012-0687-3)
15. Nakamoto S. Bitcoin: A peer-to-peer electronic cash system. Consulted. 2008; 1(2012):28.
16. Ali R, Barrdear J, Clews R, Southgate J. The economics of digital currencies. *Bank of England Quarterly Bulletin*. 2014; p. Q3.
17. Böhme R, Christin N, Edelman BG, Moore T. Bitcoin. *Journal of Economic Perspectives*, Forthcoming. 2014; p. 15–015.
18. Donier J, Bonart J, Mastromatteo I, Bouchaud JP. A fully consistent, minimal model for non-linear market impact. SSRN. 2014; [http://papers.ssrn.com/sol3/papers.cfm?abstract\\_id=2531917](http://papers.ssrn.com/sol3/papers.cfm?abstract_id=2531917)
19. Weber P, Rosenow B. Order book approach to price impact. *Quantitative Finance*. 2005; 5(4):357–364. doi: [10.1080/14697680500244411](https://doi.org/10.1080/14697680500244411)
20. Bouchaud JP, Kockelkoren J, Potters M. Random walks, liquidity molasses and critical response in financial markets. *Quantitative finance*. 2006; 6(02):115–123. doi: [10.1080/14697680500397623](https://doi.org/10.1080/14697680500397623)
21. Toth B, Lempérière Y, Deremble C, de Lataillade J, Kockelkoren J, Bouchaud JP. Anomalous price impact and the critical nature of liquidity in financial markets. *Phys Rev X*. 2011; 1:021006.
22. Mastromatteo I, Toth B, Bouchaud JP. Agent-based models for latent liquidity and concave price impact. *Physical Review E*. 2014; 89(4):042805. doi: [10.1103/PhysRevE.89.042805](https://doi.org/10.1103/PhysRevE.89.042805)
23. Mastromatteo I, Toth B, Bouchaud JP. Anomalous impact in reaction-diffusion models. *Physical Review Letters*. 2014; 113:268701. doi: [10.1103/PhysRevLett.113.268701](https://doi.org/10.1103/PhysRevLett.113.268701) PMID: [25615397](https://pubmed.ncbi.nlm.nih.gov/25615397/)
24. Wyart M, Bouchaud JP, Kockelkoren J, Potters M, M. Vettorazzo, M. Relation between Bid-Ask Spread, Impact and Volatility in Double Auction Markets *Quantitative Finance*, 8, 41–57 (2008).
25. Giardina I, Bouchaud JP. Bubbles, crashes and intermittency in agent based market models. *The European Physical Journal B-Condensed Matter and Complex Systems*. 2003; 31(3):421–437.
26. Sandås P. Adverse selection and competitive market making: Empirical evidence from a limit order market. *Review of Financial Studies*. 2001; 14(3):705–734. doi: [10.1093/rfs/14.3.705](https://doi.org/10.1093/rfs/14.3.705)
27. Donier, J, Bonart, J. A million metaorder analysis of market impact on the Bitcoin. SSRN. 2014; [http://papers.ssrn.com/sol3/papers.cfm?abstract\\_id=2536001](http://papers.ssrn.com/sol3/papers.cfm?abstract_id=2536001)
28. <http://www.barra.com/newsletter/nl168/mim4-168.asp>
29. Almgren R, Thum C, Hauptmann E, Li H. Direct estimation of equity market impact. *Risk*. 2005; 18:5752.
30. Moro E, Vicente J, Moyano L, Gerig A, Farmer JD, Vaglica G, et al. Market impact and trading profile of hidden orders in stock markets. *Physical Review E*. 2009; 80(6):066102. doi: [10.1103/PhysRevE.80.066102](https://doi.org/10.1103/PhysRevE.80.066102)
31. Bladon A, Moro E, Galla T. Agent-specific impact of single trades in financial markets. *Physical Review E*. 2012; 85(3):036103. doi: [10.1103/PhysRevE.85.036103](https://doi.org/10.1103/PhysRevE.85.036103)
32. Kyle AS, Obizhaeva AA. Large bets and stock market crashes. In: AFA 2013 San Diego Meetings Paper; 2012.
33. Bershova N, Rakhlin D. The non-linear market impact of large trades: Evidence from buy-side order flow. *Quantitative Finance*. 2013; 13(11):1759–1778. doi: [10.1080/14697688.2013.861076](https://doi.org/10.1080/14697688.2013.861076)
34. Gomes C, Waelbroeck H. Is market impact a measure of the information value of trades? Market response to liquidity vs. informed metaorders. *Quantitative Finance*. 2014;(ahead-of-print):1–21.
35. Brokmann X, Kockelkoren J, Bouchaud JP. Slow decay of impact in equity markets. SSRN. 2014; [http://papers.ssrn.com/sol3/papers.cfm?abstract\\_id=2471528](http://papers.ssrn.com/sol3/papers.cfm?abstract_id=2471528)
36. Farmer JD, Gerig A, Lillo F, Waelbroeck H. How efficiency shapes market impact. *Quantitative Finance*. 2013; 13(11):1743–1758. doi: [10.1080/14697688.2013.848464](https://doi.org/10.1080/14697688.2013.848464)
37. Caccioli F, Bouchaud J, Farmer D. Impact-adjusted valuation and the criticality of leverage. *Risk*. 2012;.
38. Garman M, Klass M. On the estimation of security price volatilities from historical data. *Journal of business*. 1980; p. 67–78. doi: [10.1086/296072](https://doi.org/10.1086/296072)
39. Amihud Y. Illiquidity and stock returns: cross-section and time-series effects. *Journal of financial markets*. 2002; 5(1):31–56. doi: [10.1016/S1386-4181\(01\)00024-6](https://doi.org/10.1016/S1386-4181(01)00024-6)