



HAL
open science

The “Wa’shah method”: an original laminar debitage from Hadramawt, Yemen

Rémy Crassard

► **To cite this version:**

Rémy Crassard. The “Wa’shah method”: an original laminar debitage from Hadramawt, Yemen. Proceedings of the Seminar for Arabian Studies, 2008, 38, pp.3-14. hal-01828444

HAL Id: hal-01828444

<https://hal.science/hal-01828444>

Submitted on 4 Jul 2018

HAL is a multi-disciplinary open access archive for the deposit and dissemination of scientific research documents, whether they are published or not. The documents may come from teaching and research institutions in France or abroad, or from public or private research centers.

L’archive ouverte pluridisciplinaire **HAL**, est destinée au dépôt et à la diffusion de documents scientifiques de niveau recherche, publiés ou non, émanant des établissements d’enseignement et de recherche français ou étrangers, des laboratoires publics ou privés.



PROCEEDINGS
OF THE
SEMINAR FOR
ARABIAN STUDIES



VOLUME 38

2008



Archaeopress

PROCEEDINGS
OF THE
SEMINAR FOR ARABIAN STUDIES

VOLUME 38
2008

Papers from the forty-first meeting of the
Seminar for Arabian Studies
held in London, 19-21 July 2007

SEMINAR FOR ARABIAN STUDIES

ARCHAEOPRESS
OXFORD

Orders for copies of this volume of the *Proceedings* and of all back numbers should be sent to
Archaeopress, Gordon House, 276 Banbury Road, Oxford OX2 7ED, UK.

Tel/Fax +44-(0)1865-311914.

e-mail bar@archaeopress.com

<http://www.archaeopress.com>

For the availability of back issues see the Seminar's web site: www.arabianseminar.org.uk

Steering Committee of the Seminar and Editorial Committee of the *Proceedings*

Dr. R. Carter (Chairman)

Prof. A. Avanzini

Dr. M. Beech

Dr. N. Durrani

Dr. R. Eichmann

Prof. C. Holes

Dr. R.G. Hoyland

Dr. D. Kennet

Mr. M.C.A. Macdonald

Dr. A. MacMahon (Secretary)

Prof. K. Al-Muaikel

Dr. V. Porter

Prof. D. Potts

Prof. C. Robin

Dr. St.J. Simpson (Joint Editor-in-Chief)

Mr. A. Thompson (Treasurer)

Prof. J. Watson

Dr. L. Weeks (Joint Editor-in-Chief)

Seminar for Arabian Studies

c/o the Department of the Middle East, The British Museum

London, WC1B 3DG, United Kingdom

e-mail seminar.arab@durham.ac.uk

Opinions expressed in papers published in the *Proceedings* are those of the authors and are not necessarily shared by the Editorial Committee.

Typesetting, Layout and Production: David Milson

The *Proceedings* is produced in the Times Semitic font, which was designed by Paul Bibire for the Seminar for Arabian Studies.

© 2008 Archaeopress, Oxford, UK.

All rights reserved. No part of this publication may be reproduced, stored in a retrieval system, or transmitted, in any form or by any means, electronic, mechanical, photocopying, recording, or otherwise, without the prior permission of the publisher.

ISSN 0308-8421

ISBN 0-9539923-4-9

The “Wa^cshah method”: an original laminar debitage from Ḥaḍramawt, Yemen

RÉMY CRASSARD

Summary

The discovery of several surface sites revealed the existence of an original type of lithic industry, unknown until now in Yemen, and in the rest of South Arabia. This type of debitage, called the “Wa^cshah method” is a method of laminar debitage (blade production). We announced this discovery in a former PSAS paper (Crassard & Bodu 2004), and here we develop the definition of this type of debitage in the light of recent analyses.

Keywords: lithic technology, laminar debitage, Wādī Wa^cshah, Ḥaḍramawt, Yemen

General definition and context of discovery

During surveys made by two archaeological projects, one in Wādī Wa^cshah (French Archaeological Mission in Jawf-Ḥaḍramawt — HDOR Project, directed by M. Mouton and A. Benoist) and another in Wādī Ṣanā (Roots of Agriculture in Southern Arabia — RASA Project, directed by J. McCorriston, R. Oches, and A. bin Aqil), several surface sites were discovered with a new type of laminar debitage (blade production) made on local flint or chert. The discovery of a debitage modality of preferential blades constitutes a rare example of predetermined laminar debitage in the Arabian Peninsula. Sites with laminar debitage on naviform cores are known in Qatar but they are due to technical import from Levantine human groups (Inizan 1988). This type of debitage has never been found in any region of Yemen.

The debitage identified in Wādī Wa^cshah seems to be particular to South Arabia, without obvious contribution from abroad, either from East Africa, the Levant, or other areas of the Arabian Peninsula. We will name this type of debitage the “Wa^cshah method”. The Wa^cshah method allows the production of pointed blades by a unidirectional laminar debitage (Fig. 1).

At least ten sites in Wādī Wa^cshah and two (possibly three) sites in Wādī Ṣanā revealed a Wa^cshah industry with homogeneous characteristics (Fig. 2). In Wādī Wa^cshah, sites are especially concentrated in a 1 km perimeter, east of site HDOR 538. These geographical data, however, indicate only the surveyed zone, while this corpus could,



FIGURE 1. *An example of a Wa^cshah core (from Wādī Wa^cshah).*

most probably, be increased if the survey area was widened. Wādī Ṣanā also delivered some Wa^cshah debitage sites, always at the tops of the plateaus, but from surface sites, sometimes mixed with Levallois industries on axial cores with a flat debitage surface.

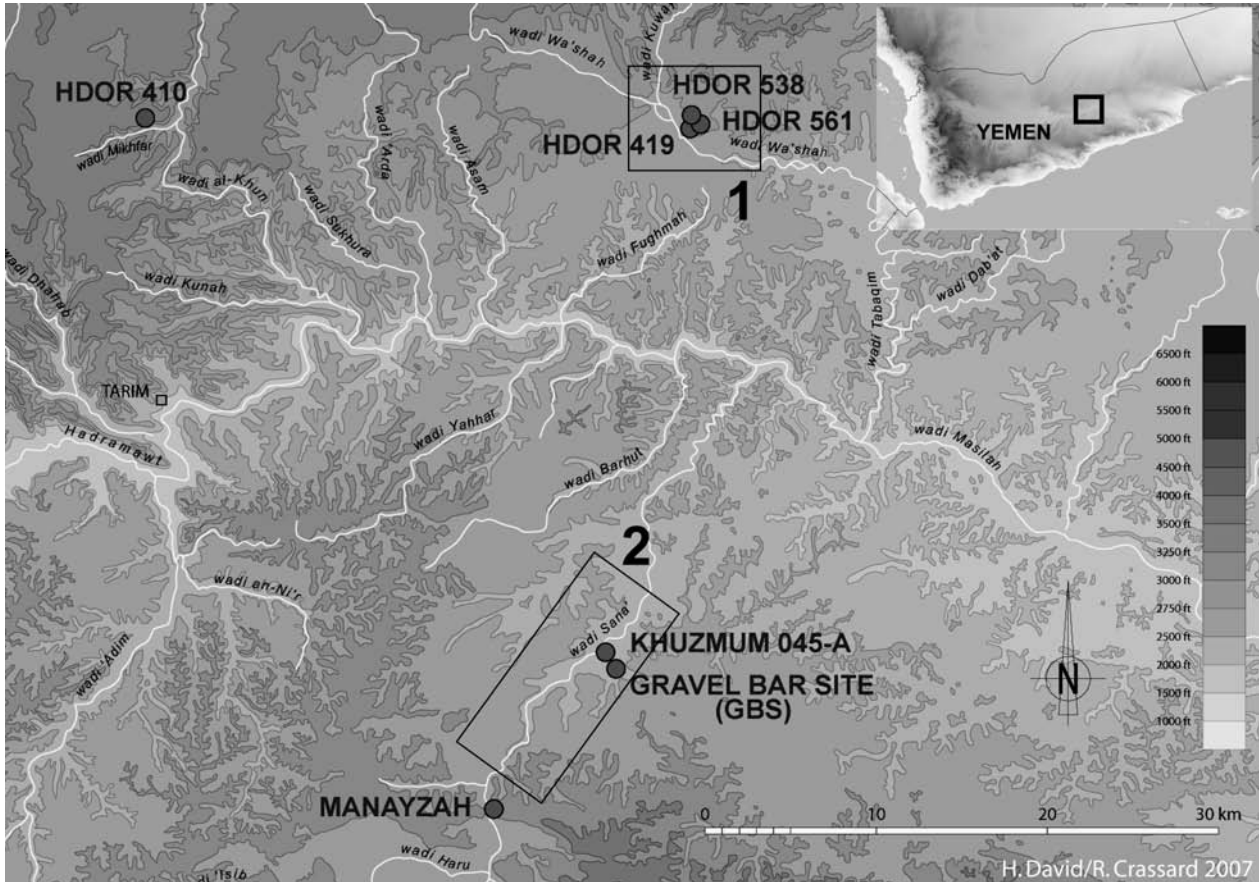


FIGURE 2. Places of research in Ḥaḍramawt, with the names of major Early/Mid-Holocene sites: 1. Wādī Wa'shah region (French Archaeological Mission in Jawf-Ḥaḍramawt); 2. Wādī Ṣanā region (RASA Project).

The Wa'shah method

We describe here a “typical” technical scheme of Wa'shah debitage, by describing the various phases and the knapper's behaviour according to what we could observe on the archaeological artefacts. We suppose that this method of debitage has a strong chronological value, even if our understanding is still at a preliminary stage, considering the relatively low number of discovered sites (Figs 3 and 4).

phase 1

The raw material is chosen from strictly local sources, and favours naturally globular flint blocks, but the use of thick tabular flat blocks is attested. From a striking platform on a non-cortical natural surface, or after the creation of a striking platform by a transversal flake removal if a natural surface is not available, a first cortical blade

is extracted (Fig. 5/1). The Wa'shah method is carried out from a single striking platform, minimally prepared by a light abrasion of the impact zone. Blade extraction is thus only done in a unidirectional way, from a semi-turning volumetric exploitation (and not facial) on a narrow side of the core (Fig. 6).

phase 2

A first lateral blade is extracted, often semi-cortical, with a preference for plunging (*ourepassées*) blades. A second lateral blade, at the other side of the central debitage zone is obtained with the same aim of making a plunged removal (Fig. 5/2–5). The creation of guiding arrises is the goal of these preparation blades. Arrises will then be followed by the knapping shock wave. They form a strong dihedral angle on the core's surface. Therefore, the negatives' convergence of the two previous blades makes the third blank pointed.

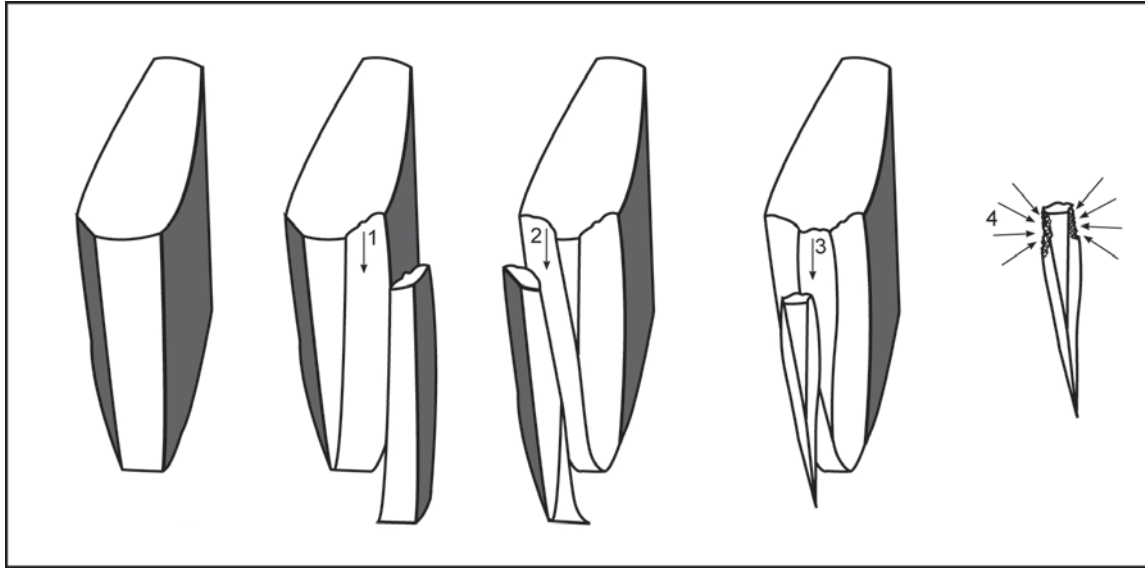


FIGURE 3. A unidirectional method of predetermined pointed blades, called the “Wa’shah method”; a first stage aims to create an acute-angled striking platform, a second one (arrows 1 and 2) prepares the pointed blade extraction (3) which comes during a third stage, before being retouched in its proximal part (4).

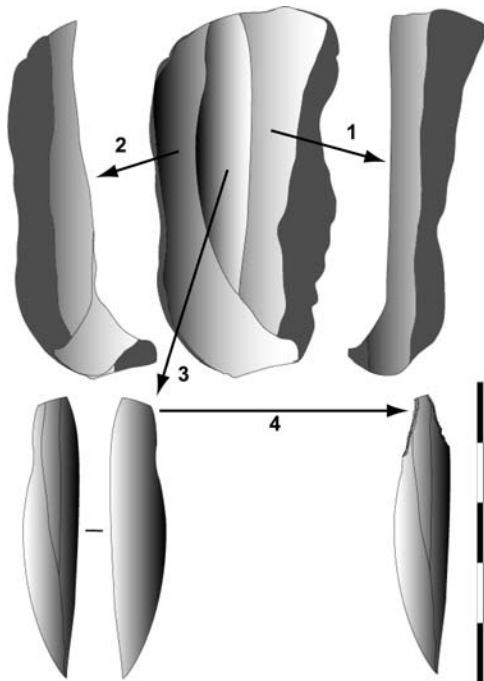


FIGURE 4. A unidirectional method of predetermined pointed blades, called the “Wa’shah method”; a theoretical reconstruction from an archaeological core.

phase 3

The pointed blade is extracted then retouched in its proximal part on both sides by short, semi-abrupt to abrupt and direct, sometimes bifacial removals. The blade blank thus becomes a tool that we propose to call the “Wa’shah point” (see Fig. 8; Crassard & Bodu 2004: 77).

Some possible following phases are the repetition of phases 2 and 3, if the knapper needs to do so. In fact, few archaeological cores have been strongly exploited. It reveals production of a standardized blank, but not necessarily expecting mass production of these pointed blades, while cores are not exploited to their maximum resources.

Non-pointed blades, sometimes very well made, are abandoned raw (non-retouched). They are called “second intention” blades (Fig. 7). Many of these blades are present on Wa’shah debitage sites. A detailed analysis made on characteristic pieces indicates the intended production of pointed blades, which additionally creates a huge amount of laminar waste pieces (debris). The most distinctive are the resharpening (or rejuvenation) removals that are used to restart a debitage sequence. These removals attest to recurrent debitage production. Some of them clearly show the negatives of previous Wa’shah point blanks (Fig. 5/5). Because the second intention blades are

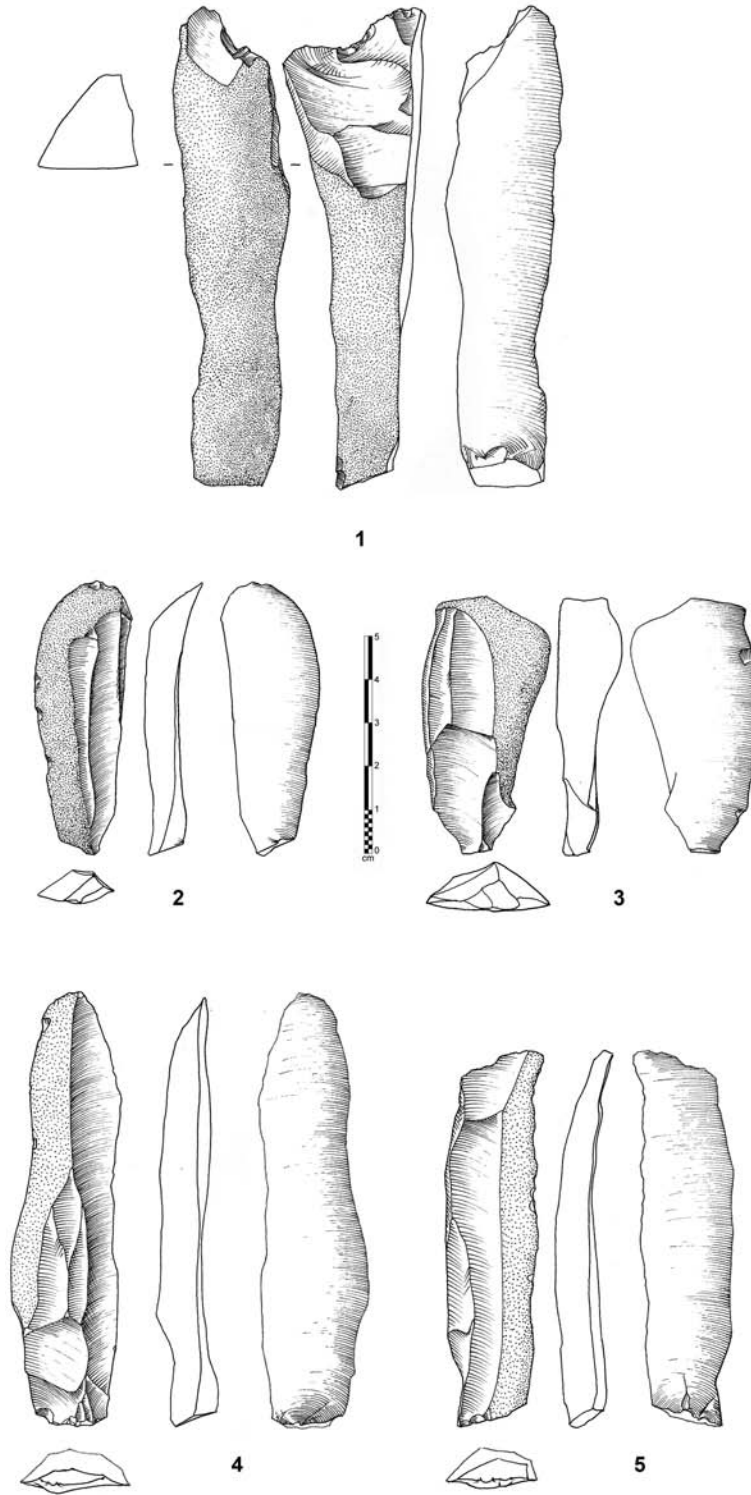


FIGURE 5. *Wa'shah* debitage: 1. cortical blade (HDOR 571 site). 2–5. semi-cortical blades (HDOR 538 site). (Drawings by J. Espagne).

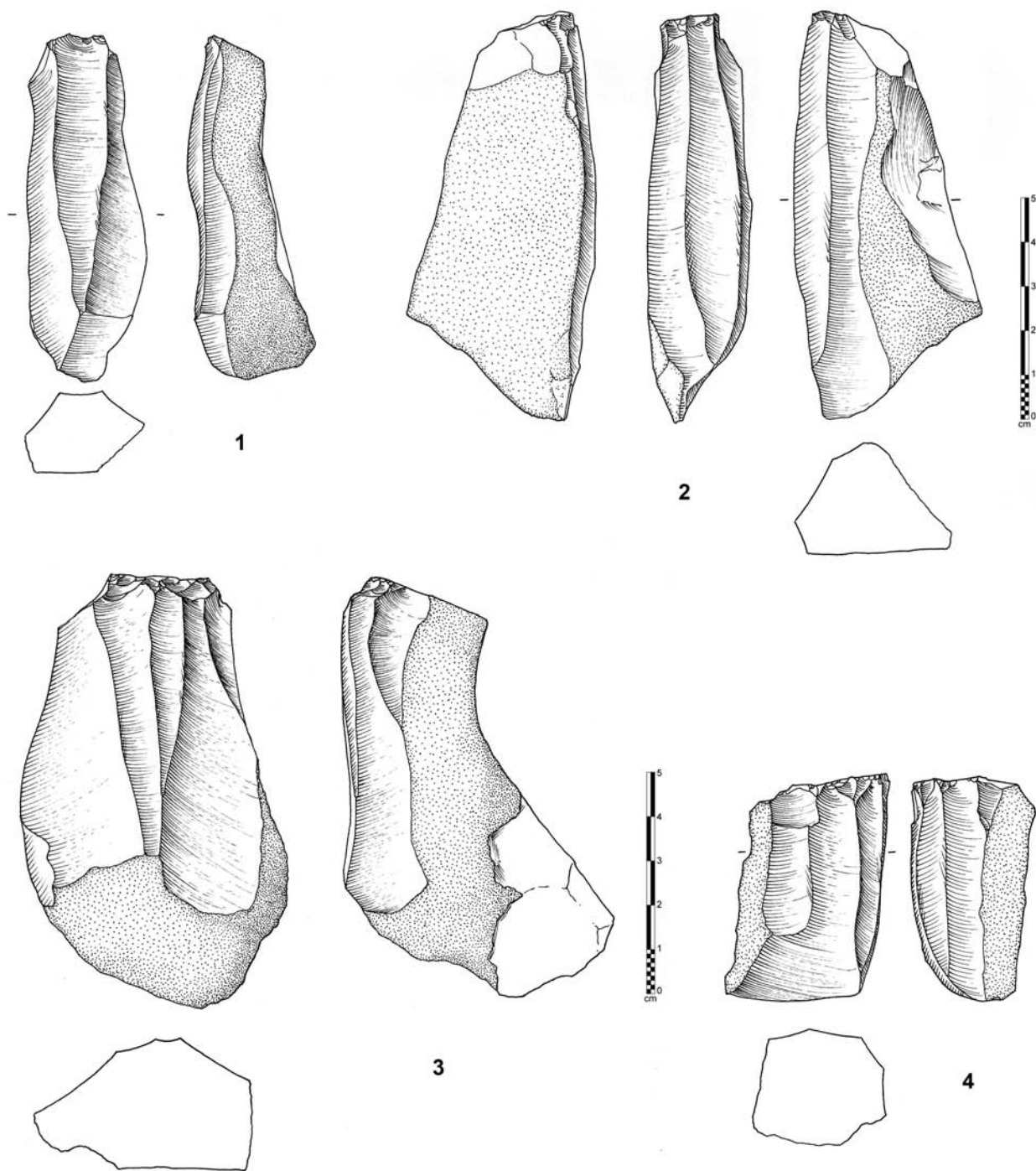


FIGURE 6. Wa^sshah cores: 1. from HDOR 538. 2. from HDOR 571. 3. from HDOR 567. 4. from HDOR 565. (Drawings by J. Espagne).

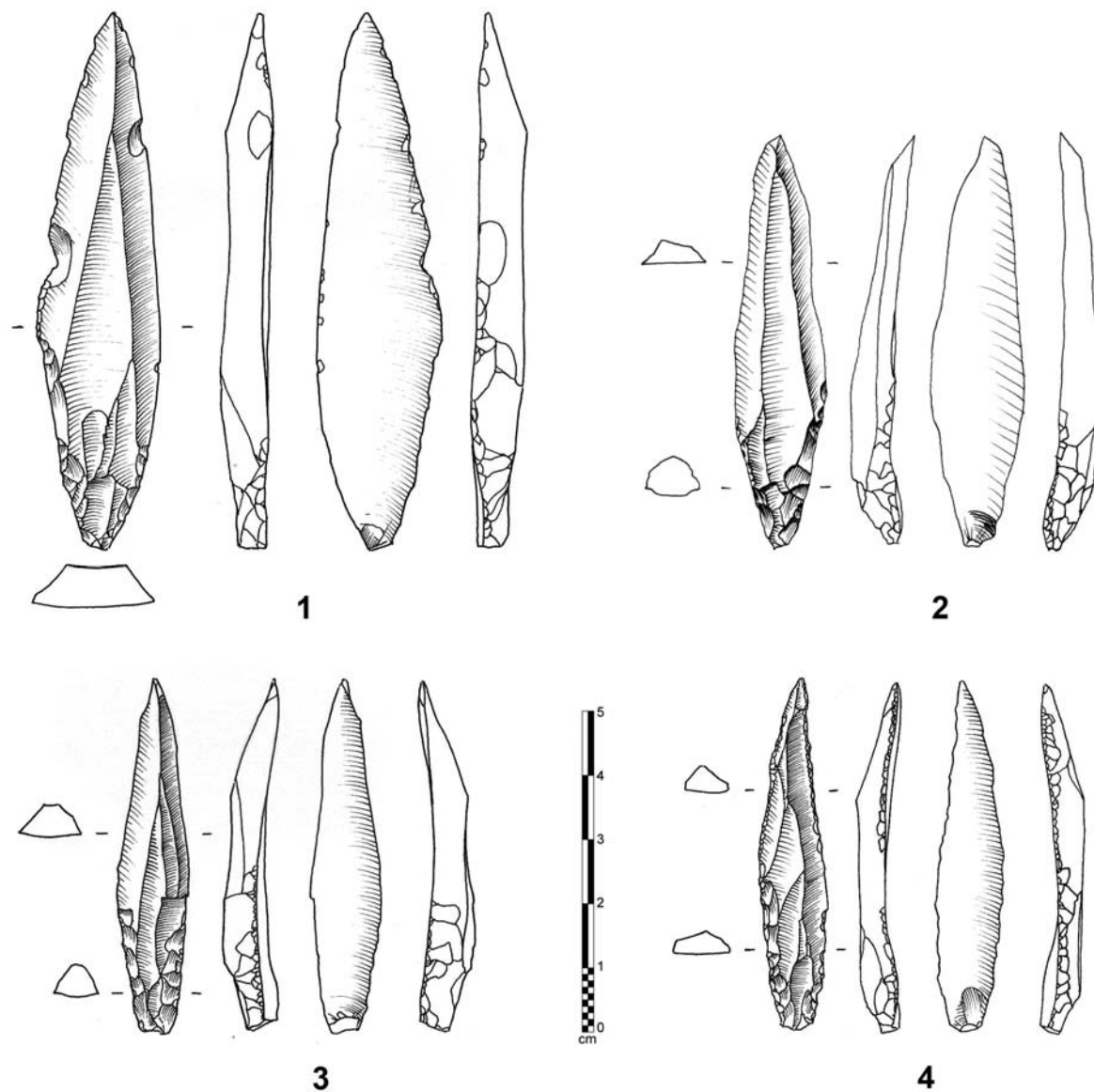


FIGURE 7. *Wa^çshah* debitage, “second intention” blades: 1–4. from HDOR 565. 5–6. from HDOR 538. (Drawings by J. Espagne).

found in large quantities, considering the near-absence of the pointed blades in debitage areas, the production of non-pointed blades does not seem to be deliberate.

The *Wa^çshah* points

Discoveries

Six *Wa^çshah* points have been found (Fig. 8), including two in a totally isolated context. Although the discove-

red points are scarce in number it seems that they were produced in large quantities, judging from the abundance of *Wa^çshah* cores. In fact, 201 blade cores, essentially resulting from *Wa^çshah* debitage, were discovered on the HDOR 538 site, where systematic surface collecting was undertaken. The associated products were also collected in their totality: cortical and semi-cortical blades, blades from various stages of debitage etc., with a total of 1128 pieces. Debitage is exclusively unidirectional. Neither crest preparation, nor convexity reinstatement by opposed

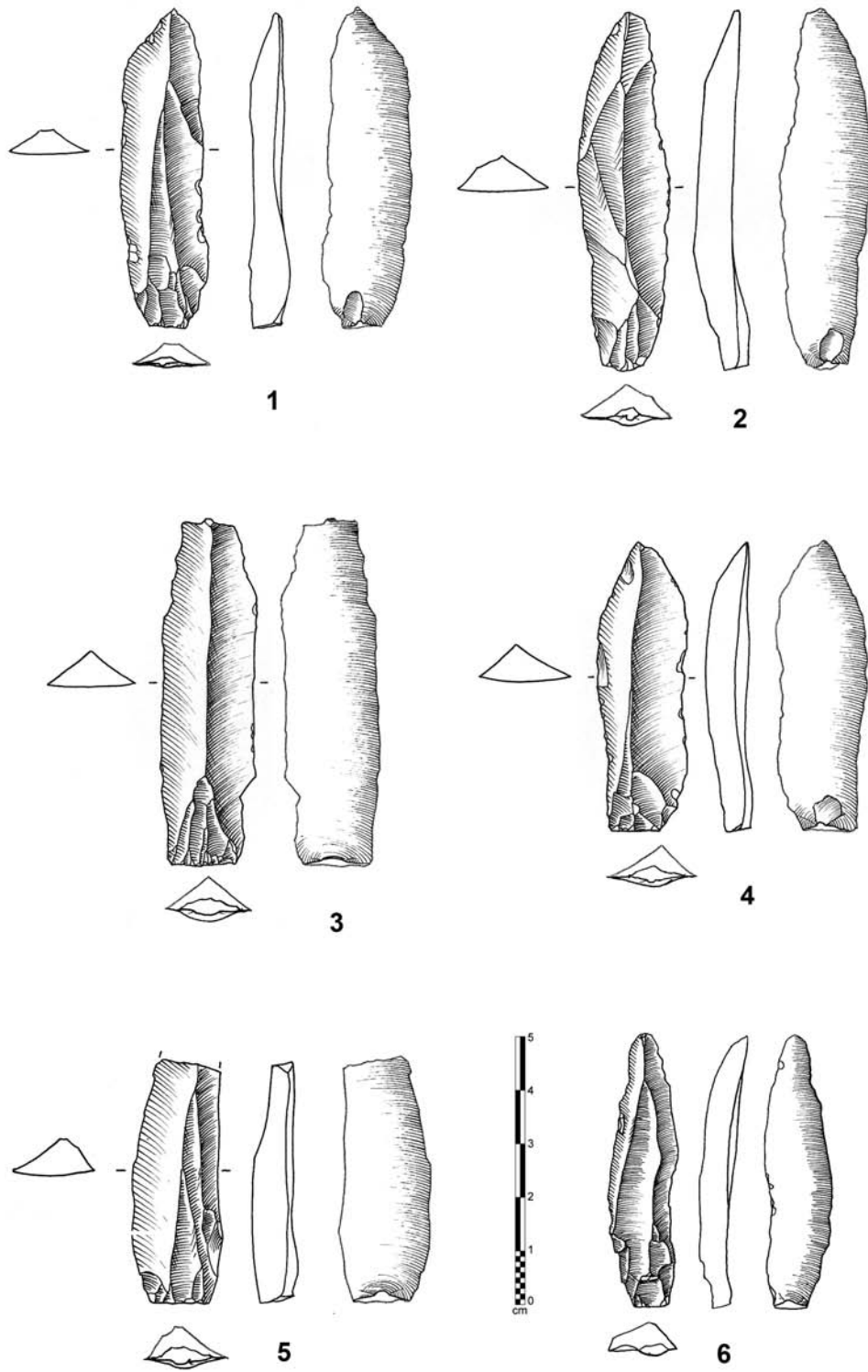


FIGURE 8. *Wa'ashah* points from HDOR 538.
(Drawings by J. Espagne [1, 3 and 4], and R. Crassard [2]).

Point # / Site Condition	Length	Max. width	Max. thickness
28 / Entire HDOR 538 (-24)	51	11	7
29 / Entire HDOR 538 (-24)	84	20	8
30 / Base-medial Top of hill upon HDOR 566	54	16	7
31 / Entire HDOR 538 (36B)	55	13	5
42 / Entire HDOR 538 (2C)	64	14	7
43 / Entire Hill upon HDOR 538	58	16	7
Mean	61	15	7

TABLE 1. *Wa^ʿshah points dimensions (in millimetres).*

Site	Length	Width
HDOR 538 49D	51	17
HDOR 571	79	12
HDOR 538 43A	49	16
HDOR 538 47D	64	12
HDOR 561 Sd4niv3	44	15
HDOR 571	67	12
HDOR 565	45	7
HDOR 567	50	8
RASA 2004-166-1	63	17
RASA 2004-166-1	38	9
Mean	55	13

TABLE 2. *Dimensions observed on negatives of final pointed blades on Wa^ʿshah cores.*

or orthogonal removals has been observed. Pointed blades are only obtained by preparing adequate convexities thanks to *débordant* and plunging blades, during a semi-turning debitage modality centred on the extraction zone of the predefined final blade.

Dimensions

The size of the pointed blades is variable. The dimensions observed on the recovered Wa^ʿshah points are from 51 to 84 mm long (Table 1). Measures of the final pointed blades' negatives on the laminar cores augment the morpho-metrical corpus (Table 2), at least for the pieces'

length and width, even if one cannot confirm that all of the final pointed blades were blanks for Wa^ʿshah points. According to the observation of eight cores, the final product has a mean length of 56 mm and a mean width of 12 mm. It is then possible to propose a “silhouette-type” (Fig. 9).

Comparisons

Thirteen points on laminar blanks are displayed in the regional museum of Say^ʿūn (Crassard 2007, ii: fig. A-275). Their provenance is not known with precision, as it is only known that they come from the northern region of the Ḥaḍramawt plateaus. Two other similar pieces come from the al-^ʿAbr area, west of Ḥaḍramawt.

In addition, H. Amirkhanov has published a drawing of a typical Wa^ʿshah point (1997: 109–111, fig. 39/5). It comes from Wādī Ḥabak in Mahrah governorate, close to the Ḥabarūt site, on the border with Oman. The author makes only a summary typological description of it. It is 6.1 cm long, 1.1 cm wide, and retouched along 2 cm of the base on both edges. Amirkhanov considers this type of point not very important in the general lithic tools corpus found in the area. He adds that, because of the simplicity with which it was retouched, this point is a unique case in the sets of points on flakes. He finally interprets it as an arrowhead. No mention of a laminar predetermination is proposed, or any particular technical scheme which would allow placing this type of point in a broader technological context. The observation of the lithic drawing leads us to conclude the presence of the Wa^ʿshah method at least until the eastern limit of the Mahrah region. It is until now the only known example of a typical Wa^ʿshah point coming from outside the Wādī Wa^ʿshah area.

Discussion: chronology and perspectives

A Pleistocene date?

The originality of the Wa^ʿshah method raises the question of its place within the technical traditions of Arabia. It indeed represents an example, unique in the Arabian Peninsula, of a sophisticated and predetermined laminar debitage, except for one imported into Qatar (Inizan 1988). Because of this peculiarity, this debitage type does not find any regional technical pattern of comparison. Moreover, the Wa^ʿshah method has never been discovered in a context delivering an unquestionable date.

Two factors point to Pleistocene characteristics: (i) this method is very close in its debitage conception to

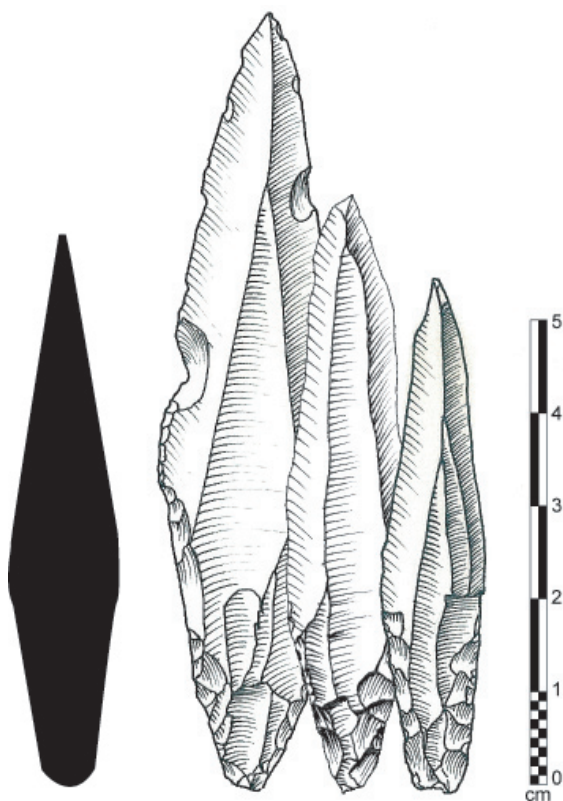


FIGURE 9. *The Wa^ʿshah point; the silhouette-type (shaded) is deduced from the mean dimensions; the technical drawings represent one exceptional example of a long point and two others with more common dimensions.*

the production of so-called “classical” Levallois points, characterized by the preparation of unidirectional lateral convergent removals; and (ii) the use of a laminar volumetric structure refers directly to an Upper Palaeolithic-like conceptualization known in Europe and the Levant. However, no dated Upper Palaeolithic site has been discovered up to now in Yemen, whereas Levallois industries from Ḥaḍramawt are quite clearly associated with the Pleistocene (Crassard, forthcoming).

Seeing in the Wa^ʿshah type of laminar debitage a technical manifestation datable to an Upper Palaeolithic phase (or even simply to the Pleistocene) is, however, premature: it is difficult to give a chronological assignation to this technique alone. Indeed, the laminar concept, and its innumerable variants throughout the world, is neither characteristic of a given period nor of an exclusive geographical area.

A Holocene date?

The greatest number of artefacts with Wa^ʿshah debitage indications was discovered on the surface site HDOR 538. Numerous foliate bifacial pieces and Holocene arrowheads were discovered there, with Wa^ʿshah cores and blades. A detailed study of the site revealed, by a spatial repartition analysis and the observation of the patinas (Crassard 2007: 171–186), that these two types of industries (bifacial and laminar) were certainly not synchronous.

Moreover, the discovery of a Wa^ʿshah core in one of the oldest layers of HDOR 561 (2007: 187–193) would attest contemporaneity or anteriority of the Wa^ʿshah method with some of the products typical of the Early/Mid-Holocene (bifacial shaping and pressure technique). The lack of data on the exact nature of the sedimentary deposition on this site prevents, however, reconstruction of a precise chronological frame. Indeed, HDOR 561’s deposits most probably underwent significant erosion because of the flows coming from the plateau and gully erosion resulting from it. A Holocene dating is however very probable, since one date has been obtained on terrestrial shell. This date is 9045 ± 54 BP (8294 – 8239 cal BC [1] — laboratory ref. AA64371), but calibration is uncertain, due to the sampled material. A preliminary recalibration is nevertheless estimated at around 7300–6800 BC (2007: 191–192).

A Holocene date for the Wa^ʿshah method is partly confirmed by the presence in layer 6 in HDOR 419 of a blade, which could be a laminar waste of a Wa^ʿshah debitage sequence (Crassard & Bodu 2004: fig. 5/10). This layer has not been absolutely dated, but a layer just above, layer 5, gave radiocarbon dates between 7272 ± 120 BP and 6931 ± 48 BP, i.e. between 6242 and 5743 cal BC [1]. (1) A Holocene dating of the Wa^ʿshah method thus seems more probable than a Pleistocene one, but must still be viewed with caution.

The use of indirect percussion? A technical and chronological hypothesis that remains to be tested

The observation of butts and percussion bulbs on certain pointed or not pointed blades evokes a possible use of indirect percussion, i.e. using a punch made of vegetal or animal material between striking platform and hammerstone.

Butts are most of the time plain, canted, and with a light abrasion, and present a rather acute angle, supporting impact with punch. The point of impact is often relatively

far away from the core's edge and bulb scar is common, whereas the bulb's negative is well marked. These peculiarities are not exclusive to indirect percussion and can be also associated with hard percussion.

The standardization of known points (and of the supposed points from negatives on cores) however reinforces the assumption of indirect percussion use. Experimental studies to come will be devoted to the observation and comparison of the marks with archaeological pieces. If debitage by indirect percussion is confirmed, then the Wa^cshah debitage can be assigned a Holocene date, use of this technique not being known during the Pleistocene anywhere in the world.

Conclusions

The frequent occurrence of the technical scheme found on many cores throughout the studied micro-region in Wādī Wa^cshah, as well as the standardization of the points, underline the predetermination of the process and comprise a strong technical marker. Still little documented, the Wa^cshah method is only clearly evident in eastern Ḥaḍramawt (Wādī Wa^cshah and Wādī Ṣanā).

Wa^cshah laminar debitage finds its originality in the apparent simplicity of execution and in the very exclusive search for a pointed blank type. The technical scheme, however, suggests an advanced control of flint knapping. It is also remarkable by its presence in Arabia, as Arabian assemblages very seldom reveal laminar industries. Indeed, for a long time it was thought that there were no laminar industries in the Peninsula apart from those of external origin, as found in Qatar. It is significant that we now have knowledge of the Wa^cshah technical scheme, but its precise chronological frame remains unclear. Many questions around the Wa^cshah method thus remain open. At all events, the description of this method allows the application of comparative criteria to future discoveries.

Acknowledgements

Archaeological operations were supported and financed

by two projects: the RASA Project and the French Archaeological Mission in Jawf-Ḥaḍramawt. I would like to thank their directors: Joy McCorriston (Ohio State University, USA), Erich Oches (University of South Florida, USA), ^cAbd al-^cAziz bin ^cAqil (GOAM, Yemen) for RASA; and Michel Mouton (CNRS, Nanterre), Frank Braemer (CNRS, Valbonne), Anne Benoist (CNRS, Lyon) for the French Mission. I also gratefully acknowledge the co-operation of the Republic of Yemen's General Organisation for Antiquities and Museums (GOAM): ^cAbd-Allah Ba-Wazir (President), ^cAbd al-Rahman al-Saqaf (Ḥaḍramawt GOAM branch director), and Hussein al-Aydarūs (GOAM, Say^oūn). This work would not have proceeded without the important implication on the field and constant support of Pierre Bodu (CNRS, Nanterre). I thank Jean-François Saliège (CNRS, Paris) for having prepared samples from HDOR 419 for radiocarbon dating made by the University of Arizona AMS Facility. I also thank Julien Espagne for his drawings and advice and Marie-Louise Inizan (CNRS, Nanterre) for her comments and support. I thank also Michael Haslam (LCHES) for his kind rereading and comments.

This paper was written during a post-doctoral fellowship at the Leverhulme Centre for Human Evolutionary Studies (LCHES) directed by Prof. Robert Foley, on the invitation of Dr Michael Petraglia. I would like to thank them and the rest of the research and administrative staff for their warm welcome. Finally, I thank the Fondation Fyssen for financing my stay in Cambridge.

Notes

- ¹ All dates were obtained by the University of Arizona AMS Facility on samples preliminarily prepared by J-F. Saliège (CNRS, Paris); see Crassard 2007: 194–202. Six dates were obtained from layer 5 and are listed below (Table 3).

Designation	Sample	$\delta^{13}\text{C}$	Lab. ref.	age ^{14}C BP	Calib. Age 1 σ BC
HDOR 419 A13 Niv 5	Charcoal	-25,6	AA64360	6931 \pm 48	5872- 5743
HDOR 419 A13 Niv 5	Charcoal	-23,4	AA64359	7017 \pm 52	5982- 5845
HDOR 419 A13 Niv 5	Charcoal	-25,2	AA64362	7042 \pm 53	5990- 5844
HDOR 419 A14 Niv 5	Charcoal	-25,70	AA64364	7086 \pm 50	6016- 5910
HDOR 419 A13 Niv 5	Charcoal	-22,12	AA64363	7169 \pm 52	6071- 5995
HDOR 419 A13 Niv 5	Charcoal	-25,38	AA64361	7270 \pm 120	6242- 6014

TABLE 3. Radiocarbon dates from site HDOR 419.

References

- Amirkhanov H.
1997. *The Neolithic and Postneolithic of the Hadramaut and Mahra*. Moscow: Scientific World. [In Russian].
- Crassard R.
2007. *Apport de la technologie lithique à la définition de la préhistoire du Ḥaḍramawt, dans le contexte du Yémen et de l'Arabie du Sud*. (2 volumes). PhD dissertation, Paris 1 Panthéon-Sorbonne. [Unpublished].
- (forthcoming). Middle Paleolithic in Arabia: the view from Ḥaḍramawt region, Yemen. In Petraglia M.D. & Rose J. (eds), *Footprints in the Sand: Tracking the Evolution and History of Human Populations in Arabia*. New York: Springer Press.
- Crassard R. & Bodu P.
2004. Préhistoire du Ḥaḍramawt (Yémen): nouvelles perspectives. *Proceedings of the Seminar for Arabian Studies* 34: 67–84.
- Inizan M-L.
1988. *Préhistoire à Qatar*. ii. Paris: Editions Recherche sur les Civilisations.

Author's address

Dr Rémy Crassard, Leverhulme Centre for Human Evolutionary Studies, University of Cambridge, The Henry Wellcome Building, Fitzwilliam Street, Cambridge, CB2 1QH, UK.

e-mail rc461@cam.ac.uk, rcrassard@prehistoryyemen.com, archeoremy@aol.com