



**HAL**  
open science

## Close to the bone object Microscopy and imaging Department - MAE

Alexandra Legrand-Pineau, Isabelle Sidéra, Christophe Petit

► **To cite this version:**

Alexandra Legrand-Pineau, Isabelle Sidéra, Christophe Petit. Close to the bone object Microscopy and imaging Department - MAE. *Frontiers in Heritage Science*, Feb 2019, Paris, France. hal-02436771

**HAL Id: hal-02436771**

**<https://hal.science/hal-02436771>**

Submitted on 13 Jan 2020

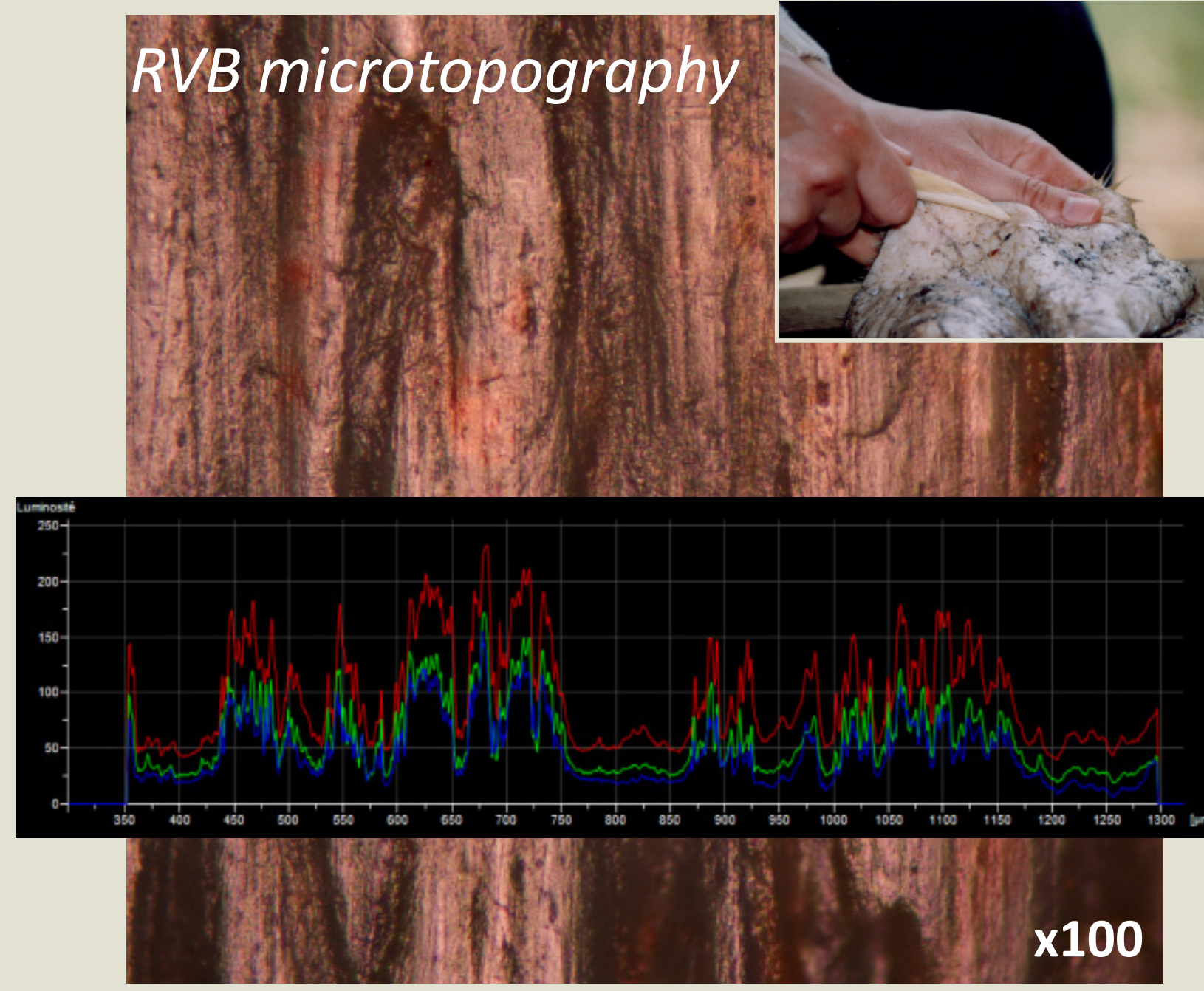
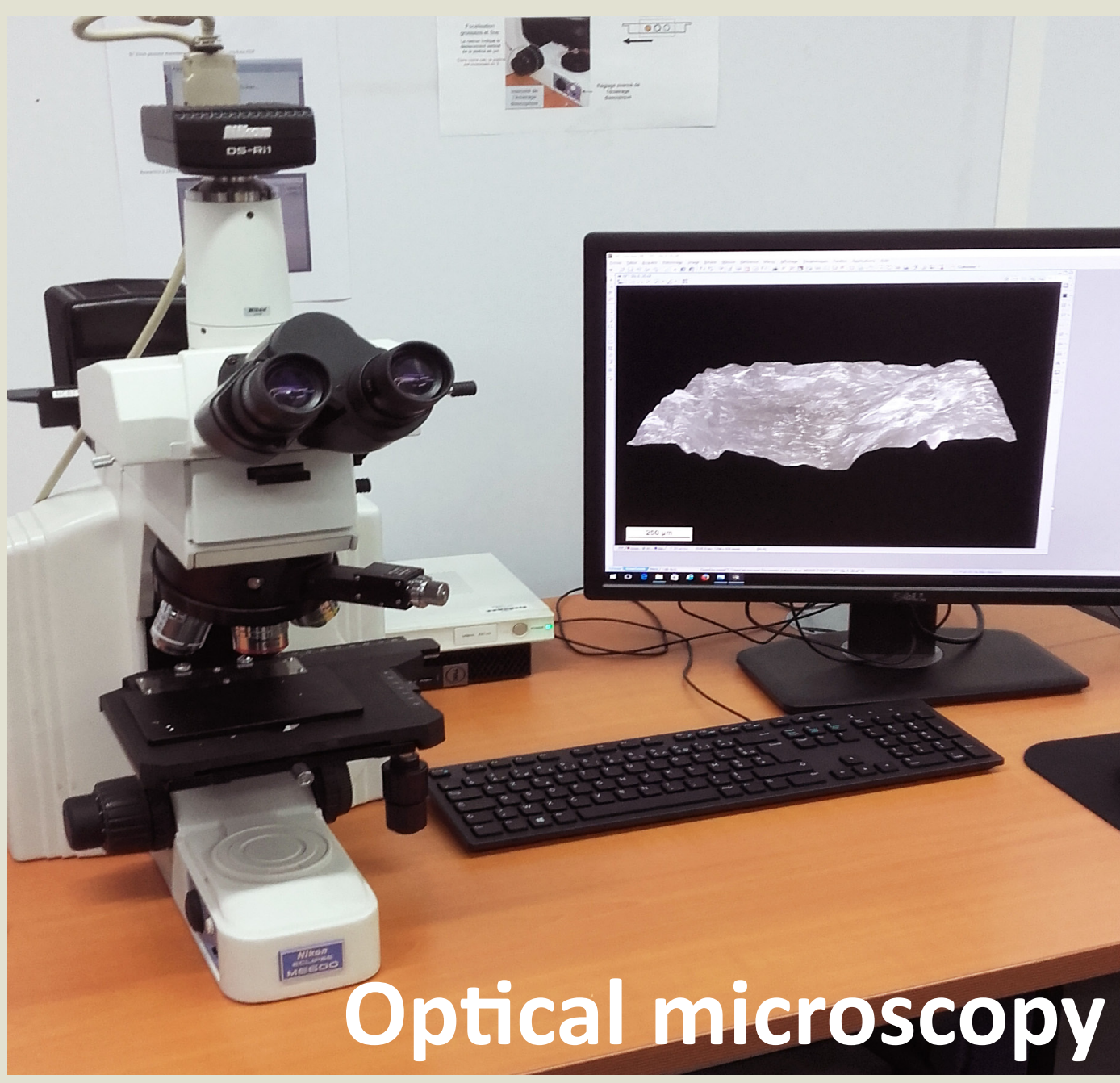
**HAL** is a multi-disciplinary open access archive for the deposit and dissemination of scientific research documents, whether they are published or not. The documents may come from teaching and research institutions in France or abroad, or from public or private research centers.

L'archive ouverte pluridisciplinaire **HAL**, est destinée au dépôt et à la diffusion de documents scientifiques de niveau recherche, publiés ou non, émanant des établissements d'enseignement et de recherche français ou étrangers, des laboratoires publics ou privés.

# Close to the bone object

## Microscopy and imaging Department - MAE

### Imaging & quantitative methods for use-wear

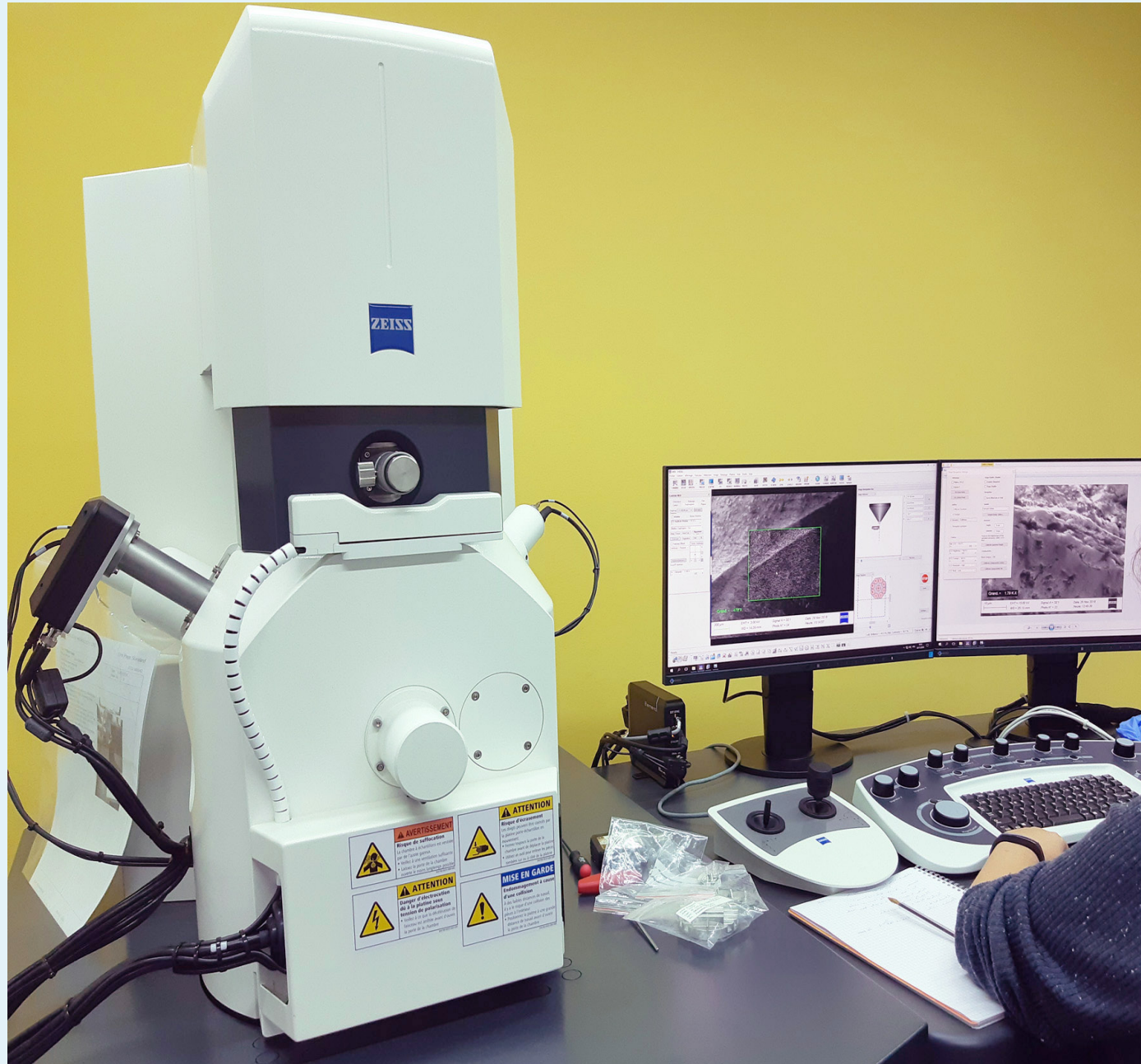


Bone tools volume and surface alterations characterized by optical and SEM microscopy, automation, measurement and imaging

Panoramic view: 4 pictures

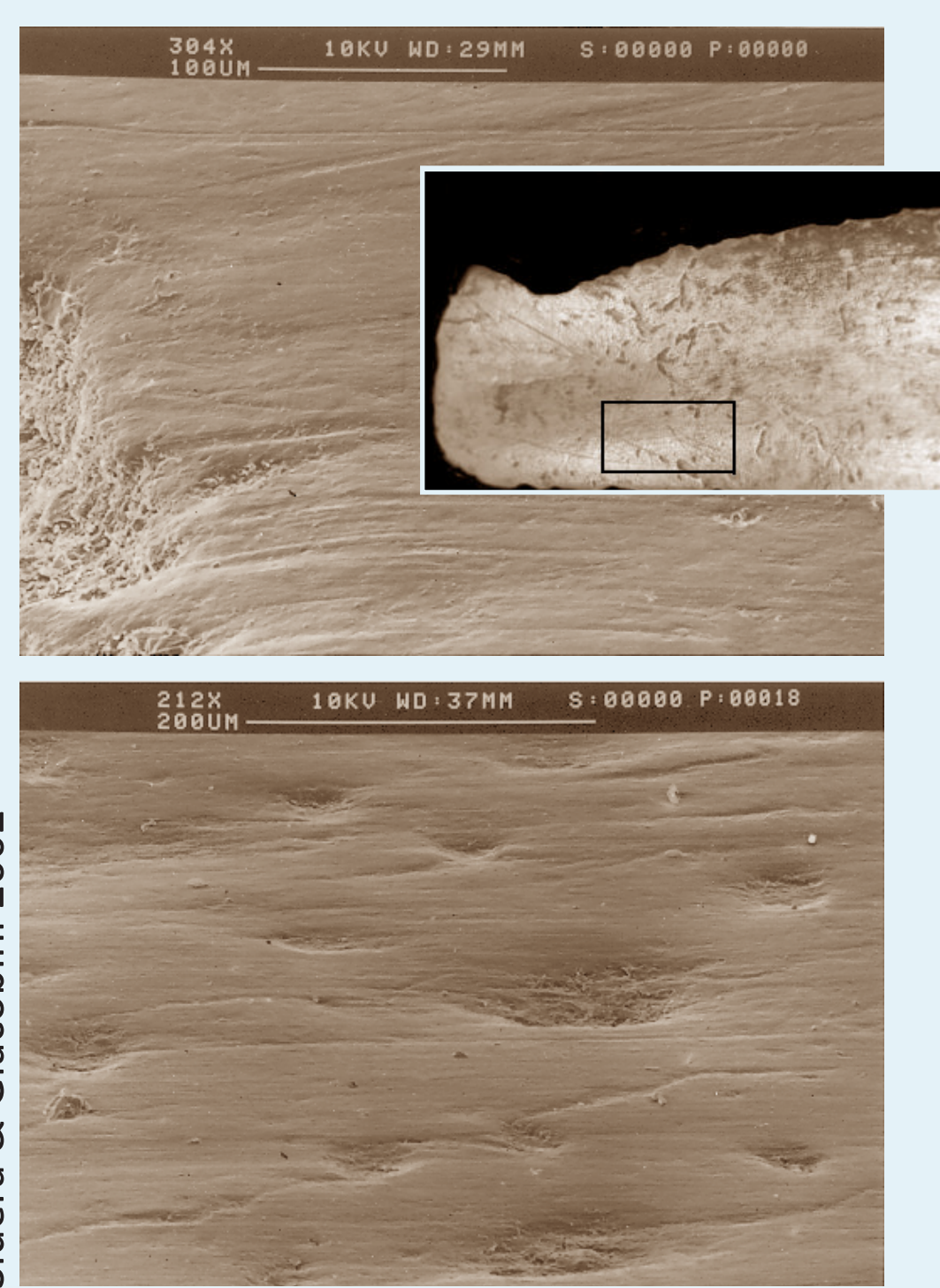


### Scanning Electron Microscopy

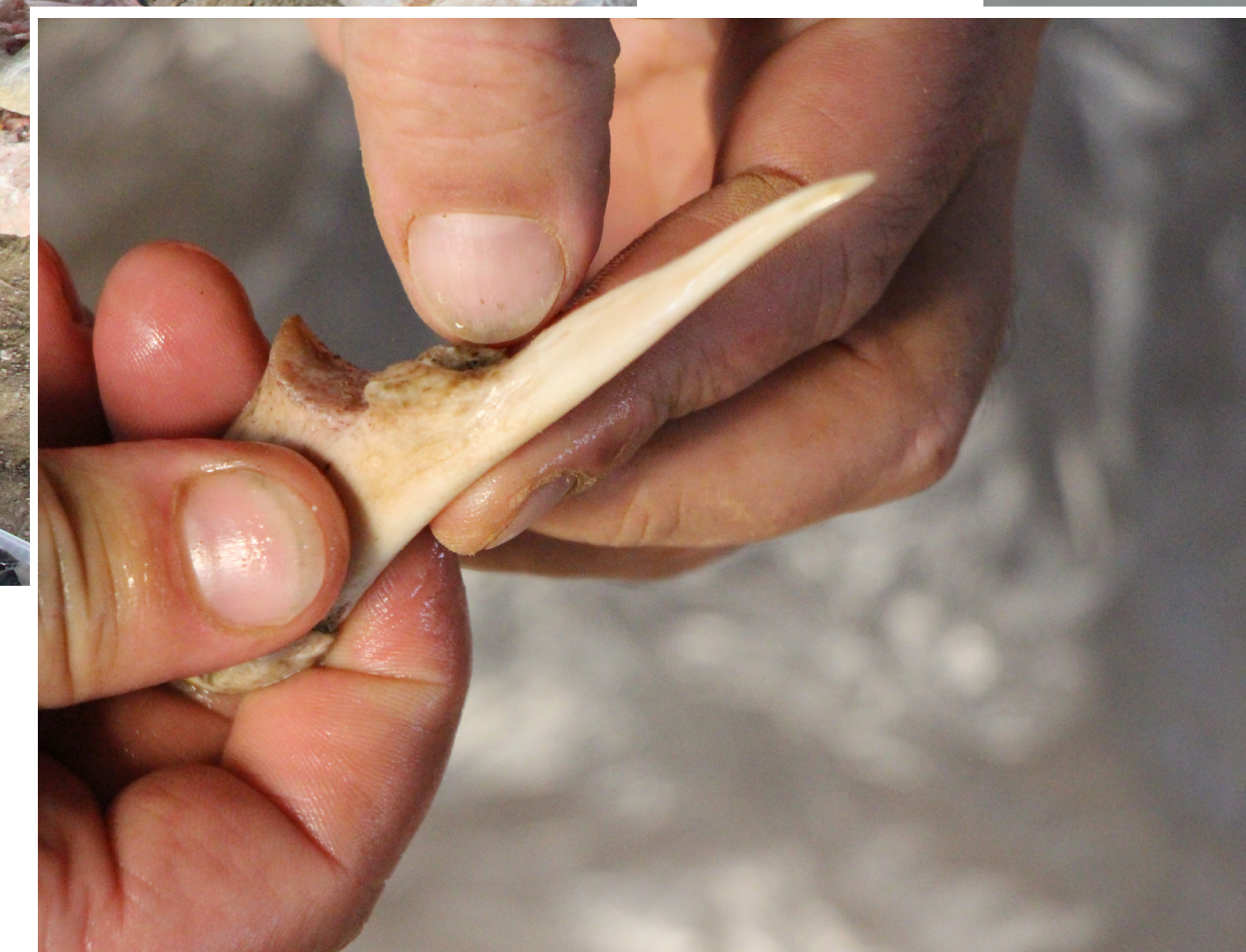
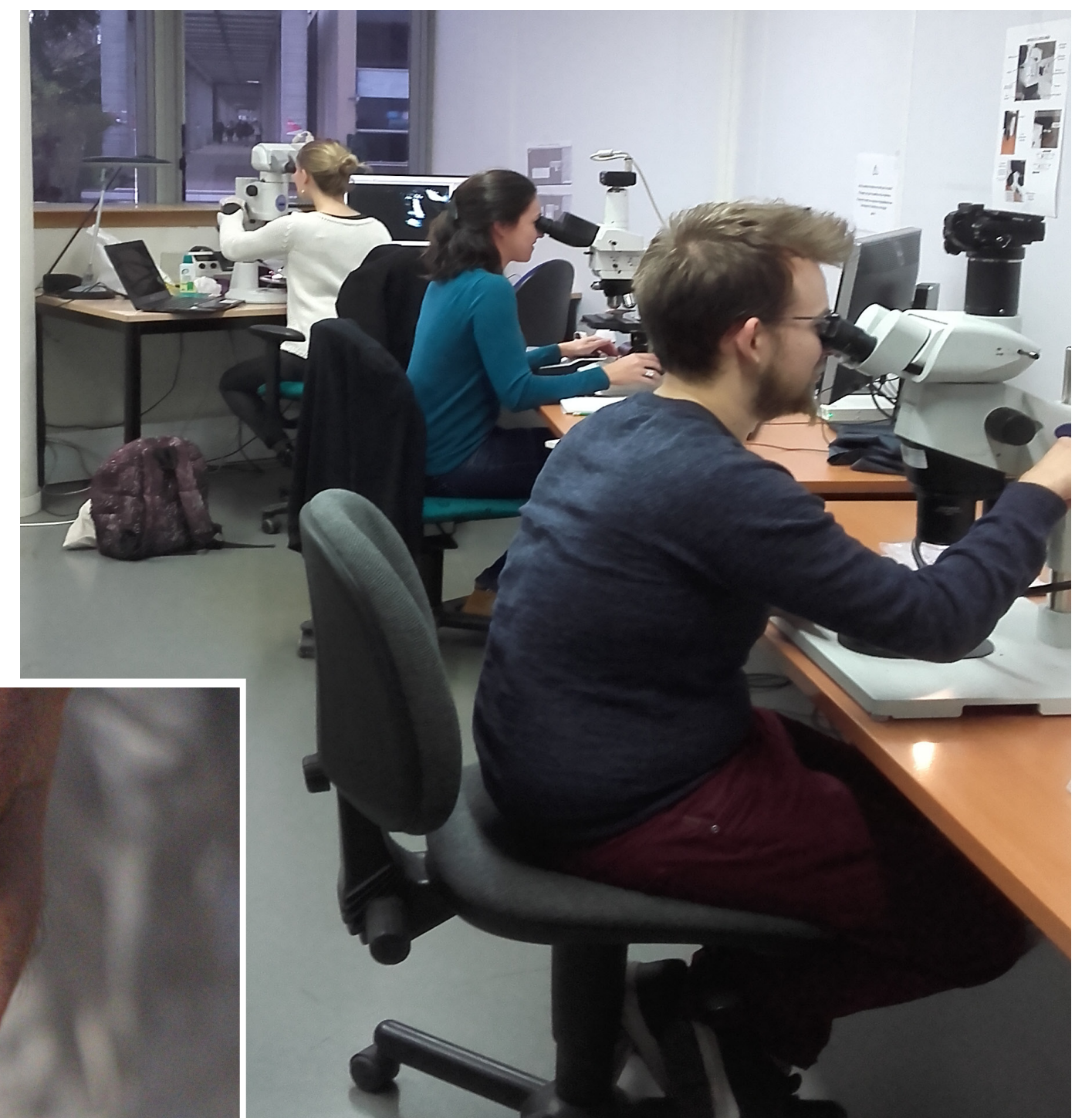


matériaux anciens et patrimoniaux

ile de France



### Training: teaching, seminars, experimentation, imaging



### Database for bone technology and function

Alexandra Legrand-Pineau (CNRS)

alexandra.pineau@cnrs.fr

Isabelle Sidéra (CNRS)

isabelle.sidera@cnrs.fr

Christophe Petit (Univ. Paris 1)

christophe.petit@univ-paris1.fr

Maison Archéologie & Ethnologie  
René Ginouvès - MAE  
21, allée de l'Université  
92023 Nanterre - France



Experimental tool

