



HAL
open science

Advancing tools to promote health equity across European Union regions: the EURO- HEALTHY project

Paula Santana, Ângela Freitas, Iwa Stefanik, Cláudia Costa, Mónica Oliveira, Teresa Rodrigues, Ana Vieira, Pedro Ferreira, Carme Borrell, Sani Dimitroulopoulou, et al.

► To cite this version:

Paula Santana, Ângela Freitas, Iwa Stefanik, Cláudia Costa, Mónica Oliveira, et al.. Advancing tools to promote health equity across European Union regions: the EURO- HEALTHY project. Health Research Policy and Systems, 2020, 10.1186/s12961-020-0526-y . hal-02479902

HAL Id: hal-02479902

<https://hal.science/hal-02479902>

Submitted on 14 Feb 2020

HAL is a multi-disciplinary open access archive for the deposit and dissemination of scientific research documents, whether they are published or not. The documents may come from teaching and research institutions in France or abroad, or from public or private research centers.


L'archive ouverte pluridisciplinaire **HAL**, est destinée au dépôt et à la diffusion de documents scientifiques de niveau recherche, publiés ou non, émanant des établissements d'enseignement et de recherche français ou étrangers, des laboratoires publics ou privés.

RESEARCH

Open Access



Advancing tools to promote health equity across European Union regions: the EURO-HEALTHY project

Paula Santana^{1,2*} , Ângela Freitas², Iwa Stefanik², Cláudia Costa², Mónica Oliveira³, Teresa C. Rodrigues³, Ana Vieira³, Pedro Lopes Ferreira⁴, Carme Borrell^{5,6,7}, Sani Dimitroulopoulou⁸, Stéphane Rican⁹, Christina Mitsakou⁸, Marc Mari-Dell'Olmo^{5,6,7}, Jürgen Schweikart¹⁰, Diana Corman¹¹, Carlos A. Bana e Costa³ and on behalf of the EURO-HEALTHY investigators

Abstract

Background: Population health measurements are recognised as appropriate tools to support public health monitoring. Yet, there is still a lack of tools that offer a basis for policy appraisal and for foreseeing impacts on health equity. In the context of persistent regional inequalities, it is critical to ascertain which regions are performing best, which factors might shape future health outcomes and where there is room for improvement.

Methods: Under the EURO-HEALTHY project, tools combining the technical elements of multi-criteria value models and the social elements of participatory processes were developed to measure health in multiple dimensions and to inform policies. The flagship tool is the Population Health Index (PHI), a multidimensional measure that evaluates health from the lens of equity in health determinants and health outcomes, further divided into sub-indices. Foresight tools for policy analysis were also developed, namely: (1) scenarios of future patterns of population health in Europe in 2030, combining group elicitation with the Extreme-World method and (2) a multi-criteria evaluation framework informing policy appraisal (case study of Lisbon). Finally, a WebGIS was built to map and communicate the results to wider audiences.

Results: The Population Health Index was applied to all European Union (EU) regions, indicating which regions are lagging behind and where investments are most needed to close the health gap. Three scenarios for 2030 were produced – (1) the ‘Failing Europe’ scenario (worst case/increasing inequalities), (2) the ‘Sustainable Prosperity’ scenario (best case/decreasing inequalities) and (3) the ‘Being Stuck’ scenario (the EU and Member States maintain the status quo). Finally, the policy appraisal exercise conducted in Lisbon illustrates which policies have higher potential to improve health and how their feasibility can change according to different scenarios.

Conclusions: The article makes a theoretical and practical contribution to the field of population health. Theoretically, it contributes to the conceptualisation of health in a broader sense by advancing a model able to integrate multiple aspects of health, including health outcomes and multisectoral determinants. Empirically, the model and tools are closely tied to what is measurable when using the EU context but offering opportunities to be upscaled to other settings.

Keywords: Health equity, European Union regions, Geographic inequalities, Population Health Index, Participatory approach, Foresight, Scenarios, Policy evaluation, WebGIS

* Correspondence: paulasantana.coimbra@gmail.com

¹Department of Geography and Tourism, Faculty of Arts and Humanities, University of Coimbra, Colégio S. Jerónimo, Largo D. Dinis, 3001-401 Coimbra, Portugal

²CEGOT-UC, Centre of Studies in Geography and Territorial Planning, University of Coimbra, Coimbra, Portugal

Full list of author information is available at the end of the article



Background

The increasing complexity in measuring health inequalities requires new instruments and more meaningful information at the regional and community level.

Considerable advances in knowledge have identified the key driving forces that are likely to influence health and well-being [1–6]. However, in terms of assessment methods [7, 8], there is still a lack of comparable measures able to provide a holistic assessment of population health based on the multiple determinants involved, ones which would then be applied across Europe [9], particularly at the regional and local level. It is a fact that there are significant variations amongst the factors that influence the health of European citizens [10–12]. These health variations are socially and spatially patterned, and in many cases their drivers can be traced to broader determinants such as socio-economic [4] and working conditions [5, 6], which people in Europe experience in very unequal ways [2, 13]. To characterise the health of the population currently living in European Union (EU) regions, it is crucial to consider multiple health dimensions that go beyond the health outcomes and include a range of determinants outside the healthcare sector [14, 15]. This can provide an evidence-based perspective of policies, with the potential to reduce inequalities and promote health equity [11]. Therefore, efforts towards developing models that combine multiple determinants of health, engagement of diverse stakeholders, and evidence-based policies and interventions have been stimulated and supported in the health research area [16], inclusively by the EU through its framework for funding research and innovation. These measures should be based on sound methods to enhance the potential of monitoring health and of foreseeing the impact of policies on health equity [9, 17, 18]. In our view, ‘health equity’ is understood here as *“the principle underlying a commitment to reduce and, ultimately, eliminate disparities in health and in its determinants, including social determinants”* [19].

With respect to population health determinants, it is known that health inequalities are shaped by one’s socioeconomic status, education and income level, living conditions or the physical and built environment conditions of one’s place of residence. Given that, these factors are preventable through policies and the allocation of resources and variations amongst them are deemed as inequitable and thus recognised as injustices [20]. In particular, WHO [3, 21] has acknowledged the impact of social determinants on health equity and well-being, not only by tackling personal behaviours but also by addressing life course stages, the broader society and the wider macro-level context, along with governance, delivery and monitoring systems.

Simultaneous to the discussion on the scope of health inequities, the understanding of health has evolved significantly [22], making the concept of health complex and holistic [23] and requiring that ‘what’ and ‘why’ be measured [24]. Kindig et al. [16] have suggested that, to understand the health of a society, the fundamental question to be asked is *“how we are doing – and how we can do better?”* Population health measurements have been recognised as one of the appropriate tools to support public health policy-making, monitoring and assessment by ensuring validity and cross-population comparability [9]. Summary measures built on relevant indicators are well-known instruments to provide a comprehensive picture of health and well-being [25, 26], with their multi-domain basis reflecting the complexity of people’s health. The interconnectedness of Health in All Policies [27], recognised in the Alma Ata Declaration on Primary Health Care [28] and the Ottawa Charter for Health Promotion [29], has created a new spectrum for looking at health and implied a need for an integrated approach to population health [25, 30]. Such an approach has the potential to guide policy-making and inter-sectorial action to improve health and reduce inequalities [31].

The aim of this paper is to present the ultimate outputs of the EURO-HEALTHY research project – to introduce the tools, demonstrate their capacity to measure and monitor population health across European regions, and finally present their potential to inform policy-makers and to stimulate and facilitate health equity discussions.

This paper will be of interest to policy-makers, researchers and those who wish to enhance their understanding on novel population health tools that are able to advance and promote evidence-based policy whose ultimate aim is a healthier and more equitable Europe.

The EURO-HEALTHY project

The aim of the EU-funded EURO-HEALTHY project (which stands for ‘shaping EUROpean policies to promote HEALTH Equity’) is to advance knowledge on policies that offer the highest potential to promote health equity across European regions (269 regions at Nomenclature of Territorial Units for Statistics level 2 (NUTS 2)) and urban areas. To achieve this goal, EURO-HEALTHY has built tools with the capacity to synthesise evidence for policy actions to address identified health inequalities and inequities across Europe [32].

From the outset, the project relied upon the collaboration of 15 multidisciplinary European institutions and involved nearly 100 stakeholders in the development and application of a sound multi-disciplinary and trans-disciplinary approach to appraise population health across EU regions. The structure of the project was

based on eight Work Packages (WPs) (Fig. 1), with six WPs being directly dedicated to the scientific work and two WPs to project coordination (WP1) and dissemination (WP8). Thematic WPs (WP2, 3 and 4) conducted research to provide evidence and data on health outcomes and health determinants, including socioeconomic, health behaviours and lifestyle determinants of health and well-being factors (WP2), environmental public health risks (WP3), and healthcare access and mortality profiles (WP4). WP6 and WP7 were ‘cross-cutting’ WPs, with the former focused on designing and applying innovative, participatory processes and multi-criteria decision analysis methods to build the Population Health Index (PHI), and the latter on assessing policies and good practices in health inequalities. WP5 integrated evidence and data, engaging all the Consortium partners, including other stakeholders, in the construction and application of the PHI to 269 European regions and to 9 selected metropolitan areas.

The flagship tool is the EURO-HEALTHY PHI, a multi-dimensional and multi-level index measure which, from the lens of health equity, evaluates EU population health in two Determinants and Outcomes components. The PHI is further divided into sub-indices by area of concern, health dimension and indicators, and is designed to be applied across all regions of

the 28 EU Member States [32] and to selected metropolitan areas [33].

To enlighten the discussion on policies to promote health equity in Europe, the PHI model was used as the starting point to develop the EURO-HEALTHY Scenarios for Population Health Inequalities in Europe for 2030 [32]. The rationale for developing the scenarios was two-fold – policy-makers not only need reliable tools to help them holistically evaluate the policies’ benefits in terms of their feasibility and power issues, but they must also reflect upon and assess how future events may affect health inequalities and which policies may produce adverse outcomes [34–36].

The bridge between academia, policy-makers and civil society was promoted by the EURO-HEALTHY consortium in two main forms – by using large-scale participatory approaches in the development of the EURO-HEALTHY PHI and of the EURO-HEALTHY scenarios, and by making mapping tools available for the dissemination of the results of applying the PHI to European regions amongst policy-makers and a wider audience, including civil society. Recognising that the Geographical Information Systems (GIS) facilitate both the compilation, analysis and dissemination of large and multi-dimensional information sets [37], the project has developed a WebGIS platform called

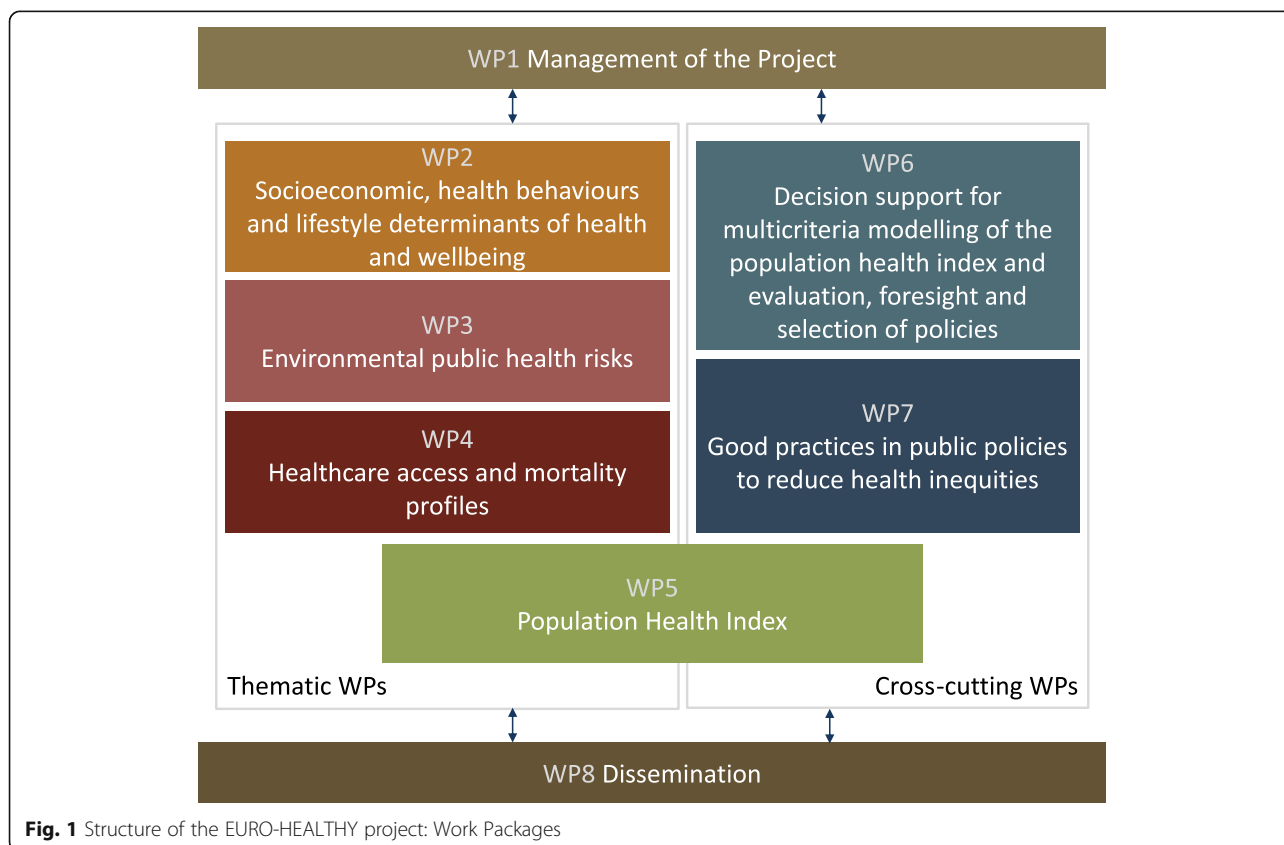


Fig. 1 Structure of the EURO-HEALTHY project: Work Packages

healthyregionseurope (<https://healthyregionseurope.uc.pt>). This online tool allows for the space–time analysis, monitoring and comparison of population health (current and future) at 269 NUTS 2 European regions, and for 9 selected metropolitan areas (Athens, Barcelona, Berlin, Brussels, Lisbon, London, Prague, Stockholm and Turin).

Data and methods

The project collected and systematised a vast amount of data for 80 indicators chosen for their relevance in assessing population health in Europe at three geographical levels – national (countries), regional (NUTS 2) and metropolitan (for selected municipalities) – and for the years 2000–2015. These data were aggregated in an online platform accessible at <https://eurohealthydata.uc.pt> that stores a wide range of data collected during the project and available for consultation and download. It can support researchers in their data analyses by facilitating access to a database with multiple indicators to investigate further inequalities and inequities in health across Europe.

The construction of EURO-HEALTHY PHI

The PHI structure is based on a multi-criteria model that was built with the MACBETH (Measuring Attractiveness by a Categorical Based Evaluation Technique) socio-technical approach [38] and makes use of Multi-Criteria Decision Analysis and value measurement concepts, integrating the technical elements of a multi-criteria value model and the social elements of interdisciplinary and participatory processes [39].

The set of indicators used within the PHI was informed via a participatory process in which experts and other stakeholders accessed updated scientific evidence and judged the relevance of indicators identified by the Consortium members within the WPs to appraise population health at the EU regional level [15]. A multidisciplinary group of 81 experts was involved in the participatory processes, from the structuring of the PHI multicriteria model (areas of concern, dimensions and indicators) to the evaluating phases (weights, value functions). These 51 Consortium members and 30 other stakeholders reflected not only a wide range of expertise but also Europe's diversity [15], as the group comprised representatives of national, regional and local authorities, advisors and technicians, international bodies, political parties, healthcare professionals, and urban planners (Table 1). The participatory processes are detailed below in the section describing stakeholders' involvement.

Presenting a bottom-up hierarchical structure, the PHI provides an evidence-based approach to analyse inequalities within a chained sub-index structure (Fig. 2) headed

Table 1 Composition and characteristics of the panel of experts involved in the construction of the Population Health Index

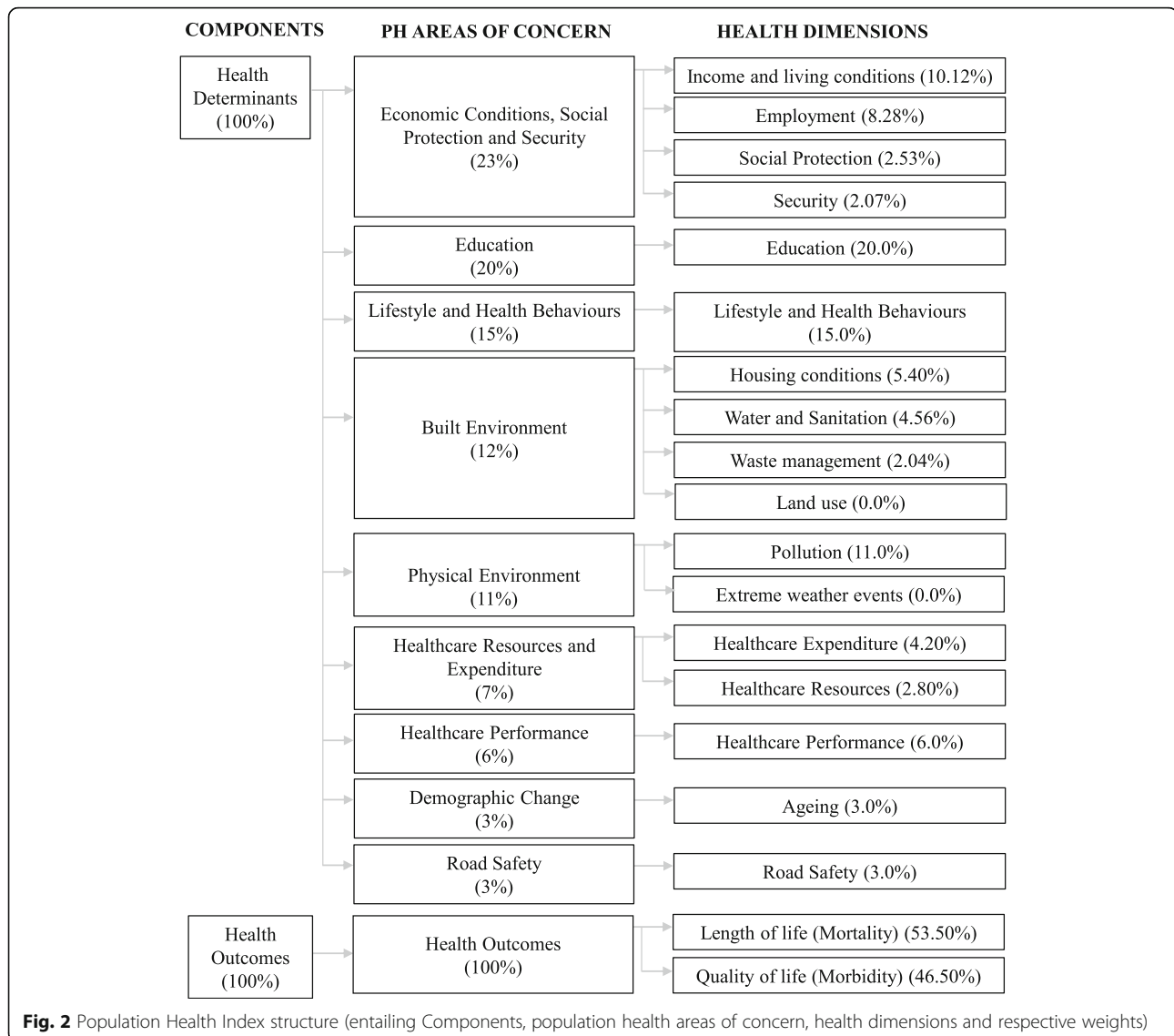
Characteristic	No.
Total	81
Gender	
Male	37
Female	44
Type of panellist	
Expert	51
Stakeholder	30
Field of expertise	
Economics and health systems	9
Environmental health, ecological systems, sustainability	15
Epidemiology, social medicine and public health	29
Health geography, demography and sociology	28
Region of Europe	
Northern Europe	16
Western Europe	18
Eastern Europe	12
Southern Europe	35

by Health Determinants and Health Outcomes indices. These indices are divided into ten sub-indices, corresponding to the main areas of concern for population health, namely (1) economic conditions, social protection and security, (2) education, (3) demographic change, (4) lifestyle and health behaviours, (5) physical environment, (6) built environment, (7) road safety, (8) healthcare resources and expenditure, (9) healthcare performance, and (10) health outcomes. These sub-indices are further divided into health dimensions and indicators. Each area of concern integrates a set of population health dimensions which are independent evaluation axes for appraising population health and are made operational by one or more indicators (Table 2).

More details on the methodology applied to build the PHI are given in Bana e Costa et al. [39] and Santana et al. [40].

EURO-HEALTHY scenarios

Technically, the approach to building EURO-HEALTHY scenarios required a process that would create such scenario structures to include a large number of drivers and combine a group elicitation method with the Extreme-World method [41, 42]. The social side of the approach required a combination of face-to-face and non-face-to-face participatory processes to obtain the views and opinions of health stakeholders and experts. A Web-Delphi process was conducted with a large and diverse panel of experts and other



stakeholders and was established to generate ideas for potential causes of future changes as well as to inform which drivers were relevant for future population health inequalities (departing from current health inequalities across European regions). Drivers identified by the panellists were complemented with future-oriented evidence and organised under the PESTLE categories (Political, Economic, Social, Technological, Legal and Environmental). This set of data was the starting point from which a strategic small group worked to organise the drivers into three scenario structures in a (face-to-face) workshop process format. The process was finalised by developing scenario narratives for the three plausible scenario structures [42].

The detailed description of this process is available in Alvarenga et al. [43].

Evaluating and selecting urban policies under EURO-HEALTHY scenarios

The multi-methodology uses Multi-Criteria Decision Analysis to appraise policies on a common basis and, within the case study, was used to engage 33 local stakeholders in a series of face-to-face workshops to identify critical situations for equity in the Municipality of Lisbon. In this process, a strategic group of 16 stakeholders (policy-makers, health professionals, urban planners, social security practitioners, representatives of civil society) was engaged in a 2-day decision conferencing process to evaluate the potential of a set of policies to improve overall health and reduce health inequities. The impact of policies was valued according to their contribution to priority intervention axes corresponding to eight of the above-mentioned PHI areas of concern and

Table 2 List of indicators included in the EURO-HEALTHY Population Health Index model, grouped by population health area of concern and health dimension

Population health area of concern	Health dimension	Indicators		
Economic conditions, social protection and security	Employment	Unemployment rate (%) Long-term unemployment rate – 12 months and more (%)		
	Income and living conditions	Disposable income of private households per capita (Euro per inhabitant) People at risk of poverty or social exclusion (%) Disposable income ratio – S80/S20 (ratio)		
	Social protection	Expenditure on care for the elderly (% of GDP)		
	Security	Crimes recorded by the police (per 100,000 inhabitants)		
Education	Education	Population aged 25–64 with upper secondary or tertiary education attainment (%) Early leavers from education and training (%)		
Demographic change	Ageing	At risk of poverty rate of older people – aged 65 years and over (%) Ageing index (ratio)		
Lifestyle and health behaviours	Lifestyle and health behaviours	Adults who are obese (%) Daily smokers – aged 15 and over (%) Pure alcohol consumption – aged 15 and over (litres per capita) Live births by mothers under the age of 20 (%)		
		Physical environment	Pollution	Annual mean of the daily PM _{2.5} concentrations (µg/m ³) Annual mean of the daily PM ₁₀ concentrations (µg/m ³) Greenhouse gases (total tonnes of CO ₂ eq. emissions per capita) Population exposed to traffic noise – (Lden 55–59 db, during day) (%) ^a
		Built environment	Extreme weather events ^a	Population affected by flooding (per 1,000,000 inhabitants) ^a
			Housing conditions	Average number of rooms per person Households without indoor flushing toilet (%) Households without central heating (%)
Water and sanitation	Population connected to public water supply (%) Population connected to wastewater treatment plants (%)			
Road safety	Road safety	Waste management	Recycling rate of municipal waste (%)	
		Land use ^a	Population density (inhabitants/km ²) ^a	
Healthcare resources and expenditure	Healthcare resources	Road safety	Victims in road accidents – injured and killed (per 100,000 inhabitants) Fatality rate due to road traffic accidents (per 1000 victims)	
		Healthcare resources	Medical doctors (per 100,000 inhabitants) Health personnel – nurses and midwives, dentists, pharmacists and physiotherapists (per 100,000 inhabitants)	
	Healthcare expenditure	Healthcare expenditure	Total health expenditure (PPS\$ per capita) Private households' out-of-pocket expenses on health (% of total health expenditure) Public expenditure on health (PPS\$ per capita)	
Healthcare performance	Healthcare performance	Hospital discharges due to diabetes, hypertension and asthma (per 100,000 inhabitants) Amenable deaths due to healthcare (standardised death rate per 100,000 inhabitants)		
Health outcomes	Length of life (mortality)	Length of life (mortality)	Life expectancy at birth (years) Infant mortality (per 1000 live births) Preventable deaths (standardised death rate per 100,000 inhabitants)	
			Quality of life (morbidity)	Self-perceived health less than good (%) Age-standardized disability-adjusted life year rate (per 100,000 inhabitants) Low birth weight (%)

^a Lden day–evening–night noise level, PPS purchasing power standards

^a Dimensions and indicators included in the Population Health Index model (conceptual) but not used in its application (adjusted) to the 269 NUTS 2 regions, due to lack of data

to the comparative added value of improving each of these intervention axes. The feasibility of policies was assessed in light of the EURO-HEALTHY scenarios.

WebGIS – healthyregionseurope

EURO-HEALTHY developed an open access user-friendly WebGIS platform (<http://healthyregionseurope.uc.pt>) to provide both data and a snapshot of European population health over multiple dimensions and geographical scales – at the regional level, for 269 NUTS 2 regions of the 28 EU countries, and at the municipal level, for 540 municipalities of 9 selected metropolitan areas (Athens, Barcelona, Berlin, Brussels, Lisbon, London, Prague, Stockholm and Turin).

The platform was built to serve not only as a visualisation tool, but also to enable the exploration and analysis of geographical patterns of the PHI value-scores (ranging for each indicator from 0 to 100, with 0 representing the lowest level of population health and 100 the highest level of population health) for the year 2014 (Fig. 3).

Results

The EURO-HEALTHY PHI can be read as a ‘composite measure’, ‘composite index’ or ‘composite indicator’ based on a clear conceptual framework, integrating the different elements of population health and capable of considering multiple aspects delivered as an aggregated score. The EURO-HEALTHY project sustained the added-value of developing such a holistic measure, integrating indicators from multiple health dimensions across EU countries, regions and selected metropolitan areas [32].

The PHI follows a population health approach as described and popularised by Kindig and Stoddart [44], taking the view that population health should be measured considering the *“health outcomes and their distribution within a population, the patterns of determinants that influence such outcomes, and the policies that influence the optimal balance of determinants”*. The underlying assumption focuses on improving the health of the population rather than that of individuals, and on reducing health inequalities through actions that target the determinants of health.

In line with this, the EURO-HEALTHY PHI was designed as a comprehensive tool to enable evidence-based policy-making by (1) allowing for the measuring and monitoring of the overall health and well-being of regional European populations; (2) accounting for the multi-dimensional nature of health determinants; (3) foreseeing and discussing the impact of multi-level policies that can influence population health and geographical health inequalities in Europe; and (4) providing a basis for multilevel policy dialogue on health and health equity.

The EURO-HEALTHY PHI was applied to analyse population health and identify geographical health inequalities in 269 NUTS 2 level regions, 9 selected metropolitan areas (Athens, Barcelona, Berlin, Brussels, Lisbon, London, Prague, Stockholm and Turin) and in 2 case studies (Lisbon and Turin). The PHI outputs offer different ways of looking at health inequalities in Europe. For instance, they provide opportunities to analyse how European Structural and Investment Funds can be used to reduce population health inequalities and enable policy dialogue at national and regional levels [45]. In addition, when the PHI is regularly updated, it becomes a valuable resource for policy monitoring and evaluation.

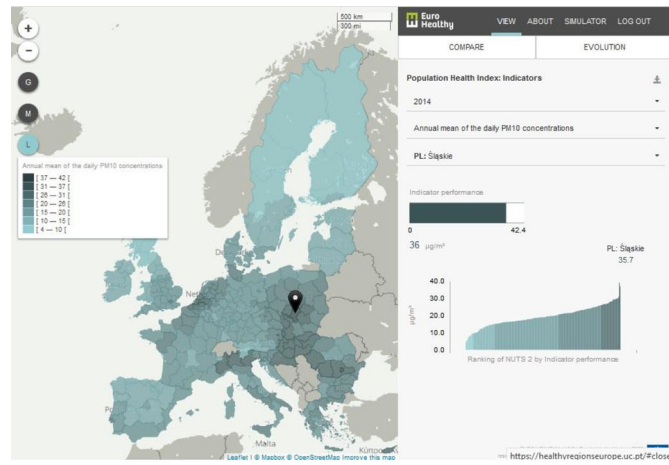
In the interest of developing foresight tools for policy improvement, a key goal of the project was to build EURO-HEALTHY scenarios to inform potential drivers with a means to affect future health and health inequalities across European regions and to understand the extent to which future evolutions can be triggered by today’s actions [46]. Following these objectives, EURO-HEALTHY produced health inequalities scenarios for 2030 through a novel socio-technical approach that combined present and future-oriented evidence with the perspectives and values from a diverse group of experts and other stakeholders across Europe within a structured process.

Accordingly, three EURO-HEALTHY scenarios for 2030 were produced [42] – (1) the ‘Failing Europe’ scenario as a worst-case (although plausible) scenario, including all driver configurations leading to enlarging the population health inequalities; (2) the ‘Sustainable Prosperity’ scenario based on the best-case scenario structure, including all configurations leading to decreasing the population health inequalities; and (3) the ‘Being Stuck’ scenario, which reflects a situation where the EU and EU Member States maintain the status quo and are ‘stuck’ with those specific difficulties that keep Europe from moving forward such as generating new consensus or common policies.

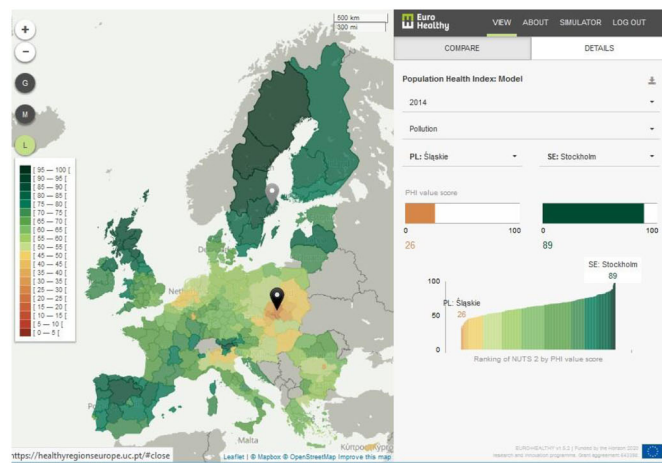
Two scenarios – ‘Sustainable Prosperity’ and ‘Failing Europe’ – were tested in a real exercise conducted within the scope of the Lisbon case study to formulate and assess policies to improve urban health inequalities, which we further describe.

Aligned with the methods used to build the PHI and scenarios, EURO-HEALTHY developed a transparent multi-methodology to inform policy appraisal and selection. Underlying the multi-methodology is (1) the recognition of the importance of policy-makers and other stakeholders’ engagement in the policy appraisal process; (2) the need for policy selection accounting for policy feasibility and other implementation issues; (3) the acknowledgment that

Map A



Map B



Map C

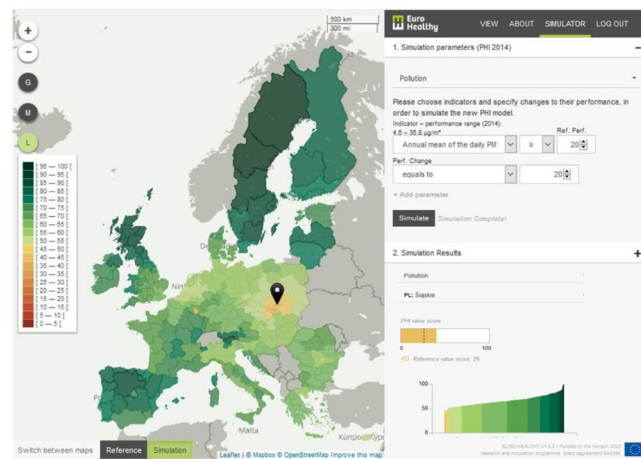


Fig. 3 (See legend on next page.)

(See figure on previous page.)

Fig. 3 Screenshots from the WebGIS *healthyregionseurope*. Note: Map **a** shows the tab view for the Population Health Index (PHI) indicators, in terms of performance (illustrative example is presented for the indicator “Annual mean of the daily PM₁₀ concentrations” where the performance of one region – Śląskie, Poland – is shown). Map **b** shows the tab view for the PHI model, in terms of value-score (illustrative example is presented for the health dimension “Pollution” where the value-scores of two regions – Śląskie, Poland, and Stockholm, Sweden – are being compared). Map **c** shows the tab for the Simulator (illustrative example is presented for the simulation conducted in the health dimension “Pollution”, where a change of performance on the indicator “Annual mean of the daily PM₁₀ concentrations” generated new value scores; a specific example of value improvement can be seen for the region Śląskie – Poland)

foreseeing the impact of policies involves uncertainty and that scenarios are a tool to deal with uncertainty in the policy appraisal process; (4) the recognition that health public policies aim to achieve multiple objectives, including maximising health gains and reducing inequalities; and (5) the acknowledgment that indices are powerful tools for assessing the impact of policies.

The application of this multi-methodology to evaluate local policies in the Lisbon case study was successful in illustrating, firstly, which policies have higher potential to improve overall health and, secondly, how the local policies’ feasibility can change according to different European scenarios. Specifically, European scenarios have been shown to have an important impact on the capacity of the Lisbon municipality to implement certain policies and to raise awareness of those individuals involved in the decision-making process as to the policies’ risks and opportunities [47]. Furthermore, the participatory component of the multi-methodology demonstrated how interaction between local stakeholders can be facilitated given the emphasis on the different perspectives on health equity and its indicators within structured and transparent formats.

The WebGIS offers a set of dynamic features for users exploring population health in Europe (1) analysing and comparing the regional performances and value-scores in an aggregated and disaggregated way, following a value tree index structure (with sub-indices for components, areas of concern, dimensions and indicators) (Fig. 3, maps a and b), and (2) simulating changes in the performances of indicators (as if considering the impact of policies) to understand the potential effect of policies on the regional population health scores and thus on regional inequalities across Europe. For instance, the simulator web functionality provides evidence on the actual inequalities across EU regions and allows the user to change one or a set of indicators’ performances, considering different policy strategies (e.g. reducing the levels of PM₁₀ of all regions whose current performances are above 20 µg/m³ to the reference value of 20 µg/m³) and generating new population health scores (Fig. 3, map c). In addition, maps show the regions and countries that benefit from a given policy or from a package of policies.

These WebGIS platform functionalities support the transfer of knowledge from scientists to policy-makers and to the public in general, as it communicates fundamental information in a user-friendly way to help those concerned with understanding and reducing health gaps in Europe.

The WebGIS is a web database platform that was specifically designed to support researchers in data analysis and to investigate inequalities and inequities in health across EU regions. The complementary *eurohealthydata* platform is accessible at <https://eurohealthydata.uc.pt> and is password protected (passwords assigned upon request via the website) and aggregates 80 indicators collected at 3 geographical levels – national (countries), regional (NUTS 2) and metropolitan (municipalities) – for the period 2010–2015. This web-based data platform has the capacity to store and download all data (metadata, alphanumeric and geographical data) collected in the project. Both platforms were built using open source software.

Discussion

From its inception, the project was conceived to represent widely shared principles of the EU with respect to economic, social and territorial cohesion as a way to promote the well-being of all EU citizens. The production of reliable evidence to inform the European efforts to obtain these values provide the basis of the research activities. We herein emphasise the key features and the potential for learning from EURO-HEALTHY research.

Evidence and tools supporting policy-makers and stakeholders to address health inequalities on multiple scales

The information generated by the PHI not only allows for a deeper understanding of which factors influence the overall health of a specific EU region or groups of regions, but it can also provide guidance for the evaluation and selection of policies with the greatest potential to address inequalities between regions.

The regional population health scores can be analysed in various forms, e.g. by grouping regions with a similar profile in terms of performance in a specific dimension or indicator (clusters), by measuring statistically significant differences between groups of regions (e.g. by categories of regions eligible to receive Cohesion Policy

funds) and by identifying which dimensions constitute areas for improvement across all EU regions. By utilising the Health Determinants Index and its dimensional sub-indices, policy-makers at different levels of decision-making (European, national and regional) are able to examine the relationships between health determinants, health outcomes and policies from different sectors. The PHI works as a basis for understanding which policies (from different sectors and competing for resources) have the highest potential to improve health (e.g. in a specific region or group of regions of the same country) and to decrease health inequalities (e.g. between regions of the same country or between EU regions). Further analysis can also be done on what policies have contributed to the current population health scores in selected regions.

From the perspective of policy evaluation, the PHI multicriteria model can be used both as an instrument to design and select policies on an *ex ante* basis as well as *ex post*, monitoring the impact of policies across time and to perform cost-effectiveness analyses. This would require a dynamic update of the PHI, which implies feeding the model with up-to-date data and, potentially, the inclusion of new indicators reflecting novel research and evidence pointing out other factors linked to local priorities or global trends. It should be noted that the updating of the PHI model offers opportunities but also presents certain constraints to be overcome, namely those related to data availability in some dimensions. Data gaps at the regional level on several indicators led to some adjustments between the conceptual model and the model implemented and available via the WebGIS. Issues with availability and quality of the indicator data at sub-national levels should be fundamentally addressed in order to obtain the full potential of this tool [48].

One of the strengths of using the PHI and the methods employed in its construction is the involvement of stakeholders and experts whose knowledge is beneficial to the robustness and applicability of the results. Innovative policy design, using the PHI in conjunction with the EURO-HEALTHY scenarios, can be introduced to tackle health inequalities across multiple domains and levels. Together, these tools inform on current population health variations in the EU, on the multiple factors underlying those variations (drivers) and on how overall health will evolve if those factors are changed positively or negatively.

The PHI results can identify what the problems are and where action is most needed. Policy-makers and stakeholders can easily access this information through a WebGIS platform that communicates the PHI in a very interactive way, pointing to health

inequalities between regions and across multiple dimensions.

EURO-HEALTHY considered that maps displaying health information in a simple, clear way are important analytic tools for decision-makers in their efforts to support planning, develop equitable policy and assess equity [49]. GIS have become tools of considerable usefulness [50] in monitoring diseases [51], detecting the differences and similarities in population health [52], and in enabling overall understanding of health distribution in the population [53] and of the relationship between health and space [54, 55]. The adoption of a place-based approach and a multi-methodology (including scenarios) to evaluate local policies in the Lisbon case study unlocked the potential for transformative change in the way of formulating and evaluating policies across sectors that go beyond the health sector. This experience could be transferred to other cities with the necessary adjustments in terms of panel formation, indicators and the policies at stake.

Stakeholders' involvement through large-scale participatory processes

At the heart of the project was the force of continued stakeholder engagement alongside innovative methods to develop the EURO-HEALTHY tools. Over a 3-year journey, the project has, in a transdisciplinary way, integrated more than 150 stakeholders and experts from 15 European countries, with these being involved directly in research design from the beginning of the project. This process of sharing ideas, bringing European countries together, and learning from each other strengthened the solidarity of the project's action. Stakeholders were identified by the EURO-HEALTHY consortium partners and selected based on a variety of characteristics, namely (1) their ability to influence policy at various decision-making levels (national, regional and metropolitan), (2) their scope for intervention (public sector, private sector and civil society), (3) their area of work (e.g. environment, public health, urban planning, groups at risk), and (4) geographic location (meant to reflect Europe's diversity) [56].

Stakeholders and researchers were regularly involved in the project research activities to develop the EURO-HEALTHY tools, produce knowledge and evidence, and mostly build a bridge of communication between scientists and policy/decision-makers [56]. Web-based Delphi panels, decision conferences and face-to-face workshops were successful formats for interacting with stakeholders and researchers to collect their insights and views on (1) the relevant indicators to evaluate and monitor regional European population health (Web-Delphi for selecting indicators for the PHI) [15]; (2) the importance of closing gaps in the performance of distinct indicators across

EU regions (Web-Delphi for weights) [39]; (3) added value to population health from improving performance along the indicator range (Web-Delphi for value functions) [39]; (4) drivers for future population health inequalities scenarios (Web-Delphi for scenario building) and for population health inequalities scenarios in Europe (workshops) [42]; and (5) formulation and evaluation of policies with the highest potential to improve population health and to reduce inequities at the urban level, namely in the Lisbon and Turin case studies (workshop and decision conferences) [35].

EURO-HEALTHY web-based Delphi participatory processes have proved to be a convenient and time-efficient method for multi-level stakeholders. This has also been confirmed in other health-related studies [14] and has served to generate useful information to help smaller groups in the construction of the EURO-HEALTHY PHI model and EURO-HEALTHY scenarios, and in the evaluation of policies.

The involvement of a transdisciplinary panel of researchers and stakeholders in the process of shaping the EURO-HEALTHY tools added diverse points of view, which consequently validated the holistic perspective of looking at health. This approach was crucial in securing sustainable engagement from stakeholders in the project activities, enhancing their understanding of the drivers of health inequalities in Europe, and strengthening their will, interest and power to promote change via their future decisions [15]. It served as a catalyst for an extended dialogue as to which policies produce the highest benefit in promoting more equitable and healthy environments at different levels (national, regional and local), while bearing in mind the impact that different policies can have on population health and health equity [57]. In this sense, the project represented “*the science of stakeholder engagement in research*” – a term coined by Goodman and Thompson ([58], p. 489), where they strongly advocate for enhancing efforts towards meaningful stakeholder engagement that will contribute to both research synergy and achieving results that would otherwise be impossible via isolated actions alone. The Lisbon and Turin case studies have shown that stakeholder engagement is fundamental to promoting consensus and establishing priorities for intervention at the local scale to reduce unjust health inequalities in transparent formats [32].

‘Learning networks’ to reduce health inequities across Europe

It is a stated challenge for the EU to take action centrally to address the highly localised, spatially patterned health issues that are often heavily shaped by local and regional circumstances. Featuring broad-ranging data on a variety of countries, regions and metropolitan areas, and

gathered and utilised in one measure, the PHI facilitates the joint learning process, encourages conversation and dialogue, and supports the identification of relevant partners (regions) tackling similar problems. In this context, the evidence provided by the project, and specifically by the PHI, has the potential to create windows of opportunity, ones which could evolve into the establishment of ‘learning networks’ – mechanisms supporting informed and localised actions on multiple health determinants to mitigate the unjust inequalities in a multi-dimensional environment. This process would assist in advocating, stimulating and facilitating those actions that can promote equity in European health through promoting knowledge transfer between scientists and decision-makers. The creation of these ‘learning networks’, whether between regions and/or cities, would highly benefit from EU funding, namely via European Structural Investments Funds, which provide the adequate framework to boost synergies and implement such regional networking. This would create greater opportunities for regional convergence and for documented good practices with the potential to improve other low-performing localities. This value takes on significant meaning in decision-making and decision support to improve equity and facilitate successful action.

Further research

Further research on developing technological platforms for expert and stakeholder engagement should be emphasised given the relevance of considering different points of view as well as disseminating scientific evidence and reliable data. In this context, the Web-Delphi participatory processes applied in the EURO-HEALTHY project have proved to be an inclusive and effective way to collect information from an expanded number of geographically dispersed experts and stakeholders. Yet, a certain amount of sensitivity bias related to the composition of the panels was expected due to the different backgrounds and geographical contexts in which experts and stakeholders live and work. In theory, the experts’ judgments may not be in line with the context where the decision-making process is to be integrated. Therefore, in order to reduce the expert’s bias in future studies, this issue should be addressed.

The development and application of the PHI model at other geographic levels (e.g. local) and settings (e.g. North America, Africa) requires further research on adjusting the model to the specific contexts. Conducting participatory processes with local panels of stakeholders and other experts, for example, by defining adequate indicators that reflect the realities of local conditions and the respective weights and value functions, are considered imperative.

The EURO-HEALTHY PHI may also serve as a starting point and useful tool to initiate a dialogue with local stakeholders and policy-makers about which priority intervention fields each locality should address in the interest of improving overall population health. This would be possible by further extending the evaluation of policies conducted in the Lisbon and Turin case studies to other case studies and by creating tools and knowledge to integrate policy evaluation with uncertainty and scenarios.

The EURO-HEALTHY tools were built under the points of view and perspectives of a panel of researchers and stakeholders taking into account the available data at the present time. In the future, it is absolutely necessary to continuously monitor data on health determinants and health outcomes in order to update the models of PHI and scenarios. The set of relevant indicators and respective weights could then change, reflecting alterations driven by policies or new societal challenges. Explicit attention should be given to social, economic and environmental determinants that shape health equity. These indicators are fundamental to inform policy and monitor its effectiveness. Currently, despite significant advances in data harmonisation at the EU level (e.g. Eurostat), there is still room for improved data to monitor and assess specific health determinants [48] that shape health outcomes at different geographical levels in a comparable way [59]. The benefit of using the PHI in the future will be accentuated if there is greater alignment of the data collected from different data sources (in the current PHI not all data were available at the same time and spatial resolution). Efforts should be intensified to collect and harmonise data at the sub-national level with the goal of narrowing the gaps in data amongst and within the EU Member States [48].

Conclusions

The EURO-HEALTHY project achieved its goal in providing a comprehensive evaluation of health inequalities across Europe and ultimately incorporating innovative ways of supporting the analysis and selection of policies with the potential to shape healthier settings. The project has delivered tools – mostly based on the PHI – which are scientifically and methodologically robust and innovative and yet simple and user-friendly. The open-access WebGIS platform offers an easy and interactive way to visualise and analyse the population health variations across EU regions and metropolitan areas in a way that can enable more informed health advocacy across Europe. The highly participatory component proved to be paramount for integrating multiple views and facilitating information exchange amongst the involved stakeholders and experts.

At the same time, the data and evidence that was generated to feed these tools provide opportunities for comparability across different geographical scales, which is an appeal to reinforce efforts to collect, harmonise and use data, namely at sub-national level.

The EURO-HEALTHY tools should be used, particularly by policy-makers, to support decision-making in relation to those policies with the highest potential to improve health equity in Europe and to further monitor the impact of the policies of today as well as those of the future.

Abbreviations

EU: European Union; EURO-HEALTHY: Shaping EUROpean policies to promote HEALTH equity; GIS: Geographic Information System; NUTS 2: Nomenclature of Territorial Units for Statistics level 2; PHI: Population Health Index; WPs: Work Packages

Acknowledgments

The authors would like to acknowledge the significant contribution and insightful comments made throughout the project by the Project Advisory Board members (Alec Morton, Patricia O'Campo, Pedro Pita Barros and Anne Diez-Roux), who guaranteed the quality and success of the project. Special thanks are also extended to the panels of experts and the stakeholders involved in several participatory processes of the project. Finally, we would like to thank João Bana e Costa, Luís Monteiro, Joaquim Patriarca and João Veiga for developing the web-based platforms used in the project activities.

EURO-HEALTHY investigators:

Carlota Quintal, João Malva, Lúcio Cunha, Paulo Nossa, Ricardo Almendra, Rui Gama Fernandes (UC – University of Coimbra, Portugal); Laia Palència, LLuís Camprubí, Maica Rodríguez-Sanz, Mercè Gotsens (ASPB – Agència de Salut Pública de Barcelona, Spain); Sotiris Vardoulakis, Clare Heaviside (PHE – Public Health England, United Kingdom); Quentin Tenailleau, Clara Squiban (UPO – Paris Nanterre University, France); António Alvarenga, Lílíana Freitas, Paulo Correia (IST-UL – Instituto Superior Técnico, Universidade de Lisboa, Portugal); Céline Ledoux, Eva Pilot, Thomas Krafft (UM – Maastricht University, The Netherlands); Hynek Pikhart, Joana Morrison (UCL – University College London, United Kingdom); Conrad Franke (BHT – Beuth University of Applied Sciences Berlin, Germany); Bo Burström (Karolinska Institute, Sweden); Evangelia Samoli, Klea Katsouyanni, Sophia Rodopoulou (UoA – National and Kapodistrian University of Athens, Greece); Dagmar Džúrová, Michala Lustigová (CUP – Charles University, Czechia); Anna Cavallo, Nathalie Coué (CSI-Piemonte – Information System Consortium, Italy); Lucia Bosáková, Michal Tkáč (EUBA – University of Economics in Bratislava, Slovakia); Hadewijch Vandenheede, Patrick Deboosere (VUB – Vrije Universiteit Brussel, Belgium); Giuseppe Costa, Nicolás Zengarini (ASL-TO3 – Local Public Health Agency Torino 3, Italy).

Authors' contributions

PS was the EURO-HEALTHY project leader and directed the study; PS, AF, IS and CC drafted the manuscript, prepared the tables and figures, and revised it critically based on suggestions from other investigators. CBC directed Work Package 6, was responsible for the decision support for multicriteria modelling of the Population Health Index and led the evaluation, foresight and selection of policies. MO, TCR and AV worked in the design and application of multicriteria decision analysis methods to build the Population Health Index, to evaluate policies and develop scenarios. PLF conducted analysis within Work Package 5 (Population Health Index) and participated as expert in all participatory processes. CB and MM conducted research to provide evidence and data regarding health outcomes and socioeconomic, health behaviour and lifestyle determinants of health (Work Package 2) and participated as experts in all participatory processes. SD and CM conducted research on environmental public health risks (Work Package 3) and participated as experts in all participatory processes. SR conducted research on healthcare access and mortality profiles (Work Package 4) and participated as an expert in all participatory processes. JS and DC participated as experts in all participatory processes. All authors contributed to scientific discussions of methodology,

analyses and interpretation. All authors have read and approved the final manuscript.

Funding

The EURO-HEALTHY project (Shaping EUROpean policies to promote HEALTH equity) has received funding from the European Union's Horizon 2020 research and innovation programme under Grant Agreement No. 643398. Additionally, this study was supported by the Centre of Studies in Geography and Spatial Planning (CEGOT), funded by national funds through the Foundation for Science and Technology (FCT) under the reference UID/GEO/04084/2019. The authors Angela Freitas and Cláudia Costa are recipients of Individual Doctoral Fellowships funded by national funds through the Foundation for Science and Technology (FCT), under the references SFRH/BD/123091/2016 and SFRH/BD/132218/2017, respectively.

Availability of data and materials

The datasets generated and analysed during the current study are stored in the *eurohealthydata* repository (<https://eurohealthydata.uc.pt>) and are available from the corresponding author upon reasonable request.

Ethics approval and consent to participate

EURO-HEALTHY participatory processes were approved by the Centre for Social Studies Ethics Commission (CE-CES) of the University of Coimbra. All participants were invited and informed as to the objective, scope and research design, and the uses of data within the scope of the EURO-HEALTHY project. In addition, they provided written consent to participate via email before being enrolled in the participatory processes.

Consent for publication

Not applicable. The manuscript does not include details relating to an individual person.

Competing interests

The authors declare that they have no competing interests.

Author details

¹Department of Geography and Tourism, Faculty of Arts and Humanities, University of Coimbra, Colégio S. Jerónimo, Largo D. Dinis, 3001-401 Coimbra, Portugal. ²CEGOT-UC, Centre of Studies in Geography and Territorial Planning, University of Coimbra, Coimbra, Portugal. ³CEG-IST, Centre for Management Studies of Instituto Superior Técnico, Universidade de Lisboa, Avenida Rovisco Pais, 1049-001 Lisbon, Portugal. ⁴CEISUC, Center for Health Studies and Research, Faculty of Economics, University of Coimbra, Coimbra, Portugal. ⁵ASPB, Agència de Salut Pública de Barcelona, Barcelona, Spain. ⁶CIBER Epidemiología y Salud Pública (CIBERESP), Madrid, Spain. ⁷Institut d'Investigació Biomèdica (IIB Sant Pau), Barcelona, Spain. ⁸PHE-CRCE, Centre for Radiation, Chemical and Environmental Hazards, Public Health England, Didcot, OX11 0RQ, United Kingdom. ⁹Laboratoire Dynamiques Sociales et Recomposition des espaces (LADYSS), Paris Nanterre University, Paris, France. ¹⁰Beuth University of Applied Sciences Berlin (BHT), Berlin, Germany. ¹¹Karolinska Institute (KI), Stockholm, Sweden.

Received: 19 June 2019 Accepted: 15 January 2020

References

- Marmot M, Allen JJ. Social determinants of health equity. *Am J Public Health*. 2014;104(Suppl. 4):S517–9.
- Marmot M, Allen J, Bell R, Bloomer E, Goldbatt P, Consortium for the European Review of Social Determinants of Health and the Health Divide. WHO European review of social determinants of health and the health divide. *Lancet*. 2012;380:1011–29.
- Commission on Social Determinants of Health. Closing the gap in a generation: health equity through action on the social determinants of health. Final report of the Commission on Social Determinants of Health. Geneva: WHO; 2008.
- WHO-CSDH. Final report of the Commission on Social Determinants of Health. In: Marmot M, editor. Closing the gap in a generation: health equity through action on the social determinants of health. Geneva: World Health Organization; 2008. p. 246.
- Burgard SA, Lin KY. Bad jobs, bad health? How work and working conditions contribute to health disparities. *Am Behav Sci*. 2013;57(8). <https://doi.org/10.1177/0002764213487347>.
- Barnay T. Health, work and working conditions: a review of the European economic literature, OECD economics department working papers, no. 1148. Paris: OECD Publishing; 2014.
- Bouchard L, Albertini M, Batista R, de Montigny J. Research on health inequalities: a bibliometric analysis (1966–2014). *Soc Sci Med*. 2015;141:100–8.
- Spinakis A, Anastasiou G, Panousis V, Spiliopoulos K, Palaiologou S, Yfantopoulos J, et al. Expert review and proposals for measurement of health inequalities in the European Union: full report. 2011. https://ec.europa.eu/health/sites/health/files/social_determinants/docs/sum_quantos_en.pdf. Accessed 4 Feb 2020.
- Mathers CD, Murray CJ, Ezzati M, Gakidou E, Salomon JA, Stein C. Population health metrics: crucial inputs to the development of evidence for health policy. *Popul Health Metr*. 2003;1:6.
- European Commission. Health Inequalities in the EU. Final Report of a Consortium. Consortium Lead: Sir Michael Marmot. 2013. Brussels: European Commission Directorate-General for Health and Consumers. <https://op.europa.eu/en/publication-detail/-/publication/e3d84056-2c24-4bd3-92db-cb71a0d0bc4/language-en>. Accessed 20 May 2019.
- Mackenbach J. Health inequalities: Europe in Profile. Rotterdam; 2006. <https://gateway.euro.who.int/en/health-inequalities-europe-in-profile/>. Accessed 4 Feb 2020.
- European Commission. Commission Staff Working Document. Report on health inequalities in the European Union (SWD(2013) 328 final). 2013. Brussels: Commission of the European Communities. https://ec.europa.eu/health/social_determinants/overview_en. Accessed 20 May 2019.
- Marmot M. Social determinants of health inequalities. *Lancet*. 2005; 365(9464):1099–104.
- Santana P, Freitas A, Costa C, Vaz A. Evaluating population health: the selection of main dimensions and indicators through a participatory approach. *Eur J Geogr*. 2015;6(1):51–63.
- Freitas A, Santana P, Oliveira MD, Almendra R, Bana Costa JC, Bana Costa CA. Indicators for evaluating European population health: a Delphi selection process. *BMC Public Health*. 2018;18:557.
- Kindig D, Booske B, Remington PL. Mobilizing Action Toward Community Health (MATCH): metrics, incentives, and partnerships for population health. *Prev Chronic Dis*. 2010;7(4):A68.
- Braveman PA. Monitoring equity in health and healthcare: a conceptual framework. *J Health Popul Nutr*. 2003;21(3):181–92.
- Carr-Hill R, Chalmers-Dixon P. In: Lin J, editor. The public health observatory handbook of health inequalities measurement; 2005. <http://nccd.hk.ca/resources/entry/the-public-health-observatory-handbook-of-health-inequalities-measurement>. Accessed 4 Feb 2020.
- Braveman P. What are health disparities and health equity? We need to be clear. *Public Health Rep*. 2014;129(Suppl. 2):5–8.
- Whitehead M. The concepts and principles of equity and health. *Int J Health Serv*. 1992;22(3):429–45.
- Marmot M. Report on social determinants of health and the health divide in the WHO European region. Updated reprint 2014. Copenhagen: WHO Regional Office; 2013.
- Kickbusch I. The contribution of the World Health Organization to a new public health and health promotion. *Am J Public Health*. 2003;93(3):383–8.
- Whitehead M, Dahlgren G. Concepts and principles for tackling social inequities in health: levelling up part 1. Copenhagen: WHO Regional Office for Europe; 2006.
- Dahlgren G, Whitehead M. European strategies for tackling social inequities in health: levelling up part 2. Copenhagen: WHO Regional Office for Europe; 2006.
- Etches V, Frank J, Di Ruggiero E, Manuel D. Measuring population health: a review of indicators. *Annu Rev Public Health*. 2006;27:29–55.
- Webster P, Sanderson D. Healthy cities indicators—a suitable instrument to measure health? *J Urban Health*. 2013;90(Suppl. 1):52–61.
- World Health Organization. Health in all policies. Helsinki statement framework for country action. Geneva: WHO; 2014.
- World Health Organization. Declaration of Alma-Ata international conference on primary health care. Geneva: WHO; 1978.
- World Health Organization. The Ottawa charter for health promotion. Geneva and Ottawa: WHO and Canadian Public Health Association, Health and Welfare; 1986.

30. Busse R, Figueras J, Holland W, Le Grand J, Mckee M, Mossialos E, et al. Measuring and tackling health inequalities across Europe. *Eurohealth*. 2009; 15(3) <http://www.lse.ac.uk/lse-health/assets/documents/eurohealth/issues/eurohealth-v15n3.pdf>. Accessed 4 Feb 2020.
31. Kindig D. Understanding population health terminology. *Milbank Q*. 2007; 85(1):139–61.
32. Santana P (Coordination). Promoting population health and equity in Europe: from evidence to policy. Coimbra: University of Coimbra; 2017.
33. Costa C, Santana P, Dimitroulopoulou S, Burstrom B, Borrell C, Schweikart J, Dzurowa D, Zangarini N, Katsouyanni K, Debosere P, Freitas A, Mitsakou C, Samoli E, Vardoulakis S, Mari-Dell’Olimo M, Gotsens M, Lustigova M, Corman D, Costa G. Population Health Inequalities Across and Within European Metropolitan Areas through the Lens of the EURO-HEALTHY Population Health Index. *International Journal of Environmental Research and Public Health*. 2019;16 (5):836.
34. Moniz AB. Scenario-building methods as a tool for policy analysis. Innovative comparative methods for policy analysis. Boston: Kluwer Academic Publishers; 2006. p. 185–209.
35. Bana e Costa C, Correia P, Freitas L, Oliveira M, Rodrigues T, Vieira A. Devising and testing a novel methodology for the evaluation of policies under European population health scenarios. Santana P (Coord), editor. Promoting population health and equity in Europe: From evidence to policy. Coimbra: University of Coimbra; 2017. 85–87.
36. Volkery A, Ribeiro T. Scenario planning in public policy: understanding use, impacts and the role of institutional context factors. *Technol Forecast Soc Chang*. 2009;76:1198–207.
37. Cromley EK, McLafferty S. GIS and public health. New York: The Guilford Press; 2012. p. 503.
38. Bana e Costa CA, De Corte J-M, Vansnick J-C. MACBETH. *Int J Inf Technol Decis Mak*. 2012;11(2):359–87.
39. Bana e Costa C, Freitas L, Oliveira M, Rodrigues T, Vieira A. Using the MACBETH socio-technical methodological approach to build the EURO-HEALTHY PHI. In: Santana P, editor. Promoting population health and equity in Europe: from evidence to policy. Coimbra: Coimbra University Press; 2017.
40. Santana P, Costa C, Freitas A, Stefanik I, Quintal C, Bana e Costa C. Atlas of population health in European Union regions. Coimbra: Coimbra University Press; 2017. p. 263.
41. Goodwin P, Wright G. Enhancing strategy evaluation in scenario planning: a role for decision analysis. *J Manag Stud*. 2001;38(1):1–16.
42. Alvarenga A, Bana e Costa C, Freitas L, Oliveira M, Lopes Santos M, Rodrigues T, et al. Building the EURO-HEALTHY scenarios to understand which driving forces may play a role in the evolution of population health inequalities in Europe. In: Santana P, editor. Promoting population health and equity in Europe: from evidence to policy. Coimbra: University of Coimbra; 2017. p. 88–94.
43. Alvarenga A, Bana e Costa CA, Borrell C, Ferreira PL, Freitas A, Freitas L, et al. Scenarios for population health inequalities in 2030 in Europe: the EURO-HEALTHY project experience. *Int J Equity Health*. 2019;18(1):100.
44. Kindig D, Stoddart G. What is population health? *Am J Public Health*. 2003; 93(3):380–3.
45. Pilot E, Corman D, Doreleijers S, Ledoux C, Burstrom B, Michelsen K, et al. European Structural and Investment Funds – a tool with potential to reduce health inequity in Europe? In: Santana P, editor. Promoting population health and equity in Europe: from evidence to policy. Coimbra: Coimbra University Press; 2017.
46. Bana e Costa C, Oliveira M, Vieira A. Decision support for multicriteria modelling of the population health index and evaluation, foresight and selection of policies. In: Santana P, editor. Promoting population health and equity in Europe: from evidence to policy. Coimbra: Coimbra University Press; 2017.
47. Ogilvy J, Schwartz P. Plotting your scenarios. Emeryville: Global Business Network; 2004.
48. Costa C, Freitas A, Stefanik I, Krafft T, Pilot E, Morrison J, et al. Evaluation of data availability on population health indicators at the regional level across the European Union. *Popul Health Metr*. 2019;17:11.
49. Braveman P. Monitoring equity in health: a policy-oriented approach in low- and middle-income countries. (WHO/CHS/HSS/98.1). Geneva: WHO; 1998.
50. Gatrell AC, Bailey TC. Interactive spatial data analysis in medical geography. *Soc Sci Med*. 1996;42(6):843–55.
51. Barrett FA. Finke’s 1792 map of human diseases: the first world disease map? *Soc Sci Med*. 2000;50(7–8):915–21.
52. Musa GJ, Chiang P-H, Sylk T, Bavley R, Keating W, Lakew B, et al. Use of GIS mapping as a public health tool—from cholera to cancer. *Health Serv Insights*. 2013;6:111–6.
53. Maantay JA, Maroko AR, Herrmann C. Mapping population distribution in the urban environment: the Cadastral-based Expert Dasymmetric System (CEDS). *Cartogr Geogr Inf Sci*. 2007;34(2):77–102.
54. Shaw NT. Geographical information systems and health: current state and future directions. *Health Inf Res*. 2012;18(2):88–96.
55. Fradelos EC, Papathanasiou IV, Mitsi D, Tsaras K, Kleisariis CF, Kourkouta L. Health based geographic information systems (GIS) and their applications. *Acta Inform Med*. 2014;22(6):402–5.
56. Stefanik I, Freitas A, Doetsch J, Santana P. Involving Key Stakeholders in the EURO-HEALTHY. In: Santana P, editor. Promoting Population Health and Equity in Europe: From Evidence to Policy. Coimbra: Coimbra University Press; 2017.
57. Baum F, Lawless A, Delany T, Macdougall C, Williams C, Broderick D, et al. Evaluation of health in all policies: concept, theory and application. *Health Promot Int*. 2014;29(Suppl. 1):i130–42.
58. Goodman MS, Thompson VLS. The science of stakeholder engagement in research: classification, implementation, and evaluation. *Soc Behav Med*. 2017;7:486–91.
59. World Health Organization. Action plan to strengthen the use of evidence, information and research for policy-making in the WHO European region. Regional Committee for Europe 66th session. Copenhagen: WHO Regional Office for Europe; 2016.

Publisher’s Note

Springer Nature remains neutral with regard to jurisdictional claims in published maps and institutional affiliations.

Ready to submit your research? Choose BMC and benefit from:

- fast, convenient online submission
- thorough peer review by experienced researchers in your field
- rapid publication on acceptance
- support for research data, including large and complex data types
- gold Open Access which fosters wider collaboration and increased citations
- maximum visibility for your research: over 100M website views per year

At BMC, research is always in progress.

Learn more biomedcentral.com/submissions

