



The last Maramureş old-growth fir-beech forests: a long-term and global study for their better understanding, conservation and management

Vanessa Py, Marie-Claude Bal, Antoine Brin, Cécile Brun, Stina Burri, Sandrine Buscaino, Carine Calastrenc, Mihaela Danu, Sylvie Guillerme, Sylvie Ladet, et al.

► To cite this version:

Vanessa Py, Marie-Claude Bal, Antoine Brin, Cécile Brun, Stina Burri, et al.. The last Maramureş old-growth fir-beech forests: a long-term and global study for their better understanding, conservation and management. 5T.ERA: 5Terre Environmental Resource Archaeology, May 2019, Genova, Italy. 68 p. hal-02790665

HAL Id: hal-02790665

<https://hal.inrae.fr/hal-02790665>

Submitted on 5 Jun 2020

HAL is a multi-disciplinary open access archive for the deposit and dissemination of scientific research documents, whether they are published or not. The documents may come from teaching and research institutions in France or abroad, or from public or private research centers.

L'archive ouverte pluridisciplinaire **HAL**, est destinée au dépôt et à la diffusion de documents scientifiques de niveau recherche, publiés ou non, émanant des établissements d'enseignement et de recherche français ou étrangers, des laboratoires publics ou privés.



V. Py-Saragaglia &

M. Bal, A. Brin, C. Brun, L. Burnel, S. Burri, S. Buscaino, C. Calastrenc, M. Danu, S. Guillaume, S. Ladet, L. Larrieu, G. Le Roux, E. Maire, M. Mindrescu, A. Petras, M. Philippe, N. Poirier, M. Roy, M. Saulnier, F. de Vleeschouwer

5T.ERA meeting - Genoa 23-24 May 2019



The last Maramureş old-growth fir-beech forests:
a long-term and global study for their better
understanding, conservation and management

OASIC PROJECT: FORETEXIL



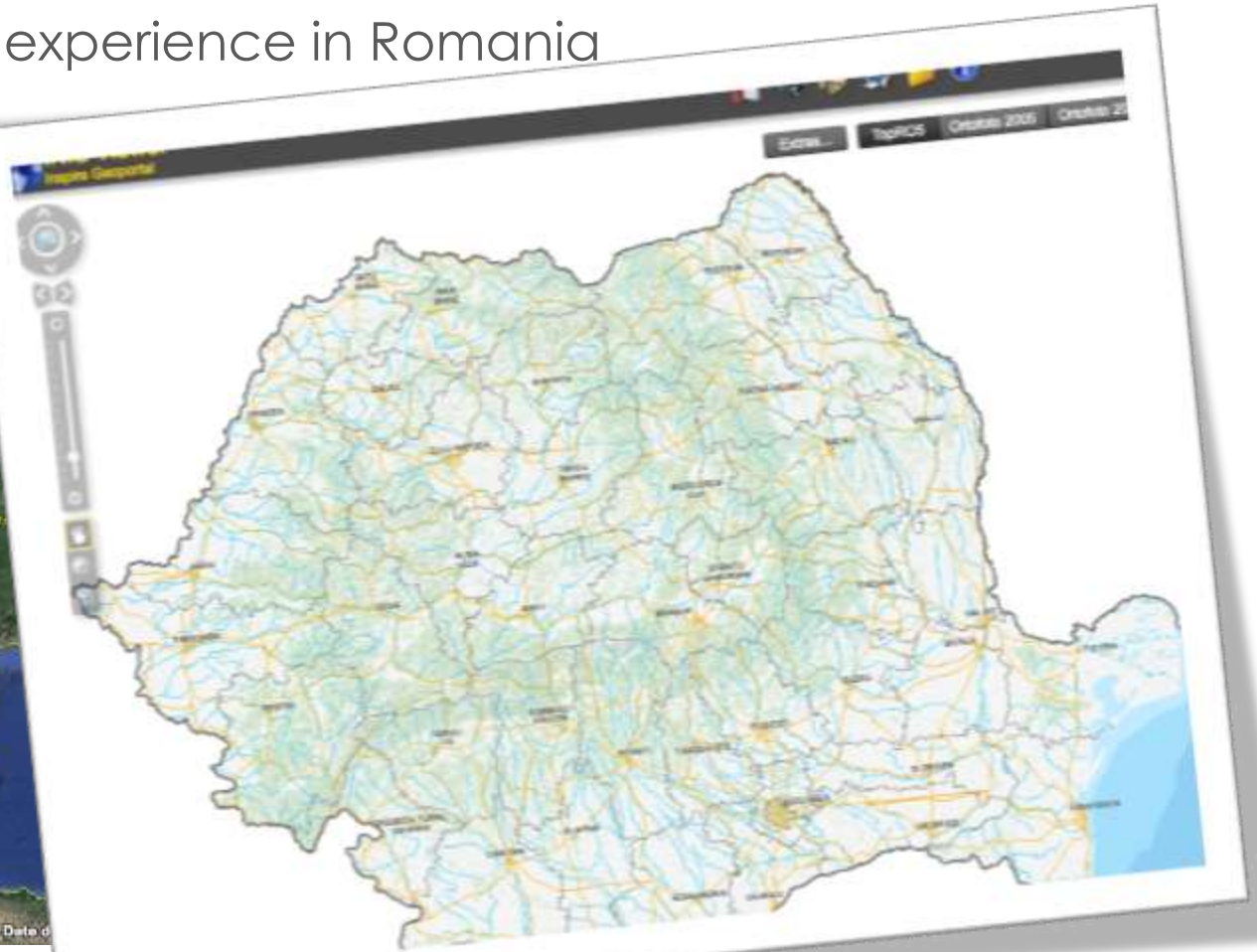
■ A French experience in Romania (Eastern Carpathians)



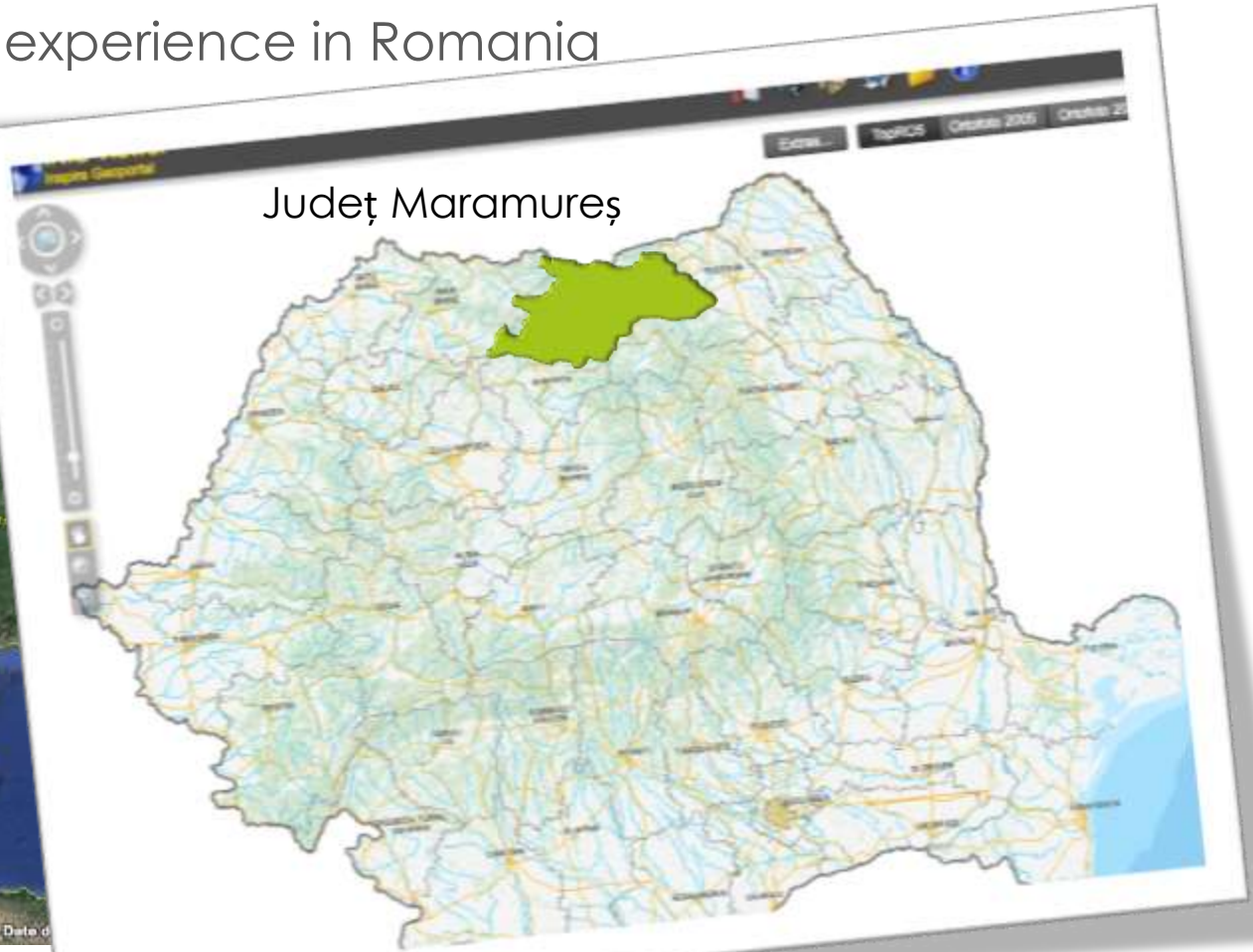
■ A French experience in Romania (Eastern Carpathians)



■ A French experience in Romania



■ A French experience in Romania



□ A specific rural landscape: **the « subnatural forest »**



Băiuț forest © V. Py



The ecological movie: « Mononoko Princess »



Forêt de Yakushima

What is a "subnatural" or "old-growth forest"?

« *vieille forêt* » in French, « *foresta vetusta* » in Italian

What is a "subnatural" or "old-growth forest"?

« *vieille forêt* » in French, « *vecchia foresta* » in Italian

❑ **Never or very little exploited**

What is a "subnatural" or "old-growth forest"?

« *vieille forêt* » in French, « *vecchia foresta* » in Italian

- ❑ Never or very little exploited
- ❑ **A long period without anthropogenic disturbance**

What is a "subnatural" or "old-growth forest"?

« *vieille forêt* » in French, « *vecchia foresta* » in Italian

- ❑ Never or very little exploited

- ❑ **A long period without anthropogenic disturbance**

-> an ancientness of several centuries

What is a "subnatural" or "old-growth forest"?

« *vieille forêt* » in French, « *vecchia foresta* » in Italian

- ❑ Never or very little exploited
- ❑ A long period without anthropogenic disturbance
- ❑ **A high maturity**
 - > many large living trees
 - > old living trees
 - > many types of TreMs (Tree related microhabitats)
 - > high volume of dead wood (different states of decomposition)

TreMs examples



Nest of vertebrate © L. Larrieu



Black woodpecker feeding cavities © L. Larrieu

What is a "subnatural" or "old-growth forest"?

« *vieille forêt* » in French, « *vecchia foresta* » in Italian

- ❑ Never or very little exploited
- ❑ A long period without anthropogenic disturbance
- ❑ A high maturity
- ❑ **A high biodiversity**

What is a "subnatural" or "old-growth forest"?

« *vieille forêt* » in French, « *vecchia foresta* » in Italian

- ❑ Never or very little exploited
- ❑ A long period without anthropogenic disturbance
- ❑ A high maturity
- ❑ A high biodiversity
- ❑ **Stands dominated by *dryades***

What is a "subnatural" or "old-growth forest"?

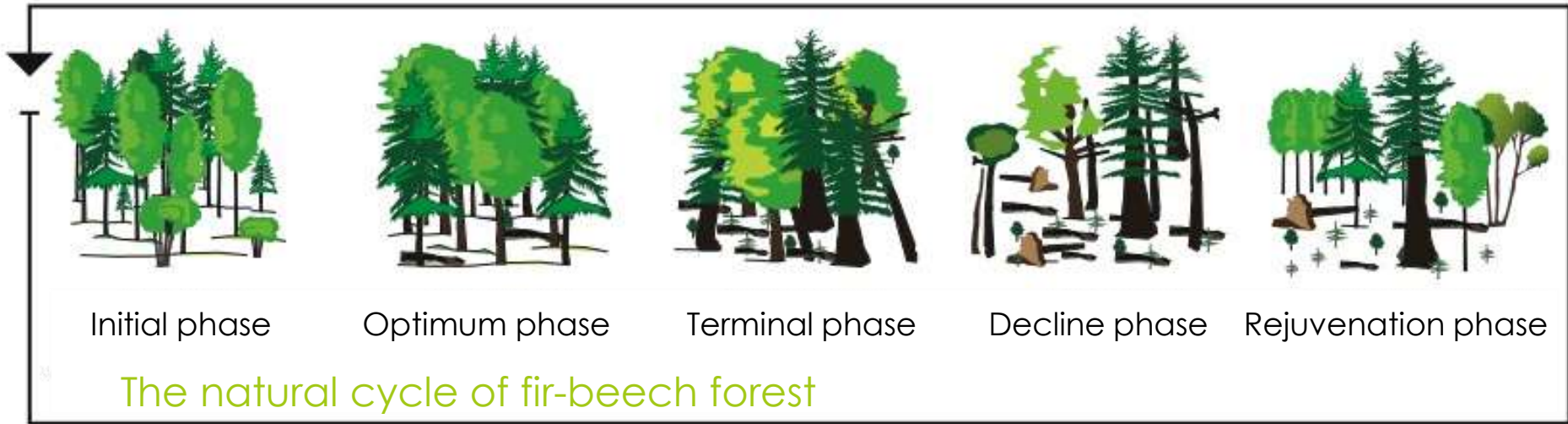
« *vieille forêt* » in French, « *vecchia foresta* » in Italian

- ❑ Never or very little exploited
- ❑ A long period without anthropogenic disturbance
- ❑ A high maturity
- ❑ A high biodiversity
- ❑ Stands dominated by *dryades*
- ❑ **Heterogeneity of the vertical structure**

Old-growth forest (OGF)

⇒ A concept defined by ecologists

⇒ A definition excluding human uses/practices



OGF: a key role facing global change

❑ **Carbon storage**

OGF: a key role facing global change

- Carbon storage

- **CO₂ fixing**

OGF: a key role facing global change

- Carbon storage

- CO₂ fixing

- **Species and intraspecific genetic diversity**

OGF: a key role facing global change

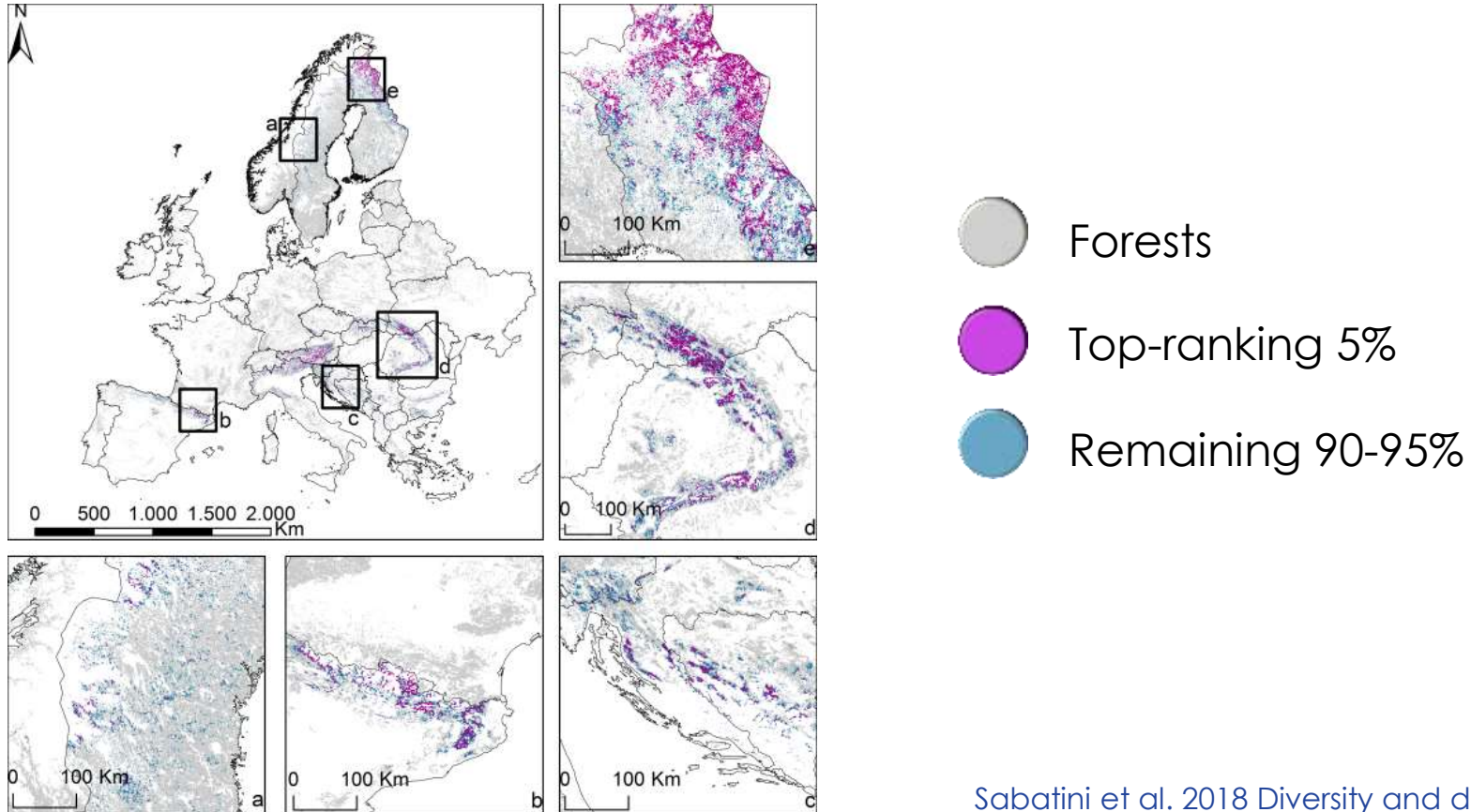
- ❑ Carbon storage
- ❑ CO₂ fixing
- ❑ Species and intraspecific genetic diversity
- ❑ **Reservoir of biodiversity**

OGF: a key role facing global change

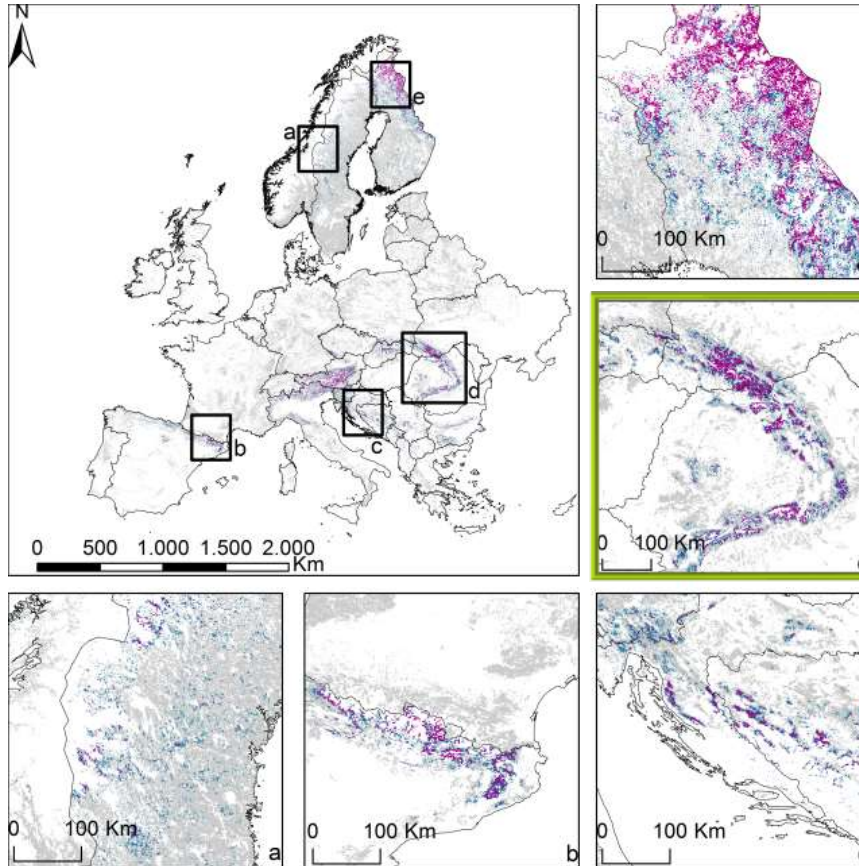
- ❑ Carbon storage
- ❑ CO₂ fixing
- ❑ Species and intraspecific genetic diversity
- ❑ Reservoir of biodiversity

!! But underestimated ecosystem goods and services !!

OGF: less than 1% of European forest



OGF: less than 1% of European forest

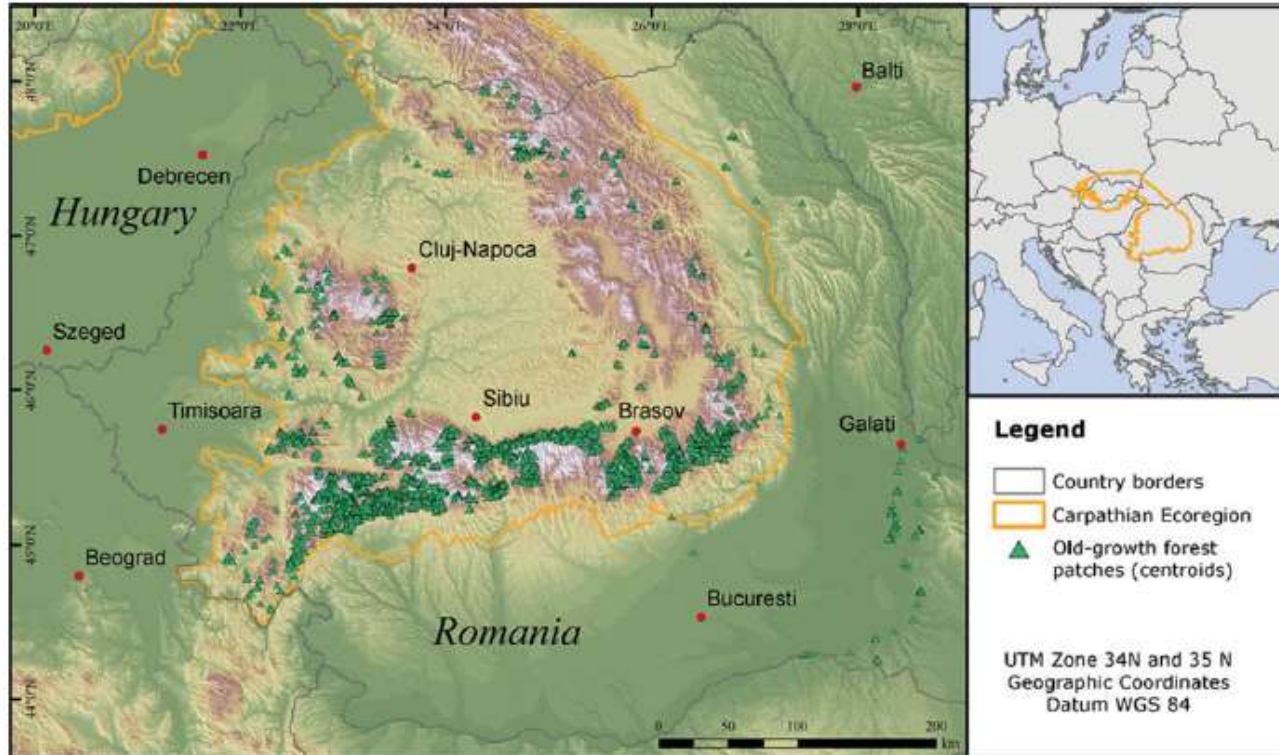


- Forests
- Top-ranking 5%
- Remaining 90-95%

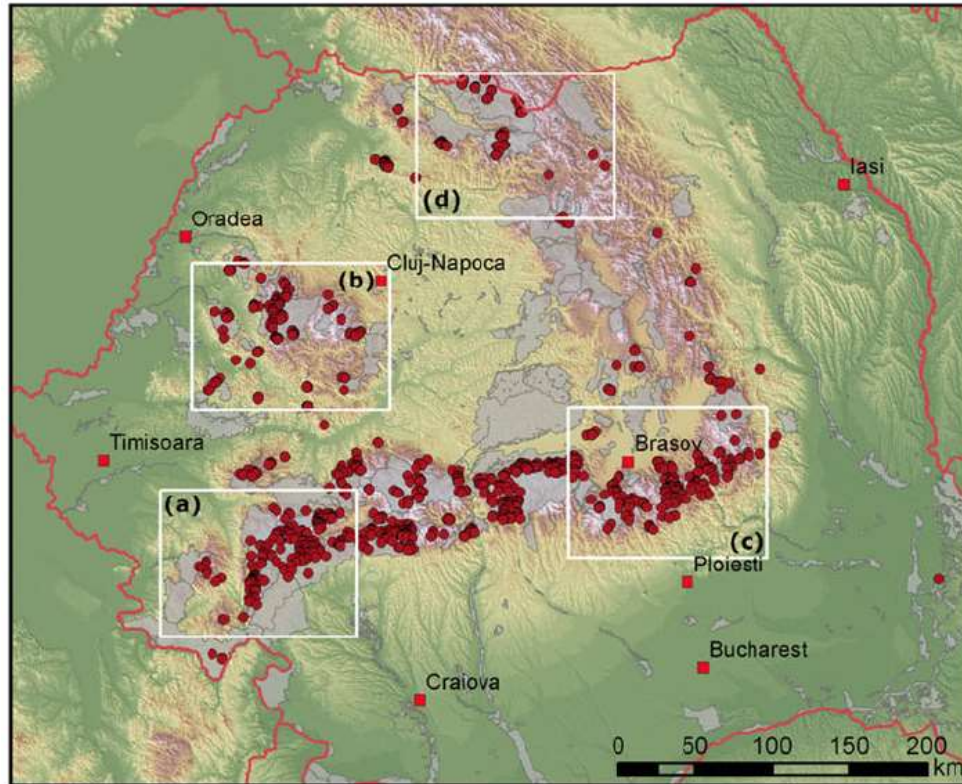
Romanian Carpathians

OGF: a relict and vulnerable landscape

2 millions ha in the 19th c. -> less than 200 000 ha today



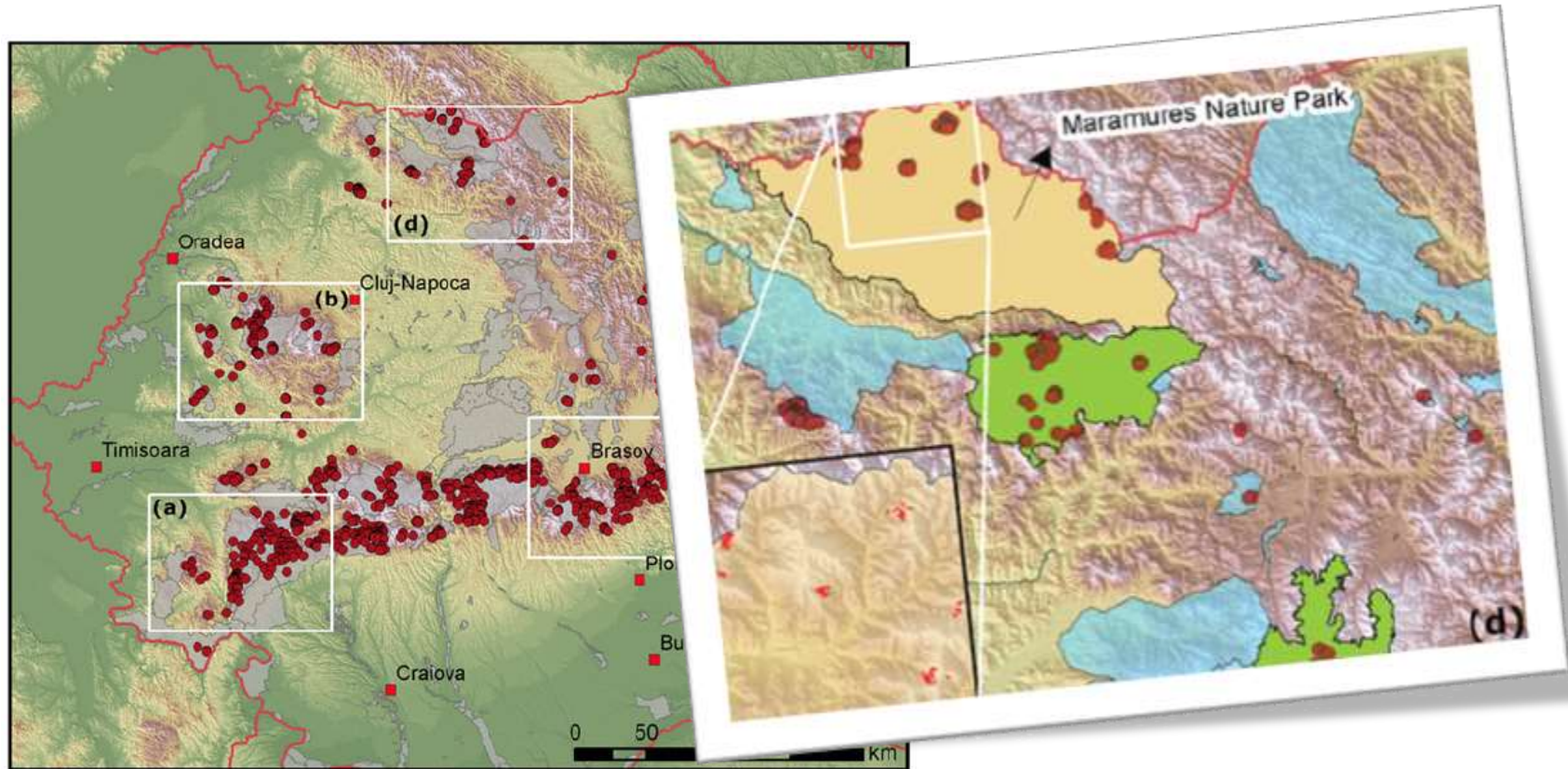
Industrial forestry exploitation and illegal logging



● Old growth forest disturbances

■ Protected area

Industrial forestry exploitation and illegal logging



Industrial forestry exploitation and illegal logging



<https://www.dailymotion.com/video/x59qar9>

■ Maramureș County: an “archaic ethnographic zone”

Rey et al. 2002



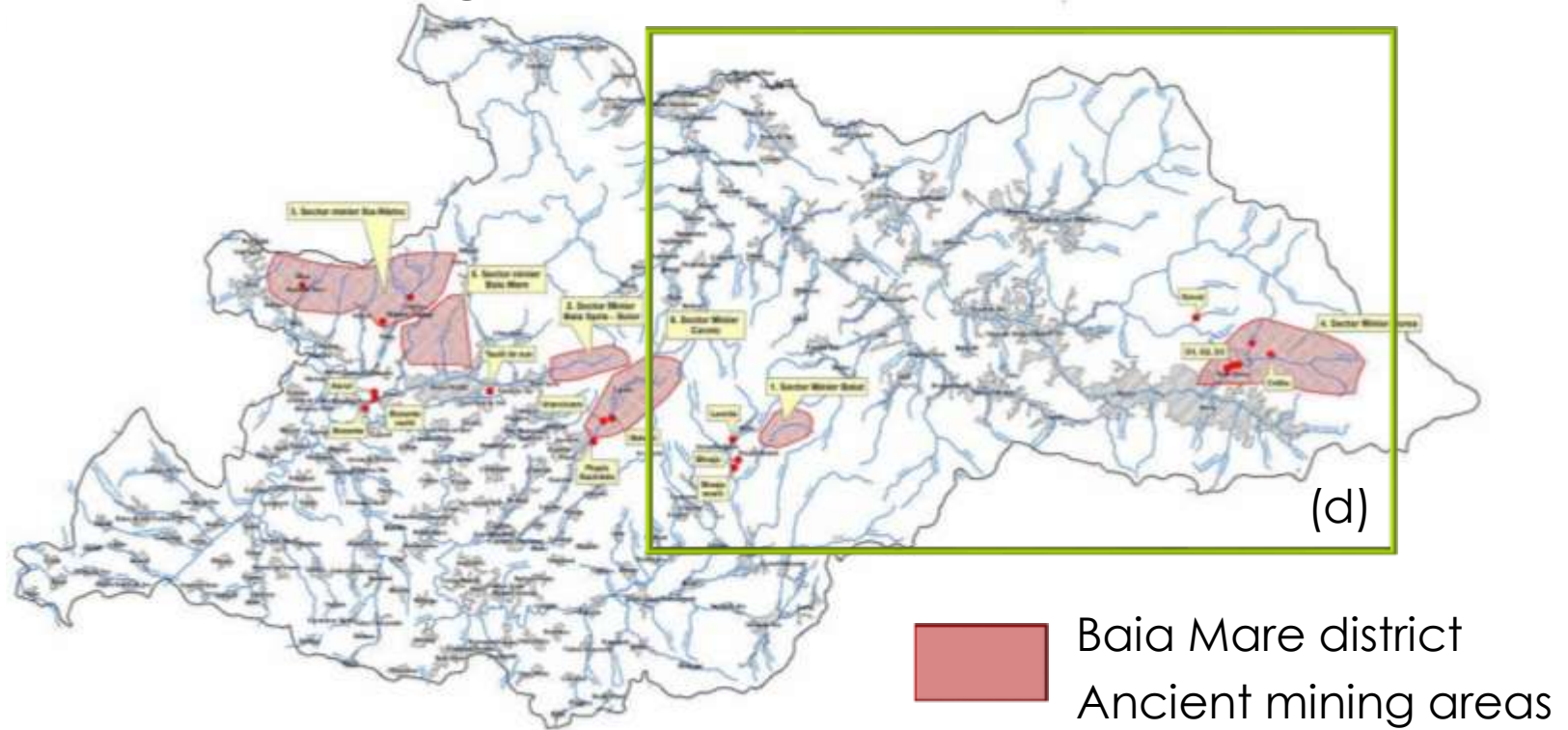
Agroforestry landscape © S. Guillerme



Wooden architecture © S. Guillerme

■ Maramureș County: an important mining district

PbS, Fe, ZnS, Cu, Ag, Au etc.



■ Maramureș County: an important mining district



Băiuț mining area © V. Py



Ruined industrial building © V. Py

■ Maramureș County: an important mining district



Băiuț mining area – mine waste heaps © V. Py

- Maramureș County has the last primeval beech forest!



Unesco World Heritage from July 2017: « The area is made entirely out of beech forests and represents one of the most unique primeval forests of the Romanian Eastern Carpathians »

- Is it possible to have a “primeval forest” at the heart of a mining area?

Primeval forest: large forest area constituted from the last deglaciation and never exploited or disturbed by human

- Is it possible to have a “primeval forest” at the heart of a mining area?
- ✓ If so, why and how is it possible?
- ✓ If no, what is Strambu Băiuț?

- Is it possible to have a “primeval forest” at the heart of a mining area?
- ✓ If so, why and how is it possible?
- ✓ If no, what is Strambu Băiuț? What is its degree of maturity, diversity, ancientness, long-term dynamic, resilience capacity?

■ Is it possible to have a “primeval forest” at the heart of a mining area?

✓ If so, why and how is it possible?

✓ If no, what is Strambu Băiuț?

✓ If no, what are and were human practices and uses?

- Is it possible to have a “primeval forest” at the heart of a mining area?
- ✓ If so, why and how is it possible?
- ✓ If no, what is Strambu Băiuț?
- ✓ If no, what are and were human practices and uses?
- ✓ If no, is there an antagonism between biological diversity, its conservation and human practices ?

■ Retro-observation: historical & paleo- ecology



- ✓ Multiproxy study of peat bog
- ✓ Soil charcoal analysis
- ✓ Archaeology and LiDAR
- ✓ Charcoal kiln analysis

■ Retro-observation: historical & paleo- ecology



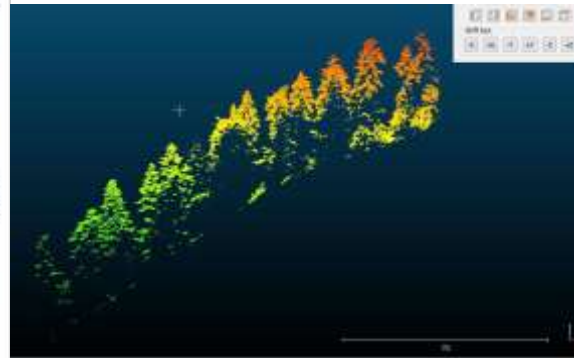
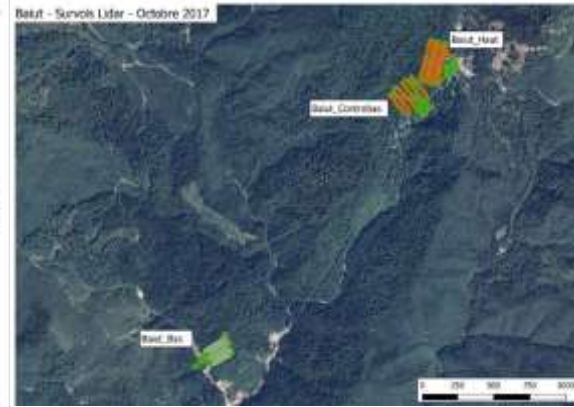
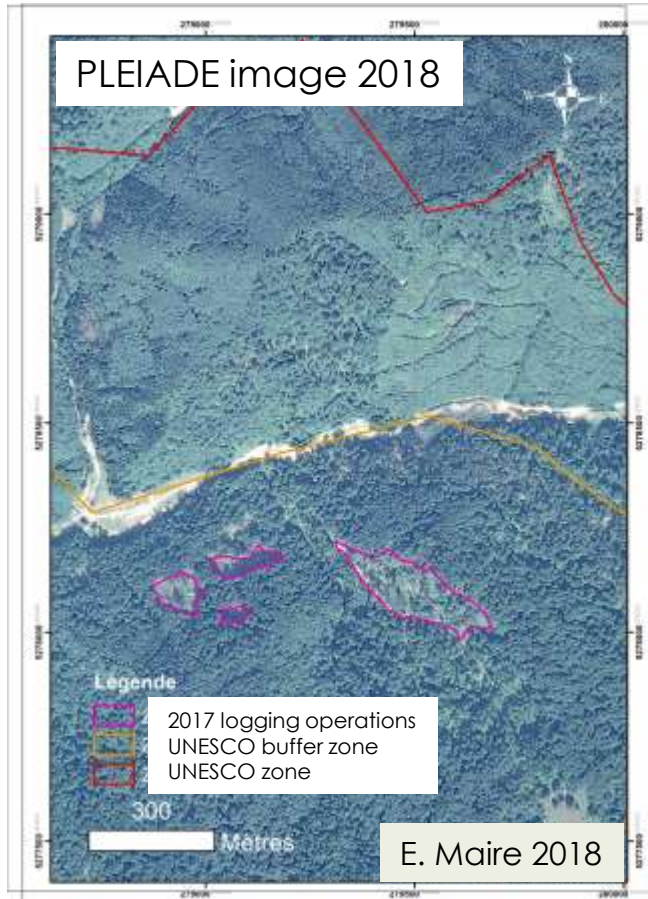
- ✓ Multiproxy study of peat bog
- ✓ Soil charcoal analysis
- ✓ Archaeology and LiDAR
- ✓ Charcoal kiln analysis
- ✓ Texts and maps study

■ Observation: ecology & social geography



Forest ecology, dendrochronology, biogeochemistry, soil DNA analysis, social inquiries

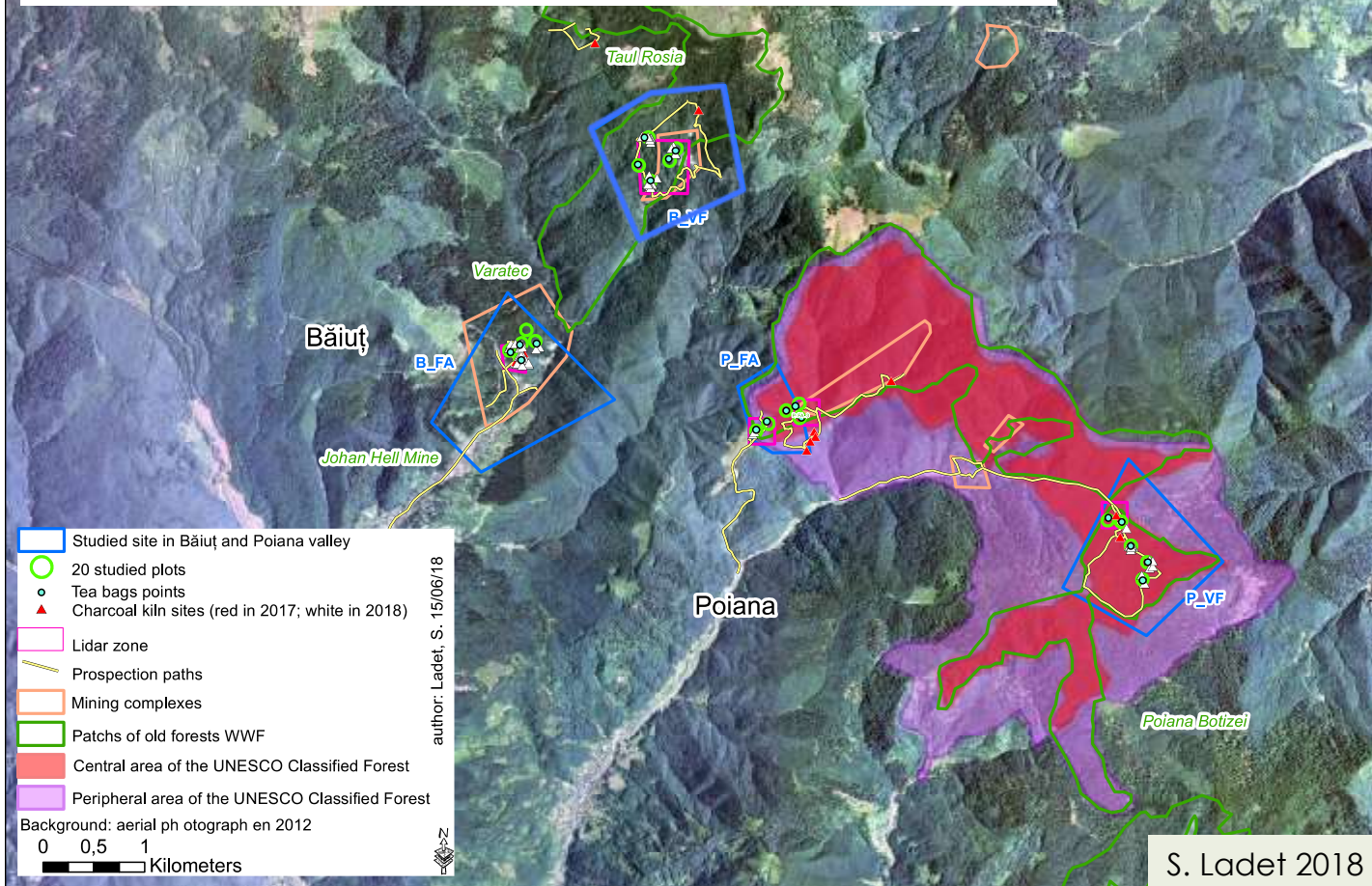
■ Observation: high resolution satellite imagery and LiDAR



- ✓ Deforestation control
- ✓ Forest structure
- ✓ Structural components of biodiversity

C. Calastrenc & N. Poirier 2017

Study area: 2 valleys Băiuț and Poiana Botizii



Peat bogs / 2 sites

NomPoint	XUTM35N	YUTM35N	SrcFile	Mission	Commentaire
Petite tourbière	276144,121	5282961,57	Taul_Rosia	oct-17	sondage prélèvement core 1 TM (carotte 1)
Grande tourbière	276209,244	5282852,47	Taul_Rosia	oct-17	sondage core 2 TG (carotte 2)

PetiteTourbière

GrandeTourbière

+ PointsGPS_Tourbiere_TaulRosia_UTM35

Chemin de prospection

Vieilles forêts WWF

Fond de carte: photographie aérienne de 2012

0 50 100

Mètres

S. Ladet 2018



Managed forest (MF)

OGF

● 1 ha plot

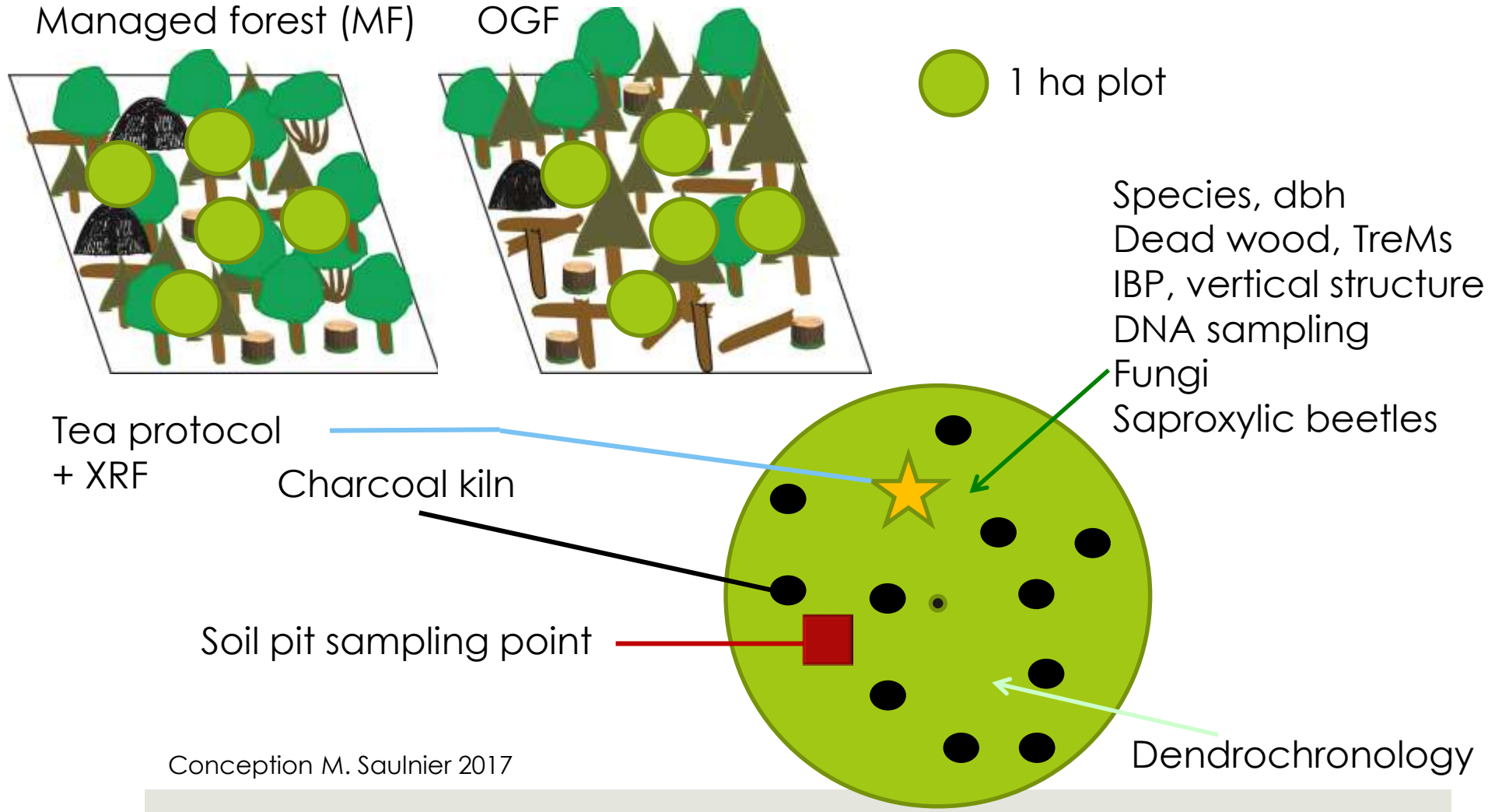
Species, dbh
Dead wood, TreMs
IBP, vertical structure
DNA sampling
Fungi
Saproxylic beetles

Tea protocol
+ XRF

Charcoal kiln

Soil pit sampling point

Dendrochronology



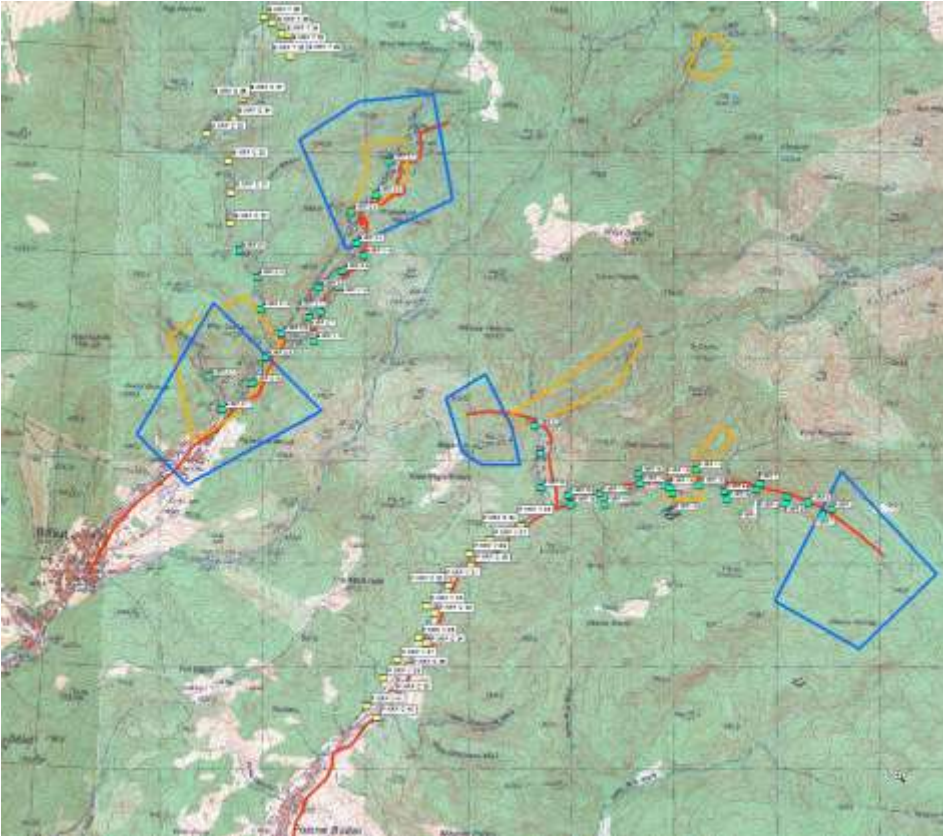
Forests are considered in a broader land use system

About 40 interviews with local population and main stakeholders



© S. Guillerme

2 XRF Transects for measuring heavy metal pollution

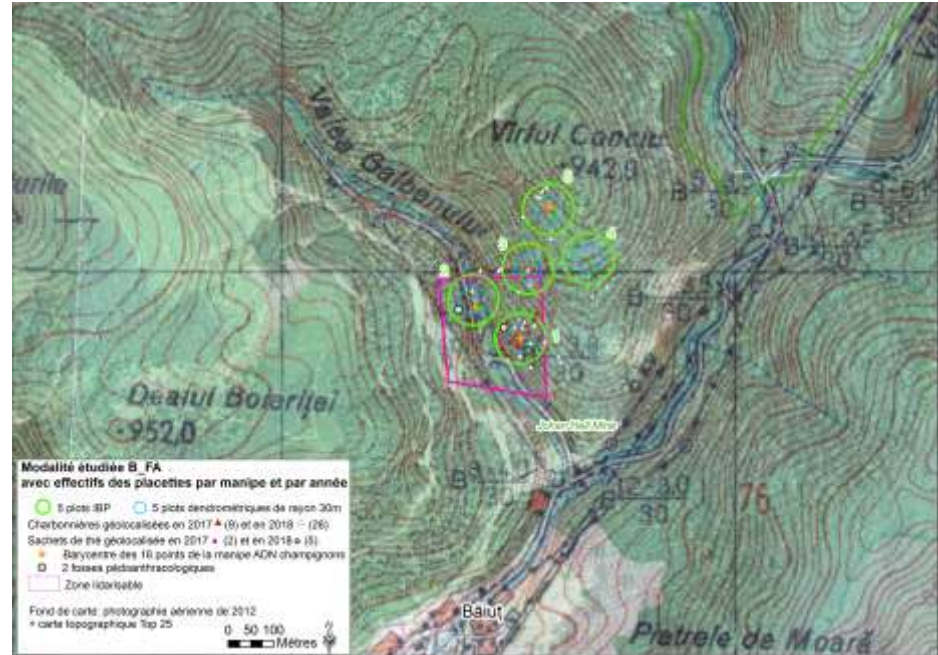


3 measures per point

-> alluvium

-> soil horizon A within forest

- All forest sites and types are/were managed and used



Charcoal manufacturing in the modern times until the 19-20th c.

■ All forest sites and types are/were managed and used

Up to 16 charcoal kilns/ha



Charcoal manufacturing in the modern times until the 19-20th c.

■ All forest sites and types are/were managed and used



Wastes of logging operations with different saproxilation stages

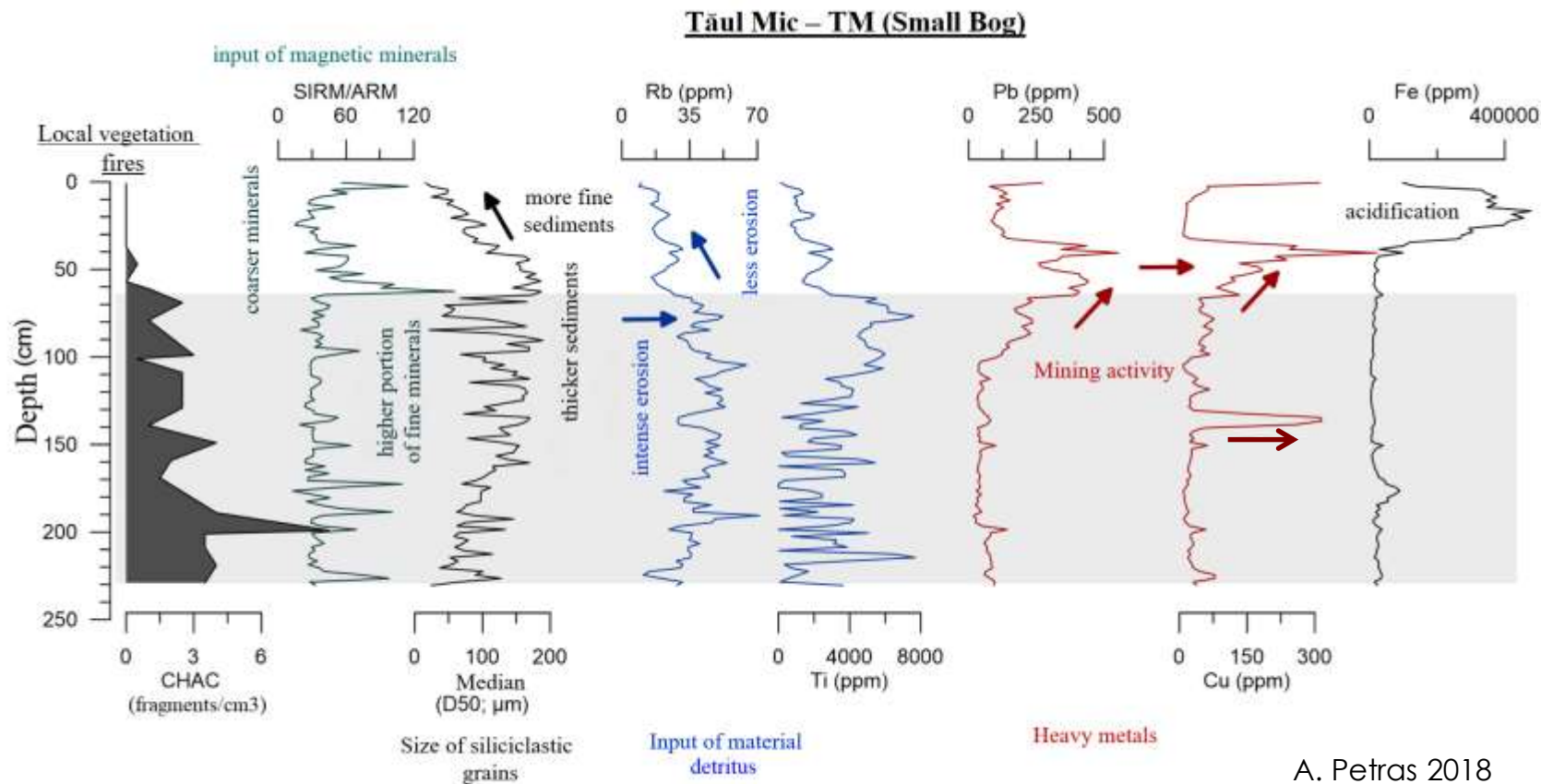
■ All forest sites and types are/were managed and used



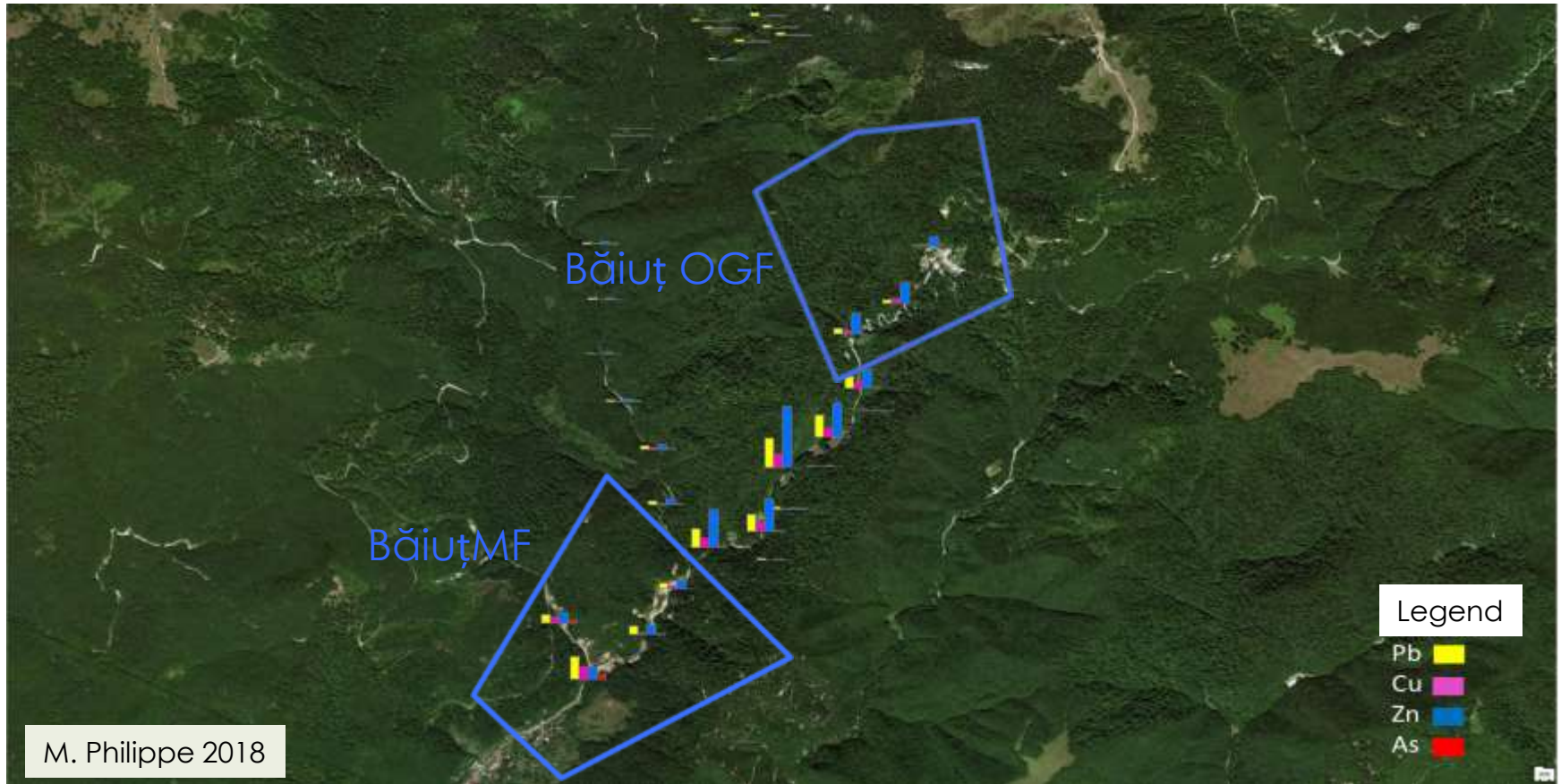
« Fitting notchs »

- ✓ To test the quality of wood
- ✓ Selective timber extraction

■ A plurisecular exploitation?



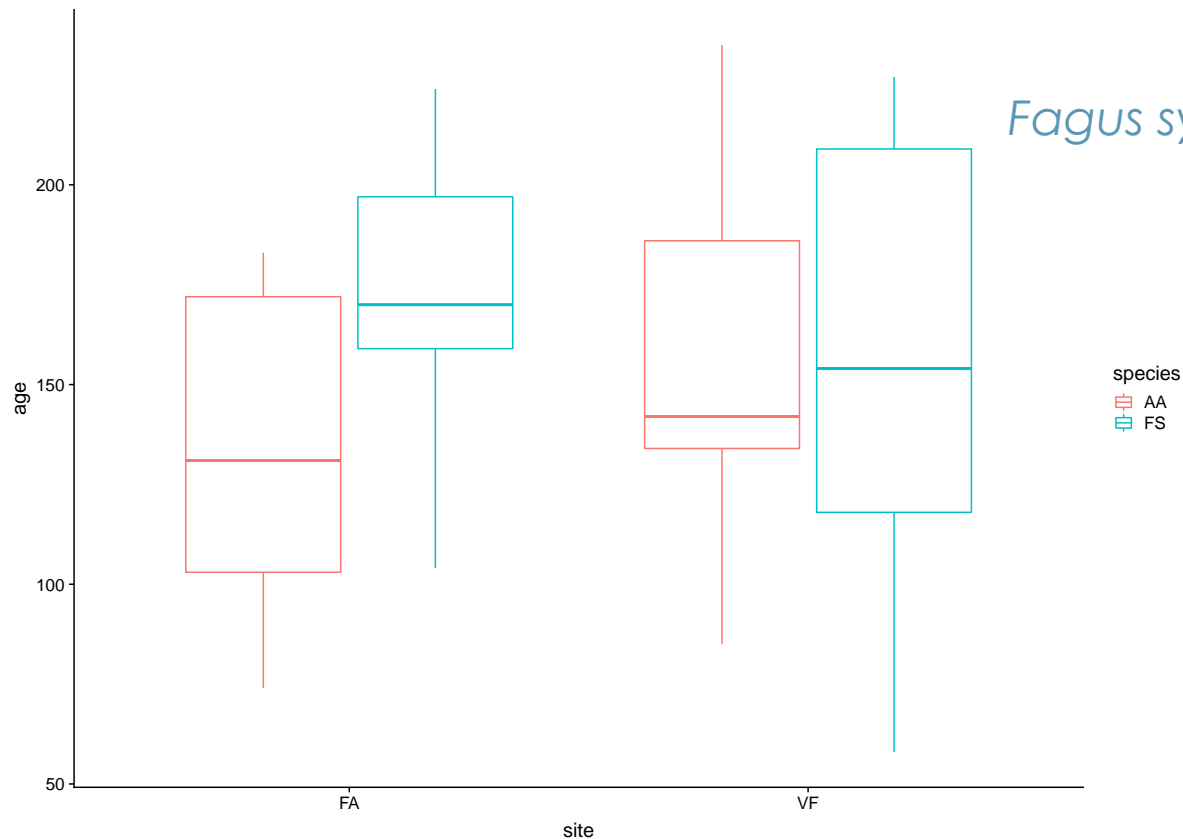
XRF Băiuț: environmental contamination by heavy metals



■ Not very old stands

Abies alba MF: 74 to 183
OGF: 85 to 235

Fagus sylvatica MF: 104 to 224
OGF: 73 to 227



■ But many attributes of maturity

- ✓ Dryades – *Abies alba*, *Fagus sylvatica* (*Picea abies*)
- ✓ Secondary species – *Acer pseudoplatanus*, *Fraxinus excelsior*, *Betula pendula* etc.
- ✓ Dead wood
- ✓ Very large trees (dbh > 100 cm)
- ✓ TreMs

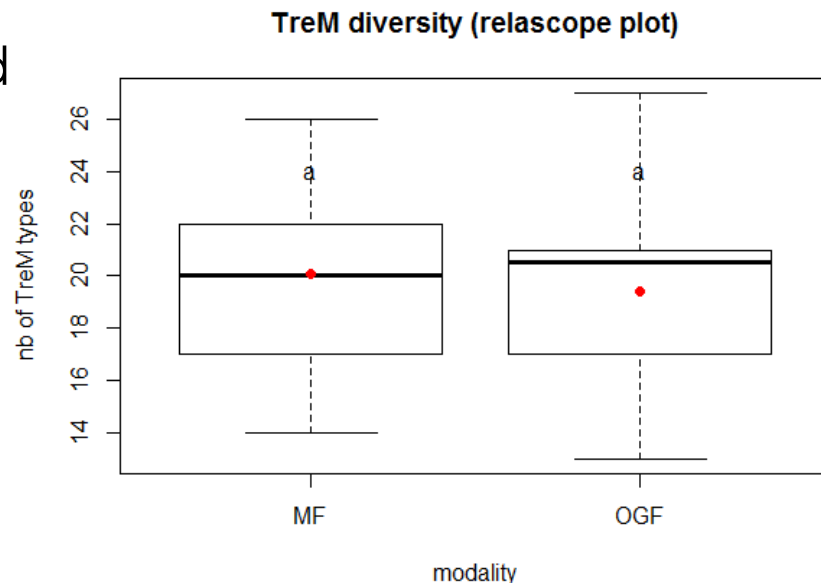
■ **Very ancient wooded areas?**

First pedoanthracological results:

- Continuity of forest ecosystem (from several millennia?)
- Continuity of fir-beech forest
- Anthracomass very low in OGF and very high in MF

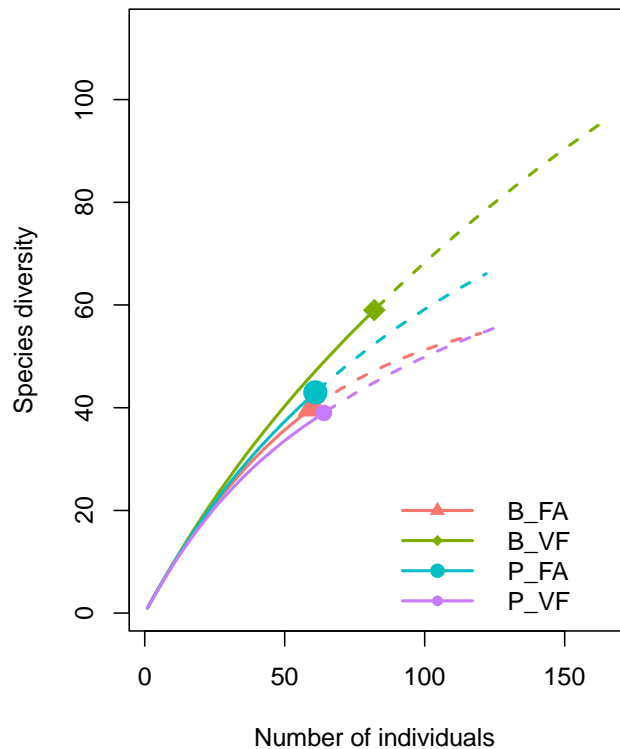
■ No significant differences between AM and OGF

- ✓ Similar vertical structure
- ✓ IBP similar score
- ✓ No more lying dead wood
- ✓ No more TreMs diversity



■ Fungi diversity slightly higher in Băiuț OGF and Poiana MF

Order $q = 0$



+ indicator species of "subnatural forest":

Fomes fomentarius
Phellinus hartigii
Polyporus squamosus
Sparassis nemecii
Hericium flagellum
Climacodon septentrionalis
Fomitopsis pinicola

■ Saproxylic beetles diversity higher in Băiuț MF



4 high-value species
inpn.mnhn.fr

▣ What is Strambu Băiuț?

- ✓ It is not a primary forest
- ✓ It is not a “subnatural” forest
- ✓ It is a “secondary” managed forest but with OGF indicators
- ✓ It is a very ancient forest

▣ What is Strambu Băiuț?

- ✓ It is not a primary forest
- ✓ It is not a “subnatural” forest
- ✓ It is a “secondary” managed forest but with OGF indicators
- ✓ It is a very ancient forest

▣ What is Strambu Băiuț?

- ✓ It is not a primary forest
- ✓ It is not a “subnatural” forest
- ✓ It is a “secondary” managed forest but with OGF indicators
- ✓ It is a very ancient forest

▣ What is Strambu Băiuț?

- ✓ It is not a primary forest
- ✓ It is not a “subnatural” forest
- ✓ It is a “secondary” managed forest but with OGF indicators
- ✓ It is a very ancient forest

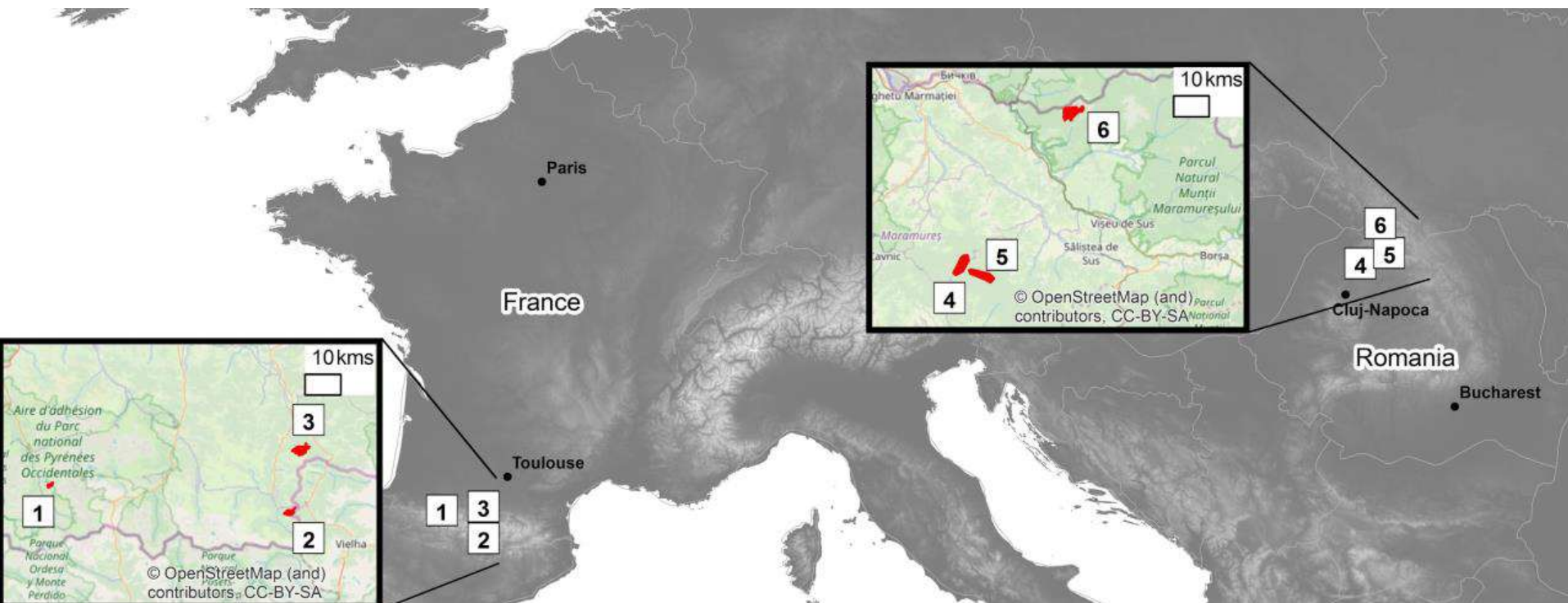
▣ What is Strambu Băiuț?

- ✓ It is not a primary forest
- ✓ It is not a “subnatural” forest
- ✓ It is a “secondary” managed forest but with OGF indicators
- ✓ It is a very ancient forest

=> Towards a new definition of the “subnatural forest” concept

- Is there an antagonism between biological diversity, its conservation and local human practices?
- What are tolerable trajectories for biodiversity conservation?

BENDYS PROJECT



Thank you!

