



**HAL**  
open science

# An estuarine tidescape of production: terrestrial laser scanning of fixed fishing structures and a tide mill in the Léguer Estuary, Brittany

Michael Lobb, Tony Brown, Jules Leyland, Vincent Bernard, Marie-Yvane Daire, Loïc Langouët

## ► To cite this version:

Michael Lobb, Tony Brown, Jules Leyland, Vincent Bernard, Marie-Yvane Daire, et al.. An estuarine tidescape of production: terrestrial laser scanning of fixed fishing structures and a tide mill in the Léguer Estuary, Brittany. *Antiquity*, 2020, 94 (377), pp.1296-1313. 10.15184/aqy.2020.135 . hal-02983981

**HAL Id: hal-02983981**

**<https://univ-rennes.hal.science/hal-02983981>**

Submitted on 4 Jan 2021

**HAL** is a multi-disciplinary open access archive for the deposit and dissemination of scientific research documents, whether they are published or not. The documents may come from teaching and research institutions in France or abroad, or from public or private research centers.

L'archive ouverte pluridisciplinaire **HAL**, est destinée au dépôt et à la diffusion de documents scientifiques de niveau recherche, publiés ou non, émanant des établissements d'enseignement et de recherche français ou étrangers, des laboratoires publics ou privés.

# ANTIQUITY

a review of world archaeology



**CAMBRIDGE**  
UNIVERSITY PRESS

**An estuarine tide-scape of production: terrestrial laser scanning (TLS) of fixed fishing structures and a tidal mill in the Léguer Estuary, Brittany, France**

Journal:	<i>Antiquity</i>
Manuscript ID	Draft
Manuscript Type:	Research
Date Submitted by the Author:	n/a
Complete List of Authors:	Lobb, Michael; Trent & Peak Archaeology , Survey Brown, Antony; University of Southampton, Palaeoenvironmental Laboratory; Universitetet i Tromso Tromso Museum, Natural Sciences Leyland, Julian; University of Southampton, Geography and Environmental Sciences Bernard, Vincent; UMR 6566 CReAAH, Centre de Recherche en Archéologie, Archéosciences, Histoire, Daire, Marie-Yvane; UMR 6566 CReAAH , Centre de Recherche en Archéologie, Archéosciences Langouet, Loic; UMR 6566 CReAAH, Centre de Recherche en Archéologie, Archéosciences, Histoire,
Keywords:	fish weirs, terrestrial laser scanning, tidal mill, estuarine resources, tidal zone excavation
Research Region:	Western Europe

SCHOLARONE™  
Manuscripts

1  
2  
3  
4  
5  
6  
7  
8  
9  
10  
11  
12  
13  
14  
15  
16  
17  
18  
19  
20  
21  
22  
23  
24  
25  
26  
27  
28  
29  
30  
31  
32  
33  
34  
35  
36  
37  
38  
39  
40  
41  
42  
43  
44  
45  
46  
47  
48  
49  
50  
51  
52  
53  
54  
55  
56  
57  
58  
59  
60

# An estuarine tide-scape of production: terrestrial laser scanning (TLS) of fixed fishing structures and a tidal mill in the Léguer Estuary, Brittany, France

Mike Lobb<sup>1,2</sup>, Tony Brown<sup>2</sup>, Jules Leyland<sup>2</sup>, Vincent Bernard<sup>3</sup>, Marie-Yvane Daire<sup>3</sup> and Loïc Langouët<sup>3\*</sup>

<sup>1</sup> Trent & Peak Archaeology, Nottingham, NG9 4AB. [mlobb@yorkat.ac.uk](mailto:mlobb@yorkat.ac.uk)

<sup>2</sup> Geography & Environmental Sciences, University of Southampton, SO17 1BJ UK. [Tony.Brown@soton.ac.uk](mailto:Tony.Brown@soton.ac.uk); [J.Leyland@soton.ac.uk](mailto:J.Leyland@soton.ac.uk);

<sup>3</sup> CReAAH UMR 6566, Centre de Recherche en Archéologie, Archéosciences, 35042 Rennes Cedex – France. [marie-yvane.daire@univ-rennes1.fr](mailto:marie-yvane.daire@univ-rennes1.fr); [vincent.bernard@univ-rennes1.fr](mailto:vincent.bernard@univ-rennes1.fr); [loic.langouet@wanadoo.fr](mailto:loic.langouet@wanadoo.fr)

\*deceased

## Abstract

*Terrestrial Laser Scanning (TLS) provides rapid, highly accurate, surveys of excavations and structures at landscape scales - particularly valuable for tidal environments. Here we use TLS to record the excavation of buried tidal fixed fishing structures, and a tidal mill, within the Léguer Estuary at Le Yaudet. All the early Medieval (6th-8th Century) structures lie within, and exploit different parts of the tidal frame in a comprehensive resource exploitation system. TLS can record and quantify aspects of an estuarine landscape of production associated with seignorial control of environmental resources and offers a step-change in recording fixed fishing and allied structures.*

## Background

Terrestrial laser scanning TLS has been used to record artefacts from waterlogged wooden stakes (Lobb et al., 2010) to complete boats (Tanner 2013), and archaeological structures from Megalithic monuments (Abbott and Anderson-Whymark 2012) to Post-medieval interiors (English Heritage 2011). It has also been used for palaeo-landscapes (Entwistle et al. 2009) and caves - for which it has proven particularly valuable (Zlot and Bosse 2014). However, it has not yet reached its full potential as it can provide highly accurate 3D models which both record excavation and can be used to answer questions of function and context through environmental modelling. We show here how

1  
2  
3 TLS offers a step-change in recording and understanding fixed fishing and allied  
4 structures through in-situ recording, landscape analysis and functional modelling.  
5  
6  
7

8 The inter-tidal environment is particularly challenging for conventional methods of  
9 survey and excavation, but also the most threatened archaeological zone worldwide  
10 (Pontee and Parsons 2010). There are also structures/artefacts typically found in the  
11 coastal zone, such as fixed fishing-structures (or fish weirs, basket racks) and tidal mills,  
12 that have long histories and about which we have very limited knowledge (Jecock  
13 2011). Erosion, or erosion management, of the coastal zone typically exposes these  
14 structures and prompts recording (e.g. Rapid Coastal Zone Surveys in the UK) but rarely  
15 excavation.  
16  
17  
18  
19  
20  
21  
22

23 Fixed fishing-structures (or mass fish capture devices) and tidal mills are particularly  
24 valuable as they provide information on wood technology, fish processing and storage,  
25 environmental cognition, cultural beliefs, delayed return economics, and social  
26 organisation. They are also intimately connected to environmental factors including  
27 relative sea level, river discharges, storminess and fish populations. Because of this they  
28 should not be seen in isolation and require setting within their environmental – or  
29 sea/landscape context. Recently several coastal surveys have targeted fixed fishing  
30 structures along the Shannon estuary, Ireland (O’Sullivan 2005), Wales (Moore-Scott  
31 2007), Southern England (Brown et al. 2010; Royall 2013; Cooper et al. 2017) Brittany  
32 (Langouët and Daire 2009) and Normandy (Billard and Bernard 2016).  
33  
34  
35  
36  
37  
38  
39  
40  
41  
42

### 43 **Methodological Considerations**

44 The TLS survey used a Leica ScanStation C10 with scans registered together using High  
45 Definition Survey (HDS) targets, with a mean registration error of 4 mm. GNSS was used  
46 to survey in the target locations, creating a final registered accuracy of c.15 mm. The  
47 registered scans from each survey were incorporated into a single database. Standard  
48 challenges encountered with TLS are exacerbated by the environment of the inter-tidal  
49 zone. Reflectivity, the ability of a surface to return the laser signal, is reduced due to the  
50 presence of moisture or water, resulting in inaccurate or negative data. ‘Shadows’ or  
51 voids in the data are caused not just by the multi-faceted nature of the features of  
52 interest, creating the need for numerous setups, but also by the null or negative  
53  
54  
55  
56  
57  
58  
59  
60

1  
2  
3 responses from where the laser hits standing water. The stability of the equipment is  
4 problematic as the intertidal substrate becomes unstable with the rising tide, as the  
5 freshwater table rises in advance of salt water incursion. Logistical considerations are  
6 also exacerbated within the coastal zone as the tidal range creates a limited time frame  
7 in which to access and record archaeological remains. In many cases this also  
8 necessitated cleaning or re-excavating sites which have been inundated by sediment in  
9 every tidal cycle. In addition, in coastal environments wind and rain can be particularly  
10 challenging for equipment and the surveyor. Nonetheless, TLS offers a potential solution  
11 to the logistical difficulties associated with recording inter-tidal structures due to its  
12 relative speed, portability and high spatial resolution and accuracy.  
13  
14  
15  
16  
17  
18  
19  
20  
21

## 22 **The Sites**

23  
24 The sites are all located within the estuary of the Léguer River 5 km west of Lannion  
25 within the Côtes-d'Armor, Brittany (Figure 1). The Léguer river is 61.3 km long, the last  
26 9 km of which is tidal. The river discharges to the west into the Bay of Lannion, and is  
27 thus sheltered from the stronger currents of the Channel to the north. Downstream of  
28 Le Yaudet promontory the estuary widens significantly and it is here that the majority  
29 of the intertidal structures are located. Enclosing the Baie de la Vierge is a large curved  
30 wall which is known locally as 'le mur du pêcherie' – 'the wall of the fishery' but which  
31 has been interpreted as a tidal mill (Cunliffe and Galliou 2004). To the west of the Baie  
32 de la Vierge a large rectangular line of stones is located at the higher end of the tidal  
33 range. Further to the west the short curved line of stones at Poull Mad Dogan has been  
34 tentatively identified as a fishing weir (6), along with two further V-shaped weirs to the  
35 west at Dourven (1 & 2). Along the right (north) bank of the river are the large V-shaped  
36 structure at 'Le Petit Taureau' which were excavated in 2012 and 2013 (by Daire and  
37 Langouët). The excavations have revealed four distinct phases of weir built in stone (7),  
38 with an earlier timber phase identified through excavation in 2012 and 2013 (5).  
39 Further downstream another smaller V-shaped structure, Corps de Garde, is evident (3).  
40  
41  
42  
43  
44  
45  
46  
47  
48  
49  
50  
51  
52  
53

54 The Léguer estuary is a Site du Réseau Natura 2000, a designation applied to maintain  
55 fish stocks. Today the estuary has migratory species of sea trout (*Salmo trutta*), Atlantic  
56 salmon (*Salmo salar*), and European eel (*Anguilla anguilla*), and was likely home to the  
57 same species when the structures within the estuary were in use. Historical evidence  
58  
59  
60

1  
2  
3 also exists for the catching of a large shoal of herring (*Sardina pilchardus*) behind 'Le  
4 Mur du Pêcheurie' (Cassard 2003) – an event notable for being unusual, rather than  
5 representing the intended purpose of the structure.  
6  
7  
8  
9

## 10 **Results**

### 13 **Structures within an Intertidal Landscape**

14  
15 In 2006 the *Association Manche Atlantique pour le Recherche Archéologique dans les Îles*  
16 (AMARAI) commenced the 'Maritime Fish-traps of Brittany' project, to quantify and  
17 characterise fishing structures around the Breton coastline (Langouët and Daire 2009).  
18 The fieldwork compiled a database of over 550 structures. One key site identified for  
19 further investigation was the large V-shaped structure in the Léguer estuary at 'Le Petit  
20 Taureau', which had at least four phases and so presented an unusual opportunity to  
21 look at the development of such structures over time. A programme of excavation in  
22 2012 led to the discovery of a much earlier timber built V-shaped fishing structure  
23 directly underlying one phase of the stone alignments. The excavations revealed a line  
24 of wattle and post construction, supported by a finely crafted mortice and tenon sill-  
25 plate with triangular stanchions similar to the 'hurls' known from Irish weirs, which  
26 would have been filled with stones to stabilise the walls of the structure and prevent  
27 their destruction in strong tides or storms. The structure represents a substantial  
28 investment of skill, with finely constructed mortice and tenon construction, dated  
29 through dendrochronology to the 615 AD (Bernard and Langouët 2014). The TLS  
30 survey of the timber-built fishing structure was carried out while the excavation was  
31 ongoing, in June 2013. The excavated sections of the late 6<sup>th</sup> to early 7<sup>th</sup> century V-  
32 shaped structure were recorded, along with the extant 16<sup>th</sup>-18<sup>th</sup> century stone-built  
33 structures (Figs. 2-4). In addition a stone-paved trackway leading down to the beach  
34 (Figure 5), contemporaneous with the later structures, was also surveyed, as was the  
35 smaller V-shaped fishing structure at Corps de Garde to the west of the site. In  
36 November 2014 a return visit was made to scan the structure in the Baie de la Vierge, to  
37 the west of the promontory of Le Yaudet in order to survey in other features in the  
38 estuary.  
39  
40  
41  
42  
43  
44  
45  
46  
47  
48  
49  
50  
51  
52  
53  
54  
55  
56  
57  
58  
59  
60

1  
2  
3 The georeferenced TLS survey was imported into AutoCAD to generate two-  
4 dimensional sections of each structure. These sections were then plotted against each  
5 other with reference to the local mapping frame (IGN69) and zéro hydrographique  
6 (ZH), the French equivalent of chart datum (Figure 6). The cross-sections enable a direct  
7 visual comparison of the vertical placement of structures across the estuary within the  
8 tidal frame, and immediately allow some conclusions to be drawn. The most obvious is  
9 the relative heights of the structures at Le Yaudet and 'Le Petit Taureau', suggests that  
10 the structures were exploiting different ends of the tidal frame and therefore fulfilling  
11 very different functions.  
12  
13  
14  
15  
16  
17  
18  
19

20  
21 The relative heights of two phases of structure at 'Le Petit Taureau' initially suggested  
22 that the later structure sat higher in the tidal frame, potentially suggesting a shift in the  
23 RSL at this point. However, the cross-section of the *c.* 7th weir indicates that the timber  
24 sill beam had curved over a large underlying rock, implying that the structure has been  
25 pushed downward into the sediment by the weight of the overlying stone-built phase.  
26 This implies that the 7th century AD structure originally sat at a higher position within  
27 the tidal frame, by as much as 0.5m. The earlier phases of the structure at 'Le Petit  
28 Taureau' were first exposed due to an industrial level of sand extraction in the late 20th  
29 century, causing channel migration and displacement of sediments through the estuary.  
30 This relationship between the structures and the sediment is important, as it suggests  
31 that the various phases of rebuilding of the structure, and the increased height at which  
32 subsequent phases were built, could therefore be attributed to the gradual increase of  
33 the level of the foreshore due to sedimentation caused naturally and/or by the  
34 structures themselves. The scan of the trackway (Figure 5) also shows ongoing erosion  
35 of the cobbled surface, and the intensity of return image clearly differentiates between  
36 sand burying the lower part of the structure and the stone.  
37  
38  
39  
40  
41  
42  
43  
44  
45  
46  
47  
48  
49

### 50 **Scanning and Volumetric Modelling 'Le Mur de Pêcherie' in the Baie de la Vierge**

51 The first archaeological investigations of 'Le Mur du Mêcherie' (Figure 7a) carried out in  
52 the 1970s included an excavation across a sluice (Pinot 1991; Figure 7b). The structure  
53 was then comprehensively surveyed as part of the investigations into the site at Le  
54 Yaudet (Cunliffe and Galliou 2004), and a stone by stone plan produced (Figure 7c). The  
55 excavation had uncovered the base of the presumed sluice, and so provided valuable  
56  
57  
58  
59  
60



1  
2  
3 information about the positioning of a diagnostic feature in relation to the tidal frame.  
4 Alignment of the Pinot drawing with an elevation generated from the laser scanning  
5 data allows the accurate placement of this significant feature within the tidal frame  
6 (Figure 7b). The results compare well with the tide mill uncovered at Nendrum,  
7 Northern Ireland, where the base of the millrace pond sat approximately 0.5 m below  
8 MHWN (Browne 2007). This supports the hypothesis that the structure at Le Yaudet is  
9 most likely the reservoir wall for a tide mill. A comparison of the sections also reveals  
10 slight differences in the morphology of the structures at 'Le Mur de Pêcherie' compared  
11 to those at 'Le Petit Taureau'. The walls of the 'Le Mur de Pêcherie' slightly inclined at an  
12 angle of around 6° from the vertical, differing in profile from the structure of 'Le Petit  
13 Taureau' which has pronounced perpendicular construction in the areas of extant  
14 blockwork. Similarly in plan the structure differs, resembling a gentle arc rather than  
15 the V-shape which defines the other fishing structures within the estuary. The structure  
16 is also perforated by several openings which appear to have functioned as sluices, and  
17 which have no comparable features with the structures at 'Le Petit Taureau'.  
18  
19  
20  
21  
22  
23  
24  
25  
26  
27  
28  
29  
30

31 The placement of the structures within the tidal frame can also be used to explain their  
32 differences in size and morphology. The large fixed fishing structures at 'Le Petit  
33 Taureau' are situated between the MLWN and the MLWS levels, where 74% of low tides  
34 fall. It follows that the principal investment in the construction of fixed fishing  
35 structures would be within this area, as it would maximise the return of investment by  
36 providing the greatest tidal exposure and potentially thus the largest amount of fish.  
37 The smaller weirs at Dourven and Corps de Garde fall below the level of the MLWS but  
38 crucially not below the level of the LAT. There is therefore no reason to assume that  
39 they were not contemporary with the large structure at 'Le Petit Taureau', as they  
40 would still have been exposed, and therefore been functional, during extremely low  
41 tides. Approximately 15% of low tides fall within this range and it may be postulated  
42 that the relatively small size of the weirs and their position within the tidal frame are  
43 not due to their relative antiquity, as originally proposed by Langouët et al. (2012), but  
44 to the lesser exposure of this area of the foreshore.  
45  
46  
47  
48  
49  
50  
51  
52  
53  
54  
55  
56

57 As noted above, a comparison of the heights and morphology of the various structures  
58 across the estuary supports the view that structure in the Baie de la Vierge at Le Yaudet  
59  
60

1  
2  
3 is the reservoir for a tide mill as suggested by Cunliffe and Galliou (2004). The majority  
4 of the tidal mills in France are from the Brittany region and in 2016, a new inventory  
5 was completed and 140 tidal mills are now identified from archaeological data and  
6 historical records (accessible at: [http://patrimoine.bzh/gertrude-diffusion/dossier/les-](http://patrimoine.bzh/gertrude-diffusion/dossier/les-moulins-a-maree-de-bretagne/19934f6b-e5d4-42a0-ba6d-ec8b00638295)  
7 [moulins-a-maree-de-bretagne/19934f6b-e5d4-42a0-ba6d-ec8b00638295](http://patrimoine.bzh/gertrude-diffusion/dossier/les-moulins-a-maree-de-bretagne/19934f6b-e5d4-42a0-ba6d-ec8b00638295)). The Baie de  
8 la Vierge is ideal for a tide mill, being an unused inlet that could easily be blocked off  
9 (Charlier *et al.* 2004). The placement of the structure at the top end of the tidal frame is  
10 consistent with the siting of tide mills, which required a tidal coefficient of 65 to 70  
11 (Wailles and Gardner 1938). In practice this meant that they were sited at a point in the  
12 tidal frame three hours above the turning tide (Charlier and Menanteau 1997). The  
13 barrage is referred to in the *Vita S. Euflam (Life of Saint Eflam)* the earliest version of  
14 which is thought to have been written down in the twelfth century (de La Borderie  
15 1892, 289–90 cited in Cunliffe and Galliou 2004). It is referred to as a device for  
16 trapping fish, omitting any mention of a milling function suggesting that by the 12th  
17 Century the mill and all knowledge of it had disappeared (Cunliffe and Galliou 2004).  
18 The presence of 7th century AD constructions on the north side of the estuary, and the  
19 association of the structure with the Life of St Eflam, suggests that the ‘Mur de Pêcheurie’  
20 is of an early medieval date. In this case it would be directly comparable to the 7th  
21 century AD sites of Ebbsfleet (AD 691-2) in Kent, England (Hardy *et al.* 2011), Nendrum  
22 (AD 619-621) in County Down, Northern Ireland (McErlean and Crothers 2007), and  
23 Little Island (AD 630) in County Cork, Ireland (Rynne 2000). All of these examples are  
24 on narrow tidal-creeks and on sheltered parts of the coast, with those that also use a  
25 freshwater source placed where a small stream enters an estuary, as it is the case at Le  
26 Yaudet. There is also evidence of cultivation and several corn drying mills at Le Yaudet  
27 associated with what was probably a significant early monastic settlement (Cunliffe and  
28 Galliou 2004). The lack of evidence for a wheelhouse is not as problematic as it might  
29 seem, as most mills of an early date, such as Nendrum, Ebbsfleet or Killoteran were  
30 constructed almost entirely of wood (Hardy *et al.* 2011). Horizontal mill wheels,  
31 common in tide mills of most periods, would have sat above the wall. The suggestion  
32 that the structure had the primary function of a mill and millpond does not preclude its  
33 use for catching fish, indeed the tide mill at Nendrum was originally thought to have  
34 been a fishing structure prior to its extensive excavation (McErlean and Crothers 2007).  
35  
36  
37  
38  
39  
40  
41  
42  
43  
44  
45  
46  
47  
48  
49  
50  
51  
52  
53  
54  
55  
56  
57  
58  
59  
60

Work by Browne (2007) on Nendrum mill provides a model by which this volumetric data can be used to assess the potential mill output. To calculate the volume behind the 'Mur de Pêcheurie' the point cloud was interpolated into a surface by fitting a TIN (triangulated irregular network) creating a Digital Elevation Model (DEM). A flat plane was then introduced above the DEM at the height of MSL, MHWN, MHWS and HAT (Figure 8). This allows a visualisation of the different tidal states and the calculation of the potential of the reservoir by calculating the volume between the plane and the mesh. Tide mills were unusable on neap tides or when the wind held up the waters, and in any case the MHWN level falls below the level of the structure. A calculation of the volume of the reservoir during MHWS will therefore give the average volume of water on usable tides. This was calculated for the extant remains and then calculated for a range of heights which may represent the extent of the original structure. The excavations by Pinot (1991) show that the functional part of the structure lay at least 1m below present ground level, and the lack of a binding course on top of the current structure suggest it may have been at least one course higher than the current extant remains. Calculations were therefore made for the extant remains plus additional heights at 0.5 m intervals (Table 1).

	<b>MHWS</b>	<b>HAT</b>
Extant remains	9926	26189
Extant remains +1m	28177	51241
Extant remains +1.5m	40253	65730
Extant remains +2m	53764	81210

Table 1. Estimated potential volumetric capacity (in cu m) of 'Le Mur de Pêcheurie'

The volume was then calculated using the formula by Browne (2007) to calculate the potential annual output of the mill, based on the characteristics of the mill at Nendrum. Although the morphological data from the site is incomplete, known 7th century AD tide mills show a great deal of consistency. The modern tidal range at Nendrum is *c.* 3.4 m. The Nendrum millpond has area of 2000 m<sup>2</sup>, which at MHWS created a volume of water of approximately 1800 cu m. According to Browne (2007) this allowed the tide mill to generate an annual power equivalent to 50 tonnes of milled barley per year. A comparison with results of the volumetric analysis at Le Yaudet suggests that it could have had a volume nearly 16 times greater than that of Nendrum, allowing as much as

800 tonnes of barley to be milled per year supporting a population of over 1000 (assuming 20 bushels per head per year).

### The Léguer Estuary: A Landscape of Production

Le Yaudet headland, which has significant earthwork fortifications dating from the Iron Age and Roman periods, continued in importance through the early Medieval and Medieval periods as a religious centre for pilgrimage linked with the lives of St. Enora and St. Efflam - prominent 6th century Irish missionaries (Cassard 2003; Cunliffe and Galliou 2004). The number, size and persistence of the fixed-fishing structures, including the creation of the rock-cut and constructed track to them (Figure 5) and the tidal mill suggest a large and stable local community under monastic or seignorial control. The TLS survey also provided the opportunity to examine the relationships of the structures within the tidal frame, as different structures require fixed areas of the tidal frame to operate. Intertidal structures have the potential to be used as benchmarks for sea level, and previous work in the Léguer estuary by Langouët *et al.* (2012) has taken this approach and assumed that the dates of the intertidal structures within the estuary can be calculated by comparing their varying heights (Table 2). In this approach the base of each intertidal structure is assumed to be at the level of the 'plus haute basse mer de morts-eaux' (PHBMme) or lowest neap tide.

No	Site	Nb(m)	$\delta$ (PHBMme) (m)	Attributed Age
1	Trédrez, Dourven-A	0.40 ± 0.20	3.70 ± 0.10	Bronze Age
2	Trédrez, Dourven-B	0.70 ± 0.20	3.40 ± 0.10	Bronze Age
3	Servel, Corps de Garde	1.70 ± 0.10	2.40 ± 0.10	Iron Age
4	Ploulec'h, Baie de la Vierge	2.38 ± 0.10	1.70 ± 0.20	Gallo-Roman to early Medieval
5	Servel, Petit Taureau (D)	2.45 ± 0.05	1.60 ± 0.10	650 AD
6	Ploulec'h, Poull Mad Dogan	2.80 ± 0.30	1.30 ± 0.30	Early Medieval
7	Servel, Petit Taureau (A)	2.90 ± 0.10	1.20 ± 0.10	Late 15 <sup>th</sup> century

Table 2. Surveyed heights of inter-tidal structures within the Léguer Estuary.

The difference between this level and the modern datum is then calculated ( $\delta$ (PHBMme)), and used to provide a relative date. However, it is suggested here that the structures operated, contemporaneously within the tidal frame. This makes the

1  
2  
3 assumption that the tidal frame has remained roughly the same since construction. This  
4 is a difficult assumption to test as an accurate enough historical sea level curve does not  
5 exist for this location. The tidal gauge at Roscoff has been recording tidal height data  
6 since 1973, during which time the monthly mean has risen from 6834 mm to 7037 mm  
7 above RLR (revised local reference) datum. However, this short period accounts for  
8 only two full metonic cycles (period of 19 years in which the sun, moon and earth return  
9 to the same relative positions) and so cannot easily be projected backwards over  
10 several centuries. It is therefore difficult to use this as a model of the RSL over past 1500  
11 years at the site. What can be said, however, is that none of the structures at the site lies  
12 outside the tidal frame, all are submerged for at least some of the tides, and none are  
13 below LAT. If there had been a significant shift of the relative sea level in either  
14 direction, one or more of the structures would likely lie outside the tidal frame.  
15 Additionally all of the structures are in the appropriate location within the tidal frame to  
16 fulfil their original function, as all of the presumed fixed fishing structures are situated  
17 between the MLWS and MLWN levels, whilst the 'Mur de Pêcheurie' is perfectly  
18 positioned to function as a tide mill. The difference in heights between the 7th century  
19 timber weir and the later overlying structures appears to have been caused by  
20 sedimentation rather than a change in RSL. In contrast, examples of fishing structures  
21 from other locations in Brittany, as well as comparable sites in Wales and Essex, have  
22 been found below the level of LAT (O'Sullivan 2003).  
23  
24  
25  
26  
27  
28  
29  
30  
31  
32  
33  
34  
35  
36  
37  
38  
39

## 40 **Conclusions**

41  
42 In assessing the function of the varying sites within the Léguer estuary, the application  
43 of TLS has made a significant contribution. The TLS modelling of the 'Mur de Pêcheurie'  
44 of its morphology, tidal-frame position and volumetric potential in association with an  
45 early monastic settlement all make a strong case for its usage as a tide mill. The TLS  
46 survey at a landscape level shows several structures operating for several different  
47 purposes within the tidal frame. This exploitation of different parts of the intertidal and  
48 coastal zone across this small estuary implies a control of the landscape as a whole,  
49 most likely from the settlement and monastic community at Le Yaudet, - a fortified early  
50 Medieval settlement with a sheltered landing place, one large fishweir to exploit the  
51 majority of tides, one or more smaller weirs for the more extreme tides, and a tidal mill  
52 for flour production. This would certainly be in keeping with the concept of a monastic  
53  
54  
55  
56  
57  
58  
59  
60

1  
2  
3 community and the early Medieval concept of self-sustaining communities with an  
4 emphasis on fish-eating in keeping with the 6th century Rule of St Benedict which also  
5 stated that monasteries should have mills (Wikander 2000). The association of Le  
6 Yaudet with 6<sup>th</sup> century Irish monasticism, and the very similar tide mill sites at  
7 Nendrum and Little Island, provides an interesting wider geographical context.  
8  
9  
10  
11  
12

### 13 **Acknowledgements**

14 Thanks to Jo Nield, Rick Turner, & Martin Bell for assistance and advice.  
15  
16  
17  
18

### 19 **References**

20  
21 Abbott, M. & H. Anderson-Whymark. 2012. *Stonehenge laser scan: Archaeological*  
22 *Analysis Report*. English Heritage Report 6457, Research Report Series 32-2012, English  
23 Heritage, London.  
24  
25

26  
27  
28 Bernard, V. & L. Langouët. 2014. Early Middle Ages Fishweirs, Dendrochronology and  
29 Wood Supply in Western France: The Case of the Léguer Estuary, Servel-Lannion,  
30 Northern Brittany, France. *Journal of Wetland Archaeology* 14: 34-47.  
31  
32

33  
34 Billard C. & V. Bernard (eds) 2016. *Pêcheries de Normandie: Archéologie et histoire des*  
35 *pêcheries littorales du département de la Manche*. PUR, Collection Archéologie et Culture,  
36 Rennes: 720 p.  
37  
38

39  
40 Brown, A.D., Turner, R.C. & C. Pearson. 2010. Medieval fishing structures and baskets at  
41 Sudbrook Point, Severn Estuary, Wales. *Medieval Archaeology* 54 : 346-361.  
42  
43  
44

45  
46 Browne, M. 2007. An Examination of Extractable Energy and Milliny Capacity of Mill 2.  
47 *In: Mcerlean, T. & Crothers, N. (eds.) Harnessing the Tides: The Early Medieval Tide Mills*  
48 *at Nendrum Monastery, Strangford Lough*. Environment and Heritage Service.  
49  
50

51  
52  
53 Cassard, J-C. 2003. *Les Bretons de Nominoë*. Presse Universitaire des Rennes, 352p.  
54  
55

56  
57 Charlier, R. H. & L. Menanteau. 1997. *The Saga of Tide Mills. Renewable & Sustainable*  
58 *Energy Reviews* 1 : 171-207.  
59  
60

1  
2  
3 Charlier, R. H., Ménanteau, L. & M-C.P. Chaineux. 2004. *The Rise and Fall of the Tide Mill.*  
4 *Ocean sciences bridging the millennia: a spectrum of historical accounts.* UNESCO  
5 Publishing, Paris & China Ocean Press, Qingdao, pp.315-338.  
6  
7

8  
9  
10 Cooper, J.P., Caira, G., Opdebeeck, J., Papadopoulou, C. & V. Tsiairis. 2017. A Saxon Fish  
11 Weir and Undated Fish Trap Frames Near Ashlett Creek, Hampshire, UK: Static  
12 Structures on a Dynamic Foreshore. *Journal of Marine Archaeology* 12 : 33–69.  
13  
14

15  
16  
17 Cunliffe, B. & P. Galliou. 2004. *Les Fouilles Du Yaudet En Ploulec'h, Cotes-D'armor.*  
18 Volume 1: Le Site: Le Yaudet, Dans L'histoire Et La Legende, Oxford University School of  
19 Archaeology.  
20  
21

22  
23  
24 English Heritage 2011. *3D Laser Scanning for Heritage (second edition). Advice and*  
25 *guidance to users on laser scanning in archaeology and architecture.* English Heritage,  
26 London.  
27  
28

29  
30  
31 Entwistle, J.A., McCaffrey, K.J.W, & P.W. Abrahams. 2009. Three-dimensional (3D)  
32 visualisation: the application of laser scanning in the investigation of historical Scottish  
33 farming townships. *Journal of Archaeological Science* 36: 860-866.  
34  
35

36  
37 Hardy, A., Watts, M. & D. Goodburn. 2011. The Mid-Saxon Mill at Northfleet. *In:* P.  
38 Andrews, E. B., A. Hardy and R. Brown (eds.) *Settling the Ebbsfleet Valley. High Speed I*  
39 *Excavations at Springhead and Northfleet, Kent.*  
40  
41

42  
43  
44 Jacock, M. 2011. *Introduction to Heritage Assets. River Fisheries and Coastal Fish Weirs.*  
45 English Heritage, London, p5.  
46  
47

48  
49  
50 Langouët, L. & M-Y. Daire. 2009. Ancient maritime fish-traps of Brittany (France): a  
51 reappraisal of the relationship between human and coastal environment during the  
52 Holocene. *Journal of Maritime Archaeology* 4:131–148.  
53  
54  
55  
56  
57  
58  
59  
60



1  
2  
3 Langouët, L., Daire, M.-Y. & V. Bernard. 2012. Les Barrages de Pêcheries de l'estuaire du  
4 Léguer. *Association Manche Atlantique pour la Recherche Archéologique dans les Îles*,  
5 25 : 65-86.  
6  
7  
8

9  
10 Lobb, M., Krawiec, K., Howard, A.J., Gearey, B.R., & H.P. Chapman. 2010. A new approach  
11 to recording and monitoring wet-preserved archaeological wood using three-  
12 dimensional scanning. *Journal of Archaeological Science* 37: 2995-2999.  
13  
14

15  
16 McErlean, T. & N. Crothers. 2007. *Harnessing the Tides : The Early Medieval Tide Mills at*  
17 *Nendrum Monastery, Strangford Lough*. Norwich, Stationery Office.  
18  
19

20  
21 Moore-Scott, T. 2009. Medieval Fish Weirs on the Mid-Tidal Reaches of the Severn River  
22 (Ashleworth-Arlingham). *Glevensis* 42: 31-44.  
23  
24

25  
26 O'Sullivan, A. 2003. Place, Memory and Identity among Estuarine Fishing Communities:  
27 Interpreting the Archaeology of Early Medieval Fish Weirs. *World Archaeology* 35: 449-  
28 468.  
29  
30  
31

32  
33 O'Sullivan, A. 2005. Medieval Fish Traps on the Shannon Estuary, Ireland: Interpreting  
34 People, Place and Identity in Estuarine Landscapes. *Journal of Wetland Archaeology* 5:  
35 65-77.  
36  
37  
38

39  
40 Pinot, J-P. 1991. *Histoire d'un estuaire: La rivière de Lannion*. Charpiana, Mélanges offerts  
41 par ses amis à Jacques Charpy. Rennes: Fédération des Sociétés Savantes de Bretagne.  
42  
43  
44

45  
46 Pontee N. I, & A. Parsons. 2010. A review of coastal risk management in the UK.  
47 *Proceedings of the Institution of Civil Engineers, Maritime Engineering Journal* 162 (Issue  
48 MA1): 31-42.  
49  
50

51  
52 Royall, C. 2013. *Rapid Coastal Zone Assessment Survey for South-West England - South*  
53 *Coast Dorset Component One National Mapping Programme*. English Heritage Project  
54 Number 6673, English Heritage, London.  
55  
56  
57  
58  
59  
60



1  
2  
3 Rynne, C. 2000. Waterpower in Medieval Ireland. *Technology and Change in History* 3: 1-  
4 50.  
5  
6  
7

8 Tanner, P. 2013. 3D Laser Scanning for the Digital Reconstruction and Analysis of a 16th  
9 Century Clinker Built Sailing Vessel. In Colin Breen and Wes Forsythe (eds). *ACUA*  
10 *Underwater Archaeology Proceedings 2013*, SHA Leicester.  
11  
12  
13

14  
15 Wikander, Ö. 2000. *Handbook of Ancient Water Technology*. Brill Leiden.  
16  
17

18  
19 Zlot, R. & M. Bosse. 2014. Three-dimensional mobile mapping of caves. *Journal of Cave*  
20 *and Karst Studies* 76, 191–206.  
21  
22  
23  
24  
25  
26  
27  
28  
29  
30  
31  
32  
33  
34  
35  
36  
37  
38  
39  
40  
41  
42  
43  
44  
45  
46  
47  
48  
49  
50  
51  
52  
53  
54  
55  
56  
57  
58  
59  
60



Figure 1. Intertidal structures: Légier estuary 1. Dourven-A 2. Dourven-B 3. Corps de Garde 4. Baie de la Vierge and the 'Mur de Pêcheur', 5. Petit Taureau (D) 6. Poull Mad Dogan 7. Petit Taureau (A).

159x97mm (220 x 220 DPI)

1  
2  
3  
4  
5  
6  
7  
8  
9  
10  
11  
12  
13  
14  
15  
16  
17  
18  
19  
20  
21  
22  
23  
24  
25  
26  
27  
28  
29  
30  
31  
32  
33  
34  
35  
36  
37  
38  
39  
40  
41  
42  
43  
44  
45  
46  
47  
48  
49  
50  
51  
52  
53  
54  
55  
56  
57  
58  
59  
60



Figure 2. Petit Taureau fish weir under excavation (M. Lobb)

157x117mm (150 x 150 DPI)



Figure 3. TLS scans of Petit Taureau and detail under excavation and photo (bottom right)

242x109mm (150 x 150 DPI)

1  
2  
3  
4  
5  
6  
7  
8  
9  
10  
11  
12  
13  
14  
15  
16  
17  
18  
19  
20  
21  
22  
23  
24  
25  
26  
27  
28  
29  
30  
31  
32  
33  
34  
35  
36  
37  
38  
39  
40  
41  
42  
43  
44  
45  
46  
47  
48  
49  
50  
51  
52  
53  
54  
55  
56  
57  
58  
59  
60

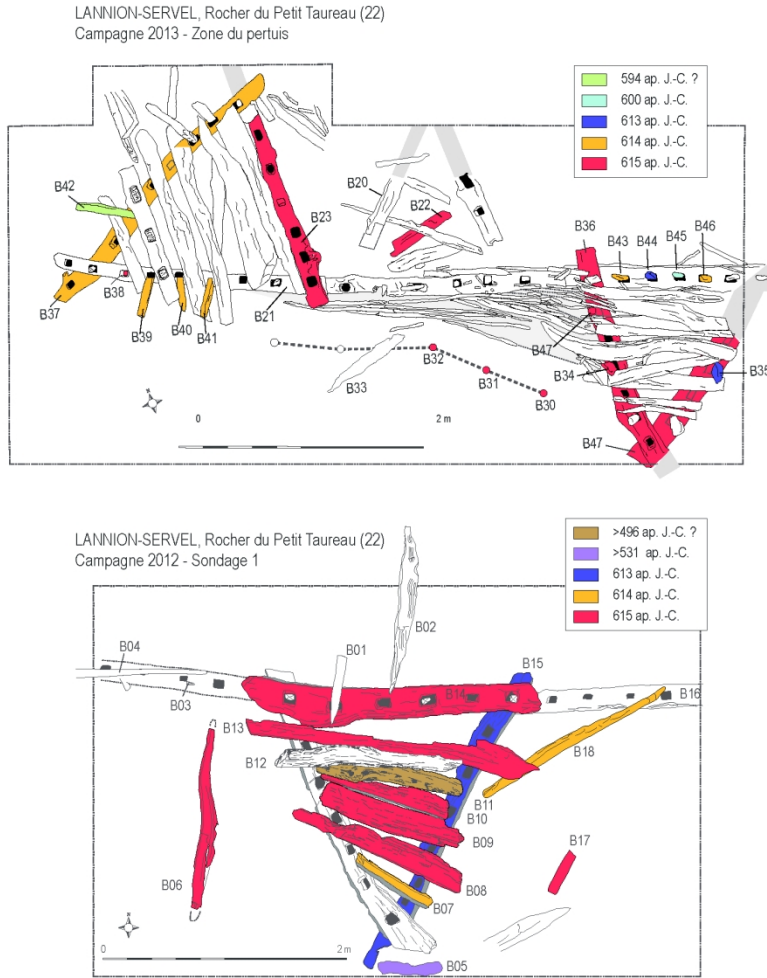


Figure 4. Plans of the Petit Taureau fish trap with dendrochronological dates.

210x297mm (200 x 200 DPI)



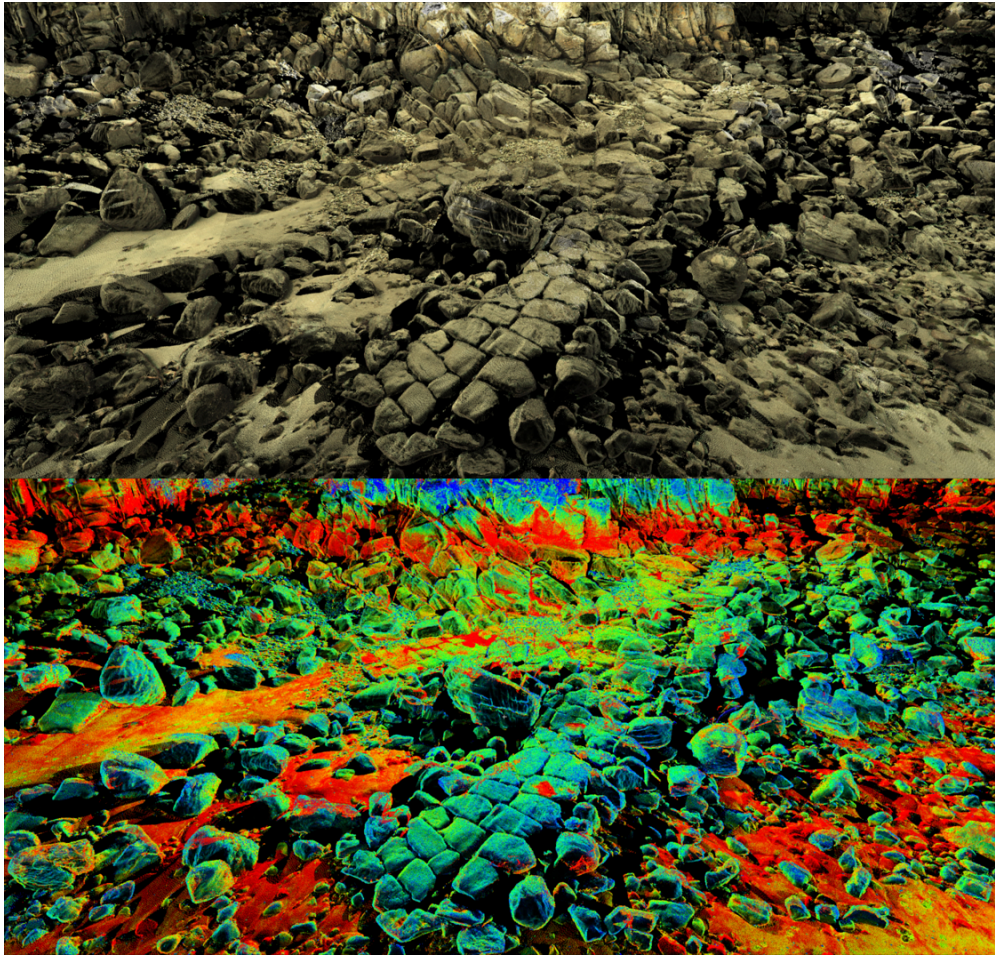


Figure 5. The stone-paved trackway leading down to Petit Taureau. Photo draped (top), intensity draped (bottom).

190x181mm (150 x 150 DPI)

1  
2  
3  
4  
5  
6  
7  
8  
9  
10  
11  
12  
13  
14  
15  
16  
17  
18  
19  
20  
21  
22  
23  
24  
25  
26  
27  
28  
29  
30  
31  
32  
33  
34  
35  
36  
37  
38  
39  
40  
41  
42  
43  
44  
45  
46  
47  
48  
49  
50  
51  
52  
53  
54  
55  
56  
57  
58  
59  
60

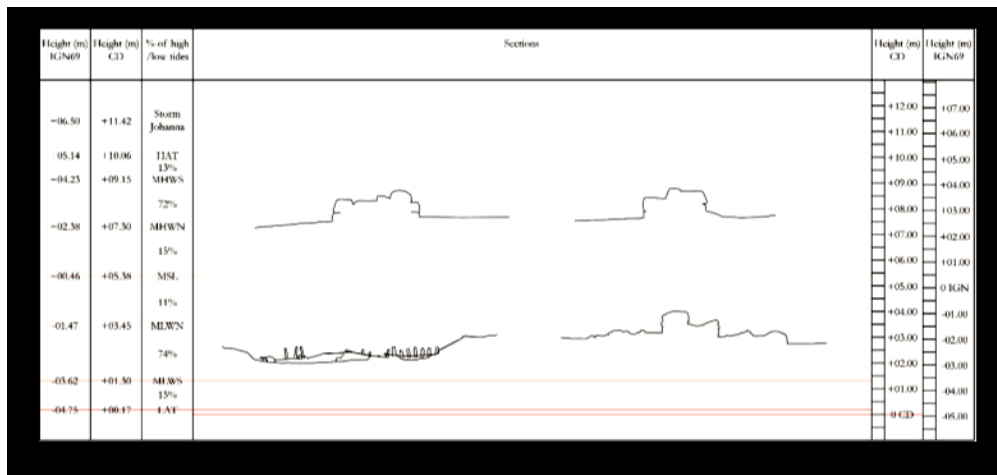


Figure 6. TLS heights of structures within the Léguer estuary. The red lines indicate the various heights of the tidal state (shown left). The top profiles show cross-sections of the structure at Le Yaudet, while the bottom two profiles show a section across the excavated 7th century timber structure (left) and extant stone 16th-18th century weir (right). HAT = Highest Astronomical Tide, MHWS = Mean High Water Spring, MSL = Mean Sea Level, MLWN = Mean Low Water Neaps, MLWS = Mean Low Water Springs, LAT = Lowest Astronomical Tide

132x62mm (150 x 150 DPI)

1  
2  
3  
4  
5  
6  
7  
8  
9  
10  
11  
12  
13  
14  
15  
16  
17  
18  
19  
20  
21  
22  
23  
24  
25  
26  
27  
28  
29  
30  
31  
32  
33  
34  
35  
36  
37  
38  
39  
40  
41  
42  
43  
44  
45  
46  
47  
48  
49  
50  
51  
52  
53  
54  
55  
56  
57  
58  
59  
60

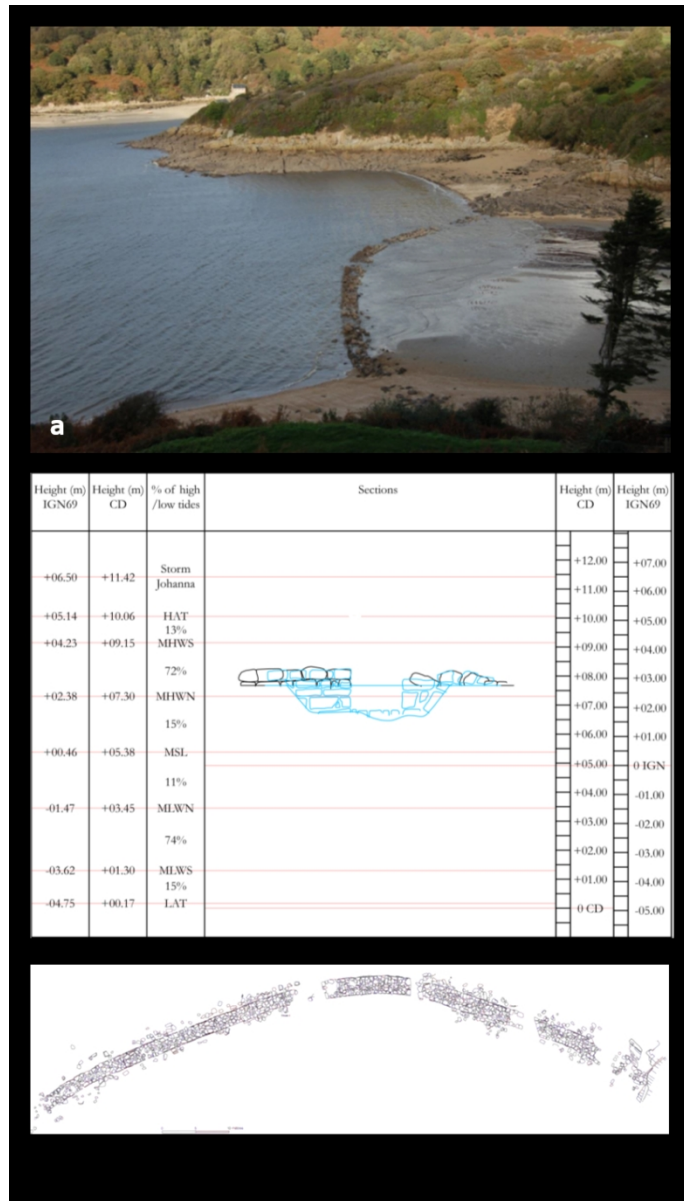


Figure 7 (a) The stone intertidal structure at the foot of le Yaudet from the west at mid tide, (b) Pinot (1991) elevation (blue) rectified to point cloud elevation (black), the red lines indicate the heights of the different tidal states (c) Plan of structure at Le Yaudet produced by total station survey (Cunliffe and Galliou 2004).

141x246mm (150 x 150 DPI)



1  
2  
3  
4  
5  
6  
7  
8  
9  
10  
11  
12  
13  
14  
15  
16  
17  
18  
19  
20  
21  
22  
23  
24  
25  
26  
27  
28  
29  
30  
31  
32  
33  
34  
35  
36  
37  
38  
39  
40  
41  
42  
43  
44  
45  
46  
47  
48  
49  
50  
51  
52  
53  
54  
55  
56  
57  
58  
59  
60

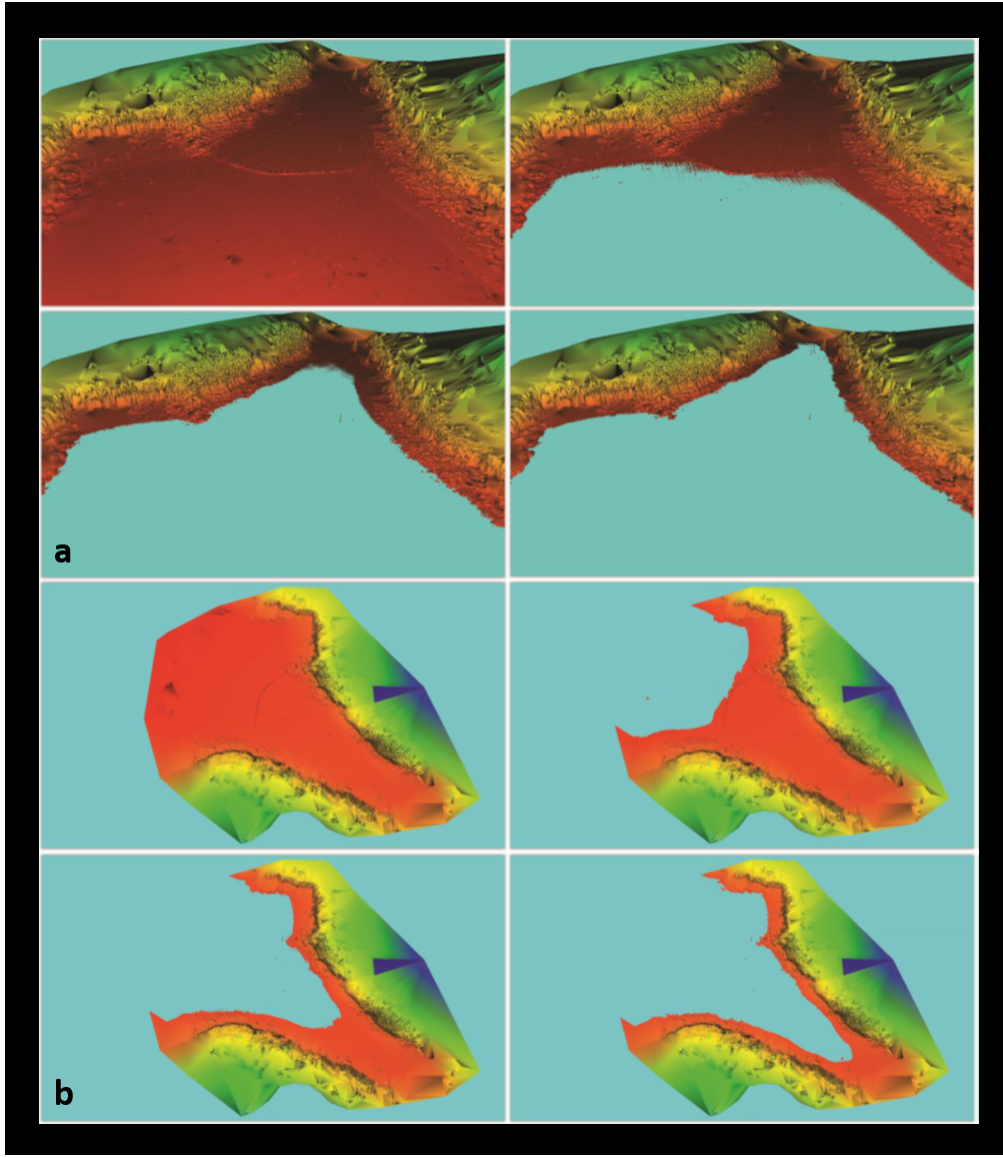


Figure 8. (a) NE view of the TLS survey of the structure at Le Yaudet with virtual water levels set to MSL (top left), MHW (top right), MHWS (bottom left) and HAT (bottom right), (b) NE view of the TLS survey of the structure at Le Yaudet with virtual water levels set to MSL (top left), MHW (top right), MHWS (bottom left) and HAT (bottom right).

169x195mm (150 x 150 DPI)