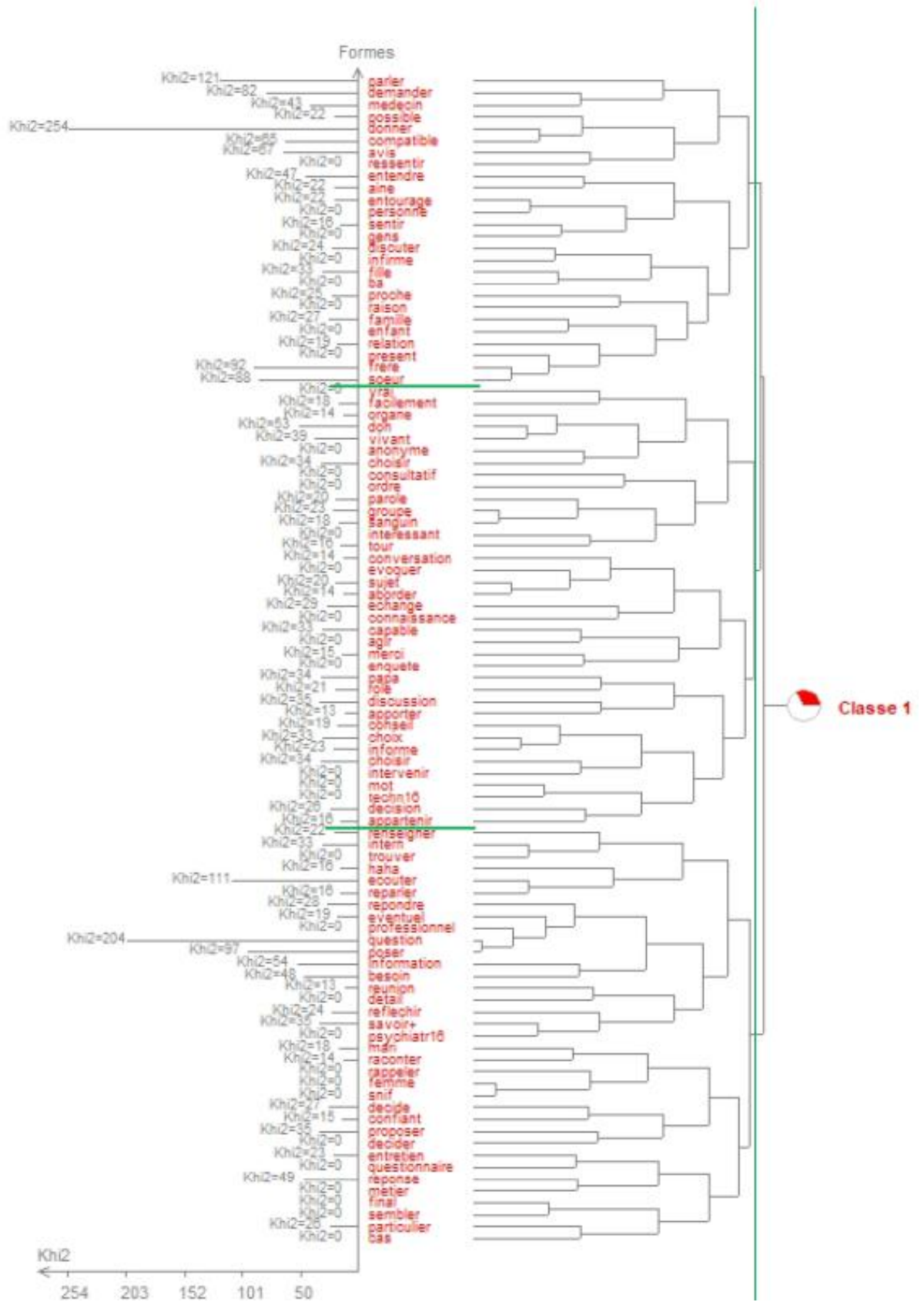
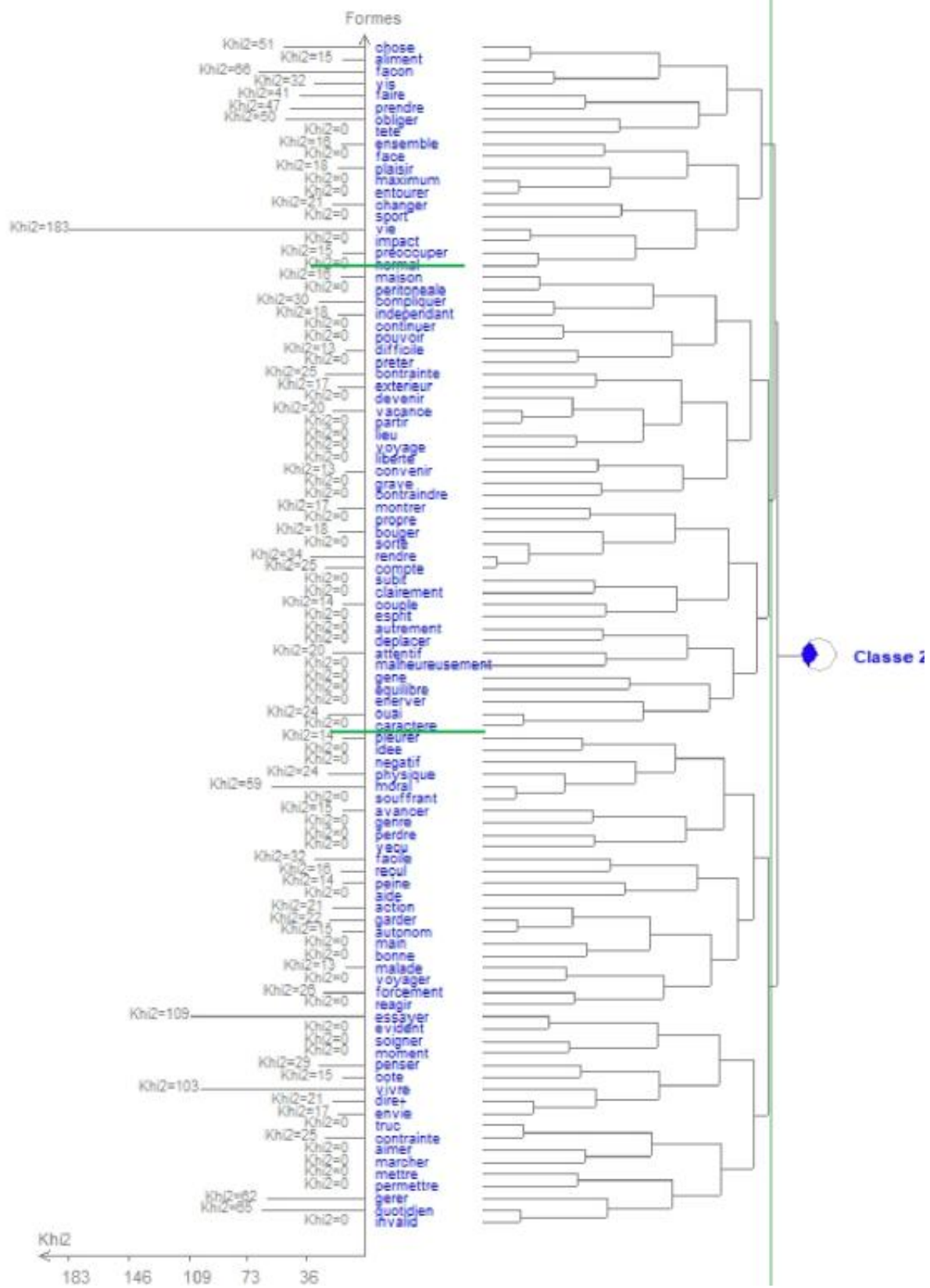
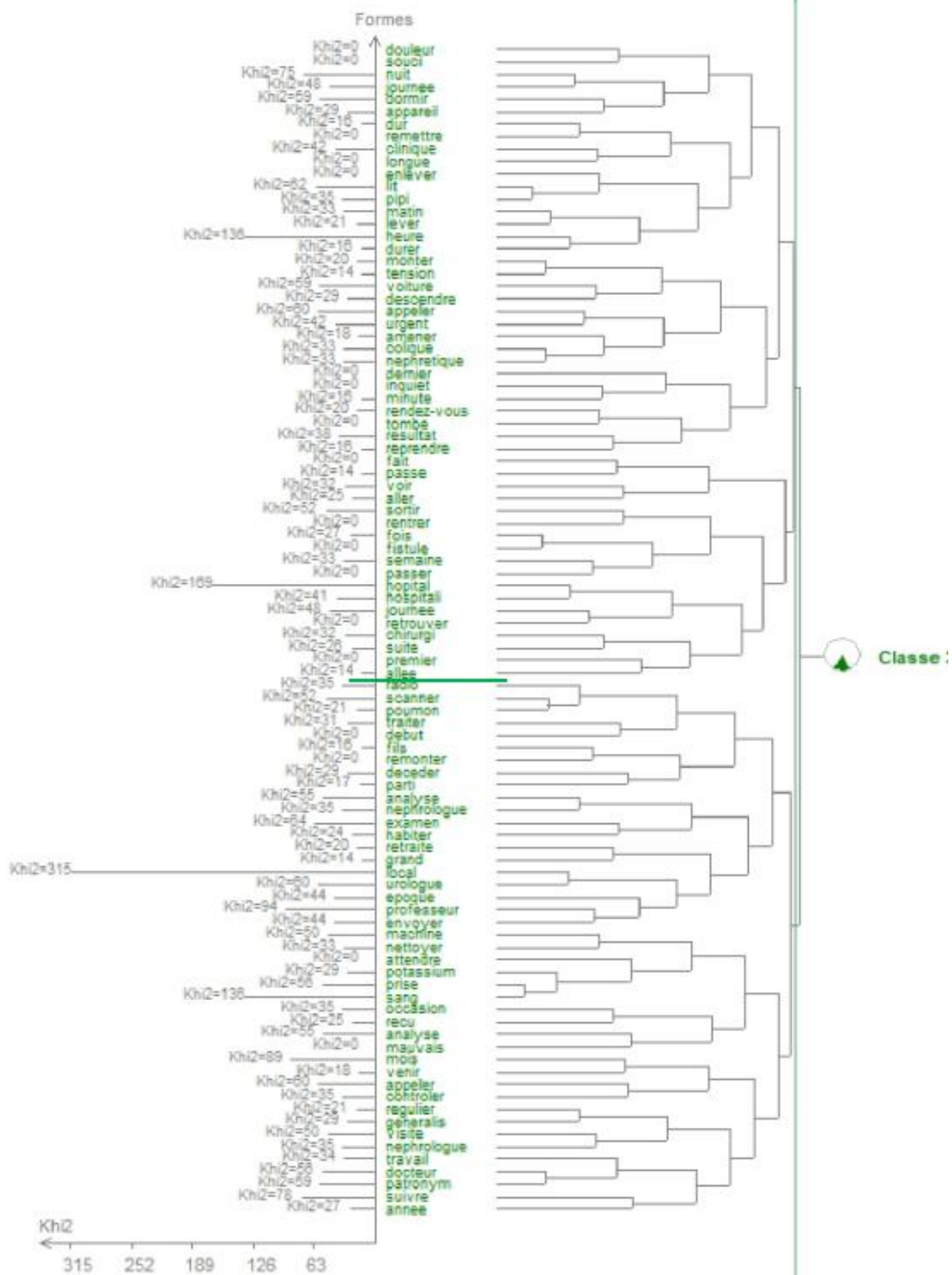


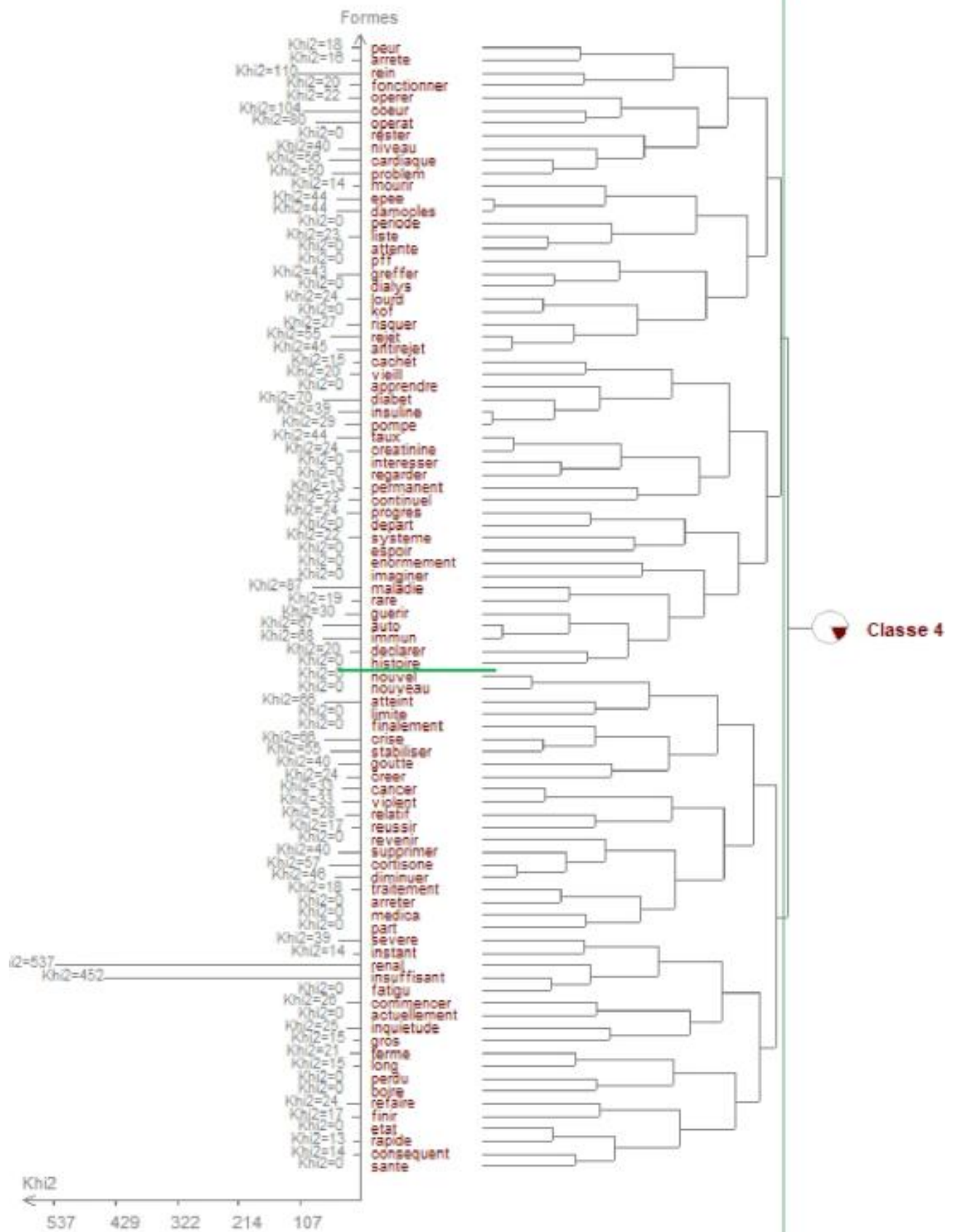
**Appendix 1: ALCESTE® FHC outputs for the four classes**

*Note: the green lines illustrate the cut made by LM and KL to establish the subclasses.*









**Appendix 2:** Output of the grammatical groups associations with class 1

Here is a list of grammatical categories present ins class 1, with their  $Khi^2$  and their numbers.

$Khi^2 > 0$  indicates a relative presence of the category

$Khi^2 < 0$  indicates a relative absence of the category

$Khi^2 = 0$  indicates that the presence of the category is not significant

<b>Grammatical category</b>	<b>Khi<sup>2</sup></b>	<b>Number</b>
<b>Family</b>	61	168
<b>Personal pronouns (grammatical words)</b>	28	4418
<b>Disjuncts (grammatical words)</b>	16	2392
<b>Modal verbs (or liable to be)</b>	5	1358
<b>Numbers</b>	5	20
<b>Auxiliary (<i>être</i> ou <i>avoir</i> : to be or to have) (grammatical words)</b>	4	2065
<b>Interjections</b>	2	1998
<b>Verbs</b>	1	3654
<b>Spatial relation markers (grammatical words)</b>	0	512
<b>Markers of discursive relation (grammatical words)</b>	0	4694
<b>Adverbs ending with '-ly'</b>	0	347
<b>Colors</b>	0	2
<b>Time/Measure</b>	0	8
<b>Locations, countries</b>	0	4
<b>Words in capital letters</b>	0	37
<b>Unrecognized forms but non-coded</b>	0	1508
<b>Intensity markers (grammatical words)</b>	-1	1066
<b>Demonstratives, indefinite and relatives (grammatical words)</b>	-1	6085
<b>Unclassified grammatical words</b>	-3	564
<b>Temporal relation markers (grammatical words)</b>	-7	769
<b>Adjectives and adverbs</b>	-13	880
<b>Month, day</b>	-15	4

---

**Nouns**

-59

3396

---

**Appendix 3:** Output of the Factorial Correspondence Analysis

