



**HAL**  
open science

## Tephrostratigraphy of Limagne revisited. Implications for Late Glacial and Holocene Prehistory.

Gérard Vernet, Jean-Paul Raynal

► **To cite this version:**

Gérard Vernet, Jean-Paul Raynal. Tephrostratigraphy of Limagne revisited. Implications for Late Glacial and Holocene Prehistory.. Tephros, chronology, archaeology, ss la dir. de E. Juvigné et J.P. Raynal, Les dossiers de l'Archéo-Logis n°1, 2001, Goudet, France. pp.111-116. halshs-00004101

**HAL Id: halshs-00004101**

**<https://shs.hal.science/halshs-00004101v1>**

Submitted on 12 Jul 2005

**HAL** is a multi-disciplinary open access archive for the deposit and dissemination of scientific research documents, whether they are published or not. The documents may come from teaching and research institutions in France or abroad, or from public or private research centers.

L'archive ouverte pluridisciplinaire **HAL**, est destinée au dépôt et à la diffusion de documents scientifiques de niveau recherche, publiés ou non, émanant des établissements d'enseignement et de recherche français ou étrangers, des laboratoires publics ou privés.

Juillet 2001

---

# TEPHRAS

**chronologie**  
*chronology*

**archéologie**  
*archeology*

sous la direction de E. Juvigné et J.-P. Raynal

édité avec le concours de la région Auvergne et du Conseil Général de Haute-Loire

**les dossiers de l'Archéo-Logis n°1**

CDERAD éditeur - 43150 Goudet

# Tephrostratigraphy of the Limagne revisited. Implications for Late Glacial and Holocene Prehistory

*Un cadre tephrostratigraphique réactualisé pour la préhistoire tardiglaciaire et holocène de la Limagne (Massif central, France)*

Gérard Vernet<sup>1</sup> et Jean-Paul Raynal<sup>2</sup>

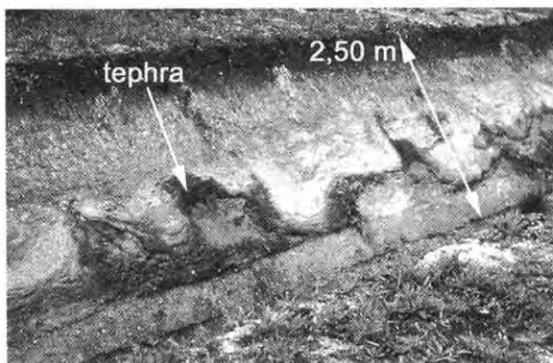
**Abstract:** from the Older Dryas to the Atlantic Period, ten pyroclastic formations originating from trachyandesitic and trachytic eruptions covered the plain of the Limagne d'Auvergne and have been preserved in various depositional contexts. They are useful isochronic markers for archaeologists examining their impact on prehistoric behaviours and settlements.

**Keywords:** tephras, Late-Glacial, Holocene, Limagne, Massif Central, Prehistory

**Résumé :** dix recouvrements de tephras, suffisamment importants pour avoir été préservés en stratigraphie dans des environnements sédimentaires divers, ont affecté la Limagne du Dryas ancien à l'Atlantique. Ils caractérisent des éruptions pour l'essentiel à magmas trachyandésitiques et trachytiques. Outre leur rôle incontestable de marqueurs isochroniques, ils incitent à reconsidérer l'impact du volcanisme de la Chaîne des Puys sur l'environnement des peuplements préhistoriques contemporains.

**Mots-clés :** tephras, Tardiglaciaire, Holocène, Limagne, Massif Central, préhistoire

Following preliminary research (Brousse *et al.*, 1969 ; Baudry et Camus, 1972 ; Camus, 1975) and a detailed synthesis based on a pluridisciplinary approach (Vernet, 1992), the tephrostratigraphy of Limagne has been completed (Vernet *et al.*, 1998) and detailed, identifying ten markers which are characterized by their facies, chemistry (in  $\text{SiO}_2/\text{Na}_2\text{O}+\text{K}_2\text{O}$  diagram) (Le Bas *et al.*, 1985) (figure 1), heavy mineral content and granulometry (Fischer, 1961). They have been directly TL dated or are associated with palaeosoils dated by radiocarbon, or occur within palynological sequences. From the oldest to the youngest, the identified tephras are :



**Figure 2:** the Cellule Tephra deformed by Late Glacial frost action at Cellule stratotype (photo G. Vernet).

1 - The Cellule Tephra. This is a coarse ash composed of trachyandesite, observed at Cellule within the Orange marsh and dated by palynology to the Ancient Dryas (Vernet and Paquereau, 1986, 1991 ; Vernet *et al.*, 1990). The mineralogical association is dominated by a green clinopyroxene (94.5%). It is strongly deformed by frost (figure 2), but one can estimate its thickness to be between 0.20 and 0.30 m. The source volcano is probably the Puy de La Nugère, during one of the oldest eruptive phases.

2 - CF1a/ CF1b Tephric Complex (La Barre Street fallout/ Les Roches fallout). About thirty observed sites distributed in the Limagne show that this is composed of a black basal level more or less developed (CF1a or La Barre Street fallout) followed by an upper grey level (CF1b or Les Roches fallout) (figure 6).

1. 7 rue du Mont Mouchet, 63320 Chadeleuf, AFAN, UMR 6042 et GDR 1122 CNRS

2. Institut de Préhistoire et de Géologie du Quaternaire, UMR 5808 C.N.R.S., Université de Bordeaux I, Avenue des Facultés, F-33405 TALENCE et GDR 1122 CNRS jpraynal@wanadoo.fr

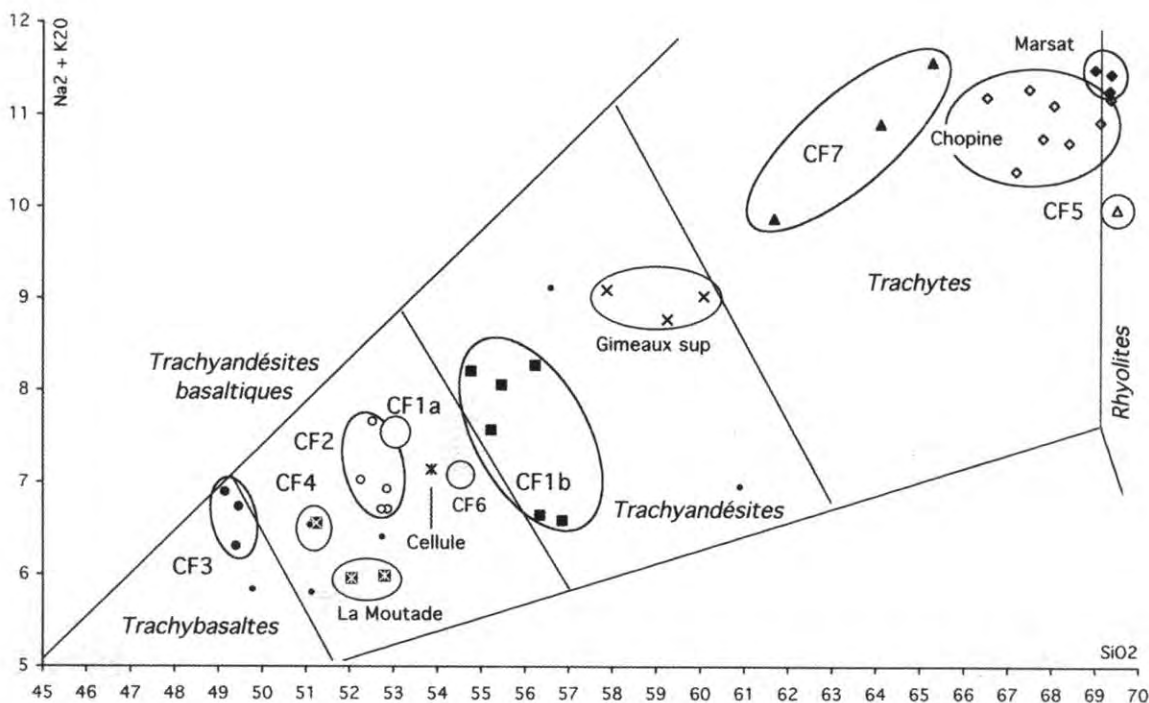


Figure 1: chemical composition of identified tephra in  $\text{SiO}_2/\text{Na}_2\text{O}+\text{K}_2\text{O}$  (weight%) diagram (after Le Bas et al., 1985).

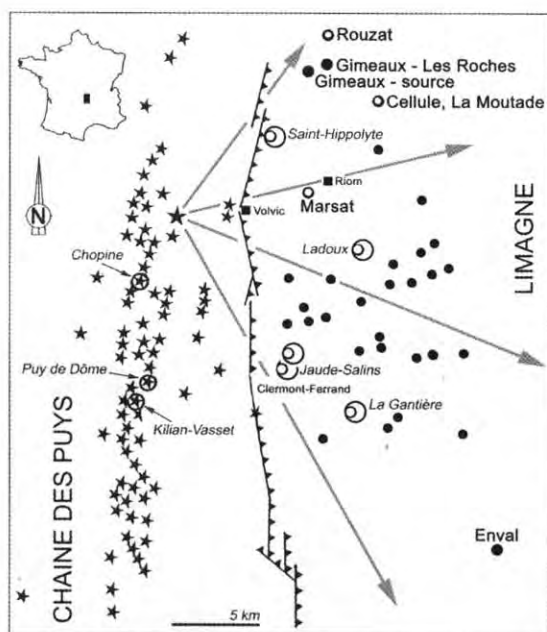


Figure 3: observation of CF1 Tephra in Western Limagne (black dots) within the volcanic regional context : Chaîne des Puys volcanoes (black stars) with some major trachytic domes (star circled) and Limagne basaltic maars (circled crescents). Minimum extension of the eruptive plume coming from Puy de la Nugère and responsible of CF1 Tephra dispersion is shown by grey arrows. Some other tephra stratotypes noted (circles).

CF1a, composed of basaltic trachyandesite, presents a facies in centimetric regular black beds grinding the existing topography with a basaltic composition. Its extension is less important than in CF1b : the observed sites are confined to the Clermont Basin (La Barre Street, Montjuzet Street, Blanzat Street) as well as in Gerzat-Cebazat and Le Brezet areas.

CF1b is bedded, with more or less thick lamina, composed of trachyandesite with brown amphibole as a characteristic mineral. It is composed of material accumulated in channels where intersected stratification can appear.

The facies are present in several stratigraphies in the Clermont (La Barre Street, Montjuzet Street...), in the Grande Limagne, in the Morge area (Gimeaux) and in the Magdalenian prehistoric site of Enval (figure 3). This covering has therefore been widespread in the Limagne and its average thickness is around 0.15m. A rapid calculation shows that 1500 m<sup>3</sup> ashes per hectare have covered the Limagne around 12000 years BP. Its impact on the biotopes is evidenced by the palynology (D. Vivent, unpublished). This tephric complex is the result of an eruption beginning with a single magma phase that was trachyandesitic basaltic in nature (CF1a), then continued with a mix of trachyandesitic basaltic and trachyandesitic magmas, from which derives the presence of the two scorias facies in CF1b (figure 4). Only Puy de la Nugère has provided lavas where one observes all stages of two mix magmas during an eruptive phase with a compatible age (Gourgaud & Camus, 1984). This tephric complex is dated by <sup>14</sup>C on the underlying paleosols (Ly 338/ AA-22073 = 11990 ± 90 and ARC 1697 = 11460 ± 90) and directly on organic fragments within the tephra (Gif TAN 91102 = 12010 ± 150 BP). The Les Roches Tephra has directly affected a Late Magdalenian living site, Abri Durif at Enval, 30 km to the southeast of its source (Vernet, 1992 ; Vernet & Raynal, 1995) : the uppermost layer is composed of a thin, regular, well-sorted fall (2cm thick) which adheres to the stone artefacts and faunal remains of the most recent Magdalenian occupation and thus seals the archaeological sequence.

3 - La Moutade Tephra is a black coarse ash with a basaltic trachyandesite composition seen at a number of locations in the western Limagne (Orange Marsh, Sardon valley and Villeneuve-les-Cerfs Marsh) (figure 5). The mineralogical association is clearly dominated by brown amphiboles (70

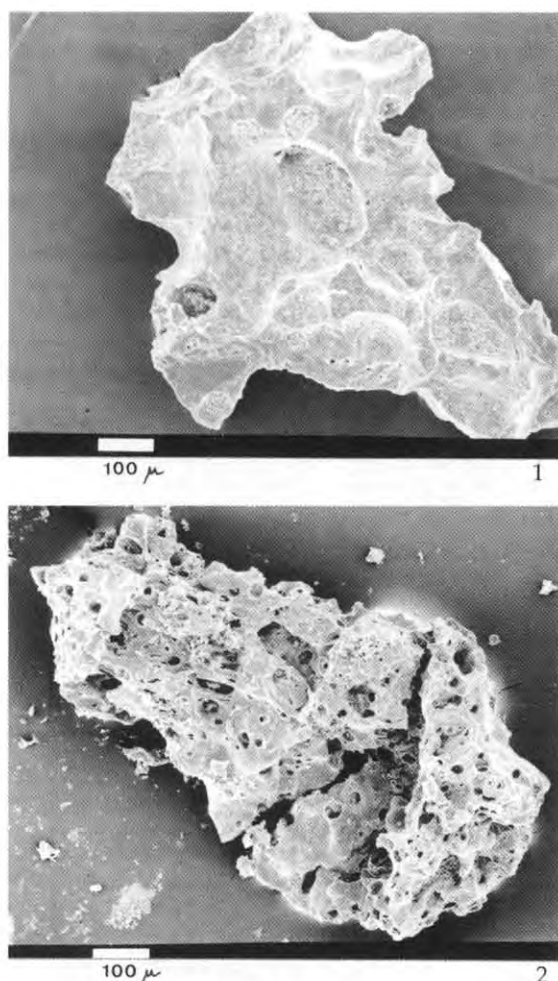


Figure 4: MEB observation of the two different types of scoriae in CF1b Tephra (see text).

to 85%). Puy de la Nugère is proposed as the source (Etlicher *et al.*, 1987; Juvigné *et al.*, 1991). Direct dating has been obtained by thermoluminescence at  $13700 \pm 1700$  (Cler TL 110), palynologic dating indicates the Alleröd and radiocarbon dating is  $11360 \pm 130$  BP (Ly 3733) (Vernet and Paquereau, 1986, 1991; Vernet *et al.*, 1990). Its impact on the vegetation has been evidenced by the palynology on the Villeneuve-les-Cerfs site (Raynal *et al.*, 1998).

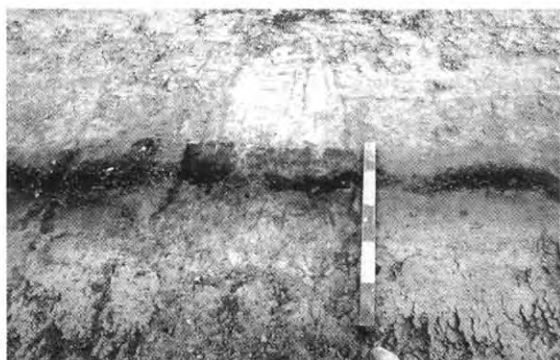


Figure 5: La Moutade Tephra within Alleröd palaeosol at La Moutade 1 (photo G. Vernet).

4 - The CF2 Tephra (or Descartes Street fallout). This occurs in centimetric light grey beds with numerous xenoclasts incorporated from the bedrock (figure 6) which lie in unconformity above CF1. It has a composition of basaltic trachyandesite and characteristic minerals are green clinopyroxene and brown amphibole. It is present in several places in the Clermont Basin, at Descartes Street, Sous-les-Vignes Street, Blanzat Street and Montjuzet Street. Dated directly by TL at  $8700 \pm 900$  (Cler 114) (Raynal *et al.*, 1989) and dated by palynology on another section near Clermont to the Pre-Boreal/Boreal boundary (Vernet *et al.*, 1996; Raynal *et al.*, 1998).

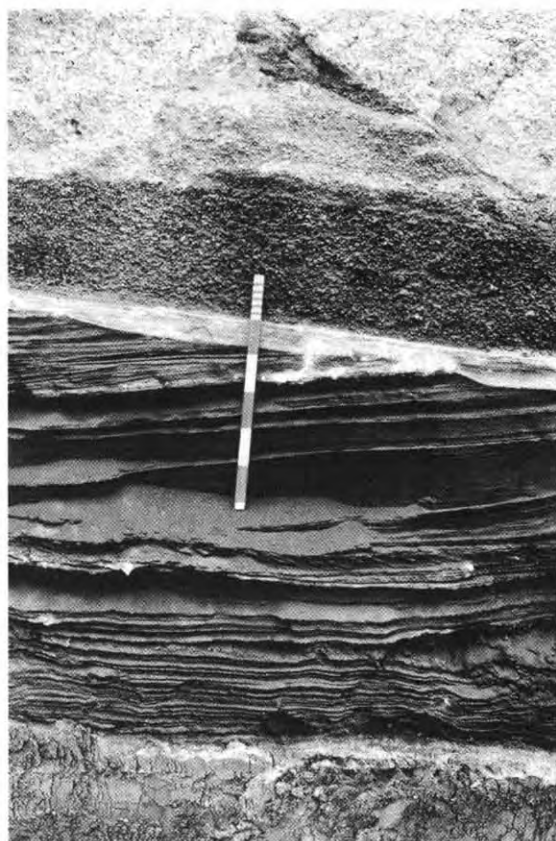
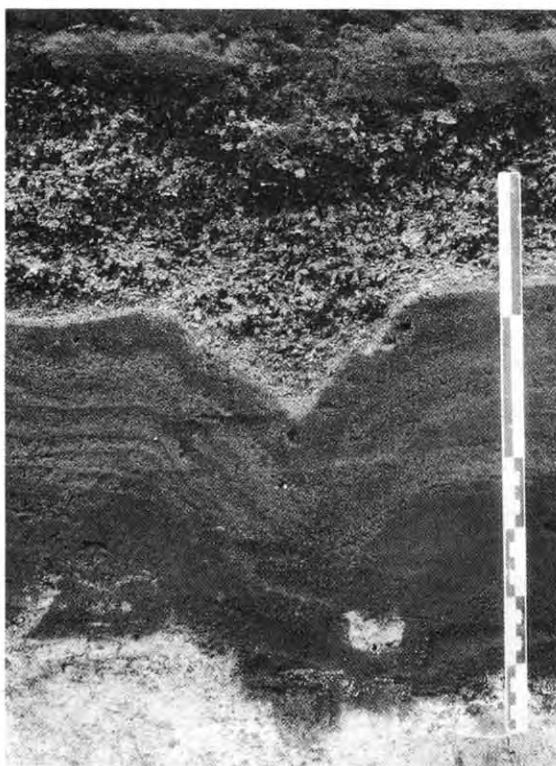


Figure 6: succession of trachyandesitic tephras in Clermont area, Rue de Montjuzet section. From bottom to top: CF1, CF2, CF3 and CF4 (photo G. Vernet).

5 - The CF3 Tephra (or Montjuzet Street fallout). This has a composition of trachybasalt, with characteristic minerals being green clinopyroxene and olivine. It is present in all the studied stratigraphies of the Clermont Basin and in the Cebazat-Gerzat area. It presents a very characteristic facies: at the bottom a thin reddish level typical of a phreatomagmatic blast effect, then a mix of products characteristic of a mixed eruption (magmatic and phreatomagmatic), finally vesicular scoriae characteristic of a strombolian plume fall (Vernet, 1992) (figure 7). These tephras are dated to the Boreal by palynology (Vernet *et al.*, 1996). For now their origin remains uncertain.

6 - The CF4 Tephra (or Blanzat Street ancient fallout), is composed of basaltic trachyandesite with characteristic minerals being clinopyroxene and olivine. Its facies is an alternation of beds rich in vesiculated scoriae and beds of finer granulometry rich in xenoclasts of the bedrock and cracked marl fragments (strongly phreatomagmatic





**Figure 7:** succession of trachyandesitic tephras in Clermont area. From bottom to top: CF1a, CF1b and CF3 divided in two parts: thin blast layer at the bottom and Strombolian fall at the top (photo G. Vernet).

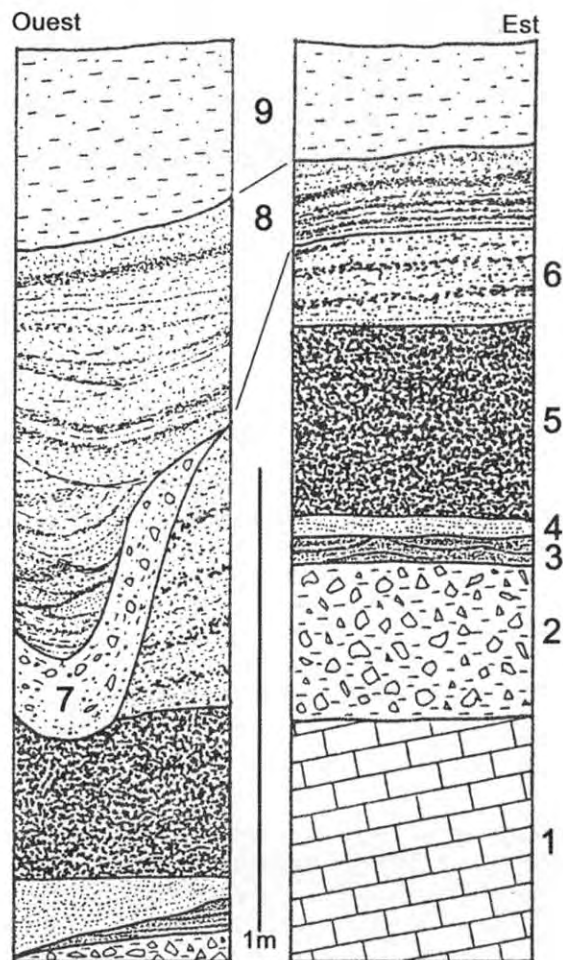
characteristics). They are present at Blanzat Street and Montjuzet Street (figure 6). Their chronological position is identical to that of CF3, at the limit of the Preboreal/Boreal (Vernet *et al.*, 1996). The origin is uncertain but one can suppose that they come from the same structure as CF3.

7 - The CF5 Tephra (or Sous-les-Vignes Street fallout), is a coarse ash forming a centimetric lamina (0.03m) discontinuous, cream to pastel rose, with a composition of rhyolite (figure 1), with characteristic minerals being green clinopyroxene (55%), zircon (16%), brown amphibole (14%) and apatite (10%). This lamina is present in a few stratigraphies in the Clermont Basin (Sous-les-Vignes Street) and in the Limagne near Gerzat (Daugas et Tixier, 1975 ; Juvigné *et al.*, 1992 ; Raynal *et al.*, 1998). It is dated palynologically at the Boreal/Atlantic limit (Vernet *et al.*, 1996). The Kilian Crater has been proposed as source volcano (Vernet, 1992) after the lack of sphene which excludes the Puy Chopine (Bentor, 1955) and the stratigraphic position which excludes the Puy de Dôme, older after the TL dates (Faïn *et al.*, 1986, 1991). But the Puy Vasset is a potential source (Michon, 1996). A very broad dispersal has been proposed for the trachytic tephra of the Chaîne des Puys (Puy de Vasset or Kilian Crater) of Boreal age (Juvigné, 1991, 1992).

8 - The Marsat Formation, eruptive and epi-eruptive born of a trachytic structure, formed of a mud-flow, torrential alluviums and ash levels, overlays two epipalaeolithic archaeological layers discovered at les Pradelles in 1995 (Vernet *et al.*, 2001). The geochemistry lies on the trachyte/

rhyolite limit (figure 1) and the mineralogy of these products (presence of sphene) allows them to be sourced without ambiguity to the Puy Chopine, more than 11 km distant. Carbonized branches, discovered at the base of eruptive products of this volcano in proximal position (approximately 1 km from the protrusion), have given a radiocarbon age of  $8464 \pm 70$  BP, confirming previous results (Camus 1975, Raynal *et al.* 1981, Juvigné 1987). The importance and the nature of eruptive deposits from the Puy Chopine discovered at Marsat radically change the vision that one had until now of trachytic eruptions in the Chaîne des Puys : a syneruptive mud-flow hit the Limagne more than 11 km from its emission point around 8500 year BP.

9 - The CF6 Tephra (Blanzat Street recent fallout), shows bedded levels with a fine granulometry where alternate dark and pale beds, rich in xenoclastes, composed of trachyandesite. Characteristic minerals are green and brown clinopyroxenes. It has only been observed in one place of the Clermont Basin (Blanzat Street) (figure 8) but could also have been present in the Gerzat area. The source volcano is doubtless the Puy de Pariou (Vernet, 1992), relating particularly to the main lava flow episode in the history of this volcano dated of  $8180 \pm 810$  (Guérin, 1983).



**Figure 8:** rue de Blanzat section. 1: Oligocene marls. 2: Diamicton. 3: CF1 tephra. 4: CF2 tephra. 5: CF3 tephra. 6: CF4 tephra. 7: Ancient colluvium. 8: CF6 tephra. 9: Recent colluvium.

10 - The CF7 Tephra is represented by centimetric angular fragments of trachyte (figure 9) noticed on several sections studied in the North-east, in the East and the South of Clermont-Ferrand, above the CF6 fallout and below an Ancient Neolithic archaeological layer ( $^{14}\text{C}$  ETH-17946 =  $5405 \pm 75$  BP). The sole trachytic structure with lava possessing comparable contents is the Puy de Clierzou.

The content analysis of radioelements  $^{232}\text{Th}$  and  $^{214}\text{U}$  confirms this origin (Miallier, pers. com). The morphology of trachytic fragments suggests that they come from the crust of a dome. They are therefore distal evidences of a primitive dome explosion of the Puy de Clierzou and form the more recent tephric covering in the Limagne.



Figure 9: CF7 Tephra angular fragments of trachyte sampled in different locations of Western Limagne (photo G. Vernet).

11 - Other Tephras - Two tephras of unknown origin are still to be dated precisely : the *Gimeaux Upper Tephra*, with a trachyandesitic composition, deposited during the Late-Glacial *sensu lato*, and the *Rouzat Upper Tephra*, composed of trachybasalt, probably deposited at the beginning of the Holocene (Vernet, 1992).

12 - Conclusions - Late Glacial and Holocene volcanic activity of the Chaîne des Puys had a severe impact on the Limagne plain, especially during the Alleröd and the Boreal : there are no paleosoils between tephras CF2, CF3 and CF4, which are followed by several trachytic volcanic products leading up to the beginning of Neolithic times. Other more recent tephras have been observed on the Dôme

plateau (Juvigné *et al*, 1986) but have not been recognized in the plain. Tephras have been preserved in various depositional contexts and have contributed to filling the Limagne hollows and greatly disturbing their regular evolution. A detailed tephrostratigraphic framework has thus been established. Archaeologists have now to determine precisely the consequences for prehistoric human groups.

**Acknowledgements:** this work was funded by Région Aquitaine and Région Auvergne within the *Espaces volcaniques préhistoriques* project of GDR 1122 CNRS *Hommes et volcans avant l'Histoire*. Authors particularly thank Guy Camus and dedicate this work to his memory.

## References

- BAUDRY D. & CAMUS G., 1972. Les projections volcaniques de la Chaîne des Puys et leurs utilisations. *Bull. du B.R.G.M.*, 2), II, 2, 1-52.
- BENTON Y.K., 1955. *La chaîne des Puys (Massif Central français) recherches géologiques et pétrographiques*. Bull. du Service de la Carte Géologique de la France, N°242, Tome LII, 1954, 787 p., fig. 75, tabl. CLXX.
- BROUSSE R., DELIBRIAS G., LABEYRIE J., RUDEL A., 1969. Éléments de chronologie des éruptions de la Chaîne des Puys. *Bulletin de la Société géologique de France*, 7<sup>e</sup> série, XI, 770-793.
- CAMUS G., 1975. *La Chaîne des Puys : étude structurale et volcanologique*. Annales Scientifiques de l'Université de Clermont, N°56, Géol. Minéral., fasc. 28, fig. 68, 322 p.
- DAUGAS J.P. et TIXIER L., 1975. Variations paléoclimatiques de la Limagne d'Auvergne. *Bulletin de l'Association française pour l'étude du Quaternaire*, 47, 203-235.
- FAÏN J., ERRAMLI H., MIALLIER D., MONTRET M., SANZELLE S., 1986. Datation par thermoluminescence d'un appareil volcanique trachytique : le Puy de Dôme. *11<sup>e</sup> Réunion des Sciences de la Terre*, Clermont-Ferrand, S.G.F. Ed., Paris, 63.
- FAÏN J., ERRAMLI H., MIALLIER D., MONTRET M., SANZELLE S., 1991. Datation par thermoluminescence d'un appareil volcanique trachytique : le Puy de Dôme. in J.P. Raynal et D. Miallier : *Datation et Caractérisation des Milieux Pléistocènes*, Cahiers du Quaternaire, CNRS Ed., n° 16, 53-62.

- GOURGAUD A. et CAMUS G. (1984) - Magma Mixing at La Nugère Volcano (Chaîne des Puys, Massif Central, France) : Role in the Trachyandesites Genesis. *Bull. Volcanol.*, 47/4, p. 781-805.
- ETLICHER B., JANSSEN C., JUVIGNÉ E., VAN LEEUWEN J.F.N. (1987) - Le Haut Forez (Massif Central, France) après le pléniglaciaire würmien : environnement et tephra du volcan de la Nugère. *Bulletin de l'Association française pour l'étude du Quaternaire*, 4, 229-239.
- FISCHER R.V., 1961. Proposed classification of volcanoclastic sediments and rocks. *Geological Society of America Bulletin*, 72, 1409-1414.
- GUÉRIN G., 1983. *Thermoluminescence des plagioclases. Méthode de datation du volcanisme. Applications aux domaines volcaniques français : Chaîne des Puys, Mont Dore et Cézalier, Bas Vivarais*. Thèse d'état, Université Pierre et Marie Curie, Paris, 253 p.
- JUVIGNÉ E., 1987. Un marqueur stratigraphique à large dispersion dans le Massif Central français : la retombée du volcan Chopine vieille d'environ 8500 ans B.P. *C. R. Acad. Sc.*, Paris, t. 304, série II, n° 4, 187-190.
- JUVIGNÉ E., 1991. Distribution de vastes retombées volcaniques originaires de l'Eifel et du Massif Central aux temps post-glaciaires dans le NE de la France et les régions voisines. *C. R. Acad. Sc.*, Paris, tome 312, Série II, 415-420, 2 fig., 2 tabl.
- JUVIGNÉ E., 1992. Distribution of widespread Late Glacial and Holocene tephra beds in the french Central Massif. *Quaternary International*, 13/14, 180-185.
- JUVIGNÉ E., BASTIN B., GEWELT M., 1986. Découverte de retombées volcaniques d'âge Holocène dans la Chaîne des Puys septentrionale (Massif Central, France). *Revue des Sciences naturelles d'Auvergne*, n° 52, 33-36.
- JUVIGNÉ E., KROONENBERG S.B., WELDKAMP A., EL ARABI A., VERNET G., 1992. Widespread Alleröd and Boreal trachyandesitic to trachytic tephra layers as stratigraphical markers in the Massif Central, France. *Quaternaire*, 3 (3-4), 137-146.
- LE BAS, M.J., LE MAITRE R.W., STRECKEISEN A., ZANETTIN B. (1986) - A chemical classification of volcanic rocks based on the total alkali-silica diagram. *J. Petrology*, 27, 745-750, Tulsa.
- MICHON L., 1996. *Le Cratère Kilian et le Puy Vasset : mécanismes éruptifs et distinction des produits proximaux et distaux. Comparaison avec le cratère-lac Pavin et le Puy Chopine*. Mémoire de travail d'étude et de recherche, Université de Clermont II, 20 p.
- RAYNAL J.P., PAQUEREAU M.M. et DAUGAS J.P., 1981. Contribution à l'étude chronostratigraphique des formations volcano-sédimentaires de la Chaîne des Puys. *Nouv. Arch. Mus. Hist. nat. Lyon*, Fasc. 19, 59-64, 2 fig.
- RAYNAL J.P., MIALLIER D., VERNET G., FAÏN J., CAMUS G., MONTRET M., DAUGAS J.P., SANZELLE S., 1989. Extension de la datation par thermoluminescence à une retombée trachy-andésitique rapportée au Puy de Pariou (Chaîne des Puys, France). *C. R. Acad. Sc.*, Paris, t. 308, Série II, 1547-1552.
- RAYNAL J.P., VERNET G., VIVENT D., 1998. Des volcans et des hommes depuis le dernier interglaciaire en Basse Auvergne (Massif Central, France). in *Albore-Livadie C. e Ortolani F. ed, Il sistema uomo-ambiente tra passato e presente*, Edipuglia, 197-220.
- VERNET G., 1992. *Message du volcanisme régional dans les formations quaternaires de Limagne occidentale (Massif central français). Minéraux denses et retombées*. Thèse de l'Université de Bordeaux I, n° 724, 335 p.
- VERNET G. et PAQUEREAU M.M., 1986. Le cours moyen de la Morge (Puy-de-Dôme) au Pléistocène : éléments de chronologie et de paléoenvironnements. *11ème Réunion des Sciences de la Terre*, Clermont-Ferrand, S.G.F. Ed., 181.
- VERNET G. et PAQUEREAU M.M., 1991. Le cours moyen de la Morge et de ses affluents (Puy de Dôme, France) au Pléistocène : éléments de chronologie et de paléoenvironnements. in *J.P. Raynal et D. Miallier : Datation et caractérisation des milieux pléistocènes*, Cahiers du Quaternaire, n° 16, CNRS. Ed., 431-449.
- VERNET G. et RAYNAL J.P., 1995. La Téphra des Roches, marqueur du volcanisme contemporain de la fin du Magdalénien dans le Massif Central français. *C. R. Acad. Sc.*, Paris, t. 321, Série IIa, 713-720.
- VERNET G. et RAYNAL J.P., KIEFFER G., CAMUS G., GUADELLI J.L., VIVENT D., MIALLIER D., SANZELLE S., PILLEYRE T., FAÏN J., MONTRET M., 2001 - L'éruption trachytique du Puy Chopine (Puy de Dôme, France) : impacts proximaux et distaux et implications écoarchéologiques (ce volume).
- VERNET G., RAYNAL J.P., MIALLIER D., PILLEYRE T., FAÏN J., SANZELLE S., MONTRET M., 1990. La retombée de la Moutade, marqueur stratigraphique de l'Alleröd en Limagne septentrionale (Massif Central, France). *C. R. Acad. Sc.*, Paris, t. 310, série II, 1077-1082.
- VERNET G., RAYNAL J.P., VIVENT D., 1996. La téphra de la rue Sous-les-Vignes, marqueur en Limagne du volcanisme trachytique postglaciaire de la Chaîne des Puys. *C. R. Acad. Sc.*, Paris, t. 323, série IIa, 325-331.
- VERNET G., RAYNAL J.P., FAÏN J., MIALLIER D., MONTRET M., PILLEYRE T., SANZELLE S., 1998. Tephrostratigraphy of the last 160 ka in Western Limagne (France). *Quaternary International*, vol. 47/48, 139-146.