



HAL
open science

Building comparable synthetic health-related indicators of air quality in cities

Christina Aschan-Leygonie, Sophie Baudet-Michel

► **To cite this version:**

Christina Aschan-Leygonie, Sophie Baudet-Michel. Building comparable synthetic health-related indicators of air quality in cities. *Air Pollution XVIII*, May 2010, KOS, Greece. pp.261-275. halshs-00551471

HAL Id: halshs-00551471

<https://shs.hal.science/halshs-00551471>

Submitted on 3 Jan 2011

HAL is a multi-disciplinary open access archive for the deposit and dissemination of scientific research documents, whether they are published or not. The documents may come from teaching and research institutions in France or abroad, or from public or private research centers.

L'archive ouverte pluridisciplinaire **HAL**, est destinée au dépôt et à la diffusion de documents scientifiques de niveau recherche, publiés ou non, émanant des établissements d'enseignement et de recherche français ou étrangers, des laboratoires publics ou privés.

Building comparable synthetic health-related indicators of air quality in cities

C. Aschan-Leygonie¹ & S. Baudet-Michel²

¹*Université de Lyon, UMR Environnement, Ville, Société, France*

²*Université Paris-Diderot, UMR Géographie-cités, France*

Abstract

Working on the relationship between respiratory health and atmospheric pollution in French cities led us to adopt a perspective that considers the risk for a single city of showing high levels of respiratory health problems. The risk level in a city is dependent on population vulnerability, the city context and pollutant levels. This presentation focuses on the observation of the unequal pollution hazards in French cities on a macro-scale. The study field covers 34 French cities of more than 100,000 inhabitants. The aim is to build comparable synthetic indicators of atmospheric pollution that consider the temporal and spatial diversity within a city, and to compare the different results. The focus is on the results for nitrogen dioxide (NO₂) over the 2007 and 2008 winter season. The paper presents the database and methodology used. The findings show that the spatial structure of air pollution between the cities remains globally the same whatever the indicator chosen. However, the results also show significant changes in the relative position of certain cities. When comparing the more conventional indicator calculated from mean daily concentrations in urban monitoring sites with an indicator also taking into account the concentrations observed in roadside stations, relative changes appear for more than ten cities. These findings highlight the importance of the criteria used in the choice of the indicators, and the benefit of using a set of complementary indicators in epidemiological studies.

Keywords: air pollution, spatial variation, indicator, cities, environmental epidemiology

1 Introduction

This paper is part of a research program that aims at investigating the relationships between respiratory health and urban environment, at both local and regional level, for a large set of 56 French urban areas, from 100,000 inhabitants to 10 million. Following the recommendations of Huang and Batterman (1), who highlight the fact that exposure assessment practices in epidemiological studies are highly dependent on the geographical exposure indicators, the aim is to compare different indicators. The comparison is based on the results obtained from different synthetic indicators regarding their levels of air pollution. Two questions are addressed: How can one build comparable pollution indicators, at the global level of a city, that take into account the strong spatial variety in the pollution level within a city? How can one build comparable pollution indicators that take into consideration the daily pollution cycle with alternating peaks and lows? The paper focuses on cities of more than 100,000 inhabitants, defined as built-up areas, over the 2008 winter season (December 2007 to February 2008), as this is a high season for respiratory disease with no confounder such as pollens. The methodology is applied to nitrogen dioxide (NO₂) as this is reported to be one of the pollutants most closely related to respiratory disease and is the best-surveyed pollutant within urban areas in France.

There are two main types of epidemiological study that consider the link between air pollution and health in urban environments. The first type is based on an exploration of the relationship over a time period at city level, and although the study often includes different cities, the aim is not to compare the urban situations.

In the early 1990s, the APHEIS studies in Europe (2,3) and PSAS (4) studies in France focused on the short-term relationship between morbidity and mortality levels for cardiovascular and respiratory diseases and levels of pollutants such as sulphur dioxide, nitrogen dioxide, ozone and particles of more than 10 or 2.5 microns. The relationship between the pollutant time-series and health time-series was calculated using Poisson regressions. The health risk was calculated in each city usually for a particle size elevation of 10 µg/m³: those risk levels rarely exceeded 1.5% (4).

The second type, which has been developed more recently (5), investigates health inequalities within cities and their link to air pollution. The local air pollution is estimated with a dispersion model with input data such as emission inventories, meteorological data, and concentrations of background pollution, and sometimes pollution registered by proximity monitors.

The present research aims to assess a city's global level of pollution, in order to compare it with other comparable French cities.

2 Using the BDQA database to build comparable urban pollution indicators

In France, air pollution monitoring has been obligatory since 1998 for cities with more than 100,000 inhabitants. ADEME (Agence De l'Environnement et de la Maîtrise de l'Energie) collects the pollutant concentration levels measured through a national network of independent agencies, the AASQA (Associations Agréées de la Surveillance de la Qualité de l'Air). Hourly mean concentrations are gathered in the BDQA (Base de Données sur la Qualité de l'Air) and made available by ADEME.

NO₂ is the best-surveyed pollutant with 250 monitors spread out across the 56 cities in 2009 (fig 1). The maximum numbers of stations are found in large cities such as Paris (37), Lyon (16), Douai-Lens, Marseille (11 each) and Lille (10). Minimum numbers (2 monitors per city) are found in smaller places such as Nantes, Amiens, Avignon and Valence.

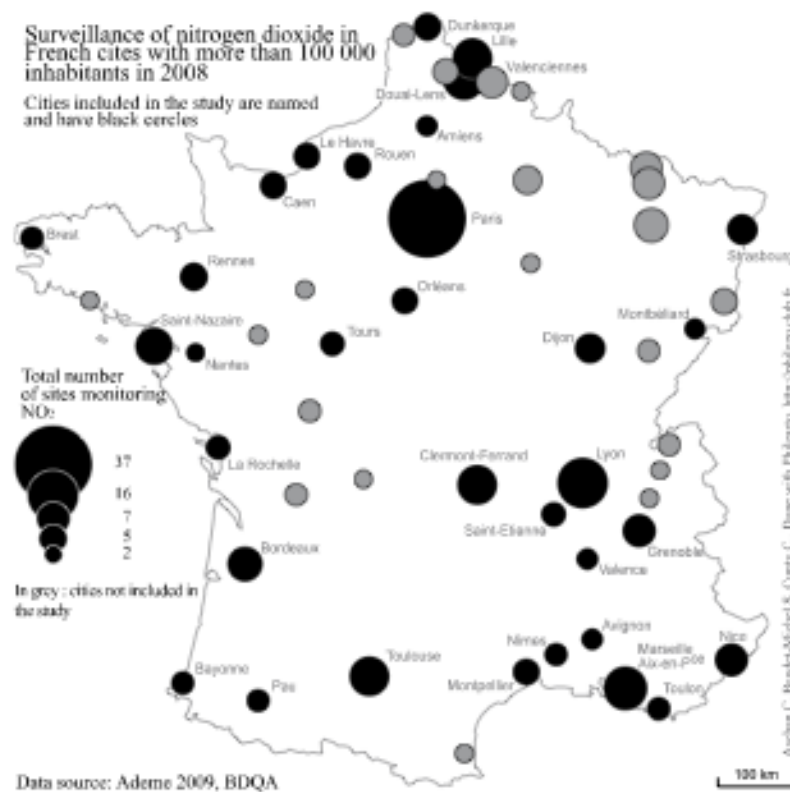


Figure 1: Surveillance of nitrogen dioxide in French cities with more than 100,000 inhabitants (ADEME, BDQA, 2008)

Survey monitors are located in three main location types: background sites, proximity sites and specific sites. The background monitoring sites measure the level of pollution that cannot be avoided by the population 24 hours' a day. They are located away from specific and important sources of pollution (in school playgrounds, park areas, pedestrian sites, etc.). The proximity stations measure pollution close to pollution sources, i.e. traffic if along a busy road, or industrial if next to an industrial plant. Specific stations will be located close to particular sources of pollution, such as airports, railway stations, incinerators. In 2009, French cities had 130 urban sites, 50 roadside sites, 50 suburban sites and 20 industrial locations monitoring nitrogen dioxide.

The indicators are built from concentrations of NO₂ observed in two types of site: urban background and roadside sites. As only 35 urban areas host roadside monitors, one urban area (Calais) lacks an urban background monitor and one city has too many missing values throughout the study period (Thionville), the sample for this study will be reduced to 34 cities (fig 1). Thus, the BDQA (Base de Données sur la Qualité de l'Air) database opens up the possibility of building comparable synthetic indicators on a large sample of cities that address the diversity of pollution situations.

3 Estimating ambient air pollution: a method integrating spatiotemporal variation

The construction of indicators allowing the comparison of NO₂ levels between cities should integrate both the spatial and temporal variation in pollutant concentrations in order to better approximate global exposure to pollution.

3.1 Dealing with daily cycles: making use of four parameters

As shown for Lyon (fig 2), all cities feature two peaks with high concentration of NO₂ and two lows. The time of day at which the peaks and lows occur varies slightly between cities, but the cycle observed in Lyon (peaks around 7-10 am and 5-8 pm and lows around 2 to 5 am and 1 to 3 pm) is fairly characteristic of French urban areas (6). Therefore, parameters such as mean and median are not accurate synthesisers of daily pollution and other parameters have to be used. We believe comparison of air pollution in cities might be improved if observed according to different parameters. A set of four different parameters were created in order to estimate the global NO₂ concentration level for each city: high and low percentiles and daily peaks and lows. Firstly, daily average values for each city were calculated from peak hours alone over winter 2008 for urban and roadside sites. Secondly, another set of daily mean values, this time from the lowest concentrations, was calculated for each of the 91 days of the study period, for urban and roadside sites. Thirdly, for each day of winter 2008, the 90th percentile of the hourly NO₂ concentrations was determined. Finally, the 10th percentile of the hourly average was determined per day over the three month period.

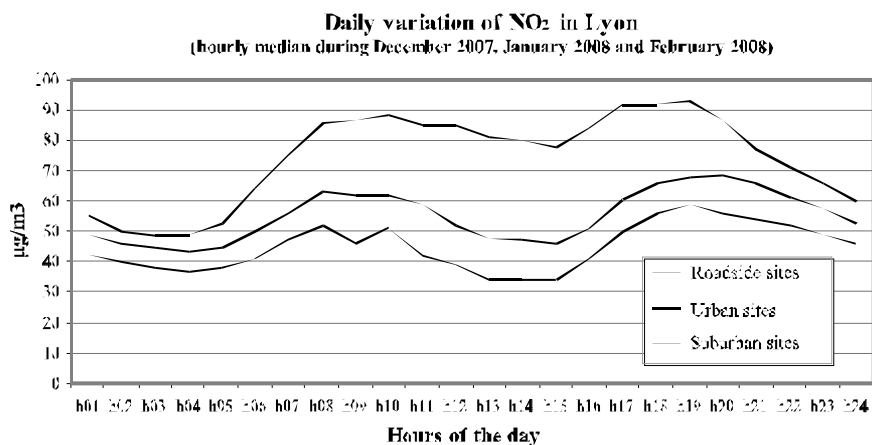


Figure 2: Daily variation of hourly median concentrations of NO₂ (Lyon, winter season 2007-2008) (data source: ADEME, 2009)

3.2 Addressing the spatial variability of NO₂ concentration

As shown for Lyon, nitrogen dioxide levels do not only differ from one hour to the next, but also naturally between different monitor types (figure 3). The averages observed in urban background sites are much lower in general and present a more homogenous profile than the traffic-related sites. The two urban monitors (Saint Just and Gerland) located within Lyon city centre present a mean value of the peak hours during winter 2008 of around 65 µg/m³, whereas the traffic-related sites register much higher means over the period (> 80 µg/m³). The roadside sites show greater differences between the sites as they are directly affected by the intensity of the passing traffic (Garibaldi and the site near the A7). Surprisingly, the variability within the traffic-related sites over this period is generally lower for the traffic sites (relative standard deviation) of around 0.4 in urban sites and between 0.2 and 0.3 in roadside sites, except for the Grand Clément and Eastern ring road where variations are high).

A hierarchical ascendant classification (HAC) was used to evaluate the global differences in NO₂ levels measured in urban background sites and roadside sites. The classification was carried out on the daily average of the eight-hour peak (7-10 am and 5-8 pm) during winter 2008. The dendrogram using Ward's criterion showed a perfect dichotomy between the NO₂ concentrations observed in background monitoring sites (LYCe, ST J to COTI) on the one hand, and in traffic-related sites (BERT to GARI) on the other hand. These findings and the fact that the spatial variability of NO₂ may mainly be allocated to two categories of land use (main roads and densely built-up areas) suggest that it is relevant to estimate the global air pollution of a city including the two monitor types.

Our work is based on the hypothesis that measurements in one type of monitoring site are representative of all those locations with similar features: urban background monitors are representative of all areas with a population density above 3,000 inhabitants per square kilometre, more than 100 meters away from a road with 4,000 to 7,000 vehicles per day and at least 200 meters away from a road with more than 7,000 vehicles per day. In the same way, ambient air concentrations measured in a roadside site are considered representative of all zones near to a road with more than 4,000 vehicles per day. Suburban background monitors and monitors located close to industrial plants have not been included in the study for two reasons: the location criteria are defined in such a way that these monitors survey specific pollutions (for example photochemical pollution in suburban sites) and few cities monitor NO₂ in suburban or industrial areas.

In order to estimate the share of the two types of area within a city we used GIS. Two categories of land use defined by CORINE Land Cover (250 m grid-based database) were used to estimate the share, within the city limits, of continuous urban built-up areas (combined with a population density above 3,000 inhabitants per square kilometre) and road networks and associated land. A 50-meter buffer zone (7) from the roadside of the larger roads was applied, and for the urban canyon streets a smaller buffer zone was used (25 meters). Tested on Lyon, it resulted in a respective share of 70% for the continuous urban built-up areas and 30% of the roadside zones. Thus, to build up each global city indicator of NO₂ concentration levels, the levels in both types of monitoring station were weighted; a coefficient of 0.7 was applied for urban monitors and 0.3 for roadside monitors.

4 Results

Six parameters using median values were calculated in order to compare the cities' relative positions with regard to NO₂ concentrations. All were calculated for the 2008 winter. The parameters relying on low and peak hours and 10th and 90th percentile were calculated and used in order to produce a synthetic global indicator accounting for the daily variability in NO₂ concentration, based on the use of traffic and urban monitors. Two other synthetic parameters, similar to those use in epidemiological studies such as APHEIS, were calculated: one using daily means for urban monitors only, the other using daily means for traffic and urban monitors.

| Variable name | Mean | Standard deviation | Minimum | Maximum |
|-------------------------------|--------|--------------------|---------|---------|
| Médiane_low urb/traf pond 6h | 29.297 | 8.432 | 17.000 | 51.000 |
| Médiane_peak urb/traf pond 6h | 51.365 | 11.103 | 31.800 | 73.400 |
| MédianesP10 | 18.568 | 7.428 | 8.100 | 37.600 |

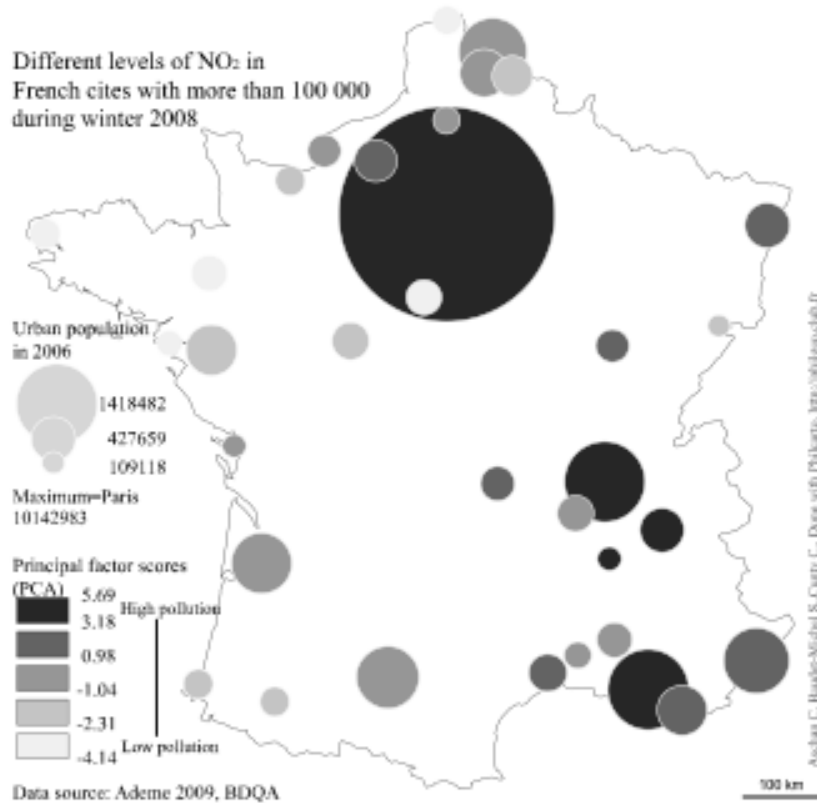
| | | | | |
|-------------------------------------|--------|--------|--------|--------|
| MédianeP90 | 61.904 | 12.848 | 38.800 | 85.900 |
| Médiane_peak urb 6 h | 44.109 | 10.851 | 22.800 | 70.300 |
| Médiane_moy jour 24 h urb | 33.621 | 8.892 | 15.700 | 55.200 |
| Médiane_moy jour 24 h urb traf pond | 39.337 | 9.575 | 23.080 | 63.520 |

Table 1 : Parameters to describe NO₂ concentration in cities

The first observation when comparing the parameters (table 1) is the obvious fact that the mean levels differ from one parameter to another. The introduction of traffic monitors into the calculations leads to an increase in all levels observed for the median of the daily means: the minimum rises from 15.7 ug/m³ to 23 ug/m³, the maximum from 55.2 to 63.5 ug/m³ and the mean from 33.6 to 39.3 ug/m³. Other parameters calculated on traffic and urban monitors show the highest level of concentration for the 90th percentile (61.9 ug/m³) and the peak hours (51.3 ug/m³) and the lowest level for the 10th percentile (18.6 ug/m³) and the low hours 29 ug/m³. Very high linear correlations (>0.84) are shown between all parameters (except with P10 R²=0.7).

In order to assess the pollutant levels within the cities a principal component analysis was conducted on the six parameters that render the daily variability of NO₂ concentration levels. The PCA gives rise to a very strong first factor explaining 92% of interurban variations in NO₂ levels. This very high variance shows that the results obtained by the different indicators are very similar. This result refutes our hypothesis that introducing spatial variability and not using mean values would radically change the results. It's the second axis that explains 8% of the inter-urban variations that shows in what way the choice of the indicators is important. This axis shows that the main difference is to be found between the indicators that are based on peak hours and those calculated from the daily lows. The factor scores place opposite each other cities with high peaks and low levels of NO₂ during the daily lows (at night and early afternoon) like Toulon, Nîmes and Clermont-Ferrand, to cities with low levels in peak hours and high concentrations during the daily lows (Strasbourg, Dijon, Le Havre, Rouen). The first component can be used to characterise the cities regarding their global pollutant level (fig.3). Lyon, Valence, Paris, Marseille, Grenoble, Nice and Montpellier stand out as the most polluted cities (high scores for all indicators), opposite St-Nazaire, Brest, Rennes, Dunkerque, Orléans, Tours, Bayonne for the latter (low scores for all indicators). Around the gravity centre eleven cities with medium concentrations, like Bordeaux, Toulouse, La Rochelle. A regionalisation of the urban system appears that produces three classes of cities: the south-eastern ones, the north-western ones, the south-western ones and finally Paris, Lyon and Valence.

Figure 3 : Cities position on the first axis of the PCA (4 parameters to describe their pollution level : peak and low hours, P10 and P90)



A comparison between the spatial organisation obtained from the parameters using only urban monitors and using both traffic and urban monitors (weighted according to land use) showed significant changes of ranking for two groups of cities. The parameter used here to calculate the two synthetic indicators was in both cases the daily mean concentration, as is usual for epidemiological studies. The mean level for the sample of cities rises from 33.6 (urban monitors only) to 39.3 $\mu\text{g}/\text{m}^3$ (urban and traffic). The minimum and maximum values show similar elevations. The comparison between these two indicators shows that cities such as Valence, Paris, Nîmes, Avignon, Rouen, Montpellier and Nice not only show higher NO₂ concentrations, but their relative position in the sample of cities also changes, appearing more polluted in relation to the other cities than previously when using only urban monitors. Meanwhile Toulon, Amiens, Dunkerque, Dijon, Lille and Montbéliard appear to have NO₂ concentration that, although higher, rank them better in relation to the other cities. To us these results show that the use of urban, or urban and roadside monitors significantly changes the geography of polluted cities. It broadens differences between western (least polluted), south-eastern (most polluted) and south-western (averagely polluted)

cities. Therefore, we believe that the traffic monitors should not be systematically put aside in epidemiological analysis.

5 Discussion

The global indicators proposed in this paper have been built using a set of monitors characterising different location types in order to respond to the fact that the use of one sole background monitor may not reflect the situation of large cities and may lead to accepting the zero hypothesis concerning the relationship between pollution level and morbidity.

The introduction of traffic monitors into the analysis, the use of most city monitors, responds to the remark made by Katsouyanni *et al.* (8) that a reliable representation of human exposure to atmospheric pollution would involve at least three monitors (regardless of the type of site). This allows a more accurate assessment of the diversity of inner city pollution. As shown in 3.2., traffic monitors and urban monitors capture different pollution situations that both reflect the diversity of urban spaces. As assumed by a number of authors (2,3,4), this paper demonstrate the roadside and urban monitor's global indicator shows a rise (compared to urban monitors alone) in the NO₂ concentration level of all cities. However, this rise may be a better estimation of the global exposure situation of the city than the estimation from background monitors alone. Boudet, Zmirou (9) compared PM pollution exposure using mobile monitors and the AASQA stationary monitors. Mobile monitors were implemented by a set of individuals living and working in different parts of Grenoble city. The results showed that including proxy monitors in the analysis enabled an estimation of pollution levels closer to that of the mobile monitors than the observation of background monitors alone.

The interurban spatial structure remains globally the same whatever the indicator chosen. However, the results also show significant changes in the relative position of several cities. Comparing the more conventional indicator calculated from daily mean concentrations in urban monitoring sites with an indicator taking into account the concentrations registered by roadside monitors as well as urban ones introduces changes for almost a third of the cities. These findings highlight the importance of the criteria used in the choice of the indicators, and the benefit of using a set of complementary indicators, like the one proposed in the PCA. The use of daily means also appears to be less accurate than the use of for example percentiles.

Limits to our methodology are due to the comparative ambition that lead to the examination of a large set of cities and therefore do not allow the use of detailed information such as NO₂ cadastre and mobile measurement series or results from dispersion models.

Firstly, the hypothesis that areas with similar location features have a similar level of NO₂ pollution can be discussed. Even though the HAC showed a clear

similarity between the pollutant levels observed in urban background locations on the one hand, and in traffic-related sites on the other hand, clearly there are numerous zones within a city for which the hypothesis of homogeneous pollution level derived from either traffic, either urban background sites is not defensible : as an example pollution level for traffic sites are different whether measured in large or small roads, in urban residential or urban working places... However, as it is impossible to make use of detailed information while looking at such a large set of cities, introducing variability relating to the identification of a monitor's location type seems to be a fair compromise. The weighting of NO₂ concentrations according to the type of monitors could be improved and adjusted for each city using Corine Land Cover database.

Secondly, and these are the main limits, there are great inequalities between cities regarding the quality of the surveillance of NO₂ (and other pollutants), as 50% host less than four monitor sites. Amongst the 56 largest cities in France, 19 do not survey traffic-related NO₂. Although theoretically most monitor types should be found in every city, in reality, most cities only survey pollutants in two kinds of location. The AASQA have clearly favoured the background location, used in most health studies, while traffic monitors are too scarce. Eventhough pollution surveillance is now compulsory, the AASQA are responsible, in each city, for atmospheric pollution surveillance. The AASQA benefit from ADEME's guidelines and expertise in implementing their stationary network (10), but each ASQA decides for itself where to install permanent measurement stations, which pollutant to observe, when to expand their measurement network, and when to start observation of an emission campaign. They are independent agencies, but placed under the supervision of a management board where civil society, politicians and manufacturing companies operating in the city are represented. Therefore, strong interests are in conflict in AASQAs and the geography of each city's stationary network may result more in a compromise between political forces than in a scientific objectivity. Therefore, stationary networks can vary in density, seniority, variety of pollutant surveyed and monitoring sites. Thus, there are monitors that do not accurately reflect the air pollution of the type of area that they are supposed to represent.

6 Conclusion

The purpose of this work was to propose an alternative method for building indicators allowing registration of different urban exposure situations, which may be used in epidemiological and risk assessment studies. Suggested improvements to the conventional use of mean concentrations, are based on the integration of spatial variability by weighting the measurements according to the share of different types of land use and to avoid smoothing the daily variations of NO₂. Depending on the types of monitoring sites used in the indicator and the way of dealing with the daily variations in the pollutant concentration, the relative position of the cities with respect to the global pollutant level varies.

These findings suggest that further investigations should be carried out on the relevance of certain indicators used in health studies.

Acknowledgements

This research has been supported by a contract from PIR Ville Environnement, an interdisciplinary research programme financed by CNRS (Centre National de la Recherche Scientifique) and the French ministry of Ecology and Sustainable Development (MEEDDM).

References

- (1) Huang, Y. L. and S. Batterman (2000). "Selection and Evaluation of Air Pollution Exposure Indicators Based on Geographic Areas." The Science of the Total Environment(253): 127-144.
- (2) APHEIS (2000-2001). Health Impact Assessment of Air Pollution in 26 European Cities. Air Pollution and Health: A European Information System, Institut de veille sanitaire. **Second year report**: 232
- (3) Wong, C. M. *et al.* (2002). "A Tale of Two Cities: Effects of Air Pollution on Hospital Admissions in Hong Kong and London Compared." Environmental Health Perspectives **110**(1): 67-77
- (4) Lefranc *et al.*, 2006, PSAS, Programme de surveillance air et santé, relation à court terme entre les niveaux de pollution atmosphérique et les admissions à l'hôpital dans huit villes française, Institut de Veille Sanitaire, 69 p.
- (5) Havard P. *et al.*, 2009, Traffic-Related Air Pollution and Socioeconomic Status, *Epidemiology*, vol. 20, number 2, March 2009
- (6) Aschan-Leygonie C., Baudet-Michel S., 2007, Qualité de l'air et concentrations de dioxyde d'azote, in *Données urbaines volume 5*, Pumain D. and Mattei M-F (eds), Paris : Anthropos-Economica, Collection Villes, pp. 335-348
- (7) Roorda-Knape M.C., Janssen N., De Hartog J., Van Vliet P., Harssema H., Brunekreef B., Air pollution from traffic in city districts near major motorways, *Atmos. Environ* 1998 ; 32 :1921-1930.
- (8) Katsouyanni K., Zmirou D., Spix C., Sunyer J., Schouten J.P., Pönka A., Anderson H.R., Le Moullec Y., Wojtyniak B., Vigotti M.A., Bacharova L., Short-term effects of air pollution on health : a European approach using epidemiological time-series data. *European Respiratory Journal* (8), pp. 1030-1038, 1995.
- (9) Boudet, C., D. Zmirou, *et al.* (2001). "Can One Use Ambient Air Concentration Data to Estimate Personal and Population Exposures to Particles? An Approach within the European EXPOLIS Study." The Science of the Total Environment(267): 141-150.
- (10) ADEME (2002). Classification et critères d'implantation des stations de surveillance de la qualité de l'air. Paris, Agence de l'Environnement et de la Maîtrise de l'Energie: 63