



**HAL**  
open science

## Territorial Intelligence and Innovation for the Socio-Ecological Transition

Jean-Jacques Girardot, Evelyne Brunau

► **To cite this version:**

Jean-Jacques Girardot, Evelyne Brunau. Territorial Intelligence and Innovation for the Socio-Ecological Transition. 9th International conference of territorial intelligence, ENTI, Nov 2010, Strasbourg, France. halshs-00773128

**HAL Id: halshs-00773128**

**<https://shs.hal.science/halshs-00773128v1>**

Submitted on 11 Jan 2013

**HAL** is a multi-disciplinary open access archive for the deposit and dissemination of scientific research documents, whether they are published or not. The documents may come from teaching and research institutions in France or abroad, or from public or private research centers.

L'archive ouverte pluridisciplinaire **HAL**, est destinée au dépôt et à la diffusion de documents scientifiques de niveau recherche, publiés ou non, émanant des établissements d'enseignement et de recherche français ou étrangers, des laboratoires publics ou privés.

# Territorial Intelligence and Innovation for the Socio-Ecological Transition

Jean-Jacques GIRARDOT

Scientific co-ordinator of the European Network of Territorial Intelligence  
Université de Franche-Comté, BESANÇON, France

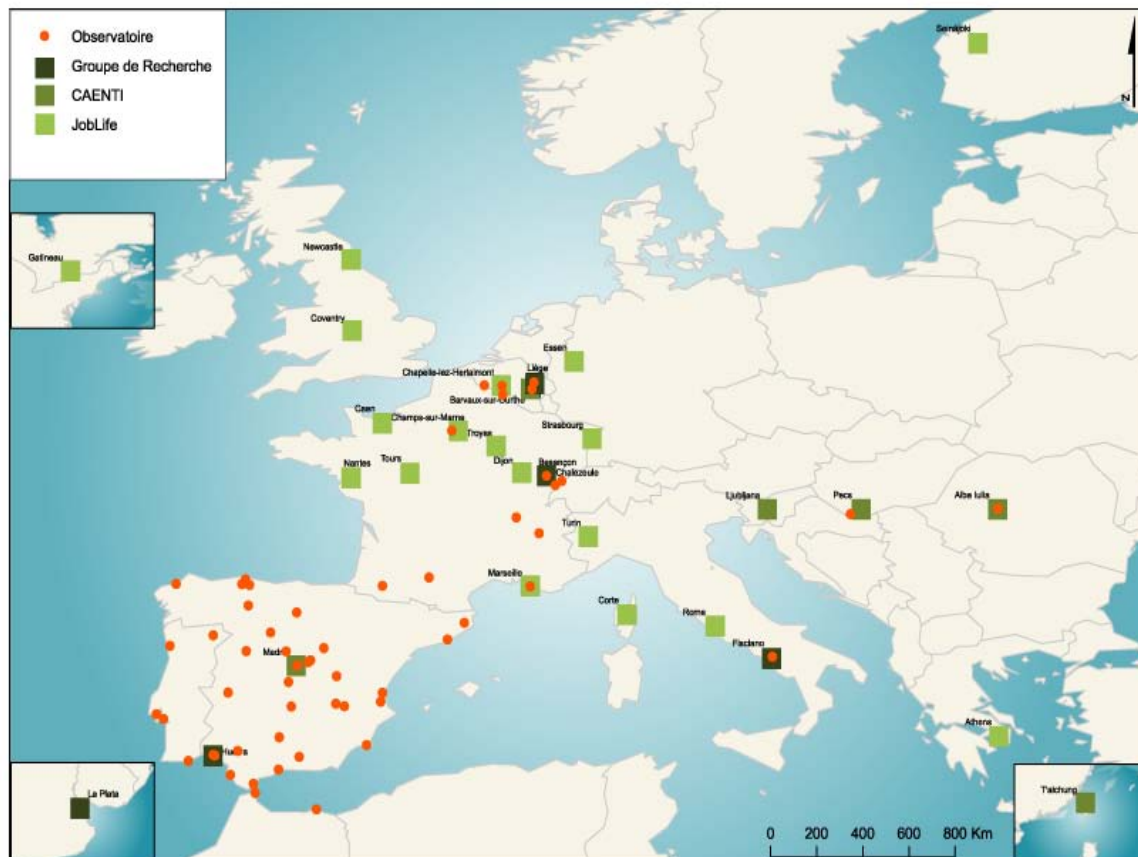
Évelyne BRUNAU  
Directrice Relais Emploi Strasbourg

## Objective

This paper presents the main innovative aspects of the *Catalyse* method and of the concept of territorial intelligence, which are mobilized for the project *new-Life* "Cooperate and observe to achieve the socio-ecological transition in Europe".

## European Network of Territorial Intelligence

ENTI gathers research teams and territorial actors at designing, arguing, managing and assessing actions of sustainable development which improve the welfare of citizens and of territorial communities.



Catalyse, cooperative observation method

ENTI was initiated from 1990 through the dissemination of territorial observatories "*Catalyse*" in Europe in multi-sector partnerships cooperating at the inclusion of social declassified groups and at the sustainable development of vulnerable territories.

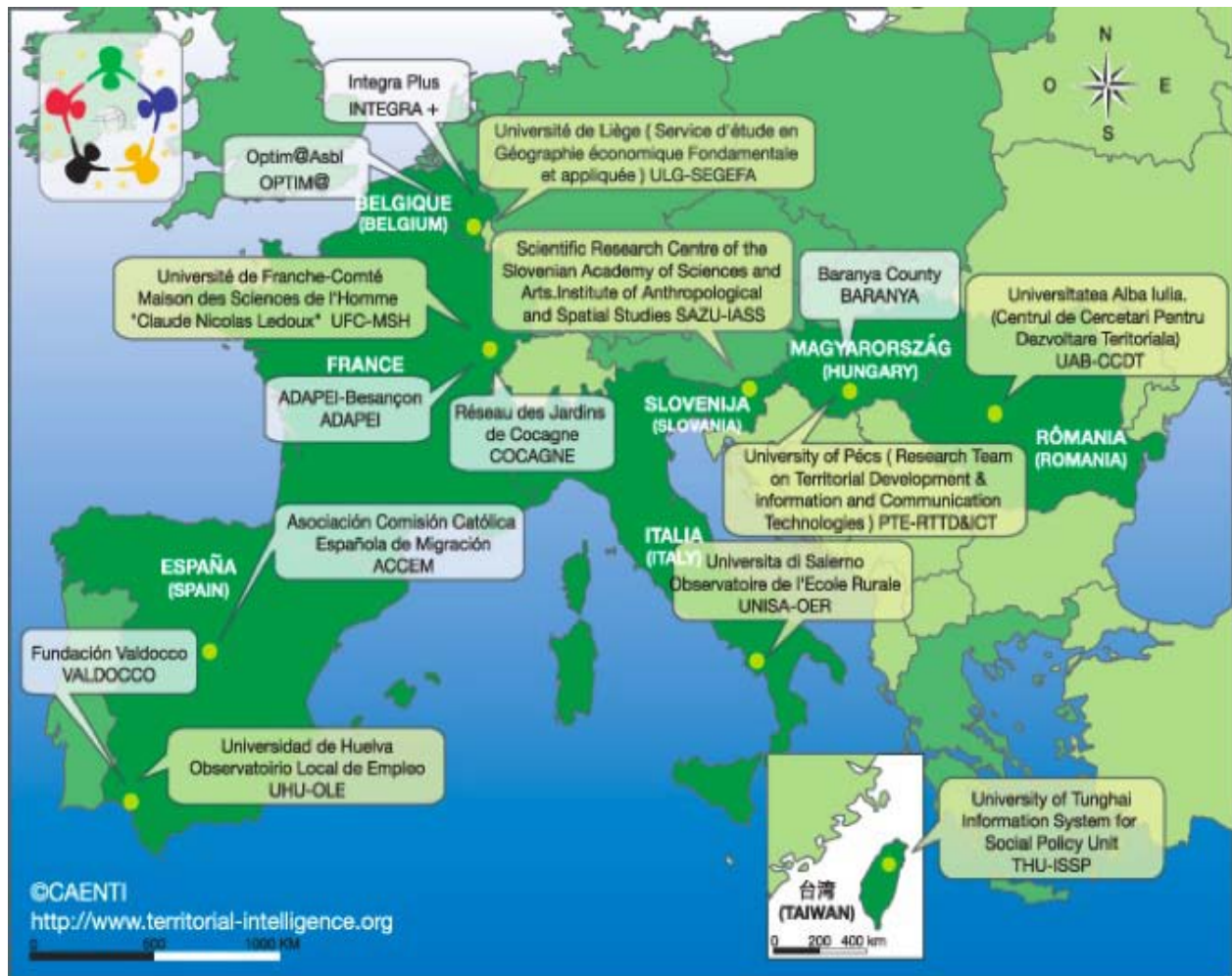
### Territorial Intelligence concept

Territorial intelligence formalized the use of information technology and communication to catalyze the co-construction of multidisciplinary knowledge and knowledge across sectors and strengthen the effectiveness of concerted action for sustainable development.

### caENTI

caENTI integrated a network of research teams and local players to harmonize at the European level the territorial intelligence tools, to study the basic methods and tools for generic analysis of the territories and analyze the principles of participatory governance of action research.

Coordination action FP6 caENTI



### ENTI

ENTI offers an ambition of international scientific exchanges and practices on local action for sustainable development, territorial observation and local governance for the combination of economic, social, environmental and cultural information on innovative local initiatives.



The territorial observation is the tool to share information in a multidisciplinary, multisector and multiscalar. It should provide stakeholders and citizens with an equal and transparent access to information and knowledge, with monitoring tools to develop, manage and evaluate sustainable development actions.

### **Territorial intelligence innovations**

- Multidisciplinary knowledge
- Dynamic vision of territories
- Involve communities and practitioners
- Share, co-construct, cooperate
- Participatory territorial governance

#### ***Multidisciplinary knowledge***

Territorial intelligence was suggested in order to advance the multidisciplinary knowledge that “enables to improve the understanding of the links between the socio-ecological transition and growth as well as the role of innovation.

#### ***Dynamic vision of territories***

*Territorial intelligence* suggested dynamic vision of the territory, combining the potential of a geographic space and the capabilities of a community.

#### ***Involve communities and practitioners***

As collective vision of the dynamics of the territories, *territorial intelligence* involved communities, stakeholders, and practitioners in the research, with a view to enhancing innovative development projects and better instruments for coordinated governance to allow territorial actors to elaborate, manage and evaluate projects of sustainable development.

#### ***Share, co-construct, cooperate***

Sharing information between scientific disciplines, sectors and territorial scales is provided to co-construct knowledge and collaborative projects combining economic, social, environmental and cultural objectives of sustainable development.

#### ***Participatory territorial governance***

Participatory governance allowing citizens and stakeholders to participate in decision making is also a requirement to draw up and implement together actions appropriate to local capacity and constraints, and to improve the welfare of all by reducing social, environmental and cultural local costs globalization.

### **Culture and education**

The evolution of culture and education is still a favorable condition for accession and cooperation of citizens and territories in the socio-ecological transition

#### ***new-LiFE research project***

The project “Cooperate and observe for a successful socio-ecological transition in Europe” suggested by ENTIL, the European Network of territorial Intelligence, meets about topic "Europe moving towards a new path of economic growth and social development" of the 7<sup>th</sup> research programme of the European Union.

#### ***New-LiFE Hypothesis***

*new LiFE* hypothesizes that a new development model based, not on a financial criterion and selfish behaviour, but on improving the welfare of each while ensuring a minimum of well being for all, is able to ensure the successful transition socio-ecological in Europe and worldwide, if it is based on cooperation and the territorial observation, if this model is driven by a plural design of innovation, if it is based on co-

constructed knowledge across the territories and if it is animated by a truly participatory territorial governance.

### **Innovative research dimensions**

- Well-being
- Socio-ecological transition
- Combination of development objectives

#### ***Well-being***

The policies of the European Union, which are oriented from a decade “into a sustainable knowledge-based economy” ... “need to be reassessed and adapted to the new requirements of a transition to a socio-ecological model of development. The new "Europe 2020" agenda made to foster these new development and social well-being trajectories needs an accompanying research agenda.”

#### ***Socio-ecological transition***

“In order to succeed the socio-ecological transition” in a context of crisis characterized by many global challenges, the EU must adapt its policy framework and common rules "to strive for accelerated transformation of the financial, economic and environmental structures and policies as well as modernisation of social welfare and development of high quality standards of the environment."

#### ***Combining development objectives***

new-LiFE also refer to activity "paths towards sustainable development", characterized at “combining economic, social and environmental objectives” and cultural ones, in Europe and worldwide.