



HAL
open science

Accounting for Labor Gaps

François Langot, Alessandra Pizzo

► **To cite this version:**

| François Langot, Alessandra Pizzo. Accounting for Labor Gaps. 2015. halshs-01164076

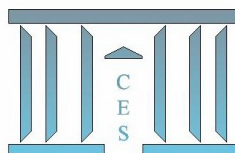
HAL Id: halshs-01164076

<https://shs.hal.science/halshs-01164076v1>

Submitted on 16 Jun 2015

HAL is a multi-disciplinary open access archive for the deposit and dissemination of scientific research documents, whether they are published or not. The documents may come from teaching and research institutions in France or abroad, or from public or private research centers.

L'archive ouverte pluridisciplinaire **HAL**, est destinée au dépôt et à la diffusion de documents scientifiques de niveau recherche, publiés ou non, émanant des établissements d'enseignement et de recherche français ou étrangers, des laboratoires publics ou privés.



Accounting for Labor Gaps

François LANGOT, Alessandra PIZZO

2015.36



Accounting for Labor Gaps

FRANCOIS LANGOT *†

Université du Mans (GAINS-TEPP-IRA), Paris School of Economics, Banque de France & IZA

ALESSANDRA PIZZO

Université de Paris 1 (CES) & Banque de France ‡

April 2015

Abstract

We develop a balanced growth model with labor supply and search and matching frictions in the labor market to study the impact of economic policy variables on the two margins which constitute the (total) labor input: the extensive one (the rate of employment) and the intensive one (the hours worked per worker). We show that the dynamics of the taxes have an impact mainly on the hours worked while labor market institutions have a large influence on the rate of employment. However, our findings underline that there is an interaction between the two margins. The model is tested on four countries (US, France, Germany and UK) which experiment different tax and labor market dynamics since the sixties. Using this structural approach, we can then perform counterfactual experiments about the evolution of the policy variables and to compare welfare levels implied by policy changes.

JEL Classification : E20, E60, J22, J60

Keywords: Taxes, labor market institutions, hours, employment, labor market search

*Corresponding author. Email: flangot@univ-lemans.fr

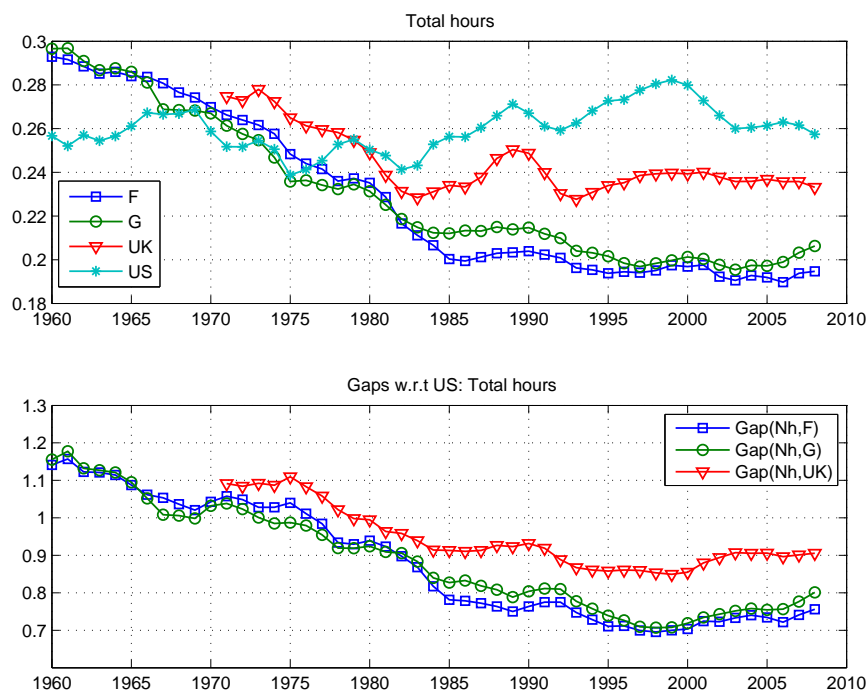
†Financial support from the Banque de France is gratefully acknowledged. Omissions and mistakes are ours. We thank Florin Bilbiie, Jean-Olivier Hairault and Alexandre Janiak for helpful comments. We also thank seminar participants at Banque de France, PSE, Bank of Chile, University of Chile and T2M (Berlin) seminars.

‡Email: ale.pizzo@gmail.com

1 Introduction

The evolution of hours worked during the post WWII period has been characterized by sharp differences across developed economies: if we look at the evolution of this aggregate in the US and three selected countries among the European ones⁽¹⁾ (France, Germany⁽²⁾ and UK), we observe a sharp decline of hours in the two continental European countries, at least till the mid eighties, while in the UK the decline has been less important and in the US total hours have slightly increased (see Figure 1, top panel). Moreover, the gaps between the US and the European countries have continuously increased since the mid seventies: whereas in the 1960s, a European employee works 15% more than an American worker, his descendant works 30%, 20%, or 10% less than his American counterpart, if he lives, respectively, in France, in Germany or in UK (see Figure 1, bottom panel).

Figure 1: Total hours 1960-2010



The heterogeneity in the evolution of aggregate worked hours has already been highlighted in the literature⁽³⁾. The main finding of these contributions is the following: "I

⁽¹⁾These countries are also among those retained by Prescott (2004) [25] in his seminal paper on the labor wedge and taxes.

⁽²⁾Data for Germany refer to the actual country as it exists from 1990; the series for the years which precede the reunification are reconstructed using data from the West and the East Germany.

⁽³⁾See for example Prescott (2004) [25], Ohanian et al. (2008) [21] or McDaniel (2011) [17].

determine the importance of tax rates in accounting for these differences in labor supply for the major advanced industrial countries and find that tax rates alone account for most of these differences in labor supply", Prescott (2004) [25]. According to this view, the welfare impact of a tax reform in France could therefore be considerable. Prescott (2004) [25] for example obtains that if France adopted American tax rates on labor income (i.e., reducing the effective tax rate on labor by 20 percentage points) "the welfare of the French people would increase by 19 percent in terms of lifetime consumption equivalents". Such large welfare gains would undoubtedly call for cutting French (and more broadly, European) taxes down to US levels. At general equilibrium, the corollary of such policy will naturally be to reduce the Government expenditures and transfers, as it is done in Prescott (2004) [25] ⁽⁴⁾.

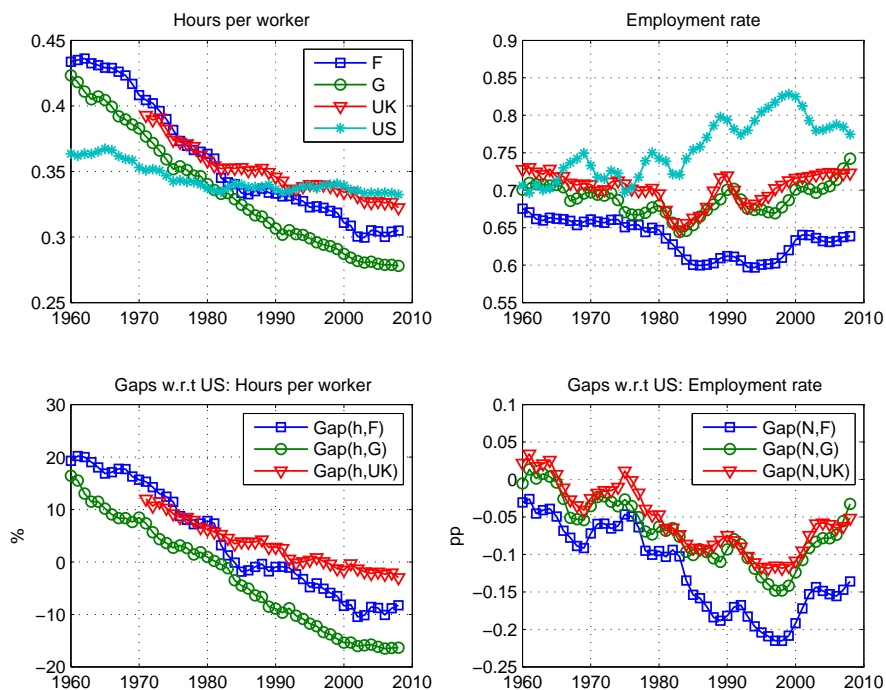
The simple neoclassical growth model with endogenous labor supply can be considered as a parsimonious approach to evaluate quantitatively the impact of a tax reform on the level of aggregate hours worked at the general equilibrium: in this case the labor wedge is reduced to the tax wedge. However, this approach does not allow to distinguish between hours worked per employee and the number of employees, whereas these two margins experienced different evolutions (see Figure 2): while the American "jobs miracle", characterized by an increase of the chance to be employed and a small decline of the hours worked per employee, seems to be a peculiar feature of only the US till the end of the 2000s, Germany and the UK show comparable evolutions between each other. In particular, from the mid nineties with the Kohl reforms, the employment rate continuously increases in Germany. This feature is magnified since the beginning of the implementation of the Hartz reforms⁽⁵⁾. In UK, the reforms implemented by the Thatcher governments seem to have a significant impact on the "chance" to be employed: the employment rate has been rising since the middle of the 80s, with a current level equal to the one observed in 1960. Since the beginning of the eighties, the number of hours worked per employee is also stable and equal to the one of an American worker. At the opposite, France shows particularly bad performances. France shares with Germany the large decline of the hours worked per employee (the gap between a French and an American worker is equal to -10% at the end of the sample). But, in France, the chance to be employed falls from 65% to 60% (leading to a gap in chance to be employed equal 20 point of percentage with respect to the American worker) after the Mitterrand reforms. This larger "French gap" with respect to the US will never be compensated until the end of the sample. Finally, let remark that these long run shifts are much more larger than the

⁽⁴⁾From a methodological point of view, Prescott's evaluation of the welfare gains coming from the tax cuts takes into account the contraction in Government expenditure and the transition necessary to reach a new steady state with a smaller welfare State.

⁽⁵⁾These new laws on the labor market make easier the part-times, and also reduce the labor costs. Thus, the hours per worker do not increase, whereas the employment rate is, at the end of sample larger than the one observed in the US, for the first time since the end of the WWII.

employment losses linked to the recent recession, and observed during periods (from the 60s to 90s) where governments have followed expansionary keynesian policy recommendations. These facts suggest that the long run trend of the European economies are been driven by a negative supply shift.

Figure 2: The decomposition of the total hours 1960-2010



The objective of our contribution is to develop a dynamic general equilibrium model with search and matching frictions in order to decompose the labor wedges in two components: the "hours worked per employee wedge" and the "employment wedge". From a theoretical point of view, the originality of our paper is to propose a theory for the allocation of time allowing to identify the relative contribution of taxes and labor market institutions' changes by decomposing the aggregate hours of work into the intensive and the extensive margins. We then propose to analyze the decentralized allocation of a general equilibrium model with matching frictions, wage bargaining and efficient bargain on the number of hours worked per employee.⁽⁶⁾

With this type of theory of hours and employment allocation, we can distinguish between the contribution of taxes and the contribution of changes in labor market institutions (such

⁽⁶⁾The model is closed to the first contributions of Langot (1995) [12], Merz (1995) [18] and Andolfatto (1996) [1].

as unemployment benefit system and the type of the wage bargaining arrangements) on the labor wedge⁽⁷⁾.

Whereas taxes are the first and the only candidate for Prescott (2004) [25] to explain the European aggregate hours gap with respect to the US, another important strand of literature focuses on the low employment rate in Europe. These studies encompass the ones that focus on unemployment⁽⁸⁾ and those that analyze the non-participation⁽⁹⁾. The main result of these studies is that incomes perceived during inactivity generate a large distortion on the employment rate: unemployment benefits, pensions or subsidized education induce an implicit tax on the labor supply. Hence, beyond the unemployment gap, the European countries are characterized by an employment gap. This leads us to focus on the employment rate, rather than on the restrictive measure of the unemployment rate⁽¹⁰⁾, and on the impact of the distortions implied by the shifts of the labor market institutions.

Our contribution therefore consists in distinguishing the elasticities of the hours worked per worker and of the employment rates to long run changes in taxation and labor market institutions: as it is suggested by Ljungqvist, Sargent (2007) [15], the standard neoclassical growth model used by Prescott (2004) [25] cannot account for the observed impact of both taxes and labor market institutions. Our approach allows also to overcome the doubts expressed by Nickell (1997) [20] about the puzzling fact that while in Europe labor market institutions remained almost unchanged between the sixties and the nineties, the performance of countries in terms of unemployment were often reversed at the end of this period with respect to the beginning of this sample⁽¹¹⁾: first of all we show that labor market institutions did indeed change, secondly we emphasize the relative elasticities of both hours and employment to these changes, highlighting that it is indeed possible to reconcile the long run evolution of the employment rate with those of the labor market institutions.

From a methodological point of view, we depart from Prescott (2004) [25] and Ohanian

⁽⁷⁾Ohanian et al. (2008) [21] show that the labor wedge computed with a model that merge hours worked per employee and the employment rate, is not independent from the labor market institutions, such as the unemployment benefit system or the type of the wage bargaining arrangements. Nevertheless, these authors shows that these shifts in the labor market institutions haven't a large explanatory power in the dynamics of the labor wedge. But, there is a break in the data: since the end of the seventies, the differences across countries in aggregate hours are mainly due to quantitatively important differences along the extensive margin. Moreover, it is interesting to distinguish the elasticities of the two margins (extensive and intensive) in order to account for the relative importance of taxes and labor market institution on the dynamics of the aggregate hours.

⁽⁸⁾see e.g. Mortensen, Pissarides (1999) [19], Blanchard, Wolfers (2000) [3] or Ljungqvist, Sargent (2007) [15].

⁽⁹⁾see e.g. Gruber, Wise (2005) [9] and Hairault, Langot and Sopraseuth (2010).

⁽¹⁰⁾In this respect, we agree with the view presented in Rogerson (2006) [27]: the unemployment rate alone can not be interesting for the explanation of the gap between Europe and US. Given the institutional arrangements, only the employment rate can account for this gap.

⁽¹¹⁾We thank Alexandre Janiak for pointing this out to our attention.

et al. (2008) [21]: they only compute wedges in the static first-order condition governing labor supply in a calibrated version of the growth model ⁽¹²⁾. In our paper, we instead follow McDaniel (2011) [17]: rather than simply focusing on the static first-order conditions, we solve for the time series of choice variables given country-specific tax rates, labor market institutions and productivity series, under perfect foresight⁽¹³⁾; the main interest of this approach is to test the theory given the restrictions it implies on the agent expectations. This point is particularly important in a long run perspective where the objective is to explain the structural shifts on labor market allocation linked to permanent drifts in taxation and institutions. From an "econometric" point of view, this type of test is more demanding with respect to the theory because the complete resolution of the model leads to cumulate the forecast errors of the static first-order conditions. With this method, we then encompass the measures based on the static wedges and the others, as the one proposed by Pissarides (2007) [23], where the steady state equilibrium variables depend on rate of growth of the exogenous variables. With this general equilibrium approach, we take into account the dynamics of the Solow residual and of the taxes on capital: these two components can not be ignored in a analysis of the long run evolutions of the input factors.

Finally, we also depart from Prescott (2004) [25] with respect to the modelling choice of the Government expenditures. Indeed, Prescott's evaluation is done under the simplifying (caricatural) assumption that all government expenditures can be substituted by private consumption: hence, in Prescott's view, the Government size is "excessive" by definition, because its optimal size is zero. This view is contestable: one can distinguish between "individual" goods public expenditures (education, health, etc.) and those intrinsically "collective" (army, justice, collective equipments). Unlike the first category, the optimal size of the collective public spending can not be zero because they are not "perfect" substitute to private consumption, as they cannot be made by the household herself ⁽¹⁴⁾. Hence, in our evaluation of a tax cut reform, we will only reduce the individual government spending which induces a misallocation of consumption. In the model, we then distinguish these two type of government spending by imposing that the optimal "size" of the collective good is strictly positive.

What do we learn from our methodology? Firstly, from a theoretical point of view, we show that:

⁽¹²⁾Prescott (2004) computes this static wedge in two points (the early seventies and the mid-nineties), whereas Ohanian et al. (2008) compute this wedge at an annual frequency, on a more larger set of OECD countries.

⁽¹³⁾From this last important point, we depart from Langot, Quintero-Rojas (2008) [14] who propose a search and matching model, but only account for the static wedges.

⁽¹⁴⁾This view finds some empirical support in Ragan (2013) [26] and Rogerson (2007) [28]. They show that it is necessary to introduce these "collective" public spending in the utility function of the agent to account for labor market outcomes heterogeneity among OECD countries.

- (i) there is a non-trivial interaction between the two labor margins leading to a substitution between hours per worker and employment,
- (ii) taxes and labor market institutions do not have the same impact on these substitutions.

For a given choice of hours worked, a higher tax rate on labor incomes increases the gross reservation wage and thus reduces the labor demand. The two responses of the two employment margins interact: (i) the contraction of the intensive margin (h), by reducing the reservation wage, can lead to increase the extensive margin (N), (ii) whereas the reduction of the extensive margin (N), by reducing the agents wealth, can lead to increase the intensive margin (h). We show that for realistic calibration of the model parameters, only the number of hours worked is affected by changes in the labor taxes. The story is not the same for the labor market institutions. Indeed a change in the labor market institution has a direct impact only on the extensive margin: lowering wage pressures (by reducing the bargaining power of the workers or their unemployment benefits) rises the hirings. For all the households, this is perceived as a positive wealth effect, leading them to reduce their hours worked by employee. Hence, the magnitude of such change in institutions can be large for the two labor margins⁽¹⁵⁾.

Secondly, from a quantitative point of view, several points must be stressed:

- (i) the choice of these countries allows us to control for some experiments: the US workers are the "non-treated" group because the tax wedge and the labor market institutions are stable over all the period, whereas the French workers form the group experimenting different treatments. In France, the taxes increase over the period and the labor market institutions shift in favor of the worker at the beginning of the first socialist government (the beginning of the 80s). We also use German and UK data in order to check that opposite reforms in Europe produce different model predictions. In particular, in Germany, the taxes increase over the period and the labor market institutions shift in favor of the firms during the 90s with the Kohl government, and with the Hartz reforms (after 2003). In UK, the taxes are low, and the labor market reforms implemented by the Thatcher government at the beginning of the 80s shift in favor of the firms.
- (ii) Given our calibration strategy, which only restricts the averages of the simulated series of hours per worker and employment to match their empirical counterparts, we show that the model allows to predict the slope of the continuous decline in hours per worker in all European countries, and the big changes in the employment rates, with

⁽¹⁵⁾Our analysis then extends the one by Fang, Rogerson (2009) [7] who study from a qualitative point of view the implications a model of labor supply and the search and matching frictions (without capital accumulation) on the interactions between the two margins of labor input at the steady state.

contrasting experience between France, Germany and UK, given that these countries did not implement the same reforms at the same time.

(iii) Finally, we can compute the welfare gains associated to a change in the policy, conditionally to year of entry in the labor market. For a French worker, given that the distortions induced by taxes and labor market institutions increase during all the period, the gains to adopt the US tax-benefits system raise from almost 8% of consumption in 1960, to 18% in 2010.

The paper is organized as follows. Section 2 documents the data used. In Section 3, the search and matching model is exposed. Section 4 brings the model to the data, after calibrating the key parameters of the model. In Section 5 we perform the counterfactual experiments. Section 6 concludes.

2 The basic facts

In this section, we describe the data we use. Considering the differences among the evolutions of the two margins composing total labor input, we decide to focus on four countries: USA, France, Germany and UK. We consider the UK as an "intermediate" case lying in between the US and the continental cases. For what it regards Germany, we have to remember that most of the data have been reconstructed to account for the reunified country after 1989, however the variables which measure labor market arrangements typically cannot be comparable between the two economies of the West and East Germany: we therefore decide to perform a "check" of the explanatory power of our model by looking at its predictions for Germany only for the last 20 years (i.e. starting from 1990). We can therefore show why the choice of these countries is interesting in the perspective of a test of the theory: since the time series of the exogenous variables (taxes, labor market institutions and technological progress) have not the same dynamics, we expect that it will be the case for the endogenous variables which are the hours per worker and the employment rate.

2.1 Hours per worker and employment rates

We present in this part the basic facts we want to account for with our model⁽¹⁶⁾. Figures 1 and 2 give a complete description of the dynamics of hours worked and employment in the selected countries. Table 1 summarizes these data⁽¹⁷⁾.

⁽¹⁶⁾We use the dataset constructed by Ohanian et al. (2012) [22]. We are really thankful to A. Raffo for having shared with us the last version of their dataset. A version of it can be found at the address <http://www.sciencedirect.com/science/article/pii/S0304393211001139>.

⁽¹⁷⁾We choose 2008 as terminal point of the sample in order to purge our basic static from the last recession.

Table 1: Ratios

Ratios in 2008 relative to 1960	US	FR	UK	GE
$\frac{Nh}{Pop*365*14}$	1.00	0.66	0.85	0.7
$\frac{N}{Pop}$	1.10	0.95	1.03	1.06
$\frac{h}{365*14}$	0.91	0.70	0.82	0.66

For UK we report the ratios in 2008 relative to 1971

Total hours worked show a very different evolution along the last fifty years in the selected countries: while they have remained flat in the US, we observe an important decline in the European continental countries (France and Germany), with the UK staying in between the experience of the US and its continental neighbors. This evolution is in fact originated, as we have seen, by the path of the two margins which compose the total labor input: the intensive and the extensive one. In the US the employment rate showed an increasing trend between the mid eighties and the end of the nineties, while in France the employment rate decreased between the eighties and the mid of the nineties. The German performance is remarkably better than the French one, with a continuously increasing employment rate starting from mid nineties. The UK recently closed the "employment gap" with respect to the US which started to be observed in the mid seventies, as we can see in Figure 2. If we look at the intensive margin, we observe a sharp decline in France and Germany, while in the US hours per worker declined only slightly. The UK seems to share the evolution of its continental neighbor, but only till the mid eighties, when the decline slowed down.

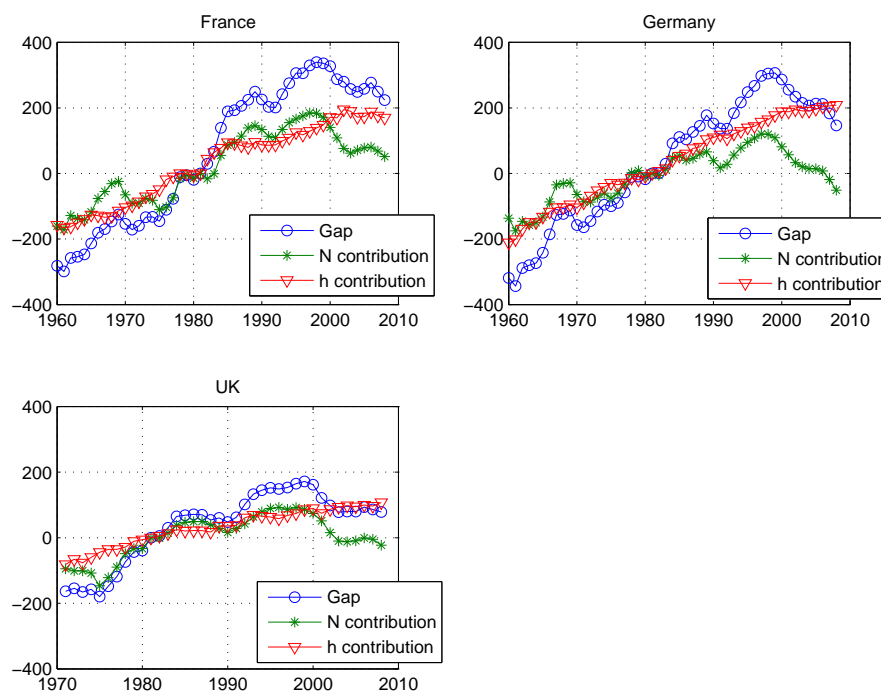
We can measure the total-hours-worked gap with the US, and the contribution of employment rates and hours per worker to this gap. We then replicate the counterfactual exercise proposed by Rogerson (2006) [27] to asses the explanative role of both the hours worked per employee and the employment rate in the dynamic of the total employment. The procedure used by is as follows:

1. Consider a reference year t_0 , say 1981.
2. Consider a different year t . For each country $i = \{\text{France, Germany, UK, US}\}$, compute the change in the employment rate between t_0 and t : $\Delta_{i,t}^N = N_{i,t} - N_{i,t_0}$.
3. Compute the change for country $i \neq \text{US}$ minus the change for the US: $r\Delta_{i,t}^N = \Delta_{i,t}^N - \Delta_{US,t}^N$. $r\Delta_{i,t}^N$ denotes the differential in country $i \neq \text{US}$'s employment rate relative to the US (and to the reference year t_0).
4. Consider the hypothetical case in which the change in country $i \neq \text{US}$'s relative employment did not happen: the chance to be employed evolves as in the US. Instead, assume that the $r\Delta_{i \neq \text{US},t}^N$ (%) individuals were employed in t and worked the same

number of hours as a individual in country $i \neq \text{US}$, that is $h_{i,t}$. This would rise total hours in country $i \neq \text{US}$ by an amount equal to $\Delta_{i,t}^{Nh,N} = -r\Delta_{i,t}^N \times h_{i,t}$. The series $\Delta_{i,t}^{Nh,N}$ are the number of additional hours worked that economy i would have at date t if its employment rate were the same as in the US.

5. The comparison of $\Delta_{i,t}^{Nh,N}$ with the observed differential in relative total hours give us a measure of the employment rate contribution. The observed differential is computed as $\Delta_{i,t}^{obs} = N_{i,t}h_{i,t} - N_{US,t}h_{US,t}$. If the contribution of employment to the total hours gap is important, we expect a series of hypothetical hours ($\Delta_{i,t}^{Nh,N}$) close to the actual ones ($\Delta_{i,t}^{obs}$).

Figure 3: A decomposition total hours gaps



In each panel of Figure 3, for each country, the "gap" is $\Delta_{i,t}^{obs}$. The time series "N contribution" and "h contribution" are computed respectively using $\Delta_{i,t}^{Nh,N}$ and $\Delta_{i,t}^{Nh,h}$. The reference year (t_0) is 1981. Total hours Nh are multiplied by 365×14 : the gaps are then the differences between the US and European countries for one year.

We also assess how much of the gap between each country and the US in the total hours worked is due to the intensive margin. To this end, we compare the contribution of the

additional hours that European countries would have if all employed workers were working as much as American workers ($\Delta_{i,t}^{Nh,h}$). Given that $\Delta_{i,t}^{Nh,N}$ measure the additional hours that European countries would have if the employment rates were the same as in the US, we have $\Delta_{i,t}^{Nh,N} + \Delta_{i,t}^{Nh,h} = \Delta_{i,t}^{obs}$, where $\Delta_{i,t}^{Nh,N}$ and $\Delta_{i,t}^{Nh,h}$ are the relative contribution of extensive and intensive margins in the observed gap ($\Delta_{i,t}^{obs}$).

We report in the figure 3 the results for France, Germany and UK, where the reference year is $t_0 = 1981$. As expected, the size of the gap is smaller in UK than in France and Germany. Since the beginning of the 80s, the three European countries exhibit particular experiences. In Germany, the contribution of the employment rate is very small, showing that this country gives the same chance than the US to be employed. This dynamic of the weight of the employment rate in the hours gap is shared by the UK. Thus, for these two countries, the gap with the US comes from a smaller number of hours worked per employee: the losses, respectively in Germany and UK, are 200 hours and 100 hours. In France, the experience is different: from 1985 to 2000, the largest contribution of the hours gap is explained by the lack of chance to be employed provided by the French economy. During this period, the losses due to this "under-employment" are equal to 150 hours per year and per participant. At the same time, we also observe in France, a large weight of the hours per worker contribution in the hours gap (approximately 150 hours per worker in average since 1980). Thus, the gaps in France are large and of similar magnitude.

2.2 Taxes, labor market institutions and technological progress

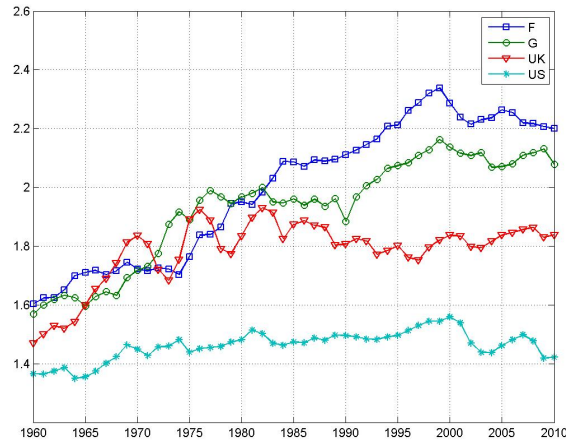
In this model we have three sets of exogenous variables: the set of tax rates (on labor income, on consumption, on capital revenues and on investment), a set of variables summing up the labor market institutions (the replacement rate and an indicator of the level of unionization, representing the bargaining power of the worker), and finally the Solow residual of the production function, representing the technological progress in labor productivity.

2.2.1 Taxes on labor

For what it concerns the data sources, the tax rates are taken from McDaniel (2007) [16]⁽¹⁸⁾. We report in Figure 4 the evolution of this first exogenous variable. We observe that the tax wedge is stable over all the period in US. In 1960, it is necessary to produce 1.4\$ in order to consume 1\$. In 2010, the situation is unchanged. At the opposite, in France, these tax wedges increase rapidly between 1960 and 1985, and continue to grow after but at a lower rate. Whereas in 1960, it was necessary to produce 1.6\$ in order to consume 1\$, in 2010, it would be necessary to produce for a amount of 2.2\$ in order to obtain 1\$ of consumption.

⁽¹⁸⁾latest update: 2012; <http://www.caramcdaniel.com/researchpapers>.

Figure 4: Tax wedge $\frac{1+\tau_c}{1-\tau_w}$



In the UK, the evolution of the tax wedge is comparable to what happened in France till the mid 1970s, while after that date it stopped to grow and its level today stays in between those of US and France. In Germany the tax wedge increased through the seventies while a lower grow of the tax rate is observed in the sub-sample 1980-2010.

2.2.2 Taxes on capital

Considering that our model is a general equilibrium one, it is important not omit the taxes on capital. These taxes modify the relative demand between capital and employment. There are two type of taxes: on the revenues of the existing capital, and on the investment goods. The tax rates on capital revenues and on investment are taken from McDaniel (2007) [16]⁽¹⁹⁾. We report in Figures 5 the evolution of this set of exogenous variables. As it is shown in Figure 2, the policy choices are not the same in the two side of the Atlantic. In the US and UK, the taxes are based largely on the capital incomes, whereas in France and Germany taxes are heavier on investment. Remark that the gaps on the capital income taxes decline over all the sample, whereas the gaps in the investment taxes are persistent.

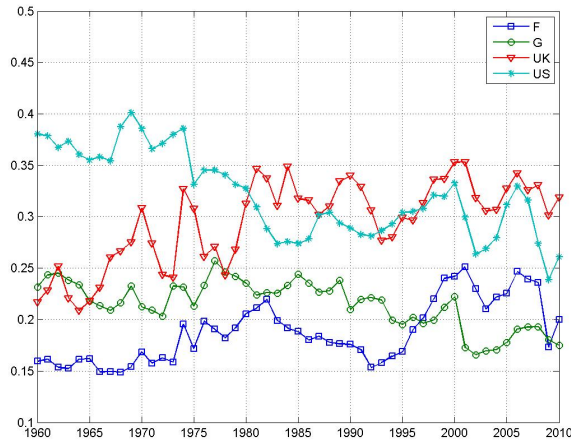
2.2.3 Labor market institutions

The data of the bargaining power are taken from the Database on Institutional Characteristics of Trade Unions, Wage Settings, State Intervention and Social Pact (ICTWSS)⁽²⁰⁾. The bargaining power of the worker is considered as an average of two indicators, the union

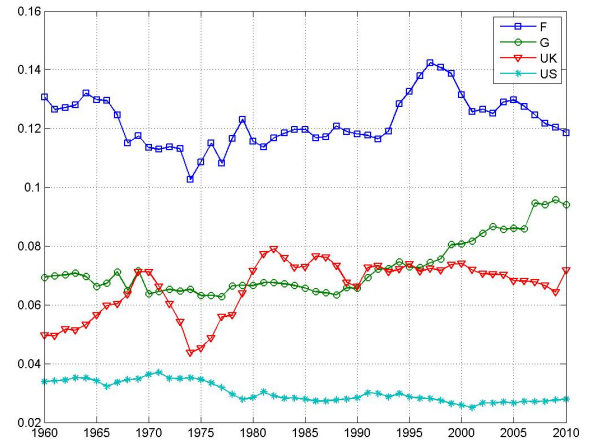
⁽¹⁹⁾latest update: 2012; <http://www.caramcdaniel.com/researchpapers>.

⁽²⁰⁾The database is compiled by the Amsterdam Institute for Advanced Labour Studies (AIAS).

Figure 5: Taxes on capital and investment 1960-2010



Tax rate on capital revenues



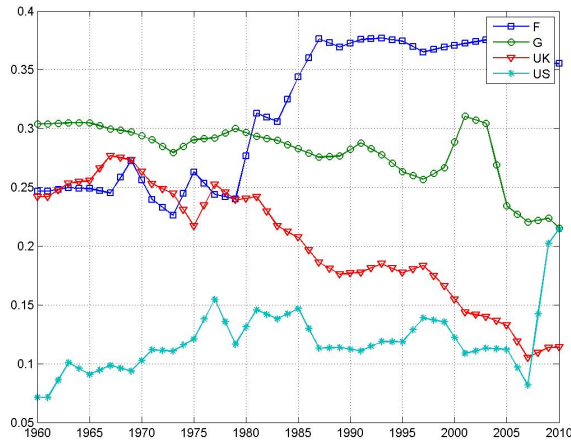
Tax rate on investment

density and the union coverage. The replacement rate is taken from the OECD. Since it is available only for uneven years, we linearly interpolated the missing values.

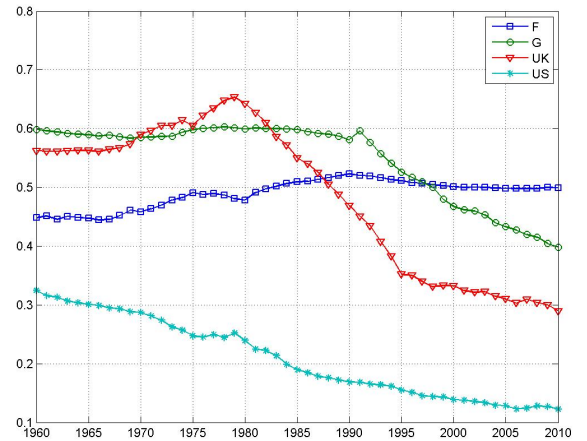
Two statistical indicators are available to give an indirect measure of the bargaining power of the employee during the wage bargaining process: the union coverage and the union density. These two indicators are closely linked to the bargaining power: a large union coverage or a high union density give to the worker the possibility to make counter-offer during the bargaining process. We choose to evaluate the worker bargaining power by the average of the union coverage and the union density. Indeed, even if we observe a decline in the union density, the institutional agreements can conserve an "historical" coverage (the memory effect). We remember that for what it regards Germany, the data before the reunification correspond only to West Germany.

We report in Figures 6 the evolution of these exogenous variables. A rapid look to these data suggests that the weight of the labor market institutions is very different in our selected countries: the unemployment benefits are more than two times lower in 2008 in the two English-speaking countries than in France; the path of the unemployment benefit level in UK is impressive: while at the beginning of the sample the replacement rate was more similar to the French one, starting from the eighties we observe a very strong policy intervention towards a decrease of it. In France we observe a large rise of the generosity at the beginning of the first socialist government (the beginning of the 80s). It is also important to notice that this rise of the generosity of the unemployment benefits is also accompanied by an increase of the eligibility: older workers (55 years old and more) can perceive benefits until their retirement age, without any constraint to search for a job, and since 1988, non-

Figure 6: Labor market institutions 1960-2010



Replacement rate



Bargaining power of the workers

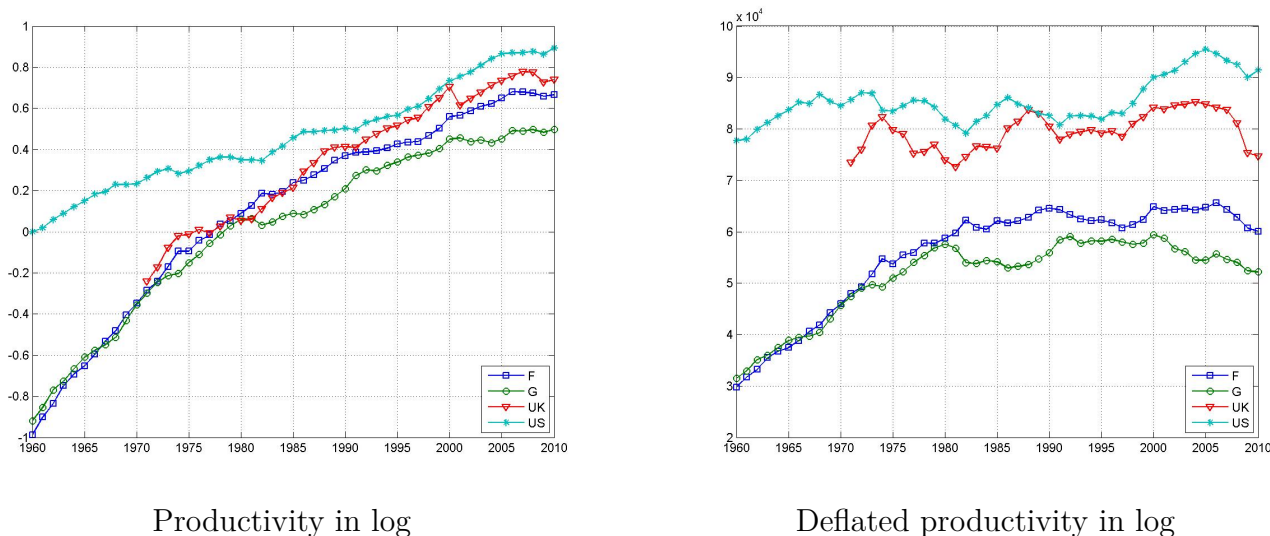
employed worker can received a "social minimum income", which is larger than the UB in UK. Given that this rise of the replacement rate is accompanied by less stringent eligibility rules, it can be viewed as a increase of the non-wage incomes for all the 16-65 years old. This French policy experience can thus be analyzed in a model which do not distinguish between unemployment and non-participation (retirement, pre-retirement...).

Considering the bargaining power of workers, we observe a continuous decline in the US, while the UK shows a very sharp change of direction in the eighties with respect to the evolution observed in the seventies. As it is the case for the labor market outcomes, Germany and France do not share the same dynamics of the labor market institutions over all the sample. Indeed, at the beginning the nineties, with the Kohl government, Germany experiments simultaneously a decline in the replacement rate and in the bargaining power of the workers. Between 1993 and 1997, three laws leads to reduce the eligibility of the unemployment insurance, and the replacement rate. The first Schroder government has chosen to come back on these labor market reforms, but its labor market outcomes leads the second Schroder government to re-introduce more flexibility. After 2002 and the implementation of the Hartz reforms, the decline of the replacement rate is stronger. In France, we observe an continuous increase in the bargaining power of the workers from 1960 to 1990, and a stabilization at a high level after. Finally, in UK, the reforms of the labor market have begun sooner, with the first Thatcher government. The direction of these reforms are the opposite of what is was done in France: the replacement rate largely declines, as well as the bargaining power of the workers.

2.2.4 Technological progress

We recover the Solow residuals, measuring the labor augmenting technological process, from the production function as $A = \left(\frac{Y}{K^{1-\alpha}}\right)^{1/\alpha} \frac{1}{Nh}$. Figure 7 reports the logarithm of the TFP time series, the raw series (left panel) and the deflated one (right panel). The left panel suggests that there exist some "breaks" in these time series.

Figure 7: Solow residuals in log



For what it regards the "European" economies, there is a vast literature which asserts the existence of a period of technological catching-up after the material destructions of the WWII period. In order to capture this feature, we proceed in a very simplistic manner: we identify a linear trend for the TFP using only data starting from the mid (for France) or end (for UK) of the eighties and then we use it to deflate the whole sample data. In this way our deflated TFP can keep the path of a technological catch up. This identification of the technological progress in Europe then consists to compute the expectations of the agents by setting the rate of growth of the technological progress at its long run value, the catch-up period being a transitory period during which the level of the technological progress is under its long run value. The convergence toward this long run trend is effective in the middle of the eighties. For the US, we observe a break in 1990: the TFP seems to be higher after this year. Hence, as for the catch-up story in France and Germany, we assume that the TFP rate of growth is not affected by this episode. This rate of growth is estimated over the period 1960-1990. We then identify 1990-2010 as a transitory period where the level of the TFP is beyond its long run value.

3 Employment rates and hours per worker: a theoretical model

The model we use is a neoclassical growth model with search and matching frictions in the labor market. It is composed by a representative household, a representative firm and Government which runs a balanced budget every period. We present the equilibrium under the assumption of dynamic perfect foresight.

3.1 Labor market

In the labor market the evolution of the stock of employment is given by the new matches M_t which add to the non-destroyed jobs $(1-s)N_t$: $N_{t+1} = (1-s)N_t + M_t$, where the matching function is $M_t = \Upsilon V_t^\psi (1 - N_t)^{1-\psi}$. We highlight here that the separation rate s is fixed and it differs from country to country. The labor market tightness is given by $\theta_t = \frac{V_t}{1-N_t}$ while $f_t = \Upsilon \theta_t^\psi$ and $q_t = \Upsilon \theta_t^{\psi-1}$ indicate respectively the job finding and the job filling probability.

3.2 Households

The economy is populated by a large number of households, each of them consists of a continuum of identical infinitely lived agents. Each agent can be either employed or non-employed (thus free for occupying a job). Agents pool their incomes inside the household, so that they are fully insured against non-employment idiosyncratic risk. Agents consume and save by accumulating physical capital that they rent to firms. Agents pay taxes on their wage income, capital income, investment decisions and consumption. When they are non-employed they receive benefits from the Government. Investment is subject to capital adjustment costs.⁽²¹⁾ Government expenditure (G_t) can be distinguished in roughly two different types, the collective services expenditure and the individual services one. We consider then that the part of consumption that Government uses for individual services (G_t^{ind}) is a perfect substitute for private consumption, while the part which is affected to collective services (G_t^{col}) enters also in the utility function of household, but in a separate way. This hypothesis seems appropriate since we want to evaluate the welfare consequences of a reduction in tax rates if the "European" type of economy should shift to an "American" taxing system: if Government consumption expenditure is financed by taxes, it is not reasonable to try to evaluate welfare under the hypothesis that Government expenditures are pure waste. The term \bar{c} indicates the presence of a "subsistence" term in consumption: this term is important

⁽²¹⁾While the presence of these costs help in smoothing the reaction of the variable physical capital, the results of the model stay even if they are not present.

to match the "catching up" of the European countries with respect to the development levels of the US in the aftermath of WWII ⁽²²⁾. The benefits perceived during the periods of non-employment are expressed as a fraction (given by the replacement rate ρ) of the wage bill. The program of a household is given by:

$$W^h(N_t, K_t) = \max_{c_t, K_{t+1}} \left\{ \begin{array}{l} \log(c_t + \gamma G_t^{ind} - \bar{c}) + \chi \log(G_t^{col}) + N_t(-\sigma_l \frac{h^{1+\eta}}{1+\eta}) + (1 - N_t)\Gamma^u \\ + \beta W^h(N_{t+1}, K_{t+1}) \end{array} \right\}$$

$$\text{s.t. } I_t(1 + \tau_{i,t}) + c_t(1 + \tau_{c,t}) + \frac{\Phi}{2}(K_{t+1} - (1 + g)K_t)^2 = (1 - \tau_{w,t})[w_t h_t N_t + (1 - N_t)\tilde{b}_t]$$

$$+ \pi_t + (1 - \tau_{k,t})r_t K_t$$

$$K_{t+1} = K_t(1 - \delta) + I_t$$

$$N_{t+1} = (1 - s)N_t + f_t(1 - N_t)$$

where, at the symmetric equilibrium, we have $\tilde{b}_t = \rho_t w_t h_t$. The "subsistence" term changes the individual choices: it reduces the wealth effect when the economy is above its long run steady state. Indeed, with the exogenous growth, this component disappears because $C_t \rightarrow \infty$ when $t \rightarrow \infty$, whereas \bar{c} is constant.

3.3 Firms

There is a representative firm which produces using a Cobb-Douglas technology combining capital K_t and labor input $N_t h_t$: $Y_t = K_t^{1-\alpha}(A_t N_t h_t)^\alpha$. The technological progress A_t is labor augmenting, according to a balanced growth path. In order to hire workers the firm posts vacancies V_t , the unit cost of keeping a vacancy open is given by ω , so that the total costs paid by the firm are given by the wage bill, the rental cost of capital and the vacancy posting costs. The firm's program is given by

$$V^f(N_t) = \max_{V_t, K_t} \left\{ K_t^{1-\alpha}(A_t N_t h_t)^\alpha - w_t h_t N_t - r_t K_t - \omega_t V_t + \beta \frac{\lambda_{t+1}}{\lambda_t} V^f(N_{t+1}) \right\}$$

$$\text{s.t. } N_{t+1} = N_t(1 - s) + q_t V_t.$$

3.4 Wage bargaining

Wage and hours are set by the firm and the worker simultaneously, according to a Nash bargaining scheme. Differently from most models, we allow for a time-varying bargaining

⁽²²⁾See for example Rogerson (2006) [27].

power of the firm ϵ_t

$$\max_{w_t, h_t} \left(\frac{\partial W^h}{\partial N_t} \right)^{1-\epsilon_t} \left(\frac{\partial V^f}{\partial N_t} \lambda_t \right)^{\epsilon_t}$$

The result of the bargaining process is given by the wage and the hour equations:

$$\begin{aligned} w_t h_t = & (1 - \epsilon_t) \underbrace{\left[\alpha \frac{Y_t}{N_t} + \omega_t \left\{ \frac{(1-s)}{q_t} \left(1 - \frac{\phi_{t+1} (1 - \tau_{w,t+1})}{\phi_t (1 - \tau_{w,t})} \right) + \frac{\phi_{t+1} (1 - \tau_{w,t+1})}{\phi_t (1 - \tau_{w,t})} \theta_t \right\} \right]}_{BS} \\ & + \epsilon_t \underbrace{\left[\frac{(1 + \tau_{c,t})}{(1 - \tau_{w,t})} (C_t - \bar{c}) \left(\Gamma^u + \sigma_l \frac{h_t^{1+\eta}}{1 + \eta} \right) + \rho_t w_t h_t \right]}_{RW} \end{aligned} \quad (3.1)$$

$$\sigma_l h_t^\eta = \alpha \frac{Y_t}{N_t h_t} \frac{(1 - \tau_{w,t})}{(1 + \tau_{c,t})} \frac{1}{C_t - \bar{c}} \quad (3.2)$$

where $\phi_t = \frac{1-\epsilon_t}{\epsilon_t}$. Then, the marginal labor cost per employee ($w_t h_t$) expresses the opportunity cost of working as the sum of the bargained surplus (BS) and the reservation wage (RW). The BS is composed by two components: the marginal productivity of the employee and the cost of the search activity⁽²³⁾. During the bargaining process, the firm-worker pair shares the returns on the search process. For the worker, this is equal to the discounted time duration to find a job offer; for the firm, returns are instead equivalent to the discounted time duration to find a worker. These relative time spans cannot be proxied by the ratio of the average duration for these two search processes ($\theta_t = \frac{f_t}{q_t}$)— as it would be the case when bargaining power and taxes are constant ⁽²⁴⁾. Indeed, if workers expect that tomorrow their bargaining powers are close to zero ($\phi_{t+1} \approx 0$), the evaluation of the current match surplus is only driven by the search costs saved by the firm if the job is not destroyed: $(1-s)\frac{\omega}{q_t}$. At the opposite, when the bargaining power of the worker increases ($\phi_{t+1} > \phi_t$), the match value must be depreciated by the firm (it expects a decrease of its bargaining power), whereas the relative time spans must be over-evaluated by the worker because its bargaining power increases. Thus, the value of the search cost is a function of the bargaining power which itself changes over time, and is affected by the time-varying distortions induced by the taxes: this explain why BS is a function of dynamics of ϵ and τ . The RW is given by the sum of the marginal rate of substitution of consumption for employment ($C_t - \bar{c}$) $\left(\Gamma^u + \sigma_l \frac{h_t^{1+\eta}}{1+\eta} \right)$ and the non-employment benefits $\rho_t w_t h_t$. In the basic case where the bargaining power of the workers is nil ($\epsilon_t = 1, \forall t$), a gap, equals to $\frac{1}{1-\rho_t}$, between the real wage and the marginal

⁽²³⁾Note that in the simple case where the bargaining power and the taxes are constant over time, we simply have $BS = \alpha \frac{Y_t}{N_t} + \omega \theta_t$.

⁽²⁴⁾See for example Burda, Weder (2010) [4] for a discussion about the implication for business cycle fluctuations of the presence of a time-varying tax wedge in the wage equation.

rate of substitution of consumption for employment persists, because the non-employment benefits are proportional to the average wage. By rising the labor costs, this gap reduces the equilibrium employment rate.

Since we are assuming an efficient bargaining process, the equilibrium number of hours (the intensive labor supply) is determined jointly with wages. The equation (3.2) shows that, at the symmetric equilibrium, the solution is such that the marginal rate of substitution of consumption for an hour worked is equal to the marginal product of an hour worked, net of the tax wedge. This expression does not introduce any labor market institutions because we assume an efficient bargaining process over the hours worked, so that the hours contracts are only affected directly by the different taxes.

3.5 Equilibrium

To close the model, the market clearing conditions on the goods market must be satisfied

$$Y_t = C_t + G_t^{col} + I_t + \omega_t V_t + \frac{\Phi}{2} (K_{t+1} - (1 + g)K_t)^2 \quad \text{with } C_t = c_t + G_t^{ind}$$

whereas the Government budget constraint is balanced at each date through lump-sum transfers given to the agents:

$$TR_t = \tau_{c,t}C_t + \tau_{w,t}(w_t h_t N_t + \rho_t w_t h_t (1 - N_t)) + \tau_{i,t}I_t + \tau_{k,t}r_t K_t - \rho_t w_t h_t (1 - N_t) - G_t^{col} - G_t^{ind}$$

The model we described is a neoclassical growth model which allows for balanced growth path; in the economy we have two sources of growth: population is growing at rate g_n , as well as technological progress, which is growing at the constant rate g_A . Each of the three countries is characterized by a different rate of growth, but here we just stress that in order to have a stationary model, we deflate all growing variables by the common rate of growth $g = g_A + g_n$ ⁽²⁵⁾.

4 Quantitative results

The model is solved in perfect foresight: the path of all exogenous variables is known to the agents from the beginning⁽²⁶⁾. First of all, we present our calibration strategy. Secondly,

⁽²⁵⁾See the Appendix A for a complete description of the equation of the stationarized model.

⁽²⁶⁾We show in the appendix D that the paths are not greatly modified when the policy changes are unexpected. Given this robustness check, we prefer to present the results based on perfect forecasts because they avoid to introduce an arbitrary timing of the "knowledge" of the reforms by the market participants.

we plot the simulated series and the actual ones for the four countries ⁽²⁷⁾, once the model is simulated with the identified parameters and the exogenous variables are specific to each country. We then choose to focus mainly on the two countries at the extreme of the spectrum: the US and France. We inspect the functioning of the model by considering a steady state version to study the impact of a permanent change in policy variable on both the intensive margin (hours per worker) and the extensive one (in this case represented by labor market tightness).

4.1 Identification of parameters

In order to solve the model, we need to identify some parameters. The set of all parameters is given by $\Theta = \{\beta, \delta, \sigma_l, \eta, \alpha, g_A, \bar{c}, \Upsilon, \psi, \omega, \Gamma^u, s, g_n, \Phi, \frac{G^{col}}{Y}\}$. We choose to calibrate the following subset of parameters $\Theta_1 = \{\beta, \delta, \alpha, \eta, \psi, s, g_A, g_n, \frac{G^{col}}{Y}, \Phi\}$.

We set $\beta = 0.98$, $\delta = 0.05$ and $\alpha = 0.3$ according to standard values in the literature when the period of reference is one year. In particular for the evidence about the depreciation rate, we follow Gomme, Rupert (2007) [8]. In the long run, we have the following restrictions: *i*) $1 = \frac{\beta}{1+g} \left[1 - \delta + \frac{1-\tau_k}{1+\tau_i} r \right]$, *ii*) $r = (1 - \alpha) \frac{Y}{K}$ and *iii*) $I = (\delta + g)K$. For an observed value for $E[I/Y] \approx 0.17$ in the US, we obtain a gross interest rate $r \approx 12.35\%$, and thus $r - \delta \approx 7.35\%$, using *ii*) and *iii*) (the demand of capital). Remark that our value of α is such that the first equation (the supply of capital) is also satisfied, for the average values of the tax rates on capital and investment. Nevertheless, this standard calibration leads, as usual, to an over-estimation of the interest rate ⁽²⁸⁾. We therefore chose to reduce the interest rate of an amount which correspond to risk premium ($\kappa = 20\%$) which is paid by the firm when the uncertainty on its investment projects is taken into account by the financing contract. This leads us to $r(1 - \kappa) - \delta \approx 4.88\%$, which is more close to the long run value of the asset returns.

Our parameter η is set to a value of 0.6 which implies a labor supply elasticity of 1.66. The parameter ψ , which represents the elasticity of the matching function with respect to vacancies, is set to a value of 0.5, which is an average of the range of possible values identified by Petrongolo, Pissarides (2001) [24] and it is widely adopted in the literature. For what it regards the country-specific separation rate s , we use the estimation results in Elsby et al. (2008) [6].

We then use information from our data to give a value to g_A and g_n . Using our computation of the Solow residual for each country (see section 2.2.4), we fit a linear trend which is our g_A . Similarly, we fit a linear trend to the population 15-64 and we call it g_n . The total

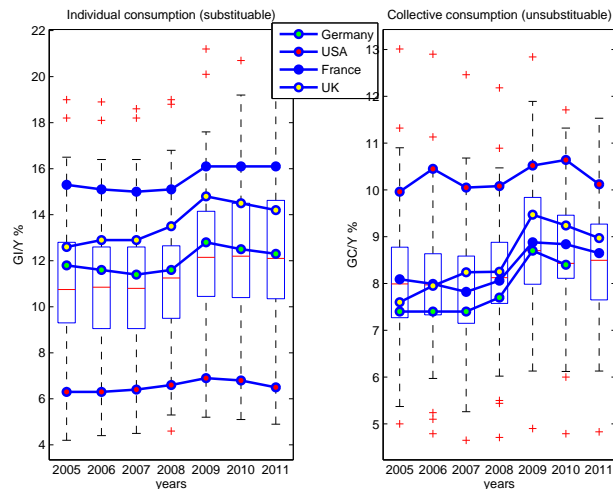
⁽²⁷⁾We remember that for Germany we will use our model to simulate only the period starting from 1990.

⁽²⁸⁾See Gomme and Rupert (2007) for a more complete discussion on this point.

rate of growth of all non-stationary variables will therefore be $g = g_A + g_n$.

Data for the ratio of Government expenditure in collective goods are taken from the OECD ⁽²⁹⁾. As documented in Figure 8, France, Germany and UK feature collective public

Figure 8: A decomposition of the government expenditures (OECD data)



In each panel of Figure 8, for each year, the central mark is the median value over a sample of 32 OECD countries. The edges of the box are the 25th and 75th percentiles, the whiskers extend to the most extreme data points not considered outliers, and outliers are plotted individually.

spending (in proportion to GDP) comparable to other OECD countries ⁽³⁰⁾, while the US are characterized by a higher share of collective public spending. By contrast, individual government spending in France, Germany and UK are much larger than the average of the OECD countries, while in the US the share of individual government expenditure is very low.

We then remain with four parameters to identify: $\Theta_2 = \{\sigma_l, \Gamma^u, \bar{c}_i, \Upsilon_i, \omega_i\}$ for $i = US, FR, UK, GER$. Our restrictions are that the asymptotic preferences are common to all countries, whereas two set of parameters are country-specific: the scale parameters of the matching functions and the vacancy posting cost. The value of \bar{c} should be different from zero only for countries which are not the US: as in Rogerson (2006) [27], Ohanian et al. (2008) [21] and McDaniel (2011) [17], we introduce a consumption subsistence term in order to capture the fact that the level of hours worked was higher at the beginning of the sample in the countries which experienced a lower level of productivity with respect to the US

⁽²⁹⁾Table COFOG, Government expenditure by function.

⁽³⁰⁾Data come from Langot et al. (2014) [13].

Table 2: Calibrated parameters I

Common	β	δ	η	α	ψ	Φ
	0.98	0.05	0.66	0.3	0.5	10
	s	g_A	g_n	$\frac{G^{col}}{Y}$		
US	0.12	0.017	0.0136	0.098		
FR	0.15	0.019	0.0069	0.085		
UK	0.17	0.024	0.0033	0.090		
GE	0.12	0.018	0.004	0.069		

⁽³¹⁾ The calibration procedure finds parameter values Θ_2 that minimize the distance between theoretical and observed moments $\Psi^{theo}(\Theta_2) - \Psi$. The function $\Psi^{theo}(\Theta_2)$ comes from the numerical solution of the model. The moments provided by the data are $\Psi = \{\bar{N}_i, \bar{h}_i, \theta_i, \bar{\Delta h}_j\}$, for $i = US, FR, UK, GER$ and $j = FR, UK, GER$ and where $\bar{X} = \frac{1}{T-t_0} \sum_{t=t_0}^T X_t$, with $T = 2007 \forall X = N, h$ and $\bar{\Delta h} = h_{1975} - h_{1960}$. To build the times series of θ , we use the data for vacancies for the US, France and UK come from, respectively, the Composite Help-Wanted Index developed by Barnichon (2010) [2] ⁽³²⁾, DARES⁽³³⁾ and the Office for National Statistics ⁽³⁴⁾. The targets of $\theta = \frac{V}{1-N}$ are 0.7, 0.5 and 0.8 for respectively the US, France and the UK. For Germany, because of lack of comparable data, we choose to keep the same value for the vacancy posting cost that we use for France ⁽³⁵⁾. We report in Table 3 the values of the identified parameters.

Table 3: Identified parameters

parameter	US	FR	UK	GE
σ_l	5.5	5.5	5.5	5.5
Γ^u	-0.09	-0.09	-0.09	-0.09
Υ	0.55	0.4	0.45	0.38
\bar{c}	0	0.35	0.4	0.2
$\frac{\omega V}{Y}$	0.12	0.03	0.06	0.04

⁽³¹⁾The presence of the term \bar{c} is important from a quantitative point of view to match the fact that in countries which were relatively poorer than the US hours worked were much higher at the beginning of the sample period and decreased very strongly in the catching-up period; see the Appendix E for a more detailed discussion.

⁽³²⁾available through the author's website <https://sites.google.com/site/registbarnichon/research>

⁽³³⁾Direction de l'Animation de la Recherche, des Etudes et des Statistiques, which belongs to the French Ministry of Labor, www.emploi.gouv.fr

⁽³⁴⁾<http://www.ons.gov.uk>

⁽³⁵⁾Remark that $\dim(\Theta_2) = 12$ (with $\omega_{GER} = \omega_{FR}$) whereas $\dim(\Psi) = 14$ (because θ_{GER} is unknown): there are over-identifying restrictions. Beyond the graphical analysis, we report in the text the value of the MSE of each time series in order to have a statistical measure of the fit.

With these restrictions, any difference in the behavior of the economic variables predicted by the model will be therefore guided by difference in policy variables or "technological" conditions (both the Solow's residuals, the matching technology efficiency and the search costs).

4.2 The fit of the model

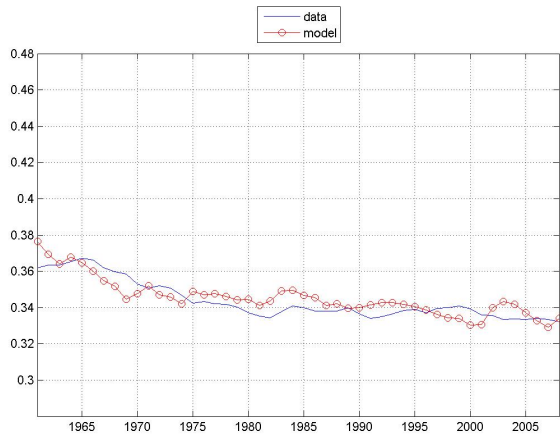
Given that the parameters are set in order to match some average values $\{h; N\}$ and the slope over the first years of h in France, Germany and UK, the ability of the model to fit the observed data must be tested using additional information: we check that the model correctly predicts the long run evolution of the variables of interest (the intensive and the extensive margin). We report additional information in appendix G: the simulated values of the investment/output ratio and of total hours) in section G.1, and, in section G.2, a decomposition of the contribution of each exogenous set of variables in the model outcomes.

First, for the US, the taxes remain stable, whereas the labor market institutions (LMI) shift slowly in favor of the firms. When the simulation is performed using these country-specific policy variables, the model then predict a increase in the employment rate and a small decline in the hours per worker. The composition of these adjustments of the two labor market margins lead to a predicted total hours which slightly increase during the period. These results for the US economy are reported in Figure 22 and is compared to the observed data. Given that there is no break point in the time series of the taxes and the LMI in the US, the model reproduces the small and continuous changes observed simultaneously in the hours per worker and employment rate. The Mean Square Errors (MSE) for the hours worked and for employment are respectively equal to $6.3781 * 10^{-5}$ and $7.6451 * 10^{-4}$.

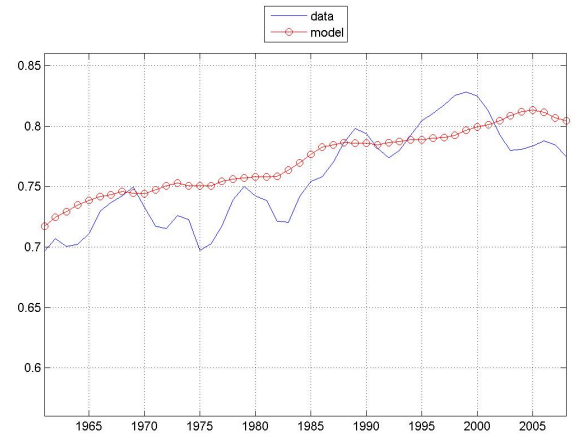
In France, the tax wedge does experiment at least three regimes. At the beginning of the sample, till 1985, it increases rapidly. Between 1985 and 2000, its increase is less great, whereas after 2000, we observe a significant decline (see Figure 4). In response to these tax rates, the model predicts that each French worker works fewer hours, with a small recovery after 2000. This prediction is not rejected by the data (see Figure 10).

On the French labor market, while the bargaining power of the workers remains stable over all the sample, it is not the case for the replacement rate: it largely increases in 1981 and 1985, then it remains stable and it begins to decline after 2002 (see Figure 6). In response to these large changes in the LMI, the employment rate predicted by the model largely declines at the beginning of the eighties, and increases at the end of the sample. These predictions are consistent with the data (see Figure 10), even if the elasticity of the model slightly overestimates the changes in the employment rate in France. The MSE for the hours worked and for employment are respectively equal to $2.9847 * 10^{-4}$ and $8.7555 * 10^{-4}$.

Figure 9: The US economy

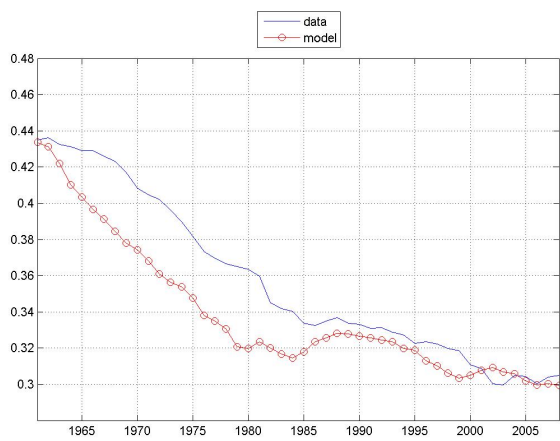


Hours per worker

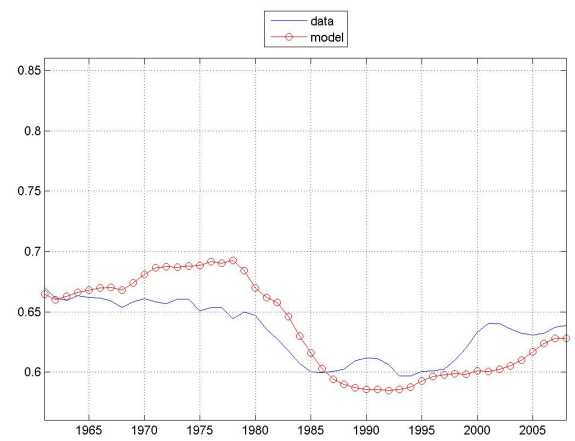


Employment rate

Figure 10: The French economy



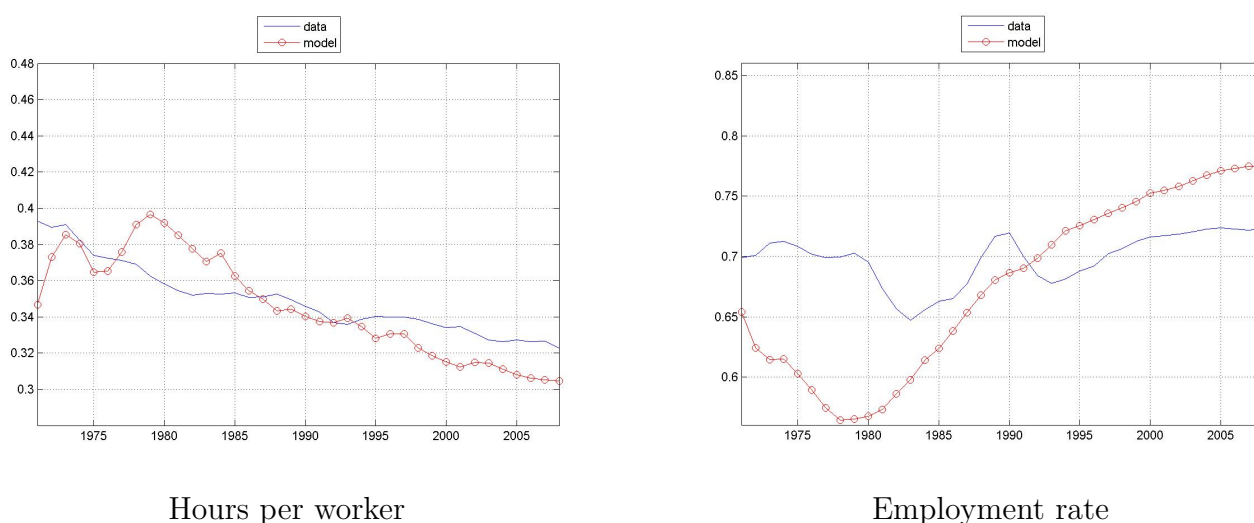
Hours per worker



Employment rate

The overall fit for the UK is worse than for the other two economies: the MSE for the hours worked and for employment are respectively equal to $2.7089 * 10^{-4}$ and $4.3 * 10^{-4}$. We can remark that the model does a fairly good job in reproducing the dynamics for hours but only starting from the mid eighties, once the tax wedge on consumption and labor income stabilizes. For what it regards the employment rate, the model captures a tendency to decrease till the end of the seventies, and a recovery afterwards, mirroring the change in the evolution of labor market institutions; however it overestimates the elasticity of employment rate to these changes and it doesn't capture the evolutions of the nineties.

Figure 11: The UK economy



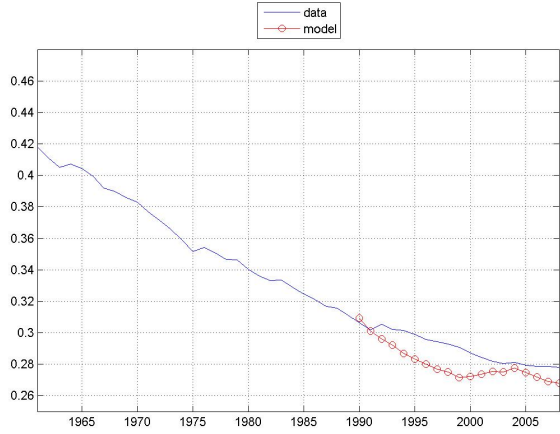
For what it regards Germany, the simulation (starting from the reunification period) does capture the decrease in the intensive margin which continues during the nineties and the positive trend in the employment rate. the overall fit of the model in terms of MSE for hours and employment gives respectively $7.6588 * 10^{-5}$ and $1.6 * 10^{-4}$.

4.3 Inspecting the mechanisms of the model

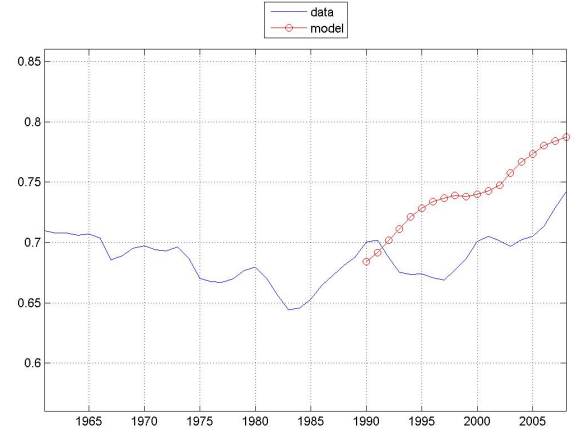
In this subsection, we propose to inspect the mechanisms of the model by focussing on a steady state analysis ⁽³⁶⁾. Because of concerns about the effectiveness of our message, for the steady state experiments (as well as for the following counterfactual experiments of the

⁽³⁶⁾In the appendix F, we analyze the dynamics of the outside value of employment, which is usually presented as a key variable of the Shimer (2005) [29] puzzle. It is shown that general equilibrium approach puts into perspective this "puzzle".

Figure 12: The German economy



Hours per worker



Employment rate

following Section 5), we decide to concentrate on the two countries which lie at the extreme of the spectrum for what it regards the evolution of policy variables: the US and France⁽³⁷⁾.

4.3.1 Steady state analysis

Before considering the counterfactual experiments in the fully dynamic model, we look at final steady state and study the comparative static effects of a change in a policy variable (tax rates, replacement rate or bargaining power). For this purpose we can start from the steady state equations which represent our model and reduce the size of the system to only two equations in two variables (hours and labor market tightness) to plot the two relations that determine the equilibrium. In doing this, we follow Fang, Rogerson (2009) [7] who also give a diagrammatic representation of the equilibrium of a search and matching model with both the extensive and the intensive margin of labor input. Differently from their exercise, our model includes capital as well as the replacement rate and is calibrated to match empirical data. At the steady state, we can reduce the system of three steady state equations for three unknowns $\{C, h, \theta\}$: (i) the FOC on hours per worker, (ii) the combination of the wage equation with the job creation condition, and (iii) the aggregate market clearing. This

⁽³⁷⁾ Consider moreover that the simulation for Germany regards fewer years and the performance of the model for the UK is worse.

system is given by:

$$Ch^{1+\eta} = \frac{\alpha (1 - \tau_w)}{\sigma_l (1 + \tau_c)} \left(\frac{r}{1 - \alpha} \right)^{-\frac{(1-\alpha)}{\alpha}} Ah \quad (4.1)$$

$$\frac{\omega\theta^{1-\psi}}{\Upsilon} \left[\frac{1}{\beta} - (1 - s) \right] + \left(\frac{1 - \epsilon}{1 - \rho\epsilon} \right) \omega\theta = \frac{\epsilon}{1 - \rho\epsilon} \left[\begin{array}{l} (1 - \rho)\alpha Ah \left(\frac{r}{1 - \alpha} \right)^{-\frac{(1-\alpha)}{\alpha}} \\ -C \left(\frac{1+\tau_c}{1-\tau_w} \right) \left(\Gamma^u + \sigma_l \frac{h^{1+\eta}}{1+\eta} \right) \end{array} \right] \quad (4.2)$$

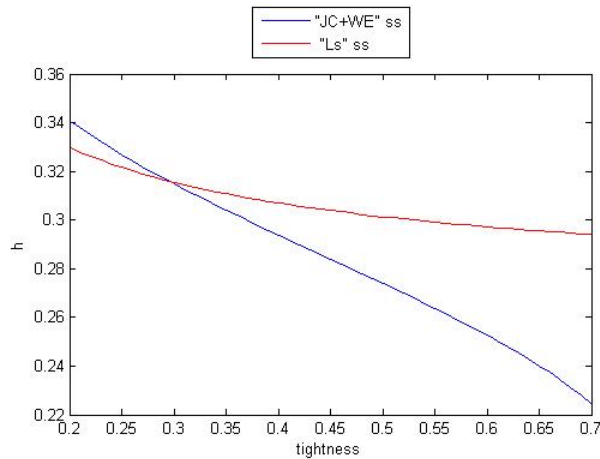
$$C + \omega\theta \left(1 - \frac{1}{1 + \frac{n+s}{\Upsilon\theta^\psi}} \right) = Ah \left(\frac{r}{1 - \alpha} \right)^{-\frac{(1-\alpha)}{\alpha}} \left(\frac{\left(\frac{r}{1 - \alpha} \right) - (g + \delta)}{1 + \frac{n+s}{\Upsilon\theta^\psi}} \right) \quad (4.3)$$

We substitute the expression for consumption which comes from the aggregate market clearing condition in the two other relations, two obtain a system in two equations and two variables that can be represented in the space (θ, h) :

$$\begin{aligned} \sigma_l h^{1+\eta} C(\theta, h) &= \alpha Ah \frac{(1 - \tau_w)}{(1 + \tau_c)} \left(\frac{r}{1 - \alpha} \right)^{-\frac{(1-\alpha)}{\alpha}} \\ \frac{\omega\theta^{1-\psi}}{\Upsilon} \left[\frac{1}{\beta} - (1 - s) \right] + \left(\frac{1 - \epsilon}{1 - \rho\epsilon} \right) \omega\theta &= \left(\frac{\epsilon}{1 - \rho\epsilon} \right) \left\{ \begin{array}{l} (1 - \rho)\alpha Ah \left(\frac{r}{1 - \alpha} \right)^{-\frac{(1-\alpha)}{\alpha}} \\ - \left(\Gamma^u + \sigma_l \frac{h^{1+\eta}}{1+\eta} \right) \frac{(1+\tau_c)}{(1-\tau_w)} C(\theta, h) \end{array} \right\} \end{aligned}$$

The first equation can be interpreted as the locus where the "intensive margin" is at the equilibrium, whereas the second is the locus where the "extensive margin" is at the equilibrium. These two relations can be interpreted as showing a trade off between the two margins of

Figure 13: Steady state in France



labor input for households as well as firms. Hence, our analysis can be viewed as an extension

to general equilibrium framework to the one proposed by Fang, Rogerson (2009) [7]. The general equilibrium approach implies that the consumption is a function of the equilibrium values of h and θ , denoted by $C(\theta, h)$ and implicitly defined by the equation (4.3).

Proposition 1 *For an equilibrium employment rate larger than $1/3$, the resource constraint (4.3) always implies that $\epsilon_{C|h} > 0$ and $\epsilon_{C|\theta} > 0$*

Proof. See appendix C.1. ■ Given that an employment rate equal to $1/3$ is largely below what has been observed for all countries along all the time span, so that we can confidently say that in our model an increase in tightness implies an increase in consumption.

Proposition 2 *If the resource constraint (4.3) leads to $\epsilon_{C|h} > 0$ and $\epsilon_{C|\theta} > 0$, then the equilibrium intensive margin (equation 4.1) defines a negative relationship between hours worked h and the labor market tightness θ .*

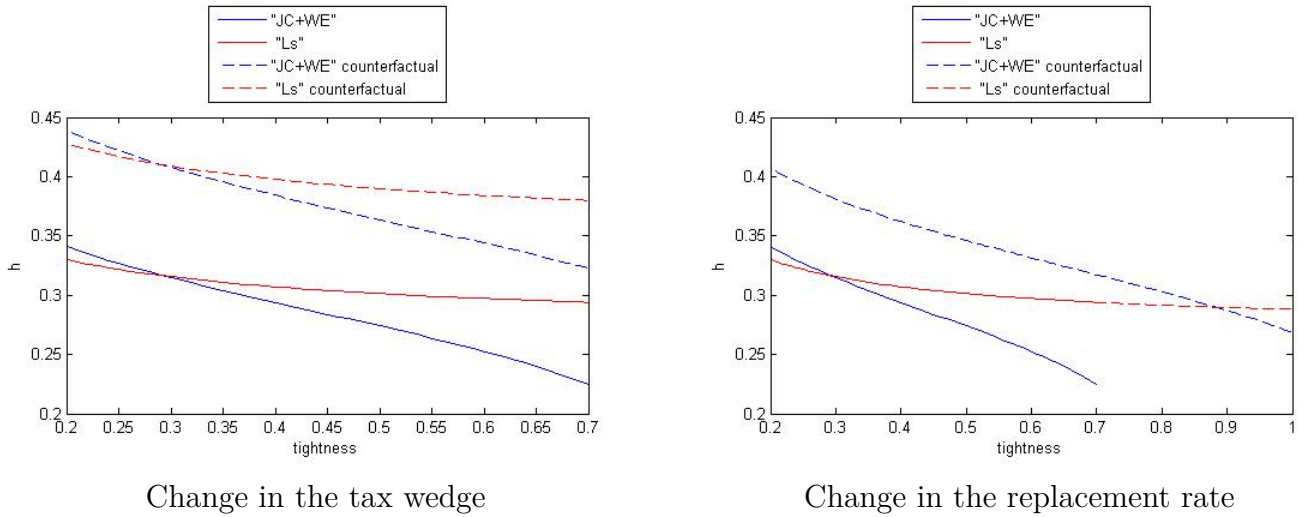
Proof. Differentiating the equations (4.1) and (4.3) leads to $(\eta + \epsilon_{C|h}) \frac{dh}{h} = -\epsilon_{C|\theta} \frac{d\theta}{\theta}$, where $\epsilon_{C|h} = C'_h \frac{h}{C(\theta, h)}$ and $\epsilon_{C|\theta} = C'_\theta \frac{\theta}{C(\theta, h)}$ where $C(\theta, h)$ is the consumption compatible with the resource constraint. ■ The optimal choice of the intensive margin shows that the labor market tightness acts as wealth for the agent decisions: a high θ implies a high employment rate and then lower incentives to work for each individual in the household.

Proposition 3 *For $\frac{\eta}{1+\eta} > \rho$, there exists a value for $\Gamma^u < 0$ such that the equilibrium extensive margin (equation 4.2) defines a negative relationship between hours worked h and the labor market tightness θ .*

Proof. See appendix C.2. ■ The optimal choice of the extensive margin shows that a high h implies an higher gap between the disutility at work and at home, leading to lower incentives to work for an additional worker in the household. This can be view as an increase of the wage reservation dues to the scarcity of leisure when h increase.

Comparative statics: counterfactual experiments. Let's now perform a comparative statics analysis: what would be on the final steady state the impact of a reduction in tax rates? We can for example apply the US tax rates on consumption and labor income to France and check the functioning of the model. We expect both the labor supply and the labor market equilibrium curves to shift upward. The overall effect on hours per worker is unambiguously positive, while the effect on the extensive margin is almost null. We can see graphically this mechanism in the left panel of the Figure 14. Indeed, for our calibration, the tax reduction gives incentives to work longer and at the same time, it also reduce the labor costs, inducing a rise in employment. But, this last effect is damped by the increase in

Figure 14: SS comparative statics - France



the reservation wage of worker who now want to work longer. Hence, the reservation wage dynamics evicts the positive effect of the tax reduction on the employment rate.

What if we simulate the French economy with the benefits system of the US? We see in the graphical representation in the right panel of the Figure 14 that a change in the replacement rate doesn't affect the labor supply curve, but it does affect the labor market equilibrium curve: it shifts toward the right so that the effect on the employment rate is strongly positive. Remark that when the workers are numerous to work, the generated wealth effect leads them to reduce their individual effort at work. Thus, the reservation wage is reduced and then the impact of the reduction of the replacement rate amplified. Considering that the "intensive margin" curve is very flat, the effect on hours per worker (which overall decrease) is quantitatively less important.

5 Counterfactual experiments: evaluating policies

Once we understood the mains forces at work in the model, we can perform a counterfactual experiment with the fully fledged dynamic version. We concentrate on the two countries which lie at the extreme of the spectrum for what it regards the evolution of policy variables: the US and France:

- i)* which would have been the evolution of the two margins of labor input in France with the path of policy variables which characterized the post WWII history of the US?
- ii)* what would have been the welfare implications of such an alternative historical path?

5.1 The impact of policies on the two margins

Let us start by comparing the evolution of the simulated variables for France when the economy is fed with the complete set of policy variables which characterize the US. This means that in our first experiment the two economies differ only with respect to the path of technological progress and few parameters: the separation rate, the rate of growth of population and the matching efficiency. In Figure 15 we see the results of the simulations of the French economy with both US taxes and labor market institutions.

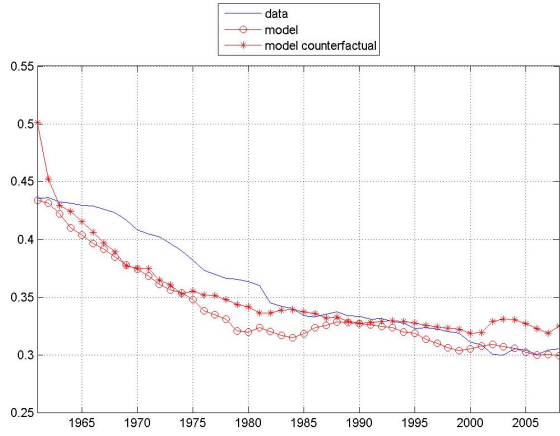
In average, the fictive French employee works longer and has more chance to be employed than the US employee. The productivity gap explains these hours and employment gaps: the French worker being initially poorest than the American, he chooses to work longer and accept a lower reservation wage that gives incentives for firms to hire. If we look at the evolution of hours per worker, we can notice that starting from the mid 1970s, once completed the technological catch-up process, the evolution of hours would have mimicked that one of the US: this is natural once we set the preference parameters to be the same in the two countries. If we look at the evolution of the employment rate, it seems that with the labor market institutional arrangements which characterize the US, France would have observed a spectacularly high employment rate: at the end of the simulation, the employment is 87.5% in this "fictive" France, whereas it is equal to 62.5% in the "real" economy. This simulation then gives the relative importance of the labor gaps: when both hours and employment gaps are simultaneously decreased, it appears that the employment rate is the more elastic⁽³⁸⁾.

Let us consider a situation in which we have the evolution of the tax rates of the US in France, while keeping the labor market arrangements of this country; we see in Figure 16 that the amount of hours worked would be even higher than one predicted for the US: the agents, suffering less "distortions" on the intensive margin, would have tried to compensate the "low" labor input coming from the extensive margin. The important point here is that a simple reduction of the tax rates can not have a significant impact on employment because the decline of the labor cost they induce is evicted by the rise in reservation wage of the workers who work now longer. These results are the counterparts, in a dynamic framework, of the comparative static that is lead using the propositions 2 and 3.

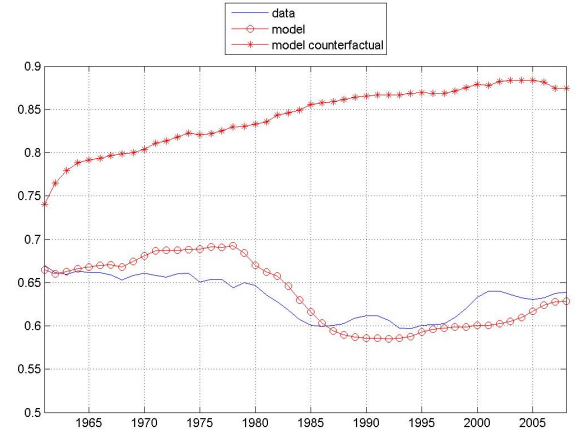
If we look at Figure 17, which shows the case of France with the US labor market institutions and its own taxation system, we see that in this case we would have observed an employment level even higher than in the US. Agents in France, being strongly taxed, choose to work less than a American worker. The general equilibrium effects magnify these

⁽³⁸⁾Speaking about the model functioning, the gap between the France with the US policy and the US comes from the fact that the two countries differ with respect to structural parameters which are the separation rate, the population growth rate and the matching efficiency, so that the overall "employment rate elasticity" differs between the two countries.

Figure 15: Counterfactual: US taxes and LMI in France

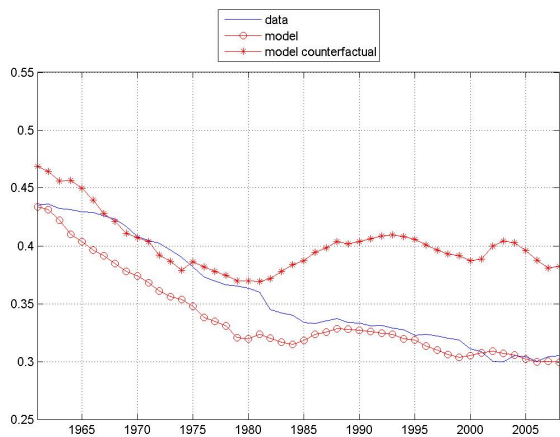


Hours per worker (h)

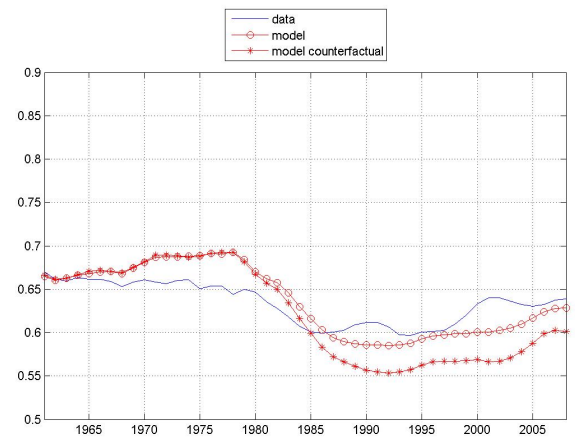


Employment rate (N)

Figure 16: Counterfactual: France with US taxes



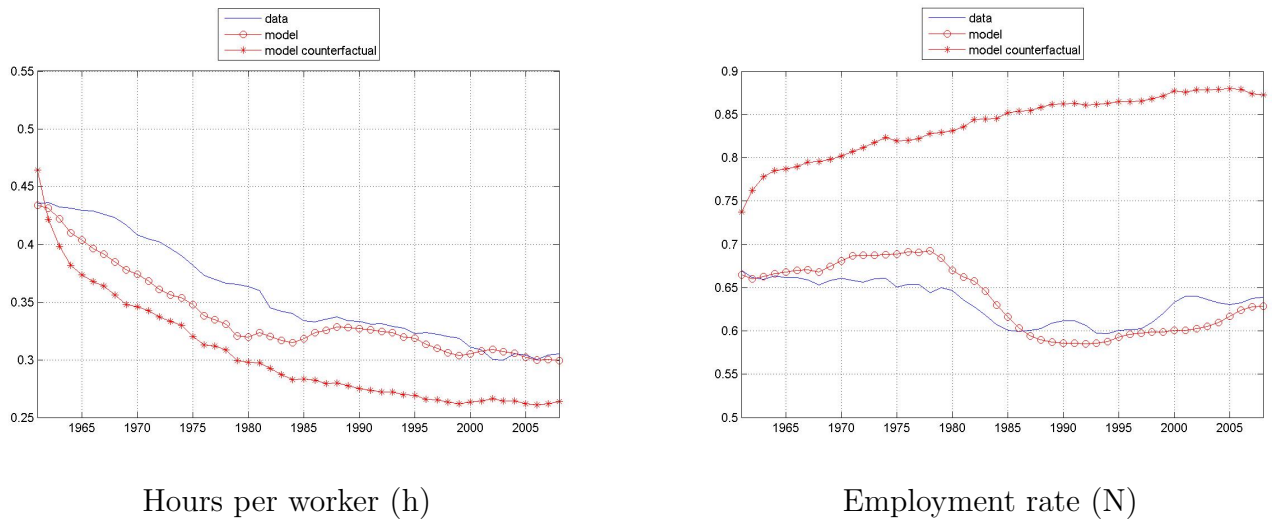
Hours per worker (h)



Employment rate (N)

two direct effects. First, the large "chance" to be employed is perceived as a wealth for the agent, that reduces her incentive to work longer. Second, when worker reduces her hours worked, its reservation decrease, leading to magnify the rise in the employment rate. This also make a echo to the static comparative derived using the propositions 2 and 3.

Figure 17: Counterfactual: France with US LMI



5.2 The impact of policies on welfare

To evaluate these welfare gains we compute the welfare of France in all the three previous cases. The "reference" value of welfare is computed as the one that would be chosen by a benevolent social planner: the Government consumption expenditure in collective goods would be financed in a non-distortive way through lump-sum taxes. The planner observes the same dynamics of the technological shocks as the private agents do.

We therefore compute the rate at which we should "tax" the social planner in order to have an equivalent welfare level than the one of the market economy at each date. We define a factor λ_t entering the social welfare function as following

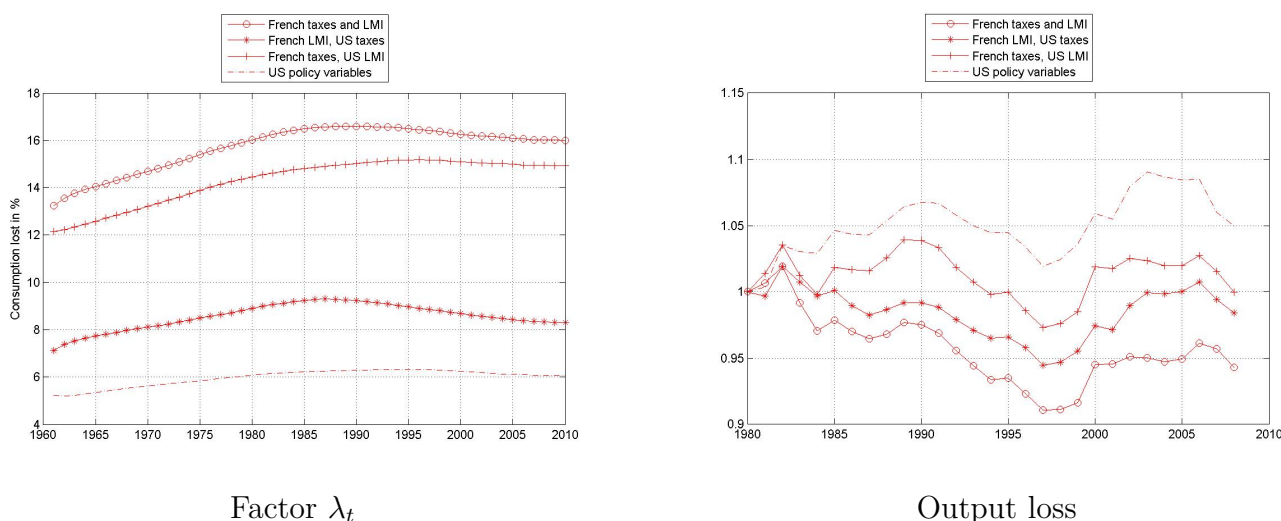
$$\left. \begin{array}{l} W_t^{actual} \\ W_t^{cf} \end{array} \right\} = \log((1 - \lambda_t)C_t) + \zeta \log(G_t^{col}) + N_t \left(-\sigma_l \frac{h_t^{1+\eta}}{1+\eta} \right) + (1 - N_t)\Gamma^u + \beta W_{t+1}$$

The factor λ_t gives the losses in consumption units implied by the market allocations (*actual* or *cf* as counterfactual).

The value of ζ is derived by considering the choice that a social planner would make,

i.e. considering the FOCs with respect to privately consumed goods and collective goods: $\zeta = \frac{G_t^{col}}{C_t}$. In order to find the value of ζ we consider the time series for G_t^{col} and we compute the mean value over the period, i.e. $\zeta = \frac{\bar{G}^{col}}{\bar{C}}$ ⁽³⁹⁾, and we obtain 0.139 and 0.1219 respectively for US and France.

Figure 18: Factor λ_t and output loss for France



The result of our evaluation of the loss in terms of life-time consumption are shown in Figure 18. This exercise can add some information with respect to the one made by Prescott (2004) [25]. If we look at the left panel in Figure 18, we observe the smallest welfare gap with respect to a "first best" economy if all US policy variables had characterized the French economy: in this case, the welfare gap would have increased till a level of 6%. Let us now consider a year, as for example 2005: at this time the welfare gain in changing the taxation scheme from the French to the American one, conditional on the fact that we keep the labor market institutions which characterize France, is measured by the difference between the line with circles and the one with stars: the vertical distance gives 7.5 percentage points. The idea is that if we do not distinguish between the intensive and the extensive margin of total hours worked, we measure this gap looking at the distance between the circle line and the dashed-one, which would imply an overestimate of welfare gaps of around 2 percentage points. Anyway, it is an evaluation of the welfare gains of shifting to a "US style tax system" which is clearly below the 19% suggested by Prescott (2004) [25]. Our results suggest that there is a complementarity between these two policies: if only one of two labor gap is reduced,

⁽³⁹⁾Given that this ratio is not constant over the period, our calibration procedure does insure that we are at the first best allocation matches the observed time series of the collective government expenditures.

then the other margin react in the opposite direction, damping the total effect of the reform. At the opposite, if tax rates and labor market institutions are reformed, then it is possible to exhibit positive effect on both extensive and intensive margin.

Finally, we can also consider the percentage points of output growth which has been "lost" in France with respect to what could have happened with a set of policy variables as in the US: in the right panel of Figure 18, we plot the history of output in the actual French economy and in the three counterfactual experiments normalized at their respective level in 1980. Given the size of these "structural" losses each year, it seems that the keynesian "Okun gap" is negligible for France: all the efforts of the policy makers must be devoted to the reduction of the "Haberger triangles", which are increasing, representing today more than 10 points of percentage of the output.

6 Conclusions

In this paper we developed a dynamic perfect foresight model of neoclassical growth with labor market frictions which can account for the long run evolutions of both the extensive and the intensive margin of labor supply. We calibrated it to reproduce the evolutions of these two margins for four representative countries such as the United States, France, UK and Germany. We then focused on the differences between two countries which represent the "extreme" cases in terms of policy choices: the US and France. These two countries showed in fact very different evolutions with respect to the aggregate labor supply. We highlighted that there are non trivial interactions between the two margins, and we confirmed that quantitatively the evolution of the tax wedge can explain the path of hours worked per worker while labor market institutions ⁽⁴⁰⁾ cannot be ignored if we want to explain the evolution of employment.

The interest of the model relies on the fact that it allows us to perform counterfactual experiments and to evaluate the welfare losses or gains of implementing some reforms: in this sense the country of interest is France, and we ask ourselves which would be the welfare gains of switching towards an "American-style" system for taxes and institutions. One of the potential policy implication of our exercise is that it seems pointless to advocate for a "liberalization" of labor market institutions if we do not think of diminishing the tax wedge at the same time.

⁽⁴⁰⁾We limit ourselves to consider only the bargaining power of workers and the replacement rate

References

- [1] David Andolfatto. Business Cycles and Labor-Market Search. *American Economic Review*, 86(1):112–32, March 1996.
- [2] Régis Barnichon. Building a composite help-wanted index. *Economics Letters*, 109(3):175 – 178, 2010.
- [3] Olivier Blanchard and Justin Wolfers. The Role of Shocks and Institutions in the Rise of European Unemployment: The Aggregate Evidence. *The Economic Journal*, 110(462):C1–C33, March 2000.
- [4] Michael Burda and Mark Weder. Payroll Taxes, Social Insurance and Business Cycles. 2010.
- [5] Gabriel Chodorow-Reich and Loukas Karabarbounis. The cyclical cost of the opportunity cost of employment. Working Paper 19678, National Bureau of Economic Research, November 2013.
- [6] Michael Elsby, Bart Hobijn, and Aysegül Sahin. Unemployment dynamics in the oecd. Working Paper 14617, National Bureau of Economic Research, December 2008.
- [7] Lei Fang and Richard Rogerson. Policy Analysis In A Matching Model With Intensive And Extensive Margins. *International Economic Review*, 50(4):1153–1168, November 2009.
- [8] Paul Gomme and Peter Rupert. Theory, measurement and calibration of macroeconomic models. *Journal of Monetary Economics*, 54(2):460–497, March 2007.
- [9] Jonathan Gruber and David Wise. Social security programs and retirement around the world: Fiscal implications, introduction and summary. Working Paper 11290, National Bureau of Economic Research, May 2005.
- [10] Marcus Hagedorn and Iourii Manovskii. The Cyclical Behavior of Equilibrium Unemployment and Vacancies Revisited. *American Economic Review*, 98(4):1692–1706, September 2008.
- [11] Robert E. Hall. Employment Fluctuations with Equilibrium Wage Stickiness. *American Economic Review*, 95(1):50–65, March 2005.
- [12] François Langot. Unemployment and Real Business Cycle : A Matching Model. In P.Y. Henin, editor, *Advances in Economic Business Cycles Theory*. Springer Verlag, 1995.
- [13] François Langot, Lise Patureau, and Thepthida Sopraseuth. Optimal Fiscal Devaluation. Banque de France working papers, Banque de France, 2014.
- [14] François Langot and Coralia Quintero Rojas. Explaining the Evolution of Hours Worked and Employment across OECD Countries: An Equilibrium Search Approach. IZA Discussion Papers 3364, Institute for the Study of Labor (IZA), February 2008.

- [15] Lars Ljungqvist and Thomas J. Sargent. Do Taxes Explain European Employment? Indivisible Labor, Human Capital, Lotteries, and Savings. In *NBER Macroeconomics Annual 2006, Volume 21*, NBER Chapters, pages 181–246. National Bureau of Economic Research, Inc, 2007.
- [16] Cara McDaniel. Average tax rates on consumption, investment, labor and capital in the OECD 1950-2003. Working papers, Arizona State University, December 2007.
- [17] Cara McDaniel. Forces Shaping Hours Worked in the OECD, 1960-2004. *American Economic Journal: Macroeconomics*, 3(4):27–52, October 2011.
- [18] Monika Merz. Search in the labor market and the real business cycle. *Journal of Monetary Economics*, 36(2):269–300, November 1995.
- [19] Dale T. Mortensen and Christopher A. Pissarides. New developments in models of search in the labor market. In O. Ashenfelter and D. Card, editors, *Handbook of Labor Economics*, volume 3 of *Handbook of Labor Economics*, chapter 39, pages 2567–2627. Elsevier, 1999.
- [20] Stephen Nickell. Unemployment and labor market rigidities: Europe versus North America. *Journal of Economic Perspectives*, 11(3):55–74, Summer 1997.
- [21] Lee Ohanian, Andrea Raffo, and Richard Rogerson. Long-term changes in labor supply and taxes: Evidence from OECD countries, 1956-2004. *Journal of Monetary Economics*, 55(8):1353–1362, November 2008.
- [22] Lee E. Ohanian and Andrea Raffo. Aggregate hours worked in OECD countries: New measurement and implications for business cycles. *Journal of Monetary Economics*, 59(1):40–56, 2012.
- [23] Christopher A. Pissarides. Unemployment And Hours Of Work: The North Atlantic Divide Revisited. *International Economic Review*, 48(1):1–36, 02 2007.
- [24] Christopher A. Pissarides and Barbara Petrongolo. Looking into the Black Box: A Survey of the Matching Function. *Journal of Economic Literature*, 39(2):390–431, June 2001.
- [25] Edward C. Prescott. Why do Americans work so much more than Europeans? *Quarterly Review*, (Jul):2–13, 2004.
- [26] Kelly S. Ragan. Taxes and Time Use:Fiscal Policy in a Household Production Model. *American Economic Journal: Macroeconomics*, 1(5):168–92, 2013.
- [27] Richard Rogerson. Understanding Differences in Hours Worked. *Review of Economic Dynamics*, 9(3):365–409, July 2006.
- [28] Richard Rogerson. Taxation and Market Work: Is Scandinavia an Outlier? NBER Working Papers 12890, National Bureau of Economic Research, Inc, February 2007.

- [29] Robert Shimer. The Cyclical Behavior of Equilibrium Unemployment and Vacancies. *American Economic Review*, 95(1):25–49, March 2005.

Appendix

A Stationarized FOCs

Here there are the equations that compose the model, where the convention is to indicate with \widehat{X} a variable X , for $X \in \{A, C, Y, K, I, w, \omega\}$ which is deflated by the rate of growth, ie. $\widehat{X}_t = X_t/(1+g)^t$. The set of equations used to solve the dynamic paths of the model is then:

$$\begin{aligned}
 (1+n)N_{t+1} &= (1-s)N_t + \min \left[\min(V_t, 1-N_t), \Upsilon V_t^\psi (1-N_t)^{1-\psi} \right] \\
 (1+g)\widehat{K}_{t+1} &= (1-\delta)\widehat{K}_t + \widehat{I}_t \\
 \widehat{Y}_t &= \widehat{K}_t^{1-\alpha} (\widehat{A}_t N_t h_t)^\alpha \\
 \widehat{Y}_t &= \widehat{C}_t + \widehat{I}_t + \widehat{G}_t^{col} + \widehat{\omega} V_t \\
 \frac{(\widehat{C}_{t+1} - \bar{c})}{(\widehat{C}_t - \bar{c})} &= \frac{\beta}{(1+g)} \frac{(1+\tau_{c,t})}{(1+\tau_{c,t+1})(1+\tau_{i,t+1})} [r_{t+1}(1-\tau_{k,t+1}) + (1-\delta)(1+\tau_{i,t+1})] \\
 r_t &= (1-\alpha)\widehat{K}_t^{-\alpha} (\widehat{A}_t N_t h_t)^\alpha \\
 \frac{\widehat{\omega}\theta_t}{f_t} &= \frac{\beta}{(1+g)} \frac{(\widehat{C}_t - \bar{c})(1+\tau_{c,t})}{(\widehat{C}_{t+1} - \bar{c})(1+\tau_{c,t+1})} \left[\alpha \frac{\widehat{Y}_{t+1}}{N_{t+1}} - \widehat{w}_{t+1} h_{t+1} + (1-s) \frac{\widehat{\omega}\theta_{t+1}}{f_{t+1}} \right] \\
 \widehat{w}_t h_t &= \frac{(1-\epsilon_t)}{(1-\rho_t \epsilon_t)} \left[\alpha \frac{\widehat{Y}_t}{N_t} + \widehat{\omega} \left(\frac{1-s}{q_t} \left(1 - \left(\frac{\phi_{t+1}}{\phi_t} \frac{(1-\tau_{w,t+1})}{(1-\tau_{w,t})} \right) + \frac{\phi_{t+1}}{\phi_t} \frac{(1-\tau_{w,t+1})}{(1-\tau_{w,t})} \theta_t \right) \right) \right] \\
 &\quad + \frac{\epsilon_t}{1-\rho_t \epsilon_t} \frac{(1+\tau_{c,t})}{(1-\tau_{w,t})} (\widehat{C}_t - \bar{c}) \left(\Gamma^u + \sigma_l \frac{h_t^{(1+\eta)}}{(1+\eta)} \right) \\
 f_t &= \min \left(\frac{\Upsilon V_t^\psi (1-N_t)^{1-\psi}}{1-N_t}, 1 \right) \\
 q_t &= \min \left(\frac{\Upsilon V_t^\psi (1-N_t)^{1-\psi}}{V_t}, 1 \right) \\
 \theta_t &= \frac{V_t}{U_t}
 \end{aligned}$$

In order to ensure that the job finding rate and the job filling rate are in $[0, 1]$, we take the minimum between the unconstrained definition of these rates and 1. In accordance with these constraints, the matching function is also redefined.

B Steady state analysis

We then firstly report the complete model

$$\begin{aligned}
 (n + s)N &= q(\theta)V \\
 (g + \delta)K &= I \\
 Y &= K^{1-\alpha}(ANh)^\alpha \\
 Y &= C + I + G^{col} + \omega V \\
 1 &= \frac{\beta}{1+g} \left[r \frac{(1-\tau_k)}{(1+\tau_i)} + 1 - \delta \right] \\
 r &= (1-\alpha) \left(\frac{K}{ANh} \right)^{-\alpha} \\
 \frac{\omega\theta}{f(\theta)} &= \beta \left[\alpha \frac{Y}{N} - wh + (1-s) \frac{\omega\theta}{f(\theta)} \right] \\
 wh &= \frac{1-\epsilon}{1-\rho\epsilon} \left(\alpha \frac{Y}{N} + \omega\theta \right) + \frac{\epsilon}{1-\rho\epsilon} \frac{1+\tau_c}{1-\tau_w} C \left(\Gamma^u + \sigma_l \frac{h^{1+\eta}}{1+\eta} \right) \\
 \theta &= \frac{V}{U} \\
 f(\theta) &= \Upsilon \theta^\psi \\
 q(\theta) &= \frac{\Upsilon}{\theta^{1-\psi}} \\
 N\sigma_l h^\eta &= \alpha \frac{Y}{N} \frac{1-\tau_w}{1+\tau_c} \frac{1}{C}
 \end{aligned}$$

We then report for clarity an intermediate step in the substitution. Let's define the two following values:

$$\begin{aligned}
 r &= \left[\frac{1+g}{\beta} - (1-\delta) \right] \frac{1+\tau_{inv}}{1-\tau_k} \\
 K &= \left(\frac{r}{1-\alpha} \right)^{-\frac{1}{\alpha}} ANh
 \end{aligned}$$

We can therefore reduce the system of steady state equations to

$$\begin{aligned}
N(\theta) &= \left(\frac{n+s}{\Upsilon\theta^\psi} + 1 \right)^{-1} \\
Y(\theta, h) &= \left(\frac{r}{1-\alpha} \right)^{-\frac{(1-\alpha)}{\alpha}} AN(\theta)h \\
K(\theta, h) &= \left(\frac{r}{1-\alpha} \right)^{-\frac{1}{\alpha}} AN(\theta)h \\
I(\theta, h) &= (g+\delta)K(\theta, h) \\
C(\theta, h) &= \frac{Y(\theta, h)}{N(\theta)} \frac{\alpha}{\sigma_l} \frac{(1-\tau_w)}{(1+\tau_c)} \frac{1}{h^{1+\eta}} \\
\frac{\omega\theta}{\Upsilon\theta^\psi} \left[\frac{1}{\beta} - (1-s) \right] + \frac{1-\epsilon}{1-\rho\epsilon} \omega\theta &= \frac{\epsilon}{1-\rho\epsilon} \left[(1-\rho)\alpha \frac{Y(\theta, h)}{N(\theta, h)} \right. \\
&\quad \left. - \left(\frac{1+\tau_c}{1-\tau_w} \right) C(\theta, h) \left(\Gamma^u + \sigma_l \frac{h^{1+\eta}}{1+\eta} \right) \right] \\
Y(\theta, h) &= C(\theta, h) + I(\theta, h) + \omega\theta(1-N(\theta))
\end{aligned}$$

By continuing in substituting, we arrive to the following three equations which represent respectively: the labor supply equation, the combination of the wage equation and the job opening condition and the aggregate market clearing

$$\begin{aligned}
Ch^{1+\eta} &= \frac{\alpha}{\sigma_l} \frac{(1-\tau_w)}{(1+\tau_c)} \left(\frac{r}{1-\alpha} \right)^{-\frac{(1-\alpha)}{\alpha}} Ah \\
\frac{\omega\theta^{1-\psi}}{\Upsilon} \left[\frac{1}{\beta} - (1-s) \right] + \left(\frac{1-\epsilon}{1-\rho\epsilon} \right) \omega\theta &= \frac{\epsilon}{1-\rho\epsilon} \left[(1-\rho)\alpha Ah \left(\frac{r}{1-\alpha} \right)^{-\frac{(1-\alpha)}{\alpha}} \right. \\
&\quad \left. - C \left(\frac{1+\tau_c}{1-\tau_w} \right) \left(\Gamma^u + \sigma_l \frac{h^{1+\eta}}{1+\eta} \right) \right] \\
C + \omega\theta \left(1 - \left(\frac{n+s}{\Upsilon\theta^\psi} + 1 \right)^{-1} \right) &= Ah \left(\frac{r}{1-\alpha} \right)^{-\frac{(1-\alpha)}{\alpha}} \left(\frac{n+s}{\Upsilon\theta^\psi} + 1 \right)^{-1} \left(\left(\frac{r}{1-\alpha} \right) - (g+\delta) \right)
\end{aligned}$$

C Proofs of proposition

C.1 Proof of proposition 1

Let $\epsilon_{C|h} = C'_h \frac{h}{C(\theta, h)}$ and $\epsilon_{C|\theta} = C'_\theta \frac{\theta}{C(\theta, h)}$ where $C(\theta, h)$ is the consumption compatible with the resource constraint. Differentiating the equation (4.3) with respect to h , we obtain $dC = \frac{-A(\delta+g-\frac{r}{1-\alpha})}{\left(\frac{n+s}{\Upsilon\theta^\psi}+1\right)\left(\frac{r}{1-\alpha}\right)^{\frac{1}{\alpha}}} dh$. Let us substitute the expression of the equilibrium real interest rate,

which is given by $r = \left(\frac{1+\tau_{inv}}{1-\tau_k}\right) \left(\frac{1+g}{\beta} - (1-\delta)\right)$, to obtain that

$$C'_h \frac{h}{C(\theta, h)} = \frac{-A \left[\delta + g - \left(\frac{1+\tau_{inv}}{1-\tau_k}\right) \left(\frac{1+g}{\beta} - (1-\delta)\right) \left(\frac{1}{1-\alpha}\right) \right]}{\left(\frac{n+s}{\Upsilon\theta^\psi} + 1\right) \left(\frac{r}{1-\alpha}\right)^{\frac{1}{\alpha}}} \frac{h}{C(\theta, h)} > 0$$

because the term inside parenthesis in the numerator is always negative.⁽⁴¹⁾ If we now check the derivative with respect to tightness, we find the following expression:

$$\frac{\partial C}{\partial \theta} = \omega \left[\frac{\Upsilon\theta^\psi}{n+s} (1+\psi) - 1 \right] + \left[\frac{-Ah\psi(n+s)(\delta + g - \frac{r}{1-\alpha})}{\Upsilon\theta^{1+\psi} \left(\frac{n+s}{\Upsilon\theta^\psi} + 1\right)^2 \left(\frac{r}{1-\alpha}\right)^{\frac{1}{\alpha}}} \right]$$

The second term in square brackets is always positive, so that the overall sign depends on the conditions on the first term in square bracket; we find that a sufficient condition to have an overall positive sign at the numerator is that the first term in square brackets is positive too, which is satisfied if $\frac{\Upsilon\theta^\psi}{n+s} (1+\psi) > 1$. Since we know that in steady state $\frac{f}{n+s} = \frac{N}{1-N}$, the previous condition reduces to $\frac{N}{1-N} (1+\psi) > 1$, i.e. $N > \frac{1}{2+\psi}$. In the most "restrictive" case ($\psi = 1$), the condition would be satisfied for an employment rate at least equal to $1/3$

C.2 Proof of proposition 3

Differentiating the equation (4.2) leads to

$$\left\{ \begin{array}{l} (1-\psi) \frac{\omega\theta^{1-\psi}}{\Upsilon} \left[\frac{1}{\beta} - (1-s) \right] \\ + \left(\frac{1-\epsilon}{1-\rho\epsilon} \right) \omega\theta + \left(\frac{\epsilon}{1-\rho\epsilon} \right) \Gamma^u \frac{(1+\tau_c)}{(1-\tau_w)} C\epsilon_{C|\theta} \end{array} \right\} \frac{d\theta}{\theta} = \left(\frac{\epsilon}{1-\rho\epsilon} \right) \left\{ \begin{array}{l} \frac{\eta-\rho(1+\eta)}{1+\eta} \alpha Ah \left(\frac{r}{1-\alpha} \right)^{-\frac{(1-\alpha)}{\alpha}} \\ - \Gamma^u \frac{(1+\tau_c)}{(1-\tau_w)} C\epsilon_{C|h} \end{array} \right\} \frac{dh}{h}$$

With $\Gamma_u < 0$ and $\eta - \rho(1+\eta) > 0$, the RHS is positive whereas the sign of the LHS is undermined. Its sign is negative iff

$$(1-\psi) \frac{\omega\theta^{1-\psi}}{\Upsilon} \left[\frac{1}{\beta} - (1-s) \right] + \left(\frac{1-\epsilon}{1-\rho\epsilon} \right) \omega\theta + \left(\frac{\epsilon}{1-\rho\epsilon} \right) \Gamma^u \frac{(1+\tau_c)}{(1-\tau_w)} C\epsilon_{C|\theta} < 0$$

⁽⁴¹⁾This can be seen more easily if we re-arrange it as following

$$\delta \left(1 - \frac{1}{1-\alpha} \left(\frac{1+\tau_{inv}}{1-\tau_k} \right) \right) + \frac{1}{1-\alpha} \left(\frac{1+\tau_{inv}}{1-\tau_k} \right) \left(1 - \frac{1}{\beta} \right) + g \left(1 - \frac{1}{\beta(1-\alpha) \left(\frac{1+\tau_{inv}}{1-\tau_k} \right)} \right) < 0$$

If we assume that $\Gamma_u = -\sigma_l \frac{e^{1+\eta}}{1+\eta}$ with $e < h$, we then have $\Gamma_u = -\mu\sigma_l \frac{h^{1+\eta}}{1+\eta}$ with $\mu < 1$. Using (4.1), we deduce that $\Gamma^u \frac{(1+\tau_c)}{(1-\tau_w)} C = -\mu \frac{\alpha}{1+\eta} \frac{Y}{N}$. Hence the previous restriction can be rewritten as follows:

$$(1-\psi) \frac{\omega\theta^{1-\psi}}{\Upsilon} \left[\frac{1}{\beta} - (1-s) \right] + \left(\frac{1-\epsilon}{1-\rho\epsilon} \right) \omega\theta < \left(\frac{\epsilon}{1-\rho\epsilon} \right) \mu \frac{\alpha}{1+\eta} \frac{Y}{N} \epsilon_{C|\theta}$$

Which is, when we assume for simplicity that $n \rightarrow 0$ and $\beta \rightarrow 1$

$$\frac{\omega\theta(1-N)}{Y} \left[1-\psi + \frac{1-\epsilon}{1-\rho\epsilon} \frac{N}{1-N} \right] < \left(\frac{\epsilon}{1-\rho\epsilon} \right) \mu \frac{\alpha}{1+\eta} \frac{\frac{\alpha}{1-\alpha}(g+\delta)}{\frac{\alpha}{1-\alpha}(g+\delta) - \frac{\omega\theta(1-N)}{Y}}$$

given that

$$\begin{aligned} \frac{dC}{dh} \frac{h}{C} &= Ah \left(\frac{r}{1-\alpha} \right)^{-\frac{(1-\alpha)}{\alpha}} \frac{1}{C} \left(\frac{\left(\frac{r}{1-\alpha} \right) - (g+\delta)}{1 + \frac{n+s}{\Upsilon\theta^\psi}} \right) \\ \Leftrightarrow \epsilon_{C|h} &= \frac{Y}{C} \left[\frac{r}{1-\alpha} - (g+\delta) \right] = \frac{Y \left[\frac{r}{1-\alpha} - (g+\delta) \right]}{Y \left[\frac{r}{1-\alpha} - (g+\delta) \right] - \omega\theta(1-N)} \end{aligned}$$

Assume that $x = \frac{\omega\theta(1-N)}{Y} < 1$ is given, we have

$$x \left[1-\psi + \frac{1-\epsilon}{1-\rho\epsilon} \frac{N}{1-N} \right] < \left(\frac{\epsilon}{1-\rho\epsilon} \right) \mu \frac{\alpha}{1+\eta} \frac{\frac{\alpha}{1-\alpha}(g+\delta)}{\frac{\alpha}{1-\alpha}(g+\delta) - x}$$

where the largest value of the LHS is obtained for $N = 1/2$. Hence a sufficient condition is

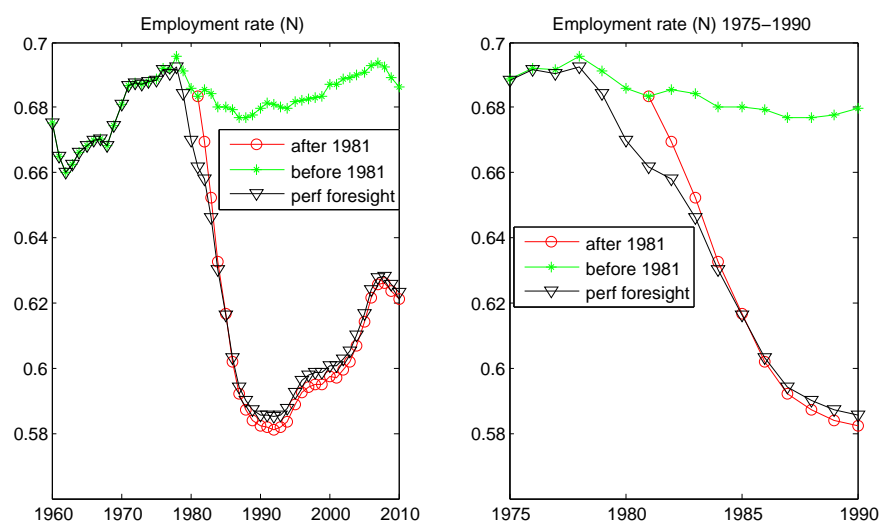
$$x \left[1-\psi + \frac{1-\epsilon}{1-\rho\epsilon} \right] \left(\frac{1-\rho\epsilon}{\epsilon} \right) \frac{1+\eta}{\alpha} \frac{\frac{\alpha}{1-\alpha}(g+\delta) - x}{\frac{\alpha}{1-\alpha}(g+\delta)} < \mu$$

D Unexpected policy change

In order to check the impact of the perfect foresight hypothesis, we perform the following experiment: we suppose that at the beginning of the sample (in 1960), agents in France correctly anticipated the path of all exogenous variables but the replacement rate (we choose this policy change because the break in the evolution of the replacement rate is the largest among all changes of exogenous variables). The agents in fact consider that the replacement rate evolves till 1980 and then remains constant at its 1981 level. When the Government changes in 1981 and so does the policy about the replacement rate, agents are surprised. At this point, the full new path of the replacement rate is revealed. The results of this

experiment are shown in Figure 19.

Figure 19: Surprise in 1981 for replacement rate



Until 1978, both scenarii, under perfect forecast (black line with triangles) or with unexpected change (green line with stars), produce the same results. After 1979, the firms begin to reduce their vacancies if the policy change is correctly anticipated. Thus, the reduction of the employment rate is slightly smoothed until 1984, year after which the employment rates become again the same, as we can see looking at the lines which represent the perfect foresight case (black line with triangles) and the reaction of agents when they are surprised (red line with circles). Nevertheless, the gap between the two scenarii does never exceed 1.5 percentage point, which can be considered small, given the size of the policy change.

E The role of the subsistence term of consumption \bar{c}

In this section we provide a discussion about the role of the term \bar{c} : as already highlighted in the main text, the term \bar{c} captures the "exceptionality" of the period between 1960s and 1970s for the economies which undertook a "reconstruction" period. In order to check the importance of this hypothesis, we consider an alternative version of the model in which \bar{c} is set to zero: the model would require therefore another set of parameters for both countries to be found by matching the same four moments as in Section 4.1.

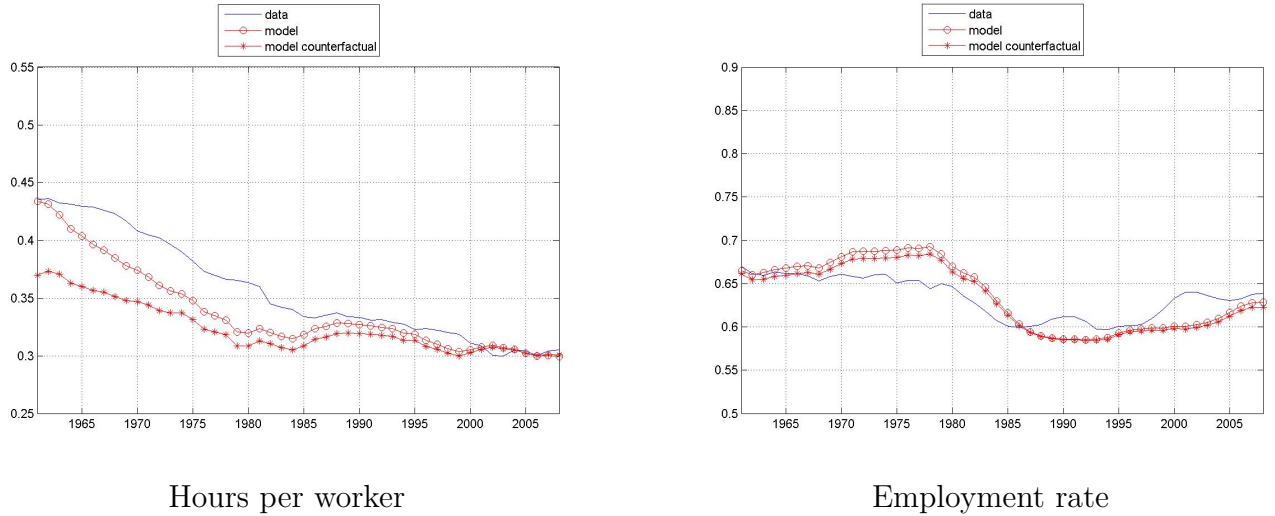
With this alternative calibration, we show the performance of the model in replicating the variables of interest for France. As we can see in Figure 20, without the subsistence term

Table 4: identified parameters

parameter	US	FR
σ_l	5.1	5.1
Γ^u	-0.09	-0.09
Υ	0.6	0.38
\bar{c}	0	0

\bar{c} the model underestimates the level of hours till the mid 1980s; the important point is that it predicts a decrease in hours worked, even if with a lower "speed".

Figure 20: The French economy



We can also compute a simple measure of the "lost" in the fit of the model by considering the Mean Squared Error (MSE) for hours for the two models: the MSE for hours with the alternative model is 3.35 times higher than that one of the benchmark model (the values are respectively $2.8209 * 10^{-4}$ and $9.4368 * 10^{-4}$).

F The flow value of non-employment

As it has been pointed out by Shimer (2005) [29] and Hall (2005) [11] the performance of the search and matching model in reproducing the variability of employment is tightly linked to the mechanisms underlying the wage process, in particular the evolution of the so

called "flow value of non-employment" ⁽⁴²⁾. We check then the evolution over time of the implied flow value of non-employment produced by our model. We report for the reader's convenience the term which enters in the wage equation which represents the flow value of non-employment (or reservation wage):

$$RW_t = \underbrace{\left(\Gamma^u + \sigma_l \frac{h_t^{1+\eta}}{1+\eta} \right) (C_t - \bar{c}) \left(\frac{1 + \tau_c}{1 - \tau_w} \right)}_{\substack{\text{Value of leisure} \\ \text{in consumption goods}}} + \underbrace{\rho_t w_t h_t}_{\substack{\text{Non-employment} \\ \text{benefits}}}$$

We plot the results implied by our model⁽⁴³⁾ in Figure 21.

Figure 21 puts in evidence two things. First of all, the implied flow value of non-employment remains inside some range which is widely accepted in the literature which is [0.4; 0.943], the highest value being provided by Hagedorn, Manovskii (2008) [10] whereas the lowest being the one proposed by Shimer (2005) [29]. Nevertheless, it seems that the general equilibrium value of this flow value of non-employment is closer to the one proposed by Hagedorn, Manovskii (2008) [10]: this is not surprising because our model does not restrict this value to the replacement rate, as it is suggested in Shimer (2005) [29].

Firstly, remark that the levels of flow value of non-employment are quite similar among countries. But it is important to have in mind that in the US and in UK, the bargaining power of the workers is very low, leading the real wage to be close to this flow value of non-employment ⁽⁴⁴⁾, whereas in France, the bargaining power of the workers is large, implying that the real wage is larger than this flow value of non-employment.

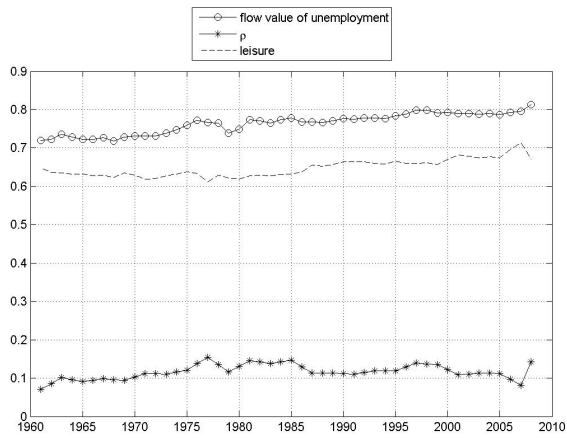
Secondly we remark that the evolution of the flow value of non-employment for our countries is driven by different forces: in France the weight of the non-employment benefit is much more important while the the value of "home staying" decreased (market hours decreased). In the US, the flow value of non-employment increases because the number of hours worked per employee rises over the sample: this endogenously increases the reservation wage of the US workers. In the UK the overall flow value of non-employment started to decrease after the Thatcher reforms (the beginning of the 80s), mainly driven by the decrease of the non-employment benefit. In Germany, the dynamics of the overall reservation wage are mainly driven by the replacement rate, which increased temporarily during the first Schroder government (between the end nineties and the mid 2000), whereas it had decreased during the

⁽⁴²⁾Chodorow-Reich, Karabarbounis (2014) [5] focus on the empirical counterparts of the elements we found in the flow value of non-employment when wages are set through a Nash bargaining mechanism.

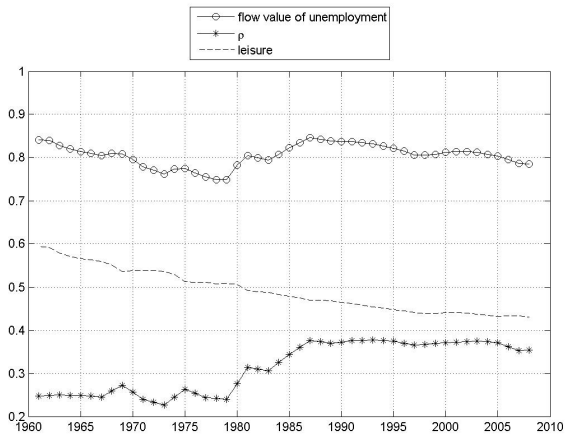
⁽⁴³⁾We plot the measure of the reservation wage normalized with respect to the wage bill $w_t h_t$.

⁽⁴⁴⁾The observation of low bargaining power also supports the views of Hagedorn and Manovskii (2008) [10] who calibrate this parameter at a value equals to 0.061.

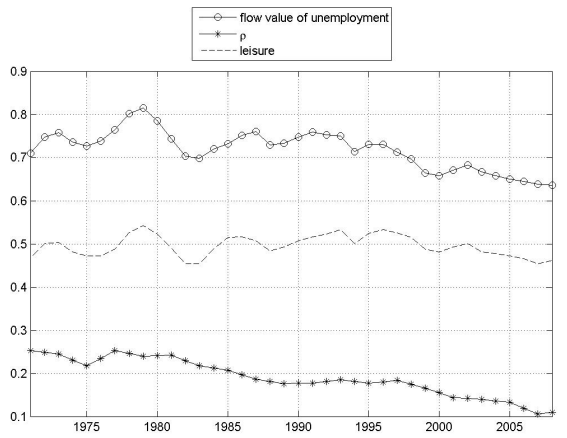
Figure 21: Flow value of non-employment



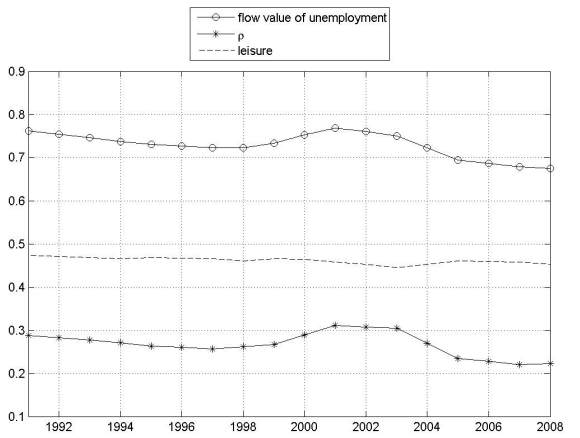
US



France



UK



Germany

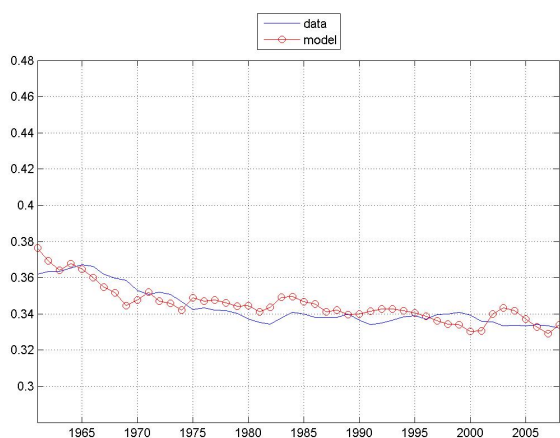
Kohl government and has decreased during the second Schroder government (Hartz reforms). At the opposite, in France, the flow value of non-employment decreases over all the sample: before the large increase of the replacement ratio at the beginning and at the end of the eighties (the Mitterrand reforms), this decline of the reservation wage explains the small increase of the employment rate. After the eighties, this component of the flow value of the non-employment is dominated by the dynamics of the replacement rate: the employment rate declines after the beginning of the eighties. It is only during the 2000s that the large decline of the reservation wage, due to the dynamics of the hours worked, explains the small increase of the employment rate. It is interesting to remark that the decline of the hours worked per employee in France and in Germany has not the same impact on the reservation wage in these two countries: in Germany, the high level of the employment rate allows families to have a higher wealth, that maintains the relative value between the consumption and the leisure, whereas in France, the decline of the employment rate reduces the consumption and thus, reduces the relative leisure value. Thus, the endogeneity of the reservation wage, and more precisely its strong link with the number of hours worked, underline the interest of our general equilibrium approach.

G The fit of the model

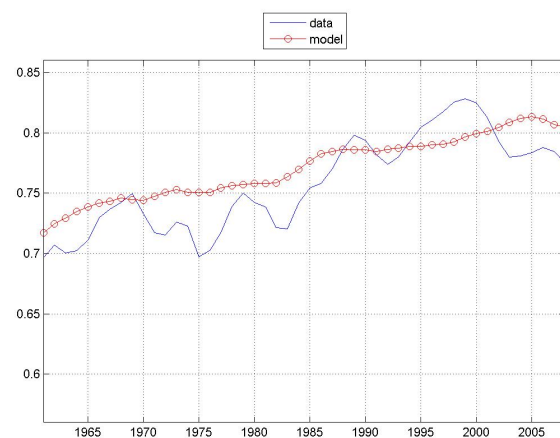
G.1 Additional model predictions

We report the complete set of information about the fit of the model: Figures 22-25 show for each country not only the hours per worker and the employment rate as in the main text, but also total hours and the investment/output ratio.

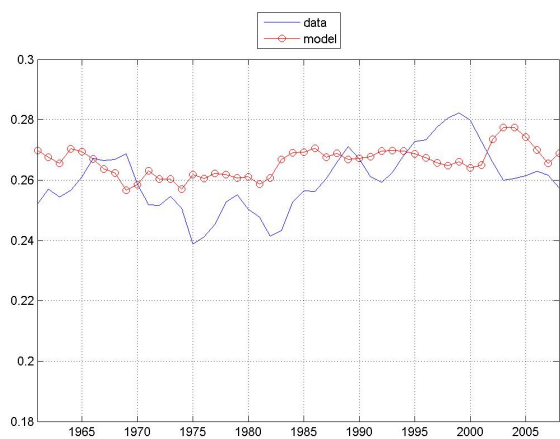
Figure 22: The US economy



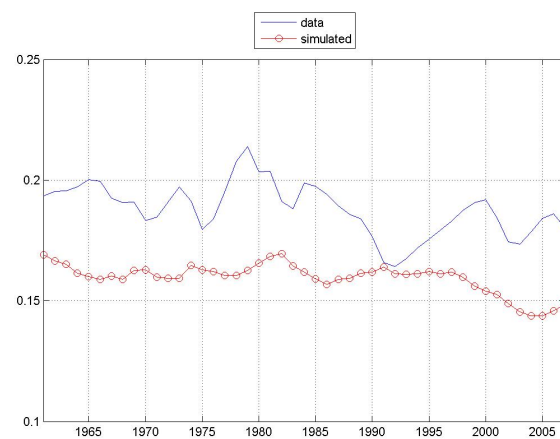
Hours per worker



Employment rate

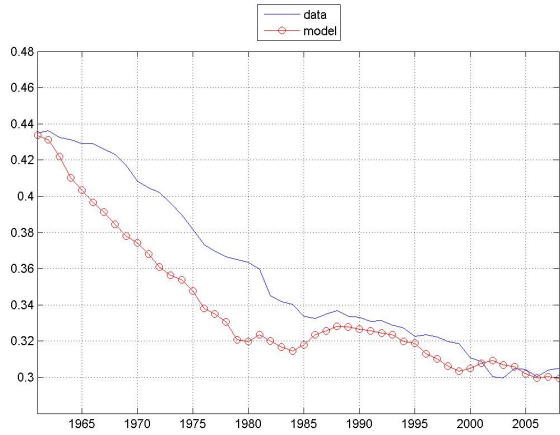


Total hours

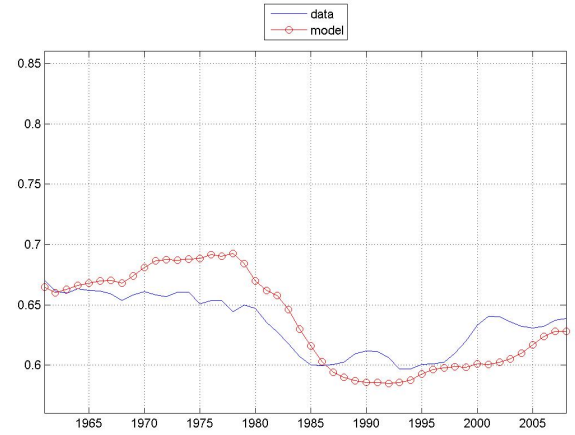


I/Y

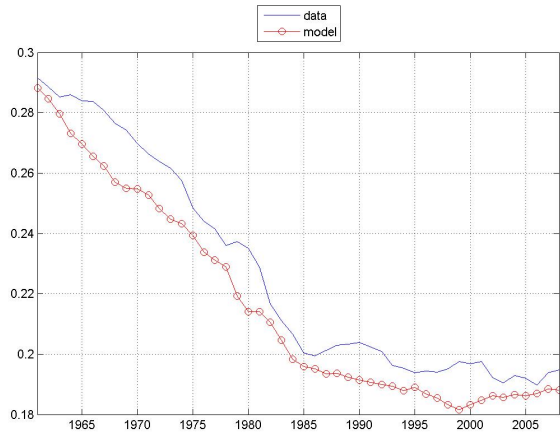
Figure 23: The French economy



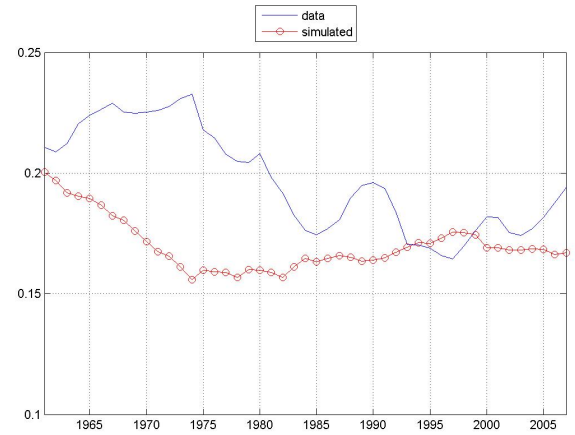
Hours per worker



Employment rate

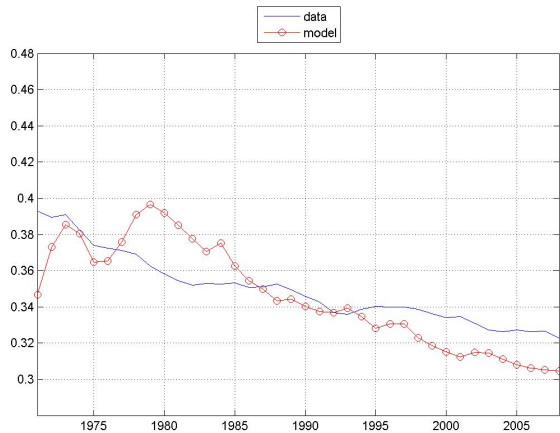


Total hours

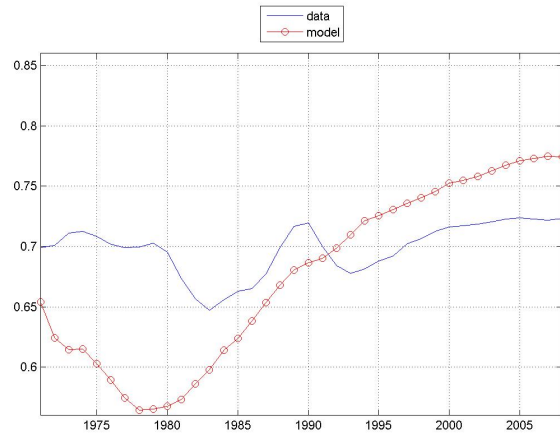


I/Y

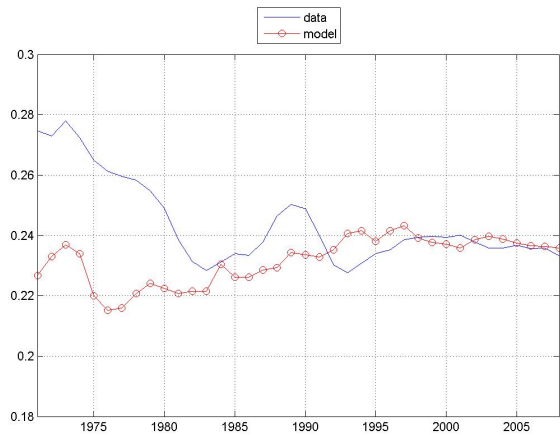
Figure 24: The UK economy



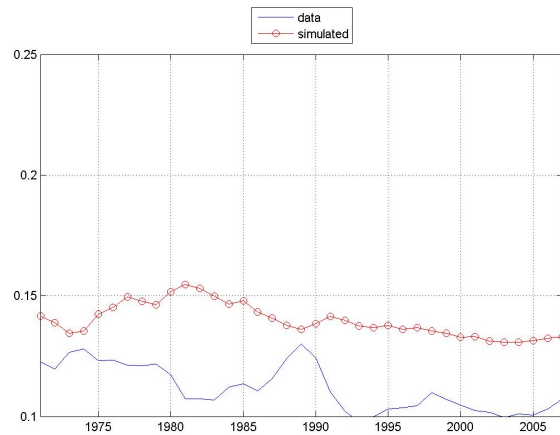
Hours per worker



Employment rate

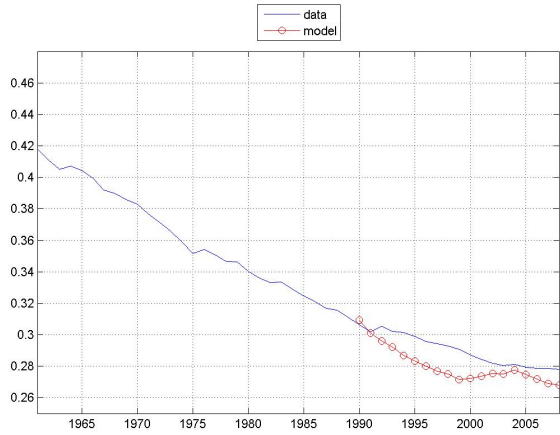


Total hours

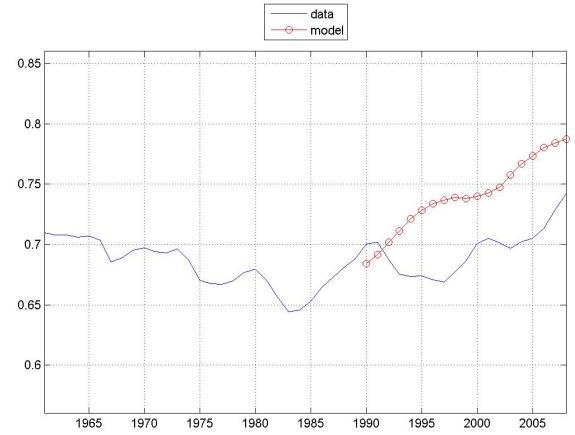


I/Y

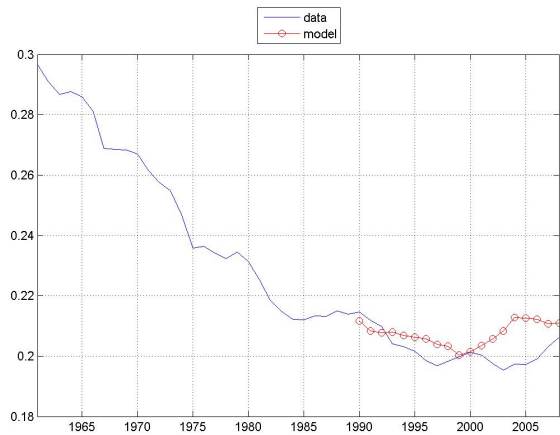
Figure 25: The German economy



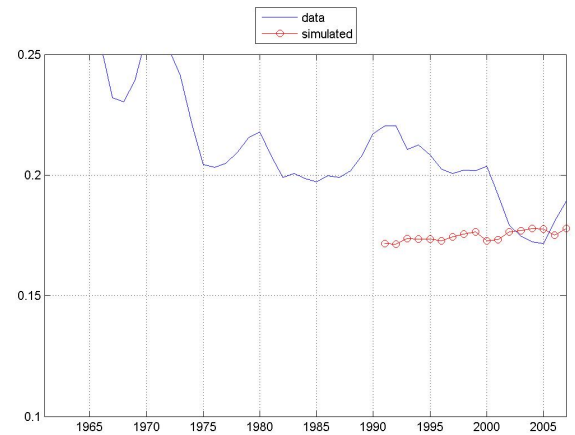
Hours per worker



Employment rate



Total hours



I/Y

G.2 The driving forces of the model

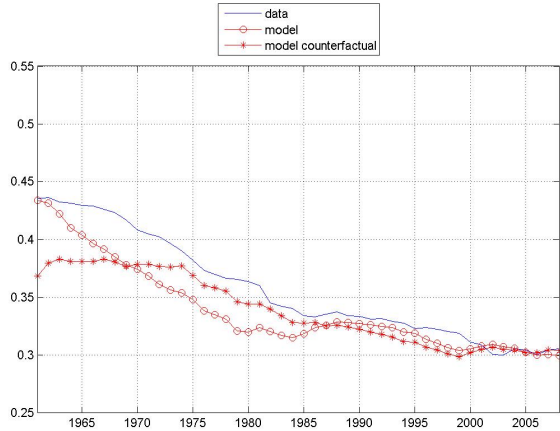
In this section we analyze the impact of the different driving forces of the model. In order to disentangle the effect of the evolution of the exogenous variables, we proceed as in McDaniel (2011) by "switching off" the effects caused by the different variables: we compare the outcome of the "full" benchmark model with that of

- (i) a model in which only taxes vary, but labor market institutions and TFP do not;
- (ii) a model in which taxes and technology vary, but labor market institutions do not.

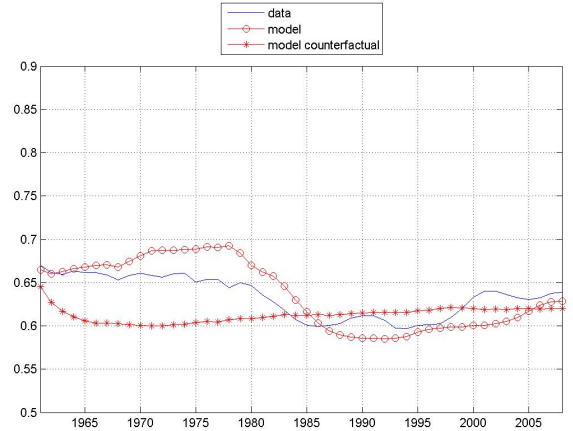
In particular we fix the level of the constant exogenous variables to that one they attain in 2010, so that all the versions of the model share the same final steady state.

If we look at the evolution of hours for France in the top left panel of Figure 26, we see clearly the explicative power of the tax wedge: hours remain flat till 1975 and then they start to decrease, reflecting the evolution of the tax wedge that we can see in Figure 4. On the other hand, the evolution of employment is not at all explained in this case. When we add the technological process, the bottom panels of Figure 26 show that we introduce a "wealth effect" coming from the fact that agents are richer at the end of the period, but also a different path, since agents know that their productivity increases till roughly the beginning of the 1980s: we have therefore two forces, the "wealth effect" and the "inter-temporal substitution effect" for households: there are incentive to work more at the beginning of the sample. Which margin is the better option? Given that the labor market institutions are at their more unfavorable levels for the firms during all the sample (their levels reached in 2010), the intensive margin supports less distortions: there is thus an over-adjustment of the intensive margin.

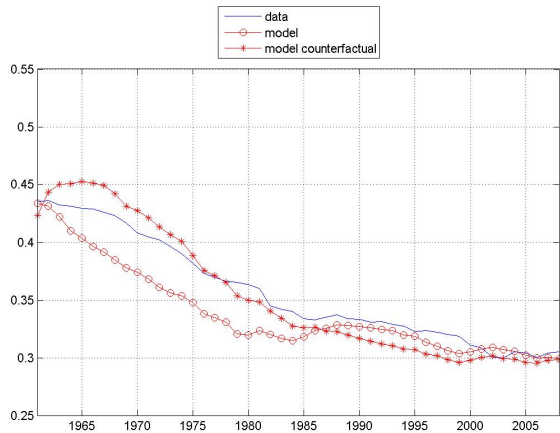
Figure 26: Disentangling the contribution of exogenous variables (France)



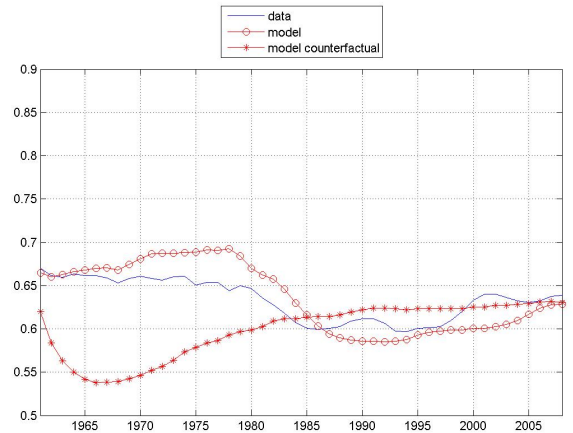
Hours if only taxes vary



Employment if only taxes vary



Hours if taxes and technology vary



Employment if taxes and technology vary