



**HAL**  
open science

# The Tragedy of Corruption Corruption as a social dilemma

Ye-Feng Chen, Shu-Guang Jiang, Marie Claire Villeval

► **To cite this version:**

Ye-Feng Chen, Shu-Guang Jiang, Marie Claire Villeval. The Tragedy of Corruption Corruption as a social dilemma. 2015. halshs-01236660v1

**HAL Id: halshs-01236660**

**<https://shs.hal.science/halshs-01236660v1>**

Preprint submitted on 2 Dec 2015 (v1), last revised 31 Aug 2016 (v2)

**HAL** is a multi-disciplinary open access archive for the deposit and dissemination of scientific research documents, whether they are published or not. The documents may come from teaching and research institutions in France or abroad, or from public or private research centers.

L'archive ouverte pluridisciplinaire **HAL**, est destinée au dépôt et à la diffusion de documents scientifiques de niveau recherche, publiés ou non, émanant des établissements d'enseignement et de recherche français ou étrangers, des laboratoires publics ou privés.

WP 1531 – December 2015

## The Tragedy of Corruption

### Corruption as a social dilemma

Ye-Feng Chen, Shu-Guang Jiang, Marie Claire Villeval

#### Abstract:

We investigate corruption as a social dilemma by means of a bribery game in which a risk of collective failure is introduced when the number of public officials accepting a bribe from firms reaches a certain threshold. We show that, despite the social risk, the pursuit of individual interest prevails and leads to the elimination of honest officials over time. Reducing the size of the groups while increasing the probability of collective failure diminishes the public officials' corruptibility but is not sufficient to eliminate the tragedy of corruption altogether.

#### Keywords:

Corruption, bribing, social dilemma, collective failure, coordination, experiment.

#### JEL codes:

C92, D73, H41

# The Tragedy of Corruption

## Corruption as a social dilemma

Ye-Feng Chen<sup>a</sup>, Shu-Guang Jiang<sup>b</sup>, Marie Claire Villeval<sup>c,d,e</sup>

*This version: December 1, 2015*

**Abstract:** We investigate corruption as a social dilemma by means of a bribery game in which a risk of collective failure is introduced when the number of public officials accepting a bribe from firms reaches a certain threshold. We show that, despite the social risk, the pursuit of individual interest prevails and leads to the elimination of honest officials over time. Reducing the size of the groups while increasing the probability of collective failure diminishes the public officials' corruptibility but is not sufficient to eliminate the tragedy of corruption altogether.

*Keywords:* Corruption, bribing, social dilemma, collective failure, coordination, experiment

*JEL Codes:* C92, D73, H41

<sup>a</sup> College of Economics, Zhejiang University, China.

<sup>b</sup> Centre for Economic Research, Shandong University, China. [sgjiang@szse.cn](mailto:sgjiang@szse.cn)

<sup>c</sup> Université de Lyon, F-69007, France; CNRS, GATE Lyon St Etienne, 93 Chemin des Mouilles, F-69130, Ecully, France. [villeval@gate.cnrs.fr](mailto:villeval@gate.cnrs.fr)

<sup>d</sup> IZA, Bonn, Germany

<sup>e</sup> Department of Public Finance, University of Innsbruck

\* This research has been supported by a grant of the French National Research Agency (ANR, FELIS grant, ANR-14-CE28-0010-01). It was performed within the framework of the LABEX CORTEX (ANR-11-LABX-0042) of Université de Lyon, within the program Investissements d'Avenir (ANR-11-IDEX-007) operated by Agence Nationale de la Recherche.

## 1. Introduction

Throughout history, corruption has played a decisive role in the rise and fall of states and organizations. A famous historical example is provided by the *Dynasty Periodic Law* in ancient China, which characterizes the replacement of ruling dynasties every few hundred years and which is widely believed to be related to excessive corruption (see for example, Wang, 2002).<sup>1</sup> Other famous examples of the failures of governments or countries due to widespread corruption in the bureaucratic system can be found in the decline of the Roman Empire (MacMullen, 1988), or, more recently, the *Color Revolution* in the former Soviet republics, as well as countries like Afghanistan, North Korea and Somalia, where rampant corruption contributes to economic paralysis. Evidence suggests that high levels of corruption can also cause the failure of political parties, companies, and organizations, harming all their members, including those who are not corrupt.<sup>2</sup>

The risk of collective failure caused by widespread corruption suggests that the latter could be regarded as a social dilemma. Indeed, while accepting a bribe may be rational for an individual public official, it may harm the group as a whole, because it distorts the functioning of markets and may trigger a risk of collective failure. This perspective gives a fundamental motivation for behavior -the overall interest of the group- that was almost ignored by previous studies on corruption (see surveys by Aidt, 2003, and Abbinck and Serra, 2012). It may also contribute to a better understanding of the links between corruption and growth (Mauro, 1995) since such collective failures hurt efficiency. The main aim of this paper is to propose an analysis of

---

<sup>1</sup> Between the moment when a new dynasty was established and the late period of the same dynasty, corruption usually spread widely. The dynasty with epidemic corruption was finally overthrown and replaced by a new dynasty.

<sup>2</sup> An example of the failure of political parties is given by the liberals of Canada, led by P. Martin who was asked to step down due to corruption scandals in 2005. The Enron Corporation and Volkswagen scandals are examples of organizational failure, due to corporate fraud and corruption by a small fraction of the employees. In the domain of sports, the recent denunciations of the Russian and Kenyan athletes for massive doping and corruption by the World Anti-Doping Agency commission might lead to these countries being banned from the 2016 Olympics.

corruption as a social dilemma, and test how a risk of collective failure affects individuals' corruptibility.

The novel perspective that we develop in this paper aims at complementing the traditional approach of corruption inspired by Becker and Stigler (1974) and Rose-Ackerman (1975) that relies on a cost-benefit analysis and on the agency theory. The principal–agent model of corruption rests notably on the assumption that the principal takes on the role of controlling corruption (Rauch and Evans, 2000). However, as argued by Persson *et al.* (2013), this model cannot capture all the fundamental aspects of corruption. In particular, the decision to accept a bribe does not depend solely on a cost-benefit analysis, and it does not dissolve in the vertical relationship between an agent and a principal. Approaching corruption as a social dilemma allows us to account for the horizontal interdependencies among corruptible individuals within a group. We believe that it can provide an explanation for the collective failures described above.

Our aim in this paper is to test whether the social-dilemma nature of corruption can explain the occurrence of coordination failures among the members of an interest group. For example, governments are a major institution in human societies, as they play a crucial role in the enforcement of the social contract (as shown by Hobbes, Locke or Rousseau). Running a government efficiently requires the cooperation of public officials who are loyal to their duties and enforce laws impartially. However, individual and collective interests are at odds when bribe offers introduce an incentive to free ride (*i.e.* to not contribute to safeguarding the reputation of the government), and lead public officials astray. Indeed, the Nash equilibrium in this situation predicts that to maximize his individual payoff, an official who has some discretion on public affairs will accept a bribe offer when its benefit exceeds its cost. If a high percentage of officials accept bribes, corruption distorts the operation of the government and destroys social justice. The damage to reputation from widespread corruption may cause a crisis of confidence in the

government, and even trigger the crash of the government in the most severe cases. Thus, the whole group of officials may fail when the number of corrupt officials exceeds a certain threshold.

In this paper, we investigate the social dilemma nature of corruption as a public bad in a stochastic environment, by designing a laboratory experiment based on the sequential bribery game of Abbink *et al.* (2002). Specifically, in a group, each firm is paired with a public official and they repeatedly interact with each other in a partner-matching relationship. The firm can offer a bribe to the public official for obtaining the permission to develop a project. The public official has to decide whether or not to accept the bribe, and, then, whether or not to grant permission to the firm. Granting permission increases the payoff of the firm, but harms every other firm, creating a negative externality. The originality of our design is that, in each period of the game, if the percentage of public officials who accept a bribe in the group exceeds a certain threshold, this triggers a risk of collective failure, which can be seen as a second negative externality. If a collective failure actually occurs, all the public officials lose most of their payoffs in the period. This endogenous collective failure mechanism replaces the exogenous “sudden death” mechanism in Abbink *et al.* (2002) that is defined as a very low probability event ( $p=0.003$ ) which lets a pair of corrupt players lose all their payoffs and be excluded from the game. Our mechanism turns the initial principal-agent game into a social dilemma game. It captures the tension of the public officials between pursuing their individual interest (accepting a bribe) and serving the collective interest of the group (resisting the temptation, so as to maintain the integrity of the group payoffs). This design allows us to study whether players are able to cooperate to avoid collective failures.

In this framework, we investigate the impact of two variables on the intensity of corruption in a group: the probability of a collective failure and the group size. Indeed, different natural or social environments can generate different probabilities of failure in case of widespread corruption. In real settings, these differences can result from various tolerance norms or from the implementation of more or less intense deterrence policies (for example, massive crackdown

operations on corruption increase the probability of collective failure). When the risk of collective failure is high, the members of a group must cooperate more effectively to avoid a possible catastrophe. In contrast, in a low risk environment individuals may be more likely to free ride and follow their selfish interests. The second variable of importance is the size of the groups. Indeed, as surveyed in Section 2, previous literature has shown that the group size impacts cooperation in public goods games, but no consensus has been found on the direction of its effect. In the context of corruption, when the group size is relatively small, we anticipate that a single official can feel a stronger sense of responsibility for the failure of his group, because of his higher probability to be the key player whose decision triggers the risk of such a collective failure. Moreover, it may be easier to coordinate with the other officials to avoid reaching the critical threshold. On the other hand, if a collective failure occurs in a small group, it will affect a lower number of officials than in a large group, and this may weaken the sense of individual responsibility. It is therefore interesting to investigate which effect is more dominant. We use a 2×2 factorial experimental design to test the impact of the risk of collective failure and of the group size on corruption. The probability of a collective failure is either 20% or 60%, and the size of a group is either 10 or 20 members.

Our main findings are as follows: overall, we observe a high level of corruption; the percentage of firms offering a bribe is 72%; the percentage of public officials accepting a bribe is 81%, and the social corruption rate is 41%. Both the group size and the probability of collective failure have significant effects on the social corruption level: the lowest social corruption level (31.22%) is observed in small groups under high risk of failure, while the highest level (47.11%) is found in large groups under low risk. There is, however, limited evidence of an influence of the group size and of the risk of collective failure on the firms' decision to offer a bribe. However, conditional on attempting to bribe, firms offer higher bribes in smaller groups when the risk of failure is high than in larger groups under low risk. Our treatment manipulations affect mainly the

public officials. The likelihoods of accepting a bribe and of the conditional permission granted to a firm both decrease when the risk of failure is higher, while the group size matters mainly under a high risk of failure. The officials' corruptibility (accepting a bribe) and their reciprocity (granting permission in exchange for the bribe) are the highest in large groups under low risk of failure, and the lowest in small groups under high risk of failure. Public officials' corruptibility also depends positively on their beliefs about others' behavior and their justification of corruption and risk preferences, while it depends negatively on their pro-social orientation.

Our experiment reveals that, despite the risk of collective failure, the dynamics of corruption leads to the progressive elimination of honest officials over time. This parallels the decay of cooperation in public goods games. Finally, our results provide evidence of the "tragedy of corruption" that harms both firms and public officials. Indeed, their mean actual payoffs are significantly lower than the payoffs received in the absence of corruption. This tragedy of corruption originates in the social dilemma nature of corruption. The lower mean payoff of firms results from the negative externalities generated by permissions granted by corrupt officials. The lower mean payoff of public officials originates in the negative externalities generated by the free-riding behavior of players and their inability to coordinate to avoid a collective failure. Therefore, our results offer a promising perspective on renewing the analysis of corruption and the design of policies fighting against bribery.

The remainder of this paper is organized as follows: Section 2 reviews briefly the literature; Section 3 describes the experimental design and procedures, and presents our behavioral conjectures; Section 4 reports our results and Section 5 discusses and concludes.

## **2. Related literature**

The traditional approach of corruption is grounded in the principal-agent model (Rose-Ackerman, 1999; Jain, 2001). In this framework, the government is the principal and the public official is the agent (Becker and Stigler, 1974; Van Rijckeghem and Weder, 2001). Experimental studies have



shown that the agents' willingness to accept bribes is affected, in particular, by the level of wages (Abbink, 2005; Armantier and Boly, 2011; van Veldhuizen, 2013), the monitoring capacity (Azfar and Nelson, 2007; Olken, 2007; Barr *et al.*, 2009; Serra, 2012), the risk of penalty (Abbink *et al.*, 2002), and staff rotation (Abbink, 2004), or information (Berninghaus *et al.*, 2013; di Falco *et al.*, 2015). Generally, it has been found that officials with higher wages, subject to rigorous monitoring and severe punishment when corruption is detected are less corrupt (see Abbink and Serra, 2012, for a review). Moreover, variations in the structure of governments and in the electoral systems contribute to explain the differences in corruption practices across countries (Shleifer and Vishny, 1993; Persson and Tabellini, 2004; Ferraz and Finan, 2011).<sup>3</sup> Our study differs in that instead of analyzing corruption as a principal-agent problem, we analyze it as a social dilemma problem, *i.e.*, we let the collective interests of public officials conflict with their individual interests.<sup>4</sup>

We investigate the impact of group size on corruption. Alesina and Angeletos (2005) have shown that bigger governments increase the gains from corruption because they control a larger share of the resources. Here, we investigate another reason for which the group size can affect the level of corruption: its impact on free-riding. The literature on social dilemmas has generally found that cooperation declines as the group size increases (see Sally, 1995, and Zelmer, 2003, for surveys and Olson, 1965; Hamburger *et al.*, 1975; Boyd and Richerson, 1988; Van Huyck *et al.*, 1990; Santos and Pacheco, 2011). However, Isaac and Walker (1988) and Isaac *et al.* (1994) have shown that contributions in public goods games may increase in large groups because the social benefit of contributing increases in the group size. More recently, Nosenzo *et al.* (2015) have found that cooperation increases with size when the marginal per capita return from the public goods is low, and vice-versa. Our contribution is to analyze the effect of group size on collective

---

<sup>3</sup> For empirical investigations on the determinants of corruption at the cross-country level, see Svensson (2005), Lambsdorff (2006), Serra (2006), Treisman (2007), Dimant (2013) for reviews.

<sup>4</sup> Abbink *et al.* (2002) include a public bad dimension in a treatment where granting permission leads to negative externalities on all players. However, accepting a bribe in itself does not harm the other players.

action in a public bad situation, while most previous studies considered the impact of size in VCM or common pool resource games.

We also investigate the impact of the probability of collective failure on corruption. The recent collective-risk social dilemma games (e.g. Milinski *et al.*, 2008; Santos and Pacheco, 2011; Tavoni *et al.*, 2011; Chen and Perc, 2014) capture situations in which agents need to coordinate to prevent an undesirable event. The risk of collective failure is usually introduced in threshold public goods: if agents' contributions do not reach the threshold, then a collective damage may occur (like in Dannenberg *et al.*, 2015). It is found that a higher risk of failure increases the chances of coordinating actions. As shown by Santos and Pacheco (2011), the combination of a smaller group size and a higher risk of failure increases the groups' capability to escape the tragedy of the "commons". Our experiment also uses a collective-risk social dilemma game, but it differs from previous studies by considering a threshold public bad. While in threshold public goods games subjects have to cooperate to reach the provision threshold, in our study they have to cooperate to avoid reaching the threshold that triggers a collective failure. Our game also differs from previous studies, notably those based on common pool resource games (Ostrom, 1990), in that it involves two parties (firms and public officials).<sup>5</sup>

### **3. Experimental design, predictions, and procedures**

We first present our experimental design, starting with a definition of the game used in the baseline condition before introducing the treatments. Secondly, we develop behavioral predictions. Finally, we detail the procedures.

---

<sup>5</sup> Note that although we do not elicit beliefs in each period but only indirectly at the end of the game, our study does not ignore the role of beliefs on group norms. The studies on cooperation give consistent evidence that whatever action ought to be taken depends on shared expectations about how others will act (Ostrom, 1998; Gintis *et al.*, 2005). Public goods experiments like Gächter and Herrmann (2009) and Fischbacher and Gächter (2010), have stressed that, for a majority of subjects, cooperation is conditional on the beliefs about others' contributions. For their part, studies on dishonesty have found that individuals' compliance behavior is influenced by the norm prevailing in the group (see Balafoutas, 2011, and Dong *et al.*, 2012, on the role of beliefs on corruption). Our originality is studying the net outcome of two opposite effects, as, on the one hand, beliefs of a high corruption level in the group may relax the norm of honesty but, on the other hand, they may increase the subjective risk of collective failure.

### 3.1. Experimental design

#### *The game*

Our game is based on the sequential bribery game developed by Abbink *et al.* (2002). It involves two types of players: firms who can offer a bribe to public officials in exchange for a favor, and public officials who can accept or reject the bribe and grant or deny the favor. We retain two essential characteristics of the initial game: the reciprocity relationship between bribers and officials, and the negative externality of bribery on other players. In contrast to Abbink *et al.* (2002), our game does not involve a centralized exogenous punishment mechanism but introduces instead a risk of collective failure for the public officials, as described below. This new design turns the initial principal-agent game into a social dilemma game. Let us describe this game.

A group consists of firms and public officials in equal number. Each firm is matched with a public official, and they interact repeatedly during 30 periods in a fixed partner matching protocol. In each period, the firm is willing to run a project that increases its profit but harms the other firms. The public official must decide whether or not to grant permission to the firm to run the project. Several firms can run their project if different public officials grant permission.

The game has three stages. In the first stage, the firm decides on whether or not to offer a bribe to the public official. If it offers a bribe, it has to decide on the amount of the bribe, from 1 to 9 points. Bribing the public official entails a fixed cost of 1 point (this fee could represent the time spent approaching the public official, for example). In the second stage, the public official who is offered a bribe has to decide to accept or reject it. If he rejects the bribe, the payoffs of both the firm and the public official remain unchanged, except that the fixed bribing cost is deducted from the firm's account. If the official accepts the bribe, then the amount offered is deducted from the firm's account, and the public official's account is increased by the tripled amount of the bribe.<sup>6</sup>

---

<sup>6</sup> Abbink *et al.* (2002) argue that this factor reflects a difference in marginal utility: in the real world, the same amount of money means less to the briber than to the public official.

In the third stage, the public official has to decide whether or not to grant permission to the firm to run its project. If he denies permission, both the firm and the official earn 36 points. If he grants permission, the firm earns 56 and the official earns 33. The cost for the public official to grant permission may represent, for example, his effort to justify his decision. Granting permission causes a negative externality on each of the other firms: each one suffers a 2 points loss each time a public official grants permission to a firm.<sup>7</sup>

However, in each period, if the percentage of corrupt officials (*i.e.* those who accepted a bribe, regardless of whether or not this led them to grant permission) in the group exceeds 60%, the whole group of officials faces a risk of collective failure. When a collective failure occurs, all the public officials lose 80% of their payoff in the period. A collective failure has no direct consequence on the firms. This captures the social dilemma nature of corruption: accepting a bribe increases the official's payoff, but meanwhile, it raises the social risk of failure.

Figure 1 illustrates the decision process. " $t$ " denotes the amount of the bribe proposed by a firm. In each terminal node, the first line represents the payoff of the firm, and the second line the public official's payoff when no failure occurs (with his payoff in case of a failure in parentheses). On the third line,  $(-2, \dots, -2)$  represents the negative consequence of granting permission on each of the other firms' payoff. Note that the figure is incomplete since it only displays the two-player moves, while the final payoffs also depend on the decisions of all other pairs in the group.

---

<sup>7</sup> Another difference between our game and Abbink *et al.* (2002) is that the negative externality generated by the permissions harms only the firms in our game, and not all the players. The reason is that we wanted to separate the negative impact of corruption on firms due to the permissions to run the project, from its negative impact on public officials due to the risk of collective failure.

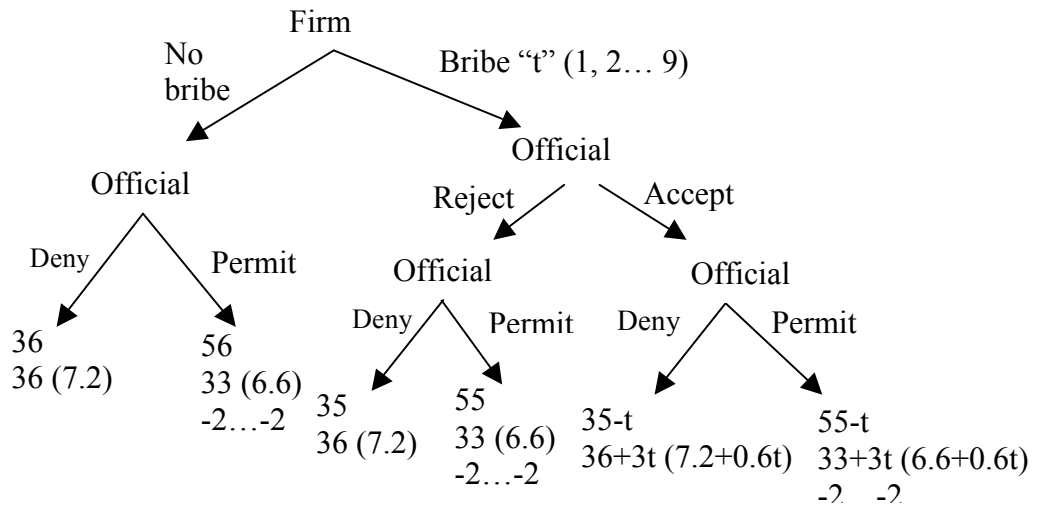


Figure 1. The bribery game

At the end of each period, each subject receives a feedback indicating the decision of his partner and his own payoff for the period. In addition, public officials (not firms) learn whether a collective failure occurred or not. No player is informed on the number of bribes offered and accepted. Firms (not officials) can indirectly learn the number of permissions granted in their group through their payoff reduction. Subjects are paid the sum of their payoffs in each period.

Since the bribery game involves a risk of collective failure, we elicited the subjects' risk preferences, using the Eckel and Grossman's (2002, 2008) procedure.<sup>8</sup> This elicitation took place at the beginning of each session, but no feedback was ever given to the subjects before the very end of the session. In case of a loss, the loss was deducted from the earnings from the main game.

### *Treatments*

A 2×2 factorial design involves four treatments that were implemented in a between-subject design. Treatments vary in the group size and in the probability of collective failure. The group size is either large (20 subjects) or small (10 subjects); the risk is either high (60%) or low (20%).

<sup>8</sup> Subjects were asked to choose which of six gambles to play. Each lottery offers a 50% probability of winning a higher payoff. The payoff of the six gambles are: (50, 50), (90, 30), (130, 10), (170, -10), (210, -30), (220, -40). The expected payoff increases from one lottery to the next, as well as its standard deviation. The last two lotteries have the same expected payoff but the last one is more risky.

In the Large group - Low risk treatment (LL, hereinafter), there are 20 participants in a group (10 firms and 10 public officials). When the percentage of public officials who accept a bribe exceeds the threshold of 60% (6 corrupt officials), there is a 20% probability that a collective failure occurs. In the Large group - High risk treatment (LH, hereinafter), the group size is also 20, but the probability of a collective failure is 60%. In the Small group - Low risk treatment (SL, hereinafter), there are 10 participants in a group (5 firms and 5 public officials). When the percentage of officials who accept a bribe exceeds the threshold of 60% (3 corrupt officials), a collective failure occurs with a 20% probability. In the Small group - High risk treatment (SH, hereinafter), the group size is also 10, but the probability of a collective failure is 60%.

### *3.2. Theoretical Predictions*

#### *Standard predictions*

In equilibrium, with standard preferences, firm do not offer bribes and officials do not grant permissions. Indeed, in a period, regardless of the firm's decision, the official will not grant permission since this would reduce his payoff (from 36 to 33). Therefore, in any finitely repeated situation, it cannot be an equilibrium strategy for the firm to bribe the public official. This prediction holds true, regardless of the group size and the probability of collective failure. The bribery relationship is not an enforceable contract. This leads to our first conjecture:

*Conjecture 1 (Standard preferences): Corruption is not an equilibrium strategy.*

#### *Behavioral predictions*

Alternatively, as argued notably by Abbink *et al.* (2002) and Abbink and Hennig-Schmidt (2006), the bribery relationship can occur if players have social preferences and express trust and reciprocity. Indeed, a trustful firm may try to bribe the public official. When a single official is not the key player who triggers the risk of collective failure in the group, his optimal choice is accepting the bribe. If reciprocal, he will grant permission to the firm. When an official is the key player, he is indifferent between accepting the bribe and granting permission, on the one hand, and

rejecting the bribe and denying permission, on the other hand, when the bribe amount ( $x$ ) and the probability of failure ( $p$ ) satisfy the following condition:

$$(33 + 3x)(1 - p) + 0.2(33 + 3x)p = 36$$

Thus, in the low-risk treatment ( $p=20\%$ ), the minimum acceptable bribe offer is 4 points, while in the high-risk treatment ( $p=60\%$ ), it is 13. Since bribes cannot exceed 9 by design, in the high-risk treatment, an official's best choice is never accepting a bribe if he is a key player.

Alternatively, taking the group as a whole indicates that public officials should never accept a bribe under high risk of collective failure, since the expected payoff is, at best, 31.2 (*i.e.*, when accepting the highest possible bribe of 9 and denying permission). Under low risk, the minimum acceptable bribe offer is 3, if they deny permission, and 4 if they grant it (since granting permission entails a cost of 3). Therefore, regardless of whether we take the perspective of the group of officials as a whole, or that of a single official who is the key player, a bribe lower than 3 should always be rejected in the low-risk treatment, and any bribe should be rejected in the high-risk treatment. However, this situation captures a social dilemma, since a single official who is not the key player is always tempted to accept a bribe because it increases his individual payoff. The conflict between collective and individual interests is all the more sharp, as a public official does not know whether or not he is the key player. Officials learn at the end of the period whether a collective failure occurred, and this helps them update their beliefs about the choices of others. But even after a collective failure occurs, a public official cannot know for sure whether or not he is the key player.

Firms can anticipate that public officials pursuing their self interest will accept a bribe, even when it is in the interest of the group to reject it. If trustful enough, they may therefore offer a bribe to the official in both risk treatments. The likelihood of a bribe is, however, lower when public officials face a higher risk of collective failure, and the amount of the bribe offered is higher to compensate for the higher risk. This likelihood may also depend on the feedback

received after each period. Indeed, although firms cannot know how many bribes were offered and accepted, and whether a collective failure occurred in a period, they can infer how many other firms were granted permission through their own payoff. In fact, a firm's payoff is decreased by 2 points for every other firm granted permission. This information gives a signal to the firm about the number of public officials acting reciprocally.

Based on the above analysis, we have the following conjectures that are alternative to

Conjecture 1:

**Conjecture 2 (Social preferences):** *For a given group size, firms offer more frequent but lower bribes in the low-risk treatments than in the high-risk treatments.*

**Conjecture 3 (Social preferences):** *For a given group size, public officials are more likely to accept bribes and grant permission in the low-risk treatments than in the high-risk treatments.*

With trust and reciprocity, the group size can also influence corruptibility. The threshold condition that triggers collective failure is the same (60%) for small and large groups, so the threshold number of corrupt officials is 3 in small groups and 6 in large groups. A public official does not know whether or not he is the key player who determines whether the threshold is reached. However, in a small group each public official has a higher chance of being the key player (1 in 5) than in a large group (1 in 10). Therefore, officials in a small group may feel more responsible for a collective failure than officials in a large group. This may be anticipated by firms.

This analysis leads to the following conjectures:

**Conjecture 4 (Social preferences):** *For a given risk, firms in a large group are more likely to offer a bribe, but the amount of the bribe is lower than in a smaller group.*

**Conjecture 5 (Social preferences):** *For a given risk, public officials in a large group feel less responsible for a collective failure than in a small group. They are more likely to accept a bribe and reciprocate by granting permission to the firm.*

In short, we predict the following rankings across treatments:

- $LL < LH$  and  $SL < SH$  for the mean bribe amount, conditional on firms offering a bribe;
- $LL > LH > SH$  and  $LL > SL > SH$  for the bribing rate, the officials' acceptance and permission rates, conditional on receiving a bribe offer, and for the overall corruption rate.



Of course, if public officials take into account the negative externalities of granting permission on the other firms, the difference of behavior between a small and a large group may be weakened. Indeed, in a larger group, their permission decision affects more firms and reduces efficiency to a larger extent.

### 3.3. Procedures

The experimental sessions were conducted in the computer lab of Zhejiang University in China, using the z-Tree software (Fischbacher 2007). We recruited 360 students (189 females and 171 males) from various disciplines via announcements on the bulletin board system. We conducted 18 sessions, with 20 participants in each session, including 6 sessions for each large group treatment and 3 sessions for each small group treatment. Thus, we get 6 independent observations for each treatment. Table 1 summarizes the features of the experimental sessions.

Table 1. Summary of experimental sessions

Treatment	# Sessions	Group size	Risk	# Subjects	# Groups	Females (%)
LL	6	20	20%	120	6	51.67
LH	6	20	60%	120	6	55.83
SL	3	10	20%	60	6	53.33
SH	3	10	60%	60	6	46.67
Total	18	-	-	360	24	52.50

Upon arrival, students were randomly assigned to a terminal. Instructions (see Appendix 1) were projected on a big screen, and subjects had to answer control questions (Appendix 2) after they had read the instructions. We did not proceed until all subjects had answered all questions correctly. Like in Abbink and Hennig-Schmidt (2006), instructions were contextualized but we avoided loaded terms like “bribe” (we used instead “private payment”). At the end of each session, we recorded individual demographic characteristics, and elicited the subjects’ beliefs towards trust and corruption. A few questions were taken from the World Value Survey (See Appendix 3).

Each session lasted about 90 minutes. On average, subjects earned 49.64 (Std. Dev. 7.24) Yuan (RMB) (about \$8.5), including a RMB5 show-up fee. Earnings were paid in cash by

someone who was not aware of the content of the experiment, and this was made common information in the instructions.

#### 4. Results

In this section, we first consider the firms' bribing behavior before focusing on the public officials' acceptance and permission decisions; finally, we analyze the evolution of behavior over time, and we conclude with the analysis of payoffs. Throughout the section, we refer to Table 2, which reports summary statistics including the mean decisions of firms and public officials by treatment, pairwise *t*-tests, and non-parametric tests comparing the four treatments. In the *t*-tests and Kruskal-Wallis equality-of-populations rank tests, the mean decision of a group of subjects across periods gives one independent observation. All tests are two-sided. Furthermore, in this section, we also report an econometric analysis of individual decisions.

Table 2. Summary statistics

Treatments	Means					Tests					
	LL	LH	SL	SH	Total	LL vs. LH	LL vs. SL	SL vs. SH	LH vs. SH	LL vs. SH	Total
Bribe rate (%)	75.33	70.83	70.67	68.22	71.87	0.179	0.324	0.590	0.397	0.022	0.199
Mean bribe (if bribe)	4.70	4.71	4.64	5.09	4.76	0.985	0.896	0.225	0.231	0.231	0.533
Acceptance rate if received an offer (%)	86.36	78.82	81.13	74.59	81.16	0.006	0.214	0.285	0.312	0.018	0.099
Permission rate if received an offer (%)	65.12	59.29	58.81	51.79	60.06	0.024	0.109	0.175	0.065	0.004	0.015
Social corruption level (%)	47.11	39.44	40.00	31.22	40.72	0.014	0.092	0.109	0.073	0.002	0.007
Nb of group decisions exceeding threshold (/180)	141	95	121	98	-	0.005	0.300	0.288	0.852	0.013	0.038
Nb of actual failures	32	64	29	59	-	<0.001	0.573	<0.001	0.355	<0.001	0.001

*Notes:* The social corruption level is defined as the percentage of public officials who accept a bribe and grant permission among all public officials. The left panel reports mean values and percentages. In the right panel, the pairwise treatment comparisons report *p*-values from *t*-tests. The last column indicates the *p*-value from Kruskal-Wallis equality-of-populations rank tests.

##### 4.1. Firms' bribing decisions

We introduce our first result:

**Result 1:** *a) A majority of firms offer bribes. b) There is limited evidence of an influence of the group size and of the risk of collective failure on the firms' decision to offer a bribe. c)*

*Conditional on attempting to bribe, firms offer higher bribes in smaller groups when the risk of failure is high (SH) than in larger groups under low risk (LL).*

*Support for Result 1.* Table 2 indicates that firms offer a bribe in 71.87% of the observations. This rejects Conjecture 1. The mean bribing percentage is the highest in the LL treatment (75.33%), and lowest in the SH treatment (68.22%), while the LH (70.83%) and the SL treatments (70.67%) lie in-between. As predicted, the treatment ranking is: LL>LH>SH and LL>SL>SH. The difference is significant between LL and SH ( $t$ -test:  $p=0.022$ ), but not in any other pairwise comparison ( $p>0.10$ ). The higher bribing percentage when the risk of failure is low is in line with Conjecture 2, and the higher percentage in large groups is in line with Conjecture 4, but it is the interaction between the size and the level of risk that influences firms' behavior significantly.

The mean amount of a bribe is 4.76 points. It is larger when the risk is higher, which is in line with Conjecture 2, but this is observed only in small groups (5.09 vs. 4.64, respectively) and not in large groups (4.71 vs. 4.70, respectively). Table 2 shows that no pairwise treatment comparison reaches significance. However, two-sample Kolmogorov-Smirnov tests indicate that the equality of distribution of the bribe amounts is rejected between LL and LH ( $p=0.002$ ), LL and SL ( $p=0.044$ ), SL and SH ( $p=0.037$ ), and between LH and SH ( $p=0.010$ ).

Next, we proceed to an econometric analysis to understand the determinants of the firms' bribing behavior. This behavior can be broken down into two decisions: firstly, the decision to offer a bribe or not, and secondly, conditional on choosing to bribe, the choice of the amount of the bribe. We therefore estimate a Heckman two-step model. In the first step, the selection equation that explains whether a firm offers a bribe or not is estimated by means of a random-effects Probit model (model (1)). In the second step, the conditional amount of the bribe is estimated by a GLS model (model (2)). The independent variables (defined in Table A1 in Appendix 4) include each treatment, with LL taken as the reference category, and a number of variables that control for gender (*male*), membership of the Chinese Communist Party (*CCP*), experience as a student leader (*leadership*), distrust of strangers (*Distrust*), belief in a high

corruption level in the country (*Belief\_country*), justification of corruption (*Justification*), willingness to donate to help a group in need (*Help*), and risk-seeking preferences (*Risk propensity*). We also include a time trend (*period*) and a variable capturing whether the public official granted permission in the previous period (*permit<sub>t-1</sub>*). The independent variables are the same as in model (2), except that *permit<sub>t-1</sub>* is excluded for identification, and the Inverse of the Mills Ratio obtained from the first equation is added to correct for a potential selection bias. In both models, robust standard errors are clustered at the group level. Table 3 reports marginal effects.

Table 3. Determinants of the bribe offer

Independent variables	Bribe offer (RE Probit) (1)	Bribe amount (GLS) (2)
<i>LL Treatment</i>	<i>Ref.</i>	<i>Ref.</i>
LH treatment	-0.004 (0.030)	0.039 (0.284)
SL treatment	0.005 (0.031)	0.082 (0.290)
SH treatment	-0.027 (0.032)	0.674** (0.290)
Male	-0.039*** (0.012)	0.633*** (0.070)
CCP member	-0.002 (0.013)	-0.181** (0.077)
Distrust	-0.031*** (0.007)	-0.179*** (0.040)
Leadership	-0.042*** (0.013)	0.353*** (0.071)
Belief_country	0.075*** (0.012)	0.404*** (0.072)
Justification	-0.007** (0.003)	0.038** (0.016)
Help	-0.017*** (0.003)	0.078*** (0.015)
Risk propensity	0.006 (0.004)	0.132*** (0.024)
Period	-0.004*** (0.001)	0.046*** (0.004)
Permit <sub>t-1</sub>	0.353*** (0.011)	-
IMR	-	-2.230*** (0.127)
Number of obs.	5220	3760
Number of groups	24	24
Log likelihood	-2498.543	-
R <sup>2</sup>	-	0.151
Wald Chi <sup>2</sup>	947.37	711.13
Prob > Chi <sup>2</sup>	<0.001	<0.001

*Note:* The Table reports average marginal effects from a Heckman two-step model. RE stands for random-effects and GLS for Generalized Least Squares. Robust standard errors (in parentheses) are clustered at group level. \*\*\*, \*\* and \* indicate significance at the 0.01, 0.05, and 0.1 level, respectively.

Controlling for individual characteristics, Table 3 indicates that the probability of offering a bribe does not differ significantly across treatments (model (1)), whereas the amount of the bribe, conditional on offering one, is significantly higher in SH than in LL (model (2)). Males, students with leadership experience, subjects who are more willing to help a group in need, and those who

find that corruption can be justified, are less likely to bribe; but, when they do, they tend to offer higher bribes. Confirming that trust plays an important role in bribery, subjects who report less trust in strangers are less likely to bribe, and they offer lower bribes. Members of the CCP also offer less when offering a bribe. In contrast, subjects who believe that their country is highly corrupted are more likely to offer a bribe and bribe more, suggesting that norms matter.

Preferences for risk do not affect the probability of bribing, but increase the amount offered.

Finally, being granted permission in the previous period encourages firms to bribe, showing the dynamics between trust and reciprocity within pairs. Firms are less and less likely to offer a bribe over time, but they tend to increase the amount proposed to influence the official. Overall, these results suggest that firms' behavior is more affected by individual characteristics than by the size of the group, or by the risk of the officials' collective failure. Since they bear no risk, most firms take a chance to bribe, regardless of the environment. We turn next to the analysis of the officials' behavior.

#### *4.2. Public official's corruptibility and social corruption in groups*

We predicted that public officials should have a lower propensity to accept a bribe and grant permission when the group size is smaller and when the probability of a collective failure is higher. In fact, our next result is the following:

**Result 2.** *a) Most public officials are corrupt. b) Their corruptibility, c) their trustworthiness, and d) the degree of social corruption in groups are higher in large groups under low risk of collective failure (LL), and lower in small groups under high risk of collective failure (SH).*

*Support for Result 2.* We measure the officials' corruptibility by the acceptance rate of a bribe. As shown by Table 2, a bribe is accepted in 81.16% of the observations. In line with Conjectures 3 and 5, the acceptance rate is the highest in LL (86.36%) and lowest in SH (74.59%), while LH (78.82%) and SL (81.13%) lie in-between. But the acceptance rate in the high-risk treatments is much higher than predicted, since a group of rational public officials as a whole should never accept any bribe under such high risk. Moreover, while we predicted that in low-risk treatments,

the lowest amount for accepting a bribe should be 3 if the public official plans to deny permission and 4 if he plans to grant it, the acceptance rates in LL and SL are 67.48% and 50.45%, respectively, when the amount of the bribe is less than 3 (out of 206 and 111 cases), and 75.97% and 63.28%, respectively, when the bribe is less than 4 (out of 387 and 177 cases). A Kruskal-Wallis test indicates that the acceptance rate differs across the four treatments ( $p=0.099$ ). T-test pairwise comparisons indicate significant differences between LL and SH ( $p=0.018$ ) and between LL and LH ( $p=0.006$ ). But the other pairwise comparisons do not reach a standard level of significance ( $p=0.214$  for LL vs. SL, 0.285 for SL vs. SH, and 0.312 for LH vs. SH).

Are public officials reciprocal? When officials accept a bribe, permission is granted in 69.81% of the observations. So, in more than two-thirds of the time, bribery is rewarded. The permission rates when accepting a bribe are 74.42%, 70.65%, 69.77%, and 61.35% in treatment LL, LH, SL, and SH, respectively. The total permission rate, irrespective of the bribery behavior of firms, is in line with Conjectures 3 and 5: it is the highest in LL (65.12%), and lowest in SH (51.79%), while LH (59.29%) and SL (58.81%) lie in-between. Kruskal-Wallis tests show significant differences in both the total permission rate ( $p=0.008$ ) and the permission rate if receiving a bribe offer ( $p=0.015$ ). T-test pairwise comparisons on permission rates if receiving a bribe offer indicate significant differences between LL and SH ( $p=0.004$ ), LL and LH ( $p=0.024$ ) and LH and SH ( $p=0.065$ ). But the other pairwise comparisons do not reach a standard level of significance ( $p=0.109$  for LL vs. SL, 0.175 for SL vs. SH).

Next, we measure social corruption by the percentage of officials in a group who accept a bribe and grant permission among all officials. Indeed, since many factors can influence corruption behavior during the process of the experiment (bribe frequency, bribe amount, collective failure, etc.), whether permission is granted reflects the final realization of corruption from a macro perspective. Moreover, only the permission harms other firms. The box plot in Figure 2 shows the median of social corruption and its dispersion across groups in the four

treatments. It reveals an important group size effect. As indicated in Table 2, average social corruption is highest in LL (47.11%) and lowest in SH (31.22%) ( $t$ -test:  $p=0.002$ ), while the rates in LH (39.44%) and SL (40%) lie in-between. The effect of group size on social corruption is significant for both the low and the high probabilities of collective failure ( $t$ -tests:  $p=0.092$  for LL vs. SL and  $p=0.073$  for LH vs. SH), showing the higher difficulty of cooperation in larger groups. The effect of the probability of collective failure is significant for the large groups, but not for the small ones ( $p=0.014$  for LL vs. LH and  $p=0.109$  for SL vs. SH).

Therefore, the rankings of mean percentages of acceptance, permission when receiving a bribe offer, and social corruption in the four treatments are, as predicted: LL>LH>SH and LL>SL>SH.

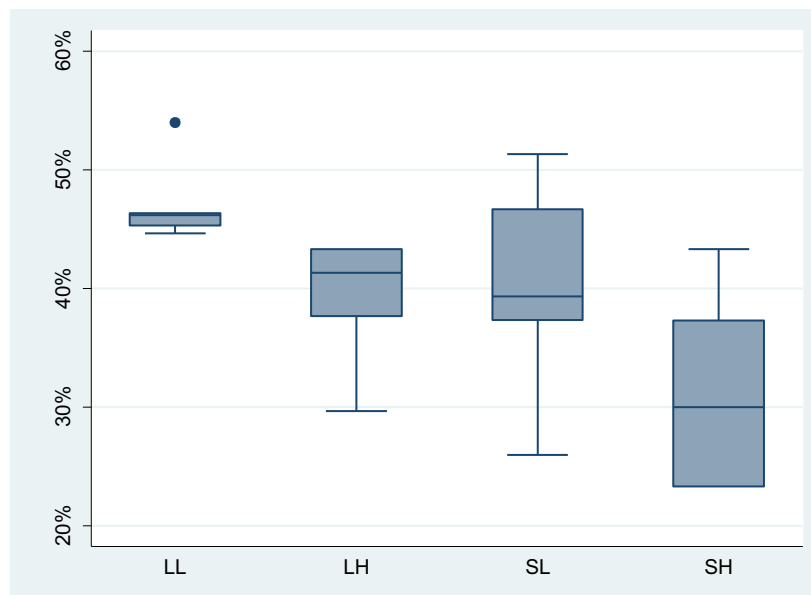


Figure 2. Box plot of social corruption percentages, by treatment

*Note:* The mean decision of a group of subjects across periods gives one independent observation. Horizontal lines indicate the median values. A dot indicates an outlier observation.

We consider next the evolution of corruption over time.

**Result 3.** *The dynamics of corruption eliminates the honest officials.*

*Support for Result 3.* Figure 3 displays the evolution over time of the mean number of corrupt officials in a group (*i.e.*, officials who accept a bribe and grant permission), out of 10 in large groups and 5 in small groups. It shows that social corruption increases over time in all treatments,

except in SH. This phenomenon illustrates what we call “the mechanism for the elimination of honest officials”: the social dilemma nature of corruption eliminates progressively the officials who behave honestly. The social corruption level in SH shows a more stable pattern, which supports our argument that the combination of a small group size and a high probability of collective failure is crucial to help a group to escape the tragedy of corruption. We also note a large end-game effect, as the trust-reciprocity relationship breaks down in the last periods of the game.

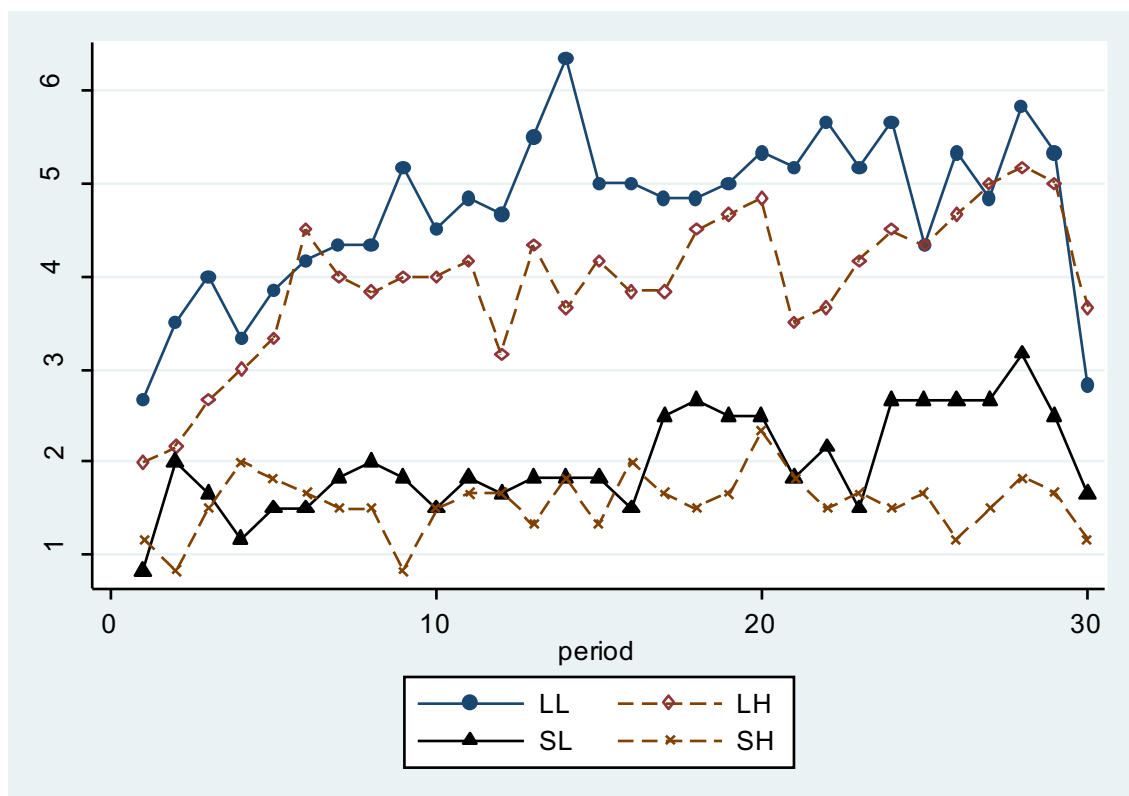


Figure 3. Evolution of the social corruption rate over time

We next provide additional support to Results 2 and 3 by means of an econometric analysis of the determinants of public officials’ behavior. Table 4 reports marginal effects from two sets of regressions. The first set analyzes both the decision to accept a bribe and the permission decision conditional on receiving that bribe. It includes both a Heckman two-step model to analyze the acceptance (model (1)) and permission decisions conditional on accepting a bribe (model (2)), and



a random-effects Probit model of the permission decision conditional on receiving a bribe offer (but not necessarily accepting it) (model (3)). In the first step of the Heckman model, a random-effects Probit model estimates the determinants of whether or not an official accepts a bribe offer; in the second step, a random-effects Logit model estimates whether the official grants the permission conditional on having accepted the bribe. The second set of regressions studies the unconditional permission decision, as public officials can also grant permission even if they do not receive a bribe offer or if they reject an offer.<sup>9</sup> These additional regressions allow us to control for the marginal effect of receiving a bribe (models (4) and (5)).

In all models, the independent variables include the amount of the bribe offered and its squared amount, to capture non linear effects, the difference between the amount of the bribe offered in the current period and its amount in the previous period to capture reference point effects, a variable for each treatment (with LL as the reference category), and a dummy indicating whether or not a collective failure occurred in the previous period. All models include the same control variables as in Table 3, except the distrust variable that should affect only bribers; we also replace the beliefs about corruption in the country with the beliefs about the corruption norm in the group, because our game involves a coordination issue for the officials. In the second stage of the Heckman model (2), we exclude the risk-seeking preference variable for identification, and we include the IMR extracted from the selection equation (1). In models (4) and (5), we add a dummy variable capturing the marginal effect of receiving a bribe of 1 point instead of 0. In model (5), we interact this binary variable with each treatment, and for that reason, we remove the treatment variables from the regression. The robust standard errors are clustered at the group level.

---

<sup>9</sup> In 10.35% of the observations, the public officials grant permission, although they did not receive a bribe offer. Since it is costly to the official, this could be considered as a form of altruism toward the paired firm, as it increases his payoff, or as an anti-social preference against out-group firms, as it decreases their payoff.

Table 4. Determinants of officials' acceptance and permission behavior

Independent variables	Conditional on receiving a bribe			Unconditional on receiving a bribe	
	Heckman two-stage model			Permission RE Probit	
	Acceptance RE Probit (1)	Permission RE Logit (2)	Permission RE Probit (3)	(4)	(5)
Bribe (dummy)	-	-	-	-0.108*** (0.031)	0.083** (0.035)
Bribe amount	0.117*** (0.011)	0.171*** (0.023)	0.200*** (0.013)	0.177*** (0.011)	0.178*** (0.011)
Squared bribe amount	-0.008*** (0.001)	-0.010*** (0.002)	-0.012*** (0.001)	-0.011*** (0.001)	-0.011*** (0.001)
<i>LL treatment</i>	<i>Ref</i>	<i>Ref.</i>	<i>Ref.</i>	<i>Ref.</i>	-
LH treatment	-0.083*** (0.032)	-0.022 (0.028)	-0.049* (0.026)	-0.052** (0.023)	-
SL treatment	-0.044 (0.031)	-0.030 (0.030)	-0.063** (0.030)	-0.053** (0.025)	-
SH treatment	-0.129*** (0.037)	-0.127*** (0.035)	-0.136*** (0.030)	-0.121*** (0.025)	-
<i>Bribe *LL</i>	-	-	-	-	<i>Ref.</i>
Bribe *LH	-	-	-	-	-0.015 (0.025)
Bribe *SL	-	-	-	-	-0.038 (0.027)
Bribe *SH	-	-	-	-	-0.093*** (0.028)
Diff_bribe	0.017*** (0.003)	-0.009*** (0.004)	-0.005 (0.003)	-0.005* (0.003)	-0.005* (0.003)
Failure <sub>t-1</sub>	0.029** (0.013)	-0.076*** (0.017)	-0.052*** (0.016)	-0.035*** (0.013)	-0.037*** (0.013)
Male	0.017 (0.014)	0.049*** (0.016)	0.071*** (0.016)	0.061*** (0.013)	0.063*** (0.013)
CCP member	0.040** (0.016)	-0.084*** (0.019)	-0.057*** (0.019)	-0.050*** (0.015)	-0.060*** (0.015)
Leadership	0.012 (0.013)	0.041** (0.017)	0.041** (0.016)	0.026*** (0.012)	0.027*** (0.012)
Risk propensity	0.015*** (0.005)	-	0.012** (0.005)	0.013*** (0.004)	0.012*** (0.004)
Belief_exp	0.029*** (0.010)	0.003 (0.012)	0.017 (0.012)	0.010 (0.009)	0.009 (0.009)
Justification	0.011*** (0.002)	0.007** (0.003)	0.009*** (0.003)	0.008*** (0.002)	0.008*** (0.002)
Help	-0.012*** (0.003)	-0.004 (0.003)	-0.012*** (0.003)	-0.008*** (0.003)	-0.008** (0.003)
Period	0.001** (0.001)	0.003*** (0.001)	0.003*** (0.001)	0.002** (0.001)	0.002*** (0.001)
IMR	-	-0.025 (0.068)	-	-	-
Number of obs.	3760	3067	3760	5220	5220
Number groups	24	24	24	24	24
Log likelihood	-1504.9	-1570.2	-2092.6	-2568.62	-2572.06
Wald Chi <sup>2</sup>	461.04	434.6	694.28	1618.01	1624.89
Prob > Chi <sup>2</sup>	<0.001	<0.001	<0.001	<0.001	<0.001

*Note:* The Table reports average marginal effects. RE stands for random-effects. In the interaction terms *bribe* \*LL, \*LH, \*SL, and \*SH, the *bribe* variable is a dummy variable. Robust standard errors (in parentheses) are clustered at group level. \*\*\*, \*\* and \* indicate significance at the 0.01, 0.05, and 0.1 level, respectively.

Consider first the treatment effects on the conditional decisions. Compared to LL, the effects of all the other treatments on both acceptance and conditional permission are negative. LH and SH significantly reduce the likelihood of accepting a bribe. SL is also negative, but not significant (except in model (3) when we do not control for acceptance). Consistent with Conjecture 3, a higher probability of collective failure reduces the propensity to accept a bribe (model (1)). Conditional on accepting the bribe, it is the interaction between the probability and the group size that affects the likelihood of granting permission (model (2)). Considering the conditional and the unconditional permission decisions in models (3) and (4), respectively, we find that the effects of the probability of failure and of the group size are of comparable magnitude.<sup>10</sup>

Table 4 also indicates that public officials are more likely to accept bribes and to grant permission when the amount of the bribe is higher, but the marginal effect of the latter is decreasing. A higher bribe in the current period, compared to that offered in the previous period, increases the willingness to accept it, but decreases the probability of granting permission, as if the official tried to raise the level of the bar over time. Interestingly, model (4) shows that it is better for a firm to offer no bribe than to offer a bribe of 1 point, since officials are more likely to deny permission when being offered such a small bribe.<sup>11</sup> Model (5) shows that this effect is driven by public officials in small groups, under a high probability of failure.

Supporting Result 3, about the elimination of honest officials over time, we find that the probabilities of accepting bribes and granting permissions increase significantly over time. The occurrence of a collective failure in the previous period does not stop officials from accepting a bribe. On the contrary, they try to recover their loss by increasing their corruptibility, and reducing

---

<sup>10</sup> Including in model (3) a variable indicating whether the official has accepted the bribe shows that acceptance significantly increases the probability to grant permission, which confirms the existence of reciprocity. It has a limited effect on the other variables, except that LH loses significance ( $p=0.357$ ).

<sup>11</sup> Unsurprisingly, withdrawing the amount of the bribe and its square from model (4) changes the sign of the bribe variable that becomes positive (available upon request).

their willingness to grant permission. This increase in corruptibility can also result from a revision of beliefs about the norm prevailing in the group, since only a failure can be (imperfectly) informative about the number of corrupt officials.

The probability of acceptance is increased by CCP membership, risk preferences, beliefs that corruption can be justified and that its level is high in this experiment, whereas it is decreased by higher social preferences as measured by the willingness to help others in the hypothetical final questionnaire. The (conditional and unconditional) probability of granting permission is increased for males and student leaders, and for those subjects who justify more corruption. It is reduced by CCP membership.

#### 4.3. Efficiency and the “tragedy of corruption”

We finally consider how efficiency, measured by the sum of net payoffs, is affected by corruption. Our last result follows.

**Result 4.** *Both firms and public officials are victims of the “tragedy of corruption”, as their mean payoffs are significantly lower than payoffs obtained in the absence of corruption.*

*Support for Result 4.* Table 5 displays the mean and standard deviation of the firms’ and public officials’ payoffs per period. It also indicates the percentage of firms and public officials making a loss relative to the payoff that can be obtained in the absence of corruption in the group (36).

Table 5. Payoffs of firms and public officials, by treatment

Treatment	Firms’ payoffs			Public Officials’ payoffs			Total payoffs		
	Mean	Std. Dev.	% loss	Mean	Std. Dev.	% loss	Mean	Std. Dev.	% loss
LL	33.17	4.63	65.00	37.43	3.98	38.33	35.30	4.80	51.65
LH	33.31	4.79	65.00	30.58	3.45	95.00	31.94	4.38	48.47
SL	37.78	4.49	36.67	37.50	4.54	50.00	37.64	4.48	43.35
SH	36.98	4.54	56.67	31.47	4.24	86.67	34.22	5.17	71.67
Total	34.62	5.01	58.89	34.16	5.13	67.22	34.39	5.07	63.06

Table 5 indicates that, because of its social dilemma nature, corruption lowers the payoffs of both firms and officials, as compared to the level of payoffs that would be obtained in the absence of corruption in the group. This loss of efficiency is what we call the “tragedy of corruption”. Indeed, the mean payoff of firms is only 34.62 while that of public officials is 34.16, which is

significantly different from 36 (Wilcoxon signed-rank tests:  $p=0.001$  for firms and  $p<0.001$  for officials).

58.89% of firms earn less than 36 because of the negative externalities imposed by the permission granted by public officials to other firms, and because their bribes are not always reciprocated. This percentage is naturally more important in large groups (65% in both LL and LH), compared to small groups (36.67% in SL and 56.67% in SH) ( $p<0.001$  for both LL vs. SL and LH vs. SH), since in large groups, each firm suffers from the negative externalities of a higher number of other firms that have been granted permission.

67.22% of the officials also earn less than 36, due to the occurrence of failures in some periods. This percentage is naturally much larger when the probability of a collective failure is higher, because officials do not adjust their behavior sufficiently (95% in LH and 86.67% in SH, compared to 38.33% in LL and 50% in SL) ( $p<0.001$  for both LL vs. LH and SL vs. SH).<sup>12</sup> Indeed, as a result of the high social corruption levels, the number of times the threshold of collective failure is reached is 141 in LL (78.33%), 95 in LH (52.78%), 121 in SL (67.22%), and 98 in SH (54.44%), out of 180 group decisions per treatment. The corresponding percentage of times a failure occurred is 17.78% in LL, 35.56% in LH, 16.11% in SL and 32.78% in SH.

The social dilemma nature of corruption is not only responsible for a loss of efficiency; it also contributes to increase the degree of inequality both among firms and among public officials, as the benefits of corruption are captured exclusively by those who offer bribes and those who accept them, while its costs are shared with the non-corrupt players. This generates another source of disutility.

---

<sup>12</sup> Note that the percentage of officials who earn less than 36 is higher in SL than in LL although the number of cases in which the threshold is reached is lower. This simply results from the actual outcomes of the random draws that have been more penalizing in SL than in LL.

## 5. Conclusion

We provide the first experimental evidence on corruption analyzed as a social dilemma problem in which the exchange of bribes for a favor can generate an endogenous risk of collective failure. Our results show that a “tragedy of corruption” occurs in many instances for two reasons: *i*) most public officials cannot resist the selfish temptation of accepting bribes and granting permission to the bribers to develop a project that entails negative consequences for the other firms, and *ii*) they are not able to coordinate with the other officials to avoid the risk of collective failure. The corruptibility of public officials and the trust-reciprocity relationship within pairs of subjects trigger the risk of collective failure. Although corrupt players are aware of the risk of failure, they pursue the selfish interest of their pair, instead of serving the interests of the whole group by refraining from accepting bribes and granting permissions. Honest officials and firms become the victims of corrupt players. Hence, corruption and conditional cooperation lead to the progressive elimination of these honest public officials over time. They also provoke the occurrence of collective failures, which entails a loss of efficiency in most groups. This is similar to the tragedy of the commons in environmental public goods. The social dilemma nature of corruption can, therefore, help explain the collapse of dynasties, governments or organizations. It may also contribute to explaining the role of corruption in the development of poverty and inequality, as observed in Gupta *et al.* (2002) and Alesina and Angeletos (2005).

Understanding the nature of corruption and its fundamental determinants is the basis for effective anti-corruption interventions. Several countries have been investing great efforts into reducing corruption by designing policies based on the view that corruption obeys a principal-agent logic, but few have been successful so far (see Persson *et al.*, 2013, for a discussion). Recognizing the social dilemma nature of corruption may suggest complementary policy instruments. For example, our experiment shows that smaller groups experience, on average, a lower level of corruption than larger groups. This effect of group size suggests that

when there is a risk of collective failure, organizing public officials into smaller units may be an interesting direction, since it seems to increase the feeling of responsibility. Our results also show that a higher probability of collective failure tends to lower corruption. Making public officials and potential bribers more aware of the risk of collective failure triggered by corruption is a possible avenue. Our experiment suggest that it may be necessary to combine these two dimensions to reduce the risk of falling into the trap of corruption. However, regardless of the group size and the probability of collective failure, the level of social corruption remains very high. This suggests a number of possible extensions. In particular, a possible direction for future research is reconsidering some measures that have been shown to sustain cooperation in public goods games, such as peer punishment or rewards, communication or the election of group leaders.

## References

- Abbink, K., Irlenbusch, B., Renner, E., 2002. "An Experimental Bribery Game", *Journal of Law, Economics, and Organization*, 18(2): 428-454.
- Abbink, K., 2004. "Staff rotation as an anti-corruption policy: an experimental study", *European Journal of Political Economy*, 20: 887-906.
- Abbink, K., 2005. "Fair Salaries and the Moral Costs of Corruption", In B. Kokinov (Ed.), *Advances in cognitive economics*. Sofia: NBU Press.
- Abbink, K., Hennig-Schmidt, H., 2006. "Neutral versus Loaded Instructions in a Bribery Experiment", *Experimental Economics*, 9(2): 103-121.
- Abbink, K., Serra, D. 2012. "Anticorruption Policies: Lessons from the Lab", *Research in Experimental Economics*, 15: 77-115.
- Aidt, Toke S. 2003. "Economic Analysis of Corruption: A Survey", *The Economic Journal*, 113 (491): F632-F652.
- Alesina, A., Angeletos, G. M. 2005. "Corruption, inequality and fairness", *Journal of Monetary Economics*, 52(7): 1227-1244.
- Armantier, O., Boly, A. 2011, "A Controlled Field Experiment on Corruption", *European Economic Review*, 55(8): 1072-1082.
- Azfar, O., Nelson, W. 2007. "Transparency, Wages, and the Separation of Powers: An Experimental Analysis of Corruption", *Public Choice*, 130: 471-493.

- Barr, A., Lindelow, M., Serneels, P. 2009. "Corruption in public service delivery: An experimental analysis", *Journal of Economic Behavior & Organization*, 72(1): 225–239.
- Balafoutas, L., 2011. "Public Beliefs and Corruption in a Repeated Psychological Game", *Journal of Economic Behavior & Organization*, 78(1): 51-59.
- Becker, Gary S., Stigler, G. J. 1974. "Law Enforcement, Malfeasance, and Compensation of Enforcers", *Journal of Legal Studies*, 3(1): 1–18.
- Berninghaus, S. K., Haller, S., Krüger, T., Neumann, T., Schosser, S., Vogt, B. 2013. "Risk Attitude, Beliefs, and Information in a Corruption Game—An Experimental Analysis", *Journal of Economic Psychology*, 34: 46-60.
- Boyd, R., Richerson, P. J. 1988, "The Evolution of Reciprocity in Sizable Groups", *Journal of Theoretical Biology*, 132: 337–356.
- Chen, X., Perc, M. 2014. "Excessive abundance of common resources deters social responsibility", *Scientific Reports*, 4: 4161.
- Dannenberg, A., Löschel, A., Paolacci, G., Reif, C., Tavoni, A., 2015. "On the Provision of Public Goods with Probabilistic and Ambiguous Thresholds", *Environmental and Resource Economics*, 61(3): 365-383.
- Dimant, E. 2013. "The Nature of Corruption: An Interdisciplinary Perspective", *Economics, Discussion Papers* No. 2013-59.  
<http://www.economics-ejournal.org/economics/discussionpapers/2013-59>
- Dong, B., Dulleck, U., Torgler, B. 2012. "Conditional Corruption", *Journal of Economic Psychology*, 33(3): 609-627.
- Eckel, C., Grossman, P. 2002. "Sex Differences and Statistical Stereotyping in Attitudes Toward Financial Risk", *Evolution and Human Behavior*, 23(4): 281-295.
- Eckel, C., Grossman, P. 2008. "Forecasting Risk Attitudes: An Experimental Study Using Actual and Forecast Gamble Choices", *Journal of Economic Behavior and Organization*, 68(1): 1–17.
- Di Falco, S., Magdalou, B., Masclet, D., Villeval, M.C., Willinger, M. 2015. "Can transparency of information reduce embezzlement? An experiment in Tanzania". Mimeo.
- Ferraz, C., Finan, F., 2011. "Electoral Accountability and Corruption: Evidence from the Audits of Local Governments", *The American Economic Review*, 101: 1274-1311.
- Fischbacher, U. 2007. "z-Tree: Zurich Toolbox for Ready-Made Economic Experiments", *Experimental Economics*, 10(2): 171-178.
- Fischbacher, U., Gächter, S. 2010, "Social Preferences, Beliefs, and The Dynamics of Free Riding in Public Good Experiments", *American Economic Review*, 100: 541–556.
- Gächter, S., Herrmann, B. 2009. "Reciprocity, Culture, and Human Cooperation: Previous Insights and A New Cross-cultural Experiment", *Philos. Trans. Roy. Soc. B – Biol. Sci*, 364: 791–806.
- Gintis, H., Bowles, S., Boyd, B., Fehr, E. (Eds.) 2005. *Moral Sentiments and Material Interests, The Foundations for Cooperation in Economic Life*, Cambridge, MA: MIT Press.
- Gupta, S., Davoodi, H., Alonso-Terme, R. 2002. "Does corruption affect income inequality and poverty?", *Economics of Governance*, 3: 23-45.
- Hamburger, H., Guyer, M., Fox, J. 1975. "Group size and cooperation", *Journal of Conflict Resolution*, 19: 503-31.



- Isaac, R. M., Walker, J. M., 1988. "Group size effects in public goods provision: The voluntary contributions mechanism", *The Quarterly Journal of Economics*, 103(1): 179-199.
- Isaac, R. M., Walker, J. M., Williams, A. W. 1994. "Group size and the voluntary provision of public goods: experimental evidence utilizing large groups", *Journal of Public Economics*, 54(1): 1-36.
- Jain, A. K., 2001. "Corruption: A Review", *Journal of Economic Surveys*, 15(1): 71-121.
- Lambsdorff, J. G., 2006. "Causes and Consequences of Corruption: What Do We Know from a Cross-Section of Countries?" in S. Rose-Ackerman (ed.), *International Handbook on the Economics of Corruption*, 3–51. Cheltenham, UK: Edward Elgar.
- MacMullen, R., 1988. *Corruption and the Decline of Rome*, Yale University Press.
- Mauro, P. 1995. "Corruption and Growth", *The Quarterly Journal of Economics*, 110(3): 681-712.
- Milinski, M., Sommerfeld, R. D., Krambeck, H. J., Reed, F. A., Marotzke, J., 2008. "The Collective-Risk Social Dilemma and the Prevention of Simulated Dangerous Climate Change", *Proceedings of the National Academy of Sciences*, 105(7): 2291-2294.
- Nosenzo, D., Quercia, S., Sefton, M. 2015. "Cooperation in Small Groups: The Effect of Group Size", *Experimental Economics*, 18(1): 4-14.
- Olken, B. A. 2007. "Monitoring Corruption: Evidence from a Field Experiment in Indonesia", *Journal of Political Economy*, 115(2): 200-249.
- Olson, M. 1965. *The logic of collective action: Public goods and the theory of groups*. Cambridge, MA: Harvard University Press.
- Ostrom, E. 1990. *Governing the Commons: The Evolution of Institutions for Collective Action*. Cambridge, UK: Cambridge University Press.
- Ostrom, E. 1998. "A Behavioral Approach to the Rational Choice Theory of Collective Action", *American Political Science Review*, 92 (1): 1-22.
- Persson, A., Rothstein, B., Teorell, J. 2013. "Why Anticorruption Reforms Fail—Systemic Corruption as a Collective Action Problem", *Governance*, 26(3): 449-471.
- Persson, T., Tabellini, G. 2004. "Constitutions and Economic Policy", *Journal of Economic Perspectives*, 18(1): 75-98.
- Rauch, J. E., Evans, P. B. 2000. "Bureaucratic Structure and Bureaucratic Performance in Less Developed Countries", *Journal of Public Economics*, 75(1): 49-71.
- Rose-Ackerman, S., 1975. "The Economics of Corruption", *Journal of Public Economics*, 4(2): 187-203.
- Rose-Ackerman, S., 1999. *Corruption and Government: Causes, Consequences, and Strategies for Reform*. Cambridge: Cambridge University Press.
- Sally, D. 1995. "Conversation and Cooperation in Social Dilemmas: A Meta-Analysis of Experiments from 1958 to 1992", *Rationality and Society*, 7(1): 58-92.
- Santos, F. C., Pacheco, J. M. 2011. "Risk of Collective Failure Provides an Escape from the Tragedy of the Commons", *Proceedings of the National Academy of Sciences*, 108(26): 10421-10425.
- Serra, D. 2006. "Empirical Determinants of Corruption: A Sensitivity Analysis", *Public Choice*, 126: 225-256.

- Serra, D., 2012. "Combining Top-Down and Bottom-Up Accountability: Evidence from a Bribery Experiment", *Journal of Law, Economics, and Organization*, 28(3), 569-587.
- Shleifer, A., Vishny, R. W. 1993. "Corruption", *The Quarterly Journal of Economics*, 108 (3): 599-617.
- Svensson, J. 2005. "Eight Questions about Corruption", *Journal of Economic Perspectives*, 19 (3): 19-42.
- Tavoni, A., Dannenberg, A., Kallis, G., Löschel, A., 2011. "Inequality, Communication, and the Avoidance of Disastrous Climate Change in a Public Goods Game", *Proceedings of the National Academy of Sciences*, 108(29): 11825-11829.
- Treisman, D. 2007. "What have we learned about the causes of corruption from ten years of cross-national research?", *Annual Review of Political Science*, 10: 211-244.
- Van Huyck, J. B., Battalio, R. C., Beil, R. O. 1990. "Tacit Coordination Games, Strategic Uncertainty, and Coordination Failure", *American Economic Review*, 80(1): 234-248.
- Van Rijckeghem, C., Weder, B. 2001. "Bureaucratic Corruption and the Rate of Temptation: How Much do Wages in the Civil Service Affect Corruption?", *Journal of Development Economics*, 65(2): 307-331.
- Van Veldhuizen, R. 2013. "The Influence of Wages on Public Officials' Corruptibility: A Laboratory Investigation", *Journal of Economic Psychology*, 39: 341-356.
- Wang, Z. 2002. The "Periodic Law" of Rise and Fall of Dynasties in Ancient China. *Theory Journal*, 1: 101-106.
- Zelmer, J. 2003. "Linear public goods experiments: A meta-analysis", *Experimental Economics*, 6(3): 299-310.

**Appendix 1. Instructions for the SL treatment (group size = 10, probability of failure = 20%)  
(The instructions for other treatments are similar except for the parts into brackets).  
Translated from Chinese.**

Welcome to this experiment on decision-making in economics. During this session, your earnings will depend on your decisions, on the decisions of other participants in this session and on random events. It is important that you read these instructions carefully.

The experiment consists of **two independent parts**. At the end of the experiment, you will be paid the sum of your earnings in the two parts.

During the experiment, your earnings are counted in points. Each of you is assigned an account at the beginning of the experiment which initial value is 0 point. During the experiment, if you make a gain, the amount will be added to your account; if you make a loss, the amount will be deducted from your account. At the end of the session, your earnings in points will be converted into RMB, according to the following conversion rate:

**100 points= RMB 5**

In addition, you will receive RMB 5 for showing up on time. Your earnings will be paid in cash at the end of the session, individually and confidentially, by someone who is not aware of the content of the experiment.

All your decisions are anonymous. You will never enter your name in the computer. **During the experiment you are not allowed to communicate with other participants, and the use of telephones is strictly forbidden.**

If you have any question, please raise your hand. One of us will come to you to answer your question in private.

**Part 1**

During this part, **you should select the gamble you would like to play among six different gambles**. The six different gambles are listed below.

- You must select **one and only one of these gambles**.
- To select a gamble, please click the corresponding box.
- Each gamble has two possible outcomes (**Event A or Event B**) **with a given chance of occurrence**. Your compensation for this part will be determined by:
  - the gamble you selected and
  - the event that occurs.

For example, if you select Gamble 4 and Event B occurs, you will lose 10 points. If Event A occurs, you will earn 170 points.

For every gamble, **each event has a 50% chance of occurring**. At the end of the session, the computer program will randomly determine which event will happen. The computer program will randomly draw a number from 1 to 10 to determine this event. If the number drawn is 1, 2, 3, 4 or 5, Event A will occur. If the number is a 6, 7, 8, 9 or 10, Event B will occur.

On your computer screen, you will have to click the box corresponding to your preferred gamble as indicated below:

Gamble	Event	Payoff	Chance	Your choice
1	A	50	50%	
	B	50	50%	
2	A	90	50%	
	B	30	50%	

3	A	130	50%	
	B	10	50%	
4	A	170	50%	
	B	-10	50%	
5	A	210	50%	
	B	-30	50%	
6	A	220	50%	
	B	-40	50%	

## Part 2

This part consists of **30 rounds**. In each round you will face the same decision situation. At the end of the experiment you will receive a payoff that is the sum of your earnings in each round.

In this part, you are in an interactive decision situation between **a firm and a public official**. The firm wishes to run a project which causes negative consequences to other firms. In each round, the public official must decide whether or not to grant the permission to the firm to run this project. Prior to this, the firm can offer a private payment to the public official, who can accept or reject the offer.

**All the participants are randomly divided into two independent groups of 10 participants. Therefore, you are in a group of 10 participants. [LL and LH: All the participants are in a group of 20 participants.]**

There are two types of participants: **firms** and **public officials**. There are **5 firms and 5 public officials in each group. [There are 10 firms and 10 public officials in the group.]** At the beginning of the experiment, the type of each participant is randomly drawn. **The type remains unchanged throughout the experiment.** In the first round, pairs of participants are matched randomly. One firm and one public official are matched to one another. Participants do not know whom they interact with. **The pairs also remain unchanged throughout the experiment. You will always interact with the same person but you will not know his identity.**

**In each round, three stage decisions will be made. The process in each round is the following.**

### *Stage 1:*

**First, the firm decides whether or not to offer a private payment to the public official.** If the firm decides not to offer a private payment, he must enter “0” in the blank box on the computer screen. In this case both the firm and the public official’s accounts remain unchanged.

If the firm offers a private payment, he can choose an amount between **1, 2, 3, 4, 5, 6, 7, 8 or 9 points**. In this case, the account of the firm **is reduced by a transfer fee of 1 point** regardless of whether the offer is accepted by the public official or not.

### *Stage 2:*

If the firm has offered a private payment, the public official decides on whether he **accepts** or **rejects** the offered private payment.

- If the public official **accepts** the private payment, then the account of the firm is reduced by the amount proposed. The public official’s account is **increased by the triple of the amount** that is paid by the firm.
- If the public official **rejects** the private payment, then the accounts remain unchanged except that the transfer fee of 1 point from stage 1 has still to be paid by the firm.

### *Stage 3:*

Regardless of whether he has received or not a private payment, the public official has to choose whether or not to **grant the permission to the firm**.

- If the public official **does not grant the permission**, then **his account and the account of the firm matched with him are increased by 36 points each**. The accounts of the other participants in the group are not changed by this decision.
- **If the public official grants the permission**, then the firm's account is increased by **56 points**, whereas the public official's account is increased by **33 points**. The account of each of the other firms in the group is decreased by **2 points**.

After stage 3, the round ends and a new round starts automatically.

**However**, in every round, a **collective failure** may occur. When a collective failure occurs, **all the public officials in the group lose 80% of their earnings in the round** (including the payoff from the project and the transfer from the firms). The earnings of the firms are not affected by a collective failure.

Whether the collective failure happens or not depends on the **number of officials** who have accepted a private payment during the round and on a **random event**.

In the group, if there are **less than 3** officials who accepted a private payment from a firm, a collective failure cannot happen. If there are **3 or more** officials who accepted a private payment from a firm, then a collective failure happens with **2 chances out of 10**. In this case, the computer program randomly determines whether the collective failure occurs or not.

[*SH*: In the group, if there are **less than 3** officials who accepted a private payment from a firm, a collective failure cannot happen. If there are **3 or more** officials who accepted a private payment from a firm, then a collective failure happens with **6 chances out of 10**. In this case, the computer program randomly determines whether the collective failure happens or not.]

[*LL*: In the group, if there are **less than 6** officials who accepted a private payment from a firm, a collective failure cannot happen. If there are **6 or more** officials who accepted a private payment from a firm, then a collective failure occurs with **2 chances out of 10**. In this case, the computer program randomly determines whether the collective failure happens or not.]

[*LH*: In the group, if there are **less than 6** officials who accepted a private payment from a firm, a collective failure cannot happen. If there are **6 or more** officials who accepted a private payment from a firm, then a collective failure occurs with **6 chances out of 10**. In this case, the computer program randomly determines whether the collective failure happens or not.]

At the end of the round, the officials are informed on whether a collective failure occurred or not.

The firm's decision interface on the computer screen is similar to the following screenshot:

**You are a firm in this game!**

Your corresponding public official will decide whether to grant the permission to you for running a project or not.

If the permission is granted, your account will be increased by **56** points, and the public official's account will be increased by **33** points; while if the permission is banned, both your account and the account of the public official will be increased by **36** points.

Running the project will cause all the other firms in the group lose **2** points.

You should decide whether to offer a private payment to the corresponding official or not. If you offer a private payment, you can transfer a number from **1** to **9** points.

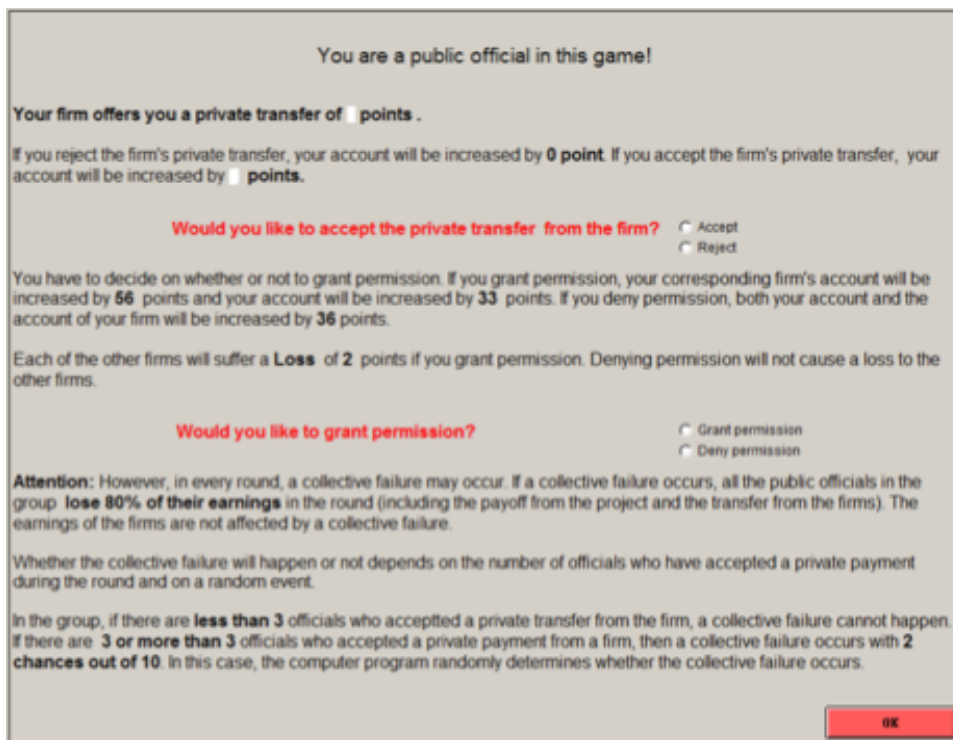
When you decide to offer a transfer, you will pay a transfer cost of **1 point** regardless of whether the public official accepts it or not.

If the public official accepts your offer, your account will be decreased by the amount you transferred, and the public official's account will be increased by the **tripled amount** that is paid from you.

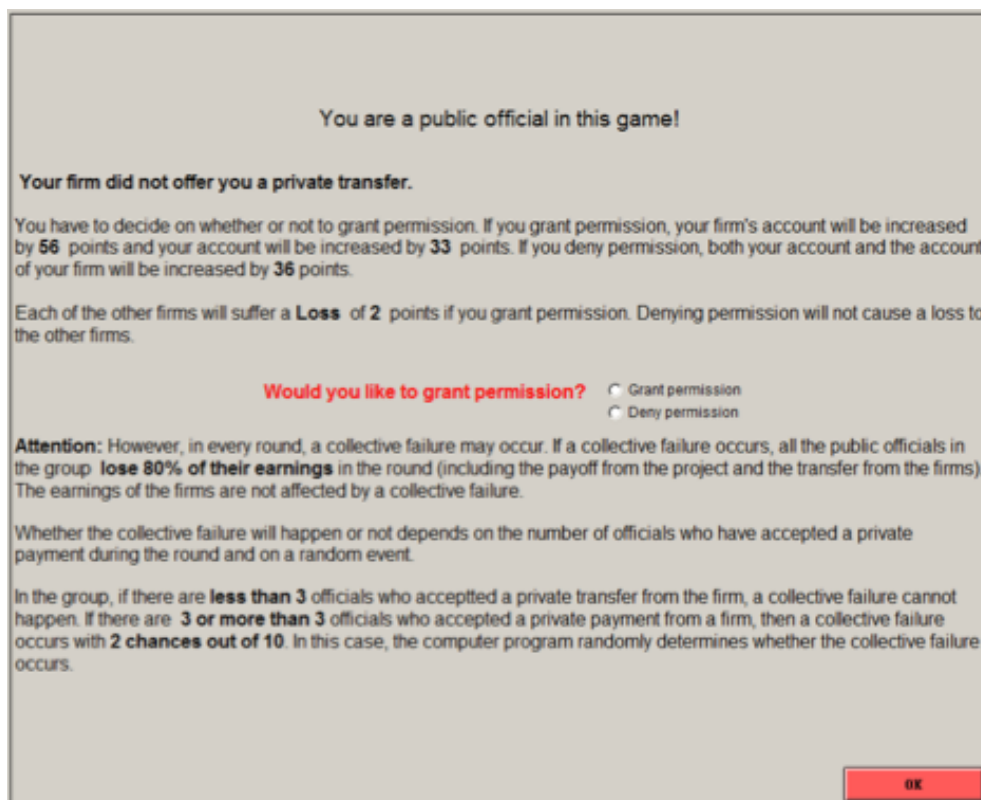
If you decide not to offer a private payment, please enter **0** in the blank.

Your private transfer to the public official is (enter **0** if you make no offer):

The public official's decision on the computer screen is similar to the following screenshot when the firm has offered a private transfer:



The public official's decision interface on the computer screen is similar to the following screenshot when the firm has not offered a private transfer:



You can find the different possible payoffs in each round for a **paired firm and public official** in the following **payoff tables**.

Table A. Payoffs if the firm does **not** offer a private transfer

Decision of the public official	Permission granted	
	<i>No</i>	<i>Yes</i>
Payoff of the firm	36	56
Payoff of the public official	36	33
Payoff of the public official if a collective failure occurs	7.2	6.6
Loss of each other firms	0	-2

Table B. Payoffs if the public official **rejects** a private transfer

Decision of the public official	Permission granted	
	<i>No</i>	<i>Yes</i>
Payoff of the firm	35	55
Payoff of the public official	36	33
Payoff of the public official if a collective failure occurs	7.2	6.6
Loss of each other firms	0	-2

Table C. Payoffs if the public official **accepts** a private transfer and permission is granted

Private payment	1	2	3	4	5	6	7	8	9
Payoff of the firm (56-Private payment-1)	54	53	52	51	50	49	48	47	46
Loss of each other firms	-2	-2	-2	-2	-2	-2	-2	-2	-2
Payoff of the public official (33+3×Private payment)	36	39	42	45	48	51	54	57	60
Payoff of the public official if collective failure occurs	7.2	7.8	8.4	9	9.6	10.2	10.8	11.4	12

Table D. Payoffs if the public official **accepts** a private transfer and permission is not granted

Private payment	1	2	3	4	5	6	7	8	9
Payoff of the firm (36-Private payment-1)	34	33	32	31	30	29	28	27	26
Loss of each other firms	0	0	0	0	0	0	0	0	0
Payoff of the public official (36+3×Private payment)	39	42	45	48	51	54	57	60	63
Payoff of the public official if collective failure occurs	7.8	8.4	9	9.6	10.2	10.8	11.4	12	12.6

### Summary

- You interact with the same persons throughout the experiment.
- The firm decides on whether or not to offer a private transfer to the public official and if so, he chooses the amount of the private transfer.
- If the firm has offered a private transfer, the public official decides to accept or reject this offer.
- The public official decides to grant or not the permission to run the project.

- A collective failure may occur that affects all the public officials, depending on the number of public officials accepting a private payment and on a random event.

### **Part 3 and end of the session**

In this part we thank you for answering several questions about you and your opinions. All your answers are anonymous and will be kept confidential. We appreciate if you answer all these questions sincerely.

At the end of part 3, the computer program will calculate and display your total earnings from part 1 and part 2.

---



## Appendix 2. Understanding questionnaire for all treatments

Before we start the experiment, you have to answer several questions about the experiment. You will not be allowed to start the experiment until you answer them correctly. You can ask us for help but you are not allowed to copy the answers of others.

1. Suppose you are a public official in the game. Your paired firm did not offer you a private transfer. You banned the permission. At the same time, all the other public officials accepted a private transfer and they all granted the permission.

(1) What is the chance of collective failure in this situation? (Please enter 0 if a collective failure will not happen for sure, or choose a number from 1 to 10, indicating the number of chances out of 10)

(2) If a collective failure does not happen in this round, what is your payoff in this round?

(3) If a collective failure happens in this round, what is your payoff in this round?

2. Suppose you are a public official in the game. Your paired firm offered you a private transfer of 3 points. You accepted the transfer and banned the permission. At the same time, there are five other public officials in the group who accepted a private transfer and granted the permission. The remaining firms did not provide a private transfer and their paired public officials all banned the permission.

(1) What is the chance of collective failure in this situation? (Please enter 0 if a collective failure will not happen for sure, or choose a number from 1 to 10, indicating the number of chances out of 10)

(2) If a collective failure does not happen in this round, what is your payoff in this round?

(3) If a collective failure happens in this round, what is your payoff in this round?

3. Suppose you are a public official in the game. Your paired firm offered you a private transfer of 6 points. You accepted the transfer and granted the permission. At the same time, all the other public officials in the group rejected the private transfer from their paired firms and banned the permission.

(1) What is the chance of collective failure in this situation? (Please enter 0 if a collective failure will not happen for sure, or choose a number from 1 to 10, indicating the number of chances out of 10)

(2) What is your payoff in this round?

4. Suppose you are a public official in the game. Your paired firm offered you a private transfer of 9 points. You accepted the transfer and granted the permission. At the same time, all the other public officials in the group accepted a private transfer from their paired firms and granted the permission.

(1) What is the chance of collective failure in this situation? (Please enter 0 if a collective failure will not happen for sure, or choose a number from 1 to 10, indicating the number of chances out of 10)

(2) If a collective failure does not happen in this round, what is your payoff in this round?

(3) If a collective failure happens in this round, what is your payoff in this round?

5. Suppose you are a firm in the game. You offered a private transfer of 5 points to your paired public official. The official accepted your transfer and granted the permission. At the same time, three other officials in the group accepted a private transfer from their paired firms and granted the permission. The remaining public officials in the group did not receive a private transfer and they all banned the permission.

What is your payoff in this round?

6. Suppose you are a firm in the game. You did not offer a private transfer to your paired public official. The official banned the permission. At the same time, five other public officials in the group accepted a

private transfer from their paired firms and granted the permission. The remaining public officials in the group rejected a private transfer and banned the permission.

What is your payoff in this round?

7. Suppose you are a firm in the game. You offered a private transfer of 8 points to your paired public official. The official accepted the transfer and banned the permission. At the same time, none of the other firms in the group offered a private transfer to the paired public officials. All the other public officials granted the permission.

What is your payoff in this round?

8. Suppose you are a firm in the game. You offered a private transfer of 2 points to your paired public official. The official accepted the transfer and granted the permission. At the same time, five other public officials in the group accepted a private transfer and three of them granted the permission while the two others banned the permission. All the remaining public officials either did not receive a private transfer or rejected a private transfer and they all banned the permission.

What is your payoff in this round?

### Appendix 3. Post experimental questionnaire

1. What is your age? \_\_\_\_\_ years
2. What is your gender? 1. Female 2. Male
3. What education level did you achieve?
  1. First year in College
  2. Second year in College
  3. Third year in College
  4. Fourth year in College
  5. Master degree
  6. Doctoral degree
4. Your study discipline:
  1. Business, Economics or Management
  2. Engineering, Computer sciences
  3. Math, Physics, Chemistry
  4. Medicine
  5. Others
5. Are you a member of the Chinese Communist Party? 1. Yes 2. NO
6. Did you ever participate in an experiment in economics before this one? 1. Yes 2. NO
7. Have you been a student cadre for a relatively long time? 1. Yes 2. NO
8. Suppose you face the following choice in reality, which one you would like to choose?
  1. 0.1% chance of getting 100 thousand Yuan or getting 0 Yuan
  2. 1% chance of getting 10 thousand Yuan or getting 0 Yuan
  3. 10% chance of getting 1000 Yuan or getting 0 Yuan
  4. 25% chance of getting 400 Yuan or getting 0 Yuan
  5. 50% chance of getting 200 Yuan or getting 0 Yuan
  6. 75% chance of getting 133 Yuan or getting 0 Yuan
  7. 100% chance of getting 100 Yuan
9. Could you tell how much you trust people you meet for the first time, in general?
  1. Trust completely
  2. Trust a little
  3. Neither trust or distrust
  4. Not trust very much
  5. Not trust at all
10. How much do you agree with the following statement: "I am trustworthy"?
  1. Disagree strongly
  2. Disagree somewhat
  3. Disagree slightly
  4. Agree slightly
  5. Agree somewhat
  6. Agree strongly
11. How much do you agree with the statement that you are good at finding whether a person is trustworthy?
  1. Disagree strongly
  2. Disagree somewhat
  3. Disagree slightly

4. Agree slightly
5. Agree somewhat
6. Agree strongly

12. How much do you agree with the following statement: "Generally, most people can be trusted"?

1. Disagree strongly
2. Disagree somewhat
3. Disagree slightly
4. Agree slightly
5. Agree somewhat
6. Agree strongly

14. How many public officials do you think accepted private transfers in the experiment on average?

1. All the officials
2. Most of the officials
3. About half of the officials
4. A small fraction of officials
5. No official

15. How widespread do you think bribing and corruption are in this country?

1. Almost all public officials are engaged in it
2. Most of them
3. About half of them
4. A small fraction of them
5. Almost no public officials are engaged in it

16. Please tell for the following statement whether you think it can always be justified, never be justified, or something in between, using a scale from 1 to 10:

"Someone accepting a bribe in the course of his duties".

1. Never justifiable
2. 2
3. 3
4. 4
5. 5
6. 6
7. 7
8. 8
9. 9
10. Always justifiable

17. Can you tolerate corruption? Please answer this question on a scale from 1 to 10, where 10 means that you totally tolerate corruption and it is acceptable to you and 1 means that you never tolerate it.

1. I never tolerate corruption
2. 2
3. 3
4. 4
5. 5
6. 6
7. 7
8. 8
9. 9
10. I can fully tolerate corruption

18. Do you agree with the following statement? “Most people in this world cannot restrain themselves from the temptation of money. They sometimes may even do something against social morality for the sake of money.”

- 1= Disagree strongly
2. Disagree somewhat
3. Disagree slightly
4. Agree slightly
5. Agree somewhat
6. Agree strongly

19. Suppose you are in a community of 100 members. The community is in a hank and face the risk of breakup, which will cause every member lose 200 Yuan. Now you have 1000 Yuan. What is the maximum number you would like to donate to the community for going through difficulties?

1. 0
2. 100
3. 200
4. 300
5. 400
6. 500
7. 600
8. 700
9. 800
10. 900
11. 1000

20. When you learn that doing a thing can have a negative consequence on others but can benefit you, would you still do it?            1. Yes            2. No

21. Are there other things that you would like to say about this experiment? \_\_\_\_\_

Appendix 4. Independent variables: definition and descriptive statistics

Table A1. Independent variables and descriptive statistics

Variables	Definition	Mean	Std. Dev.
Male	Male=1, female=0	0.48	0.50
CCP member	Member of the Chinese Communist Party, yes=1, no=0	0.26	0.44
Leadership	Participants with long student leadership experience, yes=1, no=0	0.52	0.50
Distrust	Question 9: Scale 1-5 with decreased trust on strangers	2.87	0.88
Belief_country	Question 15: Belief on the corruption level in the country, transformed into dummy, high corruption belief=1, if response is 1 or 2, 0 otherwise	0.58	0.50
Belief_exp	Question 14: Belief on the corruption level in the experiment, transformed into dummy, high corruption belief=1 if response is 1 or 2, 0 otherwise	3.59	0.76
Justification	Question 16: scale 1-10 with increased judgment on the justifiability of corrupt behavior	6.73	2.38
Help	Question 19: scale 0-10 with increased willingness to donate to a group to avoid losses for each member	3.84	2.40
Risk propensity	Lottery chosen in Part 1: 1-6 with increased risk preference (1-4 risk aversion, 5 risk neutral, 6 risk seeking)	4.12	1.50
Failure <sub><i>t-1</i></sub>	Dummy for whether a collective failure occurred in the previous period, yes=1, no=0	0.26	0.44
Diff_bribe	Amount of the bribe in the current period minus the amount of the bribe offered in the previous period	0.03	2.53
Permit <sub><i>t-1</i></sub>	Dummy for whether permission was granted in the previous period, yes=1, no=0	0.46	0.50