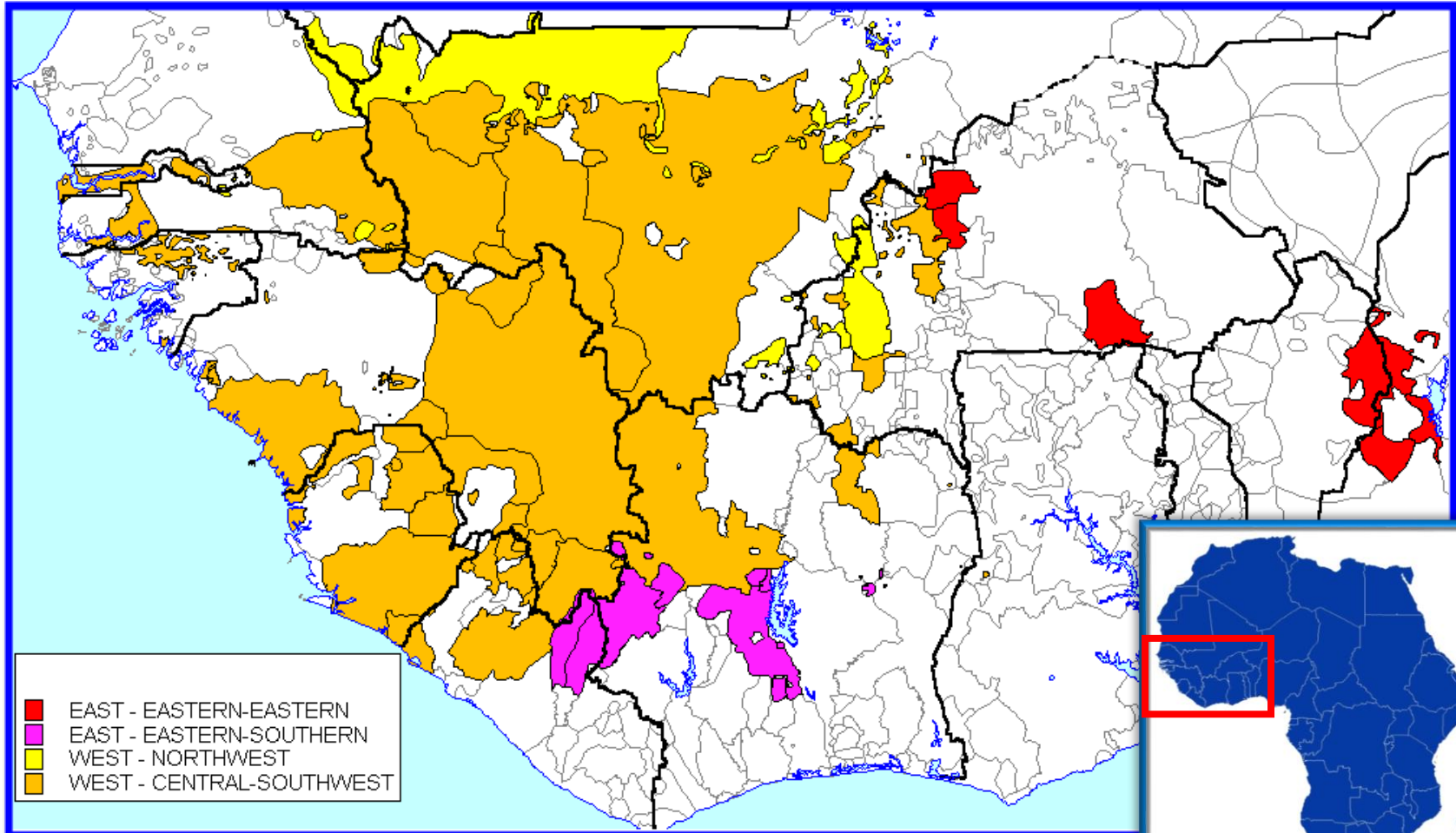


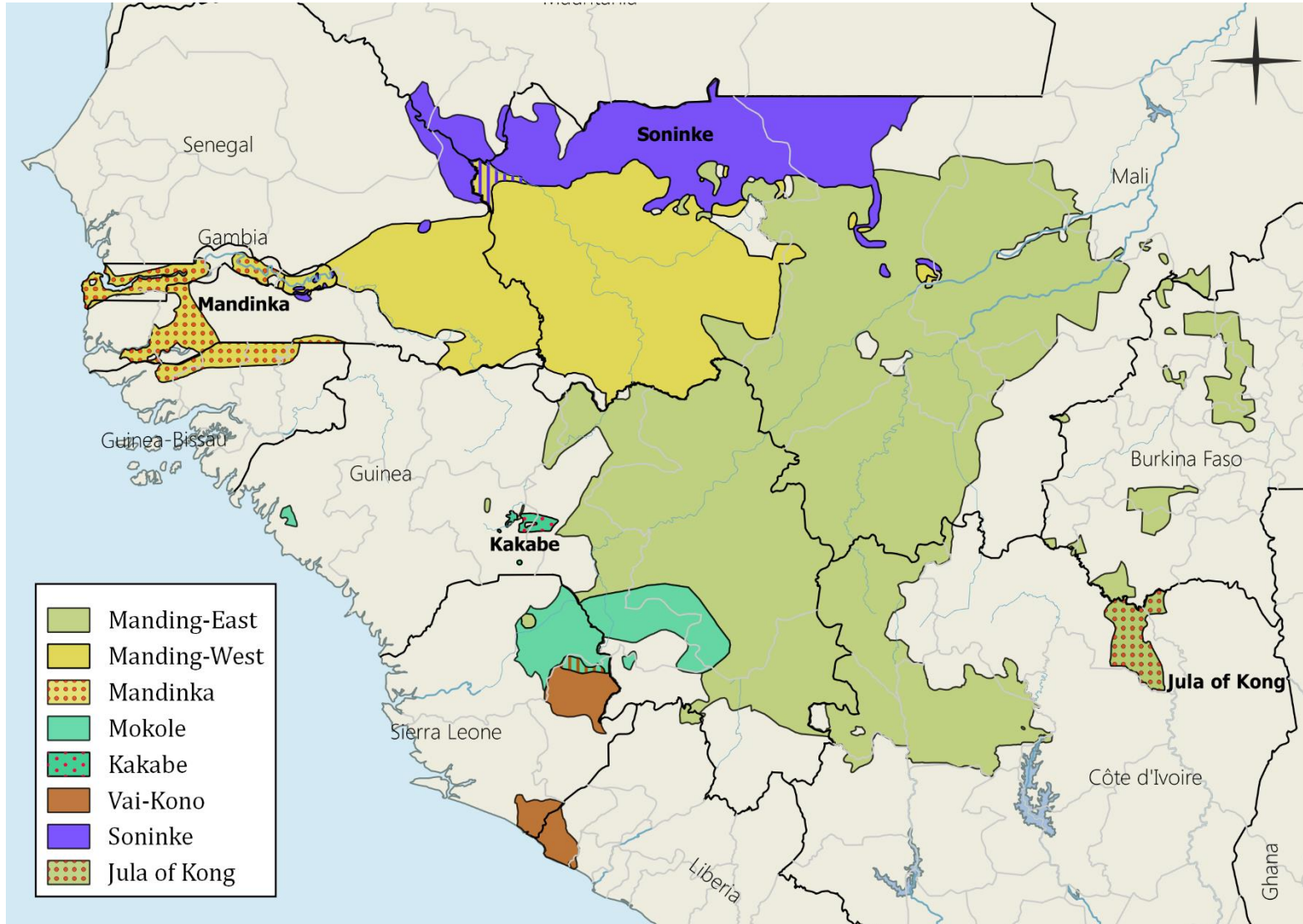
DEVELOPMENT OF TAM AND POLARITY MARKING CONDITIONED BY TRANSITIVITY STATUS IN WESTERN MANDE

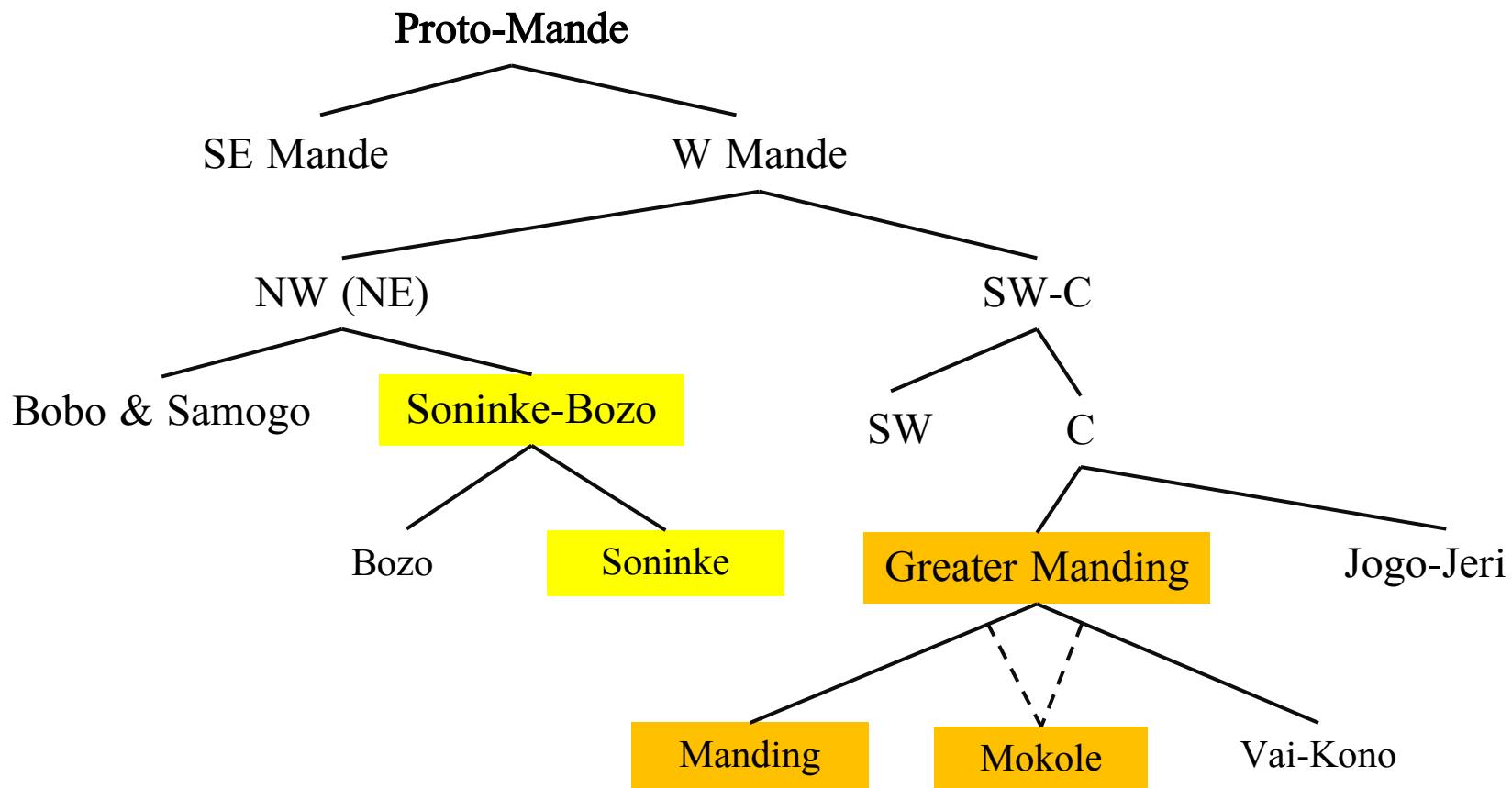
Dmitry Idiatov

LLACAN, CNRS, Sorbonne-Paris Cité, INALCO

dmitry.idiatov@cnrs.fr







- **2 tones**: L vs H, L vs \emptyset , L vs \emptyset vs H
- downdrift, downstep, different types of **prosodic boundaries**
- canonical syllable structure: **CV(N)**
- only a **few V-initial morphemes**: personal pronouns, functional morphemes, borrowings

- limited inflectional morphology
- suffixing
- **rigid** S (O) V X order
- TAMP (tense, aspect, mood, polarity) tend to be expressed syncretically but can be distributed across as many as 4 sites within the clause:

$TAMP_0$ S **TAMP₁** (O) V-**TAMP₂** X $TAMP_3$

* $TAMP_1$ aka Predicative Marker or AUX



- **rigid SOVX** constituent order
- **obligatory S** (except for imperatives)
- in a transitive construction: **obligatory O** (except in Bobo and Boko-Busa cluster)
- minimally, **O slot** is filled with a **dummy 3SG** pronoun (such as *à* in Greater Manding)
- typically, S and O are separated by **TAMP₁** marker
- in some languages, detransitivizing and transitivizing **verbal derivational affixes**



- In Greater Manding and Soninke, **transitivity status** may condition **the choice of TAMP marking** in clauses with certain TAMP values

Mandinka of Sédhiou (Creissels 2013:62)

- (1) a. **PFV_I⁺**: *-tá* (**TAMP₂**)

sùl-óo *sèlè-tà* *yír-ôo* *sántò*
 monkey-ART climb-PFV.I tree-ART at.the.top

‘The monkey climbed to the top of the tree.’

- b. **PFV_T⁺**: *yé* ~ *ŋá* (**TAMP₁**)

sùl-óo *yè* *yír-óo* *sèlè*
 monkey-ART PFV.T tree-ART climb

‘The monkey climbed the tree.’



Mandinka of Sédhiou (Creissels 2013:70, 181)

(2) a. **PFV_I⁻**: *mán^L* (**TAMP₁**)

ń mán ⁺sílán féŋ ná jàŋ

1SG PFV.NEG fear thing OBL here

‘The monkey climbed to the top of the tree.’

b. **PFV_T⁻**: *mán* (**TAMP₁**)

ń mán móóri jé jèè

1SG PFV.NEG marabout see there

‘The monkey climbed the tree.’



- the **range of TAMP constructions involved** varies across the languages according to:
 - **polarity**: always some positive constructions, sometimes also some negative constructions
 - **TAM**: always PFV⁺, sometimes also IPFV, PROG, SUBJ, IMP

For instance, in **Mandinka of Sédhiou**:

Transitivity status

	Intransitive		Transitive	
PFV ⁺	<i>-tá</i>	TAMP ₂	<i>yé ~ ŋá</i>	TAMP ₁
PFV ⁻	<i>mán^L</i>	TAMP ₁	<i>mán</i>	TAMP ₁
IPFV ⁻ (<i>_V-lá</i>)	<i>té^L ~ tí^L</i>	TAMP ₁	<i>té ~ tí</i>	TAMP ₁
PROG ⁻ (<i>_V-kàŋ</i>)	<i>té^L ~ tí^L</i>	TAMP ₁	<i>té ~ tí</i>	TAMP ₁



- the type involving **similar TAMP makers (SIM type)**, actually only similar TAMP₁ markers which differ only at their right edge:
 - **tonal SIM** type: floating ^L vs. its absence (e.g., Mandinka *mán^L* vs. *mán*)
 - **segmental SIM** type: final nasal vs. its absence (e.g., Soninke *nàn* vs. *nà*)
- the type involving **different TAMP makers (DIF type)**, such as:
 - TAMP₁ marker vs. TAMP₂ marker (e.g., Mandinka *yé ~ ñá* vs. *-tá*)
 - TAMP₁ marker vs. zero (e.g., Soninke *dà* vs. \emptyset)
 - *(TAMP₁ marker vs. a different TAMP₁ marker)



- In the case of **SIM** type, the difference in TAMP marking allows for two analyses:
 - **two TAMP markers** \Rightarrow TAMP marking is conditioned by **transitivity status** of the construction
 - one TAMP marker with **two allomorphs** \Rightarrow TAMP marking is conditioned by **its right context** / the type of **prosodic boundary to its right**
- The choice between the two analyses depends on our **goals**:
 - **explanatory adequacy** (diachronic & comparative perspective) \Rightarrow **two allomorphs**
 - **descriptive simplicity** (synchronic perspective) \Rightarrow it depends on the language
(e.g., Mandinka of Sédhiou vs. Jula of Kong or Kakabe)

(Idiatov 2015, ms.)

- The relation with transitivity status is **indirect** (correlation, not conditioning)
- **Differential phonological evolution** of a single TAMP₁ marker as a function of its right context: N (☞ O) vs. anything else
- This also explains why SIM type involves **only TAMP₁ markers** and affects only their **right edge**.
- **Frequency effects:**

In C_T (but never in C_I), TAMP₁ is frequently followed by a **3SG pronoun à** that has **L tone** (☞ **tonal SIM** type) and is **V-initial** (☞ **segmental SIM** type).

■ Patterns of **Western Mande phonotactics**:

• **segmental** (segmental SIM):

- verbs begin with C, but 3SG pronoun *à* is V-initial
- word-final nasals tend to be deleted before vowel (☞ C_T), but be preserved before consonant (☞ C_I & C_T)

Soninke:

	Intransitive ₁	Transitive
SUBJ ⁺ (TAMP ₁)	<i>nà</i> n	<i>nà</i>

Standard Bamana:

	Intransitive	Transitive
PFV ⁻ (TAMP ₁)		<i>má</i>
QUAL ⁻ (TAMP ₁) (< *PFV ⁻)	<i>má</i> n /mǎ́/	—

■ Patterns of **Western Mande phonotactics**:

• **tonal** (tonal SIM):

- when two L tone domains meet at the word boundary, one of the two L tone domains tend to be retracted (usually, the first one)
- L tone of a 3SG pronoun is the L tone that is most resistant to delinking or deletion
- floating ^L that does not originate in the L tone of the 3SG pronoun tends to be deleted (☞ floating ^L **deletion in C_T** before à 3SG)
- In some languages (such as Jula of Kong), H tone spreads rightwards over the word boundary (☞ floating ^L **preservation in C_T** before à 3SG)

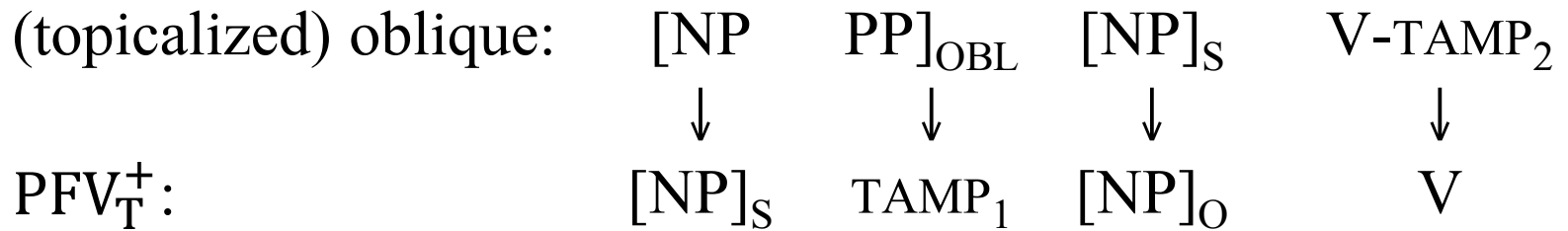
		Intransitive	Transitive
Mandinka of Sédhiou:	PFV ⁻ (TAMP ₁)	<i>mánj^L</i>	<i>mánj</i>
Jula of Kong:	PFV ⁻ (TAMP ₁)	<i>má</i>	<i>má^L</i>

- **DIF** type is attested for a limited number of positive constructions:
 - **PFV⁺** constructions in Soninke and most Greater Manding languages
 - two constructions **historically related to PFV⁺** in Soninke, viz. **SUBJ⁺** and **IMP.2PL⁺**
 - one **IPFV.FOC⁺** construction in Soninke

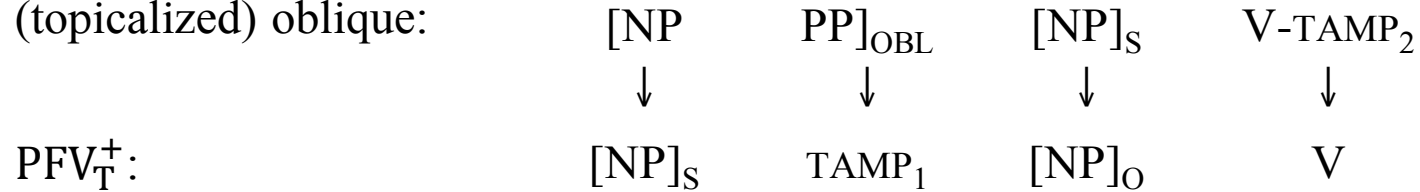
- similarity in form between some **TAMP₁ in PFV_T⁺** constructions and **postpositions**
- passive and causative/anticausative **P-lability** typical for the relevant Western Mande languages

- **PFV_I⁺** (with its TAMP₂ marker) is the **older** construction with originally resultative meaning and ***PFV_I⁺ ⇒ PFV_T⁺**
- ***agentive postposition** (of a topicalized NP) > TAMP₁ in PFV_T⁺

(3) *PFV_I⁺ with a fronted
 (topicalized) oblique:



- (3) *PFV_I⁺ with a fronted
 (topicalized) oblique:



- (4) *As for me, the letter is written* > *I have written the letter*

as for > TAMP₁ in PFV_T⁺

me > I_S

the letter_S > *the letter_O*

(3) *PFV_I⁺ with a fronted
 (topicalized) oblique:

	[NP	PP] _{OBL}	[NP] _S	V-TAMP ₂
	↓	↓	↓	↓
PFV _T ⁺ :	[NP] _S	TAMP ₁	[NP] _O	V

- Although typologically plausible, this account is **not natural** within **Mande morphosyntax**:
 - the **presumed source** construction, viz. *PFV_I⁺ with a fronted (topicalized) agentive oblique is extremely rare in West Africa and **absent in Mande**
 - most relevant languages **disallow** or **strongly disprefer** expressing the agent or the person concerned as oblique in passive/anticausative intransitive constructions
 - difficult to account for the **deletion** of the **original TAMP₂ suffix** & its **uniform character** across Greater Manding despite that the change in (3) must have occurred independently across Greater Manding

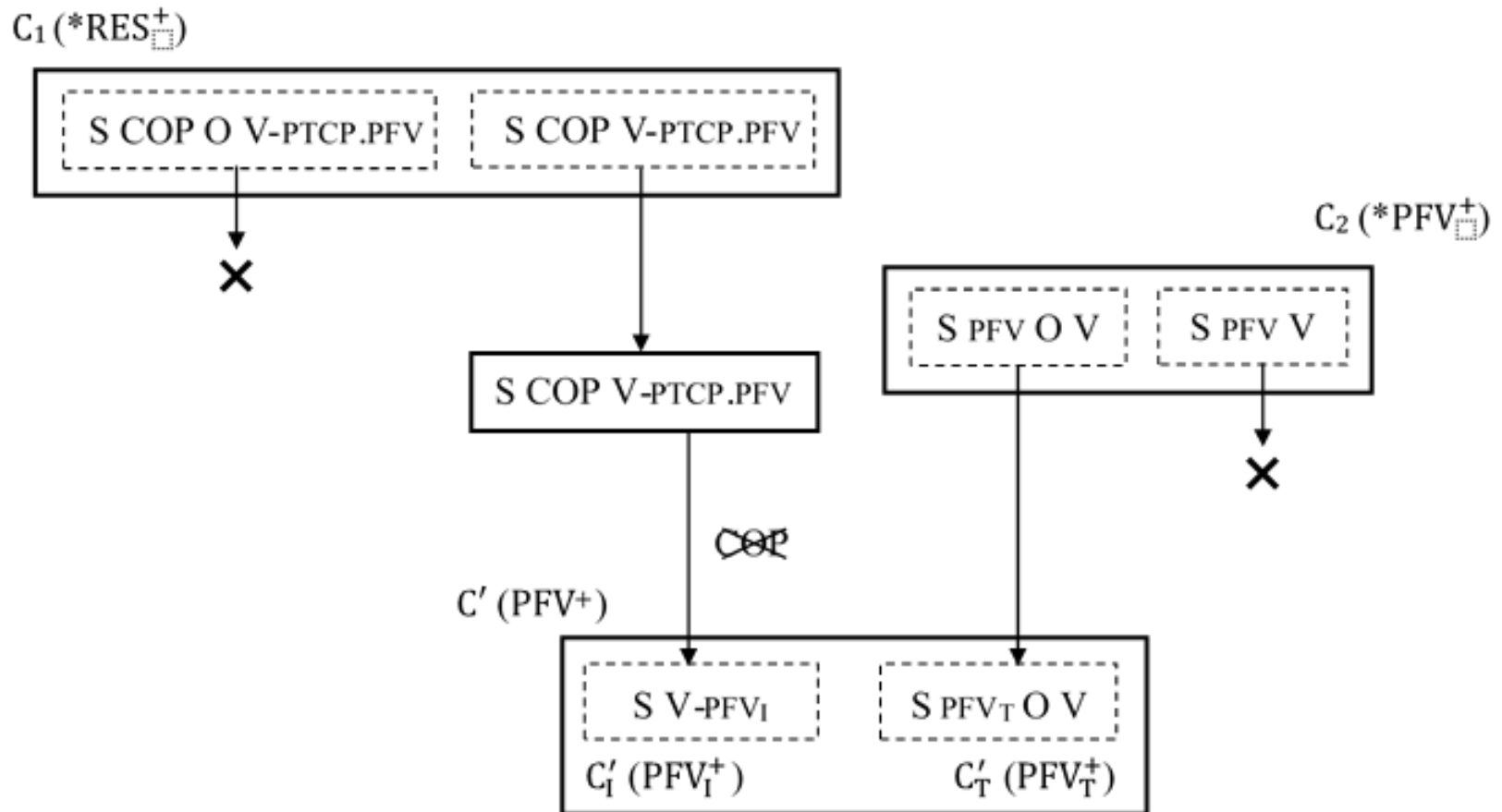
- **Merger** of **two constructions**, C_1 and C_2 , as variants of the new construction C' (i.e. the present-day PFV⁺ construction)
 - construction C_1 – primarily **intransitive**
 - construction C_2 – largely **indifferent to transitivity**
- **Specialization** of C_1 as the intransitive variant C'_I of C'
- **Specialization** of C_2 as the transitive variant C'_T of C'

- The construction **C₁**, the source of **PFV_I⁺**, was a construction based on a **perfective participle** [V-PTCP.PFV]:
 - as the **complement of a COP** in the **RES** construction [S COP V-PTCP.PFV] (or less likely, [S V-PTCP.PFV COP])
 - as a **dependent predication** [S V-PTCP.PFV] being part of the construction [[P₁]_{dependent} P₂] and expressing temporal precedence of P₁ to P₂
- Both the copula-based type and the dependent predication type are **very common** in Greater Manding
- In most languages, they are **exclusively intransitive**
- In Jogo (Kastenholz 1997), PFV⁺ TAMP₂ marker *-rɛ*, **cognate** to Greater Manding PFV_I⁺ TAMP₂ marker *-ta*, is **indifferent to transitivity**

- **Independent uses** of the [S V-PTCP.PFV] construction are well attested and can be explained through:
 - COP loss
 - insubordination

- Both pathways help to account naturally for the fact that in **PFV⁻** **TAMP marking** is **not conditioned by transitivity** and has the same structure as PFV_T⁺, viz. using a **TAMP₁** marker

- Reflexes of the PFV⁺ TAMP₁ marker *kà in Greater Manding provide an example of **specialization of a TAMP₁** marker originally indifferent to transitivity status to an exclusively transitive use as **PFV_T⁺**:
 - Typically, reflexes of the PFV⁺ marker *kà are used in PFV_T⁺
 - In some languages, it still allows for a limited (or fossilized) use in PFV_I⁺ (e.g., in Maninka of Kankan and Mandinka of Sédhiou)
 - One of the common reflexes of *kà is used in **QUAL⁺** construction, which is exclusively intransitive due to its semantics



- In WM, the **positive PFV domain** (but not the negative one!) tends to be **crowded**, with further distinctions made:
 - by using motion and phasal verbs as quasi-auxiliaries \Rightarrow TAMP₁ markers
 - by recruiting RES constructions
- Some of these constructions tend to **lose their specific semantics** evolving into a general PFV⁺ construction
- Due to their **semantics**, **RES** constructions tend to be much more common in **intransitive** uses \Rightarrow specialize as intransitive constructions \Rightarrow generalize as PFV_I⁺ \Rightarrow trigger the specialization
*PFV⁺ > PFV_T⁺.

- Explanation is historical
- Explanation is construction-based
- Explanation is grounded in language use and its frequency patterns
- Explanation is largely language-specific
- Broad typological tendencies (such as the differential PFV marking conditioned by transitivity status) are largely epiphenomenal