



HAL
open science

The Commented Walk Method as a Way of Highlighting Precise Daily Mobility Difficulties. A case study focusing on cognitive or mental diseases.

Joël Meissonnier, Virginie Dejoux

► To cite this version:

Joël Meissonnier, Virginie Dejoux. The Commented Walk Method as a Way of Highlighting Precise Daily Mobility Difficulties. A case study focusing on cognitive or mental diseases.. 6th European Transport Research Conference Moving Forward Innovative Solutions for Tomorrow's Mobility PGE Narodowy, Warsaw, Poland - 18-21 April 2016, Apr 2016, Warsaw, Poland. halshs-01778335

HAL Id: halshs-01778335

<https://shs.hal.science/halshs-01778335>

Submitted on 25 Apr 2018

HAL is a multi-disciplinary open access archive for the deposit and dissemination of scientific research documents, whether they are published or not. The documents may come from teaching and research institutions in France or abroad, or from public or private research centers.

L'archive ouverte pluridisciplinaire **HAL**, est destinée au dépôt et à la diffusion de documents scientifiques de niveau recherche, publiés ou non, émanant des établissements d'enseignement et de recherche français ou étrangers, des laboratoires publics ou privés.

The commented walk method as a way of highlighting precise daily mobility difficulties.

A case study focusing on cognitive or mental diseases.

Joël Meissonnier, CEREMA Dter Nord-Picardie, Lille, France.

Virginie Dejoux, Université Paris 1, CRIDUP, Paris, France.

Abstract

The French Act of 11 February 2005 on equal rights and opportunities, participation and citizenship of people with disabilities highlights the need "for people with disabilities or reduced mobility" to have access to the complete mobility chain of the transport system. This law was initially planned to apply from 2015. Many efforts have been made to improve life for those with physical, visual and, to a lesser extent, hearing impairments. But there is a lot of room for improvement in situations regarding psychological, cognitive and mental impairment. This is largely due to a lack of knowledge on the difficulties experienced by the above when they travel.

A qualitative methodology called 'commented walks' (Thibaud, 2001) is employed by urbanists to investigate the quality of the urban environment using videos. This paper will show how this method is also useful to complete quantitative approaches and to point out the difficulties encountered by people with disabilities in the urban space.

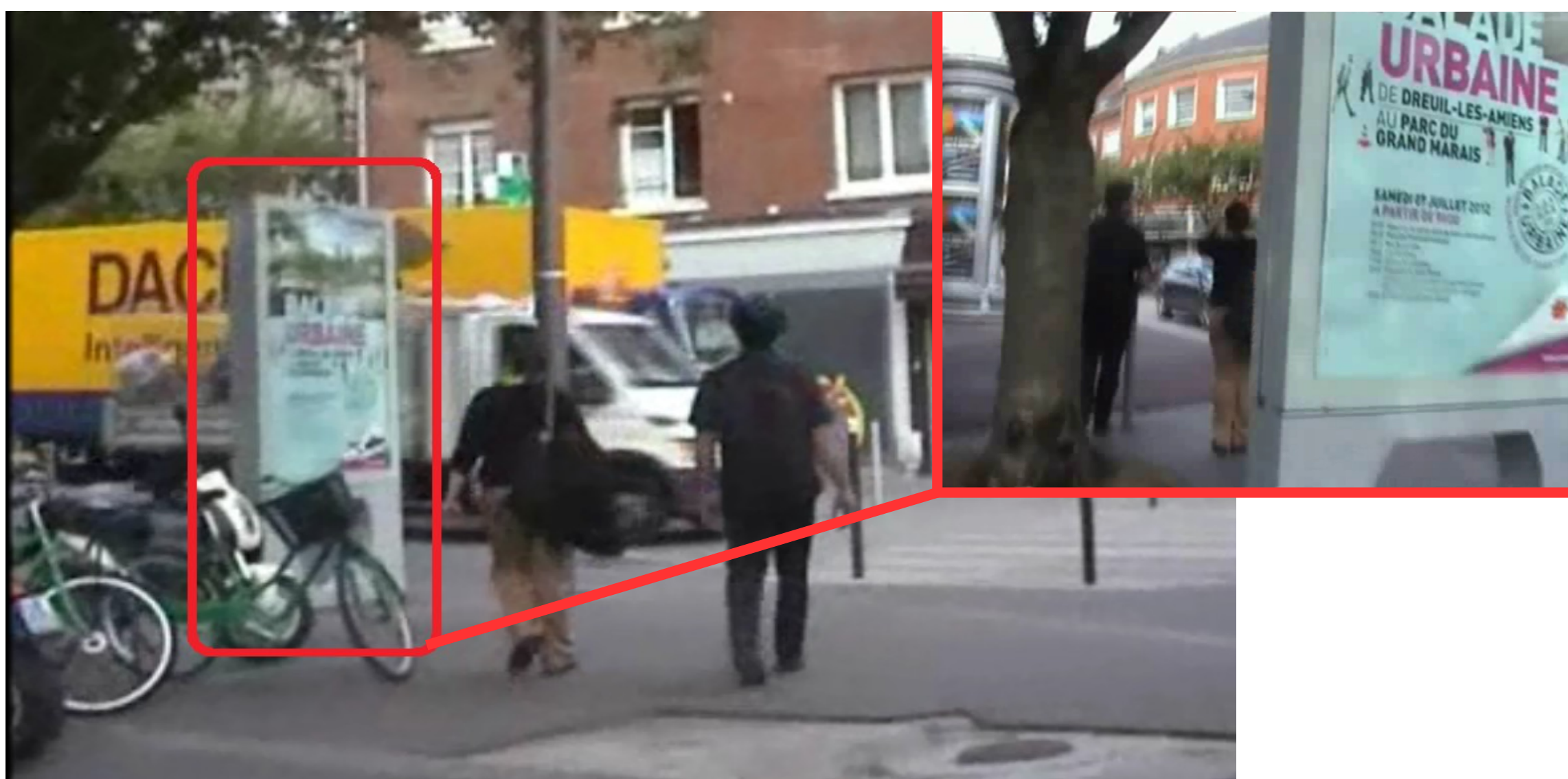
The main recommendations from this research are:

- need for a coherent and foolproof continuity of informational systems (staking, numbering of buildings in the street, bus destination displays...)
- necessity to minimize the 'affordances' (Gibson, 1977) that might become highly disruptive cognitive attractors (Chevrier, Juguet, 2003) (i.e. advertising, illuminated signs that divert the focus of attention ...).
- need for a simplification and systematization of the cognitive procedures required to reach a destination.
- need for staff training : human assistance remains essential and can't be replaced by any automatons.

The videos resulting from the 'commented walk' methodology are important, firstly to explore the difficulties experienced, then to inform the necessary authorities and finally to feed into training programs designed for logistic officers or bus drivers.

Disruptive cognitive attractors : adverts

The presence of advertisements on the road contributed to Marion's confusion. They distracted her from looking for relevant informations.



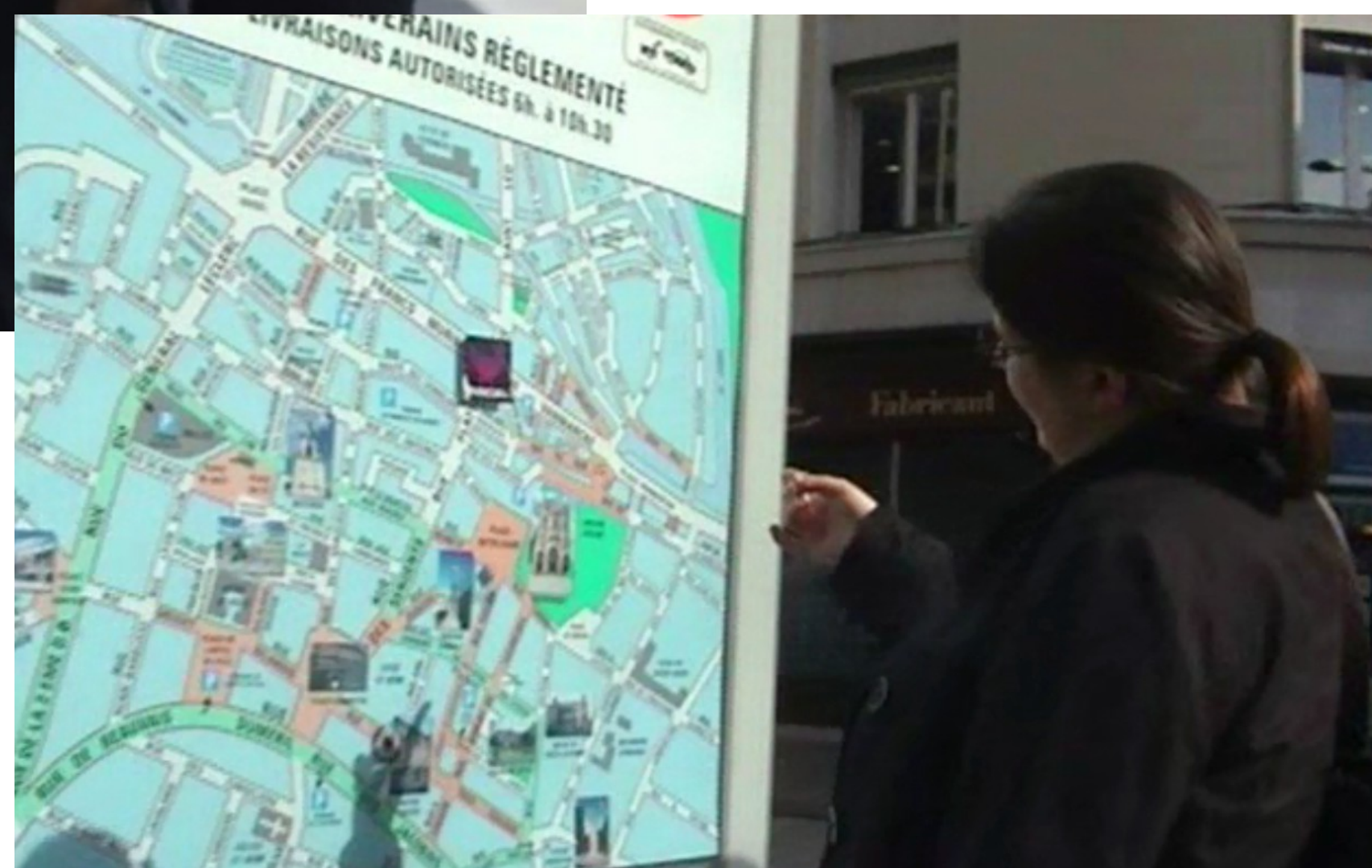
An information discontinuity : one bus line and several final destinations.

Marie couldn't know the final destination because she had arrived from the back of the bus where there was only the bus number on display.



Human assistance : some needs for trainings

In Amiens's main interchange bus station, Fabien spontaneously questioned an employee of the transport company how to get to the zoo. The employee advised Fabien to take bus No. 1. Unfortunately he didn't think of indicating either the right direction and final destination or the location of the bus stop. This employee was probably lacking training.



Too complex cognitive procedures to reach a destination

Marion doesn't bother with city maps because for her, most of the city maps require too many complex cognitive procedures to reach a destination. She tried to explain to us that the locations of city maps are badly placed. Usually located on the back of advertising hoardings, these geocentric local maps should permit a simple cognitive projection on the ground with north directly in front of the user thereby no longer requiring an additional cognitive operation such as turning in order to face north.

Organisers: