



HAL
open science

Macroeconomic evidence suggests that asylum seekers are not a “burden” for Western European countries

Hippolyte d’Albis, Ekrame Boubtane, Dramane Coulibaly

► To cite this version:

Hippolyte d’Albis, Ekrame Boubtane, Dramane Coulibaly. Macroeconomic evidence suggests that asylum seekers are not a “burden” for Western European countries. 2018. halshs-01821515

HAL Id: halshs-01821515

<https://shs.hal.science/halshs-01821515v1>

Preprint submitted on 22 Jun 2018

HAL is a multi-disciplinary open access archive for the deposit and dissemination of scientific research documents, whether they are published or not. The documents may come from teaching and research institutions in France or abroad, or from public or private research centers.

L’archive ouverte pluridisciplinaire **HAL**, est destinée au dépôt et à la diffusion de documents scientifiques de niveau recherche, publiés ou non, émanant des établissements d’enseignement et de recherche français ou étrangers, des laboratoires publics ou privés.



PARIS SCHOOL OF ECONOMICS
ÉCOLE D'ÉCONOMIE DE PARIS

WORKING PAPER N° 2018 – 31

Macroeconomic Evidence Suggests That Asylum Seekers Are Not a “Burden” for Western European Countries

**Hippolyte d'Albis
Ekrame Boubtane
Dramane Coulibaly**

JEL Codes: E20, F22, J61

Keywords : asylum seekers, net migration, public finances, growth, unemployment, panel VAR



PARIS-JOURDAN SCIENCES ÉCONOMIQUES

48, Bd JOURDAN – E.N.S. – 75014 PARIS

TÉL. : 33(0) 1 80 52 16 00=

www.pse.ens.fr

CENTRE NATIONAL DE LA RECHERCHE SCIENTIFIQUE – ÉCOLE DES HAUTES ÉTUDES EN SCIENCES SOCIALES
ÉCOLE DES PONTS PARISTECH – ÉCOLE NORMALE SUPÉRIEURE
INSTITUT NATIONAL DE LA RECHERCHE AGRONOMIQUE – UNIVERSITÉ PARIS 1

Macroeconomic Evidence Suggests That Asylum Seekers Are Not a “Burden” for Western European Countries

Hippolyte d’Albis* Ekrame Boubtane† Dramane Coulibaly‡

Published 20 June 2018 in *Science Advances*; 4: eaaq0889

<https://dx.doi.org/10.1126/sciadv.aaq0883>

Abstract

This paper aims to evaluate the economic and fiscal effects of inflows of asylum seekers into Western Europe from 1985 to 2015. It relies on an empirical methodology that is widely used to estimate the macroeconomic effects of structural shocks and policies. It shows that inflows of asylum seekers do not deteriorate host countries’ economic performance or fiscal balance, because the increase in public spending induced by asylum seekers is more than compensated for by an increase in tax revenues net of transfers. As asylum seekers become permanent residents, their macroeconomic impacts become positive.

JEL classification: E20, F22, J61.

Keywords: asylum seekers, net migration, public finances, growth, unemployment, panel VAR

*Paris School of Economics, CNRS. Corresponding author, E-mail:hdalbis@psemail.eu

†CERDI-CNRS, University Clermont Auvergne

‡EconomiX-CNRS, University Paris Nanterre

Introduction

Wars in Syria and in the Middle East in general have caused a major humanitarian crisis. The United Nations High Commissioner for Refugees reported that there were more displaced persons in 2015 than in any year since the Second World War. Europe alone received more than one million asylum applications, a situation widely described as a “migrant crisis”. This article attempts to quantify the effects of inflows of asylum seekers on the economies of Western Europe. We examine effects on host countries’ economic performance, as measured using GDP per capita, unemployment rate, and public finances. Relevant economic studies have mainly focused on the effects of permanent immigration and have reported divergent findings; in particular, certain studies have stressed the fiscal costs of particular categories of immigrants (1, 2) and the adverse effects of immigrants on natives’ employment prospects (3), whereas others studies have highlighted the beneficial impacts of immigrants on host countries’ economic performance (4–6). We aim to present a statistical analysis that includes all of the aforementioned variables and their possible interdependencies using a methodology that is typically used to assess the macroeconomic effects of fiscal and monetary policies. To provide a better understanding of the examined effects, our analysis distinguishes between flows of permanent migrants, as defined using international classifications (7), and flows of asylum seekers.

The present study uses annual statistical data from 15 Western European countries from 1985 to 2015. The selected countries are Austria, Belgium, Denmark, Finland, France, Germany, Ireland, Iceland, Italy, the Netherlands, Norway, Spain, Sweden, Portugal and the United Kingdom. These countries were selected on the basis of the availability of economic and migration data for the entire study period in two international databases, Eurostat and the OECD Economic Outlook (8); this approach ensures the accessibility and comparability of the study data. Notably, Greece, Luxembourg and Switzerland are not considered because fiscal data before 1990 are not available for these nations in the Economic Outlook database. The European countries that we consider receive most of the asylum applications in Europe (89% in 2015); moreover, in contrast to certain Eastern European countries, the selected nations are almost never the home

countries of the asylum seekers.

This study uses two variables related to international migration, both of which are constructed from Eurostat data. The first, the flow of asylum seekers, is measured as the number of first applications, pending at the end of the year, made by people who state that they are unable to return to their country of origin due to a well-founded fear of being persecuted. The lodging of an asylum application with a country entitles the applicant to reside legally in that country while the application is being processed but generally does not entitle the applicant to work and does not necessarily lead to being granted refugee status (9). We express flows of asylum seekers as rates per thousand inhabitants (based on average population).

The second variable is the net flow of migrants, which is measured using the net migration (plus adjustment) rate per thousand inhabitants. The net flow of migrants therefore includes all immigrants and does not distinguish between nationals and foreigners. Net migration data are produced by Eurostat from population statistics that exclude persons temporarily staying in a country and, most notably, asylum seekers. In methodological terms, this point is important because it emphasizes the fact that our two migration variables count different set of people and thus are not mechanically correlated. When the asylum application procedure is completed, only applicants who obtain refugee status are allowed to settle long-term in their host countries; these individuals are then considered to be permanent migrants and included in population statistics. The population effects of flows of asylum seekers are thus postponed and potentially reduced because not all applicants obtain refugee status.

Descriptive statistics reveal considerable variations in migration flows across countries (see Fig. S1 in Supplementary Materials): certain countries (such as Austria and Sweden) have high flows of asylum seekers that are closely correlated with net flows of migrants, whereas in other countries (such as Spain and Portugal), the flow of asylum seekers is much lower than the net flow of migrants. For a subset of countries, flows of asylum seekers peaked in the early 1990s due to the war in former Yugoslavia. More recently, the war in Syria induced a large increase in flows to certain countries but hardly altered

flows to other nations.

We also use economic variables to estimate how they interact with the aforementioned migration variables. As considered in (10–16), we use real GDP per capita and unemployment rate to assess macroeconomic performance. In addition, we use the same indicators for public finances that are used in studies that measure the multiplier effects of fiscal shocks (11–16). Two main variables are considered: public spending (that is, general government final consumption and investment expenditures) and net taxes (that is, general government revenues minus transfers). These variables, obtained from the OECD Economic Outlook database, are expressed in real terms and divided by average population. Moreover, we also calculate fiscal balance by subtracting public spending from net taxes and dividing the resulting value by GDP (see Supplementary Materials).

To assess the effects of net flows of migrants and asylum seekers on Western European economies, we have constructed and estimated a panel vector autoregressive (VAR) model. The VAR approach, which has been widely used in macroeconomics since (17), is employed to quantify an economy’s response to an exogenous structural shock (i.e., the effects of an unusual external event on the economy). With appropriate identification of the shocks based on economic theory, this approach has been used to assess the effects of economic policies (18), particularly fiscal policies (11–16). We consider it to be appropriate for analyzing the macroeconomic effects of migration shocks because it addresses reverse causality bias, which is clearly present in this case because economic situations are both affected by immigration and likely to influence decisions to migrate. Researchers have previously used the VAR technique has been used by (10, 19) to examine the macroeconomic effects of immigration and to evaluate the effects of demographic changes (20–23). The innovative aspect of the present study is that it uses a panel VAR model to analyze the effects of immigration and asylum policies on public finances.

We differ therefore from purely accounting approaches, including both static (2, 24) and dynamic (25, 26) approaches, because our method includes interactions between variables and is not based on assumptions about the growth of economic variables. We also differ from approaches that use computable general equilibrium models (27, 28), which

are based on strong theoretical assumptions, particularly regarding market equilibrium and restrictive production functions, and on key parameters that are not estimated. VAR approaches rely only on data and do not impose a theoretical model; these features are certainly appropriate for scientifically addressing sensitive topics such as immigration and asylum (29). A further advantage of VAR models is that they provide dynamic estimations of short- and medium-term effects of migration shocks.

Notably, given the time coverage of the data, it is not possible to provide an analysis specific to each country. Our findings are based on a panel of countries and assess the average responses of these countries to the analyzed shocks. The statistical model that we estimate is described in detail in our Supplementary Materials. The main assumption required for our analysis concerns the strategy for identifying shocks. We use the Cholesky decomposition and therefore impose an order on our variables, specifying which variables may be affected in period t by a modification of another variable during the same period. These assumptions relate to the contemporaneous effects of the examined shocks, and clearly, no restriction is placed upon the variables for dates after t . We define this order based on the literature and verify that all our results are robust to order change. For economic and fiscal variables, much of the literature (11–16) uses the following order: public spending per capita, net taxes per capita, GDP per capita, and unemployment rate. A shock to public spending in year t may affect net taxes in year t , whereas a shock to net taxes in a particular year will not affect public spending in that year. Migration variables come before economic variables as in (10), reflecting the fact that migration decisions are reached before migrating and are therefore not affected by shocks to economies at the time of migration. Among migration variables, we have placed flow of asylum seekers before net flow of migrants, as part of the former is included in the latter once their applications for international protection is approved.

Our empirical strategy is as follows. We construct a model that can replicate recent findings in the literature concerning the economic effects of fiscal policies. We then analyze the economic and fiscal effects of migration shocks.

Results and Discussion

We construct the model in two stages. First we estimate a statistical model without the migration variables and analyze the economy's response to Keynesian stimulus shocks. For public spending shocks, our results are similar to those obtained in (30) and are particularly close to those reported in (12, 13, 15), in which 14 European countries are examined from 1970 to 2004. We then estimate the complete model, including flows of asylum seekers and net flows of migrants. To validate the model, we analyze the economy's response to the same Keynesian stimulus shocks (see Supplementary Materials). We find that the economy's responses to public spending and tax shocks are similar in the models with and without migration variables. We can therefore use our model to analyze the macroeconomic effects of migration shocks.

The effects of a shock on the flow of asylum seekers and the net flow of migrants are indicated in Table 1, and the corresponding impulse response functions are reproduced in Fig. 1, which provides a graphical representation of these effects. These results show percentage responses to a one-point increase in migration flows. Our estimates indicate that these shocks have positive effects on European economies: they significantly increase per capita GDP, reduce unemployment and improve the balance of public finances: the additional public expenditures, which is usually referred to as the "refugee burden", is more than outweighed by the increase in tax revenues. The effect of a shock on the net flow of migrants is positive from the year of that shock and remains significant for at least two years. An inflow of asylum seekers takes longer to significantly impact the economy; in particular, significant positive effects on GDP are observed from three to seven years after this shock. The extents of the observed effects also differ: the effects of a shock on the net flow of migrants are strong. GDP per capita increases significantly for four years running, with an increase of +0.32% two years after the shock; the unemployment rate falls by roughly 0.14 percentage points two years after the shock; and fiscal balance improves by 0.11 percentage points at its peak, which occurs one year after the shock. In the Supplementary Materials (See "Relation to other studies"), we compare these estimates with those obtained in related studies. However, the corresponding effects of a

shock on the flow of asylum seekers are less clear. This result might be attributable to the facts that only a subset of asylum seekers remain in their host country and asylum seekers can initially find it difficult to access the labor market due to legal restrictions (9).

The dynamic responses of migrations to their own shocks and the interdependence between the net flow of migrants and the flow of asylum seekers can also be analyzed using our model. As shown in Table 2 and Fig. 2, both the flow of asylum seekers and the net flow of migrants respond somewhat persistently to their own shocks, with significant responses observed many years after a shock. More importantly, Table 2 and Fig. 2 show that the dynamic effect of an asylum shock on the net flow of migrants is positive during the six years after the shock, a phenomenon that reflects the fact that certain asylum seekers become permanent migrants. Table 2 and Fig. 2 also indicate the effect of a shock to the net flow of migrants on the flow of asylum seekers. This effect is positive and significant one year after the shock, confirming that asylum seekers tend to travel towards countries open to immigration (31).

Our results are robust; in particular, these findings are not qualitatively altered when estimates are produced using alternative technical assumptions (such as an alternative order in the Cholesky decomposition, without considering contemporaneous cross-country interdependence, and an altered estimation period that excludes the recent “migrant crisis”). See Supplementary Materials for a detailed discussion.

Our results suggest that the “migrant crisis” currently experienced by Europe is not likely to provoke an economic crisis, but might rather be an economic opportunity. We do not deny that large flows of asylum seekers into Europe pose many political challenges both within host countries and with respect to the European coordination of national policies. However, these political challenges may be more easily addressed if the *cliché* that international migration is associated with economic “burden” can be dispelled. In particular, we believe that the allocation mechanism for asylum seekers should be more dependent on political and diplomatic considerations than on economic concerns.

Materials and Methods

The migration variables are from Eurostat database. Precisely, we use the asylum applications pending at the end of the year from the Asylum and managed migration (migr) database, series codes *migr_asyctz* and *migr_asyappctza*. The data on the average population (series code *AVG*), used to express the flows of asylum per thousand inhabitants, are from the Population change (demo_gind) database. The net flow of migrants is measured by the *CNMIGRATRT* series from the Population change (demo_gind) database. The economic and fiscal data are from the OECD Economic Outlook database (8) and are computed, as in (12, 13, 15), by using the series codes listed in Supplementary Materials.

Our empirical analysis is based on a panel VAR model estimated by using the bias-corrected fixed-effects technique (see Supplementary Materials for details). We consider two models, a baseline model that aims at replicating the recent findings of the literature on spending shock and a second model that includes migration variables. The models are estimated in log-levels allowing for country-fixed effects and country-specific time trends, and year-specific effects. In the additional results section of the Supplementary Materials, we describe the results of an alternative specification using log first differences of GDP, spending and net taxes.

References

1. R. Rowthorn, The fiscal impact of immigration on the advanced economies. *Oxford Rev. Econ. Pol.* **24**, 560-580 (2008).
2. C. Dustmann, T. Frattini, The fiscal effects of immigration to the UK. *Econ. J.* **123**, F593-F643 (2014).
3. J. Angrist, A. Kugler, Protective or counter-productive? Labor market institutions and the effect of immigration on EU natives. *Econ. J.* **113**, F302-F331 (2003).
4. P. Ager, M. Brückner, Cultural diversity and economic growth: Evidence from the US during the age of mass migration. *Europ. Econ. Rev.* **64**, 76-97 (2013).
5. J. Ortega, G. Peri, Openness and income: The roles of trade and migration. *J. Int. Econ.* **92**, 231-251 (2014).
6. M. A. Clemens, Economics and emigration: Trillion-dollar bills on the sidewalk? *J. Econ. Perspect.*, **25**, 83-106 (2011).
7. United Nations, Department of Economic and Social Affairs, Population Division, *International Migration Report 2015: Highlights* (ST/ESA/SER.A/375) (UNDESA 2016).
8. Organisation for Economic Co-operation and Development (OECD), *OECD Economic Outlook* No. 99 (Edition 2016/1) OECD Economic Outlook: Statistics and Projections (database).
9. C. Dustmann, F. Fasani, T. Frattini, L. Minale, U. Schönberg, On the economics and politics of refugee migration. *Econ. Pol.*, **32** 497-550 (2017).
10. H. d'Albis, E. Boubtane, D. Coulibaly, Immigration policy and macroeconomic performances in France. *Ann. Econ. Statist.* **121-122**, 279-308 (2016).

11. O. J. Blanchard, R. Perotti, An empirical characterization of the dynamic effects change in government spending and taxes on output. *Quart. J. Econ.* **117**, 1329-1368 (2002).
12. R. Beetsma, M. Giuliadori, F. Klaassen, Trade spill-overs of fiscal policy in the European Union: a panel analysis. *Econ. Pol.* **21**, 639-687 (2006).
13. R. Beetsma, M. Giuliadori, F. Klaassen, The effects of public spending shocks on trade balances and budget deficits in the European Union. *J. Eur. Econ. Assoc.* **6**, 414-423 (2008).
14. T. Monacelli, R. Perotti, A. Trigari, Unemployment fiscal multipliers. *J. Monet Econ.* **57**, 531-553 (2010).
15. R. Beetsma, M. Giuliadori, The effects of government purchases shocks: review and estimates for the EU. *Econ. J.* **121**, F4-F32 (2011).
16. M. Brückner, E. Pappa, Fiscal expansions, unemployment, and labor force participation: Theory and evidence. *Int. Econ. J.* **53**, 1205-1228 (2012).
17. C. A. Sims, Macroeconomics and reality. *Econometrica* **48**, 1-48 (1980).
18. J. H. Stock, M. W. Watson, Vector autoregressions. *J. Econ. Perspect.* **15**, 101-115 (2001).
19. O. J. Blanchard, L. F. Katz, Regional evolutions. *Brookings Pap. Econ. Act.* **1**, 1-75 (1992).
20. Z. Eckstein, T. P. Schultz, TK. I. Wolpin, Short run fluctuations in fertility and mortality in pre-industrial Sweden. *Europ. Econ. Rev.* **26**, 295-317 (1985).
21. E. Nicolini, Was Malthus right? A VAR analysis of economic and demographic interactions in pre-industrial England. *Europ. Rev. Econ. Hist.* **11**, 99-121 (2007).
22. S. Kim, J. W. Lee, Demographic changes, saving, and current account: An analysis based on a panel VAR model. *Jpn. World Econ.* **20**, 236-256 (2008).

23. A. Fernihough, Malthusian dynamics in a diverging Europe: Northern Italy, 1650-1881. *Demography* **50**, 311-332 (2013).
24. G. Borjas, The economics of immigration. *J. Econ. Lit.* **32**, 1667-1717 (1994).
25. A. J. Auerbach, P. Oreopoulos, Analyzing the fiscal impact of US immigration. *Amer. Econ. Rev.* **89**, 176-180. (1999).
26. R. Lee, T. Miller, Immigration, social security and broader fiscal impacts. *Amer. Econ. Rev.* **90**, 350-354 (2000).
27. K. Storesletten, Sustaining fiscal policy through immigration. *J. Political Econ.* **108**, 300-323 (2000).
28. P. Schou, Immigration, integration and fiscal sustainability. *J. Popul. Econ.* **19**, 671-689 (2006).
29. I. Preston, The effect of immigration on public finances. *Econ. J.* **124**, F569-F592 (2014).
30. A. J. Auerbach, Y. Gorodnichenko, Measuring the output responses to fiscal policy. *Am. Econ. J. Econ. Policy.* **4**, 1-27 (2012).
31. T. J. Hatton, The rise and fall of asylum: What happened and why? *Econ. J.* **119**, F183-F213 (2009).
32. S. J. Nickell, Biases in dynamic models with fixed effects. *Econometrica* **49**, 1417-1426 (1981).
33. J. Hahn, G. Kuersteiner, Asymptotically unbiased inference for a dynamic panel model with fixed effects when both n and T are large. *Econometrica* **70**, 1639-1657 (2002).
34. J. F. Kiviet, On bias, inconsistency, and efficiency of various estimators in dynamic panel data models. *J. Econom.* **68**, 53-78 (1995).
35. H. Lütkepohl, *New introduction to multiple time series analysis.* (2005), pp. 15.

36. A. J. Auerbach, W.G. Gale, B.H. Harris, Activist fiscal policy. *J. Econ. Perspect.* **24**, 141-164. (2010).
37. OECD, *Economic Outlook Database Inventory 99th edition*, Volume 2016/1 (2016).

Acknowledgments: We thank two anonymous referees for the stimulating comments and helpful suggestions. **Author contributions:** H.A., E.B., and D.C. conceived the research, designed the analyses, conducted the analyses, and wrote the manuscript. **Competing Interests:** The authors declare that they have no competing interests. **Data and materials availability:** All data needed to evaluate the conclusions in the paper are available at Eurostat and in OECD Economic Outlook No.99 (Edition 2016/1). Series codes of all variables used is present in the paper and/or the Supplementary Materials.

Supplementary Materials contents

Supplementary Materials and Methods

Additional Results

Figs S1 to S4

Tables S1 to S3

References (32-37)

Table 1: **Economic and Fiscal Responses to Migration Shocks**

	Year 0	Year 1	Year 2	Year 5	Year 10
<i>Increase in the flow of asylum seekers</i>					
Spending per capita	0.28	0.33	0.34	0.58	0.24
Net taxes per capita	0.57	0.63	1.01	1.31*	0.20
GDP per capita	0.27	0.45	0.54	0.59*	0.13
Unemployment rate	-0.08*	-0.15*	-0.21*	-0.21*	-0.02
Fiscal balance/GDP	0.06	0.07	0.15	0.15	-0.01
<i>Increase in the net flow of migrants</i>					
Spending per capita	0.29*	0.49*	0.60*	0.33*	-0.02
Net taxes per capita	0.85*	1.11*	0.95*	0.19	-0.09
GDP per capita	0.17*	0.24*	0.32*	0.12	-0.05
Unemployment rate	-0.12*	-0.16*	-0.14*	-0.03	0.01
Fiscal balance/GDP	0.11*	0.11*	0.05	-0.04	-0.02

Notes: Year 0 stands for the year of the shock. The size of a shock on the net flow of migrants or the flow of asylum seekers is set to 1 incoming individual per thousand inhabitants. For per capita, GDP, spending and net taxes, the responses are expressed in percentage change; for the unemployment rate and fiscal balance/GDP, the responses are in percentage points change. * denotes statistical significance at the 10% level.

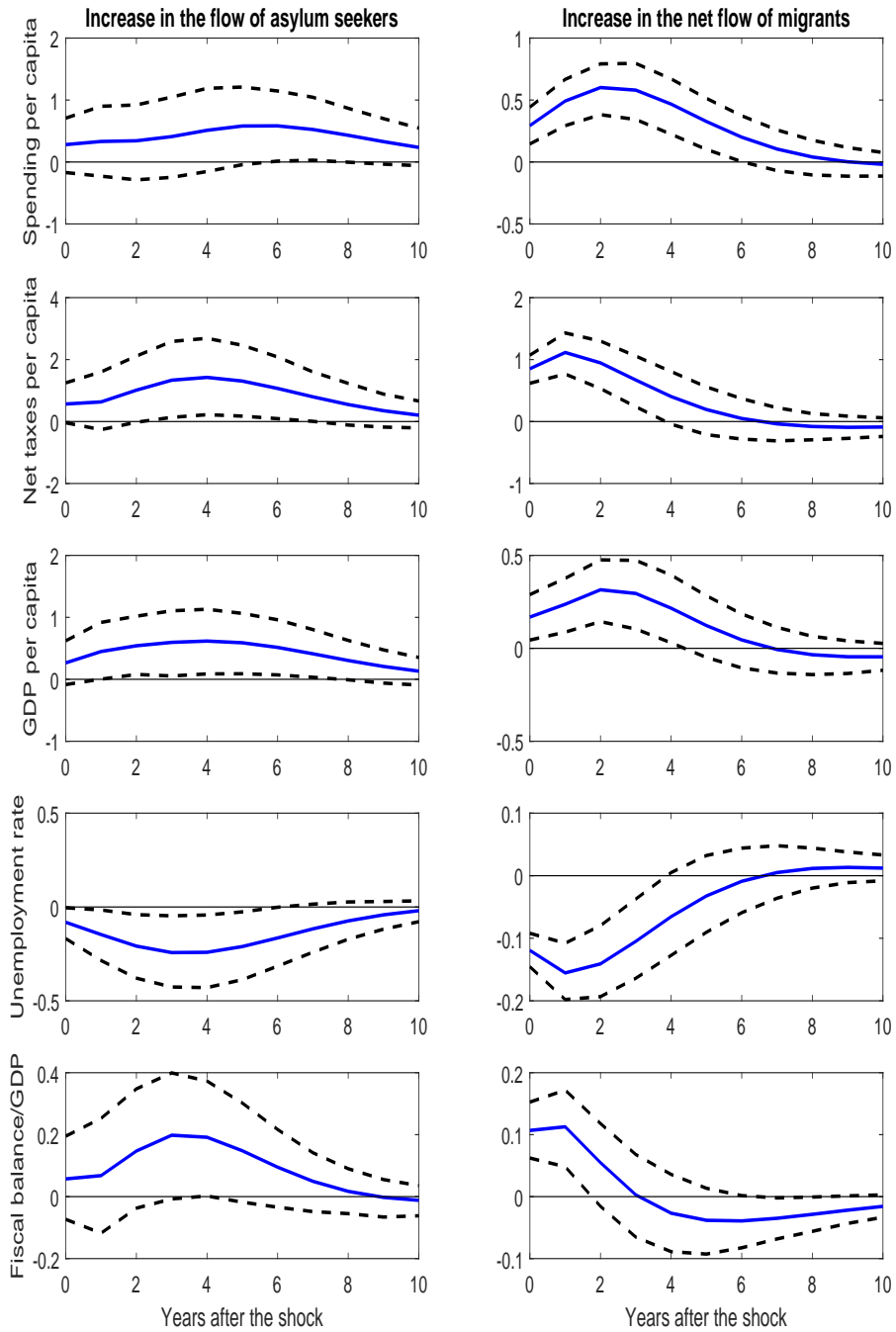


Figure 1: **Economic and Fiscal Responses to Migration Shocks**

Year 0 stands for the year of the shock. The size of a shock on the net flow of migrants or the flow of asylum seekers is set to 1 incoming individual per thousand inhabitants. For per capita, GDP, spending and net taxes, the responses are expressed in percentage change; for the unemployment rate and fiscal balance/GDP, the responses are in percentage points change. The solid line gives the estimated impulse responses. The dashed lines give the 90% confidence intervals that are generated by 5,000 Monte Carlo repetitions.

Table 2: **Migration Responses to Migration Shocks**

	Year 0	Year 1	Year 2	Year 5	Year 10
<i>Increase in the flow of asylum seekers</i>					
Flow of asylum seekers	1.00*	0.80*	0.46*	0.08*	0.03
Net flow of migrants	0.28*	0.42*	0.61*	0.44*	0.05
<i>Increase in the net flow of migrants</i>					
Flow of asylum seekers	0.00	0.03*	0.03	0.02	0.00
Net flow of migrants	1.00*	0.92*	0.57*	0.06	0.00

Notes: Year 0 stands for the year of the shock. The size of a shock on the net flow of migrants or the flow of asylum seekers is set to 1 incoming individual per thousand inhabitants. The responses are expressed in per 1000 point change. * denotes statistical significance at the 10% level.

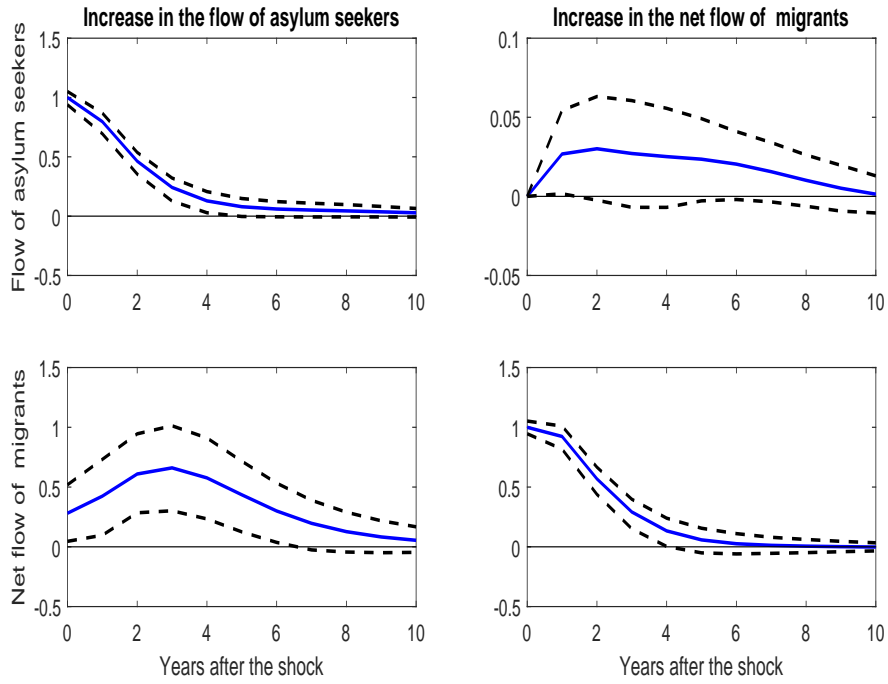


Figure 2: Migration Responses to Migration Shocks

Year 0 stands for the year of the shock. The size of a shock on the net flow of migrants or the flow of asylum seekers is set to 1 incoming individual per thousand inhabitants. The responses are expressed in per 1000 point change. The solid line gives the estimated impulse responses. The dashed lines give the 90% confidence intervals that are generated by 5,000 Monte Carlo repetitions.

Supplementary Materials

Data

We use freely available data from Eurostat on population statistics and asylum applicants and data from OECD Economic Outlook (8). The choice of the sample period was guided by the availability of the Eurostat data on annual asylum applications in 15 Western European countries from 1985 to 2015 at the time of this writing.

Migration variables

The first variable used to evaluate international migration is the flow of asylum seekers, which is measured by the first asylum applications pending at the end of the year. Asylum seekers are temporary migrants who are waiting for a decision on their asylum claims. While their application is being processed, asylum seekers have access to public services, such as education and health, and they receive conditional social transfers, but they are generally not allowed to work.

Second, we use the net flow of migrants, which is measured by the crude rate of net migration plus a statistical adjustment. Given that the growth of a country's population is the sum of natural increases (births minus deaths) and net migration (the total number of arrivals minus the departures of foreigners and nationals), the net migration data are produced by Eurostat as the difference between the total population change and the natural change. The population statistics do not include persons who are temporarily staying in the country. Short-term movements for tourism or business are excluded. More importantly, foreigners who are applying for a first residence permit are not included.

Thus, asylum seekers are not considered to be a part of the "usual resident population" and they are not included in the population statistics that are used by Eurostat to produce net migration data. The Eurostat annual data on asylum applications cover persons whose claim has not been definitively evaluated at the end of the year. Therefore, for a given year, an asylum applicant that is computed in our flow of asylum seekers variable is not counted by Eurostat as a permanent migrant, and he or she is not included in our

net flow of migrants variable for this given year.

Economic and fiscal variables

The economic and fiscal data are computed by using the following series codes from the OECD Economic Outlook database (8).

UNR: Unemployment rate

GDP: Gross domestic product, value, at market prices

PGDP: Gross domestic product, deflator

CGAA: Government final consumption expenditure

PCG: Government final consumption expenditure, deflator

IGAA: Government fixed capital formation.

PIGAA: Government fixed capital formation, deflator

SSPG: Social security benefits paid by the general government

SSRG: Social security contribution received by the general government

TIND: Taxes on production and imports

TOCR: Other current receipts, general government

TY: Total direct taxes

YPEPG: Property income paid by the government

YPERG: Property income received by the government

YPOTG: Other current outlays, general government.

The variables of interest are computed as follows :

$$\text{Real GDP} = \text{GDP}/\text{PGDP}$$

$$\text{Real public spending} = \text{CGAA}/\text{PCG} + \text{IGAA}/\text{PIGAA}$$

$$\text{Revenues} = \text{TIND} + \text{TY} + \text{SSRG} + \text{YPERG} + \text{TOCR}$$

$$\text{Transfers} = \text{SSPG} + \text{YPEPG} + \text{YPOTG}$$

$$\text{Real net taxes} = (\text{Revenues} - \text{Transfers})/\text{PGDP}$$

Note that these variables of interest are expressed in per capita terms by using the average population (*AVG*) from Eurostat.

We use annual data similar to (12, 13, 15), who emphasized their advantages in fiscal studies compared with quarterly data used in (11, 14, 16). The first reason for this use is that fiscal changes are generally decided in the Budget Act before the new fiscal year (while sometimes these changes are decided for mid-year budget revisions, but they are almost never determined quarterly); therefore, the estimated shocks from annual data can be considered good approximations of actual shocks (15). Second, potential issues that relate to the anticipation of fiscal policy changes can be neglected with annual data. Third, for many countries, the data on fiscal variables (and also international migration) are not generally available quarterly; for these countries, quarterly series are often interpolated from annual data.

Methods

Estimation methodology

First, we describe our estimation methodology. To obtain an adequate sample size by using annual data, similar to (12, 13, 15), our empirical analysis is based on a panel vector autoregressive (VAR) model with the following specification:

$$\begin{aligned} Z_{it} &= A(L)Z_{it} + v_i + \lambda_i t + f_t + \varepsilon_{it} \\ &= \sum_{s=1}^p A_s Z_{it-s} + v_i + \varepsilon_{it} \quad i = 1, \dots, N \text{ and } t = 1, \dots, T \end{aligned} \quad (1)$$

where $Z_{it} = (z_{it}^1, \dots, z_{it}^K)'$ is a $(K \times 1)$ vector of endogenous variables; A_s are the fixed $(K \times K)$ coefficient matrices of lag operator polynomial $A(L)$; $v_i = (v_i^1, \dots, v_i^K)'$ is a fixed $(K \times 1)$ vector of individual effects; and $\varepsilon_{it} = (\varepsilon_{it}^1, \dots, \varepsilon_{it}^K)'$ is the $(K \times 1)$ vector of residuals that satisfy $E(\varepsilon_{it}) = 0$, $E(\varepsilon_{it}\varepsilon_{it}') = \Omega$ for all i and t , and $E(\varepsilon_{it}\varepsilon_{j\tau}') = 0$ for $i \neq j$ or $t \neq \tau$.

In the dynamic panel models, the fixed effects estimator suffers from the well-known Nickell bias (32) for a finite time dimension T even when the cross-sectional dimension N is large. We therefore estimate our panel VAR (with $N = 15$ and $T = 31$) by using the bias-corrected fixed-effects technique of (33). This approach is suitable when T and N have comparable sizes, i.e., when $0 < \lim N/T < \infty$ (as here), and may be understood

as an implementable version of Kiviet’s bias-corrected fixed-effects estimator (34). In particular, the technique of (33) can be applicable to higher order VAR models by using the fact that any higher order VAR process can be rewritten in first-order VAR form, by imposing blockwise zero and identity restrictions (33, 35). Moreover, as shown in (33), the efficiency of a bias-corrected estimator often dominates that of the GMM estimator, in terms of the root mean squared error.

Estimating the model in panel form requires to assume cross-country homogeneity in the relations among the variables. To allow for this homogenous assumption, we rely on the 15 Western European countries that have many similarities. We also include country-fixed effects and country-specific time trends. Moreover, we remove cross-country contemporaneous interdependence by including year-specific effects.

Based on the Akaike information criterion (AIC) and Bayesian information criterion (BIC), we set the lag length of the system to two so that there is any serial correlation in the residuals. The results are robust to alternative lag lengths greater than two.

Replication of the literature on fiscal studies

As a first step, we ignore the migration variables and set up a model that aims at replicating the recent findings of the literature. To this end, we first consider a baseline structural VAR that consists of a set of endogenous variables $Z_{it} = (g_{it}, nt_{it}, y_{it}, u_{it})'$, where g is the real public spending per capita, nt is the real net taxes per capita, y is the real GDP per capita, and u is the unemployment rate. All variables are in natural logarithms. After detrending the variables (with country-specific linear trend), many panel unit root tests fail to accept the null hypothesis of the unit root. Therefore, we can set a VAR model that considers all the variables in levels while controlling for country heterogeneity (by using country-specific effects and country-specific time trends) and cross-country interdependence (by using year-specific effects). Following the literature on the fiscal multiplier that uses annual data (12, 13, 15), our identification is based on a lower-triangular Cholesky

decomposition according to the following structural VAR:

$$B_0 \begin{pmatrix} g_{it} \\ nt_{it} \\ y_{it} \\ u_{it} \end{pmatrix} = B(L) \begin{pmatrix} g_{it-1} \\ nt_{it-1} \\ y_{it-1} \\ u_{it-1} \end{pmatrix} + B_0 v_i + \begin{pmatrix} e_{it}^g \\ e_{it}^{nt} \\ e_{it}^y \\ e_{it}^u \end{pmatrix}, \quad (2)$$

$$\text{where } B_0 = \begin{pmatrix} -\beta^{gg} & 0 & 0 & 0 \\ -\beta^{ntg} & -\beta^{ntnt} & 0 & 0 \\ -\beta^{yg} & -\beta^{ynt} & -\beta^{yy} & 0 \\ -\beta^{ug} & -\beta^{unt} & -\beta^{uy} & -\beta^{uu} \end{pmatrix},$$

where $e_{it} = (e_{it}^g, e_{it}^{nt}, e_{it}^y, e_{it}^u)'$ stands for the vector of structural shocks that are mutually uncorrelated and $B(L)$ is a matrix polynomial in the lag operator L .

The identification assumption in equation (2) indicates that the variables listed earlier in the VAR order can impact other variables contemporaneously, while the variables listed later can impact the variables listed earlier only with a lag. Therefore, in our identification, public spending is allowed to contemporaneously impact net taxes, output and the unemployment rate, and responds to these variables only with a lag. This assumption is justified by the fact that changes in expenditures are generally decided in the Budget Act presented before the new fiscal year, while adjustments during the current year are negligible (12, 13, 15). Net taxes are allowed to contemporaneously influence output and the unemployment rate and may respond to output and the unemployment rate only with a lag. Net taxes include some components that are cyclically sensitive, but these components are discretionary and under the government's control, which implies that they are also determined in the Budget Act before the new fiscal year. Finally, because productivity shocks can contemporaneously impact unemployment, the output is listed before the unemployment rate, which is ordered last in the system.

The fiscal balance is expressed as a share of GDP: $(NT_t - G_t)/Y_t$, where Y , G and NT are the real GDP per capita, real public spending per capita and real net taxes per

capita, respectively. Its response is computed as follows:

$$\frac{NT_t}{Y_t} [\hat{NT} - \hat{Y}_t] - \frac{G_t}{Y_t} [\hat{G}_t - \hat{Y}_t],$$

where \hat{Y} , \hat{G} and \hat{NT} are the impulse responses of Y , G and NT respectively, and where the ratios G_t/Y_t and NT_t/Y_t are approximated by the overall sample mean.

For the baseline model, Fig. S2 displays the impulse responses to public spending strongly increases and net tax cut, while Table S2 (panel *a*) reports the effects for specific periods after the shock. The size of both fiscal shocks is equal to 1 percent of GDP. For per capita GDP, spending and net taxes, the responses are expressed in percentage change; for the unemployment rate and fiscal balance/GDP, the responses are in percentage point change. The dashed lines give the 90 percent confidence intervals that are generated by 5,000 Monte Carlo repetitions.

As shown in Fig. S2 and Table S2 (panel *a*), in response to its own shock, public spending strongly increases by 3.88 percent on impact (which is the peak), and it dies out slowly. GDP increases significantly by 2.20 percent on impact (the peak), and the response remains significant until the fourth year after the shock. In response to a spending shock, the unemployment rate decreases significantly by -0.08 percentage points on impact, and the response becomes insignificant from the first year after the shock. Net taxes increase significantly by 2.54 percent on impact and by 2.31 percent after one year and respond significantly until the third year after the shock. As a result, the fiscal balance deteriorates significantly for three years and by -0.36 percent of GDP on impact (the peak).

Net taxes also respond strongly and persistently to their own shock by -4.91 percent on impact (the peak). In response to a cut in net taxes, public spending falls significantly and persistently from the first year after the shock by -0.55 percent and peaks at -1.57 percent the third year after the shock. It should be noted that a cut in net taxes leads to a significant decrease in GDP by -0.53 percent on impact and by -1.08 at the peak (after two years), as well as a significant increase in the unemployment rate by 0.19 percentage points on impact and by 0.36 percentage points at the peak (after two years). These

results may appear to be counter-intuitive but were nevertheless found by (30) for the US economy during recessions. (36) provide a comprehensive discussion of the possible underlying mechanisms. We note that the recent SVAR literature (see, e.g., 14, 15, 30) that studies the macroeconomic effects of fiscal policies focuses on government spending rather than on net taxes. Finally, in response to a cut in net taxes, the fiscal balance deteriorates significantly and persistently for four years and by -1.03 percent of GDP on impact (the peak).

Our results are robust to alternative specifications and in particular when considering cyclically adjusted net taxes. Because cyclically sensitive expenditure components are present in net taxes, some authors consider cyclically adjusted net taxes rather than unadjusted net taxes (12, 13, 15). We have re-estimated our VAR using cyclically adjusted net taxes as a robustness check. Cyclically adjusted net taxes are built by using the elasticity of each component of the revenues (direct taxes, indirect taxes, social security contributions received, property income received, and other current receipts) and transfers (social security benefits paid, property income paid, and other current outlays) with respect to output to purge each of these components of its cyclical part. Therefore, for each component j , we compute $R_{jt}^{CA} = R_{jt}(Y_t^T/Y_t)^{a_j}$ where R_{jt} is the unadjusted (or non cyclically adjusted) item, R_{jt}^{CA} is the cyclically adjusted item, Y_t^T is the trend in the real GDP, Y_t is the real GDP, and a_j is the elasticity of item j to the real GDP. The trend in the real GDP is computed separately for each country in the sample, by regressing the log of the real GDP on a constant, a linear trend and a quadratic trend. Elasticities a_j are country-specific and are taken from (37) to whom we refer the reader for more details on the construction of the elasticities. Using cyclically adjusted net taxes (with a country-specific cyclical adjustment) allows us to account for the cross-country heterogeneity in the response of net taxes to output variations and to directly capture the reaction of the fiscal authorities to expenditure shocks (12, 15).

With cyclically adjusted net taxes in the VAR, the response of unadjusted net taxes is $\hat{NT} = \hat{NT}^{CA} + \eta\hat{Y}_t$, where \hat{NT}^{CA} is the impulse response of cyclically adjusted net taxes, and η is the elasticity of net taxes with respect to the real GDP. The value of η is

set to 2.1, which is the average elasticity of net taxes with respect to the real GDP that is used in (12, 13, 15). Therefore, with cyclically adjusted net taxes, the response of the fiscal balance to GDP ratio is given by:

$$\frac{NT_t}{Y_t} \left[\left(\hat{NT}^{CA} + \eta \hat{Y}_t \right) - \hat{Y}_t \right] - \frac{G_t}{Y_t} \left[\hat{G}_t - \hat{Y}_t \right].$$

The impulse response functions that use cyclically adjusted net taxes are reported in Fig. S3 and Table S2 (panel *b*). Similar to (15), we find that using cyclically adjusted net taxes instead of unadjusted items gives roughly the same impulse responses for all variables except net taxes (which was expected). In Fig. S2 and Table S2 (panel *a*), unadjusted net taxes respond positively to expenditure shock, because the positive effect on the output is transmitted to the cyclical component of net taxes. Conversely, Fig. S3 and Table S2 (panel *b*) report the negative response of cyclically adjusted net taxes to an expenditure shock. Notice that (15) find the same result, which they interpret as an attempt of the fiscal authorities to accompany expenditure increases with discretionary tax cuts to further stimulate the economy.

It is worth noticing that elasticities of net taxes (a_j and η) are estimated; therefore cyclically-adjusted net taxes are less precisely measured. Because we are mainly interested in estimating the responses to migration shocks and because using cyclically adjusted net taxes is found to be immaterial, we thus use unadjusted net taxes in our extended VAR to avoid potential bias that might be induced by using estimated elasticities.

Including migration variables

To compute the responses to migration shocks, we consider an extended structural VAR that includes the net flow of migrants and the flow of asylum seekers as follows:

$$B_0 \begin{pmatrix} as_{it} \\ m_{it} \\ g_{it} \\ nt_{it} \\ y_{it} \\ u_{it} \end{pmatrix} = B(L) \begin{pmatrix} as_{it-1} \\ m_{it-1} \\ g_{it-1} \\ nt_{it-1} \\ y_{it-1} \\ u_{it-1} \end{pmatrix} + B_0 v_i + \begin{pmatrix} e_{it}^{as} \\ e_{it}^m \\ e_{it}^g \\ e_{it}^{nt} \\ e_{it}^y \\ e_{it}^u \end{pmatrix} \quad (3)$$

$$\text{where } B_0 = \begin{pmatrix} -\beta^{asas} & 0 & 0 & 0 & 0 & 0 \\ -\beta^{mas} & -\beta^{mm} & 0 & 0 & 0 & 0 \\ -\beta^{gas} & -\beta^{gm} & -\beta^{gg} & 0 & 0 & 0 \\ -\beta^{ntas} & -\beta^{ntm} & -\beta^{ntg} & -\beta^{ntnt} & 0 & 0 \\ -\beta^{yas} & -\beta^{ym} & -\beta^{yg} & -\beta^{ynt} & -\beta^{yy} & 0 \\ -\beta^{uas} & -\beta^{um} & -\beta^{ug} & -\beta^{unt} & -\beta^{uy} & -\beta^{uu} \end{pmatrix},$$

and where as_{it} and m_{it} are the logarithms of (1+ the flow of asylum seekers as a share of the population) and of (1 + the net flow of migrants as a share of the population), respectively; and e_{it}^{as} and e_{it}^m are the corresponding structural shocks.

The identification restrictions in equation (3) imply that the net flow of migrants and the flow of asylum seekers can contemporaneously impact the economic variables and respond to them only with a lag. This assumption is justified by the fact that the decision to migrate is generally made considering previous years' economic conditions. Concerning the ordering between migration variables, the flow of asylum seekers is placed before the net flow of migrants because some asylum seekers (whose application will be approved) will enter the migration statistics later. The ordering between economic variables in the extended structural VAR is the same as in the baseline model.

As reported in Fig. S4 and Table S2 (panel *c*), the economy's responses to budget and fiscal shocks are similar in the models with and without migration variables. Therefore, our model can be used to analyze the macroeconomic effects of migration shocks.

The responses to the net flow of migrants and the flow of asylum seekers are reported in Fig. 1 and Table 1. We find that both the net flow of migrants and the flow of asylum seekers have no harmful consequences on economic and fiscal outcomes. To the contrary, our results show evidence that both the net flow of migrants and the flow of asylum seekers are beneficial to the host country. The effect of a shock on the net flow of migrants is positive from the year of this shock and remains significant for at least two years. The effect of the inflow of asylum seekers takes longer to have a significant impact on the economy. Significant positive effects are observed on the GDP from three to seven years after this shock.

The dynamic responses of migrations to their own shocks are displayed in Fig. 2 and Table 2. Both the net flow of migrants and the flow of asylum seekers respond with some degree of persistence to their own shocks, with significant responses during many years after the shock. More importantly, the net flow of migrants responds positively and significantly to an asylum shock between two and five years after the shock, which reflects the fact that some asylum seekers become permanent migrants.

Relation to other studies

The existing studies on the fiscal contribution of international migration are based on approaches that ignore the economic interactions and/or rely heavily on assumptions and modeling choices (see (1) and (29) for comprehensive reviews). We use in this paper a purely data-based approach that differs substantially from the approaches that have been previously used to assess immigration's fiscal effects.

Comparing estimates across studies is difficult because of the differences in the considered countries and periods considered and the differences in methodological approaches. Importantly, most previous studies of the fiscal effect of immigration consider all immigrants regardless of their period of arrival, i.e., the immigrant population rather than the flow of migrants. The notable exception is (2) who consider the immigrants who arrived in the United Kingdom between 2001 and 2011. According to (1), for the United States, static accounting studies that consider the immigrant population in 1993 find that the

annual fiscal contribution is between -0.2 percent and +0.4 percent of GDP. Dynamic accounting studies (e.g., (26)) find a fiscal effect between -0.8 percent and 1.5 percent of GDP depending on the assumptions. Note that these estimates are taken from (1), who concludes that the fiscal effect of immigration is relatively small, within the range of ± 1 percent of GDP.

To compare the magnitude of our effects with the results derived from other approaches, we must consider the fact that the dynamic responses of the fiscal variables to a migration shock consider the dynamic response of migration to its own shock. To make a relevant comparison, we have to compute an average response by using the cumulative response over time. For instance, we computed the ratio of the cumulative response of the fiscal balance to GDP ratio to migration shock with respect to the cumulative response of migration to its own shock over 10 years. This value accounts for the response of asylum seeker flow to a net migration shock if these asylum seekers become permanent migrants. We obtained that a shock to the net flow of migrants that amounts to one percent of the population improves the fiscal balance to GDP ratio by 0.29 percent points and the GDP per capita by 4.35 percent over 10 years. These estimated effects are close to the values obtained in (2) and (5).

Using a static accounting approach, (2) investigate the net fiscal effect of immigration on the UK economy from 1995-2011. For comparability, we converted their results, reported in their Table 6, to a percentage of GDP by using national accounts for 2011. For their baseline scenario, which is according to the authors “likely to underestimate immigrants’ net fiscal contributions”, the recently arrived immigrants, which represent 7 percent of the UK population, have induced a positive fiscal contribution of 2 percent of GDP. The implied elasticity is thus close to our estimate. Interestingly, they find that the net fiscal contribution of both immigrant and native population stocks are negative, the former being larger in magnitude than the latter.

Using gravity-based predictors, (5) study the relation between immigration and income per person across 188 countries around 2000. They find that “a one percentage point increase in the immigration share in the population increases income per person by

about 6%”, which is slightly larger than our estimate for Western European countries.

The economic and fiscal contribution of a given asylum seeker is difficult to evaluate directly because an asylum shock induces a dynamic response of the net flow of migrants and the flow of asylum-seekers over time. Nevertheless, we find that as asylum seekers become permanent residents, their macroeconomic effects are positive.

Supplementary Results

We now provide various robustness checks of our results in many dimensions including sensitivity to alternative identification, ignoring common time effects and changing the sample period.

Alternative ordering

We begin our robustness analysis by checking the sensitivity to alternative ordering in the Cholesky decomposition. In this alternative decomposition, we place the net flow of migrants before the flow of asylum seekers but leave the ordering of the other variables unaltered. This alternative ordering is justified by the idea that migration networks may facilitate asylum applications and contemporary influence the flow of asylum seekers. For this alternative ordering, Table S3 (panel *a*) reports the impulse responses to shock on the net flow of migrants and the flow of asylum seekers for specific periods after the shock. The dynamic effects are similar to the results reported in Table 1.

Ignoring common time effects

In our main estimations, we include common time effects to account for cross-country contemporaneous interdependence. Using common time effects may nevertheless absorb the cross-country co-movement in structural shocks (12). Therefore, as a further robustness check, we eliminate the common time effects. The results shown in Table S3 (panel *b*) indicate that ignoring common time effects in the estimation does not alter our findings, except that there is an increase in the significance of the responses to a shock on the flow of asylum seekers. This result may reflect the cross-country co-movement in asylum

seekers' shocks among EU countries.

Period heterogeneity

To investigate the time homogeneity assumption, we check whether our results differ across time. More precisely, we check whether our results hold when the recent “migrant crisis” that started with the Arab Spring is excluded. Asylum applications to Western European countries have increased steadily since 2011 and reached a peak in 2015. In addition to this change in scale, the recent period is also characterized by a change in the distribution by country of origin of asylum seekers. In particular, according to Eurostat data, Syrian asylum seekers accounted for 18 percent of the total applications, on average, from 2011-2015, whereas they represented 1 percent on average during the previous decade. This increase was compensated by a decline in the share of applications that came from other Asian countries except for Iraq and Afghanistan. Conversely, the share of applications that were made by citizens of Central and Eastern European countries (which were not member of the European Union) has been stable since 2000 and accounts for less than 20 percent of the total applications.

Thus, we estimate our model for the sub-period from 1985 to 2010. As shown in Table S3 (panel *c*), the dynamic responses to a shock on the net flow of migrants are similar to the results obtained above, while the responses to asylum demand shock become nonsignificant. These nonsignificant responses to asylum shock may be explained by the fact that the magnitude of asylum seeker flows was, on average, smaller from 1985 to 2010.

Using first differences

As mentioned above, there is some statistical evidence of trend-stationarity of our series. However, for GDP, spending and net taxes, one cannot strongly exclude the presence of a unit root.

To check the relatively short duration of GDP and fiscal responses to migration or asylum shocks, we estimate a new VAR model with the first differences of the logarithms of

per capita GDP, spending and net taxes. Cointegration relationships cannot be excluded and one candidate is the relation between net taxes and spending, under the assumption that the two variables follow a unit root process. Therefore, as in (11), to account for sustainability criteria imposed on fiscal policy (what are particularly relevant in Europe), we impose a co-integration relationship between spending and taxes so that the difference between the log of net taxes and the log of public spending is stationary that is given by their difference $(nt_t - g_t)$, i.e., the stationarity of the logarithm of the net tax to spending ratio. The other variables enter in log levels, because they are strongly not integrated (using the first difference of an integrated variable may lead to a loss of information when a cointegration relation exists). Therefore, the VAR in this new specification consists of the following $(as_t, m_t, \Delta g_t, \Delta nt_t, \Delta y_t, u_t)'$ and includes the error correction $nt_{t-1} - g_{t-1}$.

The results are reported in Table S3 (panel *d*). To be consistent with the previous presentations of the results, we report the cumulative responses to shocks of series that enter in first difference (GDP, spending and net taxes). The responses to a net migration shock in this specification are very similar to our previous results, with a slightly larger response in the fiscal balance. As above, the effects of the asylum seekers' shock are significant with a delay, but are more persistent for GDP, spending and net taxes.

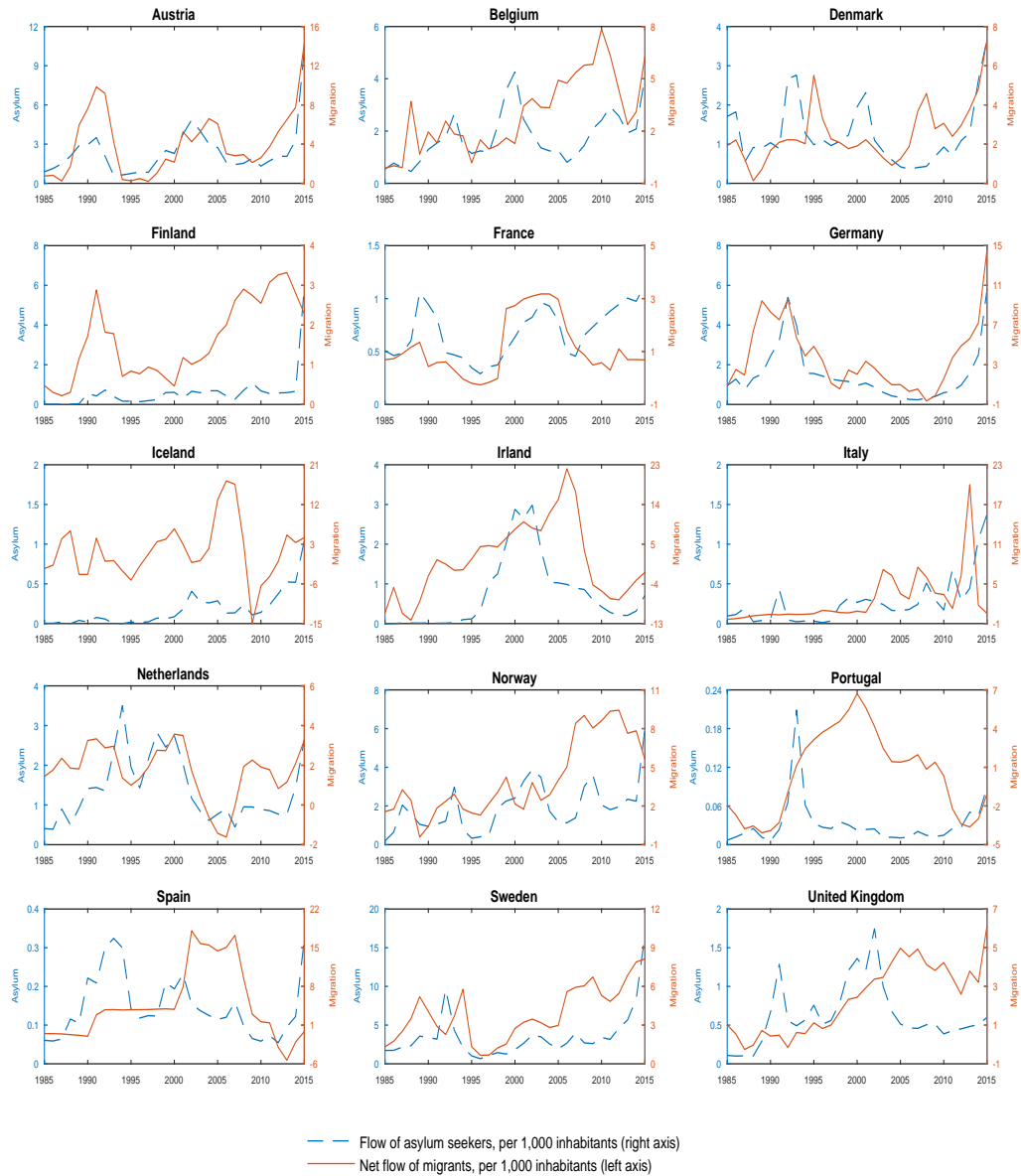


Figure 3: Net Flow of Migrants and Flow of Asylum Seekers in 15 European Countries, 1985-2015, annual data

Source: Authors' computations based on data from Eurostat (<http://ec.europa.eu/eurostat/data/database>).

Table 3: **Summary Statistics, averages per country over the sample period (1985-2015)**

Country	Flow of asylum seekers (per 1,000)	Net flow of migrants (per 1,000)	GDP per capita (PPP, 2010 US\$)	Unemployment rate (in %)	Spending per capita (PPP, 2010 US\$)	Net Taxes per capita (PPP, 2010 US\$)	Fiscal Balance to GDP ratio (in %)
Austria	2.35	4.06	36233	4.31	8124	6701	-4.00
Belgium	1.76	2.93	34988	8.26	8506	7126	-4.33
Denmark	1.27	2.52	39218	6.02	11014	9815	-3.19
Finland	0.60	1.61	32723	9.23	8494	7787	-2.18
France	0.68	1.14	32595	8.79	8741	6776	-5.99
Germany	1.51	3.79	35210	7.38	7335	6251	-3.11
Iceland	0.17	1.46	33951	3.64	8926	5841	-8.98
Ireland	0.74	1.42	34301	10.8	6739	5447	-4.05
Italy	0.27	2.56	32910	9.43	7249	4935	-7.33
Netherlands	1.38	1.73	38244	6.27	10377	8323	-5.44
Norway	1.92	4.07	51031	3.76	12495	17791	9.69
Portugal	0.03	0.47	23705	7.78	5288	3397	-7.93
Spain	0.15	4.56	27641	15.8	6049	4626	-5.20
Sweden	3.54	3.86	35339	6.94	10581	9720	-2.64
United Kingdom	0.63	2.36	31565	7.36	6813	5688	-3.48
All countries	1.13	2.57	34644	7.71	8449	7348	-3.88

Source: Authors' computations based on data from Eurostat (<http://ec.europa.eu/eurostat/data/database>) and and OECD Economic Outlook database (<https://stats.oecd.org/index.aspx?DataSetCode=E0>).

Table 4: Responses to Fiscal Shocks

<i>(a) Baseline Model</i>					
	Year 0	Year 1	Year 2	Year 5	Year 10
<i>Spending increase</i>					
Spending per capita	3.88*	3.27*	2.29*	0.69*	0.01
Net taxes per capita	2.54*	2.31*	1.70*	0.47	-0.13
GDP per capita	2.20*	1.79*	1.18*	0.23	-0.08
Unemployment rate	-0.08*	-0.08	-0.07	-0.03	0.01
Fiscal balance/GDP	-0.36*	-0.28*	-0.18*	-0.07	-0.03
<i>Net tax cut</i>					
Spending per capita	0.00	-0.55*	-1.25*	-1.33*	-0.11
Net taxes per capita	-4.91*	-4.84*	-4.15*	-1.66*	0.22
GDP per capita	-0.53*	-0.89*	-1.08*	-0.65*	0.12
Unemployment rate	0.19*	0.32*	0.36*	0.17*	-0.04
Fiscal balance/GDP	-1.03*	-0.89*	-0.58*	-0.03	0.08
<i>(b) Baseline Model, using Cyclically Adjusted Net Taxes</i>					
	Year 0	Year 1	Year 2	Year 5	Year 10
<i>Spending increase</i>					
Spending per capita	3.88*	3.10*	1.79*	0.57*	0.23
Cycl. adj. net taxes per capita	-2.71*	-0.60*	0.85*	0.90*	0.33
GDP per capita	2.17*	1.62*	0.82*	0.14	0.04
Unemployment rate	-0.06*	-0.04	-0.01	0.01	-0.01
Fiscal balance/GDP	-0.51*	-0.14	0.11	0.10	0.03
<i>Net tax cut</i>					
Spending per capita	0.00	-0.48*	-1.08*	-1.18*	-0.45*
Cycl. adj. net taxes per capita	-4.90*	-4.02*	-2.83*	-1.55*	-0.59*
GDP per capita	0.07	-0.31*	-0.64*	-0.57*	-0.10
Unemployment rate	0.10*	0.17*	0.21*	0.14*	0.01
Fiscal balance/GDP	-0.96*	-0.84*	-0.61*	-0.29*	-0.05
<i>(c) Model including Migration Variables</i>					
	Year 0	Year 1	Year 2	Year 5	Year 10
<i>Spending increase</i>					
Spending per capita	3.88*	3.15*	2.11*	0.60*	0.04
Net taxes per capita	2.31*	2.00*	1.44*	0.44	-0.07
GDP per capita	2.21*	1.72*	1.07*	0.19	-0.06
Unemployment rate	-0.04	-0.03	-0.03	-0.03	0.01
Fiscal balance/GDP	-0.41*	-0.31*	-0.19*	-0.06	-0.03
<i>Net tax cut</i>					
Spending per capita	0.00	-0.47*	-1.14*	-1.34*	-0.18
Net taxes per capita	-4.91*	-4.70*	-4.06*	-1.68*	0.07
GDP per capita	-0.58*	-0.91*	-1.04*	-0.68*	0.04
Unemployment rate	0.14*	0.27*	0.32*	0.17*	-0.02
Fiscal balance/GDP	-1.03*	-0.89*	-0.59*	-0.03	0.06

Notes. Year 0 stands for the year of the shock. The size of both spending and tax shocks is equal to 1 percent of GDP. * denotes statistical significance at the 10% level. For per capita GDP, spending and net taxes, the responses are expressed in percentage change; for the unemployment rate and fiscal balance/GDP, the responses are in percentage points change.

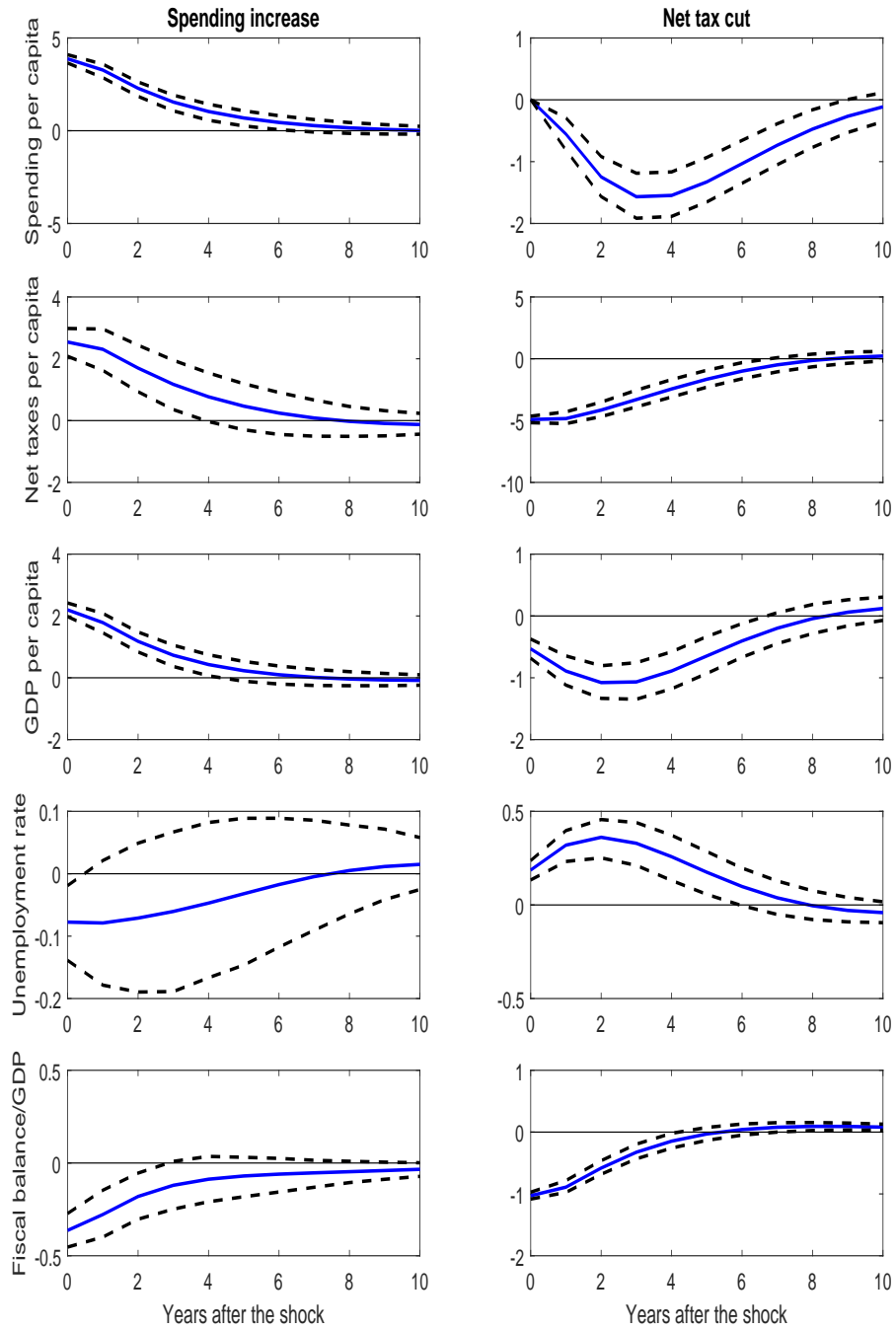


Figure 4: Responses to Fiscal Shocks in Baseline Model

Year 0 stands for the year of the shock. The size of both spending and tax shocks is equal to 1 percent of GDP. For per capita GDP, spending and net taxes, the responses are expressed in percentage change; for the unemployment rate and fiscal balance/GDP, the responses are in percentage points change. The solid line gives the estimated impulse responses. Dashed lines give the 90% confidence intervals that are generated by 5,000 Monte Carlo repetitions.

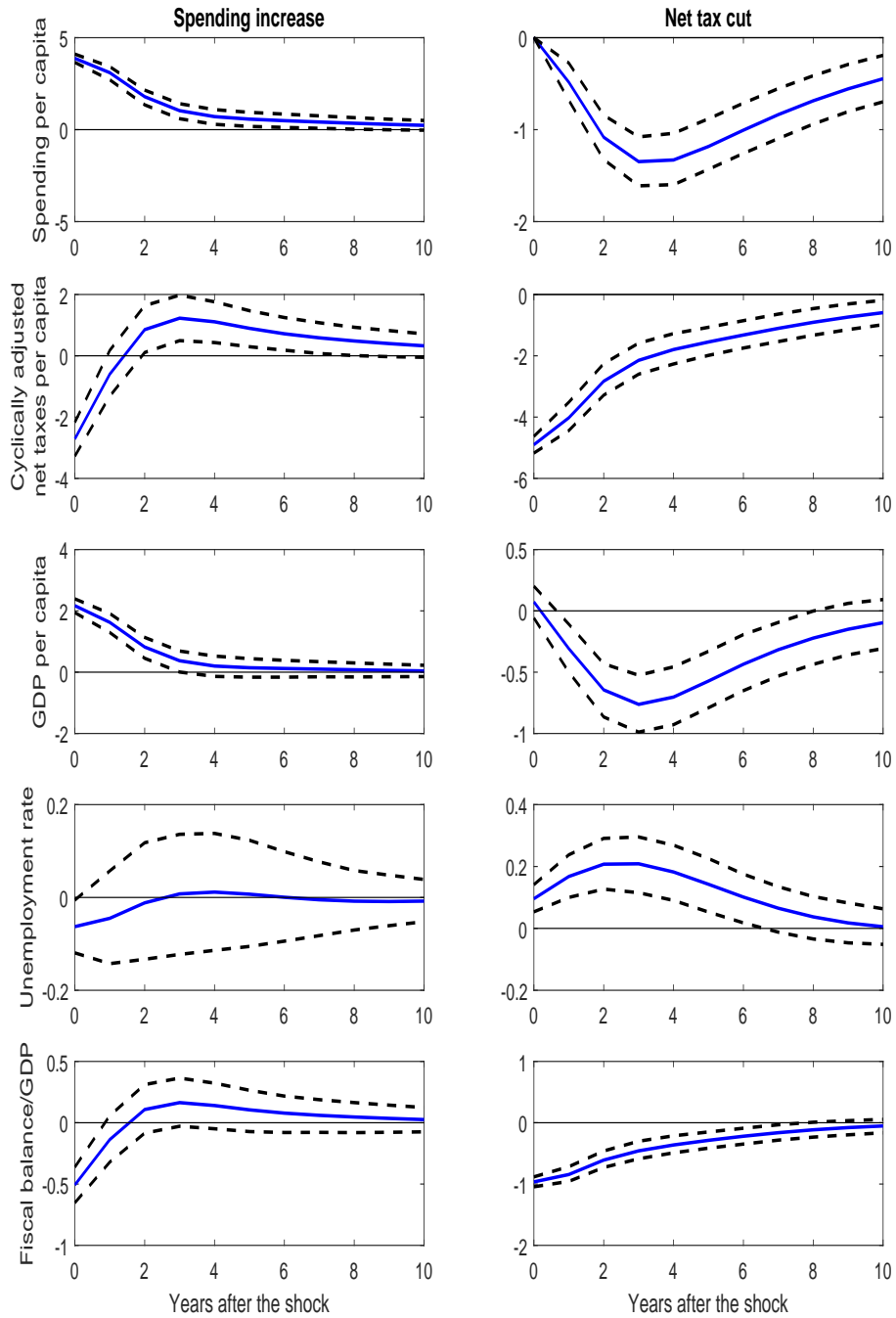


Figure 5: Responses to Fiscal Shocks in Baseline Model, using Cyclically-Adjusted Net Taxes

Year 0 stands for the year of the shock. The size of both spending and tax shocks is equal to 1 percent of GDP. For per capita GDP, spending and net taxes, the responses are expressed in percentage change; for the unemployment rate and fiscal balance/GDP, the responses are in percentage points change. The solid line gives the estimated impulse responses. The dashed lines give the 90% confidence intervals that are generated by 5,000 Monte Carlo repetitions.

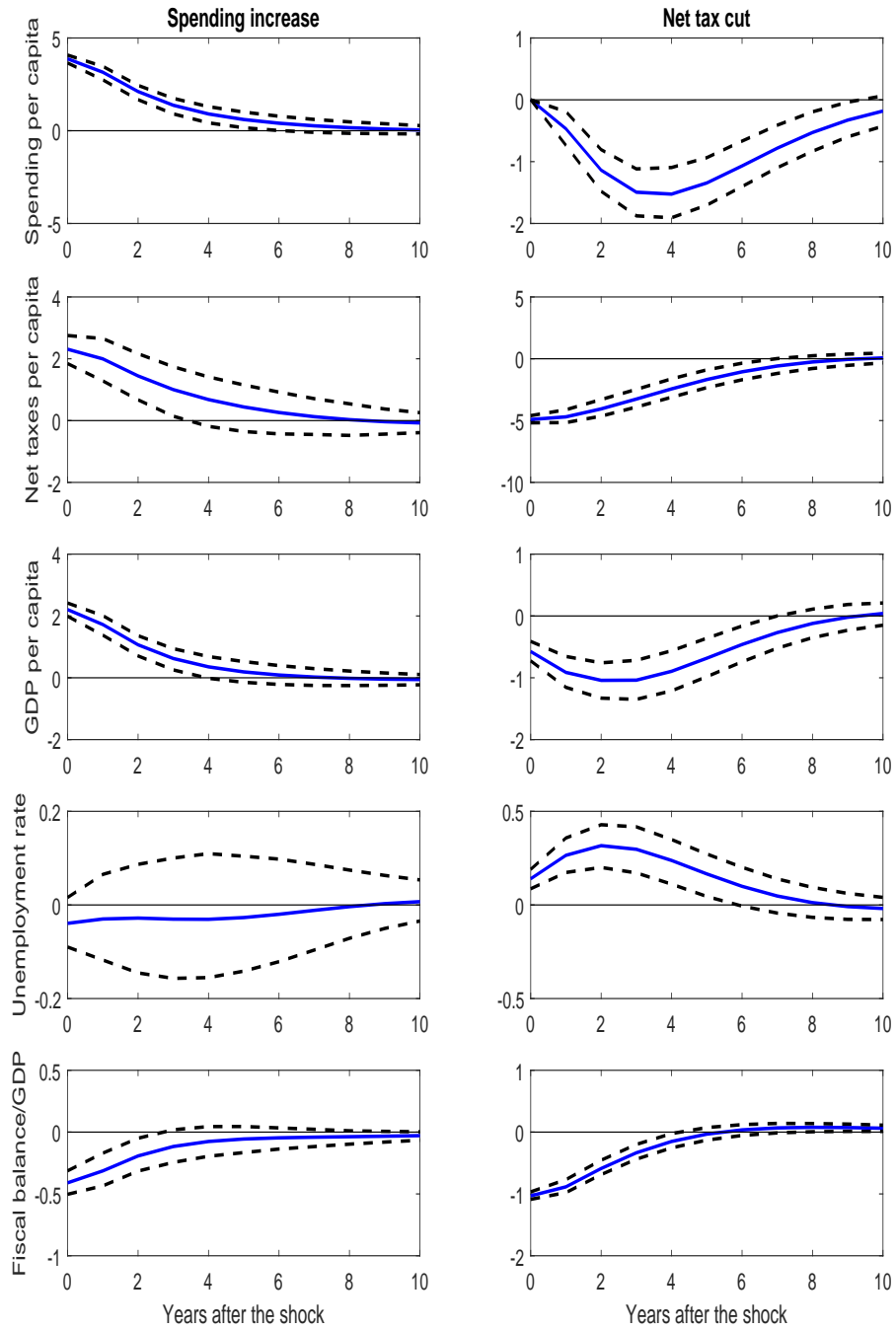


Figure 6: Responses to Fiscal Shocks in Model including Migration Variables

Year 0 stands for the year of the shock. The size of both spending and tax shocks is equal to 1 percent of GDP. For per capita GDP, spending and net taxes, the responses are expressed in percentage change; for the unemployment rate and fiscal balance/GDP, the responses are in percentage points change. The solid line gives the estimated impulse responses. The dashed lines give the 90% confidence intervals that are generated by 5,000 Monte Carlo repetitions.

Table 5: Economic and Fiscal Responses to Migration Shocks, Robustness Analysis

<i>(a) Net flow of migrants before flow of asylum seekers</i>					
	Year 0	Year 1	Year 2	Year 5	Year 10
<i>Increase in the flow of asylum seekers</i>					
Spending per capita	0.20	0.19	0.17	0.49	0.24
Net taxes per capita	0.33	0.32	0.75	1.25*	0.23
GDP per capita	0.22	0.38	0.45	0.56*	0.14
Unemployment rate	-0.05	-0.10	-0.17	-0.20*	-0.02
Fiscal balance/GDP	0.03	0.04	0.13	0.16	-0.01
<i>Increase in the net flow of migrants</i>					
Spending per capita	0.30*	0.50*	0.61*	0.34*	-0.01
Net taxes per capita	0.86*	1.12*	0.97*	0.23	-0.08
GDP per capita	0.18*	0.25*	0.33*	0.14	-0.04
Unemployment rate	-0.12*	-0.16*	-0.15*	-0.04	0.01
Fiscal balance/GDP	0.11*	0.11*	0.06	-0.03	-0.02
<i>(b) Ignoring common time effects</i>					
	Year 0	Year 1	Year 2	Year 5	Year 10
<i>Increase in the flow of asylum seekers</i>					
Spending per capita	0.06	0.31	0.70*	1.30*	0.70*
Net Taxes per capita	0.24	-0.11	0.56	2.64*	0.93*
GDP per capita	0.07	0.14	0.60	1.39*	0.56*
Unemployment rate	-0.06	-0.05	-0.05	-0.17	-0.05
Fiscal balance/GDP	0.04	-0.10	-0.03	0.28*	0.04
<i>Increase in the net flow of migrants</i>					
Spending per capita	0.30*	0.53*	0.69*	0.46*	0.00
Net taxes per capita	1.17*	1.69*	1.42*	0.15	-0.04
GDP per capita	0.26*	0.40*	0.47*	0.16	-0.03
Unemployment rate	-0.14*	-0.20*	-0.19*	-0.02	0.02
Fiscal balance/GDP	0.17*	0.23*	0.14*	-0.08	-0.01
<i>(c) Period 1985-2010</i>					
	Year 0	Year 1	Year 2	Year 5	Year 10
<i>Increase in the flow of asylum seekers</i>					
Spending per capita	0.10	0.24	0.27	0.33	0.14
Net taxes per capita	0.49	0.72	1.16	0.81	0.25
GDP per capita	0.44	0.54	0.60	0.46	0.13
Unemployment rate	-0.09	-0.15	-0.17	-0.06	-0.02
Fiscal balance/GDP	0.10	0.11	0.20	0.10	0.02
<i>Increase in the net flow of migrants</i>					
Spending per capita	0.31*	0.60*	0.54*	-0.13	0.04
Net taxes per capita	1.08*	1.39*	0.93*	-0.35	0.06
GDP per capita	0.22*	0.32*	0.31*	-0.08	0.02
Unemployment rate	-0.15*	-0.19*	-0.12*	0.07*	-0.01
Fiscal balance/GDP	0.15*	0.15*	0.07	-0.04	0.00
<i>(d) Using first difference</i>					
	Year 0	Year 1	Year 2	Year 5	Year 10
<i>Increase in the flow of asylum seekers</i>					
Spending per capita	0.16	0.53	0.80*	1.09*	1.18*
Net taxes per capita	0.05	-0.22	0.56	2.38*	1.11*
GDP per capita	0.27	0.41	0.64*	1.11*	0.91*
Unemployment rate	-0.05	-0.03	-0.02	-0.14	-0.02
Fiscal balance/GDP	-0.02	-0.16	-0.06	0.26*	-0.03
<i>Increase in the net flow of migrants</i>					
Spending per capita	0.13	0.28*	0.31*	0.17	0.03
Net taxes per capita	1.01*	1.47*	1.14*	-0.08	-0.05
GDP per capita	0.17*	0.27*	0.26*	-0.02	-0.07
Unemployment rate	-0.14*	-0.21*	-0.21*	-0.03	0.03
Fiscal balance/GDP	0.18*	0.24*	0.17*	-0.06	-0.02

Notes: Year 0 stands for the year of the shock. The size of a shock on the net flow of migrants or the flow of asylum seekers is set to 1 incoming individual per thousand inhabitants. For per capita GDP, spending and net taxes, the responses are expressed in percentage change; for the unemployment rate and fiscal balance/GDP, the responses are in percentage point change. * denotes statistical significance at the 10% level.