



HAL
open science

Backtesting Expected Shortfall via Multi-Quantile Regression

Ophélie Couperier, Jérémy Leymarie

► **To cite this version:**

Ophélie Couperier, Jérémy Leymarie. Backtesting Expected Shortfall via Multi-Quantile Regression. 2019. halshs-01909375v2

HAL Id: halshs-01909375

<https://shs.hal.science/halshs-01909375v2>

Preprint submitted on 10 Jan 2019 (v2), last revised 1 Oct 2020 (v5)

HAL is a multi-disciplinary open access archive for the deposit and dissemination of scientific research documents, whether they are published or not. The documents may come from teaching and research institutions in France or abroad, or from public or private research centers.

L'archive ouverte pluridisciplinaire **HAL**, est destinée au dépôt et à la diffusion de documents scientifiques de niveau recherche, publiés ou non, émanant des établissements d'enseignement et de recherche français ou étrangers, des laboratoires publics ou privés.

Backtesting Expected Shortfall via Multi-Quantile Regression

Ophélie Couperier ^{*} Jérémy Leymarie [†]

January 10, 2019

Abstract

In this article, we propose a new approach to backtest Expected Shortfall (ES) exploiting the definition of ES as a function of Value-at-Risk (VaR). Our methodology examines jointly the validity of the VaR forecasts along the tail distribution of the risk model, and encompasses the Basel Committee recommendation of verifying quantiles at risk levels 97.5%, and 99%. We introduce four easy-to-use backtests in which we regress the ex-post losses on the VaR forecasts in a multi-quantile regression model, and test the resulting parameter estimates. Monte-Carlo simulations show that our tests are powerful to detect various model misspecifications. We apply our backtests on S&P500 returns over the period 2007-2012. Our tests clearly identify misleading ES forecasts in this period of financial turmoil. Empirical results also show that the detection abilities are higher when the evaluation procedure involves more than two quantiles, which should accordingly be taken into account in the current regulatory guidelines.

Keywords: Banking regulation; Financial risk management; Forecast evaluation; Hypothesis testing; Tail risk.

JEL classification: C12, C52, G18, G28, G32

^{*}Ensaie (CREST, UMR CNRS 9194), 5 avenue Henry Le Chatelier, 91120 Palaiseau, France. Email: ophelie.couperier@ensae.fr

[†]University of Orléans (LEO, FRE CNRS 2014), 11 rue de Blois, 45067 Orléans, France. Email: jeremy.leymarie@univ-orleans.fr. Corresponding author.

1 Introduction

In response to the market failures revealed by the global 2007-2008 financial crisis, the Basel Committee on Banking Supervision (BCBS) has adopted the Basel III accords to improve the banking sector's ability to absorb shocks arising from financial and economic stress (BCBS, 2010). Among the number of fundamental reforms that must be implemented until January 1st, 2019, the BCBS has substituted Value-at-Risk (VaR) by Expected Shortfall (ES) for the calculation of market risk capital requirements. Expected Shortfall, also referred to as Conditional VaR (CVaR) or Tail VaR (TVaR), measures the expected loss incurred on an asset portfolio given that the loss exceeds VaR. That is, if L_t is the ex-post loss on a portfolio at time t , Ω_{t-1} is the information at time $t - 1$, and $Q_{L_t}(\cdot)$ is the quantile function of L_t , the τ -level ES and VaR are given by

$$ES_t(\tau) = \mathbb{E}[L_t \mid L_t \geq VaR_t(\tau); \Omega_{t-1}], \quad (1)$$

$$VaR_t(\tau) = Q_{L_t}(\tau; \Omega_{t-1}). \quad (2)$$

As an alternative tail risk measure, ES offers a number of appealing properties that overcomes the theoretical deficiencies of the more-familiar VaR. In particular, ES is *coherent* meaning that this risk measure satisfies the properties of monotonicity, sub-additivity, homogeneity, and translational invariance (see Artzner et al., 1999, and Acerbi and Tasche, 2002). Furthermore, ES provides information about the expected size of the potential loss given that a loss bigger than VaR is experienced, while VaR only captures the likelihood of an incurred loss, and tells us nothing about tail sensitivity. In its revised standards for market risk, the BCBS emphasizes the important role of ES in place of VaR "to ensure a more prudent capture of "tail risk" and capital adequacy during periods of significant financial market stress" (BCBS, 2016, page 1).

Although ES is now considered as the new standard for risk management and regulatory

requirements, there are still outstanding questions about the modeling of ES (see for instance Taylor, 2017, and Patton et al., 2018), and the validation of the ES forecasts, or backtesting. Jorion (2006) defines backtesting as a formal statistical framework that consists in verifying if actual losses are in line with projected losses. Because ES is unobservable, its evaluation cannot be performed conventionally as a direct comparison of the observed value with its forecast, and thus generally relies on the elicibility property. A risk measure is said to be *elicitable* if there exists a loss function such that the solution of minimizing the expected loss is the risk measure itself. However, it has been established that, in contrast to VaR, ES does not meet the general property of elicibility (Gneiting, 2011), but satisfies narrower properties such as conditional elicibility (Emmer et al., 2015), or joint elicibility with VaR (Acerbi and Szekely, 2014, and Fissler and Ziegel, 2016), making its evaluation trickier than VaR in practice. Several contributions are tied to these properties, and provide backtests by making explicit reference of the ES forecasts in the testing procedure (McNeil and Frey, 2000, Acerbi and Szekely, 2014, Nolde and Ziegel, 2017, Bayer and Dimitriadis, 2018).

To circumvent the lack of elicibility of ES, several alternative testing strategies have been proposed in the literature. Following the recent classification of Kratz et al. (2018), these backtests enter the category of *implicit* backtests, as they focus on the tail distribution characteristics of the model rather than directly on ES. They generally exploit the fact that ES can be expressed as a function of VaR, which itself is elicitable. Indeed, definition of a conditional probability and a change of variable yield a useful representation of ES in terms of VaR

$$ES_t(\tau) = \frac{1}{1-\tau} \int_{\tau}^1 VaR_t(u) du. \quad (3)$$

Based on this analogy, Costanzino and Curran (2015) derive a coverage backtest for spectral risk measures such as ES in the spirit of the traditional VaR coverage backtests. Du and Escanciano (2017) define a cumulative violation process for ES as a generalization of the

violation process for VaR. Costanzino and Curran (2018) provide a Traffic Light backtest for ES which extends the so-called Traffic Light backtest for VaR. More largely, several additional techniques have been proposed to assess the whole return distribution encompassing ES as a special case (Berkowitz, 2001, Kerkhof and Melenberg, 2004, Wong, 2008). For more details on risk forecast evaluation, see the survey of Argyropoulos and Panopoulou (2016).

In this article, we also propose to exploit the relationship that prevails between ES and VaR, but contrary to the existing literature, our procedure aims at focusing on a finite number of VaRs. Definition of a Riemann sum gives a handy approximation of ES.

$$ES_t(\tau) \approx \frac{1}{p} \sum_{j=1}^p VaR_t(u_j), \quad (4)$$

where the risk level u_j is defined by $u_j = \tau + (j - 1) \frac{1-\tau}{p}$ for $j = 1, 2, \dots, p$. This representation suggests that p quantiles with appropriate risk levels would be convenient to assess the performance of an ES model. In other words, an estimate/forecast of $ES_t(\tau)$ issued from a given model could be considered valid if the sequence of $VaR_t(u_j)$ estimates/forecasts issued from the same model is itself valid. This testing strategy is fully consistent with the general recommendation of financial supervisors, indicating that "*Backtesting requirements [for ES] are based on comparing each desk's 1-day static value-at-risk measure [...] at both the 97.5th percentile and the 99th percentile*" (BCBS, 2016, page 57).

The main contribution of this article is to propose an original backtesting methodology for ES based on the theory of multi-quantile regression. This approach has many advantages. First, our procedure is flexible since the user may choose the number and values of quantiles to be investigated, and can easily focus on various aspects of the tail distribution. Second, our methodology encompasses the regulatory standards which consist in verifying the validity of two given quantiles. Finally, our testing strategy enters the category of regression-based backtests, and complements the existing literature on regression-based risk forecast evaluation proposed by Engle and Manganelli (2004), Christoffersen (2011), Bayer and Dimitriadis

(2018), among others. In addition, this original approach represents an alternative to the multiple VaR exceptions backtests of Colletaz et al. (2013), and Kratz et al. (2018).

Our procedure extends the seminal idea of Gaglianone et al. (2011) to evaluate the validity of the VaR forecasts applying quantile regression. We develop a multivariate framework focusing on multi-quantile regression to jointly assess VaR at multiple levels in the tail distribution of the risk model. We show that the parameter estimates issued from the multi-quantile regression model satisfy specific properties under the hypothesis of correct ES forecasts. We propose four backtests which correspond to various linear restrictions on these parameters. Finally, we introduce a procedure to correct the imperfect predictions relying on our multi-quantile regression framework.

We provide several Monte Carlo experiments and an empirical application using the S&P500 series. Our backtests deliver good performances to detect misleading ES forecasts. We also find that the use of asymptotic critical values is prone to substantial size distortions, and address these deficiencies via the implementation of bootstrap critical values. The latter provide satisfactory size performances regardless of the sample size, and hence should be preferred when asymptotic theory does not apply conveniently. We also show that the BCBS recommendation of verifying quantiles at coverage levels 97.5% and 99% is not always sufficient to reject the validity of the ES forecasts issued from misspecified models. We hence recommend the use of additional risk levels to improve the soundness of the decision. Finally, we show numerically that our approximation of ES as a combination of several VaRs is close to its theoretical counterpart, which strongly supports its implementation in a risk management viewpoint.

The rest of the paper is organized as follows. In Section 2, we introduce the multi-quantile regression framework. Section 3 describes the null hypotheses of our tests, the test statistics, their asymptotic properties, and the procedure to implement the bootstrap critical values.

Section 4 examines the finite sample performance of the proposed backtests through a set of Monte Carlo experiments. In Section 5, we apply our backtesting methodology on the S&P500 index, and introduce the procedure to adjust the imperfect ES forecasts. Finally, we conclude the paper in Section 6.

2 Multi-quantile regression framework

This section is devoted to the description of our proposed multi-quantile regression approach. In the first part, we discuss the usefulness of approximating ES via a finite sum of VaRs. In a second part, we describe the multi-quantile regression model that we employ in our testing strategy. Finally, the last part is devoted to the description of the estimation method, and the asymptotic theory.

2.1 ES as an approximation of VaRs

Our backtesting procedure exploits the relationship between VaR and ES. We suppose that ES can be appropriately approximated as a weighted sum of VaRs. This assertion stems from the representation of ES as the limit of a Riemann sum when the partition becomes infinitely fine.

Definition 1 (ES approximation). *Let $\tau \in]0, 1[$ denote the coverage level. The τ -level ES can be approximated by a finite Riemann sum involving p VaRs by*

$$ES_t(\tau) \approx \frac{1}{p} \sum_{j=1}^p VaR_t(u_j), \quad (5)$$

where risk levels u_j , $j = 1, 2, \dots, p$, satisfy $u_j = \tau + (j - 1) \frac{1-\tau}{p}$, and p denotes the number of subdivisions taken in the definite integral.

Our approximation of ES averages VaRs in the upper tail distribution of the risk model. The number of quantiles involved in the sum is given by p , and characterizes the approx-

imation's accuracy. In particular, $p = 1$ involves a single VaR at coverage level τ , while increasing p to infinity leads the Riemann sum to converge to the theoretical ES. In practice, p may be chosen small as the interval of the definite integral is restricted to the extreme upper tail distribution, and therefore a few quantiles are generally enough to get good approximations. Finally, the risk levels u_j , $j = 1, 2, \dots, p$, are determined so that the interval is equally partitioned between the two boundaries τ , and 1.

Our approximation is useful for several reasons. First, this simple formula is appealing in a regulatory and risk management viewpoint since the estimation of VaR is well-established compared to ES and pretty easier to compute. Secondly, and it is the purpose of this paper, the above relationship greatly simplifies the assessment of ES in practice, by focusing on the validity of several VaRs, and is more intelligible in the context of banking regulation. This approach is indeed fully consistent with the BCBS guidelines on ES assessment indicating that "*Backtesting requirements [for ES] are based on comparing each desk's 1-day static value-at-risk measure [...] at both the 97.5th percentile and the 99th percentile*" (BCBS, 2016, page 11). Finally, our validation strategy offers a certain flexibility since the risk manager or the supervisor may select both the number of probability levels and their magnitude depending on the objective in mind (regulatory guidelines, ES statistical approximation, etc.).

2.2 Multi-quantile regression model

In the sequel, we consider an asset or a portfolio, and denote by L_t the corresponding loss observed at time t , for $t = 1, 2, \dots, T$. In addition, we denote by Ω_{t-1} the information set available at time $t - 1$, with $(L_{t-1}, L_{t-2}, \dots) \subseteq \Omega_{t-1}$. Formally, the Ω_{t-1} conditional VaR at level u_j of the L_t distribution is the quantity $VaR_t(u_j)$ such that

$$\Pr(L_t \geq VaR_t(u_j) | \Omega_{t-1}) = u_j. \quad (6)$$

A VaR model is said to be correctly specified (at coverage level u_j) as soon as Equation (6) holds for all t . In practice, VaR forecasts are assessed through the evaluation of this simple equality. Given the ES approximation introduced in Definition 1, this equality may arguably be adapted for the assessment of ES models. The chief insight is to evaluate Equation (6) for a number p of risk levels as set out in Definition 1. Accordingly, one should conclude to the appropriateness of a given ES model as soon as the sequence $VaR_t(u_j)$, $t = 1, 2, \dots, T$, issued from the ES model satisfies Equation (6) jointly for $j = 1, 2, \dots, p$.

We refer to the original idea of Gaglianone et al. (2011) who derive a backtest of VaR at a single coverage level, introducing VaR as a regressor of a quantile regression model. We generalize their approach for the assessment of multiple VaRs. To do so, we regress the ex-post losses $\{L_t, t = 1, 2, \dots, T\}$ on the p VaR forecasts $\{VaR_t(u_j), t = 1, 2, \dots, T\}_{j=1,2,\dots,p}$ in a multi-quantile regression model.

$$L_t = \beta_0(u_j) + \beta_1(u_j) VaR_t(u_j) + \epsilon_{j,t} \quad \forall j = 1, 2, \dots, p, \quad (7)$$

where $\beta_0(u_j)$, and $\beta_1(u_j)$, respectively, denote the intercept and the slope parameters at level u_j , and where $\epsilon_{j,t}$ is the error term at risk level u_j and time t , such that the u_j -th conditional quantile of $\epsilon_{j,t}$ satisfies $Q_{\epsilon_{j,t}}(u_j; \Omega_{t-1}) = 0$.

This specification could be interpreted as a multi-quantile regression version of Koenker and Xiao (2002). More specifically, the representation is tightly related to the multi-quantile CaViAR model (MQ-CaViAR) proposed by White et al. (2008, 2015) which allows a joint modeling of multiple conditional VaRs. Given the multi-quantile regression model of Equation (7), the u_j -th conditional quantile of L_t is defined as

$$Q_{L_t}(u_j; \Omega_{t-1}) = \beta_0(u_j) + \beta_1(u_j) VaR_t(u_j) \quad \forall j = 1, 2, \dots, p. \quad (8)$$

This equation is central for our backtesting methodology as it establishes a direct link between the VaR forecasts (issued from the external ES model), with the true unknown condi-

tional quantile (issued from the ex-post observed losses). Our procedure consists in verifying if there exists a perfect match between $VaR_t(u_j)$ and $Q_{L_t}(u_j; \Omega_{t-1})$. Consistently with Gaglianone et al. (2011), we rely on the regression parameters, and test if the intercept parameter $\beta_0(u_j)$, and the slope parameter $\beta_1(u_j)$, are respectively equal to zero, and one, for $j = 1, 2, \dots, p$. For these parameter values, and given Definition 1, the risk model is accepted as a valid proxy of the true unknown data generating process to deliver the ES forecasts.

2.3 Parameter estimation and asymptotic properties

Our backtesting procedure requires to consistently estimate the parameters $\beta_0(u_j)$, and $\beta_1(u_j)$, for $j = 1, 2, \dots, p$. Under the hypothesis that a sequence of VaR is valid, coefficients satisfy $\beta_0(u_j) = 0$, and $\beta_1(u_j) = 1$, for $j = 1, 2, \dots, p$. In what follows, we denote by $\beta(u_j) = (\beta_0(u_j), \beta_1(u_j))'$ the vector of parameters for the u_j -th quantile index, and we write $\beta = (\beta(u_1)', \beta(u_2)', \dots, \beta(u_p))'$ the stacked vector of $2p$ coefficients. In addition, we assume that the sequence $\{u_j, j = 1, 2, \dots, p\}$ is ordered in the sense that $u_1 < u_2 < \dots < u_p < 1$.

In order to estimate β , we consider the multi-quantile regression approach recently proposed by White et al. (2008, 2015). A consistent QMLE estimator is given by

$$\hat{\beta} = \arg \min_{\beta \in \mathbb{R}^{2p}} T^{-1} \sum_{t=1}^T \left(\sum_{j=1}^p \rho_{u_j}(L_t - \beta_0(u_j) - \beta_1(u_j) VaR_t(u_j)) \right), \quad (9)$$

where $\rho_{u_j}(x) = x\psi_{u_j}(x)$ is the standard "check function", and $\psi_{u_j}(x) = u_j - \mathbb{1}(x \leq 0)$ is the usual quantile step function. Under suitable regularity conditions, White et al. (2008, 2015) show that this estimator is asymptotically normally distributed:

$$\sqrt{T}(\hat{\beta} - \beta) \xrightarrow{d} \mathcal{N}(0, \Sigma), \quad (10)$$

where Σ denotes the asymptotic covariance matrix which takes the form of a Huber (1967)

sandwich. Its expression is given by $\Sigma = A^{-1}VA^{-1}$, with:

$$V = \mathbb{E}[\eta_t \eta_t'], \quad (11)$$

$$\eta_t = \sum_{j=1}^p \nabla Q_{L_t}(u_j; \Omega_{t-1}) \psi_{u_j}(\epsilon_{j,t}), \quad (12)$$

$$A = \sum_{j=1}^p \mathbb{E}[f_{j,t}(0) \nabla Q_{L_t}(u_j; \Omega_{t-1}) \nabla' Q_{L_t}(u_j; \Omega_{t-1})], \quad (13)$$

where $\nabla Q_{L_t}(u_j; \Omega_{t-1})$ denotes the $2p$ gradient vector differentiated with respect to β , and $\epsilon_{j,t} = L_t - Q_{L_t}(u_j; \Omega_{t-1})$, and where $f_{j,t}(0)$ denotes the pdf of $\epsilon_{j,t}$ evaluated at zero. In appendix A, we provide a consistent estimator $\widehat{\Sigma}$ of the true unknown quantity Σ that will be used for the computation of our test statistics.

3 Backtesting ES

In this section, we present our backtests for ES. Our procedures assess whether the parameters $\beta_0(u_j)$ and $\beta_1(u_j)$ coincide with their expected values for the risk levels u_j , $j = 1, 2, \dots, p$. To this end, we propose four backtests that analyze various settings on the regression coefficients. In the sequel, we introduce the null hypotheses, the test statistics, and establish their asymptotic properties. Finally, we discuss the use of finite sample critical values and provide a bootstrap algorithm when the asymptotic theory does not apply conveniently.

3.1 The backtests

Formally, our goal is to test $\beta_0(u_j) = 0$, and $\beta_1(u_j) = 1$, for $j = 1, 2, \dots, p$. We propose to test various implications of these coefficient restrictions by taking into consideration four distinct null hypotheses based on a reduced number of constraints. Many backtests test implications of a more general hypothesis. In this context, Du and Escanciano (2017) assess two implications for the martingale difference sequence of their cumulative violation process.

McNeil and Frey (2000) and Nolde and Ziegel (2017) propose to test the zero mean hypothesis of their residuals which more largely behave as white noise.

Definition 2 (Null hypotheses). *Denote by J_1 , J_2 , I , and S , the four backtests. The corresponding null hypotheses H_{0,J_1} , H_{0,J_2} , $H_{0,I}$, $H_{0,S}$, are defined as follows:*

$$H_{0,J_1} : \sum_{j=1}^p (\beta_0(u_j) + \beta_1(u_j)) = p, \quad (14)$$

$$H_{0,J_2} : \sum_{j=1}^p \beta_0(u_j) = 0, \quad \text{and,} \quad \sum_{j=1}^p \beta_1(u_j) = p, \quad (15)$$

$$H_{0,I} : \sum_{j=1}^p \beta_0(u_j) = 0, \quad (16)$$

$$H_{0,S} : \sum_{j=1}^p \beta_1(u_j) = p, \quad (17)$$

where notations J_1 and J_2 indicate the "joint" backtests, and where I and S refer to the "intercept" backtest and to the "slope" backtest, respectively.

Definition 2 gives the null hypotheses H_{0,J_1} , H_{0,J_2} , $H_{0,I}$, $H_{0,S}$. They are devised to assess various implications that the regression coefficients should satisfy when the ES forecasts are valid. Notice that the coefficients are summed across risk levels u_j , $j = 1, 2, \dots, p$. This coefficients' aggregation substantially reduces the number of constraints to be tested. The structure of H_{0,J_2} is hence characterized by two constraints, and those of H_{0,J_1} , $H_{0,I}$, $H_{0,S}$ involve a single constraint.

Our null hypotheses analyze various settings on the regression coefficients. The null of the joint backtests, H_{0,J_1} and H_{0,J_2} , look at the expected value of both the intercept and slope parameters $\beta_0(u_j)$ and $\beta_1(u_j)$ for $j = 1, 2, \dots, p$. H_{0,J_1} sums the two types of coefficient together, while H_{0,J_2} sums the coefficients separately depending on whether they are slope parameters or intercept parameters. Finally, the null hypotheses of the intercept backtest and the slope backtest, $H_{0,I}$ and $H_{0,S}$, focus solely on one of the two parameter components. $H_{0,I}$

is built to examine the intercept parameters $\beta_0(u_j)$, $j = 1, 2, \dots, p$, and $H_{0,S}$ is devoted to the analysis of the slope parameters $\beta_1(u_j)$, $j = 1, 2, \dots, p$. These additional null hypotheses complement the joint backtests to identify the nature of the misspecification. When $H_{0,I}$ is rejected, this indicates that the forecasting errors are constant across time. In contrast, the rejection of $H_{0,S}$ suggests that the errors are time-varying since they change with respect to the VaR predictions.

Definition 3 (Wald-test statistics). *Let us denote by $W \in \{J_1, J_2, I, S\}$ the generic notation for the test statistic, and consider the classical formulation of a Wald-type test such as $H_{0,W} : R_W\beta = q_W$. The general expression of the test statistics is given by*

$$W = T \left(R_W \hat{\beta} - q_W \right)' \left(R_W \hat{\Sigma} R_W' \right)^{-1} \left(R_W \hat{\beta} - q_W \right), \quad (18)$$

where T is the out-of-sample size, and $\hat{\Sigma}$ denotes a consistent estimator of the asymptotic covariance matrix.

To assess our null hypotheses we consider Wald-type inference. Definition 3 provides the general expression of the test statistics. In accordance with our notations, substituting W by J_1 , J_2 , I , and S , yields the four test statistics. For ease of presentation, the null hypotheses are now presented in a classical formulation, such that $H_{0,W} : R_W\beta = q_W$. Given the null hypotheses of Definition 2, the quantities R_W and q_W are as follows: $R_{J_1} = \iota_p \otimes (1 \ 1)$, $q_{J_1} = p$, $R_{J_2} = \iota_p \otimes I_2$, $q_{J_2} = (0 \ p)'$, $R_I = \iota_p \otimes (1 \ 0)$, $q_I = 0$, $R_S = \iota_p \otimes (0 \ 1)$, $q_S = p$, where ι_p is a p -row unit vector, and I_2 denotes the identity matrix of size 2.

Proposition 1 (Chi-squared distribution). *Suppose the covariance matrix Σ is non singular. Under the normality condition of Equation (10), and the null hypotheses of Definition 2, the test statistics J_1 , I , and S , converge to a chi-squared distribution with 1 degree of freedom, and the test statistic J_2 converges to a chi-squared distribution with 2 degrees of freedom.*

Proposition 1 gives the asymptotic distribution of the Wald statistics J_1, J_2, I, S under their respective null hypotheses $H_{0,J_1}, H_{0,J_2}, H_{0,I}, H_{0,S}$. As a result of coefficients' aggregation, the asymptotic distributions are based on a small and fixed number of degrees of freedom no matter how p is chosen. Thus, the four backtests have unchanged critical values whatever the number of quantiles considered in the ES approximation. Finally, we provide in appendix B the proof for consistency of the tests under fixed untrue hypothesis.

3.2 Finite sample inference

Our four backtests are asymptotically chi-squared distributed, and it is thus possible to employ them if the asymptotic conditions are fulfilled for realistic sample sizes. However, in the specific context of ES assessment, the focus is on the extreme tail distribution, i.e. for risk levels above the regulatory coverage level, namely $\tau = 0.975$. In practice, this may induce scarce information, and affect the inference when the sample size is not sufficiently large. To overcome these typical deficiencies, we implement a bootstrap procedure to adjust the critical values of our test statistics in small samples.

The backtests of tail risk measures such as VaR and ES are typically affected by small sample size distortions. For instance, Gaglianone et al. (2011) report size distortions for moderate sample sizes. In the same vein, the regression procedure to assess ES proposed by Bayer and Dimitriadis (2018) induces size distortions even for large sample sizes, e.g. $T = 1000$. The authors also show that the conditional calibration test of Nolde and Ziegel (2017), and the exceedance residual test of McNeil and Frey (2000) display poor results for realistic samples. They propose a bootstrap algorithm to correct these biases. Finally, it should be noticed that Hurlin et al. (2017) introduce a bootstrap procedure dedicated to the inference of the risk measures themselves that is valid in finite samples.

In the following, we propose a pairs bootstrap algorithm (Freedman, 1981) in order to

correct the finite sample size distortions of our backtests. This is a fully non-parametric procedure that can be applied to a very wide range of models, including quantile regression model (Koenker et al., 2018). This approach consists in resampling the data, keeping the dependent and independent variables together in pairs. The procedure is valid for any sample sizes T , and large levels u_j , $j = 1, 2, \dots, p$, and ideally applies in our case when the constraints of the null hypothesis are linear in the parameters. The algorithm is as follows:

1. Estimate β and Σ on the original data $\{L_t, VaR_t(u_j)\}_{j=1,2,\dots,p}$, $t = 1, 2, \dots, T$, to obtain $\hat{\beta}$ and $\hat{\Sigma}$, and compute the unconstrained test statistic W given by

$$W = T \left(R_W \hat{\beta} - q_W \right)' \left(R_W \hat{\Sigma} R_W' \right)^{-1} \left(R_W \hat{\beta} - q_W \right).$$

2. Build a bootstrap sample by drawing with replacement T pairs of observations from the original data $\{L_t, VaR_t(u_j)\}_{j=1,2,\dots,p}$, $t = 1, 2, \dots, T$.
3. Estimate the model on the bootstrap sample, to obtain $\hat{\beta}^b$ and $\hat{\Sigma}^b$, and compute the bootstrapped test statistic W^b under the null hypothesis as follows:

$$W^b = T \left(R_W \hat{\beta}^b - R_W \hat{\beta} \right)' \left(R_W \hat{\Sigma}^b R_W' \right)^{-1} \left(R_W \hat{\beta}^b - R_W \hat{\beta} \right).$$

4. Repeat $B-1$ times steps 2 and 3, to obtain the bootstrap statistics W^b , $b = 1, 2, \dots, B$.

Two remarks should be made about the algorithm. First, when we use the pairs bootstrap we cannot impose the null hypothesis on the bootstrap data generating process since imposing restrictions on β is unfeasible. To overcome this issue, we calculate the bootstrap statistics by considering the difference $R_W \beta - R_W \hat{\beta}$ rather than $R_W \beta - q$. Since the estimate of β from the bootstrap samples should, on average, be equal to $\hat{\beta}$, at least asymptotically, the null hypothesis tested by W^b becomes "true" for the pairs bootstrap data generating process. Second, the critical value c_α is obtained as the α -quantile of the bootstrap statistics

W^b , $b = 1, 2, \dots, B$. The decision rule is as follows. If the original test statistic W is greater than the α -level bootstrapped critical value c_α , we conclude to the rejection of the null hypothesis. In addition, we compute the p-value of the test as $P = B^{-1} \sum_{b=1}^B \mathbb{1}(W^b > W)$.

4 Simulation Study

In this section, we provide Monte Carlo simulations to illustrate the finite sample properties (empirical size and power) of our four backtests. The simulation study is performed on 5000 replications, and we consider two sample sizes $T = 500, 2500$. The results are reported using both the asymptotic critical values (based on a χ^2 distribution), and the bootstrap critical values. We calculate the latter with $B = 1000$ bootstrap samples. Finally, the backtests are computed with $\tau = 0.975$, which is the coverage level applied in the context of the current banking regulation.

Beyond the traditional size and power analysis, a second important objective of this section is to characterize the influence of the number p of quantiles used to assess the ES forecasts. We aim at examining whether an ES backtest based on a large number of quantiles may provide better performances than a backtest based on a small number of quantiles, as it is recommended by the current BCBS guidelines. For that, we consider different choices for the number of risk levels, namely $p = 1, 2, 4, 6$. The p risk levels u_1, u_2, \dots, u_p are computed in accordance with Definition 1. Notice that $p = 1$ coincides with the VaR backtest at level τ of Gaglianone et al. (2011). With $p = 2$ risk levels, our backtests are in accordance with the number of quantiles of the regulatory guidances. Finally, the case $p = 4$ corresponds to the framework considered by Emmer et al. (2015).

The correct data generating process is given by the popular AR(1)-GARCH(1,1) specification with Student innovations. Accordingly, we define the ex-post portfolio loss L_t ,

$t = 1, 2, \dots, T$ as

$$\begin{aligned} L_t &= \delta_0 + \delta_1 L_{t-1} + \epsilon_t, \\ \epsilon_t &= \sigma_t \eta_t, \quad \eta_t \sim t_v, \end{aligned} \tag{19}$$

$$\sigma_t^2 = \gamma_0 + \gamma_1 \epsilon_{t-1}^2 + \gamma_2 \sigma_{t-1}^2,$$

where t_v denotes the Student's t distribution with v degrees of freedom. Given the model in Equation (19), the true ES and VaR at coverage level τ are given by

$$ES_t(\tau) = \delta_0 + \delta_1 L_{t-1} + \sigma_t m(\tau), \tag{20}$$

$$VaR_t(\tau) = \delta_0 + \delta_1 L_{t-1} + \sigma_t F_v^{-1}(\tau), \tag{21}$$

with $m(\tau) = \mathbb{E}[\eta_t | \eta_t \geq F_v^{-1}(\tau)]$, and where $F_v^{-1}(\tau)$ denotes the τ -quantile of the Student distribution with v degrees of freedom. Model parameters $(\delta_0, \delta_1, \gamma_0, \gamma_1, \gamma_2, v)$ are calibrated using the S&P500 series over the period 2013-2017, which leads us to consider the following numeric values in the simulation study $(-0.085, -0.093, 0.034, 0.214, 0.748, 5)$.

Finally to investigate the power, we consider several misspecified alternatives for L_t :

A_1 : AR(1)-GARCH(1,1) model with underestimated conditional variances: L_t is as Equation

$$(19), \text{ with } \sigma_t^2 = (\gamma_0 + \gamma_1 \epsilon_{t-1}^2 + \gamma_2 \sigma_{t-1}^2) \times (1 - \kappa), \text{ where } \kappa = 0.25, 0.50, 0.75, \text{ respectively.}$$

A_2 : GARCH in mean model: $L_t = \kappa \times \sigma_t^2 + \epsilon_t$, $\epsilon_t = \sigma_t \eta_t$, $\sigma_t^2 = \gamma_0 + \gamma_1 \epsilon_{t-1}^2 + \gamma_2 \sigma_{t-1}^2$, $\eta_t \sim t_v$,

where $\kappa = +2.5, -2.5$, respectively.

A_3 : AR(1)-GARCH(1,1) model with mixed normal innovations: L_t satisfies Equation (19), with

$$\eta_t \sim (0.5X^+ + 0.5X^-) / \sqrt{10}, \text{ where } X^+ \sim \mathcal{N}(3, 1) \text{ and } X^- \sim \mathcal{N}(-3, 1).$$

A_4 : 12-month historical simulation model : VaR and ES are given by their empirical counterparts

from the 250 previous trading days such that $VaR_t(\tau) = \text{percentile}(\{L_{t-i}\}_{i=1}^{250}, 100\tau)$, and

$$ES_t(\tau) = \frac{1}{\sum_{i=1}^{250} \mathbb{1}_{(L_{t-i} \geq VaR_{t-i}(\tau))}} \sum_{i=1}^{250} L_{t-i} \times \mathbb{1}_{(L_{t-i} \geq VaR_{t-i}(\tau))}.$$

In A_1 , the conditional variance of the series σ_t is alternately underestimated of 25%, 50%, and 75% to examine whether our tests are able to detect an underestimation of ES

stemming from a misleading appreciation of volatility. In A_2 , the misspecification occurs in the conditional mean by assuming a GARCH in mean model. In A_3 , the distribution of the innovations η_t is incorrect, and should imply misleading ES predictions compared to the t -distribution. Finally in scenario A_4 , the time-varying dynamics is incorrectly captured by the historical simulation method. It should be noticed that our alternatives are in line with the existing literature on risk assessment. Bayer and Dimitriadis (2018) look at an alternative close to A_1 by varying the coefficients related to the GARCH component. A_2 , and A_3 were applied by Du and Escanciano (2017) to illustrate the performance of their unconditional and conditional ES backtests. Finally, scenario A_4 was extensively studied by Kratz et al. (2018), Bayer and Dimitriadis (2018), Gaglianone et al. (2011), among many others.

Tables 1 and 2 report the rejection frequencies of the tests at 5% significance level for sample sizes $T = 500$, and $T = 2500$, respectively. The first four columns report the results of the asymptotic backtests, and the last four columns embed the bootstrap based tests. As previously discussed, the use of asymptotic critical values (based on a χ^2 distribution) induces important size distortions. For instance, with sample size $T = 500$, and $p = 6$, the four test statistics J_1 , J_2 , I , and S , display empirical sizes equal to 0.126, 0.273, 0.165, 0.216, respectively. These distortions are caused by poor inference made on regression parameters in the extreme upper tail when the sample size is not sufficiently large. It is worth noting, however, that the tests become well-sized when applying more central coverage levels (cf. appendix C). In contrast, the backtests based on bootstrap critical values give satisfactory size performances. Empirical sizes are close to the nominal size of 5% for all reported sample sizes and risk levels. For large coverage levels and moderate sample sizes, we thus recommend the use of bootstrap critical values rather than asymptotic ones.

Our backtests display good power performances. The results are discussed in details

Table 1: Empirical rejection rates of the backtests at 5% significance level, $T = 500$

		J_1	J_2	I	S	$J_1^{(b)}$	$J_2^{(b)}$	$I^{(b)}$	$S^{(b)}$
$p = 1$									
H_0		0.130	0.303	0.186	0.241	0.057	0.058	0.058	0.061
A_1	$\kappa = 0.25$	0.068	0.053	0.054	0.055	0.070	0.059	0.054	0.047
	$\kappa = 0.50$	0.591	0.055	0.053	0.061	0.434	0.070	0.061	0.044
	$\kappa = 0.75$	0.665	0.811	0.061	0.079	0.575	0.639	0.068	0.062
A_2	$\kappa = +2.5$	0.141	0.995	0.391	0.833	0.091	0.994	0.342	0.846
	$\kappa = -2.5$	0.104	0.997	0.989	0.763	0.065	0.996	0.988	0.773
A_3		0.623	0.994	0.247	0.106	0.523	0.992	0.202	0.117
A_4		0.120	0.145	0.208	0.120	0.079	0.128	0.165	0.128
$p = 2$									
H_0		0.116	0.278	0.166	0.223	0.055	0.058	0.057	0.059
A_1	$\kappa = 0.25$	0.059	0.054	0.052	0.058	0.071	0.061	0.051	0.042
	$\kappa = 0.50$	0.637	0.055	0.049	0.062	0.355	0.062	0.049	0.044
	$\kappa = 0.75$	0.802	0.693	0.089	0.072	0.643	0.553	0.053	0.059
A_2	$\kappa = +2.5$	0.078	0.987	0.353	0.840	0.041	0.977	0.341	0.854
	$\kappa = -2.5$	0.060	0.976	0.968	0.692	0.042	0.967	0.967	0.709
A_3		0.640	0.971	0.220	0.145	0.487	0.955	0.209	0.152
A_4		0.172	0.149	0.211	0.144	0.069	0.128	0.206	0.164
$p = 4$									
H_0		0.150	0.277	0.165	0.199	0.054	0.057	0.058	0.058
A_1	$k = 0.25$	0.057	0.054	0.050	0.051	0.068	0.061	0.053	0.049
	$\kappa = 0.50$	0.582	0.071	0.069	0.053	0.281	0.061	0.040	0.045
	$\kappa = 0.75$	0.816	0.602	0.073	0.054	0.659	0.430	0.072	0.065
A_2	$\kappa = +2.5$	0.060	0.971	0.318	0.776	0.053	0.941	0.317	0.821
	$\kappa = -2.5$	0.088	0.924	0.932	0.627	0.045	0.891	0.930	0.691
A_3		0.646	0.975	0.203	0.121	0.493	0.933	0.202	0.161
A_4		0.211	0.151	0.239	0.155	0.098	0.141	0.237	0.172
$p = 6$									
H_0		0.126	0.273	0.165	0.216	0.054	0.059	0.059	0.062
A_1	$\kappa = 0.25$	0.058	0.052	0.054	0.054	0.070	0.047	0.050	0.048
	$\kappa = 0.50$	0.552	0.054	0.048	0.055	0.286	0.069	0.053	0.043
	$\kappa = 0.75$	0.841	0.471	0.047	0.058	0.715	0.404	0.050	0.063
A_2	$\kappa = +2.5$	0.045	0.958	0.319	0.786	0.034	0.949	0.334	0.841
	$\kappa = -2.5$	0.111	0.878	0.927	0.571	0.045	0.862	0.930	0.636
A_3		0.651	0.955	0.180	0.110	0.502	0.938	0.192	0.148
A_4		0.236	0.162	0.272	0.181	0.148	0.241	0.261	0.194

Note: The results based on asymptotic critical values are reported in the first four columns. The results using bootstrap critical values are displayed in the last four columns, and indicated by (b) in the table. Reported powers are size-corrected.

hereinafter. First, we find that the tests generally detect well the misspecified alternatives A_1 , A_2 , A_3 , and A_4 , and we verify that there is a general improvement of powers as the sample size T increases, suggesting that these tests are consistent for these alternatives. For instance, with $T = 500$, and $p = 4$, the test statistic J_1 identifies the misleading scenario A_3 in 49.3% of times, while it reaches 98.1% of times with $T = 2500$. Second, the joint test

Table 2: Empirical rejection rates of the backtests at 5% significance level, $T = 2500$

		J_1	J_2	I	S	$J_1^{(b)}$	$J_2^{(b)}$	$I^{(b)}$	$S^{(b)}$
$p = 1$									
H_0		0.090	0.186	0.141	0.172	0.045	0.051	0.054	0.054
A_1	$\kappa = 0.25$	0.935	0.503	0.063	0.046	0.897	0.222	0.052	0.055
	$\kappa = 0.50$	0.998	1.000	0.074	0.168	0.995	1.000	0.071	0.112
	$\kappa = 0.75$	0.994	1.000	0.108	0.472	0.985	1.000	0.080	0.364
A_2	$\kappa = +2.5$	0.360	1.000	0.914	1.000	0.308	1.000	0.872	0.997
	$\kappa = -2.5$	0.303	1.000	1.000	0.987	0.249	1.000	1.000	0.983
A_3		0.990	1.000	0.749	0.807	0.984	1.000	0.679	0.711
A_4		0.855	0.518	0.718	0.552	0.761	0.361	0.614	0.448
$p = 2$									
H_0		0.103	0.184	0.160	0.178	0.045	0.052	0.052	0.056
A_1	$\kappa = 0.25$	0.849	0.308	0.058	0.069	0.745	0.208	0.055	0.026
	$\kappa = 0.50$	0.998	1.000	0.065	0.153	0.997	0.999	0.051	0.113
	$\kappa = 0.75$	0.995	1.000	0.107	0.485	0.992	1.000	0.086	0.407
A_2	$\kappa = +2.5$	0.141	1.000	0.893	0.997	0.102	1.000	0.865	0.996
	$\kappa = -2.5$	0.231	1.000	0.998	0.988	0.192	1.000	0.997	0.985
A_3		0.988	1.000	0.700	0.879	0.983	1.000	0.638	0.827
A_4		0.879	0.507	0.794	0.640	0.803	0.426	0.725	0.545
$p = 4$									
H_0		0.090	0.163	0.126	0.137	0.049	0.054	0.049	0.055
A_1	$\kappa = 0.25$	0.632	0.271	0.058	0.069	0.503	0.209	0.050	0.052
	$\kappa = 0.50$	0.998	1.000	0.079	0.085	0.998	1.000	0.054	0.090
	$\kappa = 0.75$	0.997	1.000	0.085	0.415	0.996	1.000	0.076	0.428
A_2	$\kappa = +2.5$	0.104	1.000	0.893	0.997	0.080	1.000	0.871	0.997
	$\kappa = -2.5$	0.384	1.000	0.995	0.980	0.330	1.000	0.994	0.981
A_3		0.984	1.000	0.577	0.826	0.981	1.000	0.549	0.840
A_4		0.894	0.530	0.767	0.651	0.851	0.474	0.741	0.589
$p = 6$									
H_0		0.108	0.172	0.125	0.139	0.051	0.053	0.055	0.057
A_1	$\kappa = 0.25$	0.470	0.318	0.055	0.060	0.416	0.219	0.047	0.052
	$\kappa = 0.50$	0.997	0.997	0.058	0.114	0.997	0.997	0.057	0.114
	$\kappa = 0.75$	0.999	1.000	0.069	0.497	0.998	1.000	0.080	0.502
A_2	$\kappa = +2.5$	0.095	1.000	0.854	1.000	0.082	1.000	0.865	1.000
	$\kappa = -2.5$	0.573	0.998	0.995	0.985	0.548	0.998	0.995	0.985
A_3		0.996	1.000	0.549	0.878	0.992	1.000	0.580	0.879
A_4		0.913	0.609	0.812	0.664	0.897	0.521	0.798	0.646

Note: The results based on asymptotic critical values are reported in the first four columns. The results using bootstrap critical values are displayed in the last four columns, and indicated by (b) in the table. Reported powers are size-corrected.

statistics, J_1 and J_2 , generally deliver higher power performances compared to the intercept and slope test statistics I , and S . This finding comes from the definition of the joint null hypotheses that focus on both intercept and slope coefficients, and are thus more conservative than the null of the intercept and slope backtests. In details for the two joint tests, we find that J_1 performs generally better to detect A_1 and A_4 , while J_2 more often identifies A_2 and

A_3 , which suggests complementarity between the two joint backtests.

Third, although the intercept and slope backtests exhibit lower power performances, they provide useful informations about the type of misspecification. We observe that the slope backtest performs better in alternatives A_1 and A_3 , while the intercept backtest is superior for alternative A_4 . In line with these rejections, A_1 and A_3 mainly affect the expected value of the slope parameters indicating that the error is essentially multiplicative with respect to the true quantiles. On the contrary, alternative A_4 induces distortions in the expected value of the intercept coefficients, suggesting that the VaRs issued from the ES model are affected additively. In the latter case, the error is hence more global and not directly related to the true quantiles.

Finally, we show that the selection of the number p of risk levels is not crucial for detecting alternatives A_1 , A_2 , and A_3 since reported powers are weakly affected by p . This finding may be explained by the nature of these alternatives for which the misspecification is relatively uniform along the tail, and does not require many levels. In contrast, for the last alternative A_4 , we conclude that an increase of p is valuable for detecting the misleading one-year historical simulation method since we observe a general improvement of powers for larger values of p . This is due to the fact that, for this alternative, the error made along the tail is more irregular and requires the use of additional levels.

5 Empirical application

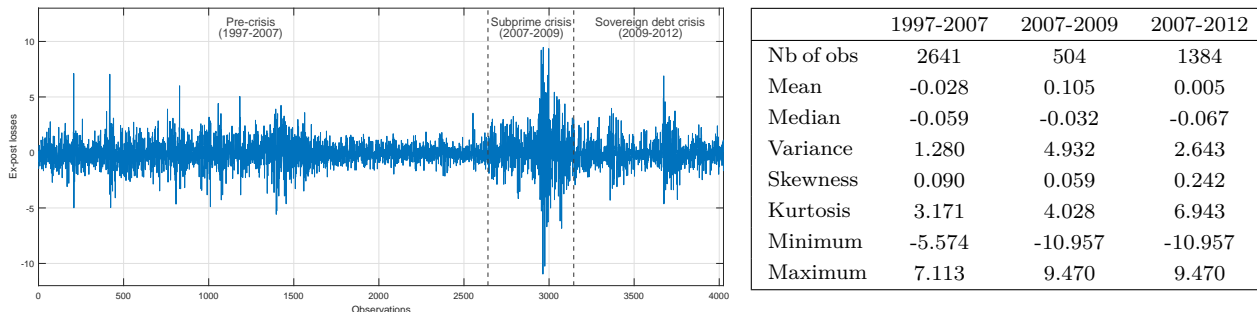
In this section, we apply our backtests to the daily returns of the S&P500 index, and illustrate their capabilities to identify a misspecified ES model. In addition, we provide a method for the adjustment of imperfect forecasts relying on our backtesting framework. In the sequel, we set $\tau = 0.975$ to coincide with the regulatory ES coverage level. The probability levels u_j , $j = 1, 2, \dots, p$, are calculated accordingly with Definition 1. In addition, we consider the

risk levels suggested by the BCBS, i.e. $u_1 = 0.975$, and $u_2 = 0.990$, respectively. Finally, for comparison purposes and to provide useful backtesting recommendations, we consider several values $p = 1, 2, 4$, and 6 .

5.1 Data

We consider the daily adjusted closing prices of the S&P500 index over the period January 1, 1997 - December 31, 2012. The in-sample period spans from January 1, 1997 until June 30, 2007, and we consider two out-of-sample periods (1) from July 1, 2007 to June 30, 2009, corresponding to the subprime mortgage crisis, and (2) from July 1, 2007 to December 31, 2012, which pools together the subprime mortgage crisis and the European sovereign debt crisis, two major episodes of economic and financial instability. We compute the daily log-returns and denote by L_t the opposite returns. In line with our notations, a positive value indicates a loss.

Figure 1: S&P500 daily losses (%), and descriptive statistics



Note: The sample covers the period from January 1, 1997 until December 31, 2012. Source: *finance.yahoo.com* website.

The S&P500 series is displayed in Figure 1 with the three aforementioned sub-periods. The in-sample period (1997-2007) is weakly volatile, while the out-of-sample crisis periods (2007-2009, and 2007-2012) are characterized by more severe levels of volatility, with several extreme events. Figure 1 also provides some descriptive statistics. The variance and the average ex-post losses are higher in the out-of-sample periods than in the in-sample period,

especially for the period 2007-2009. In addition, we observe that the series is right-skewed and has an excess kurtosis.

To predict the ES risk measure, we fit an AR(1)-GARCH(1,1) model with Student innovations, as defined in (19). The ES and VaR forecasts are defined as in Equations (20) and (21), respectively. The set of unknown parameters is estimated by maximum likelihood over the in-sample period. We obtain the following coefficient estimates $\{\widehat{\delta}_0, \widehat{\delta}_1, \widehat{\gamma}_0, \widehat{\gamma}_1, \widehat{\gamma}_2, \widehat{v}\} = \{-0.0568, -0.0321, 0.0067, 0.0603, 0.9356, 9\}$.

5.2 Empirical results

We start by evaluating the relevancy of the ES approximation of Definition 1, consisting in averaging several quantiles in the tail of the risk model. To do so, we compare the approximation considering $p = 1, 2, 4, 6$ quantiles, with what we refer to as "exact ES". The latter corresponds to an ES which is computed via an exact method of calculation. The technique relies on simulations, and is described in appendix D.

Figure 2: In-sample ES estimates issued from the approximation, and the exact calculation method

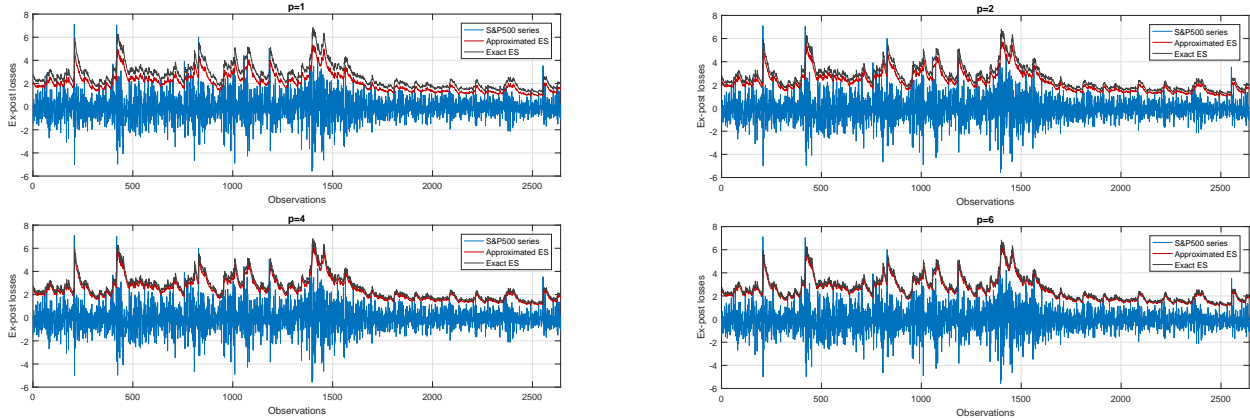


Figure 2 reports the in-sample ES estimates obtained using the approximation and the exact calculation method. Two remarks should be made here. First, the ES forecasts issued from the approximation and the exact method strongly correlate regardless of the value p ,

indicating that the approximation performs very well to capture the ex-post losses information. Because the approximation is obtained by combining VaRs, our finding is in accordance with several papers. Gouriéroux and Liu (2012) study the relationship between VaR and ES and show that they are related through their risk levels by some link function. Danielsson and Zhou (2016) argue that the two measures of risk are related by a small constant, and hence are conceptually equally informative. Second, we observe that the approximation is substantially improved when p slightly increases. As an illustration, we find that the ES estimates issued from the two competing approaches coincide almost completely using six quantiles. For its ease of implementation and its accuracy, the approximation hence appears highly appealing to compute ES and evaluate the performance of its forecasts.

Table 3: p-values of the backtests for several number p of quantiles

p	$J_1^{(b)}$	$J_2^{(b)}$	$I^{(b)}$	$S^{(b)}$
Panel A. 2007-2009				
1	0.035	0.051	0.125	0.949
2	0.014	0.041	0.038	0.200
4	0.009	0.040	0.023	0.103
6	0.009	0.038	0.021	0.123
2 (<i>regulatory levels</i>)	0.024	0.047	0.053	0.351
Panel B. 2007-2012				
1	0.056	0.040	0.176	0.554
2	0.004	0.013	0.014	0.215
4	0.002	0.004	0.003	0.096
6	0.004	0.005	0.009	0.196
2 (<i>regulatory levels</i>)	0.006	0.012	0.032	0.448

Note: p-values of the four backtests computed with $p = 1, 2, 4, 6$ risk levels successively, and the two regulatory levels $u_1 = 0.975$, $u_2 = 0.990$. Reported p-values are obtained using bootstrap critical values. Panel A gives the results for the period 2007-2009, and Panel B provides results for the period 2007-2012.

Table 3 reports the p-values of the backtests. For a sake of clarity, we only report the p-values obtained with the bootstrap critical values. Panel A provides the results over the sample 2007-2009. The test statistic J_1 leads to reject the validity of the ES predictions regardless of the number of quantiles p . We also observe that the larger p , the smaller

the p-value, indicating that the rejections are more severe when the number of risk levels increases. The test statistic J_2 displays higher p-values. At 5% significance level, the backtest based on a single VaR no longer rejects the validity of the ES predictions, and the p-value based on the regulatory levels of the BCBS is close to 5%, making the decision rule more unclear for those number of risk levels. Finally, given the p-values of the test statistic I for $p = 2, 4, 6$, we reject the expected value of the intercept coefficients, leading to the rejection of the ES forecasts in an additive viewpoint. On the contrary, the test statistic S leads to the conclusion that the slope parameters are as expected under the null hypothesis. Panel B contains the p-values for the period 2007-2012. Overall, we obtain similar results, but the rejections are found more severe in this enlarged sample due to the consistency of our backtesting methodology when applying it to larger sample sizes.

Given these results, it emerges that we should be very cautious in using a single quantile to assess the tail distribution of the risk model. Such procedures may lead market practitioners to select a model that generates mistaken ex-post forecasts. In addition, the results issued from the regulatory guidelines are contrasted. Two risk levels are not always enough to provide a sound conclusion about the correctness of the ES forecasts. We recommend the use of additional risk levels beyond the regulatory coverage level $\tau = 0.975$ to improve the reliability of the decision. Typically, our tests give satisfactory results with four to six risk levels.

Table 4 displays the coefficient estimates of the multi-quantile regression of Equation (8) for $p = 6$ risk levels, to help understand the reasons that explain the rejections of the ES forecasts. Panel A, and B, respectively provide the results for periods 2007-2009, and 2007-2012. It must be recalled that, if the risk model is correctly specified, the intercept coefficient β_0 and the slope coefficient β_1 take values zero and one, respectively. With these values in mind, we observe in both panels that the coefficients β_0 are overestimated for all

Table 4: Coefficient estimates issued from the multi-quantile regression, $p = 6$

	u_1	u_2	u_3	u_4	u_5	u_6
Panel A. 2007-2009						
β_0	0.661 (0.295)	0.696 (0.296)	0.808** (0.227)	0.846** (0.240)	0.965* (0.429)	1.076* (0.265)
β_1	1.005 (0.093)	0.953 (0.088)	0.911* (0.056)	0.847** (0.053)	0.804 (0.142)	0.689** (0.042)
<i>joint</i>	*	*	**	**		**
Panel B. 2007-2012						
β_0	0.376 (0.200)	0.510* (0.182)	0.692*** (0.195)	0.808*** (0.186)	0.777** (0.284)	0.784 (0.611)
β_1	1.031 (0.073)	0.974 (0.067)	0.902 (0.065)	0.851** (0.050)	0.826 (0.107)	0.787 (0.232)
<i>joint</i>	**	**	**	**	**	

Note: Standard errors are reported in parentheses. *, **, and *** indicate statistical significance at the 10%, 5% and 1% level, respectively, and are obtained using bootstrap critical values. Panel A gives estimation results for the period 2007-2009, and Panel B provides estimation results for the period 2007-2012.

the risk levels u_1, u_2, \dots, u_6 , while the coefficient β_1 is overestimated for the first level u_1 , and it becomes underestimated for all the remaining risk levels u_2, u_3, \dots, u_6 . The average errors of β_0 and β_1 are respectively equal to 0.84 and -0.13 in panel A, and 0.66 and -0.10 in panel B, indicating that the magnitude of errors is more important in panel A than in panel B, and that the intercept coefficients are more affected than the slope coefficients. Finally, we observe that the distortion of the regression coefficients with respect to their expected values is more pronounced for the highest risk levels suggesting that the errors are more severe far in the tail.

Table 4 also provides inference on the regression parameters obtained for each risk level. Hereinafter, we discuss the results at 5% significance level. We observe that the intercept parameters are statistically not equal to zero for the intermediary risk levels u_3 and u_4 in panel A, and the additional u_5 risk level is also significantly different from zero in panel B. For the slope coefficients, the u_4 and u_6 order quantiles are statistically different from one in panel A, and only the level u_4 is misspecified in panel B. Finally, we also report the joint

inference, i.e. looking at both the intercept and slope coefficients. The results are provided in the row labeled as "joint" (bottom of the panels). Similarly to the previous findings, we find that the intermediary, and highest order quantiles u_3 , u_4 and u_6 are misleading in panel A, whereas in panel B, all the quantiles are misspecified (except for the highest, presumably because the coefficients have large standard errors), meaning that the entire tail distribution is incorrectly estimated.

5.3 Adjusted ES forecasts

In what follows, we exploit our testing strategy to provide adjusted ES forecasts. Our routine is designed to take into account both misspecification and estimation uncertainty, without having to change the misspecified risk model. Furthermore, the procedure may serve to identify whether the model overestimates, or underestimates the true unknown ES, by comparing the initial forecast with its adjusted counterpart, which appears useful in a risk management and regulatory viewpoint.

The correction of imperfect risk forecasts is not a novel concept in the financial literature. Gouriéroux and Zakoïan (2013) propose to adjust the VaR forecasts affected by estimation uncertainty. More recently, Boucher et al. (2014) adjust imperfect VaR forecasts based on backtesting frameworks, and Lazar and Zhang (2018) apply the same strategy to adjust imperfect ES forecasts. The method typically consists in modifying the coverage level τ of the risk measure so as to meet the null hypothesis of valid risk forecasts. The originality of our technique stems from the fact that we employ a regression-based framework to correct the ex-ante forecasts, while available techniques are generally based on the concept of violation. This allows us to directly adjust the risk forecasts by application of a regression model, without having to rescale the coverage level τ .

For ease of notation, we assume the parameters of the multi-quantile regression to be

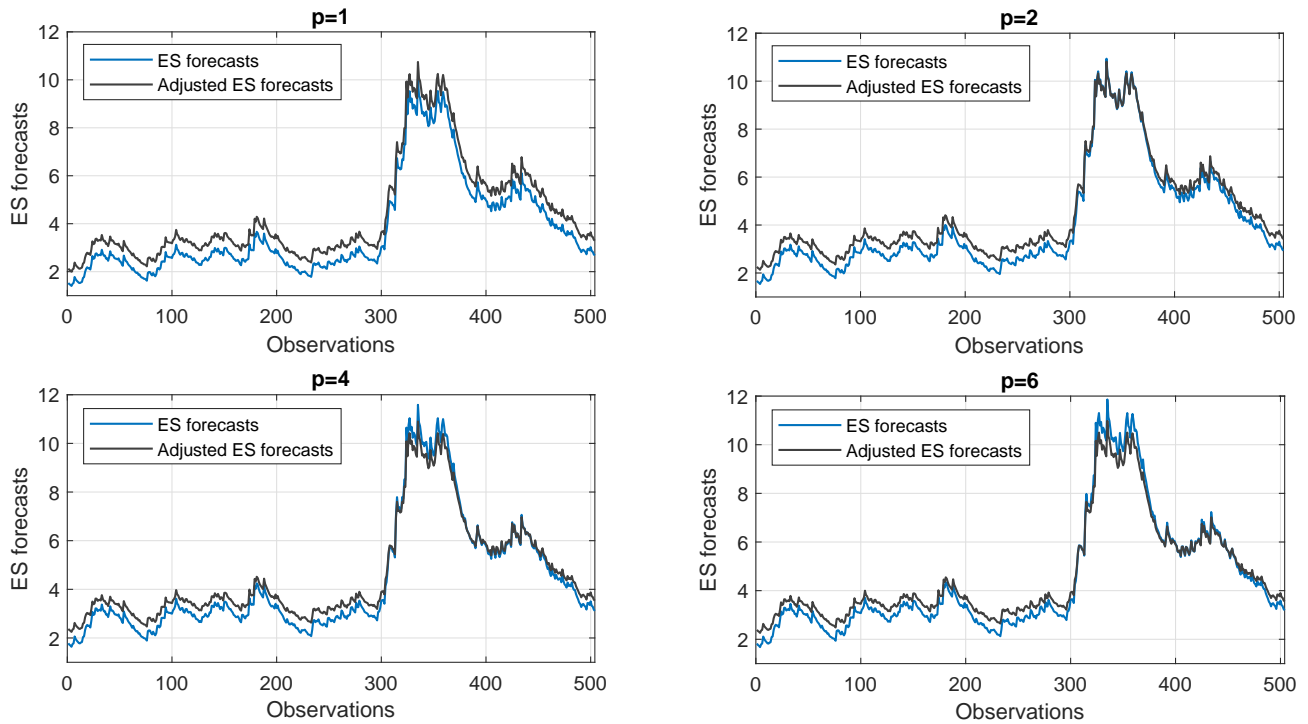
known. Formally, the adjusted VaR forecast at level u_j , and time t , is defined as the ex-ante prediction of the multi-quantile regression model, namely $Q_{L_t}(u_j; \Omega_{t-1})$. In view of representation (8), the initial imperfect VaR forecast is subsequently weighted by the regression parameters $\beta_0(u_j)$ and $\beta_1(u_j)$, which provides an adjustment corresponding to the global bias caused by misspecification and estimation uncertainty. The adjusted ES forecast at coverage level τ , and time t , is derived from the approximation of ES in terms of several adjusted VaRs as follows:

$$ES_t^*(\tau) = \frac{1}{p} \sum_{j=1}^p Q_{L_t}(u_j; \Omega_{t-1}). \quad (22)$$

The adjusted ES forecasts are robust to model risk, as they meet the desirable properties on the regression coefficients. Indeed, if we compute the backtesting procedure with the sequence $\{Q_{L_t}(u_j; \Omega_{t-1})\}_{j=1}^p$ instead of the initial misleading $\{VaR_t(u_j)\}_{j=1}^p$, the parameters would exactly coincide with the expected values under the null hypothesis, i.e. $\beta_0(u_j) = 0$, and $\beta_1(u_j) = 1$, for the risk levels u_1, u_2, \dots, u_p .

Figure 3 reports the ES predictions, and adjusted ES predictions for the period 2007-2009. The risk forecasts are built using the approximation with $p = 1, 2, 4, 6$. We observe that the AR(1)-GARCH(1,1) structure generally provides underestimated risk forecasts compared to the adjusted predictions. We note that the underestimation is more pronounced for the smallest predictions, the error being more severe when the risk forecasts are originally small. Our procedure hence serves at identifying whether the model generates overestimates, or underestimates, the latter case being more worrisome in a financial stability perspective. Finally, we observe that the ES forecasts may be slightly overestimated when the variance of the series is larger, suggesting that the risk model tends to overestimate the true volatility in turbulent financial times. This is caused by the volatility persistence in the GARCH component. We observe similar results for the period 2007-2012, as well as when applying the risk levels of the BCBS. The corresponding Figures 4, and 5 are reported in appendix E.

Figure 3: ES forecasts and adjusted ES forecasts over the period 2007-2009



6 Conclusion

The financial crisis of 2007-2008 and its aftermath has led to a reassessment of risk-management practices and financial market regulation through the Basel III accords (BCBS, 2010). Among the number of fundamental reforms for the market risk, the BCBS has adopted ES in place of VaR as the new standard for risk management and regulatory requirements. One of the major obstacle to its implementation was undoubtedly the deficit of simple tools for the evaluation of its forecasts. In this article, we have introduced four easy-to-use regression-based backtests of ES. Our methodology explores jointly the validity of the VaR forecasts along the tail distribution of the risk model. This approach has the advantage of being consistent with the regulatory guidances to verify if the underlying ES model delivers correct quantiles at levels 0.975 and 0.990 (BCBS, 2016). To do so, we propose to generalize the testing procedure introduced by Gaglianone et al. (2011) to the multivariate quantile

framework. The procedure consists in regressing the ex-post losses on the VaRs forecasts in a multi-quantile regression model, and then, testing the resulting parameter estimates using Wald-type inference.

Several simulation studies are provided. We find that the use of asymptotic critical values may lead to important size distortions if the sample size is not large enough. We propose a pairs bootstrap algorithm to correct these small-sample biases (Freedman, 1981), and show that our regression-based tests are reasonably sized within this bootstrap framework. We consider several misleading alternatives in line with the existing literature on risk assessment (Gaglianone et al., 2011, Du and Escanciano, 2017, Bayer and Dimitriadis, 2018, Kratz et al., 2018, etc.). Our proposed backtests detect misspecifications in all considered simulation experiments. In particular, they identify the most frequent inaccuracies in risk modeling, namely mean, variance, tail, and dynamic misspecifications.

We apply our tests on the S&P500 index over the period 2007-2012. Our backtests clearly reject the validity of the ES forecasts based on a simple AR(1)-GARCH(1,1) model during this period of financial turmoil. Beyond this result, we highlight the importance of choosing a sufficient number of quantiles to assess ES. The use of one or two risk levels is especially inadvisable as they are not always enough to identify improper risk forecasts. On the contrary, four to six risk levels deliver much more sound decisions, suggesting an update of the current regulatory guidelines in favor of the evaluation of more than two quantiles.

Within the current debate on risk assessment, the proposed regression-based backtests are valuable diagnostic tools in line with the expertise and skills of financial supervisors. They have the advantages to be easy to implement, and to complete the toolbox commonly used by market practitioners. They are therefore more likely to be embraced by financial institutions as new standards for financial risk management.

7 Acknowledgements

This research was financially supported by the ANR MultiRisk (ANR-16-CE26-0015-01). We would like to thank participants at the 17th annual conference "Développements Récents de l'Econométrie Appliquée à la Finance" (University of Nanterre, Paris), and the 12th International Conference on Computational and Financial Econometrics (University of Pisa, Italy). We would also like to specifically thank Denisa Banulescu-Radu, Sylvain Benoit, Sullivan Hué, Christophe Hurlin, Sébastien Laurent, Yang Lu, Richard Luger, Olivier Scaillet, and Sessi Tokpavi for fruitful discussions.

References

- [1] Acerbi, C., and Szekely, B. (2014). Backtesting Expected Shortfall. *Risk Magazine*, 27, 76–81.
- [2] Acerbi, C., and Tasche, D. (2002). On the Coherence of Expected Shortfall. *Journal of Banking and Finance*, 26(7), 1487-1503.
- [3] Argyropoulos, C., and Panopoulou, E. (2016). A Survey on Risk Forecast Evaluation. Working paper.
- [4] Artzner, P., Delbaen, F., Eber, J.M., and Heath, D. (1999). Coherent Measures of Risk. *Mathematical Finance*, 9(3), 203-228.
- [5] Basel Committee on Banking Supervision (2010). Basel III: A Global Regulatory Framework for More Resilient Banks and Banking Systems. Consultation paper, December.
- [6] Basel Committee on Banking Supervision (2016). Minimum Capital Requirements for Market Risk. Consultation paper, January.
- [7] Bayer, S., and Dimitriadis, T. (2018). Regression Based Expected Shortfall Backtesting. Working paper.
- [8] Berkowitz, J. (2001). Testing Density Forecasts, with Applications to Risk Management. *Journal of Business and Economic Statistics*, 19(4), 465–474.
- [9] Boucher, C., Danielsson, J., Kouontchou, P., and Maillet, B. (2014). Risk Models-at-Risk. *Journal of Banking and Finance*, 44, 72-92.

- [10] Christoffersen, P. (2011). Elements of Financial Risk Management. *Academic Press*, 2nd edition.
- [11] Colletaz, G., Hurlin, C., and Perignon, C. (2013). The Risk Map: A new Tool for Validating Risk Models. *Journal of Banking and Finance*, 37, 3843-3854.
- [12] Costanzino, N., and Curran, M. (2015). Backtesting General Spectral Risk Measures with Application to Expected Shortfall. *Journal of Risk Model Validation*, 9(1), 21–31.
- [13] Costanzino, N., and Curran, M. (2018). A Simple Traffic Light Approach to Backtesting Expected Shortfall. *Risks*, 6(1), 1-7.
- [14] Danielsson, J., and Zhou, C. (2016). Why Risk is so Hard to Measure. Working paper.
- [15] Du, Z., and Escanciano, J.C. (2017). Backtesting Expected Shortfall: Accounting for Tail Risk. *Management Science*, 63(4), 901-1269.
- [16] Emmer, S., Kratz, M., and Tasche, D. (2015). What is the Best Risk Measure in Practice? A Comparison of Standard Measures. *Journal of Risk*, 18(2), 31–60.
- [17] Engle, R., and Manganelli, S. (2004). CAViaR: Conditional Autoregressive Value at Risk by Regression Quantiles. *Journal of Business and Economic Statistics*, 22(4), 367-381.
- [18] Fissler, T., and Ziegel, J. (2016). Higher Order Elicitability and Osband’s Principle. *Annals of Statistics*, 44(4), 1680-1707.
- [19] Freedman, D. (1981). Bootstrapping Regression Models. *Annals of Statistics*, 9(6), 1218-1228.
- [20] Gaglianone, W.P., Lima, L.R., Linton, O., and Smith, D.R. (2011). Evaluating Value-at-Risk Models via Quantile Regression. *Journal of Business and Economic Statistics*, 29(1), 150-160.
- [21] Gneiting, T. (2011). Making and Evaluating Point Forecasts. *Journal of the American Statistical Association*, 106(494), 746-762.
- [22] Gouriéroux, C., and Zakoïan, J.M. (2013). Estimation-Adjusted VaR. *Econometric Theory*, 29(4), 735-770.
- [23] Gouriéroux, C., and Liu, W. (2012). Converting Tail-VaR to VaR: An Econometric Study. *Journal of Financial Econometrics*, 10(2), 233–264.
- [24] Huber, P.J. (1967). The Behavior of Maximum Likelihood Estimates under Nonstandard Conditions. *Proceedings of the Fifth Berkeley Symposium on Mathematical Statistics and Probability*, 1, 221-233, University of California Press, Berkeley.
- [25] Hurlin, C., Laurent, S., Quaedvlieg, R., and Smeekes, S. (2017). Risk Measure Inference. *Journal of Business and Economic Statistics*, 35(4), 499-512.

- [26] Jorion, P. (2006). Value at Risk: The New Benchmark for Managing Financial Risk. *McGraw-Hill*, third edition.
- [27] Kerkhof, J., and Melenberg, B. (2004). Backtesting for Risk-Based Regulatory Capital. *Journal of Banking and Finance*, 28(4), 1845–1865.
- [28] Koenker, R., Chernozhukov, V., He, X. and Peng, L. (2018). Handbook of Quantile Regression. *Chapman and Hall/CRC Handbooks of Modern Statistical Methods*.
- [29] Koenker, R., and Xiao, Z. (2002). Inference on the Quantile Regression Process. *Econometrica*, 70(4), 1583–1612.
- [30] Kratz, M., Lok, Y.H., and McNeil, A.J. (2018). Multinomial VaR backtests: A simple Implicit Approach to Backtesting Expected Shortfall. *Journal of Banking and Finance*, 88, 393-407.
- [31] Lazar, E., and Zhang, N. (2018). Model Risk of Expected Shortfall. Working paper.
- [32] McNeil, A.J., and Frey, R. (2000). Estimation of Tail-Related Risk Measures for Heteroscedastic Financial Time Series: an Extreme Value Approach. *Journal of Empirical Finance*, 7(3-4), 271–300.
- [33] Nolde, N., and Ziegel, J. (2017). Elicitability and Backtesting: Perspectives for Banking Regulation. *Annals of Applied Statistics*, 11(4), 1833-1874.
- [34] Patton, A.J., Ziegel, J.F., and Chen, R. (2018). Dynamic Semiparametric Models for Expected Shortfall (and Value-at-Risk). Forthcoming in *Journal of Econometrics*.
- [35] Powell, J.L. (1984). Least Absolute Deviations Estimation for the Censored Regression Model. *Journal of Econometrics*, 25(3), 303-325.
- [36] Taylor, J.W. (2017). Forecasting Value at Risk and Expected Shortfall using a Semiparametric Approach Based on the Asymmetric Laplace Distribution. Forthcoming in *Journal of Business and Economic Statistics*.
- [37] White, H.L., Kim, T.H., and Manganelli, S. (2008). Modeling Autoregressive Conditional Skewness and Kurtosis with Multi-Quantile CAViaR. In Bollerslev T., Russell, J., and Watson, M. editors, *Volatility and Time Series Econometrics: Essays in Honor of Robert F. Engle*.
- [38] White, H.L., Kim, T.H., and Manganelli, S. (2015). VAR for VaR: Measuring Tail Dependence using Multivariate Regression Quantiles. *Journal of Econometrics*, 187(1), 169-188.
- [39] Wong, W.K. (2008). Backtesting Trading Risk of Commercial Banks using Expected Shortfall. *Journal of Banking and Finance*, 32(7), 1404–1415.

Appendix

A - Consistent variance-covariance matrix estimation

In what follows, we provide a consistent estimator of the variance-covariance matrix Σ . The methodology is derived from White et al. (2008, 2015) who provide asymptotic theory in a multi-quantile regression framework. A consistent estimate of Σ can be obtained from the decomposition of the Huber (1976) sandwich form and is thus given by $\hat{\Sigma} = \hat{A}^{-1}\hat{V}\hat{A}^{-1}$. In the sequel, we provide consistent estimators \hat{A} , and \hat{V} . To obtain \hat{V} , we apply a simple plug-in estimator as follows:

$$\hat{V} = T^{-1} \sum_{t=1}^T \hat{\eta}_t \hat{\eta}_t', \quad (23)$$

where $\hat{\eta}_t$ is given by its estimated counterpart $\hat{\eta}_t = \sum_{j=1}^p \nabla \hat{Q}_{L_t}(u_j, \Omega_{t-1}) \psi_{u_j}(\hat{\epsilon}_{j,t})$, with $\hat{Q}_{L_t}(u_j, \Omega_{t-1}) = \hat{\beta}_0(u_j) + \hat{\beta}_1(u_j) VaR_t(u_j)$, and $\hat{\epsilon}_{j,t} = L_t - \hat{Q}_{L_t}(u_j, \Omega_{t-1})$.

The estimation of A is trickier because it requires to consistently estimate $f_{j,t}(0)$, namely the density of the error term $\epsilon_{j,t}$ given Ω_{t-1} evaluated at zero. Because the function is unknown, we follow Powell (1984) and use a non parametric estimator. The method was also implemented by Engle and Manganelli (2004) to estimate the variance-covariance matrix of a set of coefficients issued from the so-called CaViaR model. \hat{A} is then given by

$$\hat{A} = (2\hat{c}_T T)^{-1} \sum_{t=1}^T \sum_{j=1}^p \mathbb{1}(|\hat{\epsilon}_{j,t}| \leq \hat{c}_T) \nabla \hat{Q}_{L_t}(u_j, \Omega_{t-1}) \nabla' \hat{Q}_{L_t}(u_j, \Omega_{t-1}), \quad (24)$$

where \hat{c}_T is a bandwidth parameter that must verify $\hat{c}_T/c_T \xrightarrow{P} 1$, with c_T a nonstochastic positive sequence satisfying $c_T = o(1)$, and $c_T^{-1} = o(T^{1/2})$. Throughout the paper, we select a bandwidth parameter $\hat{c}_T = T^{-1/7}$ which verifies the above properties.

B - Proof of consistency under fixed untrue hypothesis

Proof. In line with our previous notations, we term W the generic notation of the test statistic such that $W \in \{J_1, J_2, I, S\}$. The test statistic is given by

$$W = T(R_W\hat{\beta} - q_W)'(R_W\hat{\Sigma}R_W')^{-1}(R_W\hat{\beta} - q_W). \quad (25)$$

The null hypothesis of the proposed Wald-type test can be written as $H_{0,W} : R_W\beta - q_W = 0$, against the two-sided alternative $H_{1,W} : R_W\beta - q_W \neq 0$. The continuous mapping theorem implies under $H_{1,W}$ that

$$R_W\hat{\beta} - q_W \xrightarrow{p} R_W\beta - q_W \neq 0. \quad (26)$$

Rearranging the term T in the test statistic and using the continuous mapping theorem leads

$$WT^{-1} \xrightarrow{p} (R_W\beta - q_W)'(R_W\Sigma R_W')^{-1}(R_W\beta - q_W). \quad (27)$$

Because $(R_W\Sigma R_W')^{-1}$ is positive definite, we get under $H_{1,W}$: $(R_W\beta - q_W)'(R_W\Sigma R_W')^{-1}(R_W\beta - q_W) > 0$. Multiplying $(R_W\beta - q_W)'(R_W\Sigma R_W')^{-1}(R_W\beta - q_W)$ by T under $H_{1,W}$ hence gives

$$\lim_{T \rightarrow +\infty} W = +\infty, \quad (28)$$

and therefore we get

$$\lim_{T \rightarrow +\infty} \mathbb{P}(W > \chi_{1-\alpha}^2(d_W) | H_{1,W}) = 1, \quad (29)$$

where $\chi_{1-\alpha}^2(d_W)$ is the fractile of order $1 - \alpha$ of the chi-square distribution with d_W degrees of freedom, and where α is the significance level of the test. ■

C - Empirical sizes for more central coverage levels

Table 5: Empirical sizes of the asymptotic backtests at a 5% significance level, T=500, T=2500

τ	T=500				T=2500			
	J_1	J_2	I	S	J_1	J_2	I	S
$p = 1$								
0.5	0.045	0.034	0.042	0.048	0.048	0.044	0.048	0.045
0.6	0.053	0.045	0.028	0.051	0.064	0.059	0.048	0.061
0.7	0.081	0.063	0.042	0.075	0.074	0.055	0.055	0.072
0.8	0.085	0.082	0.072	0.087	0.070	0.073	0.065	0.069
0.9	0.107	0.149	0.117	0.135	0.071	0.105	0.090	0.087
0.975	0.130	0.303	0.186	0.241	0.090	0.186	0.141	0.172
$p = 2$								
0.5	0.049	0.041	0.042	0.049	0.046	0.050	0.042	0.044
0.6	0.058	0.077	0.062	0.056	0.059	0.065	0.066	0.058
0.7	0.072	0.079	0.062	0.072	0.060	0.069	0.060	0.070
0.8	0.082	0.115	0.086	0.089	0.067	0.085	0.083	0.081
0.9	0.118	0.160	0.138	0.142	0.081	0.121	0.106	0.107
0.975	0.116	0.278	0.166	0.223	0.103	0.184	0.160	0.178
$p = 4$								
0.5	0.049	0.057	0.054	0.050	0.043	0.052	0.053	0.046
0.6	0.055	0.072	0.066	0.053	0.061	0.066	0.073	0.060
0.7	0.073	0.097	0.076	0.073	0.069	0.089	0.079	0.076
0.8	0.081	0.110	0.088	0.083	0.064	0.104	0.083	0.085
0.9	0.092	0.158	0.114	0.128	0.067	0.104	0.084	0.086
0.975	0.150	0.277	0.165	0.199	0.090	0.163	0.126	0.137
$p = 6$								
0.5	0.055	0.058	0.056	0.057	0.043	0.055	0.055	0.046
0.6	0.061	0.079	0.079	0.067	0.047	0.068	0.058	0.047
0.7	0.079	0.107	0.088	0.080	0.052	0.070	0.057	0.055
0.8	0.079	0.118	0.100	0.093	0.061	0.089	0.073	0.074
0.9	0.098	0.168	0.122	0.137	0.060	0.105	0.086	0.086
0.975	0.126	0.273	0.165	0.216	0.108	0.172	0.125	0.139

Note: Empirical sizes of the four backtests using asymptotic critical values (based on the χ^2 distribution) for sample sizes $T = 500$ and $T = 2500$. The results are reported for more central coverage levels $\tau = 0.5, 0.6, 0.7, 0.8, 0.9, 0.975$, and number of risk levels $p = 1, 2, 4, 6$.

D - Exact calculation method of ES

In this section, we describe the methodology used for the computation of exact ES forecasts at a given coverage level τ . Several techniques are available in practice. In the following, because the distribution of the innovations is parametric, we rely on Monte Carlo simulations. For ease of notation, we assume parameters to be known while in practice we use estimated parameters. The algorithm is as follows:

1. Randomly draw S pseudo standardized innovations $\{\eta_t^s\}_{s=1}^S$ from the Student distribution, with degrees of freedom v . We set the number $S = 100000$ in the empirical application.
2. Compute the ES at time t of the standardized innovation η_t as the Monte Carlo average of the simulated innovations:

$$m(\tau) = \frac{1}{\sum_{s=1}^S \mathbb{1}(\eta_t^s \geq F_v^{-1}(\tau))} \sum_{s=1}^S \eta_t^s \times \mathbb{1}(\eta_t^s \geq F_v^{-1}(\tau)),$$

where $F_v^{-1}(\tau)$ is the τ -quantile of the innovation distribution and is obtained as follows

$$F_v^{-1}(\tau) = \text{percentile}(\{\eta_t^s\}_{s=1}^S, 100\tau).$$

3. Compute the ES at time t as follows:

$$ES_t(\tau) = \delta_0 + \delta_1 L_{t-1} + \sigma_t m(\tau).$$

E - Adjusted ES forecasts

Figure 4: ES forecasts and adjusted ES forecasts over the period 2007-2012

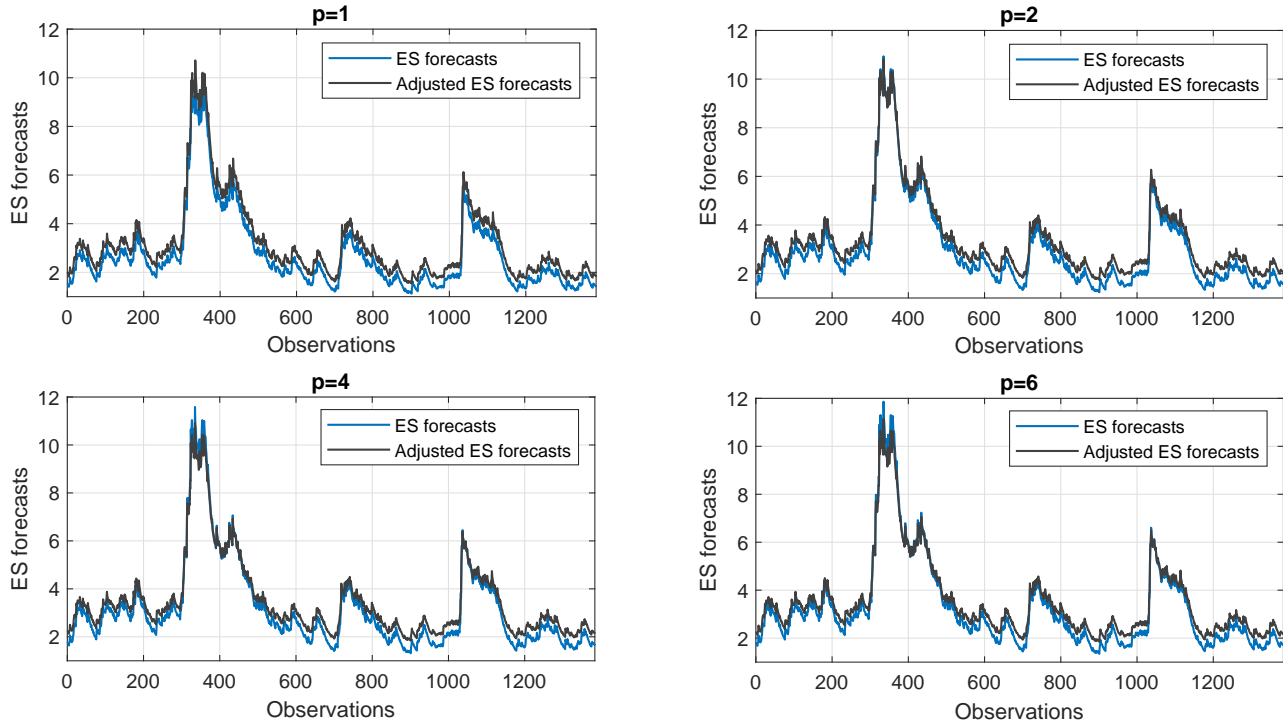


Figure 5: ES forecasts and adjusted ES forecasts over the periods 2007-2009 (on the left) and 2007-2012 (on the right) with the two regulatory risk levels

