



HAL
open science

Who sells to whom in the suburbs? Home price inflation and the dynamics of sellers and buyers in the metropolitan region of Paris, 1996-2012

Renaud Le Goix, Timothée Giraud, Robin Cura, Thibault Le Corre, Julien Migozzi

► To cite this version:

Renaud Le Goix, Timothée Giraud, Robin Cura, Thibault Le Corre, Julien Migozzi. Who sells to whom in the suburbs? Home price inflation and the dynamics of sellers and buyers in the metropolitan region of Paris, 1996-2012. 2018. halshs-01968663v1

HAL Id: halshs-01968663

<https://shs.hal.science/halshs-01968663v1>

Preprint submitted on 3 Jan 2019 (v1), last revised 1 Apr 2019 (v2)

HAL is a multi-disciplinary open access archive for the deposit and dissemination of scientific research documents, whether they are published or not. The documents may come from teaching and research institutions in France or abroad, or from public or private research centers.

L'archive ouverte pluridisciplinaire **HAL**, est destinée au dépôt et à la diffusion de documents scientifiques de niveau recherche, publiés ou non, émanant des établissements d'enseignement et de recherche français ou étrangers, des laboratoires publics ou privés.



Distributed under a Creative Commons Attribution - NonCommercial - ShareAlike 4.0 International License

Who sells to whom in the suburbs? Home price inflation and the dynamics of sellers and buyers in the metropolitan region of Paris, 1996-2012

Renaud Le Goix ^{1¶☐*}, Timothée Giraud^{2&}, Robin Cura^{3&}, Thibault Le Corre ^{3&}, Julien Migozzi ^{4&}

1 Université Paris Diderot USPC / UMR Géographie-cités 8504 CNRS, Paris France

2 Université Paris Diderot USPC / UMS RIATE CNRS, Paris France

3 Université Paris 1 Panthéon Sorbonne / UMR Géographie-cités 8504 CNRS, Paris France

4 Ecole Normale Supérieure de Paris / UMR PACTE, Grenoble, France & UMR Géographie-cités 8504, Paris France

¶ Conceptualization, Data curation, Formal analysis, Funding acquisition, Investigation, Methodology, Supervision, Visualization, Writing – original draft, Writing – review & editing

& These authors also contributed equally to this work: Software, Visualization, Conceptualization, Methodology, Writing – review & editing.

☐ Current Address: Univ. Paris-Diderot - Paris 7 / UMR Géographie-cités 8504, 5 rue Thomas Mann, cc7001-GHES, 75205 PARIS Cedex 13 - France

* renaud.legoix@univ-paris-diderot.fr

*Pre-print final authors' version, submitted to PlosOne Geography July 2018.
Accepted, with minor revision, Dec. 2018.*

Abstract

Price inflation has outbalanced the income of residents and buyers in major post-industrial city-regions, and real estate has become an important driver of these inequalities. In a context of a resilient inflation of home values during the last two decades in the greater Paris Region, it is critical to examine housing price dynamics to get a better understanding of socioeconomic segregation.

This paper aims at presenting spatial analysis of the dynamics of segregation pertaining to inflation, analyzing price and sellers and buyers data. Using interpolation techniques and multivariate analysis, the paper presents a spatial analysis of property-level data from the Paris Chamber of Notaries (1996-2012) in a GIS (159,000 transactions in suburban areas, single family homes only). Multivariate analysis capture price change and local trajectories of occupational status, i.e. changes in balance between inward and outward flows of sellers and buyers. We adopt a method that fits the fragmented spatial patterns of suburbanization. To do so, we remove the spatial bias by means of a regular 1-km spatial grid, interpolating the variables within it, using a time-distance matrix.

The main results are threefold. We document the spatial patterns of professionalization (a rise of executives, intermediate occupation and employees) to describe the main trends of inward mobility in property ownership in suburbs, offsetting

the outward mobility of retired persons. Second, neighborhood trajectories are related to the diverging patterns of appreciation, between local contexts of accumulation with a growth of residential prices, and suburbs with declining trends. The maturity of suburbanization yields a diversified structure of segregation between the social groups, that do not simply oppose executives vs. blue collar suburbs. A follow-up research agenda is finally outlined.

Résumé

L'inflation immobilière est devenue un facteur essentiel des inégalités : la hausse des prix a en effet été plus rapide que celle des revenus dans la plupart des métropoles post-industrielles. Dans un contexte d'inflation continue des valeurs immobilières depuis deux décennies dans la région Ile-de-France, l'analyse des dynamiques des prix immobiliers vise à mieux saisir les processus de ségrégation socioéconomique.

L'article propose une analyse spatiale des dynamiques de ségrégation résultantes de cette inflation, en analysant les prix et les données sur les acquéreurs et les vendeurs. À partir d'interpolations et d'analyses multivariées, on présente une analyse spatiale des données des transactions de la Chambre des Notaires (1996-2012): 159,000 transactions dans le périurbain, pour les maisons individuelles, sont analysées. Sont analysées la dynamique spatiale des prix, ainsi que les trajectoires locales socio-professionnelles des acquéreurs-vendeurs, c'est-à-dire le solde entre le nombre d'acquéreurs et de vendeurs par catégorie socioprofessionnelle. La méthode vise une cohérence avec la structure spatiale fragmentée du périurbain : afin de neutraliser les biais (MAUP), on utilise une grille de 1 km pour l'interpolation des variables, et celle-ci repose sur une matrice des distances-temps.

Les résultats sont de trois ordres. D'une part, la dynamique de professionnalisation (solde positif de CPIS, professions intermédiaires et employés) explique la structure spatiale de l'accession et de l'achat dans le périurbain, les retraités étant plutôt vendeurs et sortant du marché. D'autre part, l'inflation des prix se traduit par des dynamiques divergentes, entre des contextes d'appréciation et d'accumulation ; et des contextes locaux de dépréciation relative, critiques pour les propriétaires. Enfin, la maturité de la périurbanisation produit des formes d'appariement variées, qui ne reposent pas sur l'opposition cadres-ouvriers, mais sur une grande diversité des contextes. L'exposé d'agenda de recherche conclut la contribution.

Introduction

In France, continuous inflation of residential real estate for the last 20 years and after the financial crisis has remained a paradox: while the evolution of both price to income ratio (i.e. affordability index) and rent to price ratio [1] should discourage homebuyers and investors in French metropolitan areas, housing markets have remained active and the price trend did not reverse [2,3], a situation that Timbeau [4] analyzed as a "resilient bubble". This issue forms the basis of our research. To analyze this paradox, we elaborate on Piketty's statement (2013), that real estate assets have become a main driver of socio-spatial inequalities among households, the flow of investment by households being instrumental in the dynamics of asset capitalization and segregation. Housing finance and credit have expanded dramatically, and explain this flow of investment [5-7], yielding a price inflation regime.

This paper seeks to provide an empirically grounded, neighborhood based, visualization and analysis of housing market dynamics, that elaborates on how price inflation has increased socioeconomic segregation. We therefore assume that real estate

assets and prices have become the main driver of socio-spatial inequalities among households. Lower income households have gained access to property ownership through the expansion of credit, affordability and subsidized access to ownership. But we also assume that the price inflation regime has been produced by an unprecedented flow of credit and transmission of assets (i.e. intergenerational transfers) fueling price inflation and inequalities.

Price inflation has rendered the structure of affordability more inequitable, thereby exacerbating socio-spatial exclusion and segregation. This issue requires a careful examination of the representation and conditions of local markets. To do so, we examine the single family home market in the suburbs of Paris metropolitan region, structured as a 60% owner occupied market. Mapping and spatially analyzing residential markets matter, because such representations structure knowledge and decisions by market actors and homebuyers. For instance, households secure their own trajectories, capitalizing on real-estate assets and/or engaging with risk and financial vulnerability [8]. In French metropolitan areas, the spatial patterns of price inflation, however, confuse the signals property buyers generally anticipate from the market. While inflation seems ubiquitous, it has increased the spatial homogeneity between neighborhoods (a strong negative correlation between initial price level and its increase leads to a trend of spatial homogenization), but it has paradoxically also been said to have strengthened the unequal spatial structure of price and the hierarchy of neighborhoods [9–12].

We assume, to a certain extent, that the theoretical framework linking property price and socioeconomic inequalities is not fully stabilized. Indeed, there are two relatively independent extensive bodies of academic literature. On the one side, much has been written about the financialization of housing, that will be discussed in the literature review (section 1). On the other, much has been done to explain and model local house price variations (for instance, but not exclusively, econometrics of housing prices, discussed in section 2). We aim at combining these approaches in an integrated analysis of the dynamic of property prices and the dynamics of inequalities and segregation, to better address local patterns and dynamics.

- This requires offsetting the limits of the commonly stylized relationships between segregation, inequalities and housing prices. Indeed, most of the literature about economic inequalities is based on the fact that asset inequalities between households depend on housing values, and most of the standard approaches of housing markets assume that large parts of the differences between real estate values depend upon social and urban parameters, *e.g.* the socioeconomic composition of the neighborhood. To put it simply, property values are in one approach an independent variable, and in another one a dependent variable.
- The research therefore aims at building a more systemic understanding of the relationships between housing prices and inequalities [13]. A spatio-temporal approach of housing affordability and social structure of ownership is necessary to avoid the risk of decontextualized views of inequalities and housing dynamics. We do so by bridging datasets describing individual transactions from the Chamber of the Notaries (base BIEN) and spatial grids, to unfold a mapping effort that takes into account the variegated and fragmented spatial patterns of suburbanization.

In this context, the novelty of this paper is to deal with (1) social change with individual data, in a property owners market, not relying on decennial census data but rather on annual flows of sellers and buyers. Such variables describing individuals in transaction data are rare but highly informative. Compared to decennial census data and sample population public data, doing so allows us to get a better understanding of

the market dynamics occurring between censuses, and for instance to capture the effects of the 2007-2008 global financial crisis (GFC), and its recovery. We analyze a geospatial dataset provided by the Paris Chamber of the Notaries, describing individual transactions between 1996 and 2012. As a corollary, we also aim at (2) adopting an adequate methodology to handle discrete individual and spatially indexed socioeconomic data to draw longitudinal analysis and compare data over time. We remove the spatial bias by establishing a regular spatial grid, interpolating the variables within it.

The paper is structured as follows: The first section covers the background and literature review, insisting on the following paradox: an increased income to value gap did not impact resilient market dynamics, in a context of increased financialization and asset-based welfare transition. We frame the Paris case study in the literature as a model of capitalist urban production. A subsequent section sets the empirical grounds and describes our methodological approach, designed to address the challenges of real-estate data analysis within suburban / exurban areas. We finally describe and discuss the findings of this research, a spatial analysis of neighborhood change (upward/downward) produced by market dynamics: price, transactions, seller-buyers socio-occupational categories. Elaborating on the results of this study, the conclusion outlines a research agenda connecting inequalities between households, affordability of housing and wealth accumulation in owner-occupied properties.

Research background: Analyzing the price regime and socio-economic dynamics of suburban markets in the Paris region

Price and income have been correlated for a long period of time, a strong linkage that Friggit compared to a "tunnel" of price [1]. The gap between property prices and household income has widened since the early 2000s: affordability is now at its lowest historical level since 1965, with property values increasing over 70% since 2000 [1]. For a time, households benefited from lower interest rates and longer loan maturities to offset the effects of price inflation and to maintain purchasing power. The following paradox has consequently emerged in the post-financial crisis era : while the evolution of both price-to-income ratio (i.e. affordability index) and rent-to-price ratio should discourage homebuyers and investors in metropolitan areas (in France, and also in other national contexts), housing markets have remained active and the price trend did not reverse. Most public policies have actively reinforced ownership as a standard lifestyle. The homeownership rate has increased from 35% in 1954, up to 57% [14], a movement analyzed as the outcome of a patrimonial middle class benefiting from price growth, government incentives for credit, and securing life trajectories [8, 15].

Volatile inflation and market regimes

Since the early 1990s, housing finance has increased dramatically in the Global North, yielding a volatile inflation of price: residential mortgage outstanding debt reached historical levels in 2006: 35% (France), 50% (Sweden, Spain, Germany), 80% (US) and 100% (Netherlands, Denmark) of the GDP, according to Schwartz and Seabrooke [16]. Since the early 2000s, a gap between household income and property price has therefore widened. In the US, Australia, Britain, Ireland, Canada, the average house price-to-income ratio of 3:1 in 1996 reached values between 5:1 and 4:1 in 2007 [16]. A study conducted by Aalbers in 2016 [17] in 17 countries (14 in Europe, and USA, Canada, Japan) showed that the homeownership rates ranged between 50 to 80%, while

change in 1985-2010 price-to-income ratio increased from + 13% up to +28% in France, 44% in the UK ; some exceptions being Germany and Japan.

In cities with dynamic residential markets, property price inflation is generally explained by a shortage of supply in face of an excessive demand. To avoid a crisis, the proposed solutions are supply-side policies that seek to redress the market balance by expanding housing provision. Yet such measures are likely to stimulate inflation [18]. The reason is that housing shortage in local markets is not independent from other factors that are often analyzed at macro-economic levels as (1) market arrangements, driven by the generalization of mortgage to lower income households in post-industrial economies [5–7] ; (2) aging of homeowners, and induced intergenerational equity gaps between retirees (75% are owners in France) and the rest of the population [19]; (3) global financial strategies that contribute to reduce the supply of affordable housing in major metropolitan areas [20, 21]; (4) regulation and state-led incentives supporting both lower-income homeownership [22] and rental investment [23]; (5) ordinary financialization, *i.e.* household's wealth dependency to market fluctuations and necessity for households to behave as if they were assets managers, because of the role of housing wealth to secure life trajectories [24, 25].

Homeownership and vulnerability of households

These are the reasons why Aalbers [17] contends that among the variegated forms of contemporary capitalism and real-world political economy, housing, capital accumulation, debt and price are central issues, yet peripheral to academic political economy and geography. Indeed authors theoretically describe a path dependency-shift in almost every nation-state influenced by global World Bank policies [26], after the 1993 report *Housing: Enabling Markets to Work summarized assessment, best practices and recommendations* on how important the housing sector could be for the economy, including guidelines and suitable policies for governments. In a political economy perspective, Fernandez and Aalbers [27] argue that despite significant differences, a gradual shift across national models has occurred. Scholarly works describe housing asset-based welfare, a rising ideology of homeownership across modern-industrialized societies [28], characterized by liberal-economic ideologies and market mechanisms driven by policy-measures, socio-ideological frameworks [29] and finance-led accumulation regimes [30]. More specifically, theories link the high proportion of capital investment that housing represents for households and the ways welfare states are organized and reformed [31], the pursuit of owner-occupancy promotion being viewed as a superior form of tenure, while privatizing social housing [32]. Trajectories are then highly dependent on national frameworks, and the state enables households to act as investors, engaging through markets with prospects of future gains, while exposed to greater risks (volatility of price, loss of property values, risks of bankruptcy and foreclosures, etc.), raising questions of individual and systemic risks, and therefore vulnerabilities of households [25]. This statement is also true in the push for a homeowners' society in France [15].

Characterizing suburban production regime in France

Many changes have affected the suburban housing expansion regime since the 1980s, that have not been thoroughly addressed and characterized in France, compared to the existing literature in Spain [33–35], in the US [5, 7, 36], in South-East Asia [18, 37], and the expansion of low-income housing financing in the Global South [38–40]. Homeownership in France, implemented as a means to secure the life trajectory of households, can be also analyzed as a way to reform welfare and the ordinary financialization of social/retirement insurance, which is a social process inducing

inequalities and uncertainty [14, 15]. The making of the new institutional regime is not only national but also local. Housing policies, relationships between stakeholders, financial institutions, planners, builders, and regulators are embedded into local/regional contexts that shape property market dynamics [41]. This contributes to the reinforcement of a new institutional regime where residential markets are seen as growth drivers with inflationary effects [3]. Public and private actors have converging interests in housing market expansion (fiscal resources, economic opportunities) and produce a specific representation of the housing demand [42, 43]. This attempt to solve what is seen as a "housing crisis" exclusively by expanding the housing provision has effects on households' residential trajectories and asset strategies. This characterization of a new institutional regime leads to the question of whether it accentuates socio-spatial inequalities and segregation or not. Since the institutional regime relies on the mobilization of households, the financial effort (price-to-income ratio) appears as a key variable, as well as the socioeconomic origins of prospective buyers (i.e. sellers and buyers socio-occupational categories), the latter being the core variables analyzed in this paper.

Theorizing suburbs in the metropolitan region of Paris as a property market case study

Not only the outcomes of changes in the suburban housing production regime have not been well characterized in France yet, but the theoretical significance of the Paris-region suburban case study, its historical and interpretative bias, are also to be discussed before we proceed further.

The city of Paris and its metropolitan region are often cited as a model, and as an exception, but are rarely actually included in comparative research. Compared to other A+ and A global cities [44] in which segregation and housing have been thoroughly analyzed and compared (i.e. New York, London, Tokyo, Chicago, Los Angeles, Hong-Kong and Shanghai), the immense body of literature discussing urban production, housing and segregation in Paris has been mostly published in the French language, and gives to Paris a relatively and regrettably exceptional standing in the field, starting with the setting up of the post-Second Empire Paris as a unique model of urban segregation, planning and public spaces. Often, Paris is compared to its European counterpart, London [45]. One hypothesis of this exceptionalism of the Paris case study may be related to the tremendous impact in urban studies of, for instance, Benjamin's Baudelaire, Castells analysis of capitalism in the city [46], Lefebvre's analysis downtown urban renewal [47], and Harvey's *Paris, Capital of modernity* [48]. That is to say that urban production and segregation dynamics in Paris are therefore rarely compared to other cities, with the exception of Wacquant's analysis of hyper-segregated inner suburbs of public housing, and his critics of comparison with the US afro-american ghettos [49].

Another explanation derives from of a certain idiosyncrasy of French language human geography itself, *i.e.* provincialism [50], in which the hyper-centralized Paris case study is first used to better comprehend the structure of inequalities at a national level : Paris-region segregation patterns are often compared to larger French metropolitan areas, so as to demonstrate how the capital region operates according to the global cities hypothesis of reinforced segregation patterns, compared to post-industrial socioeconomic patterns found in other French cities [51]. Although scholarly works in the French language thoroughly analyze segregation in Paris and its suburbs [52–56], segregation in the Paris metropolitan region, outside the limits of the inner city, is still scarcely documented in the English language : the recent *Socioeconomic segregation in European capital cities* excludes Paris [13], the second largest European capital. Recent work describing socioeconomic segregation and ethnic segregation also often elaborate on this

relative exceptionalism of the Paris case study [57,58]. Prêteceille discusses this issue in a synthetic paper covering the dynamics of socioeconomic and ethno-racial segregation, social mixing and planning policies in Paris and its region [57]. To frame the research question, he insists on how the construction of debates on socioeconomic segregation in Paris has focused on explanations, with a mix of fascination and dramatization of segregation in the *banlieues*, with a US bias. Prêteceille pushes for an approach that considers the processual and dynamic dimensions. His approach covers socioeconomic (professionalization, mass unemployment and growing casualization of labor) and ethnic segregation by the means of census data, but his research does not cover how the transformation of the production of housing systematically contributes to inequalities, especially the contribution of suburban and mass homeownership to the process [57].

When segregation in France is however quantitatively analyzed in the English language, this is for instance to be compared with US socioeconomic segregation patterns, the theoretical focus being on cross-national variations on segregation, e.g. the size of the urban system and role of the welfare state in income redistribution [59]. Some focus has also been on categories of neighborhoods to compare, for instance revitalization in distressed areas, segregation and social mixing, comparing between Paris, and cities in North American and in the UK [60].

It is a corollary that the study of French and Parisian suburbs suffer from an American bias, suburban dynamics being easily matched to phenomena loosely compared with US suburban dynamics, despite the proclaimed exceptionality of the Parisian case study. (a) Anglo-american concepts and theories describing suburbs have been widely adopted to analyze suburbs in the Paris region, and rather unquestioned, such as boomburbs, edge-cities, gated communities, a terminology especially used to demonstrate the theories of fragmentation, polarization, privatization and secession of suburban areas [61–63]. Therefore, (b) a common oversimplification is to analyze the Paris region as a counter model to American cities, and a model of the supposed hallmarks of European cities: post-industrial transition, high unemployment, high level of skilled workers, higher densities, lower levels of social segregation, lower spatial mismatch, better public transportation [64]. In the same movement, Paris has also been compared to other metropolitan areas, focusing on two major standpoints: on the one hand similar trends towards gentrification and suburbanization ; and on the other poor job accessibility, exposure to the negative externalities of concentrated poverty in deprived neighborhoods. (c) Such views have opposed outer suburbs as an homogeneous middle class, to gentrified city centers and over-segregated *banlieues* of public housing blocks, and have been criticized as an uncritical transfer and overreach of the Anglo-American concepts of ghettos [49], americanization of suburbs [65], fragmentation and secessionist attitudes [66,67]. This is not only a media representation, as social scientists contributed to this shift in emphasis from socioeconomic characteristics, to an ethnoracial characteristics, thereby "validating the relevance of the US case as a point of comparison" [57, p.156]. Interestingly, recent work however pushes for more nuanced analysis of middle-class diversity and social mixing in segregation patterns [58,60]

Meaning, Paris as a case-study is simultaneously and ambiguously used to both confirm and contradict some general hypothesis about global urbanization. This is even more true when discussing the typologies of suburbanization. In different comparative analyses, the Paris region is used to document variegated categories of suburbanism:

- a region characterized by an early sprawl of both bourgeois and blue-collar industrial suburbs [68], and influenced by the English model of single family-home suburbanization;
- a core city surrounded by satellites new towns produced in strong state-led planning and densification efforts [69] ;

- and also an historical example of an early americanization of residential landscape produced by developers [70, 71] ;
- an example of maximum fragmentation of local land policies, *nimbysm* and socioeconomic selection based on exclusiveness, supported by the small size of local government bodies, the communes [67], that fits well the evolutions of governance and privatization identified for instance by Keil and Young [72] ;
- an entanglement of different models and references that is also compared to and analyzed according to the *Zwischendadt* theories, literally "in-between", and the *città diffusa* models of "concentrated deconcentration" [72, 73];
- That last stage of suburbanization in France is also often analyzed as being post-suburban, a term that defines "in terms of inner suburban population loss and relative income decline, suburban employment increase, suburban out-commuting reduction, exurban population and income increase, and farmland conversion" [74, p. 261]. "Post-suburban" describes the state of suburbanization in many countries [75, 76], although Paris metropolitan region is often *also* viewed as a counter model, insisting on the denser fabric of post-suburbanization in France and Paris region and a slower transformation of the monocentric structure of metropolitan areas, according to [69].

In short, an overflow of empirical analysis describes the suburbs of Paris as a unique case study, and this paper may well be just another one. But this highlights the requirement to engage in a critical analysis of suburbs as both a products, economical and social processes.

Characterizing social change and the effect of the production regime on the property market and inequalities can be one way to do so. Taking transactions seriously is a means to study suburbs as an owner-occupied housing market, under the assumption that purchasing a property is a total social act [77]. This social act aligns the several dimensions of households' income, assets and equity; their self perceptions and life aspirations; their lifestyles; their positions as a socio-occupational categories; their strategies and constraints in terms of preferential location and place of work; their abilities to fulfill the requirements of the financial and banking systems to get a loan approved, in a very normative way [7].

Current debates in Paris 'burbs and research hypothesis

To do so, we argue it is critical to get a better understanding of the shape and dynamics of inequalities in the outer-suburbs of Paris, by the means of exploring the actual role that typical suburban single family homes, residential estates and subdivisions, have in property ownership, for instance on upward or downward mobilities [78], for two main reasons :

- First, in recent social and political science debates in France, some authors tend to reify single family home suburbs (and small towns) as segregated peripheries of the lower-middle class, described as isolated from metropolitan major financial centers, employment, and left aside by public policies, urban renewal and state-led provision of services [79]. Such analyses tend to provide the media and policymakers with a simplistic description of suburban residents as far-right voters, low-wage workers, and anxious, car-dependent property owners [80]. These views are based on spatial correlations between outer suburbs, sub-rural areas and far-right voters, although the ecological fallacy of this line of interpretation has been clearly demonstrated [81], because of complex and changing patterns of spatial segregation in suburbs. It is widely admitted that socioeconomic

segregation in the Paris metropolitan region is still structured by a class-based segregation between executives, managers and higher-order management neighborhoods, and workers, i.e. the inertia of the 19e century divide [52, 82, 83]. This bipolar divide has been however rearranged with the rise of salaried employees (29,5% of the active population), intermediate occupations, the decline of blue collars (now 16,5%) and the restructuring of employment (part-time, unemployment, etc), as thoroughly studied by Préteceille [52]. Such a restructuring also fuels a debate between the contenders of social polarization versus professionalization [52, 84, 85] on the one hand, and increased inequalities because of income and asset-capitalization [86] on the other. We contend both interpretation are not mutually exclusive.

To better inform the debate, this paper elaborates on socio-occupational categories and property values, in an asset-based welfare system. We assume (hypothesis #1) that professionalization (a rise of executives, intermediate occupation and salaried employees, as defined in public statistics categories) well describes the dynamics of property ownership in suburbs, and that local trajectories in price appreciation are critical in understanding the different regimes of wealth accumulation for suburban households. Property prices, therefore, directly affect social and spatial inequalities of residents and buyers in a stratified market, and also intensify inequalities through asset-capitalization (hypothesis #2).

- Second, a strong public policy emphasis has been set on integrating city centers and suburban areas, under a reincorporation of metropolitan governmental bodies after 2016, but this reform explicitly excluded outer suburbs, because of their specific spatial and socioeconomic patterns, set aside from the rest of the core agglomeration [87–89]. This theoretical problem of the explicit linkages and dependance between outer-suburbs and the central agglomeration of Paris has however been preeminent in the literature.

Suburbs have long been regarded as the locus for the lower middle class [90], excluded from more central locations by the high cost of housing. However, some recent studies have sought to show the greatest diversity of population dynamics, in terms of age, class, [22, 83, 91], or origin [92], as well as the variegated forms of political and social engagement [93]. To some extent, suburbanization in France is mostly seen as a movement of residential loosening that cannot be easily compared to the edgeless city [94]. Urban centers, however, have remained major places of employment; in 2010, suburban areas as a whole account for 12% of jobs whereas a quarter of employees are suburbanites. In the early 2010s, the average size of suburban municipalities was 820 inhabitants according to E. Charmes [67], and an estimated 30% of the population lives in statistical suburban areas. This growing discrepancy between place of residence and place of work feeds an intense growth of commuting trips between centers and peripheries. A certain level of job diversification has been seen beyond residential services [95], as well as a growing trend towards sub-centering in connection with the emergence of secondary job centers [96, 97]. Data show that the suburbs of Paris indeed face similar problems as other large metropolitan areas. Distances separating jobs from housing have been increasing, public transit systems are efficient within the very heart of the city but most trips connecting suburbs to suburbs are difficult to achieve within a reasonable amount of time, this having detrimental effect especially on low-skilled workers with poor job accessibility [64], although car-dependance effects on segregation are found to be mitigated by residential mobility [95]. Residential mobility is however impaired by the lack of affordable housing [98].

To some extent, this paper remains in a tradition that consists in exclusively

focusing on the outer ring of suburbs. By doing so, we aim at clarifying the effects of a tension between two interpretative trends, either of suburbs as a market being fueled by sprawl and social homogenization ; or whether the maturation of suburbs yields a stronger diversification of socioeconomic profiles due to commuting patterns, sub-centering and locational strategies or constraints. *From this second standpoint, we assume that sub-centering and maturity of suburbanization should result in a structured and diversified pattern of homeownership segregation between the different social classes (hypothesis #3).*

Research design, material and methodology: an empirical analysis of transactions in Paris suburban areas.

The case study for this paper is located in the western part of the greater Paris region (Ile-de-France), an administrative region of 12,2 millions inhabitants (19% of the total population of metropolitan France). Housing has been characterized since the 1990s by continuous tensions on housing markets : according to public data from INSEE [98], 49.7% are occupied by renters, and 26,6% of the total housing stock are single family homes. The price index has been multiplied by a factor two for apartments between 1997 and 2017 ; and by 3,5 for homes. We analyzed in this research the submarket of single-family detached suburban homes, *i.e.* a typical component of suburban submarkets usually found in housing estates and tract-housing developments : data are provided for the outer rings of the greater Paris region, the 4 administrative districts (départements) of Yvelines, Val-d'Oise, Seine-et-Marne, and Essonne, a sub-region of 5,438,000 inhabitants in 2013, among which more than half of the population (51,6%) lived in individual housing units, and 60% were owner-occupied dwellings, according national statistics (INSEE) [98]. Individual housing has been produced under two different statistical categories, "Individuel" (Single detached homes), and master-planned tract housing : data describing development permits show that both types represent an outstanding majority of properties built in the outer crown of Paris between 1999 and 2011 [99].

A geographical approach of the dynamics of prices and inequalities

To explicitly link the dynamics of property prices and the dynamics of inequalities on the market, we analyzed transactions using the characterization of sellers and buyers by socio-occupational categories in an owner-driven market. This strategy stems from the limits of the commonly stylized relationships between inequalities and housing prices. Many analyses of economic inequalities are based on the fact that inequalities and asset capitalization between households depend on housing value inflation within a crisis of affordability. However, from a methodological point of view, most of the standard approaches to housing markets assume that large parts of the differences between real estate values depend upon social and urban parameters and the socioeconomic composition of the neighborhood, *i.e.* inequalities and segregation.

Economic geographers mainly approach the issue of price through the hegemonic framework of econometrics, narrowing down the issue to control dependent and independent variables in modeling housing market segments. The immense body of work from spatial econometrics and housing segmentation derive from neo-classical models, which tend to explain property valuations through the mixed effects of fixed characteristics and spatial attributes [100]. Indeed, standard econometrics assign a value

to a typical good, according to the hedonic attributes of the property (consent to pay for each of the attributes), under the hypothesis that sellers and buyers agree on a market price for the attributes. This is usually performed by the means of a regression model, explanatory variables derived from the attributes of the properties, characteristics of the surroundings (i.e. social and natural environment), and information regarding accessibility or locational characteristics, *c.f.* Rosen [101]. Classical approaches focus on price formation more than on a detailed geography of property price and the actual mapping and representation of market dynamics. Information on the dynamic geography and socioeconomic profiles of sellers and buyers has therefore been overlooked in the literature.

Consequently, the explicit understanding of space is not always properly handled by the models: much of the research effort has been directed to the definition of submarket segments described by typical goods, and correcting or controlling for spatial autocorrelation problems in price determination, for which many modeling implementations have been tested [102, 103]. The need for better spatial analysis in hedonic price modeling in contextualizing the housing markets and its spatial interactions is often acknowledged [104]. But some scholars argue that space and distance are inadequate explanatory variables, some exploring the multilevel interactions of amenities with price according to distance in order to better account for geographically nested effects and scalar interactions [105, 106]; while others contend the need to radically over-simplify the problem of autocorrelation and consider spatial coordinates (x and y) as explanatory variables [107, pp. 624-625]. Sophisticated econometric approaches have also been tested to better include the variegated specifications of externalities resulting from neighborhood effects, street effects and locational effects. These are functions implemented with discrete variables constructed on distance thresholds from schools, parks [106], light-rail and trams [108] or urban renewal districts [109]. Such models also handle externalities e.g. the perception of environmental assets or noise [110]. This research has contributed to contextualize the effect of distance on property pricing. Elaborating a theory of price and spatial interaction however requires a better and explicit understanding of exogenous and relational socio-spatial interactions that interfere at many nested scalar effects.

Hedonic pricing focuses on explaining price formation rather than on a detailed geography of property price and its mapping and representation. Though now implementing many refinements, this approach relies mostly upon the concept of equilibrium and pays little attention to price dynamics. Price dynamics are indeed a geographical problem because of the remarkable catching up and convergence processes that occur between neighborhoods explained by spatially displaced demand, a dynamic observed for instance in London [85], and Paris [111], that strongly supports rent gap theory [112]. The rents extracted from urban locations convey the assumption that house price inflation could not be reduced to the invisible hand of supply and demand governing price dynamics. For instance, Cooper *et al.* [113] examine the dynamics of price due to market leading market lagging phenomenon, by the means of a cross-correlation matrix representing price linkage between different areas in the UK housing-market spatially indexed time-series. Hence, well-known phenomena related to the dynamic of property appreciation or decay have to be studied as spatial dynamics. Furthermore, it has been shown that housing price inflation does not necessarily involve a contraction of demand [114], nor does increased supply imply depreciation [115]. The reasons for this is that urban land is embedded in a system of value production and capture through which social, political and property relations of capitalism are intermediated [116], that also disconnects value from the market theoretical equilibrium. Some scholars therefore conceptualized real estate as other forms of capital and commodity [117], a means to advance the uncoupling of housing rent from land rent.

Such uncoupling matters for the geography of real estate markets, as stock properties do not have to include increased costs of production (i.e. land rent), and prices of properties increase or devalue while properties themselves do not upgrade or downgrade [118].

This problem highlights the needs for a more spatial approach, well advocated by Boulay [9], as well as the development of analytical tools to model, visualize, and explain the evolution and distribution of transactions, prices and accumulation across the differentiated spaces of the urban fabric. To do so, we test interpolation and visualization methods that rely on an explicit function of distance (travel-time), within suburban homogeneous (single-family homes in subdivisions), although spatially fragmented submarkets.

Spatial transactions time series

Individual transactions for the whole metropolitan region of Paris were obtained from the Chamber of the Notaries - Paris Notaire Service (PNS). This database contains a sample of transactions for the region and its suburbs, within the administrative limits of Ile-de-France (roughly 1 million rows), covering a 16 year timeframe : 1996, 1999, 2003, then every year from 2004 to 2012. All records contain information on property amenities and pricing (Fig 1), but also a series of understudied variables on sellers and buyers, such as age, sex, socio-economic status, national origin, place of residence, and mortgage. The main variables used in this paper are property price and occupation of sellers and buyers when the property is sold or purchased by an individual (Fig 2), set aside are real-estate investment trusts (REITS) and real-estate professionals.

Residential markets in France, especially in suburbs, have not been structured yet by institutional investors and investment funds [119]. Regarding the price, the aim being to distinguish between the various local patterns of appreciation and depreciation, we adopt the nominal price of properties as an indicator of housing price inflation. In a national context where price inflation is decoupled from macro-economic fundamentals (slow economic growth and low inflation in France during the last decades) [1], we are more interested in the unequal geography of nominal price dynamics, from which stems affordability issues for households and increased price to income ratios.

Although they are public records, transaction data are considered in France a proprietary database, distributed to researchers by PNS as a commercial product and subject to restrictions for the dissemination of results. Given the cost of the database for public research institutions, only a limited number of years and a sample of transaction have been acquired, considering the scholarly work that has already been published using datasets covering the 1993-2006 period for the Paris region [11, 111], and some exploratory work recently conducted on suburban market data [12]. As a consequence, the sample is composed of all transactions for municipalities of 10,000 inhabitants or less in 2011, and a random 50% sampling of transactions for all larger municipalities. All transactions are geographically indexed, with the address, the parcel number, latitude and longitude. From this dataset, we have extracted the single-family detached suburban homes (*pavillon*), a typical component of suburban submarkets usually found in housing estates and tract-housing developments (152,449 records), in 815 suburban municipalities of the four outer ring districts (Yvelines, Essonne, Val-de-Marne, Val-d'Oise). This sample was finally adjusted: using the property price, the first and last percentile of transactions was withdrawn from the sample because of inaccuracies in some price data coding, resulting in very low or unreliably high prices for single family homes. Furthermore, to offset the imbalance in the frequencies of transactions in municipalities of more than 10,000 inhabitants, the random sample of transaction was duplicated in such cases, resulting in a correct total number of weights in the redressed sample of 206,126 transactions. Redressing the total weight of

transactions did not affect the statistical distributions of values, and was a necessary procedure to perform the subsequent data processing (as summarized in Fig 3).

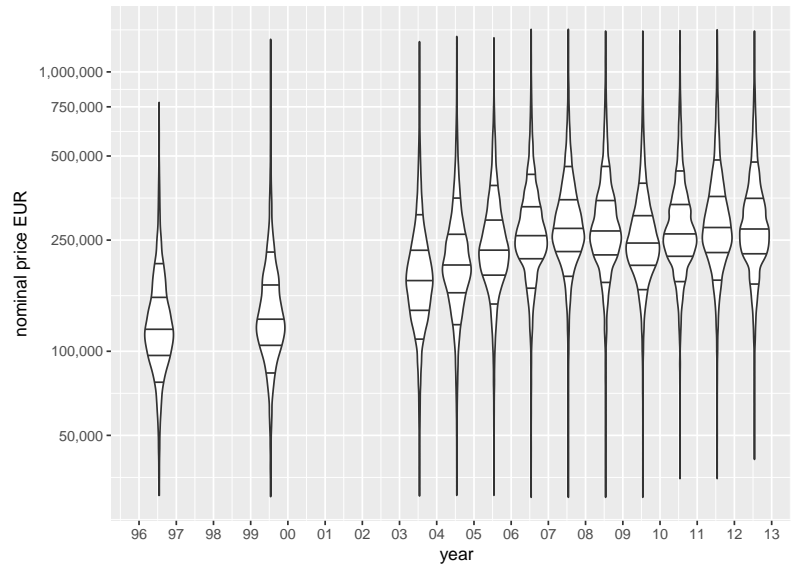


Fig 1. Univariate distribution of house values, in Euros, 1996-2012. Violin plots represent kernel density estimates. Thresholds defined as 1st decile, first quartile, median, third quartiles and 9th decile; price scale, \log_{10} . For breakdown of price trends by socio-occupational categories, *cf.*

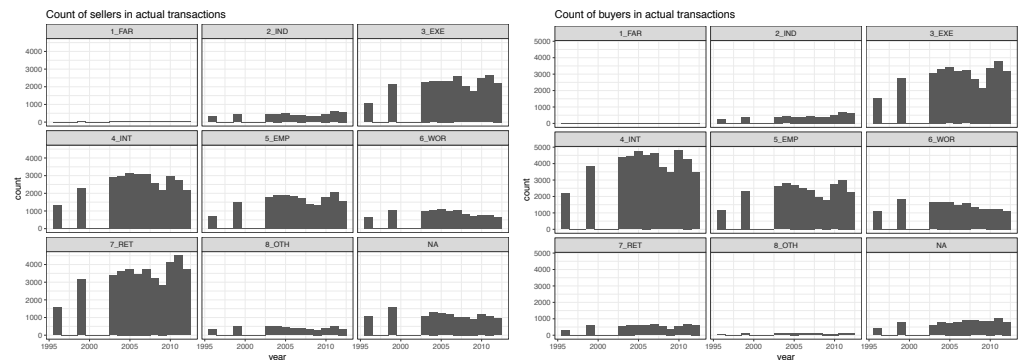


Fig 2. The average profile of sellers and buyers, 1996-2012 (Frequencies). 1 FAR : Farmer ; 2 IND Craftmen, business owners, independant workers ; 3 EXE : professionals, executives, academics, engineers ; 4 INT Intermediary occupations ; 5 EMP Salaried Employees ; 6 WOR Workers ; 7 RET retirees ; 8 OTH Other and unoccupied. Other categories e.g. Real Estate Professional and REITS set aside in the analysis (NA). Source : BIEN Database, PNS, 2012

... matched to a census grid using a travel-time matrix

For spatial analysis purpose, two final issues had to be dealt with : the weakness of samples when matched with small local geographies, and the fragmented structure of the built environment, made of subdivisions, large tract housing development, but also

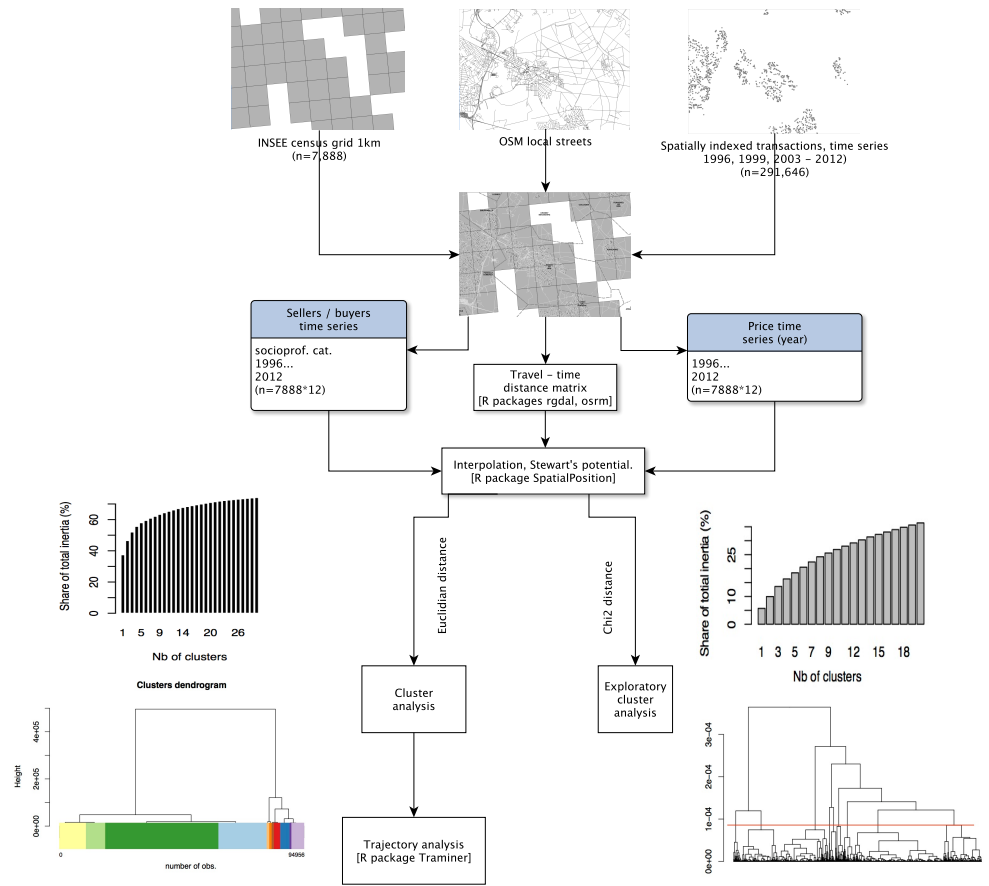


Fig 3. Data-flow diagram

detached houses scattered in semi-rural landscapes. To offset these limitations, a combination of a suitable grid and techniques of interpolation of point data was used.

Because of requirements regarding the confidentiality of individual transactions, it was impossible to use aggregates of less than 5 transactions. Given the spatial distribution of transactions, it is challenging to find any suitable geography that will allow us to render finer grain local dynamics and maintain the requirement for aggregating transactions. Given the spatial fragmentation of transactions in the outer peripheries, the problem remains when using larger spatial units, such as municipalities. The main analysis was conducted at a 1km-cell grid level as provided by the French census institute (INSEE) for local analysis. Fig 4 also highlights why the geography of municipal boundaries usually used to map property prices are inadequate in many cases in suburbia as it does not fit the actual geography of suburbanization and neighborhoods made of a mix of close-knit subdivisions and scattered countryside homes. As discussed in the literature, amenities, exclusivity, club realm and locational rent strongly interact in producing socioeconomic homogeneity at the neighborhood or subdivision level [123–126]. This grid combines three main advantages for a study of suburban areas (details provided in Appendix) :

1. A 1 km-cell can be considered as an appropriate proxy for homogeneous areas matching the fragmented suburban built environment. Although suburban municipalities are often small in size, an average of 820 inhabitants [67], several

subdivisions, with different characteristics of housing, are generally included within municipal boundaries (Fig 4). As earlier discussed in the literature review, visualizations and analysis are generally conducted at the municipal level, whereas the level of heterogeneity and submarkets would probably be best defined at the level of the subdivision, given that the combination of secondary street segments generally define local submarkets [120–122].

2. Because of protection of individual data and statistical secrecy, only cells for 11 inhabitants or more have been constructed into the spatial layer: by using it so, the analysis does not impute a value to areas that have no values, or no potential buyers or sellers. As a manner of clarification, many national forests, golf courses and other immutable land uses, large heritage landmarks (Fontainebleau, Versailles, Vaux-le-Vicomte...) have no population and therefore no potential housing value, but are also considered as valuable locational amenities that yield strong positive externalities for the valuation of homes.
3. Matching the "real estate agent paradigm", *i.e.* assessing price of a property with reference to nearby similar properties, the distance matrix for the interpolation uses a travel-time matrix between cell centroids: the potential values will be therefore imputed to the closest cells, making two nearby properties more likely to be priced equally (spatial interaction hypothesis) if cells are connected by local streets. As on Fig 4, with a radius of 10 min, spatial interactions for Ozoir-la-Ferrière will more likely occur with Roissy-en-Brie, while the barrier effect will not allow interactions with property values on the east side of Ozoir. In other words, a travel-time matrix better renders the barrier effects existing between neighborhoods and in municipalities, in fragmented built environments made of green belt and buffer zones between neighborhoods.



Fig 4. Sample of transactions, populated areas, road segments and 1 km grid compared. East-south-east of Paris (Val-de-Marne), nearby Marne-la-Vallée. Disneyland Paris is located north of this map. Source: OpenStreetMap 2016 ; INSEE 2016; BIEN Database, PNS, 2012

An interpolation of discrete socioeconomic data

The methodology also relies on an interpolation of discrete socioeconomic phenomena: prices and sellers / buyers occupational categories. Interpolation is a classical problem, that has been addressed when a continuous physical phenomenon is measured in random locations as is the case for temperature, altitude, wind surface. In many cases, the problem consists in mapping or visualizing a continuous surface where the phenomenon can be accurately estimated in all points, with a small number of actual measures. But the usual methods of spatial interpolation (e.g. triangulation, krigging, all based on sampling theories and inferential statistics) are unfit in the specific case of discrete phenomena [127]. Some solutions have been implemented on real-estate advertising websites, that deal with the problem of generalizing the information from transactions in a neighborhood. For instance, if we consider the industry's solution to "real world problems", the mapping engine of a website such as Meilleursagents.com renders a continuous surface of prices at a smaller scale, but when zooming on a specific suburban neighborhood either averages the property values at the municipal geographical level, or individuate the information by mixing different geographies on the same map : parcel / neighborhoods and municipal levels, depending on the significance of samples of sold properties (for example, in Versailles and its vicinity: <http://www.meilleursagents.com/prix-immobilier/versailles-78000/>).

We propose an alternative approach that computes a synthetic value based on distance and weight of the observed population, as initially proposed by Stewart [128] for an analysis of the distribution of student population and catchment areas of American Universities, and more recently applied for socioeconomic phenomena [129]. Stewart's potential can be considered as similar to spatial interpolation method such as IDW and kernel density estimator, estimating unknown values of non-observed points from known values given for every known measured values in a given location. But Stewart's model should more be considered as a spatial interaction model [130]. For social interactions, the most common formulation is the gravity model, that Tobler and Wineburg [131] generalized to many social facts: "distance may be in hours, dollars, or kilometers; populations may be in income, numbers of people, numbers of telephones and so on; and the interaction may be in numbers of letters exchanged, number of marriages, similarity of artifacts or cultural traits and so on" [131]. As in many fields in human geography, spatial interactions between house price, and variables describing the market structure, derive from a function of distance between i and j , a weight variable (e.g. population) P_i and P_j , and a constant depending of the phenomena. From this, we infer that property markets are discrete social data, similar to Tobler's hypothesis: a potential price for a specific location is a function of distance to nearby similar transactions, and also a function of the number of properties available, turnover and realized transactions. We can think of this problem by analogy, considering that market actors (i.e. real-estate agent, sellers and buyers) need to gather information on nearby transactions and homes to accurately price the advertised property, to efficiently negotiate pricing, to publicize the listed property, and for the sellers and buyers to engage in residential mobility, therefore expanding the concept of intervening opportunities [132] to a wide series of socio-spatial interactions on real-estate markets. This can be generalized into a more formalized hypothesis : the interactions between property values, between sellers and buyers, are a function of distance and a function of the number of properties and individuals (sellers / buyers) on the market. Grasland [129] has proposed a framework for spatial analysis of social facts, based on Tobler's first law of geography [133] and Stouffer's intervening opportunities [132], justifying to use Stewart's potential [128, 134] for the spatial interpolation of social discrete data. This method has been applied to demographic indices, therefore resolving the MAUP (Modifiable Areal Unit Problem) between the various incompatible local

geographies in Europe [127, 135].

We apply Stewart’s potential to house price, and also to the number of sellers and buyers of each occupational category (Fig 2), using the *SpatialPosition R* package [136, 137]. The potential of population is generally defined as a stock of population weighted by distance:

$$A_i = \sum_{j=1}^n O_j f(d_{ij}) \quad (1)$$

where A_i the potential of i , O_i the stock of population at j , $f(d_{ij})$ a negative function of distance, generally a power or exponential curve. Function parameters have been estimated by the means of semi-variograms. We have elected to implement a Pareto function, with a span of 10 minutes (travel-time by street network) and a β parameter of 0.27; α is defined as the distance where the density of probability of the spatial interaction function equals 0.5, as documented in the *SpatialPosition R* package [137].

$$f(d_{ij}) = (1 + \alpha \cdot d_{ij})^{-\beta} \quad (2)$$

with

$$\alpha = \log(2)/span^\beta \quad (3)$$

Applied to the number of sellers or buyers of each category, Stewart’s potential is computed as for a stock of population O . The computation of the price potential, however, follows a two step procedure : first, the potential for price is computed as the potential total value in a cell (Pp) ; then, the potential for the number of transactions (Pt) in a given cell is computed. The potential house price for a given cell equals to Pp/Pt , and then matched to a grid and mapped (Fig 5). To characterize change and local patterns of inflation, we apply a cluster analysis based on property prices.

Using annual sellers-buyers balance to analyze neighborhood change

With gridded interpolated variables, we perform a multivariate analysis to cluster neighborhood change, as outlined in Fig 3. The data do not allow us to analyze upward or downward mobility of households *per se*: the dataset describes the socio-occupational category of households (Fig 2), and do not allow us to trace households moving up by moving out. The same technique is also applied to determine the potential number of transactions within a 10 min. neighborhood for each category of sellers and buyers, for each given year. We apply the following steps to analyze changing balances between sellers and buyers for each category, and to compare the transitions and sequences of neighborhoods, revealing the differences in the dynamics of neighborhoods.

1. We use the information describing the sellers and buyers’ socio-occupational category : workers, intermediate occupation, salaried employees, executives, independent workers and retirees. To analyze social change, we focus on the local balance between sellers and buyers in each grid cell, for each category, for each year. By doing so, we adopt a design that assumes that segregation stems from the balance between groups moving from one place to another. As an example, Fig 6 shows the dynamics for two main categories of actors. Intermediary occupations are more active as buyers than sellers in the inner part of the region,

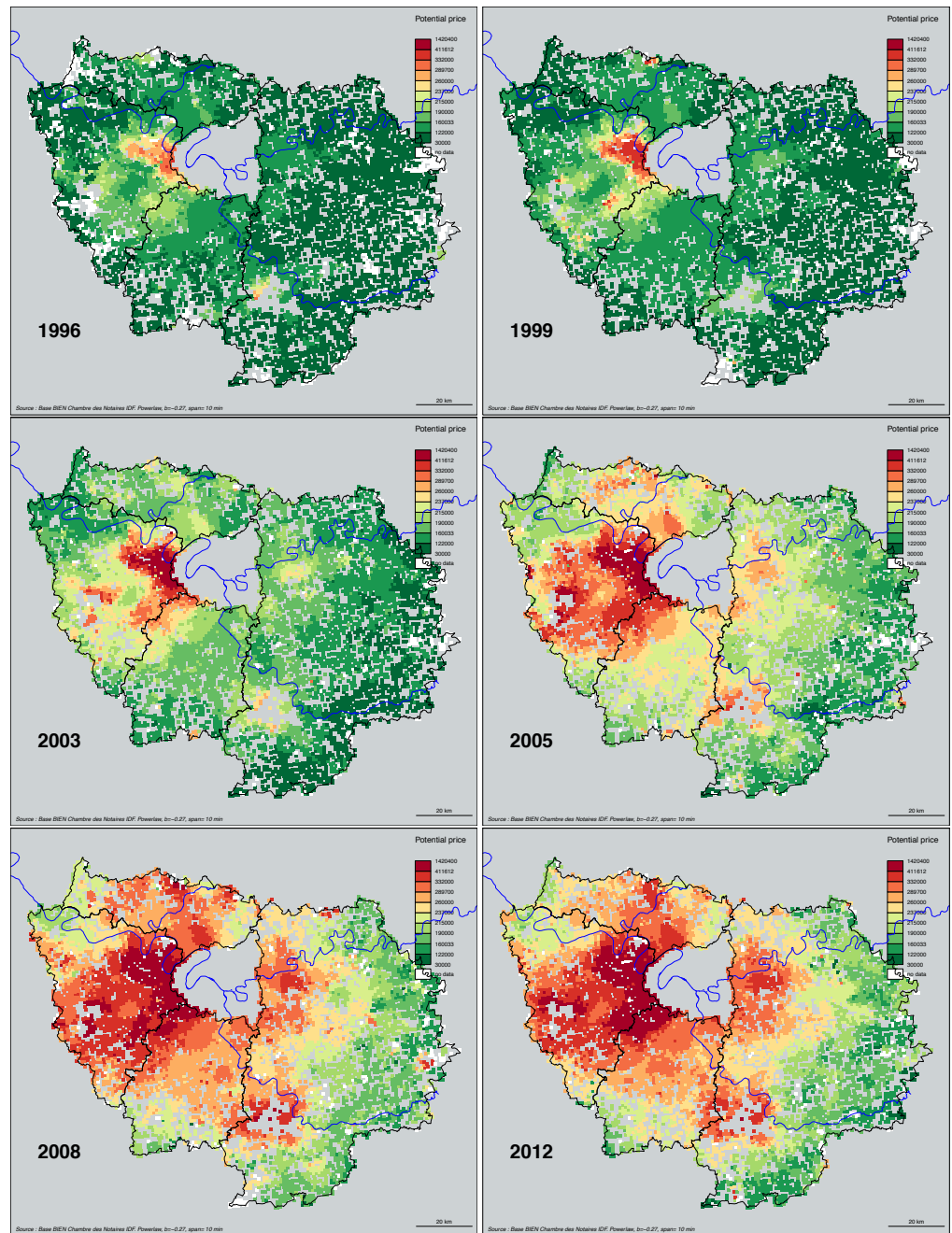


Fig 5. Potential price (EUR) of single family homes, within 10 min. neighborhoods. Selected years. Source: BIEN Database, Chambre des Notaires IDF, 2012. Interpolation with R *SpatialPosition* R package, Powerlaw $\beta = -0.27$, span=10. Author: R. Le Goix, 2016, UMR Géographie-cités, Labex Dynamite

whereas retirees show an exact opposite trend : in 2012, they are more likely to move and buy properties in the outskirts and exurbs, leaving the mature suburbs of the first rings. We also analyzed the matrix of correlations between the proportion of buyers and sellers of each category, showing the main effect of inertia (*cf.* correlation matrix in S2 Fig appendix). Because of the structure of

exclusive trends (executives selling to executives ; workers and employees more likely to sell to workers and employees), we deem that the balance between transactions are good indicators of local change.

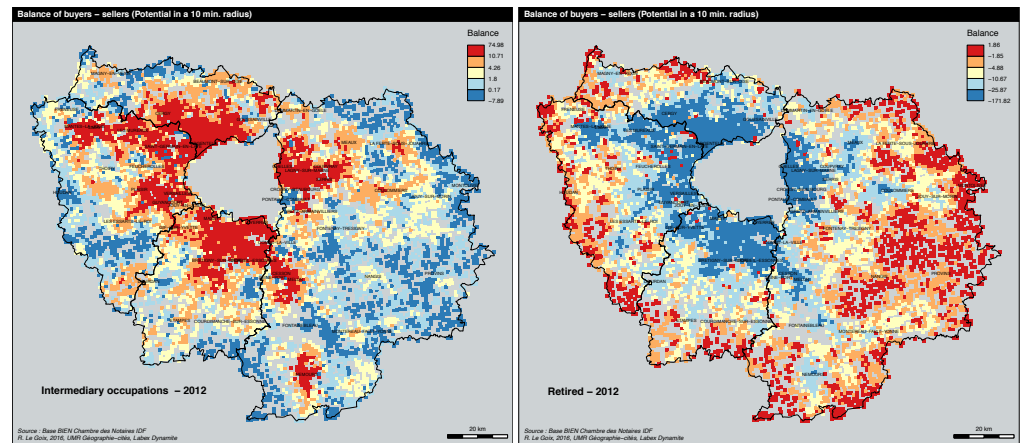


Fig 6. Sellers – buyers balance in 2012. A: Intermediary occupations. B: retirees. Source: BIEN Database, Chambre des Notaires IDF, 2012. Author: R. Le Goix, 2016, UMR Géographie-cités, Labex Dynamite

- Second, using sellers-buyers balance by categories as input variables describing each cell, a cluster analysis (ward method, euclidian distance) describes the categories for each neighborhood at each given date, assuming the different socio-occupational net balances are significant in analyzing local trends. Because of the large number of permutations (94956 rows and 7 variables), we opted for the *fastcluster* library that implements a more efficient though very stable algorithm [138].

We finally elaborated on a method implemented to sort out neighborhood change in US metropolitan areas [139, 140]: we analyze the longitudinal categorical sequences of neighborhoods, applying sequential pattern mining procedures. For this we used the R TraMiner package algorithms [141] to sort out and describe the successive sequences of states for each neighborhoods, for each given year. The method sorts out the most frequent permutations found in the sequence of states for each neighborhood, so as to analyze local change as a series of sequences or permutations between different states. A clustering method was applied to aggregate the sequences into a number of groups. For that purpose we used the *agnes* function (Cluster library) of the TraMiner package.

Results and discussion

The results of the study provide a thorough spatial analysis of property ownership change, property value trajectories and permutations of dwellers' occupational categories as components of neighborhood change between 1996 and 2012. First, we present and discuss the results for the dynamics of property values over time, in order to better contextualize the unequal home value inflation in which transactions are taking place. Second, the main trajectories of property value growth and decline are summarized by the means of an exploratory cluster analysis. Third, we classify the cells describing neighborhoods by sellers-buyers balance for each category at each date, and analyze the longitudinal categorical sequences of neighborhoods between 1996 and 2012.

Suburban home value dynamics: generalized but unequal inflation

Regarding home price inflation between 1996 and 2012 [1], data show an interesting combination of two trends: a constant appreciation in the entire region, and an apparent homogenization of prices towards the higher brackets of property values above 200,000 Euros (Fig 5. For an animated visualization *cf.* S3 Fig Appendix).

The spatial patterns of price inflation showed mixed and heterogeneous tendencies. To explore the resulting dataset, we use gridded potential price for each year as variables into a χ^2 metric hierarchical cluster analysis, that yields more detailed local tendencies than the univariate trends summarized by deciles and quartiles in Fig 1). Cluster profiles of price inflation are reported in Fig 7 : blueish colors describe the trends of highest price brackets (above 300,000 euros), green colors corresponds to median price brackets, and reddish colors describes lowest price brackets. The general trend is that price inflation has affected almost every suburban context, but it has also increased spatial heterogeneity between neighborhoods. Inflation has also strengthened the unequal spatial structure of prices and the hierarchy of neighborhoods. The spatial structure of unequal price growth over time follows 7 distinct trajectories:

- First, the hierarchy of neighborhood price brackets was maintained and strengthened between 1996 and 2012. Data show an increased gap between lower brackets and upper brackets : the average price between cheapest neighborhoods and expensive suburban neighborhoods has increased, with an interval of 150,000 euros in 2012, against 50,000 euros in 1996, as shown between *clusters 1 & 3*, describing the extreme values of the price spectrum in purple and blue colors.
- In *cluster 3* more expensive high-end neighborhoods near Versailles, Saint-Germain-en-Laye, Fontainebleau, Coupvray better recover from the 2007-2008 crisis, compared to furthest neighborhoods similarly priced in 2007, but experiencing a substantial value gap after 2007 (*cluster 4*). Such neighborhoods are those that better control their local environment, land availability, and develop local strategies of territorial control, exclusion, and club economy, in order to protect local tidiness and social homogeneity, as discussed by Charmes [67] in his essay on the clubbization of French Periurban municipalities.
- We also notice a slower price appreciation in average price contexts, in *clusters 2, 5, 6, 7 and 8*. All have similar prices between 1999 and 2006, then each of these clusters follow distinct trajectories after 2007. *Cluster 8* for instance describes areas of mature subdivisions in the outer-suburbs built between 1970 and 1990, such as Cergy, Les Mureaux on the West-side ; Goussainville, Meaux on the North-East side ; Lagny, Coulommiers on the East part of the region ; Cesson, Melun to the South : although properties lost an average of 25,000 Euros during the crisis, the recovery was complete in 2011, up to 275,000 euros for a typical suburban tract home. This trend is almost similar to trajectories followed by neighborhoods in furthest location like in Thoiry (*cluster 6*), but the depreciation of values started earlier. In remote areas with a mix of exurban and rural settlement, as well as in small peripheral towns such as Provins and Houdan (*clusters 5 and 7*), very slowly but not entirely recover after 2007. Neighborhoods described by *cluster 2* (Nangis, Nemours, Magny, Etampes) however show an incomplete recovery of residential markets.
- Lower price brackets also tend to depreciate after 2007: data show a slow depreciation in lower priced neighborhoods (as in *clusters 1, 7, 9, 10*, see the purple, red, orange lines after 2006). *Cluster 1* shows a common pattern of

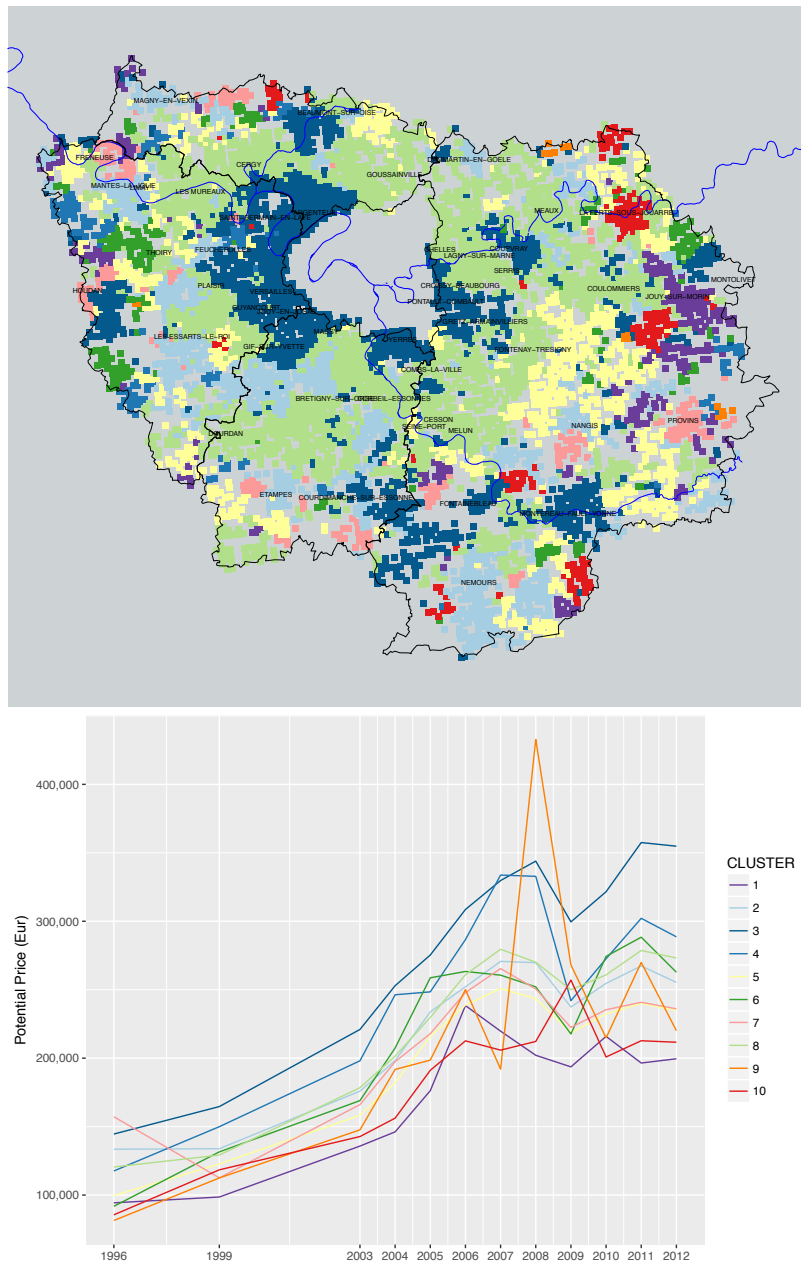


Fig 7. Typology of house price dynamics, 1996-2012. A: Map of clusters. B: Profiles of average home values by clusters. HCA of potential prices, χ^2 metric, Ward method, $r^2 = 25\%$. Source: BIEN Database, Chambre des Notaires IDF, 2012. Author: R. Le Goix, 2017, UMR Géographie-cités, Labex Dynamite

absolute continuous depreciation starting with the global real-estate and financial crisis as soon as 2007, mostly in the far-eastern part of the region (Jouy-sur-Morin). In other cases, such as *cluster 10*, the depreciation started only after 2009, which describes remote exurban areas e.g. La-Ferté-sous-Jouare. This depreciation of lower-end neighborhoods even yields very volatile trends in the furthest peripheries in the lowest brackets of property prices after 2007 as in *cluster 9*, although outliers, rare and exceptional transactions may produce such

volatile local trends. Such decreasing trends, although sometimes interpreted as a long awaited stabilization of markets and good news for affordability, are however inherently burdens that put indebted households at risk: their financial vulnerability will link the depreciation of assets and negative equity. Many local contexts follow such unsustainable patterns. These declining tendencies highlight the lack of sustainability of some remote suburban neighborhoods and subdivisions. Such trends inform how households in maturing and lower-end subdivisions may be trapped in place [142] by decreasing property values, which compromise their capacity for reinvestment because of devaluation and even negative equity ; whereas other comment the depreciation and decline of furthest away subdivisions, rendered obsolete by increased energy costs that impacts the burden of daily commuting and shopping trips by car [1].

These first series of results show common grounds with trends identified in more central places: where generalized inflation has strengthened the unequal spatial structure of price and the hierarchy of neighborhoods. Suburban housing however shows a greater tendency to follow heterogeneous trends, compared to more central locations. The center of Paris and its inner suburbs are more likely to show more homogeneous prices because of inflation [11, 111]. Consistent results have been found by Boulay (2012) in Marseille [9].

A typology of sellers-buyers balance

We now examine the results of the typology of sellers-buyers balance to analyze neighborhood change in connection with the variegated local trajectories of inflation. The main goal of this typology derives from the overarching hypothesis of the research: rather than dualization (executives vs. workers), professionalization (a rise of executives, intermediate occupation and salaried employees) more accurately describes the dynamics of property ownership in suburbs, in close connection with local trajectories in price appreciation (H1).

The typology describing the states of each neighborhood for any given year derives from a multivariate analysis (hierarchical cluster analysis, euclidian distance, Ward method, $N=7888$ cells * 12 years, solution with 11 clusters, $r^2 = 61\%$). Each cluster is described according to the z-scores (Fig 8) and mapped in grid cells (Fig 9). For an animated visualization of the typology, cf. S4 Fig Appendix.

The eleven clusters describe different stages of stability, maturity, or rapid change in neighborhoods. Each cluster, for any given year, describes the significant socio-occupational categories balance between sellers and buyers ; clusters are interpreted as a momentum between sellers and buyers, *i.e.* a change in balance compared to the average profile described on Fig 2. A first series of clusters is overrepresented, as on the dendrogram on Fig 9, and are variations close to the average profiles. *Cluster 1* describes an average profile of neighborhoods, characterized by a complete stability of socioeconomic profiles across all socio-occupational categories: z-scores indicate a light trend of maturing population with more retirees moving in neighborhoods that can be described as stable and maturing exurbs, villages and rural areas with residential settlements made of scattered single family homes. This is the only spatial context in which retirees showed a positive balance : as in Fig 2, retirees were moving out of the Paris region, selling more than they bought. In exurban subdivisions and suburban areas, *Clusters 2 and 3* are variations in trends and magnitude of this average stable profile, characterized by the average dynamics described on Fig 2, *i.e.* intermediate occupations and executives having been the main actors with a positive balance as buyers. As on the maps, *cluster 2* best describes *stable exurban markets*, whereas *cluster 3* clearly delineates an average suburban profile where

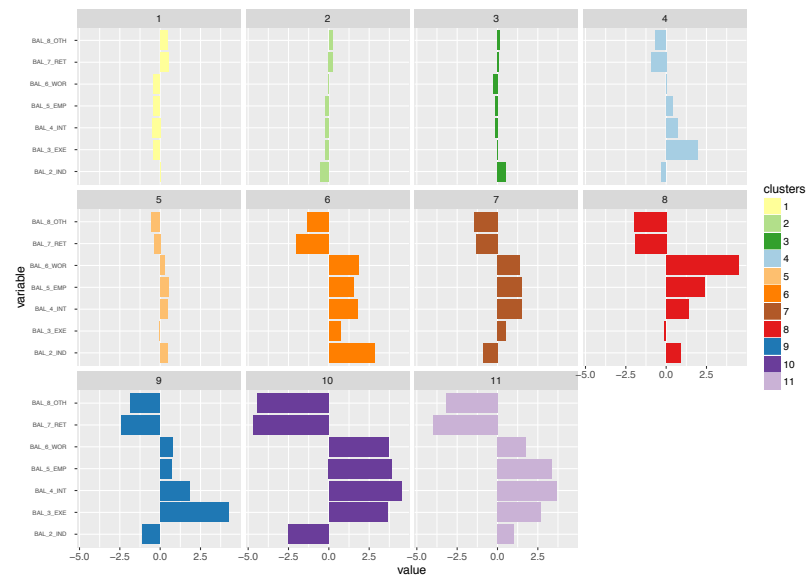


Fig 8. Typology of sellers and buyers balance, in single family homes in Ile-de-France, 1996-2012: normalized z-scores of variables by clusters. Selected years. Source: BIEN Database, Chambre des Notaires IDF, 2012. HCA, euclidian distance, Ward method, N=7888 cells * 12 years, solution with 11 clusters, $r^2 = 61\%$. 1 FAR : Farmer ; 2 IND Craftsmen, business owners, independent workers ; 3 EXE : professionals, executives, academics, engineers ; 4 INT Intermediary occupations ; 5 EMP Salaried Employees ; 6 WOR Workers ; 7 RET retirees ; 8 OTH Other and unoccupied. Other categories e.g. Real Estate professionals and REITS set aside in the analysis (NA). Author: R. Le Goix, 2017, UMR Géographie-cités, Labex Dynamite.

intermediate occupations and executives were leading actors on both selling and purchasing markets. Neutral z-scores demonstrate that these trends correspond to the regional average, with however less blue collar workers and relatively more craftsmen and business owners (2_IND) in *cluster 3*. In *Cluster 4*, executives moving in the areas are however overrepresented, all other variables remaining around the average profile.

In other neighborhoods, data show selective patterns of instability, more change specifically described by overrepresented socio-occupational categories, with moderate dynamics driven by intermediate occupations and to some extent independent workers and craftmen, in mixed inner suburban markets, that were less attractive for executives, a group more likely to move out of these areas (*Clusters 5 & 6*). *Cluster 7* describes inner suburban neighborhoods with a steady influx of the middle-class (intermediary occupation and employees), exclusive of other categories.

Finally, in some areas, very rapid change has been produced by an overwhelming influx of some socio-occupational categories, mutually exclusive of others. *Cluster 8* is clearly characterized as the last refuge of blue collar workers in heavily deindustrialized region: these were the last neighborhoods in which the dynamics of workers as buyers superseded the dynamics of workers selling properties. *Cluster 9* is clearly defining places where social change was produced by a strong and significant balance favoring the arrival of professionals, executives, academic and engineers. It better defines places in which urban renewal, gentrification, and also the patterns of employment and transportation has made the housing stock more attractive to this social group. Often spatially associated with *cluster 4*, *cluster 9* is an avatar of the suburban golden ghetto. *Cluster 10* describes a very dynamic very mixed market: a common trend characterized by an overrepresentation of all categories: workers, salaried employees, intermediary

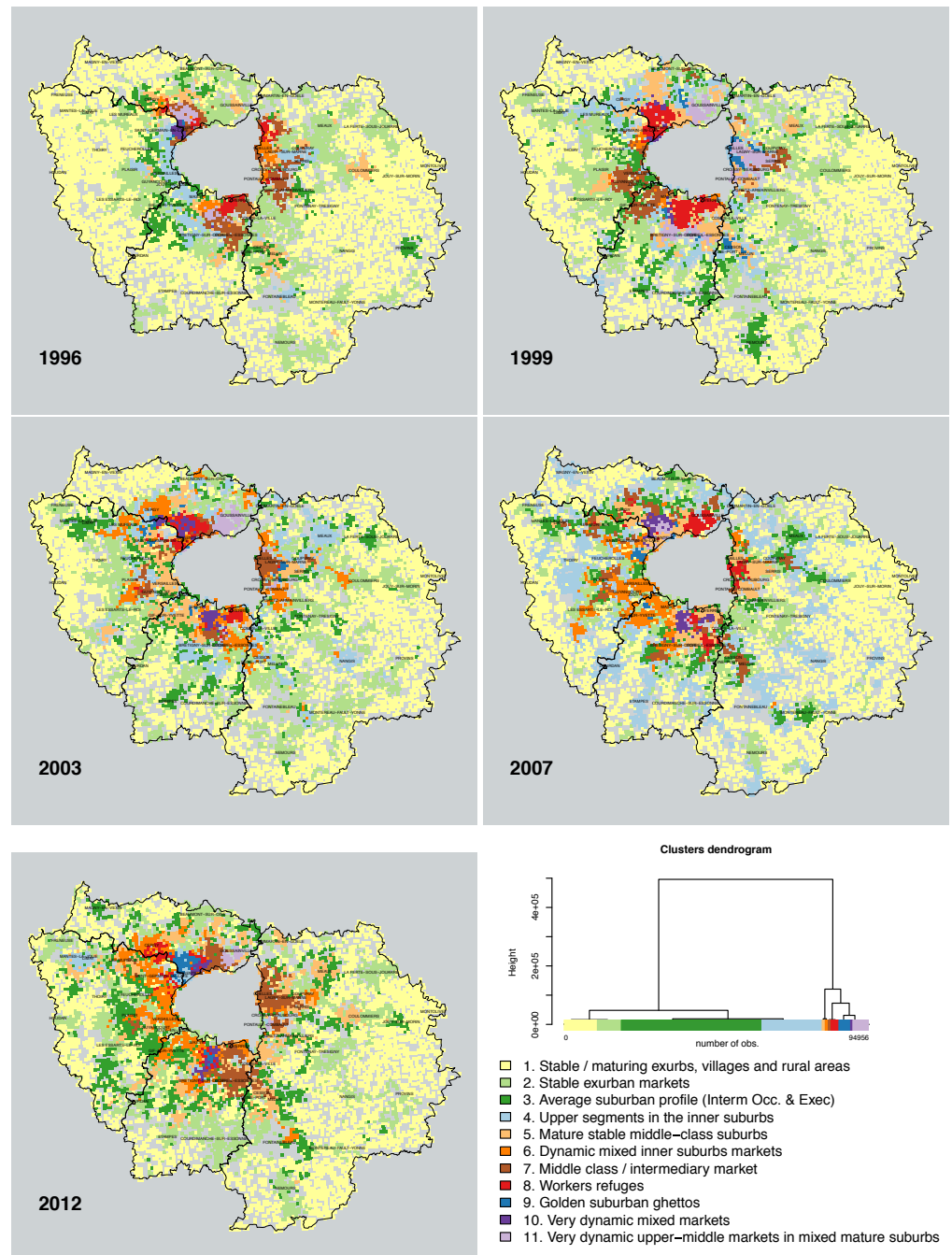


Fig 9. Typology of sellers and buyers balance, in single family homes in Ile-de-France, 1996-2012. Selected years. Source: BIEN Database, Chambre des Notaires IDF, 2012. HCA, euclidian distance, Ward method, $N=7888$ cells * 12 years, solution with 11 clusters, $r^2 = 61\%$. Author: R. Le Goix, 2017, UMR Géographie-cités, Labex Dynamite.

occupations, professionals and executives, all with strong positive balances, against retirees, massively selling in this diverse active market. Such trends are likely to be found in areas of rapid change in the built environment (renewal and infill development).

Cluster 11 is a variation of *cluster 10*, with an overrepresentation of salaried employees and intermediate occupations as buyers more than as sellers.

This partition demonstrates the validity of hypothesis #1 (professionalization as a driver of change in socioeconomic segregation), as increased numbers of executives, intermediate occupation and salaried employees are predominant actors on the markets, as sellers, and also as buyers, the differentiated impact of these three categories being well circumscribed by the cluster analysis. Hypothesis#3 is also well supported by the analysis: sub-centering, deindustrialization and the maturity of suburbanization yield a very structured and highly diversified pattern of segregation. It is also clear from the comparison between prices (Fig 7) and the balance between sellers and buyers (Fig 9) that not only changes in socio-professional structure explain segregation, but households are sorted out between neighborhoods according to the variation of prices, the variegated patterns of asset capitalization in real estate value (Hypothesis#2). From this analysis, we conclude, with Preteceille [52, 57], Clerval and Delage [56], that the classical division white collars (executives / employees) *vs.* blue collars (workers) does not allow us to fully comprehend the social dynamics in the peripheries of Paris. This critique is also to be extended to the methodology employed in research on socioeconomic change, using classical segregation indices. Such indices were initially developed to study segregation patterns between racialized groups [143]. This method can be to some extent misleading when referring to dual patterns of socio-economic segregation, applied to a commonly used divide in the analysis of socioeconomic segregation patterns [13]: such research is classically constructed to juxtapose opposite groups on the socio-professional spectrum e.g. workers *vs.* executives [51, 79].

Longitudinal categorical sequences of neighborhoods show an increased socioeconomic diversity

Given the aforementioned sellers-buyers typology, described for each given year, the last series of results derive from the sequencing of consecutive states for each neighborhood. The R *TraMiner* package algorithms [141] were designed to sort out and describe in sequences the successive states of neighborhoods: this allows us to analyze local change as sequences and permutations between different states. To better map the trajectories of the sellers-buyers balance, we use this as an exploratory tool, adding values to the more static cartography (Fig 9 and animated version in Fig S4 Fig Appendix). The main results are described on Fig 10 with descriptive statistics on modal categories: data show that mostly rural and exurban categories *clusters 1 and 2*) are overrepresented, with an increased share over time of *cluster 3* (average suburban profile), *cluster 4* (upper segments in the inner suburbs) and *cluster 5* (mature stable middle class suburbs). An assessment of the relevance of such an analysis is provided by the entropy index on 10, which is a "measure of the diversity of states observed at the considered time point" [141, p. 67]. We note that between 2007 and 2009, there was a decrease in diversity in the typology, followed after 2009 when the market recovered by a significant increase in diversity of state permutations. This can be interpreted as a result of market adaptations to the global 2007-08 real-estate and financial crisis. The crisis had lesser ramifications in France compared to other OECD countries, however, the results on the distribution of sellers and buyers has been a stabilization of the market with a lower level of variety in transactions in suburbs. The dynamics of the market, in terms of diversity of socioeconomic profiles and potential for local change, increased when the market recovered after 2009. This increased diversified pattern of segregation supports hypothesis #3.

Finally, a last exploratory hierarchical clustering was also applied to the neighborhood sequencing. For exploratory analysis, the goal was to summarize the

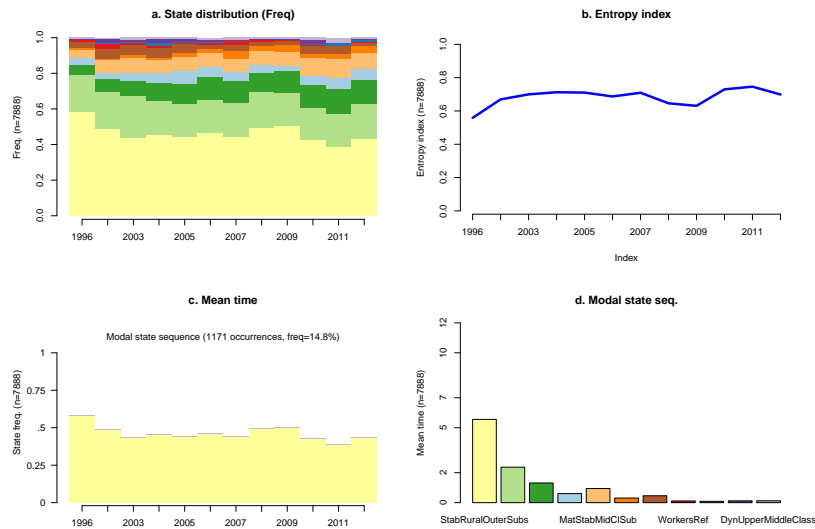


Fig 10. Descriptive statistics of the sellers-buyers typology sequence analysis of neighborhood change. Prepared with R package TraMiner 2.0-8. Source: BIEN Database, Chambre des Notaires IDF, 2012.

results of the sequence analysis and to aggregate the sequences into a reduced number of groups. Results, summarized into 6 clusters, as on Fig 11, account for 65% of the variance.

- A vast majority of exurbs and outer suburbs show extremely stable patterns over time between 1996 and 2012 (54% of sample). Stability in profiles is explained by a constant influx of retired persons moving in neighborhoods, in areas that can be described as stable and maturing exurbs, villages and rural areas with scattered estates and small subdivisions (*sequence type 1*, $n=2746$). Exurbs *sequence type 2* ($n=1533$) are characterized by the withdrawal of retirees from the exurbs, offset by a net inflow of intermediate occupations and executives being the main actors with a positive balance as buyers in stable markets.
- In the early 2000, average suburban profiles (*cluster 3*) and stable exurban markets (*cluster 2*, 32% of the cases) transitioned, following two individual trajectories. First, many transitioned from type 3 to type 2 in the early 2000s, or during the pre-crisis years in 2006-07 : most of these neighborhoods progressively stabilized after 2007 (*sequence type 3*). Second, their dynamics were characterized by transitions towards *cluster 5* (mature middle-class suburbs) and type 7 (intermediary markets) in *sequence type 4*, in what can be described as dynamic markets. The majority of transitions occurred at two periods of time: between 1999 and 2003 ; and after 2009. As described by the overall entropy index between 2005 and 2009, these neighborhoods stabilized with a much lower probability of transitioning (Fig 10).
- On their own course, the transitions depicted in sequence type 5 ($n=656$, 8.5%) show the highest level of entropy. Starting with a diversity of characteristics, e.g. intermediary markets (*cluster 7*), workers refuges (*cluster 8*), very dynamic mixed markets (*cluster 11*), volatile inflation dynamics clearly fueled a general transition toward dynamic mixed inner suburban markets (*cluster 6*), characterized by a net inflow of intermediate occupations and to some extent independent workers and

craftsmen. In other words, it seems that our research strategy yields a clear depiction and characterization of dynamic middle-class inner suburbs with patterns of asset capitalization, supporting hypotheses #2.

- Finally, in *sequence type 6* (n=359, 4.5%) neighborhoods already in the upper segments in the inner suburbs showed, unsurprisingly, some very stable profiles, and were characterized by the lower proportion of retiree home sales, and a higher proportion of purchases by professionals and executives. They were likely to transition to more exclusive "golden suburban ghettos", especially between 1999 and 2003, with growth exclusively fed by the influx of executives and professionals. They occasionally transitioned downward, coming to more stable profiles – type 3, in green in 2009 –, that we interpret as a stabilization of the market in the aftereffects of the financial crisis on real-estate markets: many households and real-estate agents were in 2008 expecting the effects of the crisis in France, before the Sarkozy administration took action to aggressively subsidize residential markets with fiscal incentives policies for middle-class and upper-middle-class first-time buyers.

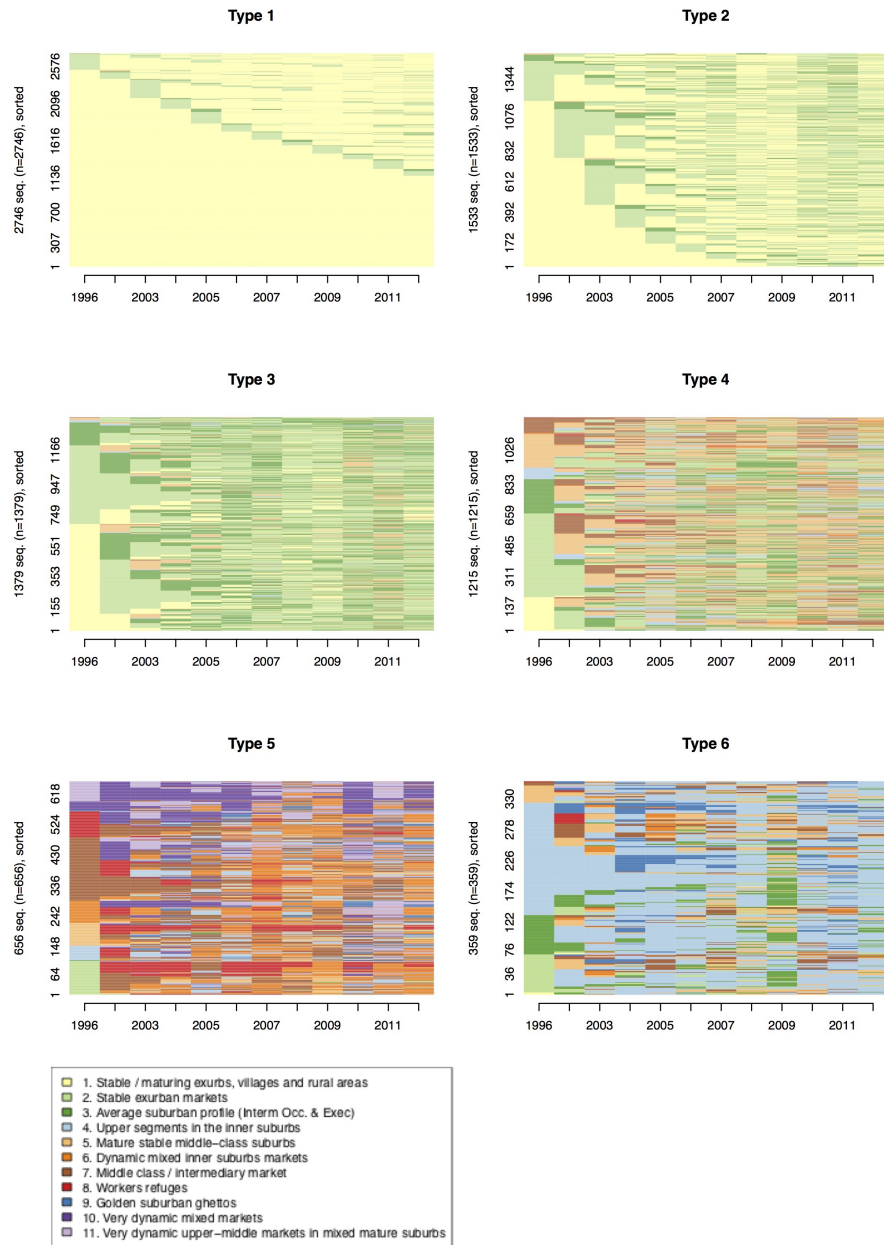


Fig 11. A typology of sequence analysis to explore sellers-buyers dynamics neighborhood change. Prepared with R package TraMiner 2.0-8. Source: BIEN Database, Chambre des Notaires IDF, 2012.

Conclusion

The main goals of the study were to attempt an analysis of social change with individual-level data, in a property owners market, not relying on census data but on inward and outward flows of sellers and buyers). The study provides an analysis of the high level of variability and discrete characteristics of suburban property markets that can hardly be described by over-simplified categories and narratives on suburbanism and spatial relegation of the middle-class, as often found in the French language

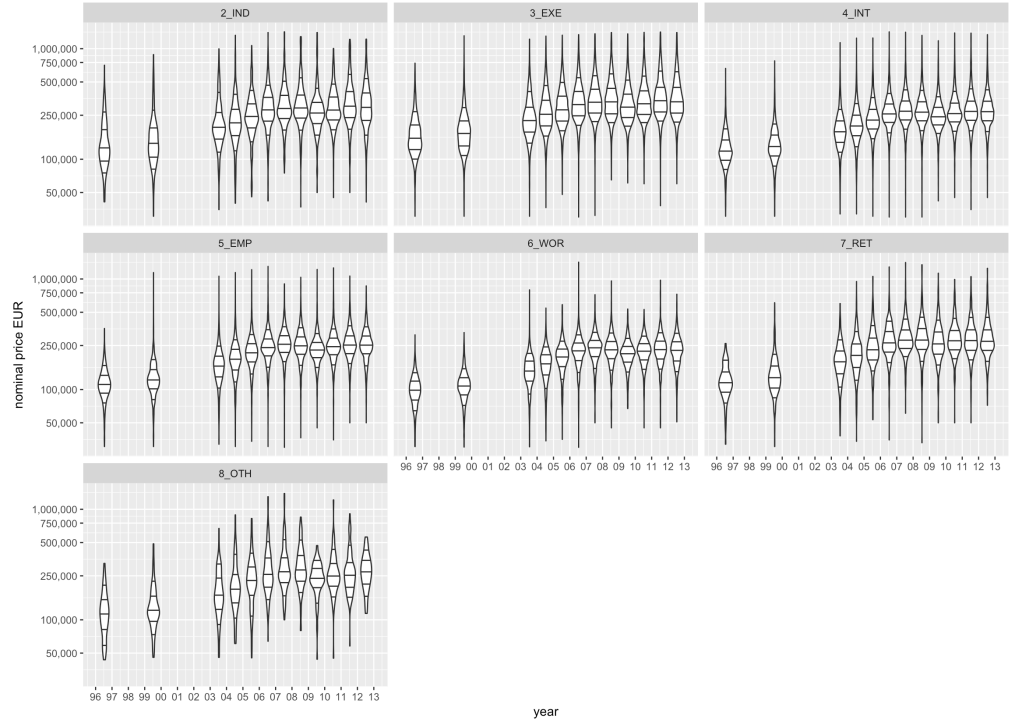
literature [79, 80].

The main results allows us to get a better understanding of the shapes and spatial dynamics of inequalities in suburbs in the region of Paris. We document the spatial patterns of professionalization (a rise of executives, intermediate occupation and employees) to describe the main trends of inward mobility in property ownership in suburbs (Hypothesis #1), offsetting the outward mobility of retired persons, as sellers, and also the decline of salaried employees and blue collar workers in transactions, except in highly specialized suburbs, the last refuges of the working class in a desindustrialized metropolitan region. In a context of price inflation driven by housing finance regimes and the expansion of credit, we do so by explicitly linking the diverging patterns of appreciation, between local contexts of accumulation with a steady growth of residential prices, and suburbs with declining trends, especially after 2006. In a striking affordability crisis between 1996 and 2012, some suburbs were more likely to attract households building up wealth accumulation through residential real-estate and home values, whereas others became risky contexts with declining values, and for indebted households, negative equity. Volatility of prices and vulnerability of households has progressively clustered in the lower brackets of prices. While increased values and accumulation in well-off neighborhoods of the west-side were expected, we also characterized patterns of asset-accumulation in the inner suburban middle-class, a lesser known dimension (Hypothesis #2). We finally contextualized the study in order to inform how the maturity of suburbanization in the metropolitan region yields a diversified structure of segregation between the different social classes during the last two decades, that cannot simply oppose rich vs. popular suburbs (Hypothesis #3). It is clear from the different typologies that the maturation of suburbanism has played a role in structuring the stabilization of a vast majority of suburbs and exurbs, while many suburbs also show very active dynamic markets fueled by price inflation and households asset capitalization, not only in the upper-segment, but also in the medium segments.

This analysis forms the basis of a new research agenda, not only in France (ANR WIsDHoM 2019-2022 project "Wealth inequalities and the dynamics of housing market. Interpreting real-estate market-based regime of spatial inequalities") but more generally in European cities (2018-19 ESPON exploratory program "Big Data for Territorial Analysis and Housing Dynamics"). Because of residential price inflation during the last decade and after the 2007-08 housing and financial markets crisis, it is estimated that 7% of the EU 28 population faced housing costs that accounted for more than half their disposable income. We deem relevant to measure the financial effort (including data on income and assets), its spatial structure and its distribution among social categories. In this context, it is critical to geographically analyze this ordinary financialization [144] of the "actually existing" real-estate markets [145, 146] for tentative buyers and homeowners : i.e we will spatially analyze wealth dependency of households to market fluctuations, and the increasing necessity for homeowners to behave as asset managers due to the role of housing wealth to secure life trajectories [25]. Using transaction-based spatial datasets, the diversity of trajectories on markets at local levels have been described since the 1990s. Inequalities in terms of financial effort (price vs. income) have increased, while lower-income households have not been excluded from the homeownership market, but displaced in suburbs or rural areas. In further research, using the grid system (conform with the INSPIRE specifications) will allow comparison between the results and methods hereby discussed, and other public data that will progressively be released for this geographical level (e.g. population, income, age...). In order to characterize the local conditions of housing market, we will map the spatial dynamics of the financial effort of households and the unequal dynamics of local affordability, using similar techniques and gridded real-estate data, to harmonize different heterogeneous datasets across cities in Europe.

Supporting information

S1 Fig. Density plot of house values, in Euros, for each categories of buyers 1996-2012. Violin plots represent kernel density estimates. Thresholds defined as 1st decile, first quartile, median, third quartiles and 9th decile; price scale, \log_{10} . Author: R. Le Goix, 2018, UMR Géographie-cités, Labex Dynamite.



S2 Fig. Pearson correlation matrices (heatmaps) for percent sellers and buyers in 1996, 2003 and 2012. Author: R. Le Goix, 2018, UMR Géographie-cités, Labex Dynamite.

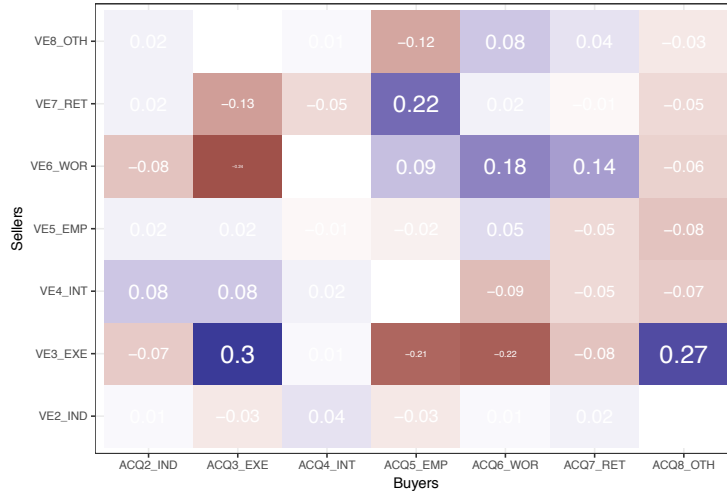
S3 Fig. [https:](https://www.dropbox.com/s/mqyj4bdvdh8zhuv/S3_Fig_animated_price_GIF.gif?dl=0)

Potential price (EUR) of single family homes, within 10 min. neighborhoods (animated). Source: BIEN Database, Chambre des Notaires IDF, 2012. Interpolation with R *SpatialPosition* R package, Powerlaw $\beta = -0.27$, span=10. Author: R. Le Goix, 2017, UMR Géographie-cités, Labex Dynamite.

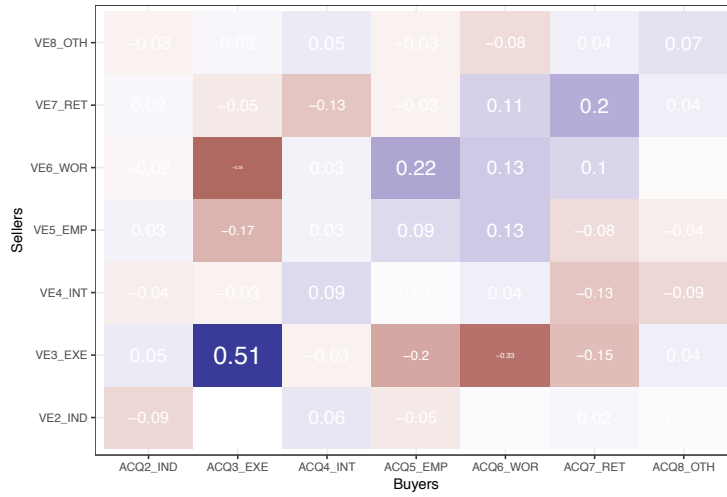
S4 Fig. [https:](https://www.dropbox.com/s/lm9uhvdom0x8fc/S4_Fig_animated_typol_GIF.gif?dl=0)

Typology of sellers and buyers balance, in single family homes in Ile-de-France, 1996-2012 (animated). Selected years. Source: BIEN Database, Chambre des Notaires IDF, 2012. HCA, euclidian distance, Ward method, N=7888 cells * 12 years, solution with 11 clusters, $r^2 = 61\%$. Author: R. Le Goix, 2017, UMR Géographie-cités, Labex Dynamite.

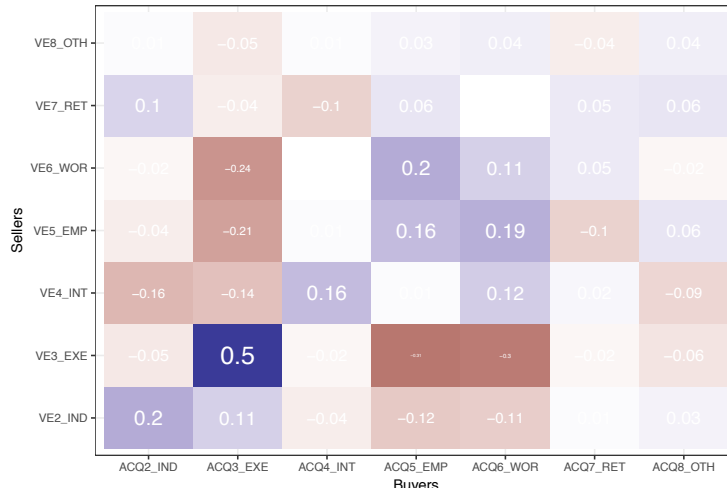
1996 – Correlation plot



2003 – Correlation plot



2012 – Correlation plot



Acknowledgments

This paper was prepared under the LabEx DynamiTe (ANR-11-LABX-0046) consortium, workpackage "the production of the ordinary city", which is gratefully acknowledged.

The transactions BIEN proprietary database was made available by Paris Notaire Service, on the behalf of the Chamber of the Notaries, under an agreement contracted by the LabEx DynamiTe (ANR-11-LABX-0046) and the Univ. Paris 1 Pantheon-Sorbonne. Data provided by the INSEE (1 km grid) contains public sector information, made available under ©INSEE, 2013.

The authors wish to thank Boulay Guilhem and Laure Casanova-Enault, Université Avignon-Pays de Vaucluse & UMR ESPACE, as well as Loïc Bonneval, Université Lyon 2 & UMR Centre Max Weber, for their contribution to the collective work of drafting the WIsDHoM project (Wealth Inequalities and the Dynamics of Housing Market. Interpreting real-estate market-based regime of spatial inequalities): this present paper stems from this collective thinking and joint theoretical effort, and shall be acknowledged. And infinite thanks to William Kutz for his proofreading, and to the Menthonnex #AcWri team.

References

1. Friggit J. Prix immobilier - Evolution 1200 - 2017; 2017. Available from: <http://www.cgedd.developpement-durable.gouv.fr/prix-immobilier-evolution-1200-a1048.html>.
2. Tutin C. Volatilité, exubérance et stabilité, trois modèles du marché du logement en Europe. *Etudes Foncières*. 2013;(165):55–60.
3. Tutin C. Bulle spéculative ou changement structurel ? *Etudes Foncières*. 2013;(165):41–42.
4. Timbeau X. Les bulles "robustes", pourquoi il faut construire des logements en Île-de-France. *Revue de l'OFCE*. 2013;128. doi:sciencesconf.org:afse2016:114890.
5. Aalbers MB. The Sociology and Geography of Mortgage Markets: Reflections on the Financial Crisis. *International Journal of Urban and Regional Research*. 2009;33(2):281–290. doi:10.1111/j.1468-2427.2009.00875.x.
6. Kim KH, Renaud B. The Global House Price Boom and its Unwinding: An Analysis and a Commentary. *Housing Studies*. 2009;24(1):7–24. doi:10.1080/02673030802550128.
7. Langley P. Securitising Suburbia: The Transformation of Anglo-American Mortgage Finance. *Competition & Change*. 2006;10(3):283–299. doi:10.1179/102452906x114384.
8. Driant JC. Enjeux et débats des politiques du logement en France. *Revue d'économie financière*. 2014;115(3):189–208. doi:10.3917/ecofi.115.0189.
9. Boulay G. Real estate market and urban transformations: spatio-temporal analysis of house price increase in the centre of Marseille (1996-2010). *Articulo - Journal of Urban Research [Online]*. 2012;9(2012). doi:10.4000/articulo.2152.
10. Le Goix R, Boulay G, Callen D, Derambure-Dutel F, Reys A, Giraud T, et al. Marchés immobiliers et zones critiques : une analyse du changement social en relation avec la dynamique des valeurs immobilières. In: Cist, editor. *Colloque*

”En quête de territoire(s) / Looking for territories”, 17-18 mars 2016;. Available from: <https://hal.archives-ouvertes.fr/halshs-01351291v2>.

11. Boulay G, Guerois M, Le Goix R. Acquéreurs et vendeurs dans l’inflation immobilière : une analyse des trajectoires locales à Paris et Marseille (1996-2006). In: Pumain D, Mattei MF, editors. *Données Urbaines*. vol. 6. Paris: Anthropos / Economica; 2011. p. 167–179. Available from: http://halshs.archives-ouvertes.fr/halshs-00643569/PDF/ArticleDU6_boulaygueroislegoix.pdf.
12. Desponds D, Bergel P. La mauvaise réputation. Distance aux ZUS et prix de l’immobilier : application d’un modèle hédonique à six intercommunalités franciliennes. *Cybergeo : European Journal of Geography*. 2014;Espace, Société, Territoire(673). doi:10.4000/cybergeo.26283.
13. Tammaru T, Ham MV, MarcińCzak S, Musterd S. *Socio-economic segregation in European capital cities : East meets West*. Regions and cities. Abingdon, Oxon ; New York, NY: Routledge; 2016.
14. Bonvalet C, Bringé A. Les effets de la politique du logement sur l’évolution du taux de propriétaires en France. *Revue européenne des sciences sociales*. 2013;51(1):153–177.
15. Driant JC. Vertus et vices du développement de l’accession à la propriété. *Métropolitiques*. 2010;25 novembre 2010.
16. Schwartz HM, Seabrooke L. *The politics of housing booms and busts*. International political economy series. Basingstoke ; New York: Palgrave Macmillan; 2009.
17. Aalbers M. *The financialization of housing : a political economy approach*. London ; New York, NY: Routledge Taylor and Francis Group; 2016.
18. Aveline N. *Immobilier, la mondialisation, l’Asie, la bulle*. Paris: CNRS-Editions; 2008.
19. Simon A. Concurrence générationnelle et prix immobiliers. *Revue d’Economie Régionale et Urbaine*. 2016; p. 1–27.
20. David L, Halbert L. Chapitre 2. Logiques financières globales et fabrique de la ville.; 2010. Available from: <https://www.cairn.info/regards-sur-la-terre-2010--9782724611403-page-90.htm>.
21. Nappi-Choulet I. La financiarisation du marché immobilier français : de la crise des années 1990 à la crise des subprimes de 2008. *Revue d’économie financière*. 2013;110(2):189–206. doi:10.3917/ecofi.110.0189.
22. Lambert A. ”Tous propriétaires !”, l’envers du décor pavillonnaire. Seuil (coll. Liber); 2015.
23. Pollard J. Soutenir le marché : les nouveaux instruments de la politique du logement. *Sociologie du Travail*. 2010;52(3):323–339. doi:10.1016/j.soctra.2010.06.007.
24. Doling J, Ronald R. Home ownership and asset-based welfare. *Journal of Housing and the Built Environment*. 2010;25:165–173.

25. Schwartz H. Housing, the Welfare State, and the Global Financial Crisis: What is the Connection? *Politics and Society*. 2012;40(1):35–58. doi:10.1177/0032329211434689.
26. Rolnik R. Late Neoliberalism: The Financialization of Homeownership and Housing Rights. *International Journal of Urban and Regional Research*. 2013;37(3):1058–1066. doi:10.1111/1468-2427.12062.
27. Fernandez R, Manuel BA. Financialization and housing: Between globalization and Varieties of Capitalism. *Competition & Change*. 2016;20(2):71–88. doi:10.1177/1024529415623916.
28. Malpass P. Path Dependence and the Measurement of Change in Housing Policy. *Housing, Theory and Society*. 2011;28(4):305–319. doi:10.1080/14036096.2011.554852.
29. Ronald R. The ideology of home ownership : homeowner societies and the role of housing. Basingstoke ; New York: Palgrave Macmillan; 2008.
30. Boyer R. Is a Finance-led growth regime a viable alternative to Fordism? A preliminary analysis. *Economy and Society*. 2000;29(1):111–145. doi:10.1080/030851400360587.
31. Kemeny J. Comparative housing and welfare: Theorising the relationship. *Journal of Housing and the Built Environment*. 2001;16(1):53–70. doi:10.1023/A:1011526416064.
32. Van Gent WPC. Housing Policy as a Lever for Change? The Politics of Welfare, Assets and Tenure. *Housing Studies*. 2010;25(5):735–753. doi:10.1080/02673037.2010.483588.
33. Chastagnaret G. Banques, caisses d'épargne, immobilier et politiques publiques Une lecture historique de la crise financière espagnole : l'Espagne toujours diferente. *Revue d'économie financière*. 2013;110(2):207–244. doi:10.3917/ecofi.110.0207.
34. Kutz W, Lenhardt J. "Where to put the spare cash?" Subprime urbanization and the geographies of the financial crisis in the Global South. *Urban Geography*. 2016;37(6):926–948. doi:10.1080/02723638.2015.1118989.
35. Vorms C. Surproduction immobilière et crise du logement en Espagne. *La Vie des idées*. 2009;12 mai 2009.
36. Le Goix R. L'immobilier résidentiel suburbain en régime financiarisé de production dans la région de Los Angeles. *Revue d'Economie Régionale et Urbaine*. 2016;2016(1):101–129. doi:10.3917/reru.161.0101.
37. Teng HJ, Chang CO, Chau KW. Housing bubbles: A tale of two cities. *Habitat International*. 2013;39:8–15. doi:http://dx.doi.org/10.1016/j.habitatint.2012.10.009.
38. James D. Deeper into a Hole? *Current Anthropology*. 2014;55(S9):S17–S29.
39. Lemanski C. Moving up the Ladder or Stuck on the Bottom Rung? Homeownership as a Solution to Poverty in Urban South Africa. *International Journal of Urban and Regional Research*. 2011;35(1):57–77.

40. Tomlinson MR. The development of a low-income housing finance sector in South Africa: Have we finally found a way forward? *Habitat International*. 2007;31(1):77–86.
41. Bonneval L, Pollard J. Promoteurs immobiliers, bailleurs sociaux, collectivités locales : Des acteurs aux frontières des marchés du logement. *Métropoles*. 2017;20 — 2017(5423).
42. Casanova Enault L. Des acteurs de poids sur le littoral : les petits propriétaires immobiliers. Application au littoral provençal et azuréen. *Cybergeo : European Journal of Geography*. 2017;Aménagement, Urbanisme(823). doi:10.4000/cybergeo.28394.
43. Casanova L. Les dynamiques du foncier à bâtir comme marqueurs du devenir des territoires de Provence intérieure, littorale et préalpine. *Éléments de prospective spatiale*. Université d'Avignon; 2010.
44. Taylor PJ, Derudder B. *World city network : a global urban analysis*. Second edition. ed. Milton Park, Abingdon, Oxon: Routledge; 2015.
45. Bacqué MH, Bridge G, Benson M, Butler T, Charmes E, Fijalkow Y, et al. *The middle classes and the city : a study of Paris and London*. Basingstoke New York: Palgrave Macmillan; 2015.
46. Castells M. *La Question urbaine*. Paris: Maspéro; 1972.
47. Lefebvre H. *La production de l'espace*. Paris: Éditions Anthropos (Société et urbanisme); 1974.
48. Harvey D. *Paris, capital of modernity*. New York: Routledge; 2003.
49. Wacquant L. *Urban Outcasts: A Comparative Sociology of Advanced Marginality*. Cambridge, UK: Polity Press; 2008.
50. Houssay-Holzschuch M, Milhaud O. Geography after Babel – a view from the French province. *Geogr Helv*. 2013;68(1):51–55. doi:10.5194/gh-68-51-2013.
51. Schwabe M. La ségrégation résidentielle dans les plus grandes villes françaises (1968-1999) : quel modèle urbain ? *Cybergeo : European Journal of Geography*. 2007;(398). doi:10.4000/cybergeo.10182.
52. Prêteceille E. La ségrégation sociale a-t-elle augmenté ? La métropole parisienne entre polarisation et mixité. *Sociétés contemporaines*. 2006;62(2):93. doi:10.3917/soco.062.0069.
53. Berroir S, Mathian H, Sanders L, Saint-Julien T. Navettes et disjonction sociale dans une métropole multipolaire. In: Saint-Julien T, Le Goix R, editors. *La métropole parisienne. Centralités, inégalités, proximités*. Paris: Belin; p. 89–109. Available from: <http://halshs.archives-ouvertes.fr/halshs-00174108/en/>.
54. Francois JC, Mathian H, Ribardièrre A, Saint-Julien T. Riches et pauvres en Ile-de-France : formes et sens des voisinages. In: Saint-Julien T, Le Goix R, editors. *La métropole parisienne. Centralités, inégalités, proximités*. Paris: Belin (Mappemonde); 2007. p. 113–137.
55. Fleury A, François JC, Mathian H, Ribardièrre A, Saint-Julien T. Les inégalités socio-spatiales progressent-elles en Île-de-France ? *Métropolitiques*. 2012;.

56. Clerval A, Delage M. La métropole parisienne : une mosaïque sociale de plus en plus différenciée. *Métropolitiques*. 2014;(8 septembre 2014).
57. Préteceille E. Segregation, Social Mix and Public Policies in Paris. In: Maloutas T, Fujita K, editors. Residential segregation in comparative perspective making sense of contextual diversity. *Cities and society series*. London, New York: Routledge; 2016. p. 153–177.
58. Bacqué MH, Charmes E, Vermeersch S. The Middle Class 'at Home among the Poor' - How Social Mix is Lived in Parisian Suburbs: Between Local Attachment and Metropolitan Practices. *International Journal of Urban and Regional Research*. 2014;38(4):1211–1233. doi:10.1111/1468-2427.12130.
59. Quillian L, Lagrange H. Socioeconomic Segregation in Large Cities in France and the United States. *Demography*. 2016;53(4):1051–1084. doi:10.1007/s13524-016-0491-9.
60. Rose D, Germain A, Bacqué MH, Bridge G, Fijalkow Y, Slater T. 'Social Mix' and Neighbourhood Revitalization in a Transatlantic Perspective: Comparing Local Policy Discourses and Expectations in Paris (France), Bristol (UK) and Montréal (Canada). *International Journal of Urban and Regional Research*. 2013;37(2):430–450. doi:10.1111/j.1468-2427.2012.01127.x.
61. Donzelot J. La nouvelle question urbaine. *Esprit*. 1999;(258):87–114.
62. Donzelot J, Mongin O. De la question sociale à la question urbaine. *Esprit*. 1999;(258):83–86.
63. Mangin D. La ville franchisée, formes et structures de la ville contemporaine. Paris: Editions de la Villette; 2004.
64. Korsu E, Wenglenski S. Job Accessibility, Residential Segregation and Risk of Long-term Unemployment in the Paris Region. *Urban Studies*. 2010;47(11):2279–2324. doi:10.1177/0042098009357962.
65. Le Goix R. Some reflections on comparing (post-)suburbs in the US and France (Chapter 12). In: Harris R, Vorms C, editors. *What's in a Name? Talking about Suburbs*. Toronto: Toronto University Press; 2017. p. 320–350.
66. Jaillet MC. Peut-on parler de sécession urbaine à propos des villes européennes ? *Esprit*. 1999;11(258):145 – 167.
67. Charmes E. On the Residential 'Clubbisation' of French Periurban Municipalities. *Urban Studies*. 2009;46(1):189–212. doi:10.1177/0042098008098642.
68. Fourcaut A. Un siècle de banlieue parisienne (1859-1964). *Ville et entreprise*. Paris: L'Harmattan; 1988.
69. Bontje M, Burdack J. Post-suburbia in Continental Europe. In: Phelps NA, Wu F, editors. *International Perspectives on Suburbanization : A Post-Suburban World?* Basingstoke, Hampshire, GBR: Palgrave Macmillan; 2011. p. 143–163.
70. Kuisel R. *Seducing the French: the dilemma of Americanization*. Berkeley: University of California Press; 1993.
71. Vogel R. *Le "Nouveau Village" français. Le projet et son idéologie*. EHESS; 1979.

72. Keil R, Young D. Post-suburbia and City-region Politics. In: Phelps NA, Wu F, editors. *International Perspectives on Suburbanization : A Post-Suburban World?* Basingstoke, Hampshire: Palgrave Macmillan; 2011. p. 54–77.
73. Sieverts T. *Entre-ville : une lecture de la Zwischenstadt*. Marseille: Éditions Parenthèses; 2004.
74. Lucy WH, Phillips DL. The post-suburban era comes to Richmond: City decline, suburban transition, and exurban growth. *Landscape and urban planning*. 1997;36(4):259–275. doi:10.1016/s0169-2046(96)00358-1.
75. Wu F, Phelps NA. From Suburbia to Post-Suburbia in China? Aspects of the Transformation of the Beijing and Shanghai Global City Regions. *Built Environment*. 2008;34(4):464–481. doi:10.2148/benv.34.4.464.
76. Phelps NA, Wu F. *International Perspectives on Suburbanization : A Post-Suburban World?* Basingstoke, Hampshire, GBR: Palgrave Macmillan; 2011.
77. Bourdieu P. Le marché de la maison. In: *Les structures sociales de l'économie*. Paris: Le Seuil; 2000. p. 280 p.
78. Lévy JP. Change in the social hierarchy of French urban housing between 1978 and 1996. *International Journal of Urban and Regional Research*. 2005;29(3):581–607. doi:10.1111/j.1468-2427.2005.00606.x.
79. Guilluy C. *La France Péripherique. Comment on a sacrifié les classes populaires*. Paris: Flammarion; 2014.
80. Davezies L, Guilluy C. La France périphérique et marginalisée: les raisons du ressentiment. *Esprit*. 2013;(393):23–33.
81. Rivière J. Trajectoires résidentielles et choix électoraux chez les couches moyennes périurbaines. *Espaces et sociétés*. 2012;2012/1(148-149):73–90. doi:10.3917/esp.148.0073.
82. Brun J, Rhein C. *La ségrégation dans la ville. Concepts et mesures*. Paris: L'Harmattan; 1994.
83. Berger M. *Les périurbains de Paris*. Paris: CNRS Editions; 2004.
84. Sassen S. *The Global City : New York, London, Tokyo*. Princeton, NJ: Princeton University Press [Ed. française: *La ville globale : New York, Londres, Tokyo*. Paris : Descartes, 1996, 530 p.]; 1991.
85. Hamnett C. Spatially Displaced Demand and the Changing Geography of House Prices in London, 1995–2006. *Housing Studies*. 2009;24(3):301–320. doi:10.1080/02673030902814580.
86. Piketty T. *Le capital au XXIe siècle*. Paris: Seuil; 2013.
87. Desjardins X. La bataille du Grand Paris. *L'Information géographique*. 2010;74(4):29–46. doi:10.3917/lig.744.0029.
88. Lacoste G. La Métropole du Grand Paris, intégration ou confédération ? *Métropolitiques*. 2013;(9 septembre 2013).
89. Gilli F. Le Grand Paris, une métropole en marche ? *Métropolitiques*. 2013;(30 janvier 2013).

90. Jaillet MC. L'espace périurbain: un univers pour les classes moyennes. *Esprit*. 2004;303(3-4):40–62.
91. Berger M, Aragau C, Rougé L. Vers une maturité des territoires périurbains ? *EchoGéo* [Online]. 2014;(27 — 2014). doi:10.4000/echogeo.13683.
92. Lambert A. Accession à la propriété et trajectoires migratoires : les conditions d'un vote à gauche en lotissement périurbain. *Métropolitiques*. 2012;(16 mai 2012).
93. Lambert A. Périurbain, from woes to words. Political and social uses of a new administrative category . In: Harris R, Vorms C, editors. *What's in a Name? Talking about Suburbs*. Toronto: Toronto University Press; 2017. p. 364–383.
94. Lang R. *Edgeless cities : exploring the elusive metropolis*. Brookings metro series. Washington, D.C.: Brookings Institution Press; 2003.
95. Motte-Baumvol B, Massot MH, Byrd AM. Escaping Car Dependence in the Outer Suburbs of Paris. *Urban Studies*. 2010;47(3):604–619.
96. Chalonge L, Beaucire F. Le desserrement des emplois au sein des aires urbaines. Dépendance, autonomie, ou intégration ? *Annales de la Recherche Urbaine*. 2007;102(1):97–101.
97. Drevelle M. Structure des navettes domicile-travail et polarités secondaires autour de Montpellier. *Mappemonde*. 2012;107(2012-3).
98. I. Les conditions de logement en France. INSEE; 2017. Available from: <https://www.insee.fr/fr/statistiques/fichier/2586377/LOGFRA17.pdf>.
99. Callen D. La "fabrique péri-urbaine", système d'acteurs et production des ensembles pavillonnaires dans la Grande Couronne francilienne. Université Panthéon-Sorbonne - Paris 1; 2011. Available from: <http://tel.archives-ouvertes.fr/tel-00651441>.
100. McLennan D, Tu Y. Economic perspectives on the structure of local housing markets. *Housing Studies*. 1996;11:387–406.
101. Rosen S. Hedonic Prices and Implicit Markets: Product Differentiation in Pure Competitions. *Journal of Political Economy*. 1974;72:34–55.
102. Sack R. *Human territoriality: its theory and history*. Cambridge: Cambridge University Press; 1986.
103. Cliff AD, Ord JK. *Spatial Processes : Models and Applications*. Pion; 1981.
104. Bowen WM, Mikelbank BA, Prestegaard DM. Theoretical and Empirical Considerations Regarding Space in Hedonic Housing Price Model Applications. *Growth and Change*. 2001;32(4):466–490. doi:10.1111/0017-4815.00171.
105. Chasco C, Le Gallo J. Hierarchy and spatial autocorrelation effects in hedonic models. *Economics Bulletin*. 2012;32(2):1474–1480.
106. Orford S. Valuing Locational Externalities: a GIS and Multilevel Modelling Approach. *Environment and Planning B: Planning and Design*. 2002;29(1):105–127.

107. Fik TJ, Ling DC, Mulligan GF. Modeling Spatial Variation in Housing Prices: A Variable Interaction Approach. *Real Estate Economics*. 2003;31(4):623–646. doi:10.1046/j.1080-8620.2003.00079.x.
108. Fritsch B. Tramway et prix des logements à Nantes. *L'Espace Géographique*. 2007;36(2007/2):97–113.
109. Beckerich C. Biens publics et valorisation immobilière. Université Lumière Lyon 2; 2000. Available from: http://demeter.univ-lyon2.fr/sdx/theses/lyon2/2000/beckerich_c.
110. Faburel G, Maleyre I. Le bruit des avions comme facteur de dépréciations immobilières, de polarisation sociale et d'inégalités environnementales. Le cas d'Orly. *Développement durable et territoire*. 2007;Dossier 9 : Inégalités écologiques, inégalités sociales(9).
111. Guérois M, Le Goix R. La dynamique spatio-temporelle des prix immobiliers à différentes échelles : le cas des appartements anciens à Paris (1990-2003). *Cybergeo : European Journal of Geography*. 2009;470:25 p. doi:10.4000/cybergeo.22644.
112. Smith N. Gentrification and the Rent gap. *Annals of the Association of American geographers*. 1979;77(3):462–465.
113. Cooper C, Orford S, Webster C, Jones CB. Exploring the ripple effect and spatial volatility in house prices in England and Wales: regressing interaction domain cross-correlations against reactive statistics. *Environment and Planning B: Planning and Design*. 2013;40(5):763–782.
114. Goodman AC, T G T. Where are the speculative bubbles in US housing markets? *Journal of Housing Economics*. 2008;17(2):117–137. doi:10.1016/j.jhe.2007.12.001.
115. Geniaux G, Napoléone C, Leroux B. Les effets prix de l'offre foncière. *Revue d'Économie Régionale et Urbaine*. 2015;mai(1-2):273–320. doi:10.3917/reru.151.0273.
116. Scott AJ. *The urban land nexus and the State*. London: Pion; 1980.
117. Christophers B. For real: land as capital and commodity. *Transactions of the Institute of British Geographers*. 2016;41(2):134–148. doi:10.1111/tran.12111.
118. Topalov C. *Le Profit, la Rente et la Ville*. Paris: Economica; 1984.
119. Halbert L. Les acteurs des marchés financiers font-ils la ville ? Vers un agenda de recherche. *EspacesTempsnet*. 2013;(9 juillet 2013).
120. Xiao Y, Webster C, Orford S. Can street segments indexed for accessibility form the basis for housing submarket delineation? *Housing Studies*. 2016; p. 1–23. doi:10.1080/02673037.2016.1150433.
121. Le Goix R, Huet A. The interactions between suburban street patterns, property values and socio-occupational trajectories in the western suburbs of Paris. In: *American Association of Geographers Annual Meeting - AAGs 2013*; 2013.
122. Le Goix R. *Sur le front de la métropole. Une géographie suburbaine de Los Angeles*. Paris: Publications de la Sorbonne; 2016.

123. Webster CJ. Property Rights and the Public Realm: Gates, Green Belts, and Gemeinschaft. *Environment and Planning B: Planning and Design*. 2002;29(3):397–412. doi:10.1068/b2755r.
124. Charmes E. Cul-de-sacs, Superblocks and Environmental Areas as Supports of Residential Territorialization. *Journal of Urban Design*. 2010;15(3):357–374. doi:10.1080/13574809.2010.487811.
125. Le Goix R, Vesselinov E. Gated Communities and House Prices: Suburban Change in Southern California, 1980–2008. *International Journal of Urban and Regional Research*. 2013;37(6):2129–2151. doi:10.1111/j.1468-2427.2012.01139.x.
126. Webster CJ. The nature of the neighbourhood. *Urban Studies*. 2003;40(13):2591–2612. doi:10.1080/0042098032000146803.
127. Grasland C, Mathian H, Vincent JM. Multiscalar Analysis and map generalisation of discrete social phenomena: Statistical problems and political consequences. *Statistical Journal of the United Nations ECE*. 2000;(17):1–32.
128. Stewart JQ. A Measure of the Influence of a Population at a Distance. *Sociometry*. 1942;5(1):63–71. doi:10.2307/2784954.
129. Grasland C. Spatial analysis of social facts. A tentative theoretical framework derived from tobler’s first law of geography and blau’s multilevel structural theory of society. In: Bavaud F, Mager C, editors. *Handbook of Quantitative Geography*. University of Lausanne; 2009. p. 46 p. Available from: <http://halshs.archives-ouvertes.fr/halshs-00410669/> [cited 28 may 2012].
130. Commenges H, Giraud T. Introduction to the SpatialPosition package; 2016. Available from: <https://cran.r-project.org/web/packages/SpatialPosition/vignettes/SpatialPosition.html>.
131. Tobler W, Wineburg S. A Cappadocian Speculation. *Nature*. 1971;231(5297):39–41. doi:10.1038/231039a0.
132. Stouffer SA. Intervening opportunities : a theory relating mobility and distance. *American Sociological Review*. 1940;5(6):845–867.
133. Tobler WR. A computer Movie Simulating Urban Growth in the Detroit Region. *Economic Geography*. 1970;46(Supplement: Proceedings. IGU Commission on Quantitative Geography):234–240.
134. Stewart JQ, Warntz W. Physics of population distribution. *Journal of Regional Science*. 1968;1:99–123.
135. Plumejeaud C, Vincent JM, Grasland C, Bimonte S, Mathian H, Guelton S, et al. HyperSmooth: A System for Interactive Spatial Analysis Via Potential Maps. In: Bertolotto M, Ray C, Li X, editors. *Web and Wireless Geographical Information Systems: 8th International Symposium, W2GIS 2008, Shanghai, China, December 11-12, 2008*. Proceedings. Berlin, Heidelberg: Springer Berlin Heidelberg; 2008. p. 4–16. Available from: http://dx.doi.org/10.1007/978-3-540-89903-7_2.
136. Commenges H, Giraud T, Boulier J. SpatialPosition; 2015. Available from: <https://cran.r-project.org/web/packages/SpatialPosition/index.html>.

137. Commenges H, Giraud T, Lambert N. ESPON FIT: Functional Indicators for Spatial-Aware Policy-Making. *Cartographica: The International Journal for Geographic Information and Geovisualization*. 2016;51(3):127–136.
138. Müllner D. fastcluster: Fast Hierarchical, Agglomerative Clustering Routines for R and Python. *Journal of Statistical Software*. 2013;53(9):18.
139. Mikelbank B. Neighborhood Déjà Vu: Classification in Metropolitan Cleveland, 1970-2000. *Urban Geography*. 2011;32(3):317–333. doi:10.2747/0272-3638.32.3.317.
140. Delmelle EC. Five decades of neighborhood classifications and their transitions: A comparison of four US cities, 1970–2010. *Applied Geography*. 2015;57(February 2015):1–11. doi:http://dx.doi.org/10.1016/j.apgeog.2014.12.002.
141. Gabadinho A, Ritschard G, Müller NS, Studer M. Analyzing and visualizing state sequences in R with TraMineR. *Journal of Statistical Software*. 2011;40(4):1–37.
142. Rouge L. L’accession à la propriété d’un pavillon périurbain entre appropriation et enfermement. In: *Actes de la Journée d’étude Jeunes chercheurs du 20 mai 2005. Le logement et l’habitat comme objets de recherche*. Paris: GIS Socio-économie de l’habitat; 2005. p. 10 p.
143. Duncan OD, Duncan B. A Methodological Analysis of Segregation Indexes. *American Sociological Review*. 1955;(41):210–217.
144. French S, Leyshon A, Wainwright T. Financializing space, spacing financialization. *Progress in Human Geography*. 2011;35(6):798–819. doi:10.1177/0309132510396749.
145. Brenner N, Theodore N. Cities and the Geographies of “Actually Existing Neoliberalism”. *Antipode*. 2002;34(3):349–379. doi:10.1111/1467-8330.00246.
146. Peck J. Economic geography: Island life. *Dialogues in Human Geography*. 2012;2(2):113–133. doi:10.1177/2043820612443779.