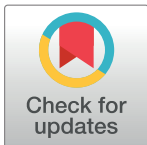


CORRECTION

Correction: Genetic diversity, genetic structure and diet of ancient and contemporary red deer (*Cervus elaphus* L.) from north-eastern France

Annik Schnitzler, José Granado, Olivier Putelat, Rose-Marie Arbogast, Dorothee Drucker, Anna Eberhard, Anja Schmutz, Yuri Klaefiger, Gérard Lang, Walter Salzburger, Joerg Schibler, Angela Schlumbaum, Hervé Bocherens

Fig 2 is incorrect. Please see the corrected Fig 2 here.



OPEN ACCESS

Citation: Schnitzler A, Granado J, Putelat O, Arbogast R-M, Drucker D, Eberhard A, et al. (2018) Correction: Genetic diversity, genetic structure and diet of ancient and contemporary red deer (*Cervus elaphus* L.) from north-eastern France. PLoS ONE 13(6): e0199945. <https://doi.org/10.1371/journal.pone.0199945>

Published: June 25, 2018

Copyright: © 2018 Schnitzler et al. This is an open access article distributed under the terms of the [Creative Commons Attribution License](https://creativecommons.org/licenses/by/4.0/), which permits unrestricted use, distribution, and reproduction in any medium, provided the original author and source are credited.

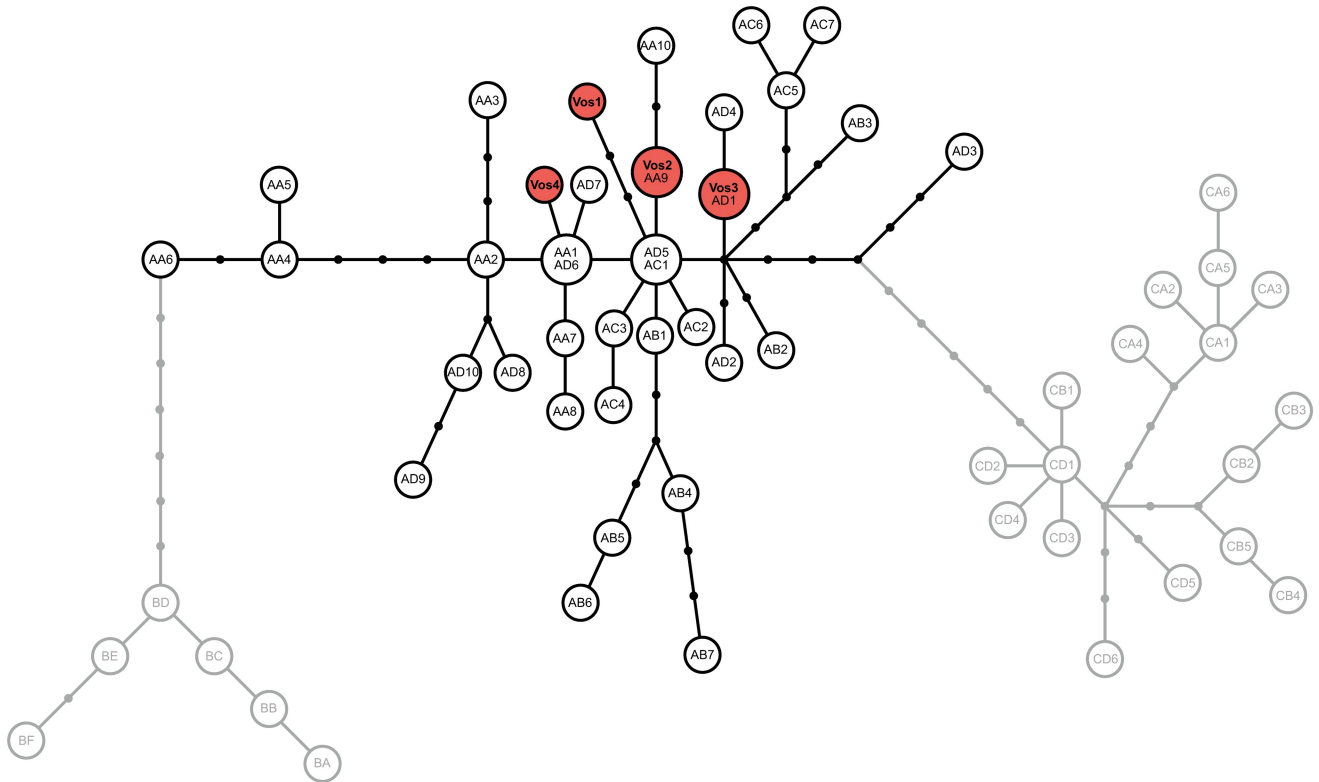


Fig 2. Haplotype genealogy based on maximum likelihood. Mitochondrial haplotype genealogy based on the mitochondrial control region and a maximum likelihood phylogenetic analysis. The haplotypes detected in red deer from the Vosges are indicated in red, all other haplotypes were taken from [3]. Haplotypes belonging to haplotype lineage A are indicated in black, those of haplotype lineages B, C are depicted in grey. Note that some of the haplotypes initially identified by Skog et al. 2009 have collapsed into a single haplotype in our analyses, which is due to the use of a shorter sequences alignment in our analysis to match the length of the newly obtained sequences.

<https://doi.org/10.1371/journal.pone.0199945.g001>

Reference

1. Schnitzler A, Granado J, Putelat O, Arbogast R-M, Drucker D, Eberhard A, et al. (2018) Genetic diversity, genetic structure and diet of ancient and contemporary red deer (*Cervus elaphus* L.) from north-eastern France. PLoS ONE 13(1): e0189278. <https://doi.org/10.1371/journal.pone.0189278> PMID: 29304165