



**HAL**  
open science

## **Embodied Foodways: fine-scale isotopic reconstruction of Sai Island Meroitic diets**

Marcos C Martinez, Alexandra M Greenwald, Jelmer W Eerkens, Alex de  
Voogt, Francigny Vincent

► **To cite this version:**

Marcos C Martinez, Alexandra M Greenwald, Jelmer W Eerkens, Alex de Voogt, Francigny Vincent.  
Embodied Foodways: fine-scale isotopic reconstruction of Sai Island Meroitic diets. The Western  
Bioarchaeology Group, 2017, Reno, United States. 10.13140/RG.2.2.11569.22884 . halshs-02539304

**HAL Id: halshs-02539304**

**<https://shs.hal.science/halshs-02539304v1>**

Submitted on 10 Apr 2020

**HAL** is a multi-disciplinary open access archive for the deposit and dissemination of scientific research documents, whether they are published or not. The documents may come from teaching and research institutions in France or abroad, or from public or private research centers.


L'archive ouverte pluridisciplinaire **HAL**, est destinée au dépôt et à la diffusion de documents scientifiques de niveau recherche, publiés ou non, émanant des établissements d'enseignement et de recherche français ou étrangers, des laboratoires publics ou privés.

## Embodied Foodways: fine-scale isotopic reconstruction of Sai Island Meroitic diets


Poster · January 2019  
DOI: 10.1016/j.1524-0704(2019)00000-0


CITATIONS  
0

5 authors, including:


 Marcos C. Martinez  
Arizona State University  
2 PUBLICATIONS 2 CITATIONS  
[SEE PROFILE](#)

Some of the authors of this publication are also working on these related projects:

 A Case Study in the Developmental Origins of Health and Disease of Two Ancient Andean Agriculturalists [View project](#)

 Evolution of ruminant Plant Use [View project](#)

READS  
9

 Alexandra Greenfield  
Arizona State University  
12 PUBLICATIONS 32 CITATIONS  
[SEE PROFILE](#)



# Embodied Foodways: fine-scale isotopic reconstruction of Sai Island Meroitic diets

Marcos C. Martinez, Alexandra M. Greenwald, Jelmer W. Eerkens, Alex de Voogt, and Vincent Francigny



## INTRODUCTION

Sai Island is between the second and third cataracts of the Nile, in what is now northern Sudan. While we focus on the Meroitic-period of occupation from the 1<sup>st</sup>-4<sup>th</sup> century AD, the site is multi-component, with occupations from Nubian prehistory to the modern era. Excavation and analysis of Cemetery 8-B-5.A interments suggests that individuals buried there were the Meroitic elite. Wooden funerary beds, bioarchaeological analyses, and luxury grave goods, e.g. glass vessels and ivory decorations, are evidence of the status of the individuals interred there.

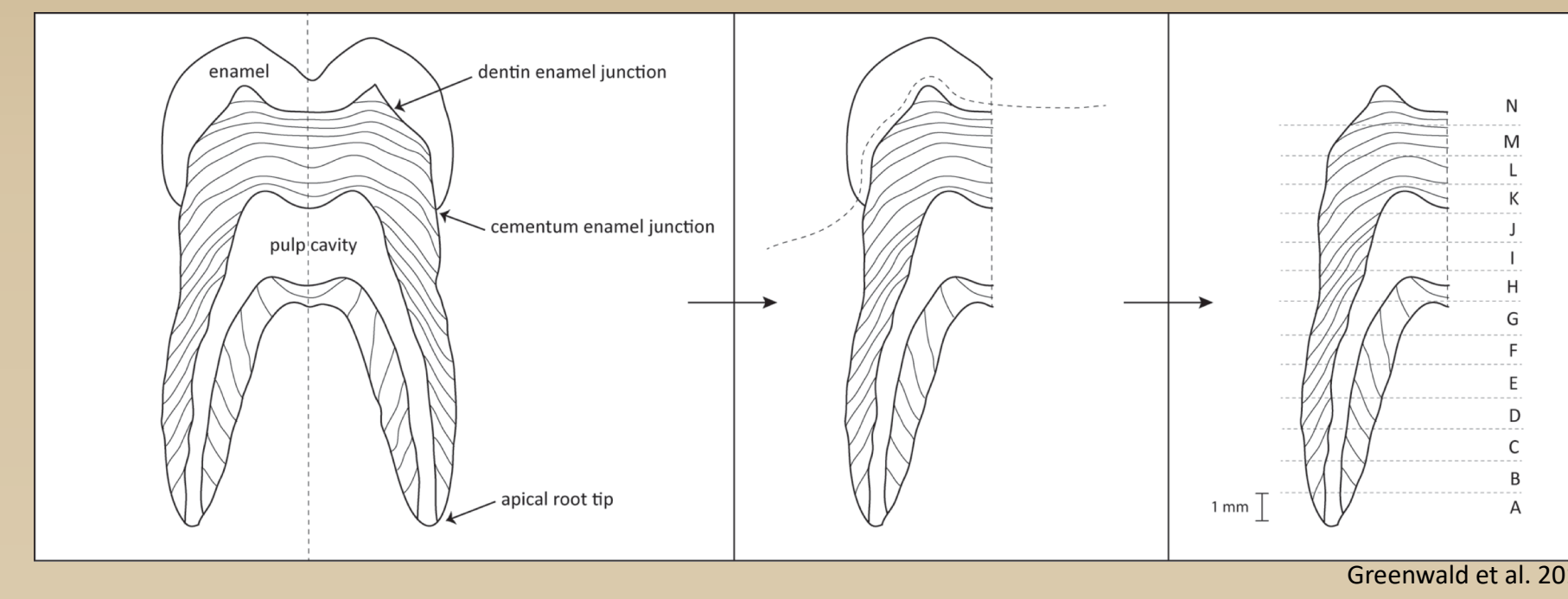
THE GOAL OF THE CURRENT STUDY IS TO UNDERSTAND THE DIET, ON A FINE TIMESCALE, OF THE ELITE MEROITIC RESIDENTS OF SAI ISLAND and any inter- and intra-personal variation.



Figure 2 Meroitic Acropolis, Sai Island Sai Island Archaeological Mission

## METHODS

We reconstruct diet for 9 individuals interred in Cemetery 8 B 5.A using  $\delta^{15}\text{N}$  and  $\delta^{13}\text{C}$  measures derived from third molar serial micro-samples of dentinal collagen. Internally aging each sample within a tooth using age-related landmarks and growth rates permits the estimation of diet on a roughly annual basis for each individual from approximately age 9 to 21 years.



Greenwald et al. 2016

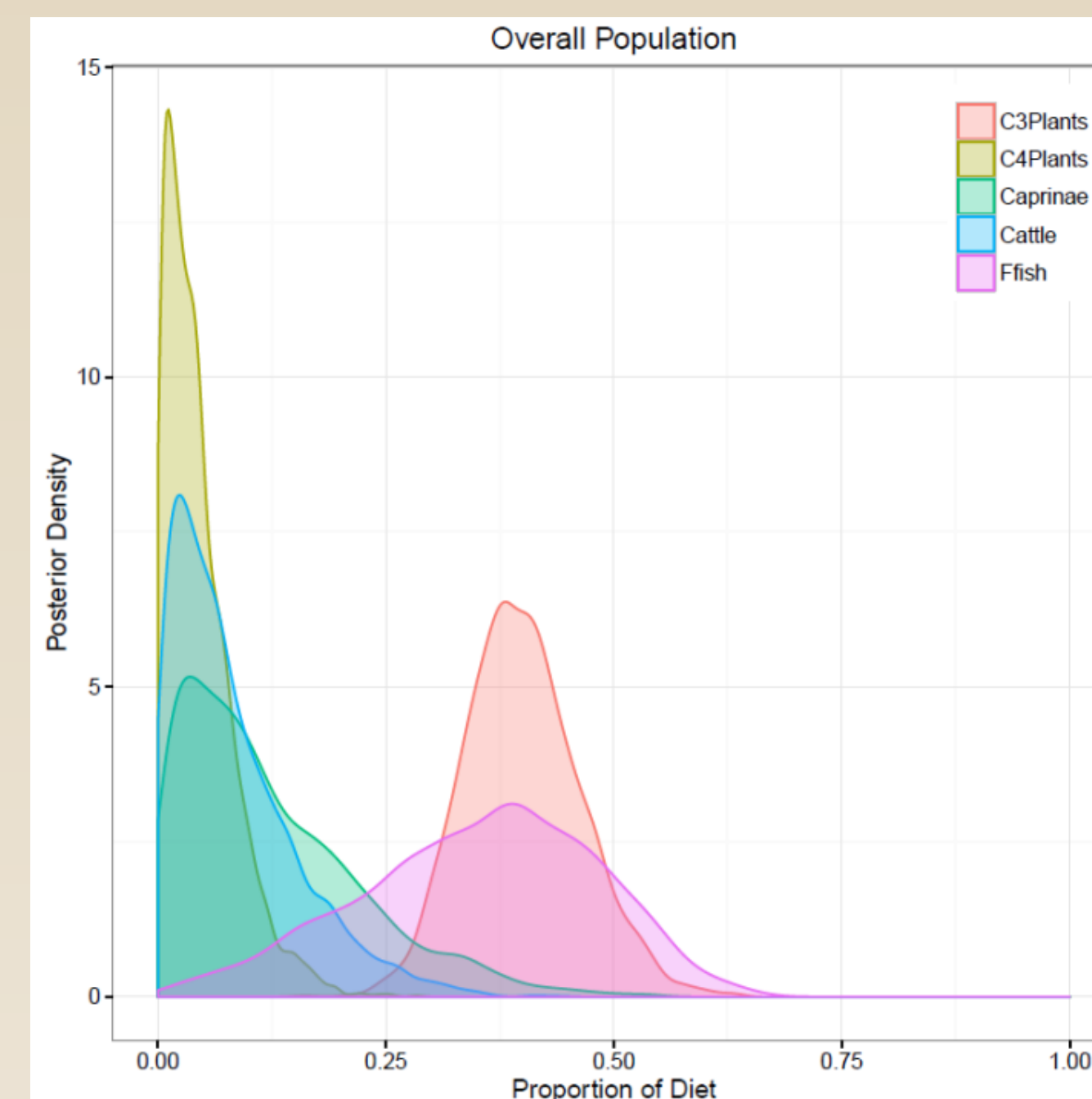
## RESULTS

### Mixing Model

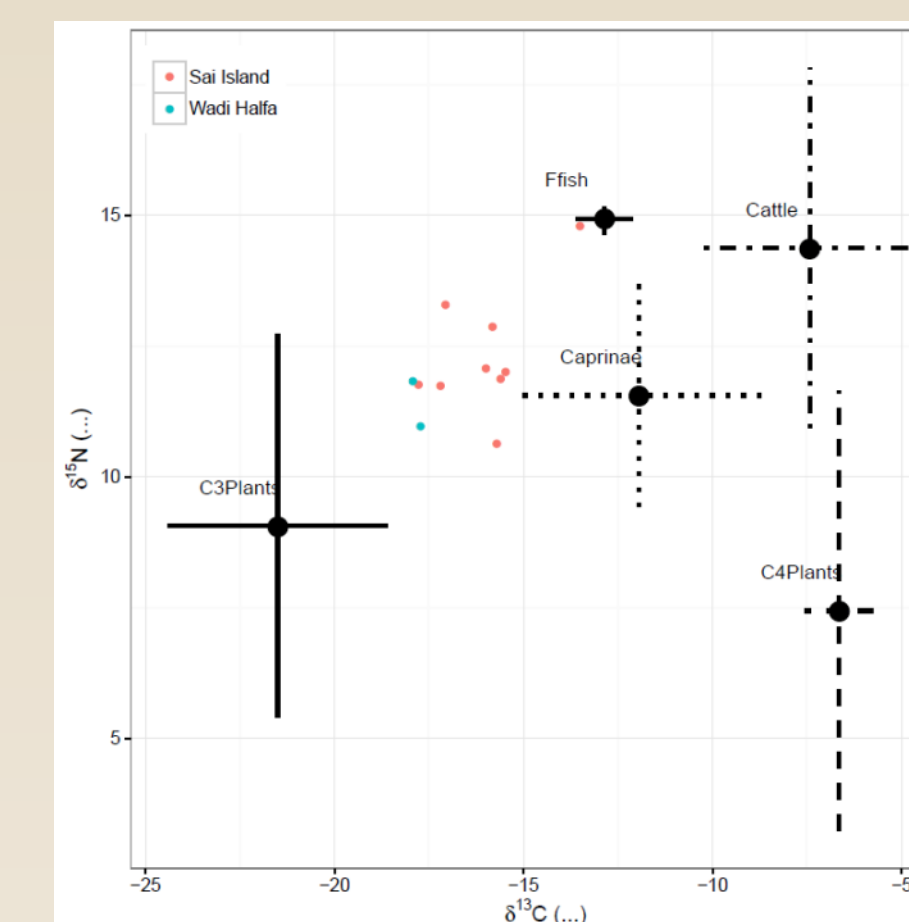
Dentinal collagen isotopic measures for 9 individuals from Cemetery 8-B-5.A were entered into a mixing model that included the resources plotted in the food web that are known to have been used by the Meroitic population (Rowley and Conway 1989, White and Schwarzcz 1994, and Iacumin 1998).

MixSIAR is a hierarchical Bayesian model for estimating isotopic mixing which creates likelihood distributions for the inclusion of each resource. This approach to estimating the diet of the population treats individuals as random samples from the underlying population, and can incorporate specific parameters and estimates of uncertainty, with the goal being to accurately reproduce the mean and deviation present in a population exploiting multiple resources.

The model indicates that C<sub>3</sub> plants were of primary importance, followed by freshwater fish, and cattle, with caprinae included in smaller quantities.



Dietary Resource	Percent Diet	SD
C <sub>3</sub> plants	40%	± 7
Freshwater Fish	35%	± 13
Caprinae	12.5%	± 10
Cattle	8%	± 7
C <sub>4</sub> plants	4%	± 4



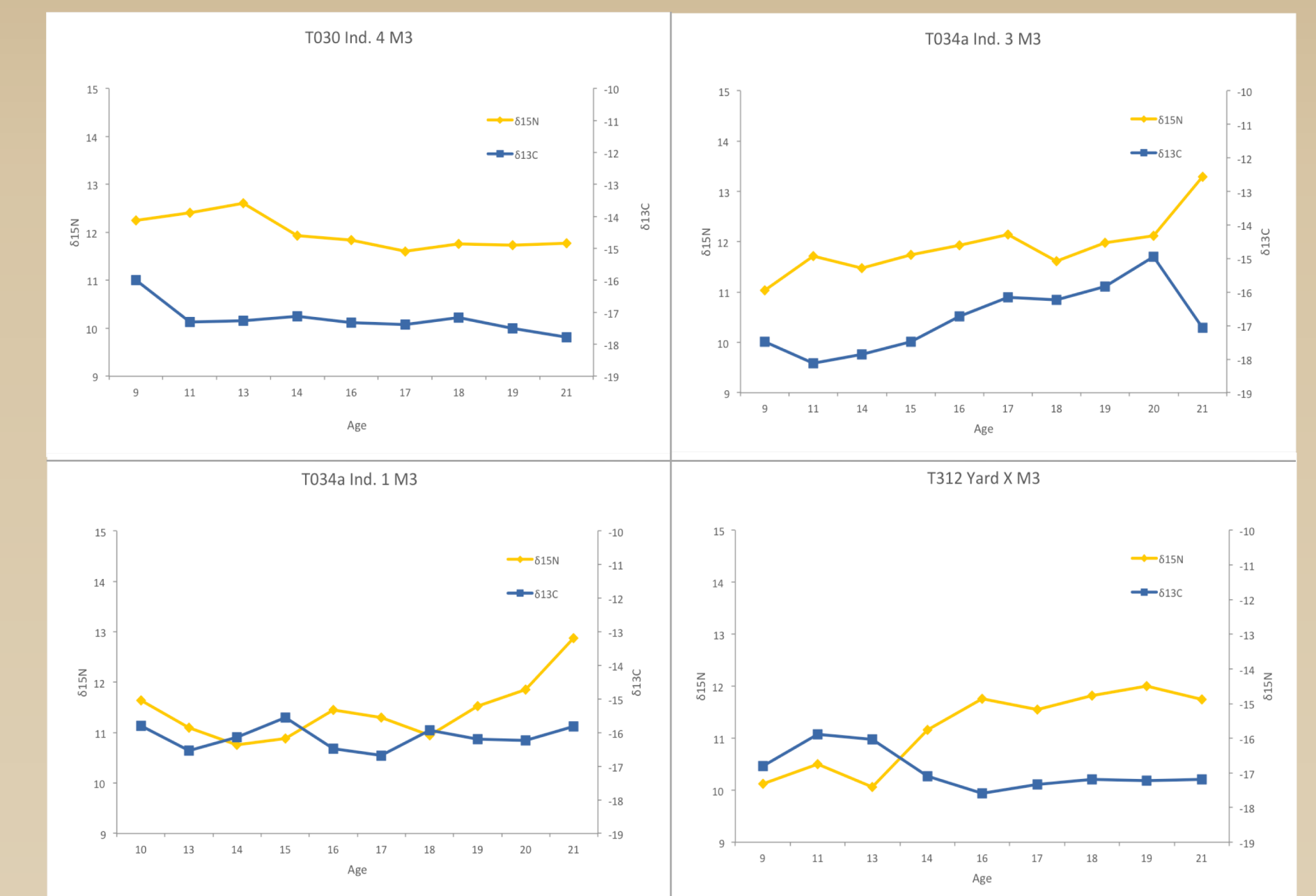
## RESULTS

### Serial Samples

Moderate variation in resource consumption within individuals  
Fluctuations in relative inclusion of C<sub>3</sub> plants and animal protein (fish and Caprinae).

Low inter-individual variation in resource use.

Variation across time in resource availability but not between individuals.



## DISCUSSION & CONCLUSIONS

Our preliminary results are intriguing, as the bulk of previous archaeological work posits a Nubian/Meroitic reliance on C<sub>4</sub> cultigens. Cross cultural ethnographic data suggest that millet is often considered a low status crop, only eaten by domestic herbivores and members of lower social status when wheat, a C<sub>3</sub> plant, is readily available. The Meroitic population sampled for this study was likely high status, and their consumption of C<sub>3</sub> plants may not be representative of all Meroitic peoples.

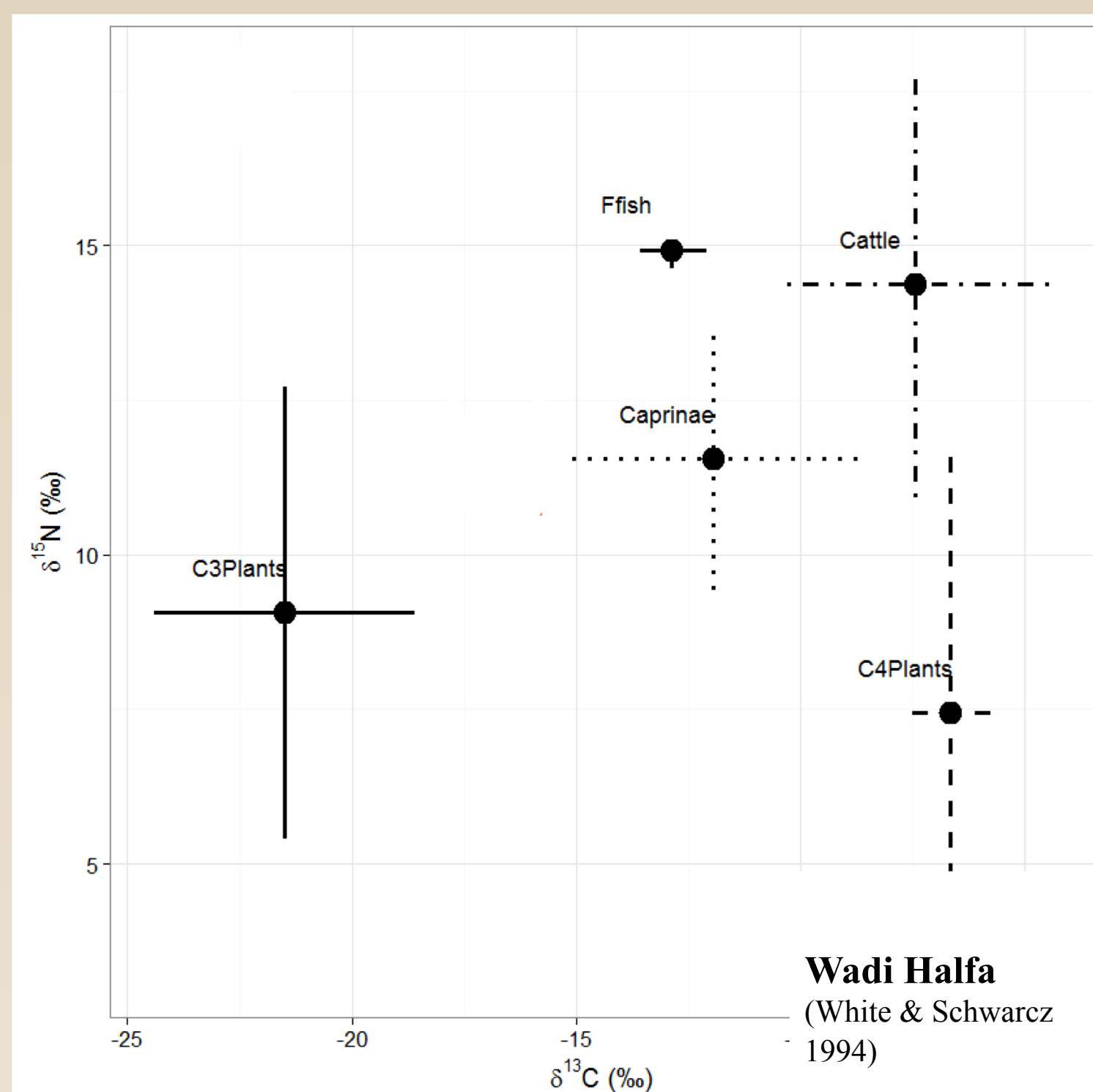
Variation in resources availability observed in serial samples might be due to harvest periods. C<sub>3</sub> vegetables and fresh water fish could be harvested throughout the year, while wheat and barley are a fall/winter staple, and C<sub>4</sub> crops, predominately sorghum and millet, are grown in the spring and summer. Seasonal variation in fish availability due to flooding may also be a possibility. The periodic culling of young males in herds could also play a part, with sporadic increases of caprinae and bovid protein.

## ACKNOWLEDGEMENTS

Thanks to everyone at the UC Davis Archaeometry lab  
We'd like to thank Gregory Burns for his support on the MixSIAR modeling, and Joy Mathews of the UC Davis Stable Isotope Facility  
Funding for analysis was provided by the UC Davis Provost Undergraduate Fellowship (PUF)

## BACKGROUND

Previous isotopic work in the region suggests that the Meroitic diet was dominated by C<sub>3</sub> plants, as well as terrestrial herbivores – presumed to be domesticated cattle and caprinae (sheep and goats) (White and Schwarzcz 1994).



	# of Samples	δ <sup>13</sup> C	δ <sup>15</sup> N
<b>Wadi Halfa</b> (White & Schwarzcz 1994)	31	-18.1	12.4
<b>Kerma</b> (Iacumin 1998)	1	-20.4	21.8
<b>El Hobagi</b> (Iacumin 1998)	2	-7.8	23.4
<b>Al Khiday</b> (Iacumin 2016)	26	-19.0	N/A