



**HAL**  
open science

# EXCAVATIONS AT NAUSHARO (1985-1996) AND OTHER SITES

Aurore Didier, David Sarmiento Castillo

► **To cite this version:**

Aurore Didier, David Sarmiento Castillo. EXCAVATIONS AT NAUSHARO (1985-1996) AND OTHER SITES: MAI Mission, direction: Jean-François Jarrige Cooperation: Department of Archaeology and Museums of Pakistan. International Seminar on "French Contributions to Pakistan Studies", Feb 2014, Islamabad; Karachi; Banbhore, Pakistan. , 2014. halshs-02986859

**HAL Id: halshs-02986859**

**<https://shs.hal.science/halshs-02986859>**

Submitted on 3 Nov 2020

**HAL** is a multi-disciplinary open access archive for the deposit and dissemination of scientific research documents, whether they are published or not. The documents may come from teaching and research institutions in France or abroad, or from public or private research centers.

L'archive ouverte pluridisciplinaire **HAL**, est destinée au dépôt et à la diffusion de documents scientifiques de niveau recherche, publiés ou non, émanant des établissements d'enseignement et de recherche français ou étrangers, des laboratoires publics ou privés.



MAI Mission, direction: Jean-François Jarrige

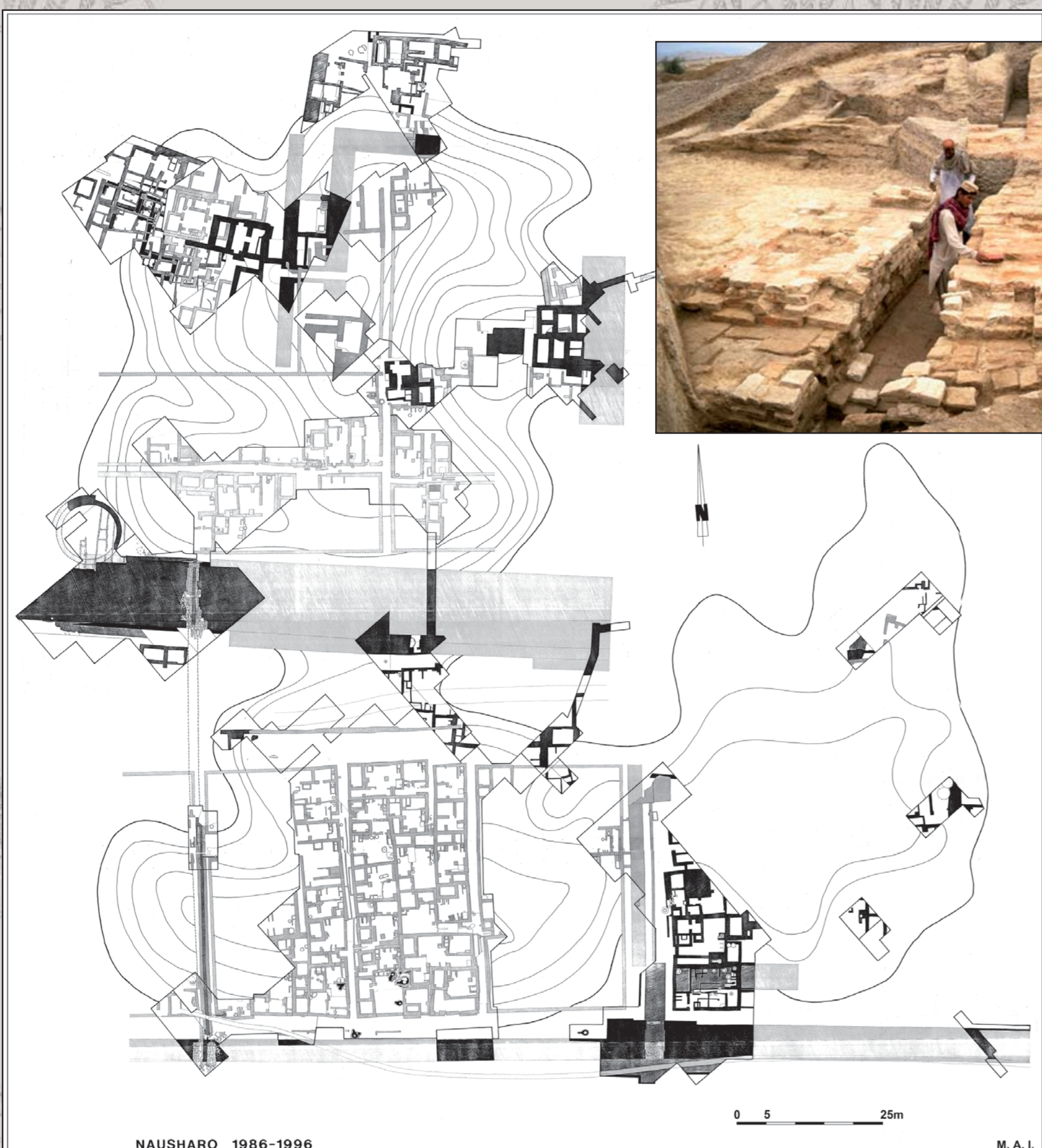
Cooperation: Department of Archaeology and Museums of Pakistan

## NAUSHARO, FROM THE LATE CHALCOLITHIC/EARLY BRONZE AGE (3100-2500 BC)...

The site of Nausharo is located 6 km south of Mehrgarh in the Kachi-Bolan region (Balochistan). Remains of the Late Chalcolithic/Early Bronze Age period (Nausharo period I) similar to those of Mehrgarh VI-VII (3100-2600) were found in the northern part of the mound. They included well-preserved mudbrick houses and structures associated with a rich material assemblage. In period IB-IC (2900-2600 BC) rooms, dozens of complete ceramic pots, stylistically very diversified, were discovered along with seals, human figurines, potter's tools and ceramic wastes. The final stage of period I (period ID) at Nausharo, dated between 2600 and 2500 BC, brought to light significant evidences for understanding the setting of the Indus Civilization.



Mudbrick architecture of period IC



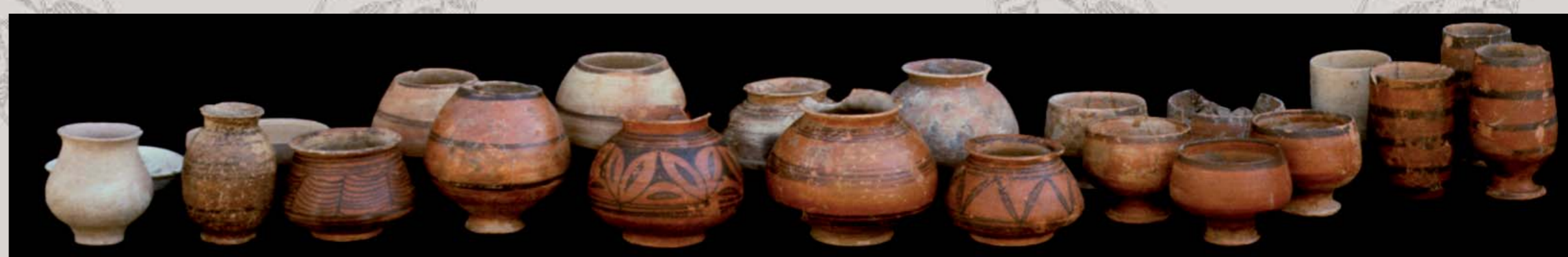
Nausharo: Plan of the site and superimposed drains of periods II-III (2500-2100 BC).



Period ID pottery



Human figurines from period IB (2900-2700BC) and ID (2600-2500 BC)



Period ID pottery

## ... TO THE INDUS CIVILIZATION (2500-1900 BC)

The excavated remains from Nausharo periods II and III (2nd half of the 3rd millennium BC) show the features of a classical Indus Civilization site with a planned architecture associated with drains and sanitary installations. The pottery has evidenced a stylistic and technological evolution similar to those of other Indus sites in the Greater Indus Valley. Besides pottery, all the other artefacts (seals, figurines and other objects) are typical of the Indus civilization. In period IV (2100-1900 BC), the material assemblage of Nausharo also includes some features characteristic of the Oxus Civilization which has developed in Central Asia (Margiana, Bactria) between 2200 et 1800 BC. Artefacts characteristic of the Oxus civilization were also discovered, mainly in graves, at Mehrgarh VIII, Sibri, Dauda Damb and at Quetta.



Period II pottery.



Terracotta figurines, steatite stamp seals, necklace with terracotta beads and miniature cart from period III (2300-2100 BC).



## OTHER EXCAVATIONS BY THE MAI IN THE KACHI-BOLAN REGION



Lal Shah: double-chamber potter's kiln from period Nausharo IC (2700-2600 BC).



Funerary pottery from Dauda Damb, seal and metal weapon from Sibri (2100-1900 BC).

