



HAL
open science

Nonlinear effects of speech rate on articulatory timing in singletons and geminates

Sam Tilsen, Anne Hermes

► **To cite this version:**

Sam Tilsen, Anne Hermes. Nonlinear effects of speech rate on articulatory timing in singletons and geminates. 12th International Seminar on Speech Production, Dec 2020, virtual, United States. halshs-03083574

HAL Id: halshs-03083574

<https://shs.hal.science/halshs-03083574>

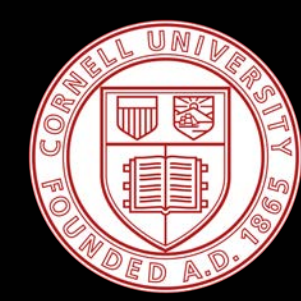
Submitted on 19 Dec 2020

HAL is a multi-disciplinary open access archive for the deposit and dissemination of scientific research documents, whether they are published or not. The documents may come from teaching and research institutions in France or abroad, or from public or private research centers.

L'archive ouverte pluridisciplinaire **HAL**, est destinée au dépôt et à la diffusion de documents scientifiques de niveau recherche, publiés ou non, émanant des établissements d'enseignement et de recherche français ou étrangers, des laboratoires publics ou privés.

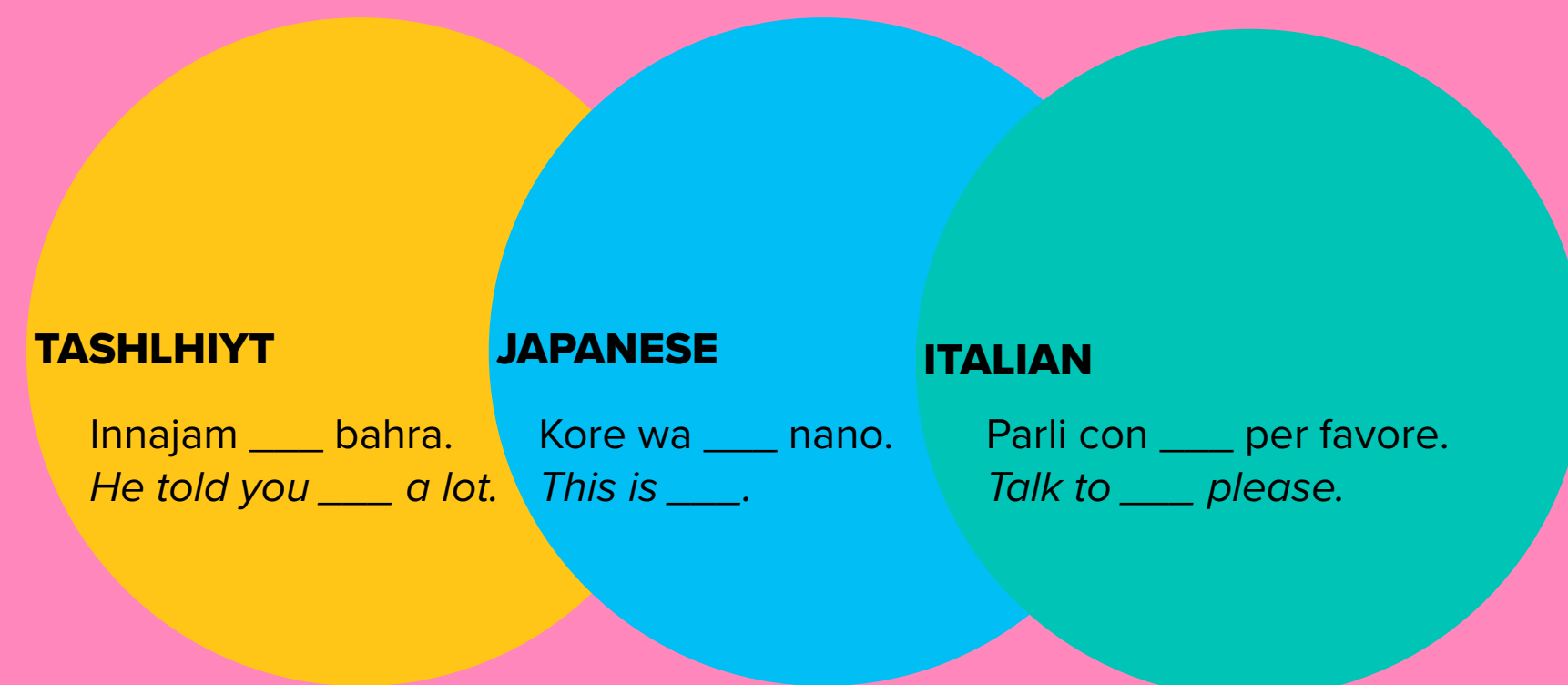
NONLINEAR EFFECTS OF SPEECH RATE ON ARTICULATORY TIMING IN SINGLETONS AND GEMINATES

SAM TILSEN & ANNE HERMES

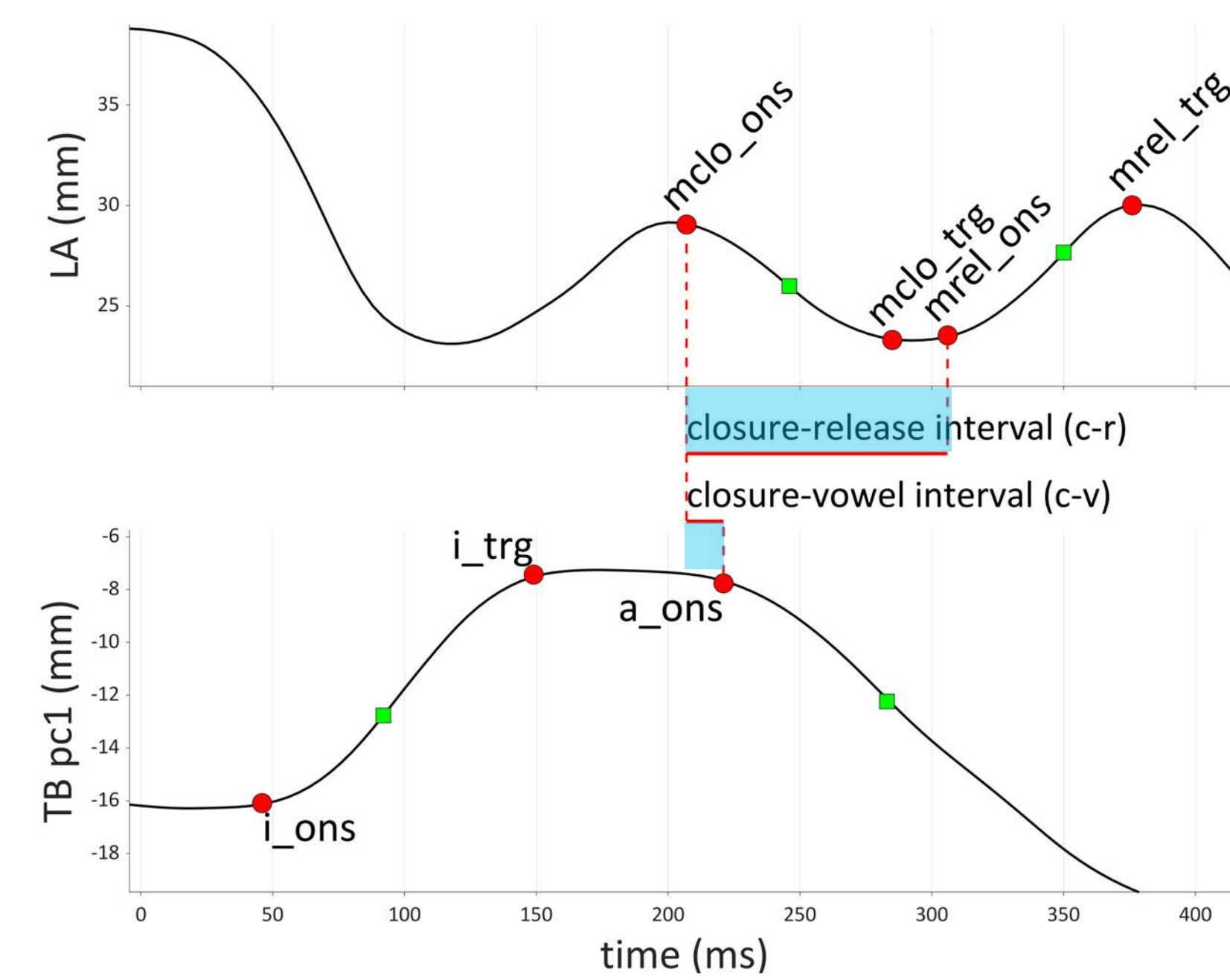


HOW DOES ARTICULATORY TIMING IN SINGLETONS AND GEMINATES VARY AS A FUNCTION OF SPEECH RATE?

/ima/ vs. /imma/



ARTICULATORY MEASURES



exponential and linear model fits for variables across target word duration (x-axis)

METHOD

EMA recordings

Speech rate manipulation



eliciting continuous variation in rate, by visual analog cue (20-step continuum of rates)

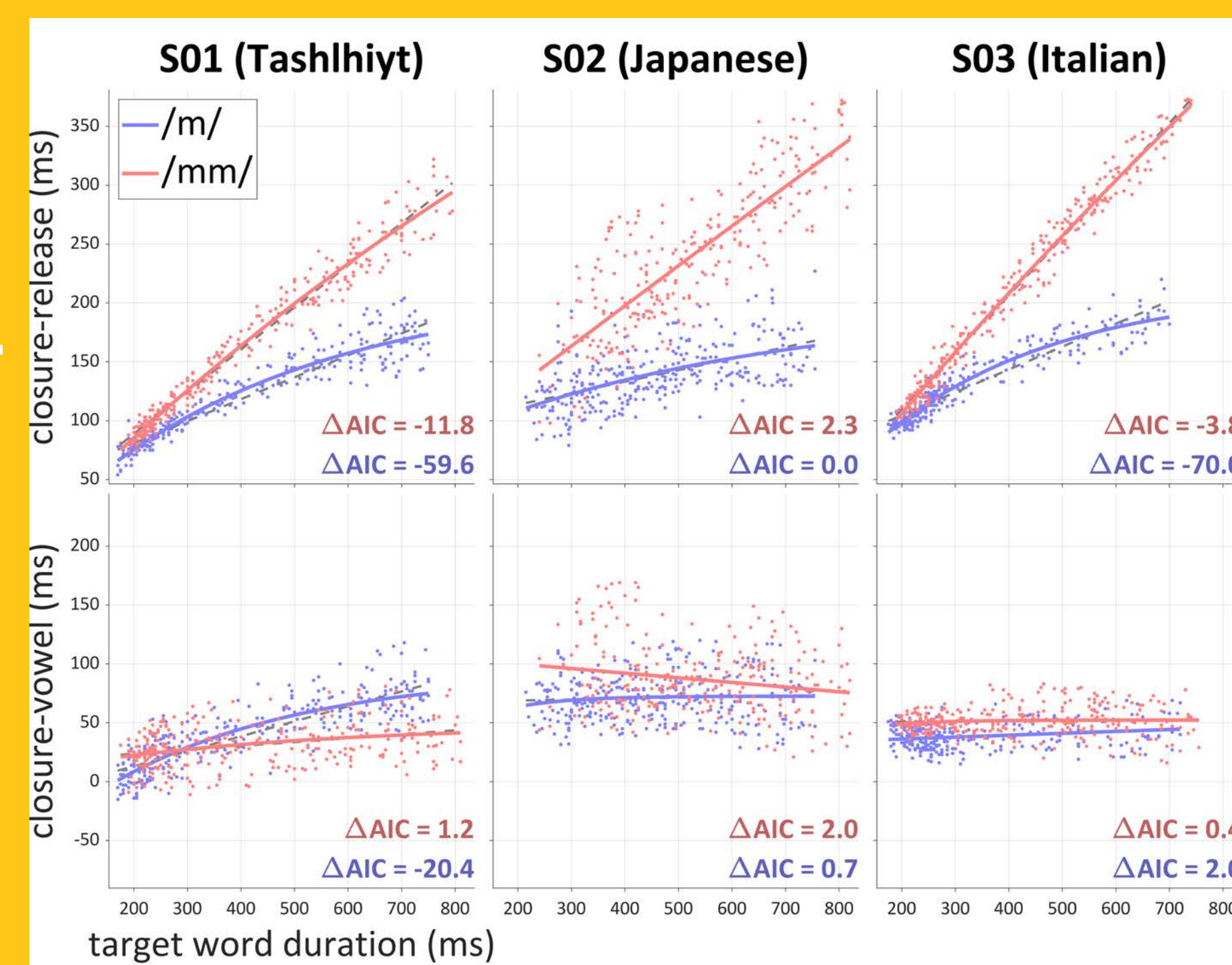
instructions to produce the phrases at the pace that reflected the speed of the moving red box, after it moved off the screen

→ allows characterization of relations between rate and timing

each speaker performed 32 blocks of 20 trials over two sessions (16 blocks per session), resulting in a total of 320 repetitions of each target word (640 trials)

C-R INTERVAL

C-V INTERVAL

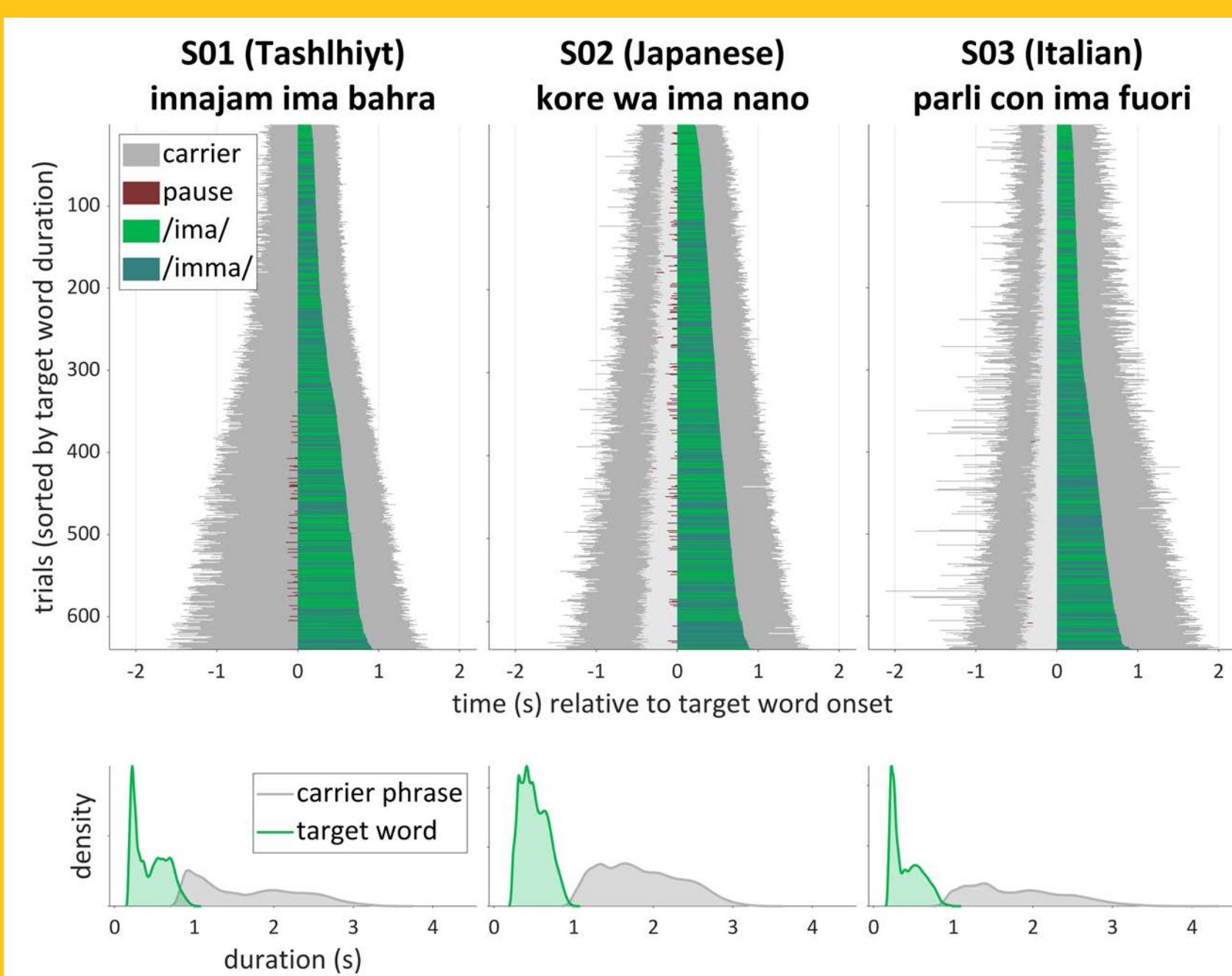


c-r interval increases linearly with rate in **geminate**s, but nonlinearly for **singletons**

c-v interval remains relatively constant over speech rate manipulation in **singletons** and **geminate**s

initiations of C closure and release initiations approx. symmetrically displaced from V gesture initiation in **singletons**, but not in **geminate**s

SPEECH RATE



instructions for speech rate manipulation where successful

target word durations (green) and carrier phrase durations (grey) relatively uniform and spanning a wide range

→ (95% density intervals spanned 2.07 s, 1.74 s, and 2.09 s)

CONCLUSION

c-v interval was relatively constant for both singletons and geminates
→ precise, coordinative control

c-r interval (initiation of closure and release) are coordinatively controlled in singletons, but not in geminates

both intervals appear to be constrained in singletons in a way that it is not in geminates

a possible model to account for this is the competitive control model of selection-coordination theory (Tilsen 2016, 2017), in which gestural activation intervals can be controlled via sensory feedback thresholds

TIMING CONTROL MECHANISMS FOR BOTH SINGLETONS AND GEMINATES ARE RATE-DEPENDENT

TIMING OF CONSTRICTION GESTURES IN SINGLETONS AND GEMINATES CANNOT BE GOVERNED BY A MONOLITHIC CONTROL MECHANISM