



**HAL**  
open science

## Exploring low-magnification dental microwear of domestic ungulates: Qualitative observations to infer palaeodiets

Sergio Jiménez-Manchón, Emilie Blaise, Armelle Gardeisen

### ► To cite this version:

Sergio Jiménez-Manchón, Emilie Blaise, Armelle Gardeisen. Exploring low-magnification dental microwear of domestic ungulates: Qualitative observations to infer palaeodiets. *Quaternary International*, 2020, 557, pp.12-22. <10.1016/j.quaint.2020.02.021>. <halshs-03109568>

**HAL Id: halshs-03109568**

**<https://shs.hal.science/halshs-03109568v1>**

Submitted on 17 Oct 2022

HAL is a multi-disciplinary open access archive for the deposit and dissemination of scientific research documents, whether they are published or not. The documents may come from teaching and research institutions in France or abroad, or from public or private research centers.

L'archive ouverte pluridisciplinaire HAL, est destinée au dépôt et à la diffusion de documents scientifiques de niveau recherche, publiés ou non, émanant des établissements d'enseignement et de recherche français ou étrangers, des laboratoires publics ou privés.



Distributed under a Creative Commons CC BY-NC 4.0 - Attribution - Non-commercial use - International License

## **EXPLORING LOW-MAGNIFICATION DENTAL MICROWEAR OF DOMESTIC UNGULATES: QUALITATIVE OBSERVATIONS TO INFER PALAEODIETS**

-Sergio JIMÉNEZ-MANCHÓN (Corresponding author) ([sergiojimenezmanchon@gmail.com](mailto:sergiojimenezmanchon@gmail.com))

Archéologie des Sociétés Méditerranéennes, UMR 5140, University Paul-Valéry, CNRS, MCC, F-34000, Montpellier, France

LabEx ARCHIMEDE program IA- ANR-11-LABX-0032-01, Montpellier, France

-Émilie BLAISE ([emilie.blaise@gmail.com](mailto:emilie.blaise@gmail.com))

Archéologie des Sociétés Méditerranéennes, UMR 5140, University Paul-Valéry, CNRS, MCC, F-34000, Montpellier, France

-Armelle GARDEISEN ([armelle.gardeisen@cnrs.fr](mailto:armelle.gardeisen@cnrs.fr))

Archéologie des Sociétés Méditerranéennes, UMR 5140, University Paul-Valéry, CNRS, MCC, F-34000, Montpellier, France

LabEx ARCHIMEDE program IA- ANR-11-LABX-0032-01, Montpellier, France

1 **Abstract**

2

3 Low-Magnification Dental Microwear Analysis (LMDA) has been widely applied to reconstruct  
4 the palaeodiet of wild ungulates. Quantitative observations of the microscopic scratches and pits  
5 on the surfaces of the dental enamel of these species allow to distinguish different diets. LMDA  
6 has more recently also served to shed light on the palaeodiets of domestic ungulates such as  
7 caprines. This technique, however, has not been widely applied to domestic ungulates. In fact,  
8 the findings of a recent experimental study indicate that the quantification of pits and scratches  
9 affecting the dental enamel of two groups of ewes do not allow to discriminate between feeding  
10 in rangelands and grasslands. The current study therefore explores the potential of a number of  
11 different qualitative observations (e.g. presence/absence of surface damage or furrows) to  
12 identify the diet of the aforementioned group of ewes. Despite the fact that the results are prone  
13 to intraobserver error, they nonetheless indicate that certain variables can serve to discern  
14 palaeodiets. The model gleaned from the extant ewes was then applied to archaeological  
15 material of caprines from La Ramasse and *Lattara*, two Iron Age sites in southeastern France.  
16 The preliminary results indicate disparities of the type of dental microwear of caprines from one  
17 site to another, differences that could derive from different feeding patterns stemming from  
18 dissimilar environmental conditions or different strategies employed by herders.

19

20 Keywords: caprine palaeodiet, experimentation, Iron Age, southern France, La Ramasse,

21 *Lattara*

## 22 1. Introduction

23

24 Low-magnification dental analysis (LMDA) is a tool that has widely served since the 2000s to  
25 reconstruct the last feeding of animals before their death (e.g. Teaford and Walker, 1984;  
26 Solounias and Semprebon, 2002; Semprebon et al., 2004; Semprebon and Rivals, 2010). Unlike  
27 other techniques known since the 1970s such as examining Scanning electron microscope  
28 (SEM) images (e.g. Rensberger, 1978; Teaford and Walker, 1984; Mainland and Halstead, 2005;  
29 Henton et al., 2017) or the more recent confocal microscopic techniques, as is the case of Dental  
30 Microwear Texture Analysis (DMTA) through Scale Sensitive Fractal Analysis (SSFA) and ISO  
31 parameters (e.g. Scott et al., 2005, 2006; Merceron et al., 2005; Ungar et al., 2007), LMDA  
32 offers the advantage of speed, low cost, and simplicity of interpretation (Solounias and  
33 Semprebon, 2002). LMDA involves direct observation through a low-resolution  
34 stereomicroscopic (35x) of the micro-features (pits and scratches) caused by food, as well as  
35 dust and grit particles, on the occlusal surface of dental enamel. Quantification of the  
36 microscopic scratches and pits has served to shed light on the diet of wild ungulates (e.g. Rivals  
37 et al., 2012). Grazing, in general, is characterised by a great number of scratches and a moderate  
38 number of pits, whereas browsing is evidenced by numerous pits and few scratches (Semprebon  
39 and Rivals, 2007).

40

41 The LMDA technique has more recently served in research on the palaeodiets of domestic  
42 ungulates, in particular caprines (sheep and goats), and to a lesser extent on bovines (e.g. Rivals  
43 et al., 2011; Rieau, 2014; Vaiglova et al., 2014; Gallego et al., 2017; Jiménez-Manchón et al.,  
44 2019). This application sheds light on the livestock practices and strategies of herders/farmers  
45 that cannot be garnered through traditional archaeozoological approaches. Although most of this  
46 type of research has resorted to the same quantitative and reference variables used to observe  
47 the dental microwear of wild ungulates (Solounias and Semprebon, 2002), the use of these  
48 variables in domestic ungulates from experimental programs is largely untested. Consequently,  
49 the capability of these observations to distinguish different diets in domestic ungulates is quite  
50 unknown (Rieau, 2014). This question has been addressed in a present-day referential study  
51 carried out by Ibáñez et al. (this volume). In it, the application of LMDA techniques to two  
52 groups of domestic sheep (Blaise, 2006, 2010; Blaise and Balasse, 2011), respectively grazing  
53 in grassland and rangeland during the last month of their life, points to an overlap of the two  
54 groups. In other words, the use of these variables did not allow discriminate both groups. This is  
55 the reason why we wonder if the use of other variables, like qualitative observations, can be  
56 applied to better distinguish different diets in domestic ungulates.

57

58 Prior observations resorting to the SEM technique have concluded that the consumption of  
59 different types of feed is not only reflected in the type and scratches and pits, but of other traces  
60 gleaned by qualitative observations (e.g. Walker et al., 1978; Puech et al., 1983; Harmon and  
61 Rose, 1988; Ryan and Johanson, 1989; Kelley, 1990; Mainland, 1997). The analysis by Walker  
62 et al. (1978) of two hyrax specimens characterised respectively by browser and grazer regimes  
63 suggests that browsing yields an extremely fine polish to the teeth bringing the underlying  
64 structures into relief, whereas grazing yields an intense wear and multiple episodes of abrasion.  
65 Mainland (1997), in turn, successfully identified, through SEM images, a distinction between  
66 the feeding regimes of domestic sheep by means of the presence/absence of variables such as  
67 parallel scratch marks, surface damage and features with sharp/rounded edges. In spite of that,  
68 this type of observations has not been explored through LMDA techniques.

69

70 The aim of this study is therefore to explore if qualitative observations of the teeth, based on  
71 LMDA, can be applied to distinguish different diets in domestic caprines. A second purpose is,  
72 if the answer is affirmative, to determine which observations contribute most in the model. The  
73 analysis is conducted on the same sheep from a present-day pilot experimental program used by  
74 Ibáñez et al. (this volume). Moreover, the model gleaned from this experimental program is  
75 applied to the reconstruction of palaeodiets of archaeological domestic caprines (sheep and

76 goats) such as those from La Ramasse and *Lattara*, two Iron Age sites from the Mediterranean  
77 area of France.

78

## 79 2. Materials and methods

80

### 81 2.1 Extant comparative material

82 The analysis was carried out on the right hemimandibles of 35 different ewes (*Ovis aries*) of the  
83 “Préalpes du Sud” breed from an experimental research program developed by É. Blaise  
84 (Blaise, 2006, 2010; Blaise and Balasse, 2011). The sheep, products of an extensive breeding  
85 system, are from the Carmejane farm (Digne-Le Chaffaut, Alpes-de-Haute Provence, France).  
86 The sheep, ranging from 1 to 10 years in age, were slaughtered in May 2004. During the last  
87 month of their life, 18 individuals (Group A) grazed in rangelands while the other 17 (Group B)  
88 grazed in grasslands.

89

90 The rangeland areas of Group A comprised a mixture of monocot (50%) and dicot plants (50%)  
91 made up of black pine, shrubs (ash, shadbush and dogwood), oak and grasses (brachypod,  
92 brome grass fescues, Montpellier aphylland, sedge and small legumes). The grasslands of Group  
93 B especially, mostly meadows, consisted for the most part of monocot plants (<80%), a blend of  
94 grasses (cocksfoot), legumes (trefoil, sainfoin, clover) and alfalfa.

95

### 96 2.2 Archaeological material

97 The archaeological analyses were carried out on 12 hemimandibles or low isolated molars from  
98 the sites of La Ramasse and *Lattara*, two Iron Age settlements in the Hérault, a department in  
99 the south of France (Fig. 1). The criteria advanced by Halstead et al. (2002) and Helmer (2000)  
100 served to distinguish the teeth or hemimandibles of the sheep (*Ovis aries*) from the goats (*Capra*  
101 *hircus*). When this distinction was not possible, the samples were classified simply as caprines  
102 (Caprinae). Thus, the final archaeological sampling consisted of eight sheep (*Ovis aries*), three  
103 goats (*Capra hircus*) and one caprine (Caprinae), all adults whose ages were determined  
104 following the criteria of Payne (1973).

105

106 La Ramasse (Clermont-l’Hérault, Hérault) is an Iron Age *oppidum* perched on a small hill (257  
107 m.a.s.l.) in the Hérault River Valley. The settlement, occupied from 530 BC to 400 AD, is  
108 respectively 30 km north of the Greek colony of *Agathé* (Agde) and 30 km northwest of  
109 *Lattara*, sites on the Mediterranean coastline. The seven samples (four sheep, two goats and one  
110 caprine), from different stratigraphic units of Dwelling 6 (450-350 BC) are linked to domestic  
111 consumption (Garcia, 1992, 1993).

112

113 The site of *Lattara* (Lattes, Hérault) was, by contrast, a port city set along a lagoon in the Lez  
114 delta that saw a long continuous occupation ranging from the 6th century BC to the 3rd century  
115 AD. Due to its strategic location, it served as a key centre of trade between the indigenous  
116 populations and Etruscan and Greek merchants. The five samples (four sheep and one caprine)  
117 come from several stratigraphic units of Zone 1 (Py, 1995; Gailledrat, 2014) dated between 450-  
118 325 BC.

119

### 120 2.3 Moulding and casting process

121

122 The moulds and casts serving to make replicas of the teeth for the study of both the present-day  
123 and archaeological samples followed the protocol described by Solounias and Semprebon  
124 (2002) and Semprebon et al. (2004). The process began with a thorough cleaning of their  
125 occlusal surfaces with acetone and ethanol (96%) to eliminate preservation adhesives and dust  
126 particles. The mould was fashioned by first applying a layer of high precision polyvinyl  
127 siloxane dental impression material Provil Novo Light C.D.2 (Heraeus Kulzer) to the teeth. This  
128 first level was then reinforced by a putty (Blue Eco, Detax). The mould, after setting, was then  
129 filled with a transparent epoxy resin cast (C.P Chemistry CPOX P 1069/A - CPEN 1585/B)  
130 produce the replica (Fig. 2). The process was carried out in the CNRS laboratory UMR5140

131 *Archéologie des Sociétés Méditerranéennes* (ASM-University Paul-Valéry Montpellier 3) in  
132 Montpellier (France).

133

#### 134 2.4 Dental microwear analysis

135

136 The analyses were conducted on the anterior or posterior facet of the second lower molar  
137 protoconid (M2) of each right hemimandible. In the case of the younger sheep the analyses were  
138 carried out on the lower first molar (M1). All teeth were scrutinised by a single experienced  
139 observer (SJM). A total of 11 variables, related to the type of enamel surface and scratches, were  
140 taken into account while viewing the teeth with a Leica MZ16 stereomicroscope at a  
141 magnification of either 35x or 60x (depending on the variable). Any form of pit was not used in  
142 the analysis. The origin of these different variables derives either from prior studies (Mainland,  
143 1997; Solounias and Semperbon, 2002) or is original to the current study. The variables  
144 observed at 35x made use of an ocular grid measuring 0.16 mm<sup>2</sup> (Table 1). All samples (extant  
145 and archaeological material) with badly preserved enamel (features with unusual morphology  
146 and size or fresh features made during collecting process) were removed from the analysis  
147 (King et al. 1999). Also, modifications stemming from the casting process such as air bubbles  
148 were discarded.

149

150 The variables correspond to the presence/absence of a total of 11 features on the enamel  
151 surfaces. The variables analysed at 35x are scratches with an Anterior-Posterior Orientation  
152 (APO, Fig. 3.A), scratches with a Buccal-Lingual Orientation (BLO, Fig. 3.B), more than four  
153 Crossed Scratches (XS, Fig. 3C), Empty Areas (E, Fig. 3D) describes as surfaces devoid of  
154 microwear corresponding to a ninth surface of the grid (0.017 mm<sup>2</sup>), Parallel Scratches (PS, Fig.  
155 3.E) and Non-Parallel Scratches (NPS, Fig. 3.F), (E), and Gouges (G). The variables analysed at  
156 60x correspond to the presence/absence of an Enamel Edge (EE, Fig 4.A and 4.B) (e.g.  
157 notches), Furrows (F, Fig. 4.C), Surface Damage (SD, Fig. 4.D), Gouges (G, Fig. 4E) while  
158 Rough Surface Texture (RST, Fig. 4.F and 4.G) relates to the presence/absence of a rough  
159 and/or porous surface visible at either 35x or 60x. Figures 3 and 4 correspond to  
160 microphotographs that illustrated each of the variables. Table 1 summarises and offers a brief  
161 description of each.

162

163 The set was randomly re-analysed twice in order to determine the general level of intraobserver  
164 error as well as to know which variables have a higher error rate. This was carried out by  
165 calculating the percentage of cases for each variable where the results concur. The average of  
166 the two total percentages is hence the index serving to calculate the intraobserver error.  
167 Moreover, the variables most prone to error are discarded for the statistical analysis.

168

169 The descriptions were then followed by the design of a probabilistic and predictive analysis  
170 applying a Logistic Regression (LR), an analysis that allows attaining a probabilistic  
171 classification of the dichotomous categories (Group A: rangeland and Group B: grassland)  
172 based on independent and qualitative variables (predictors). To determine the significance of the  
173 model, this study carried out tests to determine the pseudo R-squared Cox & Snell and  
174 Nagelkerke values as well as the p-value of the Chi square test attaining significance value of  
175  $\leq 0.05$ . Hence, individuals in Group A fall into the well-classified category when their value is  
176  $\leq 0.4$ . Between 0.41 and 0.59 they are considered unclassified, and poorly classified when  $\geq 0.6$ .  
177 Individuals of Group B are well-classified when their value is  $\geq 0.4$ . Values between 0.41 and  
178 0.59 are unclassified while those of  $\leq 0.39$  are poorly classified. The model obtained was then  
179 applied to the archaeological samples to predict the probability, based on the extant comparative  
180 database, which each individual could have grazed in either rangelands or grasslands. This  
181 analysis was carried out using Statistica v.10 (Addinsoft). The model obtained was then applied  
182 to the archaeological samples to predict the probability, according to the extant comparative  
183 database, that each individual could have grazed in either rangelands or grasslands.

184

185 This was followed by a Multiple Correspondence Analysis (MCA) so as to visualise the  
186 relationship between the data. The MCA was designed based on all data, except variables  
187 presenting a high intraobserver error rate and variables that contribute less to the model. The  
188 validity of these variables was made through the Cosine2 values. Finally, archaeological  
189 samples were introduced as supplementary material in order to visualise their distribution in a  
190 second MCA. The analyses were carried out using “FactoMineR” (Husson, 2008) and  
191 “Factoextra” (Kassambara and Mundt, 2017) packages in R statistical software.

192

### 193 3. Results

194

#### 195 3.1 Extant material

196 This section describes the results of Group A (rangeland grazing) and Group B (grassland  
197 grazing) (Supplementary material 1). The dental surfaces of the individuals of Group A (n=18)  
198 are characterised by, in descending order, scratches with an Anterior-Posterior Orientation  
199 (77.8%), Parallel Scratches (61.1%), scratches with a Buccal-Lingual Orientation (55.6%), Non-  
200 Parallel scratches (55.6%) as well as a presence of Furrows (55.6%). The remaining variables,  
201 Crossed Scratches (44.4%), Enamel Edges (38.9%), Surface Damage (33.3%), Empty Areas  
202 (27.8%) and Gouges (27.8%) are only observed in less than half of the examples. Moreover,  
203 about 50% present a Rough Surfaces Texture.

204

205 The dental surfaces of Group B (n=17), in turn, are characterised, in descending order, by  
206 scratches with an Anterior-Posterior Orientation (76.5%), Parallel and Non-Parallel scratches  
207 (70.6% in both cases), scratches with a Buccal-Lingual Orientation (52.9%) and Empty Areas  
208 (52.9%). The remaining variables, Crossed Scratches (41.2%), Gouges (29.4%), Surface  
209 Damage (23.5%), Enamel Edges (17.6%) and Furrows (11.8%), are less relevant. Otherwise the  
210 surfaces of 47.1% are rough (Table 2).

211

212 When comparing the two, individuals of Group A (rangeland grazing) reveal a greater number  
213 of Furrows (F), Surface Damage (SD) and rough enamel edges (EE). Group B (grassland  
214 grazing), in turn, is dominated by non-parallel scratches (NPS), Empty Areas (E), and to a lesser  
215 extent Parallel Scratches (PS). The percentages of the remaining variables are analogous.

216

217 The modern material of sheep was analysed twice more in order to measure the intraobserver  
218 error of both the set and the variables. Of the total of 385 (11 variables multiplied by 35  
219 individuals), this second round yielded the respectively 326 and 361 concurrences, values that  
220 are tantamount to levels of error of 15.3% and 6.2%. The average of the two percentages  
221 equates with an intraobserver error of 10.8%. Observations of the results by variable type (Table  
222 3) indicate that the variables with the lowest probability of error are Parallel Scratches (PS) and  
223 Surface Damage (SD). By contrast, those with a highest probability of error are Rough Surface  
224 Texture (RST) and scratches with Buccal-Lingual Orientation (OBC). These two variables are  
225 reclassified correctly in 65% of the cases. As a result of this low percentage, RST and OBC  
226 variables are excluded from further statistical analyses.

227

#### 228 3.2 Statistical results

229

230 To obtain the statistical results the study firstly designed a Logistic Regression (LR) for Groups  
231 A (rangeland) and B (grassland) based on qualitative variables. The resulting model is  
232 statistically significant as indicated by chi-squared p-value ( $\leq 0.05$ ) and the R2 values (Table 4).  
233 The model presents good classifications of 12 individuals from Group A (66.7%) and 12  
234 individuals from Group B (70.6%) (Table 5 and supplementary material 2). This suggests a  
235 correct classification of more than two thirds of the set (68.6%). The model did nonetheless  
236 incorrectly classify six cases (16.7%), three from Group A and three from Group B, and  
237 ambiguously classified five cases (13.8%), three from Group A and two from Group B. The data  
238 thus indicate a slightly better classification of individuals of Group B than of Group A  
239 (Supplementary material 2).

240  
241 The study then carried out a Multiple Correspondence Analysis (MCA) applying all the  
242 qualitative variables, except variables previously excluded due to high intraobserver error. The  
243 two main dimensions (1 and 2) of the MCA account for 39.7% of the total inertia. In three of the  
244 nine variables (F, XS and G), the Cos2 value is very low (inferior to 0.2) (supplementary  
245 material 3). These data indicate that the contribution of these three variables is less important in  
246 explaining the variations in the dataset. Subsequently, a second MCA was carried out using the  
247 rest of variables (PS, NPS, E, APO, SD and EE) that contribute more significantly (Cos2 value  
248 is superior to 0.3). This second case revealed that dimensions 1 and 2 account for 57.8% of the  
249 total inertia. The variables that contribute most to the model are, in decreasing order, NPS, PS,  
250 EE, SD, APO and E. Thus, group A reveals positive values in Dimension 1 and 2. Group B, in  
251 turn, reveals negative values in Dimension 1 and 2. However, the vertical axis (Dimension 2)  
252 explains the main differences between both groups. The variables that contribute most in the  
253 Dimension 2 are PS, NPS, EE and SD. Plotting the classification variables in the MCA reveals  
254 the presence of Non-Parallel Scratches and scratches with an Anterior-Posterior Orientation,  
255 together with the absence of Empty, Enamel Edges, Surface Edges and Parallel Scratches in the  
256 negative part of the axis, like Group B. In contrast, the presence of Surface Damage and Parallel  
257 Scratches, together with the absence of Empty, Non-Parallel Scratches, and scratches with an  
258 Anterior-Posterior Orientation plot in the positive part of the axis, like Group A.

259  
260 The analyses of archaeological samples were carried out on the occlusal surfaces of seven  
261 caprines (four sheep, two goats and one caprine) from La Ramasse and five caprines (four sheep  
262 and one caprine) from *Lattara* (Supplementary material 3). No sample had to be discarded for  
263 taphonomic reasons. The tooth enamel of the assemblage of the first site is characterised by  
264 more rough/porous Surface Texture (RST), more Parallel Scratches (PS), a higher percentage of  
265 scratches with a Buccal-Lingual Orientation (BLO) and the absence of Empty Areas (E). The  
266 rest of observations were identified in less than half of the samples. At *Lattara* the dental  
267 enamels are characterised by less rough/porous Surface Texture (RST), less Parallel Scratches  
268 (PS) and more Non-Parallel Scratches (NPS). Noteworthy is also a greater presence of Empty  
269 Areas (E), scratches with an Anterior-Posterior Orientation (APO), Furrows (F) and Crossed  
270 Scratches (XS) (Table 5 and Fig. 6).

271  
272 The classification of individuals based on the predictive model garnered from the Logistic  
273 Regression (see section 3.2) placed four individuals from La Ramasse in Group A (rangeland),  
274 one in Group B (grassland) and one as unclassified (Table 6). Three individuals from *Lattara*  
275 are placed in Group B (grassland) and two in Group A (rangeland). This implies that 71.4% of  
276 La Ramasse caprines reveal a palaeodiet compatible with rangelands (Group A) while 28.6% are  
277 compatible with grasslands (Group B). An opposite trend is observed for the individuals from  
278 *Lattara* as 60% of the caprines are linked to grasslands (Group B) while 40% are linked to  
279 rangelands (Group A). Subsequently, the results of the analyses of dental microwear of the  
280 caprines from La Ramasse and *Lattara* were introduced as supplementary material in the  
281 Multiple Correspondence Analysis (MCA) (Fig. 7). The results were correlated with those of the  
282 Logistic Regression (LR). Hence, five individuals from La Ramasse plot in the positive part of  
283 the vertical axis (closer to group A) and two in the part negative (closer to group B). Three  
284 caprines from *Lattara*, in turn, are located in the positive part (closer to group A) and two in the  
285 negative part (closer to group B). These data could indicate a predominance of caprines grazing  
286 on rangeland areas in La Ramasse and a more variable diet in *Lattara*.

#### 287 288 4. Discussion

289 This study focuses on the dental microwear of 35 ewes (*Ovis aries*) from a present-day pilot  
290 experimental program (Blaise, 2006, 2010; Blaise and Balasse, 2011). During the last month of  
291 their life, 18 fed in rangelands (mixture of dicot and monocot plants) and 17 in grasslands  
292 (mostly monocot plants). The supposition is that the different means of feeding of these two  
293 groups during their last month of life should be reflected by different patterns of dental  
294 microwear (e.g. Teaford and Walker, 1984; Grine, 1986; Teaford and Oyen, 1989). The findings

295 indicate that identification and quantification of the pits and scratches by means of LMDA, a  
296 technique serving to distinguish browser and grazer palaeodiets among wild ungulates, does not  
297 serve to distinguish between rangeland and grassland feeding among domestic sheep of the  
298 referential experimental program (Ibáñez et al., this volume). It is for this reason that the current  
299 study chose to delve into the question of whether qualitative variables obtained through LMDA  
300 techniques can serve - or not - to distinguish these two types of diets. To carry this out the  
301 current analysis resorted to 11 variables that are either original to the current study or gleaned  
302 from previous research (Mainland, 1997; Solounias and Semprebon, 2002). This is the first time  
303 that this type of work is applied through LMDA techniques.

304  
305 The results from the Logistic Regression (LR) model show significant differences between ewes  
306 grazing on rangeland and grassland areas. Most specifically, the model indicates a good  
307 discrimination of more than two thirds of the individuals, nearly 70%. Hence, a relationship can  
308 be established between diet and qualitative observations. One of the interests of this study is to  
309 determine which observations contribute most in the model and which variables are more prone  
310 to intraobserver error. Firstly, Rough Surface Texture and scratch marks with a Buccal-Lingual  
311 Orientation present a high degree of intraobserver error. It means that there is a high probability  
312 that these two variables introduce errors in the dataset. Consequently, these variables are not  
313 suitable for further analyses. Secondly, the MCA analysis reveals the low contribution of three  
314 variables: Crossed Scratches, Furrows and Gouges. Conversely, the variables that participate  
315 stronger are, in decreasing order, Non-Parallel Scratches, Parallel Scratches, Enamel Edges,  
316 Surface Damage, scratches with Anterior-Posterior Orientation and Empty. Enamel surface of  
317 two groups of ewes present different trends. On the one hand, tooth enamel of ewes grazing on  
318 rangeland areas is characterised by a higher contribution of the presence of Parallel Scratches, a  
319 Surface Damage and Enamel Edge. On the other hand, enamel tooth of ewes grazing on  
320 grassland areas is characterised by a higher contribution of the presence of Non-Parallel  
321 Scratches, scratches with an Anterior-Posterior Orientation and Empty. Thus, it can be assumed  
322 that differences between diets composed by a mixture of monocot and dicot plants (rangeland  
323 areas) and diets composed mostly by monocot plants (grassland areas) can be identified through  
324 qualitative observations, as presented in previous studies (e.g. Mainland, 1997).

325  
326 It is compelling that, as in the case of the results obtained by DMTA (ISO parameters), Group B  
327 (grassland) has a classification that is slightly better than Group A (rangeland) (Ibáñez et al., this  
328 volume). This could be explained by the different turnover rates of the formation of microwear  
329 features. More precisely, grazer diets generate microwear features quicker than browser diets  
330 (Schulz et al. 2013; Teaford et al. 2017; Winkler et al. 2019). Both groups of ewes from  
331 experimental program had a similar feeding during their life. It was in the last month where  
332 ewes from group A fed on rangeland areas and ewes from group B on grassland areas.  
333 Consequently, the diet of ewes from group B would generate a more rapid accumulation of  
334 traces on tooth enamel due to the presence in grassland of a greater proportion of phytoliths and  
335 abrasive elements than the diet of ewes from group A (rangeland areas). Another explanation  
336 could be found by the higher diversity of plants present in rangeland areas. It would allow ewes  
337 to choose different type of plants in the same rangeland areas (e.g. Schulz et al. 2013;  
338 Ramdarshan et al. 2016; Merceron et al. 2017).

339 Both low-magnification techniques and qualitative variables gleaned from SEM images have  
340 been criticised for lack of objectivity and intraobserver error (e.g. Grine et al., 2002; Galbany et  
341 al., 2005; Purnell et al., 2006; Scott et al., 2006; Mihlbachler et al., 2012; DeSantis et al., 2013).  
342 Given this situation, this study carried out two intraobserver analyses whose findings point to a  
343 correlation average of 89.2%. This denotes that despite being carried out by an experienced  
344 observer, one in ten observations did not match. This equates with a high degree of error when  
345 characterising the features visible on the enamel of teeth, especially in the case of scratch marks  
346 with a buccal-lingual orientation. The observations advanced in this study that offer new criteria  
347 to differentiate the diets of domestic caprines are nonetheless complements to those already in  
348 existence, including confocal techniques. Hence new analyses and methodological approaches  
349 linked to experimental programmes could also serve to define and pinpoint the criteria.

350

351 The predictive model obtained through a Logistic Regression (LR) analysis, as well as the  
352 results gleaned from MCA, then served to determine the diet of the archaeological domestic  
353 sheep and goats from the Iron Age sites of La Ramasse and *Lattara*. Due to their low number, it  
354 has not been possible to analyse and compare the diet between sheep and goats. Thus, despite  
355 this low number, the results appear to indicate the predominance at La Ramasse of a diet in  
356 rangelands (mixture of monocot and dicot plants) while the caprines from *Lattara* suggest a  
357 mixed diet dominated by grazing in grasslands (predominance of monocot plants). Several  
358 hypotheses could explain that. Firstly, these data could indicate different, or more varied,  
359 strategies of feeding employed by herders and farmers in both sites. Secondly, these findings  
360 can be correlated by each site's different environmental conditions. *Lattara* is along the coastal  
361 delta dominated by wetland and lagoons (e.g. Began et al., 2010). La Ramasse is, in turn, an  
362 inland settlement implanted along the southern edge of the Massif Central. Consequently, the  
363 presence of more woodland areas in La Ramasse can be related to rangeland diets. In contrast, a  
364 wet environment in *Lattara* can be compatible with a more grassland diet. A greater tendency of  
365 diets rich in grass when caprines graze in wet areas has already been observed at the Iron Age  
366 site of Ullastret (550-450 BC and 450-325 BC) (Jiménez-Manchón et al. 2019b). One important  
367 consideration that must be taken into account is that dental microwear reflects the last feedings  
368 traits in the animal life. This can imply, therefore, seasonal and food variations. This is why  
369 techniques and methods to estimate the season of death of caprines will be required in future  
370 research.

371

## 372 **5. Conclusions**

373

374 This study reveals the potential of qualitative variables in identifying palaeodiets of domestic  
375 ungulates through low-magnification dental analysis. Observations of the presence/absence of  
376 different features on the surface of the enamel of teeth allowed to distinguish two different types  
377 of diets (grazing in rangeland and grassland) among more than two-thirds of the present-day  
378 referential group of domestic sheep. Contrary to the quantification of scratches and pits, this  
379 approach more clearly distinguishes these diets among domestic caprines. The model obtained  
380 from the referential assemblage of present-day sheep was then applied to the teeth of sheep and  
381 goats from the Iron Age sites of *Lattara* and La Ramasse. The results point to a predominance of  
382 the rangeland diet (mixture of dicot and monocot plants) for the samples from La Ramasse and  
383 grasslands grazing (predominance of monocot plants) for those from *Lattara*. This scenario  
384 could be compatible with palaeoenvironmental data which suggest wetter environment for  
385 *Lattara* and a more forested setting for La Ramasse. However, we have to take into account  
386 other variables affecting dental microwear such as the season of death, the intra-specific  
387 variability (males and females for example) or the inter-specific variability (sheep vs goats).  
388 This is the reason why more samples from these two sites, and from other Iron Age sites from  
389 western Mediterranean area, will be required to validate these hypotheses in future research.

390

391 Overall, this paper demonstrates how the application of other techniques, in this case qualitative  
392 observations, can help to determine the palaeodiet of domestic ungulates. Nevertheless, the  
393 current study does not suggest that this approach replace quantitative variables (identification  
394 and quantification of pits and scratches), but that it serves as complement to other methods,  
395 including confocal techniques.

396

397

398

## 399 **Acknowledgements**

400

401 This project was funded by the “Investissement d’Avenir” program ANR-11-LABX-0032-01 of  
402 the LabEx ARCHIMEDE, University Paul-Valéry 3 Montpellier, France. The authors are  
403 grateful to anonymous referees for their comments on the paper.

## 404 6. References

405

406 Bagan, G., Gailledrat, E., Jorda, C., 2010. Approche historique de la géographie des comptoirs  
407 littoraux de l'Âge du Fer en Méditerranée occidentale à travers l'exemple du port de *Lattara*  
408 (Lattes, Hérault). *Revue de l'Association française pour l'étude du Quaternaire* 21, 85-100.

409

410 Blaise, É., 2006. Référentiel actuel de brebis « Préalpes du Sud » (Digne, Alpes-de-Haute-  
411 Provence France) : pratiques d'élevage et âges dentaires. *Anthropozoologica* 41, 191-214.

412

413 Blaise, É., 2010. Économie animale et gestion des troupeaux au Néolithique final en Provence:  
414 approche archéozoologique et contribution des analyses isotopiques de l'émail dentaire. *British*  
415 *Archaeological Report (International Series)* 2080. John and Erica Hedges Ltd., Oxford, pp.  
416 805-816.

417

439 Blaise, É., Balasse, M., 2011. Seasonality and season of birth of modern and late Neolithic  
440 sheep from south-eastern France using tooth enamel  $\delta^{18}\text{O}$  analysis. *Journal of Archaeological*  
441 *Science* 38, 3085-3093.

442

443 DeSantis, L.R.G., Scott, J.R., Schubert, B.W., Donohue, S.L., McCray, B.M., Van Stolk, C.A.,  
444 Winburn, A.A., Greshko, M.A., O'Hara, M.C., 2013. Direct comparisons of 2D and 3D dental  
445 microwear proxies in extant herbivorous and carnivorous mammals. *PLoS ONE* 8, e71428.

446

447 Gailledrat, É., 2014. Espaces coloniaux et indigènes sur les rivages d'Extrême-Occident  
448 méditerranéen (Xe-IIIe s. av. J.-C.). Montpellier, France: Presses Universitaires de la  
449 Méditerranée.

450

451 Galbany, J., Martínez, L.M., López-Amor, H.M., Espurz, V., Hiraldo, O., Romero, A., De Juan,  
452 J., Pérez-Pérez, A., 2005. Error rates in buccal-dental *microwear* quantification using scanning  
453 electron microscopy. *Scanning* 27, 23-29.

454

455 Gallego, A., Rivals, F., Colominas, L., Palet, J.M., 2017. Pastando en las marismas. Una  
456 aproximación desde la técnica del desgaste dentario a la alimentación del ganado ovino en el  
457 Empordà romano (noreste de la Península Ibérica). *Pyrenae* 48, 93-113.

458

459 Garcia, D., 1992. Les stèles de la Ramasse à Clermont-l'Hérault (Hérault). *Documents*  
460 *d'Archéologie Méridionale* 15, 158-165.

461

462 Garcia, D., 1993. La place de la vallée de l'Hérault dans « l'ibérisation » du Languedoc  
463 méditerranéen. *Documents d'Archéologie Méridionale* 16, 47-52.

464

465 Gordon, K.D., 1988. A review of methodology and quantification in dental microwear analysis.  
466 *Scanning Microscopy* 2, 1139-1147.

467

468 Grine, F.E., 1986. Dental evidence for dietary differences in *Australopithecus* and *Paranthropus*:  
469 a quantitative analysis of permanent molar microwear. *Journal of Human Evolution* 15, 783-  
470 822.

471

472 Grine, F.E., Ungar, P.S., Teaford, M.F., 2002. Error rates in dental microwear quantification  
473 using scanning electron microscopy. *Scanning* 24, 144-153.

474

475 Halstead P., Collins, P., Isaakidou V., 2002. Sorting the sheep from the goats: Morphological  
476 distinctions between the mandibles and mandibular teeth of adult *Ovis* and *Capra*. *Journal of*  
477 *Archaeological Science* 29, 545-553.

478

- 479 Harmon, A.M., Rose, J.C., 1988. The role of dental microwear analysis in reconstruction of  
480 prehistoric diet, in: Kennedy, B.V., Lemoine, G.M. (Eds), Diet and subsistence: Current  
481 archaeological perspectives. Calgary, Alberta: The Archaeological Association of the University  
482 of Calgary, Alberta, pp .267-272.  
483
- 484 Helmer D., 2000. Discrimination des genres *Ovis* et *Capra* à l'aide des prémolaires inférieures 3  
485 et 4 et interprétation des âges d'abattage : l'exemple de Dikili Tash (Grèce). *Anthropozoologica*  
486 31, 29-38.  
487
- 488 Henton, E., Martin, L., Garrard, A., Jourdan, A.-L., Thirlwall, M., Boles, O., 2017. Gazelle  
489 Seasonal Mobility in the Jordanian Steppe: The use of Dental Isotopes and Microwear as  
490 Environmental Markers, Applied to Epipalaeolithic Kharaneh IV. *Journal of Archaeological*  
491 *Science: Reports* 11, 147-158.
- 492 Ibáñez, J.J., Jiménez-Manchón, S., Blaise, É., Nieto-Espinet, A., Valenzuela-Lamas, S.  
493 (forthcoming). Discriminating dietary regimes in modern and archaeological domestic caprines  
494 using low-magnification and confocal dental microwear analyses. *Quaternary International*.  
495
- 496 Jiménez-Manchón S., Valenzuela-Lamas S., Cáceres I., Orengo H., Gardeisen A., López D.,  
497 Rivals F., 2019. Reconstruction of caprine management and landscape use through dental  
498 microwear analysis: The Case of the Iron Age Site of El Turó de la Font de la Canya  
499 (Barcelona, Spain). *Environmental Archaeology* 24, 303-316.  
500
- 501 Jiménez-Manchón, S., Rivals, F., Gardeisen, A., Valenzuela-Lamas, S., De Prado, G., Codina,  
502 F., Santos, M., Castanyer, P., Tremoleda, J., Plana-Mallart, R., 2019b. Alimentation et gestion  
503 pastorale des caprinés chez les Grecs et les Ibères du VI<sup>e</sup> au IV<sup>e</sup> av.n.è. à l'Empordà (nord-est  
504 de la Péninsule Ibérique). *Nouvelles perspectives à partir de la micro-usure dentaire*, in:  
505 Gourichon L., Daujeard, C., Brugal, J.-P. (Eds.) *Humans and caprines : From mountain to*  
506 *steppe, from hunting to husbandry*. Éditions APDCA, Antibes, pp. 227-241.  
507 Kelley, J., 1990. Incisor microwear and diet in three species of *Colobus*. *Folia*  
508 *Primatologica* 55, 73-84.  
509
- 510 King, T., Andrews, P., Boz, B., Basak, B., 1999. Effect of taphonomic processes on  
511 dental microwear. *American Journal of Physical Anthropology* 108, 359-373.  
512
- 513 Mainland, I.L., 1997. A qualitative approach to dental microwear analysis, in: Sinclair, A.,  
514 Slater, E., Gowlett, J. (Eds.), *Archaeological Sciences 1995: Proceedings of a conference on the*  
515 *application of scientific methods to archaeology*. Oxbow Books Monograph Series, Oxford, pp.  
516 213-221.  
517
- 518 Mainland, I.L., Halstead, P., 2005. The Diet and Management of Domestic Sheep and Goats at  
519 Neolithic Makriyalos, in: Davies, J., Fabis, M., Mainland, I.L., Richards, M., Thomas, R. (Eds.),  
520 *Diet and health in past animal populations. Current Research and Future Directions*. Oxbow,  
521 Oxford, pp. 104-112.
- 522 Merceron, G., Blondel, C., Bonis, L., Koufos, G.D., Viriot, L., 2005. A new dental microwear  
523 analysis: application to extant Primates and *Ouranopithecus macedoniensis* (Late Miocene of  
524 Greece). *Palaios* 20, 551-561.  
525
- 526 Merceron, G., Blondel, C., Brunetiere, N., Francisco, A., Gautier, D., Ramdarshan, A., 2017.  
527 Dental microwear and controlled food testing on sheep: The TRIDENT project. *Biosurface and*  
528 *Biotribology* 3, 174-183.  
529

530 Mihlbachler, M.C., Beatty, B.L., Caldera-Siu, A., Chan, D., Lee, R., 2012. Error rates and  
531 observer bias in dental microwear analysis using light microscopy. *Palaeontologia Electronica* 15,  
532 12A.  
533

534 Payne S., 1973. Kill-off patterns in sheep and goats: the Mandible from Aşvan Kale, Anatolian  
535 Studies 23, 282-303.  
536

537 Pineda, A., Cáceres, I., Saladié, P., Huguet, R., Morales, J. I., Rosas, A., Vallverdú, J. 2019.  
538 Tumbling effects on bone surface modifications (BSM): An experimental application on  
539 archaeological deposits from the Barranc de la Boella site (Tarragona, Spain). *Journal of*  
540 *Archaeological Science* 102, 35-47.  
541

542 Puech, P.F., Albertini, H., Serratrice, C., 1983. Tooth microwear and dietary pattern in early  
543 hominids from Laetoli, Hadar and Olduvai. *Journal of Human Evolution* 12, 721-729.  
544

545 Purnell, M.A., Hart, P.J.B., Baines, D.C., Bell, M.A., 2006. Quantitative analysis of dental  
546 microwear in three spine stickleback: a new approach to analysis of trophic ecology in aquatic  
547 vertebrates. *Journal of Animal Ecology* 75, 967-977.  
548

549 Py, M., 1995. Les Étrusques, les Grecs et la fondation de Lattes, in: Arcelin, P., Bats, M., Garcia,  
550 D., Marchand, G., Schwaller, M. (Eds.), *Sur les pas des Grecs en Occident, Hommages à André*  
551 *Nickels*. ADAM-Errance, Lattes, pp. 261-276.  
552

553 Ramdarshan, C., Blondel, N., Brunetière, A., Francisco, D., Gautier, J., Surault, B., Merceron,  
554 B., 2016. Seeds, browse and tooth wear: a sheep perspective. *Ecology and Evolution* 6, 5559-  
555 5569.  
556

557 Rensberger, J.M., 1978. Scanning electron microscopy of wear and occlusal events in some  
558 small herbivores, in: Butler, P.M., Josey, K.A. (Eds.), *Development, function and evolution of*  
559 *teeth*. Academic Press, London, pp. 415-438.  
560

561 Rieau C., 2014. Étude de la gestion du bétail à l'aide de la méthode des micro-usures dentaires  
562 dans le Midi méditerranéen entre l'âge du Bronze et la période gallo-romaine. PhD  
563 Dissertation, University Paul-Valéry de Montpellier 3.  
564

565 Rivals, F., Semprebon, G., Lister, A., 2012. An examination of Dietary Diversity Patterns in  
566 Pleistocene Proboscideans (*Mammuthus*, *Palaeoloxodon* and *Mammuth*) from Europe and North  
567 America as Revealed by Dental Microwear. *Quaternary International* 255, 188-195.  
568

569 Rivals, F., Gardeisen, A., Cantuel, J., 2011. Domestic and wild ungulates dietary traits at  
570 Kouphovouno (Sparte, Greece): Implications for livestock management and paleoenvironment  
571 in the Neolithic. *Journal of Archaeological Science* 38, 528–537.  
572

573 Ryan, A.S., Johanson, D.C., 1989. Anterior dental microwear in *Australopithecus afarensis*:  
574 comparisons with human and non-human primates. *Journal of Human Evolution* 18, 235-268.  
575

576 Schulz, E., Piotrowski, V., Clauss, M., Mau, M., Merceron, G., Kaiser, T.M., 2013. Dietary  
577 abrasiveness is associated with variability of microwear dental surface texture in rabbits. *PLoS*  
578 *ONE* 8(2), e56167.  
579

580 Scott, R.S., Ungar, P.S., Bergstrom, T.S., Brown, C.A., Grine, E.G., Teaford, M.F., Waker, A.,  
581 2005. Dental microwear texture analysis shows within species diet variability in fossil  
582 hominins. *Nature* 436, 693-695.  
583

584 Scott, R.S., Ungar, P., Bergstrom, T.S., Brown, C.A., Childs, B.E., Teaford, M.F., Walker, A.,  
585 2006. Dental microwear texture analysis: Technical considerations. *Journal of Human Evolution*  
586 51, 339-349.

587

588 Scott, R.S., Teaford, M.F., Ungar, P.S., 2012. Dental microwear texture and anthropoid diets.  
589 *American Journal of Physical Anthropology* 147, 551-579.

590

591 Semprebon, G.M., Godfrey, L.R., Solounias, N., Sutherland, M.R., Jungers, W.R., 2004. Can  
592 low-magnification stereomicroscopy reveal diet? *Journal of Human Evolution* 47, 115-144.

593

594 Semprebon, G.M., Rivals, F., 2007. Was grass more Prevalent in the pronghorn past? An  
595 assessment of the dietary adaptations of Miocene to recent *Antilocapridae* (Mammalia:  
596 Artiodactyla). *Palaeogeography, Palaeoclimatology, Palaeoecology* 253, 332-347.

597

598 Semprebon, G.M., Rivals, F., 2010. Trends in palaeodietary habits of fossil camels from the  
599 Tertiary and Quaternary of North America. *Palaeogeography, Palaeoclimatology, Palaeoecology*  
600 295, 131-145.

601

602 Solounias, N., Semprebon, G., 2002. Advances in the reconstruction of ungulate ecomorphology  
603 with application to early fossil equids. *American Museum Novitates* 3366, 1-49.

604

605 Teaford, M.F., Oyen O.J. 2017. Differences in the rate of molar wear between monkeys Raised  
606 on different diets. *Journal of Dental Research* 68, 1513-1518.

607

608 Teaford, M.F., Walker, A., 1984. Quantitative differences in dental microwear between primate  
609 species with different diets and a comment on the presumed diet of *Sivapithecus*. *American*  
610 *Journal of Physical Anthropology* 64, 191-200.

611

612 Ungar, P.S., Merceron, G., Scott, R.S., 2007. Dental microwear texture analysis of Varwater  
613 bovids and early Pliocene paleoenvironments of Langebaanweg, Western Cape Province, South  
614 Africa. *Journal of Mammalian Evolution* 14, 163-181.

615

616 Vaiglova P., Rivals F., Bogaard A., Fraser R., Cavanagh W., Mee C., Renard J., Lamb A.,  
617 Gardeisen A., 2014. Interpreting crop and animal management strategies at Neolithic  
618 Kouphovouno, Sparti, Greece: integrating information from plant and animal isotopes, micro  
619 wear analysis and archeobotanical and zoological studies, in: Touchais, S., Laffineur, R.,  
620 Rougemont, F., (Eds.), *L'environnement naturel et la relation homme-milieu dans le monde*  
621 *égéen protohistorique*. Actes de la 14e Rencontre égéenne internationale. Peeters Publishers,  
622 Paris, pp. 287-296.

623

624 Walker, A., Hoeck, H.N., Perez, L., 1978. Microwear of mammalian teeth as an indicator of  
625 diet. *Science* 201, 908-910.

Winkler, D.E., Schulz-Kornas, E., Kaiser, T.M., Cuyper, A.D., Clauss, M., Tütken, T., 2019.  
Forage silica and water content control dental surface texture in guinea pigs and provide  
implications for dietary reconstruction. *Proceedings of the National Academy of Sciences* 116,  
1325-1330. doi:10.1073/pnas.1814081116

626 **Figures**

627

628 Figure 1. Map of the Iron Age sites of La Ramasse and *Lattara* in the south of France.

629

630 Figure 2. The moulding and casting process of the teeth of a caprine from the site of La  
631 Ramasse (scale= 1cm).

632

633 Figure 3. Microphotographs (at 35x) of the variables Scratch Orientation (A and B), Crossed  
634 Scratches (C), Empty (D), Parallel Scratches (E) and Non-Parallel Scratches (F). The orientation  
635 of the scratch marks A and B is indicated with arrows (scale = 1 mm).

636

637 Figure 4. Microphotographs (at 60x) of the variables Empty Edge (A and B), Furrows (C),  
638 Surface Damage (D), Gouges (E), and Rough Surface Texture (F and G) (scale = 1 mm).

639

640 Figure 5. Graphic representations of the multiple correspondence analyses (MCA), indicating  
641 the total inertia (57.8%). Variable colour scale is based on the squared cosine (Cos2). Higher  
642 values indicate that they are better explained by two dimensions (Dim1 and Dim2). RST=  
643 Rough Surface Texture, PS= Parallel Scratches, NPS= Non-Parallel Scratches, E= Empty Areas,  
644 BLO= Buccal-Lingual Orientation, APO= Anterior-Posterior Orientation, F= Furrow, SD=  
645 Surface Damage; EE= Enamel Edge; and G= Gouge.

646

647

648 Figure 6. Microphotographs of the archaeological samples of La Ramasse (left, A-D) and  
649 *Lattara* (right, E-H) taken at a magnification of 35x (scale= 1 mm).

650

651 Figure 7. Multiple correspondence analysis (MCA) of the individuals and centroid of Groups A  
652 (circle) and B (triangle), together with the archaeological material of La Ramasse (blue) and  
653 *Lattara* (yellow), added as supplementary materials to visualise their distribution.

654 **Tables**

655

656 Table 1. Summary of the variables and their abbreviations serving for the analysis. The table is  
 657 completed with the amount of magnification, the number of the figure with a photograph and  
 658 their description. The values 0 or 1 serve for the statistical analyses.

659

Variable	Magnification	Photograph	Description	Bibliography
Enamel Edge (EE)	60x	2.A and 2.B	0= Absence of cracks along the edge. Rounded and smooth edge; 1= Edge with pronounced cracks.	By authors
Anterior-Posterior Orientation (APO)	35x	2.C	1= Presence of scratches with an anterior-posterior orientation. 0= absence.	Adapted from Mainland, 1997
Buccal-Lingual Orientation (BLO)	35x	2.D	1= Presence of scratches with a buccal-lingual orientation. 0= absence.	Adapted from Mainland, 1997
Crossed Scratches (XS)	35x	2.E	1= Presence of more than 4 crossed scratches in an area less than 0.16 mm <sup>2</sup> . 0= absence.	Solounias and Semprebon, 2002
Furrows (F)	60x	2.F	1= Presence of deep and long scratches (furrows). 0= absence.	By authors. It can be analogous to hypercoarse scratches (from Solounias and Semprebon, 2002)
Parallel Scratches (PS)	35x	2.G	1= Presence of 2 or more parallel scratches. 0= absence.	Adapted from Mainland, 1997
Non-Parallel Scratches (NPS)	35x	2.H	1= Presence of parallel scratches. 0= absence	Adapted from Mainland, 1997
Empty Areas (E)	35x	3.A	1= Presence of a space devoid of microwear (scratches either pits) corresponding to a surface of 0.017 mm <sup>2</sup> calculated by the grid. 0= absence	Adapted from Mainland, 1997
Surface Damage (SD)	60x	3.B	1= Presence or cracks on the surface. 0= absence	Adapted from Mainland, 1997
Rough Surface Texture (RST)	35x and 60x	3.3 and 3.4	0= surface and/or flat. 1= surface steep and porous. Often rough.	Adapted from Mainland, 1997

Gouges (G)	35x	3.5	1= Presence of gouges (large and irregular scars). 0= absence	Solounias and Semprebou, 2002

660  
661  
662  
663  
664  
665  
666

Table 2. Percentage of individuals in Group A (rangeland) and B (grassland) revealing Rough Surface Texture (RST), Parallel Scratches (PS), Non-Parallel Scratches (NPS), Empty Areas (E), Buccal-Lingual Orientation (BLO), scratches with an Anterior-Posterior Orientation (APO), Furrows (F), Surface Damage (SD), Enamel Edge (EE) and Gouges (G).

Group	RST	PS	NPS	E	BLO	AP O	F	XS	SD	EE	G
A	50	61.1	55.6	27.8	55.6	77.8	55.6	44.4	33.3	38.9	27.8
B	47.1	70.6	70.6	52.9	52.9	76.5	11.8	41.2	23.5	17.6	29.4

667  
668  
669  
670  
671  
672  
673

Table 3. Percentage of cases per variable where the classification is correct: Rough Surface Texture (RST), Parallel Scratches (PS), Non-Parallel Scratches (NPS), Empty Areas (E), Buccal-Lingual scratch Orientation (BLO), scratches with an Anterior-Posterior Orientation (APO), furrows (F), Surface Damage (SD), Enamel Edges with cracks (EE) and Gouges (G).

Variable	RST	PS	NPS	E	BLO	AP O	F	XS	SD	EE	G
% of correct classifications	65.7	97.1	80	82.9	65.7	82.9	82.9	85.7	97.1	91.4	91.4

674  
675  
676  
677

Table 4. Indexes and values of the Logistic Regression carried out on the modern caprines.

Index	Value
Maximum Likelihood	14.1384
Likelihood for this model	28.276
Likelihood for this intercept	48.491
Chi squared	20.21479
p Chi squared	0.0166
Degree of freedom	9
R2 Cox & Snell	0.86
R2 Nagelkerke	0.84

678  
679  
680  
681

Table 5. Percentage of the extant ewes classified by group according to the Logistic Regression (LR) model (A= rangeland; B= grassland).

Group	Group A	Group B	Unclassified
Group A	12 (66.7%)	3 (16.7%)	3 (16.7%)
Group B	3 (17.6%)	12 (70.6%)	2 (11.8%)

682

683 Table 6. Percentage of individuals from the sites of La Ramasse and *Lattara* whose dental  
 684 enamel bear Rough Surface Texture (RST), Parallel Scratches (PS), Non-Parallel Scratches  
 685 (NPS), Empty Areas (E), scratches with a Buccal-Lingual Orientation (OBC), scratches with an  
 686 Anterior-Posterior Orientation (OAP), Furrows (F), Surface Damage (SD), Enamel Edges with  
 687 cracks (EE) and Gouges (G).  
 688

Site	RST	PS	NPS	E	OBC	OAP	F	XS	SD	EE	G
La Ramasse	57.1	71.4	71.4	0	85.6	42.9	42.9	42.9	28.6	42.9	42.9
<i>Lattara</i>	40	60	80	40	80	60	60	40	0	20	20

689 Table 7. Classification of each of the individuals of La Ramasse and *Lattara* according to the  
 690 probabilistic model (from 0 to 1) of the Logistic Regression (LR) statistical model (A=  
 691 rangeland; B= grassland).  
 692

Site	Individual	Species	Probability	Classification
La Ramasse	6032-2	<i>Capra hircus</i>	0.640	B
La Ramasse	6007-1	<i>Ovis aries</i>	0.072	A
La Ramasse	6004-1	<i>Ovis aries</i>	0.515	Unclassified
La Ramasse	6034-8	<i>Ovis aries</i>	0.883	B
La Ramasse	6024-1	<i>Ovis aries</i>	0.300	A
La Ramasse	6032-1	Caprinae	0.180	A
La Ramasse	6032-3	<i>Capra hircus</i>	0.256	A
<i>Lattara</i>	53473-8	<i>Ovis aries</i>	0.009	A
<i>Lattara</i>	53473-6	<i>Ovis aries</i>	0.959	B
<i>Lattara</i>	53473-8	<i>Ovis aries</i>	0.826	B
<i>Lattara</i>	53473-15	Caprinae	0.085	A
<i>Lattara</i>	53513-2	<i>Ovis aries</i>	0.842	B



**La Ramasse**

Montpellier

**Lattara**

Narbonne

Perpignan

50 km

N





Archaeological sample



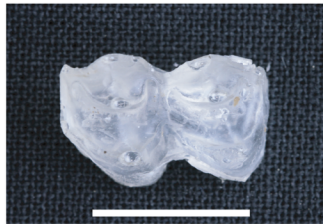
First layer of (high precision) silicone



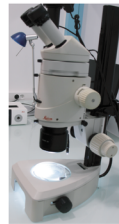
Second layer of putty silicone  
serving to support the mould



Moulds of teeth filled with epoxy  
resin

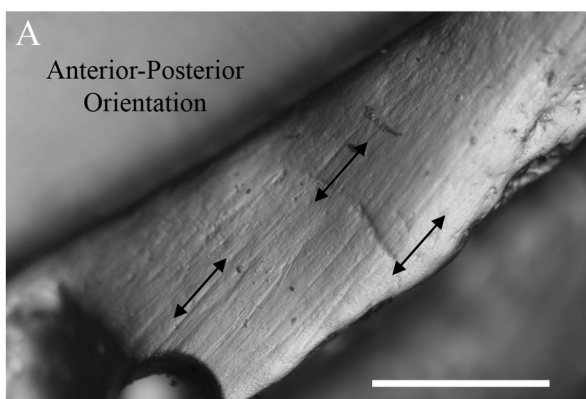


Epoxy resin replica of a teeth  
(lower M2)

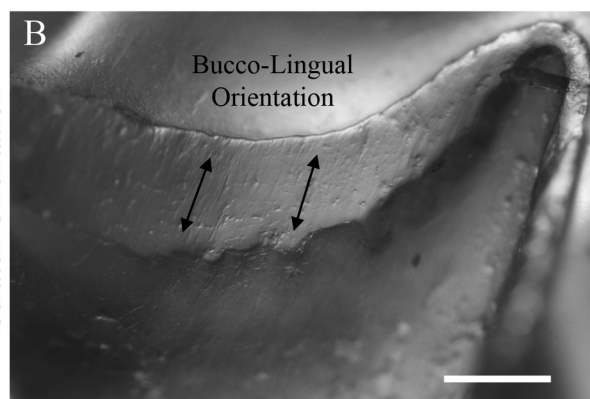


Steremicroscope (Leica MZ 16)  
used to make the observations

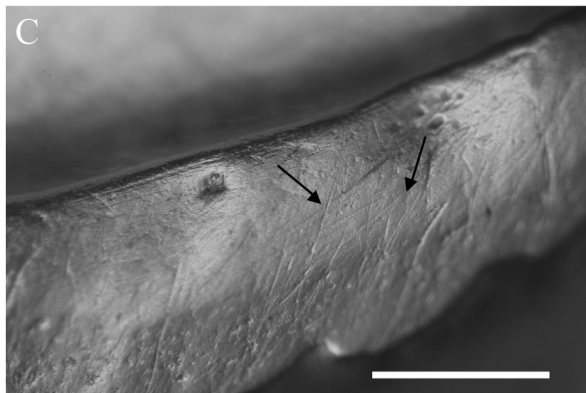
Scratch Orientation



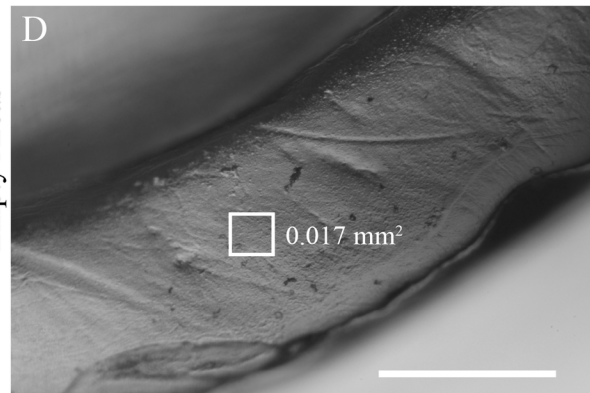
Scratch Orientation



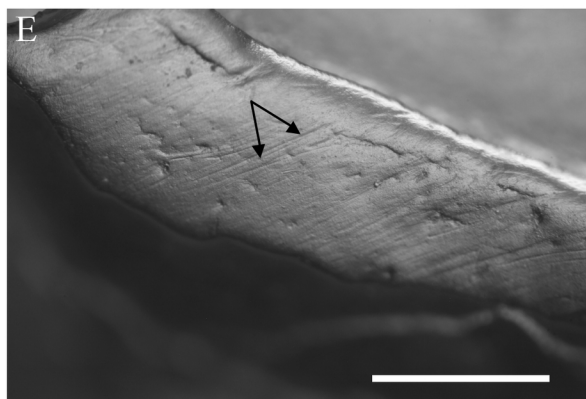
Crossed Scratches



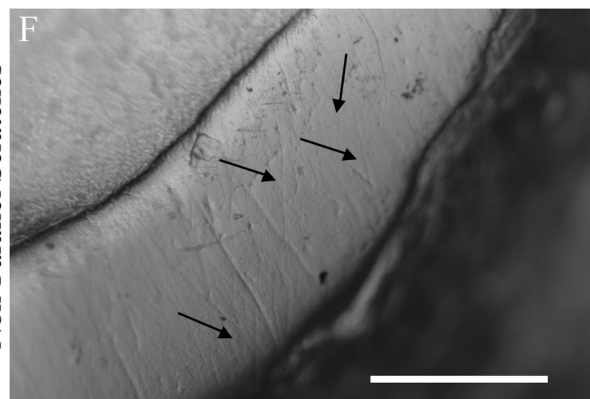
Empty Areas

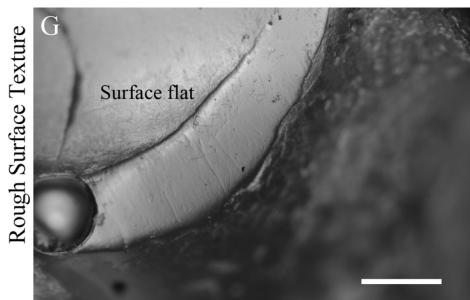
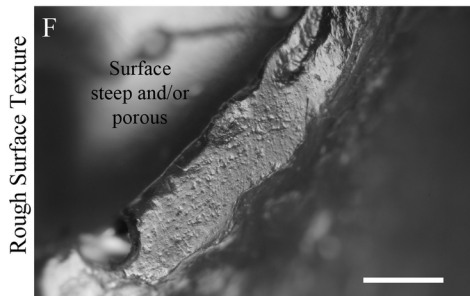
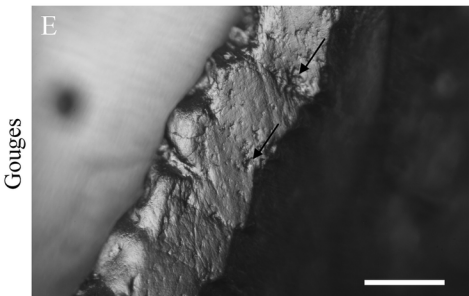
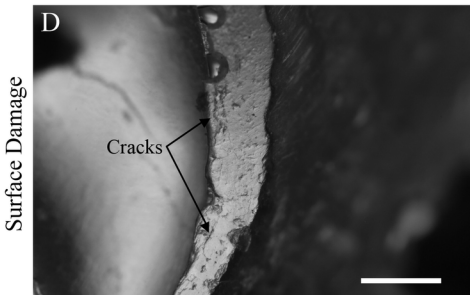
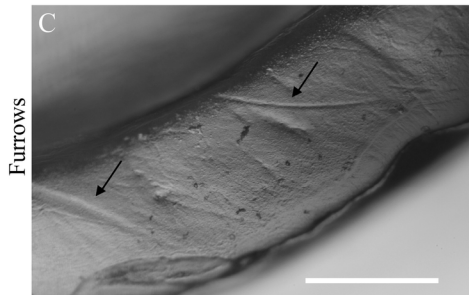
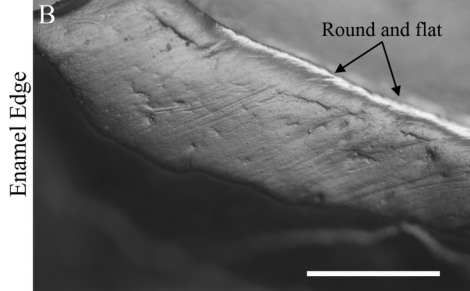
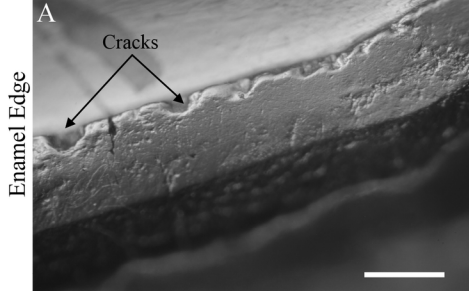


Parallel Scratches

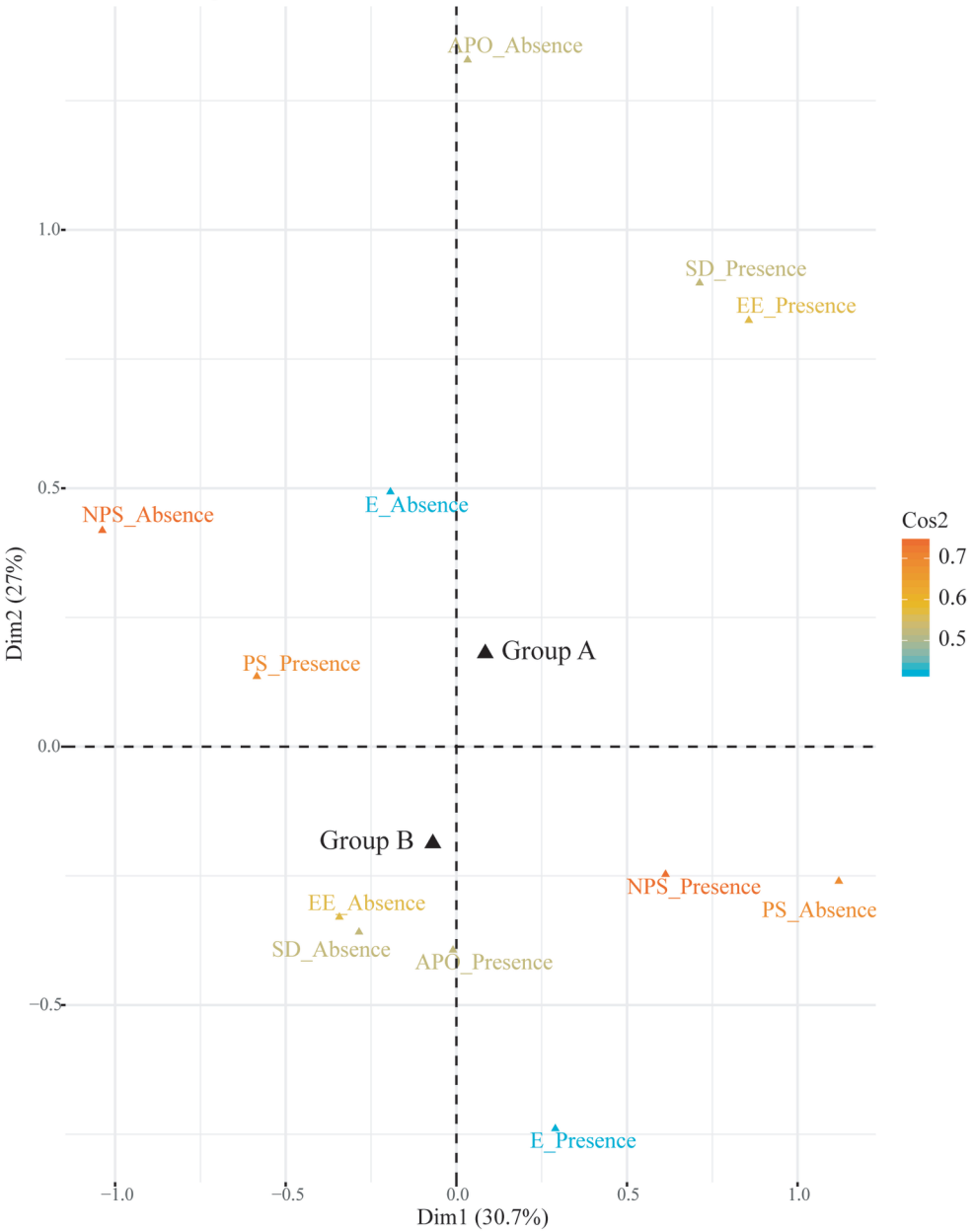


Non-Parallel Scratches

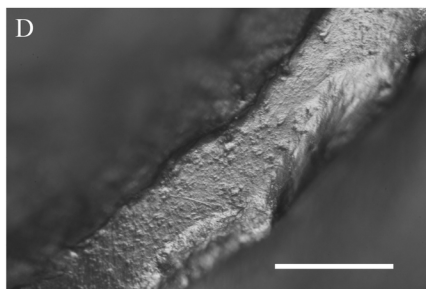
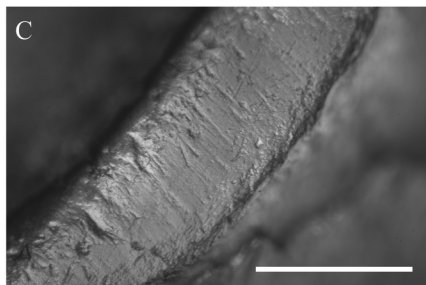
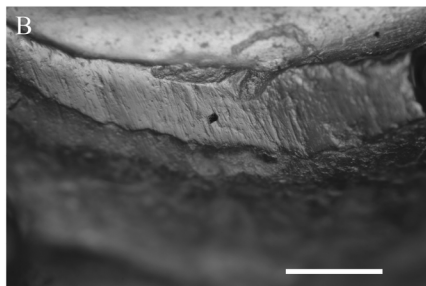
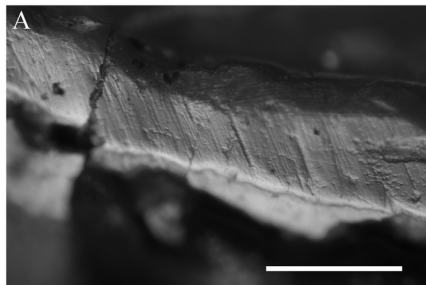




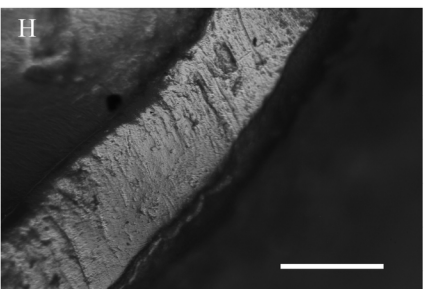
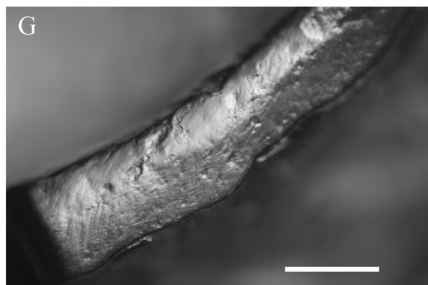
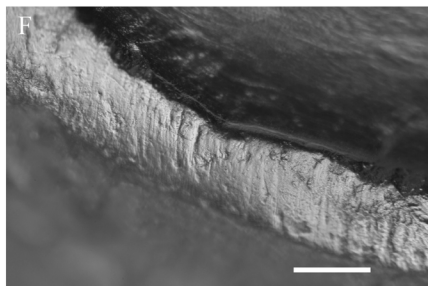
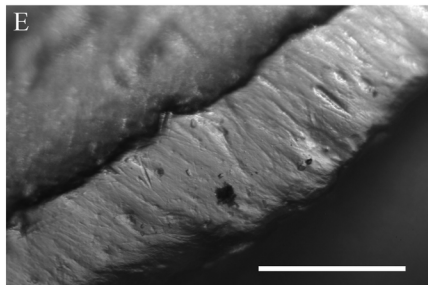
# Variable categories – MCA



# La Ramasse



# Lattara



Individuals – MCA

