



HAL
open science

Early and Middle La Tène Period in the Slovakian Western Carpathians: current state of knowledge

Lucia Benediková, Karol Pieta

► To cite this version:

Lucia Benediková, Karol Pieta. Early and Middle La Tène Period in the Slovakian Western Carpathians: current state of knowledge. Gilles Pierrevelcin; Jan Kysela; Stephan Fichtl. *Unité et diversité du monde celtique. Actes du 42e colloque international de l'Association française pour l'étude de l'âge du Fer (Prague, 10-13 mai 2018)*, 42, AFEAF, pp.383-411, 2020, Collection AFEAF 2, 978-2-9567407-1-1. halshs-03262196

HAL Id: halshs-03262196

<https://shs.hal.science/halshs-03262196v1>

Submitted on 23 Aug 2021

HAL is a multi-disciplinary open access archive for the deposit and dissemination of scientific research documents, whether they are published or not. The documents may come from teaching and research institutions in France or abroad, or from public or private research centers.

L'archive ouverte pluridisciplinaire **HAL**, est destinée au dépôt et à la diffusion de documents scientifiques de niveau recherche, publiés ou non, émanant des établissements d'enseignement et de recherche français ou étrangers, des laboratoires publics ou privés.



Distributed under a Creative Commons Attribution - NonCommercial - NoDerivatives 4.0 International License

Early and Middle La Tène Period in the Slovakian Western Carpathians

Current state of knowledge

Lucia Benediková, Karol Pieta

Introduction

The article deals with the Early La Tène Period and the beginning of the Middle La Tène Period (LT A-LT C1/LT C2) archaeological sources available from the mountain regions of Slovakia, *i.e.* from the Slovakian part of the Western Carpathians. It is the area previously (from the Late Bronze Age till the Hallstatt Period) occupied by the Lusatian Culture, subsequently – from LT C2 period till the Early Roman Period – by the Púchov culture (Pieta 1982; 2012a, 1544-1546).

The archaeological sources for the Early and Middle La Tène Period from the studied territory are represented by materials from settlements, including hilltop settlements and hillforts, refuge places, offering sites, hoards and isolated finds. Any evidence of typical flat La Tène burials is missing.

In the 1970s the Early and Middle La Tène Period data from central and northern Slovakia were gathered under the term 'Pre-Púchov Stage' (perhaps better known under its German equivalent *Vorpúchov-Stufe*) based on the key contexts including finds of specific pottery forms and pottery decoration, researched in the years 1973-1977 in the Liptov region (at the sites Liptovská Sielnica-Liptovská Mara I and VII, Liptovská Sielnica-Starhrad, Kvačany, and Podtureň; Pieta 1982, p. 156, 157). 'Pre-Púchov Stage' monuments were supposed to fill in the gap in this territory between the end of the Hallstatt Period and the beginning of the Púchov culture which is the characteristic manifestation of the Later Middle La Tène period till Early Roman Period of the Slovakian Western Carpathians (as well as in the adjacent territories of northern Moravia and southern Poland). Moreover, it was supposed to characterize the period of the early penetration of the Early La Tène elements into the mountain regions of contemporary Slovakia. The 'Pre-Púchov Stage' was originally dated from LT B2 till the end of LT C2, whereas for the periods of LT A and LT B1 the materials were missing and the continuation of the local Hallstatt culture down to the Early La Tène Period was suggested (Pieta 1982, p. 153). Later, the end of the 'Pre-Púchov Stage' was shifted to sometime within LT C2; it is sometimes during LT C2 that the fully laténised Púchov culture was supposed to come into existence (Pieta 2000a, p. 315-346).

The important trait of this local cultural environment of the Early and Middle La Tène Period of the mountain regions of Slovakia is the absence of burials, so typical for the LT B-LT C stages in the regions south of the analysed territory (south-western Slovakia and the adjacent parts of Pannonia as well as other regions of Europe), where the flat La Tène cemeteries represented the typical attribute of the period in question.

Since the 1970s and even the 2000s, however, new archaeological sources have appeared that have made us re-conceptualize this cultural phenomenon. As the 'Pre-Púchov Stage' was supposed to have been characterised by its unique pottery and chronologically related metal items, the problem with the current state of the research is the lack of significant new data on pottery, and so the only larger assemblages of the characteristic pottery from stratified contexts still come exclusively from the site of Liptovská Sielnica-Liptovská Mara and Liptov region, one smaller assemblage from Nová Lesná in the Spiš region, and another, currently being excavated, in the territory of Brusno in the Upper Hron river valley (excavations 2017, 2018; M. Kvietok, personal communication.; *cf.* **fig. 1**). In other areas of the Slovakian Carpathian mountains (especially the Middle Váh river valley and Turiec region), some (mostly hilltop) settlements yielded metal objects that enable us to date the individual sites, but (without associated pottery) do not allow for their reliable cultural assigning. On the other hand, several sites, in which we encounter pottery of a 'classical La Tène' rather than a 'Pre-Púchov' character (*e.g.* Detva, Kalamárka site; *cf.* below), have usually been automatically assigned to a 'Pre-Púchov Stage' area based simply on their geographical position 'in the mountains' disregarding the cultural affiliation of their material assemblage.

The goal of our contribution is to gather sources from the Early and Middle La Tène Period from the central and northern Slovakian mountain regions, to present a dataset of both portable objects and immovable features and to try to identify the pattern of individual types of metal objects, available pottery, and settlement structures. Based on these materials the chronological development of the occupation of this territory will be defined and the differences or similarities of individual regions of central and northern Slovakia during the Early and Middle La Tène Period will be characterized.

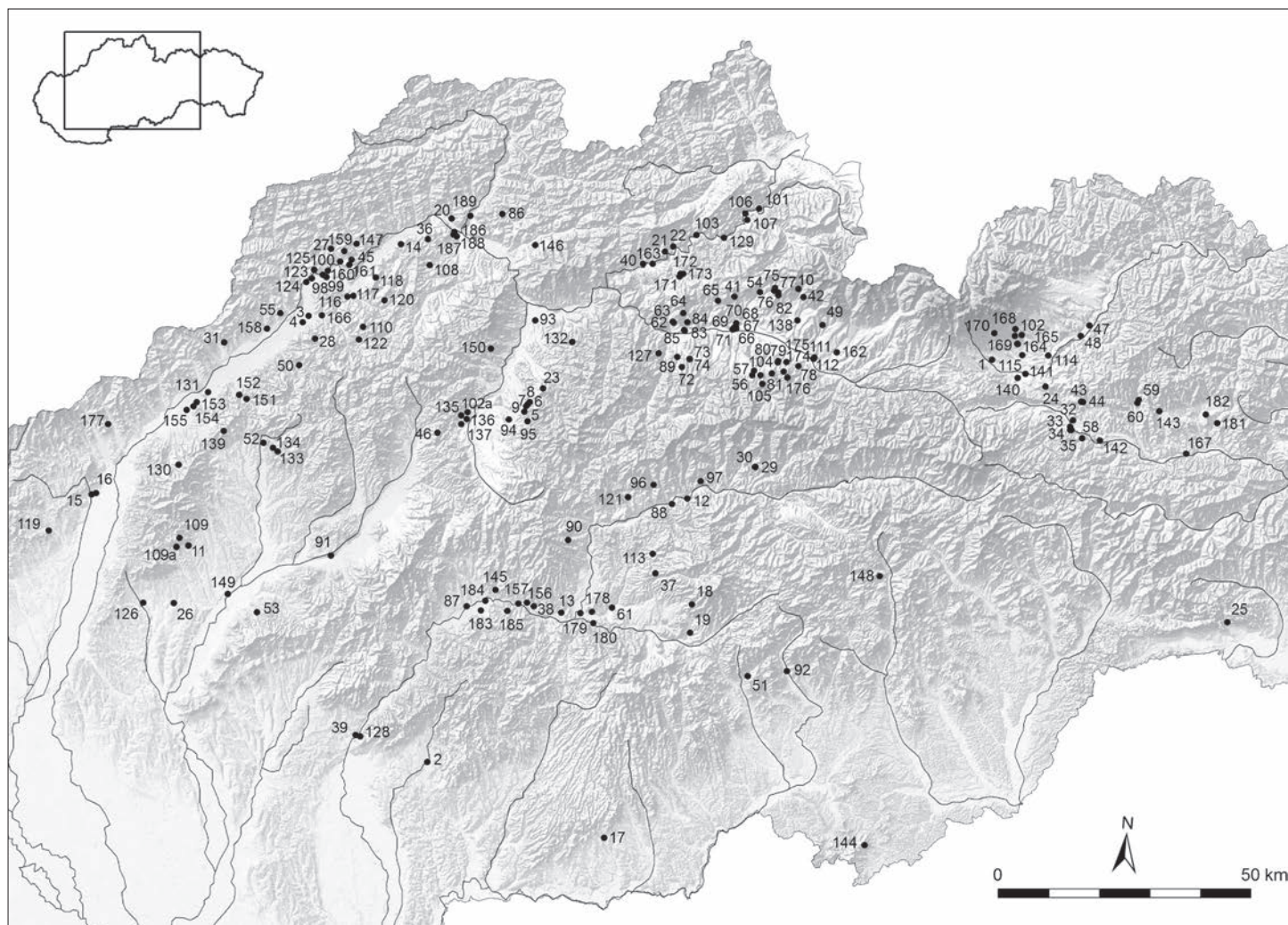


Fig. 1. Late Hallstatt-early Middle La Tène Period sites (late Ha D-LT C1/ C2) in Slovakian Western Carpathians (cf. table 1). Map by L. Benediková and M. Bartík.

1. Early and Middle La Tène Period in the territory of the Slovakian Western Carpathians (LT A-LT C1)

We have already presented elsewhere the sources for the Late Hallstatt-Early La Tène Period in the territory of the Slovakian Western Carpathians from the perspective of local refuge places of that time (Pieta *et al.*, in preparation). By that time, the Hallstatt Period cemeteries, settlements and hillforts in the region were being abandoned while refuge sites in extreme locations (hill tops of over 1000 m. a. s. l.) came into use, especially in the Liptov Basin. This period is characterized by typical local pottery and the metal products of local workshops, such as beaded rings (*geperlte Ringe* or *Buckelringe*), pins of the Orava type or diadems of the type Istebné (Benediková 2014, p. 15-33; 2017, p. 335-381).

The monuments of the Early and beginning of the Middle La Tène Period of central and northern Slovakia including remarks on the so-called 'Pre-Púchov Stage' were also briefly characterized

in the above cited manuscript (Pieta *et al.*, in preparation). Here we take the opportunity to add recently obtained sources that are contributing to a better comprehension of this period in the region whose southern border is identical to the northern border of the flat La Tène cemeteries of south-western Slovakia (fig. 14; table 1).

1.1. Primary sources from the Liptov region

Besides the first known collections from the Liptov region mentioned above (cf. Introduction), the habitation area of Liptovská Sielnica-Liptovská Mara II (being part of a larger settlement area within the site), excavated in the 1980s and 1990s yielded a complete stratigraphy from the Early La Tène till the Early Roman Period (Pieta 2000a, p. 315-346). Based on this context, even though not being complexly analysed and evaluated as yet, the beginning of the 'Pre-Púchov Stage' was clearly within LT B2 and its end within LT C2 (Pieta 2000a, p. 339-340). The 'Pre-Púchov'

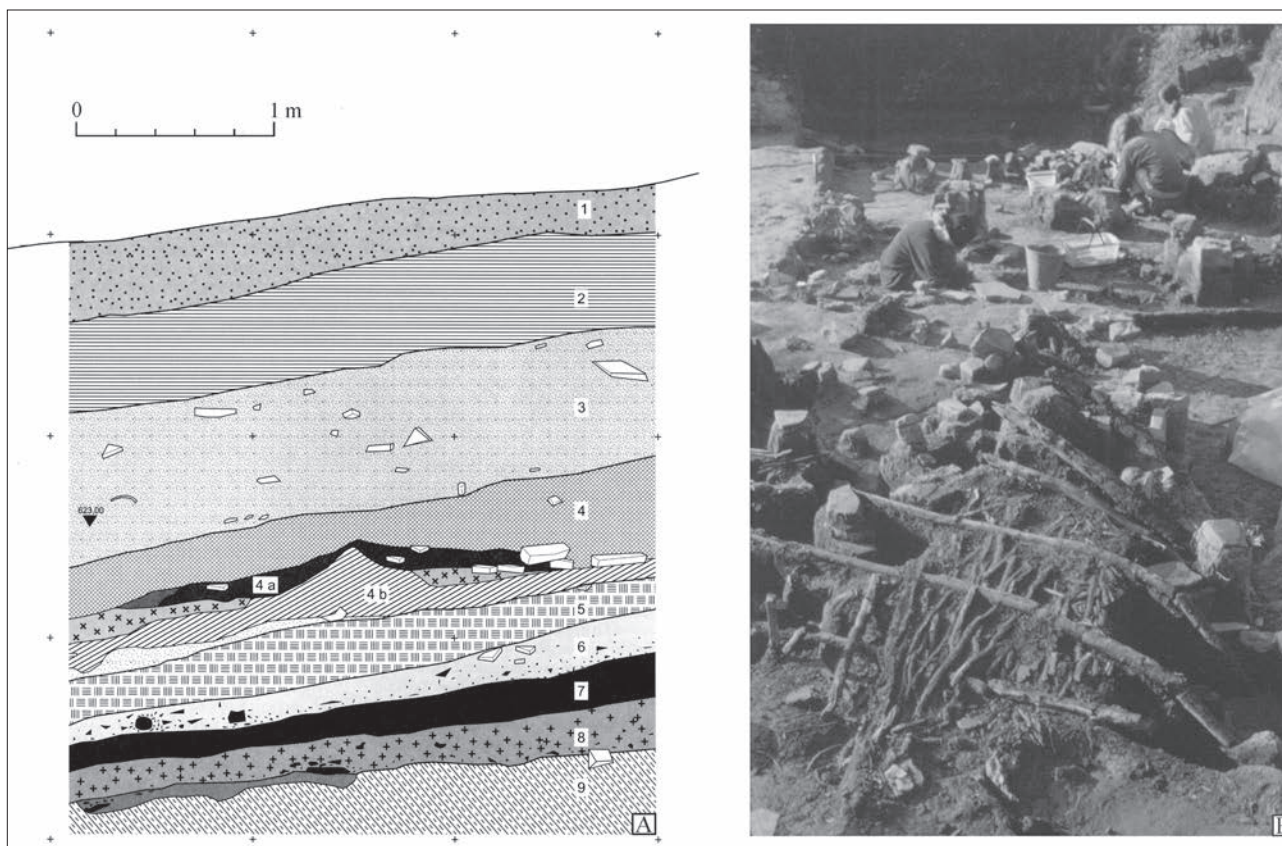


Fig. 2. Liptovská Sielnica-Liptovská Mara II/Rybníky. A. Stratigraphy within the excavation area 2. Layer 8. Earlier 'Pre-Púchov Stage'; Layer 7. Sterile sediment; Layer 6. Younger 'Pre-Púchov Stage'; Layer 5. Levelling layer after 'Pre-Púchov Stage' (after Pieta 2000a, p. 325-329, fig. 2). B. Segment of layer 6 finding situation (collapsed wooden fence; after Pieta 2008, fig. F15).

layers in this stratigraphical complex are represented by a younger Pre-Púchov layer no. 6 and an older Pre-Púchov layer no. 8, separated by a sterile layer formed by a natural sediment (no. 7; fig. 2; Pieta 2000a, fig. 2).

Among the materials from Liptovská Mara II 'Pre-Púchov' layers, there are some ceramic forms which can be dated to the period before or within the LT B2 stage – namely to the horizon between LT A and LT B2a (fig. 3, n°4, 5, 13, 15; cf. also Pieta *et al.*, in preparation). The fragment of a vase with black slip (graphite) decoration, not analysed in detail in the mentioned manuscript (fig. 3, n°20), also has analogies among the forms of LT B1 and LT B2 dates, *e.g.* a rather distant one in Pottenbrunn, dated to LT B1-LT B1/B2 (Ramsel 2002, p. 146, fig. 147, 148, pl. 70, n°570-579), and another one at the cemetery in Kistokaj-Küteltek (grave No. 12), dated to LT B2 (Hellebrandt 1999, p. 202, 212, 215, fig. 137, pl. LXXII: 29).

Similarly, also some of the metal forms from the settlement area of Liptovská Sielnica-Liptovská Mara (sites II and III) point to LT B1 and/or to the earlier stages of LT B2 (fig. 3, n°18, 19; Pieta *et al.*, in preparation, with analyses of particular forms). A fragment of an iron fibula with a reinforced arched bow and eight coiled springs with a central axis bar (fig. 3, n°19) has analogies with the Early La Tène construction iron fibulae with a spherical foot and highly arched reinforced bow, type EF-C2 after J. Bujna (2003, fig. 38) which can be dated to LT B1b-c. An iron fibula with a reinforced bow and long foot with a spherical ending

(fig. 3, n°18) finds its analogy in type EF-C3 or C4 after J. Bujna (2003, fig. 38), dated to the stages LT B1c-LT B2a. Hewing knives of the Dürrnberg type with or without a reinforced knob on the grip are dated to the LT B or to its later part, with a possibility of their use also in the LT C stage (Osterhaus 1981, p. 13, 14). Objects of these types suggested the hypothetical conclusions that the beginnings of the 'Pre-Púchov Stage' may lie earlier than so far supposed, *i.e.* in LT B1 or perhaps even as early as LT A (Pieta *et al.*, in preparation).

Another noteworthy artefact from the site of Liptovská Mara II is a simple iron belt hook (fig. 3, n°16; Pieta 2000a, fig. 5, n°26). This artefact can be classified as a loop belt hook made of a narrow iron band, with a loop on one end and a hook on the other; most parallels can be found in the territory west of the Oder river, namely in the middle and southern Oder-Elbe region, though occurring also (as evidence of contact of both territories) *e.g.* among the finds of the Poienești-Lukaševka culture (designated there as type III 3; Babeș 1993, p. 104, fig. 26, n°III3). This type represents stage I of the Poienești-Lukaševka culture, *i.e.* the period of the late LT C1 and LT C2 (Babeș 1993, fig. 44, 45).

Metal artefacts characterising the 'Pre-Púchov Stage' as originally defined include besides La Tène types, also elements of local dress and jewellery, such as pins (cf. Pieta 1982, pl. LV, n°1).

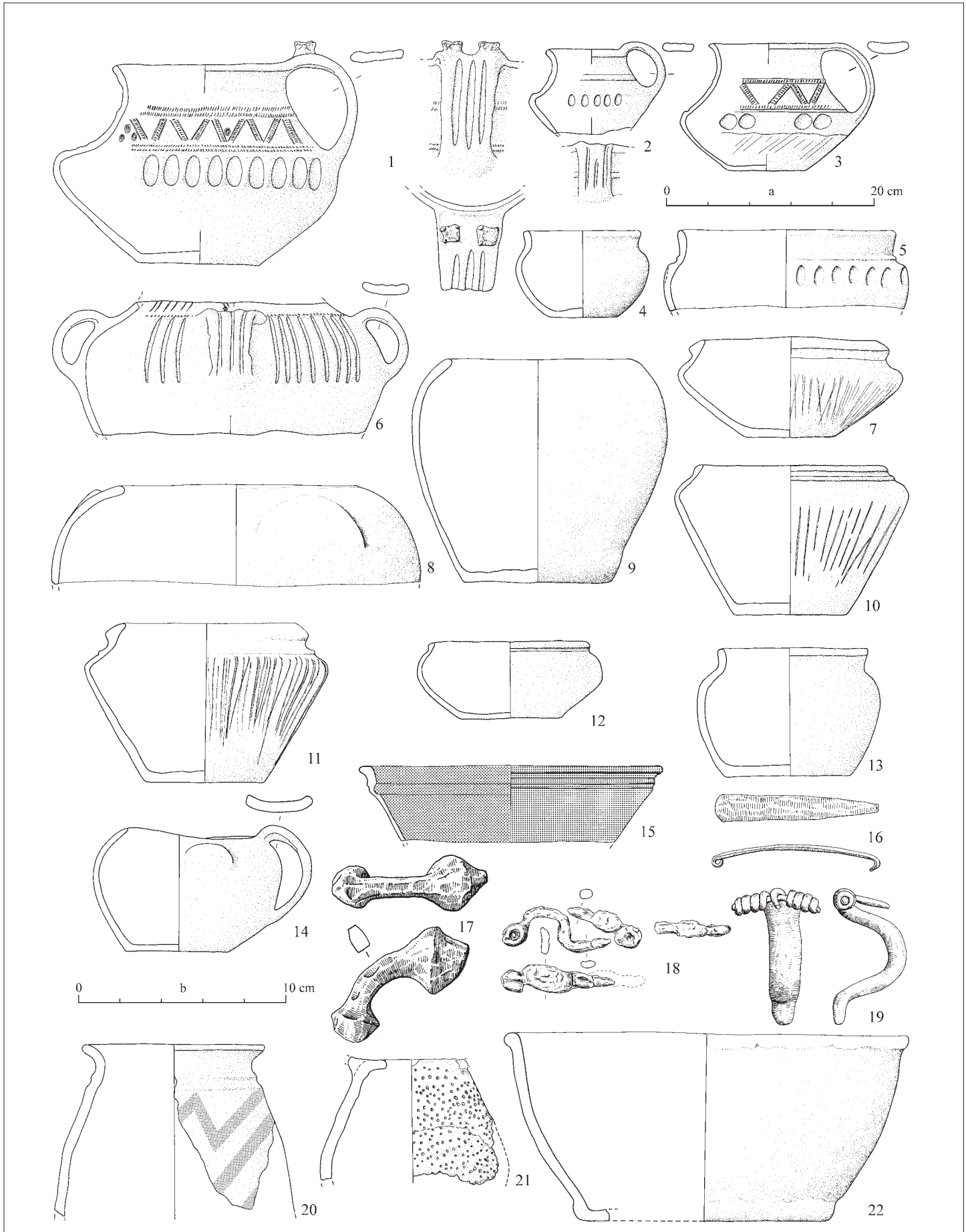


Fig. 3. Finds of Early and Middle La Tène Period ('Pre-Púchov Stage') from Liptovská Sielnica-Liptovská Mara II (1-16, 19-22) and III (17, 18; 1-22 after Pieta 1996, pl. I/1, 4-redrawn; 2000a, fig. 5, n°26, 27; 8). 16-19. Iron, the rest – pottery. Scale: a. 1-15, 20-22; b. 16-19.

1.2. Early and Middle La Tène Period (LT A-LT C1) sources from other regions of the Slovakian Western Carpathians

Pottery

Although in the time and area in question, pottery is usually used as a cultural determinant of the 'Pre-Púchov Stage', it is rather problematic to date the majority of pottery assemblages from Liptov (and other regions where available) due to the lack of chronologically reliable finds.

Besides the above mentioned collections from Liptovská Sielnica-Liptovská Mara and other sites in the Liptov region, and the one from Brusno in the Upper Hron river valley,¹ one pottery assemblage with similar forms and decoration is known also from Nová Lesná in the easternmost region of the studied territory – Spiš.

The Nová Lesná assemblage comes from the rescue excavations of a fortified site where cultural layers, the remains of a fortification and a semi-sunken dwelling have been investigated (Pieta 2003, fig. 1). The pottery collection contains forms and decoration elements that can be dated to the long time span from the Late Hallstatt till the Early La Tène Period (Ha D2-LT B; fig. 4). A remarkable attribute of the pottery collection from Nová Lesná, detected also at other sites, is the presence of vessels with zoomorphic appliques on top of the handles (fig. 5). This (seemingly) characteristic element cannot be more precisely dated, nor culturally assigned in different regions of Slovakia (a 'Pre-Púchov' or 'Vekezug culture' element with a broad dating from Ha D till LT B, the stylised forms of the appliques are known even from the LT C stage; cf. Miroššayová 1999, p. 160, 164; Pieta 2000a, p. 339; Benediková 2017, p. 362).

Another point to discuss are the sites in the southern part of the studied territory with pottery collections typical more for the La Tène culture, than for the cultural environment of mountain regions as presented above.

Published pottery from Detva, site Kalamárka (hillfort; fig. 6, n°1-4), has analogies at LT B2-LT C cemeteries or other sites in contemporary Hungary and south-western Slovakia (cf. e.g. Csörög; Farnos, grave 4; Ózd; Penc-Bokhegy, graves 2, 3-4; Rezi-Rezicséri, grave 49; Palárikovo II, offering site; Paulík, Zachar 1975, p. 318, fig. 22: 2; Horváth 1987, p. 125, 166, pl. XXVII: 6; Hellebrandt 1999, p. 15, 29, 35, 239, pl. IV: 1, VII: 12, XIII: 4, 6, LXXVII: 12). Regarding the broad dating of analogies, as well as the non-ceramic finds from the site (cf. chapter "Artefacts from the horizon LT B2(b)-LT C1" below) it cannot be excluded that the Detva hillfort was not settled earlier than during the laténised Púchov culture later in LT C.

Kalamárka in Detva is a typical example of a site which was more or less automatically considered a 'Pre-Púchov' site – due to its location in the mountain environment outside the distribution area of flat La Tène cemeteries – without reasoning what exactly should stand for 'Pre-Púchov' attributes here (cf. e.g.

Šalkovský 1994, p. 83; 2009, p. 42). Such a practice is, however, obvious in the majority of works dealing with the Early and Middle La Tène materials from northern and central Slovakia.

Another example of La Tène culture penetration into the Slovakian Western Carpathians is a disturbed grave from Batizovce with a bowl, bronze finger ring, and a saddle-bent bracelet datable to LT B1b-LT B2a (fig. 6, n°9-11; cf. Pieta *et al.*, in preparation).

From the Western Carpathians outside the zone of flat La Tène cemeteries the pottery of a La Tène nature dated to the LT C period can be named also from the offering pyre ('Brandopferplatz') in Slatina nad Bebravou, where, however, the site foundation is positively dated already to the late LT C1 (Pieta 2018, p. 100-104, 107, 108, fig. 10, 11).

Metal artefacts from the horizon LT A-LT B2(a/b)

The beginnings of La Tène culture penetration, *i.e.* also the beginnings of the actual La Tène Period in northern and central Slovakia are represented most convincingly by metal artefacts – typologically of a La Tène nature. Chronologically they fill in the gap between, on the one hand, the Late Hallstatt-beginning of the Early La Tène Period local Hallstatt cultural manifestations and on the other hand the beginnings of the 'Pre-Púchov Stage' as originally defined, *i.e.* the end of LT B. As such they can be dated to the LT A-LT B2a stages.

The jewellery that had already been in use during the previous Late and Final Hallstatt Period (Ha D) is represented by beaded (arm-/foot-)rings. These forms – if not accompanied by other artefacts – can be dated to a rather broad time span of Ha D-LT B1 (Benediková 2017, p. 357-360, with references).

The example of already different *Buckelringe* having the La Tène typological attributes and being found together with typical Early La Tène torcs with buffer ends are known from Pružina (fig. 7, n°21-24). They have analogies in LT B1 graves (Möller 2000, fig. 6, 7) with possible models in younger LT A (e.g. Parzinger 1988, pl. 72, n°112, 79, n°86, 86).

Fibulae are a remarkable group of finds. Some of the brooches available were already analysed in Pieta *et al.*, in preparation (fig. 7, n°1-3, 5-7, 11-13, 15, 16, 20). Types characteristic of LT A (fig. 7, n°1-3), (late) LT A-LT B1 (fig. 7, n°7, 13, 16), LT B1 (fig. 7, n°11, 15), and LT B1c-LT B2a (fig. 7, n°5, 12, 20) can be identified among them (Pieta *et al.*, in preparation). Previously known and published was also a fibula from Čachtice (Middle Váh valley region) that can be assigned to Bujna's type BF-A2-B (LT B1c; fig. 7, n°8; Bujna 2003, p. 47, fig. 5, 62). A group of Certosa brooches known from the region has been enriched by examples from Háj in Mošovce (fig. 7, n°4, 9). According to their morphology both belong among the derivatives of later types, probably of type VII as defined by B. Teržan (1976). One of them has an untypical – twisted – bow (fig. 7, n°4). Type VII(g) is represented by a smaller item from Vyšný Kubín (fig. 7, n°6). The brooches of type VII belong to the most frequent variants of this type within the Alpine region and their late variants (e-h) stand for later Certosa brooches from the Early or even Middle La Tène Period (LT A-LT C; Teržan 1976, p. 432, 433, 436).

¹ At the moment the finds from the Brusno site are not yet published and the excavations are still in progress.

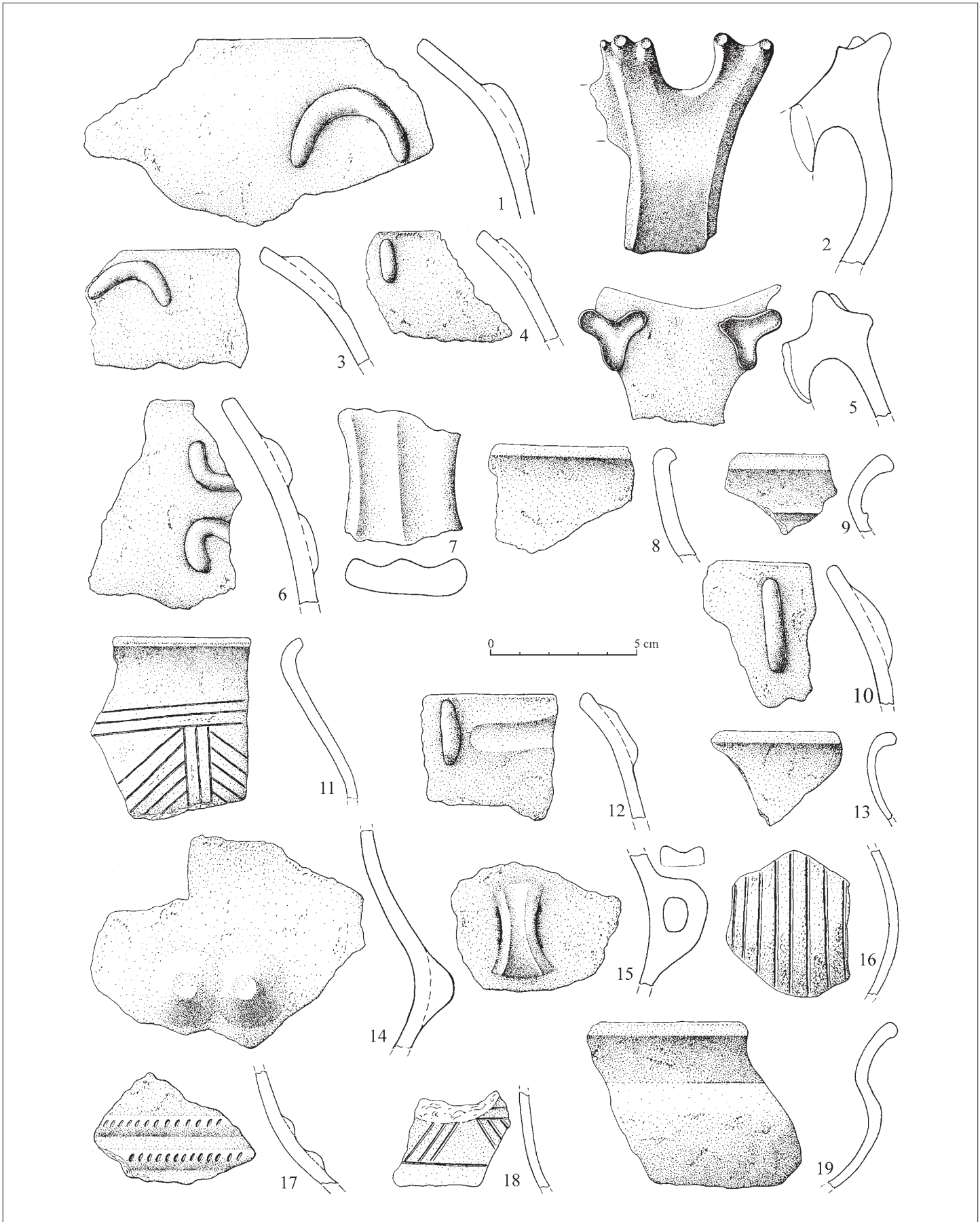


Fig. 4. Nová Lesná, Hliník/Pieskovisko/Piesková baňa (after Pieta 2003, fig. 1).

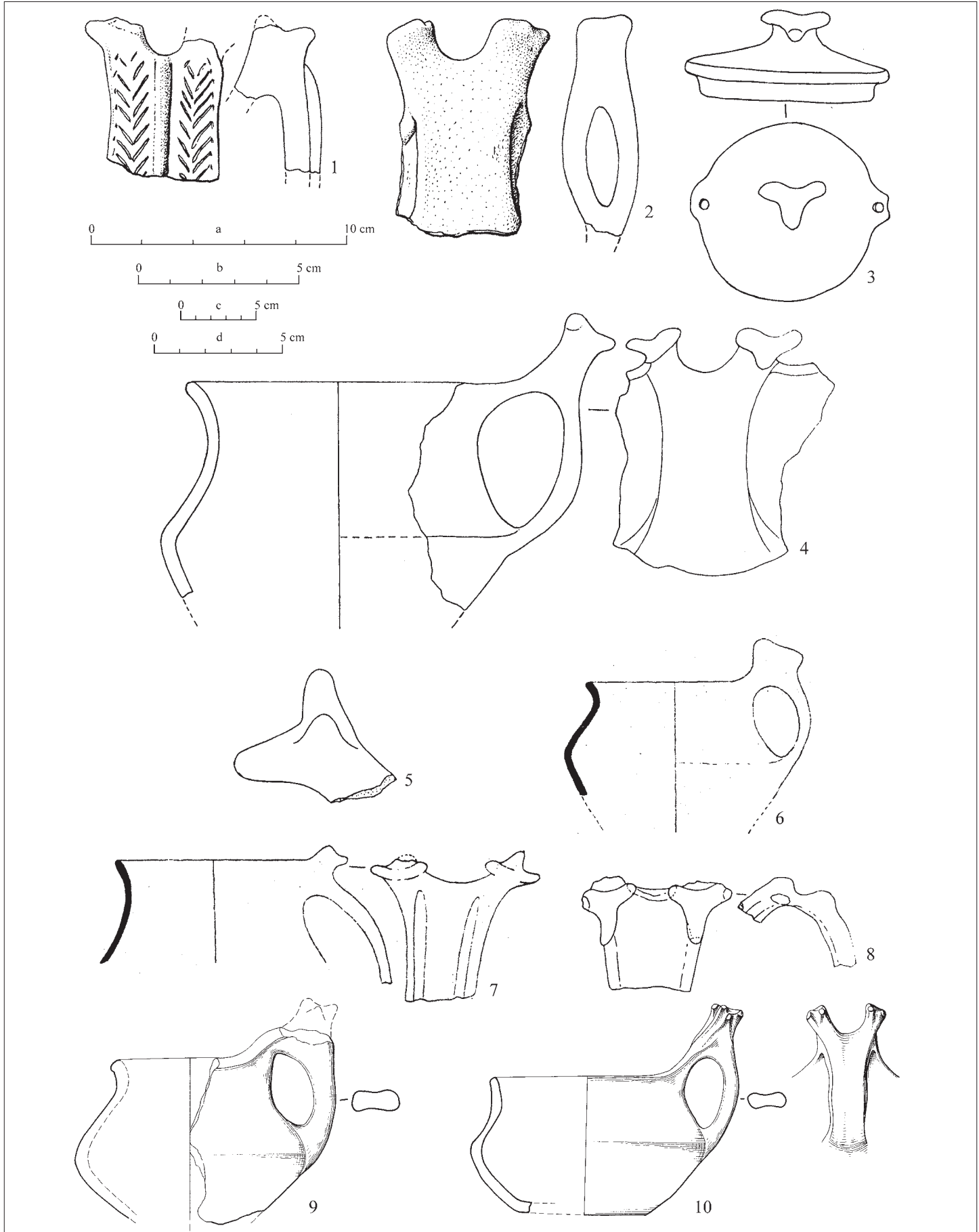


Fig. 5. Pottery with zoomorphic appliques on the top of the handles (Ha D-LT B). 1, 2. Detva, Kalamárka; 3-7. Kežmarok, Jeruzalemburg; 8. Jánovce-Machalovce, Hradisko; 9, 10. Hrabušice, Zelená hora (1, 2 after Šalkovský 2002, fig. 4; 3-8 after Miroššayová 1984, fig. 1; Miroššayová 1992, fig. 3; 9, 10. drawings courtesy of Michal Slivka). Scale: a. 1, 2, 10; b. 3-5, 8; c. 6, 7; d. 9.

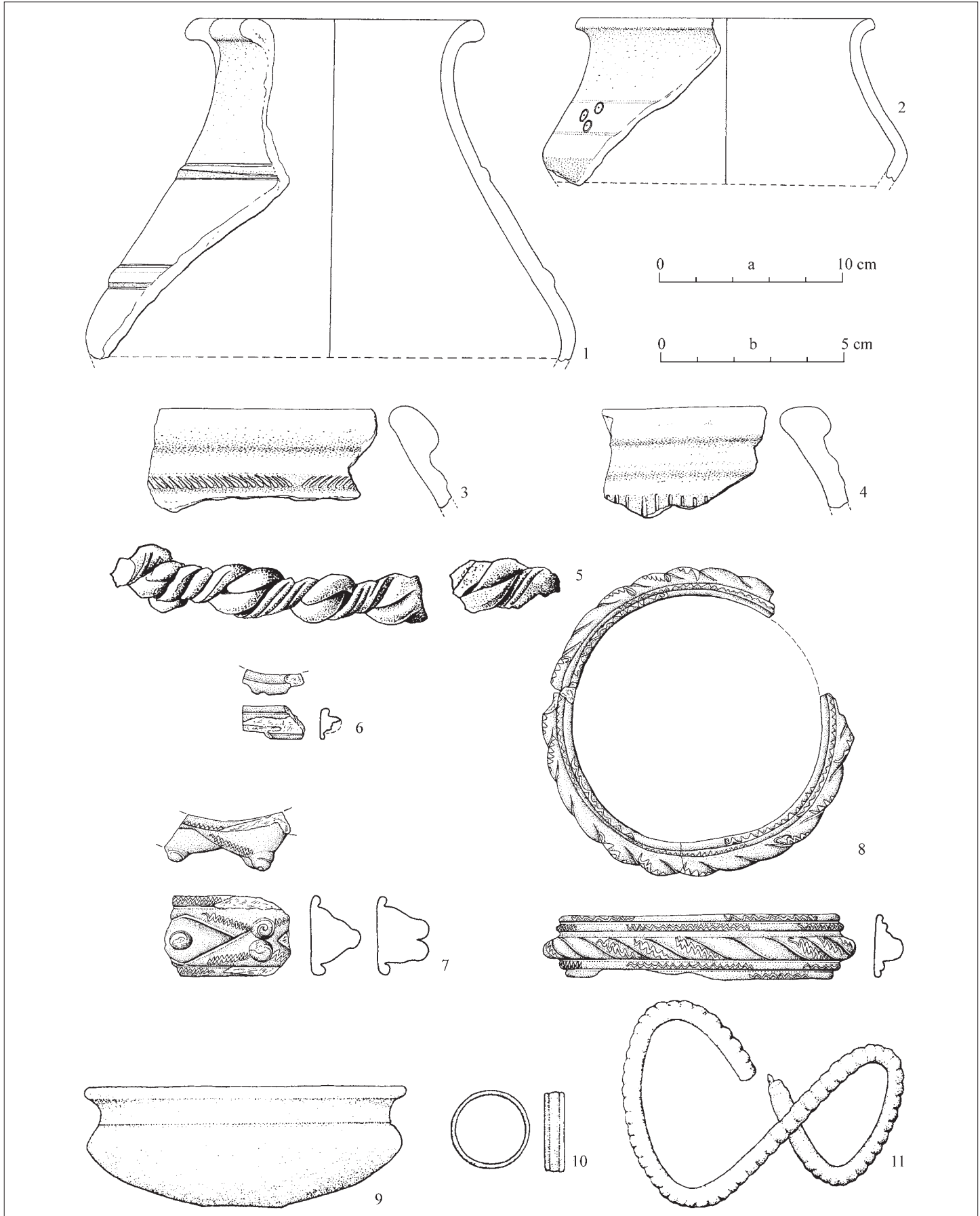


Fig. 6. Pottery and related artefacts of La Tène character from central and eastern Slovakia. 1-8. Detva, Kalamárka; 9-11. Batizovce (1-8 after Šalkovský 2002, fig. 5, 6, 18; Pieta 2008, fig. 11; Březinová 2018, pl. XII, XXII, XXIV; 9-11 after Pieta 2000a, fig. 14). 1-4, 9. Pottery; 5. Iron; 6-8. Glass; 10, 11. Bronze. Scale: a. 1-4; b. 5-11.

The remaining recently obtained items are represented mostly by finds from the Turiec region (Mošovce, Blatnica). Apart from a fibula with a stylised bird head (fig. 7, n°10) from LT A-LT B1, we encounter iron brooches with a frame-arched, arched and roof-arched bow and knob on the foot with parallels to Bujna's types EF-A2-Aa (LT B1c-LT B2a; fig. 7, n°18), EF-C5 or C7 (LT B2a-LT B2b; fig. 7, n°14), and EF-C3-B or C4-B (LT B1c-LT B2a; fig. 7, n°17; Bujna 2003, p. 63, 69, 70, 71, fig. 31, 41, 44, 45, 64). From the Upper Hron river valley region, a bronze fibula from Moštenica with a frame-arched bow is unpublished, it has parallels with Bujna's type BF-A3-B (LT B2a; Bujna 2003, p. 48, fig. 5, 62), and an iron fibula with a frame-arched bow from the Brusno site (Martin Kvietok, personal communication) with parallels to Bujna's type EF-C5 or C8 (LT B2a-LT B2b; Bujna 2003, p. 70, 71, fig. 44, 46, 64).

Among belt accessories we can mention the already published examples of belt-hooks with a rectangular plate dated from the later LT A till the beginning of LT B2 (fig. 7, n°19; Pieta *et al.*, in preparation, with references), as well as the so far unpublished belt hook from Brusno (M. Kvietok, personal communication), resembling best Bujna's type Gs-A3-F, and thus datable to LT B1/B2-LT B2a (Bujna 2011, p. 24, fig. 20).

Artefacts from the horizon LT B2(b)-LT C1

Typical local pottery used to be dated to this horizon (representing the typical material culture of the 'Pre-Púchov Stage'; cf. Introduction, chapters 1.1. and 1.2. Pottery), as there was originally no evidence of earlier La Tène material from the studied territory. This kind of pottery itself cannot be unambiguously dated, however, without being accompanied by chronologically sensitive artefacts. Moreover, as laid out above, pottery assemblages from Liptovská Sielnica-Liptovská Mara contained earlier La Tène elements (cf. chapter 1.1.).

Apart from pottery, this horizon is represented by several types of fibulae and other categories of dress accessories (glass jewellery, belt items) and coins from other sites. Importantly, at some of these sites, most finds should be dated to LT C1 at the earliest, yet to its latest phases (from LT C1b onwards).

The earliest artefact of this horizon is the large fibula of a transitional (Early/Middle La Tène) period from Mošovce of Bujna's type EF-B2-A, dated to LT B2c-LT B2/C1 (fig. 8, n°8; Bujna 2003, p. 65, fig. 37, 64).

Other brooches belong already to the LT C1 stage, rather to its later phases, and are all of the Middle La Tène period. Larger collections of brooches of these types come especially from the sites in Turiec, the Middle Váh river valley, Middle and Upper Nitra river valley, and Upper Hron river valley. Typical types of this period are fibulae with a sphere on the foot, joined to the bow by a clamp, ranked among Bujna's type EF-H/L with their earliest appearance in LT B2/C1 and occurring throughout the LT C1 stage (fig. 8, n°7; Bujna 2003, p. 73-76, fig. 65; cf. also type Manching 15 dated by Gebhard broadly to the earlier phase of LT C; Gebhard 1991, p. 17, 80, fig. 5); and also fibulae with two spheres on the foot joined to the low arched or frame bow (Turiec: Sklabinský Podzámok – Turčianska Štiavnička; Middle

Váh/Nitra river valleys: Soblahov, Slatina nad Bebravou; Upper Hron river valley: Poniky-Ponická Huta; fig. 8, n°3-5; Benediková, Pieta 2018, pl. IV, n°3; Pieta 2008, fig. 4, n°3, 5; 13, n°2; 2018, fig. 6, n°4-7) that belong to the items of the younger LT C1(c) stage (Bujna's type EF-K; Bujna 2003, p. 92, fig. 65).

Fibulae of Middle La Tène construction with 4- to 6-spiral coils, external chord, and low frame asymmetric bow sharply bent above the coil, similar to Manching type 19b (Gebhard 1991, fig. 6), are known again from the Turiec region and from the south of central Slovakia (fig. 8, n°1, 2, 6; Pieta 2008, fig. 12, n°8; 2014, fig. 6, n°14, 17, n°1, 2, 6). Type 19 of the Manching fibulae is dated to LT C and LT D stages (Gebhard 1991, p. 82). Probable prototypes of this type – brooches with two spheres on the foot and also frame asymmetric bow (Bujna's types EF-K-B and C) – are dated to LT C1c (Bujna 2003, p. 78, 79, fig. 61, 65). From the point of view of their morphology, the fibulae with a frame bow, but with a more decorative clamp, or with a sphere instead of a clamp and a decorative round enamel plate (fig. 8, n°10, 11) which come from the studied territory are also close to Bujna's types EF-K-B and C and to their bronze variants (BF-J-B), dated similarly to LT C1c (Bujna 2003, p. 61, fig. 29, 63). A fibula from Kvašov (fig. 8, n°11) is also close to the type Manching 13a and can be dated to LT B2-LT C1/C2 (Gebhard 1991, p. 80, 81, pl. 16, n°278, 279).

Belt accessories from this horizon are documented from Poniky-Ponická Huta, Slatina nad Bebravou, Soblahov, and other sites (fig. 9; cf. Pieta 2000a; 2008; 2018; Bujna 2011). From Poniky there is an iron late lance-type belt hook of the type Gs-E3 of Bujna, dated to LT C? (fig. 9, n°2; Pieta 2008, fig. 13, n°10; Bujna 2011, p. 29, 30, fig. 22). Another belt hook from this site belongs to the late types of a one-part belt hook, also dated to LT C (?) (fig. 9, n°3; Pieta 2008, fig. 13, n°9; Bujna 2011, p. 27, fig. 21). From the same site comes a segment of an iron chain belt made of interlaced links (fig. 9, n°1; Bujna's type Gk-F), dated to LT B2c (Pieta 2008, fig. 13, n°6; Bujna 2011, p. 95, fig. 39).

The hillfort on the hill of Udrina (and its broader hinterland) in Slatina nad Bebravou yielded several items of belt accessories. An iron belt hook can probably be classified as a simple late lance-type, similar to Bujna's type Gs-E3, and as such is datable to LT C? (fig. 9, n°15; Pieta 2008, fig. 4, n°19; Bujna 2011, p. 29, 30, fig. 22). The chain belts are represented by the types made of double twisted eight-shaped iron links (fig. 9, n°8, 14; Bujna's type Gk-C2), dated to LT C1 (Pieta 2008, fig. 4, n°20, 21; 2018, fig. 14; Bujna 2011, p. 80, 81, fig. 34); furthermore, the types made of twisted links (fig. 9, n°9, 12; Bujna's type Gk-G), dated to LT C1 (Pieta 2008, fig. 4, n°14, 15; Bujna 2011, p. 97, fig. 40); as well as types made of profiled bar links (fig. 9, n°10; Bujna's type Gk-K-b), dated to LT C1c (-LT C2?; Pieta 2008, fig. 4, n°7; Bujna 2011, p. 100, 111, fig. 44, 60), and those made of board links (fig. 9, n°11; Bujna's type Gk-N-Aa), dated to LT C1b-c (Pieta 2008, fig. 4, n°11; Bujna 2011, p. 112-120, fig. 47, 61). Other bronze chain belts and their fragments have been published recently from this site and the surroundings are made of profiled bar links, namely the belt of Bujna's type Gk-J-AXa, dated to LT C1b (fig. 9, n°16, 19; Bujna 2011, fig. 42, 60; Pieta 2018, p. 104, fig. 13, n°1, 2 centre top), and a bronze chain belt of

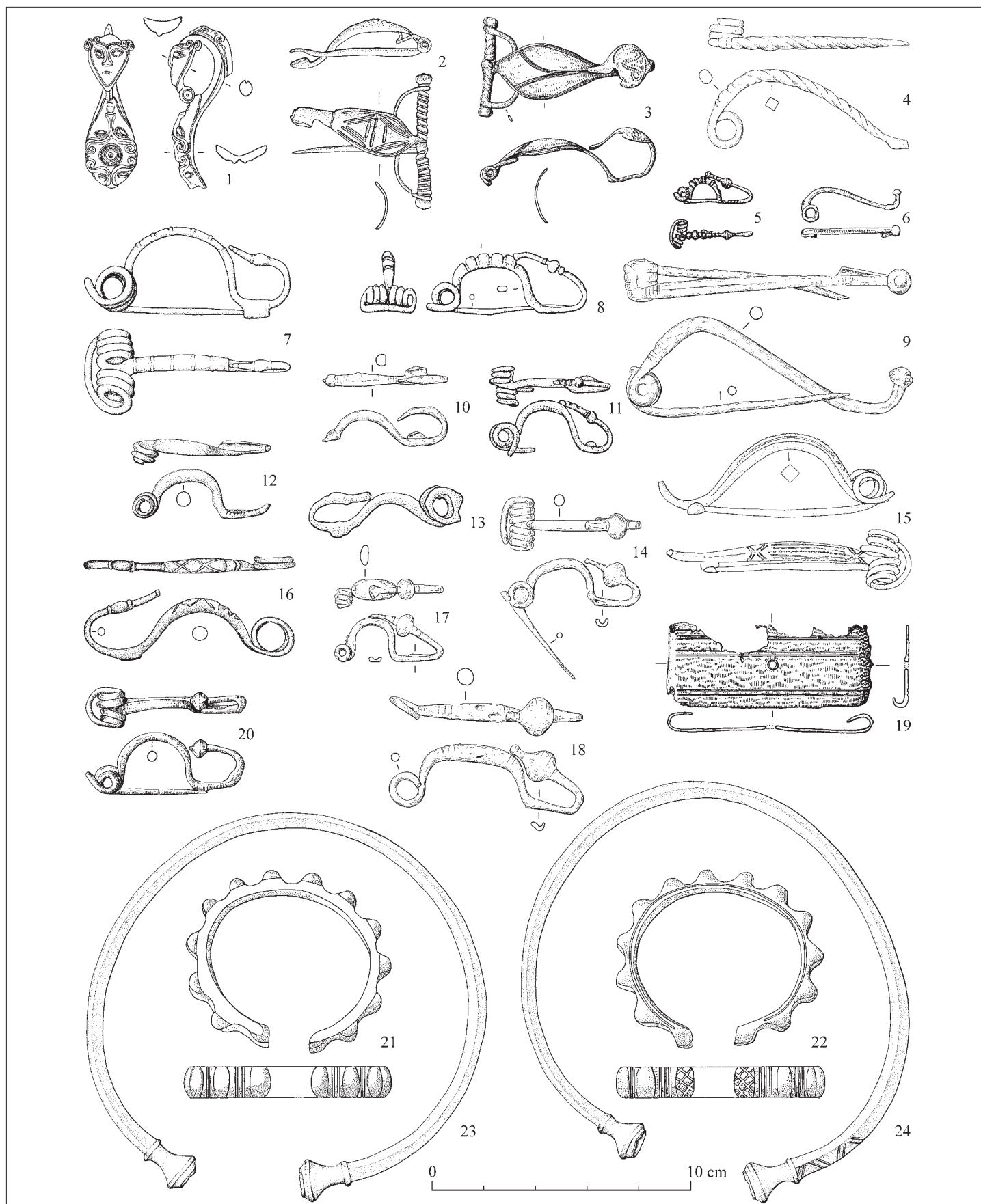


Fig. 7. Early La Tène Period (LT A-B2/a/) artefacts from Slovakian Western Carpathians. 1. Slovenské Pravno; 2. Podskalje, Veľké skaly/Roháč; 3. Blatnica, Rovná/Plešovica; 4, 9, 14, 17, 18. Mošovce, Háj; 5. Nimnica; 6. Vyšný Kubín, Tupá skala; 7. Liptov; 8. Čachtice; 10. Blatnica, Rovná; 11. Považská Bystrica; 12, 13. Považská Bystrica-Považská Teplá, Malý Manín; 15. Vítkovce, Tureň; 16. Tisovec, Hradová; 19. Sklabinský Podzámok – Turčianska Štiavnička, Katova skala; 20. Žilina-Vranie, Rochovica; 21-24. Pružina, Michalová (1, 6-8, 11 after Pieta 2000a, fig. 14, n°1, 3, 4, 14, 15; 3, 19 after Pieta 2008, fig. 2, n°1, 7; 5 after Moravčík 1986, p. 162; Pieta 2000a, fig. 14, n°16; 12, 13, 20-24 after Pieta 2012b, fig. 4; 7, n°3, 7, 10; 15 after Miroššayová, Javorský 1986, p. 664; 16 after Bartík, Čambal 2014, pl. I, n°1a). 1-3, 5-8, 11, 12, 15, 16, 21-24. Bronze; the rest – iron.

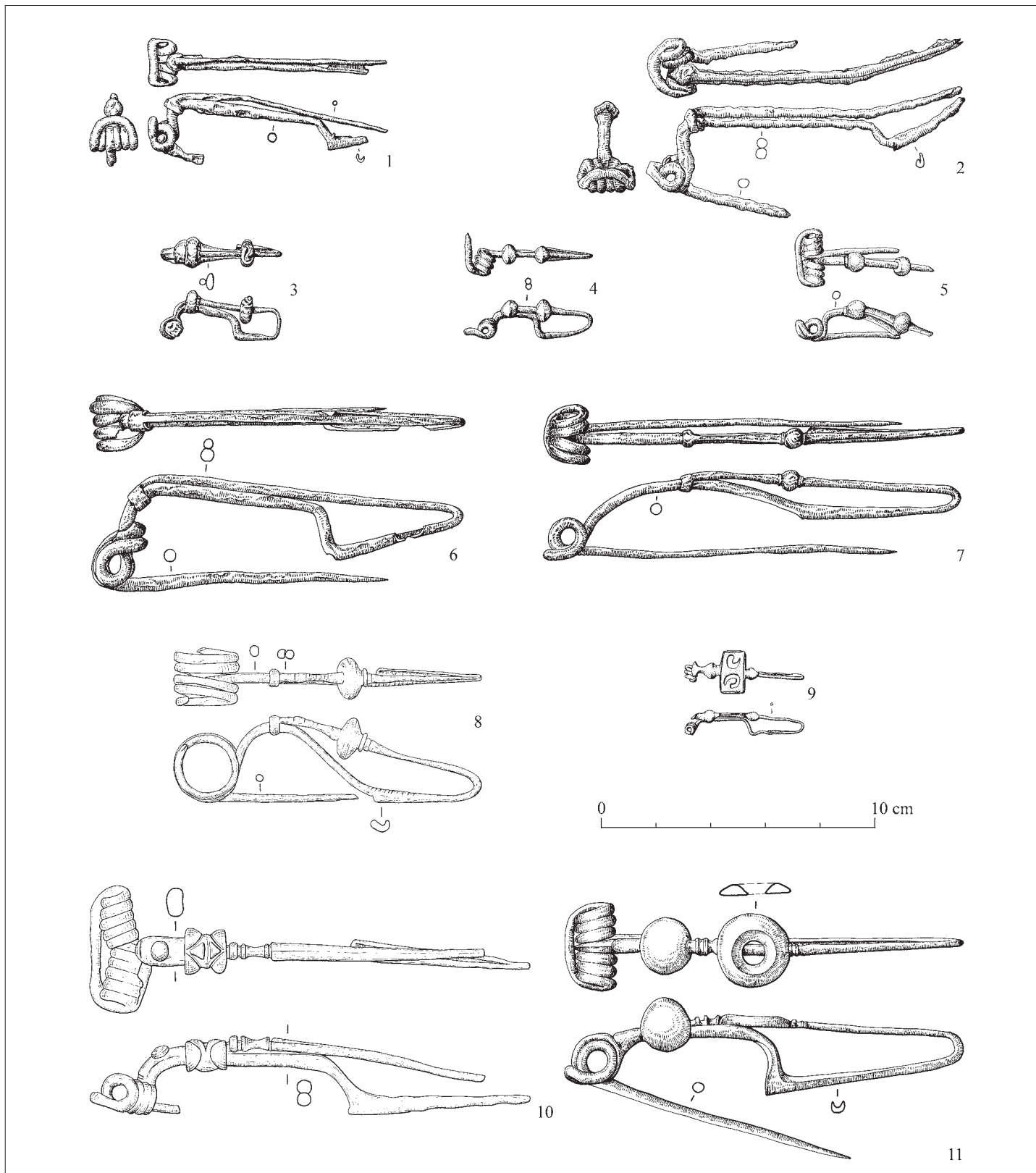


Fig. 8. Early to Middle La Tène Period (LT B2/b/-C1/C2) fibulae from Slovakian Western Carpathians. 1, 2. Blatnica, Plešovica; 3, 4. Slatina nad Bebravou, Udrina; 5. Sklabinský Podzámok – Turčianska Štiavnička, Katova skala; 6, 7. Slovenské Pravno, Sokolia skala; 8. Mošovce, Háj; 9. Podhradie, Mníchova roľa; 10. Ondrašová; 11. Kvašov, Ostrá hora (1, 2, 5-7 – after Pieta 2014, fig. 17; 3, 4 after Pieta 2008, fig. 4, n°1, 3; 9-11 after Pieta 2017, fig. 1, n°5, 6; 3, n°5). 9. Bronze; the rest – iron.

a type unknown up-to-now from Slovakia made of profiled bar links with a typologically identical strap end; based on stylistic grounds they most likely date to LT C as well (fig. 9, n°17, 20, 22; Pieta 2018, fig. 13 below).²

An iron belt-hook from Soblahov marks the end of the studied time span in the Slovakian Western Carpathians, *i.e.* LT C1/C2 stage (Benediková, Pieta 2018, p. 44, pl. IV, n°6).

Besides the hillfort of Udrina, another remarkable site was recently recognized in the municipal area of Slatina nad Bebravou – namely the offering pyre in the location Pod Smradľavým vrchom in the foothill of Udrina. The site is dated to the later LT C1 and it yielded evidence of offering rituals during which pottery, bones, and metal artefacts were deformed and burnt (Pieta 2018, p. 101-103). Among the metal items, dress accessories, weaponry, and bronze relief fragments were identified (Pieta 2018, p. 101, 102). The relief fragments come from the bronze shoulder straps of a cuirass, the production of which can be stylistically dated to the second half of the 4th century BC (Thomas 2018, p. 135). The Celts had the occasion to obtain the artefacts as war booty when plundering one of the Greek sanctuaries, such as the one in Delphi in 279 BC, and to sacrifice them subsequently in Slatina nad Bebravou in the second half of the 3rd century BC (Thomas 2018, p. 135).

Besides the fibulae with two spheres on the bow (Pieta 2018, p. 96-99, fig. 6, n°4-7), already analysed above, an example of fibulae with a square plate with an enamel inlay was found at the site Pod Smradľavým vrchom (Pieta 2018, p. 96, 99, fig. 7, n°26, 29). This brooch type is dated to LT C1b-LT C2, with the possibility of their longer use (till LT D1) in some regions (Dizdar 2014, p. 107). Several examples of such fibulae are known from the studied area, specifically from Podhradie (fig. 8, n°9), Blatnica, the site Rovná, Beluša-Belušské Slatiny (Pieta 2008, fig. F2, n°2, 3; 2014, fig. 19, n°3), and Spišský Hrhov (Fecko, Soják 2012, 251; Soják, s. d., fig. on p. 25).

Among belt components occurring in this sacrificial site there are parts of iron chain belts made of simple tiny chains (Bujna's type Gk-E), dated to LT B2/LT C1-LT D1 (fig. 9, n°4; Pieta 2018, fig. 6, n°8-10, 12; Bujna 2011, p. 87-94), a chain belt made of double twisted eight-shaped links dated to LT C1 (fig. 9, n°7; Bujna's type Gk-C2; *cf.* the same type from Udrina in Slatina nad Bebravou above; Pieta 2018, fig. 8, n°22). Belt hooks from this site are represented by a simple iron leaf-shaped belt hook (fig. 9, n°6; Bujna's type Gs-L; Pieta 2018, fig. 8, n°20), dated to LT B2/C1-LT C1/C2 (Bujna 2011, fig. 53), but also by a chronologically later ring belt hook with a hook end (fig. 9, n°5; Pieta 2018, fig. 8, n°15), with analogies in Manching where identical variants with a wide tongue-shaped middle segment are dated to LT C2, while later variants with a triangular middle segment date to LT C/LT D-LT D1a (Sievers 2010, p. 244, pl. 37, n°449-453 for earlier and pl. 37, n°454-459 for later variants).

Metal ring jewellery is not as frequent as other types of metal items. A conspicuous artefact is a ring with plastic decoration from Poniky (fig. 10, n°1; Pieta 2008, fig. 13, n°1) that finds analogies *e.g.* in grave 2 in Brno-Bohunice from LT B2 (Čižmářová 2011, p. 22, 75, pl. 2, n°11), as well as at other sites in Moravia (Hrušky 1; Rousínov, grave 2; Čižmářová 2013, fig. 19, n°7, 50, n°3).

A pair of rings come from Nimnica (Middle Váh valley region ; fig. 10, n°2). The larger one is a pseudo filigree ring decorated on the perimeter with three regularly distributed decorative elements (Pieta 2008, fig. F20; Čižmářová 2012, p. 203, 204, pl. VII, n°2, VIII, n°3). This type of ring from known contexts in Moravia is dated to LT B2/C1 and to LT C1 (Čižmářová 2012, p. 204). They are less frequent in Moravia and in the surrounding territories than in Western Europe (Čižmářová 2012, p. 204). The best parallel to the smaller of the rings from Nimnica can be found in a ring made of 'à jour' filigree known from grave 1/1934 in the Moravian site of Šlapanice (Čižmářová 2012, p. 205, fig. VII, n°3). This ring from Moravia does not have further reliable analogies and was dated to LT B2/C1 according to the accompanying grave good (Čižmářová 2012, p. 205). The find circumstances of the rings from Nimnica are not known, though they might allegedly have come from a hoard.

From Liptovská Sielnica-Liptovská Mara, neckrings and ribbed armrings are known from an assemblage that was one of the basic sources for the definition of the 'Pre-Púchov Stage' (Pieta 1982, p. 54, pl. LV, n°11, 12, 17).

Besides the offering site in Slatina nad Bebravou another admittedly ritual find assemblage can be named from an unknown location in the municipal area of Detva. The weapon hoard contained four swords (or their fragments), a lance head, and a part of a sword chain belt (fig. 11; Sankot 2005, p. 135-144). The hoard is dated to the end of LT B2-LT B2/C1 (Sankot 2005, p. 135-144). Detva was considered the instance of the northernmost occurrence of an Early/beginning of the Middle La Tène Period sword in Slovakia; however, another sword with an iron sword chain belt from LT B2/LT C1 (Bujna's type Gk-C1; Bujna 2011, p. 76) stage has been recently obtained from Blatnica, Tisová site (Pieta 2014, p. 152, fig. 18, n°4-6). Another deposition – of iron tools – can be mentioned from Poniky-Ponická Huta with an iron hewing knife of the Dürrnberg type (fig. 12; Pieta 2008, p. 37), dated to LT B-LT C stages (Osterhaus 1981, p. 13, 14, fig. 2, n°8).

A group of artefacts on its own are glass items and coins. The beginnings of their massive occurrence in the mountain regions date to LT C. Some Middle La Tène glass and/or coin finds, can be dated only generally to LT C without the possibility of distinguishing between LT C1 and LT C2 stages. When these are the only objects of this date from a particular site it is rather impossible to establish whether the site originated only during the fully laténised period of Púchov culture (from LT C2 onwards), or whether it represents the preceding stage of La Tène culture formation in the Slovakian Western Carpathians. However, where also other artefacts dated to LT C1 are available, the glass objects and/or coins can underline the beginnings of the occupation of a particular site and/or micro-region during this time.

² A distant analogy, although longer and more conspicuously profiled, could be named from Stradonice, where such profiled bar links have been conditionally classified as a west-Swiss type of belt links (Pič 1903, pl. XXI, n°20; Reitinger 1966, p. 323, fig. 9, n°7-10).

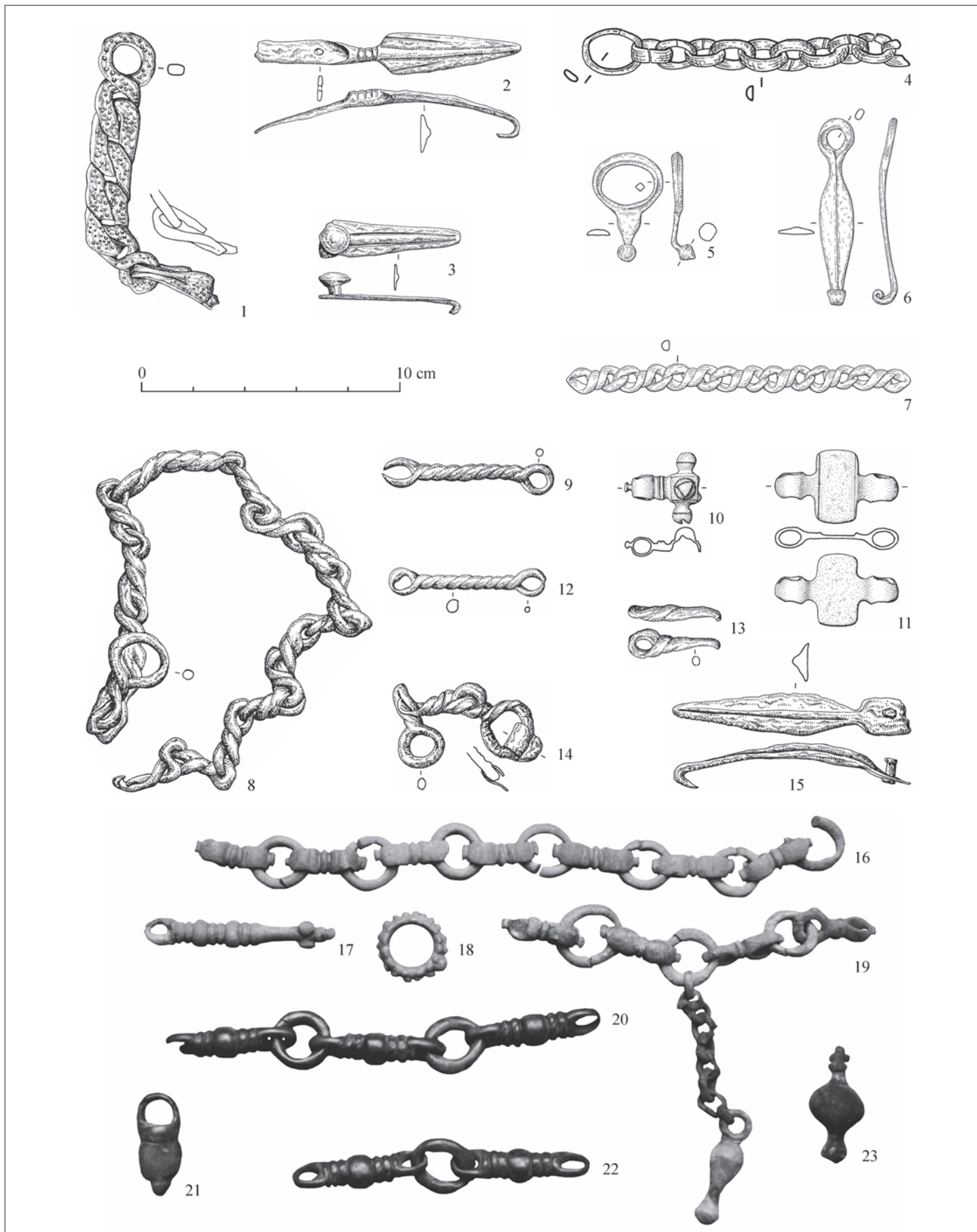


Fig. 9. Early and Middle La Tène belt accessories from Slovakian Western Carpathians. 1-3. Poniky-Ponická Huta, Baby; 4-7. Slatina nad Bebravou, Pod Smradľavým vrchom; 8-23. Slatina nad Bebravou, Udrina (1-3 after Pieta 2008, fig. 13; 4-7 after Pieta 2018, fig. 6; 8; 8-23 after Pieta 2008, fig. 4; 2018, fig. 13). 1-9, 12-15. Iron; 10, 11, 16-18, 20-23. Bronze; 19. Bronze and iron. 16-23. Out of scale.

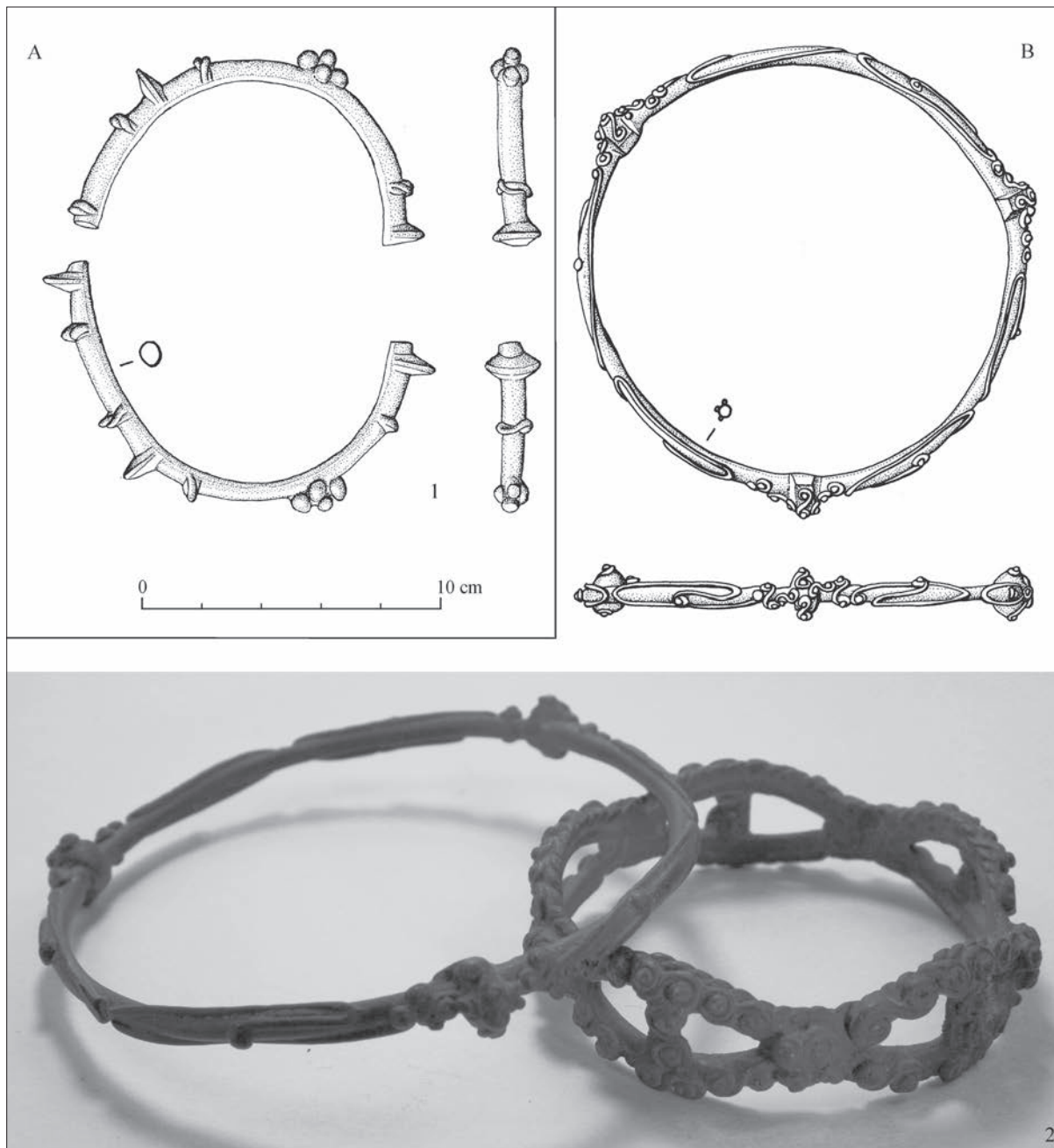


Fig. 10. Early and Middle La Tène ring jewellery from Slovakian Western Carpathians.
 A. Poniky-Ponická Huta, Baby (after Pieta 2008, fig. 13, n°1);
 B. Nimnica, Holíč (after Pieta 2008, fig. 20; drawing of larger of the rings added). Scale valid for both drawings.

Among the sites where early types of glass jewellery also occur, dated from LT C1 stage onwards, the Kalamárka site in Detva can be named again. The fragments of the glass rings from this location belong to three types (according to Venclová's classification). Type 6b/2 (fig. 6, n°6) occurs from LT C1a in eastern Austria, type 6a together with type 8d (fig. 6, n°8) follows from LT C1b (Karwowski 2004, p. 77; Březinová 2018, p. 26-28). Both types 6b and 8d survived till LT C2 (Karwowski 2004, p. 73, fig. 25; Březinová 2018, p. 28), type 6b even till LT D (according to Venclová 1990, p. 122). Type 15 (fig. 6, n°7) belongs to LT C1-LT C2 (Venclová 1990, p. 130, with one named exception from the Late La Tène Period; cf. Březinová 2002, p. 25, 26; 2018, p. 30). The glass finds have been published from other

central and northern Slovakian sites: Jánovce-Machalovce, Jasenovo, Kežmarok, Liptovská Sielnica-Liptovská Mara, Púchov, Selec, Tisovec, Trebostovo, Žehra (Březinová 2017, p. 45-61; 2018; both with references).

Coins play an important role among artefact classes. In recent times the number of known pieces has grown considerably compared to the past (Kolníková 2003, p. 223-246). The size and typological composition of 3rd-2nd century BC coin assemblages differ in many regards from one part of the studied territory to another. Some stray gold shell staters with their origin in the area of the so-called Boii coinage have been documented in northern Slovakia, particularly in the Spiš region, at this time, as have also silver pieces from the south-east (types Thuglieş-Mireşu Mare,

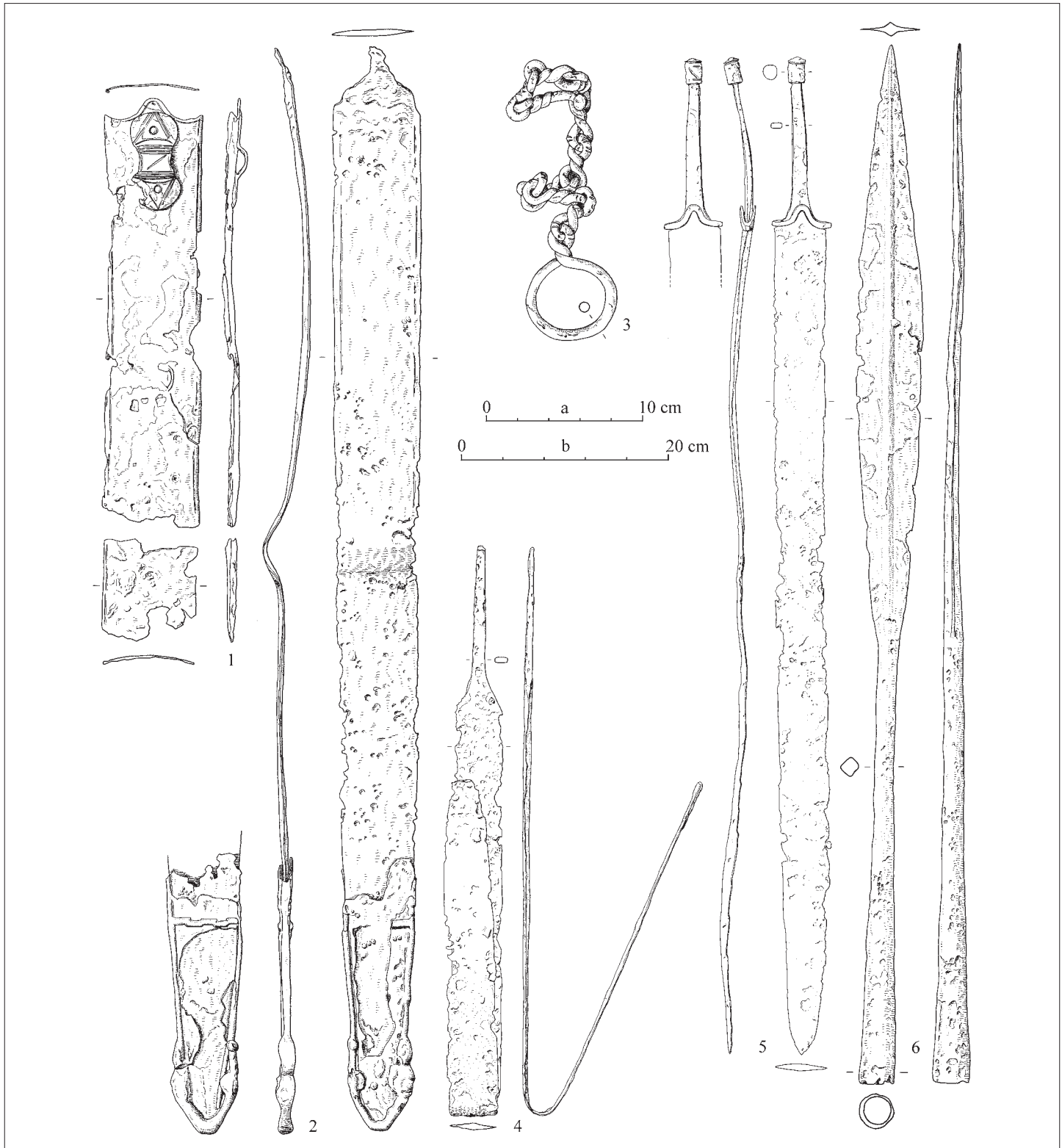


Fig. 11. Detva, hoard of iron weapons. 1. Sword, inv. no. 3113; 2. Sword, inv. no. 3113; 3. Chain belt fragment, inv. no. 3113; 4. Sword, inv. no. 3108; 5. Sword, inv. no. 3107; 6. Lance head, inv. no. 3110. Scale: a.1-3, 6; b. 4, 5.

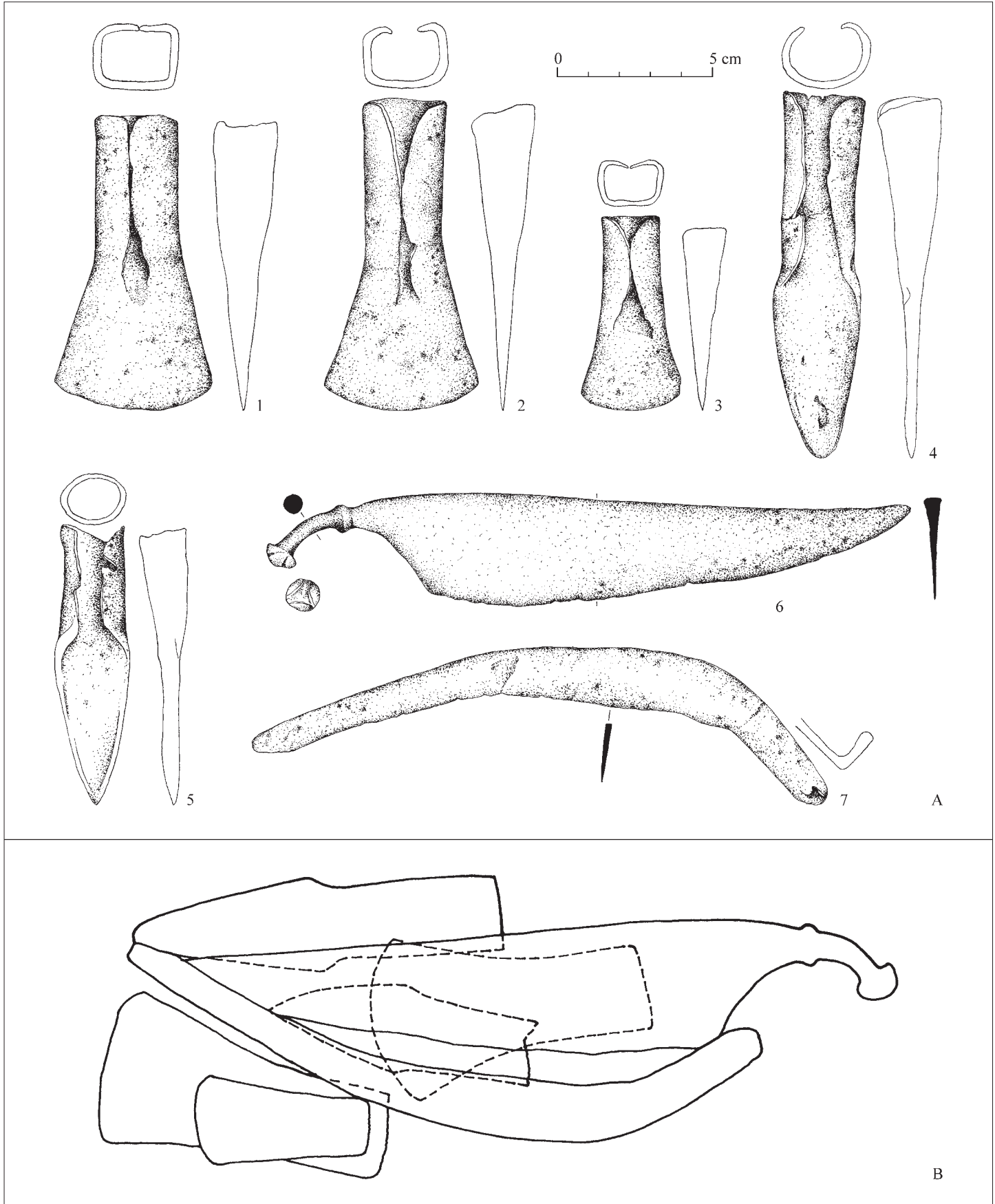


Fig. 12. Poniky-Ponická Huta, Baby, hoard of iron tools. A. Hoard found in 2006. B. Finding situation of the deposition (both after Pieta 2008, fig. 99).

Huši Vovriešti or audoleon imitations; Soják 2016, p. 16). In the southern regions of the studied area with strong geographical and cultural relations to the Middle Danubian area and Moravia numerous Boii coins, as well as those from the Pannonian zone can be found. In this regard the hillfort of Udrina near Slatina nad Bebravou proved to be an important centre. It is likely that silver tetradrachms and oboli characteristic of this region, similar to the Pannonian pieces of the Velem type though with specific iconographic and mass characteristics, were minted here.

1.3. Settlement structure of the Early and Middle La Tène Period in the Slovakian Western Carpathians

A typical settlement structure of later La Tène stages in the Slovakian Western Carpathians took its shape during the Early and at the beginning of Middle La Tène Period.

The creation of new micro-regional settlement structures during LT B-LT C1 is manifested by a series of sites, *e.g.*:

- the settlement area of Liptovská Sielnica-Liptovská Mara,³ Liptov region: the hillfort at the site I/Havránok was settled during the late LT B2-LT C/C2, while settlements in its foothills date from (late) LT A/LT B1 onwards; the beginnings of the offering place on Havránok can be positively dated from LT C2 onwards (*e.g.* Pieta 1996);

- the settlement at Kvačany, Chopce site, Liptov region: a settlement from LT B-LT C1; the hillfort on the hill Hrádková was occupied later in LT C2-LT D (*cf.* Pieta 1982, pl. XXV, XXVI; 1997);

- Likavka, Liptov region; hilltop settlement on Likava castle hill, open settlement in its foothill in the location of Predný lán, both dated to LT B-LT C1 in their early phase.

- the settlement in Brusno, Stará Mara site, Upper Hron river valley: a site without a known fortification and/or offering place (Martin Kvietok, personal communication);

- the hillfort at Ostrý vrch in Soblahov, Middle Váh river valley region: without a known open settlement (Benediková, Pieta 2018, p. 44-46);

- Slatina nad Bebravou with a hillfort on the hill Udrina and an offering place in the foothill of Udrina in the location of Pod Smradlavým vrchom dated from late LT C1 onwards (Pieta 2008, p. 23, fig. 4-7; 2018, p. 89-113);

- offering place Seravy in Trenčianske Teplice with later (LT C2 onwards) hillfort Čertova skala (Pieta 2000b, p. 129-153);

- and others.

The establishment of offering places in northern and central Slovakia⁴ likely dates to the end of LT C1 (LT C1b/c; Slatina nad Bebravou, Pod Smradlavým vrchom; Pieta 2018, p. 89-113). Other offering sites were established and used during LT C1b-LT C2 (Trenčianske Teplice, Seravy; *cf.* Pieta 2000b, p.138-149; 2018, 103, 107) and in LT C2-beginning of LT D1 (Liptovská

Sielnica-Liptovská Mara, I/Havránok site; Prosné, Uhliská site; *cf.* Pieta 1982; Pieta, Moravčík 1980, p. 262, 266).

In most of the sites settled at the beginning of the La Tène Period no previous settlement from the Hallstatt Period can be detected. Another remarkable feature of the Iron Age settlement structure is the horizontal stratigraphy evidenced in several micro-regions. Shifts in the use of space can be nicely observed *e.g.* at the conspicuous hill of Mnich near Ružomberok in the Liptov region where Late Bronze Age, Hallstatt Period, and La Tène Period fortifications each have different sizes and are located in different parts of this hill which probably also corresponds to diverse settlement strategies during each of the mentioned time horizons.

2. Discussion and conclusions

2.1. General characteristics of the Early and beginning of the Middle La Tène Period in the Slovakian Western Carpathians

In the Slovakian Western Carpathians, *i.e.* in the mountainous – northern and central – part of present day Slovakia, the sites of the Early and Middle La Tène Period are represented by hilltop and open settlements, offering places, isolated finds, and hoards but not by burial places. The general absence of necropolises is the main trait distinguishing this territory from the area of distribution of the flat La Tène cemeteries that are typical manifestations of this period in southern Slovakia and other parts of Europe.⁵

Contrary to previous knowledge it is nowadays obvious that the beginnings of the La Tène Period and penetration of the La Tène culture to the studied territory was marked by the use of the elements of personal jewellery and dress accessories of a La Tène nature, such as fibulae, belt accessories, and ring jewellery; less conspicuously by pottery (Liptovská Sielnica-Liptovská Mara); in later stages (LT C1) also the first glass jewellery and 'Celtic' coins were in use.

Apart from typical La Tène items, a few examples can be named that evidence the local perception of La Tène fashion, *e.g.* the extra-large fibulae of the Dux type with plastic decoration on the bow from Lazisko and Liptovský Mikuláš-Ploštín in the Liptov region (unpublished; Furman, Brežňanová, in preparation), specific types of Certosa fibulae with a twisted bow from Mošovce (*cf.* above) or ribbed armrings, which are supposedly variants of a local creation known from Liptovská Sielnica-Liptovská Mara that survived down to the Late La Tène Period (Pieta 1982, p. 54, pl. LV, n°11, p. 12, LVI, n°9). The variation in sizes and/or decoration, or combination of various innovative decoration and

³ Pattern of fully developed settlement area in Liptovská Sielnica-Liptovská Mara from the Late La Tène Púchov culture is shown in fig. 13B. Ground-plan of the habitation unit from Liptovská Sielnica-Liptovská Mara VII from LT B2-LT C1 site shows fig. 13A

⁴ In south-western Slovakia an offering site dated to late LT C1-C2 is documented in Nitra (Pieta 1993, p. 41-58).

⁵ The exceptional occurrence of the cemetery/grave/barrow category (funerary sites) in table 1 is associated almost exclusively (apart from the site Batizovce) with Late Hallstatt Period sites, possibly surviving to the beginning of the La Tène Period and are the representatives of local culture, not of the group of flat La Tène cemeteries.

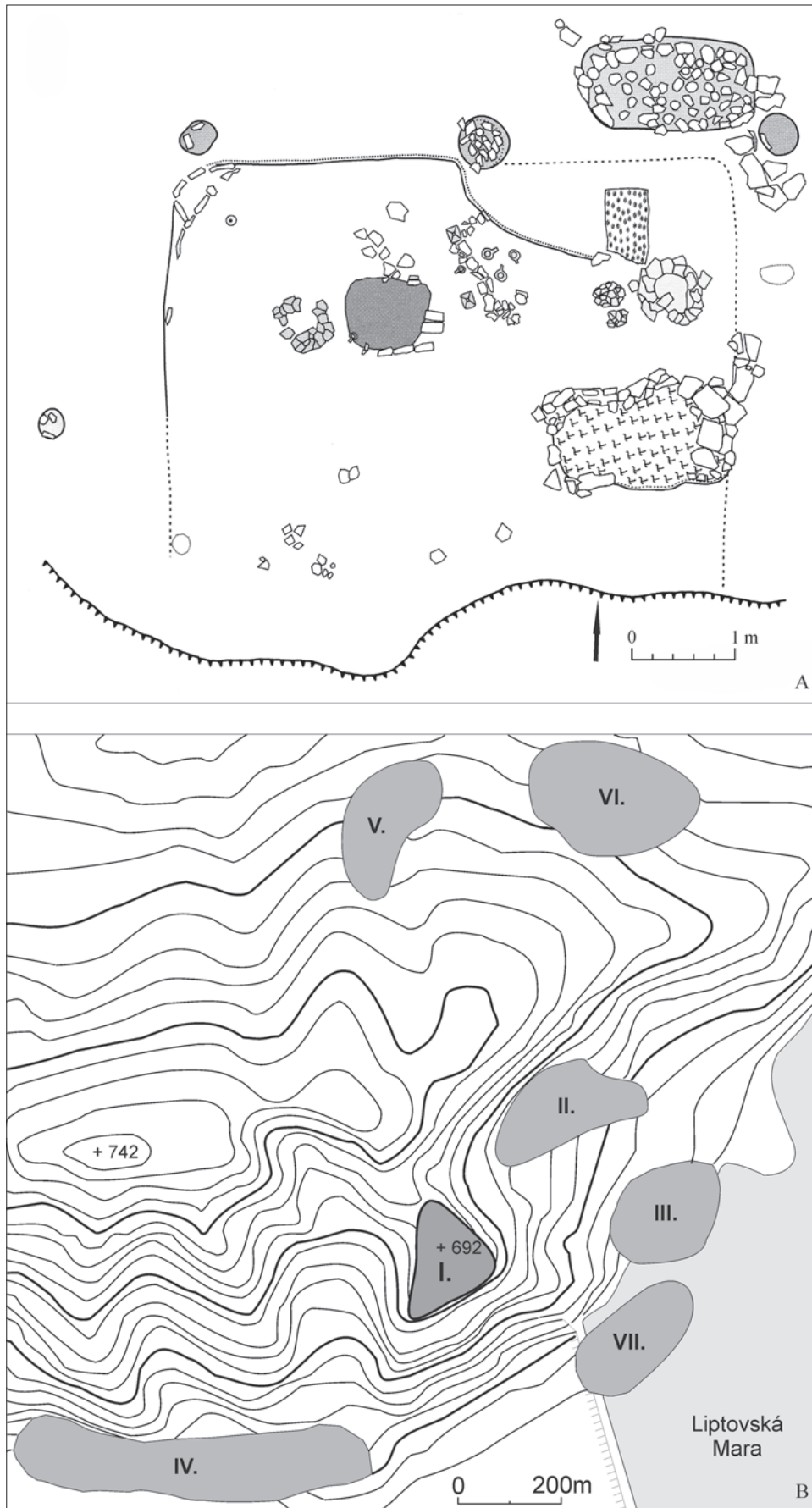


Fig. 13. Liptovská Sielnica-Liptovská Mara II. A. Groundplan of a house from Liptovská Sielnica-Liptovská Mara VII site with preserved interior furnishing from Lt B (after Pieta 2008, fig. 44). B. Settlement area showing the typical settlement structure during the Late Iron Age in Slovakian Western Carpathians with central hillfort (I) and open habitation areas in its hinterland (II-VII; after Pieta 1996, fig. 19, modified).

production techniques of some otherwise culturally typical items can be considered as one of the attributes of 'specific' cultural manifestations, and is evidenced also from other territories in Europe during the Iron Age located outside the La Tène world (Müller 2007, p. 272, 276; Roncador 2014, p. 167, with references).

Pottery of La Tène character of stages LT A-LT C1 occurs not only in the southern part of the mountain region as suggested previously (*e.g.* at sites like Detva, south to Middle Hron river valley), but can be singularly found also in the 'most traditional' and 'secluded' regions in the very north of the country (Liptov and Orava region), associated in ceramic assemblages with locally produced pottery in the morphological and decorative tradition of the local Hallstatt Period. In previous approaches this sort of pottery was named 'Pre-Púchov' and consequently the whole cultural-chronological entity of this time and space was labelled the 'Pre-Púchov Stage'.

It must be pointed out that apart from the material culture of a La Tène nature, the area and period under discussion is characterised also by the presence and persistence of some elements of previous Hallstatt traditions, such as (besides the already mentioned pottery tradition) beaded rings and pottery with zoomorphic appliques on the handles, both dated broadly to Ha D-LT B (*cf.* Benediková 2017, p. 335-381; Pieta *et al.*, in preparation).

The typical settlement structure that characterizes the mountainous regions during LT C2-LT D (La Tène phase of the Púchov culture) was being formed in the studied territory during the Early and the beginning of the Middle La Tène Period, including the foundation of offering sites near the significant hilltop sites in individual settlement chambers and/or micro-regions. On the one hand, these offering sites might have been under the control of nearby hilltop sites that served as local centres. On the other hand, there is no evidence up to now that the sacrificial places were used only by a particular local community and it is more likely they served broader regions as not that many of them have been identified and uncovered yet.

A group of sites (such as Slatina nad Bebravou, Soblahov, Trenčianske Teplice, Poniky-Ponická Huta, and others) characterised by elements whose earliest possible occurrence can be placed in the final phases of LT C1⁶ manifest a new quantity but also a new quality of the occupation and use of a mountain landscape with the beginnings at the end of LT C1.

2.2. Regionality

The LT A-LT C1 period in the Slovakian Western Carpathians can be territorially divided based on the current knowledge of the distribution of local (traditionally 'Pre-Púchov') and La Tène pottery and of metal artefacts produced by local workshops as well as of those of La Tène nature (*fig. 14*). Local types of pottery have been identified at the sites in Liptov (Liptovská Sielnica-Liptovská Mara, Kvačany, etc.), Spiš (Nová Lesná), Upper Hron river valley (Brusno), less convincingly in Orava (Istebné) that can

be considered as the core regions of the Early and Middle La Tène culture of the Slovakian Western Carpathians with strong local traditions. It is there that we can assume the continuous development of material culture (though not territorial continuity of the sites) from the Late Hallstatt to Early La Tène Period (*cf.* below).

In the rest of the territory, pottery is either not known or only typologically La Tène pottery occurs (Detva, Slatina nad Bebravou, and other sites), along with culturally unassignable glass and metal items of a La Tène nature. The area between 'Pre-Púchov' manifestation of the core and the territory of flat La Tène cemeteries can be defined as a buffer zone. The composition and chronology of artefacts known from this zone suggest that it can also be divided into two segments – one (north-western) with the majority of finds dated to the LT A-LT B2a/b horizon, embracing Turiec and the northern part of the Middle Váh river valley region; the other (southern) one in the remaining territory reaching to the northern border of the flat La Tène cemeteries distribution area where most of the finds (including coins and glass artefacts) and sites beginning at the earliest in the late LT C1 can be identified. Especially in the very south of the southern buffer zone the majority of artefacts is represented by culturally unassignable items mostly obtained by surveys or discovered as isolated finds (metal and glass jewellery, dress accessories, sherds, coins). A larger artefact assemblage comes from the hillfort of Zámok in Čebovce (*cf. fig. 1; 14; table 1; Čambal et al. 2017, 433-447*) whose geographical position raises questions about its role in the settlement structure as well as about its cultural affiliation. Nevertheless, pottery that would allow this kind of classification is not available from this site either. It is tempting to interpret such sites as frontier centres located along the border zone with another cultural entity represented by flat La Tène cemeteries (Branislav Kovár, personal communication).

2.3. Chronology

According to the present state of knowledge, the sources available from the studied territory can be divided into several chronological horizons that cannot be considered fully subsequent. Their end/beginning stages partially overlap as the current sources do not allow their precise chronological ranking, which is very much dependent on the sort of materials available (pottery, metal artefacts – both with different dating possibilities). Therefore, the chronological horizons defined below reflect the informative value of the sources available at the individual sites and/or regions and the cultural tradition in which they originated rather than to represent a generally valid chronological scheme for the whole investigated territory.

1. The Late Hallstatt-Early La Tène Period horizon (Ha D-LT A/B1) is characterised in the given territory by the survival of the sites of the preceding Lusatian culture (even a few burial sites of a different character) with the material culture including typical local pottery and personal jewellery. During this horizon, a group of specific refuge sites can be identified, especially distributed in the Liptov region and showing similarities in the material culture with other types of sites in the Liptov, Orava,

⁶ However, most of the artefacts from those sites have a longer period of use (LT C1b-C1/C2 or even till LT C2).

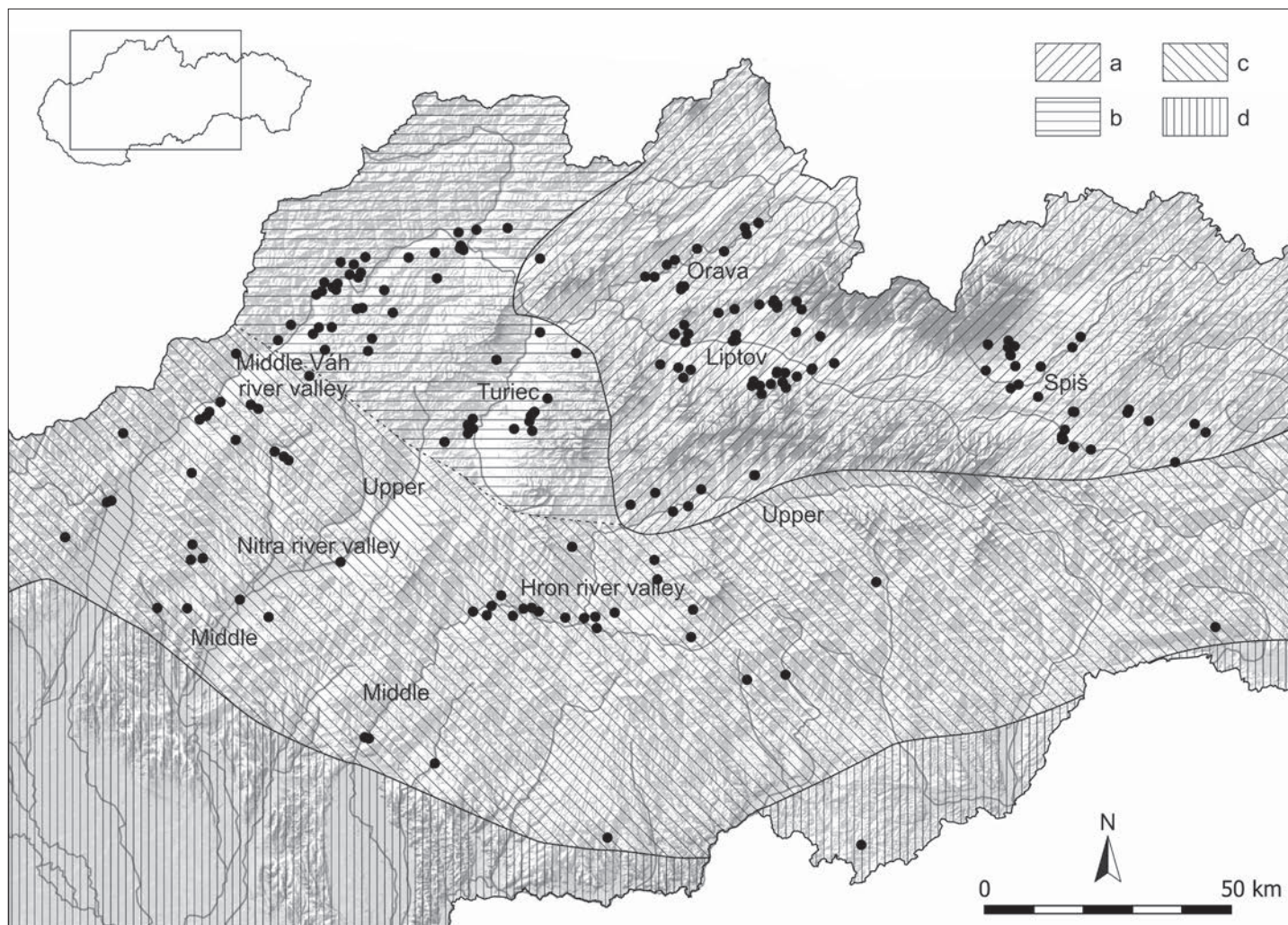


Fig. 14. Late Hallstatt to early Middle La Tène Period (late Ha D-LT C1/C2) settlement of core (a), and of northwestern (b) and southern buffer (c) cultural zones in Slovakian Western Carpathians (cf. fig. 1) north to the distribution area of flat La Tène cemeteries (d); northern border of the flat La Tène cemeteries after Bujna 1982, fig. 1; Haruštiak 2009, map 1; Kovár 2016, pl. 1. Map by L. Benediková, M. Bartík, and P. Červeň.

and Spiš regions (Pieta *et al.*, in preparation). The group of refuge sites cannot be precisely dated (Late Hallstatt or Early La Tène Period?) on the base of the material culture only and the results of a series of radiocarbon datings are expected to bring about new information in near future. It is likely that both – Late Hallstatt and La Tène – fashion, cultural and/or settlement entities existed (for a period of time which cannot be specified) at the beginning of the La Tène Period alongside each other.

2. The LT A-LT B2a/b horizon and the beginnings of the actual La Tène culture in the Slovakian Western Carpathians is represented by the first La Tène elements – metal personal jewellery and dress accessories (fibulae, belt accessories) and by a few recognizable La Tène types of pottery, surprisingly also in the assemblages in the ‘most traditional’ mountain region (Liptov: Liptovská Sielnica-Liptovská Mara). In this period artefacts can only rarely be associated with the excavated features (as is the case *e.g.* in Liptovská Sielnica-Liptovská Mara and Brusno), most of the known sources come from surveys and/or isolated finds, especially in the Middle Váh river valley and Turiec regions. During this horizon, several artefacts have been recognized that

represent the local innovation of ‘classical’ La Tène jewellery (fibulae).

3. The LT B2b-LT C1 horizon is also represented by metal personal jewellery and dress accessories of a La Tène nature (fibulae, belt accessories, ring jewellery), as well as by local pottery and metal items (pins, armrings). This is the period into which the ‘Pre-Púchov Stage’ was originally dated and as such it embraces also the excavated settlement sites especially in Liptov, Spiš, Orava, and the Upper Hron river valley regions.

4. The LT C1-LT C1/C2 horizon is characterised by the occurrence of fibulae and belt accessories dated at the earliest to the final phases of LT C1, the first glass jewellery and coins (both of the latter mostly with vague dating to the LT C stage and therefore not suitable for addressing issues of chronology and cultural development of the studied territory when representing the only finds from a site). Apart from settlements and hilltop settlements (hillforts) also offering pyres can be related to this period. The foundation of new hilltop settlements, hillforts, and offering sites is well documented especially in the southern buffer zone of the

Slovakian Carpathian La Tène culture where also local minting can be assumed (fig. 14).⁷

In the mountain environment of the Western Carpathians as well as in the entire Central Europe, the transition of LT C2/LT D1 was a time of significant changes. The occupation of the Middle and Upper Váh river valley and along its tributaries grew denser and became the core of the Late La Tène Period Púchov culture. In the southern buffer zone described below, important hillforts and settlements, including the centre in Slatina nad Bebravou, came to their end and the occupation of the whole area was strongly reduced. In this period the elements with an origin in South-eastern Europe appeared in the laténised environment of the Western Carpathians that are sometimes related to the horizon of warrior graves of the group Padea-Panagjurski kolonii. It was a time of substantial changes recorded also in historical sources (expansion of Germanic Cimbri and Teutoni), as well as evidenced in the archaeological records of the peripheral territories of the La Tène civilisation (Pieta 2014, p. 164, 165, with references).

Conclusions

Contrary to previous knowledge, the beginnings of the La Tène culture in the Slovakian Western Carpathians could have been convincingly evidenced. The LT A-LT B2a/b horizon corresponds with the first contacts of this region with 'Celtic' immigrants – the bearers of the La Tène culture.

During LT B2 the La Tène settlement in south-western Slovakia and adjacent territories came to its consolidation stage that can be correlated with the second horizon of the Late Iron Age development in the Slovakian Western Carpathians represented also by the foundation and massive development of the settlement area in Liptovská Sielnica-Liptovská Mara (with a proved settlement, although without a proved fortification of the hilltop site on Havránok hill, yet).

The emergence of new sites and new types of sites as well as of new types of artefacts probably at the end of LT C1 is accompanied by the presence of foreign influences, predominantly from

the domain of the La Tène civilisation. Contacts with a non-La Tène environment could be evidenced *e.g.* by the distribution of simple loop iron belt clasps that are found not only in its core distribution area in the Oder-Elbe territory but singularly also in the Western Carpathians (Liptovská Sielnica-Liptovská Mara) and in the southern part of the Carpathian mountain range, where this contact resulted in the emergence and development of the Poienești-Lukaševka culture – a culturally foreign element in that territory (Babeș 1993; 2012, p. 1508-1511).

To move forward it is definitely necessary to study and publish the large material assemblages from Liptovská Sielnica-Liptovská Mara (especially the Early and Middle La Tène layers from the site II, an area excavated in the 1990s), as well as sources from the Nová Lesná site in the Spiš region, and results of recent excavations from Brusno in the Upper Hron valley with their cultural layers, *in situ* remains of building structures, and characteristic materials. Of most value would be, of course, new sources obtained by scientific archaeological excavations of central and northern Slovakian sites.

We are aware that it is always rather difficult to change the given names and paradigms related to them, however, we would like to urge caution when using the term 'Pre-Púchov Stage' that originated and keeps existing as a construction rooted in the 1970s-1990s state of knowledge and cannot be reliably redefined/renamed/denied until new archaeological sources are collected.⁸

The period and territory studied above are not homogenous units from the point of view of their chronology, material content, or geographically. Ascribing this territory in the given time span automatically to the 'Pre-Púchov Stage' only due to its location in the mountains and north of the area with flat La Tène cemeteries does not seem to comprehend fully its cultural-geographical and chronological heterogeneity. The term 'Pre-Púchov' can be used, keeping in mind its status of an artificial auxiliary construct, mainly because given the current state of knowledge

⁷ It is useful to draw attention to the fact that the cultural-historical dynamics of the settlement development of the studied territory in the given period corresponds with other similar specific cultural zones located in the contact zones of the La Tène culture with other European Iron Age populations. It can be illustrated with the example of the territory north of the *Mittelgebirge*, in southern Thuringia and in Silesia ('die östliche Kontaktzone zwischen dem keltischen Kulturraum und dem Norden') where it was possible to follow the continuous development from the Late Hallstatt to the Roman Period. The historical and cultural stages in this area were defined as follows: 1. Late Ha D-early LT B is characterised by the use of Late Hallstatt fibulae and their local imitations, by other single imports, although there is no impact on the local cremation burial ritual (Müller 2007, p. 281). 2. The developed Early-Middle La Tène Period is marked by 'Celtic' influences and changes in technology, personal jewellery, grave equipment, social structure (hilltop settlements), imports that led to local imitations and finally to the creation of local products in all the named areas (Müller 2007, p. 281). 3. The Late LT C-LT D is manifested by an orientation to Celtic relationships, technologies and individual models that is visible in the material culture and in the social organization (Müller 2007, p. 281-282).

⁸ As already stated above, the 'Pre-Púchov Stage' defines the time preceding the fully formed La Tène (and Early Roman Period) culture of the central and northern Slovakian mountains. It is, nevertheless, open to discussion if the term 'Pre-Something' is really suitable for a definition of a rather long period of human history (actually the entire Early and beginning of the Middle La Tène Period, i.e. – LT A-LT C1, i.e. *ca* 270 calendar years), the more so when dealing with a traditional culture of a mountain environment with clear roots in the preceding period, and clearly continuing and developing into the Púchov culture.

The concept of 'pre-stages' can be best discussed in comparison with other areas of Iron Age Europe in which we can observe a continuous development from local roots (manifested, beside others, by the surviving of local pottery forms and/or decoration elements, as well as of local dress accessories), very often in similar geographical settings (hilly and mountain regions), *e.g.* Hunsrück-Eifel culture, Fritzens-Sanzeno culture or the entire territory of the eastern central Alps occupied by the Rhaetians (*cf.* *e.g.* Marzatico 1992, p. 213-246; 2012, p. 570-572; Metzger 1992, p. 15-18; Pauli 1992, 725-740; Cordie 2012, p. 812-814; Roncador 2014, 157-181) as well as the already above mentioned 'eastern contact zone' (Müller 2007, p. 265-282). The conceptualisation and definition of these cultures does not take into account any 'pre-stages' and their development is presented simply as a sequence of developmental stages.

we do not have any more appropriate term to suggest and to use. As such it can be applied for the core mountain regions of the Slovakian Western Carpathians with the occurrence of local 'Pre-Púchov' pottery and other local expressions in the material culture (fig. 14).⁹ In the buffer zones of the studied territory a larger portion of La Tène culture elements can be identified and several attributes of its own historical and cultural development can be observed.

Acknowledgements

The work was funded by the projects APVV-14-0842, VEGA 2/0001/18, and VEGA 1/0399/18.

References

- Babeş M., 1993. *Die Poieneşti-Lukaševka Kultur. Ein Beitrag zur Kulturgeschichte im Raum östlich der Karpaten in den letzten Jahrhunderten vor Christi Geburt*. Bonn, Dr. Rudolf Habelt GmbH, 248 p., 56 pl. (Saarbrücker Beiträge zur Altertumskunde 33).
- Bartík J., Čambal R., 2014. Laténske nálezy z Tisovca-Hradovej, okr. Rimavská Sobota [Latènezeitliche Funde aus Tisovec-Hradová, Bz. Rimavská Sobota]. *Zborník Slovenského národného múzea*, 108, *Archeológia*, 24, 95-101.
- Benediková L., 2014. Nepublikované nálezy z neskorej doby bronzovej a z doby halštatskej/včasnej doby laténskej zo známych stredoslovenských lokalít v kultúrno-chronologickom kontexte [Unpublizierte Funde aus der Spätbronzezeit und Hallstattzeit/ Frühlatènezeit aus bekannten mittelslowakischen Fundorten im kulturell-chronologischen Kontext]. In Čižmářová J., Venclová N., Březinová G. eds. *Moravské křižovatky. Střední Podunají mezi pravěkem a historií (Věnováno památce Miloše Čižmáře)*. Brno, Moravské zemské muzeum, 15-33.
- Benediková L., 2017. Kulturkontakte des slowakischen Teils der Westkarpaten während der Hallstattzeit. In Mirošayová E., Pare C., Stegmann-Rajtár S. eds. *Das nördliche Karpatenbecken in der Hallstattzeit. Wirtschaft, Handel und Kommunikation in früheisenzeitlichen Gesellschaften zwischen Ostalpen und Westpannonien*. *Archaeolingua* 38. Budapest, *Archaeolingua*, 335-381 (*Archaeolingua Series Maior* 38).
- Benediková L., Pieta K., 2018. Lužické hradisko s následným laténským osídlením v Soblahove (okres Trenčín) [Burgwall der Lausitzer Kultur mit latènezeitlicher Nachbesiedlung in Soblahov (Bezirk Trenčín)]. In Benediková L., Horňák M. eds. *Sídla, artefakty a čas... : Zborník štúdií o dobe bronzovej a dobe halštatskej k 75. narodeninám Ladislava Veličačika*. Nitra – Vrútky, Archeologický ústav SAV – Via Magna, s. r. o., 37-54 (*Archaeologica Slovaca Monographiae. Communicationes XXI*).
- Březinová G., 2002. Sklo v dobe laténskej, náramok typu 15. In *História skla 2001*. Nitra, Slovenská archeologická spoločnosť pri SAV – Archeologický ústav SAV, 25-26 (*Informátor SAS*, Supl. 6).
- Březinová G., 2017. Keltské sklo z vybraných výšinných polôh na Slovensku [Celtic glass from selected hilly locations in Slovakia]. In Harmadyová K. ed. *Devín Veroniky Plachej. Zborník k životnému jubileu PhDr. V. Plachej*. Bratislava, Múzeum mesta Bratislavy, 45-61.
- Březinová G., 2018. Šperk zo skla a sapropelitu u Keltov na Slovensku [Glass and sapropelite jewels of the Celts in Slovakia]. Nitra, Archeologický ústav SAV, 154 p. (*Archaeologica Slovaca Monographiae. Studia XXX*).
- Bujna J., 1982. Spiegelung der Sozialstruktur auf latènezeitlichen Gräberfeldern im Karpatenbecken. *Památky archeologické*, 73, 312-431.
- Bujna J., 2003. Spony z keltských hrobov bez výbroje z územia Slovenska (typovo-chronologické triedenie LTb- a C1 spôn) [Fibeln aus keltischen waffenlosen Gräbern aus dem Gebiet der

9 Definition of the 'real' 'Pre-Púchov Stage' in adjacent Moravia as well as in southern Poland on the northern side of the Carpathian range must according to the present state of research remain open as the archaeological sources from LT A-LT C for the Moravian and southern Polish mountain region shall be revised and its cultural characteristics have to be newly described, similarly to what has been done in our paper for the Slovakian mountain territory.

- Slowakei. (Typologisch-chronologische Gliederung der LTB- und C1-Fibeln). *Slovenská archeológia*, 51, 39-108.
- Bujna J., 2005. *Kruhový šperk z laténských ženských hrobov na Slovensku*. Nitra, Filozofická fakulta Univerzity Konštantína Filozofa – Archeologický ústav SAV, 194 p.
- Bujna J., 2011. *Opasky ženského odevu z doby laténskej*. Nitra, Filozofická fakulta Univerzity Konštantína Filozofa, 192 p.
- Cordie R., 2012. Hunsrück-Eifel-Kultur. In Sievers S., Urban O. H., Ramsel P. C. eds. *Lexikon zur keltischen Archäologie. A–K*. Wien, Verlag der Österreichischen Akademie der Wissenschaften, 812-814 (Mitteilungen der Prähistorischen Kommission 73).
- Čambal R., Kovár B., Budaj M., 2017. Neue hallstattzeitliche und latènezeitliche Funde aus Čebovce, Fundlage Zámok (Bez. Veľký Krtíš). In Kysela J., Danielisová A., Militký J. eds. *Stories that made the Iron Age. Studies in Iron Age Archaeology dedicated to Natalie Venclová*. Prague, Archeologický ústav AV ČR – Filozofická fakulta, Univerzita Karlova, 433-447.
- Čižmářová J., 2011. *Keltská pohřebiště na Moravě, okresy Brno-město a Brno-venkov. Keltische Gräberfelder in Mähren, Bezirke Brno-město und Brno-venkov*. Brno, Moravské zemské muzeum, 299 p.
- Čižmářová J., 2012. Filigránový šperk doby laténské na Moravě [Latènezeitlicher Filigranschmuck in Mähren]. In Březinová G., Varsik V. eds. *Archeológia na prahu histórie. K životnému jubileu Karola Pietu*. Nitra, Archeologický ústav SAV, 201-234. (*Archaeologica Slovaca Monographiae. Communicationes*, XIV).
- Čižmářová J., 2013. *Keltská pohřebiště na Moravě, okresy Blansko a Vyškov. Keltische Gräberfelder in Mähren, Bezirke Blansko und Vyškov*. Brno, Moravské zemské muzeum, 321 p.
- Dizdar M., 2014. Bronze Fibulae with Enamel Inlay from Scordiscan Sites. In Berecki S. ed. *Iron Age Crafts and Craftsmen in the Carpathian Basin, Proceedings of the International Colloquium from Târgu Mureș 10-13 October 2013*. Târgu Mureș, Editura MEGA, 97-114 (Bibliotheca Musei Marisiensis. Seria Archaeologica VII).
- Fecko P., Soják M., 2012. Sídliisko púchovskej kultúry v Spišskom Hrhove na Spiši [Settlement of the Púchov culture in Spišský Hrhov, region Spiš]. In Březinová G., Varsik V. eds. *Archeológia na prahu histórie. K životnému jubileu Karola Pietu*. Nitra, Archeologický ústav SAV, 247-262 (*Archaeologica Slovaca Monographiae. Communicationes* XIV).
- Furman M., Brežňanová, G., in preparation. Nový typ laténských spôn z Liptova? [Liptov type fibulas?]. In Čižmář I., Čižmářová H., Humpolová A. eds. *Jantarová stezka v proměnách času. Věnováno PhDr. Janě Čižmářové*. Brno 2020. In preparation
- Gebhard R., 1991. *Die Fibeln aus dem Oppidum von Manching*. Frankfurt am Main – Stuttgart, Franz Steiner Verlag, 224 p., 86 pl. (Die Ausgrabungen in Manching 17).
- Haruštiak J., 2009. Vývoj pohrebného rítu na keltských pohrebiskách z územia Slovenska [Zur Entwicklung des Bestattungsritus auf den keltischen Gräberfeldern aus dem Gebiet der Slowakei]. *Slovenská archeológia*, 57, 117-168.
- Hellebrandt M., 1999. *Celtic Finds from Northern Hungary*. Budapest, Akadémiai Kiadó, 300 p. (Corpus of Celtic Finds in Hungary III).
- Horváth L., 1987. The surroundings of Keszthely. In Horváth L., Kelemen M., Uzsoki A., Vadász E. *Transdanubia 1*. Budapest, Akadémiai Kiadó, 63-178 (Corpus of Celtic Finds in Hungary I).
- Karwowski M., 2004. *Latènezeitlicher Glasringschmuck aus Ostösterreich*. Wien, Verlag der Österreichischen Akademie der Wissenschaften, 240 p., 81 pl. (Mitteilungen der Prähistorischen Kommission der Österreichischen Akademie der Wissenschaften 55).
- Kolníková E., 2003. Fundmünzen in den latènezeitlichen Burgwällen und anderen Höhenlagen in der Slowakei. *Slovenská archeológia*, 51, 223-246.
- Kovár B., 2016. The Settlements of the Hron, Ipel', Slaná and Rimava River Basins during the La Tène Period. In Berecki S. ed. *Iron Age Chronology in the Carpathian Basin, Proceedings of the International Colloquium from Târgu Mureș, 8-10 October 2015*. Cluj-Napoca, Editura MEGA, 219-234 (Bibliotheca Musei Marisiensis. Seria Archaeologica XII).
- Marzatico F., 1992. Il gruppo Fritzens-Sanzeno. In Metzger I. R., Gleirscher P. eds. *Die Räter. I Reti*. Bozen, Athesia, 213-246 (*Schriftenreihe der Arbeitsgemeinschaft Alpenländer. Herausgegebenen von der Kommission III /Kultur/. Collana della Comunità di lavoro regioni alpine. A cura della Commissione III /Cultura/*).
- Marzatico F., 2012. Fritzens-Sanzeno Kultur. In Sievers S., Urban O. H., Ramsel P. C. eds. *Lexikon zur keltischen Archäologie. A–K*. Wien, Verlag der Österreichischen Akademie der Wissenschaften, 570-572 (Mitteilungen der Prähistorischen Kommission 73).
- Metzger I. R., 1992. Vorwort. In Metzger I. R., Gleirscher P. eds. *Die Räter. I Reti*. Bozen, Athesia, 15-18 (*Schriftenreihe der Arbeitsgemeinschaft Alpenländer. Herausgegebenen von der Kommission III /Kultur/. Collana della Comunità di lavoro regioni alpine. A cura della Commissione III /Cultura/*).
- Mirošayová E., 1984. Südliche Kultureinflüsse auf die Ostslowakei in der Hallstattzeit. In Heřman K., Vladár J. eds. *Rapports, Co-rapports, communications tchécoslovaques pour le V^e congrès de l'association internationale d'études du sud-est européen*. Prague, Institut de l'histoire tchécoslovaque et mondiale de l'Académie tchécoslovaque des sciences, 21-36.
- Mirošayová E., 1992. Osídlenie Spiša v dobe halštatskej. In Czopek S. ed. *Ziemie polskie we wczesnej epoce żelaza i ich powiązania z innymi terenami. Materiały z konferencji, Rzeszów 17.-20. 09. 1991*. Rzeszów, Wydawnictwo Muzeum Okręgowego, 133-138.
- Mirošayová E., 1999. Einflüsse der Hallstattkultur in der Ostslowakei. In Jerem E., Poroszlai I. eds. *Archaeology of the Bronze and Iron Age. Experimental Archaeology – Environmental Archaeology – Archaeological Parks, Proceedings of the International Archaeological Conference, Százhalombatta 3-7 October 1996*. Budapest, Archaeolingua Alapítvány, 157-166 (Archaeolingua Series Maior 9).
- Mirošayová E., Javorský F., 1986. Ojedinelý nález laténskej bronzovej spony z Vítkoviec. *Archeologické rozhledy*, 38, 663-665.
- Möller C., 2000. Das Grab 13 von Leimersheim, Kr. Germersheim (Pfalz). Ein Beitrag zur Chronologie der Frühlatènezeit. *Archäologisches Korrespondenzblatt*, 30, 409-428.

- Moravčík J., 1986. Nálezy z Lednice, Púchova – Nimnice a Varína. *Archeologické výskumy a nálezy na Slovensku v roku 1985*, 161-163.
- Müller R., 2007. Die östliche Kontaktzone zwischen dem keltischen Kulturraum und dem Norden. In Möllers S., Schlüter W., Sievers S. eds. *Keltische Einflüsse im nördlichen Mitteleuropa während der mittleren und jüngeren vorrömischen Eisenzeit, Akten des Internationalen Kolloquiums in Osnabrück vom 29. März bis 1. April 2006*. Bonn – Frankfurt am Main, Dr. Rudolf Habelt GMBH – Römisch-Germanische Kommission des Deutschen Archäologischen Instituts zu Frankfurt am Main, 265-282 (Kolloquien zur Vor- und Frühgeschichte 9).
- Osterhaus U., 1981. *Zur Funktion und Herkunft der frühlatènezeitlichen Hiebmesser*. Marburg, Vorgeschichtliches Seminar, 31 p. (Kleine Schriften aus dem Vorgeschichtlichen Seminar Marburg 9).
- Parzinger H., 1988. *Chronologie der Späthalstatt- und Frühlatènezeit. Studien zu Fundgruppen zwischen Mosel und Save*. Weinheim, VCH Acta Humaniora, 361 p. (Quellen und Forschungen zur prähistorischen und provincialrömischen Archäologie 4).
- Pauli L., 1992. Auf der Suche nach einem Volk. Altes und Neues zur Räterfrage. In Metzger I. R., Gleirscher P. red. *Die Räter. I Reti*. Bozen, Athesia, 725-740 (Schriftenreihe der Arbeitsgemeinschaft Alpenländer. Herausgegebenen von der Kommission III /Kultur/. Collana della Comunità di lavoro regioni alpine. A cura della Commissione III /Cultura/).
- Paulík J., Zachar, L., 1975. Kultový objekt a hroby z doby laténskej v Palárikove. *Slovenská archeológia*, 23, 283-337.
- Píč L., 1903. *Čechy na úsvitě dějin 2. Hradiště u Stradonic jako historické Marobudum*. Praha, 143 p., 15 fig., 58 pl. (Starožitnosti země České 2).
- Pieta K., 1982. *Die Púchov-Kultur*. Nitra, Archeologický ústav SAV, 311 p. (Studia Archaeologica Slovaca Instituti Archaeologici Academiae Scientiarum Slovacae I).
- Pieta K., 1993. Stredolaténske zvieracie žiarové hroby alebo doklady kultových praktík z Nitra? [Mittellatènezeitliche tierische Brandgräber oder Belege über Kultpraktiken aus Nitra?] *Slovenská archeológia*, 41, 41-58.
- Pieta K., 1996. Liptovská Mara. Včasnohistorické centrum severného Slovenska. Nitra – Bratislava, Archeologický ústav SAV – Academic Electronic Press, 134 p., 16 suppl. (Monumenta Archaeologica Slovaciae 5).
- Pieta K., 1997. Neskorolaténske hradisko v Kvačanoch-Dlhej lúke. *Archeologické výskumy a nálezy na Slovensku v roku 1995*, 144-145.
- Pieta K., 2000a. Die Siedlung Liptovská Mara II und die Anfänge der Einflüsse der Latène-Kultur im Westkarpatenraum. *Slovenská archeológia*, 48, 315-346.
- Pieta K., 2000b. Latènezeitlicher Burgwall und Opferplatz (?) in Trenčianske Teplice. In „Gentes, Reges und Rom“. Auseinandersetzung – Anerkennung – Anpassung. Festschrift für Jaroslav Tejral zum 65. Geburtstag. Brno, 129-153 (Spisy Archeologického ústavu AV ČR Brno 16).
- Pieta K., 2003. Spiš vo včasnej dobe dejinnej [Die Zips in der Frühgeschichte]. In Gładkiewicz R., Homza M. eds. *Terra Scepusiensis. Stav bádania o dejinách Spiša*. Levoča – Wrocław, Kláštorisko, n. o. – Centrum Badań Śląskoznawczych i Bohemistycznych Uniwersytetu Wrocławskiego, 149-158.
- Pieta K., 2008. *Keltské osídlenie Slovenska. Mladšia doba laténska*. Nitra, Archeologický ústav SAV, 384 s. (Archaeologica Slovaca Monographiae. Studia XI).
- Pieta K., 2012a. Púchov-Kultur. In Sievers S., Urban O. H., Rams P. C. eds. *Lexikon zur keltischen Archäologie. L–Z*. Wien, Verlag der Österreichischen Akademie der Wissenschaften, 1544-1546 (Mitteilungen der Prähistorischen Kommission 73).
- Pieta K., 2012b. Bronzové náramky s vývalkami z konca doby halštatskej a začiatku doby laténskej na severnom Slovensku. In Kujovský R., Mitáš V. eds. *Václav Furmánek a doba bronzová. Zborník k sedemdesiatym narodeninám*. Nitra, Archeologický ústav SAV, 315-324 (Archaeologica Slovaca Monographiae. Communicationes XIII).
- Pieta K., 2014. Hradiská vo Folkušovej – Necpaloch a Blatnici: Juhovýchodné prvky v púchovskej kultúre [Burgwälle aus der Latènezeit in Folkušová – Necpaly und Blatnica: Südöstliche Elemente in der Púchov-Kultur]. *Slovenská archeológia*, 62, 125-165.
- Pieta K., 2018. Ein mittellatènezeitlicher Brandopferplatz in Slatina nad Bebravou. *Študijné zvesti Archeologického ústavu SAV*, 64, 89-113.
- Pieta K., Moravčík J., 1980. Spätlatènezeitlicher Opferplatz in Prosné. *Slovenská archeológia*, 28, 245-286.
- Pieta K., Barta P., Benediková L., in preparation The North Slovakian refuge places and the beginning of the La Tène Period in the northern part of the Western Carpathians. In Karwowski M., Rams P. C. eds. *Celts 2014, Proceedings of the conference*. Wien, Verlag der Österreichischen Akademie der Wissenschaften. (Mitteilungen der Prähistorischen Kommission in preparation).
- Rams P. C., 2002. *Das eisenzeitliche Gräberfeld von Pottenbrunn. Forschungsansätze zu wirtschaftlichen Grundlagen und sozialen Strukturen der latènezeitlichen Bevölkerung des Traisental, Niederösterreich*. Wien, Bundesdenkmalamt, 378 p. (Fundberichte aus Österreich. Materialhefte Reihe A Heft 11).
- Reitinger J., 1966. Die latènezeitlichen Funde des Braunauer Heimathauses. Ein Beitrag zur Kenntnis der latènezeitlichen Bronze- und Eisenketten. *Jahrbuch des Oberösterreichischen Musealvereins*, 3, 165-236.
- Roncador R., 2014. Celti e Reti tra v e i sec. a.C.: contesto culturale e progetto di ricerca “Karnyx di Sanzeno”. In Roncador R., Nicolis F. eds. *Antichi popoli delle Alpi. Sviluppi culturali durante l’età del Ferro nei territori alpini centro-orientali. Atti della giornata di studi internazionale, 1 maggio 2010, Sanzeno, Trento*. Trento, Provincia autonoma di Trento. Soprintendenza per i beni architettonici e archeologici, 157-181.
- Sankot P., 2005. Findings of La Tène weapons from Detva, central Slovakia. In Dobrzańska H., Megaw V., Poleska P. eds. *Celts on the Margin. Studies in European Cultural interaction 7th century BC – 1st Century AD. Dedicated to Zenon Woźniak*. Kraków, Institute of Archaeology and Ethnology of the Polish Academy of Sciences, 135-144.
- Sievers S., 2010. *Die Waffen aus dem Oppidum von Manching*. Wiesbaden, Verlag Dr. Ludwig Reichert, 182 p., 64 fig., 4 tables, 62 pl. (Die Ausgrabungen in Manching 17).

- Soják M., 2016. Cudzie mince v púchovskom kultúrnom prostredí severného Slovenska (so zameraním na Spiš). *Numizmatika*, 26, 16-21.
- Soják M., s. d. Dejiny Spišského Hrhova pod nánosmi hlíny. In Soják M., Endrödi J., Žifčák F., Chalupecký I., Zmátlo P., Kormošová R., Hudák P., Salanci J. *Spišský Hrhov*. Spišský Hrhov, Tlačiareň Svidnícka, s. r. o., 12-33.
- Šalkovský P., 1994. Hradisko v Detve. Katalóg archeologických prameňov z doby bronzovej, halštatskej, laténskej a rímskej, z obdobia sťahovania národov a včasného stredoveku. Nitra, Archeologický ústav SAV, 143 p. (Materialia Archaeologica Slovaca Instituti Archaeologici Academiae Scientiarum Slovaca XI).
- Šalkovský P., 2009. Detva. Praveké a včasnohistorické hradisko k dávny dejinám Slovenska. Nitra, Archeologický ústav SAV, 124 p. (Monumenta Archaeologica Slovaciae 10).
- Šalkovský P., 2002. Výšinné hradisko v Detve – protohistorické osídlenie [Höhenburgwall in Detva, protohistorische Besiedlung]. *Slovenská archeológia*, 50, 99-126.
- Teržan B., 1976. Certoška fibula. *Arheološki vestnik*, 27, 317-536.
- Thomas R., 2018. Ein singulärer Bronzefund aus Slatina nad Bebravou. *Študijné zvesti Archeologického ústavu SAV*, 64, 115-147.
- Venclová N., 1990: *Prehistoric glass in Bohemia*. Praha, Archeologický ústav ČSAV, 415 p.

Authors

Lucia BENEDIKOVÁ, Archeologický ústav SAV, Akademická 2, SK-949 21 Nitra; lucia.benedikova@gmail.com

Karol PIETA, Archeologický ústav SAV, Akademická 2, SK-949 21 Nitra; karol.pieta@savba.sk

Abstract

The article deals with the Early, and the beginning of the Middle La Tène Periods (LT A–C1/ C2) evidence from the mountainous regions of Slovakia, i.e. from the Slovakian part of the Western Carpathians, with regard to the preceding Late Hallstatt cultural tradition in this territory. Four horizons of cultural-historical development are defined; these are based on analysis of material culture and settlement development: 1. Ha D-LT A/B1; 2. LT A–B2a/b; 3. LT B2b–C1; 4. LT C1–C1/C2. These horizons cannot however be considered as entirely sequential, as they partially overlap. They reflect the informative value of the sources available at the individual sites and/or regions and the cultural tradition in which they originated rather than to represent an overarching chronological scheme for the entire area under study. At given time, the territory under investigation was divided into three cultural-geographical zones: a. core mountainous region marked by the occurrence of typical local pottery and other local material culture types with relatively little by way of La Tène elements during the Early and Middle La Tène Periods; b. a north-western buffer zone with few pottery finds but with early (LT A–B2a/b) elements of La Tène culture; and c. a southern buffer zone with a conspicuous increase in the number of sites with La Tène elements (including pottery) especially from late LT C1 onwards. Comparisons between the cultural-historical development of the territory of the Western Carpathians of Slovakia from Late Hallstatt to early Middle La Tène Period demonstrated similar dynamics to those apparent in other Alpine cultures and/or in northward situated contact zones between La Tène culture and other European Iron Age populations.

Zusammenfassung

Die Früh- und Mittellatènezeit in den slowakischen Westkarpaten. Ein aktueller Forschungsstand. Die Studie befasst sich mit den archäologischen Quellen der Früh- bis Mittellatènezeit (LT A-C1/C2) im gebirgigen Teil der Slowakei, d.h. im slowakischen Abschnitt der Westkarpaten, unter Einbeziehung der bis in die Späthallstattzeit reichenden einheimischen Traditionen. Auf Basis der Analyse der Sachkultur und der Entwicklung der Siedlungsstrukturen konnten vier Zeithorizonte der lokalen kulturhistorischen Entwicklung unterschieden werden: 1. Ha D-LT A/B1; 2. LT A-B2a/b; 3. LT B2b-C1; 4. LT C1-C1/C2. Diese Horizonte können jedoch nicht als streng aufeinanderfolgend betrachtet werden, sondern als in ihren End-/Anfangsphasen teilweise überlappend. Sie spiegeln eher die Aussagekraft der Quellen der einzelnen untersuchten Fundorte und/oder Regionen wider, die durch eine Kulturtradition bedingt sind, als dass sie ein allgemein gültiges Chronologieschema für das gesamte erforschte Gebiet darstellen. Nach heutigem Forschungsstand kann das untersuchte Gebirgsland in drei kultur-geographische Bereiche gegliedert werden: a. ein Kerngebiet mit typisch einheimischer Keramik und anderen lokalen Formen der materiellen Kultur und einem geringem Anteil typischer Elemente der Latènekultur in der Früh- und Mittellatènezeit; b. eine nordwestliche Pufferzone mit spärlichen Keramikfunden, jedoch mit frühen (LT A-B2a/b) Elementen der Latènekultur; c. eine südliche Pufferzone mit auffälliger Zunahme der Siedlungen mit Latène-Elementen in der materiellen Kultur (einschließlich Keramik) ab der Mittellatènezeit (LT C1). Das bisher gewonnene sehr lückenhafte Gesamtbild erinnert an ähnliche Besiedlungsmodelle der Mischkulturen im Alpenbereich sowie in den nördlicher liegenden Kontaktgebieten der Latène-Zivilisation mit anderen europäischen eisenzeitlichen Bevölkerungen.

Table 1. Late Hallstatt to early Middle La Tène Period sites (late Ha D-LT C1/C2) in Slovakian Western Carpathians (cf. fig. 1).

Site No.	Municipality	Municipality local part	Location/Site	District	Site type
0	«Liptov»	-	-		IF?
0	«Turiec»	-	-		IF?
0	«Zips»/Veľký Slavkov ?	-	-	-	IF
1	Batizovce	-	Romanesque church	Poprad	C/Gr
2	Bátovce	-	-	Levice	H
3	Beluša	Belušské Slatiny	-	Púchov	IF?
4	Beluša	Hloža - Podhorie	Skalné vráta	Púchov	S
5	Blatnica	-	Plešovica	Martin	HF; H
6	Blatnica	-	Plešovica?/Rovná?	Martin	IF
7	Blatnica	-	Plešovica?/Rovná?	Martin	IF
8	Blatnica	-	Rovná	Martin	R; HF/IF
9	Blatnica	-	Tisová	Martin	IF
10	Bobrovec	-	Mních	Liptovský Mikuláš	R
11	Závada	-	Zľavy	Topoľčany	S
12	Brusno	-	Stará Mara	Banská Bystrica	S
13	Budča	-	Right bank terrace of Hron river before inflow of Turová stream	Zvolen	S
14	Bytča	Hrabové	Northern foothill of Hôrka/Niva/Podhôrčie	Bytča	S
15	Čachtice	-	Kamence	Nové Mesto nad Váhom	Gr
16	Čachtice	-	-	Nové Mesto nad Váhom	IF
17	Čebovce	-	Zámok	Veľký Krtíš	HF
18	Detva	-	Kalamárka	Detva	HF
19	Detva?	-	-	Detva	H
20	Divinka	-	Veľký vrch	Žilina	HF
21	Dolný Kubín	Veľký Bysterec	Trniny	Dolný Kubín	HF
22	Dolný Kubín	Záskalie pri Dolnom Kubíne	(Mokrad')-Homofa	Dolný Kubín	HF?
23	Folkušová - Necpaly	-	Červený grúň and other locations in the cadastre	Martin	S; HF; IF
24	Gánovce	-	Hrádok	Poprad	indet
25	Háj	-	Kamenná tvár	Košice-okolie	CS
26	Hajná Nová Ves	-	Lúky	Topoľčany	S
27	Hatné	-	Hrádek/Hrádok	Považská Bystrica	HF
28	Hloža	-	Skalné vráta	Púchov	S
29	Horná Lehota	-	Hrádok	Brezno	HF
30	Horná Lehota	-	Pod Hrádkom	Brezno	S
31	Horné Srnie	-	Hradisko	Trenčín	HF
32	Hrabušice	-	-	Spišská Nová Ves	H/IF
33	Hrabušice	-	Nearby Hornád river	Spišská Nová Ves	S
34	Hrabušice	-	Pod Zelenou Horou	Spišská Nová Ves	S; H
35	Hrabušice	-	Zelená hora	Spišská Nová Ves	HF
36	Hričovské Podhradie	-	Skalka	Žilina	S
37	Hrochoť	-	-	Banská Bystrica	indet
38	Hronská Dúbrava	-	Hrádok?	Žiar nad Hronom	HF
39	Hronský Beňadik	Psiare	Pig farm	Žarnovica	S
40	Istebné	-	Hrádok	Dolný Kubín	HF; H
41	Ižipovce	-	Ižipovské Ravne	Liptovský Mikuláš	IF
42	Jalovec	-	Hrádok	Liptovský Mikuláš	HF?
43	Jánovce	Machalovce	Hradisko	Poprad	HF
44	Jánovce	Machalovce	Pod Hradiskom	Poprad	S
45	Jasenica	-	Hradište	Považská Bystrica	HF
46	Jasenovo	-	Vyšehrad	Turčianske Teplice	HF
47	Kežmarok	-	Jeruzalemburg	Kežmarok	HF
48	Kežmarok	-	Jordanov prameň (Jordan's Spring)	Kežmarok	S?
49	Konská	-	-	Liptovský Mikuláš	HF
50	Košeca	Nozdrovica	Pod Hradištom	Ilava	S
51	Kotmanová	-	Pohanský vrch	Lučenec	HF

C. Cemetery; Gr. Grave; Br. Barrow; S. Settlement; HF. Hillfort, HT. Hilltop settlement;
R. Refuge place; O. Offering site; CS. Cave site; H. Hoard; IF. Isolated find; indet. not specified

52	Krásna Ves	-	-	Bánovce nad Bebravou	IF
53	Krnča	-	Tábor (385 m)	Topoľčany	HF; EF
54	Kvačany	-	Chopce/Žiarec/Žiar	Liptovský Mikuláš	S
55	Kvašov - Horovce - Dolná Breznica	-	Ostrá Hora	Púchov	HF
56	Lazisko	-	Zvon	Liptovský Mikuláš	HF
57	Lazisko	-	Žiarec	Liptovský Mikuláš	HF
58	Letanovce	-	Čertova díera	Spišská Nová Ves	S
59	Levoča	-	Fitríft	Levoča	S
60	Levoča	-	Kúty-Burg	Levoča	S
61	Lieskovec	-	Kameňolom (Quarry)	Zvolen	HF
62	Likavka	-	Likavský hrad - outer ward	Ružomberok	HT/HF
63	Likavka	-	Predný lán/Predný hon/Predné hony	Ružomberok	S
64	Likavka - Martinček	-	Predný Choč (western peak)	Ružomberok	R
65	Liptovská Sielnica	-	Sielnický hrad	Liptovský Mikuláš	R
66	Liptovská Sielnica	Liptovská Mara	I/Havránok	Liptovský Mikuláš	HF
67	Liptovská Sielnica	Liptovská Mara	II/Rybníky	Liptovský Mikuláš	S
68	Liptovská Sielnica	Liptovská Mara	III/Za panskými humny	Liptovský Mikuláš	S
69	Liptovská Sielnica	Liptovská Mara	IV/Vlašky	Liptovský Mikuláš	S
70	Liptovská Sielnica	Liptovská Mara	VI/Dlžiny	Liptovský Mikuláš	S
71	Liptovská Sielnica	Liptovská Mara	VII/Kamenica	Liptovský Mikuláš	S
72	Liptovská Štiavnica	-	Kohút	Ružomberok	R?
73	Liptovská Štiavnica	-	Lúčny hrib	Ružomberok	HF
74	Liptovská Štiavnica	-	Pod Lúčnym hribom	Ružomberok	indet
75	Liptovské Matiašovce	-	Nad Občasnou vyvierackou (Suchá dolina)	Liptovský Mikuláš	CS
76	Liptovské Matiašovce	-	Dúpnica	Liptovský Mikuláš	CS
77	Liptovské Matiašovce	-	Kote 950 m/Nad Konislavou	Liptovský Mikuláš	HF
78	Liptovský Ján	-	Hrádok	Liptovský Mikuláš	HF
79	Liptovský Mikuláš	Ploštín	Pod Rohačkou	Liptovský Mikuláš	S
80	Liptovský Mikuláš	Ploštín - Iľanovo	Rohačka/Hrádok	Liptovský Mikuláš	HF
81	Liptovský Mikuláš - Demänovská Dolina	Ploštín - -	Demänovská Poludnica/Demänovská hora	Liptovský Mikuláš	R
82	Liptovský Trnovec	-	Priehonisko/Konislava/Konislavy	Liptovský Mikuláš	Br
83	Lisková	-	Jaskyňa na Mníchu (Cave in Mních hill)	Ružomberok	CS
84	Lisková	-	Konislav	Ružomberok	HF
85	Lisková	-	Pred Liskovskou jaskyňou (In front of the Lisková Cave)	Ružomberok	S
86	Lopušné Pažite	-	Podhuboč/Zárečie	Kysucké Nové Mesto	S
87	Lovča	-	Žalné uhly	Žiar nad Hronom	S
88	Lučatín	-	Hradisko	Banská Bystrica	R?
89	Ludrová	-	Stráňa	Ružomberok	HF
90	Malachov (former Horné Pršany)	-	Hrádok	Banská Bystrica	HF
91	Malé Kršteňany	-	Pieskovňa (Sand pit)	Partizánske	S
92	Málinec	-	Zámok (740 m)	Poltár	IF
93	Martin	Priekopa pri Martine	Hrádok	Martin	HF?
94	Mošovce	-	Háj	Turčianske Teplice	indet
95	Mošovce	-	Pod Červeným	Turčianske Teplice	indet
96	Moštenica	-	Skalka	Banská Bystrica	HF
97	Nemecká	-	Hradisko (786,3 m)	Brezno	HF
98	Nimnica	-	Hôrky/Humnište/Kúty	Púchov	S
99	Nimnica	-	Prievraty/Paprudné	Púchov	S
100	Nimnica - Udiča	-	Holíš/Holíš/Holíž	Púchov - Považská Bystrica	HT/HF
101	Nižná	Nižná nad Oravou	Ostražica	Tvrdošín	HF
102	Nová Lesná	-	Pieskovisko/Piesková baňa/Hliník	Poprad	S; HF
102a	Ondrašová	-	Odrašovské skaly	Turčianske Teplice	S
103	Oravský Podzámok	-	Oravský hrad	Dolný Kubín	HF
104	Pavčina Lehota	-	Zámeček/Zámček/Žiarec	Liptovský Mikuláš	HF; R
105	Pavčina Lehota - Demänovská Dolina	-	Na jame	Liptovský Mikuláš	R
106	Podbiel	-	I/Za Bielym	Tvrdošín	C
107	Podbiel	-	IV/Biely/Biela skala	Tvrdošín	HF

108	Podhorie	-	Košova roľa	Žilina	S
109	Podhradie	-	Úhrad	Topoľčany	HF; H
109a	Podhradie	-	Mníchova roľa	Topoľčany	S
110	Podskalie	-	Podskalský Roháč	Považská Bystrica	HF
111	Podtureň	-	Bašta	Liptovský Mikuláš	HF
112	Podtureň	-	Velínok/Velink/Veling	Liptovský Mikuláš	HF
113	Poniky	Ponická Huta	Baby	Banská Bystrica	HT/HF
114	Poprad	Matejovce	Nad kopčekom I	Poprad	IF
115	Poprad	Veľká	Hore Červeným potokom	Poprad	S; IF
116	Považská Bystrica	-	-	Považská Bystrica	IF
117	Považská Bystrica	Dušanica	-	Považská Bystrica	S
118	Považská Bystrica	Považská Teplá	Malý Manín	Považská Bystrica	HF
119	Prašník	-	Tlstá hora	Piešťany	HF/IF
120	Považská Bystrica	Praznov	Bukovina	Považská Bystrica	S
121	Priechod	-	Kopec	Banská Bystrica	HT/HF
122	Pružina	-	Michalová	Považská Bystrica	H; HF?
123	Púchov	-	-	Púchov	IF
124	Púchov	-	Skalka	Púchov	HF
125	Púchov	-	Umgebung	Púchov	IF
126	Radošina	-	Behynské/Jochy	Topoľčany	IF
127	Ružomberok	-	Sidorovo/Hýrová/Žiar/Pražma	Ružomberok	R
128	Rybník	-	Krivín	Levice	HF
129	Sedliacka Dubová	-	Úpätie Hrádku (Foothill of Hrádok)	Dolný Kubín	S
130	Selec	-	Hradisko (732 m)	Trenčín	HF; IF
131	Skalka nad Váhom - Trenčín	Skala - Opatová	Skalka	Trenčín	HF
132	Sklabinský Podzámok - Turčianska Štiavnička	-	Katova skala	Martin	HF; H
133	Slatina nad Bebravou	-	Udrina (652 m)	Bánovce nad Bebravou	HF
134	Slatina nad Bebravou - Timoradza	-	Smrďlavý vrch/Pod Smrďlavým vrchom	Bánovce nad Bebravou	O
135	Slovenské Pravno	-	Prašnica/Lamošova Prašnica/Vyšé Lamošov	Turčianske Teplice	IF
136	Slovenské Pravno	-	Sokolná skala/Sokolnia skala	Turčianske Teplice	S
137	Slovenské Pravno	-	Sokolný jarok	Turčianske Teplice	S
138	Smrečany	-	Hrádok	Liptovský Mikuláš	HF
139	Soblahov	-	Ostrý vrch (767 m)	Trenčín	HF
140	Spišská Teplica	-	Pod kameňom	Poprad	S
141	Spišská Teplica	-	Pod Popradom II/Brehy	Poprad	S; IF
142	Spišské Tomášovce	-	Pod Hradiskom-Čingov	Spišská Nová Ves	S
143	Spišský Hrhov	-	-	Levoča	S
144	Stará Bašta	-	Črepová jaskyňa («Sherd cave») on the southern slope of Pagan castle	Rimavská Sobota	CS
145	Stará Kremnička	-	-	Žiar nad Hronom	indet
146	Stráža	-	Hrádok	Žilina	HF?
147	Stupné	-	Žeravica	Považská Bystrica	HF
148	Tisovec	-	Hradová	Rimavská Sobota	HF
149	Topoľčany	-	Krušovská cesta	Topoľčany	S
150	Trebostovo	-	Žiar	Martin	HF
151	Trenčianske Teplice	-	Nad tehelňou	Trenčín	indet
152	Trenčianske Teplice	-	Seravy	Trenčín	O
153	Trenčín	-	Burg	Trenčín	HT/HF
154	Trenčín	-	Tehelňa (Brickyard)	Trenčín	S
155	Trenčín	Trenčianske Biskupice	-	Trenčín	HF
156	Trnavá hora	-	Hrádok	Žiar nad Hronom	HF
157	Trnavá hora	Jalná	Suť	Žiar nad Hronom	S?
158	Tuchyňa	-	Lipovka	Ilava	S
159	Udiča	-	Malá Udiča/Háj	Považská Bystrica	S
160	Udiča	-	Úpätie Klapov (Foothill of Klapy)	Považská Bystrica	S; H
161	Udiča	-	Klapy/Klape	Považská Bystrica	HF
162	Vavrišovo	-	Vavrišovský háj/Háje	Liptovský Mikuláš	HT/S
163	Veličná	-	Veľká Skalica	Dolný Kubín	HF?
164	Veľký Slavkov	-	Burich	Poprad	HF; H/IF
165	Veľký Slavkov	-	Pod Burichom	Poprad	IF
166	Visolaje	-	Zákluky	Púchov	S

167	Vítkovce	-	Tureň	Spišská Nová Ves	IF
168	Vysoké Tatry	Starý Smokovec - Dolný Smokovec	Burich	Poprad	HF
169	Vysoké Tatry	Starý Smokovec/Pod Lesom	Hradisko	Poprad	HF
170	Vysoké Tatry	Starý Smokovec-Tatranská Polianka	Žltá stena/Žltý vrch	Poprad	HF
171	Vyšný Kubín	-	Foothill of Ostrá skala/Chmelince, Za lúky, Železný laz, Medziskalie, Janovie lazy	Dolný Kubín	S
172	Vyšný Kubín	-	Ostrá skala	Dolný Kubín	HF
173	Vyšný Kubín	-	Tupá skala	Dolný Kubín	HF
174	Závažná Poruba	-	Chopce	Liptovský Mikuláš	S
175	Závažná Poruba	-	Končistý/Končitý vrch	Liptovský Mikuláš	R
176	Závažná Poruba - Liptovský Ján	-	Iľanovská Poludnica	Liptovský Mikuláš	R
177	Zemianske Podhradie	-	Hradištia	Nové Mesto nad Váhom	HF
178	Zvolen	-	-	Zvolen	HF
179	Zvolen	-	Pod bralami	Zvolen	S
180	Zvolen	Môťová	Priekopa/Priekopy	Zvolen	HF
181	Žehra	-	Hlinky I	Spišská Nová Ves	S
182	Žehra	-	Spišský hrad	Spišská Nová Ves	HF
183	Žiar nad Hronom	-	Závody Slovenského národného povstania (Factory)	Žiar nad Hronom	S?
184	Žiar nad Hronom	-	Mestský park (Town park)	Žiar nad Hronom	S?
185	Žiar nad Hronom	Šášovské Podhradie	Suť (718 m)	Žiar nad Hronom	HF
186	Žilina	Strážov	Podháj	Žilina	S
187	Žilina	Strážov	Tomanová	Žilina	S?
188	Žilina	Strážov	Závršnie	Žilina	S
189	Žilina	Vranie	Ročovica	Žilina	HF; IF