



HAL
open science

Paleoecological first results on the Middle Pleistocene sequence of Coudoulous I (Quercy, Lot, France)

Philippe Fernandez, Marcel Jeannet, Jacques Jaubert, Jean-Philip Brugal

► To cite this version:

Philippe Fernandez, Marcel Jeannet, Jacques Jaubert, Jean-Philip Brugal. Paleoeological first results on the Middle Pleistocene sequence of Coudoulous I (Quercy, Lot, France). *Alpine and Mediterranean Quaternary*, 2021, AN OVERVIEW OF THE MIDDLE PLEISTOCENE IN THE NORTH MEDITERRANEAN REGION, 34 (1), pp.89-107. 10.26382/AMQ.2021.12 . halshs-03362576

HAL Id: halshs-03362576

<https://shs.hal.science/halshs-03362576>

Submitted on 1 Oct 2021

HAL is a multi-disciplinary open access archive for the deposit and dissemination of scientific research documents, whether they are published or not. The documents may come from teaching and research institutions in France or abroad, or from public or private research centers.

L'archive ouverte pluridisciplinaire **HAL**, est destinée au dépôt et à la diffusion de documents scientifiques de niveau recherche, publiés ou non, émanant des établissements d'enseignement et de recherche français ou étrangers, des laboratoires publics ou privés.

PALEOECOLOGICAL FIRST RESULTS FROM THE MIDDLE PLEISTOCENE SEQUENCE OF COUDOULOUS I (QUERCY, LOT, FRANCE).

Philippe Fernandez ¹, Marcel Jeannet ^{†1}, Jacques Jaubert ²,
Jean-Philip Brugal ¹

¹ CNRS, UMR 7269 LAMPEA, Aix Marseille Université, CNRS, Minist. Culture, Aix-en-Provence, France.

² University of Bordeaux, CNRS-MC, UMR 5199 PACEA, Pessac, France.

Corresponding author: Philippe Fernandez <philippe.fernandez@univ-amu.fr> and Jean-Philip Brugal <brugal@mms.h.univ-aix.fr>

ABSTRACT: The Coudoulous I (Lot, France) sequence has yielded abundant fossil associations dated to the end of the Middle Pleistocene. The total sample consists of 102 taxa corresponding to 75 species of mammals (53 small and 22 large mammals), 11 species of amphibians and 16 species of reptiles distributed in five faunal units (FUs). After evaluating the sample quality with completeness indices (CI and CI_{bda}), we established rarefaction curves that were discussed at length together with Shannon-Wiener diversity (H'), Margalef species richness (D), and the Sørensen-Dice similarity index. In order to better understand structural changes in the mammal associations as well as the climate trends we built the body mass distribution with cenograms in the different FUs. Concurrently, we investigated the whole community using a more analytical approach with the "bioclimatic model" based on a climatic restriction index for each species to infer paleoclimatic proxies (i.e. temperatures, precipitation, aridity) and finally to assign each faunal unit to a dominant type of climate. Our results clearly indicate that the FUs could be systematically associated with a typical temperate climate with sub-Mediterranean temperate species for the largest part of the sequence, which is consistent with the dates obtained (U/Th, ESR/U-series, TT-OSL) and Marine Isotope Stage 7. Nevertheless, cold elements from a Boreal type climate component were also found in the sequence indicating possible climate oscillations in FUs. The upper part of the stratigraphy (FU_{iii}) is probably related to MIS 6 while the lowest part of the sequence (FU_{vii}) could correspond to a cold phase of the MIS 7 or earlier (MIS 8?).

Keywords: Vertebrate community, diversity, cenograms, bioclimatic model, climate reconstruction, MIS 6-7.

1. INTRODUCTION

Less than a dozen sites in the French Mediterranean region are dated to the Middle Pleistocene, and perhaps only twenty in southern France (see fig. 2 in Brugal et al., 2020). Among them, the Coudoulous sites show one of the most well-constrained chronostratigraphical sequences, yielding very rich and diversified fossil vertebrate and invertebrate associations (Jaubert et al., 2005). The Quercy region, where Coudoulous is situated, exhibits numerous and varied archeological and/or paleontological sites covering the last 0.3 Myr within a wide range of environmental and climatic contexts (Jaubert et al., 2013; Jeannet et al., 2013; Brugal et al., 2013). This region is located at the periphery of the Mediterranean ecological area, subject to the Atlantic conditions of the Aquitaine basin and bordered by the low mountainous area of the Massif Central. We propose in this contribution to depict the succession of fossil associations

throughout the complete sequence of Coudoulous I, attributed to the end of the Middle Pleistocene, with the aim of characterizing paleoecological and climatic dynamics.

2. THE COUDOULOUS SITES

The Coudoulous (Coud) sites are located in the Quercy area (44°28'40"N & 1°39'50"E), not far from the Paleolithic cave art site of Pech-Merle (Cabrerets), a region of small Jurassic limestone plateaus divided by more or less narrow valleys and rivers. These sites are in a high position (280m asl) at the junction of the river Lot and its tributary, the Célé (Fig. 1), and correspond to two distinct karstic cavities, namely Coud I and Coud II. First explored with a rescue excavation in 1978-1980 (Bonifay & Clottes, 1981; Jaubert, 1984), the sites were investigated between 1994 and 2003 by J. Jaubert (for Coud I) (Jaubert et al., 2005) and J.P. Brugal (for Coud II) (Brugal et al., 1998; Costamagno, 1999; Brugal, 2006). Here we focus on

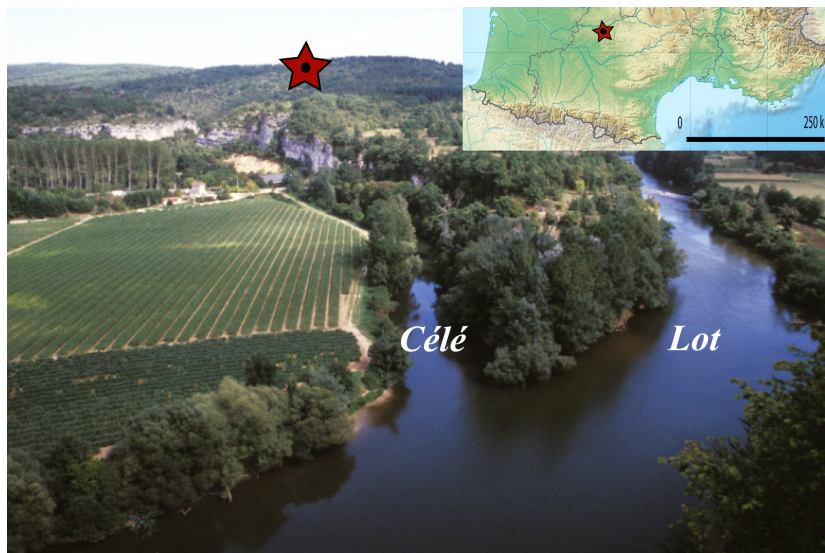


Fig. 1 - Location of Coudoulois sites. Photo J. Jaubert and map reworked from Electronic reference (18).

the Coudoulois I site, with a brief overview and synthesis of the different studies made of this site and its chronological sequence.

2.1. The Coudoulois I sequence

The karstic cavity represents a pitfall (*aven*), with a main vertical entrance after the collapse of the roof above a large room (15-20 m diameter) presently completely filled with detrital (clays, sands, angular limestone rocks) or carbonate (speleothems) deposits, to a total of ca.10 m in thickness (Jaubert et al., 2005). The sequence is divided into 10 stratigraphic layers grouped into 4 main units/formations but only the lower and middle units yield lithic artefact and fossil re-

mains (Fig. 2). Several levels (from 3 at the top to 8 at the bottom) and sub-levels (at least 31) are distinguished within these units. The sequence is bracketed by two speleothems dated by U/Th (Fig. 2): the upper one (between levels 2 and 3) is assigned to MIS 5 (126[+20/-46] and 139[+13/-11] kyr) and, the thick basal one (level 8g-e) at the limit of the method (229 [+78/-42] and 202[+78/-39] kyr) is less accurate (Quinif *in* Jaubert et al., 2005; Couchoud, 2006). Two other stalagmitic floors are observed in the sequence (respectively levels 8a and 8c) and all are important periods of sedimentation with a pause in fossil deposition, and should be considered as natural limits or cut-offs. The sequence has been dated by U/Th, ESR/U-series and TT-OSL on teeth and bone and sedimentary

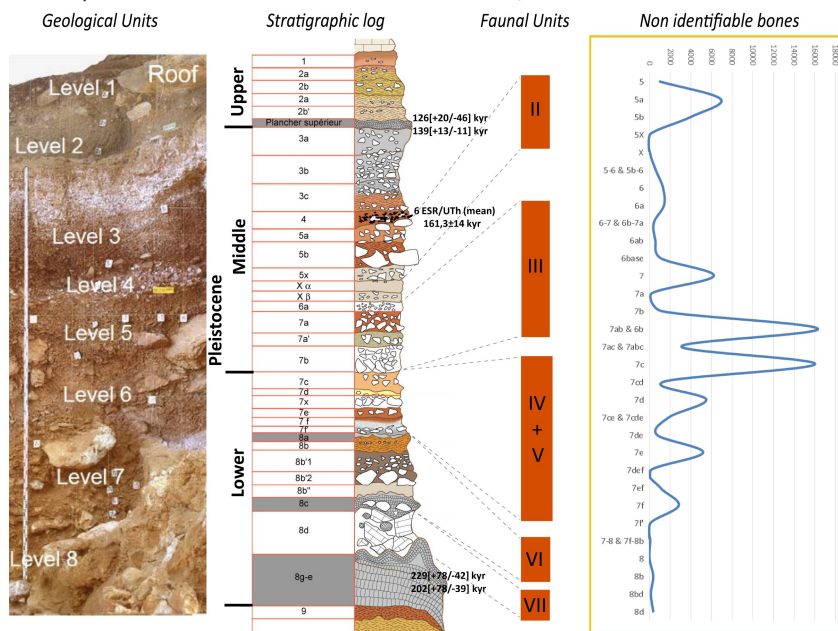


Fig. 2 - Coudoulois I, from left to right: Photo of the geological units (black arrow=2 m); Stratigraphic log with datations (grey bar=speleothems); Faunal Units; Distribution of non-identifiable bone remains (n total=80.452) throughout levels 5 to 8.

quartz samples (Hernandez et al., 2015) giving correlations from MIS 7 to MIS 6.

A very rich archaeological level (level 4) occurs at the top of the Coudoulous I sequence, and the levels (3 to 1) above it are sterile. Level 4 yielded abundant lithic artefacts (flint, quartzite), with Levallois core reduction, reported as Early Middle Paleolithic (EMP: stage 6.5) (Jaubert, 1995; Mourre, 1996), associated with a dominant species, the bison (98%), with very few horse and wolf remains. The bison record includes a minimum of 232 individuals, represented by all skeletal parts, but strongly affected by taphonomic processes, which have preferentially removed axial and cephalic bone elements. Teeth are good zooarchaeological and paleoclimatic indicators and demonstrate a catastrophic mortality pattern (juveniles and young adults dominant) and a late spring-early summer seasonality (Brugal, 1999a, 1999b; Brugal & Jaubert, 2006; Hélène Martin, pers. comm.). Oxygen isotope analysis of phosphate in tooth enamel ($\delta^{18}O_p$) shows contrasted seasons with a minimal annual temperature of 9 ± 3 °C, which is about 4 °C lower than at present (Bernard et al., 2009).

EMP or Lower Paleolithic artefacts are scarce and dispersed in the middle to lower units (levels 5a to 8d), and made on quartz, quartzite, metamorphic and volcanic rocks. The techno-typological analysis places this industry within the variability of the Acheulean despite the absence of typically bifacial tools, but with some large cutting tools (LCTs) present (Jaubert, 1995; Jaubert & Servelle, 1996). An interdisciplinary study has demonstrated that the cavity was used for marginal scavenging by Lower Paleolithic hominid groups and as a kill-butchery site during the EMP (Brugal & Jaubert, 1991, 2021; Jaubert et al., 2005).

2.2. Material

This contribution is the first paleoecological analysis of the vertebrate associations from the middle and lower units (levels 5 to 8) of Coudoulous I (Fig. 2). This site represents one of the rare stratigraphic sequences of the Middle Pleistocene yielding a very rich and diversified fauna (NISP=9864). Moreover, a total of more than 80 000 splinters and bone shaft fragments (non-identifiable remains) were also collected during the excavations. Following geological and stratigraphical observations (Kervazo et al., 2021) and the distribution and abundance of faunal remains (Brugal, 2021), 6 faunal units (FU) were identified. According the stratigraphic log in Fig. 2, FU_I includes only level 4. FU_{II} and FU_{III} correspond to the middle units, with levels 5 and 6a to 7b, respectively. The two lower speleothems are used as limits in the distinction of the subsequent FUs (FU_{IV+V} to FU_{VII}). FU_{IV+V} have been regrouped here and correspond to level 7c to 7f'. FU_{VI} includes levels 8a to 8c and FU_{VII} corresponds to level 8d.

For the paleoecological purposes of this study the taxonomic determinations were realized at species level in five faunal units (FU_I, FU_{III}, FU_{IV+V}, FU_{VI}, FU_{VII}) thanks to detailed studies (Jeannet, 2021, for microvertebrates; Argant, 2021, for felids and ursids; Mallye, 2021, for mustelids; Boudadi-Maligne, 2021, for canids) and our own studies (equids, bovids, caprids, cervids, rhinocerotids, proboscids). The remains with marking errors or that might have been shuffled be-

tween different stratigraphic levels were not included. We took into account 9864 Number of Identified Specimens (NISP) from 102 species including small mammals such as rodents (n=35), lagomorphs (n=4), and chiropters (n=14), but also large mammals including ungulates (n=10) and carnivores from small to medium size (n=12), and respectively 16 and 11 species of reptiles and amphibians (Tab. 1).

3. METHODS

Ever since the work of Leonard and Jones (1989) concerning the concept of “diversity”, methodological and theoretical approaches have continued to be topical in paleobiological contexts for studying animal communities (rarefaction, richness, sample size, sample unit of measurement, appropriate diversity indices, etc.). Here we present the paleoecological analysis of the Coudoulous I mammals, applying and sometimes cross-referencing different methods (concept, mathematical formulations, limits) to see if they lead to similar results in the different faunal units of this site.

3.1. Completeness indices (CI) and (CI_{bda})

Natural taphonomic processes as well as carnivore activity and anthropogenic modifications are the key factors that explain biased samples from original deposits. Nevertheless, completeness indices (CI) and (CI_{bda}) (Maas & Krause, 1994; Maas et al., 1995) make it possible to evaluate the quality of the sample in the faunal units, starting with the presence (1) absence (0) of species (Palombo et al., 2008). Completeness indices are based on the assumption of the range-through of the species represented, meaning that a given species, which is present before and after, but not during an interval of time is supposed to have been in continuous existence from its first to last appearance in the stratigraphy. In this particular case, missing species probably result from taphonomic bias, poor sampling or bad preservation of the fossil remains. It should be added that between their first and last appearances, some missing species could have diffused to new landscapes or different habitats in response to strong climate changes.

The completeness indices CI and CI_{bda} are calculated as follows (see details in Maas et al., 1995; Palombo et al., 2008; Fernandez, 2009):

$$\text{Eq. (1)} \quad CI = [N_t / (N_t + N_{rt})] * 100$$

$$\text{Eq. (2)} \quad CI_{bda} = [N_{bda} / (N_{bda} + N_{rt})] * 100$$

N_t is the number of species known before, during and after the faunal unit considered, including taxa having their first or last occurrences in the interval.

N_{rt} is the number of species known before and after, but not during the faunal unit interval. To calculate N_{rt} in the last and the first faunal units respectively FU_{II} and FU_{VII}, we used species' chronological extension from the works of Palombo et al. (2008) as well as Fernandez (2009). Because N_{bda} is the number of species only known before, during and after a faunal unit interval, CI_{bda} excludes the first and last FU whereas CI allows us to take into account all of the faunal units (Maas et al., 1995; Palombo et al., 2008).

| Faunal units (FU _i) | FU _{II} | | FU _{III} | | FU _{IV} | | FU _V | | FU _{VI} | | (ln) | Bibliographic references for the calculation of (ln) | | |
|---------------------------------|---------------------------------------|-----------------------------|-------------------|-----|------------------|-----|-----------------|-----|------------------|-----|------|--|---|---|
| | NISP | (S) | NISP | (S) | NISP | (S) | NISP | (S) | NISP | (S) | | | | |
| Rodentia (n=33) | <i>Microtus arvalis</i> | 1037 | 1 | 959 | 1 | 553 | 1 | 285 | 1 | 7 | 1 | 3,35 | Smith et al. (2003) | |
| | <i>Microtus agrestis</i> | 168 | 1 | 284 | 1 | 74 | 1 | 81 | 1 | 2 | 1 | 3,47 | Smith et al. (2003) | |
| | <i>Microtus gregalis</i> | 98 | 1 | 234 | 1 | 265 | 1 | 10 | 1 | 1 | 1 | 3,86 | Smith et al. (2003) | |
| | <i>Microtus oeconomus</i> | 20 | 1 | 39 | 1 | 43 | 1 | 2 | 1 | 1 | 1 | 3,91 | Smith et al. (2003) | |
| | <i>Chionomys nivalis</i> | 1 | 1 | 0 | 0 | 3 | 1 | 1 | 1 | 0 | 0 | 3,99 | Smith et al. (2003) | |
| | <i>Microtus brecciansis</i> | 88 | 1 | 77 | 1 | 68 | 1 | 28 | 1 | 3 | 1 | 3,96 | Smith et al. (2003) cf. <i>Microtus cabreræ</i> | |
| | <i>Microtus multiplex</i> | 68 | 1 | 54 | 1 | 26 | 1 | 22 | 1 | 1 | 1 | 3,14 | Smith et al. (2003) | |
| | <i>Microtus pyrenaicus</i> | 41 | 1 | 39 | 1 | 9 | 1 | 13 | 1 | 0 | 0 | 3,04 | Giannoni et al. (1997) cf. <i>Microtus gerbei</i> | |
| | <i>Microtus subteraneus</i> | 42 | 1 | 51 | 1 | 30 | 1 | 19 | 1 | 0 | 0 | 3,00 | Smith et al. (2003) | |
| | <i>Clethrionomys glareolus</i> | 7 | 1 | 82 | 1 | 28 | 1 | 28 | 1 | 2 | 1 | 2,99 | Smith et al. (2003) | |
| | <i>Lemmus lemmus</i> | 0 | 0 | 1 | 1 | 1 | 1 | 0 | 0 | 0 | 0 | 3,51 | Smith et al. (2003) | |
| | <i>Dicrostonyx torquatus</i> | 0 | 0 | 0 | 0 | 2 | 1 | 0 | 0 | 0 | 0 | 3,86 | Smith et al. (2003) | |
| | <i>Pliomys episcopalus</i> | 1 | 1 | 0 | 0 | 0 | 0 | 0 | 0 | 0 | 0 | 4,08 | Legendre (1989) | |
| | <i>Pliomys lenki</i> | 4 | 1 | 26 | 1 | 22 | 1 | 11 | 1 | 0 | 0 | 3,70 | Legendre (1989) cf. <i>Pliomys</i> sp. | |
| | <i>Pliomys chalinei</i> | 0 | 0 | 0 | 0 | 1 | 1 | 0 | 0 | 0 | 0 | 3,89 | Legendre (1989) cf. average between <i>Pliomys</i> sp. / <i>Pliomys episcopalus</i> | |
| | <i>Arvicola terrestris</i> | 0 | 0 | 4 | 1 | 2 | 1 | 0 | 0 | 0 | 0 | 4,87 | Legendre (1989) | |
| | <i>Arvicola cantiana</i> | 7 | 1 | 33 | 1 | 15 | 1 | 3 | 1 | 0 | 0 | 5,18 | Freudenthal & Martin-Suárez (2013) | |
| | <i>Allocricetus bursae</i> | 32 | 1 | 146 | 1 | 165 | 1 | 4 | 1 | 0 | 0 | 3,47 | Legendre (1989) | |
| | <i>Apodemus sylvaticus</i> | 163 | 1 | 599 | 1 | 293 | 1 | 27 | 1 | 14 | 1 | 3,67 | Smith et al. (2003) | |
| | <i>Apodemus flavicollis</i> | 10 | 1 | 5 | 1 | 7 | 1 | 0 | 0 | 0 | 0 | 3,37 | Legendre (1989) | |
| | <i>Apodemus uralensis</i> | 36 | 1 | 47 | 1 | 21 | 1 | 12 | 1 | 0 | 0 | 3,62 | Freudenthal & Martin-Suárez (2013) | |
| | <i>Eliomys quercinus</i> | 44 | 1 | 202 | 1 | 400 | 1 | 27 | 1 | 10 | 1 | 4,38 | Legendre (1989) | |
| | <i>Muscardinus avellanarius</i> | 0 | 0 | 8 | 1 | 4 | 1 | 2 | 1 | 1 | 1 | 3,31 | Smith et al. (2003) | |
| | <i>Sciurus vulgaris</i> | 1 | 1 | 0 | 0 | 1 | 1 | 0 | 0 | 0 | 0 | 5,77 | Legendre (1989) | |
| | <i>Erinaceus europæus</i> | 0 | 0 | 0 | 0 | 3 | 1 | 0 | 0 | 0 | 0 | 7,08 | Legendre (1989) | |
| | <i>Erinaceus davidi</i> | 0 | 0 | 2 | 1 | 4 | 1 | 0 | 0 | 0 | 0 | 7,08 | Legendre (1989) cf. <i>Erinaceus europæus</i> | |
| | <i>Talpa europæa</i> | 4 | 1 | 10 | 1 | 9 | 1 | 5 | 1 | 1 | 1 | 4,34 | Smith et al. (2003) | |
| | <i>Talpa minor</i> | 0 | 0 | 1 | 1 | 0 | 0 | 0 | 0 | 0 | 0 | 4,09 | Freudenthal & Martin-Suárez (2013) cf. <i>Talpa occidentalis</i> | |
| | <i>Sorex araneus</i> | 3 | 1 | 7 | 1 | 6 | 1 | 5 | 1 | 0 | 0 | 2,12 | Legendre (1989) | |
| | <i>Sorex minutus</i> | 1 | 1 | 8 | 1 | 7 | 1 | 5 | 1 | 0 | 0 | 1,63 | Legendre (1989) | |
| | <i>Sorex minutissimus</i> | 2 | 1 | 6 | 1 | 1 | 1 | 0 | 0 | 0 | 0 | 1,63 | Legendre (1989) cf. <i>Sorex minutus</i> | |
| | <i>Crocodyrus russula</i> | 3 | 1 | 5 | 1 | 6 | 1 | 5 | 1 | 0 | 0 | 2,30 | Smith et al. (2003) | |
| <i>Crocodyrus leucodon</i> | 0 | 0 | 0 | 0 | 1 | 1 | 0 | 0 | 0 | 0 | 2,46 | Legendre (1989) | | |
| <i>Crocodyrus suaveolens</i> | 0 | 0 | 0 | 0 | 1 | 1 | 0 | 0 | 0 | 0 | 2,01 | Legendre (1989) | | |
| <i>Castor cf. fiber</i> | 0 | 0 | 0 | 0 | 1 | 1 | 0 | 0 | 0 | 0 | 9,85 | Smith et al. (2003) | | |
| <i>Oryzotylagus curvicolus</i> | 3 | 1 | 8 | 1 | 6 | 1 | 0 | 0 | 0 | 0 | 7,48 | Smith et al. (2003) | | |
| <i>Lepus europæus</i> | 4 | 1 | 3 | 1 | 5 | 1 | 2 | 1 | 0 | 0 | 8,23 | Smith et al. (2003) | | |
| <i>Lepus timidus</i> | 2 | 1 | 2 | 1 | 5 | 1 | 0 | 0 | 1 | 1 | 8,02 | Smith et al. (2003) | | |
| <i>Ochotona pusilla</i> | 3 | 1 | 9 | 1 | 7 | 1 | 1 | 1 | 0 | 0 | 6,00 | Freudenthal & Martin-Suárez (2013) | | |
| Chiroptera (n=14) | <i>Rhinolophus ferrumequinum</i> | 0 | 0 | 0 | 0 | 1 | 1 | 0 | 0 | 0 | 0 | 3,05 | Smith et al. (2003) | |
| | <i>Rhinolophus hipposideros</i> | 0 | 0 | 0 | 0 | 1 | 1 | 0 | 0 | 0 | 0 | 1,55 | Smith et al. (2003) | |
| | <i>Myotis myotis</i> | 1 | 1 | 1 | 1 | 3 | 1 | 2 | 1 | 1 | 1 | 3,12 | Smith et al. (2003) | |
| | <i>Myotis blythii</i> | 0 | 0 | 0 | 0 | 2 | 1 | 1 | 1 | 0 | 0 | 3,11 | Smith et al. (2003) | |
| | <i>Myotis capaccinii</i> | 0 | 0 | 1 | 1 | 1 | 1 | 0 | 0 | 0 | 0 | 2,25 | Electronic reference (1) | |
| | <i>Myotis mystacinus</i> | 0 | 0 | 0 | 0 | 2 | 1 | 0 | 0 | 0 | 0 | 1,79 | Electronic reference (2) | |
| | <i>Myotis bechsteinii</i> | 0 | 0 | 0 | 0 | 1 | 1 | 0 | 0 | 0 | 0 | 2,30 | Electronic reference (3) | |
| | <i>Vespertilio murinus</i> | 0 | 0 | 0 | 0 | 1 | 1 | 0 | 0 | 0 | 0 | 2,80 | Electronic reference (4) | |
| | <i>Eptesicus serotinus</i> | 0 | 0 | 0 | 0 | 1 | 1 | 0 | 0 | 0 | 0 | 3,28 | Electronic reference (5) | |
| | <i>Nyctalus noctula</i> | 0 | 0 | 0 | 0 | 1 | 1 | 0 | 0 | 0 | 0 | 3,43 | Electronic reference (6) | |
| | <i>Pipistrellus pipistrellus</i> | 1 | 1 | 1 | 1 | 2 | 1 | 1 | 1 | 0 | 0 | 1,70 | Electronic reference (7) | |
| | <i>Barbastella barbastellus</i> | 0 | 0 | 2 | 1 | 3 | 1 | 0 | 0 | 0 | 0 | 2,30 | Electronic reference (8) | |
| | <i>Plecotus auritus</i> | 0 | 0 | 1 | 1 | 5 | 1 | 2 | 1 | 1 | 1 | 2,30 | Electronic reference (9) | |
| | <i>Plecotus austriacus</i> | 0 | 0 | 0 | 0 | 3 | 1 | 1 | 1 | 0 | 0 | 2,30 | Electronic reference (10) | |
| | <i>Salomandra salamandra</i> | 0 | 0 | 2 | 1 | 4 | 1 | 0 | 0 | 0 | 0 | 2,95 | Sydlowski R. (2000) | |
| | <i>Triturus helveticus</i> | 0 | 0 | 0 | 0 | 0 | 0 | 2 | 1 | 0 | 0 | 1,10 | Harty et al. (2007) | |
| | <i>Bombina variegata</i> | 0 | 0 | 1 | 1 | 0 | 0 | 0 | 0 | 0 | 0 | 2,08 | Matz & Weber (1999) | |
| | <i>Pelobates fuscus</i> | 0 | 0 | 0 | 0 | 2 | 1 | 0 | 0 | 0 | 0 | 2,66 | Šukalo et al. (2014) | |
| | <i>Bufo bufo</i> | 2 | 1 | 2 | 1 | 6 | 1 | 1 | 1 | 1 | 1 | 4,25 | Electronic reference (11) | |
| | <i>Bufo calamita</i> | 4 | 1 | 7 | 1 | 6 | 1 | 0 | 0 | 0 | 0 | 4,32 | Electronic reference (12) | |
| | <i>Bufo viridis</i> | 0 | 0 | 3 | 1 | 0 | 0 | 0 | 0 | 0 | 0 | 3,44 | Castellano & Giacoma (1998) | |
| | <i>Hyla arborea</i> | 0 | 0 | 1 | 1 | 2 | 1 | 0 | 0 | 0 | 0 | 1,79 | Jacob (2007) | |
| | <i>Rana dalmatina</i> | 1 | 1 | 6 | 1 | 4 | 1 | 0 | 0 | 0 | 0 | 3,14 | Lodé (1993) | |
| | <i>Rana ridibunda</i> | 1 | 1 | 0 | 0 | 0 | 0 | 0 | 0 | 0 | 0 | 2,55 | Electronic reference (13) | |
| | <i>Rana temporaria</i> | 1 | 1 | 3 | 1 | 3 | 1 | 0 | 0 | 0 | 0 | 3,22 | Electronic reference (14) | |
| | Amphibians (n=11) | <i>Lacerta agilis</i> | 0 | 0 | 0 | 0 | 2 | 1 | 4 | 1 | 1 | 1 | 2,67 | Olsson (1993) |
| | | <i>Lacerta viridis</i> | 1 | 1 | 4 | 1 | 8 | 1 | 2 | 1 | 0 | 0 | 3,56 | Zucchi (2021) cf. <i>Lacerta bilineata</i> |
| | | <i>Podarcis cf muralis</i> | 0 | 0 | 2 | 1 | 3 | 1 | 3 | 1 | 0 | 0 | 2,20 | Electronic reference (15) |
| | | <i>Chalcides chalcides</i> | 0 | 0 | 0 | 0 | 2 | 1 | 0 | 0 | 0 | 0 | 0,12 | Bogaerts (2006) cf. <i>Chalcides lanzai</i> |
| | | <i>Anguis fragilis</i> | 2 | 1 | 7 | 1 | 8 | 1 | 6 | 1 | 1 | 1 | 3,81 | Electronic reference (16) |
| | | <i>Coluber viridiflavus</i> | 0 | 0 | 0 | 0 | 3 | 1 | 2 | 1 | 0 | 0 | 5,88 | Lelièvre (2010) cf. <i>Hierophis viridiflavus</i> |
| | | <i>Coronella austriaca</i> | 2 | 1 | 2 | 1 | 6 | 1 | 1 | 1 | 0 | 0 | 3,31 | Gralston & Jacob (2007) |
| <i>Coronella gironica</i> | | 0 | 0 | 1 | 1 | 6 | 1 | 1 | 1 | 0 | 0 | 3,28 | Stoetzel et al. (2010) | |
| <i>Elaphe longissima</i> | | 0 | 0 | 0 | 0 | 2 | 1 | 1 | 1 | 0 | 0 | 6,58 | Edgar & Bird (2006) cf. <i>Zamenis longissimus</i> | |
| <i>Rhinechis scalaris</i> | | 0 | 0 | 0 | 0 | 1 | 1 | 0 | 0 | 0 | 0 | 4,97 | Tur-Torres (2017-2018) | |
| <i>Malpolon monspessulanus</i> | | 1 | 1 | 1 | 1 | 2 | 1 | 1 | 1 | 0 | 0 | 8,01 | Mourgues (1908) | |
| <i>Natrix maura</i> | | 1 | 1 | 2 | 1 | 2 | 1 | 1 | 1 | 0 | 0 | 5,70 | Electronic reference (17) | |
| <i>Natrix natrix</i> | | 0 | 0 | 1 | 1 | 6 | 1 | 2 | 1 | 1 | 1 | 5,52 | Reading & Davies (1996) | |
| <i>Vipera aspis</i> | | 0 | 0 | 0 | 0 | 3 | 1 | 1 | 1 | 0 | 0 | 5,01 | Nauillevau (1983) | |
| <i>Vipera berus</i> | | 1 | 1 | 3 | 1 | 5 | 1 | 2 | 1 | 0 | 0 | 6,22 | Olsson et al. (1997) | |
| <i>Vipera ursinii</i> | | 0 | 0 | 0 | 0 | 3 | 1 | 2 | 1 | 0 | 0 | 4,95 | Baron (1997) | |
| Ungulata (n=10) | <i>Cervus elaphus</i> | 15 | 1 | 88 | 1 | 114 | 1 | 7 | 1 | 2 | 1 | 11,89 | Prado et al. (2004) | |
| | <i>Dama dama</i> | 0 | 0 | 4 | 1 | 14 | 1 | 0 | 0 | 0 | 0 | 11,32 | Prado et al. (2004) | |
| | <i>Capreolus capreolus</i> | 3 | 1 | 17 | 1 | 15 | 1 | 1 | 1 | 1 | 1 | 10,31 | Prado et al. (2004) | |
| | <i>Bison priscus cf. mediator</i> | 56 | 1 | 51 | 1 | 99 | 1 | 68 | 1 | 14 | 1 | 12,92 | Prado et al. (2004) cf. <i>Bison priscus</i> | |
| | <i>Equus cf. mosbachensis</i> | 11 | 1 | 30 | 1 | 39 | 1 | 7 | 1 | 3 | 1 | 12,93 | Prado et al. (2004) cf. <i>Equus stenonis</i> | |
| | <i>Hemitragus cedrensis</i> | 10 | 1 | 48 | 1 | 50 | 1 | 14 | 1 | 7 | 1 | 10,47 | Smith et al. (2003) cf. <i>Hemitragus jemlahicus</i> | |
| | <i>Palaeoloxodon antiquus</i> | 1 | 1 | 3 | 1 | 23 | 1 | 0 | 0 | 1 | 1 | 15,30 | Prado et al. (2004) | |
| | <i>Stephanorhinus cf. hemitocchus</i> | 0 | 0 | 7 | 1 | 8 | 1 | 0 | 0 | 0 | 0 | 14,90 | Prado et al. (2004) | |
| | <i>Rupicapra sp.</i> | 1 | 1 | 1 | 1 | 0 | 0 | 0 | 0 | 2 | 1 | 10,58 | Prado et al. (2004) cf. <i>Rupicapra rupicapra</i> | |
| | <i>Sus scrofa</i> | 0 | 0 | 1 | 1 | 1 | 1 | 2 | 1 | 0 | 0 | 11,35 | Prado et al. (2004) | |
| Carnivora (n=12) | <i>Canis lupus lupus</i> | 1 | 1 | 214 | 1 | 289 | 1 | 18 | 1 | 25 | 1 | 10,67 | Prado et al. (2004) | |
| | <i>Cuon alpinus</i> | 0 | 0 | 5 | 1 | 16 | 1 | 0 | 0 | 0 | 0 | 9,80 | Prado et al. (2004) | |
| | <i>Vulpes vulpes</i> | 2 | 1 | 9 | 1 | 9 | 1 | 1 | 1 | 0 | 0 | 8,90 | Prado et al. (2004) | |
| | <i>Felis silvestris</i> | 1 | 1 | 1 | 1 | 2 | 1 | 0 | 0 | 0 | 0 | 8,46 | Prado et al. (2004) | |
| | <i>Lynx lynx</i> | 0 | 0 | 7 | 1 | 2 | 1 | 6 | 1 | 3 | 1 | 10,04 | Prado et al. (2004) | |
| | <i>Panthera spelaea</i> | 0 | 0 | 56 | 1 | 96 | 1 | 2 | 1 | 5 | 1 | 12,17 | Prado et al. (2004) | |
| | <i>Ursus arctos</i> | 1 | 1 | 56 | 1 | 117 | 1 | 48 | 1 | 0 | 0 | 12,36 | Prado et al. (2004) | |
| | <i>Panthera pardus</i> | 0 | 0 | 1 | 1 | 2 | 1 | 0 | 0 | 0 | 0 | 10,78 | Prado et al. (2004) | |
| | <i>Mustela erminea</i> | 0 | 0 | 0 | 0 | 1 | 1 | 0 | 0 | 0 | 0 | 4,77 | Prado et al. (2004) cf. <i>Mustela palerminea</i> | |
| | <i>Mustela nivalis</i> | 10 | 1 | 6 | | | | | | | | | | |

3.2. Rarefaction, richness (S), Margalef (D), Shannon-Wiener (H') and the Sørensen-Dice index

In this study we used the rarefaction method that was popularized by Sanders (1968) for marine invertebrate communities and which has become a standard method. When applying Sanders's algorithm key assumptions (all met in Coudoulous I) are required such as a similar taxonomical rank between individuals collected from a similar place by using standardised procedures (Tipper, 1979). The brilliant idea of Sanders makes it possible to compare the number of species from different assemblages independently of the size of the initial samples and to see to what extent the sampling can induce a bias in the species richness (S) (i.e. area sampled, non-standardized sampling, catchability, etc.) (Raup, 1975; Tipper, 1979; Ricklefs & Miller, 1999; Gotelli & Colwell, 2001). Given the strong correlation between the number of identified specimens (NISP) and the minimum number of individuals (MNI) put forward by Grayson (1984) and later by Lyman (2008), rarefaction has been used in different paleobiological contexts, whether natural or anthropogenic (e.g. Adrain et al., 2000; Belmaker, 2006; Belmaker & Hovers, 2011; Popov & Marinska, 2007; Davis & Pyenson, 2007; Fernandez, 2009). In Coudoulous I we established rarefaction curves for each faunal unit from all the taxa present in the sequence and determined by the rank of the species ($S=102$). These curves were built with the "individual-based rarefaction" routine of the PAST program (Version 3.23) (Hammer et al., 2001; Hammer & Harper, 2006, see equations 6.10 to 6.13, p. 205).

In addition to rarefaction, we used species diversity which measures species richness combined with evenness, taking into account not only how many species are present but also how evenly distributed the numbers of each species are (see Eq. 3). It has been demonstrated that diversity varies consistently according to large-scale geographical areas with β and γ diversity (Rohde, 1992) but also in more restricted areas or habitats at a more local scale (α diversity, Whittaker, 1972). Thus, there are many different indices and mathematical solutions to account for the diversity that can be defined in many ways (Hammer et Harper, 2006). These authors indicate that only the number of individuals should be used to estimate the diversity of a community. Consequently, in nearly all paleobiological contexts diversity indices will always be an approximation because MNI will never be the real number of individuals. As a result of the foregoing and the fact that we used NISP, which is strongly correlated to MNI, we focused on the Shannon-Wiener diversity index (Shannon & Weaver, 1964) as it takes into account proportions for the frequency and it is completely adapted for local area (α , the within assemblage diversity). We would like to stress that this index is sometimes erroneously labelled as the "Shannon-Weaver" index (see Spellerberg & Fedor, 2003 for this confusion). The formula implemented in Past (Version 3.23) that we used is as follows:

$$\text{Eq. (3)} \quad H' = -\sum p_i \ln p_i$$

Where (\ln) is the logarithm to the base of e (sometimes in the literature base two is used), and where p_i is the pro-

portion of individuals that belong to species i .

Because species richness (S) increases with sample size, we used Margalef's species richness index (D) that attempts to compensate for this effect, as defined by the formula (Margalef, 1958):

$$\text{Eq. (4)} \quad D = (S-1) / \ln n$$

To go further in the analysis, we calculated the Sørensen-Dice index, which is a statistical indicator that measures the similarity between two samples and was developed independently in botany by Dice (1945) and Sørensen (1948). The Sørensen-Dice formula is as follows:

$$\text{Eq. (5)} \quad \text{Sørensen-Dice} = 2J / (A+B)$$

A and B represent the number of species in each sample and J the number of species common to the samples A and B. It is indexed from 0, a total absence of common elements, to 1 when two samples are identical (see Fig. 3). We do not go into further detail because the similarity coefficients are numerous and can only be explained by mathematical demonstrations (Shi, 1993). Comparing them to the most widely used such as Simpson's (1943) and Jaccard's coefficients (1912), here we have chosen to put more weight on matches than on mismatches due to the multiplication of J by a factor of two (see Eq. 5). Furthermore, the Sørensen-Dice coefficient normalizes with respect to the average rather than the total number of species in the two samples. Consequently, it is somewhat less sensitive to differences in sample size than Jaccard's index. The Sørensen-Dice index is also different from Simpson's coefficient, which is totally insensitive to the size of the larger sample and also does not take into account absences in the smaller sample of comparison (Hammer & Harper, 2006).

3.3. Body mass and cenograms

The cenograms was proposed by Valverde (1964, 1967) in order to compare body size of non carnivore modern terrestrial mammals from different communities. Given that the weight distributions of species are strongly dependent on their environmental conditions in predictable ways, Legendre (1986, 1989) and Gingerich (1989) extended the method into the fossil record to infer different paleoenvironmental characteristics as climatic changes, namely, humidity or aridity, and types of landscapes, mainly open or closed. Although the initial work of Legendre was controversial on quantitative aspects (see Rodríguez, 1999) other quaternary European paleoenvironmental studies have used the cenogram method (Montuire, 1994, 1999; Rodríguez et al., 1996; Montuire & Desclaux, 1997; Montuire & Marcolini, 2001; Valensi & Psathi, 2004; Hernández Fernández et al., 2006; Palombo & Giovinazzo, 2006; Fernandez, 2009). The initial graphic representation established by Legendre (1986) reports the body mass (\ln on the y-axis) according to the rank of the species (on the x-axis from the heaviest to the lightest). Schematically, the plots of points are represented by segments with different slopes (sometimes built by linear regression) and separated by breaks/gaps in the slope (see climatic trends in Fig. 4).

| Bioclimatic Components | Type of Climate | Dominant vegetal cover |
|------------------------|--------------------------------|-------------------------------------|
| I | Equatorial | Evergreen rainforest |
| II | Tropical with summer rains | Deciduous tropical forest |
| II/III | Transition tropical semiarid | Savannah |
| III | Subtropical arid | Sub-tropical desert |
| IV | Winter rain and summer drought | Mediterranean vegetation |
| V | Warm-temperate | Evergreen temperate forest |
| VI | Typical temperate | Deciduous forest |
| VII | Arid-temperate | Steppes and cold deserts |
| VIII | Cold-temperate (boreal) | Boreal coniferous forests and Taiga |
| IX | Arctic | Tundra |

Tab. 2 - Bioclimatic components (BC) according to their type of climate and vegetation cover (from Hernández-Fernández, 2001a, table 2.1).

Legendre's model (1986, 1989) and Gingerich (1989) who quantified the slopes, gaps and breakpoints, took into account small-sized (500 g<), medium-sized (500 g > 250 kg<) and large-sized mammals (> 250 kg) with two breakpoints around 8 kg and 250 kg. There is a gap (500 g - 8 kg) with greater (steeper) slope for medium-sized species in an open environment (e.g. woodlands and savannas) whereas closed environments have a continuous distribution. In a typical humid environment the breakpoint around 250 kg marks the low regression slope for medium-sized species, with no break for closed landscapes and a gap around 500 g for a more open environment. Gingerich (1989) hypothesized that the relative scarcity of mammals of about 500 g in this type of environment is probably related to the range of size, the density, and the diversity of insects and leaves, both of which are greatest in forests.

3.4. Predator Prey Ratio (PPR)

The PPR is simply the ratio between the number of predators and prey ($PPR = n \text{ species of predators} / n \text{ species of prey}$). For many Pleistocene sites, significant changes in PPR are difficult to interpret. Raia et al. (2007) found evidence for PPR inconstancy through time such as had been pointed out in previous studies (i.e. Van Valkenburgh & Janis, 1993). Here we assume an actualist approach whereby carnivores weighing up 21.5 kg feed mostly on prey that is 45% or less of their own mass (Carbone et al., 1999). Because carnivores above this limit feed mostly on prey that are greater than 45% of their own mass, we excluded from our calculation the mustelids of the sequence as well as *Meles meles*, *Vulpes vulpes* and *Felis silvestris*.

3.5. Bioclimatic analysis

A reconstruction of the climate and the plant environment has been inferred for each Coudoulous I faunal unit from the so-called "bioclimatic model" developed by Hernández-Fernández (2001a, 2001b) and Hernández-Fernández & Peláez-Campomanes (2003, 2005). It has been very recently used on archaeological sites from the Middle Pleistocene with human remains (Lopez-García et al., 2021), and adapted for insectivore and rodent communities from the Last Glacial Maximum to the Holocene (Royer et al., 2020). In the initial work of Hernández-Fernández (2001a, 2001b), 50 associations of present-day mammals were compiled in different latitudes and biotopes corresponding to 10 major bioclimatic components (BC) associated with different types of climates (Tab. 2). A typology adapted from previous

works (Walter, 1970; Rivas-Martínez, 1994) made it possible to systematically identify different environmental variables for each BC (e.g. type of vegetation, average annual temperatures, rain rate, thermal amplitude...).

Thus, each mammalian species is associated with a CRli (Climatic Restriction Index) value ranging from 0 to 1 which characterizes its climate dependence such that:

$$Eq. (6) \quad CRli = 1/n$$

With n the number of BCs where the species are represented and i the BC where the species appear. For the distribution of species by climatic types we used the work of Hernández-Fernández et al. (2007) and Jeannot (2010, 2021) for microfauna. For large mammals, and in rare cases their nearest living ecological analog species, we used the studies of Bhatnagar & Lovari (2008), Palombo (2015) and Lovari et al. (2016a, 2016b). For example, in Table 3, according to the data from Hernández-Fernández, (2001a, appendix 2), the CRli value is equal to 1 for *Ochotona pusilla*, in BC VII, which means that all elements of this species are exclusively associated with this Arid-temperate climate. On the other hand, the CRli of 0.33 for *Microtus oeconomus*, which is associated with bioclimatic components VI, VIII and IX, indicates that this species is more eurioic than the previous one. It is therefore possible to calculate for several mammalian species a probability of association (BC) for each of the 10 bioclimatic components according to the following formula:

$$Eq. (7) \quad BCi = (\sum CRli) * 100/S$$

(S) being the number of species present in the faunal association (or species richness).

Note also that the BCi value is equivalent to the cumulative rates of Andrews (1990) or to the % THI of Fernández-Jalvo et al. (1998). To end with our example, in Table 4, the highest probability BCi of the UF_{II} mammalian association corresponds to BC VI (Arid-temperate climate) with 36.45%, followed by BC VIII with a probability of 18.66%, and so on.

For each FU, we reported mammalian associations and their most likely BC (Tab. 4). To go deeper into the climate reconstructions, in this table we calculated some paleoclimatic proxies from the BCi values (Eq. 7) using the multiple linear regression coefficients from Hernández-Fernández (2001a, table 4.1 to 4.3). These indices and the parameters of their equations (b=intercept, a1 to a9=regression coefficients) are presented in the table 5 with the following

| FU _{II} mammalian association | Bioclimatic component | | | | | | | | | |
|---|-----------------------|----------------------------|------------------------------|------------------|--------------------------------|----------------|-------------------|----------------|-------------------------|-------------|
| | I | II | II/III | III | IV | V | VI | VII | VIII | IX |
| | Equatorial | Tropical with summer rains | Transition tropical semiarid | Subtropical arid | Winter rain and summer drought | Warm-temperate | Typical temperate | Arid-temperate | Cold-temperate (boreal) | Arctic |
| <i>Microtus arvalis</i> | - | - | - | - | - | - | 1,00 | - | - | - |
| <i>Microtus agrestis</i> | - | - | - | - | - | - | 0,50 | - | 0,50 | - |
| <i>Microtus gregalis</i> | - | - | - | - | - | - | 0,50 | - | 0,50 | - |
| <i>Microtus oeconomus</i> | - | - | - | - | - | - | 0,33 | - | 0,33 | 0,33 |
| <i>Chionomys nivalis</i> | - | - | - | - | - | - | 0,33 | - | 0,33 | 0,33 |
| <i>Microtus brecciensis</i> | - | - | - | - | - | 0,33 | 0,33 | 0,33 | - | - |
| <i>Microtus multiplex</i> | - | - | - | - | 0,20 | 0,20 | 0,20 | 0,20 | 0,20 | - |
| <i>Microtus pyrenaicus</i> | - | - | - | - | 0,20 | 0,20 | 0,20 | 0,20 | 0,20 | - |
| <i>Microtus subterraneus</i> | - | - | - | - | - | - | 1,00 | - | - | - |
| <i>Clethrionomys glareolus</i> | - | - | - | - | - | - | 0,50 | - | 0,50 | - |
| <i>Pliomys episcopalis</i> | - | - | - | 0,20 | 0,20 | - | 0,20 | 0,20 | 0,20 | - |
| <i>Pliomys lenki</i> | - | - | - | 0,20 | 0,20 | - | 0,20 | 0,20 | 0,20 | - |
| <i>Arvicola cantiana</i> | - | - | - | - | 0,20 | 0,20 | 0,20 | 0,20 | 0,20 | - |
| <i>Allocrietus bursæ</i> | - | - | - | - | 0,20 | 0,20 | 0,20 | 0,20 | 0,20 | - |
| <i>Apodemus sylvaticus</i> | - | - | - | - | 0,50 | - | 0,50 | - | - | - |
| <i>Apodemus flavicollis</i> | - | - | - | - | - | - | 1,00 | - | - | - |
| <i>Apodemus uralensis</i> | - | - | - | - | - | - | 0,33 | 0,33 | 0,33 | - |
| <i>Eliomys quercinus</i> | - | - | - | - | 0,50 | - | 0,50 | - | - | - |
| <i>Sciurus vulgaris</i> | - | - | - | - | 0,33 | - | 0,33 | - | 0,33 | - |
| <i>Talpa europæa</i> | - | - | - | - | - | - | 1,00 | - | - | - |
| <i>Sorex araneus</i> | - | - | - | - | - | - | 0,50 | - | 0,50 | - |
| <i>Sorex minutus</i> | - | - | - | - | 0,20 | - | 0,20 | 0,20 | 0,20 | 0,20 |
| <i>Sorex minutissimus</i> | - | - | - | - | - | - | - | - | 1,00 | - |
| <i>Crocodyrus russula</i> | - | - | - | - | 0,50 | - | 0,50 | - | - | - |
| <i>Oryctolagus cuniculus</i> | - | - | - | - | 1,00 | - | - | - | - | - |
| <i>Lepus europæus</i> | - | - | - | - | - | - | 1,00 | - | - | - |
| <i>Lepus timidus</i> | - | - | - | - | - | - | - | - | 0,50 | 0,50 |
| <i>Ochotona pusilla</i> | - | - | - | - | - | - | - | 1,00 | - | - |
| <i>Myotis myotis</i> | - | - | - | - | 0,50 | - | 0,50 | - | - | - |
| <i>Pipistrellus pipistrellus</i> | - | - | - | - | 0,33 | - | 0,33 | 0,33 | - | - |
| <i>Cervus elaphus</i> | - | - | - | - | 0,33 | - | 0,33 | 0,33 | - | - |
| <i>Capreolus capreolus</i> | - | - | - | - | 0,50 | - | 0,50 | - | - | - |
| <i>Bison priscus cf. mediator</i> | - | - | - | - | - | 0,25 | 0,25 | 0,25 | 0,25 | - |
| <i>Equus cf. mosbachensis</i> | - | - | - | - | - | 0,25 | 0,25 | 0,25 | 0,25 | - |
| <i>Hemitragus cedrensis</i> | - | - | - | - | 0,20 | 0,20 | 0,20 | 0,20 | 0,20 | - |
| <i>Palaeoloxodon antiquus</i> | - | - | - | - | - | 0,33 | 0,33 | 0,33 | - | - |
| <i>Rupicapra sp.</i> | - | - | - | - | 0,20 | 0,20 | 0,20 | 0,20 | 0,20 | - |
| <i>Canis lupus lunellensis</i> | - | 0,11 | 0,11 | 0,11 | 0,11 | 0,11 | 0,11 | 0,11 | 0,11 | 0,11 |
| <i>Vulpes vulpes</i> | - | - | - | 0,14 | 0,14 | 0,14 | 0,14 | 0,14 | 0,14 | 0,14 |
| <i>Felis silvestris</i> | - | 0,14 | 0,14 | 0,14 | 0,14 | 0,14 | 0,14 | 0,14 | - | - |
| <i>Ursus arctos</i> | - | - | - | - | 0,25 | - | 0,25 | 0,25 | 0,25 | - |
| <i>Mustela nivalis</i> | - | - | - | - | 0,20 | - | 0,20 | 0,20 | 0,20 | 0,20 |
| ΣCRIi (Climatic Restriction Index) | 0,00 | 0,25 | 0,25 | 0,80 | 7,15 | 2,76 | 15,31 | 5,81 | 7,84 | 1,82 |
| BCi=(ΣCRIi)*100/S | 0,00 | 0,60 | 0,60 | 1,90 | 17,01 | 6,57 | 36,45 | 13,83 | 18,66 | 4,33 |
| S=42 (n species) | | | | | | | | | | |

Tab. 3 - Distribution of the mammalian species identified in FU_{II} according to their Climatic Restriction Index (CRIi, see detailed Eq. 6 in text) and Bioclimatic Component (BCi, see detailed Eq. 7 in text) in accordance with Hernández-Fernández (2001a) for the CRIi.

components:

- Mean Annual Temperature (°C) (MAT).
- Mean Annual Thermal Amplitude (°C) (MATA). This expresses the difference (°C) between the mean temperature of the warmest month and that of the coldest month of the year. According Rivas-Martínez (1994), it is an index of continentality simple.
- Annual Positive Temperatures Index (APTI). This provides a measure of the intensity of the summer heat.
- Compensated Thermal Index (CTI). In extratropical zones, the CTI is designed to equilibrate the cold "excess" that

occurs during winter in the continental climates (average temperature of the coldest month of the year minimum), or the excessively mild winter in the marked oceanic territories, so that these index values can be significantly compared (Rivas-Martínez et al., 2011).

- Mean Annual Precipitation (mm) (MAP)
- Mean Temperatures of the Coldest Month (°C) (MTCM)
- Aridity Index (AI). We calculated this index from De Martonne (1926) which is still used with good results (Pellicone et al., 2019). It is simply the ratio between the mean annual precipitation (mm) (MAP) and the mean annual temperature (°C) (MAT) weighted by 10 such that: (AI) = MAP / MAT +

| FUs | S | Associated probabilities for Bioclimatic Component (BC) | | | Paleoclimatic proxies | | | | | | |
|--------------------|----|---|-----------------|-----------------|-----------------------|-----------|---------|-------|----------|-----------|-------|
| | | Probability 1 | Probability 2 | Probability 3 | MAT (C°) | MATA (C°) | APTI | CTI | MAP (mm) | MTCM (°C) | AI |
| FU _{II} | 42 | 36.45 (BC VI) | 18.66 (BC VIII) | 17.01 (BC IV) | 6.88 | 22.73 | 997.52 | 44.04 | 1008.05 | -5.64 | 59.69 |
| FU _{III} | 56 | 36.38 (BC VI) | 20.03 (BC IV) | 15.39 (BC VIII) | 8.49 | 20.87 | 1113.67 | 86.81 | 1042.09 | -2.28 | 56.34 |
| FU _{IV+V} | 73 | 35.03 (BC VI) | 20.77 (BC IV) | 14.52 (BC VII) | 8.38 | 20.70 | 1110.44 | 80.02 | 972.20 | -2.18 | 52.89 |
| FU _{VI} | 41 | 38.64 (BC VI) | 16.29 (BC VII) | 15.89 (BC IV) | 7.65 | 21.65 | 1010.51 | 59.16 | 1085.35 | -4.24 | 61.46 |
| FU _{VII} | 25 | 46.12 (BC VI) | 16.80 (BC VIII) | 14.80 (BC IV) | 7.29 | 20.16 | 908.21 | 35.14 | 1236.79 | -3.18 | 71.50 |

Tab. 4 - Coudoulous I faunal units and their probabilities (P1 to P3) of association with a Bioclimatic Component (see Table 2 for BC description). (S), species richness (excluding reptiles and amphibians). Paleoclimatic proxies with Mean Average T° (MAT), Mean Annual Thermal Amplitude (MATA), Annual Positive Temperatures Index (APTI), Compensated Thermal Index (CTI), Mean Annual Precipitations (MAP), Mean Temperatures of the Coldest Month (MTCM), Aridity Index (AI) (see text for details). Calculation for some paleoclimatic proxies from multiple linear regression coefficients provided in table 5.

10. This index should be read carefully because the higher the AI, the lower the aridity.

4. RESULTS AND DISCUSSION

4.1. Sample quality

In Coudoulous I, *CI* indicates a low-quality sample for FU_{II} (52.88) and FU_{VII} (28.43) whereas *CI*_{bda} corresponds to a very slightly modified sample in FU_{III}, FU_{IV+V} and FU_{VI} respectively with 81.25, 91.66 and 92.85 (Tab. 1). An index value higher than 70 usually reflects very little disturbance in a faunal unit interval (Maas et al., 1995; Palombo et al., 2008). Biases are often related to lower values in shorter chronological intervals, which is clearly the case in FU_{VII} with only one archaeological level (8d). The *CI* of this faunal unit (28.43) reflects the lowest quality sample in the whole sequence. On the other hand, the overlying FU_{VI} shows a very high *CI*_{bda} index (92.85). FU_{IV+V} (*CI*_{bda}=91.66) and FU_{III} (*CI*_{bda}=81.25) also both indicate very good quality samples mainly associated to the subdivisions of level 7, probably contemporary with MIS 7, which is supported by biomarkers (mammal species and/or evolutive stage) and absolute dates (e.g. Jaubert et al., 2005, 2013; Boudadi-Maligne, 2010; Hernandez et al., 2015). Finally, in the most recent FU_{II} *CI*=52.88 indicates a poor-quality sample. This faunal unit, beneath level 4, is related to the first part of MIS 6 (Jaubert et al., 2005; Hernandez et al., 2015), a glacial period known for involving dramatic drops in temperature (Mokeddem & McManus, 2016). The relatively low species richness of this faunal unit might coincide with this climate cooling.

4.2. Diversity (*s.l.*)

In Coudoulous I, rarefaction curves illustrate the expected number of species whatever the initial sample size in each faunal unit (Fig. 3). The number of rarefied species in FU_{IV+V} is higher than in the lower FU_{III}, FU_{VI}, FU_{II} and FU_{VII}, respectively. In the same way the decreasing values of the

Margalef index (*D*) are totally in line with the rarefaction curves. Although the calculations are quite different, both rarefaction and the Margalef index (*D*) reach the same result. The latter also compensates for the sample size effect by dividing the number of species in a sample by the natural log of the number of individuals (see Eq. 4). Furthermore, the curve from FU_{VII} does not reach the asymptotic plateau, indicating a significant bias in this sample (lowest *CI*), also shown by the weakness of the NISP and the species richness (NISP=118 and S=29) which correspond to the single archaeological level 8d.

Interestingly enough, the species-rich communities may have a greater number of trophic levels than species-poor communities (Briand, 1983). It is in light of this evidence that Yachi & Loreau (1999) formulated the “insurance hypothesis” stating that high species richness increases community stability with species that respond differently to environmental fluctuations (see also Ives et al., 2000). If we accept this hypothesis, the rarefaction curves associated with the highest Margalef indices could be good indicators of a stable community in Coudoulous I (respectively FU_{IV+V}, FU_{III}, FU_{VI}, FU_{II}, FU_{VII}).

In Figure 3, the Shannon-Wiener diversity index (*H'*) values are almost correlated to the species richness (*S*) and Margalef's values (*D*). Nevertheless, in FU_{VII} the diversity is higher with *H'*=2.77 whereas the number of species is much less important (*n*=29) than in FU_{II} (*n*=53) which has the lowest diversity *H'*=2.06. It means that independently of both species richness and the lowest *CI* (discussed above), the Shannon-Wiener index is very sensitive to the individual distribution frequency among species in FU_{VII}.

In all faunal units the *H'* values are comprised between 2.06 and 3.08. It is difficult to compare these values with other sites, knowing that diversity is strongly dependant on multiple local factors (e.g. climate, taxonomical groups, ecosystem involved, etc.). Nevertheless, it is now widely accepted that high species diversity indicates a highly complex

| | b | a1 | a2 | a3 | a4 | a5 | a6 | a7 | a8 | a9 |
|--|----------|--------|---------|--------|--------|---------|---------|---------|---------|---------|
| Mean Annual Temperature °C (MAT) | 24.296 | 0.159 | -0.103 | 0.032 | -0.038 | -0.145 | -0.11 | -0.217 | -0.372 | -0.451 |
| Mean Annual Thermal Amplitude °C (MATA) | -2.02 | 0.072 | 0.171 | 0.058 | 0.203 | 0.218 | 0.008 | 0.456 | 0.659 | 0.165 |
| Annual Positive Temperatures Index (APTI) | 2920.208 | 18.761 | -12.514 | 2.845 | -5.054 | -14.783 | -21.896 | -21.833 | -26.537 | -35.444 |
| Compensated Thermal Index (CTI) | 655.351 | 4.591 | -4.331 | 0.434 | -1.831 | -4.425 | -5.719 | -6.958 | -9.651 | -15.534 |
| Mean Annual Precipitation (mm) (MAP) (mm) | 3240.41 | 19.416 | 37.247 | 37.435 | 38.442 | 7.015 | 5.144 | 32.647 | 35.223 | 30.164 |
| Mean Temperatures of the Coldest Month (°C) (MTCM) | 26.441 | 0.153 | -0.243 | 0.081 | -0.044 | -0.371 | -0.068 | -0.586 | -0.853 | -0.578 |
| Aridity Index (AI) = MAP/MAT+10 | | | | | | | | | | |

Tab. 5 - Paleoclimatic proxies with equation parameters (b=intercept, a1 to a9 = regression coefficients) from Hernández-Fernández (2001a, table 4.1 to 4.3) (see details in text).

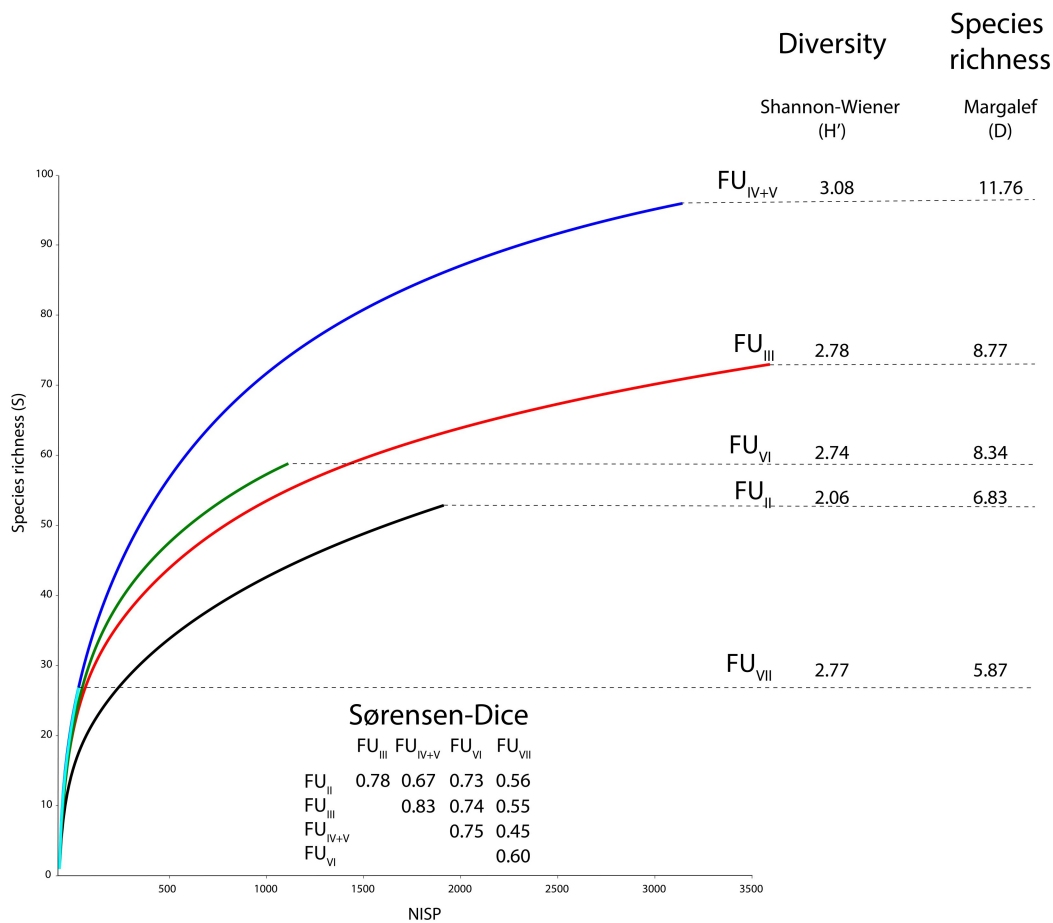


Fig. 3 - Rarefaction curves, Shannon-Wiener diversity (H'), Margalef species richness (D) and Sørensen-Dice similarity for each faunal unit (FU_{II} to FU_{VII}). NISP in Table 1 is used for calculation with Past 3.23, (Hammer et al., 2001). For rarefaction see details in text for “individual-based rarefaction” routine from PAST. For calculation of Shannon-Wiener (H') see Eq. 3, for Margalef species richness (D) see Eq. 4 and for Sørensen-Dice similarity see Eq. 5 and Table 1.

community with more species interactions (Whittaker, 1972). It is worth noting that in nature, whatever the taxonomic group studied, H' often ranges between 1.5 and 3.5 according to Gaines et al. (1999).

Another important consideration that should be emphasized is that H' as well as D are completely independent of the temporal gradient in the different FUs whereas the Sørensen-Dice index almost always shows a greater similarity between the closest FUs through time. In other words, the more distant the FUs are, the less species they have in common. This should not be considered as a statistical artefact but most likely as a gradual turnover of species through time, probably due to paleoenvironmental changes.

In southern Africa, Andrews & O'Brien (2000), combining 15 climatic variables with current mammal species ($n=285$), showed that woody plant species ($n=1359$) alone explained 75% of the variability in mammal species richness. Nevertheless, large mammals over 90 kg, scansorial, aquatic or fossorial mammals were not significantly correlated with woody plant species richness, unlike small-bodied arboreal frugivores and insectivores.

This led us to test which species were most affected by possible climate and plant cover changes in the different faunal units of Coudoulous I. Therefore, we tested the proportions of species throughout the sequence according to their size (microfauna vs macrofauna) and their diet (herbivores vs carnivores). The results of the χ^2 test indicate no significant differences between microfauna and macrofauna between the FUs. The same is true for the proportion of herbivores and carnivores (Table 6-a to 6-d).

One possible explanation for these results is that regardless of the different types of climate in a small sampling area (e.g. within habitat), there is no significant difference between the richness of small and large size species within animal communities (Brown and Nicoletto, 1991). At larger spatial scales, the pattern is quite different with small species generally far exceeding the number of large species (Bakker & Kelt, 2000).

4.3. Cenograms

The cenograms in Figure 4 illustrate the difference in total species richness (S) between the FUs as a function of their body mass (y -axis): the higher the rank, the lightest

| a) Species richness (S) for microfauna and macrofauna in FUs | | | |
|--|----------------|----------------|-----------|
| Faunal Units (FUs) | Microfauna (S) | Macrofauna (S) | Total (S) |
| II | 41 | 12 | 53 |
| III | 52 | 21 | 73 |
| IV+V | 75 | 21 | 96 |
| VI | 44 | 13 | 57 |
| VII | 18 | 11 | 29 |

| b) Chi ² Test between species richness (microfauna vs macrofauna) in FUs | |
|---|-------|
| Chi ² (Observed value) | 3.891 |
| Chi ² (Critical value) | 9.488 |
| DDL | 4 |
| p-value | 0.421 |
| alpha | 0.05 |

| c) Species richness (S) for herbivores and carnivores in FUs | | | |
|--|----------|----------------|-----------|
| Faunal Units (FUs) | Prey (S) | Carnivores (S) | Total (S) |
| II | 7 | 5 | 12 |
| III | 10 | 11 | 21 |
| IV+V | 9 | 13 | 22 |
| VI | 6 | 7 | 13 |
| VII | 7 | 4 | 11 |

| d) Chi ² Test between species richness (herbivores vs carnivores) in FUs | |
|---|-------|
| Chi ² (Observed value) | 1.705 |
| Chi ² (Critical value) | 9.488 |
| DDL | 4 |
| p-value | 0.790 |
| alpha | 0.05 |

Tab. 6 - a) Species richness (S) for microfauna and macrofauna in faunal units of Coudoulous I ; b) Chi² Test between species richness (microfauna vs macrofauna) in FUs; c) Species richness (S) for herbivores and carnivores in FUs; d) Chi² Test between species richness (herbivores vs carnivores) in FUs.

the species (x-axis). In all FUs, a very clear break in slopes for species around 100 g can be observed, which has already started at about the limit of 500 g. Medium-sized species (500 g to 250 kg without carnivores) are less represented in all faunal units except in FU_{IV+V}. Finally, the large-sized species (more than 250 kg) are scarce. According Legendre's method, there are two general trends in Coudoulous I: either an open-arid landscape simultaneous with a decrease in small mammals as well as the total species richness (e.g. FU_{VII}), or closed-arid landscapes with an increase in small mammals and highest species richness with possibly more humid climate trend (e.g. FU_{IV+V}). These two opposing profiles should help inform our reading of the evolution of landscapes. For example, FU_{VII} fits well with the results of Gingerich (1989) for open-arid environments. In these typical landscapes, the slope of the cenograms is more pronounced with a larger gap around the limit of 500 g, a scarcity of medium-sized species (500 g to 250 kg) and finally the lowest total species richness. Nevertheless, there are inconsistencies between the general shape of these two opposing cenograms and some paleoclimatic proxies such as MAP and AI (counterintuitively the higher the AI, the lower the aridity) (Tab. 4). Indeed, the latter show a more arid climatic trend in FU_{IV+V} (AI=52.89 MAP = 972.20 mm) than in FU_{VII} (AI=71.50 and MAP = 1236.79 mm). Furthermore, the range of values provided by De Martonne (1926) and reworked by Pellicone et al. (2019) for AI < 50 indicates a humid climate. The results obtained with the paleoclimatic proxies and the cenograms do not invalidate each other. However, they seem to indicate a wetter climate trend than the theoretical pattern of the model suggests, with more pronounced humidity in FU_{VII}

than in FU_{IV+V}. Furthermore, we have to keep in mind that AI is a continuous complex gradient difficult to interpret, which spans several biomes (e.g. from tropical rainforest to tropical deciduous woodland, to savanna, to desert) (Hernández-Fernández et al., 2006).

Gómez Cano et al. (2006) have shown that cenogram analyses work well with a random species loss of up to 60-70% in a fossil assemblage. The unequal sizes of the samples and the possible biases in representation of the species led us to calculate a confidence interval for the body mass of predators (excluding mustelids, *M. meles*, *V. vulpes* and *F. silvestris*), their prey (ungulates) and small mammals in each FU (Table 7-a). The bootstrap percentiles interval function in R (Version 3.2.1) makes it possible to provide the mean and the 2.5% and 97.5% percentile of the bootstrap distribution as confidence intervals (see details in Efron & Tibshirani, 1993). The predators, their prey and the small mammals showed relatively similar body mass confidence intervals in the different FUs (Table 7-a). To investigate this further we undertook a Kruskal-Wallis analysis, using the multiple pairwise comparisons option (XLSTAT Version 2017.1.1) to detect possible significant changes in their body mass (Table 7-b). Our results are mainly consistent with previous observations about a stable community over time. Only the body mass values for small mammals from FU_{VII} and FU_{VI} are statistically different and should be explored to distinguish between evolutionary aspects (ecomorphology) or more likely sampling bias (s.l.) as discussed for FU_{VII}.

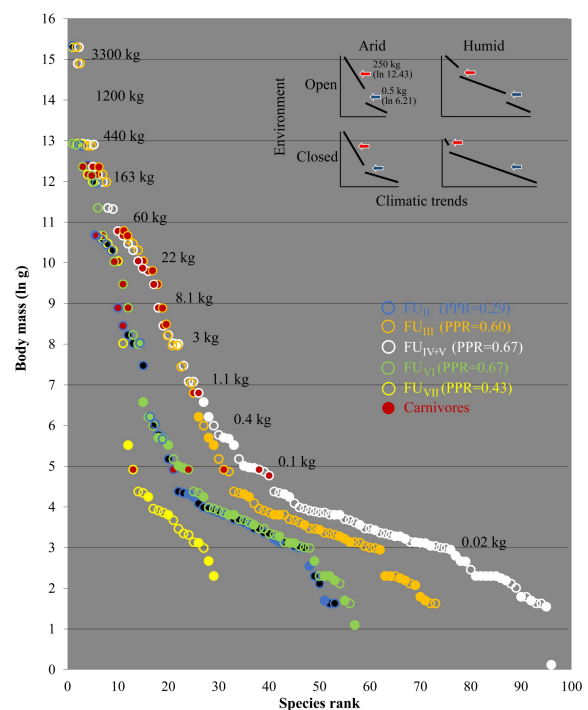


Fig. 4 - Cenograms according to the body mass (in g) for each faunal unit (FU_{II} to FU_{VII}) in Coudoulous I. For predator prey ratio (PPR = n predator / n prey) see details in text. Filled circles for bats, reptiles and amphibians. Red filled circles for carnivores.

| a) Body mass (kg) bootstrap confidence interval calculated for prey, predators and small mammals | | | | | |
|---|------------------|------------------|------------------|------------------|------------------|
| Faunal units | II | III | IV+V | VI | VII |
| Prey animals | [59.04 - 578.38] | [73.86 - 598.39] | [75.28 - 512.98] | [67.37 - 683.51] | [59.27 - 686.25] |
| Predators | [43.00 - 233.51] | [27.18 - 127.00] | [26.56 - 131.09] | [31.44 - 212.35] | [22.99 - 193.10] |
| Small mammals | [0.036 - 0.098] | [0.033 - 0.078] | [0.030 - 0.066] | [0.031 - 0.070] | [0.032 - 0.091] |
| b) Kruskal-Wallis test of body mass for prey, predators and small mammals in all faunal units | | | | | |
| prey : | | | | | |
| Faunal units | II | III | IV+V | VI | VII |
| II | - | 0.995 | 0.874 | 0.980 | 1 |
| III | 0.995 | - | 0.997 | 0.985 | 0.995 |
| IV+V | 0.874 | 0.997 | - | 0.829 | 0.874 |
| VI | 0.980 | 0.985 | 0.829 | - | 0.980 |
| VII | 1 | 0.995 | 0.874 | 0.98 | - |
| predators : | | | | | |
| Faunal units | II | III | IV+V | VI | VII |
| II | - | 0.864 | 0.864 | 0.897 | 0.521 |
| III | 0.864 | - | 1 | 0.980 | 0.994 |
| IV+V | 0.864 | 1 | - | 0.980 | 0.994 |
| VI | 0.897 | 0.980 | 0.980 | - | 0.900 |
| VII | 0.521 | 0.994 | 0.994 | 0.900 | - |
| small mammals : | | | | | |
| Faunal units | II | III | IV+V | VI | VII |
| II | - | 0.995 | 0.912 | 0.412 | 0.999 |
| III | 0.995 | - | 0.971 | 0.631 | 0.887 |
| IV+V | 0.912 | 0.971 | - | 1.000 | 0.068 |
| VI | 0.412 | 0.631 | 1.000 | - | < 0.0001 |
| VII | 0.999 | 0.887 | 0.068 | < 0.0001 | - |

Tab. 7 - a) Body mass (kg) bootstrap confidence interval distribution (95%) for prey (ungulates), predators (excluding all mustelids, *Meles meles*, *Vulpes vulpes*, *Felis silvestris*) and small mammals in FUs (calculation with the bootstrap percentiles interval function in R, Version 3.2.1). b) Kruskal-Wallis test for comparing the body mass (kg) of prey (ungulates), predators (excluding all mustelids, *Meles meles*, *Vulpes vulpes*, *Felis silvestris*) and small mammals in all FUs (Calculation from XLSTAT Version 2017.1.1, using multiple pairwise comparisons option for the recalculation of the ranks for each two-by-two combination of the samples, < 0.0001 is highly significant).

4.4. Predation

In present-day ecosystems, terrestrial carnivores are much rarer than most of their prey due to the competition with predators of similar sizes to avoid the overconsumption of the resources on which they depend (Peters & Wassenberg, 1983; Hatton et al., 2015). As expected, the PPR calculated in all of the FUs are always lower than 1 (Fig. 4). They are relatively stable in the sequence at around 0.6, with the exception of FU_{VII} (PPR = 0.43) and FU_{II} (PPR = 0.29). On a longer time scale, PPR ratio seems to be very dependent on the renewal of the Plio-Pleistocene fauna with the arrival or the extinction of certain predators (Raia et al., 2007; Croitor & Brugal, 2010). For now, it is difficult to infer predators-prey interactions including man in Coudoulous I except that the greater PPR, the more important the CI in each FU.

4.5. Bioclimatic analysis

In Coudoulous I, the mean annual temperatures (MAT) in the different faunal units are relatively similar to those established on the exclusive basis of the microfauna by Jeannet (2021) (Tab. 4). Nevertheless, MAT alone does not permit the distinction between bioclimatic components, except in the case of very different ecozones (Rivas-Martínez et al., 1999). This is not the case with the mean annual thermal amplitude (MATA or IC in Rivas-Martínez et al., 1999) that constitutes an excellent indicator of continentality. The MATA values recorded in FU_{VII}, FU_{IV+V} and FU_{III} correspond to a semi-continental climate (IC 18 to 21 in Rivas-Martínez et al., 1999, p. 8) and to a sub-continental climate in FU_{VI} and FU_{II} (IC 21 to 28 according to the same authors). In both cases the winters were harsh and the summers hot and rainy. The

annual positive temperature index (APTI) calculated at Coudoulous I indicates that the APTI values are all between around 900 and 1100 and correspond to the interval of the sub-Mediterranean temperate bioclimatic variant (800 < APTI < 1400, see Rivas-Martínez et al., 1999). Likewise, the compensated thermal indices of Coudoulous I all have values less than 180 which is consistent with this type of climate (see CTI in Rivas-Martínez et al., 2004). Finally, the most significant result concerns the faunal units, whose highest probabilities are all associated with the bioclimatic component VI, which corresponds to a typically temperate climate (Tab. 4). The vegetation cover of BC VI consists of a nemoral zone dominated by deciduous forests with broad-leaf trees (e.g. maple, oak, hickory, beech, chestnut) with several different kinds of plants like mountain laurel, azaleas and mosses. The bryophyte stratum and terrestrial lichens as well as various dwarf plants are very developed, while there are few herbaceous plants. Nevertheless, a poorly diversified or even mono-specific cover cannot be excluded in this type of environment (Hernández-Fernández, 2001a). This kind of vegetation cover is potentially located between the Boreal zone (coniferous forests) and the Mediterranean zone (sclerophyllous forests).

In Table 4, FU_{II} and FU_{VII}, are both associated with BC VIII as second probabilities, with cold Boreal type climate elements. These results completely match the paleoenvironmental conclusions of Jeannet (2021) which indicate much more severe climatic conditions in FU_{II} and FU_{VII}. FU_{II} could be related to MIS 6 with climatic degradation as mentioned previously, and FU_{VII} to a cooler phase of MIS 7 or older (MIS 8?). The existence of large ice caps at the North

Pole during ice ages, in conjunction with the Scandinavian anticyclone weather systems, likely generated continental surface winds coming from the East, and caused a decrease in precipitation in Eurasia (COHMAP, 1988). For example, in France during these colder periods, there is a decrease in precipitation (down to a minimum of 600 mm during the Würm), unlike the hottest interglacial periods where precipitation can reach 1200 mm during the Eemian (Hernández-Fernández, 2001a). While it is very likely (Probability 1 and 2) that FU_{II}, FU_{VII} show climatic affinities with continental elements, the combination of aridity (AI) and rainfall pattern (MAP) related with thermal indices (MAT, MTCM, APTI) seems to exclude a typical boreal climate in these faunal units, even in its mildest variant (*sensu* Rivas-Martínez et al., 1999, 2004) (see Tab. 4).

However, in all of the FUs of Coudoulous I the association of some species present today but in environments with very different environmental characteristics raises the question of their ecological plasticity and their contemporaneity. As an example, in FU_{IV+V} we note the presence of *Dicrostonyx torquatus* and *Sorex minutissimus* which live today in very severe climatic conditions, unlike *Oryctolagus cuniculus* or to a lesser extent *Microtus arvalis*, which are generally associated with a much warmer climate. During the Late Pleistocene, the association of *D. torquatus* and *M. arvalis* is not uncommon in southwestern France and reflects the ecological adaptation of some taxa that evolved in very specific biomes (Royer et al., 2016). This kind of association is part of the “disharmonious communities” of animals and plants adapted to a climate that has no modern counterpart (Huggett, 2004). It could be explained by refuge areas forming a mosaic of settlements of small populations dispersed in several habitats, known as the “patch-corridor-matrix model”, allowing their survival and cohabitation (Huggett & Cheesman, 2002). Regardless of the potential for climate adaptation of species and the plasticity of their ecological niche in the Pleistocene, there is no doubt that the temporal resolution of the faunal units of Coudoulous I corresponds to a grouping of different temporal phases.

5. CONCLUSION

In current ecological studies, species richness has been demonstrated to vary consistently with large-scale geographical factors such as latitude and altitude. The sequence of Coudoulous I allows us to follow an entire animal community and its relationship to paleoenvironmental changes through time at a local scale.

First of all, it appears that FU_{II} and FU_{VII} are different from the other faunal units, with their low-quality samples, unbalanced and low PPR and the lowest species richness values. FU_{II}, which is the most recent faunal unit, may belong to the first part of MIS 6, with new paleoenvironmental conditions. FU_{VII} is the oldest faunal association and is very well individualized as it is composed of a single level (8d) that may correspond to a cooler phase of MIS 7 or older (MIS 8?). FU_{VII} has the lowest species richness and above all an extremely disturbed assemblage as identified by the completeness index (*C*). Nevertheless, FU_{VII} has a greater diversity

than FU_{II} which provides a much larger number of species. This shows that the Shannon-Wiener (*H'*) performs well and is very sensitive to the individual distribution frequency even if there is a great imbalance of the species richness between samples.

In the rest of the sequence, the faunal associations FU_{III} to FU_{VI} show both greater diversity and species richness, thus indicating a greater number of trophic levels and a more stable community. The concept of the “insurance hypothesis”, which states that the greater the species richness, the more important are the interactions between species, is supported by the rarefaction curves that are systematically in line with Margalef (*D*). The number of species, according to their body mass and their diet, displays no significant differences between all the FUs, as is usual in a small sampling area (e.g. within habitat). In addition, the Sørensen-Dice index almost always indicates a greater similarity of common species between the closest FUs throughout the sequence. This reveals a gradual turnover of species through time, probably due to paleoenvironmental changes.

The predators, their prey and the small mammals showed no significant changes in their body mass through time, with the exception of the small mammals between FU_{VII} and FU_{VI}, which probably indicates the same pattern of evolution throughout the sequence. We showed clearly for FU_{II} and FU_{VII} that the lower the completeness index, the lower the PPR. This ratio is practically the same in the rest of the sequence but difficult to interpret from the small number of predators and their prey.

Theoretically, body mass distribution analysis in the cenograms should be efficient with a random species loss of up to 60-70% in a fossil assemblage. We established the cenograms in the different FUs and found them consistent with the pattern of a temperate climate corresponding to the bioclimatic component VI. According to their theoretical slopes, breakpoints and species richness we identified two general trends corresponding to an open-arid and more closed-arid climate. Nevertheless, a cross reading with paleoclimatic proxies revealed a wetter climate trend than the theoretical pattern arid-open landscape suggests.

In addition to the cenograms, the bioclimatic model based on transfer functions from current mammalian associations clearly showed that the paleoecological requirements of Coudoulous I species were very similar between the different faunal units. While there were significant climatic changes, they remained limited enough to prevent any complete turnover of species. One of the key outputs is the maximum probabilities calculated for each FU that are all systematically associated with the bioclimatic component VI. This component corresponds to a typical temperate climate with a predominance of deciduous forests that could potentially be located between the Boreal zone (coniferous forests) and the Mediterranean zone (sclerophyllous forests). At Coudoulous I, sub-Mediterranean temperate elements dominate throughout the sequence but faunal units such as FU_{VII}, FU_{IV+V} and FU_{III} show affinities with semi-continental or sub-continental conditions (i.e. FU_{VI}, FU_{II}). Finally, the paleoclimatic proxies from the bioclimatic model make it possible to exclude a boreal-type climate.

ACKNOWLEDGEMENTS

Several studies of interest to geology, dating, taxonomy and paleoenvironment have been carried out on this Coudoulous I sequence in recent years which will be soon published as part of a monograph 2021 under the direction of J. Jaubert. We want to warmly thank people of the team working on this site, especially faunal specialists A. Argant (Felids and Ursids), M. Boudadi-Maligne (Canids), F. Lacombat (Rhinocerotids), B. Labe (Proboscids), N. Lateur (Cervids), J.B. Mallye (Mustelids), and geo-stratigraphers B. Kervazo and colleagues. We thank the editor of AMQ as well as the two anonymous reviewers for their unvaluable inputs and comments on previous draft. Finally, we are extremely grateful to Prof. Lucy Wilson (University of New Brunswick, Canada) for the corrected English version of the manuscript.

REFERENCES

- Adrain J.M., Westrop S.R., Chatterton B.D.E., Ramsköld L. (2000) - Silurian Trilobite Alpha Diversity and the End-Ordovician Mass Extinction, *Paleobiology*, 26, 4, 625-646.
- Andrews P. (1990) - Owls, caves and fossils: predation, preservation and accumulation of small mammal bones in caves, with an analysis of the Pleistocene cave faunas from Westbury-sub-Mendip, Somerset, UK, University of Chicago Press (Ed.).
- Andrews P., O'Brien E.M. (2000) - Climate, vegetation, and predictable gradients in mammal species richness in southern Africa. *Journal of Zoology*, 251, 205-231. Doi: 10.1111/j.1469-7998.2000.tb00605.
- Argant A. (2021) - Les Ursidés et les Félidés de Coudoulous 1 (Tour-de-Faure, Lot). In: Jaubert J., Brugal J.P., Jeannet M., Kervazo B., Mourre V., Thiébaud C. (Eds). Coudoulous I: Séquence du Pléistocène moyen en Quercy ou comment l'Animal commande l'Homme et vice-versa. Musée National d'Histoire et d'Art, Luxembourg, collection Archéologiques, dir. F. Le Brun-Ricalens.
- Bakker V.J., Kelt D.A. (2000) - Scale-dependent patterns in body size distributions of neotropical mammals. *Ecology*, 81(12), 3530-3547.
- Baron J.P. (1997) - Démographie et dynamique d'une population française de *Vipera ursinii ursinii* (Bonaparte, 1835), Thèse de Doctorat, Ecole Pratique Des Hautes Etudes, Paris, 201.
- Belmaker M. (2006) - Community Structure through Time: Ubeidiya, a Lower Pleistocene Site as a Case Study, PhD thesis, Hebrew University of Jerusalem, Israel, 284.
- Belmaker M., Hovers E. (2011) - Ecological change and the extinction of the Levantine Neanderthals: implications from a diachronic study of micromammals from Amud Cave, Israel, *Quaternary Science Reviews*, 30, 3196-3209.
- Bernard A., Daux V., Lécuyer C., Brugal J.P., Genty D., Wainner K., Gardien V., Fourel F., Jaubert J. (2009) - Pleistocene seasonal temperature variations recorded in the $\delta^{18}O$ of *Bison priscus* teeth. *Earth and Planetary Science Letters*, 283, 133-143. Doi: 10.1016/j.epsl.2009.04.005
- Bhatnagar Y.V., Lovari S. (2008) - *Hemitragus jemlahicus*. The IUCN Red List of Threatened Species 2008: e.T9919A13027389. Doi: 10.2305/IUCN.UK.2008.RLTS.T9919A13027389.
- Bogaerts S. (2006) - First data on the reproduction of Lanza's skink, *Chalcides lanzai* Pasteur, 1967. *POD@RCIS*, 7 (1/2), 9-16.
- Bonifay E., Clottes J. (1981) - Le gisement de Coudoulous à Tour-de-Faure (Lot). XXIe Congr. Préhist. de France, Cahors-Montauban-Figeac, In "La préhistoire du Quercy dans le contexte de Midi-Pyrénées, vol.1, 27-28.
- Boudadi-Maligne M. (2010) - Les Canis pléistocènes du Sud de la France: approche biosystématique, évolutive et biochronologique. Université de Bordeaux 1 (Unpublished PhD thesis).
- Boudadi-Maligne M. (2021) - Les grands Canidés (genres *Canis* et *Cuon*) des niveaux inférieurs de Coudoulous 1. In: Jaubert J., Brugal J.P., Jeannet M., Kervazo B., Mourre V., Thiébaud C. (Eds). Coudoulous I : Séquence du Pléistocène moyen en Quercy ou comment l'Animal commande l'Homme et vice-versa. Musée National d'Histoire et d'Art, Luxembourg, collection Archéologiques, dir. F. Le Brun-Ricalens.
- Briand F. (1983) - Environmental control of food web structure. *Ecology*, 64, 253-263.
- Brugal J.P. (2006) - Les gisements paléontologiques et archéologiques de Coudoulous (Tour-de-Faure, Coudoulous). *Annales des Rencontres archéologiques de Saint-Céré*, 13, 3-17.
- Brugal J.P. (1999a) - Etude des populations de grands Bovidés européens: intérêt pour la connaissance des comportements humains au Paléolithique. In Le Bison, gibier et moyen de subsistance des hommes du paléolithique aux paléoindiens des grandes plaines, J.P. Brugal, F. David, J. Enloe, J. Jaubert (dir.), Le Bison, gibier et moyen de subsistance, du Paléolithique au Paléoindien des Grandes Plainnes, Actes du colloque de Toulouse 1995, ADPCA, Antibes, 85-103.
- Brugal J.P. (1999b) - Middle palaeolithic subsistence on large bovids: La Borde and Coudoulous I (Lot, France). in The role of early humans in the accumulation of European lower and middle palaeolithic bone assemblages, S. Gaudzinski, E. Turner (dir.), Monographien des Römisch-Germanischen Zentralmuseums Mainz, 42, 263-266.
- Brugal J.P. (2021) - Le matériel faunique non déterminable: apports taphonomique et géostratigraphique. Exercice sur la séquence de Coudoulous I. In: Jaubert J., Brugal J.P., Jeannet M., Kervazo B., Mourre V., Thiébaud C. (Eds). Coudoulous I: Séquence du Pléistocène moyen en Quercy ou comment l'Animal commande l'Homme et vice-versa. Musée National d'Histoire et d'Art, Luxembourg, collection Archéologiques, dir. F. Le Brun-Ricalens.
- Brugal J.P., Argant A., Boudadi-Maligne M., Crégut-

- Bonnoure E., Croitor R., Fernandez P., Fourvel J.B., Fosse P., Guadelli J.L., Labe B., Magniez P., Uzunidis A. (2020) - Pleistocene Herbivores and Carnivores from France: an updated overview of the literature, sites and taxonomy. *Annales de Paléontologie*, 106(2).
Doi: 10.1016/j.annpal.2019.102384
- Brugal J.P., Beauval C. Castel J.C., Costamagno S., Coumont M.P., Fournier J., Gerbe M., Griggo C., Juillard F., Kuntz D. (2013) - Les peuplements mammaliens au Pléistocène moyen et supérieur en Quercy. In *Modalité d'occupation et exploitation des milieux au Paléolithique dans le Sud-Ouest de la France: l'exemple du Quercy*. Jarry M., Brugal J.P., Ferrier C. (dir), *Paléo*, suppl. 4, 145-158.
- Brugal J.P., Costamagno S., Jaubert J., Mourre V. (1998) - Les gisements paléolithiques de Coudoulous (Tour-de-Faure, Lot, France). *Proceedings of the XIII Congress UISPP, Forli (Italia)*, 1996, Sect. 5 'Paléolithique inférieur et moyen', vol. 2, 141-145.
- Brugal J.P., Jaubert J. (1991) - Les gisements paléontologiques pléistocènes à indices de fréquentation humaine : un nouveau type de comportement de prédation ? *Paléo*, 3, 15-41.
- Brugal J.P., Jaubert J. (2006) - A long Palaeolithic sequence in Southwest France: the karstic sites of Coudoulous (Lot, Quercy, France). Paper presented at *Paleoanthropology Society*, April 24 -26th, 2006, San Juan, Puerto Rico.
- Brugal J.P., Croitor R. (2010) - Evolution, ecology and biochronology of herbivores associations in Europe during the last 3 million years. *Quaternaire*, 18(2), 129-152.
- Brugal J.P., Jaubert J. (2021) - Neanderthal subsistence strategies at the karstic sites of Coudoulous in the quercy (SW France) - from marginal scavenging to a kill-butcher site, and back. In: *Gaudzinski-Windheuser S. & Jöris O. (Eds). The Beef behind all Possible Past. The Tandem Festschrift in Honour of Elaine Turner and Martin Street*. *Monographien des RGZM 157* (Mainz 2021).
Doi: 10.11588/propylaeum.868.c11308
- Brown J.H., Nicoletto P.F. (1991) - Spatial Scaling of Species Composition: Body Masses of North American Land Mammals. *American Naturalist*, 138(6):1478-1512.
- Carbone C., Mace G.M., Roberts S.C., Macdonald D.W. (1999) - Energetic constraints on the diet of terrestrial carnivores. *Nature*, 402, 286-288.
- Castellano S., Giacoma C. (1998) - Morphological Variation of the Green Toad, *Bufo viridis*, in Italy: A Test of Causation. *Journal of Herpetology*, 32(4), 540-550.
Doi: 10.2307/1565208
- COHMAP Members (1988) - Climatic changes of the last 18,000 years: observations and model simulations, *Science*, 241, 4869, 1043-1052.
- Costamagno S. (1999) - Coudoulous II: Taphonomie d'un aven-piège. Contribution des accumulations d'origine naturelle à l'interprétation des archéofaunes du Paléolithique moyen. *Anthropozoologica*, 29, 13-32.
- Couchoud I. (2006) - Etude pétrographique et isotopique de spéléothèmes du Sud- Ouest de la France en contexte archéologique. PhD Thesis. University of Bordeaux I.
- Croft D.A. (2001) - Cenozoic Environmental Change in South America as Indicated by Mammalian Body Size Distributions (Cenograms). *Diversity and Distributions*, 7(6), 271-287.
- Croitor R., Brugal J.P. (2010) - Ecological and evolutionary dynamics of the carnivore community in Europe during the last 3 million years. *Quaternary International*, 212, 98-108.
- Damuth J., MacFadden B.J. (1990) - Body Size in Mammalian Paleobiology: Estimation and Biological Implications. *Cambridge University Press*.
- Davis E.B., Pyenson N.D. (2007) - Diversity biases in terrestrial mammalian assemblages and quantifying the differences between museum collections and published accounts: A case study from the Miocene of Nevada, *Palaeogeography, Palaeoclimatology, Palaeoecology*, 250, 139-149.
- De Martonne E. (1926) - Aréisme, et indices d'aridité. *Comptes rendus de l'Académie des Sciences*, 182, 1395-1398.
- Dice L.R. (1945) - Measures of the Amount of Ecologic Association between Species. *Ecology*, 26, 297-302.
- Edgar P., Bird D.R. (2006) - Action Plan for the Conservation of the Aesculapian Snake (*Zamenis longissimus*) in Europe. *Convention on the Conservation of European Wildlife and Natural Habitats, T-PVS/Inf 2006-19*, 1-23.
- Efron B., Tibshirani R.J. (1993) - An introduction to Bootstrap. *Monographs on statistics and applied probability*, 57, Chapman & Hall/CRC.
- Fenchel T. (1993) - There Are More Small Than Large Species? *Oikos*, 68(2), 375-378.
- Fernandez P. (2009) - Mammalian dynamics and palaeoecological analysis during the Pleistocene in Kozarnika Cave (Bulgaria). In: *Gatsov I. & Guadelli J.L. (Eds). Mélanges en l'honneur de Nikolay Sirakov*, *Saxa Loquuntur*, Sofia, 59-73.
- Fernández-Jalvo Y., Denys C., Andrews P., Williams T., Dauphin Y., Humphrey L. (1998) - Taphonomy and palaeoecology of Olduvai Bed-I (Pleistocene, Tanzania). *Journal of Human Evolution*, 34, 137-172.
- Fortelius M., Made J.V.D., Bernor R.L. (1996) - Middle and Late Miocene Suoidea of central Europe and the Eastern Mediterranean: evolution, biogeography, and paleoecology. In: *Bernor, R.L., Fahlbusch, V., Mittmann, H.W. (Eds). The Evolution of Western Eurasian Neogene Mammal Faunas*, *Columbia University Press*, New York, 348-377.
- Freudenthal M., Martín-Suárez E. (2013) - Estimating body mass of fossil rodents. *Scripta Geologica*, 145, 1-513.
- Gaines W.L., Harrod J.R., Lehmkuhl J.F. (1999) - Monitoring biodiversity: quantification and interpretation. *General Technical Report PNW-GTR-443*, *USDA Forest Service*, Pacific North-West Research Station.
- Giannoni S.M., Márquez R., Borghi C.E. (1997) - Airborne and substrate-borne communications of *Microtus (Terricola) gerbei* and *M. (T.) duodecimcostatus*. *Acta Theriologica*, 42, 123-141.
- Gingerich P.D., Smith B.H., Rosenberg K. (1982) - Allometric scaling on the dentition of primates and prediction of body size in fossils. *American Journal of Physical An-*

- thropology, 58, 81-100.
- Gingerich P.D. (1989) - New earliest Wasatchian mammalian Fauna from the Eocene of Northwestern Wyoming: composition and diversity in a rarely sampled High- Floodplain assemblage. *Papers in Palaeontology*. University of Michigan, 28, 1-97.
- Gómez Cano A.R., García Yelo B.A., Hernández Fernández M. (2006) - Cenogramas, análisis bioclimático y muestreo en faunas de mamíferos: implicaciones para la aplicación de métodos de análisis paleoecológico. *Estudios Geológicos*, 62, 135-144.
- Gotelli N.J., Colwell R.K. (2001) - Quantifying biodiversity: procedures and pitfalls in the measurement and comparison of species richness. *Ecology Letters*, 4, 379-391.
- Graitson E., Jacob J.P. (2007) - La Coronelle lisse *Coronella austriaca* (Laurenti, 1768). In: Jacob J.P., Percsy C., de Wavrin H., Graitson E., Kinet T., Denoël M., Paquay M., Percsy N., Remacle A. (Eds). *Amphibiens et Reptiles de Wallonie. Aves-Raîenne et Centre de Recherche de la Nature, des Forêts et du Bois (MRW - DGRNE), Faune-Flore-Habitats N° 2*, Namur, Belgium, 244-245.
- Grayson D.K. (1984) - *Quantitative Zooarchaeology*, Academic Press, Orlando.
- Haerty W., Gentilhomme E., Secondi J. (2007) - Female Preference for a Male Sexual Trait Uncorrelated with Male Body Size in the Palmate Newt (*Triturus helveticus*). *Behaviour*, 144(7), 797-814.
- Hammer Ø., Harper D.A.T., Ryan P.D. (2001) - Past: Paleontological Statistics Software Package for Education and Data Analysis. *Palaeontologia Electronica*, 4(1), p. 9.
- Hammer Ø., Harper D.A.T. (2006) - *Paleontological Data Analysis*, Editorial Blackwell Publishing Ltd, Oxford.
- Hatton I.A., McCann K.S., Fryxell J.M., Davies T.J., Smerlak M., Sinclair A.R.E., Loreau M. (2015) - The predator-prey power law: Biomass scaling across terrestrial and aquatic biomes. *Science*, 349(6252), aac6284–aac6284.
Doi: 10.1126/science.aac6284
- Hernández-Fernández M. (2001a) - Análisis paleoecológico y paleoclimático de las sucesiones de mamíferos del plio-pleistoceno ibérico. PhD Thesis. Universidad Complutense de Madrid.
- Hernández-Fernández M. (2001b) - Bioclimatic discriminant capacity of terrestrial mammal faunas. *Global Ecology Biogeography*, 10, 189-204.
- Hernández-Fernández M., Peláez-Campomanes P. (2003) - The bioclimatic model: a method of palaeoclimatic qualitative inference based on mammal associations. *Global Ecology and Biogeography*, 12, 507-517.
- Hernández-Fernández M., Peláez-Campomanes P. (2005) - Quantitative palaeoclimatic inference based on terrestrial mammal faunas. *Global Ecology and Biogeography*, 14, 39-56.
Doi: 10.1111/j.1466-822X.2004.00125.x
- Hernández-Fernández M., Alberdi M.T., Azanza B., Montoya P., Morales J., Nieto M., Peláez-Campomanes P. (2006) - Identification problems of arid environments in the Neogene-Quaternary mammal record of Spain. *Journal of Arid Environments*, 66, 585-608.
- Hernández-Fernández M., Álvarez-Sierra M.A., Peláez-Campomanes P. (2007) - Bioclimatic analysis of rodent palaeofaunas reveals severe climatic changes in Southwestern Europe during the Plio-Pleistocene. *Palaeogeography, Palaeoclimatology, Palaeoecology*, 251, 500-526.
- Hernandez M., Bahain J.J., Mercier N., Tombret O., Falguères C., Jaubert J. (2015) - Dating results on sedimentary quartz, bones and teeth from the Middle Pleistocene archaeological site of Coudoulous I (Lot, SW France): A comparative study between TT-OSL and ESR/U-series methods. *Quaternary Geochronology*, 30, 493-497.
- Hill J.E., Smith J.D. (1984) - *Bats: a natural history*, British Museum (Natural History), Londres.
- Huggett R.J., Cheesman J.E. (2002) - *Topography and the Environment*. Harlow, Essex: Prentice Hall.
- Huggett R.J. (2004) - *Fundamentals of Biogeography*, Routledge, New York.
- Ives A.R., Klug J.L., Gross K. (2000) - Stability and species richness in complex communities. *Ecology Letters*, 3 (5), 399-411.
Doi: 10.1046/j.1461-0248.2000.00144.x
- Jaccard P. (1912) - The distribution of the flora in the alpine zone.1. *New Phytologist*, 11, 37-50.
Doi: 10.1111/j.1469-8137.1912.tb05611.x
- Jacob J.P. (2007) - La rainette verte *Hyla arborea* (Linnaeus, 1758). In: Jacob J.P., Percsy C., de Wavrin H., Graitson E., Kinet T., Denoël M., Paquay M., Percsy N., Remacle A. (Eds). *Amphibiens et Reptiles de Wallonie. Aves-Raîenne et Centre de Recherche de la Nature, des Forêts et du Bois (MRW - DGRNE), Faune-Flore-Habitats N° 2*, Namur, Belgium, 153-163.
- Jaubert J. (1984) - Contribution à l'étude du Paléolithique ancien et moyen des Causses. Thèse 3e cycle, Université de Paris I Panthéon-Sorbonne, 2 vol., 615.
- Jaubert J. (1995) - Schémas opératoires et outillages peu élaborés: le cas du Paléolithique inférieur et moyen de Coudoulous I (Lot). In: Carbonell E. (Ed), *Cahier Noir*, 7, Universitat Rovira i Virgili, Tarragona, 85-100.
- Jaubert J., Kervazo B., Brugal J.P., Falgueres C., Jeannet M., Louchard A., Martin H., Maksud F., Mourre V., Quinif Y. (2005) - La séquence Pléistocène moyen de Coudoulous I (Lot). Bilan pluridisciplinaire. In: *Les premiers peuplements en Europe: Données récentes sur les modalités de peuplement et sur le cadre chronostratigraphique, géologique et paléogéographique des industries du Paléolithique ancien et moyen en Europe*, Molines N., Moncel M.H., Monnier J.L. (éds), (Actes du Coll. intern. Rennes, 22-25 septembre 2003), Oxford, British Archaeological Reports, International Series, 1364, 237-251.
- Jaubert J., Allard M., Bahain J.J., Bordes J.G., Bourguignon L., Brugal J.P., Castel J.C., Chalard P., Clottes J., Couchoud I., Ducasse S., Faivre J.P., Falguères C., Fontugne M., Guillermin P., Jarry M., Ladier E., Langlais M., Mourre V., Oberlin C., Quinif Y., Renard

- C., Turq A., Valladas H. (2013) - Le Quercy pléistocène: région à peuplement continu depuis 0,3 Ma ? archéostratigraphie et datations radiométriques. In Modalité d'occupation et exploitation des milieux au Paléolithique dans le Sud-Ouest de la France: l'exemple du Quercy. Jarry M., Brugal J.P., Ferrier C. (dir), Paléo, suppl. 4, 67-105.
- Jaubert J., Servelle C. (1996) - L'Acheuléen du Bassin de la Garonne. Etat de la question et implications. In Tuffreau, A. (Ed.), L'Acheuléen dans l'Ouest de l'Europe, Publ. du Centre d'Etudes et de Recherches Préhistoriques (CERP), Univ. des Sciences et Technologies de Lille, (Actes du colloque internat. de Saint-Riquier, 6-10 juin 1989), n°4, 77-108.
- Jeannet M. (2010) - L'écologie quantifiée. Essai de description de l'environnement continental à l'aide des microvertébrés (Quantified Ecology. Draft description of the continental environment using microvertebrates), Préhistoires méditerranéennes, 1, 11-34.
- Jeannet M., Brugal J.P., Jarry M. (2013) - Microfaune et paléoclimatologie dans le Pléistocène moyen et supérieur du Quercy. Essai d'écologie quantifiée. In Modalité d'occupation et exploitation des milieux au Paléolithique dans le Sud-Ouest de la France: l'exemple du Quercy. Jarry M., Brugal J.P., Ferrier C. (dir), Paléo, suppl. 4, 107-143.
- Jeannet M. (2021) - La microfaune de Coudoulous I: Paléoenvironnement et Biostratigraphie selon les microvertébrés. In: Jaubert J., Brugal J.P., Jeannet M., Kervazo B., Mourre V., Thiébaud C. (Eds). Coudoulous I: Séquence du Pléistocène moyen en Quercy ou comment l'Animal commande l'Homme et vice-versa. Musée National d'Histoire et d'Art, Luxembourg, collection Archéologiques, dir. F. Le Brun-Ricalens.
- Kervazo B., Jaubert J., Bruxelles L., Ferrier C., Konik S., Brugal J.P., O'Yi W., Queffelec A. (2021) - Etude géologique de Coudoulous I. In: Jaubert J., Brugal J.P., Jeannet M., Kervazo B., Mourre V., Thiébaud C. (Eds). Coudoulous I: Séquence du Pléistocène moyen en Quercy ou comment l'Animal commande l'Homme et vice-versa. Musée National d'Histoire et d'Art, Luxembourg, collection Archéologiques, dir. F. Le Brun-Ricalens.
- Legendre S. (1986) - Analysis of mammalian communities from the late Eocene and Oligocene of Southern France. *Palaeovertebrata*, 16, 191-212.
- Legendre S., Roth C. (1988) - Correlation of carnassial tooth size and body weight in recent carnivores (Mammalia), *Historical Biology*, 1, 85-98.
- Legendre S. (1989) - Les communautés de mammifères du Paléogène (Eocène supérieur et Oligocène) d'Europe occidentale : structures, milieux et évolution. *Münchener Geowissenschaftliche Abhandlungen*, Munich, (A), 16, 1-110.
- Lelièvre H. (2010) - Stratégies de thermorégulation chez deux colubridés sympatriques : la couleuvre verte et jaune *Hierophis viridiflavus* et la couleuvre d'esculape *Zamenis longissimus*. Une approche intégrée de la physiologie à la démographie. *Planète et Univers [physics]*. Thèse de doctorat, Université de Poitiers, 1-227.
- Leonard R.D., Jones G.T. (1988) - *Quantifying Diversity in Archaeology*, Cambridge University Press, New York.
- Lodé T. (1993) - Rythme d'activité et déplacements chez la Grenouille agile *Rana dalmatina* Bonaparte 1840. *Bulletin Société Herpétologique de France*, 67-68, 13-22.
- López-García J.M., Cuenca-Bescós G., Galindo-Pellicena M.Á., Luzi E., Berto C., Lebreton L., Desclaux E. (2021) - Rodents as indicators of the climatic conditions during the Middle Pleistocene in the southwestern Mediterranean region: implications for the environment in which hominins lived, *Journal of Human Evolution*, 150. Doi: [org/10.1016/j.jhevol.2020.102911](https://doi.org/10.1016/j.jhevol.2020.102911)
- Lovari S., Lorenzini R., Masseti M., Pereladova O., Carden R.F., Brook S.M. (2016a) - *Cervus elaphus*. The IUCN Red List of Threatened Species 2016: e.T55997072A22155320.
- Lovari S., Herrero J., Masseti M., Ambarli H., Lorenzini R., Giannatos G. (2016b) - *Capreolus capreolus*. The IUCN Red List of Threatened Species 2016: e.T42395A22161386
- Lyman R.L. (2008) - *Quantitative Paleozoology*, Cambridge Manuals in Archaeology Series. New York: Cambridge University Press.
- Maas M.C., Krause D.W. (1994) - Mammalian turnover and community structure in the Paleocene of North America. *Historical Biology*, 8, 91-128.
- Maas M.C., Anthony M.R.L., Gingerich P.D., Gunnell G.F., Krause D.W. (1995) - Mammalian generic diversity and turnover in the late Paleocene and early Eocene of the bighorn and crazy Mountains Basins, Wyoming and Montana (USA), *Palaeogeography, Palaeoclimatology, Palaeoecology*, 115, 181-207.
- Mallye J.B. (2021) - Les Mustélidés du gisement Pléistocène moyen de Coudoulous - locus 1. In: Jaubert J., Brugal J.P., Jeannet M., Kervazo B., Mourre V., Thiébaud C. (Eds). Coudoulous I: Séquence du Pléistocène moyen en Quercy ou comment l'Animal commande l'Homme et vice-versa. Musée National d'Histoire et d'Art, Luxembourg, collection Archéologiques, dir. F. Le Brun-Ricalens.
- Margalef R. (1977) - *Ecología*. Omega, Barcelona.
- Matz G., Weber D. (1999) - *Guide des amphibiens et reptiles d'Europe. Les 173 espèces européennes*. Ed: Delachaux et Niestlé, Lausanne, Paris, p. 292. ISBN 2-603-01118-9
- Mokeddem Z., McManus J.F. (2016) - Persistent climatic and oceanographic oscillations in the subpolar North Atlantic during the MIS 6 glaciation and MIS 5 interglacial, *Paleoceanography*, 31, 758-778. Doi: [10.1002/2015PA002813](https://doi.org/10.1002/2015PA002813)
- Montuire S. (1994) - Communautés de mammifères et environnements, l'apport des faunes aux reconstitutions des milieux en Europe depuis le Pliocène et l'impact des changements climatiques. Thèse de doctorat, Université Montpellier II, 1-128.
- Montuire S. (1999) - Mammalian faunas as indicators of environmental and climatic changes in Spain during the Pliocene-Quaternary transition. *Quaternary Research*, 52, 129-137.
- Montuire S., Desclaux E. (1997) - Palaeoecological analysis of

- mammalian faunas and environmental evolution in the South of France during the Pleistocene. *Boreas*, 26, 355-365.
- Montuire S., Marcolini F. (2001) - Palaeoenvironmental significance of the mammalian faunas from Italy since the Pliocene. *Journal of Quaternary Science*, 17(1), 87-96.
- Mourgues M. (1908) - Catalogue raisonné de la faune herpétologique des environs de Sainte-Cécile Sérignan, Orange (Vaucluse). *La Feuille des Jeunes Naturalistes*, 38(4), 178-182.
- Mourre V. (1996) - Les industries en quartz au Paléolithique. Terminologie, méthodologie et technique. *Paléo*, 8, 205-223.
- Naulleau G. (1983) - The Effects of Temperature on Digestion in *Vipera aspis*. *Journal of Herpetology*, 17(2), 166-170.
- Olsson M. (1993) - Male preference for large females and assortative mating for body size in the sand lizard (*Lacerta agilis*). *Behavioral Ecology and Sociobiology*, 32, 337-341.
- Olsson M., Madsen T., Shine R. (1997) - Is Sperm Really so Cheap? Costs of Reproduction in Male Adders, *Vipera berus*. *Proceedings: Biological Sciences*, 264(1380), 455-459.
- Palmqvist P., Mendoza M., Arribas A., Gröcke D.R. (2002) - Estimating the body mass of Pleistocene canids: discussion of some methodological problems and a new 'taxon free' approach. *Lethaia*, 35, 358-360.
- Palombo M.R., Giovinazzo C. (2006) - What do cenograms tell us about mammalian palaeoecology? The example of Plio-Pleistocene Italian faunas. *CourierForschungsinstitut Senckenberg*, 256, 215-235.
- Palombo M.R., Sardella M., Novelli M. (2008) - Carnivora dispersal in Western Mediterranean during the last 2.6 Ma. *Quaternary International*, 179, 176-189.
- Palombo M.R. (2015) - To what extent could functional diversity be a useful tool in inferring ecosystem responses to past climate changes? *Quaternary International*.
Doi: [org/10.1016/j.quaint.2015.07.069](https://doi.org/10.1016/j.quaint.2015.07.069)
- Pellicone G., Caloiero T., Guagliardi I. (2019) - The De Martonne aridity index in Calabria (Southern Italy). *Journal of Maps*, 15(2), 788-796.
Doi: [10.1080/17445647.2019.1673840](https://doi.org/10.1080/17445647.2019.1673840)
- Popov V., Marinska M. (2007) - An almost one million year long (Early to Late Pleistocene) small mammal succession from the archaeological layers of Kozarnika Cave in Northern Bulgaria. In: Kahlke R.D., Maul L.C., Mazza P.P.A. (Eds). *Late Neogene and Quaternary biodiversity and evolution: Regional developments and interregional correlations*. Proceedings of the 18th International Senckenberg Conference (VI International Palaeontological Colloquium in Weimar), Courier Forschungsinstitut Senckenberg, Frankfurt, 259, 79-92.
- Prado J.L., Alberdi M.T., Azanza B., Rodríguez J. (2004) - Patterns of body-size change in large mammals during the Late Cenozoic in the Northwestern Mediterranean, Miscelánea en homenaje a Emiliano Aguirre, Museo Arqueológico Regional, Madrid, 465-479.
- Raia P., Meloro C., Barbera C. (2007) - Inconstancy in predator/prey ratios in Quaternary large mammal communities of Italy, with an appraisal of mechanisms, *Quaternary Research*, 67, 255-263.
- Rapoport E.H. (1975) - Areografía: estrategias geograficas de las especies, Fondo de Cultura Económica, México, D.F.
- Raup D. (1975) - Taxonomic Diversity Estimation Using Rarefaction, *Paleobiology*, 1(4), 333-342.
- Reading C.J., Davies J.L. (1996) - Predation by grass snakes (*Natrix natrix*) at a site in southern England. *Journal of Zoology*, 239(1), 73-82.
- Ricklefs R.E., Miller G.L. (1999) - *Ecology*, Freeman and Company, New York.
- Rivas-Martínez S. (1994) - Clasificación bioclimática de la Tierra, *Folia Botanica Matritensis*, 13, 1-27.
- Rivas-Martínez S., Sánchez-Mata D., Costa M. (1999) - North American boreal and western temperate forest vegetation, *Itinera Geobotanica*, 12, 5-316.
- Rivas-Martínez S., Penas A., Díaz T.E. (2004) - Bioclimatic & Biogeographic Maps of Europe, University of León, E-24071, Spain. ISBN 84-9773-276-6.
- Rivas-Martínez S., Rivas-Saenz S., Penas A. (2011) - Worldwide Bioclimatic Classification System. *Global Geobotany*, 1, 1-634.
- Rodríguez J., Díez J.C., Laplana C., Nicolás M.E. (1996) - Estudio paleoecológico de la asociación de mamíferos del nivel TD6 (Pleistoceno Inferior, Sierra de Atapuerca, Burgos, España). [Palaeoecological study of the mammal assemblage from level TD6 (Lower Pleistocene, Sierra de Atapuerca, Burgos, Spain)]. *Revista Española de Paleontología*, 11 (2), 199-206.
- Rodríguez J. (1999) - Use of cenograms in mammalian palaeoecology. A critical review. *Lethaia*, 32, 331-347.
Doi: [10.1111/j.1502-3931.1999.tb00551.x](https://doi.org/10.1111/j.1502-3931.1999.tb00551.x)
- Rohde K. (1992) - Latitudinal Gradients in Species Diversity: The Search for the Primary Cause, *Oikos*, 65(3), 514-527.
- Royer A., Montuire S., Legendre S., Discamps E., Jeannet M., Lécuyer C. (2016) - Investigating the Influence of Climate Changes on Rodent Communities at a Regional-Scale (MIS 1-3, Southwestern France). *PLoS ONE* 11(1): e0145600.
Doi: [10.1371/journal.pone.0145600](https://doi.org/10.1371/journal.pone.0145600)
- Royer A., García Yelo B.A., Laffont R., Hernández-Fernández M. (2020) - New bioclimatic models for the quaternary palaeoarctic based on insectivore and rodent communities, *Palaeogeography, Palaeoclimatology, Palaeoecology*, 560.
Doi: [org/10.1016/j.palaeo.2020.110040](https://doi.org/10.1016/j.palaeo.2020.110040)
- Sanders H.L. (1968) - Marine benthic diversity: A comparative study. *American naturalist*, 102, 243-282.
- Shannon C., Weaver W. (1964) - *The Mathematical Theory of Communication*, The University of Illinois Press, Urbana, 1-125.
- Shi G.R. (1993) - Multivariate data analysis in palaeoecology and palaeobiogeography: a review. *Palaeogeography*

- graphy, Palaeoclimatology, Palaeoecology, 105, 199-234.
- Simpson G.G. (1943) - Mammals and the nature of continents. American Journal of Science, 241(1), 1-31.
- Smith R.J. (2002) - Estimation of Body Mass in Paleontology. Journal of Human Evolution, 43, 271-287.
Doi: 10.1006/jhev.2002.0573
- Smith F.A., Lyons S.K., Ernest S.K.M., Jones K.E., Kaufman D.M., Dayan T., Marquet P.A., Brown J.H., Haskell J.P. (2003) - Body mass of late Quaternary mammals. Ecology 84:3402 (MOM-Mammals Version 4.1).
- Sørensen T. (1948) - A method of establishing groups of equal amplitude in plant society based on similarity of species content and its application to analyses of the vegetation on Danish commons. Kongelige Danske Videnskaberne Selskab, Biologiske Skrifter, 5, 1-34.
- Spellerberg I.F., Fedor P.J. (2003) - A tribute to Claude Shannon (1916-2001) and a plea for more rigorous use of species richness, species diversity and the «Shannon-Wiener» Index. Global Ecology and Biogeography, 12 (3), 177-179.
- Stoetzel E., El Agbani M.A., Qninba A., Mouna M., Mataame A., El Brini H., Denys D. (2010) - Inventaire taxonomique préliminaire des petits vertébrés terrestres du Nord du Maroc. Bulletin de l'Institut Scientifique, section Sciences de la Vie, 2010, 32(1), 17-24.
- Šukalo G., Dekić M., Dikić D., Dordević S., Tomović L. (2014) - New records of the common spadefoot toad, *pelobates fuscus* (Anura: Pelobatidae), in Bosnia and Herzegovina. Ecologica Montenegrina, 1(2), 92-95.
- Sydłowski R. (2000) - "*Salamandra salamandra*", Animal Diversity Web. Accessed April 09, 2021 at animaldiversity.org/accounts/salamandra_salamandra.
- Tipper J.C. (1979) - Rarefaction and Rarefaction - The Use and Abuse of a Method in Paleocology. Paleobiology, 5(4), 423-434.
- Tougaard C., Renvoisé E., Petitjean A., Quéré J.P. (2008) - New insight into the colonization processes of common voles: inferences from molecular and fossil evidence. PLoS ONE, 3, e3532.
Doi: 10.1371/journal.pone.0003532
- Tur-Torres J. (2017-2018) - Ecología de la serpiente blanca, *Zamenis scalaris*, en la isla de Formentera. Memòria del Treball de Fi de Grau de Biologia, Universitat de les Illes Balears, Facultat de Ciències, 1-25.
- Valensi P., Psathi E. (2004) - Faunal exploitation during the middle Palaeolithic in Southeastern France and Northwestern Italy. International Journal of Osteoarchaeology, 14, 256-272.
- Valverde J.A. (1964) - Remarques sur la structure de l'évolution des communautés de vertébrés terrestres. I. Structure d'une communauté. II. Rapport entre prédateurs et proies. Terre et Vie, 111, 121-154.
- Valverde J.A. (1967) - Estructura de una comunidad de vertebrados terrestres. Monografías de la estación de Doñana, 1, 1-129.
- Van Valkenburgh B., Janis C.M. (1993) - Historical diversity patterns in North American Large herbivores and carnivores. In: Ricklefs R.E. & Schluter D. (Eds.). Species Diversity in Ecological Communities. The University of Chicago Press, Chicago, 330-340.
- Whittaker R.H. (1972) - Evolution and Measurement of Species Diversity. Taxon, 21(2/3), 213-251.
- Yachi S., Loreau M. (1999) - Biodiversity and ecosystem productivity in a fluctuating environment: The insurance hypothesis. Proceedings of the National Academy of Sciences, 96(4) 1463-1468.
Doi: 10.1073/pnas.96.4.1463
- Zucchi C. (2021) - *Lacerta bilineata*. Monaco Nature Encyclopedia.monaconatureencyclopedia.com/lacerta-bilineata/.

ELECTRONIC REFERENCES

- (1) Museum national d'Histoire naturelle (Ed.) (2003-2021). *Myotis capaccinii* (Bonaparte, 1837) - Murin de Capaccini, *Vespertilio de Capaccini*. Inventaire National du Patrimoine Naturel. inpn.mnhn.fr/espece/cd_nom/60439/tab/fiche.
- (2) Museum national d'Histoire naturelle (Ed.) (2003-2021). *Myotis mystacinus* (Kuhl, 1817) - Murin à moustaches, *Vespertilio à moustaches*. Inventaire National du Patrimoine Naturel. Retrieved from inpn.mnhn.fr/espece/cd_nom/60383/tab/fiche.
- (3) Museum national d'Histoire naturelle (Ed.) (2003-2021). *Myotis bechsteinii* (Kuhl, 1817) - Murin de Bechstein. Inventaire National du Patrimoine Naturel. Retrieved from inpn.mnhn.fr/espece/cd_nom/79301/tab/fiche.
- (4) Museum national d'Histoire naturelle (Ed.) (2003-2021). *Vespertilio murinus* Linnaeus, 1758 - Vespertilion bicolore, *Sérotine bicolore*. Inventaire National du Patrimoine Naturel. Retrieved from inpn.mnhn.fr/espece/cd_nom/60537/tab/fiche.
- (5) Museum national d'Histoire naturelle (Ed.) (2003-2021). *Eptesicus serotinus* (Schreber, 1774) - *Sérotine commune*. Inventaire National du Patrimoine Naturel. Retrieved from inpn.mnhn.fr/espece/cd_nom/60360/tab/fiche.
- (6) Museum national d'Histoire naturelle (Ed.) (2003-2021). *Nyctalus noctula* (Schreber, 1774) - *Noctule commune*. Inventaire National du Patrimoine Naturel. Retrieved from inpn.mnhn.fr/espece/cd_nom/60468/tab/fiche.
- (7) Museum national d'Histoire naturelle (Ed.) (2003-2021). *Pipistrellus pipistrellus* (Schreber, 1774) - *Pipistrelle commune*. Inventaire National du Patrimoine Naturel. Retrieved from inpn.mnhn.fr/espece/cd_nom/60479/tab/fiche.
- (8) Museum national d'Histoire naturelle (Ed.) (2003-2021). *Barbastella barbastellus* (Schreber, 1774) - *Barbastelle d'Europe*, *Barbastelle*. Inventaire National du Patrimoine Naturel. Retrieved from inpn.mnhn.fr/espece/cd_nom/60345/tab/fiche.
- (9) Museum national d'Histoire naturelle (Ed.) (2003-2021).

Plecotus auritus (Linnaeus, 1758) - Oreillard roux, Oreillard septentrional. Inventaire National du Patrimoine Naturel. Retrieved from inpn.mnhn.fr/espece/cd_nom/60518/tab/fiche.

(10) Museum national d'Histoire naturelle (Ed.) (2003-2021). *Plecotus austriacus* (Fischer, 1829) - Oreillard gris, Oreillard méridional. Inventaire National du Patrimoine Naturel. Retrieved from inpn.mnhn.fr/espece/cd_nom/60527/tab/fiche.

(11) Sologne Nature Environnement (2021, June 03) - Crapaud commun, *Bufo bufo*. A la découverte de la Sologne. Retrieved from decouvertesologne.fr/amphibiens-crustacees/le-crapaud-commun.

(12) Info Fauna Centre Suisse de Coordination pour la Protection des Amphibiens et Reptiles de Suisse (karch) (2021, June 03). Crapaud calamite. Retrieved from karch.ch/karch/home/amphibien/amphibienarten-der-schweiz/kreuzkrote.html.

(13) Marsh Frog: *Pelophylax ridibundus* (2021, March 5) - AZ Animals. Retrieved from a-z-animals.com/animals/marsh-frog/.

(14) Museum national d'Histoire naturelle (Ed.) (2003-2021). *Rana temporaria* Linnaeus, 1758 - Grenouille rousse. Inventaire National du Patrimoine Naturel. Retrieved from inpn.mnhn.fr/espece/cd_nom/351/tab/fiche.

(15) Museum national d'Histoire naturelle (Ed.) (2003-2021). *Podarcis muralis* (Laurenti, 1768) - Lézard des murailles. Inventaire National du Patrimoine Naturel. Retrieved from inpn.mnhn.fr/espece/cd_nom/77756/tab/fiche.

(16) Centre Permanent d'Initiatives pour l'Environnement Flandre Maritime (2016, March 09). Orvet fragile. Retrieved from cpieflandremaritime.fr/agir/un-dragon-dans-mon-jardin/fiches-reptiles/article/orvet-fragile.

(17) Centre Suisse de Coordination pour la Protection des Amphibiens et Reptiles de Suisse (karch) (2021). Couleuvre vipérine. Retrieved from karch.ch/karch/home/reptilien/reptilienarten-der-schweiz/vipernatter.html.

(18) Google (n.d.). Carte physique de la France, avec régions et départements. Retrieved from fr.wikipedia.org/wiki/ficher.

Ms. received: 14 January, 2021 Revised: 29 January, 2021
Accepted: 20 June, 2021 Available online: 14 July, 2021