



**HAL**  
open science

# The Late Hellenistic military ship of Phanagoria. New data for the reconstruction of the ship

Pierre Poveda, Giulia Boetto, Sergey Olkhovskiy

► **To cite this version:**

Pierre Poveda, Giulia Boetto, Sergey Olkhovskiy. The Late Hellenistic military ship of Phanagoria. New data for the reconstruction of the ship. *Sailing through History Reading the Past: Imagining the Future*. Sixteenth International Symposium on Boat and Ship Archaeology, University of Zadar, Sep 2021, Zadar, Croatia. halshs-03389055

**HAL Id: halshs-03389055**

**<https://shs.hal.science/halshs-03389055v1>**

Submitted on 6 Mar 2023

**HAL** is a multi-disciplinary open access archive for the deposit and dissemination of scientific research documents, whether they are published or not. The documents may come from teaching and research institutions in France or abroad, or from public or private research centers.

L'archive ouverte pluridisciplinaire **HAL**, est destinée au dépôt et à la diffusion de documents scientifiques de niveau recherche, publiés ou non, émanant des établissements d'enseignement et de recherche français ou étrangers, des laboratoires publics ou privés.



# The Late Hellenistic military ship of **Phanagoria**

New data for the reconstruction of the ship

**Sergey Olkhovskiy**  
Institute of Archaeology  
Russian Academy of Science

**Pierre Poveda**  
**Giulia Boetto**  
AMU - CNRS  
Centre Camille Jullian

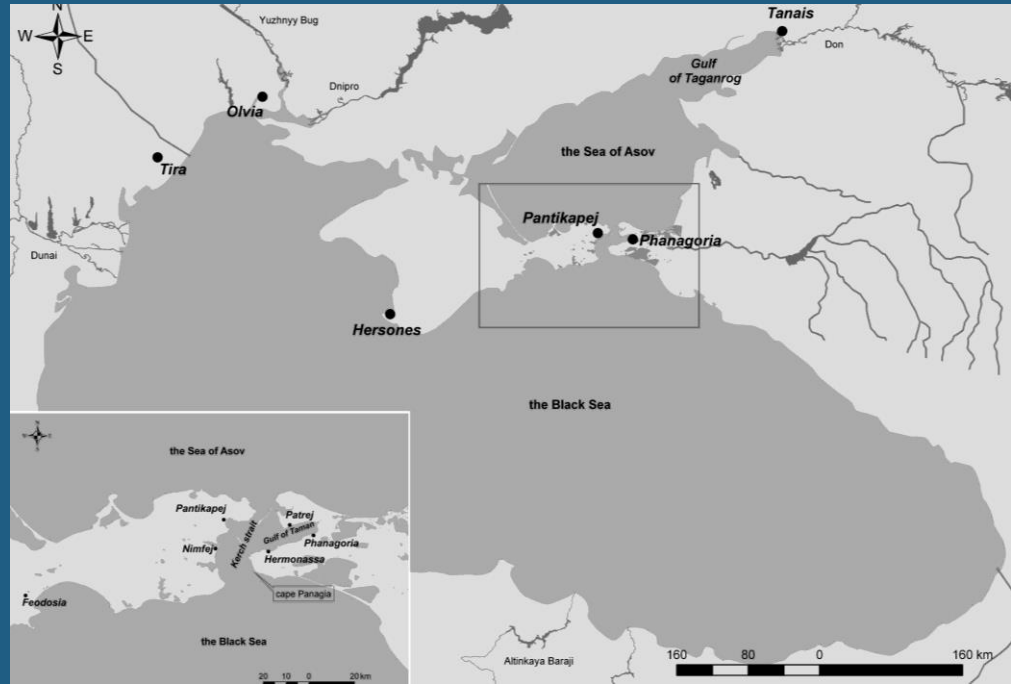


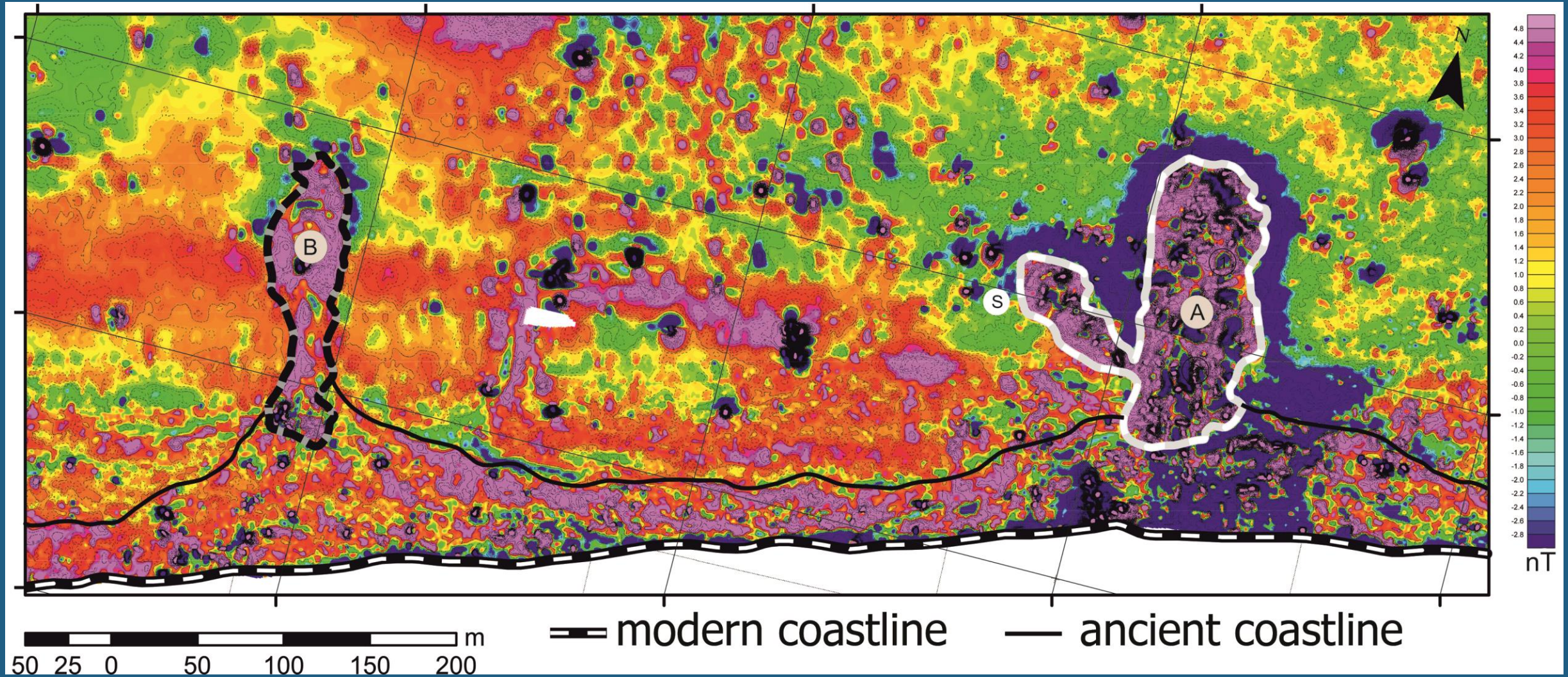
ИНСТИТУТ АРХЕОЛОГИИ  
РОССИЙСКОЙ АКАДЕМИИ НАУК



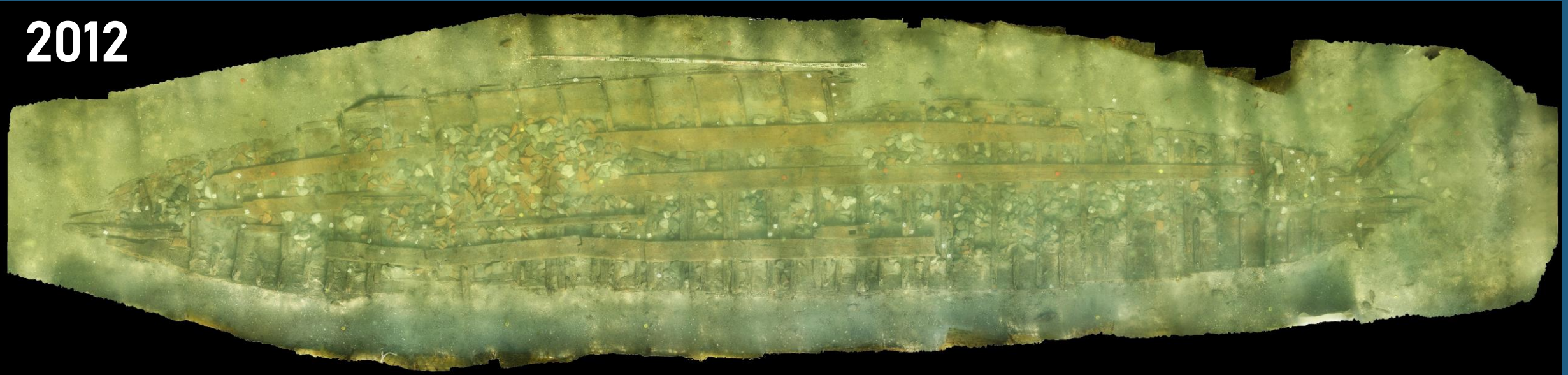
Aix\*Marseille  
université  
*Socialement engagée*







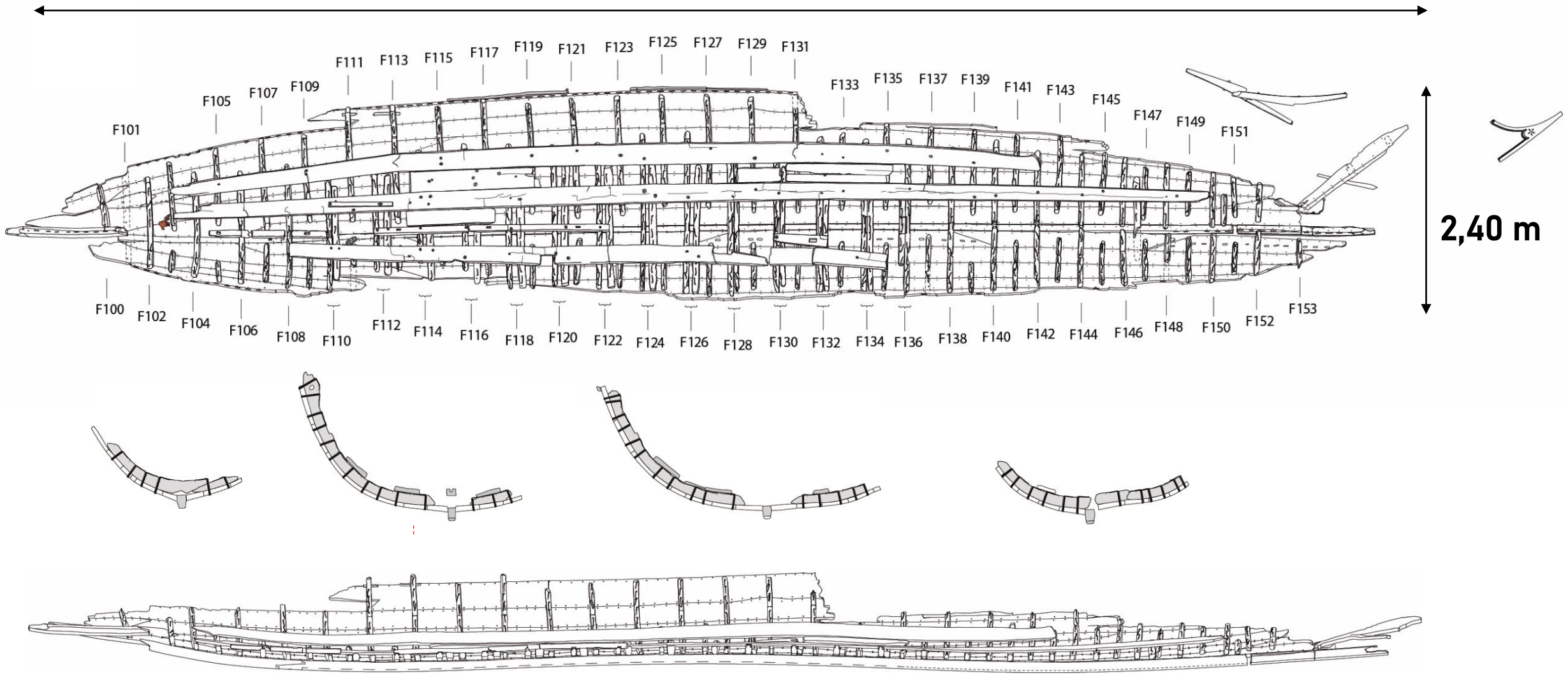
2012



2014



15,82 m



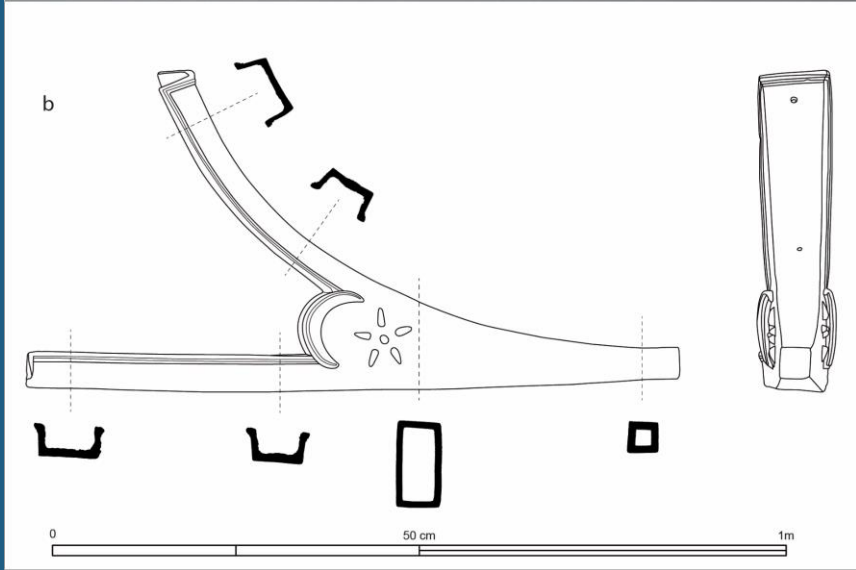
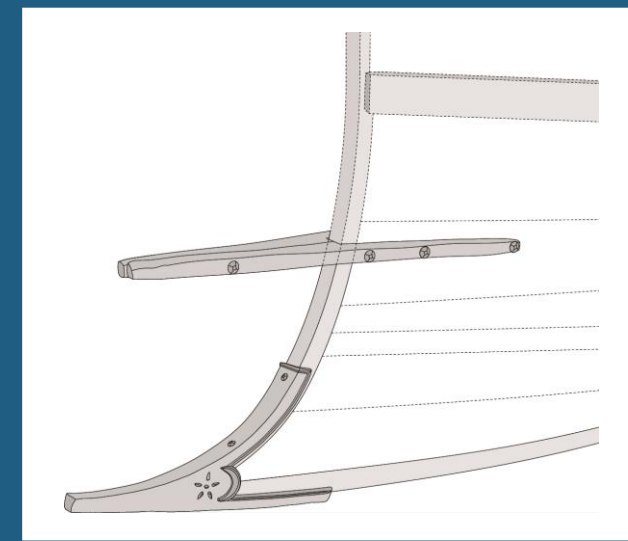
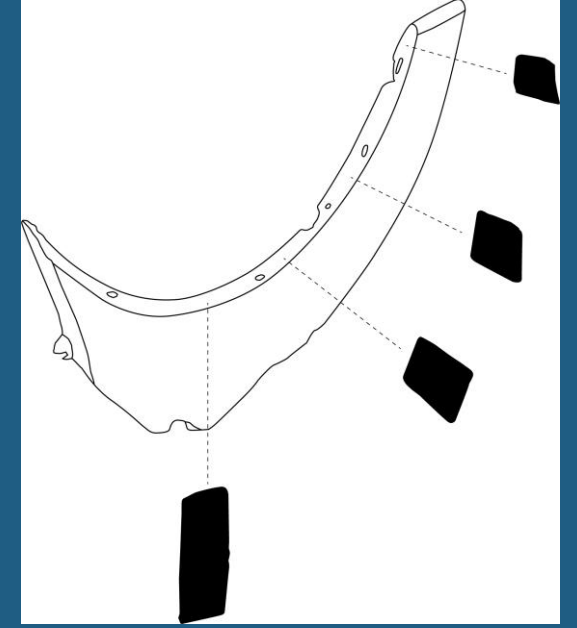
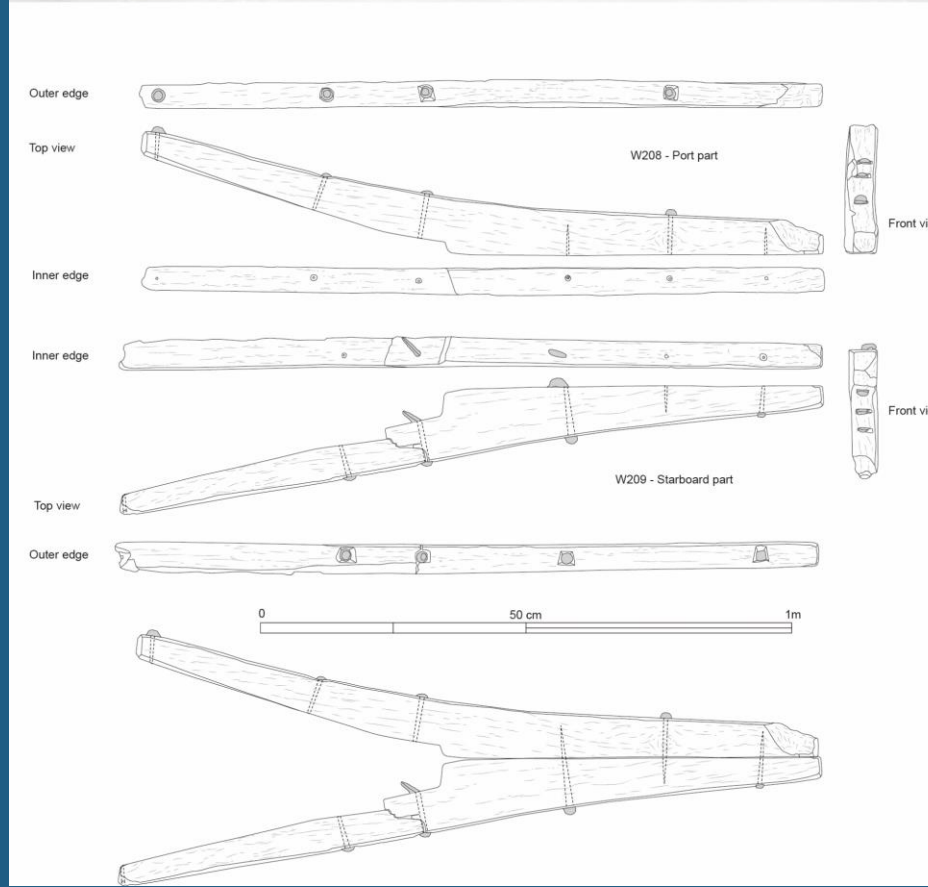
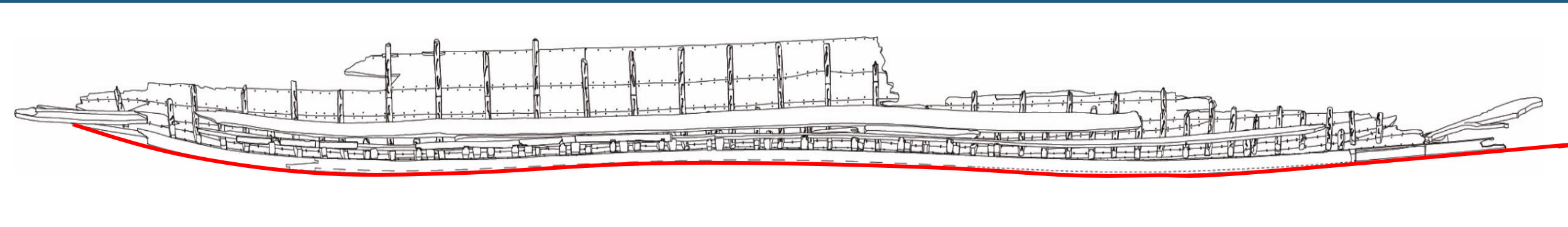
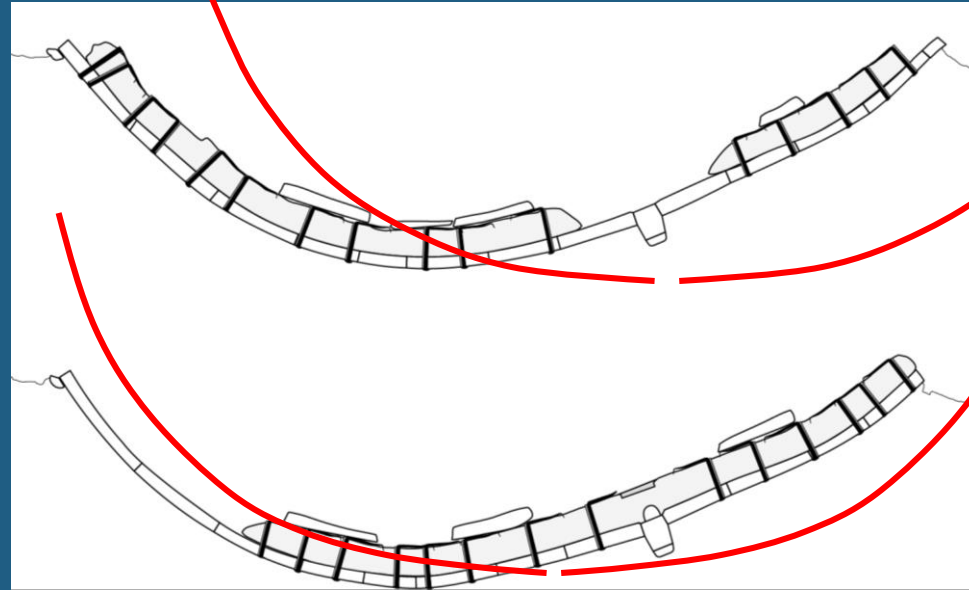


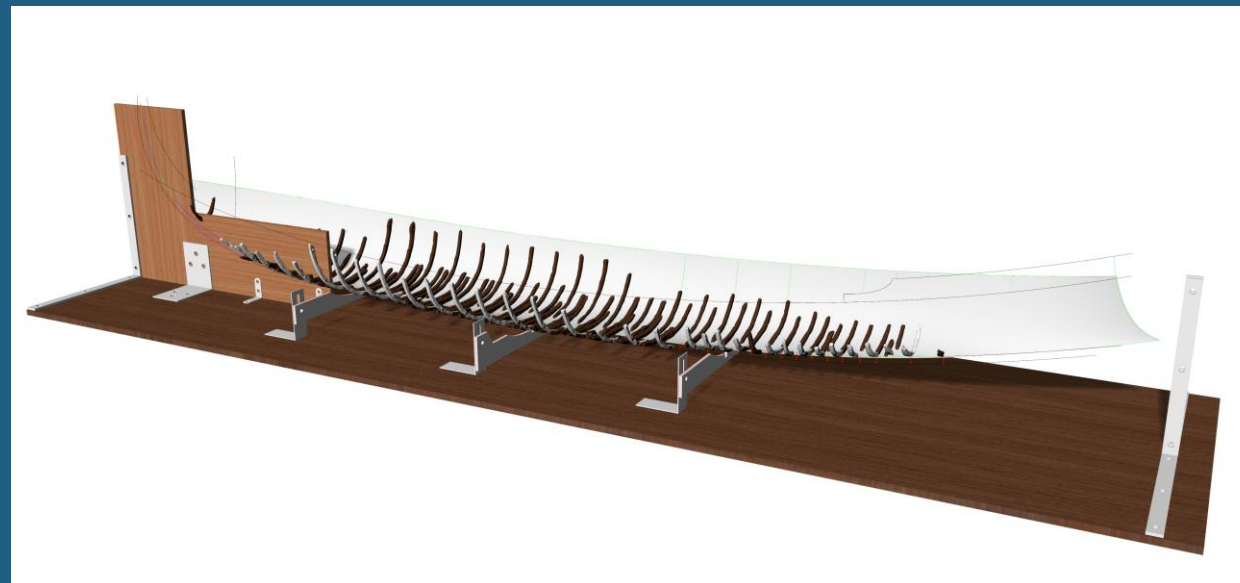
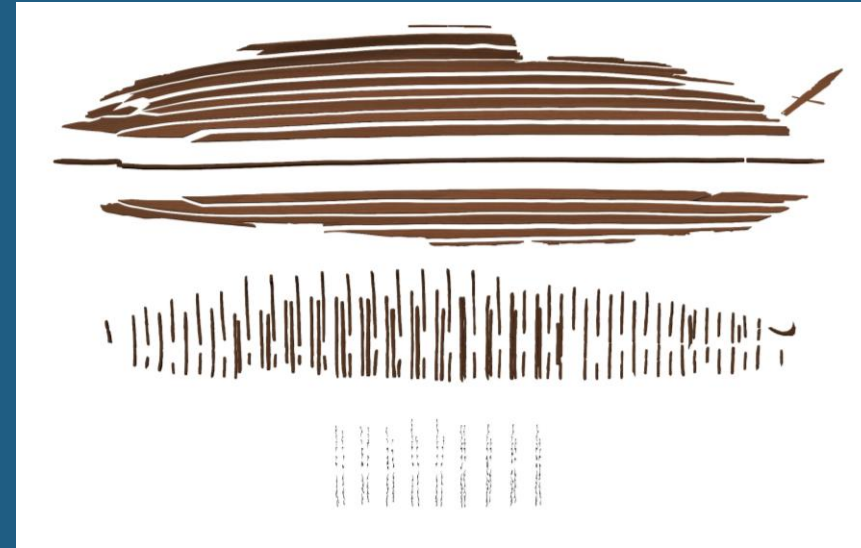
Fig. 24

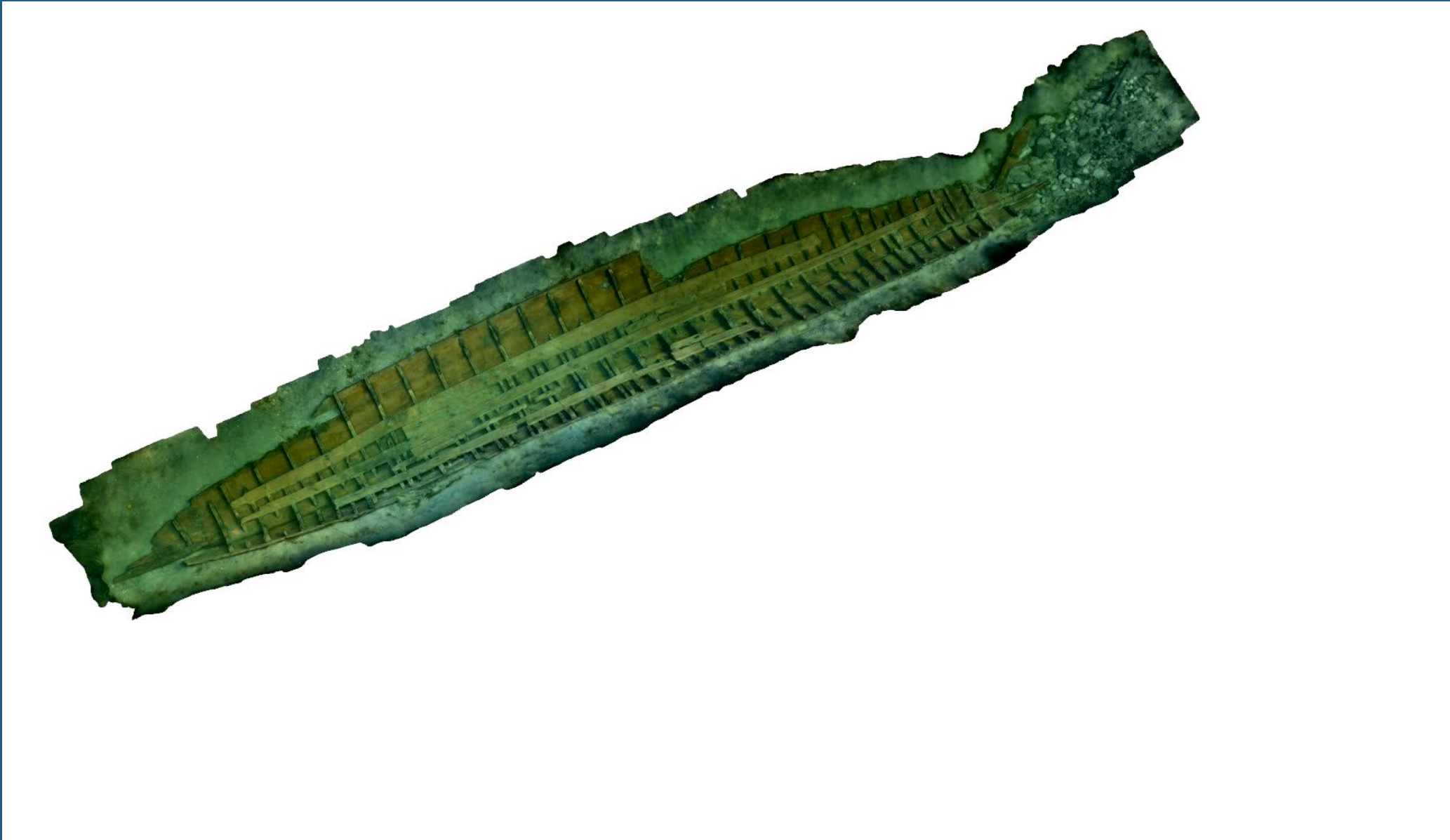




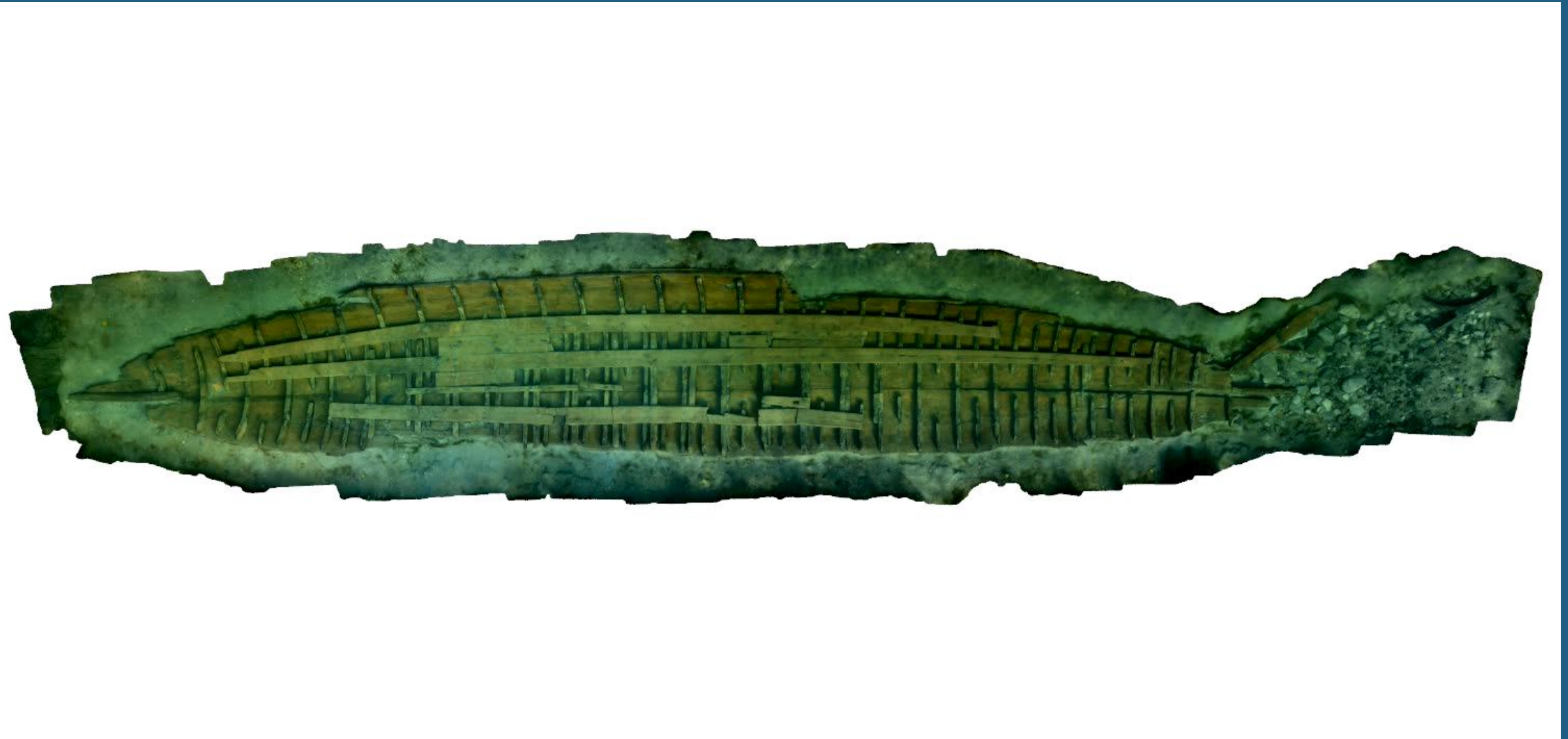
A reconstruction ?

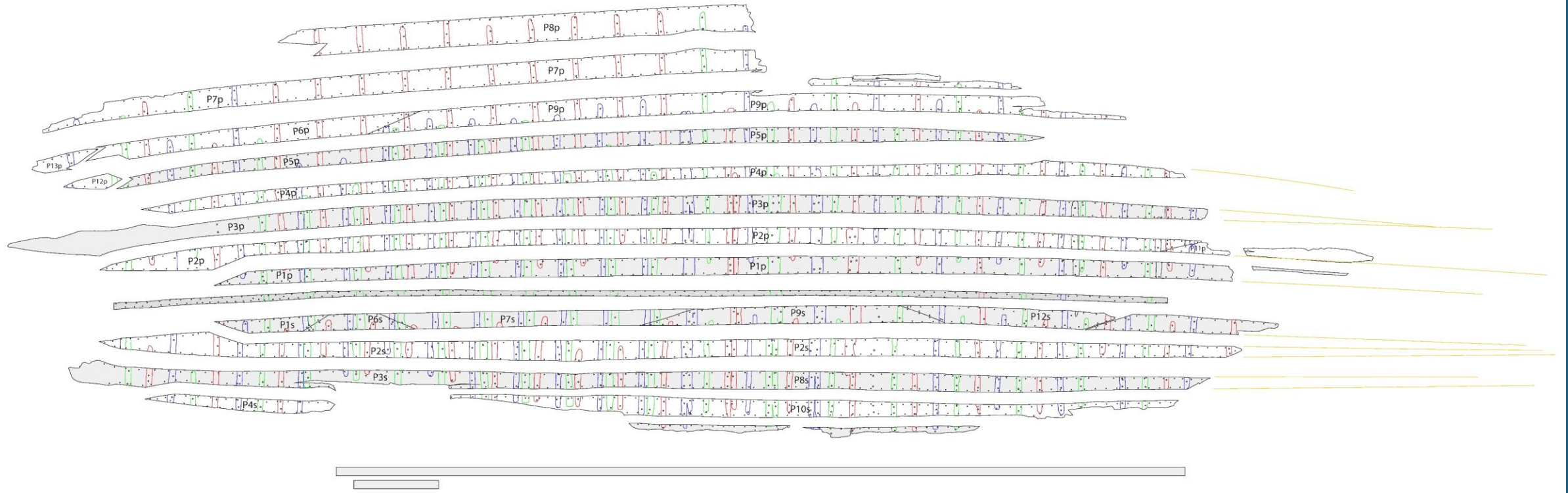


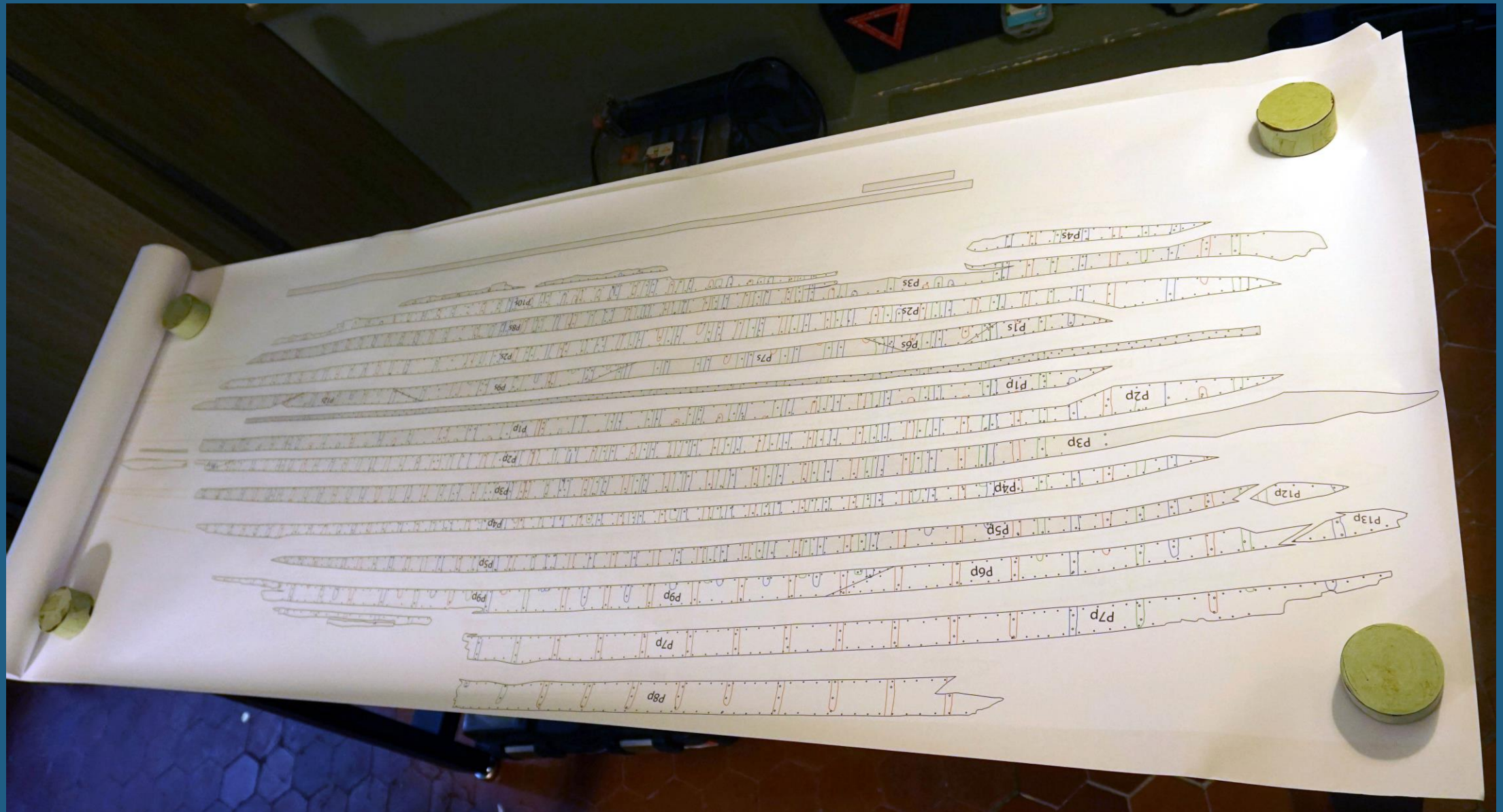






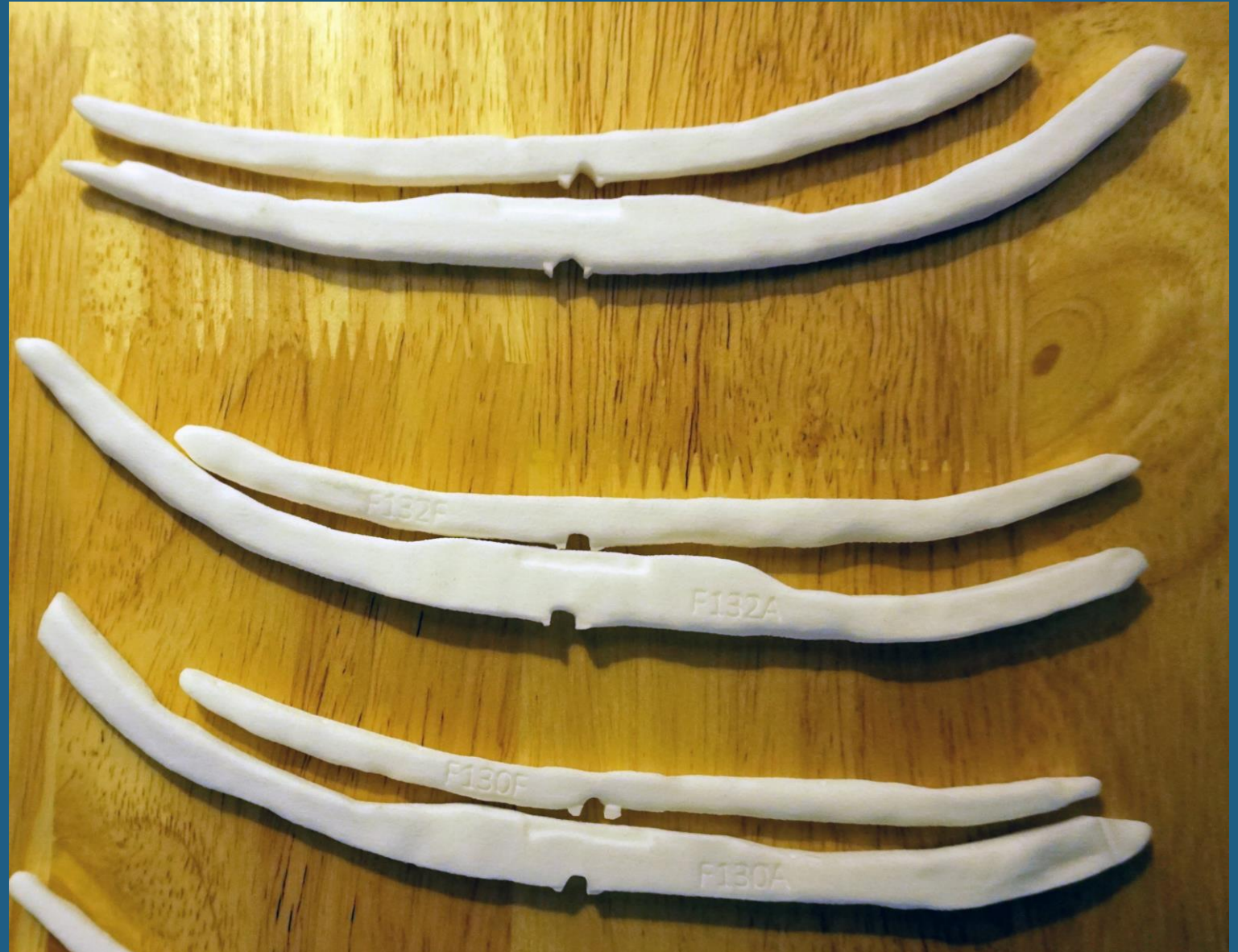


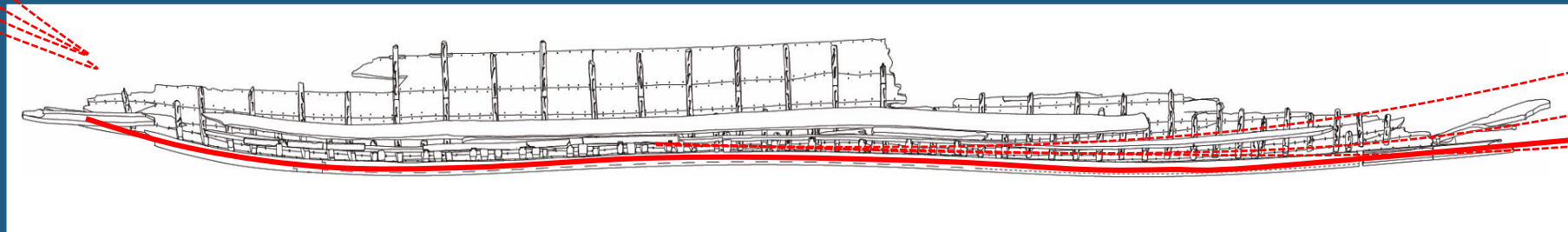




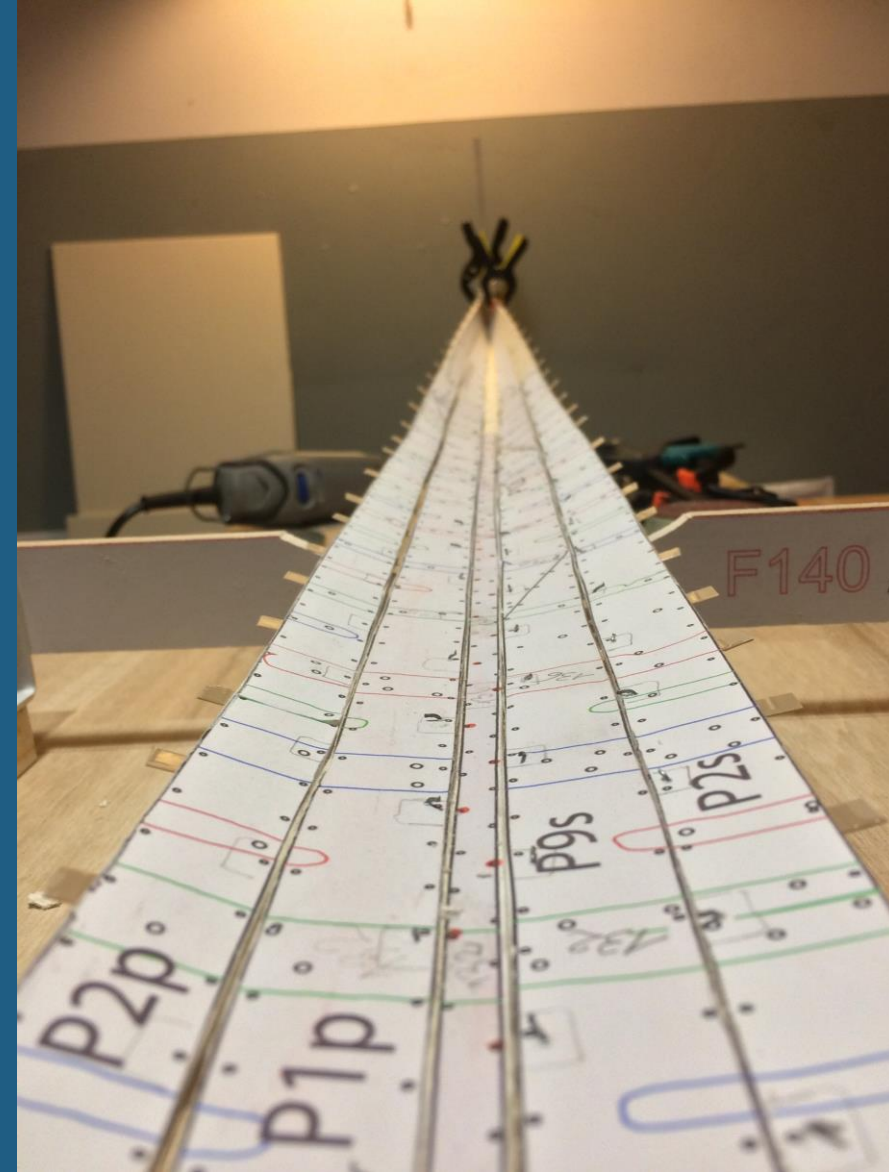
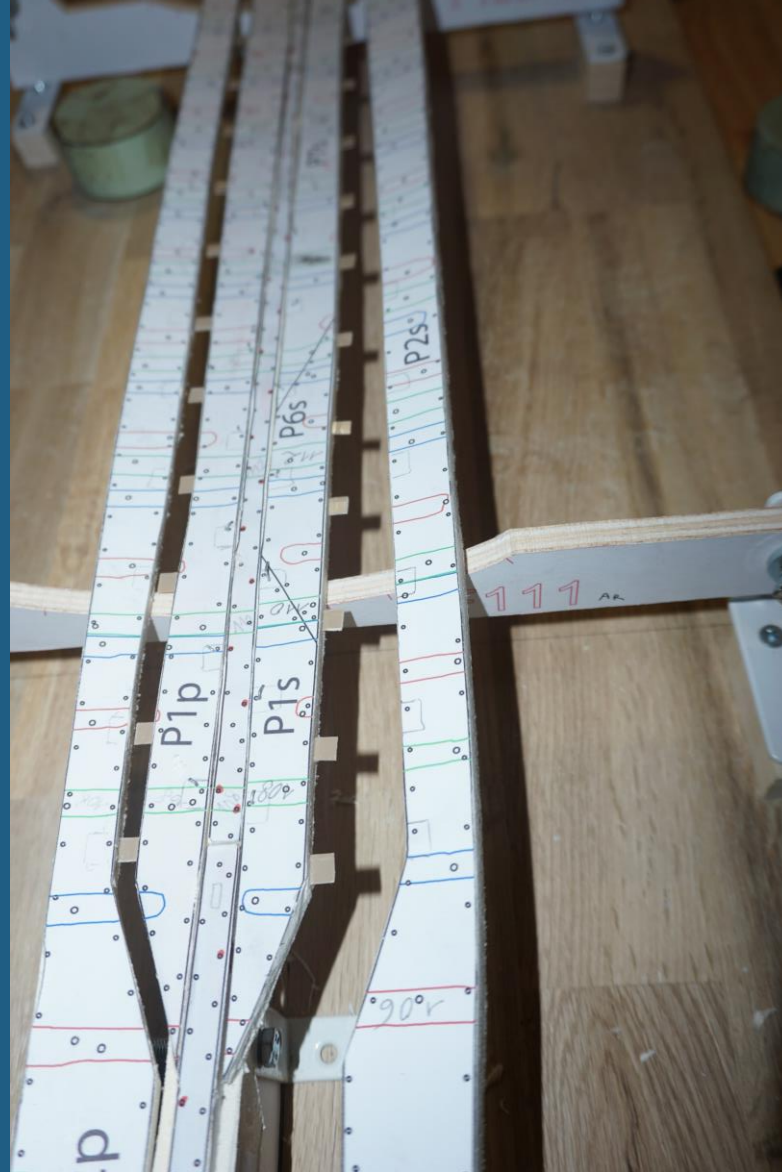


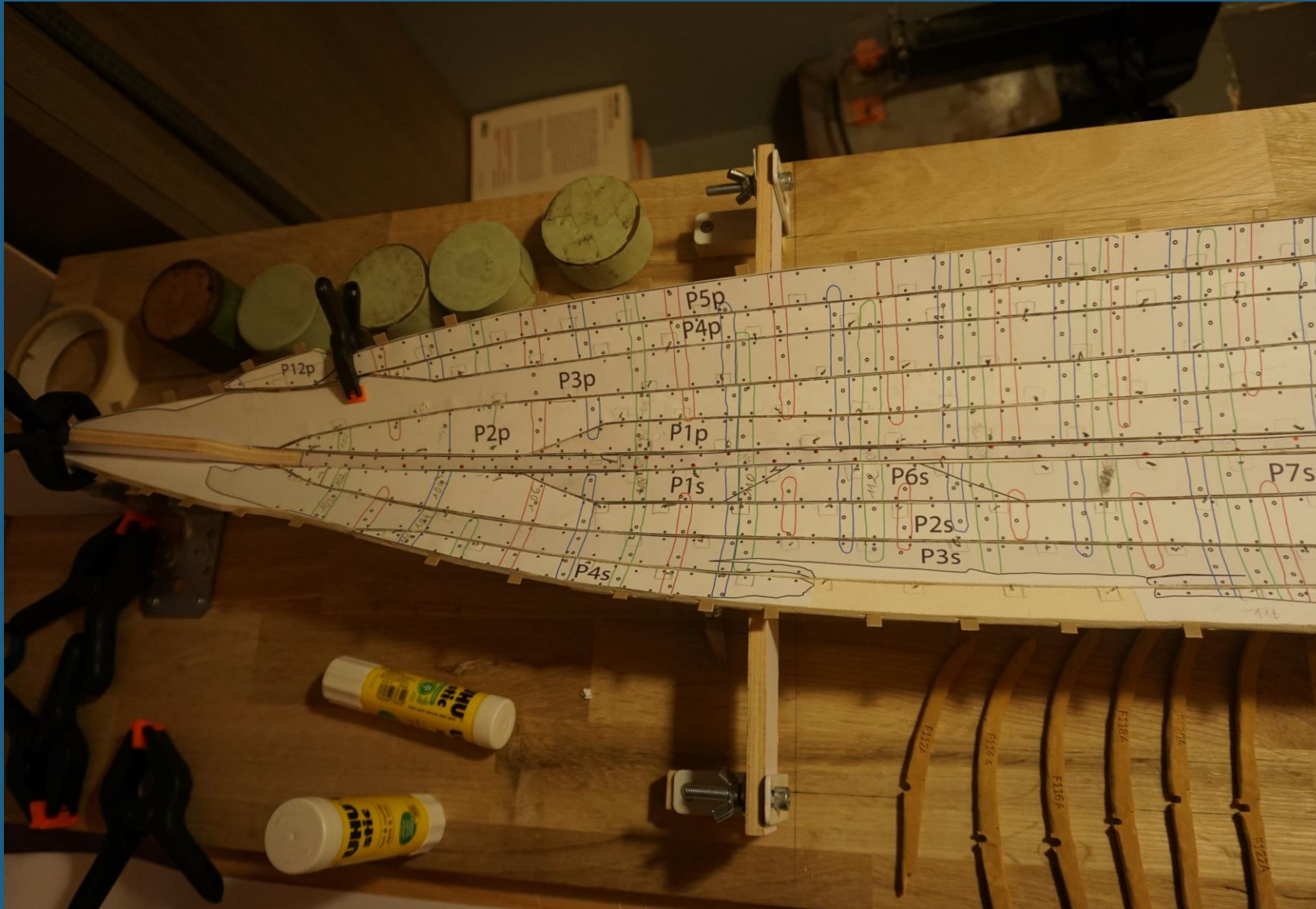




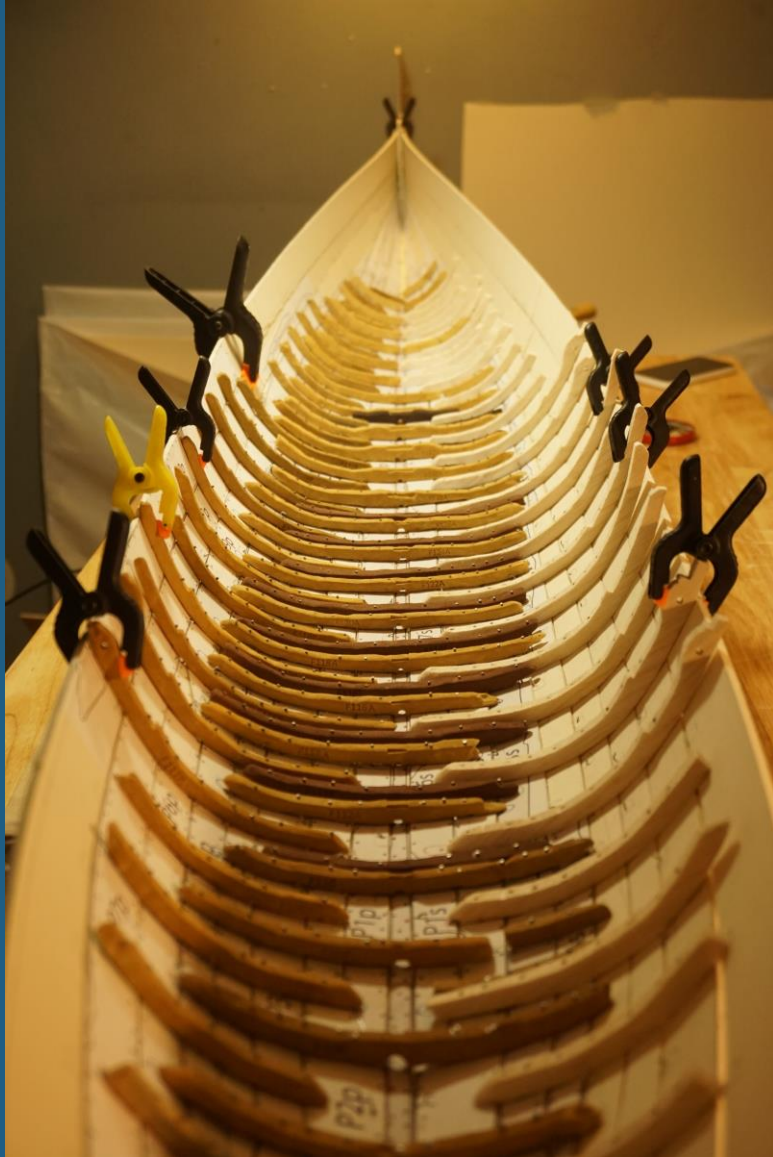


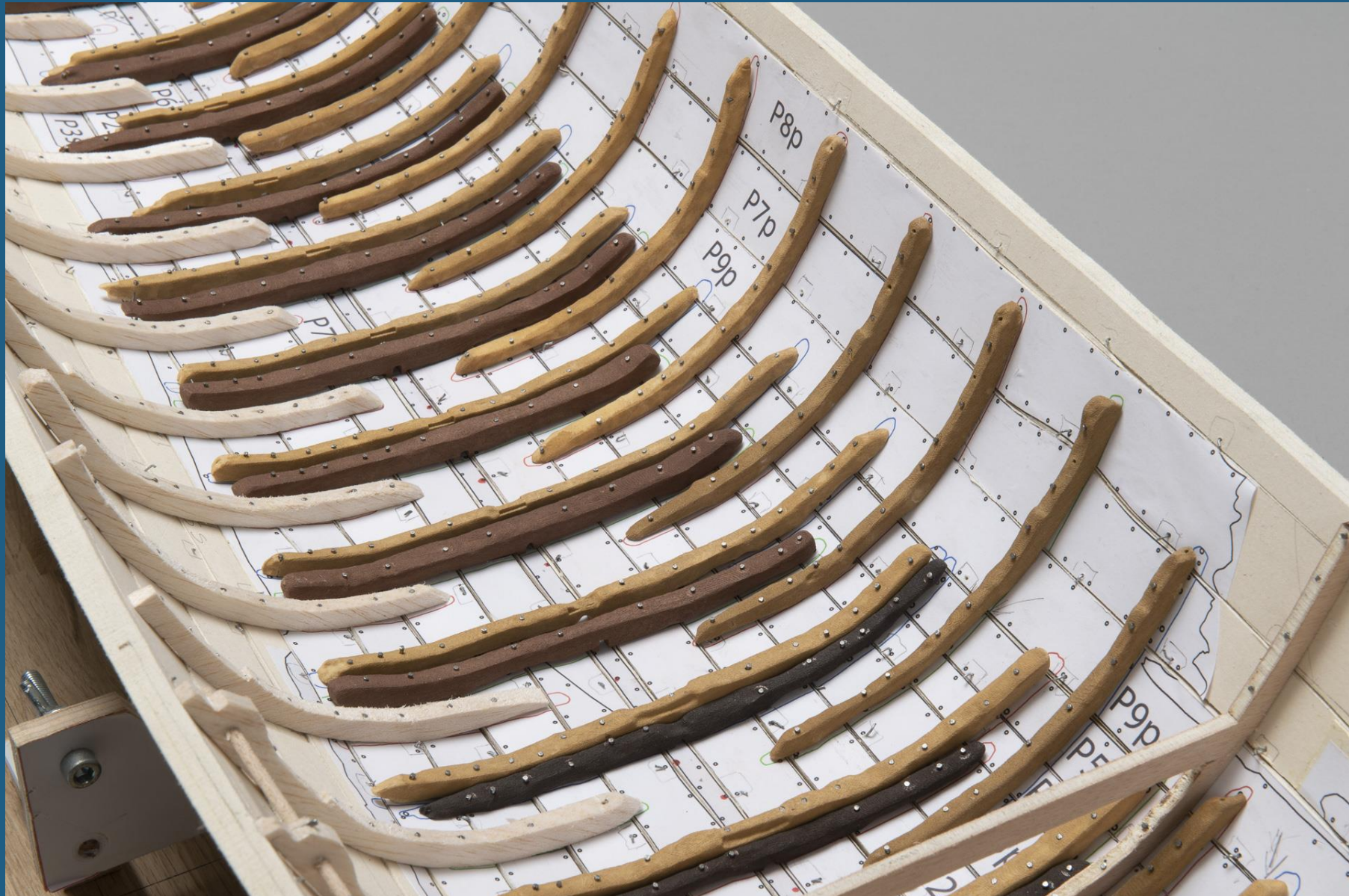




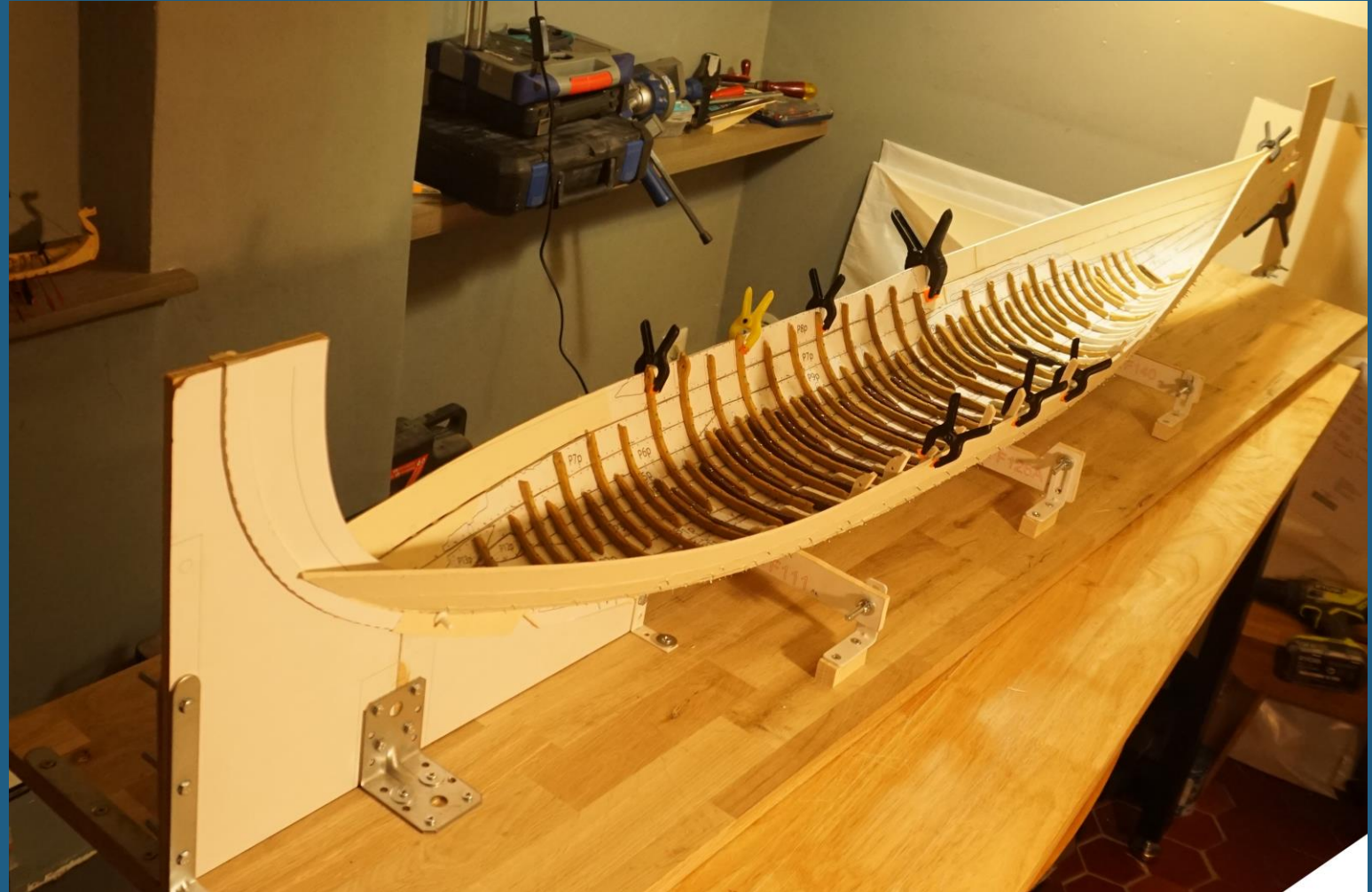




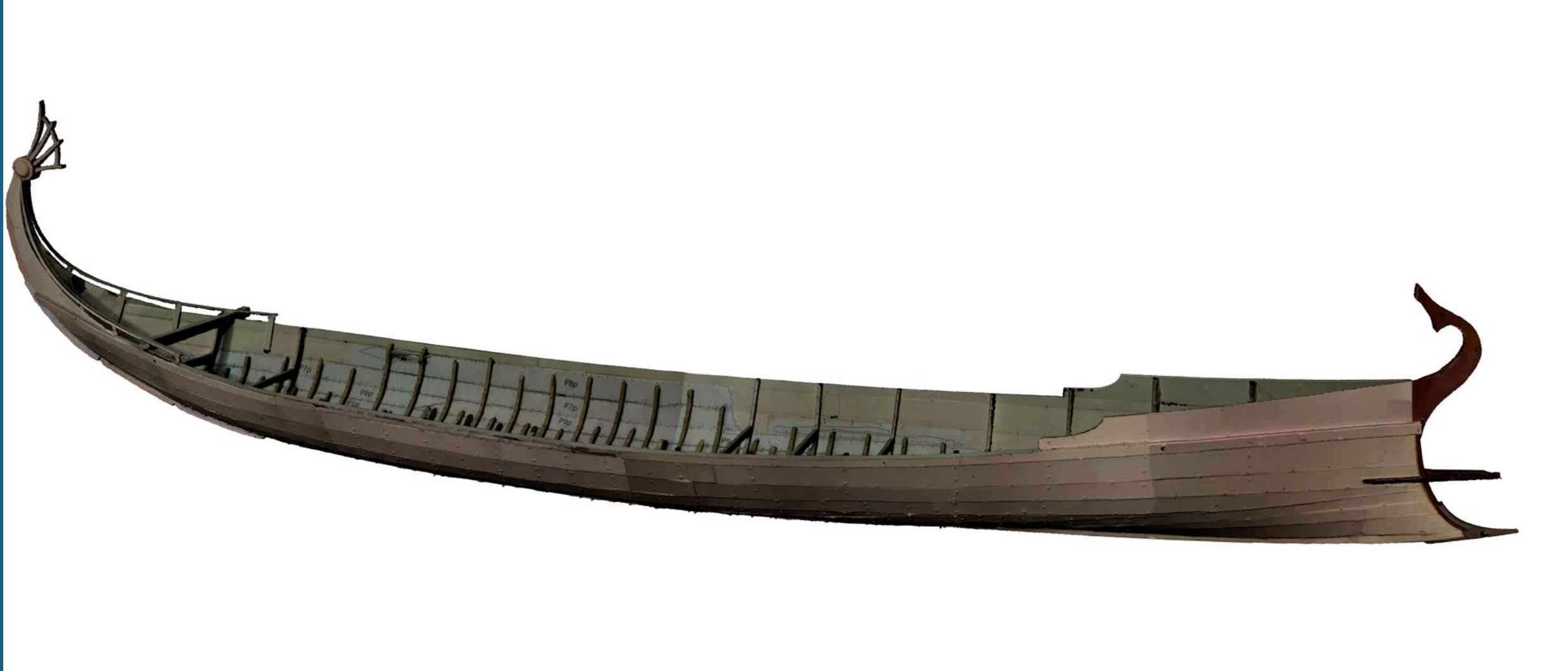


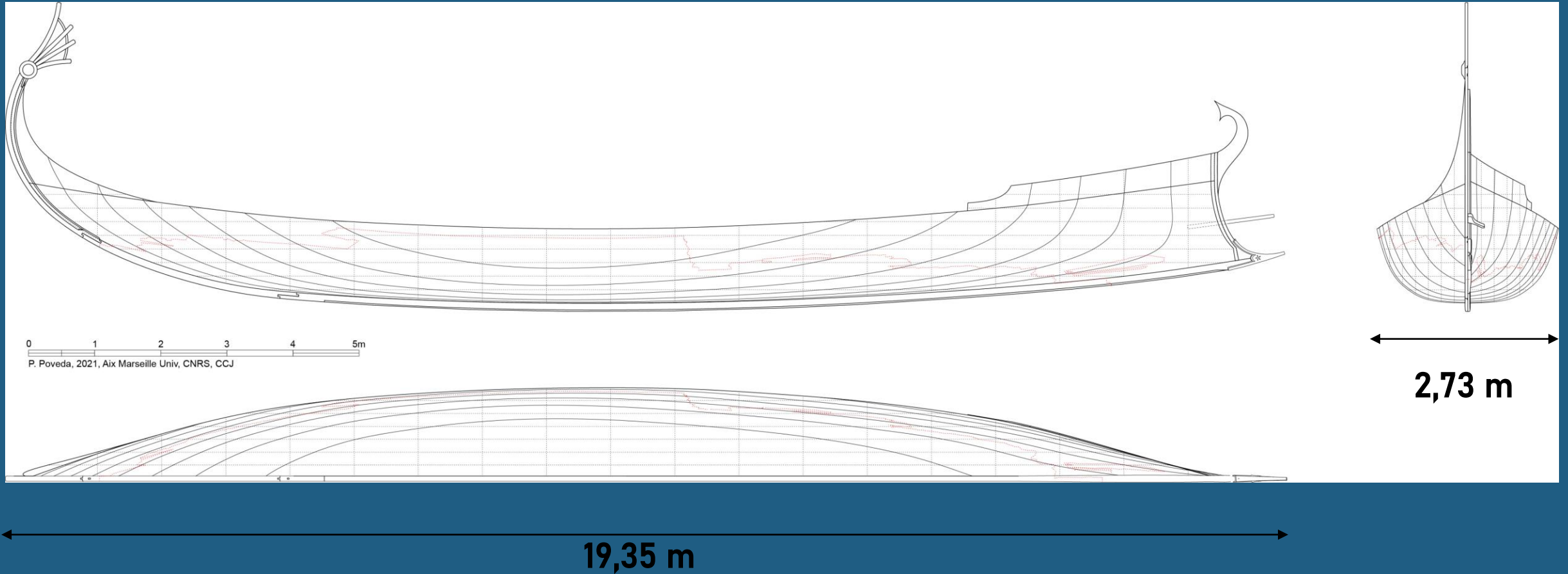


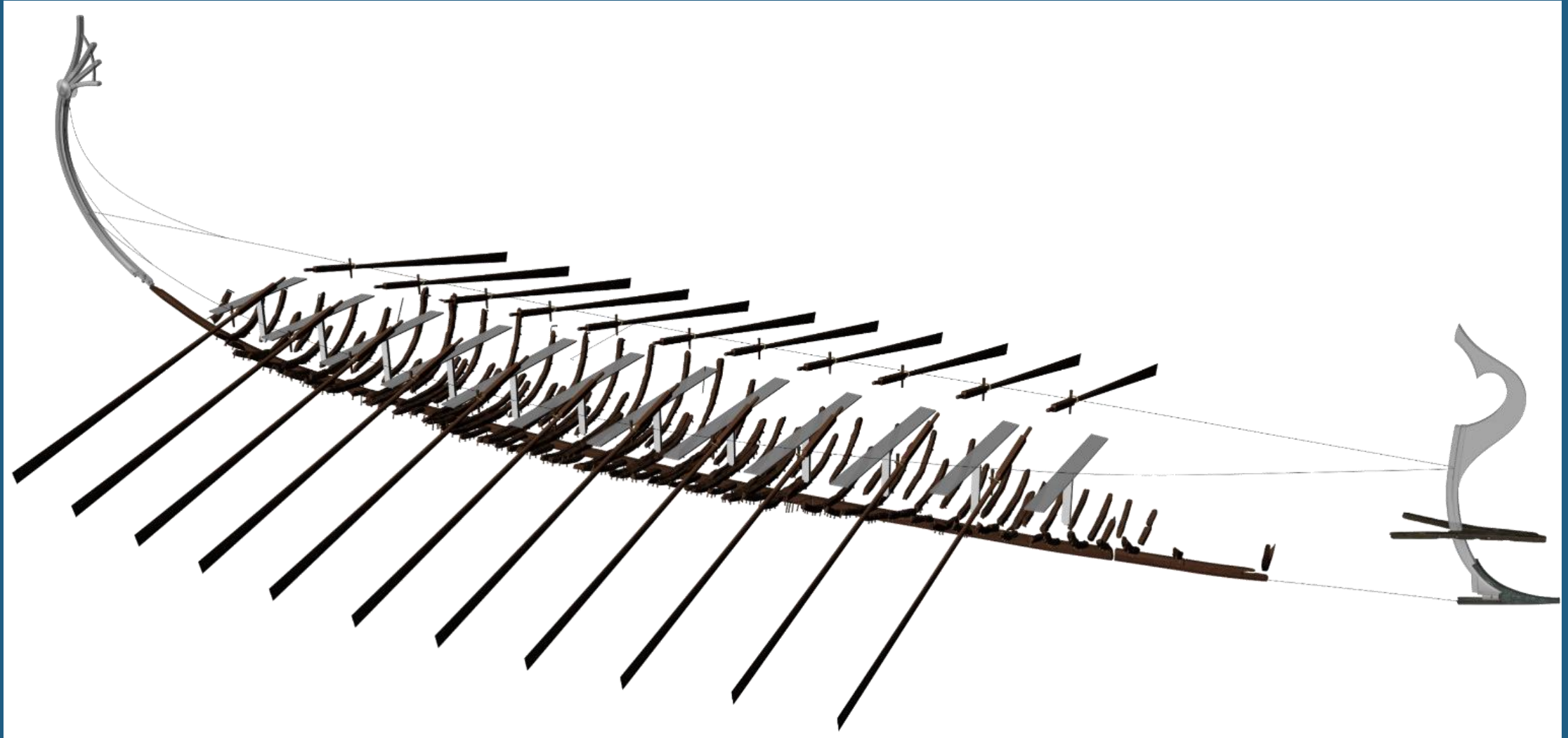


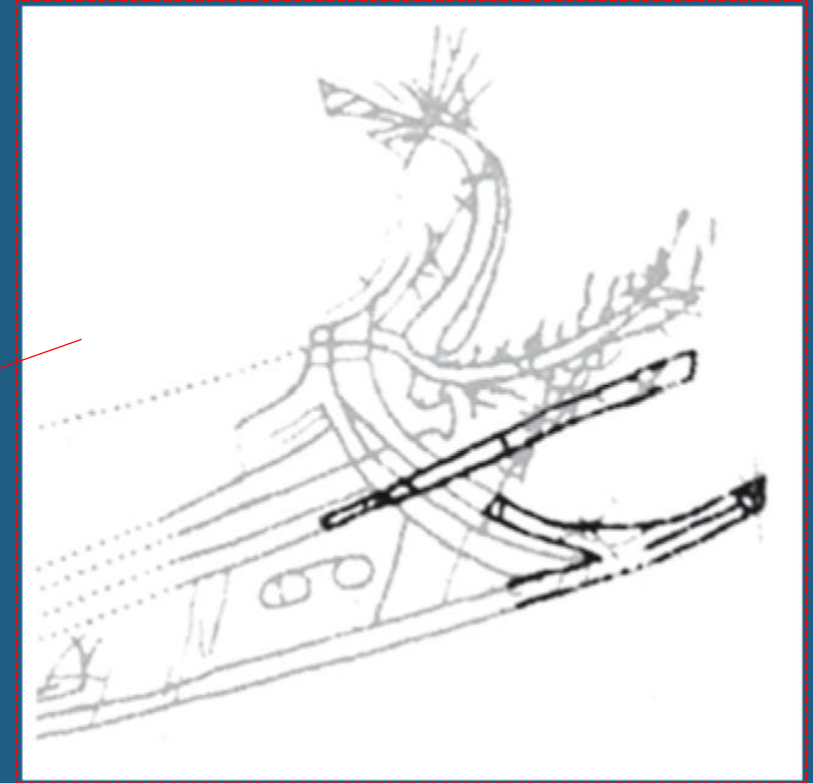
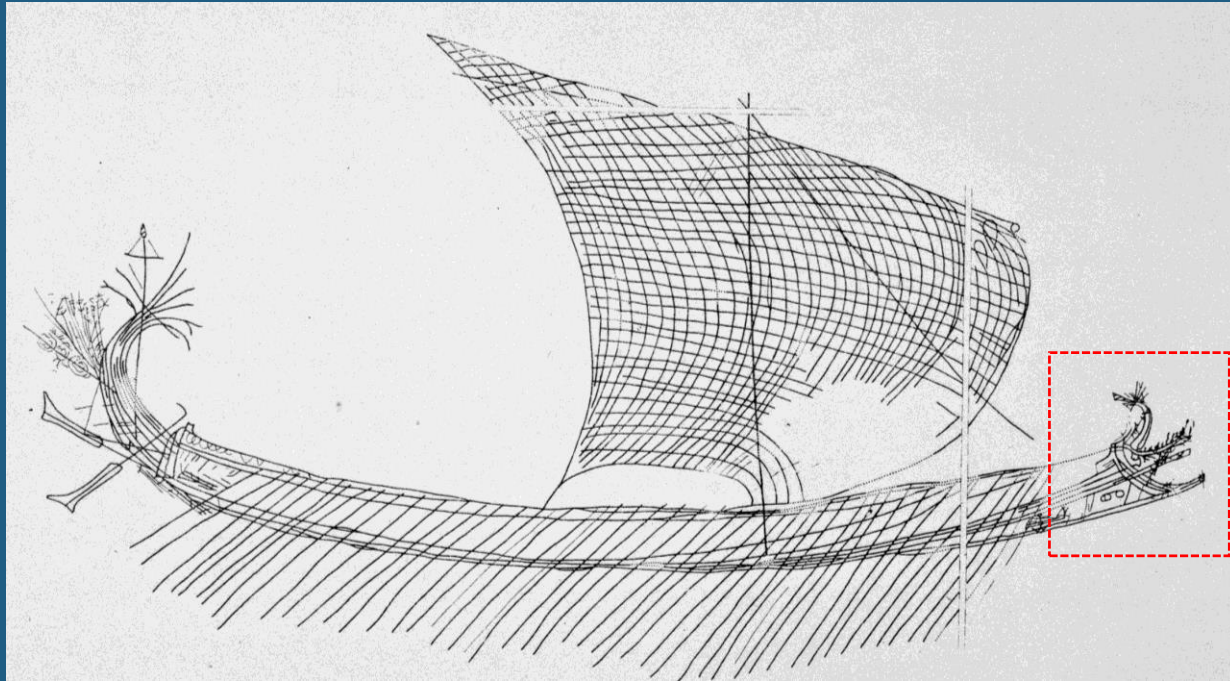














To be **Continued...**

**Thanks** for your attention!

