

XVII Rassegna internazionale d'archeologia subacquea  
Giardini Naxos, 7-9 ottobre 2021

*Nuove ricerche d'archeologia navale nell'Adriatico nord-orientale*  
Giulia Boetto

CNRS, Aix Marseille Université, Centre Camille Jullian



## Il progetto ADRIBOATS

2007-2008: Relitto di Pakoštane, fine IV-inizi V sec. d.C.

2009-2017: Relitti e strutture portuali a Caska, isola di Pag, I-II sec. d.C.

2011-2013: Relitto di Zambratija, età del Bronzo

2013: Relitti di Pola, I-II sec. d.C.

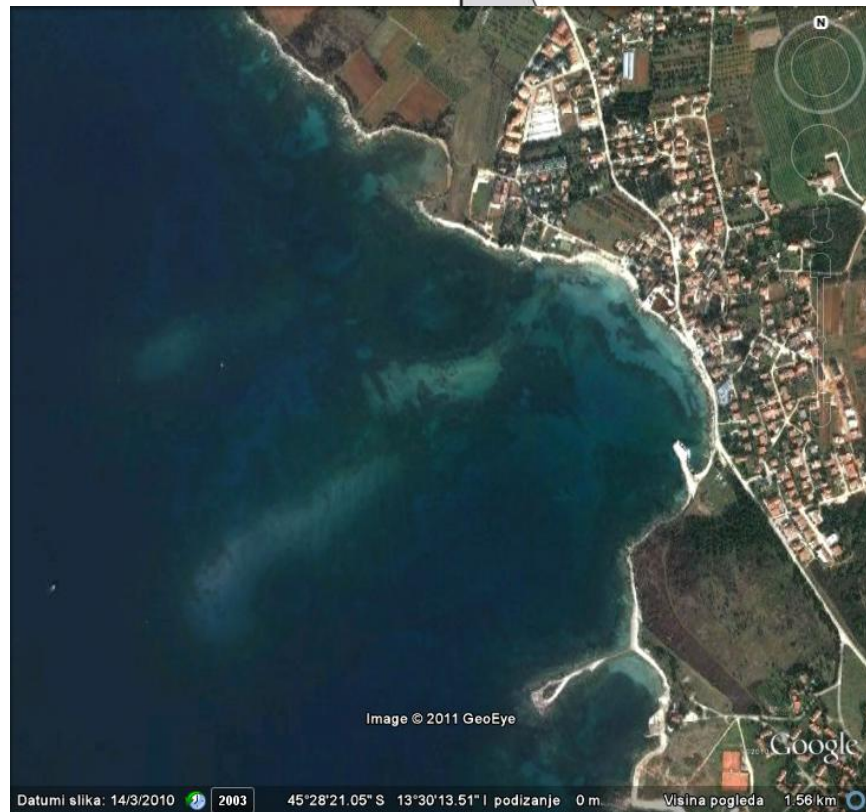
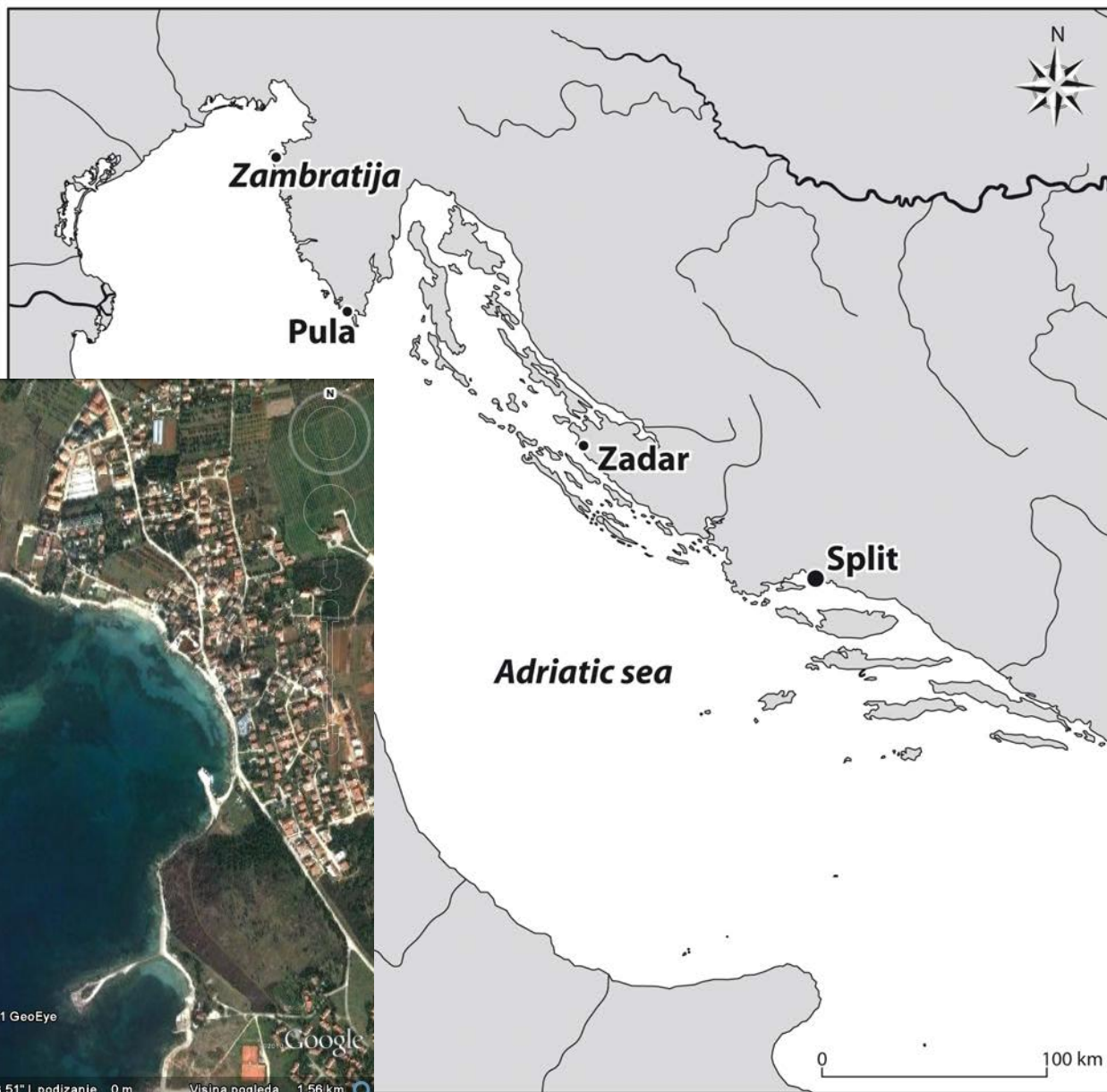
2015-2018: Relitto di Kamensko, fiume Kupa, II-III sec. d.C.

2017-2019: Relitto di Debeljak, fine IV-inizi V sec. d.C.

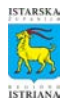
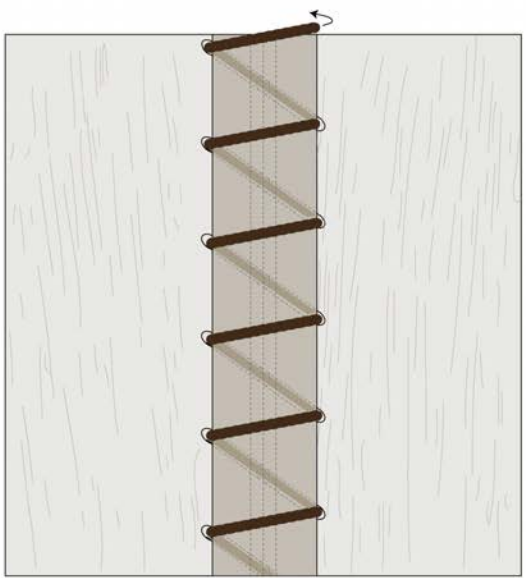
2018-....: Relitto di Ilovik-Paržine, fine II sec. a.C.

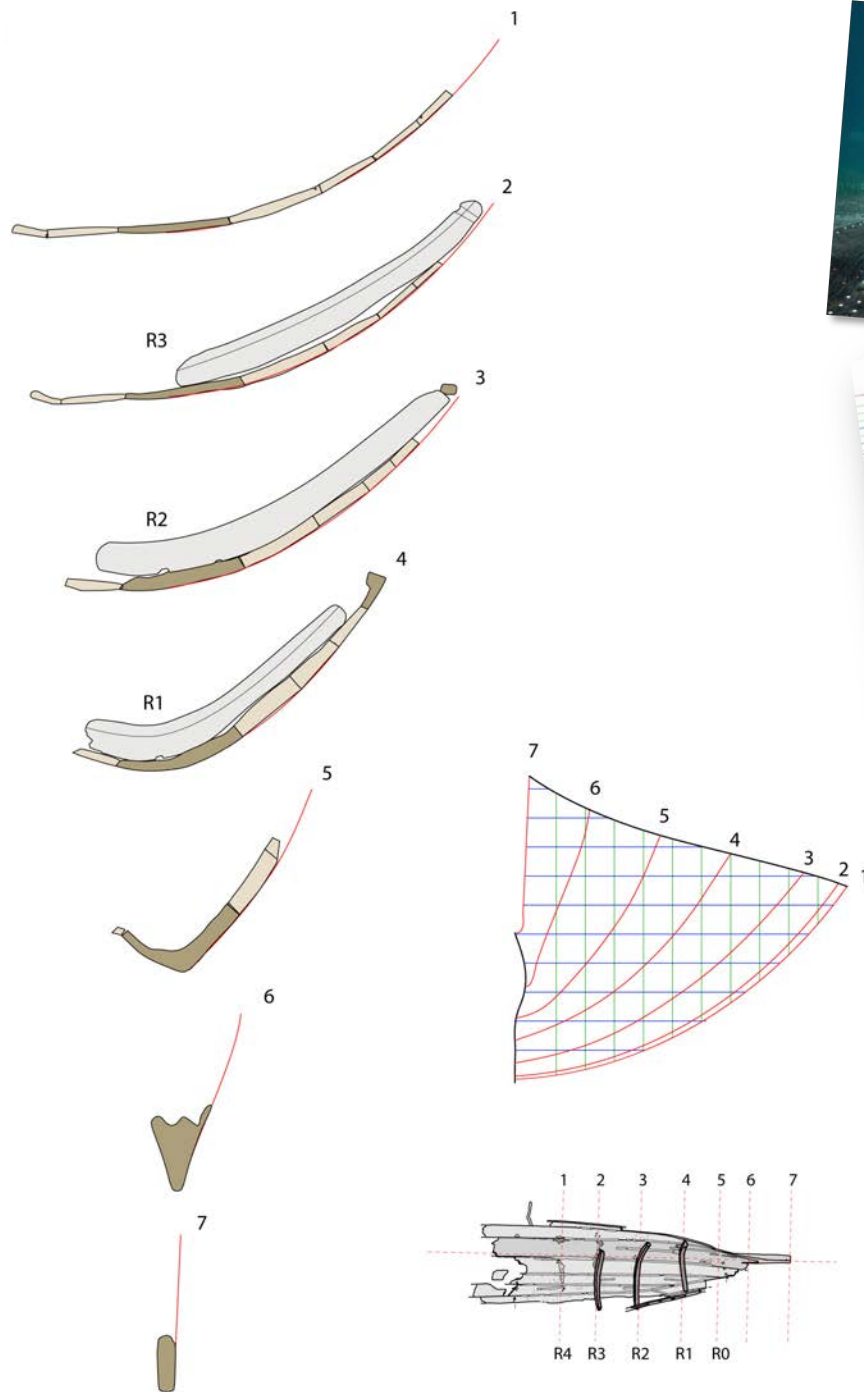
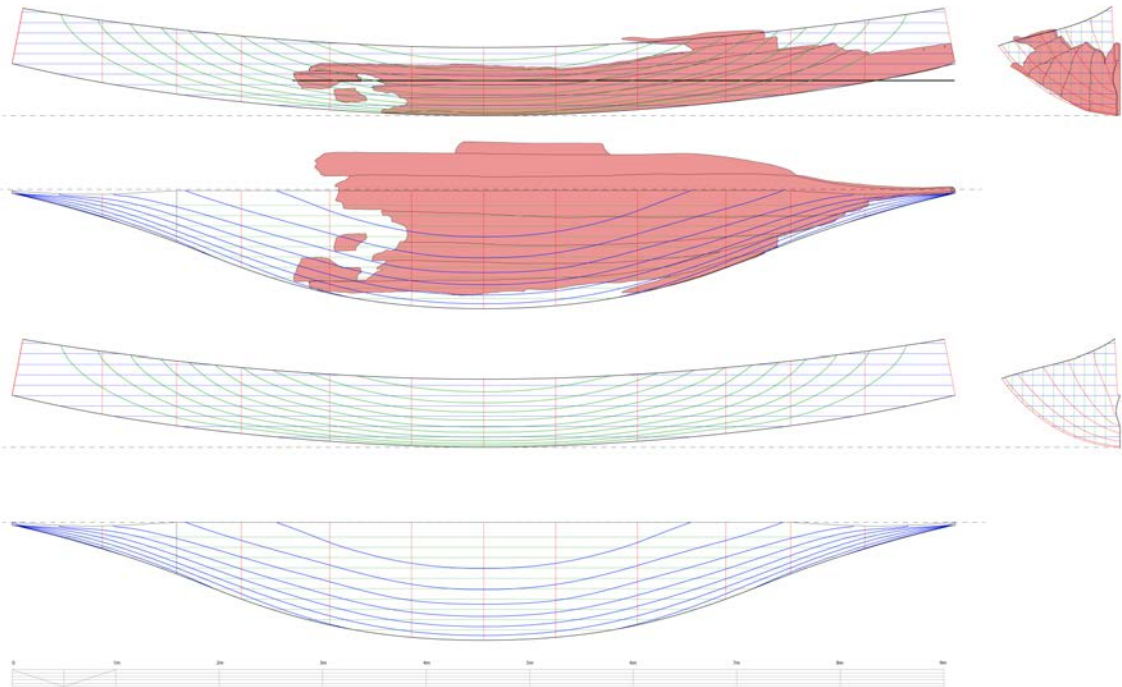
2020-....: Relitto di Poreč, I sec. d.C.

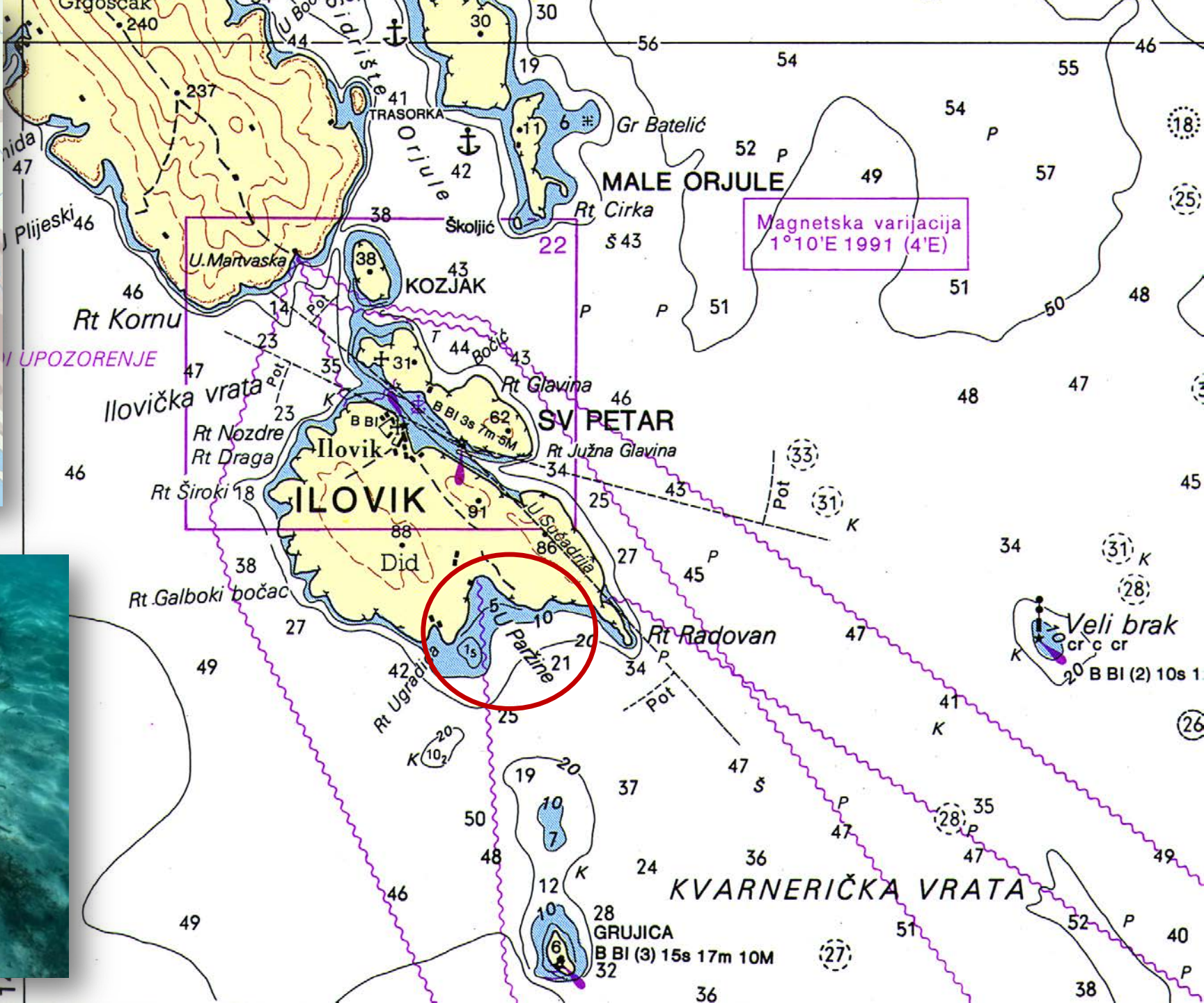


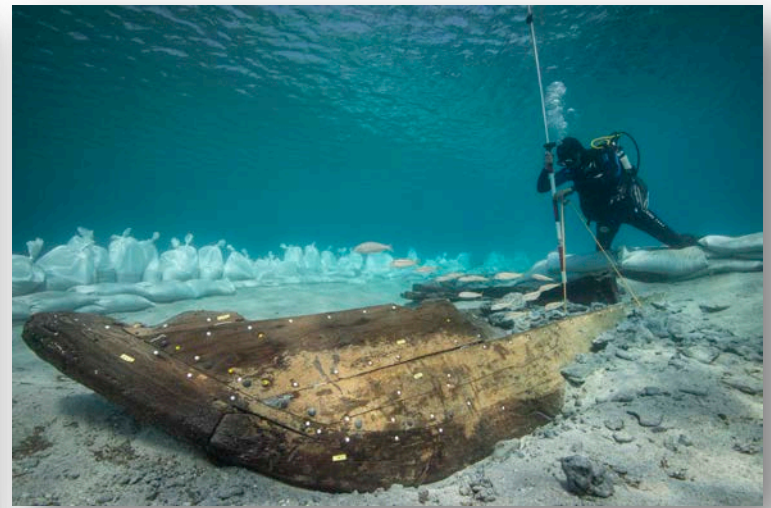


laboratory	year of the analysis	sample laboratory number	conventional radiocarbon age	calibrated result	probability
Beta Analytics Inc. (Miami)	2011	Beta-296186	2860 ± 30 BP	Cal BC 1120 – 930	95 %



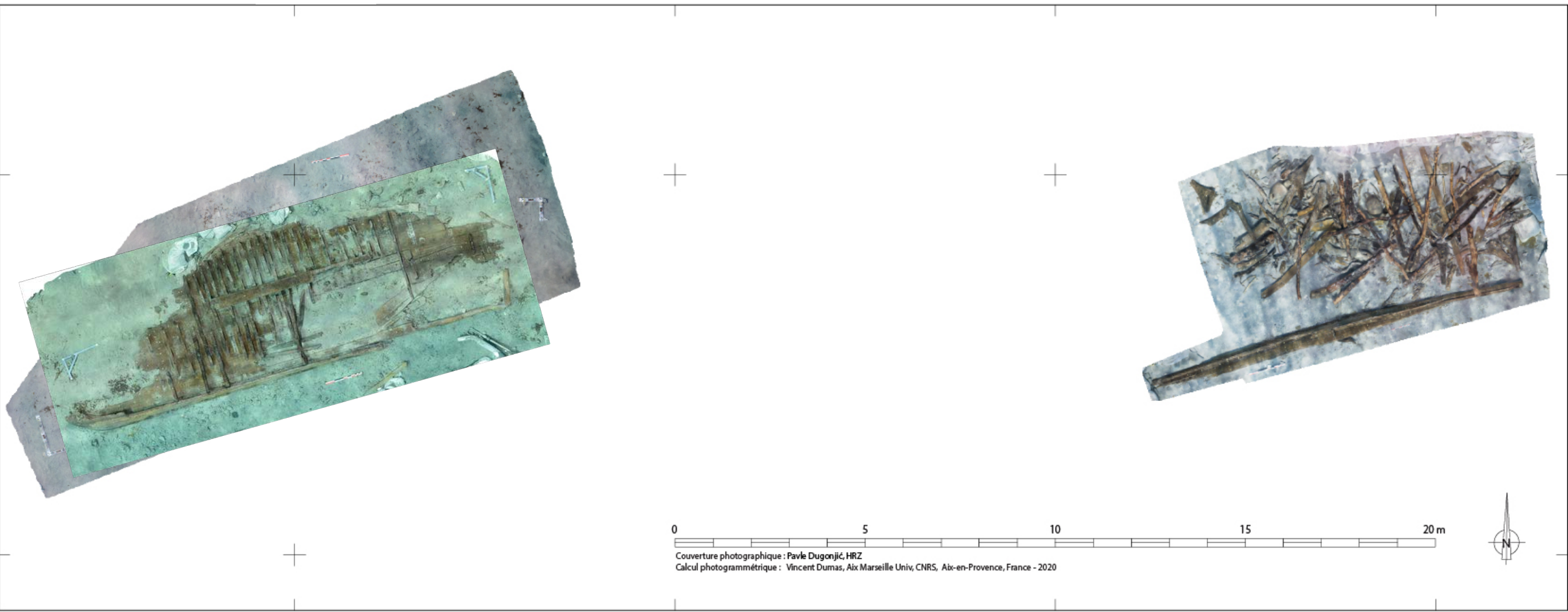






**2021**  
**70 m<sup>2</sup>**

**2018-2019**  
**58 m<sup>2</sup>**

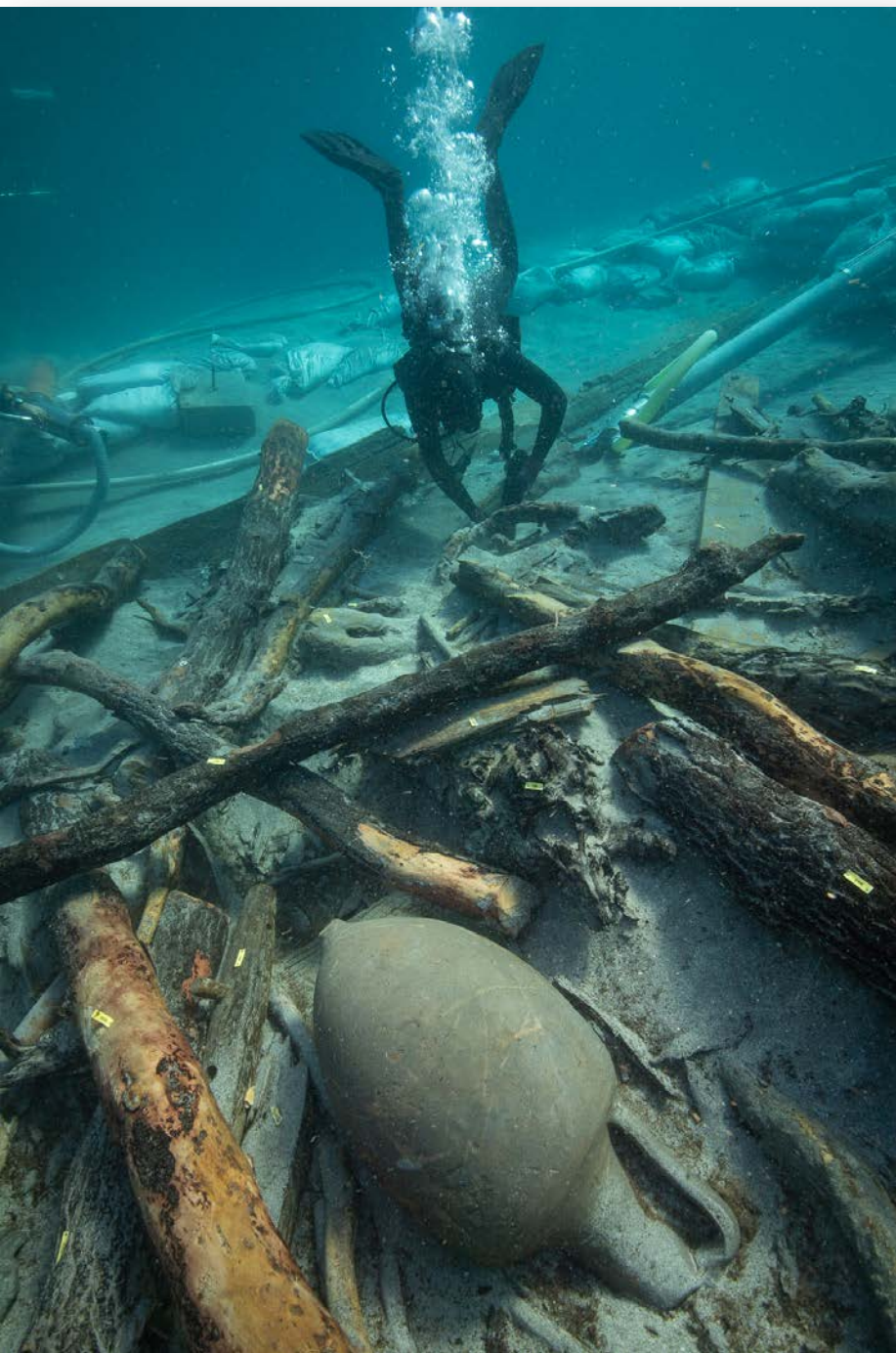


**POPPA**

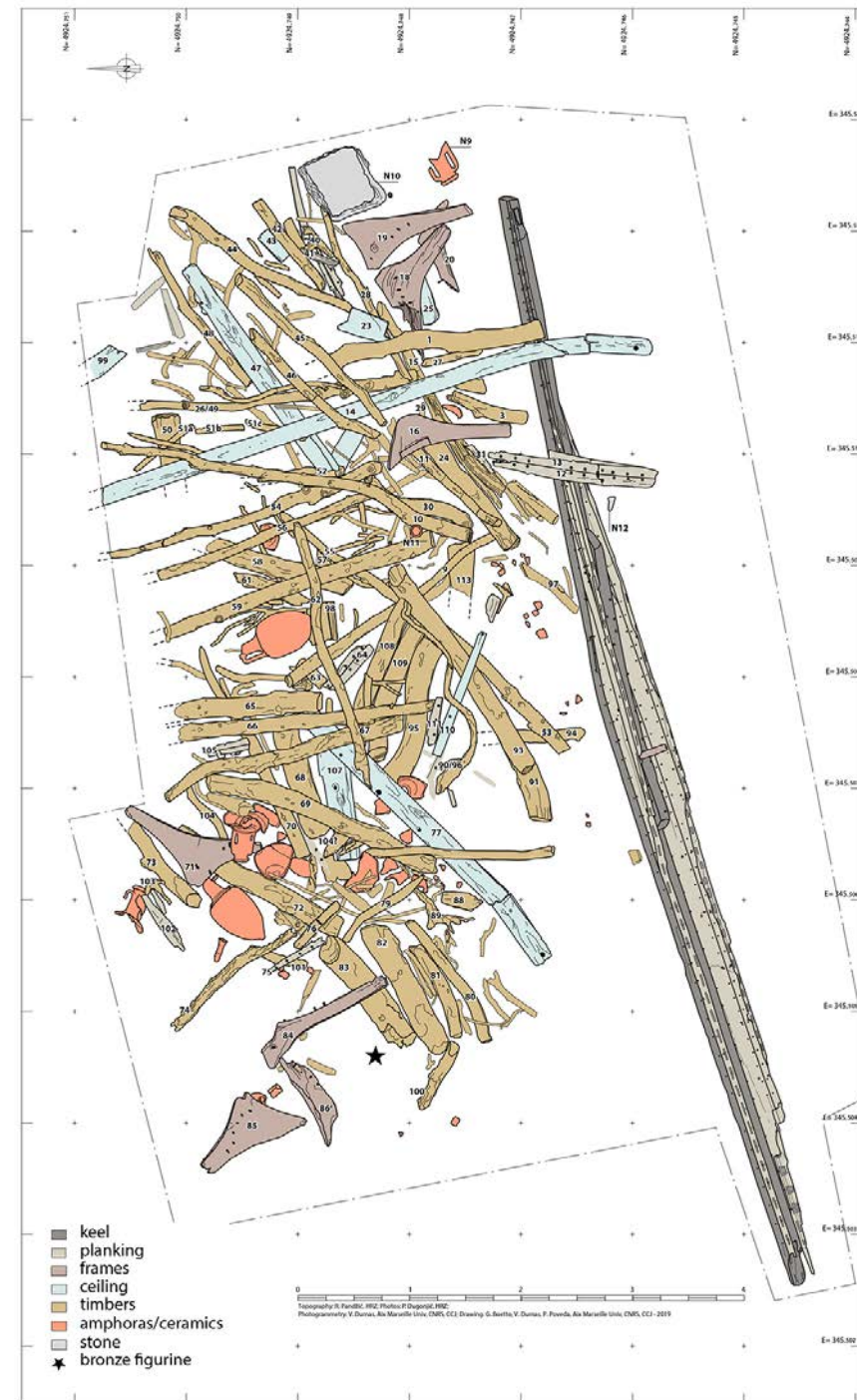
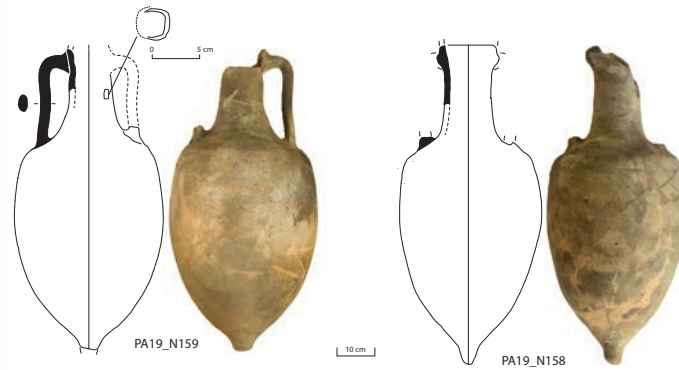
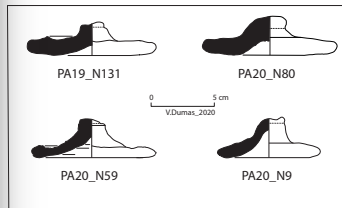
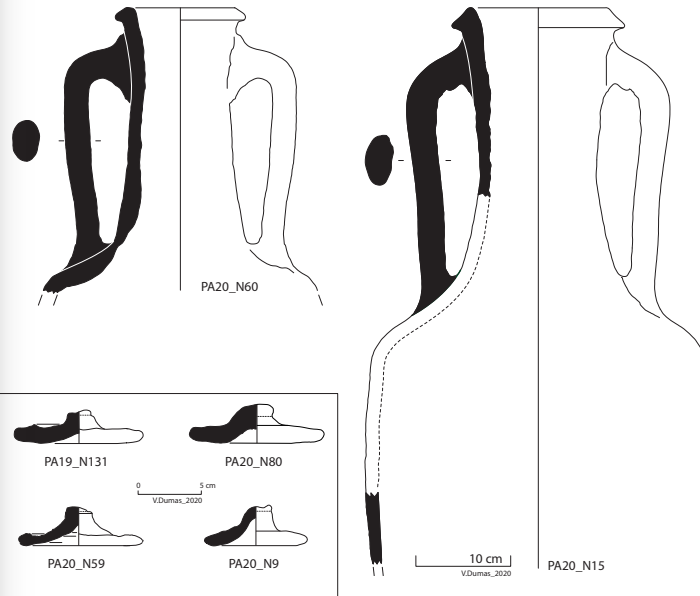
**distanza ~ 20 m**

**PRUA**





## carico: vino e legno



zavorra



**Statuetta in bronzo**

**divinità tutelare  
(Fortuna?)**





tenoni & mortase

sistema  
delle  
ordinate

alternanza tra  
**Madieri**  
**+staminali**  
&  
**semi-ordinate**

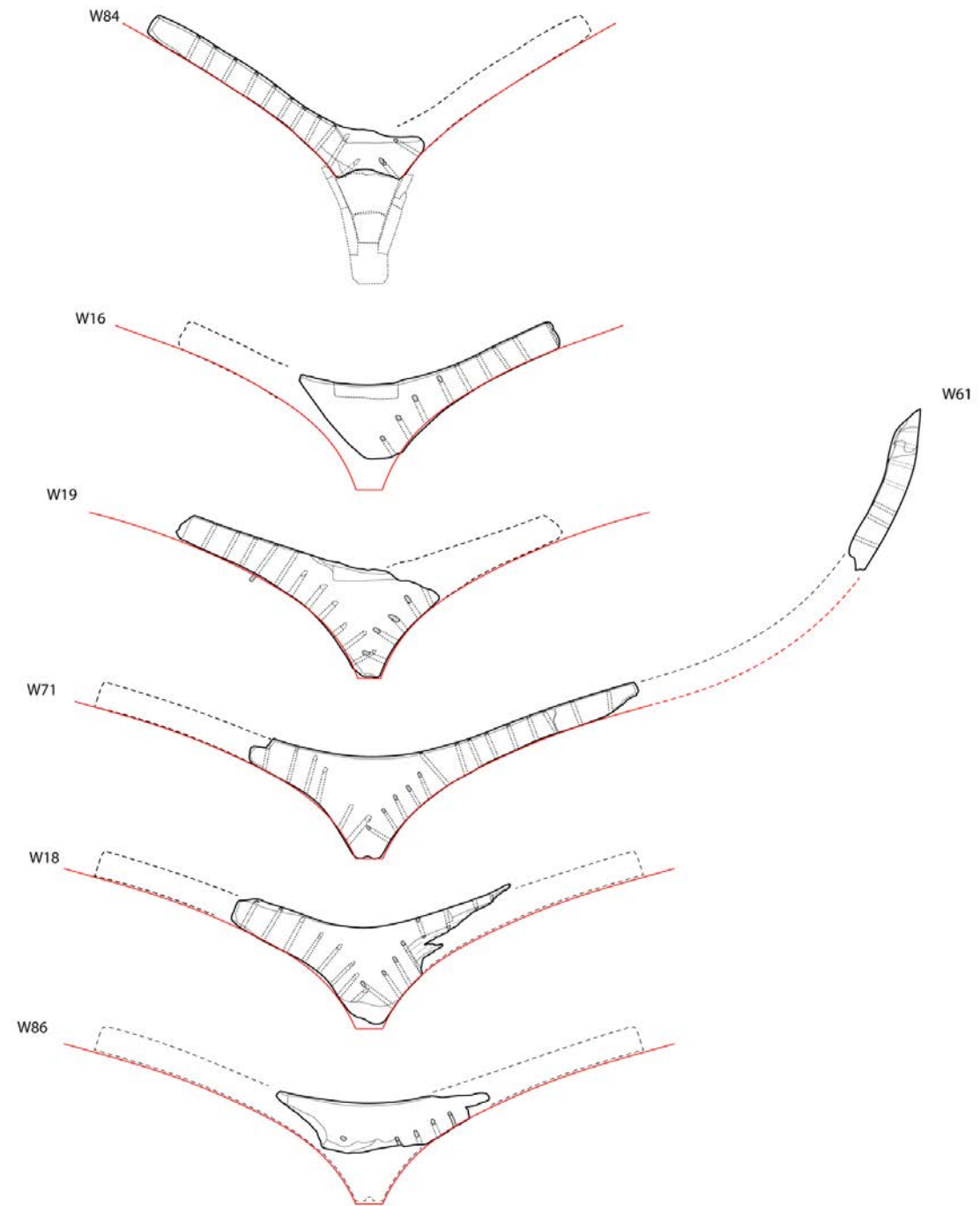




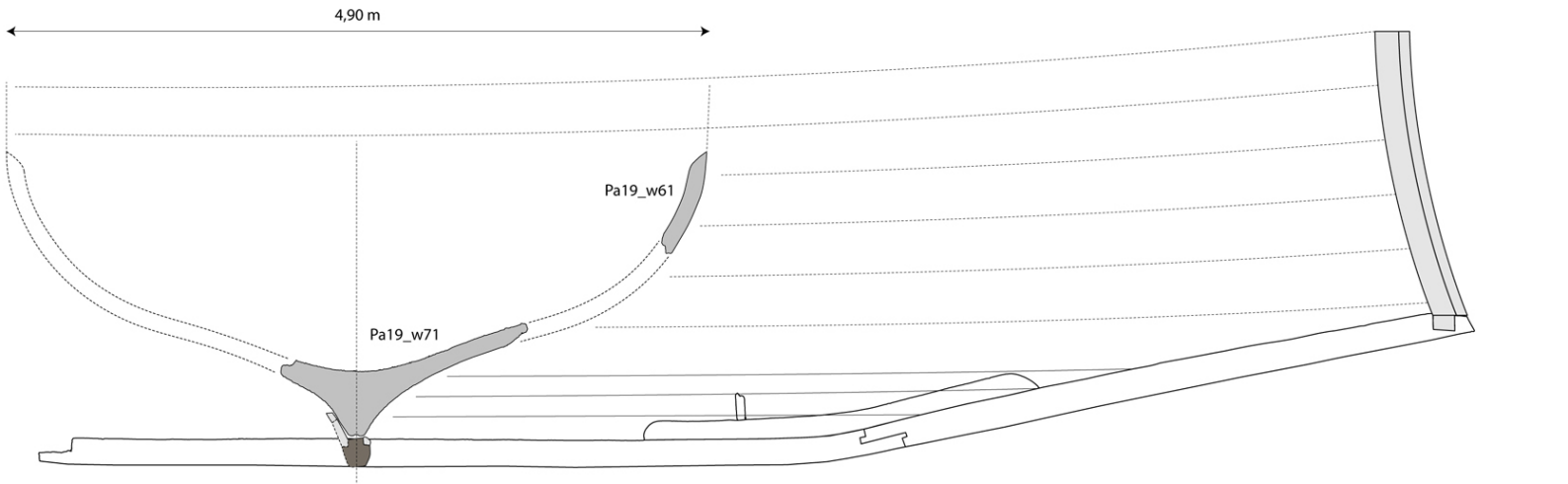
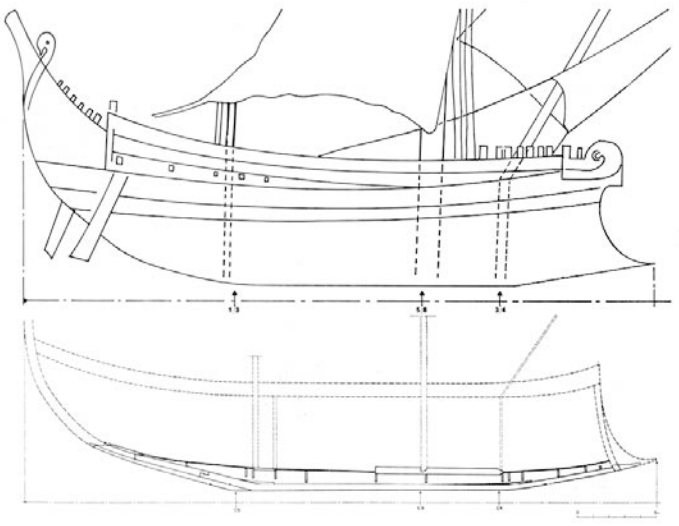
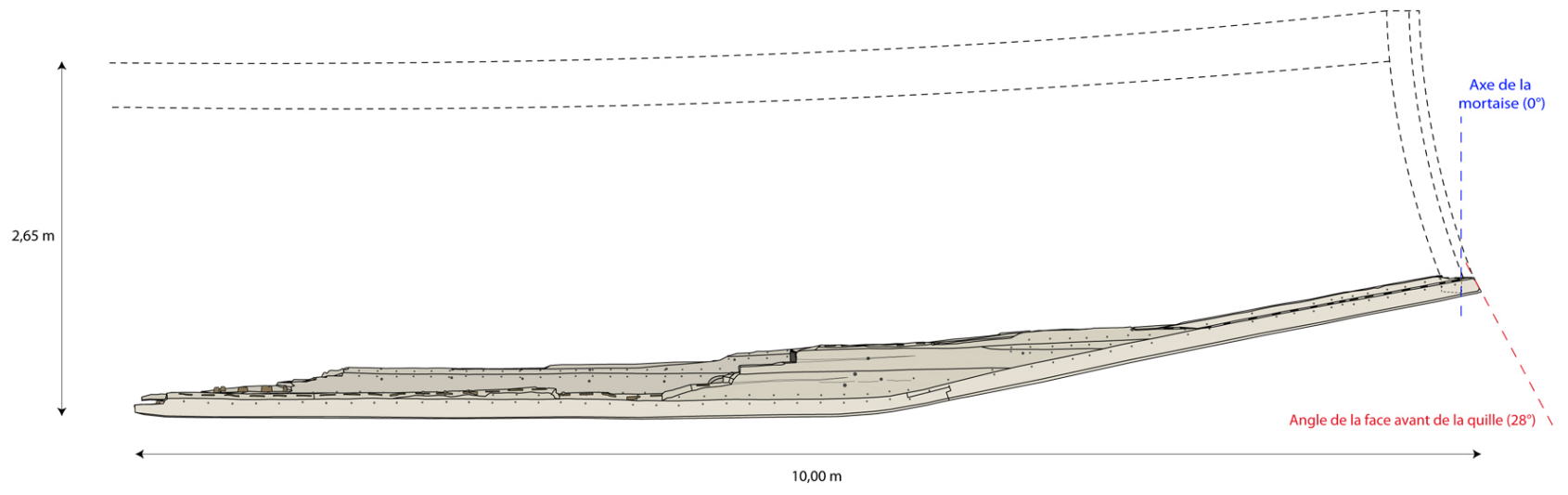
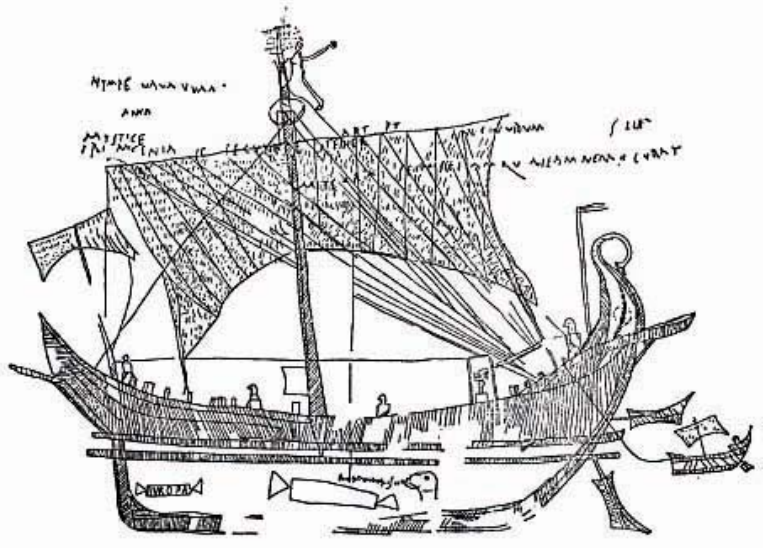


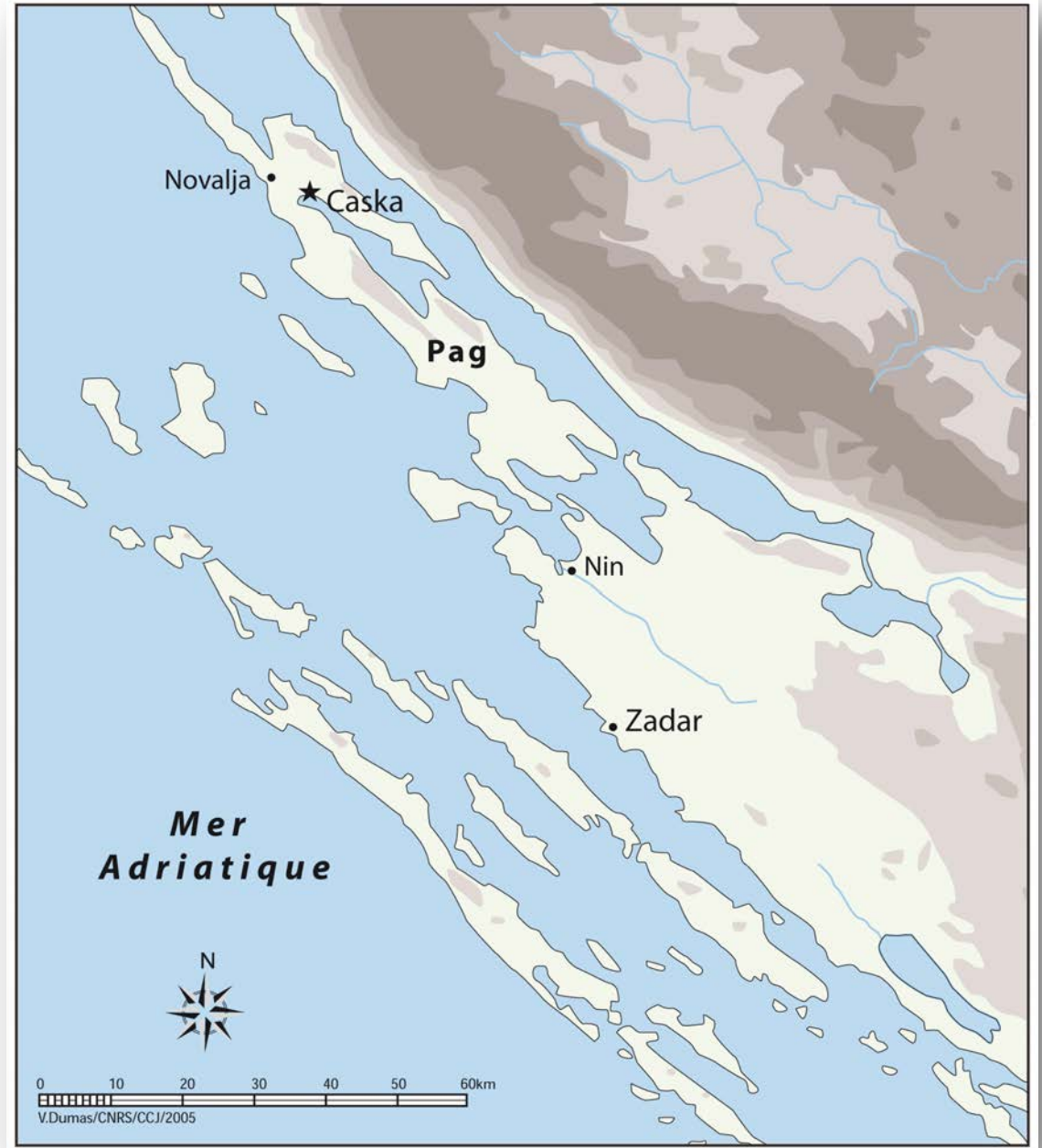
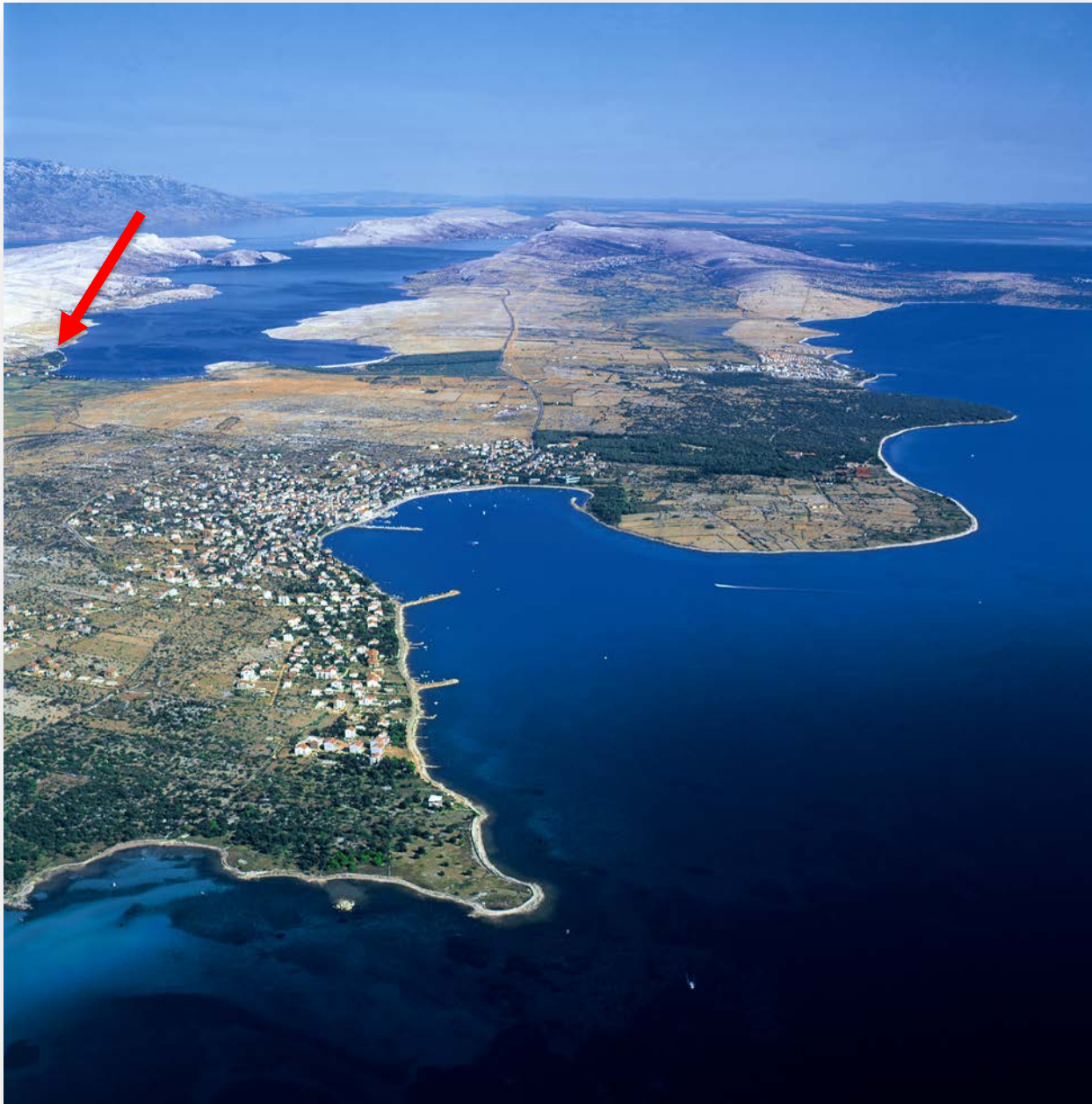


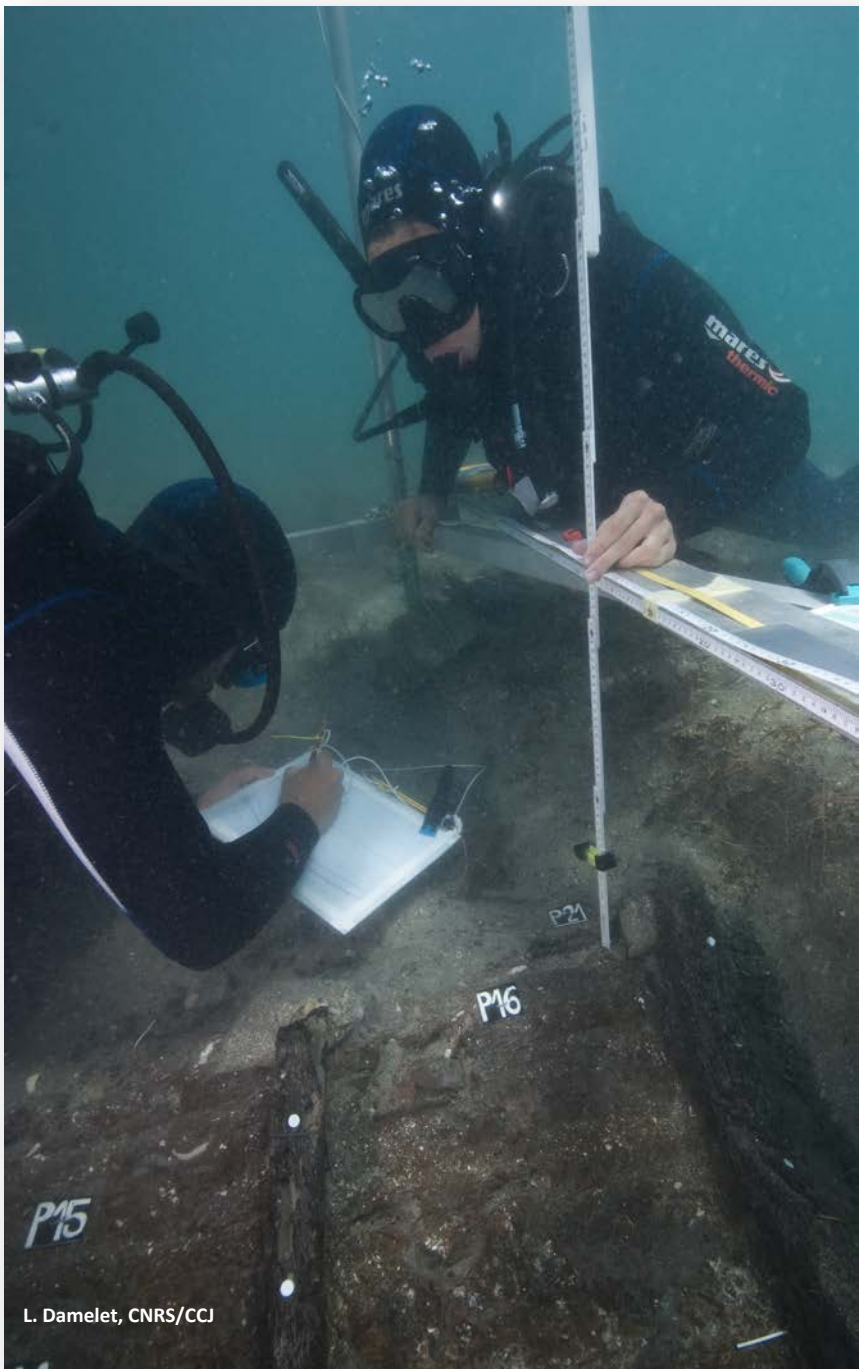
modello 3D di  
W71











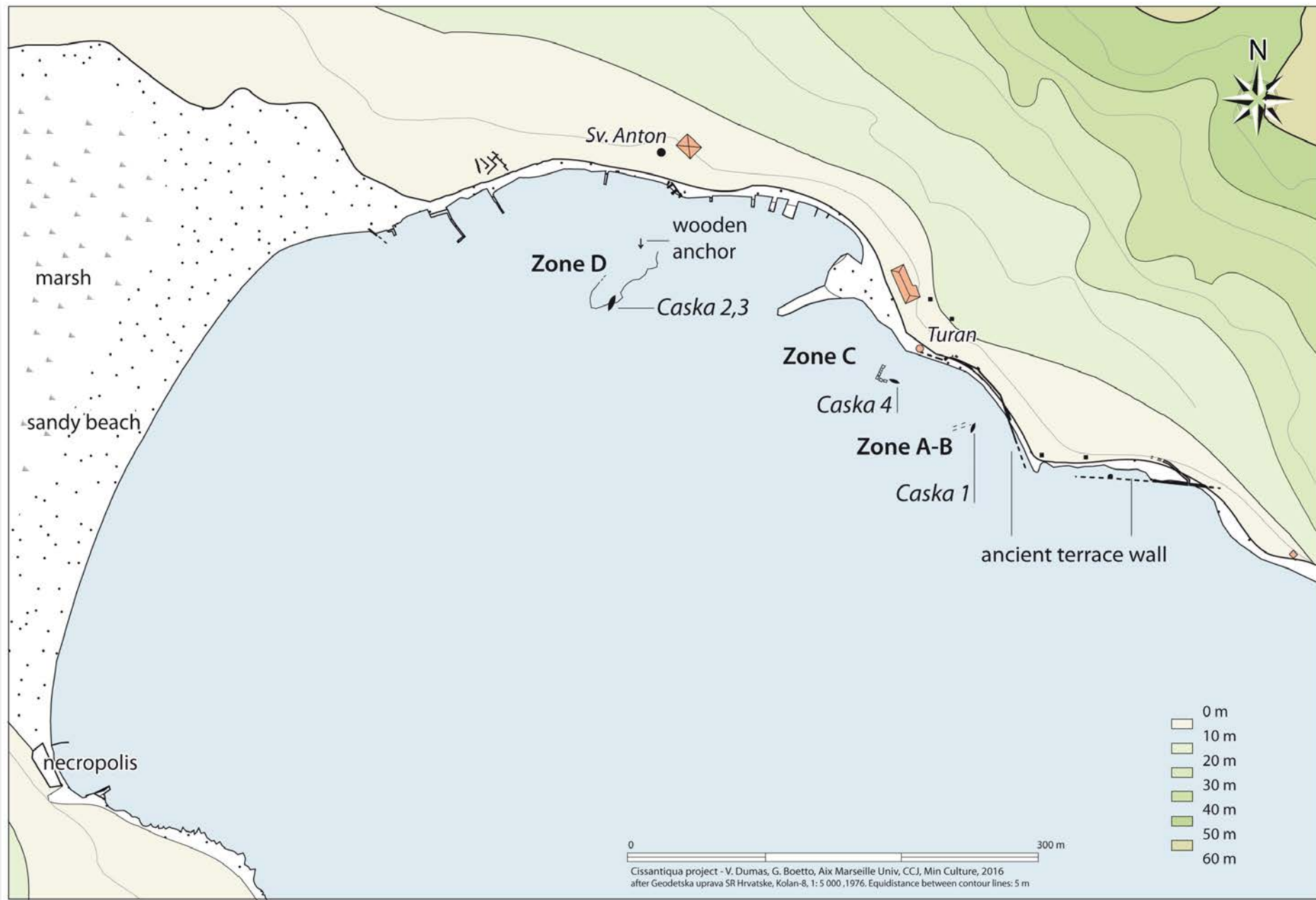
L. Damelet, CNRS/CCJ

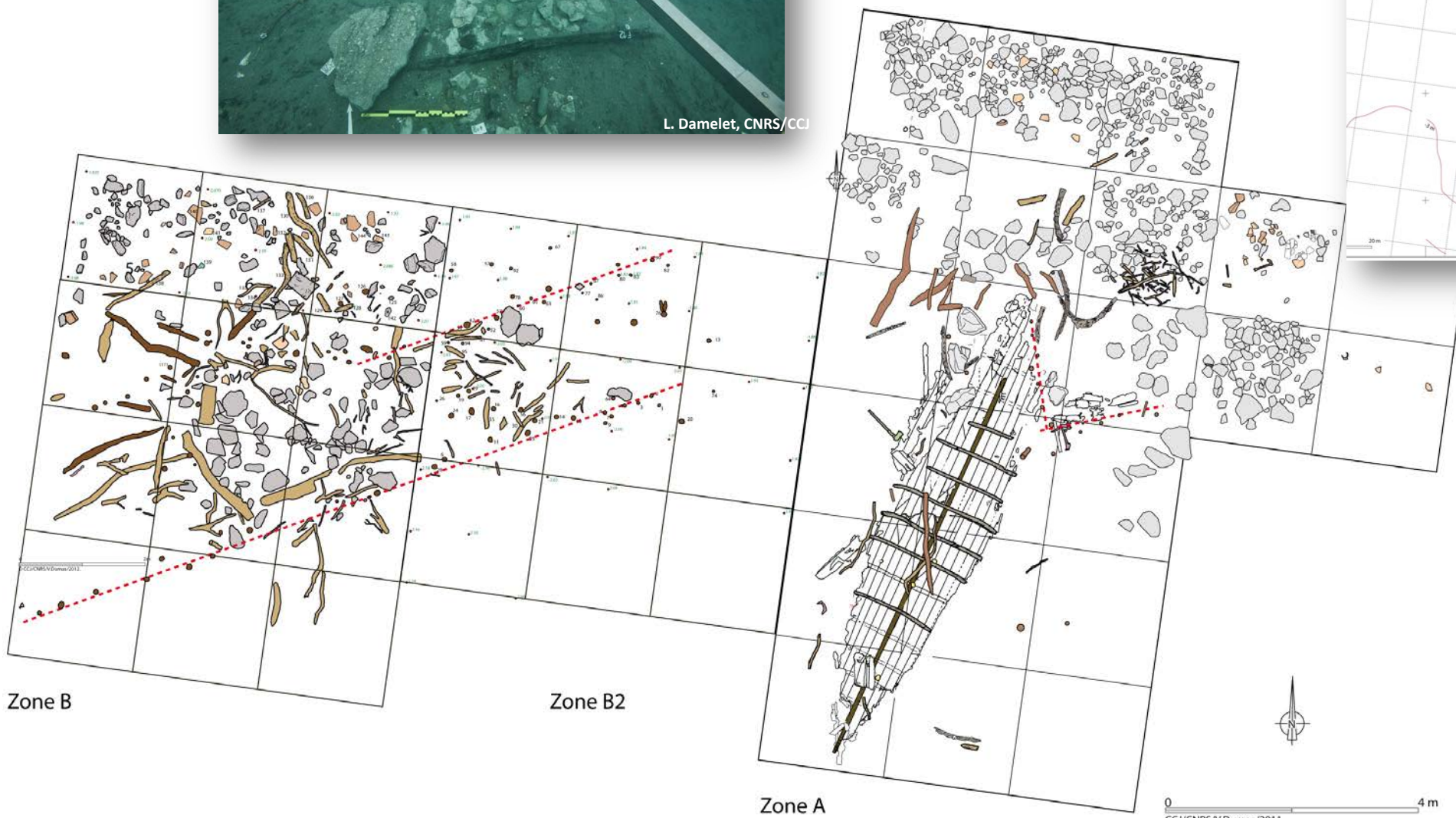
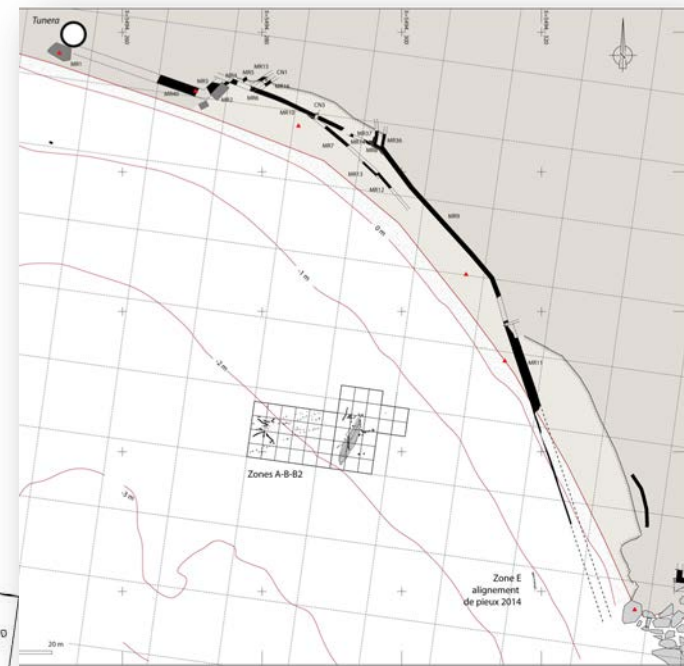


University of Zadar  
Universitas Studiorum  
Jadertina | 1396 | 2002

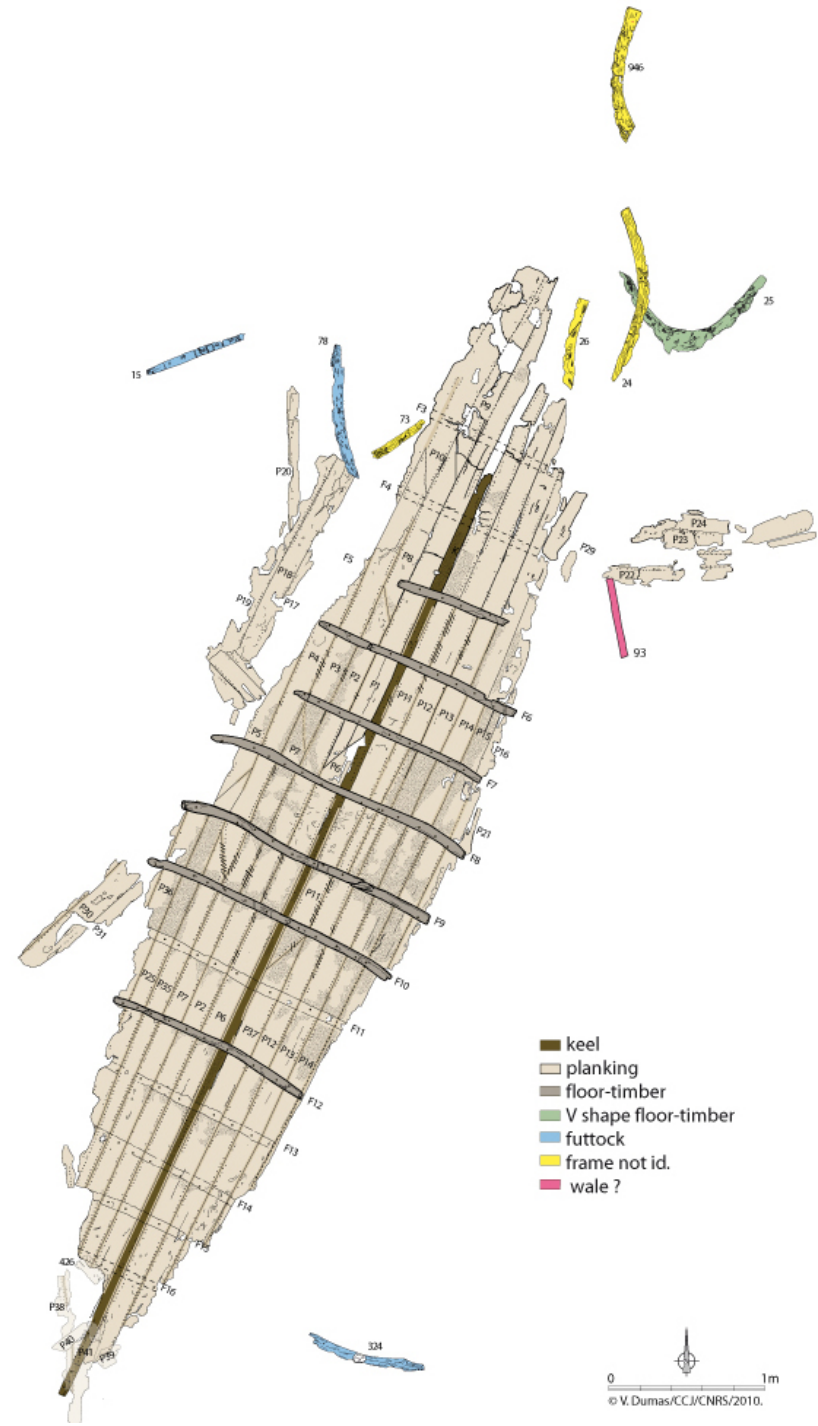


L. Damelet, CNRS/CCJ

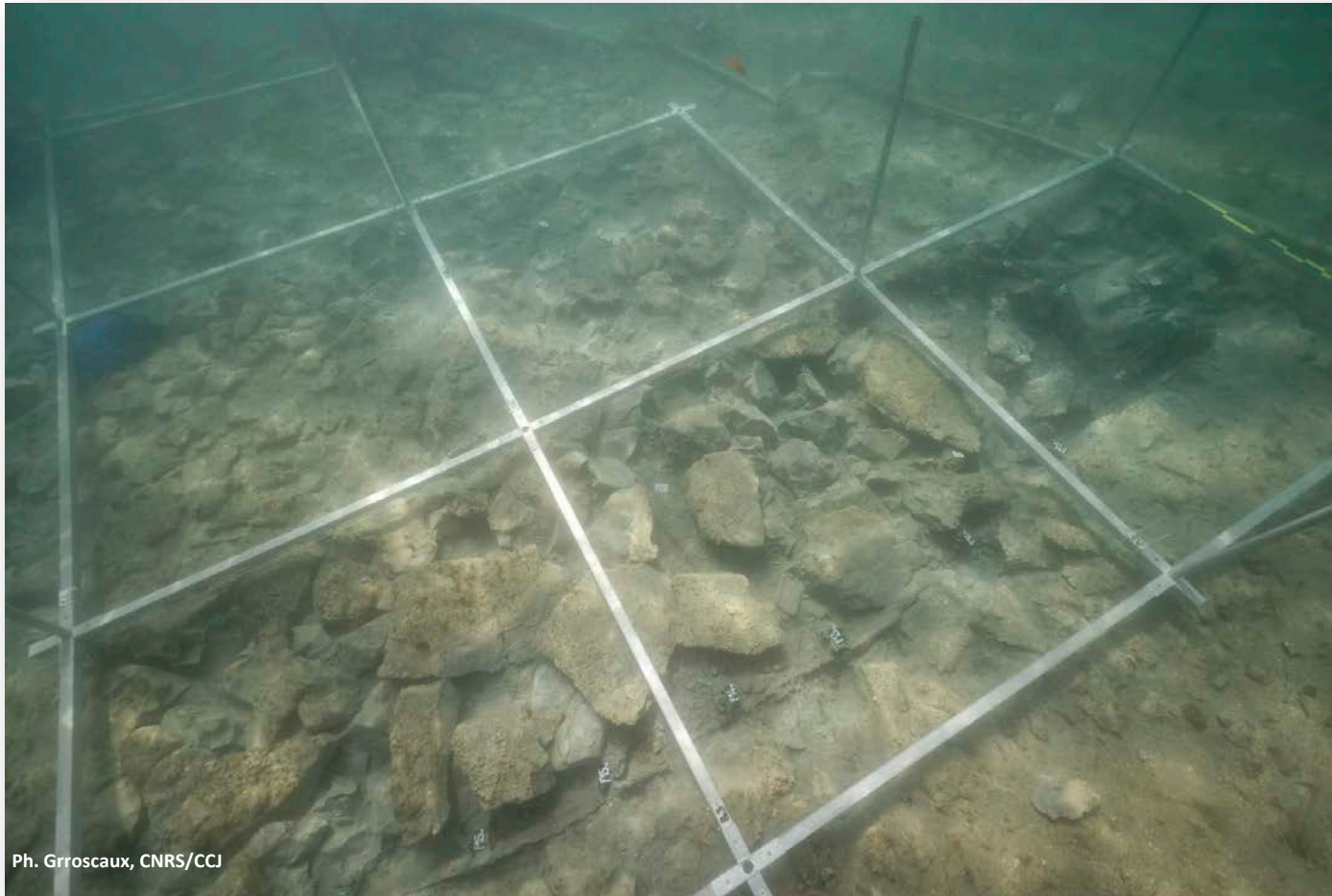




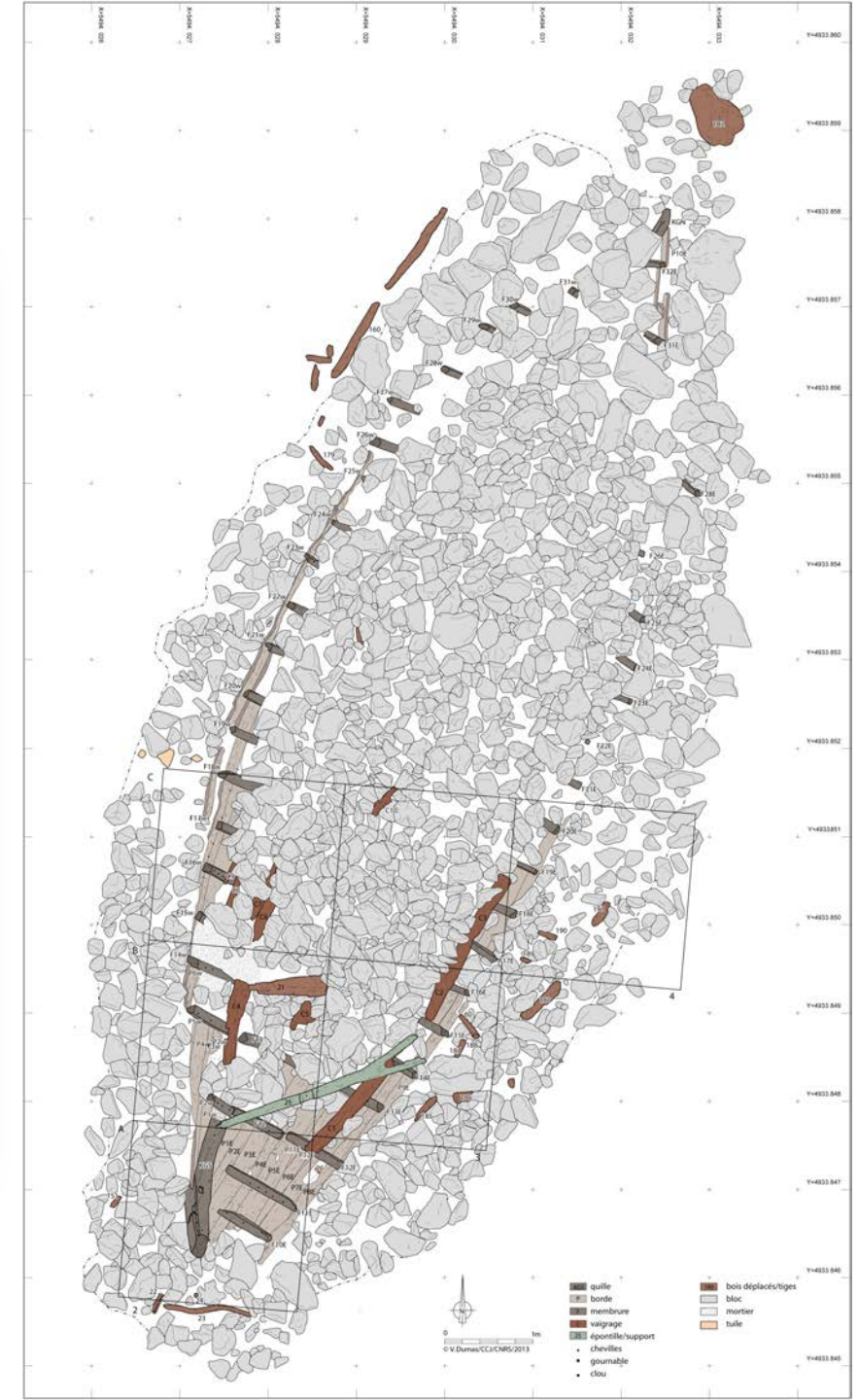
# Caska 1



# Caska 2



Ph. Groscaux, CNRS/CCI



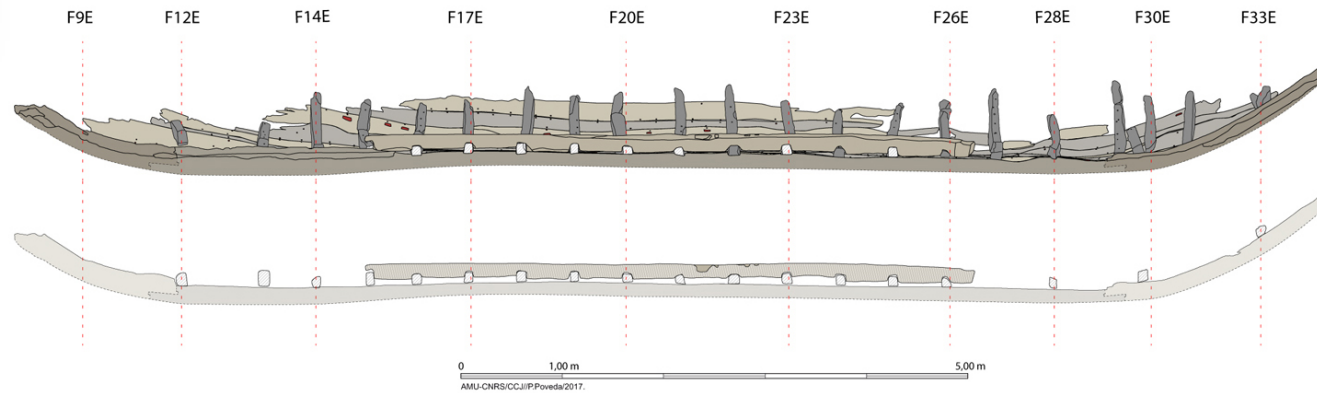
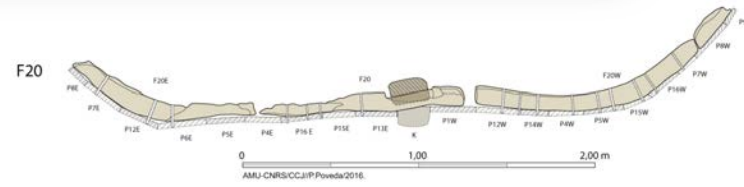
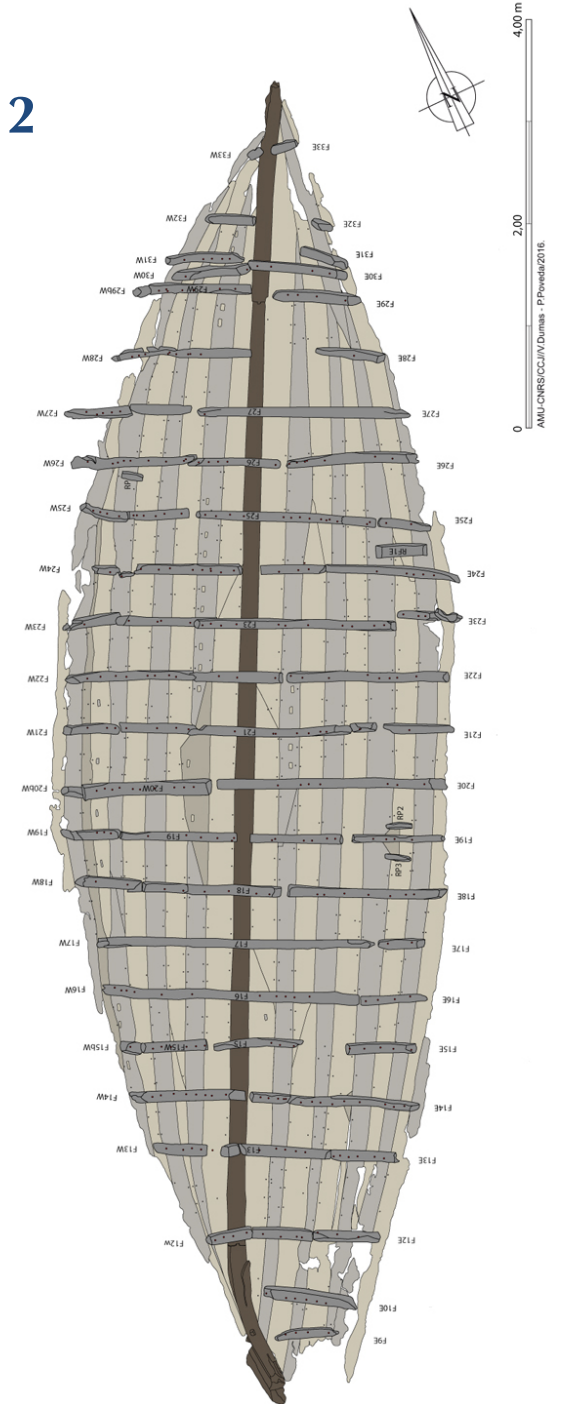


T. Séguin, V. Dumas, CNRS/CCI

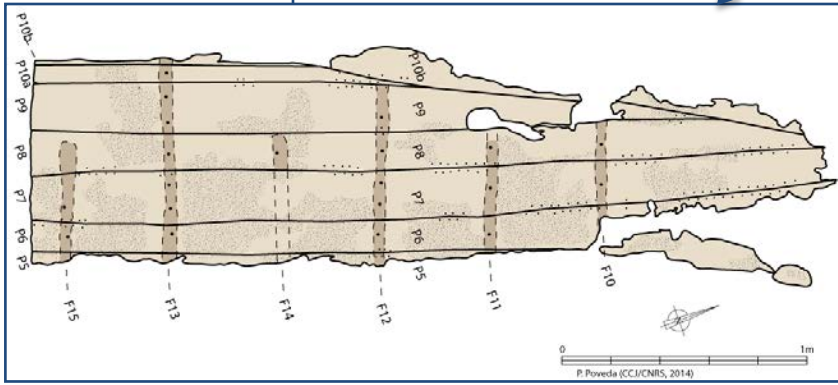


Ph. Groscaux, CNRS/CCI

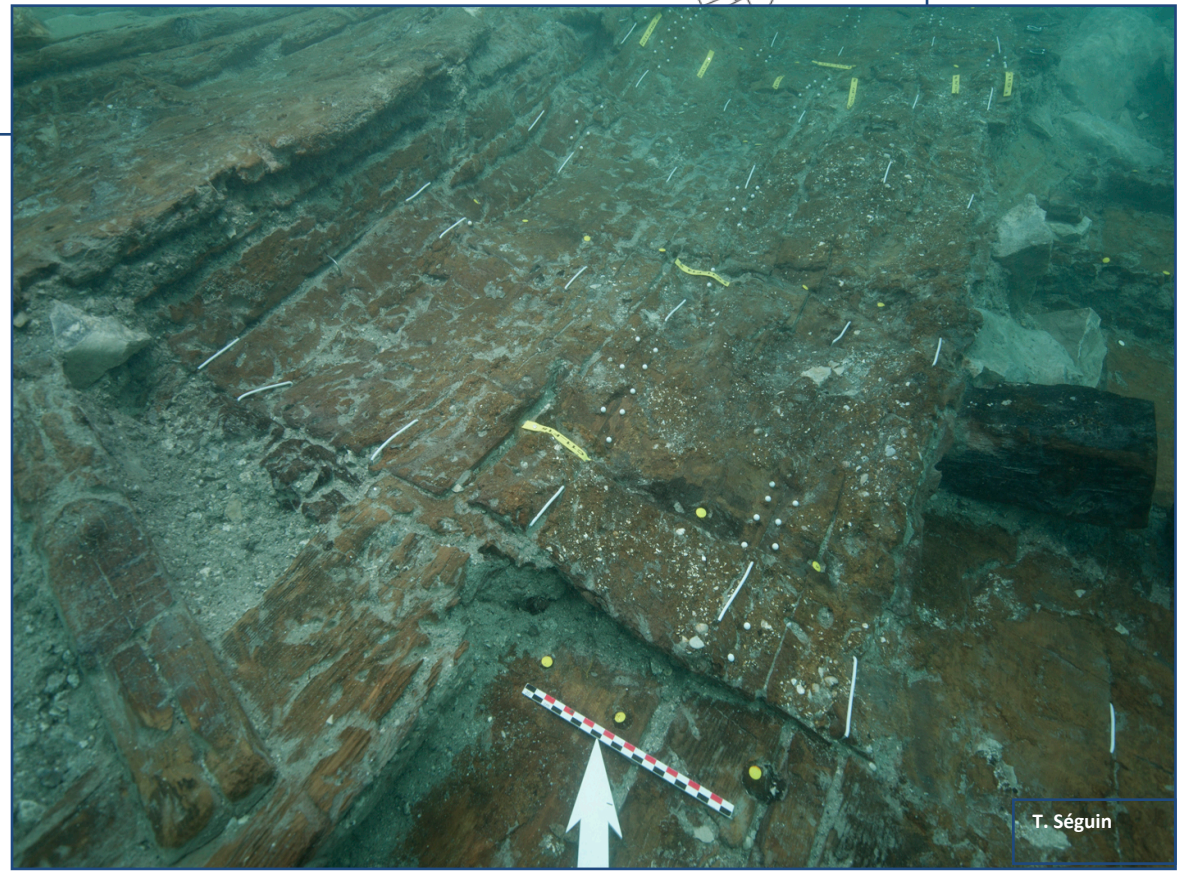
# Caska 2







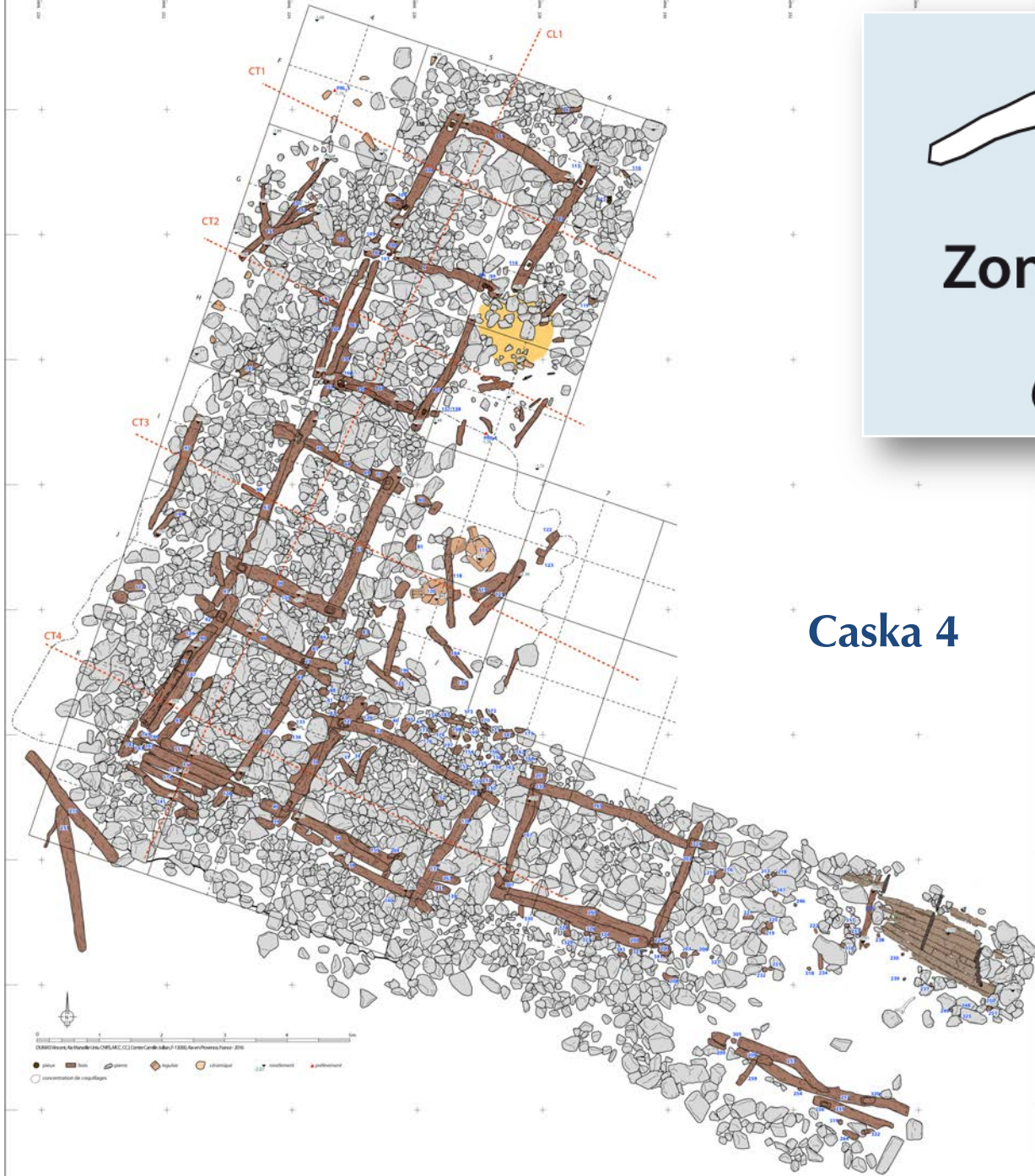
### Caska 3



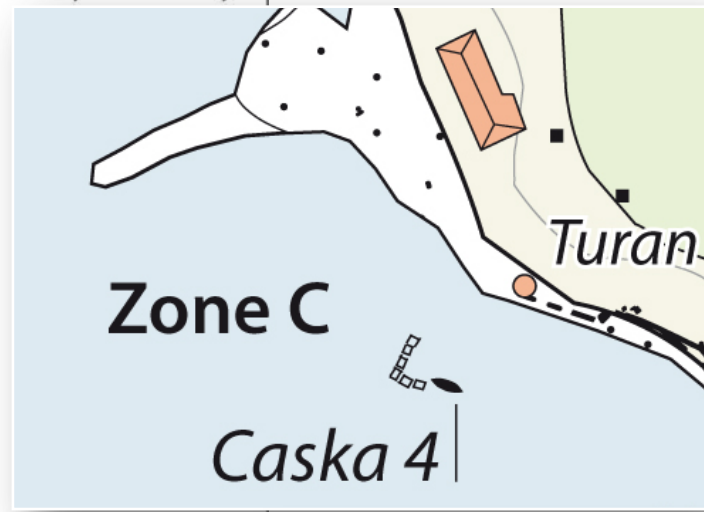
T. Séguin

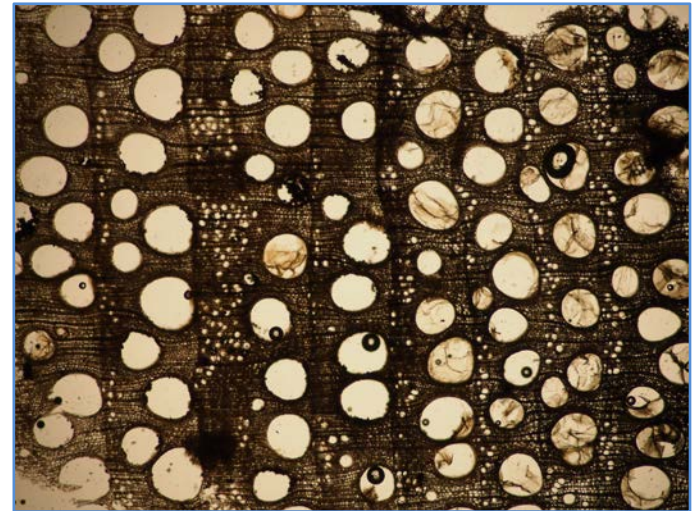
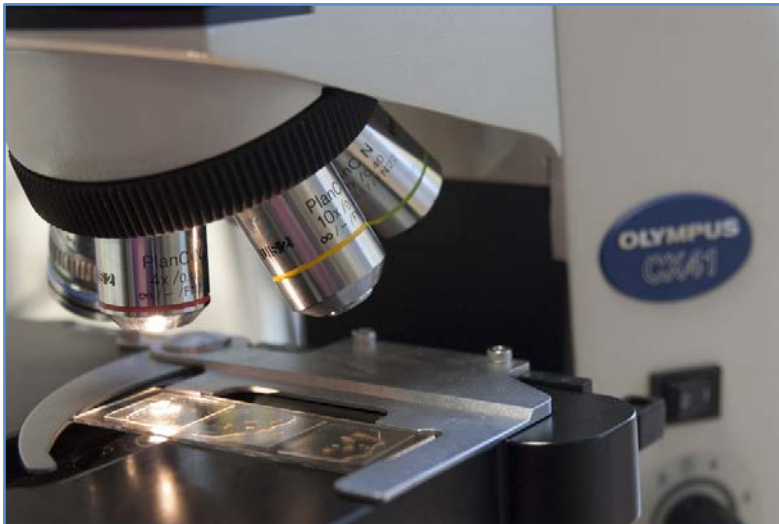
T. Séguin

T. Séguin



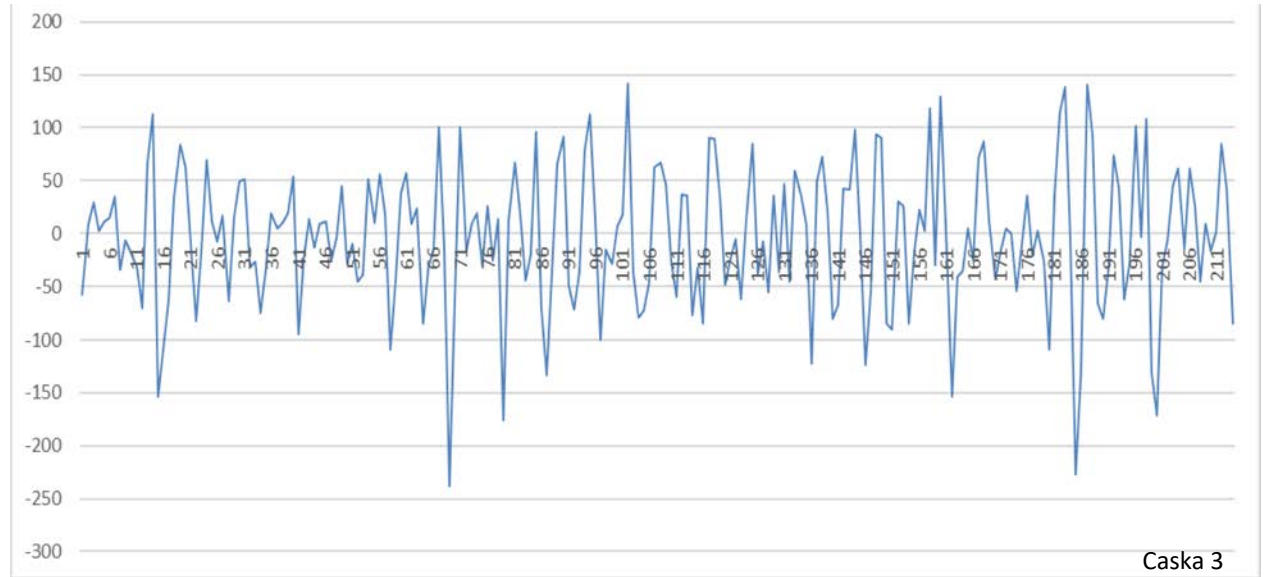
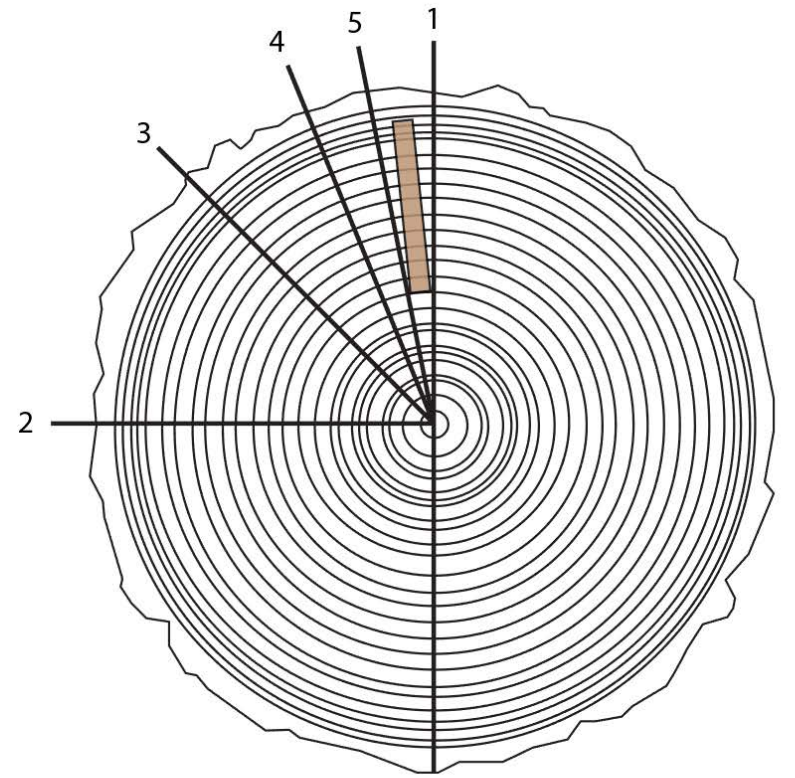
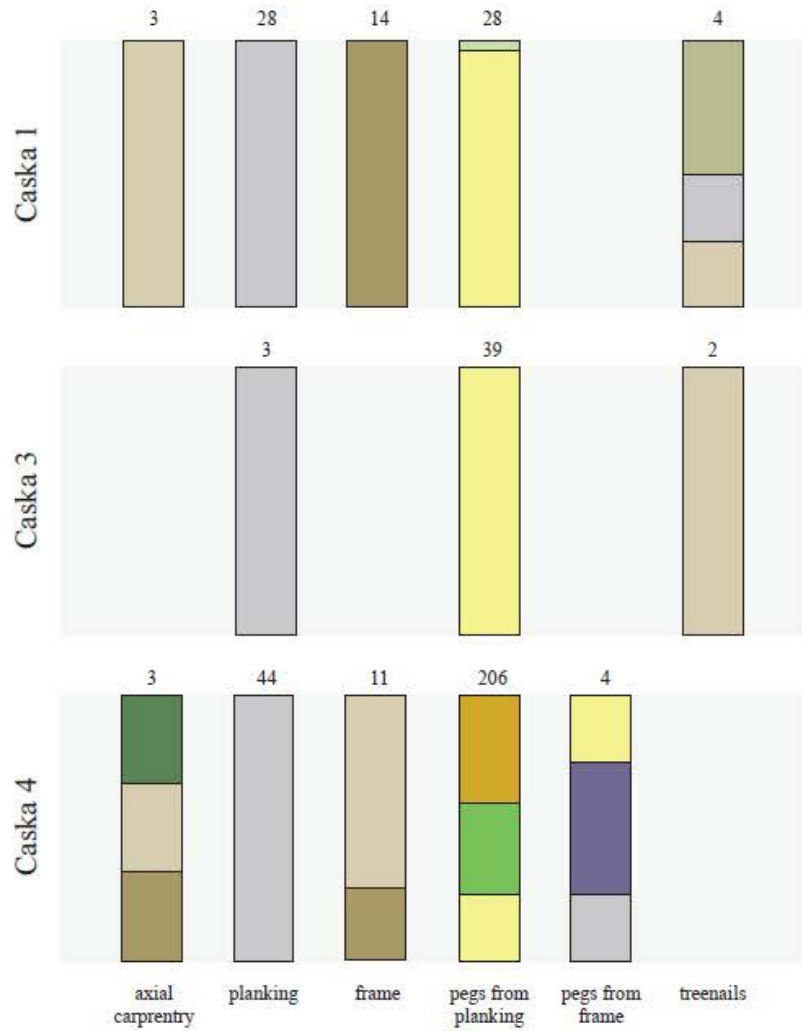
Caska 4



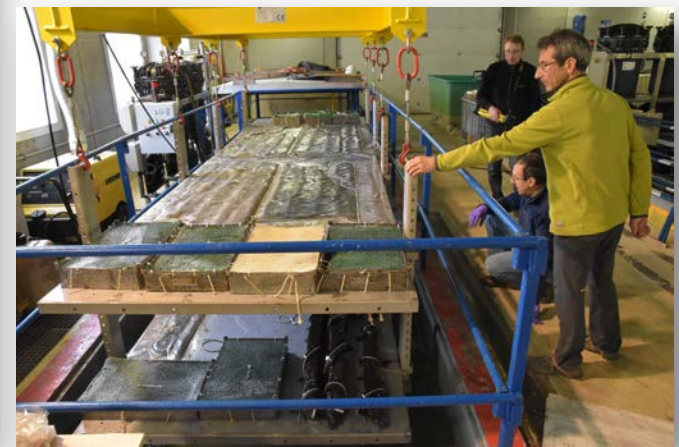
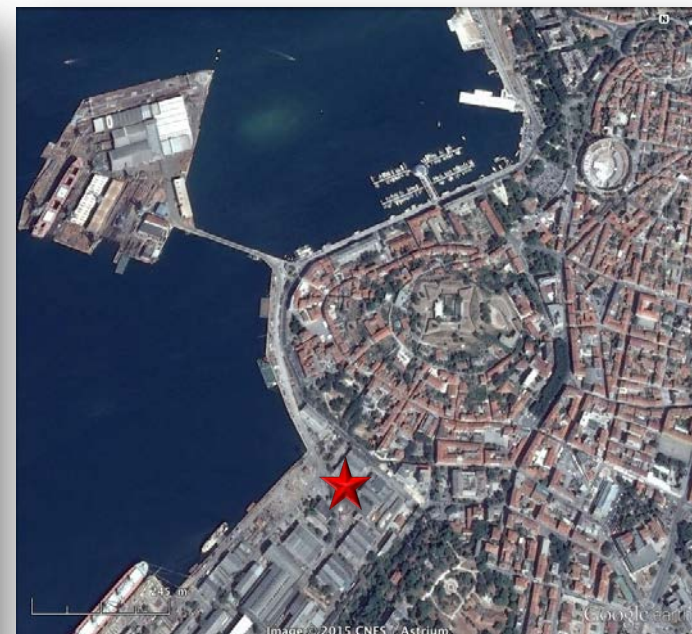




Caska 4, *Fagus sylvatica* L (A. Ferreira)



Caska 3





Pula 1

Pula 2



Pula 1



Pula 2



Pula 1

Pula 2

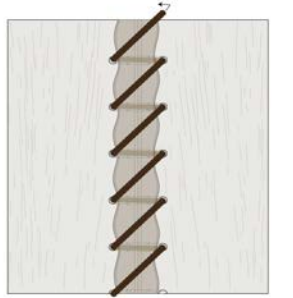
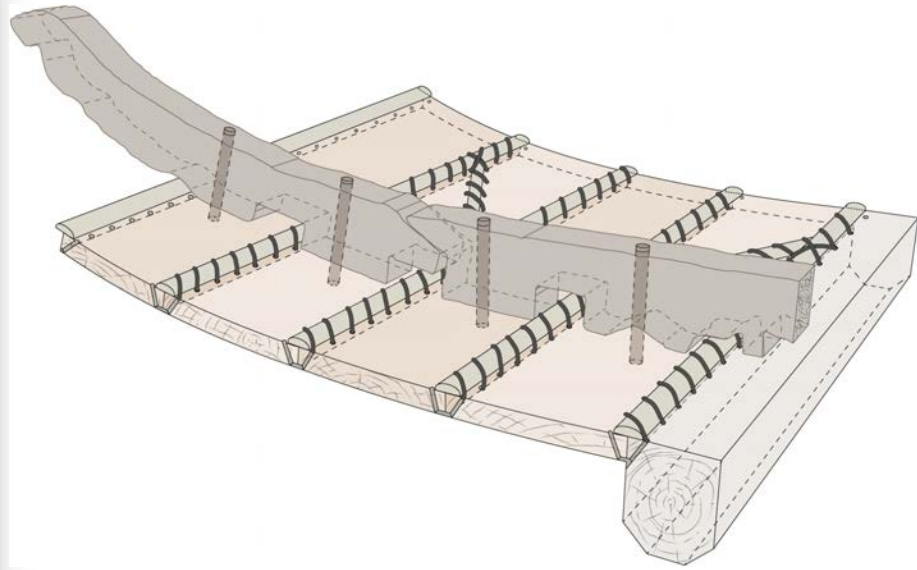


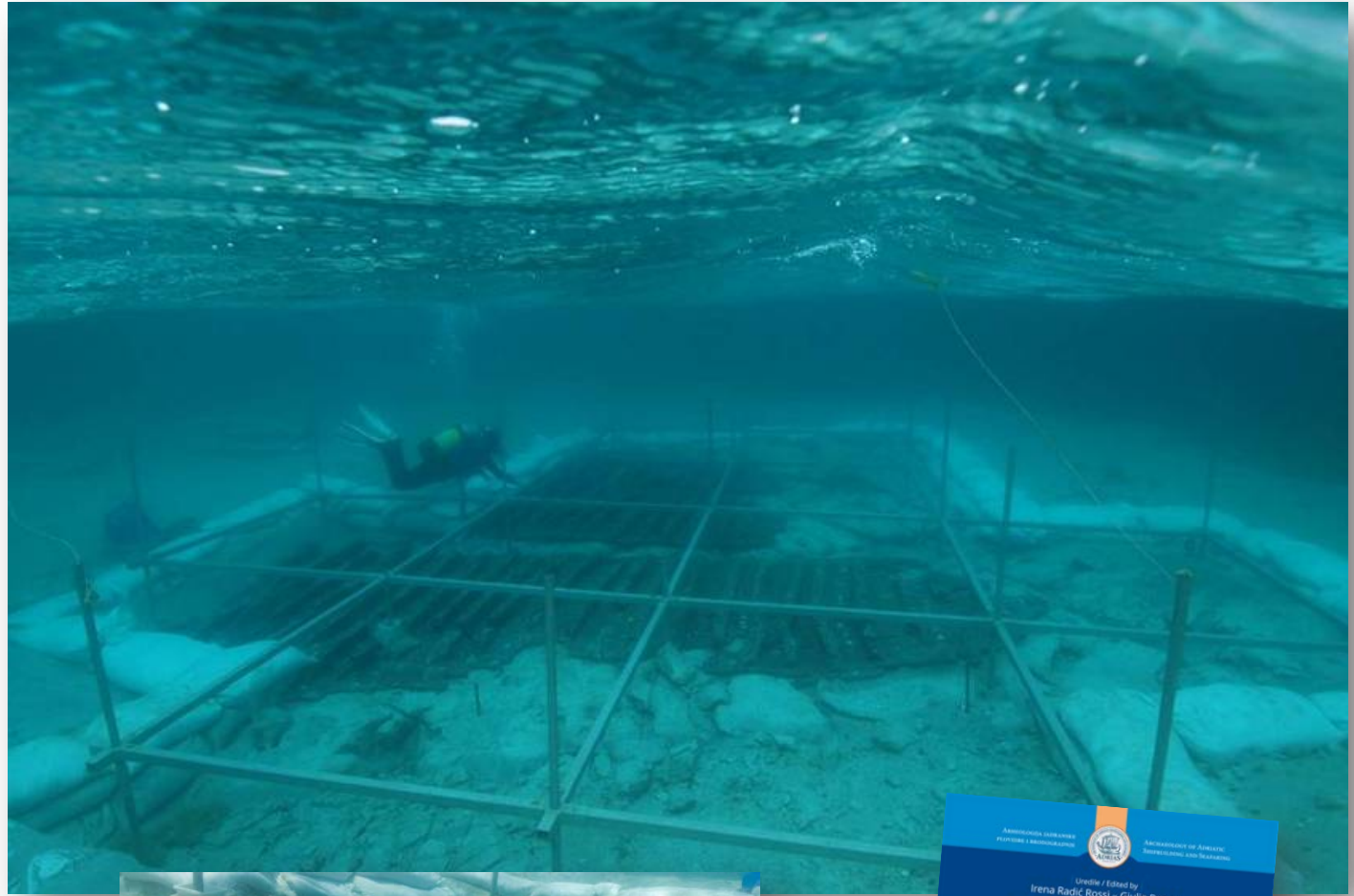
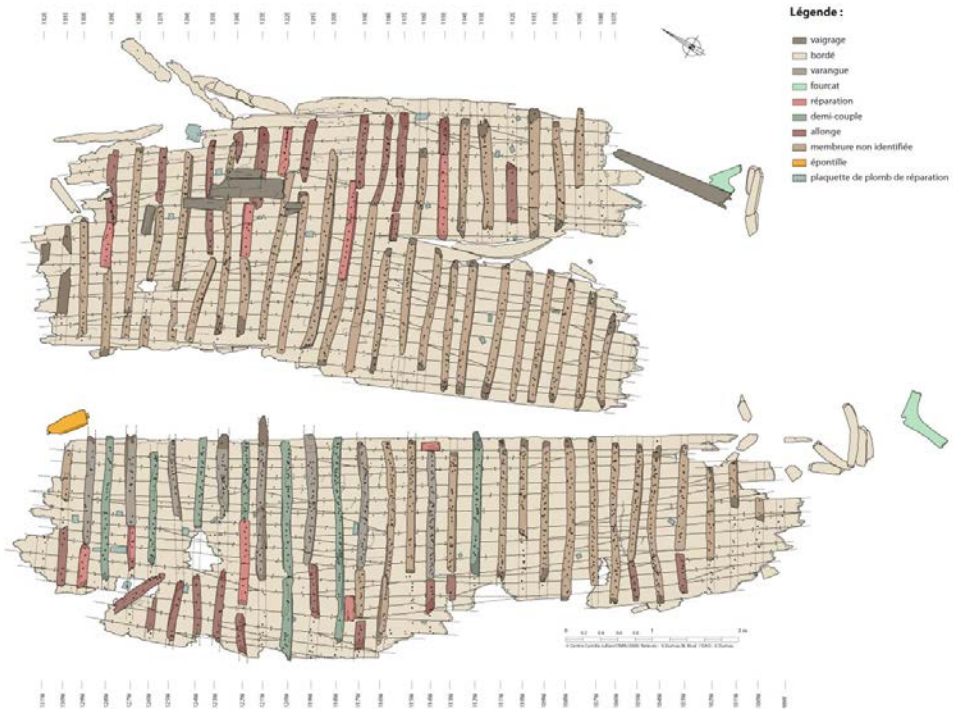
# Poreč / Parenzo



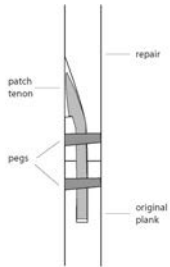








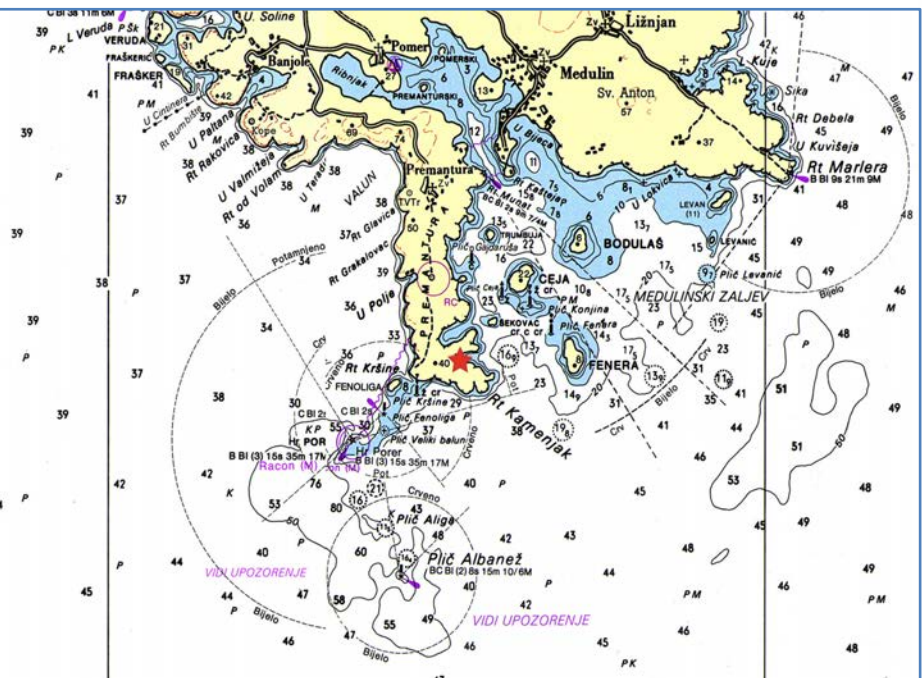
# Pakoštane

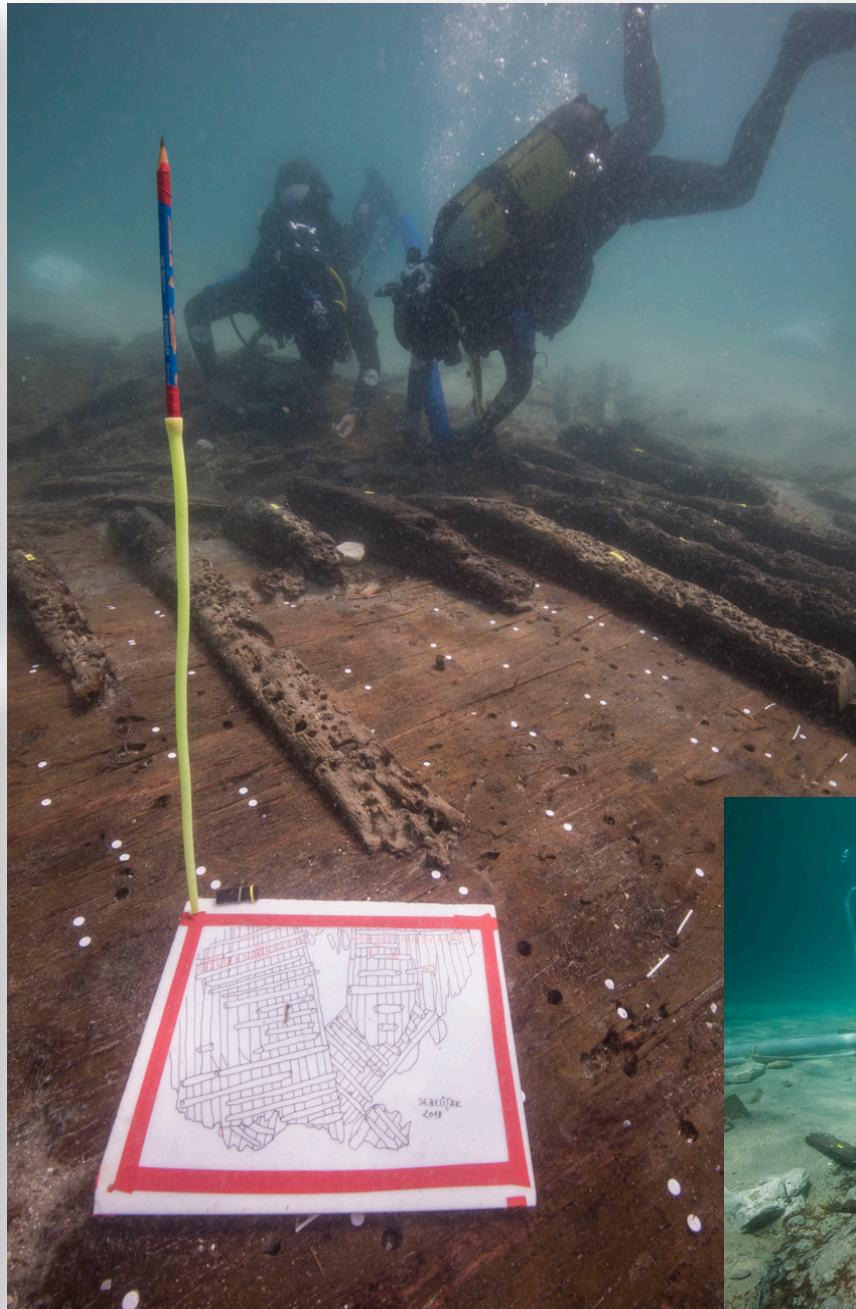


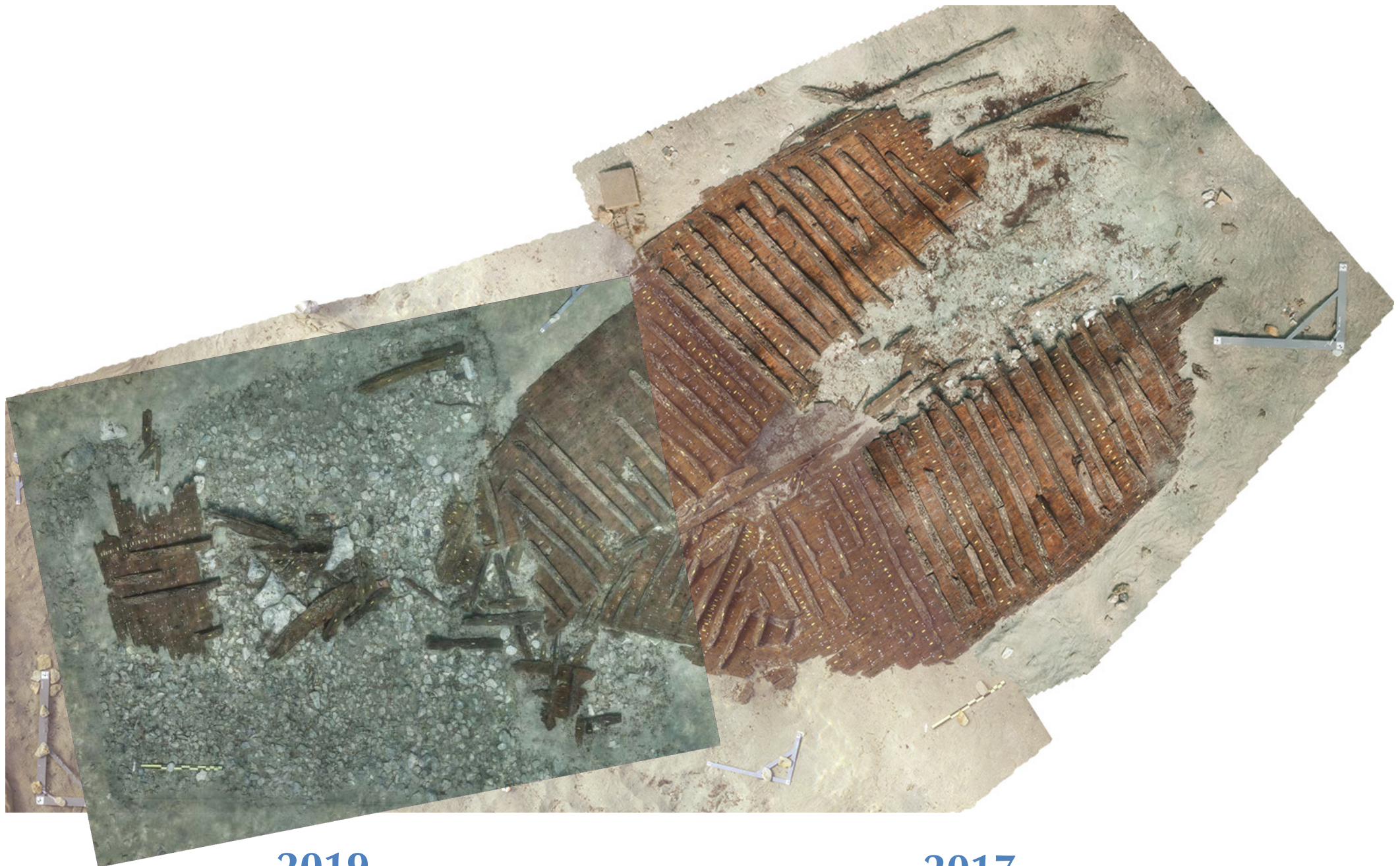




# Debeljak, Premantura

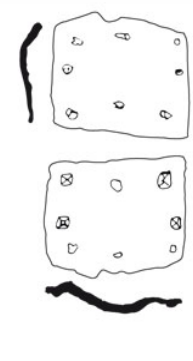
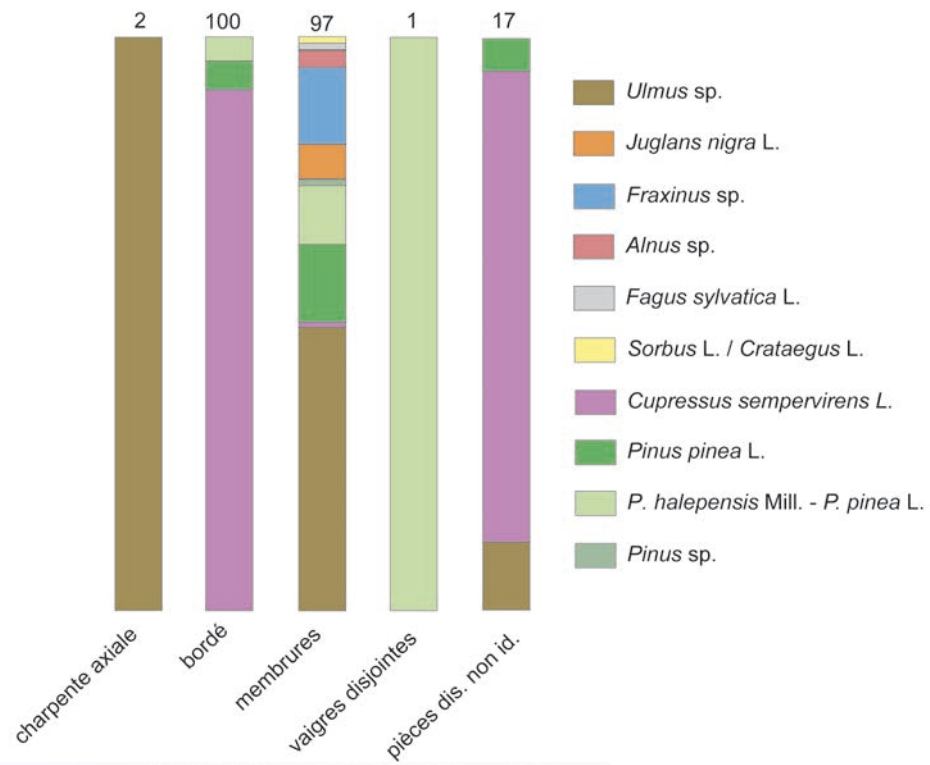






2019

2017

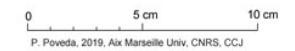


DE19 / LP1

DE19 / LP7

DE19 / LP3

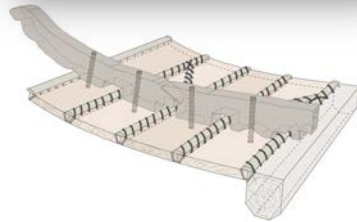
poix



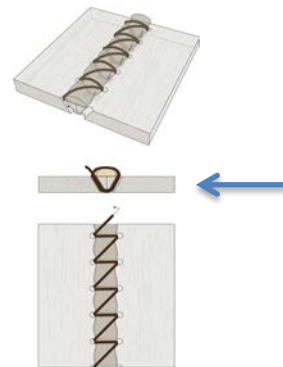




Zambratija, XII-X s. av. J.-C.,  
quille-planche en orme,  
bordé en orme ligatures  
simples (///), varangues  
(aulne, poirier) très espacées  
pieds étroit et dos arrondi,  
ligatures externes, étanchéité:  
fibres et lattes en sapin



Caska 1 et 3, Pula 2, Poreč, Ier-  
Ile s. ap. J.-C., quille en chêne,  
bordé en hêtre, ligatures type ///,  
varangues en chêne à sect.  
crénelées, gournables



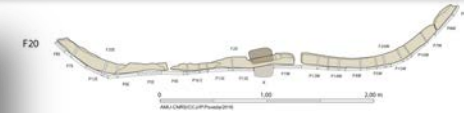
Pula, Ier-Ile s. ap. J.-C.,  
quille en chêne, bordé en  
orme, ligatures type //I//,  
varangues en chêne à sect.  
rect. crénelées, gournables



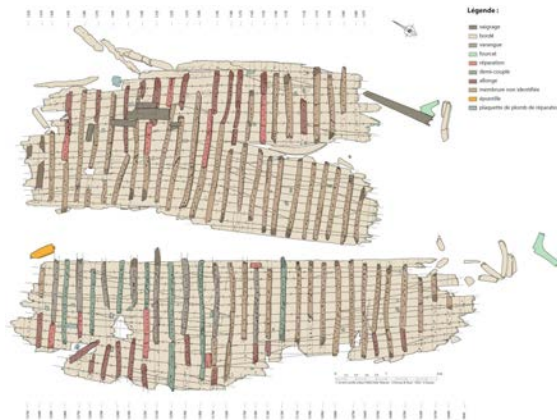
Caska 4, Ier s. av.-Ier s. ap. J.-C.,  
quille en chêne, bordé en hêtre,  
ligatures type ///, varangues en  
chêne à sect. rect. crénelées,  
ligatures externes



Paržine, IIe s. av. J.-C., quille, retour de galbord, profil long. asymétrique, tenons chevillés, varangues/demi-couples, gournables, carlingue-emplature du mât, vaigrage



Caska 2, fin Ier s. av. J.-C., quille, fond plat, profil long. symétrique, tenons chevillés, varangues-allonges/demi-couples et demi-couples outrepassées, gournables et clous, carlingue-emplature du mât, vaigrage



Pakostane et Debeljak, fin IVe-déb. Ve s. ap. J.-C., quille, fond plat, tenons chevillés, varangues/demi-couples, broches, gournables et clous, emplanture du mât sur carlingots, vaigrage



**GRAZIE !**

