



HAL
open science

The Bronze Age Cypriot Pottery from Tell Tweini Field A

Sarah Vilain

► **To cite this version:**

Sarah Vilain. The Bronze Age Cypriot Pottery from Tell Tweini Field A. Joachim Bretschneider; Greta Jans. About Tell Tweini (Syria): Artefacts, Ecofacts and Landscape. Research Results of the Belgian Mission., 281, Peeters, pp.313-393, 2019, Orientalia Lovaniensia Analecta, 9789042936782. halshs-03531995

HAL Id: halshs-03531995

<https://shs.hal.science/halshs-03531995>

Submitted on 13 Feb 2022

HAL is a multi-disciplinary open access archive for the deposit and dissemination of scientific research documents, whether they are published or not. The documents may come from teaching and research institutions in France or abroad, or from public or private research centers.

L'archive ouverte pluridisciplinaire **HAL**, est destinée au dépôt et à la diffusion de documents scientifiques de niveau recherche, publiés ou non, émanant des établissements d'enseignement et de recherche français ou étrangers, des laboratoires publics ou privés.

This pdf is a digital offprint of your contribution in J. Bretschneider & G. Jans (eds), *About Tell Tweini (Syria): Artefacts, Ecofacts and Landscape*, ISBN 978-90-429-3678-2.

The copyright on this publication belongs to Peeters Publishers.

As author you are licensed to make printed copies of the pdf or to send the unaltered pdf file to up to 50 relations. You may not publish this pdf on the World Wide Web – including websites such as academia.edu and open-access repositories – until three years after publication. Please ensure that anyone receiving an offprint from you observes these rules as well.

If you wish to publish your article immediately on open-access sites, please contact the publisher with regard to the payment of the article processing fee.

For queries about offprints, copyright and republication of your article, please contact the publisher via peeters@peeters-leuven.be

ORIENTALIA LOVANIENSIA

ANALECTA

————— 281 —————

ABOUT TELL TWEINI (SYRIA): ARTEFACTS, ECOFACTS AND LANDSCAPE

Research Results of the Belgian Mission

edited by

JOACHIM BRETSCHNEIDER and GRETA JANS



PEETERS

LEUVEN – PARIS – BRISTOL, CT

2019

TABLE OF CONTENTS

ACKNOWLEDGMENTS	VII
PREFACE	XI
JOACHIM BRETSCHNEIDER, GRETA JANS, ANNE-SOPHIE VAN VYVE, HENDRIK HAMEEUW AND KLAAS VANSTEENHUYSE	
Tell Tweini: A Long Story Short	1
CAROLINE SAUVAGE AND GRETA JANS	
Clay Loom Weights of the Iron Age Period at Tell Tweini Field A	31
NICOLLE HIRSCHFELD, GRETA JANS AND JOACHIM BRETSCHNEIDER (WITH THE CONTRIBUTION OF BART STEUTELINGS)	
Potmarks from Tell Tweini Field A	81
TZVETA MANOLOVA AND JOACHIM BRETSCHNEIDER	
An Unprecedented Depiction of a Syro-Canaanite Oared Galley on a Jar Sealing from Tell Tweini	117
JOACHIM BRETSCHNEIDER AND GRETA JANS	
The Glyptic of Tell Tweini Field A	149
VANESSA BOSCHLOOS	
Tell Tweini on the Syrian Coast from a Beetle's Point of View: Bronze and Iron Age Scarabs from the Belgian Excavations	181
GRETA JANS AND JOACHIM BRETSCHNEIDER (WITH THE CONTRIBUTION OF IPHIGENIA MOEDER AND HENDRIK HAMEEUW)	
A Collective Middle Bronze Age II Tomb at Tell Tweini Field A	201
JAN BAETEN	
Lipid Biomarker Analysis of Middle Bronze Age Grave Vases from Tell Tweini Field A	243
KLAAS VANSTEENHUYSE	
The Ceramic Material from the Middle Bronze Age Communal Grave at Tell Tweini Field A	255
SARAH VILAIN (WITH THE CONTRIBUTION OF KLAAS VANSTEENHUYSE)	
The Bronze Age Cypriot Pottery from Tell Tweini Field A	313
KARIN NYS	
The Iron Age Cypriot Pottery from Tell Tweini Field A	395

VEERLE LINSEELE, ELENA MARINOVA, BEA DE CUPERE, JAN VAN DER VALK, PATRICIA VANDORPE AND WIM VAN NEER	
Bronze and Iron Age Palaeo-Economy in a Changing Environment. The Bioarchaeology of Tell Tweini, on the Northern Levantine Coast	417
CECILE BAETEMAN AND FRIEDA BOGEMANS	
In Search of a Harbour in the Past Landscapes of Tell Tweini. Iden- tification of Sedimentary Environments in Support of an Archaeolo- gical Issue	619
PATRICK DEGRYSE AND KLAAS VANSTEENHUYSE	
Annex: Petrographic Characterisation of the Ceramic Fabric Groups at Tell Tweini.	639

THE BRONZE AGE CYPRIOT POTTERY FROM TELL TWEINI FIELD A

Sarah VILAIN¹

with the contribution of Klaas VANSTEENHUYSE²

¹ Austrian Academy of Sciences - Vienna

² UC Leuven - Limburg

The excavations at Tell Tweini¹ yielded a large range of Bronze Age Cypriot wares that testify to the vivacity of interactions between Cyprus and the Northern Levant in the Second Millennium BCE. Gathered here is a corpus of 531 items that further supports this assessment.² A first overview of the main Cypriot wares identified on the site was undertaken in 2008 by K. Vansteenhuyse.³ K. Nys and K. Middernacht completed Vansteenhuyse's work by focusing on additional wares and shapes that were detected during the 2009 study season.⁴ However, the broad range of Cypriot wares as well as the importance both quantitative and qualitative of the corpus justify a new publication of the whole spectrum of the discoveries, with updated identification and classification when necessary. The wares are ordered according to the traditional sequence developed by P. Åström,⁵ beginning with the *White Painted Pendent Line Style* and ending with the *White Slip II*. To enhance the understanding of Cypriot imports, the origin and chronology of the wares in Cyprus are evoked before presenting the occurrences from Tell Tweini. When relevant, the parallels from other Northern Levantine sites are mentioned as well in order to encompass the Cypriot imports from Tell Tweini in the regional context. After the Late Bronze Age destruction probably caused by the Sea-people around 1192 BC (Level 7A), Cypriot imports are so far absent in the following Level 6GH of the later

¹ First of all, I would like to express my gratitude to J. Bretschneider and G. Jans who welcomed me in Leuven and trusted me with this article. I am also indebted to K. Nys for her advises and her expertise. The tragic events that are occurring in Syria since 2011 made any access to the archaeological material impossible. However, the situation requires the publication of the data – even partial – that were already collected. Thus, this article is based on preliminary studies of the material made by K. Vansteenhuyse and on the database of Cypriot pottery created by K. Nys and K. Middernacht in 2009. The catalogue of Cypriot vessels that supports this research was elaborated thanks to drawings, photographs and inventories of the archaeological material, explaining succinct descriptions and cautious identifications. Nevertheless, all errors or inaccuracies remain mine.

² I would especially like to thank B. Vandermeulen, K. Vansteenhuyse and H. Hameeuw who took the photographs that illustrate the catalogue. All drawings were made under the supervision of K. Vansteenhuyse.

³ Vansteenhuyse 2008.

⁴ Nys and Middernacht 2010.

⁵ Åström 1972b.

12th century BC. With the new urban planning of the 11 century BCE (Level 6EF), also the appearance of White Painted I of the Cypriot Iron Age is attested. The trade relations with Cyprus will intensify in the first half of the 1st millennium BCE.⁶

White Painted Pendent Line Style (WP PLS)

WP PLS is one of the earliest Cypriot productions discovered on the site and, more broadly, one of the earliest Cypriot ware known on the Northern Levantine coast. It is characterised by a buff, light brown or slightly reddish clay covered by a buff slip. The decoration, executed in red or black paint, is composed by vertical groups of straight and wavy lines. WP PLS was manufactured from MC III to LC IA in Eastern Cyprus, in Kalopsidha and maybe Kythrea.⁷ The characteristic shapes are the jugs and juglets with an everted rim, a cylindrical neck, a globular or piriform body, a slightly flattened bottom and a vertical handle from rim to shoulder.⁸

Four PLS fragments were formally identified on the site.⁹ The earliest example, CYP 4, is coming from Locus 01061 (Level 8AB-7DE, MB IIB-LB I). Two other fragments typical of this ware are from Levels 8-7 (CYP 2, Fig. 2 and CYP 3). The last one, CYP 1 (Fig. 1), is from a stone floor cleared in Locus 01027 (8CD-7BC). Its specific decorative pattern, composed of a thick wavy line alternating with fine straight lines, has parallels in Ugarit¹⁰ and Sidon-College site.¹¹

The chronology of WP PLS was discussed in depth by R. S. Merrillees.¹² The appearance of PLS in Locus 01061 agrees with the chronology of the ware in other Northern Levantine sites. WP PLS is found from MB IIB-C contexts in Ugarit,¹³ Kassabine,¹⁴ Tell Sukas¹⁵ and Sarepta.¹⁶ An almost complete PLS jug was discovered in Burial 54 at Sidon-College Site.¹⁷ WP PLS is still found in LB I levels at Tell Arqa.¹⁸

⁶ This material is published by Karin Nys in this volume.

⁷ Åström 1966, 82-83.

⁸ Åström 1972a, 27-30.

⁹ Some vessels classified previously as PLS (see: Vansteenhuyse 2008, 106) are identified as WP Composite Style in the present study.

¹⁰ Schaeffer 1949, 242, fig. 102, no. 3.

¹¹ Doumet-Serhal, Rabate and Resek 2008, fig. 16.

¹² Merrillees 2002.

¹³ Al-Maqdissi and Matoïan 2008, 136, fig. 8 (Grave 1, MB II); Schaeffer 1949, 254, fig. 108, no. 19-20 (Grave LXXXV, MB II); Courtois 1978, 202 (Grave 4496, MB II to LB I).

¹⁴ Åström 1966, 139, no. 2.

¹⁵ Thrane 1978, pl. 10:1, nos. 43-44, 55, 56.

¹⁶ Koehl 1985, 68, nos. 2, 3, 4, figs. 1-13.

¹⁷ Doumet-Serhal 2008, 17, fig. 16.

¹⁸ Charaf-Mullins 2006, 180, pl. 131:2.

White Painted IV (WP IV)

A bowl with a painted decoration characteristic of WP IV (CYP 5, Figs. 3, 69) was identified by K. Nys and K. Middernacht.¹⁹ It is coming from Locus 00230, assigned to Level 8AB-7DE (MB II-LB I). In Cyprus, WP IV was produced from MC II and disappeared shortly after LC IA:1. Consequently, the bowl could belong to the first phase of use of Locus 00230. WP IV vessels were mostly discovered in Central and Northern Cyprus²⁰ and are unusual in the Northern Levant, making the presence of this bowl on the site quite significant.

White Painted Cross Line Style (WP CLS)

The corpus of WP CLS from Tell Tweini is composed of body fragments belonging to jugs or juglets, the shapes of which are similar to those executed in WP PLS. The clay is fine or very fine, with a light brown, reddish or sometimes greenish colour. The proximity between the PLS and the CLS can be explained by the fact that both styles are connected.²¹ The characteristic decoration of WP CLS displays groups of straight lines crossing each other. As for the PLS, the motifs can be executed in black or red paint.

In Tell Tweini, the CLS occurs in Level 8AB (MB II) in Loci 00919, 01055 and 01091 (CYP 6, Fig. 4; CYP 7, Fig. 70; CYP 21). Another fragment was found in Locus 01047, used from MB II to LB I. The vessel CYP 14 (Fig. 6) shows the distinctive pattern of this style in red paint. It is coming from a LB I context (Locus 00917). Six other fragments were gathered in Locus 01027, that also yielded some WP PLS. According to K. Vansteenhuyse, they could belong to the earliest phase of use of the locus.²² CYP 9 (Fig. 71), CYP 10 and CYP 22 are coming from later contexts and are likely heirlooms.

In the Northern Levant, WP CLS is mostly found on coastal sites in MB IIB/C and LBI contexts. This style is discovered alongside PLS in Kassabine.²³ The site of Ugarit delivered one of the most important assemblages of CLS, including rare shapes such as the zoomorphic *askos*.²⁴ In the same area,

¹⁹ Nys and Middernacht 2010, 124.

²⁰ Åström 1972a, 38-63. WP IV is best represented in the center of the island, at Politiko-Lambertis and Ayia Paraskevi. In Northern Cyprus, it is also known in Katydhata, *Stephania*, Dhenia, Dhali, Yeri and Vounous. In the South, it was discovered in Klavdhia, Arpera and Larnaca-Laxia *tou Riou*. In Eastern Cyprus, only one vessel of this ware is mentioned by P. Åström in Kalopsidha.

²¹ Åström 1966, 83: sherds painted with transitional WP PLS-CLS motifs were discovered in Kalopsidha.

²² Vansteenhuyse 2008, 106, 107, fig. 4.1.

²³ Åström 1966, 139, n. 2.

²⁴ Schaeffer 1949, 251, fig. 106, no. 10.

it was encountered at Tell Atchana, Qalaat er-Rouss, Tell Sukas and Tell Daruk.²⁵ This shape was also recorded in the Akkar Plain and in Sidon's region.²⁶

Worth mentioning is the presence of a particular jug (CYP 23, Figs. 7, 72) that was identified as a Cypriot CLS in previous publications.²⁷ However, a closer examination suggests that it could be a Levantine production. The neck of the jug is shorter and larger than in usual Cypriot CLS, the surface does not seem to wear any slip and the painted decoration is only roughly executed. The direction of the lines does not match the usual pattern followed by Cypriot painters. Local imitations of WP CLS potteries are not unusual: the phenomenon is well known in Egypt, in Tell el-Dab'a and 'Ezbet Helmi.²⁸ Closer to Tell Tweini's area, a local juglet imitating the WP V "Framed Cross Line Style" was discovered in Tell Kazel.²⁹

White Painted V "Zigzag Style"

Another interesting discovery is CYP 24 (Fig. 8), from Level 7DE (LB I). This fragment was first classified among the PLS.³⁰ However, the decorative motif could more surely belong to the "Zigzag Style". The so-called "Zigzag Style" was identified by P. Åström in Kalopsidha.³¹ In the Northern Levant, this style is attested at least once in Ugarit: a rim fragment of a bowl was discovered in the "Sondage 173", in the Northern Palace.³²

White Painted V Framed Broad Band Style (WP FBBS)

Less unusual than the "Zigzag Style," WP FBBS and its variations were developed in Eastern Cyprus from MC III to LC I. Numerous examples were found in Kalopsidha, Enkomi and Larnaca.³³ The clay is light buff, light gray, sometimes yellowish. The repertoire of shapes is only constituted by jugs with globular body and amphorae. The characteristic motif of this production is a large painted band framed by two thin lines.

²⁵ Bergoffen 2005, 83; Ehrich 1939, pl. XXII; Buhl 1983, 52, no. 267, pl. XVI; Oldenburg and Rohweder 1981, 32, nos. 94, 96, figs. 31, 38, 39.

²⁶ CLS was identified in Tell Kazel, Tell Arqa (Level 13 and transition to Level 13, Charaf-Mullins 2010-2011, 150), Sidon-College Site (Karageorghis 2009, 326) and Kafer-Ġarra (Guigues 1938, 30-31, fig. 48).

²⁷ Vansteenhuyse 2008, 106, fig. 2:5.

²⁸ Maguire 1995, 4.

²⁹ Dunand, Bounni and Saliby 1964, pl. XVIII:2.

³⁰ Vansteenhuyse 2008, 106.

³¹ Åström 1966, fig. 99; Åström 1972a, fig. XVI: 4-6.

³² Mallet 2013, 327, no. 7, pl. coul. V; pl. I.

³³ Åström 1966, 90.

In Tell Tweini, this style is represented by three sherds. CYP 26 (Figs. 10, 73) seems to be a variation of FBBS or a fragment of Composite Style. Indeed, the decorative motif is composed of a horizontal plain broad band and a vertical grid band framed by pairs of lines. It was associated with WP PLS and CLS in Locus 01027 (Level 8AB-7BC).

Another example is of particular interest: CYP 25 (Fig. 9) is a large body fragment of an amphora with a complete handle. The characteristic decoration of this production was executed in red paint. An amphora of a similar shape, but painted in black, is known from Grave 12.57 at Tell Arqa (Level 12, LB I).³⁴

WP FBBS is attested in the Northern Levant from MB IIB/C (Sounding 173 at Ugarit,³⁵ Level 13 at Tell Arqa).³⁶ Isolated fragments were also identified in Sarepta³⁷ and Sidon-College Site.³⁸

The WP V Composite Style

This category gathers WP V jugs which are painted with a combination of motifs that are usually associated with different WP styles. Three jugs from Grave 00170³⁹ (CYP 28, 29, 30; Figs. 11a-c) which were initially classified as WP PLS can, after a closer examination, be considered as belonging to the “Composite Style.”

The jug CYP 30 displays groups of horizontal and vertical lines tangent to each other. This pattern is characteristic of the “Tangent Line Style” (TLS). However, the decoration also includes a wavy line typical of WP PLS. CYP 29 combines a wavy line with a motif characteristic of the “Broad Band Style” (BBS). CYP 28 is painted with the same BBS motif as CYP 29 and is wearing a cross on the shoulder. The presence of jugs of Composite Style at Tell Tweini is not surprising, since other examples were discovered in funerary contexts at the neighbouring site of Ugarit.⁴⁰

CYP 31 (Fig. 12) and CYP 32 (Fig. 75) could also belong to this category. The main motif of CYP 32 is a vertical wavy line framed by straight ones. In addition, it displays a wavy line framed by dots that has close parallels in Tell Arqa⁴¹ and Enkomi.⁴²

³⁴ Charaf 2008, fig. 5.

³⁵ Mallet 2013, 332, no. 66, 68.

³⁶ Charaf 2008, 127.

³⁷ Koehl 1985, 32.

³⁸ Karageorghis 2009, fig. 1, 1st row, 2nd sherd.

³⁹ For the communal grave, see Jans and Bretschneider in this volume.

⁴⁰ Schaeffer 1936, 131, fig. 18-R ; Schaeffer 1949, fig. 105, no. 37, fig. 107, no. 28.

⁴¹ Charaf 2008, 127, fig. 5.

⁴² Dikaios 1969, pl. 54:15.

White Painted V Eyelet Style (WP ES)

In Cyprus, WP ES was manufactured from MC III to LC IA.⁴³ It was recorded in Kalopsidha, Enkomi, Galinoporni, Livadhia-*Kokotes*, Milia, Trikomo, Ayia Paraskevi, Throni and Lapithos.⁴⁴ The characteristic shape of this category is the juglet with a pinched mouth, a concave neck, an ovoid body, a handle from rim to shoulder and a conical pedestal-base. The shape is inspired by RB juglets and was borrowed from Levantine prototypes.⁴⁵ The ES took its name from its specific painted decoration that includes a small “eye” consisting of an encircled dot painted on each side of the pinched mouth.

Three juglets from Grave 00170 are belonging to this specific production. The bodies of CYP 34 (Fig. 77) and CYP 35 (Fig. 78) are painted with geometric motifs, dots and undulating lines organized in panels, as usual in this style. The juglet CYP 33 (Fig. 76) is only decorated in its superior part. Another fragment was found in Locus 01027 (Level 8CD-7BC) that also delivered WP PLS, CLS and FBBS.

Apart from Tell Tweini, in the Northern Levant, the ES is only known at Ugarit. Two juglets were discovered in the inferior burial of Grave LXXV,⁴⁶ another one in Grave LXXXIII⁴⁷ and two more in Grave LXXXV.⁴⁸ A last juglet, from a grave belonging to MB is mentioned by Cl. F.-A. Schaeffer.⁴⁹

In the Southern Levant, three examples were discovered in Strata XI and X of Megiddo, in MB IIB/C contexts.⁵⁰ WP ES is also attested at Yftahel,⁵¹ Tell Kabri, Tirat Carmel, Atlit and Megadim.⁵² In Egypt, it was only found at Tell el-Dab‘a.⁵³

White Painted V Varia and White Painted V or VI (WP V or VI)

In the catalogue, the category WP V *varia* gathers fragments that were identified by their clay as WP V but that could not be assigned to a specific style. Seventeen fragments were recorded. CYP 41 (Fig. 16) is a small fragment of a closed vessel. CYP 52 and CYP 53 could come from carinated jugs or

⁴³ Åström 2007, 106.

⁴⁴ Åström 1966, 87; Åström 2007, 97-99.

⁴⁵ Åström 2007, 107.

⁴⁶ Schaeffer 1939b, 283, fig. 5-L, M. According to the funerary material published by the excavator, this grave could have been in use from MB IIB/C to the beginning of LB II.

⁴⁷ Schaeffer 1949, 254, fig. 108, no. 1.

⁴⁸ Schaeffer 1949, fig. 108, nos. 16, 17.

⁴⁹ Schaeffer 1939a, 26, fig. 17:10.

⁵⁰ Loud 1948, pl. 34:16 and pl. 41:29, 30.

⁵¹ Åström 2007b, 102.

⁵² Åström 2007b, 101-102.

⁵³ Åström 2007b, 102, no. 44.

tankards.⁵⁴ Three other sherds, CYP 54, 55 and 56, cannot be surely attributed to WP V or VI productions.

White Painted VI (WP VI)

WP VI was produced during LC IA-B. The clay is fine, homogeneous, soft or medium hard and usually quite friable. The fabric is yellowish or pinkish and covered with a light slip. The decoration is painted in black or dark brown, in the Triglyphic Style or in the Coarse Linear Style. Both of them were elaborated in Kalopsidha or in its vicinity.⁵⁵ The typical shape of this production is the teapot but other shapes occurred, such as bowls, jugs, juglets and tankards.

The earliest known examples of WP VI occur in Level 8 (MB II). One of them, CYP 82, is a rim fragment that belongs to a hemispherical bowl.⁵⁶ A body fragment of a jug (CYP 55, Fig. 18) with chocolate brown paint and a fragment of a WP VI tankard (CYP 81) were found in Locus 01061. This locus was used from MB II onwards but was found disturbed by a LB pit, making it difficult to date the fragments with accuracy.

A good example of WP VI Coarse Linear Style, CYP 62 (Fig. 20a), was discovered in a LB I context (Locus 00860, Level 7DE) where it was associated with a WS I bowl (CYP 360). However, most of the WP VI productions are coming from level 7BC. At least three teapots were identified (CYP 58, Fig. 19; CYP 60; CYP 61) as well as two jugs (CYP 59; CYP 66), one sherd of a tankard (CYP 81) and a rim fragment of a bowl (CYP 82). One residual fragment of a closed shape, CYP 63 (Fig. 20b), was found in Level 7A.

Two other unusual fragments could belong to WP VI rattles. CYP 64 is a pointed base discovered in Locus 00838 (Level 7BC), that also delivered BR and LH III vessels. CYP 65 is another base fragment from Locus 01097 (Level 7DE-BC). Rattles are zoomorphic figurines, traditionally identified as an owl, containing small stones or shells in order to produce a specific noise when they are shaken.⁵⁷ In Cyprus, some examples were found in Enkomi,⁵⁸ Maroni,⁵⁹ Kazaphani⁶⁰ and Athienou.⁶¹ These objects are usually associated with funerary or ritual contexts. They could have been used as music instruments in religious

⁵⁴ For examples of the shapes, see Åström 1972a, figs. XVII:8 and XVIII:9.

⁵⁵ Åström 1966, 90-93.

⁵⁶ Åström 1972b, fig. XLI:12.

⁵⁷ Matošian 2004, 322.

⁵⁸ Dikaios 1969, vol. IIIa, pl. 53, no. 18 (1887/6).

⁵⁹ Johnson 1980, pl. LIV, no. 170.

⁶⁰ Nicolaou and Nicolaou 1989, 39, fig. 10, nos. 502-503.

⁶¹ Merrillees 1983, 32, figs. 4:3, 6, 8, 9.

practices or had an apotropaic function.⁶² WP VI rattles were discovered in LB IIA contexts at Ugarit⁶³ and Sidon-Dakerman.⁶⁴

White Painted Hand-made (WPHM) Varia

In this category are integrated WP fragments too badly preserved or too small to identify the specific WP production they belong to. CYP 83 (Level 8CD-7BC) is a small fragment of an animal leg that could come from a zoomorphic vessel. Cyprus has a long tradition of animal-shaped vases.⁶⁵ Such vessels, made in WP V-VI, were discovered in Ugarit, Sarepta and Tyre.⁶⁶ Three fragments of bowls have also been identified: CYP 103-105. The other discoveries are coming from closed shapes. CYP 84 (Level 8AB-7) is the everted rim of a WP (V?) jar. CYP 85a and b (Level 8AB) are mouth and neck fragments of a jug with a pinched rim. CYP 93a, b and CYP 94 likely belong to tankards.

White Painted Wheel-made Ware (WPWM)

Contrary to other WP productions, that are hand-made, WPWM is a specific category manufactured on the fast potter's wheel. WPWM I has a very fine clay with small mineral and sandy inclusions.⁶⁷ In Cyprus, it was developed from LC IA to the end of LC IB. WPWM II has a grittier clay in a brownish, greyish or pinkish colour, with sometimes a darker core. The surface is covered with a whitish or greenish slip.⁶⁸ It was developed from LC IB to LC IC and is mostly known from the graves of Enkomi.⁶⁹

CYP 114, from Level 8AB (MB II), belongs to WPWM I. The vessels CYP 117-121 were identified as WPWM II. The earliest attestation of this category, CYP 120, was discovered in LB I context (Level 7DE). CYP 119, also from a closed vessel, is coming from a LB II locus (Level 7BC). The other examples of WPWM II cannot be dated with accuracy. Two fragments (CYP 115 and 116) could belong either to WPMW I or II. They are respectively assigned to Levels 7BC and 7 in general.

⁶² Gorris 2012, 242.

⁶³ Matoïan 2003, 105-113.

⁶⁴ Saidah 2004, 25, no. 26, fig. 14.

⁶⁵ Caubet and Merrillées 1997.

⁶⁶ Schaeffer 1949, fig. 74, no. 20; Courtois 1978, 250, fig. 17:3; Koehl 1985, nos. 10, 70, fig. 1; Bikai 1978, 53, pl. LIIA-3, n. 3, pl. LXXXVII.1.

⁶⁷ Åström 1972c, 700-701.

⁶⁸ Åström 1972c, 274.

⁶⁹ Åström 1972c, 701.

In the area, WPWM vessels were identified at Ugarit and Minet el-Beida.⁷⁰ Other fragments have been noticed at Sarepta.⁷¹ Unfortunately, the examples from these three sites are badly stratified and cannot be used to refine the chronology of the ware in the Northern Levant.

Red Slip Ware (RS)

An almost complete RS jug was discovered in Locus 00982 (CYP 122). The origin of this ware in Cyprus is still barely known. RS vessels are mostly coming from sites located in Central and Eastern Cyprus⁷² and are only found in minute quantities outside the island. In the Northern Levant, a RS II fragment was identified at Sarepta.⁷³ The presence of RS is also attested in the Southern Levant, at Tell el-Ajjul,⁷⁴ and in Egypt, at Tell el-Dab'a.

Red-on-Black Ware (RoB) and Red-on-Red (RoR)

RoB and its variation RoR are both present at Tell Tweini. Ten fragments were identified: eight of them are rim or body fragments of bowls and two could come from closed shapes.⁷⁵ This production has a very fine or fine clay, with a colour varying from light buff to pinkish. It is covered by a dark grey to black slip (RoB), or by a red slip (RoR). The decoration consists of groups of lines executed in red or purplish paint. The ware developed in the Karpas peninsula, in Eastern Cyprus, from the MC III to at least the end of the LC I period.⁷⁶ One of the production centres was located in Phlamoudi-*Melissa*.⁷⁷ This ware is also present in Galinoporni, Milia, Nitovikla, Paleoskoutella, Ayios Iakovos and Enkomi.⁷⁸

In Tell Tweini, the earliest examples were found in Level 8 (MB II, CYP 125, Fig. 23; CYP 130). Two joining rim fragments were discovered in Level 8AB-7DE (MB II-LBI, CYP 123, Figs. 21, 79). The shape of the sherds suggests that they belong to an almost conical bowl as described in P. Åström's Type ICa.⁷⁹ CYP 133 (Fig. 27) and maybe CYP 132 (Fig. 26) are fragments of

⁷⁰ Schaeffer 1933, fig. 3:3; Schaeffer 1949, figs. 67, 75:23; Courtois 1978, 250, fig. 17:4.

⁷¹ Koehl 1985, 71, no. 13, figs. 1, 13; Anderson 1988, 267, pl. 29:2.

⁷² RS productions were discovered in Lapithos (Åström 1972a, 165-171); Ayios Iakovos (Åström 1972a, 314-321); Enkomi (Dikaios 1969, 223-224) and Kalopsidha (Åström 1966, 47, 49-52).

⁷³ Koehl 1985, 32.

⁷⁴ Åström 1972a, 225, n. 6.

⁷⁵ Nys and Middernacht 2010, 124.

⁷⁶ Åström 1965, 78.

⁷⁷ Crewe 2009, 94.

⁷⁸ Courtois 1981, 18.

⁷⁹ Åström 1972a, 110, fig. XXXI-9.

closed vessels, as jugs. The presence of this shape in Tweini is not surprising, as other examples of RoB jugs are known in Ugarit.⁸⁰ The RoB/RoR is also present in Level 7BC (CYP 124, Figs. 22, 80; CYP 128; CYP 131; CYP 132), and Level 7BC-6 (CYP 126, Figs. 24, 81; CYP 127). The fragment CYP 131 (Fig. 25) was obviously misfired as shown by its dark surface.

The appearance of RoB in Level 8 of Tell Tweini is coherent with the other occurrences recorded in the Northern Levant. In Ugarit, a fragment of this ware was discovered in a MB II context in a sounding made in the courtyard of the Temple of Baal.⁸¹ Other examples are coming from Level VI of Tell Atchana.⁸² However, it is during the LB I that this production is best attested. The RoB is mostly found on coastal sites such as Sabouniye,⁸³ Bassit,⁸⁴ Sidon,⁸⁵ Sarepta⁸⁶ and Tyre.⁸⁷ However, it is also present in sites located close to the main trade roads of this period, such as Tell Kazel⁸⁸, Tell Arqa (Akkar Plain)⁸⁹ and Qatna (Orontes Valley).⁹⁰

Composite Ware (CP)

A fragment of a rare bowl, that belongs to CP (CYP 134, Fig. 28), was identified by K. Nys and K. Middenacht.⁹¹ CP is a production combining stylistic elements characteristic of other Cypriot wares. It was developed in MC III in Eastern Cyprus and the combined motifs are mostly belonging to wares elaborated in this area.

The rim fragment from Tell Tweini was found in Locus 02554 (Level 8AB-7BC, MB IIB-LBII). It was associated with WP V, RoB, PWWM and BR I, a combination that points to the LB I. The painted decoration displays a RoB motif on the outside and a WP PLS pattern on the inside. Other CP discovered in Ugarit and Tell Arqa are associating RS/BS and WP PLS motifs.⁹²

⁸⁰ Courtois 1978, fig. 5:12, Tomb 3464.

⁸¹ Monchambert 2011, 112.

⁸² Bergoffen 2005, R4, 83.

⁸³ Pamir 2013, 177.

⁸⁴ Courbin 1986, 182.

⁸⁵ Karageorghis 2009, 326, fig. 1.

⁸⁶ Koehl 1985, 32, figs. 1, 13.

⁸⁷ Bikai 1978, 55-56, pl. L-16, 17.

⁸⁸ Yon and Caubet 1990, 101, 107, no. 49.

⁸⁹ Charaf 2008, 136.

⁹⁰ Iamoni 2012, 164.

⁹¹ Nys and Middenacht 2010, fig. 2.

⁹² Monchambert 2004, 248, no. 1418, figs. 104, 110; Charaf 2008, 139, pl. 3a-b, figs. 21-22.

Monochrome Ware (MN)

MN was elaborated during LC IA. Its production reached a peak in LC IB and disappeared slowly in LC IIA. As Pilides suggested, initial regional variations can be attributed to the possible existence of several manufacturing centres.⁹³ Thus, the presence of the Monochrome A fabric (CYP 159), with a hard buff fabric and an orange to red slip, was recognized by K. Nys and K. Middernacht.⁹⁴ They also identified a painted variation of the ware (CYP 171, Fig. 33).

In Tell Tweini, MN is present in Level 8AB, in Locus 01057 (CYP 170, Fig. 32), where it was associated with WP productions. CYP 152 is from the MB Locus 01041, attributed to the same level. However, Locus 01041 could have been disturbed by a pit, explaining the presence of LB material. CYP 141, CYP 157 and CYP 161 are coming from MB II-LB I contexts (Levels 8-7DE). Nevertheless, the bulk of the discoveries belong to the LB II (Level 7BC). Some MN bowls were concentrated in Loci 00847, 00848 and 01019 where they were associated with other characteristic Late Cypriot Wares: WSh, WS II and BR II.

Concerning the typology, we notice that bowls of Type IJ⁹⁵ (CYP 159) and sub-Types IJb (CYP 139, with a simple carination)⁹⁶ and IJc⁹⁷ (CYP 138, Fig. 31; CYP 160, with a double carination) are represented. Sherds from larger vessels were also recognised. CYP 137, CYP 156, CYP 161 and CYP 171 (Fig. 33) are coming from deep bowls or craters of Type IIIA or IIIB.⁹⁸ These types of vases were discovered at Tell Atchana,⁹⁹ Tell Sukas¹⁰⁰ and Ugarit.¹⁰¹

MN is encountered from MB IIB/C or from MB II-LB I transition in Tell Atchana (Level VI)¹⁰² and Sarepta (Stratum L).¹⁰³ In Ugarit, the long use of the graves is preventing any attempt to date the appearance of the ware with accuracy. MN is attested from LB I in Tell Arqa¹⁰⁴ and Tyre.¹⁰⁵ This ware reaches its maximum diffusion in LB IB-LB IIA: this phenomenon is noticeable in

⁹³ Pilides 1992, 297.

⁹⁴ Nys and Middernacht 2010, 125.

⁹⁵ Nys and Middernacht 2010, 125; Åström 1972b, 95, fig. XLV, 7-8.

⁹⁶ Åström 1972b, fig. XLV:7.

⁹⁷ Åström 1972b, fig. XLV:8.

⁹⁸ Åström 1972b, fig. XLV:12 or XLVI:1, 4-6.

⁹⁹ Bergoffen 2005, 86, pl. 8a.

¹⁰⁰ Riis 1963, 219, fig. 22.

¹⁰¹ Monchambert 2004, 251, nos. 1439, 1440, 1441, 1442, 1443, fig. 105; Courtois 1978, fig. 5:11, 13; Schaeffer 1949, figs. 74-29, 33.

¹⁰² Bergoffen 2005, M1, 84, pl. 4c.

¹⁰³ Anderson 1988, 369.

¹⁰⁴ Charaf 2008, 133. The earliest example of MN from the site is a locus bridging Level 13 to 12.

¹⁰⁵ In Grave I of Tyre (stratum XVIII), MN is associated with BLWM, RLWM and BR I. This association is characteristic of LB I.

Level 6 of Area IV at Tell Kazel,¹⁰⁶ in Strata J/H at Sarepta,¹⁰⁷ and, as mentioned previously, in Level 7BC at Tell Tweini.

Among the discoveries from Tweini, the handle CYP 172 (Fig. 34) is of particular interest: it has the triangular shape characteristic of MN but the segments are clumsily made. In addition, the clay contains many grits and does not seem to fit the clays used for MN vessels. CYP 172 is more likely a Levantine production inspired by MN bowls. This phenomenon is not unusual and such imitations were discovered at Ugarit.¹⁰⁸ However, without proper chemical analyses, we cannot determine if they were locally made in Ugarit or if they could have been manufactured at other sites of the Levantine coast.

Bichrome Wheel-made Ware (BCWM)

The origin of BC was the object of many discussions among scholars.¹⁰⁹ This ware was perceived as essentially Levantine until the first NAA analyses which suggested that a part of the BC pottery was produced in Cyprus.¹¹⁰ BC vessels can be Hand-made or Wheel-made: the fragments from Tell Tweini belong to the last category. BCWM is particularly popular in Eastern Cyprus: seven hundred fragments were discovered in Nitovikla and two hundred in Enkomi.¹¹¹ It was elaborated in LC IA and survived until the late LC II.¹¹²

The three fragments of BCWM identified at Tell Tweini are coming from Loci 01045 (CYP 173, Fig. 83; Level 7DE, LB I), 04008 (CYP 174, Level 7BC, LB II) and from Pit 00968 (CYP 175, LB). In the Northern Levant, BC is essentially discovered on coastal sites and along the main communication roads of the Bronze Age: it was identified at Tell Atchana,¹¹³ Ugarit, Minet el-Beida,¹¹⁴ Tell Sukas,¹¹⁵ Tell Arqa,¹¹⁶ Beyrouth 003,¹¹⁷ Tell el-Ghassil,¹¹⁸ Sidon-College site¹¹⁹ and Sarepta.¹²⁰

¹⁰⁶ Badre 2006, 71.

¹⁰⁷ Anderson 1988, Appendix C, 517.

¹⁰⁸ Schaeffer 1949, 180, fig. 74:29, 33; Schaeffer 1936a, 123, fig. 14-P; Galliano and Calvet (dirs.) 2004, 201, no. 197.

¹⁰⁹ See Artzy 2001 for a summary of the discussions concerning BC.

¹¹⁰ The Cypriot origin of some BC productions was shown in 1970 by M. Artzy, I. Perlman and F. Azaro thanks to NAA (Artzy, Perlman and Asaro 1973, 446-461).

¹¹¹ Crewe 2007, 111.

¹¹² Åström 2001, 136.

¹¹³ Bergoffen 2005, 84, pl. 4a, b.

¹¹⁴ Schaeffer 1949, fig. 50:2, 4, 11, 15, 12, 20-23; fig. 51:15; fig. 62: 18-19; fig. 67:5, fig. 73:1; fig. 74: 8, 18; fig. 81:5; fig. 83:8; fig. 98, no. 15, fig. 100, no. 30; Courtois 1978, 224, fig. 6:1-8; Monchambert 2004, 311, nos. 1703, 1704; fig. 129.

¹¹⁵ Buhl 1983, 57, nos. 310-319.

¹¹⁶ Charaf 2006, 182, pls. 108:2, 131: 10, 11.

¹¹⁷ Badre 1997, 44 fig. 20-1, 2; fig. 28-1.

¹¹⁸ Doumet-Serhal 1996, 177, pl. 114:4, 6-14.

¹¹⁹ Doumet-Serhal 2008, fig. 32; Karageorghis 2009, 327, fig. 2.

¹²⁰ Anderson 1988, 366, pl. 21.6.

BCWM is attested from MB IIC at Tell Atchana and in transitional MB IIC/LB I contexts at Sidon-College Site. However, it is during LB I that this production spreads along the Levantine coast. The presence of BCWM in Level 7DE at Tell Tweini, attributed to LB I by the excavators, confirms the chronology of the diffusion of the ware in the area.

Base-Ring Ware (BR)

– *Base-Ring I (BR I)*

BR was elaborated in the Ovgos valley, during the transition from MC III to LC I. This production is traditionally divided into two main phases, BR I and BR II, according to P. Åström's classification.¹²¹ This subdivision as well as its implicit chronological implication were questioned by S. J. Vaughan.¹²² However, the traditional classification is still largely used in the archaeological literature and was kept in this article in order to ensure consistency with previous publications.

The presence of BR I pottery was recorded in three loci from Level 8: 00862 (CYP 199), 01041 (CYP 207; Figs. 42, 87) and 02609 (CYP 182). Unfortunately, these contexts were disturbed by LB pits and are not relevant for the chronology of the ware in Tell Tweini.

Consequently, one of the earliest attestations of the ware is the segment of a handle discovered in Locus 01061 (Level 8AB [7DE]). This locus held material from MB IIB to LB I and also delivered WP V, VI and MN.

BR I is well represented from Level 7DE. CYP 186 (Fig. 37) is an almost complete juglet that belongs to the Red Burnished fabric defined by S. J. Vaughan.¹²³ The opening and a part of the body are missing but its general shape relates it to P. Åström's Type VIDib.¹²⁴ In Locus 00945, assigned to the same level, BR I was associated with WP VI and WS I.

Thirty-one fragments were identified in Level 7BC, in LB II contexts. *Bilbil* juglets are the most common vessels, but open shapes are also represented. CYP 176 (Fig. 35) is a handle fragment of a bowl with a pinched ending, a feature characteristic of early bowls with an hemispherical body.¹²⁵ It was associated with a WSh juglet. Locus 00848 delivered five BR I fragments. Two of

¹²¹ Åström 1972b, 126-97.

¹²² Vaughan 1987.

¹²³ Vaughan 1987. The author distinguishes four BR fabrics: The Metallic Slip Ware and Red Burnished Ware (BR I in Åström's typology) and the Matt Slip Ware and Uncoated Ware (BR II in Åström's typology).

¹²⁴ Åström 1972c, 148.

¹²⁵ Åström 1972c, fig. XLVII:4.

them belong to bowls with an everted rim.¹²⁶ Two others are superior parts of *bilbil* juglets with two horizontal ridges at the attachment of the handle.

Different types of decoration can be noticed: CYP 187 (Fig. 84) has two vertical ridges on the body, opposite to the handle. Similar juglets were discovered at Tell Atchana,¹²⁷ Ras Shamra,¹²⁸ Byblos¹²⁹ and Sidon-Dakerman.¹³⁰ Locus 00967 delivered an inferior part of a jug with two antithetic arcs in relief in front of the body (CYP 184, Fig. 36). This type has parallels at Tell Atchana,¹³¹ Ras Shamra,¹³² Sidon-Dakerman,¹³³ Byblos,¹³⁴ Tell el-Ghassil¹³⁵ and Majdalouna.¹³⁶ A horizontal line is incised on the neck of CYP 191. Similar incised decorations were also found at Tell Atchana,¹³⁷ Ugarit¹³⁸ and Byblos.¹³⁹

BR I is present in the Northern Levant from the very beginning of LB I, as shown by Grave 2 of Tyre.¹⁴⁰ This production spread during the LB IB-IIA: the discoveries from Palace IV at Alalakh¹⁴¹ and Deposit 213 at Minet el-Beida¹⁴² are among the largest BR I assemblages of this period. This ware is also well represented in the Necropolis of Sidon-Dakerman,¹⁴³ at Tell Kazel, Tell Arqa¹⁴⁴ and Sarepta.¹⁴⁵ In inland sites, BR I productions were discovered in Kamid el-Loz,¹⁴⁶ Tell el-Ghassil,¹⁴⁷ Qatna¹⁴⁸ and as far as Meskéné-Emar.¹⁴⁹

¹²⁶ Åström 1972c, fig. XLVII:5.

¹²⁷ Bergoffen 2005, 89, B36, pl. 50e.

¹²⁸ Schaeffer 1949, 180, fig. 72:9; Courtois 1969, 130, fig. 7-D.

¹²⁹ Salles 1980, pl. IX:7, 23.

¹³⁰ Saidah 2004, 29, no. 54, figs. 24; 33, no. 84, fig. 37.

¹³¹ Bergoffen 2005, 89, pl. 17a-b.

¹³² Courtois 1969, 131, fig. 8-B.

¹³³ Maïla-Afeiche 2009, 527, no. 29.

¹³⁴ Salles 1980, pl. 10: 2-3, pl. IX:4-5.

¹³⁵ Doumet-Serhal 1996, 33, 95, pl. 58.6.

¹³⁶ Chehab 1940, 37, fig. 2f.

¹³⁷ Bergoffen 2005, 88, pl. 15, d, e.

¹³⁸ Courtois 1969, 132, fig. 7A.

¹³⁹ Salles 1980, pl. 10:6.

¹⁴⁰ Bikai 1978, 55.

¹⁴¹ Bergoffen 2005, 40-45.

¹⁴² Schaeffer 1949, fig. 52:8-17, 20, 21.

¹⁴³ Saidah 2004, fig. 24 no. 54; fig. 37 nos. 84-85, fig. 39 no. 99.

¹⁴⁴ Charaf 2008, 131.

¹⁴⁵ Anderson 1988, pl. 22:27.

¹⁴⁶ Penner 2006, 100, fig. 52:14; pls. 9, 10; Kulemann-Ossen 2006, 100, pl. 3:5; Heinz 2010, pl. 15:2, pl. 20:3.

¹⁴⁷ Doumet-Serhal 1996, 33, pl. 58.3.

¹⁴⁸ Luciani 2008, 119.

¹⁴⁹ Caubet 2007, fig. 1:2, pl. 1:a.

– *Base-Ring II (BR II)*

BR II was produced from LC IB:2-IIA:1 and is partly contemporaneous with BR I.¹⁵⁰ The decoration displays linear motifs executed in white paint. According to P. Åström, BR II could have been made at Enkomi or in its vicinity.¹⁵¹ The research lead at Athienou, located about 20 km South-West of Enkomi, confirmed that the ware probably originates from the area.¹⁵²

In Tell Tweini, BR II is present from the end of LB I, in Level 7DE.¹⁵³ The recorded vessels belong to bowls (CYP 217, Fig. 45; CYP 218; CYP 250, Fig. 48; CYP 256) or juglets (CYP 239, 261). However, the bulk of BR II was found in LB II contexts (Level 7BC). In addition to bowls and juglets, fragments of large jugs were identified. CYP 232¹⁵⁴ (Fig. 88) is wearing a decoration composed of horizontal parallel lines in white paint. CYP 243 (Fig. 47) is a base fragment of another vessel of the same type.

The corpus of BR II contains also less common shapes, such as CYP 231, a rim fragment of a bowl with a hemispherical body. According to P. Åström, these bowls usually have a vertical pierced lug on the rim.¹⁵⁵ CYP 225 is a rim sherd that belongs to a jug with the shape of an oversized *bilbil* juglet. A vessel of similar shape was discovered in the Necropolis of Sidon-Dakerman.¹⁵⁶

Two other specific productions should be noticed: CYP 215 (Fig. 43) and CYP 216 (Fig. 44) are the legs of two different bull-shaped vases. They were discovered respectively in Locus 01061 (Level 8AB [7DE]) and Locus 07310 (Level 7BC). The Cypriot bull-shaped vases were studied in detail by K. Nys. Her research showed that this production was mostly exported from LC IIA:1 to LC IIC:1.¹⁵⁷

Finally, three fragments without slip could belong to Uncoated Ware (CYP 280, Levels 7-5; CYP 281, Level 7BC; CYP 282, Level 7BC), one of the four BR fabrics identified by S. J. Vaughan.¹⁵⁸

The BR II pottery appears in the Northern Levant during LB IB and spreads broadly from the beginning of LB II, which explains its prominent presence in Level 7BC of Tell Tweini. In Tell Kazel, the *floruit* of BR II is noticeable in Level 6 of Area IV, attributed to the same period.¹⁵⁹ The archaeological site

¹⁵⁰ Åström 1972c, 700.

¹⁵¹ Åström 1972c, 770.

¹⁵² Crewe 2007, 155.

¹⁵³ One BR II fragment was recorded from level 8 (TWE-A-01068-C-004) but it is coming from a disturbed context and cannot be taken in consideration for the chronology of the ware.

¹⁵⁴ Vansteenhuyse 2008, 109, fig. 5:6; Vansteenhuyse 2010, ill. 4.6.

¹⁵⁵ Åström 1972b, pl. LII:1.

¹⁵⁶ Saidah 2004, 26, no. 30, fig. 16.

¹⁵⁷ Nys 2001, 101.

¹⁵⁸ Vaughan 1987.

¹⁵⁹ Badre 2006, 71, fig. 5:2-9, 11.

of Ugarit and its harbour of Minet el-Beida delivered the largest range of BR II of the Northern Levant.¹⁶⁰ This production is found all along the Levantine coast and in sites located in the Orontes Valley, such as Hama¹⁶¹ and Qatna¹⁶² and, in the Bekaa Valley, Kamid el-Loz¹⁶³ and Tell Hizzin.¹⁶⁴

Red Lustrous Wheel-made Ware (RLWM)

RLWM is easily recognisable thanks to its very fine red clay and its red slip cautiously burnished to a bright finish. Since more than a century, the origin of RLWM is the subject of numerous discussions. In 1993, Eriksson concluded that RLWM was produced in Cyprus, in the area of Kazaphani, between LCIA:2 and LC IIIA:1.¹⁶⁵ However, in 2000-2001, new excavations lead by J. Seeher in Bogazköy delivered almost one hundred spindle bottles of this ware,¹⁶⁶ challenging Eriksson's hypothesis of a single production centre located on Cyprus. Thus, it is necessary to keep in mind that an Anatolian or Cilician origin of the ware cannot be ruled out in the actual state of the research.

Five fragments of RLWM were already studied in Vansteenhuyse 2008.¹⁶⁷ One of them is coming from Locus 01055 (Level 8AB, MB II), that has been cut by a LB pit. The RLWM sherd belongs probably to the pit and should be consequently attributed to Level 7BC. Another example was discovered in Locus 01059, that also delivered WP V and BR wares. The superior part of a spindle bottle was found in Locus 01077 (CYP 310). These discoveries belong to the LB I, the period when the ware was introduced on the site. The other fragments are from LB II levels (CYP 311, Fig. 50; CYP 316).

We can now add new discoveries to Vansteenhuyse's study. Level 7BC (LB II) delivered two more fragments of spindle bottles in Loci 01021 (CYP 313, Fig. 49b) and 00909 (CYP 314). A fragment of a plate, the only RLWM open shape discovered on the site, was found in Locus 00611 (Level 7BC-6).

In the Northern Levant, the archaeological sites that delivered the most important corpus of this production, both qualitatively and quantitatively, are Tell Atchana and Ugarit. These sites could have played a role in the distribution of the ware at a regional scale. RLWM occurs in LB IA contexts at Tell

¹⁶⁰ Vilain 2015.

¹⁶¹ Fugmann 1958, 126, fig. 153. Level G2, contemporary to Alalakh IV, according to the excavator.

¹⁶² Du Mesnil du Buisson 1928, 21, no. 111, pl. XVIII; Al-Maqdissi *et al.* (eds.) 2002, 47.

¹⁶³ Penner 2006, fig. 84:20; fig. 108:7-9, 11-13.

¹⁶⁴ Genz and Sader 2008, fig. 4:10.

¹⁶⁵ Eriksson 1993, 149.

¹⁶⁶ Mielke 2007, 155-156.

¹⁶⁷ Vansteenhuyse 2008, 109-110.

Atchana (Level V¹⁶⁸) and during LB I period at Ugarit.¹⁶⁹ Apart from Tell Tweini, Ugarit is one of the few sites where RLWM open shapes have been discovered.¹⁷⁰

Black Lustrous Wheel-made Ware (BLWM)

A fragment from Locus 00847 (Level 7BC, LB II) could belong to BLWM (CYP 319). This ware was manufactured in Cyprus from LC I:A to LCII B or C¹⁷¹ and is well represented in Kalopsidha and Enkomi.¹⁷² However, a new examination would be necessary to confirm the identification.¹⁷³ It would not be incoherent to find BLWM in Tell Tweini as it is already attested in Tell Atchana,¹⁷⁴ Ras Shamra¹⁷⁵ and Minet el-Beida.¹⁷⁶

White Lustrous Wheel-made ware (WLWM)

CYP 320 (Fig. 51) is a rim fragment of a jug or a bottle that has been identified as WLWM by K. Nys.¹⁷⁷ This ware can be distinguished by its very fine and homogeneous clay in light brown, buff, pinkish or greyish colour. The surface is covered by a whitish slip and burnished with care. The shape of CYP 320 parallels the BLWM jugs of Type IVB1.¹⁷⁸ It was discovered in a LB II context (Locus 01020, Level 7BC).

WLWM is uncommon in Cyprus and has a very short life-span: it appears occasionally in the LC IA:2 but is better known in LC IB. The NAA analyses carried out on a bottle from Ayia Irini showed strong similarities with the clays from North-Eastern Cyprus.¹⁷⁹ In the Northern Levant, the only archaeological sites where this ware was identified are Tell Atchana,¹⁸⁰ Ugarit¹⁸¹ and Minet el-Beida.¹⁸²

¹⁶⁸ Bergoffen 2005, 47: ATP 39/295A and 39/295B, from the grave ATG 39/105.

¹⁶⁹ See for example Schaeffer 1938, 220, fig. 17:25, 37.

¹⁷⁰ Monchambert 2004, 307, nos. 1692, 1693.

¹⁷¹ Åström 2007a, 19.

¹⁷² Crewe 2007, 46.

¹⁷³ CYP 319 was not surely recognized as BLWM on the site. Unfortunately, the identification of the ware cannot be confirmed pending access to the archaeological material.

¹⁷⁴ Bergoffen 2005, 97.

¹⁷⁵ Monchambert 2004, 250, nos. 1420-1433.

¹⁷⁶ Schaeffer 1933, 98, fig. 3:4.

¹⁷⁷ Nys and Middernacht 2010, 125. The repertoire of shapes of WLWM is typologically linked to that of RLWM and BLWM.

¹⁷⁸ Åström 1972b, 218.

¹⁷⁹ Artzy 2007, 13, graph. 1.

¹⁸⁰ Kozal 2010, 69: the WLWM bottle from Tell Atchana is coming from the Plastered Tomb, attributed to the XVth century BCE by the excavator.

¹⁸¹ Schaeffer 1949, fig. 75:13.

¹⁸² Schaeffer 1932, pl. X:3; Schaeffer 1934, fig. 3.1; Schaeffer 1949, 140, fig. 52:19.

White Shaved Ware (WSh)

WSh was created in LC IA:2 and developed from LC IB to LC IIB.¹⁸³ This production has a soft or medium hard sandy fabric, in light brown, yellowish or reddish colour.¹⁸⁴ It gets its name from its surface treatment: the neck, the handle and the body are wearing distinguishable shaving marks. A large quantity of the ware was discovered in Enkomi.¹⁸⁵ A production centre could also have been located at Athienou, where a large range of these vessels has been recovered.¹⁸⁶

The typical shape of this fabric – and the only one present in Tell Tweini – is the dipper juglet with a pinched mouth, a vertical handle from the mouth to the shoulder, a fusiform body and a pointed bottom. The handle is inserted through the body wall, according to a process also used in BR. One body fragment with a broken handle was discovered in a LB I context, in Level 7DE (CYP 331). However, most of the other attestations are from LB II levels (CYP 322-330, 332-337).

In the Northern Levant, WSh is appearing in LB I but is better distributed in LB IIA, as shown by the discoveries in Level 6 of Area IV at Tell Kazel,¹⁸⁷ the Necropolis of Sidon-Dakerman¹⁸⁸ or Stratum J of Sarepta.¹⁸⁹ The increasing of WSh in Level 7BC at Tell Tweini corroborates the chronology of the ware on the Levantine coast.

Plain White Wheel-made Ware (PWWM)

PWWM is a specific category that was first defined by P. Åström.¹⁹⁰ He included under this appellation different regional productions, which he thought explained the variety of clays observed in this category. Moreover, he noticed the similarity of shapes between the Cypriot PWWM and the local pottery from Tell Atchana and Ugarit.¹⁹¹ Thus, some PWWM types could have been inspired by MB Levantine vessels.

In Cyprus, PWWM I was produced from MC III¹⁹² to the beginning of LC IIC.¹⁹³ The PWWM II is technically more achieved and developed from LC

¹⁸³ Åström 1972c, 701.

¹⁸⁴ Åström 1972b, 221.

¹⁸⁵ Åström 1972c, 745.

¹⁸⁶ Dothan and Ben-Tor 1983, 41-43, figs. 9, 25, pl. 13.

¹⁸⁷ Badre 2006, 71, fig. 6.

¹⁸⁸ Saidah 2004, fig. 13 no. 21; fig. 16 no. 29; fig. 26 no. 59; fig. 30 no. 70; fig. 41 no. 112.

¹⁸⁹ Anderson 1988, Appendix C, 517.

¹⁹⁰ Åström 1972b, 232.

¹⁹¹ Åström 1972c, 747.

¹⁹² Åström 1972a, 199.

¹⁹³ Åström 1972c, 700.

IIA until the end of LC III. Misfired productions were discovered in Graves 3, 5, 8, and 11 of Enkomi, that was certainly one of the manufacturing centres of the ware.¹⁹⁴

In Tell Tweini, PWWM I (CYP 352) was identified in Level 8AB (MB II).¹⁹⁵ The presence of PWWM I in this level is coherent with the discovery of PWWM vessels in a MB IIB grave in Kassabine, in the Jebleh plain.¹⁹⁶ CYP 339, a base fragment belonging to a shallow bowl,¹⁹⁷ is from a MB II-LB I locus. The other PWWM I vessels are from LB II contexts (Level 7BC, CYP 338, Fig. 52; Locus 00917,¹⁹⁸ and CYP 340, Locus 01620).¹⁹⁹ PWWM II is present from Level 7DE (CYP 346). The rim of a plate was discovered in Locus 00043 (CYP 348), in a LB II context (Level 7BC).

The other vases of this category cannot be surely attributed to either PWWM I or II. CYP 344 could belong to a juglet. CYP 343 is a rim and neck fragment of another closed vessel. A base fragment that belongs to a stand ring (most probably PWWM II) was also identified.²⁰⁰

The jug CYP 342 (Fig. 53, middle) was submitted to provenance analyses by H. Mommsen. According to NAA results, this jug can be assigned to group CypJ and is compatible with the pottery produced in the area of Kition or Hala Sultan Tekke.²⁰¹ This jug was discovered associated with a Mycenaean kylix.²⁰² In the Northern Levant, the presence of PWWM I and/or II was recorded at Bassit,²⁰³ Ras Shamra,²⁰⁴ Tell Kazel²⁰⁵ and Sidon-College site.²⁰⁶

Pithoi

Two fragments of *pithoi* were identified as Cypriot by K. Vansteenhuyse.²⁰⁷ The first one, CYP 357 (Level 7BC-6GH-EF, Fig. 54), is incised with an undulating line. The second one, CYP 358 (Fig. 90), has a wavy decoration in relief framed by parallel ridges.²⁰⁸ In the Northern Levant, *pithoi* with similar

¹⁹⁴ Schaeffer 1936a, 135; Schaeffer 1952, 217, n. 2; Schaeffer 1936a, 139 (Tomb 8, no. 7); Schaeffer 1952, 148 (Tomb 11, no. 97).

¹⁹⁵ Åström 1972b, fig LXXVII:1.

¹⁹⁶ Åström 1966, 139, n. 2.

¹⁹⁷ Åström 1972b, 235, pl. LXI:3.

¹⁹⁸ Åström 1972b, fig. LXIX, n. 6.

¹⁹⁹ Åström 1972b, fig. LXVII:7.

²⁰⁰ For a parallel to the shape, see Åström 1972b, pl. LXXI:5.

²⁰¹ H. Mommsen, personal communication. See also Mountjoy and Mommsen 2015.

²⁰² Jung 2010, 115.

²⁰³ Courbin 1986, 186.

²⁰⁴ Monchambert 2004, 315.

²⁰⁵ Badre 2006, 71, fig. 6:10-15.

²⁰⁶ Karageorghis 2007, 44.

²⁰⁷ Vansteenhuyse 2008, 110.

²⁰⁸ Vansteenhuyse 2008, n. 29. The author gives as reference Pilides 2000, fig. 26:226 (Sanida, no. 339) and Schaeffer 1949, fig. 86:21, 28.

decorative motifs were discovered in Ras Shamra (XIIIth c. BCE)²⁰⁹, Minet el-Beida (LB II)²¹⁰, Beyrouth 003 (Rock-Cut Chamber, LB II),²¹¹ Sidon-College Site²¹² and Tyre (Stratum XIV, end of LB II - transition to Iron I).²¹³

The White Slip Ware (WS)

WS is the best represented Cypriot ware in Tell Tweini. All the discoveries belong to hemispherical bowls with a horizontal handle. The WS productions were developed at least partially from the WP tradition of North-Western Cyprus.²¹⁴ The typology of the WS was elaborated by M. R. Popham who distinguished three phases: Proto-White Slip (PWS), White Slip I (WS I) and White Slip II (WS II).²¹⁵ The first one, PWS, is absent from Tell Tweini. The earliest examples of the ware belong to WS I.

– *White Slip I Ware (WS I)*

WS I was produced from LC IA:2 to LC IB:2, with only sporadic appearances after this period.²¹⁶ The clay is very fine to fine, with a dark red or grey colour. The exterior and interior of the bowls are covered with a very white slip. The painted decoration can be monochrome (red, brownish, purplish or black) or bichrome (brownish-red and black).

At Tell Tweini, WS I is only represented by ten fragments. The precise time of appearance of the ware on the site cannot be determined with accuracy: CYP 359 (Level 8-7DE/BC, Fig. 55), CYP 361 (Level 9-7DE, Figs. 57b, 92), CYP 362 (Level 9) are coming from disturbed loci and CYP 363 (Figs. 57d, 93) is from a context attributed to Levels 8AB -7DE.

Thus, the earliest well stratified WS I were discovered in Level 7DE (CYP 360, CYP 366). CYP 360 (Figs. 57a, 91) has a bichrome paint and a red fabric. The decoration is composed by a red wavy line below the rim and the beginning of a “Horned Frontal Motif”²¹⁷ characteristic of the Framed Wavy Line Style. The same pattern is visible on CYP 367.

²⁰⁹ Yon, Lombard and Renisio 1987, 55, fig. 36; Schaeffer 1949, 208, fig. 86:21, 24, 28.

²¹⁰ Schaeffer 1949, 208, fig. 86:13.

²¹¹ Badre 1997, 60, fig. 29:13.

²¹² Karageorghis 2009, 328.

²¹³ Bikai 1978, pl. XL: a *pitios* from Stratum XIV of Tyre is wearing a wavy line decoration inspired by Cypriot *pitioi*. However, its bottom is typical of cananean shapes.

²¹⁴ Crewe 2007, 39.

²¹⁵ Popham 1972.

²¹⁶ Åström 1972c, 700.

²¹⁷ Vansteenhuyse 2008, 107, fig. 4:1; Vansteenhuyse 2010, 100, ill. 4:7.

CYP 366 (Fig. 56) also belongs to the Framed Wavy Line Style. It displays pairs of horizontal black lines alternating with a wavy red line. It was discovered associated with a WP V juglet.

CYP 359 (Fig. 55) has a carefully executed painted decoration, consisting of a wavy line and a “Rope Pattern” motif under the rim. The last sherd, CYP 365 (Fig. 94), is residual and was discovered in Level 6 (Iron I).

The appearance of WS I in Level 7DE (LB I) at Tell Tweini is contemporary with its presence in LB I contexts in Ugarit.²¹⁸ Tell Atchana, in the Amuq Valley, delivered one of the largest assemblages of this production.²¹⁹ The WS I is mostly discovered on the Levantine coast (Ugarit, Sidon-College Site,²²⁰ Tyre²²¹) and at sites located close to the main communication routes such as Hama,²²² Qatna²²³ or Kamid el-Loz.²²⁴

– *White Slip I-II Transitional (WS I-II)*

According to K. Vansteenhuyse, three fragments found in Loci 01046 (CYP 435, Fig. 63), 01080 (CYP 437) and 02607 (CYP 436, Fig. 64) could belong to the transition between WS I and WS II.²²⁵ This transitional phase is characterised by the introduction of decorative elements characteristic of WS II on vases of WS I manufacture, or by the conservation of WS I motifs on WS II bowls.²²⁶ Transitional bowls were also identified at Tell Arqa,²²⁷ Sarepta²²⁸ and Tyre.²²⁹

– *White Slip II Ware (WS II)*

The WS II fabric is fine to medium-fine with a grey core and reddish outer layers. The mineral inclusions are composed of sand, calcite, quartz and mica. The painted decoration is black to brownish depending on firing conditions.²³⁰ WS II emerges at the end of LC IB, increases in LC IIA-B, declines in LC IIC

²¹⁸ Mallet 2013, 323, sounding 173, level 1.

²¹⁹ Bergoffen 2005, 49-50, WS 1-39.

²²⁰ Karageorghis 2009, 327.

²²¹ Bikai 1978, 55 “Imports 13”, pl. XLI.15, 18; pl. XLIII.6; pl. L. 7, 8, 13, 14(?).

²²² Riis and Buhl 2007, 35, fig. 11b.

²²³ Luciani 2008, 124, fig. 3:5, 6.

²²⁴ Penner 2006, 101, Abb. 52, no. 12.

²²⁵ Vansteenhuyse 2008, 110.

²²⁶ For chemical characterization of this transitional productions see also Aloupi, Perdikatsis and Lekka 2001.

²²⁷ Charaf 2008, 129.

²²⁸ Anderson 1988, pl. 22:21.

²²⁹ Bikai 1978, 55, “Import 12”.

²³⁰ Popham 1972, 464-465.

and then disappears from the archaeological material corresponding to LC IIIA.²³¹

A rim fragment, painted in the “Dotted Row Style”, was identified as WS II Early (CYP 370; Figs. 58, 97) by K. Vansteenhuyse.²³² This early phase is characterised by a very white slip and a decoration executed with care. Moreover, the bowls are usually deeper and have a wishbone or rounded handle different from the triangular one often associated with later productions.

Most of the WS II from Tweini belong to the mature phase of the ware. The bowls are covered with a whitish or crème slip and wear a dark brown or black decoration. The motifs are executed with less care, explaining why the “Ladder Pattern” often has thicker outer lines. This phase begins in the LC IIA and lasts until the end of the LC IIB. Unfortunately, the fragmentary state of the material does not allow an evaluation of the frequency of each decorative pattern.

CYP 388, CYP 490, CYP 491 and CYP 492, from Level 7DE, constitute the earliest attestation of WS II on the site. However, the bulk of the discoveries are from Level 7BC (LB II). A complete profile of a bowl displaying a “Ladder Pattern” was found in Locus 00908. This style is represented by several other rim sherds such as CYP 368 (Fig. 95), CYP 372 (Figs. 68d, 98, 99), CYP 373 (Figs. 68c, 100), CYP 375 (Fig. 59), CYP 376 (Fig. 101), CYP 379 (Figs. 60, 102), CYP 381 (Fig. 103), CYP 384 (Figs. 61, 104), CYP 385 (Fig. 105), CYP 386 (Fig. 106) or CYP 439 (Fig. 65). The “Dotted Row Style” and the “Hooked Chain Style” are present in minute quantity (CYP 370, 371, 380, 441). WS II productions are found throughout Level 7. One last residual body fragment with a worn “Ladder Pattern” (CYP 443) was discovered in Locus 00032, attributed to the transition to the Iron Age (Level 6GH-EF).

The presence of WS II Late – when the popularity of the ware resulted in a massification of its production and in a consequent decrease in quality (the bowls are shallower, the slip is thicker and the painted motif is reduced to simple parallel lines) – is recorded from Level 7BC. Fragments CYP 503 (Fig. 66), CYP 506 (Fig. 116), CYP 507 (Fig. 68a, b), CYP 508 (Fig. 68a), CYP 509 (Fig. 67), CYP 529 (Fig. 68e) and CYP 530 (Fig. 68f) are good examples of this late production.

In the Northern Levant, WS II is attested from the LB IB but increases dramatically in the LB IIA, as shown by the discoveries from Tell Kazel (Phase 6 of Area IV),²³³ Tell Arqa (Level 11),²³⁴ Sidon-Dakerman,²³⁵ Sidon-College

²³¹ Åström 1972c, 700-701.

²³² Popham 1972, 447, figs. 52-53.

²³³ Badre 2006, 69, fig. 4, 1-4.

²³⁴ Charaf 2008, 129-130.

²³⁵ Saidah 2004, fig. 18:34, fig. 39:96, fig. 40:107.

Site,²³⁶ Sarepta (Strata J, H)²³⁷ and Tyre (Stratum XVI).²³⁸ The WS II spread in the Syrian *hinterland* as far as Khan Sheikhoun,²³⁹ Umm el-Marra,²⁴⁰ Emar,²⁴¹ and Tell Fekheriye.²⁴²

CONCLUSION

The coastal settlement at Tell Tweini (probably ancient Gibala) was flourishing in the MB and LB, as suggested by the remains of its material culture. Tell Tweini is located about 30 km south of Ugarit, the capital of an important kingdom involved in international trade, according to written sources.²⁴³ But, whereas MB levels are poorly known at Ugarit, the excavations at Tell Tweini yielded an uninterrupted stratigraphy from EB to IA that allows to complete our knowledge of Northern Levantine trade during the MB and LB periods. The circumstances of this study, given the impossibility to access the archaeological material, are only allowing cautious observations at the moment. However, the Cypriot sequence at Tell Tweini is critical for the understanding of relationships between Cyprus and the Northern Levant.

The earliest Cypriot imports identified at the site are WP PLS and CLS productions, recorded from Level 8AB (MB IIB). They are exclusively closed vessels, probably imported for their content. The WP wares from Tell Tweini show close stylistic connections with Eastern Cyprus. The area of Kalopsidha, where WP PLS, CLS, Zigzag Style, FBBS and Eyelet Style are well attested, was certainly involved in the earliest connections with the Northern Levant.²⁴⁴

It is difficult to assess precisely in which level of Tell Tweini MN, BR I and WS I make their first appearance, as the earliest contexts in which they occur are attributed to a longer period (Level 8AB -7DE, MB IIB-LB I). At this state of the research, no rupture in the flux of Cypriot imports has been noticed in Tell Tweini between MB IIB and LB I. Nevertheless, it is significant that neither PWS nor PBR have yet been identified. This situation mirrors again the assemblages of Eastern Cyprus, where both PWS and PBR are very scarce. A similar situation can be noticed at Ugarit.²⁴⁵

²³⁶ Karageorghis 2011, 381.

²³⁷ Anderson 1988, Appendix C, 517, for the distribution of imported wares.

²³⁸ Bikai 1978, table 13A.

²³⁹ Du Mesnil du Buisson 1932, 175, 178, fig. 3.

²⁴⁰ Curvers and Schwartz 1997, fig. 20:5, 6, 8.

²⁴¹ Yon 2001, 122.

²⁴² Pruß and Bagdo 2002, 325, Abb. 6:d.

²⁴³ See for example McGeough 2007, 324-333.

²⁴⁴ Åström 1966, 82-90.

²⁴⁵ Vilain 2015.

BCWM, one of the markers of LB, is recorded for the first time in Level 7DE. In this level, we can notice the presence of WP VI, as well as MN, BR I, WS I and WSh. The persistence of WP VI is not surprising, as it is still found at the beginning of LC IB in Cyprus.²⁴⁶ BR II and WS II productions are also attested, suggesting that Level 7DE was not only used during LB IA but also in LB IB. The beginning of LBA at Tell Tweini sees the introduction of new Cypriot wares and shapes among the imported goods, showing an intensification of trade and a diversification of available Cypriot productions.

The presence of Cypriot pottery at Tell Tweini reached a peak in Level 7BC, which is clearly of LB II date. MN, BR II, WSh and WS II wares dominate the repertoire of imported productions. NAA analyses run on the PWWM jug CYP 342 (Level 7A)²⁴⁷ bring us to consider the possibility of direct or indirect connections between Tell Tweini and Southern Cyprus. Indeed, sites such as Hala Sultan Tekke became increasingly important during the LC period and their potential role in trade with the Northern Levant should not be neglected. At the end of LB II, the increasing presence of WS II late bowls at Tell Tweini is symptomatic of the phenomenon of social inflexion that then affects Cypriot imports. Manufactured in large series, decorated without care, these bowls were apparently more commonly used by the inhabitants of the Levantine coast in their everyday life.

The geographical proximity between Cyprus and the Northern Levant favoured the development of connections that are gradually increasing in frequency and intensity from MB IIB to LB II. The numerous imports found at Ugarit as well as written sources show that the city had close links with the island of Cyprus.²⁴⁸ Tell Tweini undoubtedly benefited from this proximity and from its strategic position on the maritime trade route along the Levantine coast.²⁴⁹ The excavations at Tell Tweini have shown that an important part of the imported Cypriot wares was intended for local consumption. However, the site could have contributed to the redistribution of Cypriot imports at a regional scale, as suggested by the discovery of WS II pottery at the neighbouring site of Tell Siyannu.²⁵⁰ An in depth examination of the Cypriot sequence at Tell Tweini as well as the complete study of the trading systems in which the site was involved should provide promising outputs in the future.

²⁴⁶ Åström 1972c, 700.

²⁴⁷ See above, n. 197.

²⁴⁸ Malbran-Labat 2004.

²⁴⁹ Sauvage 2012, 273-274.

²⁵⁰ Al-Maqdissi 2012, fig. 12.

LIST OF ABBREVIATIONS

ABBWLS:	Alternative Broad Band and Wavy Line Style
BBS:	Broad Band Style
BC:	Bichrome Ware
BLWM:	Black Lustrous Wheel-made Ware
BR:	Base-Ring Ware
CLS:	Cross Line Style
CP:	Composite Ware
EB:	Early Bronze Age
ES:	Eyelet Style
FBBS:	Framed Broad Band Style
IA:	Iron Age
LB:	Late Bronze Age
LC:	Late Cypriot
MB:	Middle Bronze Age
MC:	Middle Cypriot
MN:	Monochrome Ware
PLS:	Pendent Line Style
PWWM:	Plain White Wheel-made Ware
RLWM:	Red Lustrous Wheel-made Ware
RoB:	Red-on-Black Ware
RoR:	Red-on-Red Ware
TLS:	Tangent Line Style
WLWM:	White Lustrous Wheel-made Ware
WP:	White Painted Ware
WS:	White Slip Ware
WSh:	White Shaved Ware

BIBLIOGRAPHY

- Al-Maqdissi M. 2012: Notes d'Archéologie Levantine XXVII. Vingt ans de fouilles archéologiques à Tell Sianu dans la plaine de Jablé (1999-2009), in: V. Matoïan *et al.* (eds.), *Etudes Ougaritiques II* (Ras Shamra-Ougarit XX), Leuven, 297-315.
- Al-Maqdissi M., M. Luciani, D. Morandi Bonacossi, M. Novák and P. Pfälzner (eds.) 2002: *Excavating Qatna* (Documents d'Archéologie Syrienne IV), Damascus.
- Al-Maqdissi M. and V. Matoïan 2008: La céramique découverte par C. Schaeffer dans le palais royal d'Ougarit: remarques générales, in: V. Matoïan (dir.), *Le mobilier du palais royal d'Ougarit* (Ras Shamra-Ougarit XVII), Lyon, 127-155.
- Aloupi E., V. Perdikatsis and A. Lekka 2001: Assessment of the White Slip Classification Scheme based on Physico-chemical Aspects of the Technique, in: V. Karageorghis (ed.), *The White Slip Ware of Late Bronze Age Cyprus. Proceedings of an International Conference in honour of Malcom Wiener, Nicosia, 29th-30th October 1998*, Vienna, 15-26.
- Anderson W. P. 1988: *Sarepta I: The Late Bronze and Iron Age Strata of Area II, Y*, Philadelphia.

- Artzy M. 2001: A Study of the Cypriote Bichrome Ware: Past, Present and Future, in: P. Åström (ed.), *The Chronology of Base-Ring Ware and Bichrome Wheel-Made Ware. Proceedings of a Colloquium held in the Royal Academy of Letters, History and Antiquities, Stockholm, May 18-19, 2000*, Stockholm, 157-174.
- 2007: On the Origin(s) of the Red and White Lustrous Wheel-made Ware, in: I. Hein (ed.), *The Lustrous Wares of Late Bronze Age Cyprus and the Eastern Mediterranean, Papers of a Conference, Vienna 5th-6th of November 2004*, Vienna, 11-19.
- Artzy M., F. Asaro, I. Perlman 1974: The Origin of the “Palestinian” Bichrome Ware, *JAOS* 93, 446-461.
- Åström P. 1966: *Excavations at Kalopsidha and Ayios Iakovos in Cyprus* (SIMA II), Lund.
- 1972a: *The Swedish Cyprus Expedition IV, Part 1B. The Middle Cypriote Bronze Age*, Lund.
- 1972b: *The Swedish Cyprus Expedition IV, Part 1C. The Late Cypriote Bronze Age. Other Arts and Crafts, Relative and Absolute Chronology, Foreign Relations, Historical Conclusions*, Lund.
- 1972c: *The Swedish Cyprus Expedition IV, Part 1D. The Late Cypriote Bronze Age. Architecture and Pottery*, Lund.
- 2001: Bichrome Hand-made Ware and Bichrome Wheel-made Ware on Cyprus, in: P. Åström (ed.), *The Chronology of Base-Ring Ware and Bichrome Wheel-Made Ware, Proceedings of a Colloquium held in the Royal Academy of Letters, History and Antiquities, Stockholm, May 18-19, 2000*, Stockholm, 131-142.
- 2007: White Painted V Eye-pitchers in Cyprus and the Levant, *Cahiers du Centre d'Etudes Chypriotes* 37, 97-114.
- Badre L. 1997: Bey 003 Preliminary Report. Excavations of the American University of Beirut Museum 1993-1996, *Bulletin d'Archéologie et d'Architecture Libanaises* 2, 6-93.
- 2006: Tell Kazel-Simyra: A Contribution to a Relative Chronological History in the Eastern Mediterranean during the Late Bronze Age, *Bulletin of the American Schools of Oriental Research* 343, 65-95.
- Bergoffen C. 2005: *The Cypriot Bronze Age Pottery from Sir Leonard Woolley's excavations at Alalakh (Tell Atchana)*, Vienna.
- Bikai P. M. 1978: *The Pottery of Tyre*, Warminster.
- Buhl M.-L. 1983: *Sukas VII. The Near Eastern Pottery and Objects of other Materials from the Upper Strata*, Copenhagen.
- Caubet A. and R. S. Merrillees 1997: Les askoi anthropomorphes aux périodes CA et CM, in: V. Karageorghis et al. (eds.), *Four Thousand Years of Images on Cypriot Pottery, Proceedings of the Third International Conference of Cypriote Studies, Nicosia, 3-4 May, 1996*, Nicosia, 15-25.
- Caubet A. 2007: The Lustrous Wares of LB Cyprus and the Eastern Mediterranean, in: I. Hein (ed.), *The Lustrous Wares of Late Bronze Age Cyprus and the Eastern Mediterranean, Papers of a Conference, Vienna 5th-6th of November 2004*, Vienna, 37-42.
- Charaf H. 2006 : Les céramiques importées de l'Ouest, in: J.-P. Thalmann (ed.), *Arqa - I. Les niveaux de l'âge du Bronze*, Beyrouth, 173-193.
- 2008: Arqa during the Bronze Age: Connections with the West, in: C. Doumet-Serhal et al. (eds.), *Networking Patterns of the Bronze and Iron Age Levant. The*

- Lebanon and its Mediterranean Connections, on the occasion of the symposium "Interconnections in the Eastern Mediterranean: The Lebanon in the Bronze and Iron Ages", 4-9 November 2008, Beirut*, London, 121-166.
- Charaf-Mullins 2010-2011: Cypriot imported pottery from the Middle Bronze Age in Lebanon, *Berytus* LIII-LIV, 147-167.
- Chehab M. 1940: Tombes Phéniciennes: Majdalouna, *Bulletin du Musée de Beyrouth* IV, 36-53.
- Courbin P. 1986: Bassit, *Syria* 63, 175-220.
- Courtois L. 1969: Le mobilier funéraire céramique de la tombe 4253 du Bronze Récent (Ville Sud d'Ugarit), in: Cl. F.-A. Schaeffer (dir.), *Ugaritica VI*, Paris, 120-137.
- Courtois J.-C. 1978: Corpus céramique de Ras Shamra-Ugarit. Niveaux historiques d'Ugarit, Bronze moyen et Bronze récent. Deuxième partie, in: Cl. F.-A. Schaeffer (dir.), *Ugaritica VII*, Paris, 196-370.
- 1981: *Alasia II: Les tombes d'Enkomi, le mobilier funéraire (fouilles C. F.-A. Schaeffer 1947-1965)* (Mission archéologique d'Alasia V), Paris.
- Crewe L. 2007: *Early Enkomi: Regionalism, Trade and Society at the beginning of the Late Bronze Age on Cyprus* (BAR International Series 1706), Oxford.
- 2009: Tomb 1 (1956) at Galinoporni and the Middle-Late Cypriot transition in the Karpas Peninsula, *Report of the Department of Antiquities, Cyprus*, 89-117.
- Curvers H. H. and G. M. Schwartz 1997: Umm el-Marra, a Bronze Age Urban Center in the Jabbul Plain, Western Syria, *American Journal of Archaeology* 101, 201-227.
- Dikaios P. 1969: *Enkomi Excavations 1948-1958*, Mainz am Rhein.
- Dothan T. and A. Ben-Tor 1983: *Excavations at Athienou, Cyprus: 1971-1972* (Qedem 16), Jerusalem.
- Doumet-Serhal C. 1996: *Les Fouilles de Tell el-Ghassil de 1972 à 1974: étude du matériel* (Bibliothèque archéologique et historique 146), Beyrouth.
- 2008: The British Museum Excavation at Sidon: Markers for the Chronology of the Early and Middle Bronze Age in Lebanon, in: M. Bietak and E. Czerny (eds.), *The Bronze Age in the Lebanon: Studies on the Archaeology and Chronology of Lebanon, Syria and Egypt*, Vienna, 11-45.
- Doumet-Serhal C., A. Rabate and A. Resek (eds.) 2008: *Networking Patterns of the Bronze and Iron Age Levant. The Lebanon and its Mediterranean Connections, on the occasion of the symposium "Interconnections in the Eastern Mediterranean: The Lebanon in the Bronze and Iron Ages", 4-9 November 2008, Beirut*, London.
- Du Mesnil du Buisson R. 1928: L'ancienne Qatna ou les ruines d'El-Mishrifé au N.-E. de Homs (Emèse): Deuxième campagne de fouilles, *Syria* IX, 6-24.
- 1932: Une campagne de fouilles à Khan Sheikhoun, *Syria* XIII, 171-188.
- Dunand M., A. Bounni and N. Saliby 1964: Fouilles de Tell Kazel, rapport préliminaire, *Annales Archéologiques Arabes Syriennes* XIV, 3-15.
- Ehrich A. M. H., D. Wyckoff, E. O. Forrer 1939: *Early Pottery of the Jebel Region*, Philadelphia.
- Eriksson K. O. 1993: *Red Lustrous Wheel-made Ware* (SIMA 103), Jonsered.
- Fugmann E. 1958: *Hama: fouilles et recherches de la Fondation Carlsberg (1931-1938). II.1 L'architecture des périodes pré-hellénistiques*, Copenhagen.
- Galliano G. and Y. Calvet (eds.): *Le royaume d'Ougarit: aux origines de l'alphabet*, Lyon.

- Gorris E. 2012: The clay rattles from Tell Tweini (Syria) and their contribution to the musical tradition of the Ancient Near East, in: T. Boiy *et al.* (eds.), *The Ancient Near East, a Life! Festschrift Karel Van Lerberghe*, Leuven, 235-247.
- Guigues P.-E. 1938: Lébé'a, Kafer-Garra, Qrayé: Nécropoles de la région sidonienne, *Bulletin du Musée de Beyrouth* II, 27-72.
- Heinz M. 2010: *Kamid el-Loz. Intermediary between Cultures. More than 10 years of Archaeological Research in Kamid el-Loz (1997 to 2007)* (BAAL Hors Série VII), Beyrouth.
- Iamoni M. 2012: *The late MBA and LBA Pottery Horizons at Qatna: Innovation and Conservation in the Ceramic Tradition of a Regional Capital and the Implications for the Second Millennium Syrian Chronology* (SAQ 2, Documents d'Archéologie Syrienne 20), Udine.
- Jans G. and J. Bretschneider 2019: A Collective Middle Bronze Age II Tomb at Tell Tweini Field A, in: J. Bretschneider and G. Jans (eds.), *About Tell Tweini (Syria): Artefacts, Ecofacts and Landscape. Research Results of the Belgian Mission* (Orientalia Lovaniensia Analecta 281), Leuven, 201-241.
- Johnson J. 1980: *Maroni de Chypre*, Göteborg.
- Jung 2010: La céramique de typologie mycénienne, in: M. Al-Maqdissi *et al.* (eds.), *Tell Tweini. Onze campagnes de fouilles syro-belges (1999-2010)* (Documents d'Archéologie Syrienne), Damascus, 115-123.
- Karageorghis V. 2009: Interconnections between Cyprus and Lebanon from the Bronze Age to the end of the Archaic Period, in: A.-M. Maïla-Afeiche (dir.), *Interconnections in the Eastern Mediterranean. Lebanon in the Bronze and Iron Ages. Proceedings of the International Symposium, Beirut, 2008* (Bulletin d'Archéologie et d'Architecture Libanaises Hors-Série VI), Beirut, 325-337.
- 2011: Mycenaean Cypriote and related material, in: C. Doumet-Serhal (ed.), *And Canaan begat Sidon his firstborn... Gen. 10, 15; I Chr. 1, 13: a tribute to Dr. John Curtis on his 65th birthday: 12 years of excavations in Sidon by the British Museum in conjunction with the Department of Antiquities of Lebanon*, Beirut, 372-382.
- Knappett C. and V. Kilikoglou 2007: Provenancing Red Lustrous Wheelmade Ware: Scale of analysis and floating fabrics, in: I. Hein (ed.), *The Lustrous Ware of Late Bronze Age Cyprus and the Eastern Mediterranean*, Vienna, 115-140.
- Koehl 1985: *Sarepta III: The Imported Bronze & Iron Age Wares from Area II, X*, Philadelphia.
- Kozal 2010: Cypriot Pottery, in: K. A. Yener (ed.), *Tell Atchana, Ancient Alalakh. Volume 1, The 2003-2004 Excavation Seasons*, Istanbul, 67-80.
- Kulemann-Ossen S. 2006: Notes on Late Bronze Age Pottery from Kamid el-Loz, *BAAL* 10, 97-103.
- Loud G. 1948: *Megiddo II. Seasons of 1935-39*, Chicago.
- Luciani M. 2008: The Late MB to Early LBA in Qatna with Special Emphasis on Decorated and Imported Pottery, in: M. Bietak and E. Czerny (eds.), *The Bronze Age in the Lebanon: Studies on the Archaeology and Chronology of Lebanon, Syria and Egypt*, Vienna, 115-127.
- Maguire L. 1995: Tell El-Dab'a: The Cypriot Connection, in: W. V. Davies and L. Schofield (eds.), *Egypt, the Aegean, and the Levant: Interconnections in the Second Millennium B.C.*, London, 54-65.
- Maïla-Afeiche A.-M. 2009: Exposition au Musée national de Beyrouth. Échanges en Méditerranée orientale – Le Liban aux Ages du Bronze et du Fer, in: A.-M. Maïla-Afeiche, *Interconnections in the Eastern Mediterranean. Lebanon in*

- the Bronze and Iron Ages. Proceedings of the International Symposium, Beirut, 2008* (Bulletin d'Archéologie et d'Architecture Libanaises Hors-Série VI), Beirut, 515-532.
- Malbran-Labat F. 2004: Alašiya et Ugarit, *Res Antiquae* I, 365-377.
- Mallet J. 2013: Ras Shamra - Ougarit (Syrie), 62^e campagne, 2002. Poterie des chantiers 173 et 178 dans le Palais Nord, in: V. Matoïan and M. Al-Maqdissi (eds.), *Etudes Ougaritiques III* (Ras Shamra-Ougarit XXI), Leuven, 321-345.
- Matoïan V. 2004: Un "hochet" chypriote *White Painted* à Ougarit (Syrie), *Report of the Department of Antiquities, Cyprus*, 105-113.
- McGeough K. M. 2007: *Exchange Relationships at Ugarit* (ANES, Supplement 26), Leuven.
- Mielke D. P. 2007: Red Lustrous Wheelmade Ware from Hittite Contexts, in: I. Hein (ed.), *The Lustrous Wares of Late Bronze Age Cyprus and the Eastern Mediterranean, Papers of a Conference, Vienna 5th-6th of November 2004*, Vienna, 155-168.
- Monchambert J.-Y. 2004: *La céramique d'Ougarit: campagnes de fouilles 1975 et 1976* (Ras Shamra-Ougarit XV), Paris.
- 2011 : La céramique des sondages de 1992 et 2005, in: O. Callot (ed.), *Les sanctuaires de l'acropole d'Ougarit: Les temples de Baal et de Dagan* (Ras Shamra-Ougarit XIX), Lyon, 109-121.
- Mountjoy P. A. and H. Mommsen 2015: Neutron Activation Analysis of Aegean-style IIC Pottery from 11 Cypriot and Various Near Eastern Sites, *Egypt and the Levant* XXV, 421-508.
- Nicolaou I. and K. Nicolaou 1989: *Kazaphani, a Middle / Late Cypriot tomb at Kazaphani-Ayios Andronikos: T.2 A, B*, Nicosia.
- Nys K. 2001: Base-ring Bull-shaped vessels in context, in: P. Åström (ed.), *The Chronology of Base-Ring Ware and Bichrome Wheel-Made Ware: Proceedings of a Colloquium Held in the Royal Academy of Letters, History and Antiquities, Stockholm, May 18-19, 2000*, Stockholm, 95-122.
- Nys K. and K. Middernacht 2010: The Cypriot pottery from field A, in: M. Al-Maqdissi et al. (eds.), *Tell Tweini. Onze campagnes de fouilles syro-belges (1999-2010)* (Documents d'Archéologie Syrienne), Damascus, 123-130.
- Oldenburg H. and J. Rohweder 1981: *The Excavations at Tall Daruk (Usnu?) and 'Arab al-Mulk (Paltos)*, Copenhagen.
- Pamir H. 2013: Sabuniye: A Late Bronze-Iron Age Port Settlement on the Northeastern Mediterranean Coast, in: K. A. Yener (ed.), *Across the Border: Late Bronze-Iron Age Relations Between Syria and Anatolia. Proceedings of a Symposium Held at the Research Center of Anatolian Studies, Koç University, Istanbul. May 31 - June 1, 2010*, Leuven, 173-195.
- Penner S. 2006: *Kamid el-Loz: Tempelanlagen T3 bis T1, Palastanlagen P5 bis P1/2, Königsgrab ('Schatzhaus') und 'Königliche Werkstatt'*, Bonn.
- Pilides D. 1992: Monochrome Ware: Its Regional Variation, in: P. Åström (ed.), *Acta Cypria: Acts of an International Congress on Cypriote Archaeology held in Göteborg on 22-24 August, 1991. Part 2*, Jonsered, 289-301.
- 1996: Storage jar as evidence of the economy of Cyprus in the Late Bronze Age, in: V. Karageorghis and D. Michaelides (eds.), *The Development of the Cypriot Economy: from the Prehistoric Period to the Present Day*, Nicosia, 107-124.
- 2000: *Pithoi of the Late Bronze Age in Cyprus: Types from the major sites of the period*, Cyprus, Nicosia.
- Popham M. R. 1972: White Slip Ware, in: P. Åström (ed.), *The Swedish Cyprus Expedition IV, Part 1C. The Late Cypriote Bronze Age. Other Arts and Crafts, Relative*

- and Absolute Chronology, Foreign Relations, Historical Conclusions*, Lund, 431-471.
- Pruß A. and A. M. Bagdo 2002: Tell Fecheriye. Bericht über die erste Kampagne der deutsch-syrischen Ausgrabungen 2001, *Mitteilungen der Deutschen Orient Gesellschaft* 134, 311-331.
- Riis P. J. 1963: L'activité de la Mission archéologique danoise sur la côte phénicienne en 1961, *Annales Archéologiques Syriennes* XIII, 211-225.
- Riis P. J. and M.-L. Buhl 2007: *Hama: fouilles et recherches de la fondation Carlsberg (1931-1938)*, Copenhagen.
- Saidah R. 2004: *Sidon et la Phénicie méridionale au Bronze récent: À propos des tombes de Dakerman*, Beyrouth.
- Sauvage C. 2012: *Routes maritimes et systèmes d'échanges internationaux au Bronze récent en Méditerranée orientale*, Lyon.
- Salles J.-F. 1980: *La Nécropole "K" de Byblos*, Paris.
- Schaeffer Cl. F.-A. 1932: Les fouilles de Minet-El-Beida et de Ras-Shamra. Troisième campagne (printemps 1931). Rapport sommaire, *Syria* XIII, 1-27.
- 1933: Les fouilles de Minet-El-Beida et de Ras-Shamra. Quatrième campagne (printemps 1932): Rapport sommaire, *Syria* XIV, 93-127.
- 1936: Les fouilles de Ras Shamra-Ugarit, septième campagne (Printemps 1935), *Syria* XVII, 104-148.
- 1939a: *Ugaritica. I, Etudes relatives aux découvertes de Ras Shamra* (Bibliothèque archéologique et historique 3), Paris.
- 1939b: Les fouilles de Ras Shamra-Ugarit, dixième et onzième campagnes (automne et hiver 1938-39), *Syria* XX, 277-292.
- 1949: *Ugaritica. II, Nouvelles études relatives aux découvertes de Ras Shamra* (Bibliothèque archéologique et historique 5), Paris.
- Thrane H. 1978: *Sukas IV. A Middle Bronze Age collective grave on Tall Sukas*, Copenhagen.
- Vansteenhuyse K. 2008: The ceramic material from Tell Tweini – Field A, in: J. Bretschneider and K. Van Lerberghe (eds.), *In search of Gibala: an Archaeological and Historical Study based on Eight Seasons of Excavations at Tell Tweini (Syria) in the A and C fields (1999-2007)* (Aula Orientalis Supplementa 24), Barcelona, 103-140.
- 2010: The ceramic material from Tell Tweini – Field A, in: M. Al-Maqdissi *et al.* (eds.), *Tell Tweini. Onze campagnes de fouilles syro-belges (1999-2010)* (Documents d'Archéologie Syrienne), Damascus, 95-105.
- Vaughan S. J. 1987: *A Fabric Analysis of Late Cypriot Base-Ring Ware: Studies in Ceramic Technology, Petrology, Geochemistry and Mineralogy*, London.
- 1991: Material and Technical Classification of Base Ring Ware: A New Fabric Typology, in: J. A. Barlow *et al.* (eds.), *Cypriot Ceramics: Reading the Prehistoric Record*, Philadelphia, 119-130.
- Vilain S. 2015: *Pour une archéologie des échanges en Méditerranée orientale. La céramique chypriote au Levant nord aux âges du Bronze moyen et du Bronze récent*, Thèse de doctorat inédite, Université de Strasbourg, Strasbourg.
- Yon M. 2001: White Slip Ware in the Northern Levant, in: Karageorghis V. (ed.), *The White Slip Ware of Late Bronze Age Cyprus. Proceedings of an International Conference organized by the Anastasios G. Leventis foundation, Nicosia, in Honour of Malcom Wiener, Nicosia, 29th-30th October 1998*, Vienna, 117-125.

- Yon M. and A. Caubet 1990: La céramique importée de l'Ouest, in: L. Badre *et al.* (eds.), *Tell Kazel, Syria. Excavations of the AUB Museum, 1985-1987, Preliminary Reports* (Berytus XXXVIII), 98-124.
- Yon M., P. Lombard and M. Renisio 1987: L'organisation de l'habitat: Les maisons A, B et E, in: M. Yon and J. Mallet (eds.), *Le Centre de la ville: 38^e-44^e campagnes (1978-1984)* (Ras Shamra-Ougarit III), Paris, 11-129.

CATALOGUE

*White Painted III-IV Pendent Line Style***Catalogue number:** CYP 1 (Fig. 1)**Excavation number:** TWE-A-01027-C-022**Level:** 8CD-7BC**Description:** Body fragment, closed vessel. Black paint: groups of seven vertical lines alternating with a thick wavy line.**References:** Vansteenhuyse 2008, 106**Catalogue number:** CYP 2 (Fig. 2)**Excavation number:** TWE-A-00159-C-005**Level:** 8-7**Description:** Body fragment, closed vessel. Black paint: groups of seven vertical lines alternating with thin wavy lines.**References:** Vansteenhuyse 2008, 106**Catalogue number:** CYP 3**Excavation number:** TWE-A-00928-C-007**Level:** 8-7**Description:** Body fragment, closed vessel.**References:** Vansteenhuyse 2008, 106**Catalogue number:** CYP 4**Excavation number:** TWE-A-01061-C-010**Level:** 8AB-7DE**Description:** Body fragment, closed vessel. Very hard fabric (2.5 YR 6/6 "light red"), lustrous slip (7.5 YR 7/6 "reddish yellow"), black rather mat paint.*White Painted IV Ware***Catalogue number:** CYP 5 (Figs. 3a-b, 69)**Excavation number:** TWE-A-00193-C-012**Level:** (8AB-7)DE**Description:** Rim and handle fragment of a bowl. White slip, black mat paint: groups of crossed lines on the outside; two wavy lines and a horizontal band on the inside, below the rim.**References:** Nys and Middernacht 2010, 124, fig. 1*White Painted IV-VI Cross Line Style***Catalogue number:** CYP 6 (Fig. 4)**Excavation number:** TWE-A-00919-C-010**Level:** 8AB**Description:** Body fragment, closed vessel. Light reddish-yellow slip, two crossed groups of straight lines in brownish paint.**References:** Vansteenhuyse 2008, 106**Catalogue number:** CYP 7 (Fig. 70)**Excavation number:** TWE-A-01055-C-010, 019, 025**Level:** 8AB**Description:** Body fragments of a closed vessel. Groups of five lines crossing each other.**References:** Vansteenhuyse 2008, 106, fig. 2:3; Vansteenhuyse 2010, ill. 7.11**Catalogue number:** CYP 8 (Fig. 5)**Excavation number:** TWE-A-01027-C-027**Level:** 8CD-7BC**Description:** Body fragment, closed vessel. Light slip, groups of crossed lines in black paint.**References:** Vansteenhuyse 2008, 106**Catalogue number:** CYP 9 (Fig. 71)**Excavation number:** TWE-A-00840-C-080**Level:** 7BC**Description:** Body fragment, closed vessel. Groups of five lines crossing each other.**Catalogue number:** CYP 10**Excavation number:** TWE-A-00114-C-048**Level:** 6AB**Description:** Body fragment, closed vessel.**Catalogue number:** CYP 11**Excavation number:** TWE-A-01026-C-050**Level:** 8AB-7**Description:** Body fragment, closed vessel.**Catalogue number:** CYP 12**Excavation number:** TWE-A-01027-C-038, 042**Level:** 8CD-7BC**Description:** Body fragment, closed vessel.**Catalogue number:** CYP 13**Excavation number:** TWE-A-01027-C-015**Level:** 8CD-7BC**Description:** Shoulder fragment, closed vessel.

Catalogue number: CYP 14 (Fig. 6)

Excavation number: TWE-A-00917-C-017

Level: 7DE

Description: Body fragment, closed vessel. Light slip, red paint: part of a horizontal band, two groups of six lines crossing at their extremity.

Catalogue number: CYP 15

Excavation number: TWE-A-01027-C-025

Level: 8CD-7BC

Description: Body fragment, closed vessel.

Catalogue number: CYP 16

Excavation number: TWE-A-01027-C-028

Level: 8CD-7BC

Description: Shoulder fragment, closed vessel.

Catalogue number: CYP 17

Excavation number: TWE-A-01027-C-037

Level: 8CD-7BC

Description: Body fragment, closed vessel.

Catalogue number: CYP 18

Excavation number: TWE-A-01047-C-002

Level: 8AB(-7DE)

Description: Body fragment, closed vessel.

Catalogue number: CYP 19

Excavation number: TWE-A-01055-C-014, 018, 027, 017

Level: 8AB

Description: Body fragment, closed vessel.

Catalogue number: CYP 20

Excavation number: TWE-A-01055-C-032

Level: 8AB

Description: Body fragment, closed vessel.

Catalogue number: CYP 21

Excavation number: TWE-A-01091-C-003

Level: 8AB

Description: Body fragment, closed vessel.

White Painted V Cross Line Style

Catalogue number: CYP 22

Excavation number: TWE-A-00838-C-062

Level: 7BC

Description: Body fragment, closed vessel.

White Painted Cross Line Style (Levantine imitation?)

Catalogue number: CYP 23 (Figs. 7, 72)

Excavation number: TWE-A-00934-C-002

Level: 8AB

Description: Jug with an everted rim, a slightly concave neck, a globular body and a rounded bottom. Vertical handle from mouth to shoulder. Painted decoration in brownish mat paint: three horizontal lines at each extremity of the neck, a cross at the base. From the back of the jug, on the shoulders, two groups of four lines that cross in front of the body, below which are groups of four vertical lines. In addition, three horizontal parallel lines on the top of the body and four concentric circles at the base.

References: Hameeuw *et al.* 2008, 147; Vansteenhuyse 2008, 106, fig. 2:5; Vansteenhuyse 2010, 111, ill. 7:13

White Painted Zigzag Style

Catalogue number: CYP 24 (Fig. 8)

Excavation number: TWE-A-01025-C-017

Level: 7DE?

Description: Body fragment of a closed vessel. Yellowish slip, black decoration: two zigzag lines between pairs of vertical lines.

References: Vansteenhuyse 2008, 106

White Painted V Framed Broad Band Style

Catalogue number: CYP 25 (Fig. 9)

Excavation number: TWE-A-00230-C-013

Level: 8AB

Description: Body fragment of an amphora with a vertical handle. Light reddish-yellow slip, red painted decoration: a large band framed by two thin lines on both sides of the handle and two vertical lines on the back.

References: Vansteenhuyse 2008, 106, fig. 2:4; Vansteenhuyse 2010, ill. 7.12

Catalogue number: CYP 26 (Figs. 10, 73)

Excavation number: TWE-A-01027-C-021

Level: 8CD-7BC

Description: Body fragment of a closed vessel, yellowish slip, red painted decoration: a thick

horizontal band framed by two lines, below which is a vertical grid band framed by pairs of straight lines.

References: Vansteenhuyse 2008, 106, fig. 2:2; Vansteenhuyse 2010, ill. 7.10

Catalogue number: CYP 27

Excavation number: TWE-A-02607-C-022

Level: 8

Description: Body fragment, closed vessel.

White Painted V Composite Style

Catalogue number: CYP 28 (Fig. 11a)

Excavation number: TWE-A-00177-C-051

Level: 8AB

Description: Jug with an everted rim, a concave neck, a globular body and a flattened base. Vertical handle from rim to shoulder. Complete. Slip: 2.5Y 7/4, pale yellow. Black painted decoration: on the rim, one horizontal line that extends on both sides of the handle; six bands on the neck and another one at the junction of the neck and the body. On the main body, two black bands flanked by three vertical lines left and right separate the vessel in two halves. In between those vertical motifs, on the superior part of the body, are eight horizontal lines on one side, with a wavy line in between, and seven on the other side. From the lowest of these lines, another two black bands are vertically flanked by three lines left and right. In the space to the right of the handle is a black cross. One black line on the handle.

References: Vansteenhuyse 2008, 106; Vansteenhuyse 2010, 101

Catalogue number: CYP 29 (Fig. 11b)

Excavation number: TWE-A-00177-C-032

Level: 8AB

Description: Jug with an everted rim, a slightly concave neck, a globular body and a flattened base. Vertical handle from rim to shoulder. H.: 22,5 cm. Complete. Slip: 2.5Y 7/4 "pale yellow." Black to dark reddish-brown painted decoration: on the rim, one horizontal line that extends on both sides of the handle; five bands on the neck and another one at the junction of the neck and the body. On the main body, four vertical bands flanked by three lines left and right. In one of the four open spaces is a wavy line framed by groups

of three straight lines. The lines end sharply at the base. The back of the handle has four parallel zig-zag lines.

References: Vansteenhuyse 2008, 106; Vansteenhuyse 2010, 101

Catalogue number: CYP 30 (Figs. 11c, 74)

Excavation number: TWE-A-00177-C-023

Level: 8AB

Description: Jug with an everted rim, a concave neck, a globular body and a flattened base. Vertical handle from rim to shoulder. H.: 25,5 cm. Complete. Slip: 5YR "reddish-yellow" (surface). Paint: 10R 4/8 "red". Decoration: on the rim, one horizontal line that extends on both sides of the handle; five bands on the neck and another one at the junction of the neck and the body. In front of the body and behind the handle starts a vertical wavy line framed by groups of nine straight lines. In between those run fifteen parallel horizontal lines on the upper part of the body. From those, on both sides, start nine vertical lines, one wavy line and nine more vertical lines. All vertical lines cross under the base.

References: Vansteenhuyse 2008, 106; Vansteenhuyse 2010, 100

Catalogue number: CYP 31 (Fig. 12)

Excavation number: TWE-A-02609-C-001

Level: 8AB

Description: Body fragment of a closed vessel, reddish-yellow slip, red painted decoration: six horizontal thick lines, among them one wavy line, below which are three vertical lines.

Catalogue number: CYP 32 (Fig. 75)

Excavation number: TWE-A-00043-C-008

Level: 7BC

Description: Body fragment of a closed vessel. Painted decoration: one thick horizontal band followed by three thinner lines, below which is one vertical wavy line framed by groups of straight lines. In the blank space: one oblique wavy line framed by dots.

White Painted V Eyelet Style

Catalogue number: CYP 33 (Fig. 76)

Excavation number: TWE-A-00177-C-083

Level: 8AB

Description: Juglet with a pinched mouth, a concave neck, an ovoid body, a handle from the mouth to the shoulder and a conical pedestal-base. Whitish slip, painted decoration: five horizontal lines on the neck, one band at the junction of the neck and the body. Below it, on the shoulder, one band filled with dotted circles alternating with groups of vertical lines, followed by another thick horizontal band and a thin line.

References: Vansteenhuyse 2008, 106; Vansteenhuyse 2010, 101

Catalogue number: CYP 34 (Fig. 77)

Excavation number: TWE-A-00177-C-088

Level: 8AB

Description: Juglet with a pinched mouth, a concave neck, an ovoid body with an angular shoulder, a handle from the mouth to the shoulder and a conical pedestal-base. Whitish slip, painted decoration: five horizontal lines on the neck, one band at the junction of the neck and the body. On the shoulder is one zigzag line framed by two straight lines and followed by another thick horizontal band. Below it is a vertical band filled with a broken line forming dotted triangles. In the blank space is a horizontal wavy band filled with dots. Three horizontal bands on the lower body.

References: Vansteenhuyse 2008, 106; Vansteenhuyse 2010, 101

Catalogue number: CYP 35 (Fig. 78)

Excavation number: TWE-A-00177-C-0121

Level: 8AB

Description: Juglet with a pinched mouth, a concave neck, an ovoid body, a handle from the mouth to the shoulder and a conical pedestal-base. Pale slip, painted decoration: five horizontal lines on the neck, one band at the junction between the neck and the body. Under it, on the shoulder, one band filled with dotted circles alternating with groups of vertical lines, followed by another thick horizontal band, below which are a pair of vertical wavy lines and a vertical lattice band framed by groups of straight lines. Four horizontal bands at the transition to the base. A dotted circle ("eye-let") on each side of the pinched mouth.

References: Vansteenhuyse 2008, 106; Vansteenhuyse 2010, 101

Catalogue number: CYP 36

Excavation number: TWE-A-01027-C-002

Level: 8CD-7BC

Description: Body fragment of a juglet.

References: Vansteenhuyse 2008, 106

White Painted V Varia

Catalogue number: CYP 37 (Fig. 13)

Excavation number: TWE-A-00928-C-001

Level: 8-7

Description: Upper part of a jug with a round mouth, an everted rim, a cylindrical neck and the departure of a vertical handle. Very desurfaced, traces of horizontal bands in red paint on the neck.

Catalogue number: CYP 38 (Fig. 14)

Excavation number: TWE-A-00235-C-008

Level: 8AB

Description: Base and body fragment of a closed vessel, light reddish-yellow slip, groups of four vertical lines in red paint.

References: Vansteenhuyse 2008, 106

Catalogue number: CYP 39

Excavation number: TWE-A-00140-C-006

Level: 6-5

Description: Neck and shoulder of a large closed vessel.

Catalogue number: CYP 40 (Fig. 15)

Excavation number: TWE-A-02609-C-009

Level: 8AB

Description: Partial handle of a closed vessel. Reddish-yellow slip, red painted decoration: a line at the base, a band on each side, a vertical thick line on the back of the handle.

Catalogue number: CYP 41 (Fig. 16)

Excavation number: TWE-A-00159-C-003

Level: 8-7

Description: Body fragment of a closed vessel. Black to reddish-brown painted decoration: three straight lines, one wavy line and the beginning of a thicker band.

References: Vansteenhuyse 2008, 106

Catalogue number: CYP 42 (Fig. 17)

Excavation number: TWE-A-00230-C-008

Level: 8AB

Description: Body fragment of a closed vessel, yellowish slip, two horizontal bands in brown-reddish paint.

Catalogue number: CYP 43

Excavation number: TWE-A-01620-C-034

Level: 7BC

Description: Body fragment of a closed vessel. Painted decoration: two broad bands, a wavy line and the beginning of another band.

Catalogue number: CYP 44

Excavation number: TWE-A-03306-C-007

Level: 6-5

Description: Base fragment, closed vessel.

Catalogue number: CYP 45

Excavation number: TWE-A-00638-C-032

Level: 8-7BC

Description: Body fragment, closed vessel.

Catalogue number: CYP 46

Excavation number: TWE-A-00840-C-176

Level: 7BC

Description: Body fragment, closed vessel.

Catalogue number: CYP 47

Excavation number: TWE-A-01025-C-017, 034

Level: 7DE?

Description: Body fragment of a closed vessel, worn paint.

References: Vansteenhuyse 2008, 106

Catalogue number: CYP 48

Excavation number: TWE-A-01027-C-034, C-043

Level: 8CD-7BC

Description: Body fragment, closed vessel.

Catalogue number: CYP 49

Excavation number: TWE-A-01045-C-011

Level: 8AB-7BC

Description: Body fragment, closed vessel.

Catalogue number: CYP 50

Excavation number: TWE-A-01045-C-012

Level: 8AB-7BC

Description: Rim fragment, closed vessel.

Catalogue number: CYP 51

Excavation number: TWE-A-01047-C-003

Level: 8AB(-7DE)

Description: Body fragment, closed vessel.

Catalogue number: CYP 52

Excavation number: TWE-A-02607-C-017

Level: 8

Description: Body fragment, closed vessel.

Catalogue number: CYP 53

Excavation number: TWE-A-05605-C-008

Level: 7-4

Description: Body fragment, closed vessel.

White Painted V or VI Ware

Catalogue number: CYP 54

Excavation number: TWE-A-01061-C-019

Level: 8AB(-7DE)

Description: Base and body fragment of a tankard.

Catalogue number: CYP 55 (Fig. 18)

Excavation number: TWE-A-01061-C-009

Level: 8AB(-7DE)

Description: Body fragment of a closed vessel, buff slip, five lines in brown paint.

Catalogue number: CYP 56

Excavation number: TWE-A-00043-C-022

Level: 7BC

Description: Body fragment, closed vessel.

White Painted VI Ware

Catalogue number: CYP 57

Excavation number: TWE-A-00847-C-055

Level: 7BC

Description: Rim fragment of a closed vessel. Painted decoration: transversal strokes on the rim, broad band on the outer surface.

Catalogue number: CYP 58 (Fig. 19a, b)

Excavation number: TWE-A-00840-C-116

Level: 7BC

Description: Rim and body fragment of a teapot with a complete vertical handle from rim to shoulder. Yellowish slip, traces of horizontal lines in brown paint on the back of the handle.

Catalogue number: CYP 59

Excavation number: TWE-A-00915-C-032

Level: 7BC

Description: Rim fragment and vertical handle of a jug, traces of painted lines on the handle.

References: Nys and Middernacht 2010, 124

Catalogue number: CYP 60

Excavation number: TWE-A-00636-C-004

Level: 7BC

Description: Spout of a teapot.

Catalogue number: CYP 61

Excavation number: TWE-A-01011-C-011

Level: 7BC

Description: Spout of a teapot.

Catalogue number: CYP 62 (Fig. 20a)

Excavation number: TWE-A-00860-C-004

Level: 7DE

Description: Body fragment of a closed vessel with the attachment of a broken handle. White slip, linear decoration in reddish-brown paint.

Catalogue number: CYP 63 (Fig. 20b)

Excavation number: TWE-A-05581-C-021

Level: 7A

Description: Neck fragment of a closed vessel. White slip, two horizontal bands in black paint.

Catalogue number: CYP 64

Excavation number: TWE-A-00838-C-039

Level: 7BC

Description: Pointed base fragment of a closed vessel (rattle?).

Catalogue number: CYP 65

Excavation number: TWE-A-01097-C-074

Level: 7DE-BC

Description: Base fragment of a rattle.

References: Nys and Middernacht 2010, 125

Catalogue number: CYP 66

Excavation number: TWE-A-00909-C-039

Level: 7BC

Description: Handle of a jug, one painted line on both sides of the handle and four lines on the back.

Catalogue number: CYP 67

Excavation number: TWE-A-00915-C-014

Level: 7BC

Description: Vertical handle of a closed vessel, one painted line.

Catalogue number: CYP 68

Excavation number: TWE-A-00848-038

Level: 7BC

Description: Handle of a closed vessel.

Catalogue number: CYP 69

Excavation number: TWE-A-00874-C-011

Level: 7BC

Description: Body fragment of a closed vessel. One horizontal line just under the neck and five vertical lines starting from the neck.

Catalogue number: CYP 70

Excavation number: TWE-A-00855-C-085

Level: 7

Description: Body fragment with the handle of a closed vessel, traces of paint.

Catalogue number: CYP 71

Excavation number: TWE-A-01092-C-011

Level: 7BC

Description: Body fragment and onset of handle of a closed vessel, traces of worn paint.

Catalogue number: CYP 72

Excavation number: TWE-A-00830-C-039

Level: 7BC

Description: Body fragment of a closed vessel, very desurfaced, traces of a painted line.

Catalogue number: CYP 73

Excavation number: TWE-A-00945-C-010

Level: 7DE

Description: Body fragment, painted decoration: two horizontal lines and four vertical lines.

Catalogue number: CYP 74

Excavation number: TWE-A-00848-C-117

Level: 7BC

Description: Body fragment, closed vessel.

Catalogue number: CYP 75

Excavation number: TWE-A-00848-C-039

Level: 7BC

Description: Body fragment, closed vessel.

Catalogue number: CYP 76
Excavation number: TWE-A-00848-C-044
Level: 7BC
Description: Body fragment, closed vessel.

Catalogue number: CYP 77
Excavation number: TWE-A-01026-C-051
Level: 8AB-7
Description: Body fragment, closed vessel, worn paint.

Catalogue number: CYP 78
Excavation number: TWE-A-01064-C-001
Level: 8-7
Description: Body and base fragment, closed vessel.

Catalogue number: CYP 79
Excavation number: TWE-A-01097-C-016
Level: 7DE-AB
Description: Body fragment, closed vessel.

Catalogue number: CYP 80
Excavation number: TWE-A-00909-C-064
Level: 7BC
Description: Body fragment, closed vessel, painted linear decoration.

Catalogue number: CYP 81
Excavation number: TWE-A-01061-C-022
Level: 8AB(-7DE)
Description: Body fragment of a tankard, yellowish fabric, slightly soft. Clay: 10 YR 8/4 "very pale brown"; Slip: 2.5 Y 8/3 "pale yellow." Paint: sepia black.

Catalogue number: CYP 82
Excavation number: TWE-A-00948-C-033
Level: 8
Description: Rim fragment of an open vessel. Painted decoration: one horizontal line below the rim; two vertical lines under it. Diam.: 14 cm.

White Painted Hand-made Ware Varia

Catalogue number: CYP 83
Excavation number: TWE-A-01027-C-032
Level: 8CD-7BC
Description: Leg of a zoomorphic vessel.

Catalogue number: CYP 84
Excavation number: TWE-A-01026-C-040
Level: 8AB-7
Description: Fragment of an everted rim, closed vessel.

Catalogue number: CYP 85
Excavation number: TWE-A-02609-C-002, C-016
Level: 8AB
Description: Pinched rim and neck fragment of a closed vessel, traces of paint on the rim.

Catalogue number: CYP 86
Excavation number: TWE-A-07152-C-001
Level: (7?-)6
Description: Rim fragment, closed vessel.

Catalogue number: CYP 87
Excavation number: TWE-A-00114-C-056
Level: 6AB
Description: Rim fragment, closed vessel.

Catalogue number: CYP 88
Excavation number: TWE-A-00855-C-094
Level: 7
Description: Neck fragment, closed vessel.

Catalogue number: CYP 89
Excavation number: TWE-A-01024-C-029
Level: 8AB-7BC
Description: Neck fragment, closed vessel, very worn paint.

Catalogue number: CYP 90
Excavation number: TWE-A-01027-C-009
Level: 8CD-7BC
Description: Neck fragment, closed vessel.

Catalogue number: CYP 91
Excavation number: TWE-A-01022-C-008
Level: 7BC
Description: Body fragment and base of a vertical handle, closed vessel.

Catalogue number: CYP 92
Excavation number: TWE-A-02554-C-060
Level: 8A-7BC

Description: Vertical handle of a closed vessel (tankard?): one line on both sides of the handle, groups of three and two lines on the back.

Catalogue number: CYP 93

Excavation number: TWE-A-01026-C-030, 035

Level: 8AB-7

Description: Vertical handle, closed vessel (tankard?), very desurfaced.

Catalogue number: CYP 94

Excavation number: TWE-A-01026-C-033

Level: 8AB-7

Description: Onset of a vertical handle, closed vessel (tankard?).

Catalogue number: CYP 95

Excavation number: TWE-A-02607-C-009

Level: 8

Description: Vertical handle, closed vessel.

Catalogue number: CYP 96

Excavation number: TWE-A-02607-C-010

Level: 8

Description: Vertical handle, closed vessel, possible traces of a protruding lug.

Catalogue number: CYP 97

Excavation number: TWE-A-00190-C-003

Level: 8AB-7DE

Description: Vertical handle, one painted line.

Catalogue number: CYP 98

Excavation number: TWE-A-02607-C-005

Level: 8

Description: Body fragment and handle, closed vessel.

Catalogue number: CYP 99

Excavation number: TWE-A-00840-C-058

Level: 7BC

Description: Handle.

Catalogue number: CYP 100

Excavation number: TWE-A-02554-C-080

Level: 8A-7BC

Description: Vertical handle, one line in the middle of the back of the handle, following its shape.

Catalogue number: CYP 101

Excavation number: TWE-A-02607-C-007

Level: 8

Description: Vertical handle, closed vessel.

Catalogue number: CYP 102

Excavation number: TWE-A-01027-C-006

Level: 8CD-7BC

Description: Vertical handle, closed vessel, very worn dark paint.

Catalogue number: CYP 103

Excavation number: TWE-A-00230-C-011

Level: 8AB

Description: Body fragment, open vessel. Painted decoration: broad bands alternating with wavy lines on the inside, monochrome surface on the outside.

Catalogue number: CYP 104

Excavation number: TWE-A-00037-C-009, 013

Level: 7ABC

Description: Body fragment, open vessel, traces of a painted line.

Catalogue number: CYP 105

Excavation number: TWE-A-00840-C-094

Level: 7BC

Description: Body fragment, open vessel.

Catalogue number: CYP 106

Excavation number: TWE-A-00044-C-009

Level: 8AB

Description: Body fragment, closed vessel: two lines in dark paint.

Catalogue number: CYP 107

Excavation number: TWE-A-00158-C-004

Level: 8AB-7DE

Description: Body fragment, closed vessel.

Catalogue number: CYP 108

Excavation number: TWE-A-00840-C-068

Level: 7BC

Description: Body fragment, closed vessel.

Catalogue number: CYP 109

Excavation number: TWE-A-00840-C-091

Level: 7BC

Description: Body fragment, closed vessel.

Catalogue number: CYP 110
Excavation number: TWE-A-01026-C-042
Level: 8AB-7
Description: Body fragment, closed vessel.

Catalogue number: CYP 111
Excavation number: TWE-A-01064-C-038
Level: 8-7
Description: Body fragment, closed vessel: two vertical lines, zigzag line.

Catalogue number: CYP 112
Excavation number: TWE-A-01097-C-008
Level: 7DE-BC
Description: Body fragment of a closed vessel (possible CLS).

Catalogue number: CYP 113
Excavation number: TWE-A-01620-C-042
Level: 7BC
Description: Body fragment, closed vessel.

White Painted Wheel-made Ware

Catalogue number: CYP 114
Excavation number: TWE-A-01057-C-001
Level: 8AB
Description: Neck fragment, closed vessel.

Catalogue number: CYP 115
Excavation number: TWE-A-00855-C-031
Level: 7
Description: Body fragment, closed vessel.

Catalogue number: CYP 116
Excavation number: TWE-A-01089-C-006
Level: 7BC
Description: Body fragment, open vessel.

Catalogue number: CYP 117
Excavation number: TWE-A-04021-C-013
Level: 7-5
Description: Rim fragment, closed vessel.

Catalogue number: CYP 118
Excavation number: TWE-A-04021-C-006
Level: 7-5
Description: Handle, closed vessel.

Catalogue number: CYP 119
Excavation number: TWE-A-00851-C-037
Level: 7BC
Description: Body fragment, closed vessel, worn dark paint.

Catalogue number: CYP 120
Excavation number: TWE-A-00866-C-013
Level: 8-7DE
Description: Body fragment, closed vessel.

Catalogue number: CYP 121
Excavation number: TWE-A-04021-C-004
Level: 7-5
Description: Body fragment, closed vessel.

Red Slip Ware

Catalogue number: CYP 122
Excavation number: TWE-A-00982-C
Level: /
Description: Incomplete jug with a short concave neck, a globular body and a vertical handle from the upper neck to the shoulder. The mouth, the base and a part of the body are missing. Very worn surface, traces of dark red slip.

Red-on-Black Ware

Catalogue number: CYP 123 (Figs. 21, 79)
Excavation number: TWE-A-00190-C-006, 015
Level: 8AB-7DE
Description: Two joining rim fragments of a bowl, black mat slip, vertical red painted lines on the inside and groups of oblique lines on the outside.
References: Nys and Middernacht 2010, 124

Catalogue number: CYP 124 (Figs. 22a-b, 80)
Excavation number: TWE-A-00851-C-052
Level: 7BC
Description: Rim fragment and part of a horizontal handle, black slip, vertical red lines on the inside, below the rim. Horizontal lines on the superior part of the handle.

Catalogue number: CYP 125 (Fig. 23)
Excavation number: TWE-A-02607-C-027

Level: 8

Description: Rim fragment of a bowl, black slip, oblique parallel lines in red paint on the inside.

Catalogue number: CYP 126 (Figs. 24, 81)

Excavation number: TWE-A-01708-C-005

Level: (7BC-)6

Description: Rim fragment of a bowl, black slip, vertical red lines on the inside and on the outside.

Catalogue number: CYP 127

Excavation number: TWE-A-00611-C-029

Level: 7BC-6

Description: Rim fragment, open vessel.

Catalogue number: CYP 128

Excavation number: TWE-A-00828-C-017

Level: 7BC

Description: Rim fragment, open vessel.

Catalogue number: CYP 129

Excavation number: TWE-A-02554-C-084

Level: 8AB-7BC

Description: Rim fragment, open vessel.

Catalogue number: CYP 130

Excavation number: TWE-A-02607-C-023

Level: 8

Description: Transition neck-body fragment, open vessel.

Catalogue number: CYP 131 (Fig. 25)

Excavation number: TWE-A-01008-C-007

Level: 7BC

Description: Body fragment, open vessel, mis-fired: black surface, reddish-brown painted lines barely visible.

Catalogue number: CYP 132 (Fig. 26)

Excavation number: TWE-A-04217-C-001

Level: 7BC

Description: Body fragment, black slip, five vertical lines in red paint.

Catalogue number: CYP 133 (Fig. 27)

Excavation number: TWE-A-00829-C-004

Level: /

Description: Body fragment of a closed vessel, black slip, red parallel lines.

Composite Ware

Catalogue number: CYP 134 (Fig. 28)

Excavation number: TWE-A-02554-C-059

Level: 8AB-7BC

Description: Body fragment of a large bowl. Painted decoration: black slip and vertical red lines on the inside, light slip with horizontal black bands alternating with wavy lines on the outside.

References: Nys and Middernacht 2010, 124, fig. 2

Monochrome Ware

Catalogue number: CYP 135 (Figs. 29, 82)

Excavation number: TWE-A-01058-C-003, 008

Level: 8-7

Description: Two rim and body fragments of a bowl, a complete horizontal wishbone handle attached below the rim, red slip.

Catalogue number: CYP 136 (Fig. 30)

Excavation number: TWE-A-01019-C-033

Level: 7BC

Description: Rim and body fragment of a bowl, a complete horizontal wishbone handle attached below the rim, red slip.

Catalogue number: CYP 137

Excavation number: TWE-A-00855-C-038

Level: 7

Description: Rim fragment of a large deep bowl.

Catalogue number: CYP 138 (Fig. 31)

Excavation number: TWE-A-01064-C-011

Level: 8-7

Description: Rim and body fragment of a bowl, double carination, traces of red slip.

Catalogue number: CYP 139

Excavation number: TWE-A-00909-C-002

Level: 7BC

Description: Rim, body fragment and handle of a carinated bowl.

Catalogue number: CYP 140

Excavation number: TWE-A-01019-C-026

Level: 7BC

Description: Rim fragment and handle, open vessel.

Catalogue number: CYP 141**Excavation number:** TWE-A-00875-C-001**Level:** 8-7DE**Description:** Rim fragment, open vessel.**Catalogue number: CYP 142****Excavation number:** TWE-A-01024-C-031**Level:** 8AB-7BC**Description:** Rim fragment and handle, open vessel.**Catalogue number: CYP 143****Excavation number:** TWE-A-00848-C-112**Level:** 7BC**Description:** Rim fragment, open vessel.**Catalogue number: CYP 144****Excavation number:** TWE-A-00840-C-020**Level:** 7BC**Description:** Rim fragment and handle, open vessel.**Catalogue number: CYP 145****Excavation number:** TWE-A-00847-C-057**Level:** 7BC**Description:** Rim fragment, open vessel.**Catalogue number: CYP 146****Excavation number:** TWE-A-00847-C-046**Level:** 7BC**Description:** Rim fragment, open vessel.**Catalogue number: CYP 147****Excavation number:** TWE-A-00848-C-156**Level:** 7BC**Description:** Rim fragment and handle, open vessel.**Catalogue number: CYP 148****Excavation number:** TWE-A-00848-C-168**Level:** 7BC**Description:** Rim fragment and handle, open vessel.**Catalogue number: CYP 149****Excavation number:** TWE-A-00848-C-116**Level:** 7BC**Description:** Rim fragment, open vessel.**Catalogue number: CYP 150****Excavation number:** TWE-A-04200-C-015**Level:** 6 (7) or 6AB**Description:** Rim fragment, open vessel.**Catalogue number: CYP 151****Excavation number:** TWE-A-01027-C-045**Level:** 8CD-7BC**Description:** Rim fragment, open vessel.**Catalogue number: CYP 152****Excavation number:** TWE-A-01041-C-001**Level:** 8AB**Description:** Rim fragment, open vessel.**Catalogue number: CYP 153****Excavation number:** TWE-A-01010-C-019**Level:** 7BC**Description:** Rim fragment and handle, open vessel.**Catalogue number: CYP 154****Excavation number:** TWE-A-01025-C-032, 035**Level:** 7DE?**Description:** Two joining rim fragments, open vessel.**Catalogue number: CYP 155****Excavation number:** TWE-A-01010-C-019**Level:** 7BC**Description:** Rim fragment and handle, open vessel.**Catalogue number: CYP 156****Excavation number:** TWE-A-00855-C-037**Level:** 7**Description:** Neck and body fragment, deep bowl or crater?**Catalogue number: CYP 157****Excavation number:** TWE-A-01061-C-014**Level:** 8AB(-7DE)**Description:** Horizontal handle, open vessel.**Catalogue number: CYP 158****Excavation number:** TWE-A-01024-C-041**Level:** 8AB-7BC**Description:** Handle, open vessel.

Catalogue number: CYP 159**Excavation number:** TWE-A-00983-C-001**Level:** 7DE**Description:** Bowl fragment, hard, buff fabric, orange to red slip.**References:** Nys and Middernacht 2010, 125**Catalogue number: CYP 160****Excavation number:** TWE-A-00847-C-044**Level:** 7BC**Description:** Carinated body fragment, open vessel.**Catalogue number: CYP 161****Excavation number:** TWE-A-01061-C-004**Level:** 8AB(-7DE)**Description:** Body fragment, open vessel (crater)?**Catalogue number: CYP 162****Excavation number:** TWE-A-00855-C-044**Level:** 7**Description:** Body fragment, open vessel.**Catalogue number: CYP 163****Excavation number:** TWE-A-01027-C-047**Level:** 8CD-7BC**Description:** Body fragment, open vessel.**Catalogue number: CYP 164****Excavation number:** TWE-A-01024-C-033**Level:** 8AB-7BC**Description:** Carinated body fragment, open vessel.**Catalogue number: CYP 165****Excavation number:** TWE-A-01024-C-037**Level:** 8AB-7BC**Description:** Body fragment, open vessel.**Catalogue number: CYP 166****Excavation number:** TWE-A-01020-C-022**Level:** 7BC**Description:** Body fragment, open vessel.**Catalogue number: CYP 167****Excavation number:** TWE-A-01020-C-028**Level:** 7BC**Description:** Body fragment and part of handle, open vessel.**Catalogue number: CYP 168****Excavation number:** TWE-A-01019-C-012**Level:** 7BC**Description:** Body fragment, open vessel.**Catalogue number: CYP 169****Excavation number:** TWE-A-01019-C-011**Level:** 7BC**Description:** Body fragment, open vessel.**Catalogue number: CYP 170 (Fig. 32)****Excavation number:** TWE-A-01057-C-014**Level:** 8AB**Description:** Rim and body fragment of a carinated bowl, blackish colour on the upper part of the vessel, reddish slip on the lower part.**Catalogue number: CYP 171 (Fig. 33)****Excavation number:** TWE-A-00896-C-001**Level:** /**Description:** Rim and shoulder fragment of a carinated deep bowl (or crater?), black paint.**References:** Nys and Middernacht 2010, 125***Monochrome Ware (Levantine imitation?)*****Catalogue number: CYP 172 (Fig. 34)****Excavation number:** TWE-A-00838-C-007**Level:** 7BC**Description:** Rim fragment of a bowl with a horizontal triangular handle, reddish gritty clay, minor traces of what could be a reddish wash.***Bichrome Ware*****Catalogue number: CYP 173 (Fig. 83)****Excavation number:** TWE-A-01045-C-002**Level:** probably 7DE**Description:** Shoulder fragment of a closed vessel. Light slip, painted decoration: red and black geometric motifs.**References:** Vansteenhuyse 2008, 108, fig. 4:2

Catalogue number: CYP 174
Excavation number: TWE-A-04008
Level: 7BC
Description: Fragment of a vessel.
References: Vansteenhuyse 2008, 108

Catalogue number: CYP 175
Excavation number: TWE-A-00968
Level: 9-7DE (pit)
Description: Fragment of a vessel.
References: Vansteenhuyse 2008, 108

Base-Ring I Ware

Catalogue number: CYP 176 (Fig. 35)
Excavation number: TWE-A-00840-C-008
Level: 7BC
Description: Rim fragment of a bowl, complete wishbone handle with a pinched end.

Catalogue number: CYP 177
Excavation number: TWE-A-00848-C-155
Level: 7BC
Description: Rim fragment of a bowl.

Catalogue number: CYP 178
Excavation number: TWE-A-00848-C-164
Level: 7BC
Description: Rim fragment of a bowl.

Catalogue number: CYP 179
Excavation number: TWE-A-00917-C-023
Level: 7DE
Description: Rim fragment of a bowl.

Catalogue number: CYP 180
Excavation number: TWE-A-01620-C-038
Level: 7BC
Description: Rim fragment of a bowl.

Catalogue number: CYP 181
Excavation number: TWE-A-02554-C-110
Level: 8AB-7BC
Description: Rim fragment of a bowl.

Catalogue number: CYP 182
Excavation number: TWE-A-02609-C-019
Level: 8AB
Description: Rim fragment of a bowl.

Catalogue number: CYP 183
Excavation number: TWE-A-00851-C-053
Level: 7BC
Description: Rim fragment.

Catalogue number: CYP 184 (Fig. 36)
Excavation number: TWE-A-00967-C-001
Level: 7BC
Description: Lower part of a jug, mended from ca. 40 pieces. The neck, the handle and parts of the body are missing. Ovoid body, ring base, "red" (10R5/8) to "dusky red" (10R3/3) slip. Two anti-thetic arcs in relief in front of the body.

Catalogue number: CYP 185
Excavation number: TWE-A-00222-C-017-018-019-020-021-022-023-024-026-028
Level: 7-6
Description: Ten body fragments of a jug, a flat handle incised with two vertical lines.

Catalogue number: CYP 186 (Fig. 37)
Excavation number: TWE-A-00983-C-002
Level: 7DE
Description: Almost complete BR I juglet with a missing mouth. Conical neck, ovoid body, ring base, vertical strap handle from neck to shoulder. Two horizontal ridges on the neck, at the handle attachment. Red burnished slip.

Catalogue number: CYP 187 (Fig. 84)
Excavation number: TWE-A-00967-C-002
Level: 7BC
Description: Almost complete juglet, with missing mouth and handle. Conical neck, ovoid body, ring base. Two horizontal ridges on the neck, at the handle attachment, and two vertical lines in relief on the body, opposite the handle.

Catalogue number: CYP 188 (Fig. 85)
Excavation number: TWE-A-00848-C-166
Level: 7BC
Description: Superior part of a juglet with a funnel mouth and a conical neck. Two horizontal ridges on the neck, at the handle attachment.
References: Vansteenhuyse 2008, 108, fig. 5:5; Vansteenhuyse 2010, ill. 4.5

Catalogue number: CYP 189 (Fig. 38)
Excavation number: TWE-A-00848-C-169

Level: 7BC

Description: Superior part of a juglet with a funnel mouth, a conical neck and the departure of a broken handle. Dark brown slip, two horizontal ridges on the neck, at the handle attachment.

Catalogue number: CYP 190

Excavation number: TWE-A-00848-C-167

Level: 7BC

Description: Spout and part of the neck of a juglet.

Catalogue number: CYP 191

Excavation number: TWE-A-01020-C-016

Level: 7BC

Description: Part of the neck of a juglet, incised lines at the height of the handle.

Catalogue number: CYP 192

Excavation number: TWE-A-00915-C-033

Level: 7BC

Description: Neck and shoulder fragment of a closed vessel, a ridge in relief at the transition from neck to shoulder.

Catalogue number: CYP 193

Excavation number: TWE-A-00838-C-044

Level: 7BC

Description: Neck fragment of a juglet, a horizontal ridge.

Catalogue number: CYP 194

Excavation number: TWE-A-00114-C-024

Level: 6AB

Description: Pierced handle with a knob.

Catalogue number: CYP 195

Excavation number: TWE-A-00527-C-003, 009

Level: 6AB

Description: Handle and shoulder fragment of a closed vessel, two bands in relief on the shoulder.

Catalogue number: CYP 196 (Figs. 39, 86)

Excavation number: TWE-A-01061-C-002

Level: 8AB(-7DE)

Description: One complete and one broken segment of the wishbone handle of a bowl.

Catalogue number: CYP 197

Excavation number: TWE-A-00858-C-035

Level: 7

Description: Handle fragment, closed vessel.

Catalogue number: CYP 198

Excavation number: TWE-A-00861-C-002

Level: 8CD-7

Description: Handle, closed vessel.

Catalogue number: CYP 199

Excavation number: TWE-A-00862-C-016

Level: 8AB

Description: Handle, closed vessel.

Catalogue number: CYP 200 (Fig. 40)

Excavation number: TWE-A-00858-C-011

Level: 7

Description: Body fragment and handle of a juglet, worn black slip, joins possibly TWE-A-00858-C-021 ("CYP 211").

Catalogue number: CYP 201

Excavation number: TWE-A-01068-C-004

Level: 8

Description: Body fragment and part of a handle, closed vessel.

Catalogue number: CYP 202

Excavation number: TWE-A-01202-C-019

Level: 7BC

Description: Handle, closed vessel.

Catalogue number: CYP 203

Excavation number: TWE-A-05558-C-006

Level: 7-5

Description: Vertical handle with two vertical grooves, worn slip, closed vessel.

Catalogue number: CYP 204

Excavation number: TWE-A-01021-C-034

Level: 7BC

Description: Vertical handle with two vertical grooves, closed vessel.

Catalogue number: CYP 205 (Fig. 41a)

Excavation number: TWE-A-01023-C-066

Level: 7BC

Description: Fragment of the handle of a jug with two vertical incisions.

References: Vansteenhuyse 2008, 109

Catalogue number: CYP 206 (Fig. 41b)

Excavation number: TWE-A-01023-C-072

Level: 7BC

Description: Neck fragment of a juglet, two horizontal ridges.

References: Vansteenhuyse 2008, 109

Catalogue number: CYP 207 (Figs. 42, 87)

Excavation number: TWE-A-01041-C-006

Level: 8AB

Description: Neck fragment of a juglet, very black slip, two horizontal ridges at the handle attachment.

Catalogue number: CYP 208 (Fig. 41c)

Excavation number: TWE-A-01023-C-080

Level: 7BC

Description: Ring-base of a juglet.

Catalogue number: CYP 209

Excavation number: TWE-A-00945-014

Level: 7DE

Description: Body fragment of a jug or a juglet, one line in relief.

Catalogue number: CYP 210

Excavation number: TWE-A-01024-C-030

Level: 8AB-7BC

Description: Body fragment with a vertical ridge, closed vessel.

Catalogue number: CYP 211

Excavation number: TWE-A-00858-C-021

Level: 7

Description: Body fragment of a juglet, worn black slip, joins possibly TWE-A-00858-C-011.

Catalogue number: CYP 212

Excavation number: TWE-A-00909-C-003

Level: 7BC

Description: Body fragment.

Catalogue number: CYP 213

Excavation number: TWE-A-00915-C-022

Level: 7BC

Description: Body fragment, closed vessel.

Catalogue number: CYP 214

Excavation number: TWE-A-01077-C-010

Level: 8-7

Description: Body fragment, closed vessel.

Base-Ring II Ware

Catalogue number: CYP 215 (Fig. 43)

Excavation number: TWE-A-07310-C-003

Level: 7BC

Description: Right leg of a bull-shaped vase, worn reddish slip.

Catalogue number: CYP 216 (Fig. 44)

Excavation number: TWE-A-01061-C-013

Level: 8AB(-7DE)

Description: Right leg of a bull-shaped vase, black slip, traces of white paint.

References: Nys and Middernacht 2010, 123

Catalogue number: CYP 217 (Fig. 45)

Excavation number: TWE-A-06048-C-004

Level: /

Description: Rim and shoulder fragment of a bowl, partial handle.

Catalogue number: CYP 218

Excavation number: TWE-A-00195-C-002

Level: 8AB-7DE

Description: Rim fragment, open vessel.

Catalogue number: CYP 219

Excavation number: TWE-A-00838-C-042

Level: 7BC

Description: Rim fragment, open vessel.

Catalogue number: CYP 220

Excavation number: TWE-A-00902-C-029

Level: 6

Description: Rim fragment, open vessel.
Diam: 12 cm

Catalogue number: CYP 221

Excavation number: TWE-A-00848-C-027

Level: 7BC

Description: Rim fragment and handle, open vessel.

Catalogue number: CYP 222

Excavation number: TWE-A-00848-C-144

Level: 7BC

Description: Rim fragment and handle, open vessel.

Catalogue number: CYP 223

Excavation number: TWE-A-00848-C-151

Level: 7BC

Description: Rim fragment and handle, open vessel.

Catalogue number: CYP 224

Excavation number: TWE-A-00840-C-0131

Level: 7BC

Description: Rim fragment, closed vessel, white painted decoration.

Catalogue number: CYP 225

Excavation number: TWE-A-00909-C-007

Level: 7BC

Description: Rim fragment, closed vessel.

Catalogue number: CYP 226

Excavation number: TWE-A-00909-C-008

Level: 7BC

Description: Rim fragment, open vessel.

Catalogue number: CYP 227

Excavation number: TWE-A-01092-C-005

Level: 7BC

Description: Rim fragment, closed vessel.

Catalogue number: CYP 228

Excavation number: TWE-A-01097-C-002

Level: 7DE-BC

Description: Rim and neck fragment, closed vessel, traces of white paint on the neck.

Catalogue number: CYP 229

Excavation number: TWE-A-01097-C-007

Level: 7DE-BC

Description: Rim and neck fragment, closed vessel, white paint on the neck.

Catalogue number: CYP 230

Excavation number: TWE-A-01097-C-015

Level: 7DE-BC

Description: Rim fragment, closed vessel, one white line on the neck, below the rim.

Catalogue number: CYP 231

Excavation number: TWE-A-01015-C-011

Level: 5A

Description: Rim fragment, bowl.

Catalogue number: CYP 232 (Fig. 88)

Excavation number: TWE-A-03303-C-029

Level: 6A

Description: Mouth of a jug with an everted rim. Black slip, two horizontal parallel lines in white paint.

References: Vansteenhuyse 2008, 109, fig. 5:6; Vansteenhuyse 2010, ill. 4.6

Catalogue number: CYP 233 (Fig. 46)

Excavation number: TWE-A-03349-C-006

Level: 7DE

Description: Rim and body fragment with the departure of a handle, desurfaced on the outside.

Catalogue number: CYP 234

Excavation number: TWE-A-00333-C-022

Level: 7BC-6

Description: Rim and neck fragment, closed vessel.

Catalogue number: CYP 235

Excavation number: TWE-A-00903-C-021

Level: 6CD

Description: Rim fragment, closed vessel.

Catalogue number: CYP 236

Excavation number: TWE-A-00855-C-095

Level: 7

Description: Rim fragment and handle, open vessel.

Catalogue number: CYP 237 (Fig. 89)

Excavation number: TWE-A-00855-C-024

Level: 7

Description: Rim fragment and shoulder of a bowl, beginning of a horizontal handle.

Catalogue number: CYP 238

Excavation number: TWE-A-01011-C-013

Level: 7BC

Description: Spout of a closed vessel, traces of white paint.

Catalogue number: CYP 239

Excavation number: TWE-A-00852-C-014

Level: 7DE

Description: Neck and body fragment, closed vessel.

Catalogue number: CYP 240
Excavation number: TWE-A-01061-C-017
Level: 8AB(-7DE)
Description: Neck fragment, open vessel.

Catalogue number: CYP 241 (Fig. 41d)
Excavation number: TWE-A-01023-C-055
Level: 7BC
Description: Neck fragment of a jug, groups of three and two horizontal lines in white paint.

Catalogue number: CYP 242
Excavation number: TWE-A-01015-C-014
Level: 5A
Description: Neck fragment, closed vessel, horizontal lines painted in white.

Catalogue number: CYP 243 (Fig. 47)
Excavation number: TWE-A-01019-C-030
Level: 7BC
Description: Base fragment of a large jug.

Catalogue number: CYP 244
Excavation number: TWE-A-00638-C-004
Level: 7BC
Description: Base fragment, closed vessel.

Catalogue number: CYP 245
Excavation number: TWE-A-01098-C-003
Level: 7
Description: Base fragment, small vessel.

Catalogue number: CYP 246
Excavation number: TWE-A-00517-C-006
Level: 7BC
Description: Fragment of a ring base, closed vessel.

Catalogue number: CYP 247
Excavation number: TWE-A-00915-C-018
Level: 7BC
Description: Base fragment, closed vessel.
 Diam.: 5 cm.

Catalogue number: CYP 248
Excavation number: TWE-A-00855-C-092
Level: 7
Description: Base fragment, open vessel.

Catalogue number: CYP 249
Excavation number: TWE-A-00861-C-005
Level: 8CD-7
Description: Base fragment of a large jug.

Catalogue number: CYP 250 (Fig. 48)
Excavation number: TWE-A-01025-C-030
Level: 7DE?
Description: Base fragment and beginning of the body of a bowl, reddish slip.

Catalogue number: CYP 251 (Fig. 49a)
Excavation number: TWE-A-01021-C-035
Level: 7BC
Description: Base fragment of a jug, traces of white paint.

Catalogue number: CYP 252
Excavation number: TWE-A-06010-C-015
Level: 7-4 (very mixed)
Description: Base fragment, closed vessel.

Catalogue number: CYP 253
Excavation number: TWE-07190-C-002
Level: 7BC
Description: Base-ring of a large jug, white encircling band painted on the transition to the body.

Catalogue number: CYP 254
Excavation number: TWE-A-00903-C-048
Level: 6CD
Description: Handle, open vessel.

Catalogue number: CYP 255
Excavation number: TWE-A-01015-C-012
Level: 5AB
Description: Handle.

Catalogue number: CYP 256
Excavation number: TWE-A-00866-C-023
Level: 8-7DE
Description: Body fragment and part of a handle, open vessel.

Catalogue number: CYP 257
Excavation number: TWE-A-00875-C-006
Level: 8-7DE
Description: Body fragment and part of handle, closed vessel.

Catalogue number: CYP 258**Excavation number:** TWE-A-01015-C-015**Level:** 5AB**Description:** Body fragment and handle, closed vessel.**Catalogue number: CYP 259****Excavation number:** TWE-A-00855-C-059**Level:** 7**Description:** Fragment of a closed vessel, dark grey outer cores and brick red inner core. Light grey slip and bright white painted decoration: two parallel lines.**Catalogue number: CYP 260****Excavation number:** TWE-A-00156-C-027**Level:** 7BC**Description:** Body fragment, open vessel.**Catalogue number: CYP 261****Excavation number:** TWE-A-00158-C-023**Level:** 8AB-7DE**Description:** Body fragment, juglet.**Catalogue number: CYP 262****Excavation number:** TWE-A-00538-C-006**Level:** 7BC**Description:** Body fragment (part of neck?), closed vessel.**Catalogue number: CYP 263****Excavation number:** TWE-A-00840-C-013**Level:** 7BC**Description:** Body fragment, closed vessel, white painted decoration.**Catalogue number: CYP 264****Excavation number:** TWE-A-00840-C-070**Level:** 7BC**Description:** Body fragment, closed vessel, white painted decoration.**Catalogue number: CYP 265****Excavation number:** TWE-A-00840-C-075**Level:** 7BC**Description:** Body fragment, closed vessel, white painted decoration.**Catalogue number: CYP 266****Excavation number:** TWE-A-00847-C-038**Level:** 7BC**Description:** Body fragment, slightly lustrous black slip, faint traces of at least three parallel lines.**Catalogue number: CYP 267****Excavation number:** TWE-A-00848-C-052**Level:** 7BC**Description:** Body fragment, black slip, traces of white paint.**Catalogue number: CYP 268****Excavation number:** TWE-A-00848-C-153**Level:** 7BC**Description:** Body fragment.**Catalogue number: CYP 269****Excavation number:** TWE-A-00848-C-170**Level:** 7BC**Description:** Body fragment.**Catalogue number: CYP 270****Excavation number:** TWE-A-00874-C-005**Level:** 7BC**Description:** Body fragment with traces of white paint.**Catalogue number: CYP 271****Excavation number:** TWE-A-00874-C-028**Level:** 7BC**Description:** Body fragment, open vessel.**Catalogue number: CYP 272****Excavation number:** TWE-A-00874-C-030**Level:** 7BC**Description:** Body fragment, open vessel.**Catalogue number: CYP 273****Excavation number:** TWE-A-00874-C-044**Level:** 7BC**Description:** Body fragment, open vessel.**Catalogue number: CYP 274****Excavation number:** TWE-A-00951-C-011**Level:** 7(DE)**Description:** Body fragment, closed vessel.**Catalogue number: CYP 275****Excavation number:** TWE-A-00847-C-028**Level:** 7BC

Description: Body fragment, open vessel.

Catalogue number: CYP 276

Excavation number: TWE-A-00847-C-030

Level: 7BC

Description: Body fragment, open vessel.

Catalogue number: CYP 277

Excavation number: TWE-A-00855-C-052

Level: 7

Description: Body fragment and part of handle, closed vessel.

Catalogue number: CYP 278

Excavation number: TWE-A-00855-C-060

Level: 7

Description: Body fragment, closed vessel.

Catalogue number: CYP 279

Excavation number: TWE-A-00866-C-022

Level: 8-7DE

Description: Body fragment, closed vessel.

Base-Ring Uncoated Ware

Catalogue number: CYP 280

Excavation number: TWE-A-04021-C-002

Level: 7-5

Description: Body fragment and handle, open vessel, possible traces of a white paint.

Catalogue number: CYP 281

Excavation number: TWE-A-00909-C-006

Level: 7BC

Description: Handle of a bowl.

Catalogue number: CYP 282

Excavation number: TWE-A-01620-C-036

Level: 7BC

Description: Body fragment.

Base-Ring Ware

Catalogue number: CYP 283

Excavation number: TWE-A-00840-C-082

Level: 7BC

Description: Rim fragment, open vessel.

Catalogue number: CYP 284

Excavation number: TWE-A-00840-C-083

Level: 7BC

Description: Rim fragment, open vessel.

Catalogue number: CYP 285

Excavation number: TWE-A-04021-C-005

Level: 7-5

Description: Spout, neck and part of handle, closed vessel.

Catalogue number: CYP 286

Excavation number: TWE-A-00145-C-030

Level: 7BC-6CD

Description: Rim fragment of a jug.

Catalogue number: CYP 287

Excavation number: TWE-A-00145-C-032

Level: 7BC-6CD

Description: Rim fragment of a jug.

Catalogue number: CYP 288

Excavation number: TWE-A-00048-C-014

Level: /

Description: Neck and shoulder fragment, closed vessel.

Catalogue number: CYP 289

Excavation number: TWE-A-00180-C-003

Level: 7BC

Description: Neck fragment, closed vessel.

Catalogue number: CYP 290

Excavation number: TWE-A-00842-C-016

Level: 7BC

Description: Base fragment.

Catalogue number: CYP 291

Excavation number: TWE-A-02605-C-023

Level: 7BC

Description: Base fragment.

Catalogue number: CYP 292

Excavation number: TWE-A-00840-C-137

Level: 7BC

Description: Base fragment, open vessel.

Catalogue number: CYP 293

Excavation number: TWE-A-00840-C-163

Level: 7BC

Description: Base fragment, open vessel.

Catalogue number: CYP 294

Excavation number: TWE-A-00858-C-031

Level: 7

Description: Body fragment, closed vessel.

Catalogue number: CYP 295

Excavation number: TWE-A-00858-C-037

Level: 7

Description: Body and handle fragment, open vessel.

Catalogue number: CYP 296

Excavation number: TWE-A-00866-C-007

Level: 8-7DE

Description: Base fragment, closed vessel.

Catalogue number: CYP 297

Excavation number: TWE-A-01026-C-001

Level: 8AB-7

Description: Handle, open vessel.

Catalogue number: CYP 298

Excavation number: TWE-A-00638-C-037

Level: 7BC

Description: Handle.

Catalogue number: CYP 299

Excavation number: TWE-A-00830-C-028

Level: 7BC

Description: Handle, open vessel.

Catalogue number: CYP 300

Excavation number: TWE-A-00858-C-006

Level: 7

Description: Handle and body fragment, open vessel.

Catalogue number: CYP 301

Excavation number: TWE-A-00866-C-006

Level: 8-7DE

Description: Body fragment and handle, closed vessel.

Catalogue number: CYP 302

Excavation number: TWE-A-01022-C-013

Level: 7BC

Description: Neck fragment and part of handle, closed vessel, two bands in relief.

Catalogue number: CYP 303

Excavation number: TWE-A-01024-C-039

Level: 8AB-7BC

Description: Body fragment.

Catalogue number: CYP 304

Excavation number: TWE-A-01024-C-038

Level: 8AB-7BC

Description: Body fragment.

Catalogue number: CYP 305

Excavation number: TWE-A-01024-C-036

Level: 8AB-7BC

Description: Body fragment, closed vessel, relief decoration.

Catalogue number: CYP 306

Excavation number: TWE-A-01620-C-037

Level: 7BC

Description: Body fragment.

Catalogue number: CYP 307

Excavation number: TWE-A-02554-C-073

Level: 8AB-7BC

Description: Body fragment, closed vessel, very dark slip.

Catalogue number: CYP 308

Excavation number: TWE-A-06212-C-013

Level: 7BC-6AB

Description: Body fragment, closed vessel.

Red Lustrous Wheel-made Ware

Catalogue number: CYP 309

Excavation number: TWE-A-00611-C-040

Level: 7BC-6

Description: Rim fragment of a plate, open vessel.

Catalogue number: CYP 310

Excavation number: TWE-A-01077-C-001

Level: 8-7

Description: Rim and neck fragment of a spindle bottle.

References: Vansteenhuyse 2008, 110

Catalogue number: CYP 311 (Fig. 50)

Excavation number: TWE-A-00847-C-012

Level: 7BC

Description: Neck fragment of a spindle bottle, red slip vertically burnished.

References: Vansteenhuyse 2008, 109; Vansteenhuyse 2010, 100

Catalogue number: CYP 312

Excavation number: TWE-A-00938-C-032

Level: 8CD

Description: Transition neck-body fragment, closed vessel.

Catalogue number: CYP 313 (Fig. 49b)

Excavation number: TWE-A-01021-C-037

Level: 7BC

Description: Base fragment, spindle bottle.

Catalogue number: CYP 314

Excavation number: TWE-A-00909-C-059

Level: 7BC

Description: Handle, closed vessel.

Catalogue number: CYP 315

Excavation number: TWE-A-01059-C-002

Level: 8AB-7DE

Description: Body fragment, spindle bottle.

References: Vansteenhuyse 2008, 110

Catalogue number: CYP 316

Excavation number: TWE-A-00181

Level: 7BC

Description: Body fragment, closed vessel.

References: Vansteenhuyse 2008, 110

Catalogue number: CYP 317

Excavation number: TWE-A-01924

Level: 6CD

Description: Body fragment, closed vessel.

References: Vansteenhuyse 2008, 110

Catalogue number: CYP 318

Excavation number: TWE-A-01055

Level: 8AB

Description: Body fragment, closed vessel.

References: Vansteenhuyse 2008, 110

Black Lustrous Wheel-made Ware (?)

Catalogue number: CYP 319

Excavation number: TWE-A-00847-C-011

Level: 7BC

Description: Rim fragment of a closed vessel.

White Lustrous Wheel-made Ware

Catalogue number: CYP 320 (Fig. 51)

Excavation number: TWE-A-01020-C-030

Level: 7BC

Description: Rim fragment of a jug or a bottle, white slip carefully burnished.

References: Nys and Middernacht 2010, 125

White Shaved Ware

Catalogue number: CYP 321

Excavation number: TWE-A-00870-C-116

Level: 8CD-7

Description: Rim fragment and handle, dipper juglet.

Catalogue number: CYP 322

Excavation number: TWE-A-01011-C-012

Level: 7BC

Description: Rim fragment and part of vertical handle, dipper juglet.

Catalogue number: CYP 323

Excavation number: TWE-A-00847-C-037

Level: 7BC

Description: Rim fragment with onset of handle, dipper juglet.

Catalogue number: CYP 324

Excavation number: TWE-A-00848-C-051

Level: 7BC

Description: Rim fragment, dipper juglet.

Catalogue number: CYP 325

Excavation number: TWE-A-05996

Level: 7BC

Description: Upper part of a dipper juglet, onset of a vertical handle.

Catalogue number: CYP 326
Excavation number: TWE-A-00855-C-091
Level: 7
Description: Part of vertical handle, dipper juglet.

Catalogue number: CYP 327
Excavation number: TWE-A-01923-C-043
Level: 7BC
Description: Body fragment and part of vertical handle, dipper juglet.

Catalogue number: CYP 328
Excavation number: TWE-A-00830-C-040
Level: 7BC
Description: Body fragment, dipper juglet.

Catalogue number: CYP 329
Excavation number: TWE-A-00830-C-046
Level: 7BC
Description: Body fragment, dipper juglet.

Catalogue number: CYP 330
Excavation number: TWE-A-00848-C-028
Level: 7BC
Description: Body fragment, dipper juglet.

Catalogue number: CYP 331
Excavation number: TWE-A-01025-C-039
Level: 7DE
Description: Body fragment and part of vertical handle, dipper juglet.

Catalogue number: CYP 332
Excavation number: TWE-A-00840-C-138
Level: 7BC
Description: Body fragment, dipper juglet.

Catalogue number: CYP 333
Excavation number: TWE-A-00840-C-047
Level: 7BC
Description: Body fragment and part of vertical handle, dipper juglet.

Catalogue number: CYP 334
Excavation number: TWE-A-01620-C-024
Level: 7BC
Description: Body fragment, dipper juglet.

Catalogue number: CYP 335
Excavation number: TWE-A-00851-C-050

Level: 7BC
Description: Body fragment, dipper juglet.

Catalogue number: CYP 336
Excavation number: TWE-A-00830-C-049
Level: 7BC
Description: Body fragment, dipper juglet.

Catalogue number: CYP 337
Excavation number: TWE-A-01020-C-019, C-020, C-026, C-031
Level: 7BC
Description: Body fragments, handle and base fragment of the same vessel, dipper juglet.

Plain White Wheel-made Ware

Catalogue number: CYP 338 (Fig. 52)
Excavation number: TWE-A-00917-C-018
Level: 7BC
Description: Rim fragment, closed vessel, very visible wheelmarks on the outside. Diam.: 14 cm.

Catalogue number: CYP 339
Excavation number: TWE-A-00866-C-024
Level: 8-7DE
Description: Flat base, open vessel.

Catalogue number: CYP 340
Excavation number: TWE-A-01620-C-032
Level: 7BC
Description: Shoulder and body fragment, closed vessel, sharp carination.

Catalogue number: CYP 341
Excavation number: TWE-A-06212-C-021
Level: 7BC-6AB
Description: Standing and base, closed vessel.

Catalogue number: CYP 342 (Fig. 53)
Excavation number: TWE-A-00185-C-025
Level: 7BC
Description: Almost complete jug, mouth and part of body, including base, missing. Conical neck, globular body, vertical handle from rim to shoulder.

Catalogue number: CYP 343
Excavation number: TWE-A-01620-C-022

Level: 7BC

Description: Rim and neck fragment, closed vessel.

Catalogue number: CYP 344

Excavation number: TWE-A-02607-C-026

Level: 8

Description: Rim fragment (juglet?).

Catalogue number: CYP 345

Excavation number: TWE-A-02554-C-081

Level: 8A-7BC

Description: Rim fragment.

Catalogue number: CYP 346

Excavation number: TWE-A-00852-C-016

Level: 7DE

Description: Rim fragment and handle.

Catalogue number: CYP 347

Excavation number: TWE-A-00001-C-017

Level: Topsoil

Description: Rim fragment, open vessel.

Diam: 12 cm.

Catalogue number: CYP 348

Excavation number: TWE-A-00043-C-029

Level: 7BC

Description: Rim fragment, plate.

Catalogue number: CYP 349

Excavation number: TWE-A-00860-C-005

Level: 7DE

Description: Rim fragment and vertical handle, closed shape.

Catalogue number: CYP 350

Excavation number: TWE-A-01027-C-017

Level: 8CD-7BC

Description: Neck fragment, closed vessel.

Catalogue number: CYP 351

Excavation number: TWE-A-01305-C-003

Level: /

Description: Base fragment, jug.

Catalogue number: CYP 352

Excavation number: TWE-A-00044-C-006

Level: 8AB

Description: Body fragment, small closed vessel.

Catalogue number: CYP 353

Excavation number: TWE-A-00856-C-014

Level: 8AB

Description: Body fragment.

Catalogue number: CYP 354

Excavation number: TWE-A-00855-C-058

Level: 7

Description: Body fragment, closed vessel.

Catalogue number: CYP 355

Excavation number: TWE-A-01027-C-011

Level: 8CD-7BC

Description: Body fragment, closed vessel.

Catalogue number: CYP 356

Excavation number: TWE-A-02605-C-004

Level: 7BC

Description: Body fragment, open vessel? Two parallel horizontal ridges with slant grooves on top.

Pithoi

Catalogue number: CYP 357 (Fig. 54)

Excavation number: TWE-A-00156-C-007

Level: 7BC

Description: Shoulder fragment, three horizontal grooves below which is an incised wavy line.

References: Vansteenhuyse 2008, 110

Catalogue number: CYP 358 (Fig. 90)

Excavation number: TWE-A-00840-C-023

Level: 7BC

Description: Shoulder fragment, a horizontal wavy line in relief.

References: Vansteenhuyse 2008, 110

White Slip I Ware

Catalogue number: CYP 359 (Fig. 55)

Excavation number: TWE-A-00250-C-004

Level: 8-7BC

Description: Rim fragment of a bowl, white slip, black painted decoration: a wavy line and a horizontal “Rope Pattern” under the rim.

Catalogue number: CYP 360 (Figs. 57a, 91)

Excavation number: TWE-A-00860-C-003

Level: 7DE

Description: Rim fragment of a bowl, red fabric, white slip, bichrome decoration: one red wavy line under the rim, below which are two parallel black lines and the beginning of a “Horned Frontal Motif” in dark reddish-brown paint.

References: Vansteenhuyse 2008, 107, fig. 4:1; Vansteenhuyse 2010, ill. 4.7

Catalogue number: CYP 361 (Figs. 57b, 92)

Excavation number: TWE-A-00968-C-167

Level: 9-7DE (pit)

Description: Rim and body fragments of the same bowl, white slip, reddish-brown paint: two horizontal lines under the rim, below which is one vertical band with lattices.

Catalogue number: CYP 362 (Fig. 57c)

Excavation number: TWE-A-00945-C-007

Level: 7DE

Description: Body fragment of a bowl (just under the rim), two horizontal lines, one vertical ladder.

Catalogue number: CYP 363 (Figs. 57d, 93)

Excavation number: TWE-A-01043-C-008

Level: 8AB-7DE

Description: Body fragment of a bowl, very white slip, red painted decoration: a vertical band with lattices.

References: Vansteenhuyse 2008, 107

Catalogue number: CYP 364 (Fig. 57d)

Excavation number: TWE-A-00969-C-033

Level: 9 (disturbed by a pit?)

Description: Wishbone handle of a bowl, white slip, black painted decoration: two groups of four parallel lines with four dots between them on each segment of the handle, four other lines on the top, one line following the shape of the handle.

Catalogue number: CYP 365 (Fig. 94)

Excavation number: TWE-A-01051-C-004

Level: probably 6

Description: Body fragment of a bowl painted with a “Horned Frontal” motif: two vertical wavy lines framed by dots.

References: Vansteenhuyse 2008, 107

Catalogue number: CYP 366 (Fig. 56)

Excavation number: TWE-A-01027-C-031

Level: 8CD-7BC

Description: Body fragment of a bowl (just under the rim), white slip, painted decoration: pairs of horizontal black lines alternating with a wavy line in red paint.

References: Vansteenhuyse 2008, 107

Catalogue number: CYP 367

Excavation number: TWE-A-00951-C-012

Level: 7(DE)?

Description: Body fragment of a bowl, bichrome painted decoration: long brown lines with red dots between them (“Horned Frontal Motif”).

White Slip II Ware

Catalogue number: CYP 368 (Fig. 95)

Excavation number: TWE-A-00847-C-039 together with 062, 021 (two joining fragments) and 052, 059, 042, 043, 041 (five joining fragments)

Level: 7BC

Description: Hemispherical bowl, four rim fragments (039, 041, 042, 052) and three body fragments (021, 043, 059, 062). Painted decoration: a horizontal “Ladder Lattice” band under the rim, below which are a vertical ladder and a dotted line.

Catalogue number: CYP 369 (Fig. 96)

Excavation number: TWE-A-00968-C-177

Level: 9-7DE (pit)

Description: Body fragment with the onset of a broken handle, “Ladder Lattice” pattern.

Catalogue number: CYP 370 (Figs. 58, 97)

Excavation number: TWE-A-01020-C-012

Level: 7BC

Description: Rim fragment of a bowl with the attach of a broken handle. White slip, dark brown paint, dotted rim. Decoration in the “Dotted Row

Style”: a horizontal dotted line framed by two “Ladder Lattice” bands, beginning of a vertical “Ladder Lattice Pattern” under the handle.

References: Vansteenhuyse 2008, 110

Catalogue number: CYP 371

Excavation number: TWE-A-01202-C-015

Level: 7BC

Description: Rim fragment of a bowl. Painted decoration: a hooked chain between two lattice bands (“Hooked Chain Style”).

Catalogue number: CYP 372a, b, c (Figs. 98, 99)

Excavation number: TWE-A-00838-C-035, 036, 049

Description: Two rim fragments and one body fragment of a bowl, whitish slip, brown paint: a horizontal “Ladder Lattice” band under the rim, below which are a vertical ladder and a vertical dotted line.

References: Vansteenhuyse 2008, 110

Catalogue number: CYP 373 (Figs. 68c, 100)

Excavation number: TWE-A-00838-C-047

Level: 7BC

Description: Rim fragment of a bowl, worn buff slip and worn brown paint, a horizontal “Ladder Lattice” below which is a vertical “Ladder Lattice” motif.

References: Vansteenhuyse 2008, 110

Catalogue number: CYP 374

Excavation number: TWE-A-00838-C-058

Level: 7BC

Description: Rim fragment of a bowl, worn light buff slip, “Ladder Lattice” pattern in brown paint.

Catalogue number: CYP 375 (Fig. 59)

Excavation number: TWE-A-00858-C-034

Level: 7BC

Description: Rim fragment of a bowl, light slip, dotted rim, beginning of a “Ladder Lattice” pattern: thicker and darker outer lines, lighter and thinner inner lines.

References: Vansteenhuyse 2008, 107

Catalogue number: CYP 376 (Fig. 101)

Excavation number: TWE-A-03411-C-006

Level: 7BC

Description: Rim fragment of a bowl, one horizontal “Ladder Lattice” pattern below the rim.

Catalogue number: CYP 377

Excavation number: TWE-A-00847-C-047 possibly with TWE-A-00847-C-036

Level: 7BC

Description: Rim fragment, handle and body fragment of a bowl.

Catalogue number: CYP 378

Excavation number: TWE-A-00847-C-023

Level: 7BC

Description: Large piece of rim, open vessel.

Catalogue number: CYP 379 (Figs. 60, 102)

Excavation number: TWE-A-00848-C-020 joins with TWE-A-00848-C-047 & 034

Level: 7BC

Description: Rim fragment and two body fragments of a bowl, buff slip. Brown painted decoration: “Ladder Lattice” pattern under the rim, below which are a vertical ladder and two dotted lines.

Catalogue number: CYP 380

Excavation number: TWE-A-00909-C-005

Level: 7BC

Description: Rim fragment of a bowl. Dotted rim, painted decoration in the “Dotted Row Style”: a dotted line framed by two horizontal “Ladder Lattice” bands.

Catalogue number: CYP 381 (Fig. 103)

Excavation number: TWE-A-00915-C-019

Level: 7BC

Description: Rim fragment of a bowl. Painted decoration: dots on the rim, one horizontal “Ladder Lattice” band below the rim and one “Ladder” motif starting just below the first one.

References: Vansteenhuyse 2008, 110

Catalogue number: CYP 382

Excavation number: TWE-A-00928-C-008

Level: 8-7

Description: Rim fragment of a bowl. Painted decoration: two partial “Ladder Lattice” patterns.

Catalogue number: CYP 383

Excavation number: TWE-A-00903-C-019

Level: 6CD

Description: Rim fragment of a bowl. Painted decoration: one horizontal “Ladder Lattice” band under the rim, below which starts a pair of vertical lines. Diam: 24 cm.

Catalogue number: CYP 384 (Figs. 61, 104)

Excavation number: TWE-A-00908-C-001

Level: 7BC

Description: Almost complete profile of a bowl with a triangular handle. Painted decoration: one horizontal “Ladder Lattice” motif under the rim, below which are one vertical “Ladder Lattice” band, one pair of vertical lines and one vertical dotted line.

Catalogue number: CYP 385 (Fig. 105)

Excavation number: TWE-A-00851-C-024 joins with TWE-A-00851-C-025

Level: 7BC

Description: Rim and body fragment of a bowl with the beginning of a handle, white slip, painted decoration: a horizontal “Ladder Lattice” under the rim, below which is one group of four vertical parallel lines.

Catalogue number: CYP 386 (Fig. 106)

Excavation number: TWE-A-01072-C-002

Level: 7BC

Description: Rim fragment of a bowl, horizontal “Ladder Lattice” band painted below the rim.

Catalogue number: CYP 387 (Fig. 107)

Excavation number: TWE-A-00840-C-062

Level: 7BC

Description: Rim fragment of a bowl, a horizontal “Ladder Lattice” band under the rim, below which is a vertical ladder.

Catalogue number: CYP 388

Excavation number: TWE-A-00945-C-027

Level: 7DE

Description: Wishbone handle, bowl, several lines along the handle.

Catalogue number: CYP 389

Excavation number: TWE-A-00908-C-004

Level: 7BC

Description: Rim fragment of a bowl. Painted decoration: dots on the rim, horizontal “Ladder

Lattice” band below and traces of a vertical ladder.

Catalogue number: CYP 390 (Fig. 108)

Excavation number: TWE-A-00840-C-067

Level: 7BC

Description: Rim fragment, bowl.

References: Vansteenuyse 2008, 110

Catalogue number: CYP 391

Excavation number: TWE-A-00636-C-027

Level: 7BC

Description: Rim fragment, bowl.

Catalogue number: CYP 392

Excavation number: TWE-A-00874-C-010, C-014

Level: 7BC

Description: Rim fragment, bowl.

Catalogue number: CYP 393

Excavation number: TWE-A-00829-C-006, 007, 009

Level: /

Description: Rim and body fragments, bowl.

Catalogue number: CYP 394

Excavation number: TWE-A-00541-C-002

Level: 7BC

Description: Rim fragment, bowl.

Catalogue number: CYP 395

Excavation number: TWE-A-00829-C-008

Level: /

Description: Rim fragment, bowl.

Catalogue number: CYP 396

Excavation number: TWE-A-01008-C-003

Level: 7BC

Description: Rim fragment, bowl.

Catalogue number: CYP 397

Excavation number: TWE-A-01008-C-007

Level: 7BC

Description: Rim fragment, bowl.

Catalogue number: CYP 398

Excavation number: TWE-A-01061-C-015

Level: 8AB(-7DE)

Description: Rim fragment, open vessel.

Catalogue number: CYP 399

Excavation number: TWE-A-01000-C-035

Level: 7-1

Description: Rim fragment, bowl.

Catalogue number: CYP 400

Excavation number: TWE-A-00522-C-008

Level: 7BC

Description: Rim fragment and part of handle, bowl.

Catalogue number: CYP 401

Excavation number: TWE-A-00861-C-003

Level: 8CD-7

Description: Rim fragment, bowl.

Catalogue number: CYP 402

Excavation number: TWE-A-01014-C-009

Level: 7BC

Description: Rim fragment and handle, bowl.

Catalogue number: CYP 403

Excavation number: TWE-A-01614-C-018

Level: 6AB

Description: Rim fragment, bowl.

Catalogue number: CYP 404

Excavation number: TWE-A-00840-C-024

Level: 7BC

Description: Rim fragment, bowl.

Catalogue number: CYP 405

Excavation number: TWE-A-00841-C-077

Level: 7BC

Description: Rim fragment, bowl.

Catalogue number: CYP 406

Excavation number: TWE-A-00858-C-026

Level: 7BC

Description: Rim fragment, bowl.

Catalogue number: CYP 407

Excavation number: TWE-A-00858-C-033

Level: 7BC

Description: Rim fragment, bowl.

Catalogue number: CYP 408

Excavation number: TWE-A-00840-C-101

Level: 7BC

Description: Rim fragment, bowl.

Catalogue number: CYP 409

Excavation number: TWE-A-00840-C-171

Level: 7BC

Description: Rim fragment, bowl.

Catalogue number: CYP 410

Excavation number: TWE-A-00840-C-179

Level: 7BC

Description: Rim fragment, bowl.

Catalogue number: CYP 411

Excavation number: TWE-A-00851-C-011

Level: 7BC

Description: Rim fragment, bowl.

Catalogue number: CYP 412

Excavation number: TWE-A-00851-C-045

Level: 7BC

Description: Rim fragment, bowl.

Catalogue number: CYP 413

Excavation number: TWE-A-00851-C-054

Level: 7BC

Description: Rim fragment, bowl.

Catalogue number: CYP 414

Excavation number: TWE-A-01021-C-042

Level: 7BC

Description: Rim fragment, bowl.

Catalogue number: CYP 415

Excavation number: TWE-A-01021-C-043

Level: 7BC

Description: Rim fragment and handle, bowl.

Catalogue number: CYP 416

Excavation number: TWE-A-05763-C-006

Level: 7-6EF

Description: Rim fragment, desurfaced bowl.

Catalogue number: CYP 417

Excavation number: TWE-A-05763-C-007

Level: 7-6EF

Description: Rim fragment, bowl.

Catalogue number: CYP 418

Excavation number: TWE-A-02605-C-021

Level: 7BC

Description: Rim fragment, bowl.

Catalogue number: CYP 419

Excavation number: TWE-A-01021-C-045

Level: 7BC

Description: Rim fragment, bowl.

Catalogue number: CYP 420

Excavation number: TWE-A-01097-C-006

Level: 7DE-BC

Description: Rim fragment, bowl.

Catalogue number: CYP 421

Excavation number: TWE-A-05814-C-005

Level: 7-6

Description: Rim fragment, bowl.

Catalogue number: CYP 422

Excavation number: TWE-A-00847-C-050

Level: 7BC

Description: Rim fragment, bowl.

Catalogue number: CYP 423

Excavation number: TWE-A-06404-C-007

Level: 7?-6GH

Description: Wishbone handle, bowl.

Catalogue number: CYP 424

Excavation number: TWE-A-01014-C-008

Level: 7BC

Description: Wishbone handle, bowl.

Catalogue number: CYP 425

Excavation number: TWE-A-00633-C-007

Level: 7BC

Description: Wishbone handle, bowl.

Catalogue number: CYP 426

Excavation number: TWE-A-00826-C-020

Level: 7BC-6

Description: Handle, bowl.

Catalogue number: CYP 427

Excavation number: TWE-A-00538-C-009

Level: 7BC

Description: Handle, bowl.

Catalogue number: CYP 428

Excavation number: TWE-A-00874-C-004

Level: 7BC

Description: Wishbone handle, bowl.

Catalogue number: CYP 429

Excavation number: TWE-A-01014-C-005

Level: 7BC

Description: Wishbone handle, bowl.

Catalogue number: CYP 430

Excavation number: TWE-A-00858-C-036

Level: 7BC

Description: Horizontal handle, bowl.

Catalogue number: CYP 431

Excavation number: TWE-A-00855-C-047

Level: 7

Description: Horizontal handle, bowl.

Catalogue number: CYP 432

Excavation number: TWE-A-00600-C-0065

Level: Topsoil

Description: Body and handle fragment, bowl.

Catalogue number: CYP 433

Excavation number: TWE-07190-C-001

Level: 7BC

Description: Body fragment and handle, bowl.

Catalogue number: CYP 434 (Fig. 62)

Excavation number: 06027-C-003

Level: /

Description: Body fragment of an open vessel (just under the rim), white slip, decoration in black mat paint: four horizontal lines, one cross hatched lozenge.

Catalogue number: CYP 435 (Fig. 63)

Excavation number: TWE-A-01046-C-002

Level: 8AB(-7DE)

Description: Body fragment of a bowl, very white slip, "Ladder Lattice" motif in brown paint.

References: Vansteenhuyse 2008, 110

Catalogue number: CYP 436 (Fig. 64)

Excavation number: TWE-A-02607-C-016

Level: 8

Description: Body fragment of a bowl, light slip, “Ladder Lattice” in brown paint.

References: Vansteenhuyse 2008, 110

Catalogue number: CYP 437

Excavation number: TWE-A-01080-C-001

Level: 7BC

Description: Body fragment, bowl.

References: Vansteenhuyse 2008, 110

Catalogue number: CYP 438 (Fig. 109)

Excavation number: TWE-A-00838-C-043

Level: 7BC

Description: Body fragment of a bowl, “Ladder Lattice” pattern.

References: Vansteenhuyse 2008, 110

Catalogue number: CYP 439 (Fig. 65)

Excavation number: TWE-A-00847-C-045 possibly with 56 and 60

Level: 7BC

Description: Body fragments of a bowl, white slip, “Ladder Lattice” pattern, one vertical dotted line in brown paint.

Catalogue number: CYP 440

Excavation number: TWE-A-00848-C-040

Level: 7BC

Description: Body fragment of a bowl, buff slip, “Ladder Lattice” in brown paint.

Catalogue number: CYP 441

Excavation number: TWE-A-00246-C-004

Level: 7DE-7BC

Description: Body fragment of a bowl, painted decoration in the “Hooked Chain Style.”

Catalogue number: CYP 442 (Fig. 110)

Excavation number: TWE-A-02002-C-015

Level: 7-6CD

Description: Body fragment of a bowl, part of a “Ladder Lattice” pattern.

Catalogue number: CYP 443

Excavation number: TWE-A-00032-C-016

Level: transition to Iron Age

Description: Body fragment of a bowl, worn “Ladder Lattice” pattern.

Catalogue number: CYP 444

Excavation number: TWE-A-00541-C-014, 025

Level: 7BC

Description: Two body fragments of the same open vessel.

Catalogue number: CYP 445

Excavation number: TWE-A-00627-C-003

Level: 7BC

Description: Body fragment, bowl.

Catalogue number: CYP 446

Excavation number: TWE-A-00636-C-008

Level: 7BC

Description: Body fragment, bowl.

Catalogue number: CYP 447

Excavation number: TWE-A-01047-C-005

Level: 8AB(-7DE)

Description: Body fragment, bowl.

Catalogue number: CYP 448

Excavation number: TWE-A-00874-C-013

Level: 7BC

Description: Body fragment and onset of handle, bowl.

Catalogue number: CYP 449

Excavation number: TWE-A-00856-C-012

Level: 8AB

Description: Body fragment, bowl.

Catalogue number: CYP 450

Excavation number: TWE-A-00856-C-013

Level: 8AB

Description: Body fragment, bowl.

Catalogue number: CYP 451

Excavation number: TWE-A-01019-C-007

Level: 7BC

Description: Body fragment, bowl.

Catalogue number: CYP 452

Excavation number: TWE-A-00855-C-093

Level: 7

Description: Body fragment and onset of handle, bowl.

Catalogue number: CYP 453

Excavation number: TWE-A-01020-C-021

Level: 7BC

Description: Body fragment, bowl, very bluish slip.

Catalogue number: CYP 454**Excavation number:** TWE-A-01022-C-019**Level:** 7BC**Description:** Body fragment, bowl.**Catalogue number: CYP 455****Excavation number:** TWE-A-01019-C-074**Level:** 7BC**Description:** Body fragment, bowl.**Catalogue number: CYP 456****Excavation number:** TWE-A-01619-C-050**Level:** 7?**Description:** Body fragment of a bowl. Painted decoration: two parallel vertical lines.**Catalogue number: CYP 457****Excavation number:** TWE-A-01025-C-012**Level:** 7?**Description:** Body fragment, bowl.**Catalogue number: CYP 458****Excavation number:** TWE-A-00847-C-048**Level:** 7BC**Description:** Body fragment, bowl.**Catalogue number: CYP 459****Excavation number:** TWE-A-00847-C-053 possibly with C-054**Level:** 7BC**Description:** Body fragment, bowl.**Catalogue number: CYP 460****Excavation number:** TWE-A-00848-C-035**Level:** 7BC**Description:** Body fragment, bowl.**Catalogue number: CYP 461****Excavation number:** TWE-A-00848-C-036**Level:** 7BC**Description:** Body fragment, bowl.**Catalogue number: CYP 462****Excavation number:** TWE-A-00848-C-037**Level:** 7BC**Description:** Body fragment, bowl.**Catalogue number: CYP 463****Excavation number:** TWE-A-00848-C-042**Level:** 7BC**Description:** Body fragment, bowl.**Catalogue number: CYP 464****Excavation number:** TWE-A-00848-C-046**Level:** 7BC**Locus:** 848**Description:** Body fragment, bowl.**Catalogue number: CYP 465****Excavation number:** TWE-A-00848-C-049**Level:** 7BC**Description:** Body fragment, bowl.**Catalogue number: CYP 466****Excavation number:** TWE-A-00848-C-050**Level:** 7BC**Description:** Body fragment, bowl.**Catalogue number: CYP 467****Excavation number:** TWE-A-00848-C-053**Level:** 7BC**Description:** Body fragment, bowl.**Catalogue number: CYP 468****Excavation number:** TWE-A-00840-C-057**Level:** 7BC**Description:** Body fragment, bowl.**Catalogue number: CYP 469****Excavation number:** TWE-A-00840-C-059**Level:** 7BC**Description:** Body fragment, bowl.**Catalogue number: CYP 470****Excavation number:** TWE-A-00840-C-060**Level:** 7BC**Description:** Body fragment, bowl.**Catalogue number: CYP 471 (Fig. 111)****Excavation number:** TWE-A-00840-C-065**Level:** 7BC**Description:** Body fragment of a bowl, a vertical ladder.**Catalogue number: CYP 472 (Fig. 112)****Excavation number:** TWE-A-00840-C-066**Level:** 7BC**Description:** Body fragment of a bowl, two vertical ladders.**References:** Vansteenhuyse 2008, 110**Catalogue number: CYP 473****Excavation number:** TWE-A-00840-C-072

Level: 7BC

Description: Body fragment, bowl.

Catalogue number: CYP 474

Excavation number: TWE-A-00840-C-077

Level: 7BC

Description: Body fragment, bowl.

Catalogue number: CYP 475

Excavation number: TWE-A-00840-C-081

Level: 7BC

Description: Body fragment, bowl.

Catalogue number: CYP 476

Excavation number: TWE-A-00840-C-084

Level: 7BC

Description: Body fragment, bowl.

Catalogue number: CYP 477

Excavation number: TWE-A-00840-C-086

Level: 7BC

Description: Body fragment, bowl.

Catalogue number: CYP 478

Excavation number: TWE-A-00840-C-087

Level: 7BC

Description: Body fragment, bowl.

Catalogue number: CYP 479

Excavation number: TWE-A-00840-C-089

Level: 7BC

Description: Body fragment, bowl.

Catalogue number: CYP 480

Excavation number: TWE-A-00840-C-090

Level: 7BC

Description: Body fragment, bowl.

Catalogue number: CYP 481

Excavation number: TWE-A-00840-C-095

Level: 7BC

Description: Body fragment, bowl.

Catalogue number: CYP 482

Excavation number: TWE-A-00840-C-098

Level: 7BC

Description: Body fragment, bowl.

Catalogue number: CYP 483

Excavation number: TWE-A-00840-C-099

Level: 7BC

Description: Body fragment, bowl.

Catalogue number: CYP 484

Excavation number: TWE-A-00840-C-100

Level: 7BC

Description: Body fragment, bowl.

Catalogue number: CYP 485

Excavation number: TWE-A-00840-C-102

Level: 7BC

Description: Body fragment, bowl.

Catalogue number: CYP 486

Excavation number: TWE-A-00840-C-135

Level: 7BC

Description: Body fragment, bowl.

Catalogue number: CYP 487

Excavation number: TWE-A-00851-C-055

Level: 7BC

Description: Body fragment, bowl.

Catalogue number: CYP 488

Excavation number: TWE-A-00851-C-057

Level: 7BC

Description: Body fragment, bowl.

Catalogue number: CYP 489

Excavation number: TWE-A-00909-C-004

Level: 7BC

Description: Body fragment of a bowl, "Ladder Lattice Pattern."

Catalogue number: CYP 490

Excavation number: TWE-A-00945-C-028

Level: 7DE

Description: Body fragment of a bowl, "Ladder Lattice Pattern."

Catalogue number: CYP 491

Excavation number: TWE-A-00969-C-013

Level: 7DE

Description: Body fragment of a bowl, "Ladder Lattice Pattern."

Catalogue number: CYP 492

Excavation number: TWE-A-00969-C-027

Level: 7DE

Description: Body fragment of a bowl, "Ladder Lattice Pattern."

Catalogue number: CYP 493

Excavation number: TWE-A-01021-C-041

Level: 7BC

Description: Body fragment, bowl.

Catalogue number: CYP 494

Excavation number: TWE-A-01021-C-044

Level: 7BC

Description: Body fragment, bowl.

Catalogue number: CYP 495

Excavation number: TWE-A-01021-C-046

Level: 7BC

Description: Body fragment, bowl.

Catalogue number: CYP 496

Excavation number: TWE-A-01027-C-030

Level: 8CD-7BC

Description: Handle, bowl.

Catalogue number: CYP 497

Excavation number: TWE-A-01027-C-023

Level: 8CD-7BC

Description: Body fragment, bowl.

Catalogue number: CYP 498

Excavation number: TWE-A-01200-C-079

Level: Topsoil

Description: Body fragment, bowl, very worn. brownish paint.

Catalogue number: CYP 499

Excavation number: TWE-A-01310-C-027

Level: 7BC-6

Description: Fragment of a horizontal wishbone handle, bowl.

Catalogue number: CYP 500

Excavation number: TWE-A-05814-C-004

Level: 7-6

Description: Fragment of a horizontal wishbone handle, bowl.

Catalogue number: CYP 501

Excavation number: TWE-A-05863-C-004

Level: 7-6EF?

Description: Body fragment of bowl. Painted decoration: one straight line and one dotted line.

Catalogue number: CYP 502

Excavation number: TWE-A-07157-C-010

Level: 7-6

Description: Body fragment, bowl.

White Slip II Late

Catalogue number: CYP 503 (Figs. 66, 113)

Excavation number: TWE-A-01064-C-002

Level: 8-7

Description: Rim fragment of a bowl, light buff slip, painted decoration: four horizontal lines under the rim (two thicker outer lines and two thinner inner lines), below which are groups of four and two vertical lines.

References: Vansteenhuyse 2008, 110, fig. 5:3

Catalogue number: CYP 504 (Fig. 114)

Excavation number: TWE-A-00422-C-035

Level: 7BC-4

Description: Rim fragment of a bowl, four parallel lines under the rim, below which are four vertical lines. One dot in the blank space.

References: Vansteenhuyse 2008, 110, fig. 5:3

Catalogue number: CYP 505 (Fig. 115)

Excavation number: TWE-A-00838-C-034, 017

Level: 7BC

Description: Rim and body fragment of a bowl, four horizontal lines below the rim.

References: Vansteenhuyse 2008, 110, fig. 5:3

Catalogue number: CYP 506 (Fig. 116)

Excavation number: TWE-A-00217-C-007

Level: 6AB

Description: Rim fragment of a bowl, whitish slip, traces of a decoration in brown paint: four horizontal parallel lines under the rim, below which starts a group of four vertical parallel lines.

References: Vansteenhuyse 2010, ill. 4.3

Catalogue number: CYP 507a, b (Figs. 68b, 117, 118)

Excavation number: TWE-A-00838-C-032, 033

Level: 7BC

Description: Rim and body fragments of a bowl, four horizontal parallel lines under the rim, four vertical parallel lines.

References: Vansteenhuyse 2008, 110

Catalogue number: CYP 508 (Figs. 68a, 119)

Excavation number: TWE-A-00838-C-046

Level: 7BC

Description: Rim fragment of a bowl with the beginning of a handle. Worn slip, brown paint, four parallel lines under the rim, beginning of vertical parallel lines under the handle.

References: Vansteenhuyse 2008, 110

Catalogue number: CYP 509 (Fig. 67)

Excavation number: TWE-A-00843-C-015

Level: 7BC

Description: Rim and body fragment of a bowl with the beginning of a broken handle, light buff slip, four horizontal parallel lines in a brown paint under the rim, groups of four parallel vertical lines.

References: Vansteenhuyse 2008, 110

Catalogue number: CYP 510

Excavation number: TWE-A-00426-C-027

Level: 7BC

Description: Rim fragment and onset of handle, bowl.

Catalogue number: CYP 511

Excavation number: TWE-A-00518-C-006

Level: 7BC

Description: Rim fragment, bowl.

Catalogue number: CYP 512

Excavation number: TWE-A-00519-C-006

Level: 7BC

Description: Rim fragment, bowl.

Catalogue number: CYP 513

Excavation number: TWE-A-00532-C-021

Level: 7BC

Description: Rim fragment, bowl.

Catalogue number: CYP 514

Excavation number: TWE-A-00532-C-023

Level: 7BC

Description: Rim fragment, bowl.

Catalogue number: CYP 515

Excavation number: TWE-A-00541-C-021

Level: 7BC

Description: Rim fragment, bowl.

Catalogue number: CYP 516

Excavation number: TWE-A-00541-C-026

Level: 7BC

Description: Rim fragment, bowl.

Catalogue number: CYP 517

Excavation number: TWE-A-00840-C-063

Level: 7BC

Description: Rim fragment, bowl.

Catalogue number: CYP 518

Excavation number: TWE-A-00840-C-088

Level: 7BC

Description: Rim fragment and onset of handle, bowl.

Catalogue number: CYP 519

Excavation number: TWE-A-00848-C-121

Level: 7BC

Description: Rim fragment and handle, bowl.

Catalogue number: CYP 520

Excavation number: TWE-A-00855-C-019

Level: 7

Description: Rim fragment and onset of handle, bowl.

Catalogue number: CYP 521

Excavation number: TWE-A-00859-C-006

Level: 8AB

Description: Rim fragment and onset of handle, bowl.

Catalogue number: CYP 522

Excavation number: TWE-A-00908-C-002

Level: 7BC

Description: Rim fragment of a bowl. Painted decoration: four horizontal parallel lines below the rim. Diam: 18 cm.

Catalogue number: CYP 523

Excavation number: TWE-A-01700-C-009

Level: 5-1

Description: Rim fragment, bowl.

Catalogue number: CYP 524

Excavation number: TWE-A-01071-C-003

Level: 7BC

Description: Rim fragment, bowl.

Catalogue number: CYP 525

Excavation number: TWE-A-06454-C-027

Level: 6EF

Description: Rim fragment and handle, bowl.

Catalogue number: CYP 526

Excavation number: TWE-A-04021-C-015

Level: 7-5

Description: Rim fragment, bowl.

Catalogue number: CYP 527

Excavation number: TWE-A-05581-C-003

Level: 7AB

Description: Rim and body fragment, bowl.

Catalogue number: CYP 528

Excavation number: TWE-A-04014-011

Level: 7BC(-6AB)

Description: Rim fragment, bowl.

Catalogue number: CYP 529 (Figs. 68e, 120)

Excavation number: TWE-A-00838-C-038

Level: 7BC

Description: Rounded bottom of a bowl, whitish slip, reddish paint on the outside: four groups of four parallel lines converging towards the center of the bottom of the bowl.

Catalogue number: CYP 530 (Fig. 68f)

Excavation number: TWE-A-00838-C-040

Level: 7BC

Description: Rim and body fragment of a bowl, yellowish slip, red painted decoration: four horizontal lines under the rim, below which is a group of four vertical lines.

Catalogue number: CYP 531

Excavation number: TWE-A-00843-C-032

Level: 7BC

Description: Body fragment and handle, bowl.



Fig. 1. CYP 1



Fig. 2. CYP 2



Fig. 3a, b. CYP 5

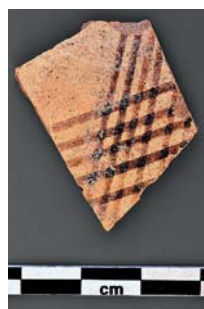


Fig. 4. CYP 6



Fig. 5. CYP 8



Fig. 6. CYP 14



Fig. 7. CYP 23



Fig. 8. CYP 24



Fig. 9. CYP 25



Fig. 10. CYP 26



Fig. 12. CYP 31



Fig. 11a, b, c. CYP 28, 29, 30



Fig. 13. CYP 37



Fig. 14. CYP 38



Fig. 15. CYP 40



Fig. 16. CYP 41



Fig. 17. CYP 42



Fig. 18. CYP 55



Fig. 19a, b. CYP 58



Fig. 20a, b. CYP 52, CYP 63



Fig. 21. CYP 123



Fig. 22a, b. CYP 124



Fig. 23. CYP 125



Fig. 24. CYP 126



Fig. 25. CYP 131



Fig. 26. CYP 132



Fig. 27. CYP 133



Fig. 28a, b. CYP 134



Fig. 29. CYP 135



Fig. 30. CYP 136



Fig. 31. CYP 138



Fig. 32. CYP 170



Fig. 33. CYP 171



Fig. 34. CYP 172



Fig. 35. CYP 176



Fig. 36. CYP 184



Fig. 37. CYP 186



Fig. 38. CYP 189



Fig. 39. Fig. 35. CYP 196



Fig. 40. CYP 200

Fig. 41a.
CYP 205

Fig. 41b.
CYP 206

Fig. 41c.
CYP 208



Fig. 41d.
CYP 241



Fig. 42. CYP 207



Fig. 43. CYP 215



Fig. 44. CYP 216

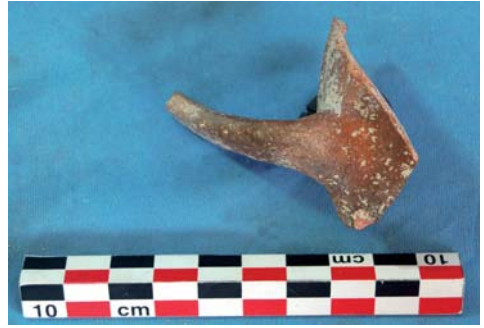


Fig. 45. CYP 217



Fig. 46. CYP 233



Fig. 47. CYP 243



Fig. 48. CYP 250

Fig. 49a, b.
CYP 251; CYP 313

Fig. 50. CYP 311



Fig. 51. CYP 320



Fig. 52. CYP 338



Fig. 54. CYP 357



Fig. 53. CYP 342



Fig. 55. CYP 359



Fig. 56. CYP 366



Fig. 57a-e. CYP 360, CYP 361, CYP 362, CYP 363, CYP 364



Fig. 58. CYP 370



Fig. 59. CYP 375

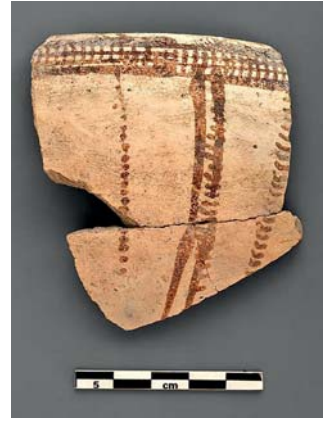


Fig. 60. CYP 382



Fig. 61a, b. CYP 384



Fig. 62. CYP 434



Fig. 63. CYP 435



Fig. 64. CYP 436



Fig. 65. CYP 439



Fig. 66. CYP 503



Fig. 67. CYP 509



Fig. 68a-f

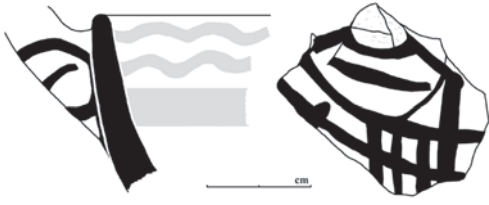


Fig. 69. CYP 5



Fig. 70. CYP 7

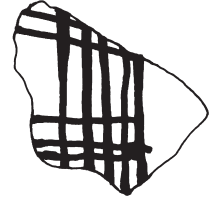


Fig. 71. CYP 9

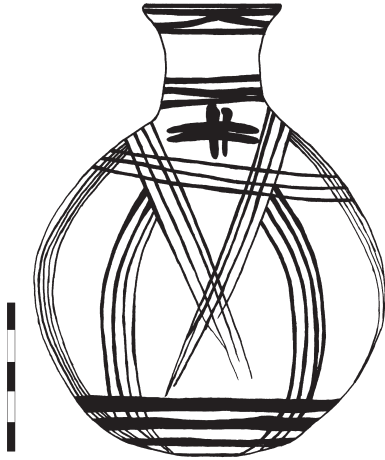


Fig. 72. CYP 23

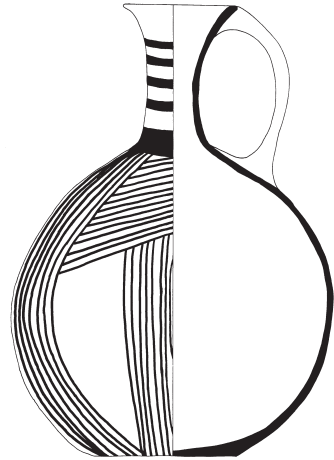


Fig. 74. CYP 30



Fig. 73. CYP 26



Fig. 75. CYP 32

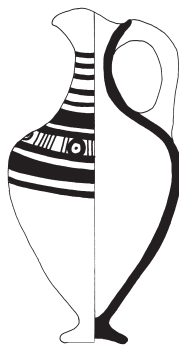


Fig. 76. CYP 33



Fig. 77. CYP 34

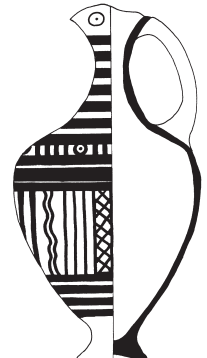


Fig. 78. CYP 35



Fig. 79. CYP 123



Fig. 80. CYP 124

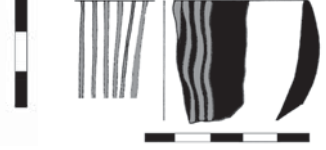


Fig. 81. CYP 126

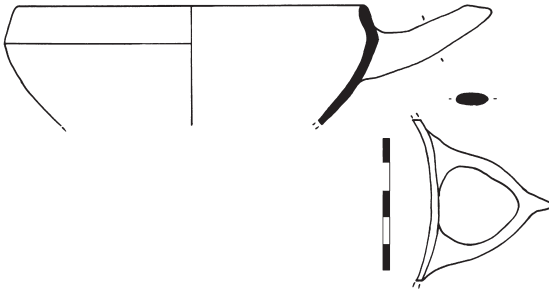


Fig. 82. CYP 135

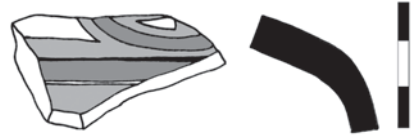


Fig. 83. CYP 173

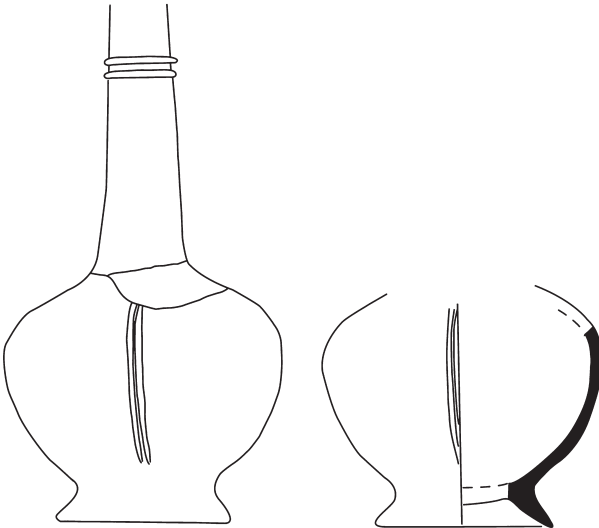


Fig. 84. CYP 187



Fig. 85. CYP 188

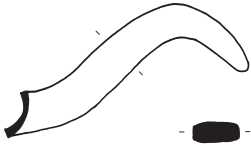


Fig. 86. CYP 196

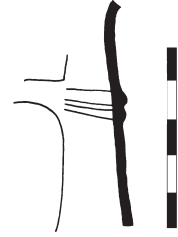
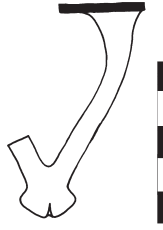


Fig. 87. CYP 207



Fig. 88. CYP 232

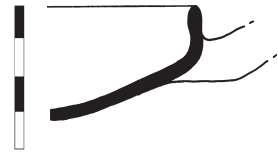


Fig. 89. CYP 237

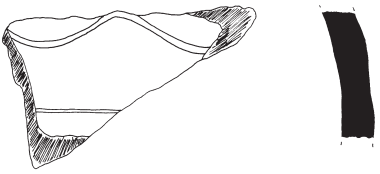


Fig. 90. CYP 358



Fig. 91. CYP 360

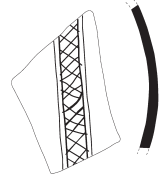


Fig. 92. CYP 361

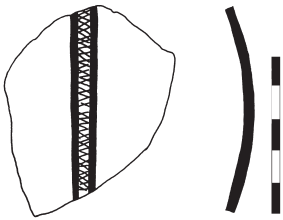


Fig. 92. CYP 363

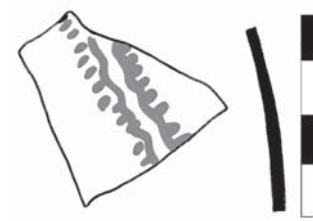


Fig. 94. CYP 365

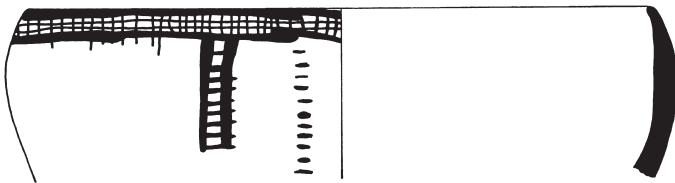


Fig. 95. CYP 368

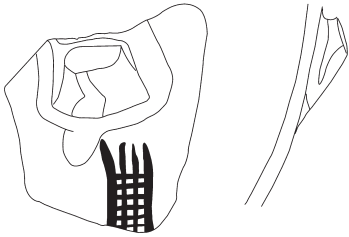


Fig. 96. CYP 369

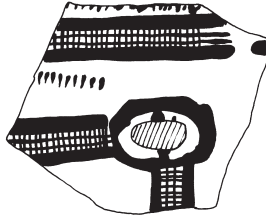


Fig. 97. CYP 370



Fig. 98. CYP 372a

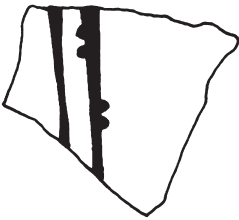


Fig. 99. CYP 372b

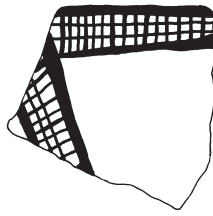


Fig. 100. CYP 373

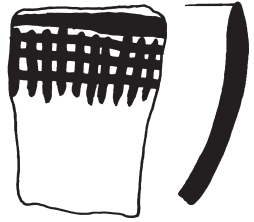


Fig. 101. CYP 376

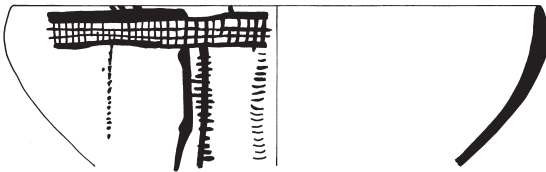


Fig. 102. CYP 379

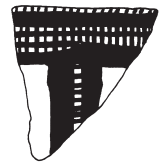


Fig. 103. CYP 381

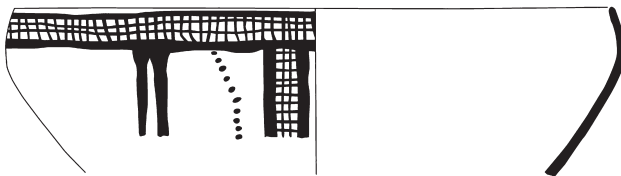
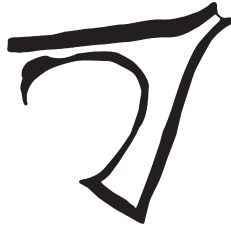


Fig. 104. CYP 384



Fig. 105. CYP 385

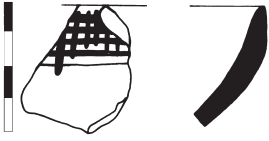


Fig. 106. CYP 386

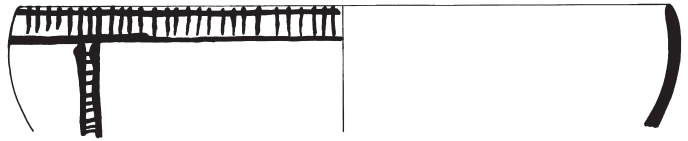


Fig. 107. CYP 387



Fig. 108.
CYP 390



Fig. 109.
CYP 438

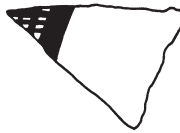


Fig. 110.
CYP 442

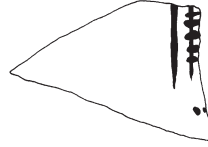


Fig. 111.
CYP 471

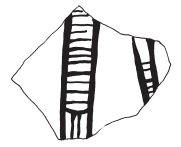


Fig. 112.
CYP 472

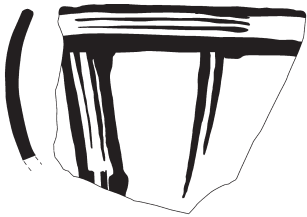


Fig. 113. CYP 503



Fig. 114. CYP 504

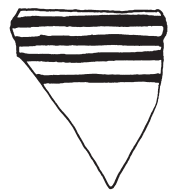


Fig. 115. CYP 505

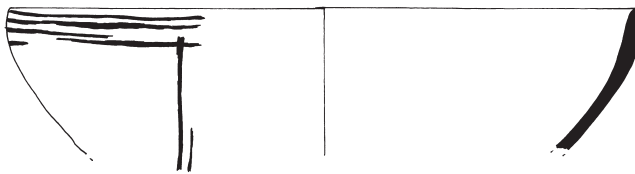


Fig. 116. CYP 506



Fig. 117.
CYP 507a



Fig. 118.
CYP 507b



Fig. 119.
CYP 508



Fig. 120.
CYP 529