



Carry Trade and Negative Policy Rates in Switzerland : Low-lying fog or storm ?

Bruno Thiago Tomio, Guillaume Vallet

► To cite this version:

Bruno Thiago Tomio, Guillaume Vallet. Carry Trade and Negative Policy Rates in Switzerland : Low-lying fog or storm ?. 25th FMM (Forum for Macroeconomics and Macroeconomic Policies) conference "Macroeconomics of Socio-Ecological Transition", Hans-Böckler-Stiftung, Oct 2021, Berlin, Germany. halshs-03669561

HAL Id: halshs-03669561

<https://shs.hal.science/halshs-03669561>

Submitted on 16 May 2022

HAL is a multi-disciplinary open access archive for the deposit and dissemination of scientific research documents, whether they are published or not. The documents may come from teaching and research institutions in France or abroad, or from public or private research centers.

L'archive ouverte pluridisciplinaire **HAL**, est destinée au dépôt et à la diffusion de documents scientifiques de niveau recherche, publiés ou non, émanant des établissements d'enseignement et de recherche français ou étrangers, des laboratoires publics ou privés.

Carry trade and negative interest rate policy in Switzerland: Low-lying fog or storm?

Bruno Thiago Tomio* Guillaume Vallet†

Abstract

This article uses data from hedge funds to investigate the behavior of the Swiss franc carry trade in the period of negative interest rate policy in Switzerland. In an effort to disentangle the funding currency and safe haven effects embedded in the Swiss carry trade activity with four target currencies (U.S. dollar, euro, Japanese yen, and British pound), we estimate structural vector autoregressive models with financial variables. Along with evidence for the funding currency and safe haven effects, results also show that: (i) the uncovered interest rate parity is violated for the U.S. dollar, euro and Japanese yen models, (ii) hedge funds are able to move asset prices, and (iii) an increased systemic risk is linked to a higher Swiss franc carry trade activity.

Keywords: Carry trade; Negative interest rate policy; Market volatility; Swiss franc; SVAR model

JEL Codes: E43; E44; E52; F31; F37

*Université Grenoble Alpes, Centre de Recherche en Économie de Grenoble (CREG), and Universidade de Blumenau (FURB), bttomio@furb.br (Corresponding author)

†Université Grenoble Alpes, Centre de Recherche en Économie de Grenoble (CREG), guillaume.vallet@univ-grenoble-alpes.fr

1 Introduction

The COVID-19 crisis has mobilized central banks to an extent rarely seen in history, even during crises. Similarly to the 2008 “Great recession” crisis, far-sweeping measures were enforced to avert the risk of financial turmoil and restore confidence in the global economy. Indeed, the 2020 crisis has increased global uncertainty on financial markets as well as countries’ economic vulnerability, which is likely to affect negatively the economies, compelling central banks to implement “loose” monetary policies durably. Symmetrically, such monetary policies exert consequences on monetary and financial activities. In particular, the rise in monetary base and central banks’ low or even negative interest rates policies are likely to increase global financial instability: against this backdrop, speculators can look for high returns, akin to take high risks.

This is the case for currency carry trade activities, which can be fostered through the search for safety and liquidity, in the context of international capital mobility. Specifically, with carry trade activities, central banks whose currency is perceived as “safe haven assets” face an increased demand, leading to exchange rate instability. The case of the Swiss franc exemplifies this: in spite of very low – and even negative sometimes – yields, assets denominated in this currency systematically face a strong demand in case of international turmoil ([Guillaumin and Vallet 2012](#); [Vallet 2016](#)). As a result, the Swiss franc appreciates toward other currencies. Depending on the magnitude of the appreciation, the latter puts strain on the Swiss monetary policy ([Gubler 2014](#)).

In the context of the Swiss National Bank’s (SNB) negative policy interest rate, this paper aims to investigate the behavior of the Swiss franc (CHF) carry trade with four target currencies (U.S. dollar, euro, Japanese yen, and British pound) by disentangling the funding currency and safe haven effects. Whereas most of the literature on the currency carry trade focuses on the estimated excess returns of currency carry portfolios, we opt to proxy the carry trade using weekly positioning data released by the U.S. Commodity Futures Trading Commission (CFTC). Our carry trade proxy is constructed with the volume of hedge funds (leveraged funds) contracts, following [Fong \(2013\)](#). More specifically, we refer to the Swiss franc carry trade as the strategy of shorting the Swiss franc (funding currency) to build long

positions in the target currencies¹.

The main contribution of this paper to the existing literature is the novel approach to investigate thoroughly the implied Swiss franc carry trade by exploring: (i) the hedge funds' behavior with CFTC data, i.e. quantity data (Dupuy, James, and Marsh 2021), not prices as proxied by the expected excess returns, (ii) the period of negative policy interest rates and (iii) the dual role of the Swiss franc as a funding and safe haven currency. The core of the paper examines the determinants and the impacts of this carry trade activity using the results from impulse-response functions of a six-variable structural vector autoregressive model (SVAR) for each target currency. Besides our carry trade proxy, we focus on five financial variables: interest rate differential between Switzerland and target currency (market-driven interest rates), global market sentiment, nominal exchange rates, Swiss stock market index, and target currency stock market indices.

Our results show salient features of the Swiss franc acting as a funding currency for carry trade activities, as well as a safe haven currency. Regarding the former, we find evidence that: (i) a higher market sentiment leads to an increase in the Swiss franc carry trade in the EUR model, (ii) the foreign stock market index in the EUR model shocks positively our carry trade proxy and (iii) the uncovered interest rate parity (UIP) does not hold for the USD, EUR and JPY models. The UIP failure is an important result that confirms the existence of the carry trade activity, contradicting current international finance theory. For the latter, our carry trade proxy responds: (i) positively to an increase in the market sentiment in the GBP model and to a Swiss franc depreciation in the USD, EUR and JPY models and (ii) in an inverse manner with the foreign stock market index in the USD model and with the Swiss stock market index in the JPY and GBP models.

Most importantly, in all models, an increased Swiss franc carry trade activity increments the global risk and contracts foreign and Swiss stock market prices. By creating an incentive to the Swiss franc carry trade activity, the impact of the SNB's negative policy interest rate resonates far beyond Switzerland, leading to a systemic risk externality. Furthermore, we document that hedge funds (i.e. institutional investors) are able to move asset prices.

¹On currency futures, a short (long) position is an obligation to sell (buy) currencies at an agreed rate and at a specified future date.

1.1 Related literature

The Swiss franc presents us with a twofold interest. First, the Swiss franc is a funding currency by virtue of the long-established Swiss “interest rates bonus” (Kugler and Weder 2002). Historically, such a “bonus” usually kept both short and long real interest rates lower than in other countries. This specific monetary framework motivates investors to borrow and to contract debts labeled in Swiss francs. Besides this Swiss bonus, another contributing factor is the SNB’s monetary policy of negative interest rates, whose impact is far-reaching in the global financial system. Second, in times of turmoil, the Swiss franc reverts to its core function as a safe haven currency, leading to a rise in the demand in Swiss franc-denominated assets (Ranaldo and Söderlind 2010).

From the investors’ perspective, the usual carry trade strategy is to derive profit from country-to-country interest rate differentials. This is only achievable in situations where the hypothesis of UIP does not hold. According to the UIP, the interest rate differential between the domestic country and the foreign country invariably matches the expected depreciation of the domestic country currency. As the seminal paper by Fama (1984) documents, all carry trade-derived profit relies on the invalidity of the UIP. Brunnermeier, Nagel, and Pedersen (2008) refers to this condition as the “forward premium puzzle.” Furthermore, as widely documented in the literature, the UIP has repeatedly been proven invalid (e.g. Farhi and Gabaix 2016; Dupuy, James, and Marsh 2021). This has been the case for the Swiss franc whose fluctuations earned it the nickname of “strange animal” (Jochum and Savioz 2005).

The literature on carry trade is extensive. One large body of this literature focuses on empirical studies of hypothetical portfolios of carry trade. Overall, the data used to investigate these portfolios relates to the estimated profitability (excess returns) of carry trade (e.g. Burnside, Eichenbaum, and Rebelo 2007; Clarida, Davis, and Pedersen 2009; Darvas 2009; Menkhoff et al. 2012; Cenedese, Sarno, and Tsiakas 2014; Daskov and Swinkels 2015; Breedon, Rime, and Vitale 2016). However, excessive attention has been paid to the simulation of carry trade-generated profits.

In this paper, we focus on the research that explores other aspects of carry trade, such as its impact on domestic economies, via exchange rates and financial markets channels, and on the

stability of the international financial system. Of particular interest is the side effect of the above-mentioned “forward premium puzzle,” which is characterized by dramatic exchange rate fluctuations which disrupt the exchange rate equilibrium. Carry trade no doubt accounts to a large extent for foreign exchange rate puzzles ([Spronk, Verschoor, and Zwinkels 2013](#)). Also, the likelihood of a crash due to losses in carry trade positions is high. To that extent, carry trade also increases the global risk ([Brunnermeier, Nagel, and Pedersen 2008](#)).

In another strand of research on carry trade, broader capital flows are used as a proxy to explore the negative spillovers of this speculative activity (e.g. [Dodd and Griffith-Jones 2007](#); [Spronk, Verschoor, and Zwinkels 2013](#); [Fritz and Prates 2014](#); [Prates and Paula 2017](#); [Goda and Priewe 2019](#)). This is an arduous undertaking, as the balance of payments makes it impossible to distinguish carry trade from other types of flows. [Agrippino and Rey \(2013\)](#) went down a similar path but relied on the data from banking statistics, supplied by the Bank of International Settlements (BIS).

The literature on the linkages between carry trade and negative interest rates is recent, notably on the Swiss case. For example, [Hameed and Rose \(2018\)](#) assert that negative interest rates in Switzerland bear no effect on carry trade returns. They find no sufficient evidence that negative interest rates change exchange rate behavior. This contradicts the view held by the SNB that the effects of a negative interest rate policy would become apparent in the exchange rate channel ([Jordan 2016](#)). Another example is [Kay \(2018\)](#), who points out that negative policy interest rates encourage carry trade, which may also increase risks with their unpredictable unwind.

2 Data and SVAR methodology

2.1 Data specification²

To investigate the behavior of the Swiss franc carry trade in the context of the SNB’s negative policy interest rate, we structure an individual dataset for each of the following

²Data and command (Stata Do-file) are available upon request.

target currencies: U.S. dollar (USD), euro (EUR), Japanese yen (JPY), and British pound (GBP). Table 1 defines the six variables present in each dataset, where i indicates the target currency. Whenever possible, variables are in logarithmic form to add non-linear information.

Table 1: Description of variables

Variable	Definition	Source
IRD_i	Interest rate differential using the 12-Month London Interbank Offered Rate (LIBOR) for CHF and the spot LIBOR rates for target currencies (USD, EUR, JPY, and GBP)	FRED
VIX^*	Market sentiment: CBOE DJIA Volatility Index	FRED
CT_i	Net position of Swiss franc-funded carry trade by target currencies, following Fong (2013)	CFTC
ER_i^*	Nominal exchange rates: USD/CHF, EUR/CHF ^a , CHF/JPY ^{a,b} , GBP/CHF ^a	BIS
FSM_i^*	Foreign stock markets: S&P 500 (^GSPC) - USD, EURONEXT 100 (^N100) - EUR, Nikkei 225 (^N225) - JPY, FTSE 100 (^FTSE) - GBP	Yahoo Finance
SM^*	Domestic stock market: Swiss Market Index (^SSMI)	Yahoo Finance

* In logarithmic form.

^a Cross rates obtained with the USD exchange rate.

^b It follows the order of priority, with higher-ranked currency on top ([Donnelly 2019](#)).

Notes: Yahoo Finance data is gathered using the R package quantmod (function GetSymbols), developed by [Ryan and Ulrich \(2020\)](#). The R package BatchGetSymbols, written by [Perlin \(2020\)](#), was used to confirm that the collected data was clean. R code used to collect data can be supplied upon request. See Appendix A for more details on the data.

We rule out the possibility of sample-selection bias by using the longest available sample. Our period ranges from December 23, 2014 to November 24, 2020. On December 18, 2014, the SNB started with the negative policy interest rate by setting it at -0.25%. The use of weekly data is the reason for the mismatch between the initial date of our period and the beginning of the negative policy interest rates in Switzerland.

There is an abundant past literature on the behavior of speculators, prime among which is the CFTC data (e.g. [Houthakker 1957](#); [Chalupa 1982](#); [Goldstein 1983](#); [Chang, Michael Pinegar, and Schachter 1997](#); [Adrangi and Chatruth 1998](#); [Klitgaard and Weir 2004](#); [Mogford and Pain 2006](#); [Galati, Heath, and McGuire 2007](#); [Nishigaki 2007](#); [Brunnermeier, Nagel, and Pedersen 2008](#); [Gubler 2014](#); [Mulligan and Steenkamp 2018](#); [Tomio 2020](#); [Kang, Rouwenhorst, and Tang 2020](#); [Hasselgren, Peltomäki, and Graham 2020](#)).

As acknowledged by market participants, CFTC data is a reliable indicator of carry trade trends ([Bank for International Settlements 2015](#)). It is weekly released to the public under the Commitments of Traders (COT) report, providing the open interest for futures and options on futures markets. Regarding currency futures and options positions, two COT reports are available: Legacy³ and Traders in Financial Futures (TFF). Our positions data is extracted from the latter, which reports four trader categories: (1) Dealer/Intermediary, (2) Asset Manager/Institutional, (3) Leveraged Funds, and (4) Other Reportables.

The focus of this paper is the category “Leveraged Funds.” Traders classified as such are part of the “buy-side” of the market. It is a group composed mainly by hedge funds, jointly with other types of money managers (for example, registered commodity trading advisors - CTAs). We choose this group because they commonly engage in speculative positions in order to arbitrage within and across markets with “proprietary futures trading and trading on behalf of speculative clients” ([Commodity Futures Trading Commission 2020](#)). Hereafter, we refer to this category as hedge funds.

Any results derived from the use of our proxy of carry trade should be weighted against its own shortcomings, as previously highlighted by [Galati, Heath, and McGuire \(2007\)](#), [Curcuro, Vega, and Hoek \(2011\)](#), and [Bank for International Settlements \(2015\)](#). The first caveat relates to the lack of definition of the trading activity, as some contracts by hedge funds may not be used in the carry trade strategy. Second, over-the-counter contracts, which are not subject to CFTC reporting requirements, are largely used in carry trade activities. Third, only a small fraction of the overall foreign exchange market activity is executed through exchanges, as pointed out by the BIS Triennial Bank Survey of Foreign Exchange and Derivative Market Activity ([Galati, Heath, and McGuire 2007](#)). All caveats considered, we show that the data fits well many specific features of the carry trade activity.

As a proxy of carry trade, we calculate the net position of Swiss franc-funded carry trades by target currency. The following procedure follows closely the construct of the implied

³In this report, traders are classified either as commercial or non-commercial. After filling a statement and being verified, a trading entity is classified as commercial if it uses futures contracts for hedging, as defined in the CFTC Regulation 1.3, 17 CFR 1.3(z) ([Commodity Futures Trading Commission 2020](#)). This categorization drew criticism on alleged grounds of “naivete” ([Hartzmark 1987, 1296](#)), as all other traders that do not qualify as hedgers are classified as non-commercial or speculators.

yen-funded positions proposed by [Fong \(2013\)](#). All positions in the TFF report are expressed in U.S. dollars. As an example, consider the Swiss franc carry trade with the euro (EUR) as a target currency (CT_{EUR}). First, on reporting day t of a specific week⁴, we collect data on the number of long USD/short CHF contracts and long EUR/short USD for that day. This is the data we can collect directly from the CFTC. We gather data for both futures and options contracts. Second, we multiply the number of contracts by the spot exchange rates⁵, respectively. The smaller of the two positions is then converted in CHF and divided by 125 000 (the minimum contract size for Swiss franc futures on the Chicago Mercantile Exchange)⁶. The result is the number of implied long EUR/short CHF contracts ($LongPositions_{CT_{EUR}}$). Conversely, similar manner is used to calculate the number of implied short EUR/long CHF contracts ($ShortPositions_{CT_{EUR}}$). In the last step, we calculate the Swiss franc carry trade with the euro as the target currency as follows:

$$CT_i = \frac{LongPositions_{CT_i} - ShortPositions_{CT_i}}{LongPositions_{CT_i} + ShortPositions_{CT_i}} \quad (1)$$

where i is replaced by EUR to derive CT_{EUR} . By applying this procedure to the other target currencies, we obtain CT_{USD} , CT_{JPY} , and CT_{GBP} . A positive (negative) net position indicates the presence (absence) of the Swiss franc carry trade activity with the target currency. We cross-analyze them against the backdrop of the structural vector autoregressive (SVAR) framework model devised by [Nishigaki \(2007\)](#).

2.2 The SVAR model

We design a SVAR model with a view to investigating the impacts of the Swiss franc carry trade. Our model follows this equation for each target currency i :

$$y_{i,t} = \phi_{i,1}y_{i,t-1} + \cdots + \phi_{i,p}y_{i,t-p} + A^{-1}Bv_{i,t} \quad (2)$$

⁴This date is used as the reference for the other (daily) variables.

⁵For the USD model, we use the U.S. Dollar Index (ICE Futures U.S.), as it is specified in its contract.

⁶For the other currencies, the values are: 1 000 (U.S. dollar), 12 500 000 (Japanese yen), and 62 500 (British pound).

The first element, $y_{i,t}$, represents a vector of the endogenous variables in our system of equations. The vector of constants is hidden for simplicity's sake. The matrices of coefficients are given by ϕ_i . Matrices A and B are introduced to add structural parameters. In matrix A , we introduce additional contemporaneous endogenous variables to each equation. Matrix B simplifies the error structure. In this sense, the matrix of random disturbances is transformed into $v_{i,t}$, with uncorrelated elements. The SVAR model follows this specification:

$$A\epsilon_{i,t} = Bv_{i,t} \quad (3)$$

Alternatively, in line with [Nishigaki \(2007\)](#), we have:

$$\begin{bmatrix} 1 & 0 & 0 & 0 & 0 & 0 \\ g(VIX, IRD_i) & 1 & 0 & 0 & 0 & 0 \\ g(CT_i, IRD_i) & g(CT_i, VIX) & 1 & 0 & 0 & 0 \\ g(ER_i, IRD_i) & g(ER_i, VIX) & g(ER_i, CT_i) & 1 & 0 & 0 \\ g(FSM_i, IRD_i) & g(FSM_i, VIX) & g(FSM_i, CT_i) & g(FSM_i, ER_i) & 1 & 0 \\ g(SM, IRD_i) & g(SM, VIX) & g(SM, CT_i) & g(SM, ER_i) & g(SM, FSM_i) & 1 \end{bmatrix} \begin{bmatrix} \epsilon_{i,t}^{IRD} \\ \epsilon_{i,t}^{VIX} \\ \epsilon_{i,t}^{CT} \\ \epsilon_{i,t}^{ER} \\ \epsilon_{i,t}^{FSM} \\ \epsilon_{i,t}^{SM} \end{bmatrix} = Bv_{i,t} \quad (4)$$

The choice of employing a lower-triangular contemporaneous-effect matrix A imposes some important restrictions. The identification assumptions used in our SVAR model follow the model proposed by [Nishigaki \(2007\)](#). The first equation represents the interest rate differentials (IRD_i) between Switzerland and the target currencies, which is assumed to be exogenous to the other variables in the model. As a borrowing cost, the interest rate differentials impact the global market sentiment (VIX) in the second equation. The Swiss franc carry trade activity (CT_i) appears in the third equation, depending on both interest rate differentials and market sentiment. An increase in the policy rate in Switzerland would increase the cost of borrowing, causing a decrease in carry trade. Further, a pessimism in the market sentiment would hinder the carry trade ([Brunnermeier, Nagel, and Pedersen 2008](#)).

The fourth equation shows that the exchange rates (ER_i) depend on interest rate differentials, market sentiment, and carry trade. Based on the interest rate parity, exchange rates are impacted by the differences in interest rates across countries/currencies. Following [Grise and Nitschka \(2015\)](#), the Swiss franc depreciates against the target currencies (U.S. dollar,

Japanese yen, and British pound) in response to an increase in the global risk (market sentiment). As for the relation between the foreign exchange and the carry trade activity, a depreciation in the exchange rate is usually associated with a build-up in short positions (Mogford and Pain 2006). In the fifth and sixth equations, we state that the stock market indices (SM and FSM_i) are affected by all the other variables in the model. This financial market linkage is related to the portfolio rebalancing, based on the uncovered equity parity condition (UEP) (Curcuro et al. 2014; Girardin and Salimi Namin 2019).

3 Empirical assessment

In order to estimate the SVAR model, we follow in the footsteps of Chen et al. (2016), who use the approach formulated by Toda and Yamamoto (1995). Amiri and Ventelou (2012) also favor this approach because it reduces the risks of a possible misspecification of the models in the presence of non-stationary variables. Most importantly, by applying this approach, we can capture long-term effects with variables in levels. This is preferable because our proxy of carry trade with CFTC data is related to the trends of this speculative activity.

The application of the Toda-Yamamoto (1995) approach to SVAR models is straightforward. First, we apply unit roots tests to find the integration order (d) of each variable⁷. Second, we estimate a VAR model for each target currency with variables in levels to find the maximum lag length (p)⁸. Third, we estimate the SVAR models with the addition of the lagged ($d + p$) non-stationary variables as exogenous variables. The structure of the exogenous variables of the final estimated models is provided in Table 2.

Table 2: Exogenous variables for each model

Model	VAR lag length (p)	Exogenous variables
USD	2	$VIX_{t-3}, CT_{USD,t-3}, ER_{USD,t-3}, FSM_{USD,t-3}, SM_{t-3}$
EUR	2	$VIX_{t-3}, CT_{EUR,t-3}, ER_{EUR,t-4}, FSM_{EUR,t-3}, SM_{t-3}$
JPY	1	$VIX_{t-2}, CT_{JPY,t-2}, ER_{JPY,t-2}, FSM_{JPY,t-2}, SM_{t-2}$
GBP	1	$VIX_{t-2}, CT_{GBP,t-2}, SM_{t-2}$

⁷See Appendix B for more details and results.

⁸Check Appendix C for a thorough explanation of the model specification.

In the following subsections, we investigate empirically the dual role of the Swiss franc (funding and safe haven currency) with the SVAR model⁹. The determinants of the Swiss franc carry trade activity with each target currency during the period of the negative interest rate policy are explored in Section 3.1. In Section 3.2, we explore how the Swiss franc carry trade impacts the other financial variables in each target currency model. In Section 3.3, we confirm the robustness of our results by analyzing the forecast-error variance decomposition and re-estimating the models using two new configurations (changing the ordering of the variables and excluding the carry trade proxy).

3.1 Determinants of the Swiss franc carry trade in each model

In order to disentangle the funding and safe haven currency effects, we explore the role of the financial variables in explaining the Swiss franc carry trade. Figure 1 presents the cumulative responses of Swiss franc carry trade with each target currency to the impulses of interest rate differentials, market sentiment, exchange rates, foreign stock market indices, and Swiss market index.

While there are no statistical significant results for the interest rate differential shock, two distinct results are found for the impact of a positive shock in the market sentiment on the Swiss franc carry trade. For the EUR model, this shock hinders carry trade. Meanwhile, in the GBP model, evidence for an inverse relationship is found. Both results are found in the long run (20 weeks ahead the initial shock). While the former confirms the role of the Swiss franc as a funding currency, the latter shows evidence for the role as safe haven.

Regarding the exchange rate shock, a Swiss franc depreciation increases the Swiss franc carry trade activity with the all target currencies, except the British pound. This result confirms the carry trade strategy, where the funding currency tends to depreciate while the target currency appreciates. For the USD model, the economic impact is relatively higher than the other exchange rates.

The stock market shocks highlight further the dual role of the Swiss franc. After an increase

⁹The number of lags used (20) was choose based on the stability of the cumulative orthogonalized impulse-response functions.

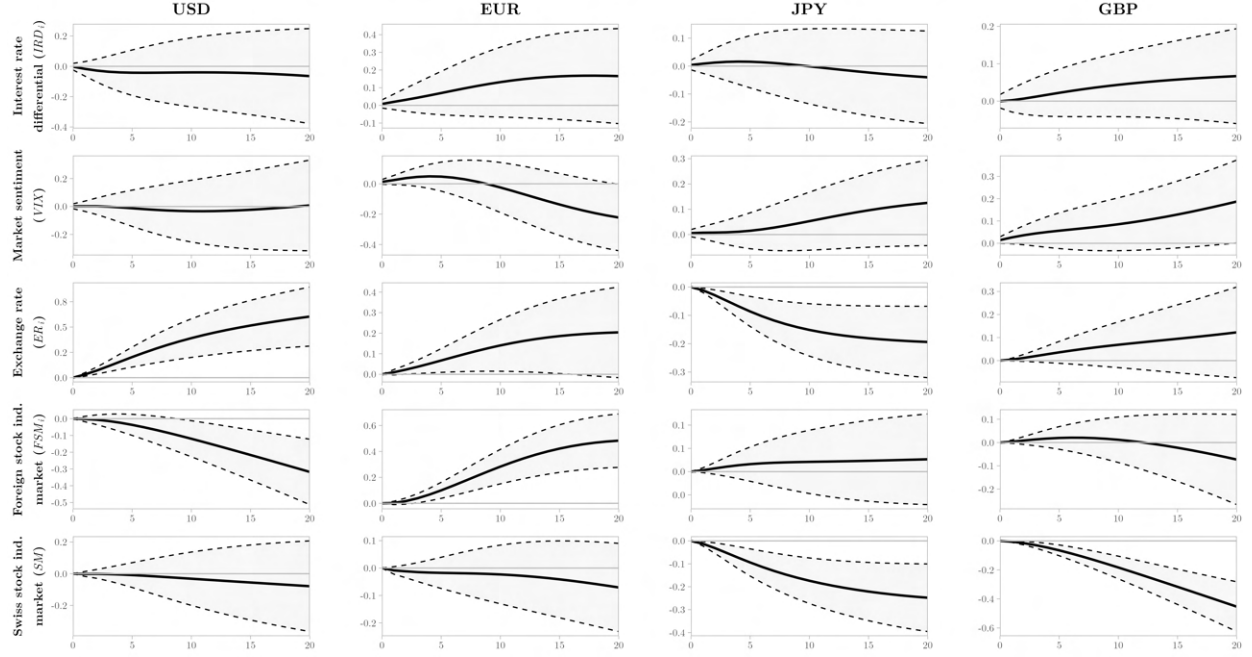


Figure 1: Responses of Swiss franc carry trade (CT_i) to impulses of financial variables in each target currency model
Notes: Solid line is the cumulative orthogonalized impulse-response function. Dashed lines represent the 95% lower and upper bounds. We use bootstrap standard errors.

in the foreign stock market, the USD model shows a negative impact on the Swiss franc carry trade. Moreover, a bearish stock market may generate better gains than engaging in the carry trade. There is also a statistically significant result for the euro model, where a higher stock activity in the euro area leads to a higher Swiss franc carry trade activity. Both results reinforce the funding role of the Swiss franc in the carry trade activity.

Last but not least, innovations in the Swiss stock market prices decrease the Swiss franc carry trade in both JPY and GBP models. This substitution effect needs to be interpreted with caution since the presence of diversified portfolios to diminish risk is common practice in the financial market. Another possible explanation is the search for higher yields in the financial markets, not risk mitigation, as indicated by the uncovered equity parity condition (UEP) (Curcuro et al. 2014). Additionally, the argument about the funding role on the relationship between foreign stock market and carry trade also applies here.

3.2 How does the Swiss franc carry trade impact the financial variables in each model?

Figure 2 illustrates the Swiss franc carry trade shock on the financial variables in each target currency analyzed. With the negative interest rate policy, the SNB is extending the role of the Swiss franc as a funding currency. In this scenario, an increase in the Swiss franc carry trade activity is very plausible.

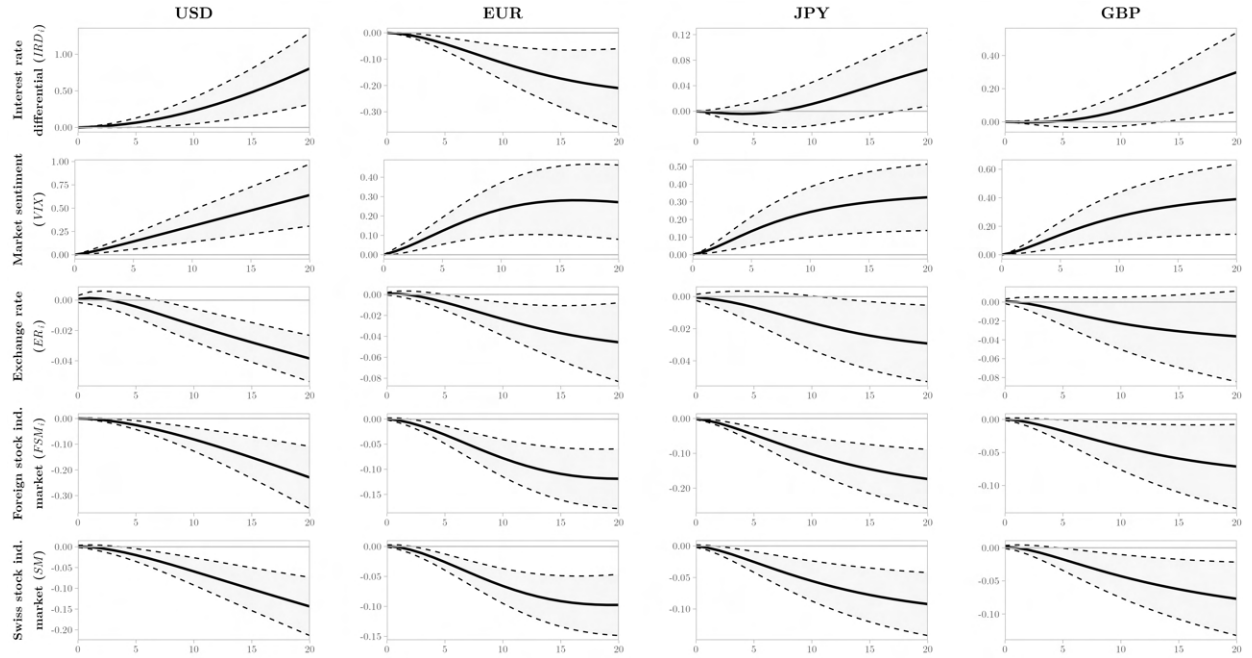


Figure 2: Responses of financial variables to impulses of Swiss franc carry trade (CT_i) in each target currency model

Notes: Solid line is the cumulative orthogonalized impulse–response function. Dashed lines represent the 95% lower and upper bounds. We use bootstrap standard errors.

While a positive shock on Swiss franc carry trade increases market-driven interest rate differentials for the USD, JPY and GBP models, there is a negative impact on the EUR model. This divergent result may be explained by the different roles of the Swiss franc. While the negative relationship may be related to the safe haven role, the positive impact shows evidence of the funding role.

Following, all models show evidence for a higher market sentiment with a positive shock in the carry trade proxy. By increasing their speculative positions, hedge funds foment global risk, notably with their leveraged activity. In this sense, there is evidence that more speculative

Swiss franc activity boosts market risk around the world.

Particularly, we find evidence for the failure of the UIP in the USD, EUR and JPY models. The Swiss franc carry trade shock leads to a depreciation of both U.S. dollar and euro¹⁰ (appreciation of the Swiss franc) and to an appreciation of the Japanese yen (depreciation of the Swiss franc). This inverse relationship found in the JPY model, when compared to the results in USD and EUR models, may be related to the different international status of each currency. [Hossfeld and MacDonald \(2015\)](#) classify the euro as a hedge currency, while classifying the Swiss franc, the U.S. dollar and the British pound as safe haven currencies and the Japanese yen as a “carry funding vehicle.” Therefore, while the results in the USD and EUR models may be related to the Swiss franc as a funding currency, the safe haven role appears in the JPY model.

Conversely, there is a common result for all models on the impacts of foreign and Swiss stock markets after a positive carry trade shock. These results reveal that institutional investors can move asset prices. Accordingly, this finding resonates with the yen carry trade ([Fong 2013](#)). For all models, bearish stock markets result from an increased Swiss franc carry trade activity. More importantly, these results imply that a higher Swiss franc speculative activity is problematic for the financial markets. Jointly, the responses of the market sentiment and both stock market indices indicate a higher systemic risk with the increased Swiss franc carry trade activity. This is also consistent with the adverse side effects of the negative interest rate policy, which have been highlighted by a number of authors (see [Rossi 2019](#)).

3.3 Robustness checks

Most of the results found on the impulse-response functions are confirmed by the Granger causality tests. As shown by Table 3, all variables Granger cause the Swiss franc carry trade in the USD and GBP models. Although not statistically significant in the impulse-response function, the Granger causality test shows that the interest rate differential do impact the

¹⁰We do not take into account the EUR/CHF peg because it ended in January 2015, while the initial date of the negative interest rate policy in Switzerland is December 18, 2014. [Accominotti et al. \(2019\)](#) investigate the impact of currency regime shifting on the carry trade activity. They suggest that the fixed-to-floating regime switch by the SNB created carry trade losses, starting a global fight-to-safety phenomenon.

carry trade in both USD and GBP models. Some caution regarding the EUR model results is needed since there is no evidence of Granger causality among the variables. In a significant manner, strong evidence is found on the Granger causality of the carry trade proxy on market sentiment and stock market indices in all target currencies (see Table 4). Regarding the UIP failure, only the EUR model shows a statistically significant result.

Table 3: Granger causality tests for the direction $All\ variables \rightarrow CT_i$, p-values

	CT_{USD}	CT_{EUR}	CT_{JPY}	CT_{GBP}
IRD_i	0.0483**	0.7511	0.9286	0.0558*
VIX	0.9823	0.2604	0.4740	0.5320
ER_i	0.0015***	0.1818	0.0241**	0.0002***
FSM_i	0.8945	0.3664	0.1994	0.0034***
SM	0.9624	0.3845	0.0787*	0.2506
$All\ variables$	0.0311**	0.5404	0.3112	0.0097***

Notes: Null hypothesis is that $All\ variables$ ‘does not’ Granger-cause CT_i . ‘***’, ‘**’, and ‘*’ denote statistical significance at 1%, 5%, and 10%, respectively.

Table 4: Granger causality tests for the direction $CT_i \rightarrow All\ variables$, p-values

	IRD_i	VIX	ER_i	FSM_i	SM
CT_{USD}	0.1881	0.0217**	0.3625	0.0656*	0.0442**
CT_{EUR}	0.0810*	0.0600*	0.0648*	0.0281**	0.0169**
CT_{JPY}	0.5202	0.0395**	0.7120	0.0017***	0.0255**
CT_{GBP}	0.8517	0.0300**	0.1296	0.0931*	0.0442**

Notes: Null hypothesis is that CT_i ‘does not’ Granger-cause $All\ variables$. ‘***’, ‘**’, and ‘*’ denote statistical significance at 1%, 5%, and 10%, respectively.

With the analysis of the structural forecast-error variance decomposition, we can determine the extent to which each variable may account for the other variable fluctuation. Table 5 displays the results of the variance decomposition for the Swiss franc carry trade (CT_i).¹¹ Concerning the financial variables shocks (“Response = CT_i ”), we find that the Swiss franc carry trade is sensitive to the disturbances in the following equations: (i) exchange rate (ER_i) in the USD model, (ii) foreign stock market index (FSM_i) in the EUR model and (iii) Swiss stock market index (SM) in the GBP model. Alike, the decomposition of the impulses of Swiss franc carry trade is presented in Table 5 (“Impulse = CT_i ”). For the USD model, results reinforce the argument on the increased systemic risk (VIX) and the UIP failure

¹¹In Table 5, Figures 1 and 2 are linked to “Response = CT_i ” and “Impulse = CT_i ,” respectively.

(ER_i). Likewise, the linkage between the Swiss carry trade (CT_i) and stock market indices (FSM_i and SM) is well present in the USD, EUR and JPY models.

Table 5: Structural forecast-error variance decomposition (SFEVD) for each model, in percent

Steps	Response = CT_i						Impulse = CT_i				
	IRD_i	VIX	Impulse =				IRD_i	VIX	Response =		
			CT_i	ER_i	FSM_i	SM			ER_i	FSM_i	SM
USD model											
4	0.63	0.02	92.36	6.85	0.13	0.01	0.78	4.04	0.80	2.76	2.50
8	0.43	0.14	86.69	11.88	0.80	0.06	2.95	9.83	5.75	10.75	10.35
12	0.36	0.15	83.78	13.82	1.76	0.13	6.48	14.52	10.78	18.53	18.34
16	0.34	0.16	81.98	14.52	2.81	0.19	10.55	18.17	14.18	24.26	24.17
20	0.36	0.26	80.50	14.76	3.87	0.25	14.61	21.00	16.64	28.10	28.00
EUR model											
4	1.22	1.33	94.38	1.13	1.71	0.23	2.08	3.03	1.67	3.36	4.07
8	2.02	1.21	85.32	2.41	8.86	0.17	7.00	7.47	6.31	11.67	14.46
12	2.45	3.16	76.00	3.12	15.11	0.16	9.25	9.36	8.20	17.91	20.80
16	2.47	5.67	70.54	3.28	17.81	0.23	9.23	9.44	7.88	19.84	21.67
20	2.38	7.15	68.72	3.24	18.12	0.39	8.30	9.16	6.79	19.34	20.11
JPY model											
4	0.18	0.11	94.22	2.47	0.12	2.90	0.15	3.10	0.66	6.39	3.71
8	0.19	0.35	87.23	5.41	0.15	6.65	0.28	6.33	2.19	11.52	8.40
12	0.36	1.11	83.86	6.28	0.15	8.25	1.54	7.42	3.58	13.42	10.62
16	0.54	1.79	82.24	6.43	0.15	8.86	3.30	7.74	4.36	14.18	11.56
20	0.66	2.15	81.52	6.44	0.15	9.08	4.68	7.83	4.70	14.50	11.97
GBP model											
4	0.16	1.59	96.64	0.42	0.19	1.00	0.04	3.45	1.13	1.57	2.09
8	0.43	1.78	91.12	1.04	0.23	5.40	0.92	7.33	2.71	3.72	5.59
12	0.54	2.06	84.30	1.32	0.35	11.43	2.99	8.72	3.11	4.71	7.25
16	0.56	2.66	77.30	1.46	0.82	17.19	4.96	8.99	2.99	4.98	7.71
20	0.55	3.55	70.68	1.58	1.59	22.05	6.38	8.85	2.76	4.90	7.62

In relation to other robustness checks, four procedures are computed, as presented in Appendix D. First, the models are estimated using a new ordering of variables, according to the Granger causality tests (Figures D.1 and D.2). Second, the estimations obtained with the Toda-Yamamoto approach are compared to non-stationary variables (Figures D.3 and D.4). Third, time dummies are added to verify the accuracy of the estimated models. Last but not least, we exclude the Swiss franc carry trade in each model to verify the sensitivity of the results (Figures D.5, D.6, D.7 and D.8). Overall, there is no significant change, showing our results are robust to different modeling configurations.

4 Main conclusions and policy implications

This paper takes a novel approach to examine the Swiss franc carry trade during the period of negative interest rate policy in Switzerland. Using data from hedge fund positions (i.e. volumes) in the U.S. futures market, we elaborated a new construct of Swiss franc carry trade with four target currencies (U.S. dollar, euro, Japanese yen, and British pound). Each target currency is modeled individually to investigate the behavior of the Swiss franc carry trade. More specifically, we use the formulated model to disentangle the funding currency and safe haven effects embedded in our carry trade proxy.

Our results are uncomplicated to summarize. First, our carry trade proxy captures the funding currency effect of the Swiss franc. In the analysis of the determinants of the Swiss franc carry trade activity, we find that a higher market sentiment leads to an increase in the Swiss franc carry trade in the EUR model, (ii) the foreign stock market index in the EUR model shocks positively the Swiss franc carry trade and (iii) the uncovered interest rate parity (UIP) does not hold for the USD, EUR and JPY models. With negative policy interest rates, the SNB is clearly creating an incentive to foster the Swiss franc as a funding currency in the carry trade strategy. Thus, rather fulfilling its goal of boosting the Swiss economy, the SNB creates some negative international spillovers.

Second, we also find evidence for the Swiss currency acting as a safe haven currency. The Swiss franc carry trade proxy responds: (i) positively to an increase in the market sentiment in the GBP model and to a Swiss franc depreciation in the USD, EUR and JPY models and (ii) in an inverse manner with the foreign stock market index in the USD model and with the Swiss stock market index in the JPY and GBP models.

Third, we document the violation of the UIP in the USD, EUR and JPY models. By seeking to promote the international competitiveness of Swiss firms and to avoid deflation for the whole economy, the SNB is very keen to depreciate the Swiss franc in relation to other currencies, as seen with the euro peg. Also, with increased funding promoted by the SNB's negative interest rate policy, hedge funds are exploring the invalidity of the UIP to profit.

Fourth, our results suggest that the SNB's negative interest rate policy augments the systemic

risk. Evidence for this externality is shown by the linkages between the Swiss franc carry trade activity and financial markets indicators. With all four target currencies, an increased Swiss franc carry trade activity increments the global risk and contracts stock market prices (foreign and Swiss stock market indices). Moreover, we also contribute to the literature of institutional investors by documenting that hedge funds are able to move asset prices.

More importantly, our results resonate to increased systemic risk with higher speculative activity in Swiss franc. In this sense, our findings are consistent with the existing literature stressing the negative impact of carry trade activities on global financial and monetary risk. Conversely, we should remember that central banks' monetary policies are also more likely to influence carry trade activities when these monetary policies are not coordinated. The SNB's actual negative interest rates policy may have created perverse incentives for more speculation on the Swiss financial market ([Rossi 2019](#)). This finding vindicates the view that the SNB should strengthen its remit over asset price regulation in Switzerland. This entails that the SNB would benefit from consolidating its macro-prudential supervision, by setting up new instruments to respond to changing financial variables, through new types of monetary and financial condition indices for instance ([Guillaumin and Vallet 2017](#)).

But more broadly, far-sweeping measures enforced by central banks are needed to avert the risk of financial turmoil and to restore confidence in the global economy. Notably, this is the case with the COVID-crisis that questions the future of currency carry trade activities. Indeed, on the one hand, massive asset-purchasing programs, targeting government bonds in particular, participate in the reduction of the "safe asset trap" between bond yields ([Reviglio 2020](#)). This is likely to improve global stability through the increase of international supply of safe assets – warranted by central banks – with respect to the rise in global demand in search for a flight to safety and liquidity. Specifically, these measures could reduce the demand for safe haven currencies, and then carry trade activities. On the other hand, if future central banks' futures measures are non-coordinated or non-cooperative, they could entail an increase in exchange rates movements and financial turmoil. In the context of uncertainty characterizing the COVID-crisis, this could provide even further incentives to the Swiss franc carry trade activities.

References

- Accominotti, Olivier, Jason Cen, David Chambers, and Ian W. Marsh. 2019. “Currency Regimes and the Carry Trade.” *Journal of Financial and Quantitative Analysis* 54 (5): 2233–60.
- Adrangi, Bahram, and Arjun Chatruth. 1998. “Futures Commitments and Exchange Rate Volatility.” *Journal of Business Finance & Accounting* 25 (3): 501–20.
- Agrippino, Silvia Miranda, and Helene Rey. 2013. “Funding Flows and Credit in Carry Trade Economies.” In *Liquidity and Funding Markets*, edited by Alexandra Heath, Matthew Lilley, and Mark Manning. Reserve Bank of Australia. <https://ho.website.rba.gov.au/publications/confs/2013/pdf/mirandaagrippino-rey.pdf>.
- Amiri, Arshia, and Bruno Ventelou. 2012. “Granger Causality Between Total Expenditure on Health and GDP in OECD: Evidence from the Toda–Yamamoto Approach.” *Economics Letters* 116 (3): 541–44.
- Bank for International Settlements. 2015. *Currency Carry Trades in Latin America*. BIS Papers 81. Bank for International Settlements.
- Breedon, Francis, Dagfinn Rime, and Paolo Vitale. 2016. “Carry Trades, Order Flow, and the Forward Bias Puzzle.” *Journal of Money, Credit and Banking* 48 (6): 1113–34.
- Brunnermeier, Markus K., Stefan Nagel, and Lasse H. Pedersen. 2008. “Carry Trades and Currency Crashes.” *NBER Macroeconomics Annual* 23 (January): 313–48.
- Burnside, Craig, Martin Eichenbaum, and Sergio Rebelo. 2007. “The Returns to Currency Speculation in Emerging Markets.” *American Economic Review* 97 (2): 333–38.
- Cenedese, Gino, Lucio Sarno, and Ilias Tsiakas. 2014. “Foreign Exchange Risk and the Predictability of Carry Trade Returns.” *Journal of Banking & Finance* 42 (May): 302–13.
- Chalupa, Karel V. 1982. “Foreign Currency Futures: Reducing Foreign Exchange Risk.” *Economic Perspectives*, 3–11.
- Chang, Eric C., J. Michael Pinegar, and Barry Schachter. 1997. “Interday Variations in Volume, Variance and Participation of Large Speculators.” *Journal of Banking & Finance*

21 (6): 797–810.

- Chen, Hao, Hua Liao, Bao-Jun Tang, and Yi-Ming Wei. 2016. “Impacts of OPEC’s Political Risk on the International Crude Oil Prices: An Empirical Analysis Based on the SVAR Models.” *Energy Economics* 57 (June): 42–49.
- Clarida, Richard, Josh Davis, and Niels Pedersen. 2009. “Currency Carry Trade Regimes: Beyond the Fama Regression.” *Journal of International Money and Finance* 28 (8): 1375–89.
- Clemente, Jesús, Antonio Montañés, and Marcelo Reyes. 1998. “Testing for a Unit Root in Variables with a Double Change in the Mean.” *Economics Letters* 59 (2): 175–82.
- Commodity Futures Trading Commission. 2020. “Commitments of Traders (COT) Reports Descriptions.” 2020. <https://www.cftc.gov/MarketReports/CommitmentsofTraders/index.htm>.
- Curcuru, Stephanie E., Charles P. Thomas, Francis E. Warnock, and Jon Wongswan. 2014. “Uncovered Equity Parity and Rebalancing in International Portfolios.” *Journal of International Money and Finance* 47 (October): 86–99.
- Curcuru, Stephanie E., Clara Vega, and Jasper Hoek. 2011. “Measuring Carry Trade Activity.” In *IFC Bulletins Chapters*, 34:436–53. Bank for International Settlements.
- Darvas, Zsolt. 2009. “Leveraged Carry Trade Portfolios.” *Journal of Banking & Finance* 33 (5): 944–57.
- Dodd, Randall, and Stephany Griffith-Jones. 2007. “Brazil’s Derivatives Markets: Hedging, Central Bank Intervention and Regulation.” Series Históricas 20. Naciones Unidas Comisión Económica para América Latina y el Caribe (CEPAL).
- Donnelly, Brent. 2019. *The Art of Currency Trading: A Professional’s Guide to the Foreign Exchange Market*. Wiley Trading. Hoboken: Wiley.
- Doskov, Nikolay, and Laurens Swinkels. 2015. “Empirical Evidence on the Currency Carry Trade, 1900–2012.” *Journal of International Money and Finance* 51 (March): 370–89.
- Dupuy, Philippe, Jessica James, and Ian W. Marsh. 2021. “Attractive and Non-Attractive

- Currencies.” *Journal of International Money and Finance* 110 (February): 102–253.
- Fama, Eugene F. 1984. “Forward and Spot Exchange Rates.” *Journal of Monetary Economics*, Journal of monetary economics, 14 (3): 319–38.
- Farhi, Emmanuel, and Xavier Gabaix. 2016. “Rare Disasters and Exchange Rates.” *The Quarterly Journal of Economics* 131 (1): 1–52.
- Fong, Wai Mun. 2013. “Footprints in the Market: Hedge Funds and the Carry Trade.” *Journal of International Money and Finance* 33 (March): 41–59.
- Fritz, Barbara, and Daniela Prates. 2014. “The New IMF Approach to Capital Account Management and Its Blind Spots: Lessons from Brazil and South Korea.” *International Review of Applied Economics* 28 (2): 210–39.
- Galati, Gabriele, Alexandra Heath, and Patrick McGuire. 2007. “Evidence of Carry Trade Activity.” *BIS Quarterly Review*.
- Girardin, Eric, and Fatemeh Salimi Namin. 2019. “The January Effect in the Foreign Exchange Market: Evidence for Seasonal Equity Carry Trades.” *Economic Modelling* 81 (September): 422–39.
- Goda, Thomas, and Jan Priewe. 2019. “Determinants of Real Exchange Rate Movements in 15 Emerging Market Economies.” *Institute for International Political Economy (IPE) Working Papers* 128 (2019).
- Goldstein, Henry N. 1983. “Foreign Currency Futures: Some Further Aspects.” *Economic Perspectives*, 3–13.
- Grisse, Christian, and Thomas Nitschka. 2015. “On Financial Risk and the Safe Haven Characteristics of Swiss Franc Exchange Rates.” *Journal of Empirical Finance* 32 (June): 153–64.
- Gubler, Matthias. 2014. “Carry Trade Activities: A Multivariate Threshold Model Analysis.” Working Paper 2014-06. Swiss National Bank.
- Guillaumin, Cyriac, and Guillaume Vallet. 2012. “La Suisse et la Zone Euro : Votre Monnaie, Notre Problème ? La Possibilité d’un Ancrage de Jure.” *Revue d’Economie Politique* 122

(5): 629–55.

- . 2017. “Forecasting Inflation in Switzerland After the Crisis: The Usefulness of a Monetary and Financial Condition Index.” *Cahier de Recherche Du Creg* 2017.
- Hameed, Allaudeen, and Andrew K. Rose. 2018. “Exchange Rate Behaviour with Negative Interest Rates: Some Early Negative Observations.” *Pacific Economic Review* 23 (1): 27–42.
- Hartzmark, Michael L. 1987. “Returns to Individual Traders of Futures: Aggregate Results.” *Journal of Political Economy* 95 (6): 1292–1306.
- Hasselgren, Anton, Jarkko Peltomäki, and Michael Graham. 2020. “Speculator Activity and the Cross-Asset Predictability of FX Returns.” *International Review of Financial Analysis* 72 (November): 101561.
- Hossfeld, Oliver, and Ronald MacDonald. 2015. “Carry Funding and Safe Haven Currencies: A Threshold Regression Approach.” *Journal of International Money and Finance* 59 (December): 185–202.
- Houthakker, H. S. 1957. “Can Speculators Forecast Prices?” *The Review of Economics and Statistics* 39 (2): 143–51.
- Jochum, Christian, and Marcel R. Savioz. 2005. “A Strange Animal? The Swiss Franc Exchange Rate as a ‘Random Walk’.” *Swiss Journal of Economics and Statistics (SJES)* 141 (December): 527–53.
- Jordan, Thomas. 2016. “Monetary Policy Using Negative Interest Rates: A Status Report.” Speech. https://www.snb.ch/en/mmr/speeches/id/ref_20161024_tjn/source/ref_20161024_tjn.en.pdf.
- Kang, Wenjin, K. Geert Rouwenhorst, and Ke Tang. 2020. “A Tale of Two Premiums: The Role of Hedgers and Speculators in Commodity Futures Markets.” *The Journal of Finance* 75 (1): 377–417.
- Kay, Benjamin S. 2018. “Implications of Central Banks’ Negative Policy Rates on Financial Stability.” *Journal of Financial Economic Policy* 10 (2): 310–20.

- Klitgaard, Thomas, and Laura Weir. 2004. “Exchange Rate Changes and Net Positions of Speculators in the Futures Market.” *Economic Policy Review*, 17–28.
- Kugler, Peter, and Beatrice Weder. 2002. “The Puzzle of the Swiss Interest Rate Island: Stylized Facts and a New Interpretation.” *Aussenwirtschaft* 57 (1): 49–64.
- Menkhoff, Lukas, Lucio Sarno, Maik Schmeling, and Andreas Schrimpf. 2012. “Carry Trades and Global Foreign Exchange Volatility.” *The Journal of Finance* 67 (2): 681–718.
- Mogford, Caroline, and Darren Pain. 2006. “The Information Content of Aggregate Data on Financial Futures Positions.” *Bank of England Quarterly Bulletin*, 9.
- Mulligan, Nicholas, and Daan Steenkamp. 2018. “Reassessing the Information Content of the Commitments of Traders Positioning Data for Exchange Rate Changes.” AN2018/03. Reserve Bank of New Zealand.
- Nishigaki, Hideki. 2007. “Relationship Between the Yen Carry Trade and the Related Financial Variables.” *Economics Bulletin* 13 (2): 1–7.
- Perlin, Marcelo. 2020. *BatchGetSymbols: Downloads and Organizes Financial Data for Multiple Tickers*. <https://CRAN.R-project.org/package=BatchGetSymbols>.
- Prates, Daniela Magalhães, and Luiz Fernando De Paula. 2017. “Capital Account Regulation in Brazil: An Assessment of the 2009-2013 Period.” *Brazilian Journal of Political Economy* 37 (1): 108–29.
- Ranaldo, Angelo, and Paul Söderlind. 2010. “Safe Haven Currencies.” *Review of Finance* 14 (3): 385–407.
- Reviglio, Edoardo. 2020. “Covid-19 and the ‘Safe Asset Trap’.” OMFIF. <https://www.omfif.org/2020/08/covid-19-and-the-safe-asset-trap/>.
- Rossi, Sergio. 2019. “The Dangerous Ineffectiveness of Negative Interest Rates: The Case of Switzerland.” *Review of Keynesian Economics* 7 (2): 220–32.
- Ryan, Jeffrey A., and Joshua M. Ulrich. 2020. *Quantmod: Quantitative Financial Modelling Framework*. <https://CRAN.R-project.org/package=quantmod>.

- Spronk, Richard, Willem F. C. Verschoor, and Remco C. J. Zwinkels. 2013. “Carry Trade and Foreign Exchange Rate Puzzles.” *European Economic Review* 60 (May): 17–31.
- Toda, Hiro Y., and Taku Yamamoto. 1995. “Statistical Inference in Vector Autoregressions with Possibly Integrated Processes.” *Journal of Econometrics* 66 (1): 225–50.
- Tomio, Bruno Thiago. 2020. “Carry Trade in Developing and Developed Countries: A Granger Causality Analysis with the Toda-Yamamoto Approach.” *Economics Bulletin* 40 (3): 2154–64.
- Vallet, Guillaume. 2016. “The Role of the Swiss Franc in Switzerland’s European Stance.” *Research in International Business and Finance* 38 (September): 35–44.

Appendixes

A Descriptive statistics and actual evolution of the variables

Table A.1 shows the descriptive statistics of our data, while the actual evolution is presented in Figure A.1.

Table A.1: Descriptive statistics

	Obs.	Mean	Std. Dev.	Variance	Skewness	Min.	Max.
CT_{USD}	310	0.06	0.35	0.12	-0.01	-0.73	0.83
CT_{EUR}	310	0.06	0.34	0.11	-0.42	-0.67	0.66
CT_{JPY}	310	0.04	0.32	0.10	-0.42	-0.64	0.65
CT_{GBP}	310	0.05	0.32	0.10	-0.53	-0.67	0.66
IRD_{USD}	310	-1.53	0.82	0.68	-0.37	-2.98	-0.07
IRD_{EUR}	310	-0.13	0.17	0.03	-0.99	-0.59	0.17
IRD_{JPY}	310	-0.49	0.10	0.01	0.65	-0.77	0.00
IRD_{GBP}	310	-0.96	0.24	0.06	0.44	-1.43	-0.42
ER_{USD}	310	-0.03	0.03	0.00	-0.90	-0.14	0.03
ER_{EUR}	310	0.10	0.04	0.00	0.44	0.01	0.18
ER_{JPY}	310	4.74	0.05	0.00	1.01	4.64	4.91
ER_{GBP}	310	0.27	0.07	0.01	0.63	0.14	0.44
FSM_{USD}	310	7.83	0.17	0.03	0.08	7.52	8.20
FSM_{EUR}	310	6.88	0.09	0.01	-0.25	6.65	7.07
FSM_{JPY}	310	9.92	0.12	0.01	-0.42	9.64	10.17
FSM_{GBP}	310	8.84	0.09	0.01	-0.65	8.57	8.97
SM	310	9.11	0.08	0.01	0.14	8.93	9.32
VIX	310	2.79	0.36	0.13	1.13	2.24	4.33

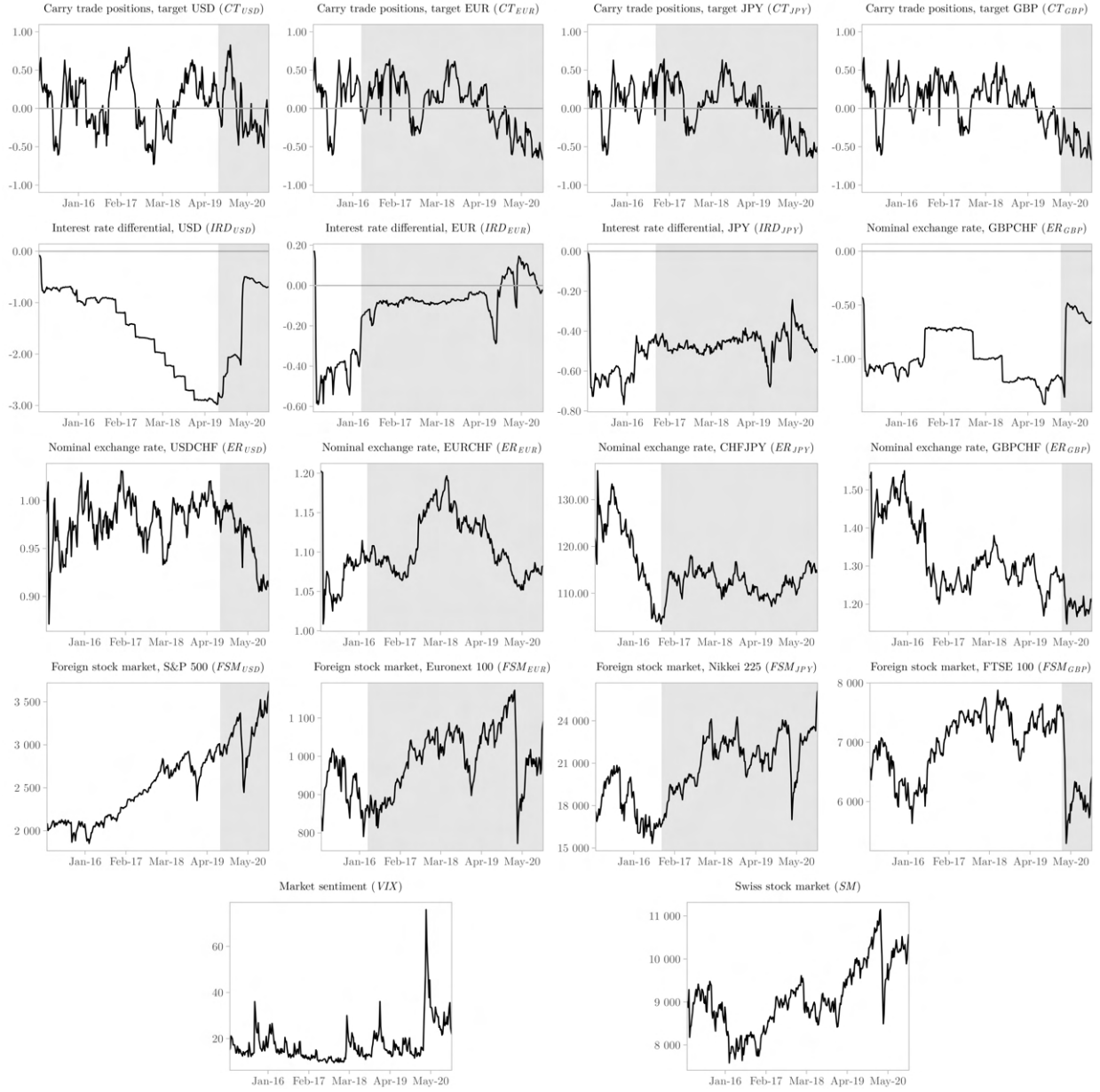


Figure A.1: Actual evolution of the variables

Notes: The shaded areas correspond to the time dummies, with the corresponding model between brackets: [USD] *USME*, monetary easing in the U.S. (8/6/2019-11/24/2020), [EUR] *ZLBEUR*, policy interest rate equal to zero for the euro (3/22/2016-11/24/2020), [JPY] *NIJPY*, negative policy interest rate in Japan (9/27/2016-11/24/2020), and [GBP] *BREXIT*, effective date of the withdrawal of the United Kingdom from the European Union (2/4/2020-11/24/2020).

B Unit root tests

We opt for the [Clemente, Montañés, and Reyes \(1998\)](#) test with the innovational outlier (IO) model. This test with two structural breaks and unknown breakpoints fits well our data with means shifting gradually. Table [B.1](#) presents the results of the unit root tests.

Table B.1: Clemente-Montañés-Reyes unit-root tests, innovational outlier (IO) model

	Levels		First-differences		Second-differences		I(<i>d</i>)
	$(\rho - 1)$	t-stat	$(\rho - 1)$	t-stat	$(\rho - 1)$	t-stat	
CT_{USD}	-0.1454	-4.7877	-1.4772	-5.5578			I(1)
CT_{EUR}	-0.1446	-4.7119	-1.2112	-23.9101			I(1)
CT_{JPY}	-0.1722	-4.6392	-2.0116	-7.1027			I(1)
CT_{GBP}	-0.171	-3.8966	-2.3402	-8.0398			I(1)
ER_{USD}	-0.176	-4.6953	-1.7483	-10.2286			I(1)
ER_{EUR}	-0.0932	-4.6791	-0.911	-4.8282	-6.4545	-8.6273	I(2)
ER_{JPY}	-0.1151	-4.2935	-1.6916	-10.8537			I(1)
ER_{GBP}	-0.1701	-5.9869					I(0)
IRD_{USD}	-0.063	-5.5146					I(0)
IRD_{EUR}	-0.2084	-7.3311					I(0)
IRD_{JPY}	-0.1981	-8.4496					I(0)
IRD_{GBP}	-0.1263	-7.0012					I(0)
FSM_{USD}	-0.0563	-3.3056	-1.3167	-8.5508			I(1)
FSM_{EUR}	-0.1522	-5.0798	-1.2607	-17.5674			I(1)
FSM_{JPY}	-0.0818	-4.0181	-1.5405	-7.3962			I(1)
FSM_{GBP}	-0.1592	-6.4903					I(0)
VIX	-0.1983	-5.0078	-1.7286	-10.846			I(1)
SM	-0.0892	-3.8995	-1.5127	-11.4007			I(1)

Note: Test for stationarity in the presence of a double structural break in the series, which considers the null hypothesis that $(\rho - 1)$ is different from zero. Critical t-stat value ($T = 100, \infty, 5\%$ sig.) = -5.19 ([Clemente, Montañés, and Reyes 1998](#), Table 1).

C Model specification

Variables that are not stationary in levels must be added as lagged exogenous variables in the SVAR model. The number of lags of these variables is specified by d plus p . In doing so, we are proceeding with a modified Wald test (MWald test). Therefore, as asserted by [Toda and Yamamoto \(1995, 226\)](#), “it is clearly desirable to have a testing procedure which is robust to the integration and cointegration properties of the process so as to avoid the possible pretest biases.”

In order to obtain the lag length p of the SVAR model, the Lagrange-multiplier (LM) test for residual autocorrelation is used (see Table C.1). The correct lag order cannot be achieved by merely verifying the optimal lag length. The lag order p must not have autocorrelated residuals.

Table C.1: Lagrange-multiplier (LM) test for residual autocorrelation, p-values

Lags	USD	EUR	JPY	GBP
1	0.0488	0.0067	0.6981*	0.9177*
2	0.5307*	0.2189*	0.1281	0.8501
3	0.8341	0.0013	0.0001	0.9650
4	0.5428	0.0013	0.0004	0.1945
5	0.0000	0.0000	0.0000	0.0000
6	0.4553	0.0352	0.2848	0.5139
7	0.4271	0.4844	0.2619	0.6770
8	0.2162	0.1184	0.8884	0.3670
9	0.9539	0.6668	0.2759	0.9249
10	0.5171	0.5546	0.8636	0.9915

Note: The null hypothesis of the test is that there is no autocorrelation at the specific lag. Number of lags used is marked with an asterisk(*).

D Robustness checks¹²

In the first robustness check, we follow the results of the Granger causality tests¹³ to re-estimate the models with a new ordering of the variables:

- 1) USD model, $VIX \rightarrow SM \rightarrow FSM_{USD} \rightarrow ER_{USD} \rightarrow IRD_{USD} \rightarrow CT_{USD}$;
- 2) EUR model, $VIX \rightarrow FSM_{EUR} \rightarrow SM \rightarrow ER_{EUR} \rightarrow IRD_{EUR} \rightarrow CT_{EUR}$;
- 3) JPY model, $IRD_{JPY} \rightarrow VIX \rightarrow SM \rightarrow CT_{JPY} \rightarrow ER_{JPY} \rightarrow FSM_{JPY}$;
- 4) GBP model, $VIX \rightarrow FSM_{GBP} \rightarrow IRD_{GBP} \rightarrow SM \rightarrow CT_{GBP} \rightarrow ER_{GBP}$.

As shown by Figures D.1 to D.2, results do not change significantly.

Second, we compare the results obtained with the Toda-Yamamoto approach with the results from non-stationary models. In order to estimate the latter, the lagged variables used in the Toda-Yamamoto approach are excluded. Figures D.3 and D.4 present this comparison, which shows that results change significantly.

Third, time dummies are included. In order to improve the accuracy of the estimated results, one time dummy is added in each model to take into account key events: (1) *USME*, monetary easing in the U.S. (8/6/2019-11/24/2020), (2) *ZLBEUR*, policy interest rate equal to zero for the euro (3/22/2016-11/24/2020), (3) *NIJPY*, negative policy interest rate in Japan (9/27/2016-11/24/2020), and (4) *BREXIT*, effective date of the withdrawal of the United Kingdom from the European Union (2/4/2020-11/24/2020). Figures D.9 and D.10 present the results for all models, which do not change markedly.

Fourth, we re-estimate the models without carry trade (CT_i). The following figures present these results for the USD (D.5), EUR (D.6), JPY (D.7), and GBP (D.8), with the original estimates (including CT_i) for comparison. The results reinforce the robustness of the model.

¹²Regarding Figures D.1 to D.10: (i) solid lines are the cumulative orthogonalized impulse-response functions, (ii) dashed lines show the 95% lower and upper bounds, and (iii) new results are in red and results from Section 3 are in black. We estimate the models with bootstrap standard errors.

¹³Full results can be obtained upon request.

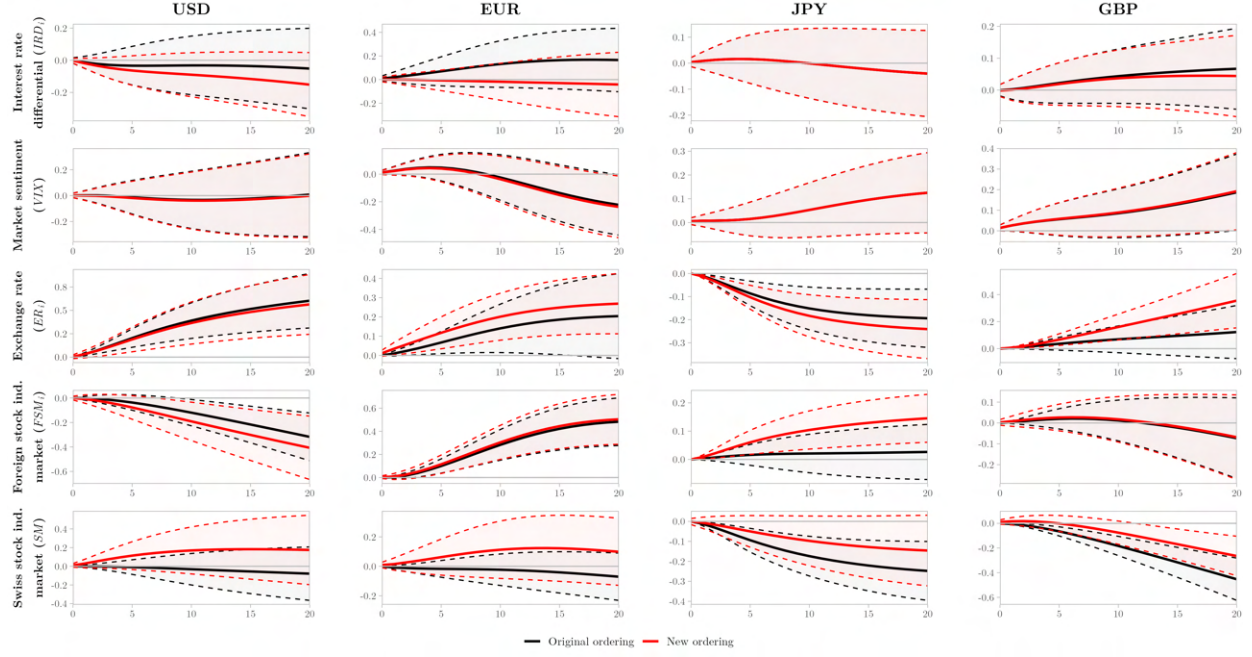


Figure D.1: Responses of Swiss franc carry trade (CT_i) to impulses of financial variables in each target currency model with a new ordering of variables

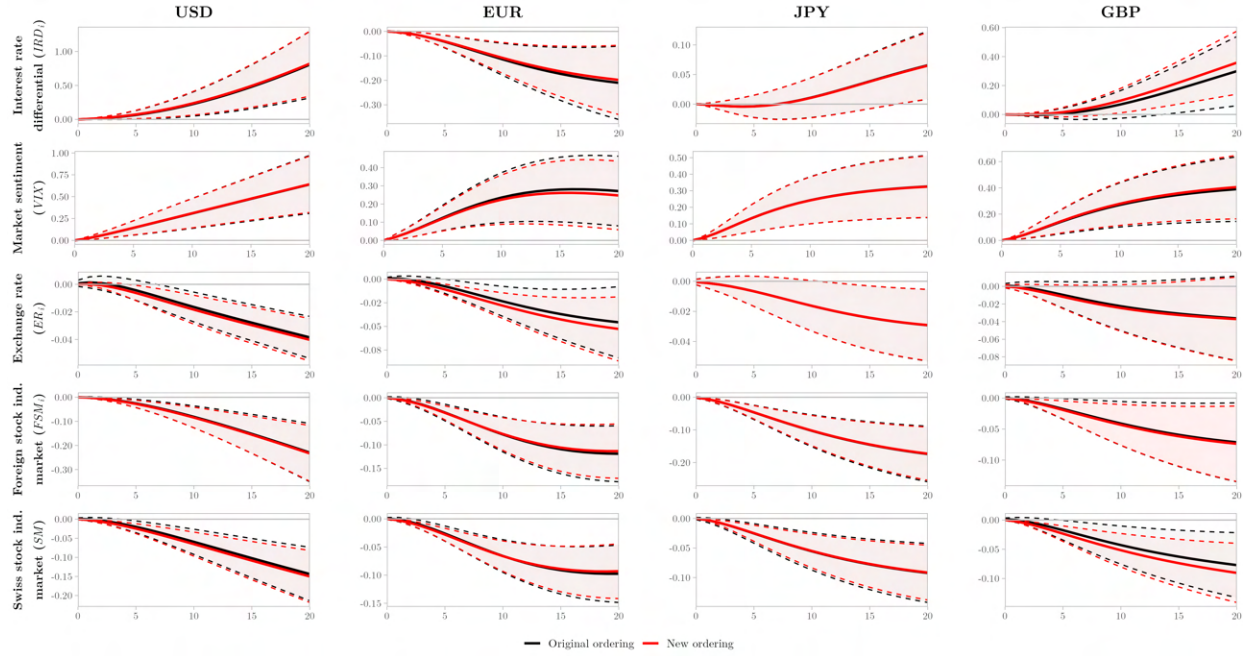


Figure D.2: Responses of financial variables to impulses of Swiss franc carry trade (CT_i) in each target currency model with a new ordering of variables

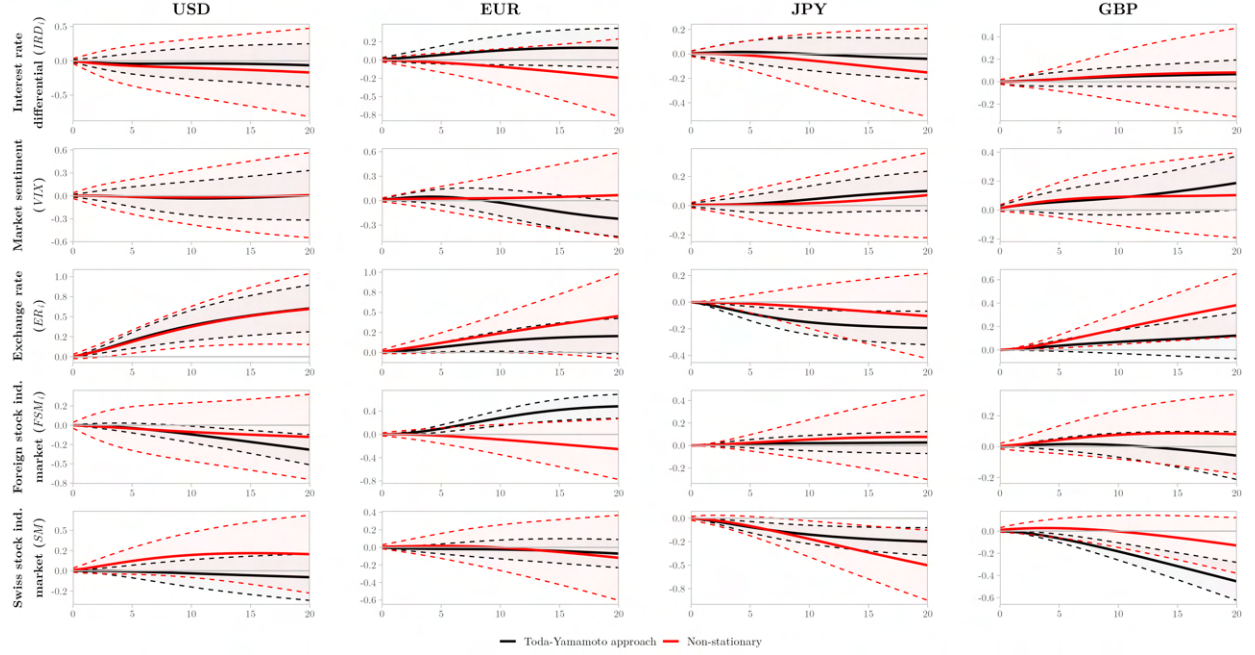


Figure D.3: Responses of Swiss franc carry trade (CT_i) to impulses of financial variables in each target currency model with non-stationary variables

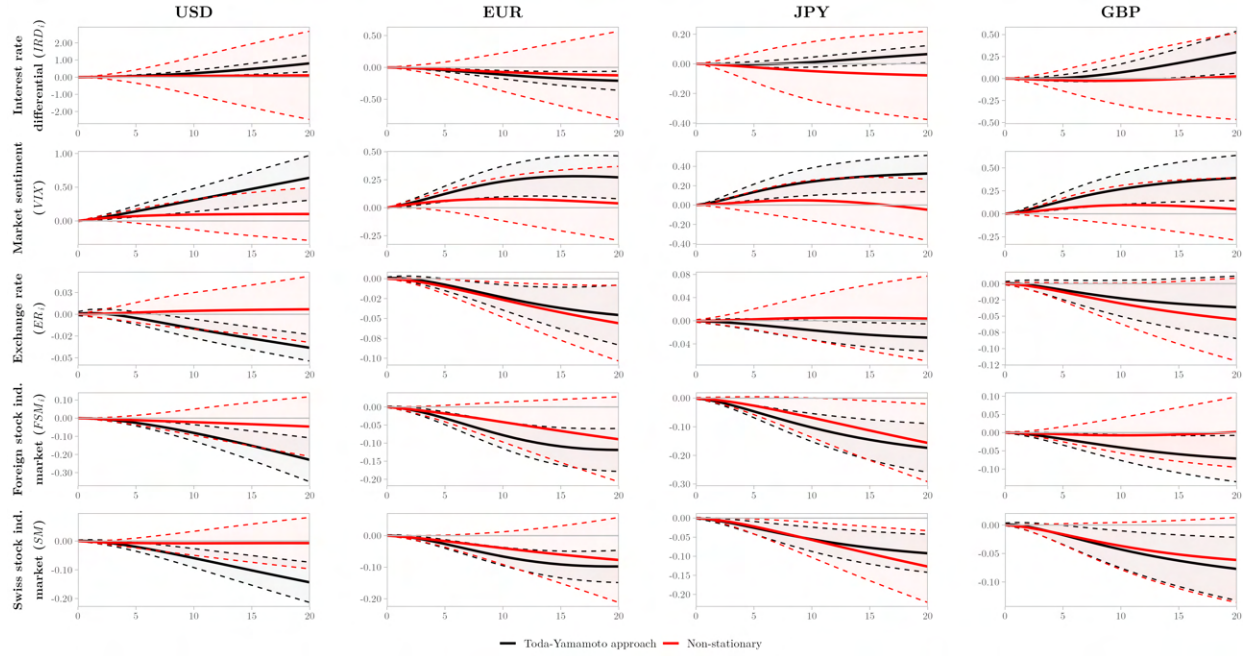


Figure D.4: Responses of financial variables to impulses of Swiss franc carry trade (CT_i) in each target currency model with non-stationary variables

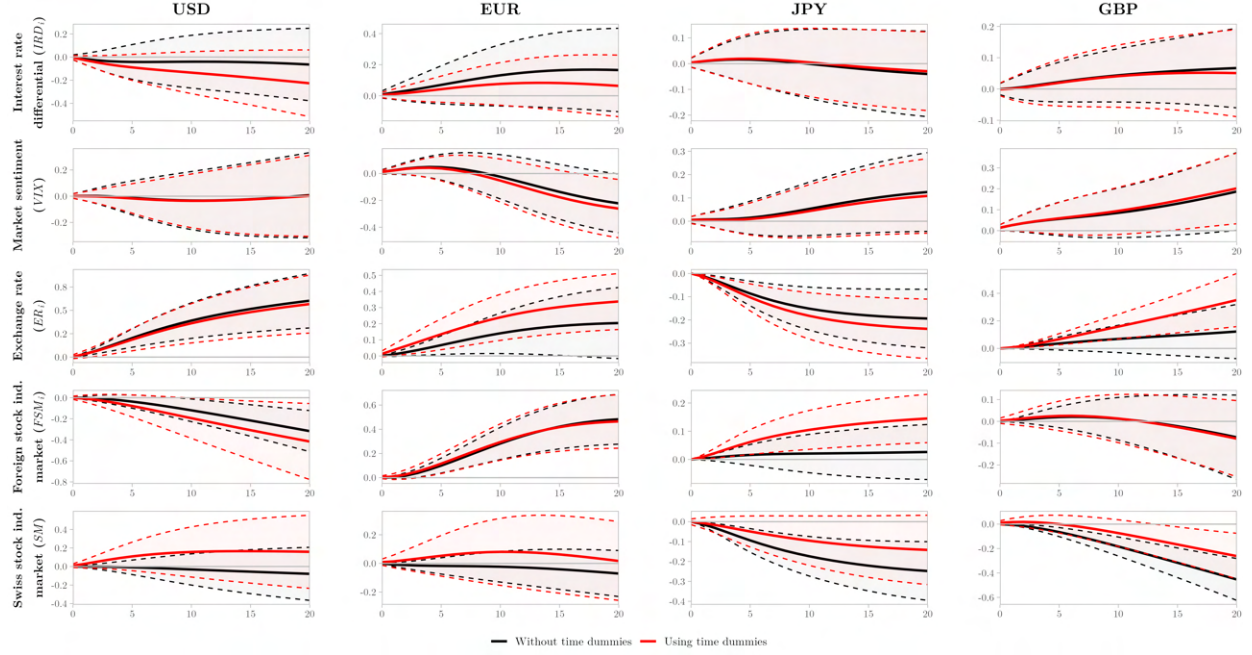


Figure D.5: Responses of Swiss franc carry trade (CT_i) to impulses of financial variables in each target currency model with the inclusion of a time dummy

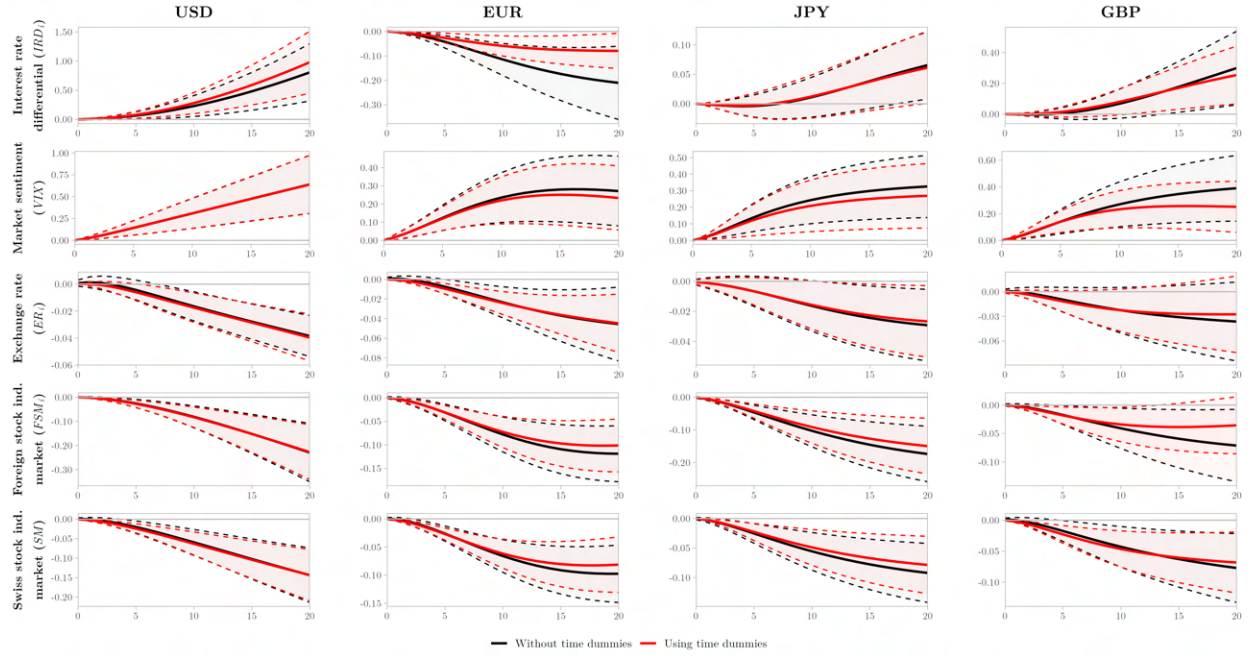


Figure D.6: Responses of financial variables to impulses of Swiss franc carry trade (CT_i) in each target currency model with the inclusion of a time dummy

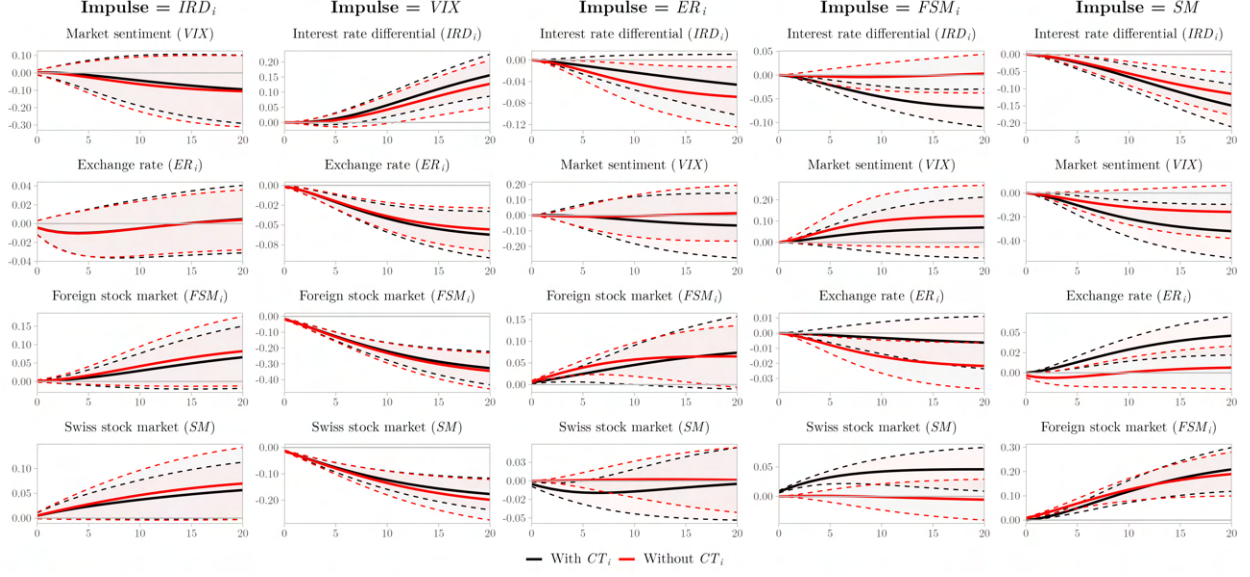


Figure D.7: JPY model estimated without Swiss franc carry trade (CT_i)

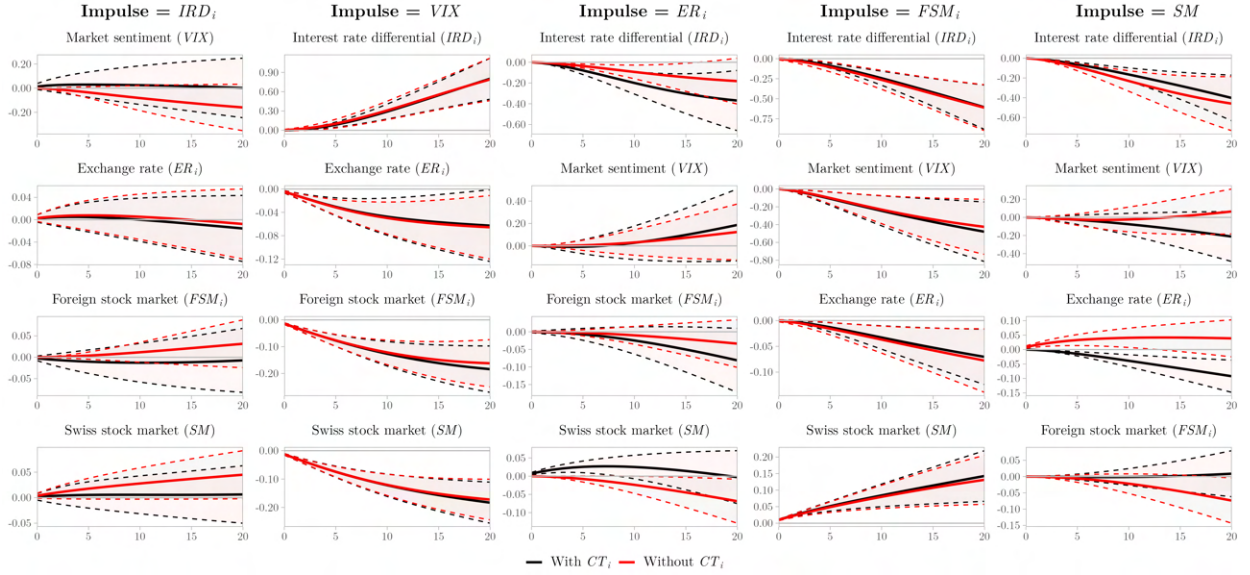


Figure D.8: GBP model estimated without Swiss franc carry trade (CT_i)

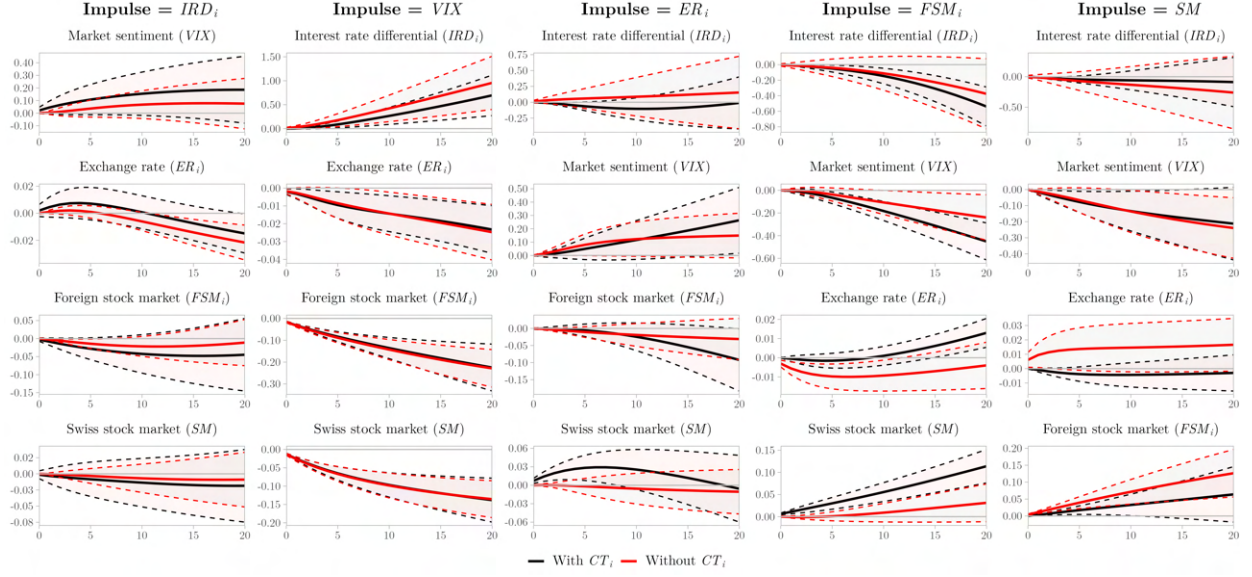


Figure D.9: USD model estimated without Swiss franc carry trade (CT_i)

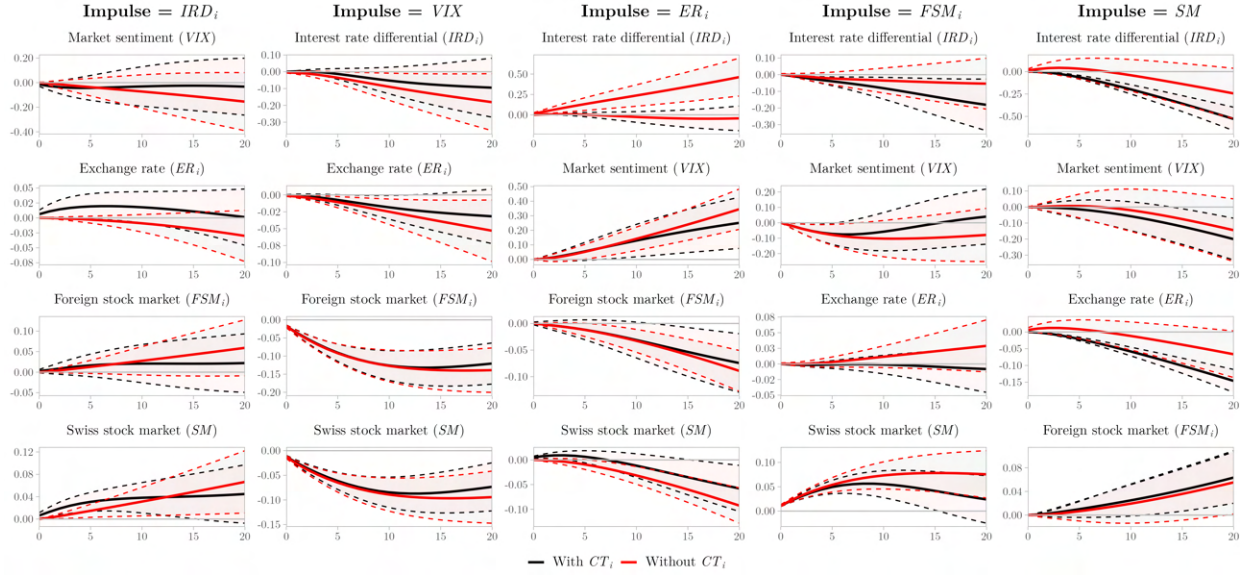


Figure D.10: EUR model estimated without Swiss franc carry trade (CT_i)