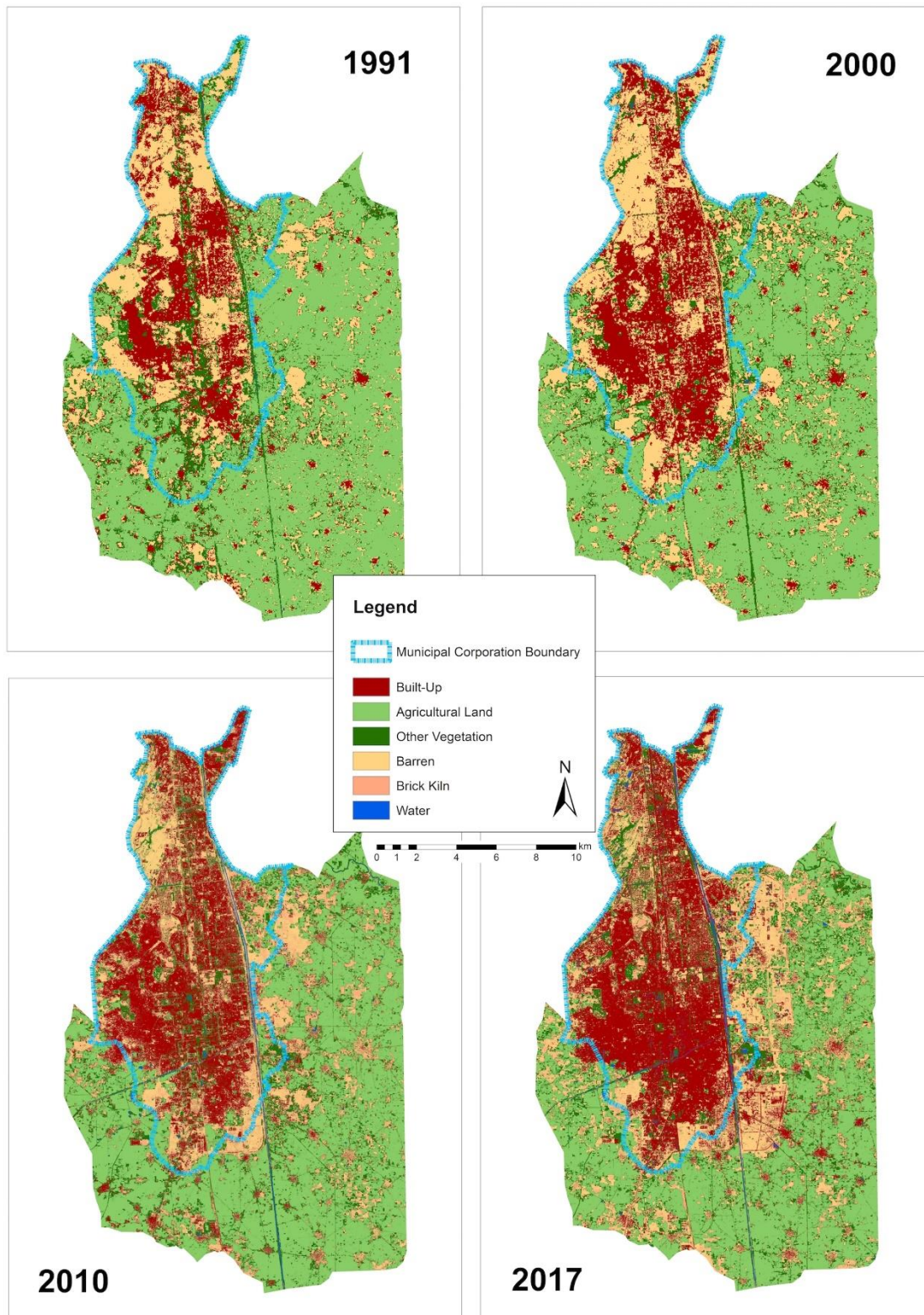


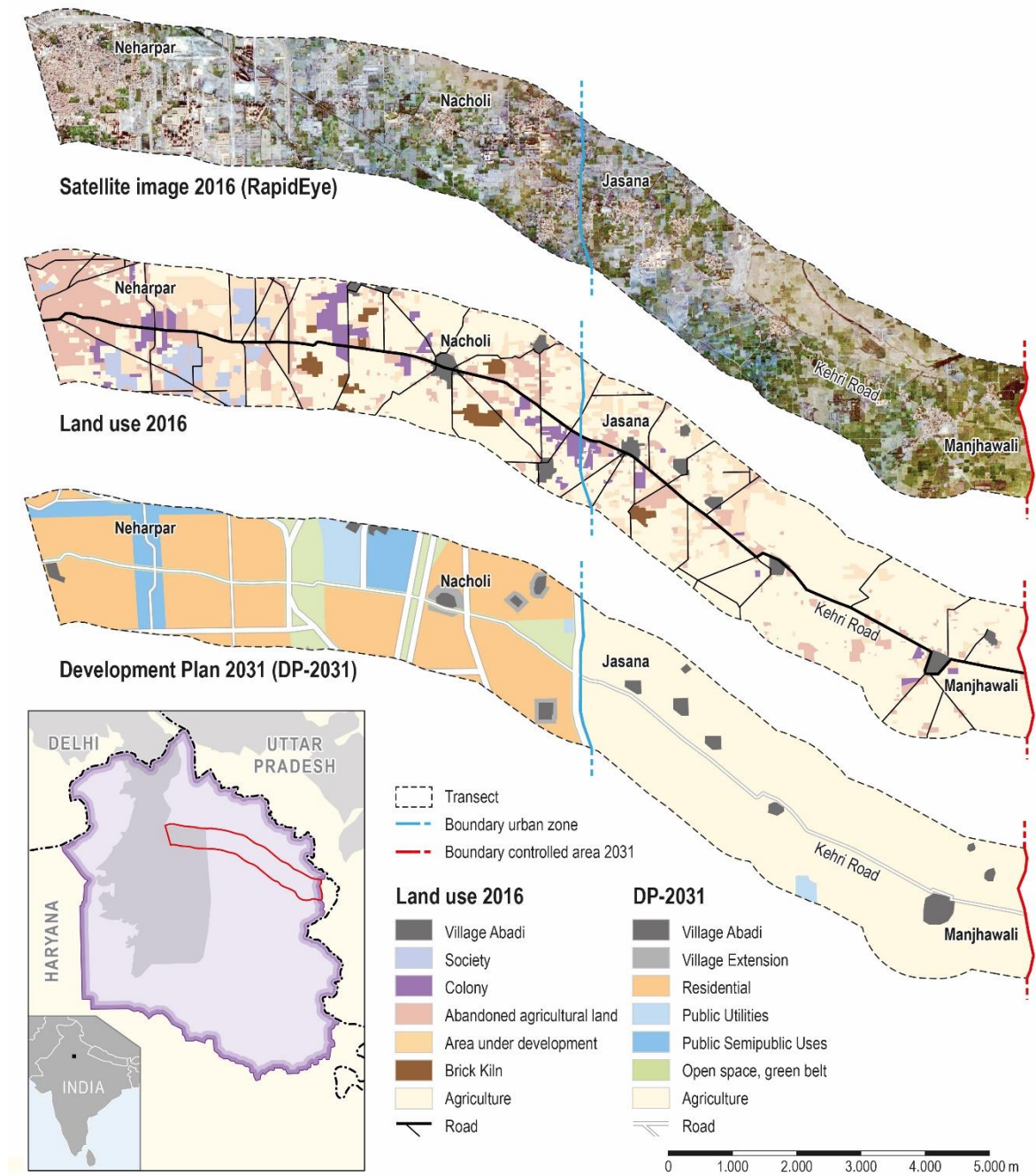
## Appendix A

**Figure A1: Land Use Change and Urban Growth of Faridabad 1991-2017**



Sources for the data: Landsat (1991, 2000) and RapidEye ©Planet Labs (2010, 2017).  
Analysis and Design: Mattner 2017

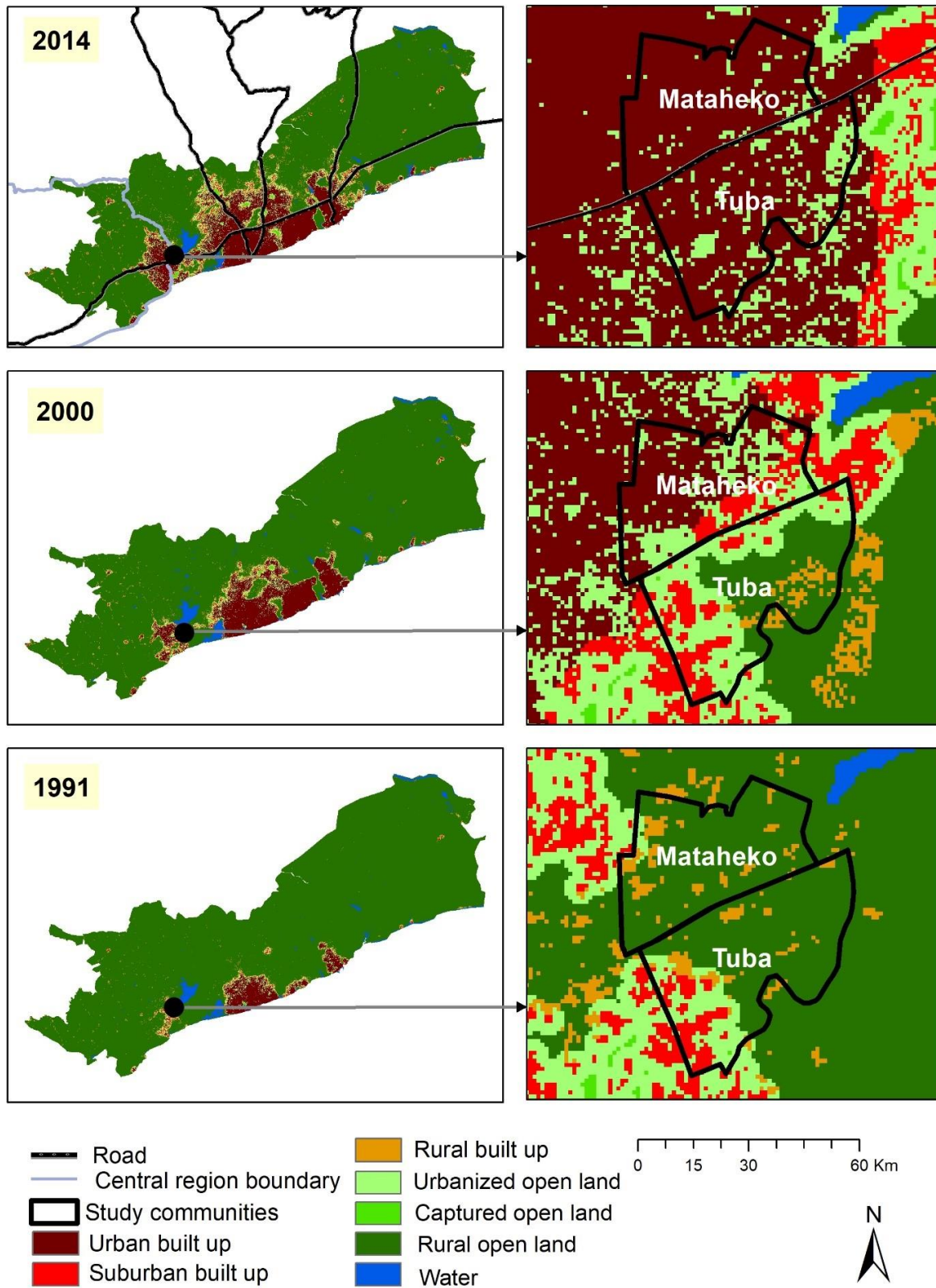
**Figure A2: Transect Analysis of Faridabad**



Sources for the data: Own fieldwork 2016, RapidEye ©Planet Labs (2016).  
 Design: A. Follmann; G. Hartmann; adopted from Follmann et al. 2018,  
 Cartography: R. Spohner



**Figure A3: Urban Growth Analysis of Accra with the communities Mataheko and Tuba in Kasoa**



Design: Adugbila (2019), Source for the data: <http://www.atlasofurbanexpansion.org/data>



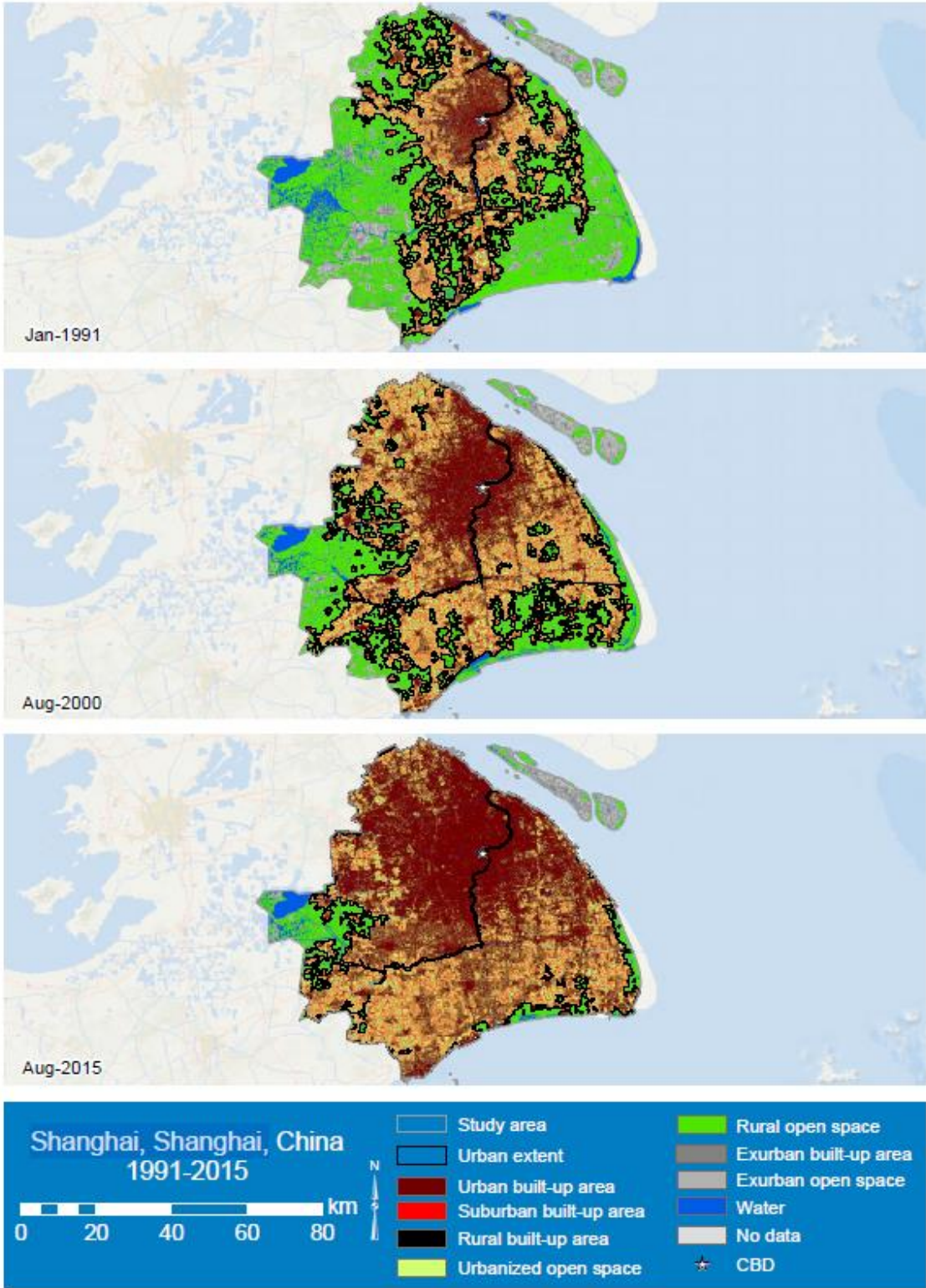
**Figure A4: Transformation of Mataheko and Tuba in Kasoa, Ghana (2009-2019)**



Source: Maps Data Google Earth, Maxar Technologies (2021)

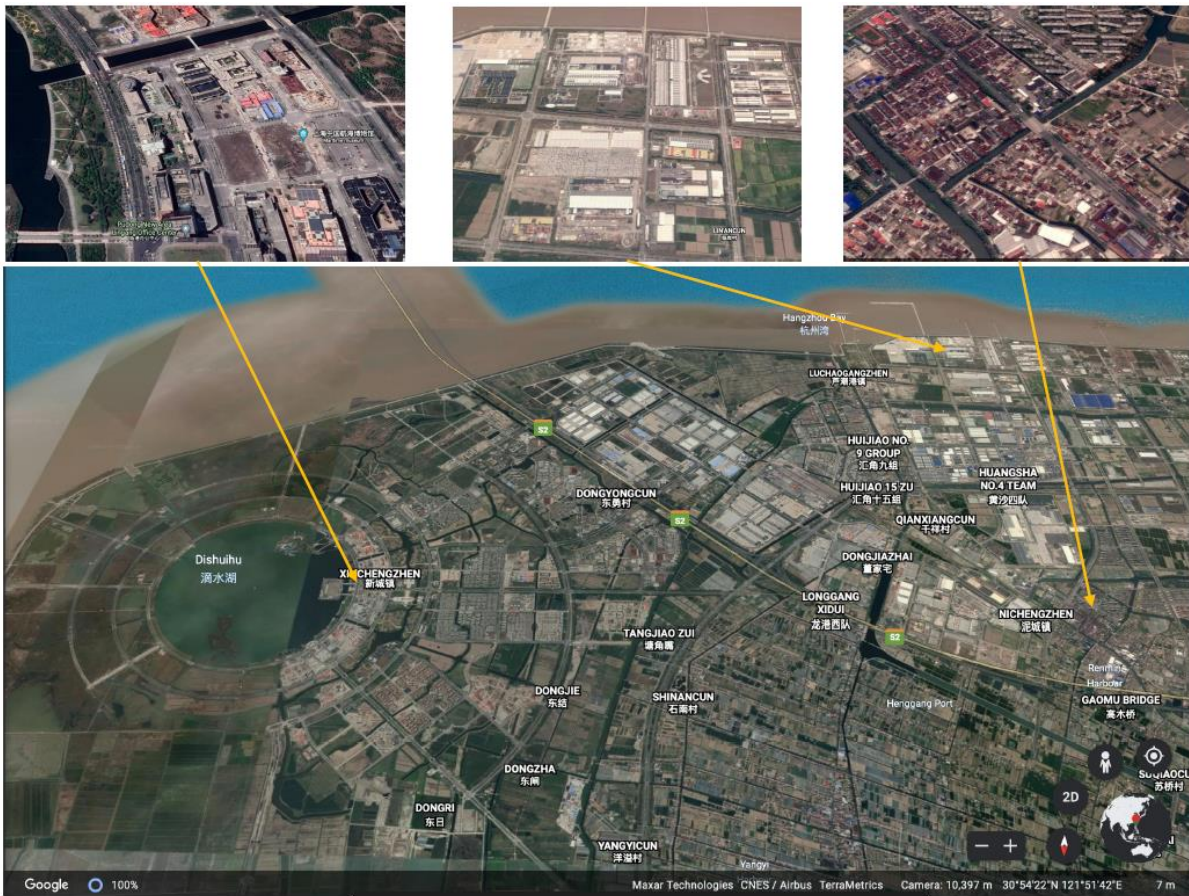


**Figure A5: Land-use change Shanghai 1991-2015**



Source: Angel, S., Blei, A., Civco, D., Lamson-Hall, P., Parent, J., Sanchez, N.G., Civco, D.L., Lei, R.Q., and Thom, K. (2016) *Atlas of Urban Expansion—2016 Edition, Volume 1: Areas and Densities*. New York: New York University, Nairobi: UN-Habitat, and Cambridge, MA: Lincoln Institute of Land Policy. Available online: <https://www.lincolnst.edu/publications/other/atlas-urban-expansion-2016-edition> (accessed on 22 June 2022).

**Figure A6: Bird's-Eye view of Lingang, Shanghai**



Source: Maps Data Google Earth, Maxar Technologies CNES / Airbus TerraMetrics (2021)

### References:

Adugbila, E. J. (2019). Assessing the impact of road expansion in peri-urban areas. The case of Kasoa, Accra City. MA Thesis, Master of Science in Geo-information Science and Earth Observation, University of Twente, Enschede, The Netherlands.

Angel, S., Blei, A., Civco, D., Lamson-Hall, P., Parent, J., Sanchez, N.G., Civco, D.L., Lei, R.Q., and Thom, K. (2016) *Atlas of Urban Expansion—2016 Edition, Volume 1: Areas and Densities*. New York: New York University, Nairobi: UN-Habitat, and Cambridge, MA: Lincoln Institute of Land Policy. Available online: <https://www.lincolnst.edu/publications/other/atlas-urban-expansion-2016-edition> (accessed on 22 June 2022).

Follmann, A., Hartmann, G., Dannenberg, P., 2018. Multi-temporal transect analysis of peri-urban developments in Faridabad, India. *Journal of Maps* 14 (1), 17-25.

Mattner, D. (2017). *Urbanisierungsprozesse und Landnutzungsveränderungen in Faridabad, Indien*. [Urbanization processes and changes in land use in Faridabad, India], unpublished thesis, University of Cologne, Institute of Geography.