



HAL
open science

Open Research Practices with the OntoME-Geovistory environment

Vincent Alamercery, Francesco Beretta, François-Joseph Favey, Djamel Ferhod, Stephen Hart, David Knecht, Gaétan Muck, Alexandre Perraud, Morgane Pica, Jonas Schneider, et al.

► To cite this version:

Vincent Alamercery, Francesco Beretta, François-Joseph Favey, Djamel Ferhod, Stephen Hart, et al.. Open Research Practices with the OntoME-Geovistory environment. Digital Humanities 2023. Collaboration as Opportunity (DH2023), Jul 2023, Graz, Austria. , 10.5281/zenodo.8107384 . halshs-04162294

HAL Id: halshs-04162294

<https://shs.hal.science/halshs-04162294>

Submitted on 14 Jul 2023

HAL is a multi-disciplinary open access archive for the deposit and dissemination of scientific research documents, whether they are published or not. The documents may come from teaching and research institutions in France or abroad, or from public or private research centers.

L'archive ouverte pluridisciplinaire **HAL**, est destinée au dépôt et à la diffusion de documents scientifiques de niveau recherche, publiés ou non, émanant des établissements d'enseignement et de recherche français ou étrangers, des laboratoires publics ou privés.



Distributed under a Creative Commons Attribution - ShareAlike 4.0 International License

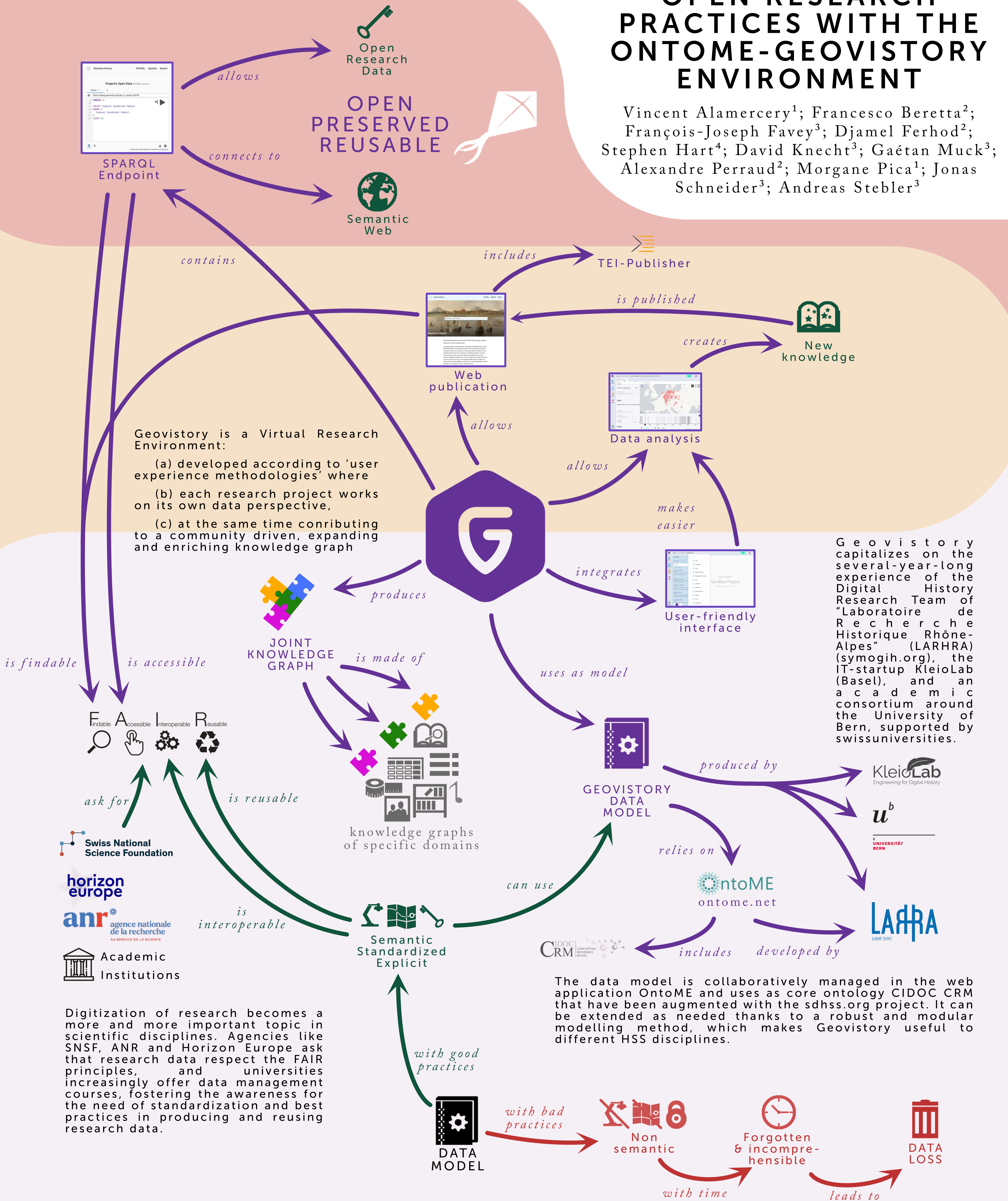


OPEN RESEARCH PRACTICES WITH THE ONTOME-GEOVISTORY ENVIRONMENT

Vincent Alamertery¹; Francesco Beretta²; François-Joseph Favey³; Djamel Ferhod²; Stephen Hart⁴; David Knecht³; Gaétan Muck³; Alexandre Perraud²; Morgane Pica¹; Jonas Schneider³; Andreas Stebler³

REUSE
PUBLICATION

DATA PRODUCTION



Despite the necessity for relevant, curated, high-quality data, HSS Academic research has yet to adopt best practices and workflows for research data publication and re-use. They lack:

- (a) standardized knowledge representation languages (ontologies) to document the meaning of data and
- (b) virtual research environments (VRE) facilitating collaborative data production, publication and reuse.

Most projects are therefore not in line with the FAIR principles, leading to a long-term archiving of data whose semantics is not made explicit and/or the model strictly focused on the specific research approach and therefore hardly reusable.

Organizations:

1: ENS de Lyon, LARHRA; 2: CNRS, LARHRA; 3: KleioLab; 4: Universität Bern



#DH2023 Graz

