



HAL
open science

Patient navigation for colorectal cancer screening in deprived areas: the COLONAV cluster randomized controlled trial

A. Bourmaud, Y. Benoist, F. Tinquaut, C. Allary, J. Ramone-Louis, M. Oriol, J. Kalecinski, V. Dutertre, Nicolas Lechopier, M. Pommier, et al.

► To cite this version:

A. Bourmaud, Y. Benoist, F. Tinquaut, C. Allary, J. Ramone-Louis, et al.. Patient navigation for colorectal cancer screening in deprived areas: the COLONAV cluster randomized controlled trial. *BMC Cancer*, 2023, 23 (1), pp.21. 10.1186/s12885-022-10169-3 . halshs-04175623

HAL Id: halshs-04175623

<https://shs.hal.science/halshs-04175623v1>

Submitted on 2 Aug 2023

HAL is a multi-disciplinary open access archive for the deposit and dissemination of scientific research documents, whether they are published or not. The documents may come from teaching and research institutions in France or abroad, or from public or private research centers.

L'archive ouverte pluridisciplinaire **HAL**, est destinée au dépôt et à la diffusion de documents scientifiques de niveau recherche, publiés ou non, émanant des établissements d'enseignement et de recherche français ou étrangers, des laboratoires publics ou privés.

RESEARCH

Open Access



Patient navigation for colorectal cancer screening in deprived areas: the COLONAV cluster randomized controlled trial

A. Bourmaud^{1,2,3*}, Y. Benoist⁴, F. Tinquaut², C. Allary², J. Ramone-Louis⁵, M. Oriol², J. Kalecinski^{2,3}, V. Dutertre², N. Lechopier^{6,7}, M. Pommier⁷, S. Rousseau^{2,4}, A. Dumas^{1,4}, P. Amiel^{1,4}, V. Regnier^{2,3}, V. Buthion⁵ and F. Chauvin^{2,3}

Abstract

Background The objective of this study was to assess the effectiveness of a Patient Navigation Intervention targeting deprived patients for Colo-Rectal Cancer (CRC) screening participation.

Methods A cluster randomized controlled trial was conducted in 5 districts. Peer Lay Patient Navigators were recruited to operate in deprived areas. Eligible participants had to be between 50 and 74 years old, live in these deprived areas and receive an invitation to the nationally organized Colo-Rectal Cancer (CRC) screening during the study period. The theory-driven navigation intervention was deployed for 18 months. A population Health Intervention Research assessment method was used to assess effectiveness and context interaction. The primary criterion was screening participation at 12 months.

Results Twenty-four thousand two hundred eighty-one individuals were included inside 40 clusters. The increase in participation in the intervention group was estimated at 23%, (ORa = 1.23, CI95% [1.07–1.41], $p = 0.003$). For the subgroup of individuals who participated, the time delay to participating was reduced by 26% (ORa = 0.74, CI95% [0.57–0.96], $p = 0.021$). Main factors modulating the effect of the intervention were: closeness of navigator profiles to the targeted population, navigators' abilities to adapt their modus operandi, and facilitating attachment structure.

Conclusion The ColoNav Intervention succeeded in demonstrating its effectiveness, for CRC screening. Patient Navigation should be disseminate with broader health promotion goals in order to achieve equity in health care.

Trial registration clinicaltrials.gov NCT02369757 24/02/2015.

Keywords Colorectal cancer screening, Patient navigation, Complex interventions, Health inequalities, Randomized control trial, Population health intervention research

*Correspondence:

A. Bourmaud
aurelie.bourmaud@aphp.fr

¹ Clinical Epidemiology Unit, Robert Debré Hospital, AP-HP, and INSERM CIC-EC 1426 and INSERM ECEVE 1123, University of Paris, 48 Bd Sérurier, 75 019 Paris, France

² Public Health Department, Hyg e Centre, Lucien Neuwirth Cancer Institute, Saint Priest en Jarez, France and Inserm, Clinical Investigation Center 1408, 42055 Saint-Etienne, France

³ Quality Safety Performance in Health (HESPER) EA7425, Lyon 1 University, Lyon, France

⁴ Unit  de Recherche en Sciences Humaines Et Sociales (URSHS) Institut Gustave Roussy, Paris, France

⁵ COACTIS EA 4161 - Centre de Recherche en Gestion - Research Center in Management Science ISH and Faculty of Economics and Management, Lumi re Lyon 2 University, Lyon, France

⁶ Lyon1 University, Lyon, France

⁷ UMR S2HEP, French Education Institute, Ecole Normale Sup rieure de Lyon, Lyon, France



  The Author(s) 2023. **Open Access** This article is licensed under a Creative Commons Attribution 4.0 International License, which permits use, sharing, adaptation, distribution and reproduction in any medium or format, as long as you give appropriate credit to the original author(s) and the source, provide a link to the Creative Commons licence, and indicate if changes were made. The images or other third party material in this article are included in the article's Creative Commons licence, unless indicated otherwise in a credit line to the material. If material is not included in the article's Creative Commons licence and your intended use is not permitted by statutory regulation or exceeds the permitted use, you will need to obtain permission directly from the copyright holder. To view a copy of this licence, visit <http://creativecommons.org/licenses/by/4.0/>. The Creative Commons Public Domain Dedication waiver (<http://creativecommons.org/publicdomain/zero/1.0/>) applies to the data made available in this article, unless otherwise stated in a credit line to the data.

Background

Colo-rectal cancer (CRC) is the third leading cause of cancer deaths worldwide [1] and the second in France [2]. Screening has demonstrated its efficacy and efficiency in reducing CRC incidence and mortality rates over the past 2 decades among adults aged 50 years and older [3–5]. Until recently, international recommendations were to undergo regular screening with either a high-sensitivity, stool-based test or a structural (visual) examination, depending on patient preference and test availability, for all people (men and woman) aged between 50 and 75 [6]. In France, a population-based CRC screening program is in operation, targeting all French individuals aged from 50 to 74 without higher risk factors for CRC. This population is encouraged by mail to consult their general practitioner, who delivers the screening test. The test used until 2015 was the Fecal Occult Blood Test (FOBT) and since 2015 is the Fecal Immunochemical Test (FIT). It is recommended to repeat this screening every two years. In order to maximize the health benefit and to be efficient, this screening program requires a participation rate of at least 50% [7, 8] which is constantly only above 40% [9]. Furthermore, it has been highlighted that the socio-economically deprived population participates less than others [10]. France is one of the European countries with the highest rate of social health inequalities, impacting mortality and cancer rates, including the CRC [11–13]. Factors associated with social inequalities in health are lower socio-economic status, income, educational level and health literacy level [14]; ethnic minorities participate less in CRC screening than their white counterparts, whichever factors are adjusted for [15, 16].

Patient Navigation (PN) interventions are programs specifically designed to overcome the individual's perceived barriers to screening [17]. These programs are culturally tailored and target a specific deprived population in order to straighten the path to CRC screening for this population. Obstacles tackled by such programs range from unawareness of the existence of CRC screening to transportation issues, and include issues of belief or disbelief. These interventions have been increasingly adopted in the United States of America (USA) and Canada [18]. When this study began, Patient Navigation interventions had never been trialed in France, although an intervention targeting social inequities in health and aiming to improve CRC screening participation should be attractive in such a setting. This study was undertaken to assess the effectiveness of a PN program for CRC screening participation in France, among a deprived population, through a cluster randomized control trial. The secondary objectives were to assess the effect of the context on the effectiveness as well as on the mode of operation of Patient Navigators.

Methods

Study design

COLONAV is a cluster randomized controlled trial conducted in 5 French Departments (districts). It assesses the effectiveness of a Patient Navigation Intervention among deprived populations. The study used a complex interventions evaluation methodology to assess the effectiveness of this intervention [19].

The study was approved by an institutional review board (Ethical Committee of Saint Etienne University Hospital, 10th of January 2013), which waived the need for signed informed consent according to French law, since the study involved healthy people and proposed no treatment. The study protocol has been detailed elsewhere [20].

In the framework of real world complex intervention evaluation [21–24] this study performed a multidisciplinary assessment, with mixed quantitative and qualitative methods, in order to assess, besides the efficacy for health outcomes, the effect of the context [25].

- Effectiveness for health outcomes was evaluated quantitatively through the cluster randomized control trial.
- Context evaluation was performed quantitatively through the strata analysis alongside the trial and qualitatively through an ethnographic evaluation.

Cluster randomized control trial

Selection process

Five districts (départements) were selected according to their characteristics and their CRC screening participation rates (<30%): five different districts with a low participation rate were retained: i) A rural district (Ardèche), ii) A district with an industrial economy and low development (Loire) iii) A district with a tertiary economy and high development (Rhône) iv) A district where CRC screening has been implemented for a long time (Côte d'Or), v) One of the suburban districts of Paris, highly urban (Val-de-Marne).

The cluster unit is the “Ilots Regroupés pour l'Information Statistique” (IRIS) zone, or « Clustered Units for Statistical Information» zone. Each district in France is divided into IRIS zones, ie aggregated units for statistical information used as a system for dividing the country into units of equal size (2000 residents per basic unit). IRIS zones eligible for this study were IRIS zones from the 5 districts selected for their low participation rate in CRC screening and with socioeconomic indicators of a deprived population. Deprived IRIS zones inside districts were selected using an ecological deprivation index. The French European Deprivation Index (EDI) was

used to determine the socio-economic level of the population living in IRIS zones. French EDI is divided into 5 quintiles; from 1 (least deprived) to 5 (most deprived). For all 5 districts, IRIS zones with an EDI corresponding to a deprived population (score 4 and 5) were all selected for the randomization. The mean number of deprived IRIS zones by district was 384. A total of 1920 deprived IRIS zones were selected.

Participants

Participants included in the study were due to receive an invitation to the nationally organized Colo-Rectal Cancer (CRC) screening during the study period. Invitation is by an administrative letter sent every two years to those aged between 50 and 74 by a screening management structure. Invitations sent by the structure encourage people to consult their General Practitioner (GP) so that he delivers them the screening test, which is made at home and sent for analysis by mail to the laboratory. Results are sent back to the GP and the screening management structure, where the data were collected.

Study participants were men and women aged from 50 to 74, invited to participate in the CRC screening. The inclusion criteria were: to be between 50 and 74 years old at the time of selection, to be covered by health insurance, to have their postal address located within the IRIS zone concerned, and to be included in the register of persons eligible for organised colorectal cancer screening. Being included in this register led to an automatic invitation to screening every 2 years. The exclusion criteria were not being included in the registry because of a change of residence, lack of insurance coverage, or ineligibility for screening (history of colorectal cancer, or at high or very high risk of colorectal cancer, and therefore followed up elsewhere). Data on participation in screening in the 2 years prior to the start of the study were collected retrospectively from the screening management structures for all participants. Participants were followed prospectively for 2 years after the implementation of the intervention. 1 year during which the navigators carried out their intervention and 1 year for the collection of screening data.

Randomization and blinding procedures

Among all IRIS zones from the 5 districts eligible for the study (N=1920), the participant IRIS were randomly selected with a 2 steps selection process. The centralized randomization was stratified by districts. For the experimental group, one IRIS per district was selected randomly from the eligible IRIS. Then 3 eligible adjacent IRIS were selected accordingly, in order to construct the experimental group. It was mandatory for the

experimental group of 4 IRIS to have a continuous geographical setting, since the Navigator was supposed to act in a geographical “puddle-like” unit of action. For the Control group: 4 remote IRIS were randomly selected from the eligible IRIS of the district. The randomization was performed at the IRIS level and was performed at once, before the beginning of the study, by an independent statistician. The allocation ratio of experimental and control groups was set at 1:1.

The trial was an open trial since no blinding was possible. But individuals not contacted by the navigator and individuals in the control group were blinded to their group, and even blinded to the study. Investigators were blinded to the measurement and collection of the primary outcome.

Sample size calculation estimated that the number of IRIS zones needed to meet the objectives of the study was 20 IRIS in the intervention group and 20 in the control group. This estimation relies on the following assumptions: We estimated that the intervention would be relevant if it provided an 8% absolute increase in the colorectal cancer screening participation rate. With a two-sided α risk of 0.05 and a β risk of 0.2, and assuming an intraclass correlation coefficient for clusters of 0.04 and a mean of 500 patients per cluster (assuming an average of 2000 people per IRIS zone and percentage of people between 50 and 75 years equal to 25% of the total population), we needed 20 clusters per arm. This represents: 4 experimental IRIS zones and 4 control IRIS zones per department. For a total of $40 \times 500 = 20\,000$ patients).

Intervention

Development of the intervention based on collected evidence

The first step of the Colonav study, was to investigate French local context characteristics and to tailor the patient navigation intervention to those characteristics. A field diagnosis was performed by a sociologist. Fifty-three interviews with professional stakeholders were conducted prior to the construction of the study. Details and results of this field diagnosis are given in supplementary material.

The Patient Navigation Intervention construction as well as Patient Navigators recruitment has been described in the protocol's article [20]. The construction of the intervention relies on the Fiscella conceptual framework [26] where Patient Navigation in cancer care is defined as: “individualized assistance offered to patients, families, and caregivers to help overcome barriers and facilitate timely access to quality medical and psychosocial care from pre-diagnosis through all phases of the cancer experience”. The balance between the healthcare system and the community is at the root of this framework. Navigators recruitment and training

had to follow field diagnosis recommendations. Finally, the PN had to have an institutional attachment, in order to ensure scientific legitimacy, as reported in the Fiscella model. The PN was to be hosted by the local team of the French National Patient Association Against Cancer (a Non-Governmental Organization, well established in France: La ligue Nationale contre le Cancer).

Control

Men and women in the control group lived in the IRIS zones (clusters) randomized in the control group. They were aged 50 to 74 and the usual process for CRC screening was delivered to them, without changes.

Effectiveness outcomes measures

Primary outcome

The primary outcome is the difference between before/after participation rates (12 months duration) in the intervention IRIS zones and in the control IRIS zones. This measure was collected directly from the cancer screening management structures of the 5 districts, so investigators, PN and subjects were end-point blinded.

Secondary outcomes

The time delay to participating was assessed according to the recommendations made by the National Patient Navigation Leadership Summit [26].

Contextual analysis

Strata analysis

In order to capture the differential effectiveness of the PN interventions according to the context (PN characteristics, population and geographical characteristics) each primary and secondary outcome was assessed by district strata.

Ethnographic study

In order to capture the context influence on the PN mode of operation a qualitative analysis was performed by an ethnographer. Participants were the five navigators, and people targeted by the Colonav PN intervention, met by the navigator during the survey (3 days spent in immersion with the PN). This survey was based on qualitative methods: Observations were ethnographic in nature. These observations consisted on the one hand of semi-directive interviews and on the other hand of on-site observations. The latter were participatory in the sense that the researcher is not external to the action but interacts with the actors involved. Local involvement of the researcher was preferred to exteriority of vision. The data from on-site observations were recorded, in the most exhaustive way possible, in a field journal by the researcher. The interviews were semi-structured,

conducted on the basis of an interview guide which indicates a list of themes. Themes were approached in the natural order of the conversation, taking into account the contingencies of the interaction. Part of the interview was devoted to the interviewee's life story and useful socio-demographic and socio-economic descriptions. The interviews were recorded (with the express oral agreement of the interviewee) and transcribed in full.

Analysis

Statistical

All variables were described by frequency (%), with missing data, for categorical variables, and mean (SD) or median (Q1-Q3), with missing data, for quantitative variables. The effectiveness of the intervention was measured comparing the delta of before-after participation rate in the intervention arm and the control arm. The primary outcome (the difference between before/after participation rates) was analyzed by logistic regression analysis methods taking into account the interactions between the period and area. Completion time of the screening test between intervention areas and control areas before and after the intervention was also compared. In order to address cluster design issues, the influence of other collected variables was tested using univariate tests (Chi2 or Fisher test for categorical variables and Student or Wilcoxon test for quantitative variables). A multivariate model was implemented in order to take possible confounding factors into account. Analysis of delay to participation was performed with an ANOVA model (on the sub-group of participating patients). A priori strata analyses were performed for the same outcomes, with the same statistical methods, inside each strata.

All analyses were carried out using SAS version 9.3 and R software (version 3.2.2).

Ethnographic

The data were analyzed using the classical inductive methods of social anthropology. The strategy for analyzing observational and interview data combined the "case-oriented" and "variable-oriented" approaches: it involved both reporting on the functioning of the situation for itself and reporting on similarities and differences between situations on variables related to representations, health behaviors and situations experienced by the subjects. Each case, through the data collected on it, was analyzed in depth using thematic matrices; the transversal variables were gradually emergent. When data saturation was reached, final results were produced.

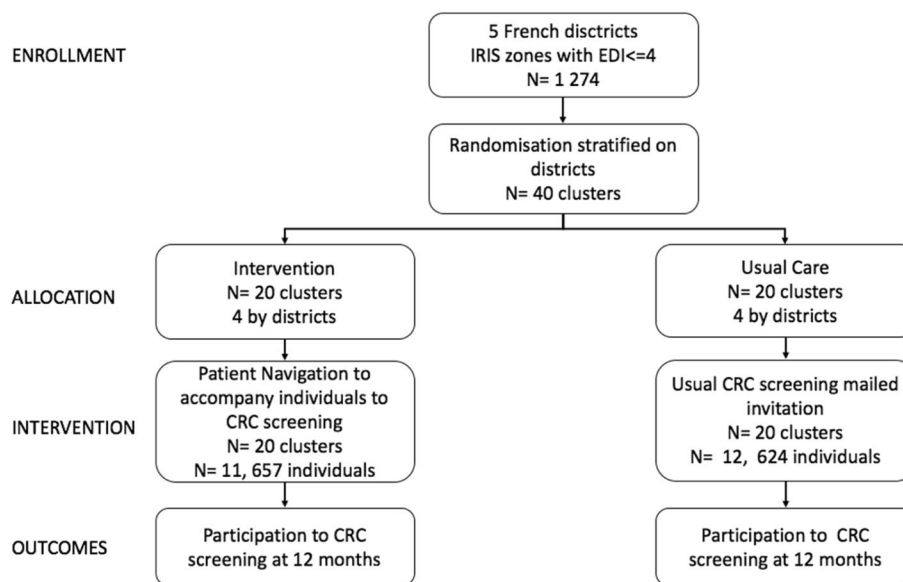


Fig. 1 Study Flow Chart

Table 1 Patients’ characteristics for both arms

| Variables | Modality | Control arm (N= 12,624) | PN Intervention arm (N= 11,657) | Total (N= 24,281) | P value |
|---|--------------|-------------------------|---------------------------------|-------------------|------------------|
| Gender | Female | 6817 (54%) | 6087 (52.2%) | 12,904 (53.1%) | 0.006 |
| | Male | 5807 (46%) | 5570 (47.8%) | 11,377 (46.9%) | |
| Age | Mean (sd) | 61.3 (6.9) | 61.2 (7.1) | 61.2 (7) | 0.155 |
| | Min—max | 49.3—76.1 | 50—75.1 | 49.3—76.1 | |
| Age | (49,55] | 2976 (23.6%) | 2893 (24.8%) | 5869 (24.2%) | 0.027 |
| | (55,60] | 2793 (22.1%) | 2556 (21.9%) | 5349 (22%) | |
| | (60,65] | 2714 (21.5%) | 2352 (20.2%) | 5066 (20.9%) | |
| | (65,70] | 2400 (19%) | 2181 (18.7%) | 4581 (18.9%) | |
| | (70,75] | 1722 (13.6%) | 1660 (14.2%) | 3382 (13.9%) | |
| | NA | 19 (0.2%) | 15 (0.1%) | 34 (0.1%) | |
| District (Département) | Rhône-Alpes | 3017 (23.9%) | 3085 (26.5%) | 6102 (25.1%) | <0.001 |
| | Loire | 2590 (20.5%) | 3108 (26.7%) | 5698 (23.5%) | |
| | Côte d’or | 2467 (19.5%) | 2076 (17.8%) | 4543 (18.7%) | |
| | Val de Marne | 2604 (20.6%) | 1761 (15.1%) | 4365 (18%) | |
| | Ardèche | 1946 (15.4%) | 1627 (14%) | 3573 (14.7%) | |
| Previously screened | No | 8259 (65.4%) | 7616 (65.3%) | 15,875 (65.4%) | 0.373 |
| | Yes | 3003 (23.8%) | 2847 (24.4%) | 5850 (24.1%) | |
| | NA | 1362 (10.8%) | 1194 (10.2%) | 2556 (10.5%) | |
| Time since last participation (for those previously screened) in months | Frequency | 2254 (99.8%) | 2325 (99.8%) | 4579 (99.8%) | 0.007 |
| | Mean (sd) | 4.4 (3.3) | 4.2 (3.4) | 4.3 (3.4) | |
| | Min—max | 00—20.3 | 00—22.8 | 00—22.8 | |

Results

Effectiveness analysis

Forty clusters were included in the study, from 5 different

districts. 24,281 individuals living in the selected clusters were sent an invitation to participate in CRC screening during the study period (November 2014–November 2015),

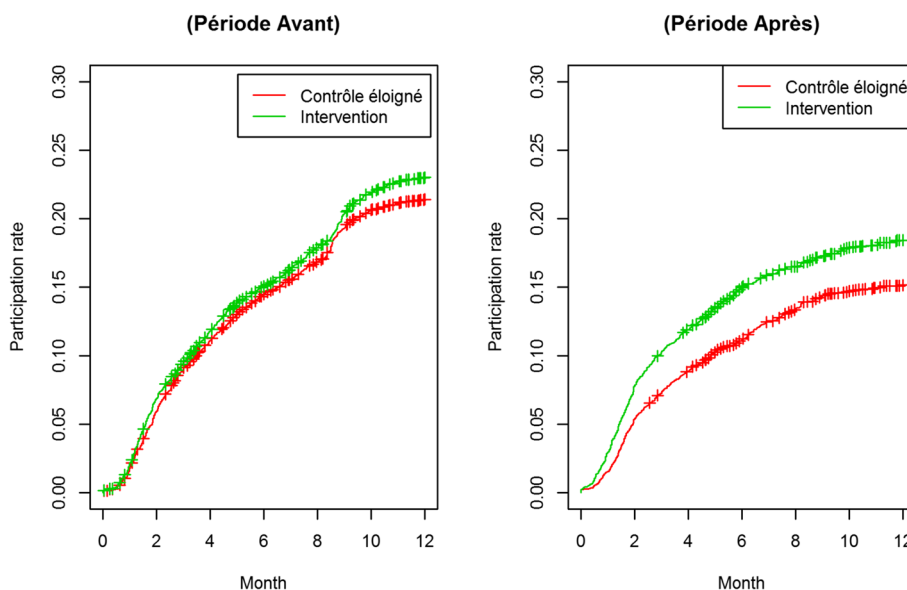


Fig. 2 Evolution of participation rate by time (Kaplan Meier curves) according to the group, for the whole population of the trial

meaning that 24,281 subjects were included in this research, 12,624 in the control group and 11,657 in the intervention group (Fig. 1, Table 1). Their distribution by districts is representative of the specific population density of each of those districts. The majority of the subjects had never been screened for CRC (65,4%). The two groups were unbalanced in terms of age, gender and time since last participation for people having previously performed the screening.

The results of this study (Fig. 2) show a participation rate of 21.4% in the control group in the 12 months prior to the implementation of the intervention and 21.9% in the experimental group in the same period. Following the implementation of the intervention in the intervention group territories, participation at 12 months was 14,6% in the control group and 18.6% in the experimental group. This corresponds to a crude increase of 2,5% in participation between the 2 groups and between the 2 periods, and a relative increase of 15,5%. The results on the primary criteria (Table 2, Fig. 2) highlighted a statistically significant effect of the patient navigation intervention on the CRC screening participation rate at 12 months, with an increase of participation between both groups of 15% (OR = 1.15, CI95% [1.01,1.31], $p = 0.038$). The difference

in difference (DID) model that was chosen to estimate the effect of the PN intervention reports: data on allocation of groups, and time periods. In such a model, it is the coefficient on the interaction term that is an estimate of the intervention effect under the common trend assumption. The size of the effect of the intervention on the participation rate is increased when adjusting for unbalanced variables (age and gender) and districts (Table 3), with the DID model: it is estimated at 23% (ORa = 1.23, CI95% [1.07,1.41], $p = 0.003$). The time delay to participation for the subgroup of people who participated in screening was, prior to the implementation of the study, a median of 3.8 months (IQR 2.0–6.5) for the control group and 3.7 months (IQR 1.8–6.8) for the intervention group. This drops to a median of 3 months (IQR 1.7–5.3) for the control group and 2.5 months (IQR 1.6–4.7) for the experimental group, i.e. an accelerated participation of 0,5 month for the experimental group compared to the control group. The time delay to participation (table S1 supplementary material) was statistically significantly reduced inside the intervention group, after adjustment for age, gender and districts: it decreased by 26% (OR = 0.74, CI95% [0.57,0.96], $p = 0.021$).

Table 2 primary outcome assessment with logistic regression and interaction

| N = 24,281 | Crude OR (95%CI) | Adj. OR (95%CI) | P (Wald's test) |
|---------------------------------------|------------------|-------------------------|-----------------|
| Time: after vs before | 0.72 (0.67,0.77) | 0.67 (0.61,0.73) | <0.001 |
| Arm: Intervention vs Control | 1.15 (1.07,1.22) | 1.09 (1.01,1.19) | 0.035 |
| Time*arm = Intervention effect | - | 1.15 (1.01,1.31) | 0.038 |

Legend: the effect of the intervention is estimated by the interaction between time and arm, with an adjusted Odds Ratio.

Table 3 multivariate analysis of the intervention effect, adjusted on confusing variables (age districts and gender)

| N = 24,281 | Crude OR (95%CI) | Adj. OR (95%CI) | P (Wald's test) |
|--------------------------------|------------------|-------------------------|-----------------|
| Time: after vs before | 0.72 (0.67,0.77) | 0.7 (0.64,0.78) | <0.001 |
| Arm: Intervention vs Control | 1.15 (1.07,1.22) | 0.999 (0.919,1.087) | 0.975 |
| Districts ref= 21 | | | |
| 42 | 0.91 (0.83,1) | 0.89 (0.81,0.97) | 0.008 |
| 69 | 0.62 (0.57,0.68) | 0.61 (0.55,0.67) | <0.001 |
| 7 | 0.52 (0.46,0.58) | 0.53 (0.48,0.6) | <0.001 |
| 94 | 0.09 (0.07,0.1) | 0.09 (0.07,0.11) | <0.001 |
| Age:]53–70] vs [49–52] | 1.28 (1.16,1.4) | 1.33 (1.2,1.46) | <0.001 |
| Gender: M vs F | 0.74 (0.69,0.79) | 0.77 (0.72,0.82) | <0.001 |
| Time*arm = intervention effect | - | 1.23 (1.07,1.41) | 0.003 |

Legend: the effect of the intervention is estimated by the interaction between time and arm, with an adjusted Odds

Context analysis

The strata analysis did not identify any significant efficacy of the patient navigation intervention at the district level, even after adjustment for age and gender (tables S2 to S6, in supplementary material).

However, figures for participation evolution over time according to time and groups display a heterogeneous process of participation according to district and also according to patient navigator (Fig. 3). In Ardeche, cumulative participation shows a marked increase in the participation rate between before and after inside the intervention group but a marked decrease of participation inside the control group. The before-participation rate at 12 months was of 13.4% in the control group and 20.3% in the experimental group. The after-participation rate at 12 months was 12.8% in the control group and 23.9% in the experimental group i.e. a crude increase of 4.5%. The increase in participation was estimated at 23% (adjusted OR, $p=0.27$) by the DID model, but without statistical significance. In the Côte d’Or, both participation rates decreased between before and after, but there was a markedly smaller decrease in the intervention group than in the control group. The before-participation rate at 12 months was of 32.1% in the control group and 31.2% in the experimental group. The after-participation rate at 12 months was 21.4% in the control group and 24.5% in the experimental group i.e. a crude increase of 3.9%. This led to an increase in favor of the intervention group, but still not significant (+17%, adjusted OR, $p=0.24$). In the Loire district and in the Rhône district, both participation rates decreased between before and after, but remained very similar between both groups, although the global decrease was bigger in the Loire than in the Rhône district. In the Loire district the before-participation rate at 12 months was of 33% in the control group and 28.7% in the experimental group. The after-participation rate at 12 months was 25.3% in the control

group and 22.3% in the experimental group i.e. a crude increase of 1.3%. In the Rhône district the before-participation rate at 12 months was of 22.8% in the control group and 21.4% in the experimental group. The after-participation rate at 12 months was 18.3% in the control group and 18.6% in the experimental group i.e. a crude increase of 1.7%. In both districts the results of the DID models showed a slight increase in favor of the intervention group: 12% more (adjusted OR, $p=0.37$) for the Loire district and 8% more (adjusted OR, $p=0.61$) for the Rhône district. In the Val de Marne, the baseline participation rate was very low in both groups, compared to other districts. Here, the before-participation rate at 12 months was of 1.25% in both control and intervention group. The after-participation rate at 12 months was 3.1% in the control group and 4.7% in the experimental group i.e. a crude increase of 1.6%. In this district, participation rates increased between the before and the after period in both groups, with a larger increase in the intervention group, estimated by the DID model, but not significantly (+12%, adjusted OR, $p=0.8$).

Context interactions were explored through the ethnographic analysis. Navigators identified the main characteristic of their intervention area as the predominance of poverty among the people encountered. This poverty puts CRC screening far behind in the order of these people’s priorities. Since the targeted population was the deprived population, the poverty barriers were all the more present. The navigators first had to discuss and propose solutions about bills, rents, children’s job search and problems with the justice system. Another main contextual characteristic underlined was the language: navigators encountered many people who did not speak French. Navigators sharing a common language with the local communities were more adapted to their function, since they manage to lower this barrier. Another contextual factor that affected navigators’ actions was

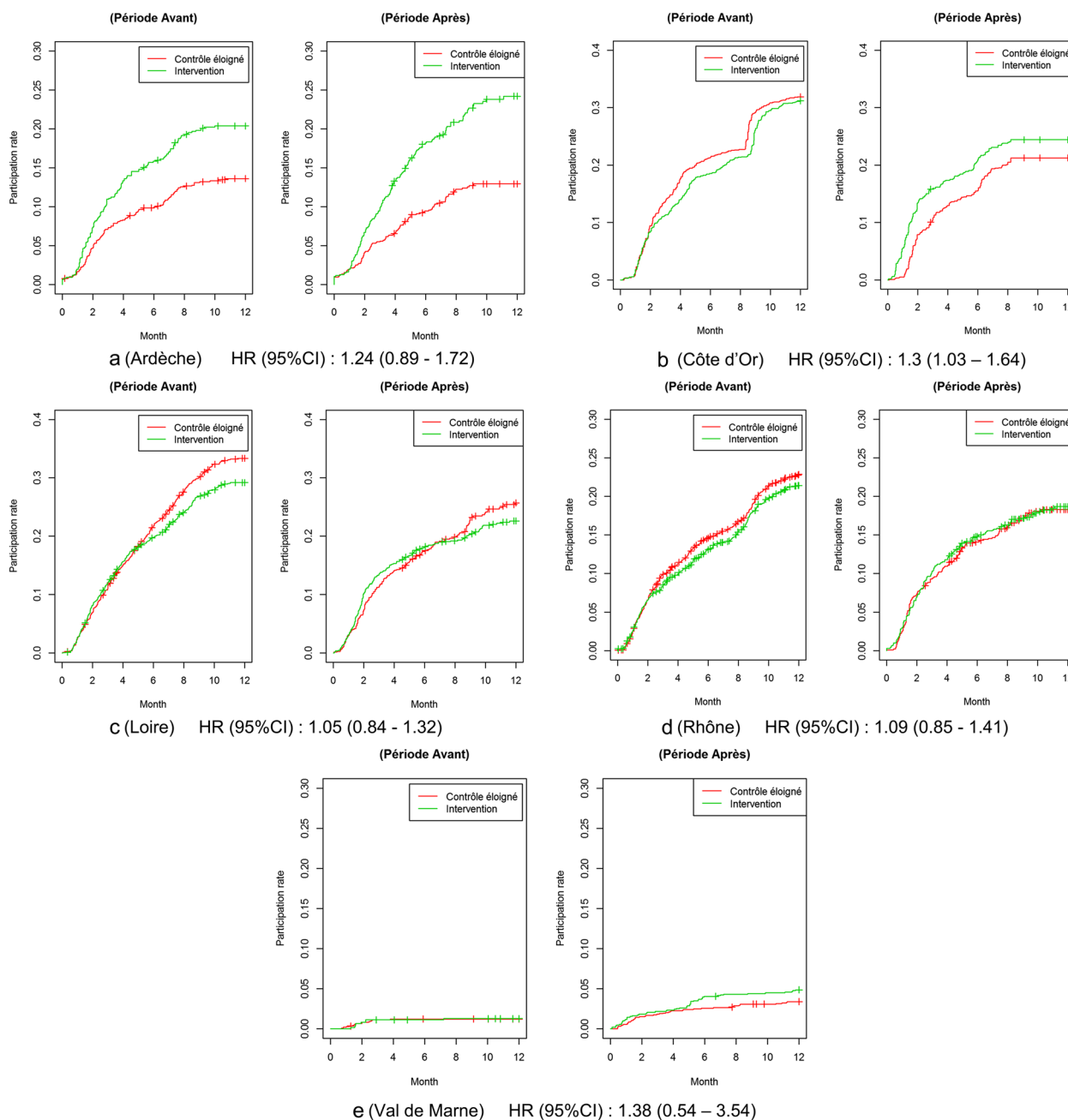


Fig. 3 Strata analyses: evolution of participation rate by time (Kaplan Meier curves) according to the group by districts. **a** (Ardèche) HR (95%CI): 1.24 (0.89—1.72). **b** (Côte d'Or) HR (95%CI): 1.3 (1.03 – 1.64). **c** (Loire) HR (95%CI): 1.05 (0.84—1.32), **d** (Rhône) HR (95%CI): 1.09 (0.85—1.41). **e** (Val de Marne) HR (95%CI): 1.38 (0.54 – 3.54)

the behavior of the institutions supposed to give navigators legitimacy: some were helpful and opened doors for him/her, while some were real obstacles for the navigation. Navigators had to develop two contextual modes of action to establish first contact with people and to address those issues: Navigators from Loire, Rhône and

Côte d'Or adopted a strategy of direct contact. This because the 3 navigators were already integrated in the intervention zone before the study. They were already known by a part of the population they were meeting. On the other hand, the difficulty was to be recognized as professionals: all 3 of them had to approach an institution

frequented by the inhabitants, which made it possible to legitimize their function. Subsequently, they came into contact with the population in various places of daily life (markets, mosque, bus stop). From the very first meeting they started discussing screening. The other strategy was that of the Val de Marne and Ardeche navigators. they were both foreign to their field of action before the study began. They needed to gain the trust of the population, and to do so, they needed to become visible. They felt that a direct contact could be considered intrusive and therefore counterproductive. One of the navigators ensured visibility by first helping NGO volunteers (meal distribution). He spoke of CRC screening only when he was well known by the people. The other one was the only navigator who had real difficulties in reaching the targeted population. His strategy was to hold permanent meetings and organize workshops. He presented the test to the people who came to meet him, never the other way around. No official institution helped him.

From these broad contextual characteristics each navigator invented her/his own original operating procedures. The populations in the intervention areas were all heterogeneous and therefore a community approach was difficult to apply. As a result, navigators favored the recruitment of part of the population, depending on their ethnicity or social level. Patients Navigators developed their mode of operation on the model of the “bricoleur “ (Do It Yourself building) in the sense of C. Levi-Strauss [27] (“ the universe of the Bricoleur is closed, and he often is forced to make do with whatever is at hand”, so that the bricoleur is able to perform a large number of diversified tasks). Navigators-Bricoleurs identify the tools in their environment and imagine how they will be useful to them. The skill of the navigator-bricoleur is to use the most appropriate tool in the most appropriate way for the situation.

Discussion

This study found a large and statistically significant effect of the Colonav Patient Navigation Program on deprived populations’ participation rate in CRC screening. This effect was estimated as an increase of 23% in participation in the population receiving the intervention. In addition, this study explored more broadly the interaction between the context and the intervention deployment.

The quantitative context analysis highlights the differences among the districts at the beginning of the study. Initial participation rates ranged from 30 to 0%. Even with such different contexts at the beginning of the intervention, the study underlines a positive (but not significant) effect of each of the navigators. The context analysis underlined that main contextual factors identified as impacting the navigators’ mode of operation

were: poverty (a major barrier to keeping healthy), language barrier (categorised as present or not) and behavior of the institutions supposed to give the navigators legitimacy (supportive or opposed). In this, our study confirms Ficella’s postulate on the PN, which implies a double recognition: that of peers but also that of Institution. On the other hand, the COLONAV study broadens the description of the mechanism implemented by navigation: It highlights that the low socio-economic level of certain populations, particularly in urban districts, was a ubiquitous feature, and shaped a part of the navigators’ mode of operation: here they had to spend much time in first resolving the social problems of individuals, before starting to accompany residents to CRC screening. But this problem-solving aspect was a mandatory step towards success in their action. Depending on their previous knowledge of the population (same culture, same place of residence, same language) navigators had different levels of facilities for approaching them, and also had different intrinsic abilities. So they developed different strategies to reach people, each with its own strengths and weaknesses. The common feature was that they all relied on the existing social network and that they had to adapt and be flexible to fit with their unpredictable and moving environment. The essence of Navigation is here to make do with what is already there. It does not establish a position of its own but is a link between the already existing systems.

Our results are consistent with the broad range of other published PN studies. effect of PN for CRC screening in USA has been estimated at $OR = 2.01$ IC95% (1.64–2.26) [28]. The only other French study assessed navigators who telephoned to deprived non-participants to enhance their participation in CRC screening [29]. The effect of the PN was estimated at an increase of 19% in participation. But the PN intervention was standardized (phone call procedures) unlike the Colonav study where PN were empowered to construct their job, to adapt it to the context and to their intrinsic characteristics. This study thus demonstrates the tremendous feasibility and operationality of broad PN.

The Cluster randomized design is another strength of this study, since it is adapted to population-based research, allowing it to avoid contamination bias. Another strength is the size of this study: 24,281 individuals were included, across 5 different French districts. The study included 4 different research teams from 5 disciplines. With such a large scale, the study succeeded in finding significant proof of the effectiveness of a French Patient Navigation Intervention for CRC screening among a deprived population.

The study also had limitations. The first was the unfortunate timing of the course of the study, which was

conducted at the same time as France changed the type of test for CRC screening from FOBT to Fecal Immunochemical Test (FIT). We had to face, in the middle of the study, a period where no tests of any kind were available. This explains the drop in participation rate between the before and the after comparison. Fortunately, the existence of control groups mitigated this effect in the results. And the effect of PN in those worst conditions remained positive, which increases the possibility of a greater effect under better conditions. The second limitation was the impossibility of having access to individual data for the target population. However, we believe that Population Health Intervention Research is by its essence ecological research. Qualitative analyses provide necessary and complementary information which is lacking in quantitative findings.

Conclusion

The Colonav study succeeded in demonstrating the effectiveness of Patient Navigation in France, for CRC screening. This is major step since PN interventions target deprived populations and France is one of the European countries with the highest socio-economic gradient. New studies should investigate this PN model, for other cancer screenings and broader health promotion goals, in order for health care equity to be achieved.

Supplementary Information

The online version contains supplementary material available at <https://doi.org/10.1186/s12885-022-10169-3>.

Additional file 1: Table S1. Multivariate analysis of the effect of the intervention on time to participate in the participating sub-group, with an ANOVA model adjusted on confusing variables (age, district and gender). **Table S2.** Ardèche. **Table S3.** Côte d'Or. **Table S4.** Loire. **Table S5.** Rhône. **Table S6.** Val de Marne.

Acknowledgements

The authors would like to thank the five Patient Navigators involved in this project for the wonderful work they did with the study's population; and the Local "Ligue Nationale contre le Cancer" association's stakeholders who received and welcomed the Navigators in their premises. They also would like to thank Duncan Fulton for translation and editing services, funded by the INSERM.

Reporting guidelines

This manuscript was written in accordance with the CONSORT extension for cluster trial guideline.

Authors' contributions

Conceptualization: FC, SR, CA, NL, MP, PA, VR, VB. methodology: AB, YB, FT, JRL, MO, JK, VD, NL, MP, SR, AD, PA, VR, VB. validation: AB, YB, FT, CA, JRL, MO, JK, VD, NL, MP, SR, AD, PA, VR, VB, FC. formal analysis: AB, YB, FT, JRL, MO, NL, MP, AD, VB. investigation: YB, JRL, NL, MP, AD, VB. writing (original draft preparation): AB, CA, SR. writing (review and editing): FC, MO, FT, JK, VD, AD, PA, VR, VB. supervision: AB, SR, FC, VB. funding acquisition: SR, FC, VB, NL, MP, PA, VR. The authors read and approved the final manuscript.

Authors' information

AB, FC and CA had full access to all of the data in the study and take responsibility for the integrity of the data and the accuracy of the data analysis. AB is the guarantor for the study.

Funding

This work was supported by the French National Cancer Institute (INCa) and the French National Association against Cancer (Ligue Nationale contre le Cancer) covered the cost of the study. The sponsors had no role in the study design, conduct, analysis and interpretation.

Availability of data and materials

The datasets generated and analysed during the current study are available from the corresponding author on reasonable request.

Declarations

Ethics approval and consent to participate

The study was approved by an institutional review board (Ethical Committee of Saint Etienne University Hospital, the 10th of January 2013), which waived the need for signed informed consent according to French law, since the study involved healthy people and proposed no treatment. All methods were carried out in accordance with relevant guidelines and regulations.

Consent for publication

NA.

Competing interests

None.

Received: 13 May 2022 Accepted: 29 September 2022

Published online: 06 January 2023

References

- Sung H, Ferlay J, Siegel RL, et al. Global Cancer Statistics 2020: GLOBOCAN Estimates of Incidence and Mortality Worldwide for 36 Cancers in 185 Countries. *CA Cancer J Clin.* 2021;71(3):209–49.
- Ferlay J, Colombet M, Soerjomataram I, et al. Cancer incidence and mortality patterns in Europe: Estimates for 40 countries and 25 major cancers in 2018. *Eur J Cancer.* 2018;103:356–87.
- Siegel RL, Miller KD, Goding Sauer A, et al. Colorectal cancer statistics, 2020. *CA Cancer J Clin.* 2020;70(3):145–64.
- Cunningham D, Atkin W, Lenz H-J, et al. Colorectal cancer. *Lancet Lond Engl.* 2010;375(9719):1030–47.
- PDQ Screening and Prevention Editorial Board. Colorectal Cancer Screening (PDQ[®]): Health Professional Version. 2022 Apr 21. In: PDQ Cancer Information Summaries [Internet]. Bethesda (MD): National Cancer Institute (US); 2002–. PMID: 26389266.
- Smith RA, Andrews KS, Brooks D, et al. Cancer screening in the United States, 2019: A review of current American Cancer Society guidelines and current issues in cancer screening. *CA Cancer J Clin.* 2019;69(3):184–210.
- European Colorectal Cancer Screening Guidelines Working Group, von Karsa L, Patnick J, et al. European guidelines for quality assurance in colorectal cancer screening and diagnosis: overview and introduction to the full supplement publication. *Endoscopy.* 2013;45(1):51–9.
- Essink-Bot M-L, Dekker E. Equal access to colorectal cancer screening. *The Lancet.* 2016;387(10020):724–6.
- Moutel G, Duchange N, Lièvre A, Orgerie MB, Jullian O, Sancho-Garnier H, Darquy S. Low participation in organized colorectal cancer screening in France: underlying ethical issues. *Eur J Cancer Prev.* 2019;28(1):27–32. <https://doi.org/10.1097/CEJ.0000000000000417>.
- Clarke N, McNamara D, Kearney PM, et al. The role of area-level deprivation and gender in participation in population-based faecal immunochemical test (FIT) colorectal cancer screening. *Prev Med.* 2016;93:198–203.

11. Pernet C, Dejardin O, Morlais F, et al. Socioeconomic determinants for compliance to colorectal cancer screening. A multilevel analysis. *J Epidemiol. Community Health*. 2010;64(4):318–24.
12. Mackenbach JP, Stirbu I, Roskam A-JR et al. Socioeconomic inequalities in health in 22 European countries. *N. Engl. J. Med*. 2008; 358(23):2468–2481.
13. Menvielle G, Kunst AE, Stirbu I, et al. Educational differences in cancer mortality among women and men: a gender pattern that differs across Europe. *Br J Cancer*. 2008;98(5):1012–9.
14. Kobayashi LC, Wardle J, von Wagner C. Limited health literacy is a barrier to colorectal cancer screening in England: evidence from the English Longitudinal Study of Ageing. *Prev Med*. 2014;61:100–5.
15. Wools A, Dapper EA, de Leeuw JRJ. Colorectal cancer screening participation: a systematic review. *Eur J Public Health*. 2016;26(1):158–68.
16. Jerant AF, Fenton JJ, Franks P. Determinants of racial/ethnic colorectal cancer screening disparities. *Arch Intern Med*. 2008;168(12):1317–24.
17. Percac-Lima S, Grant RW, Green AR, et al. A culturally tailored navigator program for colorectal cancer screening in a community health center: a randomized, controlled trial. *J Gen Intern Med*. 2009;24(2):211–7.
18. Sunny A, Rustveld L. The Role of Patient Navigation on Colorectal Cancer Screening Completion and Education: a Review of the Literature. *J Cancer Educ*. 2018;33(2):251–9.
19. Craig P, Dieppe P, Macintyre S, et al. Developing and evaluating complex interventions: the new Medical Research Council guidance. *BMJ*. 2008;337:a1655.
20. Allary C, Bourmaud A, Tinquaut F, et al. ColoNav: patient navigation for colorectal cancer screening in deprived areas - Study protocol. *BMC Cancer*. 2016;16:416.
21. Hawe P, Potvin L. What is population health intervention research? *Can J Public Health*. 2009;100(1):Suppl I8–14. <https://doi.org/10.1007/BF03405503>.
22. Bonell C, Fletcher A, Morton M, et al. Realist randomised controlled trials: a new approach to evaluating complex public health interventions *Soc. Sci Med*. 2012;75(12):2299–306.
23. Moore GF, Audrey S, Barker M, et al. Process evaluation of complex interventions: Medical Research Council guidance. *BMJ*. 2015;350:h1258.
24. Fletcher A, Jamal F, Moore G, et al. Realist complex intervention science: Applying realist principles across all phases of the Medical Research Council framework for developing and evaluating complex interventions. *Evaluation (Lond)*. 2016;22(3):286–303.
25. Glasgow RE, Magid DJ, Beck A, et al. Practical clinical trials for translating research to practice: design and measurement recommendations. *Med Care*. 2005;43(6):551–7.
26. Fiscella K, Ransom S, Jean-Pierre P, et al. Patient-reported outcome measures suitable to assessment of patient navigation. *Cancer*. 2011;117(15 Suppl):3603–17.
27. Lvi-Strauss C. *The savage mind*, University of Chicago Press, 1966.
28. Dougherty MK, Brenner AT, Crockett SD, et al. Evaluation of Interventions Intended to Increase Colorectal Cancer Screening Rates in the United States: A Systematic Review and Meta-analysis. *JAMA Intern Med*. 2018;178(12):1645–58.
29. Guillaume E, Dejardin O, Bouvier V, et al. Patient navigation to reduce social inequalities in colorectal cancer screening participation: A cluster randomized controlled trial. *Prev Med*. 2017;103:76–83.

Publisher's Note

Springer Nature remains neutral with regard to jurisdictional claims in published maps and institutional affiliations.

Ready to submit your research? Choose BMC and benefit from:

- fast, convenient online submission
- thorough peer review by experienced researchers in your field
- rapid publication on acceptance
- support for research data, including large and complex data types
- gold Open Access which fosters wider collaboration and increased citations
- maximum visibility for your research: over 100M website views per year

At BMC, research is always in progress.

Learn more biomedcentral.com/submissions

