

Recent discovery of an early 1st century sewn boat in Istria (Croatia): the Poreč 1 wreck from the harbour of *Parentium*

Figures



Figure 1. Location of Poreč and of the sites mentioned in this article (V. Dumas, CNRS, Aix Marseille University, CCJ).



Figure 2. View of the peninsula of Poreč, ancient *Colonia Iulia Parentium*. The square indicates the location of the archaeological trench along the southern waterfront (photo, R. Kosinožić).



Figure 3. View of the excavation near the Porta da Mar, Poreč (photo, Museum of Poreč Territory).



Figure 4. The remains of the Poreč 1 sewn boat resting to the south of the Roman quay made of large local limestone blocks (photo, Museum of Poreč Territory).

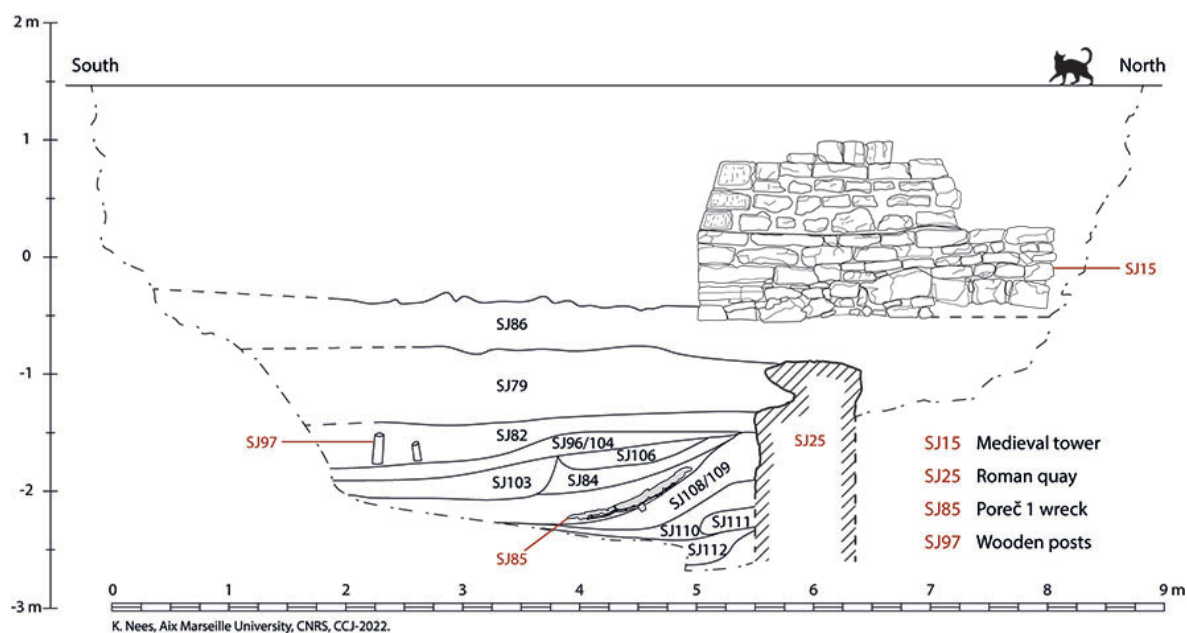




Figure 6. Orthoimage of the Poreč 1 wreck (photos, B. Brajković, Geoured, Museum of Poreč Territory; photogrammetric calculation, V. Dumas, CNRS, Aix Marseille University, CCJ).

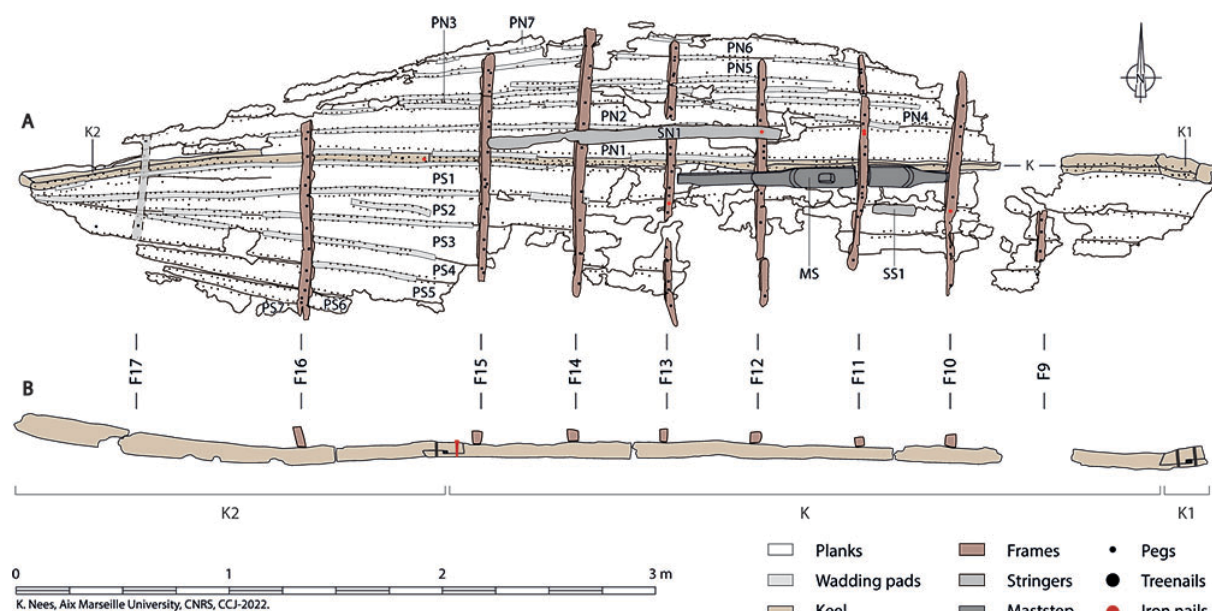


Figure 7. Poreč 1: A) General plan; B) Reconstructed longitudinal section (drawing, K. Nees, CNRS, Aix Marseille University, CCJ).

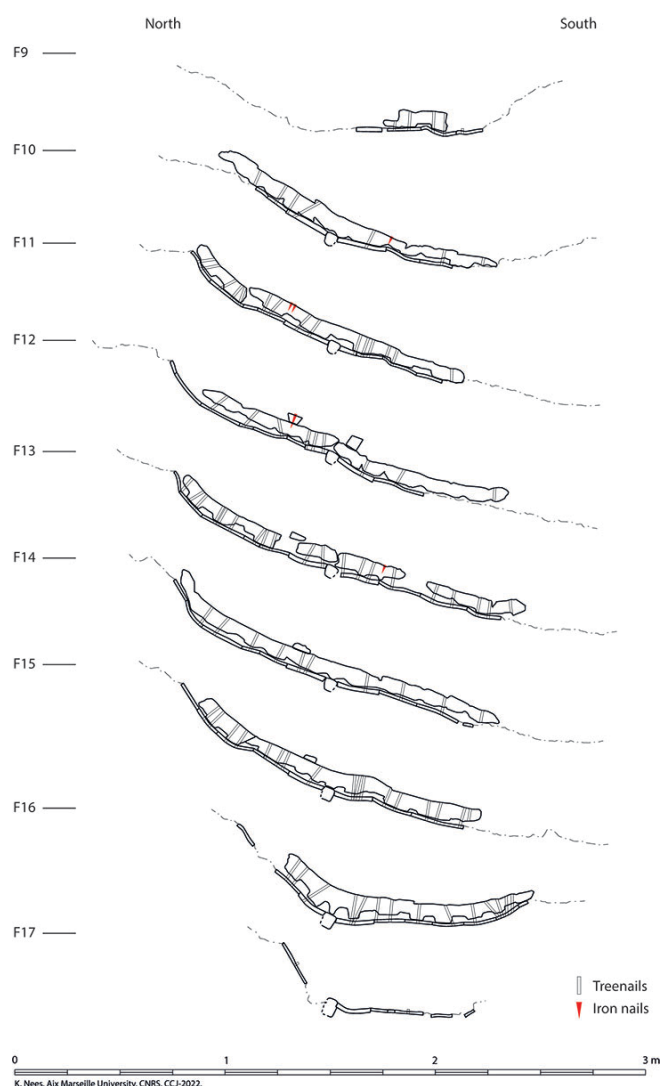


Figure 8. Poreč 1: Cross-sections at the frames (drawing, K. Nees, CNRS, Aix Marseille University, CCJ).



Figure 9. Poreč 1: The port side of the keel K (left) and transitional timber K2 (right), in the middle is the hook scarf; A and B) Details of the hook scarf with the horizontal key, the nail and treenail driven perpendicularly (photos, Ph. Soubias, CNRS, Aix Marseille University, CCJ).



Figure 10. Poreč 1: The port side of the westernmost end of the stern transitional timber K2 with the two mortise-and-tenons joints and detail of one joint. Note the triangular rabbet and the oblique channels for the ligatures (photos, Ph. Soubias, CNRS, Aix Marseille University, CCJ).



Figure 11. Poreč 1: View of the starboard side of the keel K (left) and transitional timber K1 (right) connected with a hook scarf (photos, Ph. Soubias, CNRS, Aix Marseille University, CCJ).

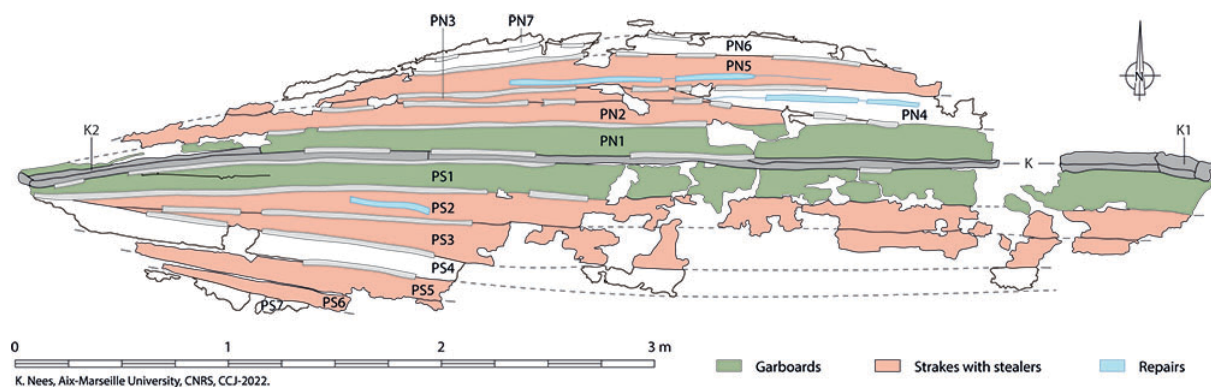


Figure 12. Poreč 1: Plan of the planking (drawing, K. Nees, CNRS, Aix Marseille University, CCJ).



Figure 13. Poreč 1: Detail of the sewing (photo, Ph. Soubias, CNRS, Aix Marseille University, CCJ).



Figure 14. Poreč 1: View of the stern end from the east. In the foreground, floor timbers F14 and F15 with its futtock F15N. Further towards the stern, the floor timber F16 (photo, Museum of Poreč Territory).



Figure 15. Poreč 1: Detailed view of the end of the floor timber F15 (left) and the futtock F15N of the port side (right). The two pieces are not joined but simply butted (photo, Ph. Soubias, CNRS, Aix Marseille University, CCJ).



Figure 16. Poreč 1: The wedge found underneath the floor timber F15 (photo, Ph. Soubias, CNRS, Aix Marseille University, CCJ).



Figure 17. Poreč 1: Detail of the quadrangular recesses with chamfers of the floor timber F16 (photo, Ph. Soubias, CNRS, Aix Marseille University, CCJ).

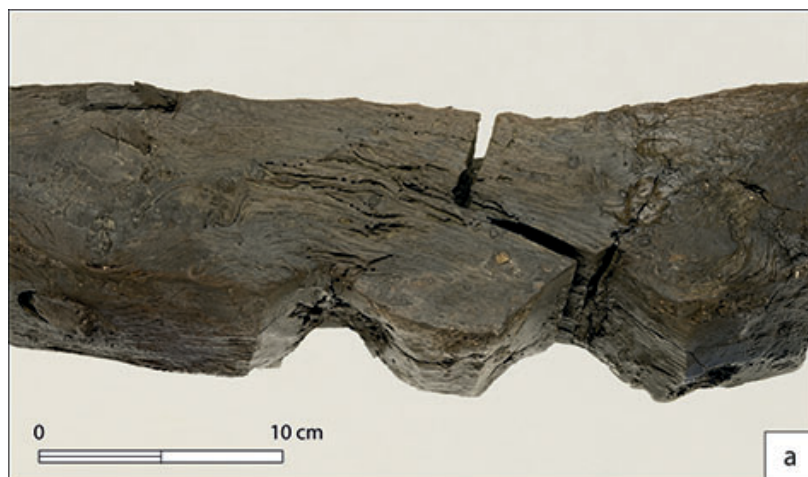


Figure 18. Poreč 1: Detail of the recesses without chamfers of the floor-timbers F10 (A) and F14 (B) (photos, Ph. Soubias, CNRS, Aix Marseille University, CCJ).



Figure 19. Poreč 1: View from the port side of the keelson/mast step (photo, Museum of Poreč Territory).



Figure 20. Poreč 1: The mast step; A) Detail of the recess to house the mast; B) Parallel curved grooves inscribed on the fore end (photos, Ph. Soubias, CNRS, Aix Marseille University, CCJ).

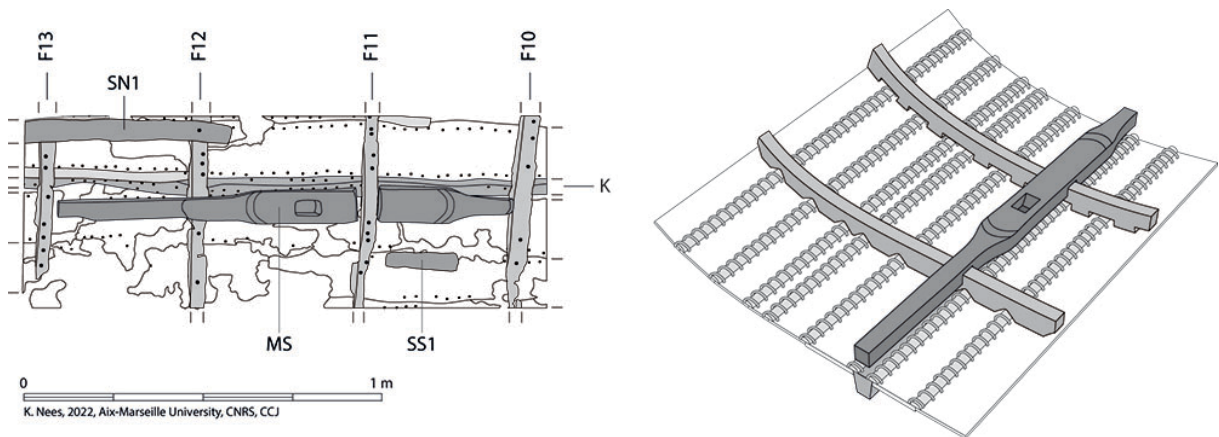


Figure 21. Poreč 1: Detail of the keelson/mast step and axonometric view (drawing, K. Nees, CNRS, Aix Marseille University, CCJ).

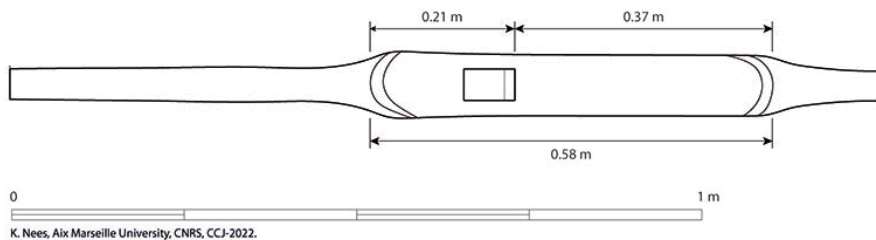


Figure 22. Poreč 1: The keelson/mast step with indication of its dimensions (drawing, K. Nees, CNRS, Aix Marseille University, CCJ).

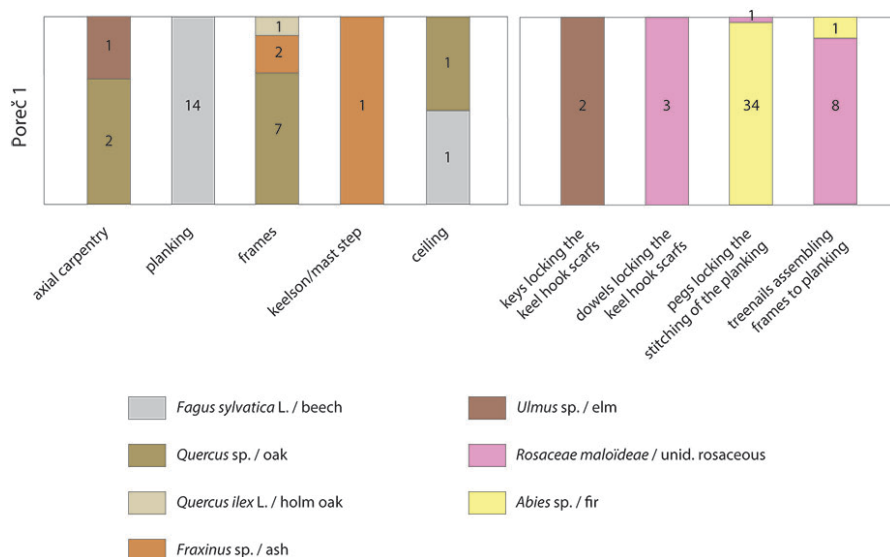


Figure 23. Poreč 1: Types of wood identified in the wreck.

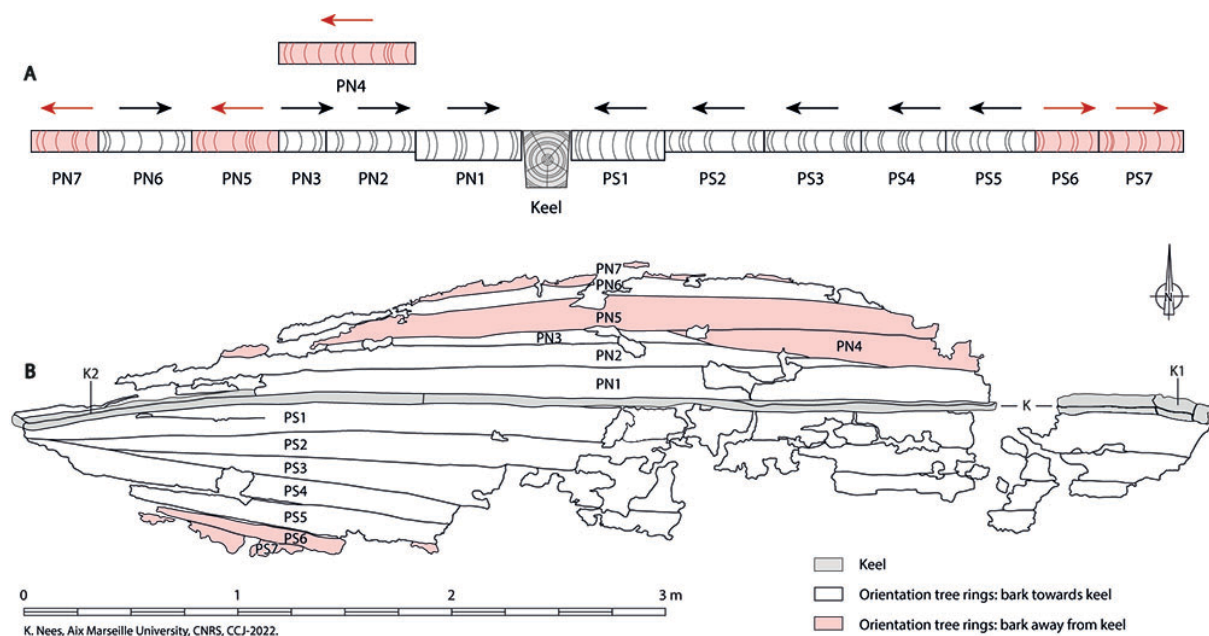


Figure 24. Poreč 1: Schematic section and plan showing the orientations of the tree rings in the planking (drawing, K. Nees, CNRS, Aix Marseille University, CCJ).

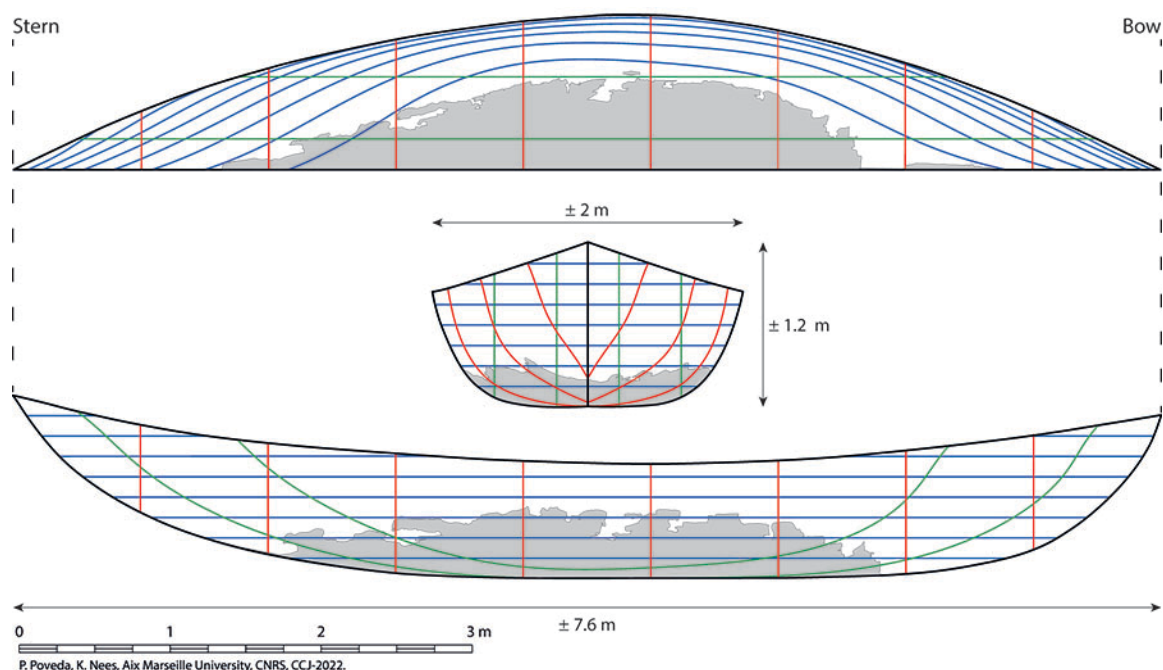


Figure 25. Poreč 1: Preliminary reconstruction of the hull lines (drawing, P. Poveda and K. Nees, CNRS, Aix Marseille University, CCJ).