



**HAL**  
open science

## Obsidian in the Caribbean Islands? Mysterious Ceramic Age glass artefacts in the Lesser Antilles

Arthur Leck, Ludovic Bellot-Gurlet, Guillaume Carazzo, Bernard Gratuze, Jessica Langlade, François-Xavier Le Bourdonnec, Céline Bressy-Leandri, Isaac Shearn, Christian Stouvenot, Alain Queffelec

### ► To cite this version:

Arthur Leck, Ludovic Bellot-Gurlet, Guillaume Carazzo, Bernard Gratuze, Jessica Langlade, et al.. Obsidian in the Caribbean Islands? Mysterious Ceramic Age glass artefacts in the Lesser Antilles. 2023. halshs-04382469

**HAL Id: halshs-04382469**

**<https://shs.hal.science/halshs-04382469>**

Preprint submitted on 9 Jan 2024

**HAL** is a multi-disciplinary open access archive for the deposit and dissemination of scientific research documents, whether they are published or not. The documents may come from teaching and research institutions in France or abroad, or from public or private research centers.

L'archive ouverte pluridisciplinaire **HAL**, est destinée au dépôt et à la diffusion de documents scientifiques de niveau recherche, publiés ou non, émanant des établissements d'enseignement et de recherche français ou étrangers, des laboratoires publics ou privés.



Distributed under a Creative Commons Attribution 4.0 International License

# Obsidian in the Caribbean Islands? Mysterious Ceramic Age glass artefacts in the Lesser Antilles.

Arthur Leck<sup>\*1,2</sup>, Ludovic Bellot-Gurlet<sup>3</sup>, Guillaume Carazzo<sup>4</sup>, Bernard Gratuze<sup>5</sup>, Jessica Langlade<sup>6</sup>, François-Xavier Le Bourdonnec<sup>2</sup>, Céline Leandri<sup>7,8</sup>, Isaac Shearn<sup>9</sup>, Christian Stouvenot<sup>10,11</sup> & Alain Queffelec<sup>\*1</sup>

1. UMR5199 PACEA, CNRS, Univ. Bordeaux, Ministère de la Culture, Pessac, France ;
2. UMR6034 Archéosciences Bordeaux, CNRS, Univ. Bordeaux Montaigne, Univ. Bordeaux, Pessac, France ;
3. UMR8233 MONARIS, Sorbonne Université, CNRS, Paris, France ;
4. Institut de Physique du Globe de Paris (IPGP), CNRS, Univ. Paris Cité, Paris, France ;
5. UMR7065 IRAMAT-CEB, CNRS, Univ. d'Orléans, Orléans, France ;
6. UAR3113, Univ. Brest, CNRS, Plouzané, France ;
7. SRA Corse, Ministère de la Culture, Ajaccio, France ;
8. UMR5608 TRACES, CNRS, Univ. Toulouse, Ministère de la Culture, Toulouse, France ;
9. Morgan State University, Baltimore, Maryland, USA ;
10. SRA Guadeloupe, Ministère de la Culture, Baillif, France ;
11. UMR8096 ARCHAM, CNRS, Université Paris 1 Panthéon-Sorbonne, Paris, France.

Corresponding authors: Arthur Leck (arthur.leck@gmail.com) & Alain Queffelec (alain.queffelec@u-bordeaux.fr)

## Abstract

The Caribbean islands witnessed a population expansion of horti-ceramicists during the Early Ceramic Age (ca. 500 BC to 750 AD) from the Orinoco Valley to Puerto Rico. We examined 18 lithic artefacts from Guadeloupe and Dominica, initially thought to be obsidian, a material believed to be absent from those islands. We investigated the volcanic or meteoritic origin of this unique and yet unknown material through observation (binocular, SEM, microtomography) and geochemical analyses (PIXE, SEM-EDS, ED-XRF, EPMA, LA-ICP-MS). Elementary analyses rule out the hypothesis of an origin from a meteoritic impact (i.e. identification as tektites). Most of the artefacts have an andesitic composition (< 63% SiO<sub>2</sub>), which appears to be unique among 'massive' glasses. The only artefact with a rhyolitic composition has been traced back to the Guadeloupe's Volcan du Tuf where glassy fragments have been collected and analysed. The geological source of the other vitreous artefacts that exhibit an andesitic composition could be from a sub-local subduction-arc volcanism (maybe from Martinique), although no volcanic vitreous material of this kind has ever been reported worldwide. These results once again highlight the regional mobility of Early Ceramic populations, the production of standard lithic products using a highly original, albeit low-quality, local lithic resource, and provide valuable references for future identification of similar materials.

## Keywords

Obsidian, Andesite, Lesser Antilles, Ceramic Age, Impactites, Tektites, Sourcing

# Introduction

36 The archipelago of Caribbean islands was settled late in the history of the peopling of America, firstly by  
37 hunter-gatherers during what is called the Archaic Age, and from ca. 500 B.C onwards, by horti-ceramicists  
38 originating from the Lower Orinoco during what is called the Ceramic Age (Keegan et al. 2013; Reid 2018). This  
39 migration of Amerindians during the Early Ceramic period, producing specific ceramics grouped in the Saladoid  
40 serie (Rouse 1992), has been very successful in colonising the archipelago up North to Puerto Rico, while  
41 remaining strongly homogeneous in their way of life as seen in their settlement patterns, food production and  
42 consumption, and production of goods such as ceramics and lapidary ornaments (Bérard 2013; Queffelec 2023).  
43 Their culture underwent a transformation from ca. 750 AD, evolving into more distinct regional groups marked by  
44 varying settlement patterns, shifts in material culture, and alterations in societal organisation (Hofman 2013). Then,  
45 during the Recent Ceramic period, the remaining part of the Caribbean archipelago was settled until the arrival of  
46 Europeans in the late 15th century.

47 During the Ceramic Age, the non-perishable material culture is mainly formed of ceramics for diverse  
48 types of pots, shells for tools and adornments, and lithics for cutting, scraping and grinding tools, as well as personal  
49 adornments. The production of flaked stone tools, of particular interest for this work, is mainly driven by production  
50 of small unretouched flakes by bipolar percussion (Walker 1979; Bérard 2011) to be used for different activities  
51 including the production of teeth for manioc graters (Walker 1979). The principal raw materials for flaked industry  
52 are flint and jaspers, respectively coming mainly from Antigua and from local sources near the archaeological sites  
53 (Knippenberg 2007; Queffelec et al. 2023). The provenance of the lithic raw materials used to produce tools,  
54 ornaments such as beads and pendants, or other symbolic artefacts like trigonoliths, have been one of the main  
55 proxy employed by archaeologists to study the regional mobility and networks in the Caribbean islands (e.g. Cody  
56 1993; Knippenberg 2007; Garcia-Casco et al. 2013; Knaf et al. 2021; Queffelec 2022; Queffelec 2023).

57 When investigating the origins of lithic raw materials to gain a deeper understanding of the “litho-space”  
58 of ancient societies (Delvigne et al. 2021), one invaluable resource on a global scale is the natural glass known as  
59 obsidian. This vitreous silica-rich volcanic rock originates from the cooling of a very viscous magma, preventing its  
60 crystallisation (Tuffen et al. 2020). It has a geochemical composition specific to the volcano — and even to the  
61 eruption — which produced the magma (Shackley 1998, p.5). Obsidian has served a dual purpose, having been  
62 widely utilised by past civilizations for its knapping capabilities and by archaeologists for its high potential in  
63 geochemical fingerprinting (e.g. Cann and Renfrew 1964; Poupeau et al. 2010). Despite the extensive use of  
64 obsidian in various regions across the Americas, proving highly effective in unveiling insights into the past networks  
65 and mobility of people (Glascock 2002; Golitko et al. 2012; Mills et al. 2013), it was a prevailing consensus among  
66 archaeologists and geologists that the Caribbean islands are devoid of such raw material despite the volcanic origin  
67 of most islands in the Lesser Antilles. The volcanic arc of the Lesser Antilles originates from the subduction of the  
68 Atlantic plate beneath the Caribbean plate. This geological process predominantly produces andesitic magma,  
69 which differs from the silica-rich rhyolitic magma essential to the formation of obsidian *sensu stricto*. To the best of  
70 our knowledge, no andesitic volcanic glass suitable for flaking has been documented in archaeological or geological  
71 literature. Such andesitic glass is exceptionally rare and typically forms exclusively due to cosmic impacts, either  
72 as impactites or tektites. Impactites are terrestrial rocks formed by the high energy and pressure generated by a  
73 high velocity, massive asteroid or comet impact (Osinski and Pierazzo 2013). They primarily record the  
74 geochemistry of the impacted material and can thus exhibit considerable compositional variation. With large  
75 impacts, some material may be ejected into the atmosphere, where they rapidly cool and vitrify before falling back  
76 to Earth hundreds or even thousands of kilometres from the impact site - these are known as tektites (Osinski and  
77 Pierazzo 2013). Tektites, as micro-fragments in deep-sea deposits, have been identified in the southern Caribbean  
78 (Barbados), marking the southernmost extent of the North-East American tektite field (Glass et al. 1984). Certain  
79 rocks discovered in Haiti could also be linked to a meteorite impact, one that occurred around the Cretaceous-  
80 Tertiary transition and was responsible for the Chicxulub crater in the Yucatan. However, this interpretation remains  
81 contentious (Jéhanno et al. 1992; Kring and Boynton 1992), and in any case, these rocks are way too small to be  
82 used for knapping. The recent discovery of a new field of tektites of andesitic composition in Belize, referred to as  
83 “belizites”, shakes things up: the largest of these tektites can form nodules a few centimetres in diameter (Rochette  
84 et al., 2021 figure 2).

85 In this article, we present the first-ever identification of archaeological stone tools made of natural glass  
86 coming from several archaeological sites in Guadeloupe and Dominica. A thorough description of these artefacts  
87 is proposed, as well as geochemical and mineralogical characterization combining several analytical techniques.

88 Most of these artefacts being vitreous andesite, major questions have been raised about their geological and  
89 geographical origin. As one of the artefacts was made of obsidian, we collected a sample of rhyolitic glass that had  
90 been identified in the eastern part of Guadeloupe to determine whether it was the source material used. Based on  
91 the detailed characterization achieved, we are investigating the origin of this hitherto unknown raw material and its  
92 distribution in several archaeological sites from the Ceramic Age.

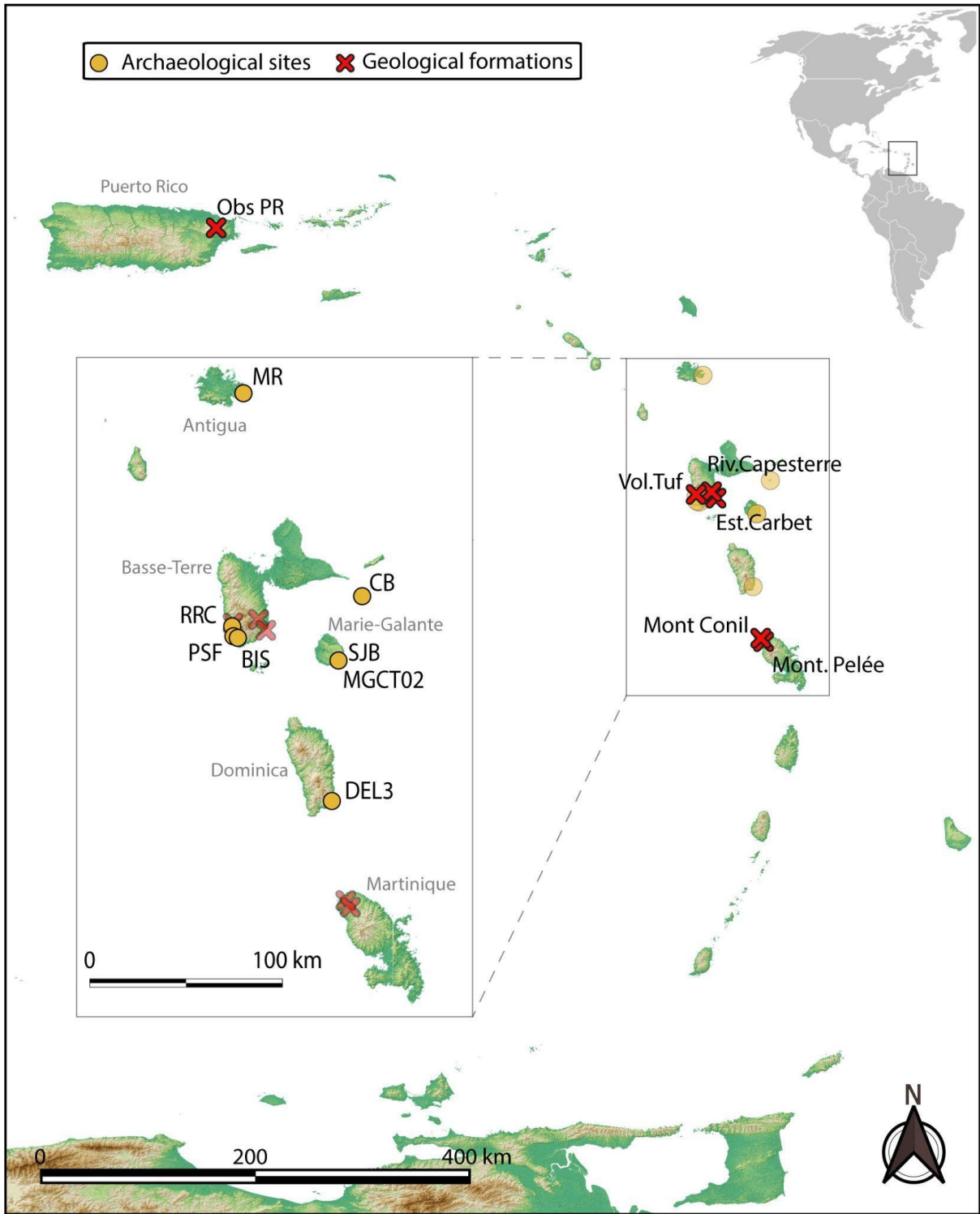
## 93 Material and methods

94 For the sake of reproducibility and transparency, note that we use throughout the text the MeRIT system as per  
95 Nakagawa et al. (2023): initials of authors, but also of acknowledged people, are used to precisely identify individual  
96 contributions.

### 97 *Archaeological artefacts*

98 Nineteen archaeological artefacts from eight Ceramic Age sites, made of natural glass, were identified in  
99 the literature (Table 1 and Figure 1). We were able to access and scrutinise sixteen of these (Figure 2). Most of  
100 them come from development-led archaeology and were initially identified thanks to the vigilant efforts of CS in  
101 monitoring grey literature sources.

102



103

104 Figure 1 Map indicating the locations of the archaeological sites from which the artefacts originate, and the  
 105 locations of the geological deposits that have been sampled (Guadeloupe and Puerto Rico) or are scheduled for  
 106 sampling but already used as comparative data (Martinique). SJB and MGCT02 are located on the same spot as  
 107 the sites are only a few tens of metres apart.

**Artefacts from archaeological sites**

Sample Code	Site	City	Island	Longitude	Latitude	Period	Bibliography	Mass (g)	Type	SEM-EDS	PIXE	EPMA	LA-ICP-MS	ED-XRF	Raman	Microtomography
Bis-01	Bisdary	Gourbeyre	Basse-Terre	-61.709	15.988	Early Ceramic	Romon et al., 2006	1.312	Flake		X			X		X
Bis-02	Bisdary	Gourbeyre	Basse-Terre	-61.709	15.988	Early Ceramic	Romon et al., 2006	2.21	Flake	X	X			X		X
Bis-03	Bisdary	Gourbeyre	Basse-Terre	-61.709	15.988	Early Ceramic	Romon et al., 2006	4.318	Nucleus		X	X	X	X	X	X
Bis-04	Bisdary	Gourbeyre	Basse-Terre	-61.709	15.988	Early Ceramic	Romon et al., 2006	2.367	Flake	X	X			X	X	X
RRC-01	Ruelle Roches Caraïbes	Baillif	Basse-Terre	-61.736	16.038	Early Ceramic	Bonnissent & Chancerel, 2001	2.733	Flake		X			X	X	X
RRC-02	Ruelle Roches Caraïbes	Baillif	Basse-Terre	-61.736	16.038	Early Ceramic	Bonnissent & Chancerel, 2001	5.504	Undetermined	X	X			X	X	X

MGCT02-1	Tourlourous	Capesterre-de-Marie-Galante	Marie-Galante	-61.224	15.889	Early Ceramic	Colas, 2002	1.394	Flake		X			X	X	X
MGCT02-2	Tourlourous	Capesterre-de-Marie-Galante	Marie-Galante	-61.224	15.889	Early Ceramic	Colas, 2002	4.063	Flake	X	X			X		X
MGCT02-3	Tourlourous	Capesterre-de-Marie-Galante	Marie-Galante	-61.224	15.889	Early Ceramic	Colas, 2002	N.A.	Lost							
MGCT02-4	Tourlourous	Capesterre-de-Marie-Galante	Marie-Galante	-61.224	15.889	Early Ceramic	Colas, 2002	2.792	Nucleus		X			X		X
MGCT02-5	Tourlourous	Capesterre-de-Marie-Galante	Marie-Galante	-61.224	15.889	Early Ceramic	Colas, 2002	0.156	Flake	X	X			X		X
MGCT02-6	Tourlourous	Capesterre-de-Marie-Galante	Marie-Galante	-61.224	15.889	Early Ceramic	Colas, 2002	16.896	Flake		X	X	X	X		X
MGCT02-7	Tourlourous	Capesterre-de-Marie-Galante	Marie-Galante	-61.224	15.889	Early Ceramic	Colas, 2002	2.682	Flake	X	X			X		X
CB-050a	Caille à Bélasse	Terre de Bas	Ilets de Petite Terre	-61.11	16.17	Late Ceramic	Gagnepain, 2007	0.901	Flake	X	X			X	X	X
CB-051a	Caille à Bélasse	Terre de Bas	Ilets de Petite Terre	-61.11	16.17	Late Ceramic	Gagnepain, 2007	0.299	Flake	X	X			X		X

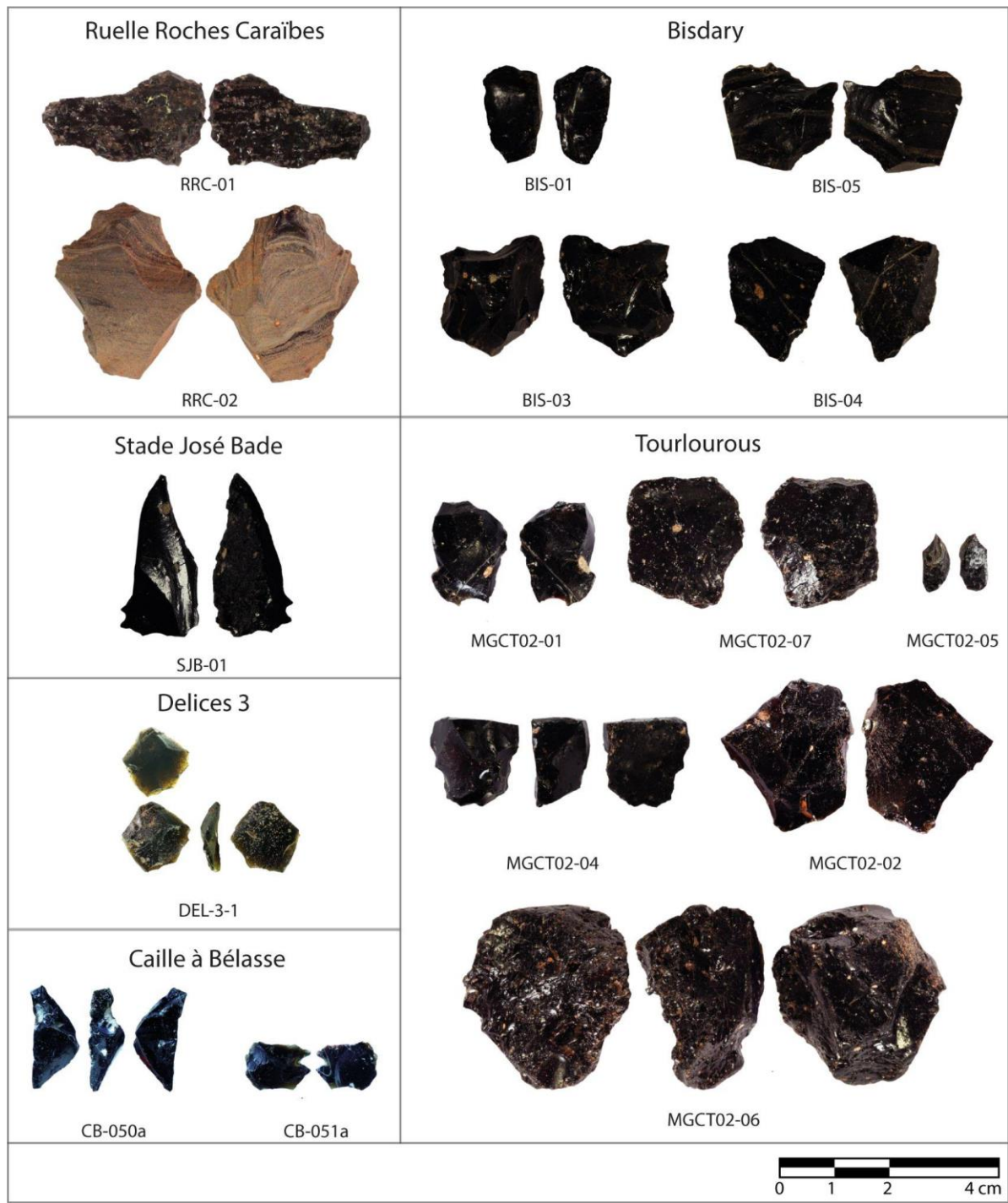
DEL-3-1	Delices 3	Saint Patrick Parish	Dominique	-61.256	15.275	Early Ceramic	Shearn, 2014	0.373	Flake	X				X		X
SJB-1	Stade José Bade	Capesterre-de-Marie-Galante	Marie-Galante	-61.224	15.889	Early Ceramic	Serrand, 2016		Flake					pXRF	X	
PSF-1	Place Saint François	Basse-Terre	Basse-Terre	-61.73	15.995	Early Ceramic	Sellier-Ségard, 2001		Flake (Lost)		X					
Not Included Yet	Mill Reef+	Saint Philip	Antigua	-61.679	17.057	Middle/Late Ceramic	Murphy, 1999		Nucleus							

109

Samples from geological formations											
Sample Code	Site	City	Island	Longitude	Latitude	Type of rock	SEM-EDS	PIXE	EPMA	LA-ICP-MS	ED-XRF
Volc.Tuf	Volcan du Tuf	Vieux-Habitants	Basse-Terre	-61.734	16.051	Rhyolite	X	X	X	x	X
Riv.Capesterre	Rivière de Capesterre	Capesterre-Belle-Eau	Basse-Terre	-61.609	16.072	Andesite					X
Est.Carbet	Embouchure du Grand-Carbet	Capesterre-Belle-Eau	Basse-Terre	-61.574	16.021	Andesite					X
BoisJoli	Bois Joli	Terre-de-Haut	Les Saintes	-61.609	16.072	Andesite					x
ObsPR	Yunque National Forest		Puerto Rico	-65.777	18.299	Rhyolite	X		x	X	X

110 Table 1 List of archaeological and geological sites with volcanic glass artefacts or glassy geological samples (+: yet to be confirmed) and their location. Bis-05 and MGCT02-3  
111 were inventoried but are now lost. PSF-1 was analysed in PIXE but is now lost. SJB-1 could only be analysed by pXRF during a preliminary study and could not be brought to  
112 the laboratory for logistical reasons.





113

114

Figure 2 Macrophotographs of the sixteen glassy artefacts recovered from six archaeological sites.

115

Out of the nineteen artefacts, seventeen originate from archaeological sites situated in Guadeloupe. Bisdary is "located at an elevation of 100 metres on the foothills of the Caribbean Mountains, 1 kilometre from the sea" (Romon 2004). This site underwent surveying in 2004 and subsequent excavation in 2006 revealing the remains of a Cedrosan Saladoid site dating back to approximately 500-800 cal. AD. In addition to its unique geographical location, quite far from the shore for this period, this site yielded five archaeological objects recorded as being made of "obsidian" (of which only four were found in the curated collection so far) (Fouéré 2006, p.34). The site of Tourlourous, located near the southwestern shore of Marie-Galante, is also attributed to the Cedrosan Saladoid (Colas 2002). Seven archaeological artefacts made of natural glass were identified during the excavation, and were analysed in 2007 in a preliminary project, but we only recovered six of them during our recent study. Excavated in the adjacent parcel of Tourlourous in 2014, the Stade José Bade is considered to be part of the

123

125 same site (Sellier-Segard and Casagrande 2016). One flake made of a similar glassy material has been found on  
126 the site, regrettably, it comes from levels containing a mixture of Cedrosan Saladoid and Troumassan  
127 Troumassoid artefacts. Place Saint François was excavated in 2001, just in front of the cathedral of Basse-Terre,  
128 and is interpreted as a Cedrosan Saladoid occupation (Sellier-Ségard 2001). Similarly, the Ruelle des Roches  
129 Caraïbes site, excavated in 2001, a few kilometres south of Volcan du Tuf, yielded two glassy artefacts from the  
130 Cedrosan Saladoid levels (Bonnissent and Chancerel 2001). The Caille à Bélasse site is the only Late Ceramic  
131 site having yielded glassy artefacts. It is interpreted as a Troumassan Troumassoid settlement and located on  
132 the Ilets de Petite Terre in the southwestern part of the Guadeloupean archipelago (Gagnepain 2007).

133 Two artefacts were discovered outside Guadeloupe. One was unearthed 20-30 cm below the surface by IS, in  
134 the site called Delices 3, on the southwest coast of Dominica (Shearn 2014, p.318). It is attributed to a Cedrosan  
135 Saladoid occupation. Additionally, there's a "small reduced core" designated as "obsidian" at the Mill Reef site  
136 (Antigua) (Murphy 1999, p.208) which could not be included in the present study. It is worth noting that there are  
137 mentions of other volcanic glass in the literature, but it seems that these are all misidentifications. A blade from  
138 the Maruca site in Puerto Rico was described as obsidian (Febles 2004; Rodríguez Ramos 2013) despite being  
139 identified initially as black chalcedony (Rodríguez 2001) and subsequently confirmed as such (Rodríguez-Ramos,  
140 comm. pers.to AQ 2020). In Martinique, a report on the Early Saladoid site of Fond-Brûlé listed nine "volcanic  
141 glass" artefacts (Mattioni, 1982). However, upon a thorough examination of the complete archaeological  
142 collection, this identification can be discarded, since every artefact photographed in the report has been found in  
143 the curated collection, and there is not a single volcanic glass artefact (black jaspers and flints are present).

144 All the sixteen studied artefacts are small flakes and nuclei originating from bipolar percussion technique (Figure  
145 S1), as already noted by Fouéré (2006) for those found in Bisdary site. They do not differ significantly from  
146 artefacts made of other raw materials in the respective sites. Technical drawings and surface views from the 3D  
147 models acquired by microtomography are presented in Supplementary Information (Figure S1 and S2) to support  
148 this interpretation.

149 Finally, it must be noted that AQ conducted a survey of the Caribbean archaeological community by email and  
150 during the IACA 2022 congress. None of the respondents (see Acknowledgements) never saw a single black  
151 vitreous artefact during their career in the Caribbean islands, and no participant of the conference came forward  
152 either to say so.

## 153 *Geological volcanic glass*

154 Volcanic glass worldwide is mostly of rhyolitic composition and is referred to as obsidian. Rhyolitic rocks are very  
155 scarce in the Lesser Antilles, with only three to four occurrences with no description of obsidian (Smith et al. 1980;  
156 Le Guen de Kerneizon et al. 1982). The only described obsidian, dated to 325 ka, is located in the Volcan du Tuf  
157 area (Basse-Terre, Guadeloupe) and consists of a brecciated dyke containing perlitic obsidian originating from  
158 maar eruptive activity (Gadalia et al. 1988). Our fieldwork enabled us to identify the location of this obsidian  
159 source in the commune of Vieux-Habitants (Basse-Terre, Guadeloupe), on the edge of the Volcan du Tuf maar  
160 (Table 1). Several samples were taken, all with very poor knapping qualities (Figure S3).

161 A lone obsidian block from Puerto Rico is known to exist, having been discovered by a local worker while clearing  
162 a drainage ditch beside the PR 191 road in the El Yunque national forest (Walker pers. com. to AQ 2022). Despite  
163 additional fieldwork conducted in the area, no other blocks matching this description were located (Knippenberg  
164 pers. com. to AQ 2022). Regrettably, the precise geological origin of this high-quality obsidian block, provided by  
165 JW and SK, therefore remains unknown. While there is documented evidence of a silicic suite in the northeastern  
166 Antilles, primarily dating back to the Albian age ( $113.0 \pm 1.0$  Ma to  $100.5 \pm 0.9$  Ma), and found in Puerto Rico and  
167 the Virgin Islands (Jolly et al., 2008), the composition of these rocks, predominantly rhyolites, does not align with  
168 that of our sample (ObsPR). Even though these Albian rocks have likely undergone significant devitrification due  
169 to their age, this observation underscores the capacity of the tectonic conditions in this particular region of the  
170 Antilles to generate high-silica rocks similar to the ObsPR sample analysed in this study.

171 In addition to our search for obsidian from the Volcan du Tuf, we carried out a prospecting campaign in the  
172 Guadeloupe archipelago to locate vitreous andesitic material. Based on data from the geological map and  
173 indications from local prospectors, we identified and collected three deposits of glassy andesitic rocks trapped in  
174 ash deposits in the Capesterre river and at the estuary of the Grand-Carbet river (Capesterre-Belle-Eau, Basse-  
175 Terre, Guadeloupe) and at Bois Joli (Terre-de-Haut, Saintes archipelago, Guadeloupe) (Table 1). Unfortunately,

176 none of these deposits contained glassy rocks massive enough to be knapped and potentially matching the  
177 material of the studied artefacts.

178

## Methods

179 All samples underwent macroscopic and binocular observations. The various methods of analysis applied to each  
180 sample are reported in Table 1. The artefact from Stade José Bade (SJB) could only be analysed by portable X-  
181 Ray Fluorescence (pXRF) because it remained in Guadeloupe. This pXRF analysis confirmed its andesitic  
182 composition.

183 AQ conducted binocular observations using a Leica Z16APO to observe the texture and the structure of samples,  
184 as well as the distribution of phenocrysts. Photographs were taken with a Leica Flexacam C1 camera and the  
185 LAS X 5.0 software.

186 LBG and CL performed non-destructive elemental analysis by Particle-Induced X-ray Emission (PIXE) on the  
187 AGLAE facility (Calligaro et al. 2002) using the procedures presented in Bellot-Gurlet *et al.* (1999).

188 AL and AQ observed and analysed the artefacts by Scanning Electron Microscope (SEM) coupled with Energy  
189 Dispersive Spectroscopy (EDS) in a JEOL IT500HR electron microscope (FEG source). The SEM images and  
190 EDS spectra were acquired without carbon coating, in a low-vacuum mode (here 40 Pa). The images were  
191 acquired with a backscattered electron detector, while the EDS analysis were performed with two Oxford Ultimex  
192 100 detectors at 20 kV for 30 s, producing spectra with 4.0 - 4.5 million counts.

193 AL conducted an analysis of the artefacts and geological samples using Energy Dispersive X-Ray Fluorescence  
194 (ED-XRF) on a Hitachi SEA 6000vx device. This device is equipped with a rhodium source (50kV/1mA) and a  
195 Vortex SDD detector, and a specialised protocol was developed specifically for the study of silica-rich  
196 archaeological artefacts (Leck et al. 2018; Leck 2022). The PCA was carried out using CoDaPack software  
197 (Comas and Thió-Henestrosa 2011). The data were prior transformed by a centred log ratio transformation  
198 (Aitchison 2003).

199 Four micro-samples were prepared for Electron Microprobe Analyses (EPMA) and Laser Ablation - Inductively-  
200 Coupled Plasma - Mass Spectrometry (LA-ICP-MS) analyses by AQ. EPMA and LA-ICP-MS analyses were only  
201 conducted on a very limited selection of samples: three of them were cut with a wire saw (Well3500) and epoxy  
202 resin (Araldite 2020): two from two rather big archaeological artefacts for which the shape would not be altered  
203 by the sampling (BIS-03 and MGCT02-06), one from the natural glass from Puerto Rico. Several glass fragments  
204 from Volcan du Tuf were also impregnated in epoxy resin. All samples were abraded with silicon carbide discs  
205 and polished with diamond paste. We obtained the official authorization of cutting small sub-samples from both  
206 archaeological artefacts via the French Ministry of Culture.

207 EPMA and LA-ICP-MS were conducted to obtain accurate geochemical composition of both major, minor and  
208 trace elements. JL determined the major-element compositions of the glasses by EPMA analysis using a Cameca  
209 SX100 from the *Microsonde Ouest* platform using wavelength dispersive spectrometers at 15 KV accelerating  
210 voltage, 10–12 nA beam current, and a spot size ranging from 10 to 20 µm. Minerals (wollastonite [Si, Ca],  
211 orthoclase [K], albite [Na], apatite [P]), oxide (MnTiO<sub>3</sub> [Mn, Ti]), Al<sub>2</sub>O<sub>3</sub> [Al], Fe<sub>2</sub>O<sub>3</sub> [Fe], Cr<sub>2</sub>O<sub>3</sub> [Cr], FeS<sub>2</sub> [S], etc.),  
212 and metal standards (Ni) were used for calibration. In order to avoid the heterogeneity effects induced by small  
213 crystals or inclusions, the compositions of the glasses given here are averages of 2 to 6 analyses depending on  
214 the sample. BG performed the LA-ICP-MS measurements using a Thermo Fisher Scientific ELEMENT XR mass  
215 spectrometer with a linear dynamic range of twelve orders of magnitude thanks to the combination of a Faraday  
216 detector and a dual-mode SEM detector. The laser was a Resonetics M50E excimer laser operating at a  
217 wavelength of 193 nm, 5mJ and a repetition rate of 10 Hz. The sampling cell is flushed with an argon/helium glass  
218 flow of 1 l/min Ar + 0.65 l/min He. The analytical protocols followed are those typically employed for the analysis  
219 of glass (Gratuze 2016), which include a pre-ablation time of 20 seconds and the acquisition of 9 mass scans for  
220 58 elements. Trace elements data were normalised to N-MORB (Gale et al. 2013) and normalised to chondrite  
221 (Barrat et al. 2012).

222 AQ performed micro-Raman spectroscopy analysis on phenocrysts located inside the devitrifications centres in  
223 several samples with a Bruker SENTERRA Raman microspectrometer equipped with a 532 nm laser, and a 1200-

224 line diffraction grating resulting in a resolution of 3 to 5 cm<sup>-1</sup>, after cleaning the samples with hydrogen peroxide  
225 and ultrasonic bath. Spectra were interpreted using the RRUFF database (Lafuente et al. 2016).

226 Before micro-sampling for EPMA and LA-ICP-MS, 3D reconstruction of the surface and the inner structure of the  
227 samples was realised by NV via X-ray microtomography using a GE VTOMEX-S 240/180. Depending on the size  
228 of the artefacts and on the fact that they would suffer or not the microsampling for geochemical analysis, the  
229 microscan performed have variable resolutions between 6 and 21 µm<sup>3</sup> per voxel. AQ extracted isosurfaces from  
230 these 3D models using the Avizo software.

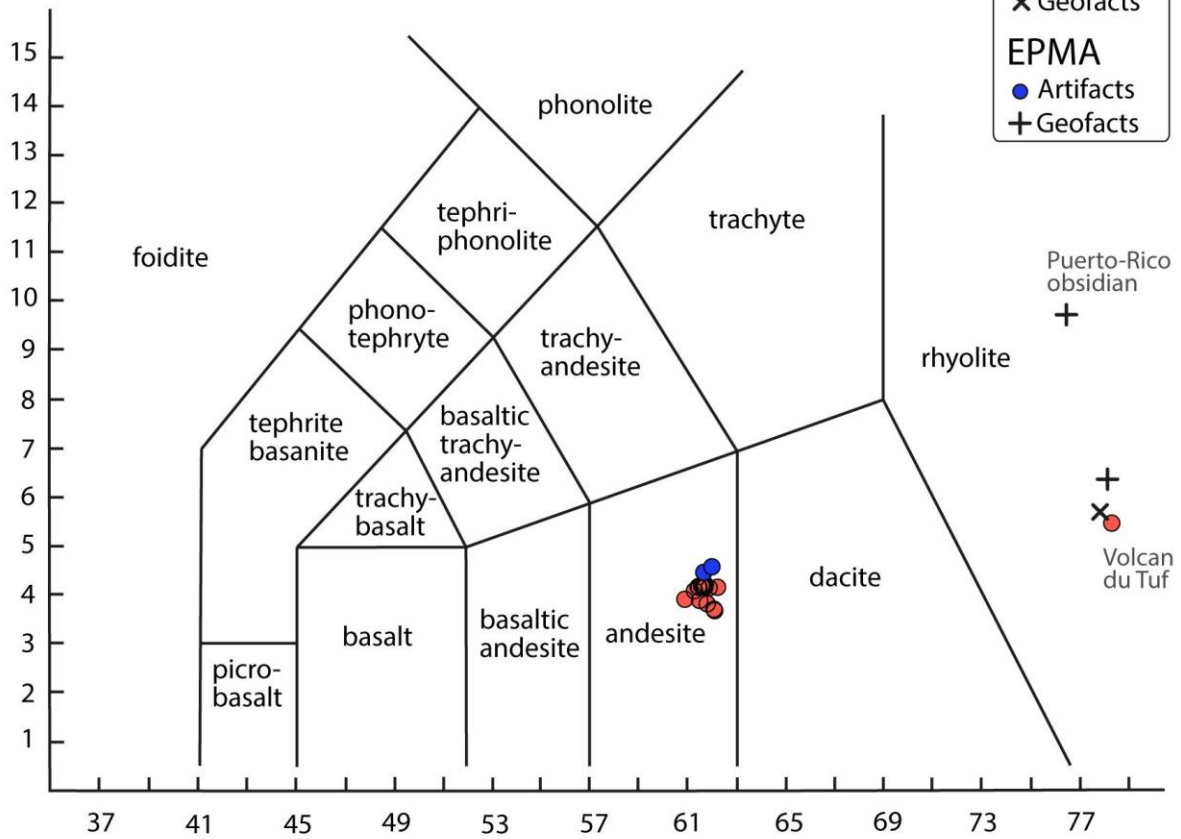
## 231 Results

232 The andesitic artefacts consist of a matrix that is entirely translucent, with a slight brownish-orange hue (see  
233 Figure 2). A perlitic structure is evident across all pieces, suggesting quenching, as this is the most likely way this  
234 material with this chemical composition formed naturally. A few phenocrysts of various morphologies can be  
235 observed on the surface: some are bi-pyramidal, showing fluidity and probably resulting from crystallisation in the  
236 magma chamber or chimney, others are definitely devitrification spherules (Figure 2, S4, and S5). Some pieces  
237 exhibit significant vesiculation, with vesicles accounting for approximately half the volume of certain pieces (Figure  
238 S4). Microtomography scanning reveals that these vesicles are of various types, sizes, shapes and orientations  
239 (Figure S6), signifying different degassing and solidification events. Lastly, the size of the artefacts and the  
240 occasional presence of cortical surfaces lead us to estimate that the original blocks were likely rounded and had  
241 a diameter of approximately five centimetres. It is also conceivable that these blocks were likely collected in a  
242 primary or sub-primary position, possibly within an ash layer, as the cortical surfaces show no signs of erosion  
243 caused by transport.

244 The rhyolitic artefact, in contrast, features a dark grey vitreous matrix with a banded texture highlighted by sub-  
245 millimetric phenocrysts of feldspar (Figure S4). The perlitic structure is remarkably prominent, to the extent that it  
246 probably hindered the development of a useful conchoidal fracture for knapping.

247 Non-invasive techniques – to ensure the conservation of these rare artefacts – were used on most samples to  
248 assess the homogeneity of the collection. SEM-EDS and PIXE data showed a very homogeneous glass  
249 composition and revealed the andesitic composition of most samples (Figure 3, Table S1 & S2). ED-XRF analysis  
250 confirmed the overall high homogeneity among trace elements for the archaeological andesitic artefacts and the  
251 close proximity of the rhyolitic artefact with the Volcan du Tuf source, as PIXE already did in the initial study  
252 (Figure 4 and Table S1, S3 & S4). Andesites containing vitreous phases sampled in Guadeloupe do not match  
253 the archaeological artefacts' composition. SEM-EDS analysis detected plagioclase feldspar and rare Fe-Ti oxides.  
254 It revealed the fibrous structure of plagioclase feldspars within voids (Figure S7), likely formed due to matrix  
255 devitrification. These spherulites displayed bow-tie and spherical shapes. Their alignment is probably due to the  
256 original alignment of crystallisation nuclei in fluidal planes (Figure S4). Raman spectroscopy (Figures S5)  
257 confirmed the identification of most crystals as labradorite, indicating their formation in fluidal planes likely  
258 occurred within the magma chamber prior to the eruption, rather than through devitrification, due to the low  
259 calcium concentration of the obsidian. It also identified the presence of augite, cristobalite, and quartz in the  
260 clusters or lines of minerals.

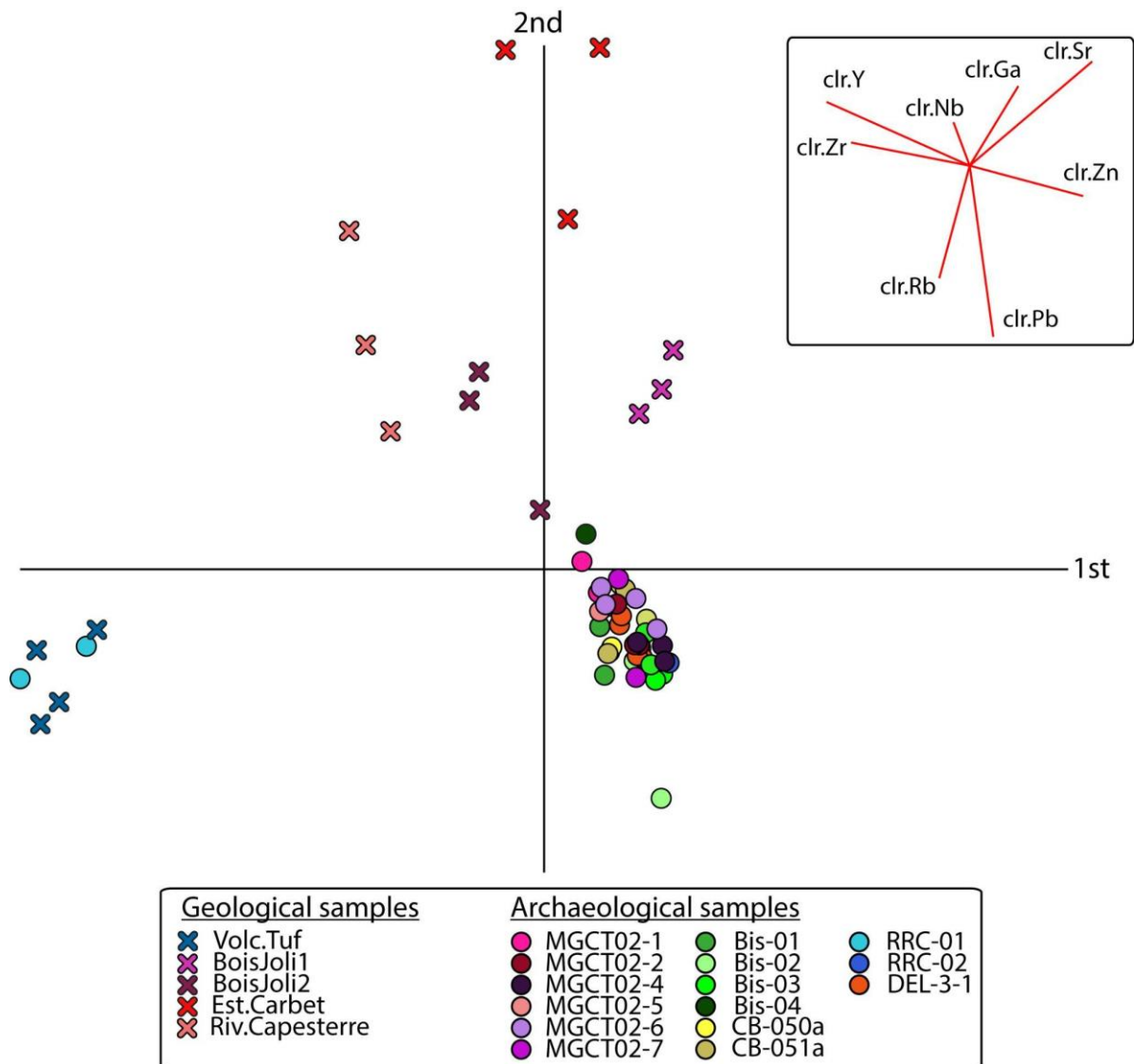
Na<sub>2</sub>O + K<sub>2</sub>O (wt%)



SiO<sub>2</sub> (wt%)

261  
262  
263  
264  
265

Figure 3 Total Alkali Silica (TAS) diagram (Le Maitre et al. 2005) illustrates the elemental composition measured using PIXE and EPMA on glassy archaeological and geological samples. All the artefacts, with the exception of one, consist of an unusual andesitic glass, while the geological samples are composed of obsidian, a more typical rhyolitic glass.



266  
267  
268  
269

Figure 4 PCA on ED-XRF data (trace elements only) from all artefacts as well as geological samples collected in the Guadeloupean archipelago (rhyolitic and andesitic). Each point on the graph relates to one measurement on the sample.

270  
271  
272  
273  
274  
275  
276

Based on these non-invasive results and in order to obtain high accuracy measurements from these surprising artefacts and potential sources, we conducted EPMA and LA-ICP-MS analysis (Table 2). The homogeneity and the andesitic nature of the archaeological was confirmed, as well as the rhyolitic composition of both non-archaeological glass (Figure 3). The homogeneity of the two archaeological artefacts is incredibly high, for all the major and trace elements that we were able to measure (51 in total), clearly indicating that these two artefacts, unearthed from two different archaeological sites, originate from the same volcanic event, probably from the andesitic volcanism of the central Lesser Antilles subduction context (Figure 5).

<b>EPMA (%)</b>	<b>ObsPR</b>	<b>VolcanTuf</b>	<b>MGCT02-6</b>	<b>BIS-03</b>
<b>SiO<sub>2</sub></b>	76,36	78,02	61,74	62,00
<b>TiO<sub>2</sub></b>	0,22	0,15	0,57	0,57
<b>Al<sub>2</sub>O<sub>3</sub></b>	11,54	12,58	16,94	16,99
<b>FeO</b>	2,16	1,80	5,49	5,40
<b>MnO</b>	0,12	0,06	0,13	0,12
<b>MgO</b>	0,07	0,14	2,66	2,65
<b>CaO</b>	0,11	1,51	6,87	6,72
<b>Na<sub>2</sub>O</b>	4,92	4,22	3,35	3,48
<b>K<sub>2</sub>O</b>	4,83	2,22	1,29	1,29
<b>P<sub>2</sub>O<sub>5</sub></b>	0,02	0,04	0,23	0,23
<b>SO<sub>2</sub></b>	0,03	0,02	0,01	0,00
<b>F</b>	0,14	0,01	0,01	0,00
<b>Cl</b>	0,20	0,24	0,06	0,06
<b>Total</b>	<b>100,72</b>	<b>101,01</b>	<b>99,35</b>	<b>99,51</b>
<b>LA-ICP-MS (µg/g)</b>	<b>ObsPR</b>	<b>VolcanTuf</b>	<b>MGCT02-6</b>	<b>BIS-03</b>
<b>V</b>	3.98	0.24	124	124
<b>Cr</b>	0.31	0.48	8.54	8.57
<b>Co</b>	0.02	0.88	12.9	13.8
<b>Ni</b>	<LOD	0.33	4.51	4.59
<b>Cu</b>	0.04	13.9	142	147

<b>Zn</b>	236	35.7	70.4	69.7
<b>Ga</b>	30.1	11.6	17.2	17.2
<b>As</b>	3.45	0.97	2.00	1.66
<b>Rb</b>	200	47.2	38.8	39.6
<b>Sr</b>	1.82	80.5	221	218
<b>Y</b>	92.2	36.4	15.3	14.9
<b>Zr</b>	852	136	79.5	77.3
<b>Nb</b>	75.1	3.57	2.57	2.62
<b>Mo</b>	5.66	1.18	2.34	2.40
<b>Sn</b>	5.23	1.48	1.22	1.35
<b>Sb</b>	0.28	0.07	0.39	0.30
<b>Cs</b>	3.81	1.52	1.84	1.91
<b>Ba</b>	8.87	273	203	202
<b>La</b>	36.9	13.9	10.2	9.97
<b>Ce</b>	89.3	31.5	21.2	20.7
<b>Pr</b>	9.85	3.98	2.47	2.47
<b>Nd</b>	35.7	18.1	10.4	10.4
<b>Sm</b>	9.29	4.69	2.52	2.62
<b>Eu</b>	1.49	0.79	0.78	0.78
<b>Gd</b>	9.66	4.78	2.34	2.30
<b>Tb</b>	2.00	0.89	0.41	0.41
<b>Dy</b>	13.9	5.87	2.58	2.50
<b>Ho</b>	3.15	1.31	0.57	0.56
<b>Er</b>	9.57	3.86	1.65	1.60
<b>Tm</b>	1.51	0.59	0.24	0.24
<b>Yb</b>	11.4	4.39	1.90	1.83
<b>Lu</b>	1.67	0.66	0.29	0.28

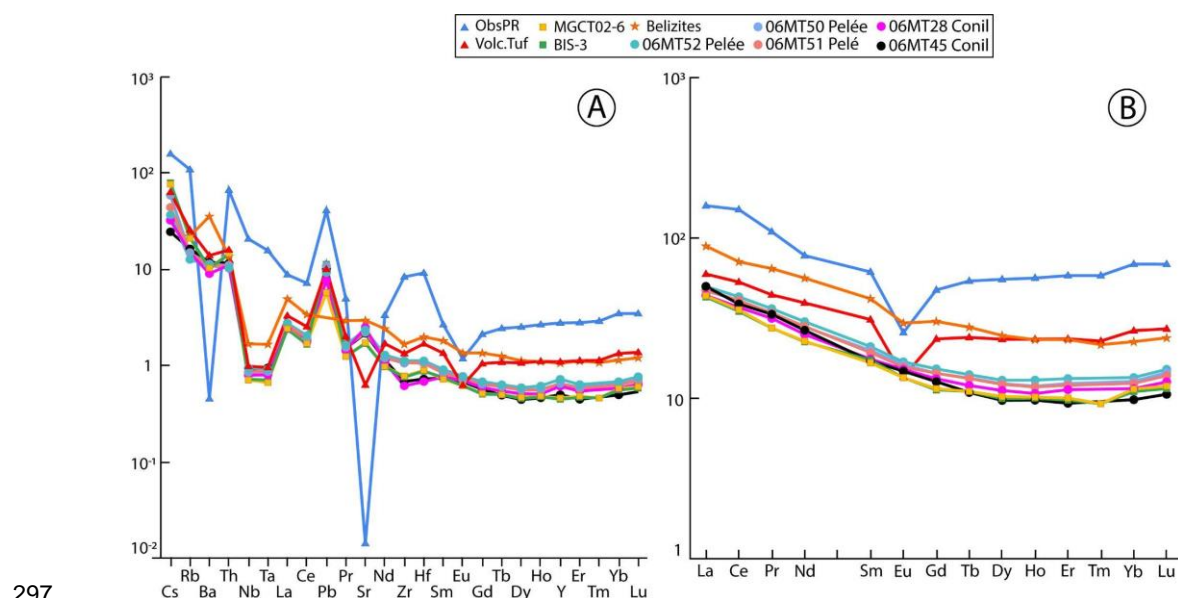


<b>Hf</b>	22.6	4.15	2.20	2.16
<b>Ta</b>	3.77	0.23	0.16	0.17
<b>W</b>	0.58	0.28	0.37	0.39
<b>Pb</b>	20.9	5.12	2.92	5.78
<b>Th</b>	16.8	4.01	3.69	3.60
<b>U</b>	6.32	1.30	1.14	1.13

278 Table 2. Major and minor elements composition measured by EPMA and trace elements abundances measured  
279 by LA-ICP-MS.

280 For the andesitic archaeological artefacts, no enrichment in Cr, Ni, or Co are visible in the archaeological artefacts,  
281 indicating that no extra-terrestrial contamination can be suspected from this data (Koeberl 1998; Koeberl 2014;  
282 Rochette et al. 2021).

283 On the other hand, the trace elements and REE spectra suggest an origin from an andesitic volcanism that could  
284 be related directly to central Lesser Antilles context like the andesites from the northwestern part of Martinique,  
285 where the Mont Conil and the Montagne Pelée have been sampled (Figure 5). Other andesitic rocks from the  
286 region have been sampled and analysed previously (Labanieh 2009; Germa et al. 2011; Howe et al. 2015; Fedele  
287 et al. 2021) and if the general shape of the diagram is similar, the absolute values do not match the results from  
288 the archaeological artefacts (Figure S8). There is apparently a large enough variability in trace elements and REE  
289 in the Lesser Antilles context, between islands, and between periods of volcanic activity, to propose a potential  
290 provenance of the archaeological material from Martinique. The samples of rhyolites (ObsPR and VolcanTuf)  
291 exhibit typical compositions of differentiated volcanic rocks, such as a negative anomaly in Eu. However, it can  
292 be observed that these two rocks are not derived from the same type of magma. The Puerto Rico obsidian is low  
293 in alkaline earth elements and does not display anomalies in Nb and Ta, which may indicate a significant  
294 contribution from the oceanic crust in the formation of the magma during subduction (Briqueu et al. 1984; Jolly  
295 et al. 2008). The composition of the obsidian from the Volcan du Tuf corresponds, in turn, to the ultimate term of a  
296 tholeiitic arc series, as previously suggested by Gadalia et al. (1988).



297

298 Figure 5 Comparison of both archaeological artefacts, the two obsidian samples analysed by LA-ICP-MS, with  
299 Belizites (from Rochette et al. 2021, Pb is below detection limit in this analysis) and some andesites from  
300 northwest Martinique (from Labanieh, 2009, Tm are lacking in these analysis). A. N-MORB-normalised trace  
301 elements patterns. B. Chondrite-normalised REE patterns.

## Discussion

302

303 The results presented here introduce, for the first time, fragments of glassy material found in several  
304 archaeological sites from the Ceramic Age in the Caribbean islands. These eighteen elements were discovered  
305 within an area of only a 50 km radius. Our extensive review of the literature and survey of the Caribbean  
306 archaeologist community has confirmed that these are the only artefacts of this kind currently known. The  
307 thorough analysis of these objects, from both an archaeological and geological perspective, aims to document  
308 them and bring them to the attention of the community. It also sought to determine their origin, as this type of  
309 material is traditionally used in archaeology to study the mobility of materials, people, and exchange networks.  
310 Two different materials have been identified in this archaeological corpus: obsidian *sensu stricto* and vitreous  
311 andesite, a material hitherto unknown.

312

### *A single obsidian artefact*

313 Obsidian *sensu stricto* is a vitreous volcanic rock, oversaturated with silica and typically of rhyolitic composition  
314 (Tuffen et al. 2020). While all the archaeological samples from this study were initially recognized as such on the  
315 field, their geochemical analysis using PIXE yielded unexpected results by unveiling the presence of a single  
316 rhyolitic sample within the corpus. These findings were subsequently confirmed through the application of other  
317 analytical techniques. The RRC-01 sample sets itself apart from other glassy artefacts in our study due to its  
318 distinct geochemical composition and its dark grey coloration (Figure 3 and 4). The combination of its chemical  
319 profile and macroscopic features strongly suggests it originates from the Volcan du Tuf, the sole known rhyolitic  
320 volcano in Guadeloupe, situated at a mere distance of less than 2 kilometres from the archaeological site where  
321 it was unearthed.

322 Despite its uniqueness in the archaeological record, this artefact provides valuable insights. It attests the choice  
323 of experimenting with local materials, when the knappable lithic raw materials in Guadeloupe are scarce. The low  
324 knapping quality of this obsidian underscores the Early Ceramic Age inhabitants' ability to work with relatively  
325 poor-quality raw materials. Although most of the lithic tools produced in the Lesser Antilles are based on good  
326 quality flint from Antigua, jasper from several islands and radiolarite from La Désirade (van Gijn 1993;  
327 Knippenberg 2007; de Waal and Knippenberg 2020; Queffelec et al. 2023). Interestingly, they decided to produce  
328 some flaking products with a poor quality material, while they could have used this shiny and unique material to  
329 produce other kind of artefacts such as the diverse beads or pendants they used to produce, including some rare  
330 black ones (Brock et al., 2020; Queffelec et al., 2020). We think that this novelty could be related to the exploration  
331 of yet uncharted areas of the islands, as Early Ceramic occupations are predominantly coastal, at least as  
332 evidenced by the archaeological record (Stouvenot and Casagrande 2017).

333 While it is possible that this particular raw material may never be encountered again in any other archaeological  
334 site, our work has established a geochemical reference for both a plausible source of volcanic glass in the  
335 Caribbean islands and for the artefact. Furthermore, the search for the source of this artefact has allowed us to  
336 discover the existence of a likely obsidian deposit in Puerto Rico, analyse a sample from it, and thereby provide  
337 a reference for the composition of this obsidian. This may prove highly valuable for future provenance studies if  
338 similar materials are uncovered in the Caribbean again.

339

### *Andesitic glass artefacts*

340 The confirmed andesitic glass artefacts were recovered in a 50 km radius area, where the southern site is located  
341 on the southeast coast of Dominica and the northernmost site is located in the southern half of the island of  
342 Basse-Terre (Guadeloupe). If the artefact from Mill Reef (Antigua) were to be confirmed, it would significantly  
343 modify the geographical extent even if keeping it constrained to the central Lesser Antilles. Apart from two  
344 exceptions, they were all recovered in Early Ceramic context. Two samples originate from an archaeology dig at  
345 the Caille à Bélasse site, on the Ilet de Petite Terre, which regrettably remains incomplete due to the passing of  
346 the excavator. This site, despite remaining unpublished, is considered to be Late Ceramic in age (Gagnepain  
347 2007).

348 The technological analysis conducted on the artefacts connects them all to a *chaîne opératoire* using bipolar  
349 percussion techniques. They do not differ in this way from the artefacts made from other raw materials in the sites

350 where they were unearched and in many sites from this period (Walker 1979; Rodriguez Ramos 2001; Bérard  
351 2011). It is therefore interesting to note that despite being a very unusual material, probably seen for the first time  
352 by the crafter, the method employed was exactly the same as with the jasper or the flint they usually knapped.

353 Given the poor quality of the material and the simplicity of the products, it seems unlikely that these rocks were  
354 part of an exchange network. They would therefore suggest that the same group was highly mobile within different  
355 islands of the Guadeloupe archipelago, Dominica and perhaps Antigua.

356 Despite intensive literature research and discussion with volcanologists, including glass specialists, and  
357 archaeologists specialised in obsidian, no such andesitic glass has been ever identified, neither in the Caribbean  
358 nor anywhere else in the world. This vitreous andesite, and its origin in particular, is thus of tremendous interest,  
359 both for archaeologists and geologists. There are two concurrent hypothesis: it was produced by volcanoes but  
360 never identified or studied by geologists, or it originates from an impact, and would therefore add to the list of  
361 meteoritic material used by people in the past, beside meteoritic iron in Arctic, Egypt or Europe (Buchwald 1992;  
362 Rehren et al. 2013; Comelli et al. 2016; Hofmann et al. 2023), and impactites, especially Libyan glass (e.g. Lull  
363 García 2014). Surprisingly, despite tektites being found in many archaeological sites, including some where  
364 obsidian was used as raw material for knapping, no mention of modified tektites has been found (Hildebrand et  
365 al. 1994; Cornec et al. 2013; Marwick et al. 2021).

366 The only mentions of naturally occurring andesitic composition glass we could locate all pertained impactites and  
367 tektites. Several rocks of this type exhibit significant similarities with our vitreous andesites: automorphic  
368 feldspars, originating from the pre-existing target rock of the meteorite impact, embedded within the perlite-  
369 structured impact glass (French, 1998, p.90), as well as closely related elemental compositions (Izett 1991): the  
370 chemical composition of the rock mainly copy the chemical composition of the impacted rock, it can therefore be  
371 glass of a very diverse range of compositions. Recently, a new field of tektites has been identified in Belize, of  
372 which unmodified elements have been found in some Mayan archaeological sites (Rochette et al. 2021). These  
373 rocks display elemental compositions quite similar to the andesites we are studying and are notably located in  
374 the Caribbean region. Several lithic materials found in the Caribbean islands already pointed to Central America,  
375 such as part of the jadeite jade celts (Garcia-Casco et al. 2013; Knaf et al. 2021) but also, as a working hypothesis,  
376 the green lapidary material sudoite, which could come hypothetically from Costa Rica (Queffelec et al. 2021;  
377 Queffelec et al. 2023).

378 We focused our efforts on investigating various indicators that could help us identify an extraterrestrial origin for  
379 these artefacts or, conversely, confirm a volcanic origin whose exact source might potentially be traced. Firstly,  
380 as mentioned earlier, the raw nodules were likely generally spherical, akin to many tektites. However, their  
381 dimensions would have approached approximately five centimetres in diameter, which is an exceptionally large  
382 size for tektites especially if they were far from the impact (Montanari and Koeberl 2000, p.58). Furthermore, the  
383 chemical composition of the artefacts, even though they could be derived from several blocks, is highly uniform.  
384 Moreover, no variation in the chemical composition of the glass is observed at the microscopic scale with the  
385 SEM-EDS (Table S2). This characteristic is more commonly shared by volcanic rocks than by impact glasses,  
386 whether tektites or impactites, which can exhibit significant heterogeneity (French 1998). Although some tektites  
387 can be relatively homogeneous (Rochette et al. 2021), their level of homogeneity is not comparable with what we  
388 observe here (Table S5).

389 No positive anomalies in chromium, cobalt, or nickel were observed, which are typically indicators of  
390 contamination by meteoritic material, frequently found in impactites (Koeberl, 2014). The profiles of trace elements  
391 and rare earth elements are, in turn, consistent with arc volcanism, specifically aligning with recent volcanic  
392 activity in the central part of the Lesser Antilles (Figure 5) where the artefacts were recovered.

393 A volcanic origin therefore appears to be the most likely scenario. However, as of now, we have not been able to  
394 trace the exact source of this material. The distribution of artefacts suggests a probable origin in the southern part  
395 of the Guadeloupean archipelago. Yet, this may be influenced by the robust state of archaeology in Guadeloupe  
396 due to standard and development-led archaeology, compared to neighbouring islands. In 2021, we conducted a  
397 survey in this region, guided by a thorough review of geological literature, geological maps, and their descriptions.  
398 However, we did not find any vitreous andesite blocks; only porphyritic andesites were discovered, with a matrix  
399 that is largely vitrified but unsuitable for toolmaking. These rocks were analysed and their compositions do not fit  
400 with the same volcanic event (Table 1, Figure 4). Comparisons with rocks from Guadeloupe or Dominica revealed  
401 pattern similarities in the general, qualitative shape of trace and REE spectra, pointing to the possibility of finding

402 such patterns in andesites originating from subduction in the region. It is only with rocks from northern Martinique  
403 that qualitative and quantitative very good fits were observed (Figures 1 and 5). This region is particularly  
404 challenging to access, mostly uninhabited, and no surveys have been possible thus far. However, we plan to  
405 conduct explorations in the coming years to search for a source of vitreous andesite.

406 Another hypothesis that can be considered is that the original deposit has now vanished or is inaccessible. Indeed,  
407 erosion is quite pronounced in this tropical climate, where raining events can be important and even catastrophic  
408 in case of hurricanes. The deposit of these highly distinctive vitreous andesites is, or was, almost certainly very  
409 limited and may have been eroded. Additionally, the region experiences very active volcanic activity, and large  
410 portions of the land available to Early Ceramic inhabitants have been covered by recent eruption products. The  
411 fact that almost all artefacts were unearthed in sites dated to the Early Ceramic period may indicate that the  
412 source disappeared around 500 CE. Recent volcanic eruptions on the islands of Guadeloupe, Dominica and  
413 Martinique are well known and may have covered the potential source, as for example the well-known P2 Plinian  
414 eruption, dated to 280 AD, which entirely covered archaeological sites in Martinique, like the site of Vivé, under a  
415 few cm of dilute pyroclastic flow deposits overlain by 10 to 50 cm of pumice fallout deposits (Carazzo et al. 2019).

## 416 Conclusion

417 We present here the first identification of natural glass artefacts in the Ceramic Age context in the Caribbean  
418 Islands. One among these samples is identified as obsidian *sensu stricto*, for which the origin is the Volcan du  
419 Tuf, located near the archaeological site, on the Western part of Basse-Terre island in Guadeloupe. This raw  
420 material, despite its bad quality for knapping, seems to have been attractive for inhabitants of Guadeloupe during  
421 the Early Saladoid, with which they produced at least a small flake by bipolar percussion, as they usually do with  
422 other raw materials. Looking for the obsidian sources in the Caribbean islands led us to identify an obsidian  
423 deposit in Puerto Rico, which does not appear to have been utilised by any population because of its current  
424 absence in the archaeological series. The deposit is only known through secondary sources but provides a  
425 massive and impurity-free material of very good quality for crafting. We provide here a geochemical reference  
426 framework that will make it possible to properly identify this material if it is ever found in an archaeological site.  
427 We present a geochemical reference framework here that will enable the proper identification of this material if it  
428 is ever found at an archaeological site.

429 The other artefacts have been identified as vitreous andesites, which are highly atypical rocks whose origin is a  
430 real challenge to identify. While a formation related to a meteorite impact has been extensively considered, our  
431 observations and analysis lead us to favour the hypothesis of a volcanic origin. Geochemical similarities with  
432 volcanic deposits from Martinique demonstrate that the volcanism from the central part of the Lesser Antilles  
433 could produce andesitic lava of such a composition. However, despite geologists' work conducted in Guadeloupe  
434 and Martinique for decades, and despite some field surveys in Guadeloupe, we have not been able to locate the  
435 original deposit or even find a few secondary vitreous andesites. Therefore, we seriously consider the possibility  
436 that the source, if it was located in Guadeloupe or Martinique, could now be lost, perhaps covered by more recent  
437 volcanic deposits. Additional field surveys on the Northwestern coast of Martinique might be interesting to  
438 organise in the future. The thorough mineralogical and geochemical description of the artefacts will allow to easily  
439 connect any new discovery of artefacts or raw material to these samples.

440 Surveying the literature and the community of archaeologists in the Antilles, we confirmed that the use of volcanic  
441 glass is extremely rare and that, outside the Guadeloupean artefacts, currently only one artefact is confirmed in  
442 Dominica and one still needs to be confirmed in Antigua. This constrained geographical distribution allows us to  
443 make the hypothesis that the source material would be located in Guadeloupe or a neighbouring island. While we  
444 have not yet identified the original source of these vitreous andesites, this study allows us to include this material  
445 in the limited list of materials discovered in Antillean archaeological sites for which provenance can be traced.  
446 The list is currently rather short and is composed of the Antiguan flint, the St. Martin calci-rudite and cherto-tuffite,  
447 and the numerous lapidary raw materials. By adding two new geochemically fingerprinted raw materials to this  
448 list, this study may facilitate future endeavours to determine the provenance of similar artefacts and help  
449 reconstruct the litho-spaces of different sites (Delvigne et al. 2021). It is only by conducting and combining the  
450 analysis of the techno-economical pattern of different litho-spaces of sub-contemporaneous sites that one can  
451 approach a dynamic vision of the structure and relations that existed during the Early Ceramic inhabitants of the  
452 Caribbean islands.

453

## *Acknowledgments*

454 We would like to thank Nicolas Vanderesse for the microtomography acquisitions, Yannick Lefrais for his help  
455 with the SEM-EDS analyses and Jean-Alix Barrat who kindly proposed to make the EPMA analysis. We thank  
456 Jeff Walker for providing us with the sample of obsidian from Puerto Rico via Sebastiaan Knippenberg. We also  
457 want to thank Erwan Bourdon (BRGM) for providing help during the prospecting campaign, and Charles Le Losq  
458 and Pierre Rochette for discussion on volcanic glasses and tektites. Finally, we want to thank all the respondents  
459 to our survey about the presence of such material in the Caribbean archaeological record and the discussion  
460 about it, beyond those already mentioned: Benoît Bérard, Andrzej T. Antczak, Dominique Bonnissent, Arie  
461 Boomert, John Crock, Antonio Curet, Scott M. Fitzpatrick, Pierrick Fouéré, Jonathan A. Hanna, Jay Havisier,  
462 Queta Kaye, Reniel Rodriguez-Ramos, Nathalie Sellier-Segard, Nathalie Serrand, Peter E. Siegel, Martijn Van  
463 den Bel.

464 This work was conducted in the framework of the Projet Collectif de Recherche MAPLA (MATières Premières  
465 Lithiques dans les Antilles), funded by the French Ministry of Culture (SRA Guadeloupe) and the Regional Council  
466 of Guadeloupe. This study also received financial support from the French government in the framework of the  
467 University of Bordeaux's IdEx "Investments for the Future" program / GPR "Human Past".

468 For the purpose of Open Access, a CC-BY public copyright licence has been applied by the authors to the present  
469 document and will be applied to all subsequent versions up to the Author Accepted Manuscript arising from this  
470 submission.

471

## *Authors contributions*

472

473 **Conceptualization:** AQ, AL, CS

474 **Funding acquisition:** AQ

475 **Investigation:** AL, AQ, BG, CL, IS, LBG, GC, JL

476 **Methodology:** AL, AQ, FXLB

477 **Formal analysis:** AL

478 **Project administration:** AQ

479 **Resources:** AQ, BG, CS, FXLB, IS, LBG

480 **Supervision:** AQ

481 **Visualisation:** AL, AQ

482 **Writing - original draft:** AL, AQ

483 **Writing - review and editing:** all authors

# Bibliography

- 485 Aitchison, J., 2003, *The Statistical Analysis of Compositional Data*, Blackburn Press.
- 486 Barrat, J.-A., Zanda, B., Moynier, F., Bollinger, C., Liorzou, C., and Bayon, G., 2012, Geochemistry of CI  
487 chondrites: Major and trace elements, and Cu and Zn isotopes, *Geochimica et Cosmochimica Acta*,  
488 **83**, 79–92.
- 489 Bellot-Gurlet, L., Poupeau, G., Doriguel, O., Calligaro, T., Dran, J.-C., and Salomon, J., 1999, A PIXE/fission-  
490 track dating approach to sourcing studies of obsidian artefacts in Colombia and Ecuador, *Journal of*  
491 *Archaeological Science*, **26**(8), 855–60.
- 492 Bérard, B., 2011, L'utilisation de la percussion sur enclume par les premières populations agro-céramistes des  
493 Antilles, *PALEO : Revue d'Archéologie Préhistorique*, **2009–2010**(spécial), 221.
- 494 Bérard, B., 2013, The Saladoid, In *The Oxford Handbook of Caribbean Archaeology* (eds. W. F. Keegan, C. L.  
495 Hofman, and R. Rodríguez Ramos), 184–97, Oxford University Press, Oxford.
- 496 Bonnissent, D., and Chancerel, A., 2001, Ruelle des Roches caraïbes. Jude Plessis, Saint-Robert. Commune  
497 de Baillif. Rapport d'opération archéologique d'urgence AFAN, Service Régional de l'Archéologie, Drac  
498 Guadeloupe, Basse-Terre, Guadeloupe.
- 499 Briquieu, L., Bougault, H., and Joron, J. L., 1984, Quantification of Nb, Ta, Ti and V anomalies in magmas  
500 associated with subduction zones: petrogenetic implications, *Earth and Planetary Science Letters*,  
501 **68**(2), 297–308, [https://doi.org/10.1016/0012-821X\(84\)90161-4](https://doi.org/10.1016/0012-821X(84)90161-4).
- 502 Brock, F., Ostapkowicz, J., Collinson, M. E., Bull, I. D., Dyer, C., Lane, D. W., Domoney, K., and Uden, J., 2020,  
503 Dark materials: Pre-Columbian black lithic carvings from St Vincent and the wider Caribbean, *Journal*  
504 *of Archaeological Science: Reports*, **32**, 102393, 10.1016/j.jasrep.2020.102393.
- 505 Buchwald, V. F., 1992, On the use of iron by the Eskimos in Greenland, *Materials Characterization*, **29**(2), 139–  
506 76, 10.1016/1044-5803(92)90112-U.
- 507 Calligaro, T., Dran, J.-C., Moignard, B., Pichon, L., Salomon, J., and Walter, P., 2002, Ion beam analysis with  
508 external beams: Recent set-up improvements, *Nuclear Instruments and Methods in Physics Research*  
509 *Section B: Beam Interactions with Materials and Atoms*, **188**(1–4), 135–40.
- 510 Cann, J. R., and Renfrew, C., 1964, The characterization of obsidian and its application to the Mediterranean  
511 region, *Proceedings of the Prehistoric Society*, Cambridge University Press.
- 512 Carazzo, G., Tait, S., and Kaminski, E., 2019, Marginally stable recent Plinian eruptions of Mt. Pelée volcano  
513 (Lesser Antilles): the P2 AD 280 eruption, *Bulletin of Volcanology*, **81**(1), 3, 10.1007/s00445-018-1265-  
514 6.
- 515 Cody, A. K., 1993, Distribution of exotic stone artifacts through the Lesser Antilles : their implications for  
516 prehistoric interaction and exchange, In *Proceedings of the 14th Congress of the International*  
517 *Association for Caribbean Archaeology*, 204–26, Barbados.
- 518 Colas, C., 2002, Le Tourlourous. Marie-Galante. Document final de Synthèse INRAP, Service régional de  
519 l'Archéologie, DRAC Guadeloupe, Basse-Terre, Guadeloupe.
- 520 Comas, M., and Thió-Henestrosa, S., 2011, CoDaPack 2.0: a stand-alone, multi-platform compositional  
521 software, In *Proceedings of the 4th international workshop on compositional data analysis*, 1–10.
- 522 Comelli, D., D'orazio, M., Folco, L., El-Halwagy, M., Frizzi, T., Alberti, R., Capogrosso, V., Elnaggar, A.,  
523 Hassan, H., Nevin, A., Porcelli, F., Rashed, M. G., and Valentini, G., 2016, The meteoritic origin of  
524 Tutankhamun's iron dagger blade, *Meteoritics & Planetary Science*, **51**(7), 1301–9,  
525 10.1111/maps.12664.
- 526 Cornec, J. H., Cornec, L. H., and Povenmire, H., 2013, A layered tektite from the Central American strewn field,  
527 In *44th Annual Lunar and Planetary Science Conference*, 1123.
- 528 Delvigne, V., Lafarge, A., Fernandes, P., Pesesse, D., Angevin, R., Bindon, P., Langlais, M., Piboule, M.,  
529 Queffelec, A., Tuffery, C., and others, 2021, Quels territoires en Préhistoire? Une analyse par réseaux  
530 de lieux pour penser l'espace au Paléolithique supérieur, *Bulletin de la Société préhistorique française*,  
531 **118**(S), 27–69.
- 532 Febles, J., 2004, Informe de análisis tecnopológico del material lítico, sitio arqueológico Maruca, Barrios  
533 Canas, Ponce, Puerto Rico., Consejo para la Protección del Patrimonio Arqueológico Terrestre,  
534 Puerto Rico, San Juan.
- 535 Fedele, L., Cole, P. D., Scarpati, C., and Robertson, R. E., 2021, Petrological insights on the last 1000 years of  
536 explosive activity at La Soufrière volcano, St. Vincent (Lesser Antilles), *Lithos*, **392**, 106150.
- 537 Fouéré, P., 2006, Étude du mobilier lithique, In *Gourbeyre « Bisdary » (Guadeloupe). Un site amérindien de*  
538 *piémont.* (ed. T. Romon), Service régional de l'Archéologie, DRAC Guadeloupe, Basse-Terre,  
539 Guadeloupe.
- 540 French, B. M., 1998, Traces of catastrophe: A handbook of shock-metamorphic effects in terrestrial meteorite  
541 impact structures, Lunar and Planetary Institute.
- 542 Gadalia, A., Gstalter, N., and Westercamp, D., 1988, La chaîne volcanique de Bouillante, Basse-Terre de  
543 Guadeloupe, (Petites Antilles) : Identité pétrographique, volcanologique et géodynamique, *Géologie de*  
544 *la France*(2–3), 101–30.
- 545 Gagnepain, J., 2007, Première approche du site de Caille-à-Bélasse. Campagne de 2006-2007. Ilets de Petite-  
546 Terre. Terre-de-Bas. Rapport d'opération de fouille archéologique, Service régional de l'Archéologie,  
547 DRAC Guadeloupe, Basse-Terre, Guadeloupe.

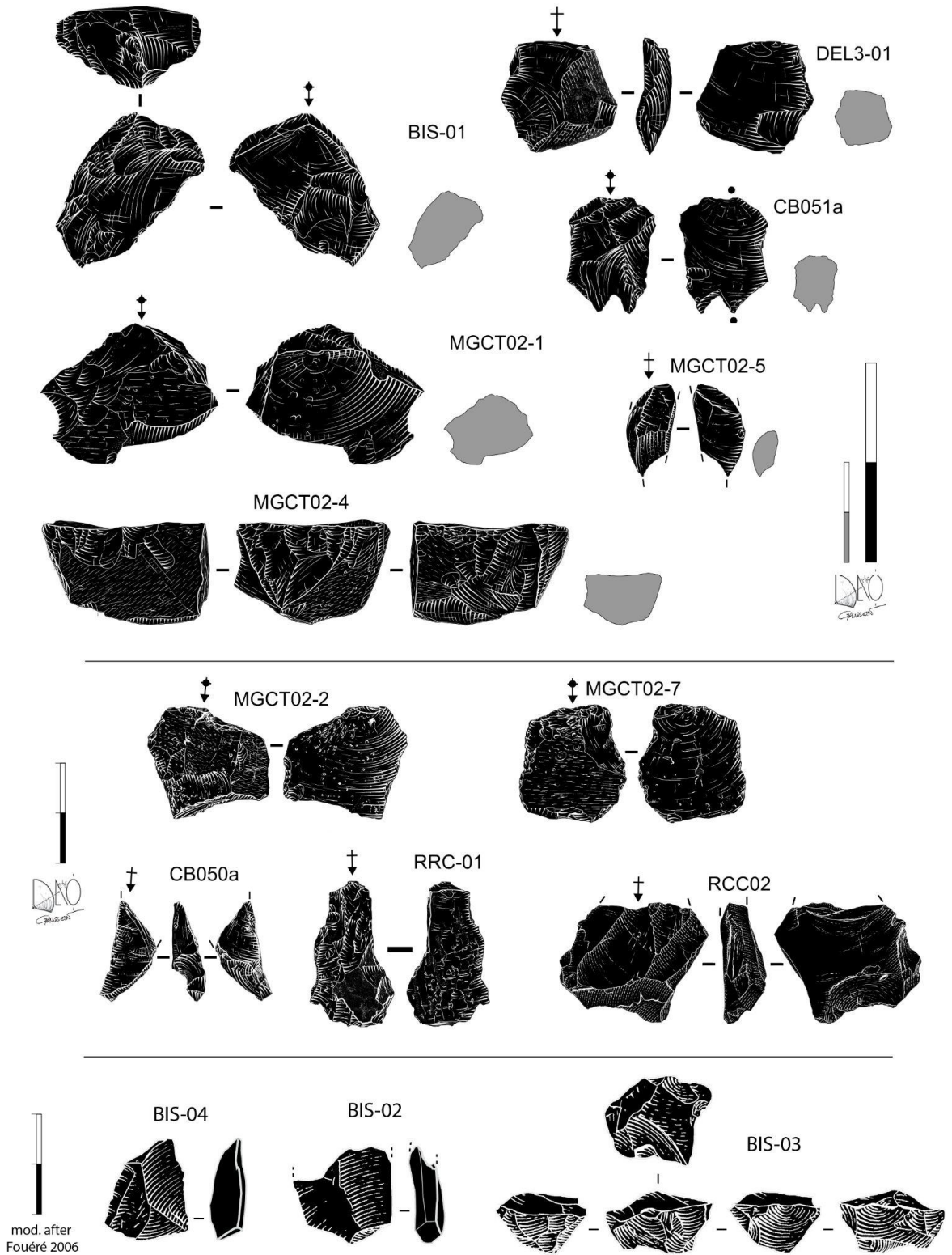
- 548 Gale, A., Dalton, C. A., Langmuir, C. H., Su, Y., and Schilling, J.-G., 2013, The mean composition of ocean  
549 ridge basalts, *Geochemistry, Geophysics, Geosystems*, **14**(3), 489–518.
- 550 Garcia-Casco, A., Knippenberg, S., Rodríguez Ramos, R., Harlow, G. E., Hofman, C. L., Pomo, J. C., and  
551 Blanco-Quintero, I. F., 2013, Pre-Columbian jadeite artifacts from the Golden Rock Site, St. Eustatius,  
552 Lesser Antilles, with special reference to jadeite artifacts from Elliot's, Antigua: Implications for  
553 potential source regions and long-distance exchange networks in the Greater Caribbean, *Journal of*  
554 *Archaeological Science*, **40**(8), 3153–69, 10.1016/j.jas.2013.03.025.
- 555 Germa, A., Quidelleur, X., Lahitte, P., Labanieh, S., and Chauvel, C., 2011, The K–Ar Cassinon–Gillot  
556 technique applied to western Martinique lavas: a record of Lesser Antilles arc activity from 2 Ma to  
557 Mount Pelée volcanism, *Quaternary Geochronology*, **6**(3–4), 341–55.
- 558 van Gijn, A. L., 1993, Flint exploitation on Long Island, Antigua, West-Indies, *Analecta Praehistoria Leidensia*,  
559 **26**, 183–97.
- 560 Glascock, M. D., 2002, Obsidian provenance research in the Americas, *Accounts of chemical research*, **35**(8),  
561 611–7.
- 562 Glass, B., Burns, C., Lerner, D., and Sanfilippo, A., 1984, North American tektites and microtektites from  
563 Barbados, West Indies, *Meteoritics*, **19**, 228.
- 564 Golitko, M., Meierhoff, J., Feinman, G. M., and Williams, P. R., 2012, Complexities of collapse: The evidence of  
565 Maya obsidian as revealed by social network graphical analysis, *Antiquity*, **86**(332), 507–23,  
566 10.1017/S0003598X00062906.
- 567 Gratuze, B., 2016, Glass Characterization Using Laser Ablation-Inductively Coupled Plasma-Mass  
568 Spectrometry Methods, In *Recent Advances in Laser Ablation ICP-MS for Archaeology* (eds. L.  
569 Dussubieux, M. Golitko, and B. Gratuze), 179–96, Natural Science in Archaeology, Springer, Berlin,  
570 Heidelberg, 10.1007/978-3-662-49894-1\_12.
- 571 Hildebrand, A. R., Moholy-Nagy, H., Koeberl, C., May, L., Senftle, F., Thorpe, A. N., Smith, P. E., and York, D.,  
572 1994, Tektites found in the ruins of the Maya city of Tikal, Guatemala, In *Lunar and Planetary Science*  
573 *Conference*, Vol. 25, 549.
- 574 Hofman, C. L., 2013, The Post-Saladoid in the Lesser Antilles (AD 600/800-1492), In *The Oxford Handbook of*  
575 *Caribbean Archaeology* (eds. W. F. Keegan, C. L. Hofman, and R. Rodríguez Ramos), 205–20, Oxford  
576 University Press, Oxford.
- 577 Hofmann, B. A., Schreyer, S. B., Biswas, S., Gerchow, L., Wiebe, D., Schumann, M., Lindemann, S., García, D.  
578 R., Lanari, P., and Gfeller, F., 2023, An arrowhead made of meteoritic iron from the late bronze age  
579 settlement of mörigen, Switzerland and its possible source, *Journal of Archaeological Science*, **157**,  
580 105827.
- 581 Howe, T. M., Lindsay, J. M., and Shane, P., 2015, Evolution of young andesitic–dacitic magmatic systems  
582 beneath Dominica, Lesser Antilles, *Journal of Volcanology and Geothermal Research*, **297**, 69–88,  
583 10.1016/j.jvolgeores.2015.02.009.
- 584 Izett, G. A., 1991, Tektites in Cretaceous-Tertiary boundary rocks on Haiti and their bearing on the Alvarez  
585 Impact Extinction Hypothesis, *Journal of Geophysical Research: Planets*, **96**(E4), 20879–905,  
586 10.1029/91JE02249.
- 587 Jéhanno, C., Boclet, D., Froget, L., Lambert, B., Robin, E., Rocchia, R., and Turpin, L., 1992, The Cretaceous-  
588 Tertiary boundary at Beloc, Haiti: No evidence for an impact in the Caribbean area, *Earth and*  
589 *Planetary Science Letters*.
- 590 Jolly, W. T., Lidiak, E. G., and Dickin, A. P., 2008, Bimodal volcanism in northeast Puerto Rico and the Virgin  
591 Islands (Greater Antilles Island Arc): Genetic links with Cretaceous subduction of the mid-Atlantic ridge  
592 Caribbean spur, *Lithos*, **103**(3–4), 393–414, <https://doi.org/10.1016/j.lithos.2007.10.008>.
- 593 Keegan, W. F., Hofman, C. L., and Rodríguez Ramos, R., 2013, *The Oxford Handbook of Caribbean*  
594 *Archaeology*, Oxford University Press.
- 595 Knaf, A. C. S., Habiba, Shafie, T., Koornneef, J. M., Hertwig, A., Cárdenas-Párraga, J., García-Casco, A.,  
596 Harlow, G. E., Schertl, H.-P., Maresch, W. V., López Belando, A. J., Hofman, C. L., Brandes, U., and  
597 Davies, G. R., 2021, Trace-elemental and multi-isotopic (Sr-Nd-Pb) discrimination of jade in the  
598 circum-Caribbean: Implications for pre-colonial inter-island exchange networks, *Journal of*  
599 *Archaeological Science*, **135**, 105466, 10.1016/j.jas.2021.105466.
- 600 Knippenberg, S., 2007, *Stone artefact production and exchange among the Lesser Antilles*, Amsterdam  
601 University Press.
- 602 Koeberl, C., 1998, Identification of meteoritic components in impactites, *Geological Society, London, Special*  
603 *Publications*, **140**(1), 133–53.
- 604 Koeberl, C., Shukolyukov, A., and Lugmair, G. W., 2007, Chromium isotopic studies of terrestrial impact craters:  
605 Identification of meteoritic components at Bosumtwi, Clearwater East, Lappajärvi, and Rochechouart,  
606 *Earth and Planetary Science Letters*, **256**(3–4), 534–46, 10.1016/j.epsl.2007.02.008.
- 607 Koeberl, C., 2014, The Geochemistry and Cosmochemistry of Impacts, In *Treatise on Geochemistry (Second*  
608 *Edition)* (eds. H. D. Holland, and K. K. Turekian), 73–118, Elsevier, Oxford, 10.1016/B978-0-08-  
609 095975-7.00130-3.
- 610 Kring, D. A., and Boynton, W. V., 1992, Petrogenesis of an augite-bearing melt rock in the Chicxulub structure  
611 and its relationship to K/T impact spherules in Haiti, *Nature*, **358**(6382), 141–4.
- 612 Labanieh, S., 2009, *Géochimie de l'île de la Martinique aux Petites Antilles*, PhD Thesis, Université Joseph  
613 Fourier (Grenoble; 1971-2015).
- 614 Lafuente, B., Downs, R. T., Yang, H., and Stone, N., 2016, The power of databases: the RRUFF project, In

- 615 *Highlights in Mineralogical Crystallography* W. De Gruyter ed., 1–30, T. Armbruster & R. M. Danisi,  
616 Berlin.
- 617 Le Guen de Kerneizon, M., Carron, J.-P., Maury, R., Bellon, H., and Dupuy, C., 1982, Les rhyolites à fayalite et  
618 ferroaugite de Sainte-Lucie (arc insulaire des Petites Antilles), *Bulletin de Minéralogie*, **105**(2), 203–11,  
619 10.3406/bulmi.1982.7606.
- 620 Le Maitre, R. W., Streckeisen, A., Zanettin, B., Le Bas, M. J., Bonin, B., and Bateman, P., 2005, Igneous rocks:  
621 a classification and glossary of terms: recommendations of the International Union of Geological  
622 Sciences Subcommittee on the Systematics of Igneous Rocks, Cambridge University Press.
- 623 Leck, A., Le Bourdonnec, F.-X., Gratuze, B., Dubernet, S., Ameziane-Federzoni, N., Bressy-Leandri, C.,  
624 Chapoulie, R., Mazet, S., Bontempi, J.-M., and Marini, N., 2018, Provenance d'artefacts en rhyolite  
625 corse: évaluation des méthodes d'analyse géochimique, *Comptes Rendus Palevol*, **17**(3), 220–32.
- 626 Leck, A., 2022, Economie des matériaux lithiques en Corse pré- et protohistorique : dynamiques d'exploitations,  
627 circulation et diffusion de la rhyolite, PhD Thesis, Université Bordeaux Montaigne.
- 628 Lull García, J., 2014, A Stone Tool made with Libyan Desert Silica Glass from the Great Sand Sea, In *Varia*  
629 *Cybeliana* (ed. J. P. Montesino), Vol. 1, 7–10, Paris (FR).
- 630 Marwick, B., Son (VKCH), P. T., Brewer, R., and Wang, L.-Y., 2021, Tektite geoarchaeology in mainland  
631 Southeast Asia, SocArXiv, 10.31235/osf.io/93fpa.
- 632 Mills, B. J., Clark, J. J., Peeples, M. A., Haas Jr, W. R., Roberts Jr, J. M., Hill, J. B., Huntley, D. L., Borck, L.,  
633 Breiger, R. L., and Clauset, A., 2013, Transformation of social networks in the late pre-Hispanic US  
634 Southwest, *Proceedings of the National Academy of Sciences*, **110**(15), 5785–90.
- 635 Montanari, A., and Koeberl, C. (eds.), 2000, Distal ejecta and tektites, In *Impact Stratigraphy: The Italian*  
636 *Record*, 57–99, Lecture Notes in Earth Sciences, Springer, Berlin, Heidelberg, 10.1007/BFb0010315.
- 637 Murphy, A. R., 1999, The prehistory of Antigua, ceramic age: subsistence, settlement, culture and adaptation  
638 within an insular environment, , University of Calgary.
- 639 Nakagawa, S., Ivimey-Cook, E. R., Grainger, M. J., O'Dea, R. E., Burke, S., Drobnik, S. M., Gould, E.,  
640 Macartney, E. L., Martinig, A. R., Morrison, K., Paquet, M., Pick, J. L., Pottier, P., Ricolfi, L., Wilkinson,  
641 D. P., Willcox, A., Williams, C., Wilson, L. A. B., Windecker, S. M., Yang, Y., and Lagisz, M., 2023,  
642 Method Reporting with Initials for Transparency (MeRIT) promotes more granularity and accountability  
643 for author contributions, *Nature Communications*, **14**(1), 1788, 10.1038/s41467-023-37039-1.
- 644 Osinski, G. R., and Pierazzo, E., 2013, *Impact cratering: Processes and products*, John Wiley & Sons, UK.
- 645 Poupeau, G., Lugliè, C., D'Anna, A., Carter, T., Le Bourdonnec, F.-X., Bellot-Gurlet, L., and Bressy, C., 2010,  
646 Circulation et origine de l'obsidienne préhistorique en Méditerranée: un bilan de cinquante années de  
647 recherches, *Archéologie des rivages Méditerranéens*, **50**, 183–91.
- 648 Queffelec, A., Fouéré, P., Bellot-Gurlet, L., and Bérard, B., 2020, Stone ornaments from Guadeloupe and  
649 Martinique Early Ceramic period sites (200 BC – AD 400), detailed analysis and comparison with a  
650 Late Ceramic period site (AD 750 – 1000), *Journal of Caribbean Archaeology*, **20**, 1–44,  
651 <https://hal.science/hal-02916398v1/document>.
- 652 Queffelec, A., Bellot-Gurlet, L., Foy, E., Lefrais, Y., and Fritsch, E., 2021, First identification of sudoite in the  
653 Caribbean Ceramic Age lapidary craftsmanship, *Gems and Gemology*, **57**(3), 206–26,  
654 <https://dx.doi.org/10.5741/GEMS.57.3.206>.
- 655 Queffelec, A., 2022, Parures amérindiennes en matériaux lithiques dans les Antilles à l'Âge Céramique : de la  
656 caractérisation à la répartition spatiale et chronologique, PhD Thesis, Université de Bordeaux.
- 657 Queffelec, A., 2023, Diversity and similarity in the Ceramic Age lapidary production in the Caribbean islands,  
658 SocArXiv, 10.31235/osf.io/r9vmp.
- 659 Queffelec, A., Delvigne, V., Leck, A., Parthenay, M. de, Bellot-Gurlet, L., Leandri-Bressy, C., Shearn, I., and  
660 Stouvenot, C., 2023, Lithic raw materials provenance in the Caribbean islands: flint, jasper, obsidian  
661 and so on., SocArXiv, 10.31235/osf.io/pqzux.
- 662 Rehren, T., Belgia, T., Jambon, A., Káli, G., Kasztovszky, Z., Kis, Z., Kovács, I., Maróti, B., Martínón-Torres,  
663 M., and Miniaci, G., 2013, 5,000 years old Egyptian iron beads made from hammered meteoritic iron,  
664 *Journal of Archaeological Science*, **40**(12), 4785–92.
- 665 Reid, B. A., 2018, *The archaeology of Caribbean and Circum-Caribbean farmers (6000 BC-AD 1500)*,  
666 Routledge.
- 667 Rochette, P., Beck, P., Bizzarro, M., Braucher, R., Cornec, J., Debaille, V., Devouard, B., Gattacceca, J.,  
668 Jourdan, F., Moustard, F., Moynier, F., Nomade, S., and Reynard, B., 2021, Impact glasses from  
669 Belize represent tektites from the Pleistocene Pantasma impact crater in Nicaragua, *Communications*  
670 *Earth & Environment*, **2**(1), 1–8, 10.1038/s43247-021-00155-1.
- 671 Rodriguez, M., 2001, Excavations at Maruca, a preceramic site in southern Puerto Rico, In *Proceedings of the*  
672 *17th Congress of the International Association for Caribbean Archaeology*, Basse-Terre.
- 673 Rodriguez Ramos, R., 2001, Lithic reduction trajectories at La Hueca and Punta Candelerero sites, Puerto Rico:  
674 A preliminary report, In *Proceedings of the 18th Congress of the International Association for*  
675 *Caribbean Archaeology*, 216–32, Grenada.
- 676 Rodríguez Ramos, R., 2013, Isthmo–Antillean Engagements, In *The Oxford Handbook of Caribbean*  
677 *Archaeology* (eds. W. F. Keegan, C. L. Hofman, and R. Rodríguez Ramos), 155–70, Oxford University  
678 Press, Oxford.
- 679 Romon, T., 2004, Bisdary (Gourbeyre, Guadeloupe). Diagnostic Archéologique. Rapport de diagnostic  
680 archéologique, SRA Guadeloupe.
- 681 Rouse, I., 1992, *The Tainos: rise & decline of the people who greeted Columbus*, Yale University Press.



- 682 Sellier-Ségard, N., 2001, Place Saint-François, Basse-Terre (Guadeloupe). Rapport de fouille archéologique,  
683 INRAP, Basse-Terre, Guadeloupe.
- 684 Sellier-Ségard, N., and Casagrande, F., 2016, Les assemblages lithiques des occupations cedrosan-saladoïdes  
685 et troumassan-troumassoïdes., In *Stade José Bade : Les occupations cedrosan-saladoïde et*  
686 *troumassan-troumassoïde de Tourlourous* (ed. N. Serrand), Vol. 1, 237–74, SRA Guadeloupe.
- 687 Shackley, M. S., 1998, Current Issues and Future Directions in Archaeological Volcanic Glass Studies: An  
688 Introduction, In *Archaeological obsidian studies: method and theory* (ed. M. S. Shackley), Vol. 3,  
689 Springer Science & Business Media.
- 690 Shearn, I., 2014, Pre-Columbian Regional Community Integration in Dominica, West Indies, , University of  
691 Florida Gainesville.
- 692 Smith, A. L., Roobol, M. J., and Gunn, B. M., 1980, The Lesser Antilles—a discussion of the island arc  
693 magmatism, *Bulletin Volcanologique*, **43**(2), 287–302.
- 694 Stouvenot, C., and Casagrande, F., 2017, Recherche des occupations précolombiennes dans les hauteurs de  
695 Capesterre-Belle-Eau (Guadeloupe) : résultats préliminaires, In *Proceedings of the 26th Congress of*  
696 *the International Association for Caribbean Archaeology*, Saint-Martin, Sint-Maarten.
- 697 Tuffen, H., Flude, S., Berlo, K., Wadsworth, F., and Castro, J., 2020, Obsidian, In *Encyclopedia of Geology* 2nd  
698 ed. (eds. D. Alderton, and S. A. Elias), 196–208, Academic Press.
- 699 de Waal, M. S., and Knippenberg, S., 2020, On the reconstruction of prehistoric social territories: The La  
700 Désirade lithic workshops and the distribution of La Désirade chert (French West Indies), *Journal of*  
701 *Lithic Studies*, **7**(2), 22 p., 10.2218/jls.3061.
- 702 Walker, J. B., 1979, Analysis and replication of lithic artifacts from the Sugar Factory pier site, St. Kitts, In  
703 *Proceedings of the 8th International Congress for the study of Pre-Columbian cultures of the Lesser*  
704 *Antilles*, 69–79, St. Kitts.

# Supplementary information



706

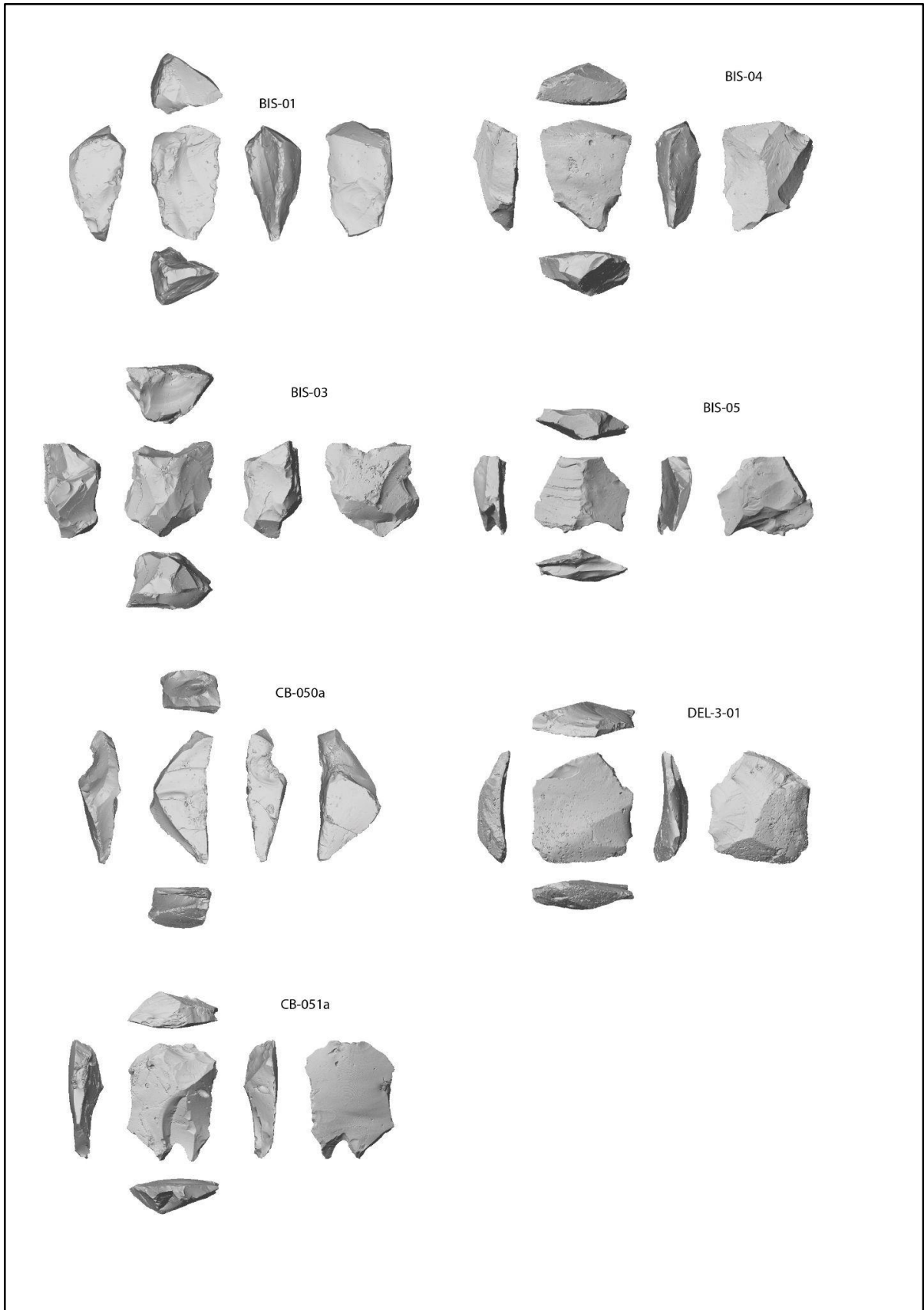
mod. after  
Fouéré 2006

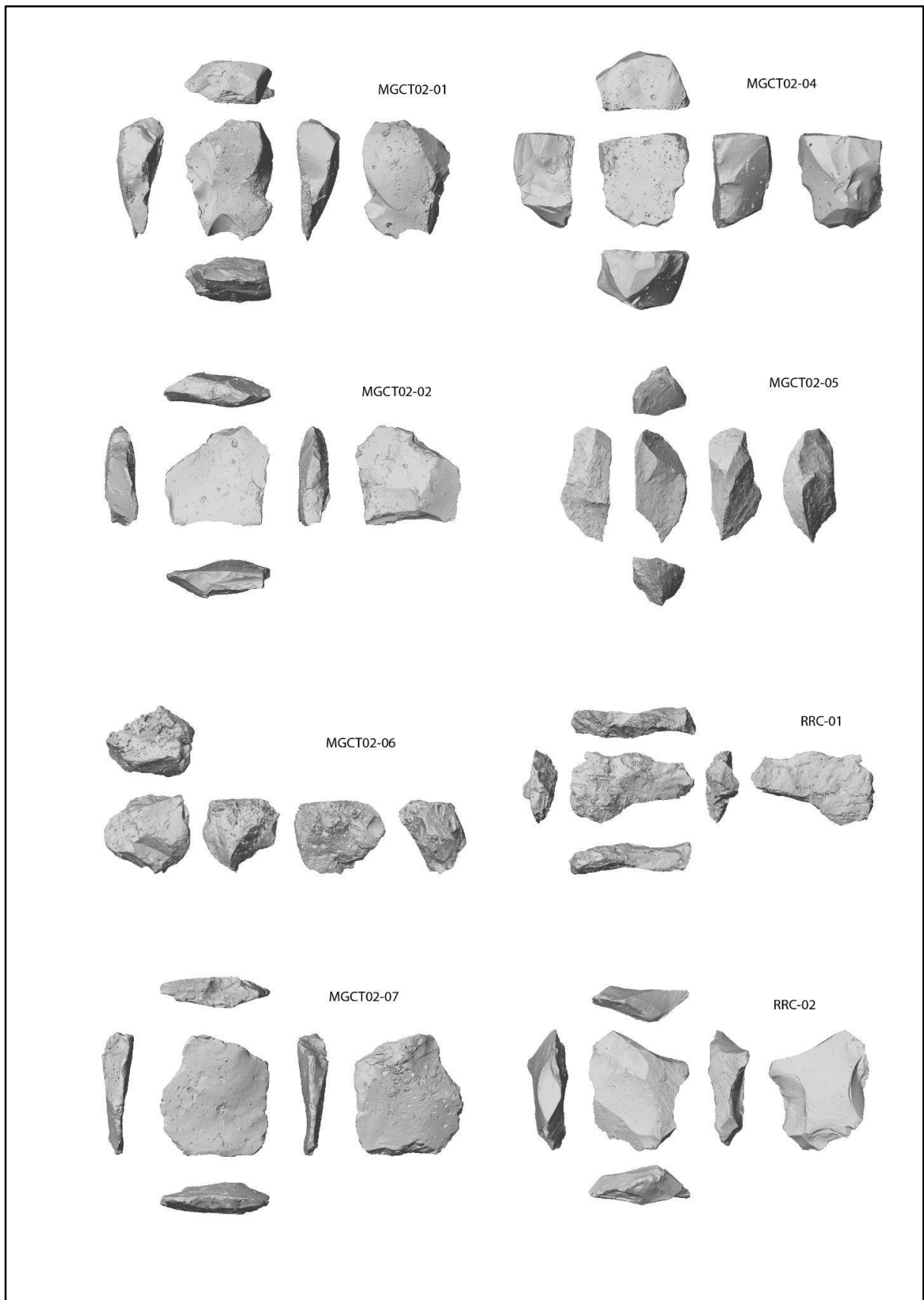
707

Figure S1 Technical drawing of a selection of the most interesting artefacts on the technological point of view.

708

Drawings by P. Gaussein except BIS-02, BIS-03, and BIS-04 by P. Fouéré. Infographic by AQ.





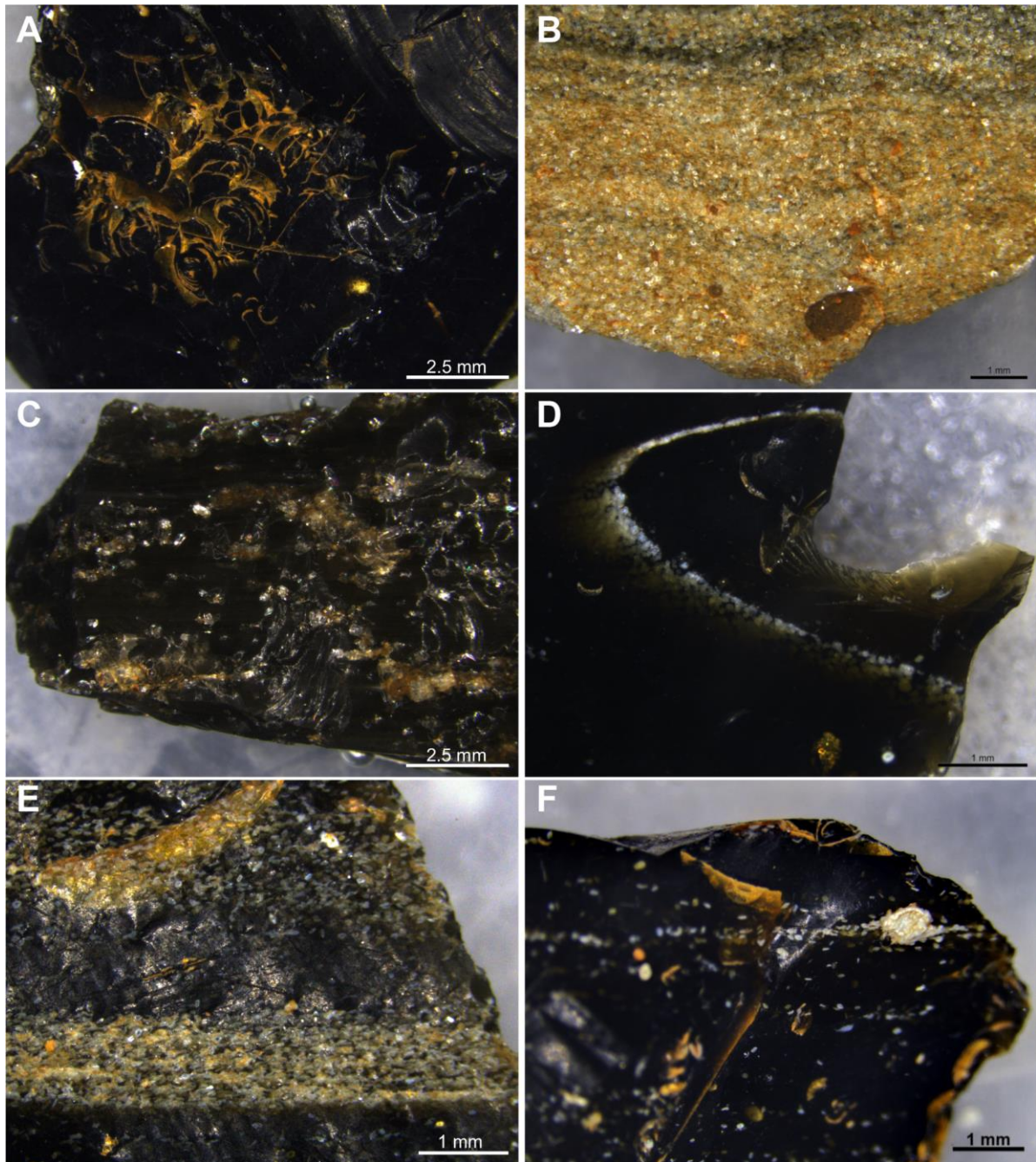
710

711 Figure S2 Developed view of the surface of artefacts extracted from the 3D models from microtomography  
 712 acquisitions prior to the microsampling of two samples. Acquisition by NV, Surface extraction and infographic by  
 713 AQ



714

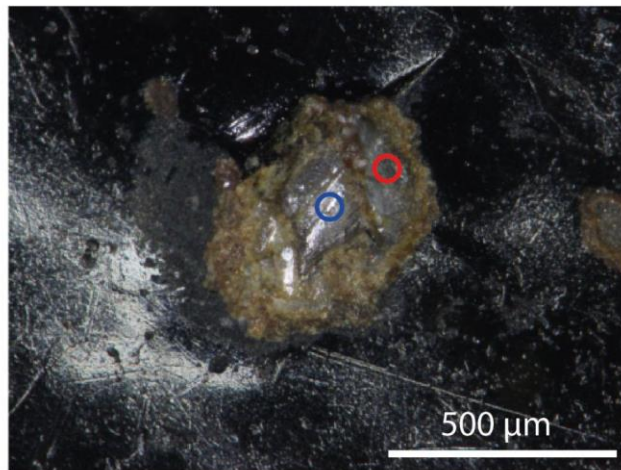
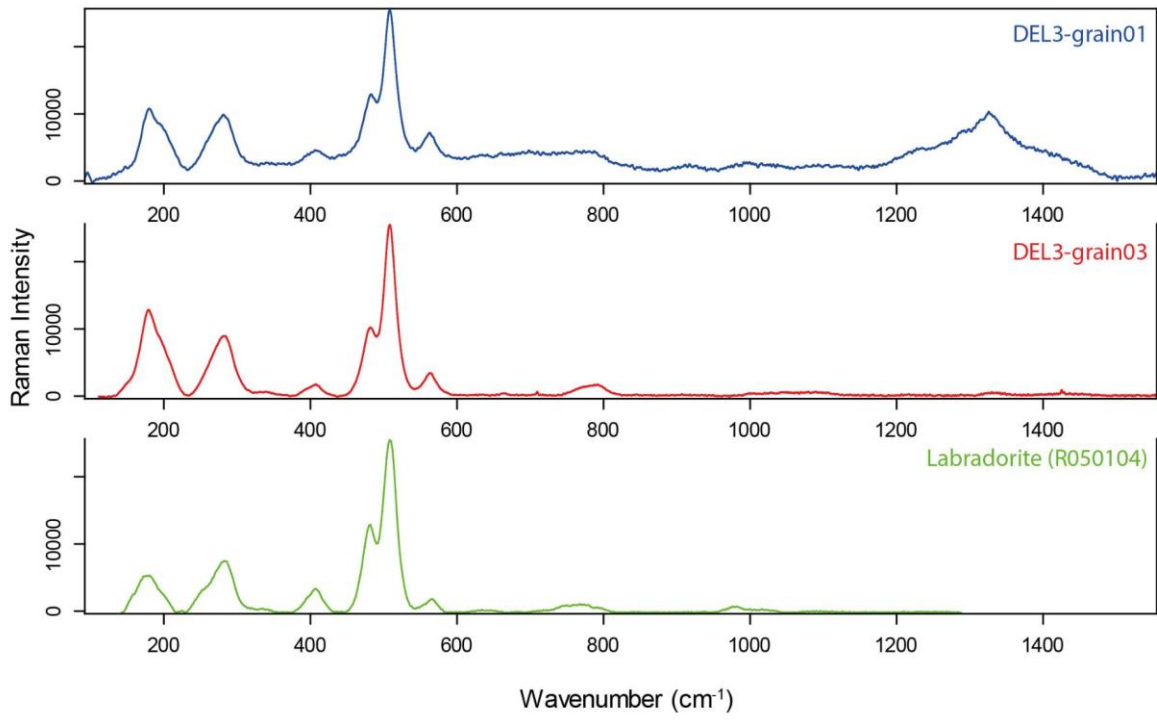
715 Figure S3 (A) Glassy pumice in an ash tuff in the process of weathering, Volcan du Tuf. (B) Block of tuff from  
716 the Volcan du Tuf containing numerous glassy inclusions, some blocks must have contained inclusions large  
717 enough to be cut. (C) Porphyritic andesites from Bois Joli (Les Saintes) containing large quantities of glass but  
718 not enough to make tools.



720

721 Figure S4 Microphotographs of archaeological samples, showing perlitic texture in BIS-03 (A), the high quantify  
 722 of crystals in RRC-02 (B), the quasi-absence of crystals in RRC-01 (C), and the planar distribution of crystals in  
 723 CB051 (D), BIS-02 (E) and BIS-01 (F). Pictures and infographic by AQ

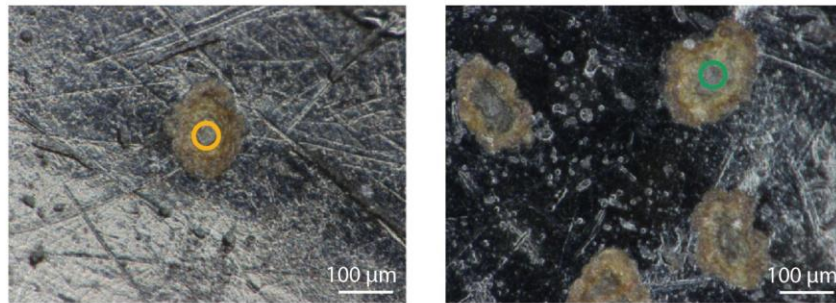
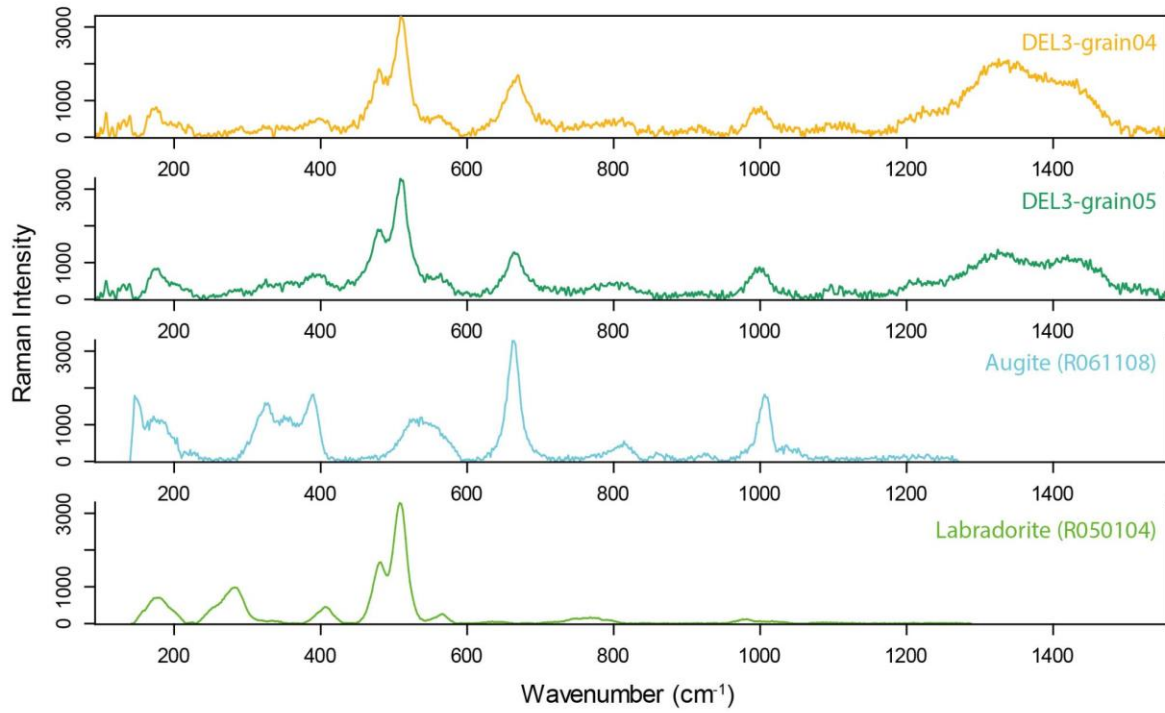
724



725

726

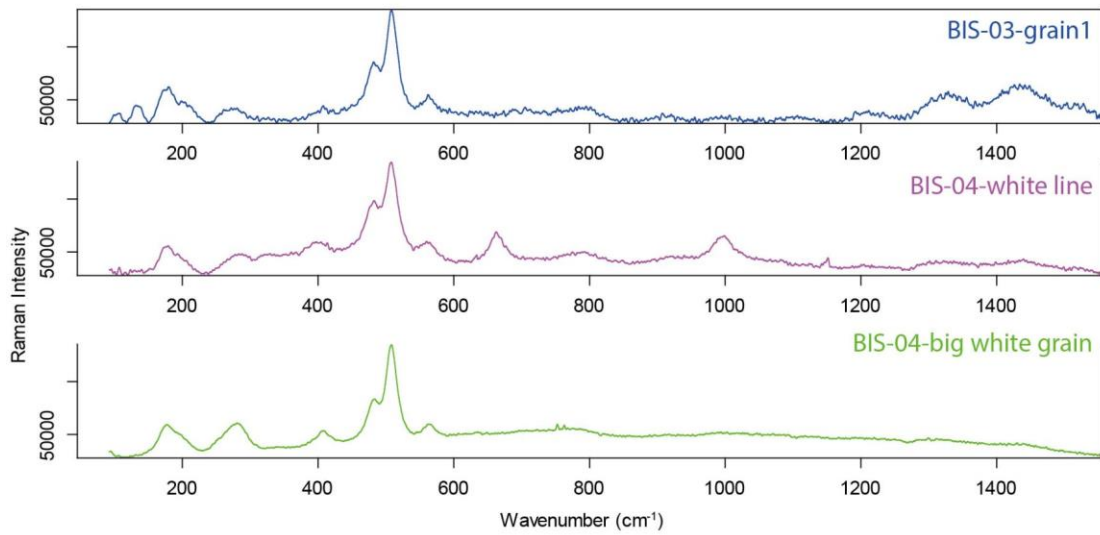
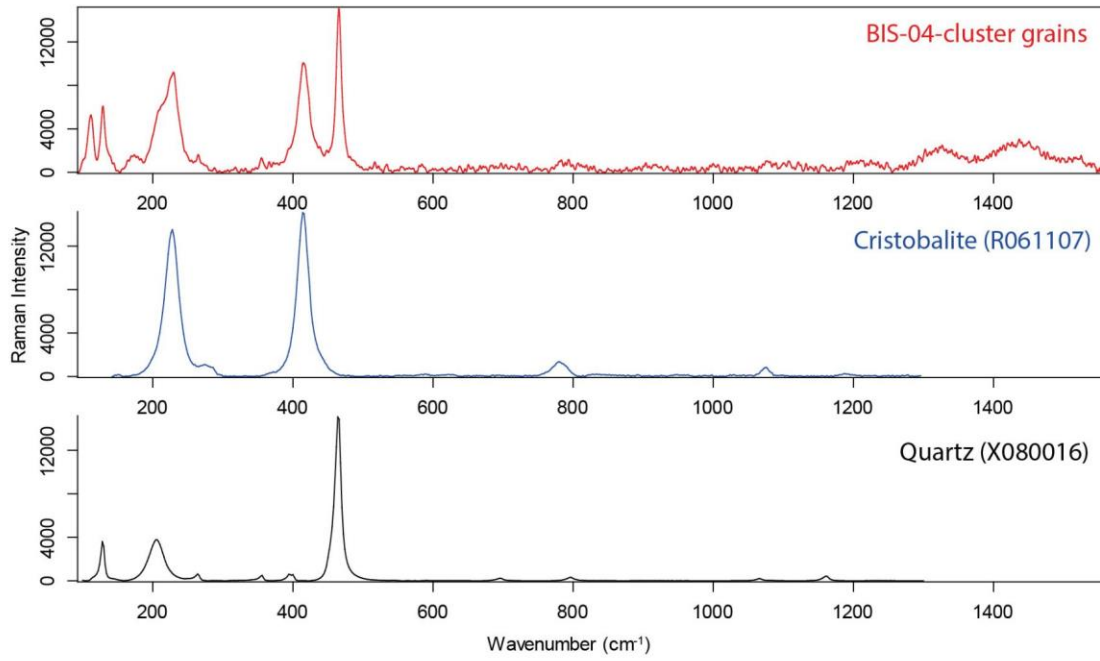
Figure S5-1 Raman spectra acquired on two different grains (one in photo) in the DEL-3-1 flake.



727

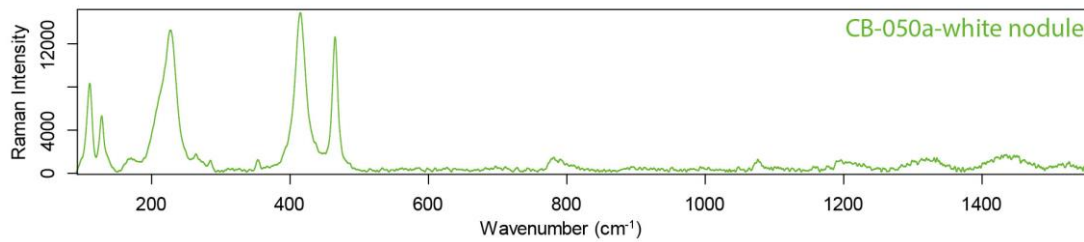
728 Figure S5-2 Raman spectra acquired on two different grains (colours of circle in picture is equivalent to colours of spectra) in the DEL-3-1 flake. Despite the measured spot size of a few microns, both spectra exhibit a mix of  
 729 labradorite and augite.  
 730





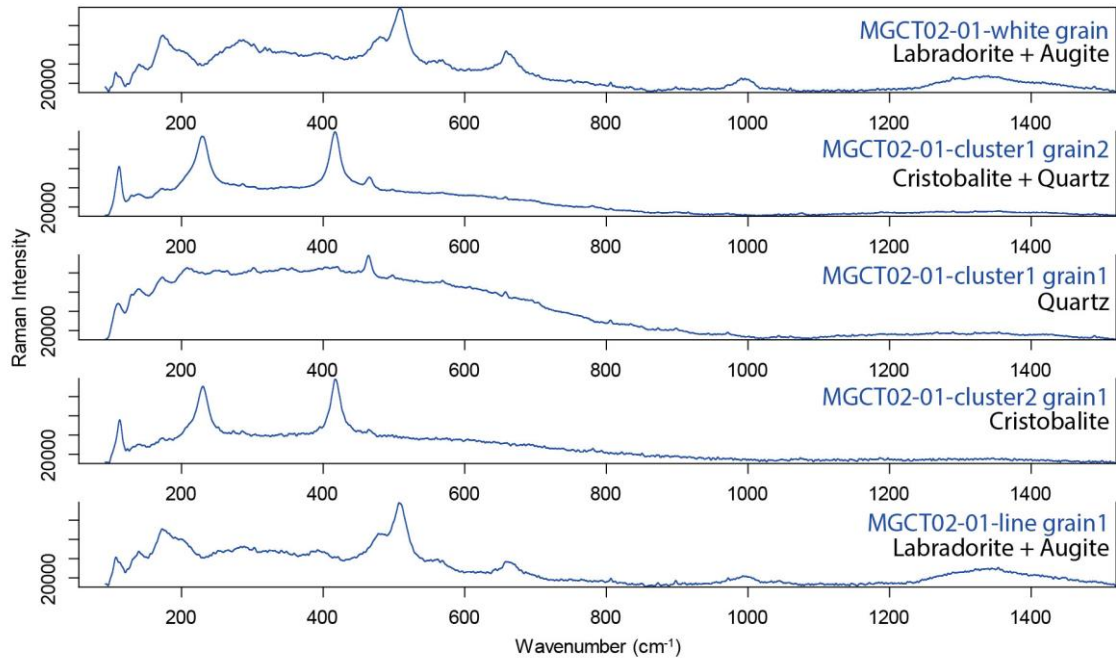
731

732 Figure S5-3 Raman spectra acquired in clusters of grains on the BIS-04 and BIS-04 artefacts, showing the  
 733 presence of quartz and cristobalite, as well as labradorite.



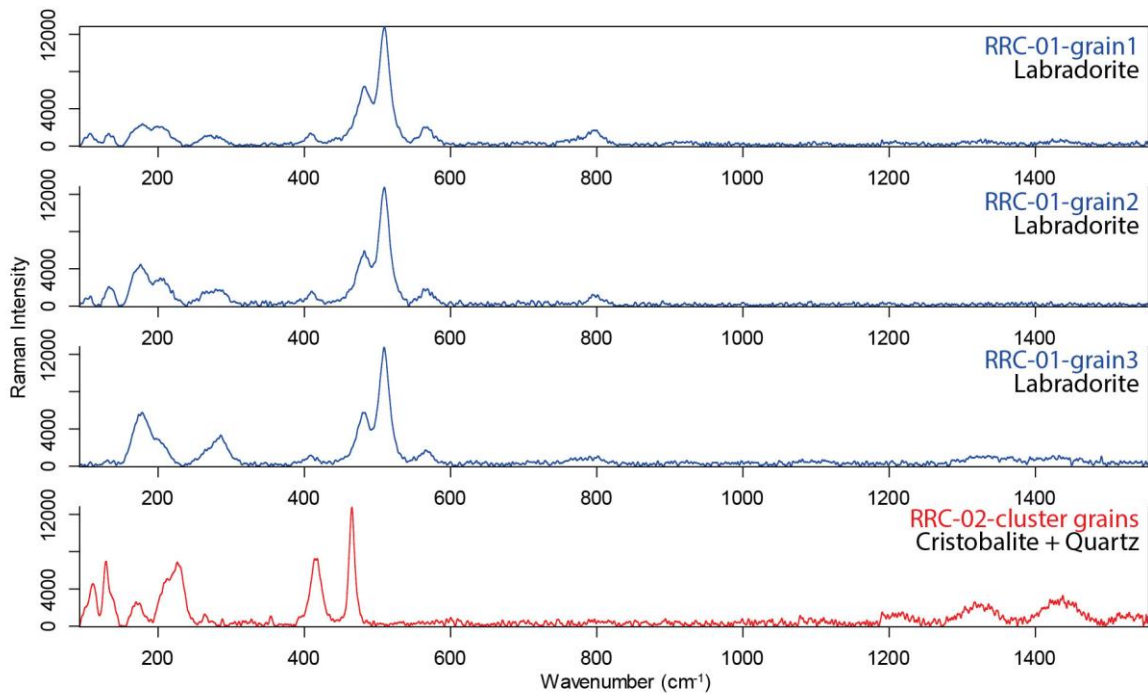
734

735 Figure S5-4 Raman spectrum acquired on a white nodule on the CB-050a artefact, showing the presence of  
 736 both quartz and cristobalite in the same analysed spot.



737  
738  
739

Figure S5-5 Raman spectra acquired in several clusters or lines of grains on the MGCT02-01 artefact showing the presence of quartz, cristobalite, augite, and labradorite in these crystallisation spots.

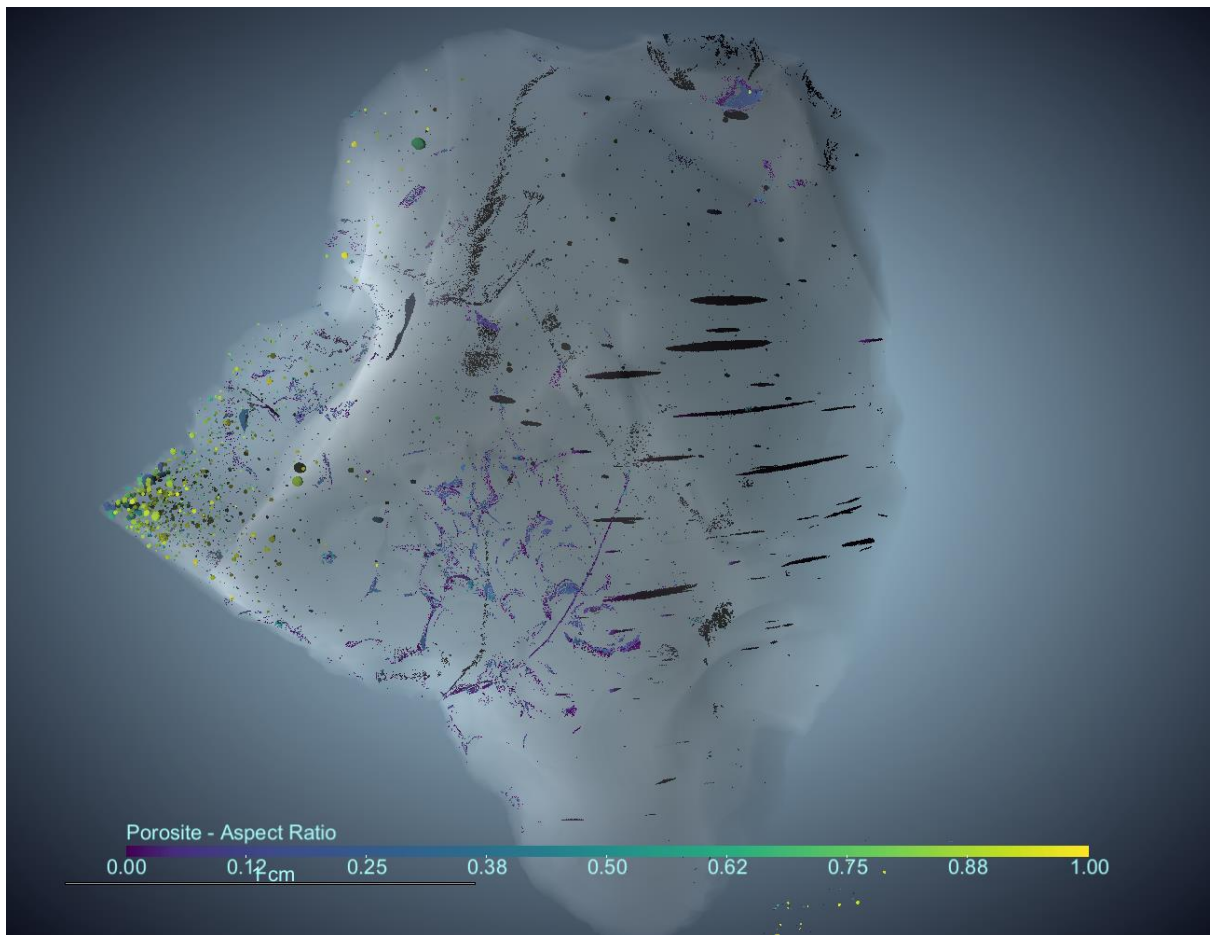


740

741  
742

Figure S5-6 Raman spectra acquired on several grains on the RRC-01 and RRC-02 artefacts, labradorite on the former, and of quartz and cristobalite in the later

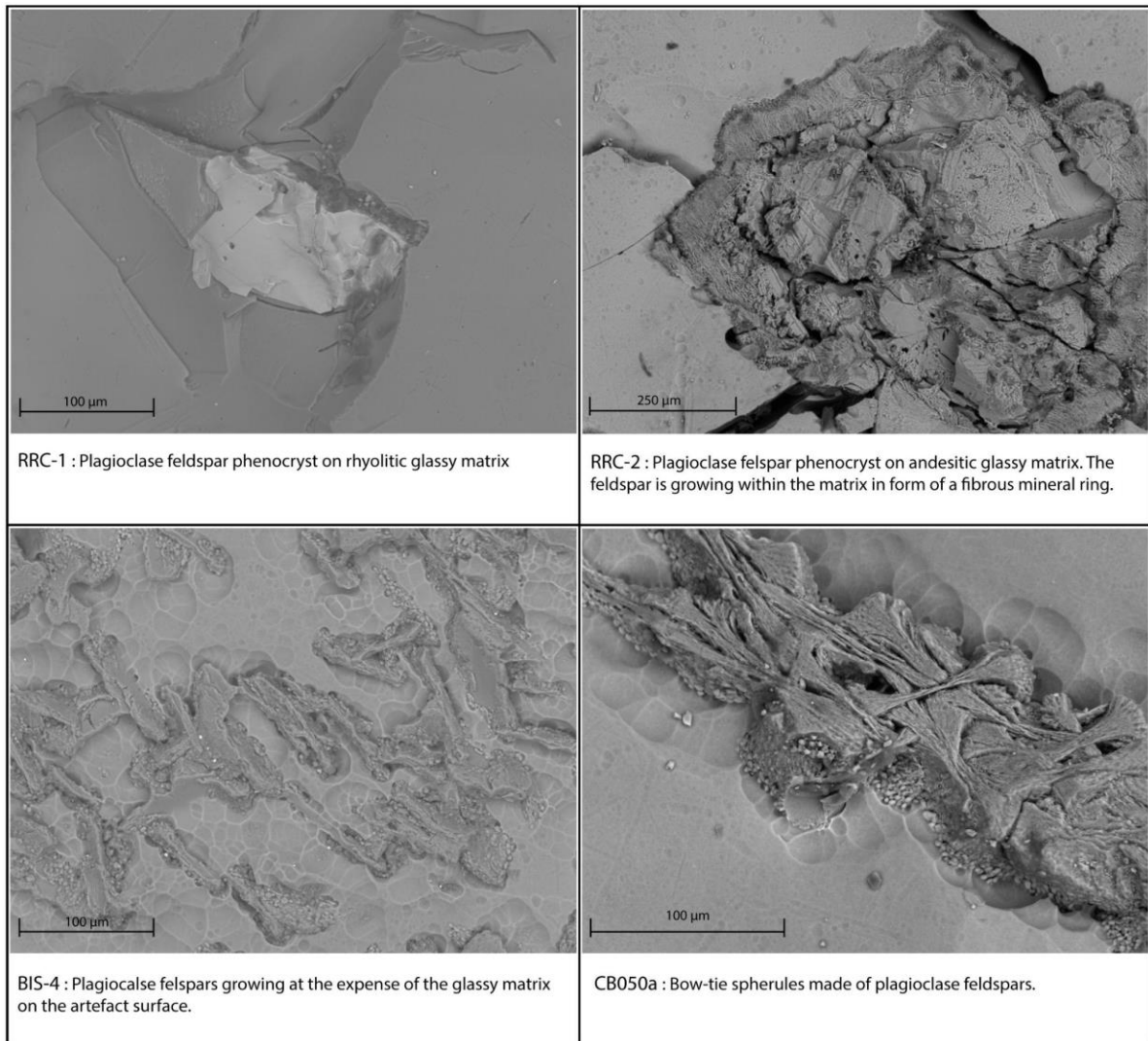
743



744

745 Figure S6 Microtomography view of the internal distribution of bubbles in the artefact BIS-03. Pores are  
746 colourized by their sphericity. Figure by NV.

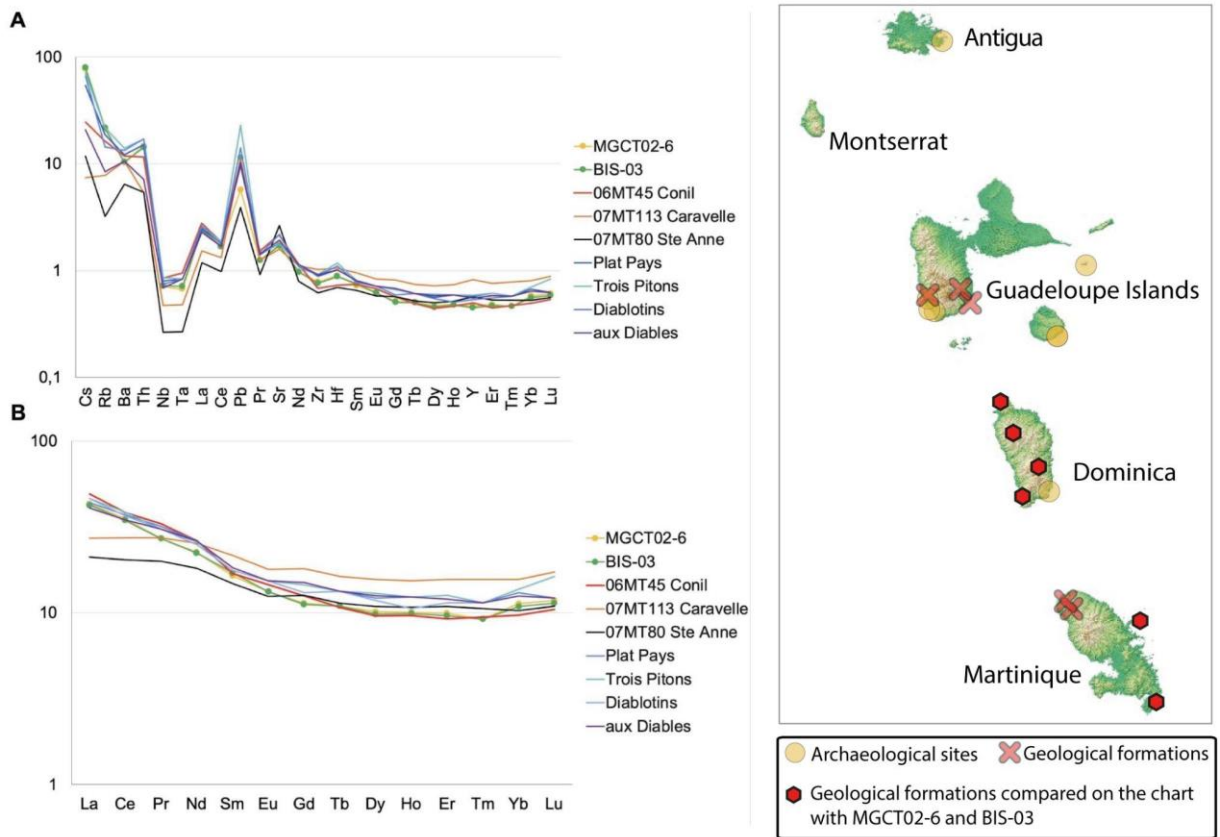
747



748

749  
750

Figure S7 Plagioclase phenocrysts and fibrous feldspar spherules in the RRC-1, RRC-2, BIS-04 and CB050a samples (after H<sub>2</sub>O<sub>2</sub> + ultrasound cleaning)



751

752 Figure S8 Comparison of archeological samples and eruption products from the east and south of Martinique  
 753 (from Labanieh, 2009) and the island of Dominica (from Howe et al., 2015). A. N-MORB-normalised trace  
 754 elements patterns. B. Chondrite-normalised REE patterns.

<b>Sample</b>	<b>Analysis per sample</b>	<b>SiO<sub>2</sub> (%)</b>	<b>Al<sub>2</sub>O<sub>3</sub> (%)</b>	<b>Fe<sub>2</sub>O<sub>3</sub> (%)</b>	<b>MnO (%)</b>	<b>CaO (%)</b>	<b>Na<sub>2</sub>O (%)</b>	<b>K<sub>2</sub>O (%)</b>	<b>TiO<sub>2</sub> (%)</b>	<b>Zn (µg/g)</b>	<b>Ga (µg/g)</b>	<b>Rb (µg/g)</b>	<b>Sr (µg/g)</b>	<b>Zr (µg/g)</b>
Volc.Tuf	2	77.84	12.43	2.04	0.07	1.33	3.85	1.8	0.12	39	14	62	106	174
RRC-01	2	78.31	12.58	1.71	0.06	1.3	3.56	1.89	0.12	34	12	56	100	173
RRC-02	2	60.92	17.91	5.61	0.12	5.5	2.82	1.06	0.49	62	15	78	185	93
PSF-01	2	61.83	17.11	5.66	0.12	5.7	2.73	1.06	0.49	65	18	96	237	96
MGCT02-01	2	61.68	17.05	5.22	0.11	5.61	3.07	1.06	0.48	60	16	79	231	99
MGCT02-02	1	61.31	16.92	5.57	0.12	5.64	3.01	1.05	0.49	64	18	73	237	92
MGCT02-03	1	62.1	17.11	5.53	0.11	5.71	2.61	1.07	0.5	68	19	80	275	109

MGCT02-04	1	61.52	17	5.4	0.11	5.65	2.57	1.29	0.49	60	21	85	263	114
MGCT02-05	1	61.9	17.04	5.11	0.11	5.59	3.05	1.07	0.49	59	16	90	240	102
MGCT02-06	1	61.62	16.99	5.26	0.11	5.64	3.1	1.05	0.49	60	17	68	243	112
MGCT02-07	1	61.6	17.05	5.24	0.11	5.62	3.1	1.06	0.49	59	17	89	242	110
BIS-01	1	62.25	17.17	4.82	0.1	5.55	3.07	1.06	0.47	54	16	85	227	102
BIS-02	1	61.49	17.02	5.38	0.11	5.59	3.06	1.07	0.49	62	15	75	232	106
BIS-03	1	62.13	17.33	5.37	0.11	5.73	2.58	1.07	0.48	62	15	64	229	92
BIS-04	2	61.73	17.08	5.23	0.11	5.58	3.07	1.06	0.47	59	16	74	219	94
CB-051a	1	61.75	17.06	5.19	0.11	5.57	3.11	1.07	0.47	56	16	76	200	89

CB-050a	1	61.46	17.01	5.38	0.12	5.64	3.07	1.07	0.49	57	17	81	202	91
---------	---	-------	-------	------	------	------	------	------	------	----	----	----	-----	----

756

Table S1 Compositions measured in 2007 by PIXE on archaeological artefacts and a geological sample from the Volcan du Tuf.



<b>Sample</b>	<b>Na<sub>2</sub>O (%)</b>	<b>MgO (%)</b>	<b>Al<sub>2</sub>O<sub>3</sub> (%)</b>	<b>SiO<sub>2</sub> (%)</b>	<b>K<sub>2</sub>O (%)</b>	<b>CaO (%)</b>	<b>TiO<sub>2</sub> (%)</b>	<b>MnO (%)</b>	<b>Fe<sub>2</sub>O<sub>3</sub> (%)</b>
BIS-01	3.5	2.7	17.4	62.6	1.1	6.3	0.5	0.1	5.5
BIS-01	3.5	2.7	17.6	62.7	1.2	6.3	0.5	0.1	5.3
BIS-01	3.5	2.7	17.6	62.7	1.1	6.2	0.5	0.1	5.3
BIS-01	3.5	2.7	17.5	62.8	1.1	6.2	0.5	0.1	5.3
BIS-02	3.6	2.7	17.6	62.8	1.1	6.2	0.5	0.1	5.0
BIS-02	3.2	2.7	17.9	62.7	1.2	6.1	0.5	0.1	5.5
BIS-02	2.9	2.6	17.9	62.9	1.1	6.0	0.5	0.1	5.6
BIS-02 polished	3.5	2.7	17.3	62.7	1.1	6.4	0.5	0.1	5.5
BIS-02 polished	3.5	2.7	17.3	62.4	1.2	6.5	0.5	0.1	5.7
BIS-02 polished	3.3	2.6	17.3	62.5	1.2	6.6	0.6	0.2	5.7
BIS-02 polished	3.5	2.7	17.4	62.8	1.1	6.3	0.5	0.1	5.5
BIS-02 polished	3.2	2.7	17.4	62.7	1.2	6.4	0.6	0.1	5.6

BIS-02 polished	3.0	2.6	17.2	62.5	1.2	6.7	0.6	0.1	6.0
BIS-02 polished	3.4	2.8	17.5	62.8	1.2	6.3	0.6	0.1	5.3
BIS-03	3.5	2.7	17.5	62.9	1.1	6.2	0.5	0.1	5.3
BIS-03	3.6	2.7	17.4	62.7	1.1	6.2	0.5	0.1	5.3
BIS-03	3.8	2.8	17.4	62.5	1.1	6.3	0.5	0.1	5.3
BIS-03	3.6	2.7	17.4	62.7	1.1	6.2	0.5	0.2	5.3
BIS-03	3.5	2.7	17.3	62.7	1.2	6.3	0.6	0.1	5.5
BIS-03	3.7	2.8	17.6	63.1	1.1	6.0	0.5	0.1	4.9
BIS-04	3.5	2.7	17.5	63.1	1.1	6.2	0.5	0.1	5.1
BIS-04	3.5	2.7	17.4	63.0	1.1	6.2	0.5	0.1	5.1
BIS-04	3.4	2.7	17.4	62.6	1.2	6.4	0.5	0.2	5.5
BIS-04	3.5	2.7	17.4	62.7	1.2	6.3	0.5	0.1	5.5
BIS-04	3.5	2.7	17.4	62.7	1.2	6.3	0.5	0.1	5.4
BIS-04	3.4	2.7	17.6	62.8	1.2	6.2	0.5	0.1	5.3
BIS-04	3.8	2.8	17.8	63.5	1.1	5.8	0.5	0.1	4.5

BIS-04	3.5	2.7	17.4	62.7	1.2	6.3	0.6	0.1	5.4
BIS-04	3.6	2.7	17.5	63.1	1.1	6.1	0.5	0.1	5.0
BIS-04	3.5	2.7	17.3	63.2	1.1	6.2	0.5	0.1	5.0
BIS-04	3.4	2.2	15.2	64.4	1.2	5.6	0.9	0.2	6.6
BIS-04	3.4	2.7	17.5	62.6	1.2	6.4	0.5	0.1	5.4
BIS-04	3.4	2.7	17.5	62.7	1.2	6.3	0.5	0.1	5.4
BIS-04	3.6	2.7	17.6	62.9	1.1	6.1	0.5	0.1	5.1
BIS-04	3.6	2.7	17.7	63.0	1.1	6.1	0.5	0.1	5.0
BIS-04	3.6	2.7	17.4	62.6	1.1	6.3	0.5	0.1	5.4
CB-051a	3.6	2.7	17.4	62.8	1.1	6.2	0.5	0.1	5.3
CB-051a	3.6	2.8	17.5	63.1	1.1	6.1	0.5	0.1	5.1
CB-051a	3.6	2.8	17.4	62.8	1.2	6.1	0.5	0.2	5.3
CB-051a	3.5	2.7	17.4	62.6	1.1	6.3	0.5	0.1	5.4
CB-050a	3.5	2.7	17.6	62.8	1.1	6.2	0.5	0.1	5.2
CB-050a	4.0	2.8	17.3	61.9	1.2	6.3	0.5	0.1	5.1
CB-050a	3.6	2.7	17.6	62.8	1.1	6.2	0.5	0.1	5.2

CB-050a	3.7	2.8	17.9	63.2	1.1	5.8	0.5	0.1	4.7
DEL-03-1	3.4	2.7	17.5	62.6	1.2	6.2	0.5	0.1	5.4
DEL-03-1	3.4	2.7	17.6	62.5	1.2	6.3	0.5	0.2	5.5
DEL-03-1	3.4	2.7	17.5	62.4	1.2	6.3	0.5	0.1	5.6
DEL-03-1	3.4	2.7	17.7	61.8	1.2	6.3	0.5	0.1	5.7
DEL-03-1	3.4	2.7	17.6	62.4	1.2	6.2	0.5	0.1	5.6
MGCT02-01	3.5	2.7	17.6	62.9	1.1	6.1	0.5	0.1	5.2
MGCT02-01	3.6	2.7	17.5	62.9	1.1	6.1	0.5	0.1	5.2
MGCT02-01	3.5	2.7	17.6	62.5	1.2	6.2	0.6	0.1	5.5
MGCT02-01	2.8	2.3	16.4	55.8	1.1	5.6	0.5	0.2	5.6
MGCT02-01	3.6	2.7	17.6	63.1	1.1	6.1	0.5	0.1	5.1
MGCT02-02	3.5	2.7	17.4	62.6	1.1	6.3	0.5	0.1	5.5
MGCT02-02	3.5	2.7	17.4	62.7	1.1	6.3	0.5	0.1	5.4

MGCT02-02	3.4	2.7	17.3	62.6	1.2	6.3	0.5	0.1	5.6
MGCT02-02	3.5	2.7	17.4	62.4	1.2	6.4	0.6	0.1	5.6
MGCT02-02	3.8	2.8	17.7	63.4	1.1	5.8	0.5	0.1	4.7
MGCT02-02	3.7	2.8	17.6	63.2	1.1	5.9	0.5	0.1	4.9
MGCT02-02	3.5	2.7	17.3	62.7	1.2	6.2	0.5	0.2	5.4
MGCT02-02	3.5	2.7	17.3	62.5	1.2	6.3	0.5	0.1	5.6
MGCT02-02	3.8	2.8	17.8	63.5	1.1	5.7	0.5	0.1	4.5
MGCT02-02	3.5	2.7	17.4	62.7	1.2	6.3	0.5	0.1	5.5
MGCT02-05	3.6	2.7	17.6	62.3	1.1	6.4	0.5	0.1	5.3
MGCT02-05	3.7	2.8	17.8	63.0	1.1	6.0	0.5	0.1	4.7
MGCT02-06	3.5	2.7	17.5	62.9	1.1	6.2	0.6	0.1	5.3
MGCT02-06	3.1	2.7	17.5	63.0	1.1	6.3	0.6	0.2	5.4

MGCT02-06	3.5	2.7	17.5	62.8	1.1	6.2	0.5	0.1	5.3
MGCT02-06	3.5	2.7	17.5	62.8	1.1	6.2	0.5	0.1	5.3
MGCT02-06	3.6	2.7	17.5	62.9	1.1	6.1	0.5	0.1	5.2
MGCT02-06	3.6	2.7	17.4	62.5	1.1	6.3	0.5	0.1	5.4
MGCT02-06 polished	3.5	2.7	17.5	62.9	1.1	6.2	0.5	0.1	5.3
MGCT02-06 polished	3.4	2.6	17.2	62.5	1.2	6.5	0.6	0.2	5.8
MGCT02-06 polished	2.9	2.6	17.2	62.8	1.2	6.6	0.6	0.1	5.8
MGCT02-06 polished	3.1	2.4	16.7	63.6	1.3	6.3	0.5	0.1	5.8
MGCT02-06 polished	3.0	2.6	17.1	62.7	1.2	6.6	0.6	0.1	6.0
MGCT02-06 polished	3.1	2.7	17.6	63.2	1.1	6.2	0.5	0.1	5.3
MGCT02-06 polished	2.9	2.6	17.2	62.9	1.2	6.6	0.6	0.2	5.9
MGCT02-06 polished	3.2	2.7	17.5	63.1	1.1	6.3	0.6	0.1	5.4

MGCT02-06 polished	3.2	2.6	17.2	62.4	1.2	6.6	0.6	0.1	5.9
MGCT02-06 polished	3.1	2.7	17.4	62.7	1.2	6.5	0.5	0.1	5.7
MGCT02-06 polished	2.7	2.5	16.9	62.4	1.2	7.0	0.6	0.1	6.5
MGCT02-07	3.5	2.7	17.4	62.6	1.1	6.3	0.5	0.1	5.5
MGCT02-07	3.4	2.7	17.3	62.6	1.2	6.4	0.6	0.1	5.6
MGCT02-07	3.5	2.7	17.4	62.6	1.2	6.3	0.5	0.1	5.4
MGCT02-07	3.4	2.7	17.4	62.6	1.2	6.3	0.5	0.1	5.4
RRC-01	4.6	0.1	12.7	77.4	2.0	1.4	0.1	0.1	1.5
RRC-01	4.5	0.1	12.6	77.0	2.0	1.4	0.2	0.1	1.9
RRC-01	4.3	0.1	12.6	77.2	2.1	1.4	0.1	0.1	1.7
RRC-01	4.5	0.1	13.2	76.4	2.0	1.7	0.1	0.1	1.8
RRC-01	4.7	0.2	14.2	73.7	2.0	2.7	0.1	0.1	1.9
RRC-01	4.5	0.1	12.8	77.4	2.0	1.4	0.1	0.1	1.4

RRC-01	4.5	0.1	12.8	77.6	1.9	1.3	0.1	0.1	1.4
RRC-01	4.3	0.1	12.9	76.8	1.9	1.6	0.1	0.1	1.8
RRC-01	4.8	0.1	12.8	76.3	2.0	1.5	0.1	0.1	1.9
RRC-01	4.6	0.1	12.7	76.9	2.0	1.4	0.1	0.1	1.7
RRC-01	3.4	0.2	13.0	77.3	1.9	1.5	0.3	0.1	2.0
RRC-01	4.2	0.1	12.8	77.5	2.0	1.4	0.1	0.1	1.6
RRC-01	3.2	0.2	13.2	77.3	1.8	1.7	0.2	0.1	2.1
RRC-02	3.3	2.7	17.5	62.4	1.2	6.3	0.6	0.1	5.6
RRC-02	3.3	2.6	17.7	62.5	1.2	6.3	0.6	0.1	5.5
RRC-02	3.2	2.6	17.6	62.0	1.3	6.5	0.6	0.2	6.0
RRC-02	3.4	2.7	17.5	62.7	1.2	6.3	0.5	0.1	5.5
RRC-02	3.4	2.6	17.3	61.8	1.3	6.6	0.6	0.2	6.2
RRC-02	3.5	2.0	18.4	60.6	1.0	7.1	0.6	0.1	6.4
RRC-02	2.8	2.6	17.5	62.5	1.3	6.4	0.6	0.1	5.9
RRC-02	3.4	2.1	18.7	60.9	1.0	6.7	0.6	0.1	6.3
RRC-02	2.8	2.6	17.5	62.4	1.3	6.5	0.6	0.1	6.0



RRC-02	3.1	2.6	17.5	62.7	1.3	6.4	0.5	0.1	5.6
--------	-----	-----	------	------	-----	-----	-----	-----	-----

758

Table S2 Compositions measured by SEM-EDS on the glassy matrix of some archaeological artefacts.

<b>Sample</b>	<b>MnO (µg/g)</b>	<b>Fe<sub>2</sub>O<sub>3</sub> (µg/g)</b>	<b>Zn (µg/g)</b>	<b>Ga (µg/g)</b>	<b>Rb (µg/g)</b>	<b>Sr (µg/g)</b>	<b>Y (µg/g)</b>	<b>Zr (µg/g)</b>	<b>Nb (µg/g)</b>	<b>Pb (µg/g)</b>
BoisJoli1	553	16498	45	21	19	305	18	100	19	4
BoisJoli1	892	23696	64	20	23	253	20	110	20	4
BoisJoli1	1543	34378	72	19	27	252	25	127	20	5
BoisJoli1	525	18725	61	17	19	250	17	111	18	3
BoisJoli2	575	19565	34	19	31	325	31	100	18	4
BoisJoli2	2982	66435	76	15	30	220	30	98	18	4
BoisJoli2	993	28943	38	17	33	310	30	106	19	4
Est.Carbet1	1159	47658	31	13	17	252	22	74	15	1
Est.Carbet1	982	42236	28	15	14	266	18	62	15	1
Est.Carbet1	1322	56028	32	14	15	251	20	72	15	2
Riv.Capesterre 1	2125	67503	66	15	20	188	46	107	18	4
Riv.Capesterre 1	1745	66798	65	13	20	180	45	107	17	3
Riv.Capesterre 1	1736	66898	65	14	20	182	46	107	18	2

Volc.Tuf	882	21571	35	11	45	114	42	163	20	5
Volc.Tuf	1003	23981	38	12	50	131	48	194	23	5
Volc.Tuf	798	19817	32	12	42	130	40	149	20	4
Volc.Tuf	1173	28389	37	11	43	106	43	179	20	5

760

Table S3 Trace elements measured by ED-XRF on geological samples.

<b>Sample</b>	<b>MnO (µg/g)</b>	<b>Fe<sub>2</sub>O<sub>3</sub> (µg/g)</b>	<b>Zn (µg/g)</b>	<b>Ga (µg/g)</b>	<b>Rb (µg/g)</b>	<b>Sr (µg/g)</b>	<b>Y (µg/g)</b>	<b>Zr (µg/g)</b>	<b>Nb (µg/g)</b>	<b>Pb (µg/g)</b>
BIS-01	1514	57634	52	12	30	203	19	76	17	4
BIS-01	1516	58066	51	12	31	204	19	76	16	5
BIS-02	1658	62582	65	13	34	220	20	82	17	5
BIS-02	1732	65767	69	16	36	237	21	87	18	5
BIS-02	1644	63785	63	14	36	239	22	88	19	5
BIS-02	1278	58544	60	14	34	207	19	82	8	6
BIS-03	1520	59139	63	13	31	206	19	77	16	4
BIS-03	1538	62115	73	14	33	217	20	82	17	5
BIS-03	1508	60754	73	13	33	220	20	82	17	5
BIS-04	1580	60276	63	13	32	213	19	78	16	5
BIS-04	1560	59883	56	13	33	217	20	80	17	4
CB-050a	1556	58582	58	13	31	204	20	75	16	4
CB-050a	1544	58444	51	13	31	206	19	75	16	5
CB-051a	1489	56283	50	11	30	200	18	74	16	4

CB-051a	1802	68212	68	16	37	246	22	91	19	4
DEL-03	1697	64528	70	16	35	227	22	84	19	6
DEL-03	1604	60521	63	13	33	212	20	79	18	4
DEL-03	1639	62521	65	15	33	220	21	82	18	5
DEL-03	1575	60149	57	13	32	211	19	78	17	4
RRC-01	886	22406	37	13	48	142	45	179	21	5
RRC-01	915	23305	37	13	47	122	46	220	21	5
RRC-02	1580	63696	71	14	34	229	21	85	18	5
RRC-02	1625	65392	73	15	35	236	21	88	19	6
RRC-02	1556	62200	70	15	33	223	20	83	18	5
MGCT02-01	1502	57323	51	12	31	204	19	76	17	3
MGCT02-01	1531	58557	51	13	32	210	19	77	17	4
MGCT02-02	1663	62659	64	15	35	228	21	83	17	5
MGCT02-02	1536	58059	59	13	31	205	18	76	17	4
MGCT02-02	1514	57639	52	13	31	203	18	75	16	4
MGCT02-04	1618	61878	75	15	34	222	21	82	18	5

MGCT02-04	1629	61497	70	15	34	223	20	81	17	5
MGCT02-04	1613	61317	64	13	33	219	19	81	17	5
MGCT02-05	1521	58075	52	13	31	204	19	77	17	4
MGCT02-06	1572	59431	60	14	32	210	19	77	16	4
MGCT02-06	1615	61752	64	16	34	224	20	82	17	5
MGCT02-06	1522	57965	53	13	31	205	19	75	16	4
MGCT02-06	1572	59902	56	13	32	213	20	79	17	4
MGCT02-07	1691	64238	67	14	35	227	21	84	18	6
MGCT02-07	1509	56944	58	13	31	200	19	76	16	3

Table S4 Trace elements measured by ED-XRF on archaeological artefacts.

Elt	Na <sub>2</sub> O	MgO	SiO <sub>2</sub>	Al <sub>2</sub> O <sub>3</sub>	K <sub>2</sub> O	CaO	FeO
EPMA analysis, from this work (ObsPR, Volc.Tuf, MGCT02-6 and BIS-03) and Rochette et al. 2021 (Belizite)							
Mean ObsPR	<b>4,9</b>	<b>0,1</b>	<b>76,4</b>	<b>11,5</b>	<b>4,8</b>	<b>0,1</b>	<b>2,2</b>
Min ObsPR	4,8	0,1	75,6	11,5	4,8	0,1	2,1
Max ObsPR	5,0	0,1	76,9	11,6	4,9	0,1	2,2
Mean Volc.Tuf	<b>4,2</b>	<b>0,1</b>	<b>78,0</b>	<b>12,6</b>	<b>2,2</b>	<b>1,5</b>	<b>1,8</b>
Min Volc.Tuf	4,1	0,1	77,3	12,4	2,2	1,5	1,7
Max Volc.Tuf	4,3	0,2	78,6	12,7	2,3	1,6	1,9
Mean MGCT02-6	<b>3,4</b>	<b>2,7</b>	<b>61,7</b>	<b>16,9</b>	<b>1,3</b>	<b>6,9</b>	<b>5,5</b>
Min MGCT02-6	3,2	2,6	61,5	16,9	1,2	6,7	5,4
Max MGCT02-6	3,5	2,7	62,1	17,0	1,3	7,1	5,8
Mean Bis-03	<b>3,5</b>	<b>2,7</b>	<b>62,0</b>	<b>17,0</b>	<b>1,3</b>	<b>6,7</b>	<b>5,4</b>
Min Bis-03	3,4	2,6	61,7	16,8	1,3	6,6	5,3
Max Bis-03	3,6	2,7	62,3	17,2	1,3	6,9	5,5
Mean Belizite	<b>3,6</b>	<b>1,8</b>	<b>62</b>	<b>17,2</b>	<b>2</b>	<b>4,7</b>	<b>6,4</b>
Min Belizite	2,7	1,5	60,3	16,1	1,7	4	5,5
Max Belizite	4,2	2,1	63,3	17,9	2,4	5,4	7,4
% variability (1-min/max)x100							
MGCT02-6	7,46	4,28	0,99	0,91	6,73	5,24	6,69
Bis-03	4,51	1,73	0,93	2,05	1,77	3,51	3,15
MGCT02-6+Bis-03	9,85	4,28	1,31	2,05	6,73	6,42	7,92
Belizites <sub>a</sub>	37,3	25,4	4,6	10,1	28,8	26,6	25,3
Belizites <sub>b</sub>	15,6	13	1,2	3,4	6,8	5,8	9,6
Belizites <sub>c</sub>	23,3	18,1	2,3	6,1	9,1	9,7	20,6
Ivoirites	36,9	32,8	3,3	7,6	17,9	55,9	11,3
Australasites	60,3	83,5	18,7	49,7	52,3	81,1	58,6
Moldavites	–	58,8	12	47	41,5	76	69,1
Bediasites-georgiites	45,7	–	14	46	36,3	–	68,2

763

764 Table S5 Major element concentrations and compositional variability of vitreous rocks analysed in this study and  
765 tektites from different strewn fields, particularly belizites. According to Rochette et al. (2021, Table 1).