



HAL
open science

**Providing fuel, building materials and food for gold
exploitation in the Eastern Desert, Egypt:
Multidisciplinary dataset of the Ptolemaic site of Samut
North (late 4th c. BCE)**

Charlène Bouchaud, Jean-Bernard Huchet, Thomas Faucher, Bérangère
Redon, Camille Noûs

► **To cite this version:**

Charlène Bouchaud, Jean-Bernard Huchet, Thomas Faucher, Bérangère Redon, Camille Noûs. Providing fuel, building materials and food for gold exploitation in the Eastern Desert, Egypt: Multidisciplinary dataset of the Ptolemaic site of Samut North (late 4th c. BCE). *Journal of Archaeological Science: Reports*, 2021, 35, pp.102729. 10.1016/j.jasrep.2020.102729 . mnhn-03215881

HAL Id: mnhn-03215881

<https://mnhn.hal.science/mnhn-03215881>

Submitted on 3 May 2021

HAL is a multi-disciplinary open access archive for the deposit and dissemination of scientific research documents, whether they are published or not. The documents may come from teaching and research institutions in France or abroad, or from public or private research centers.

L'archive ouverte pluridisciplinaire **HAL**, est destinée au dépôt et à la diffusion de documents scientifiques de niveau recherche, publiés ou non, émanant des établissements d'enseignement et de recherche français ou étrangers, des laboratoires publics ou privés.

***Providing fuel, building materials and food for gold exploitation in the Eastern Desert, Egypt:
Multidisciplinary dataset of the Ptolemaic site of Samut North (late 4th c. BCE)***

Charlène Bouchaud¹, Jean-Bernard Huchet¹, Thomas Faucher², Bérangère Redon³, Camille Noûs⁴

¹ Archéozoologie, Archéobotanique, Sociétés, Pratiques, Environnements (AASPE), Muséum national d'histoire naturelle, CNRS – Paris

² IRAMAT/CRP2A, CNRS – Bordeaux-Montaigne University

³ HiSoMa, CNRS – Lyon

⁴ Cogitamus – Paris

Abstract

Egypt's Eastern Desert, located between the Nile and the Red Sea, is one of the most arid regions of the world, where organic remains are particularly well-preserved. Archaeobotanical, archaeoentomological and textual data from the excavation of the gold mining site in Samut North, occupied at the beginning of the Ptolemaic period (late 4th c. BCE) provides unique opportunity to explore how people managed their need for fuel, wood and food at a period not currently well documented. Acacia (*Acacia* sp.) was the most important fuel, used for all artisanal and domestic heating activities. Other fuel resources (twigs, shrubs, maybe coprolites) were used sporadically, and are only associated with domestic contexts (cooking, heating, lighting, etc). Wood timber and wooden objects were made of *Leptadenia pyrotechnica* (Forssk.) Decne. 1838, acacia, caper (cf. *Capparis decidua* (Forssk.) Edgew.), tamarisk (*Tamarix* sp.) and coniferous (*Cupressus/Juniperus*) woods. Food products show little diversity: barley (*Hordeum vulgare* L. 1753), free-threshing wheat (*Triticum* cf. *turgidum* subsp. *durum/turgidum*) and lentils (*Lens culinaris* Medik. 1787). Several insects, some of them attested for the first time in an archaeological context, were common woodborer or crop pests. Plants used for fuel and woodworking are mostly of local provenance and charcoal fuel was produced locally, showing a good knowledge of desert resources. The majority of food remains came from the Nile Valley or from the oases of the Western Desert, with a limited supply of local wild desert fruits and seeds. This analysis offers an original dataset for a poorly documented though critical period, at the very beginning of the Ptolemaic period, and reveals an elaborate economic system with local supply networks and imported products, mostly aimed at essential needs.

Introduction

Egypt's Eastern Desert, located between the Nile and the Red Sea, is one of the most arid regions of the world, with important thermal amplitudes (Barron and Hume, 1902). Vegetation is sparse, except in some well-watered temporary watercourses (*wadis*) or in the mountains close to the Red Sea (Andersen, 2012). The region is mainly occupied by pastoral tribes and has seen neither permanent agriculture nor permanent occupation during the last 10,000 years. However, it has been visited, crossed and exploited since Predynastic times

because of its strategic position and its natural mineral resources, ranging from gold, copper and emeralds to high quality stones (Barnard and Duistermaat, 2012). While the overall pattern of human occupation in the Egyptian Eastern Desert seems clear, the Roman and Late Roman periods (1st–5th c. CE) are by far the best documented through archaeological studies (Cuvigny, 2011; Peacock and Blue, 2006; Peacock and Maxfield, 2007), including archaeobotanical works focusing on the acquisition and trade of food and wood (Cappers, 2006; Tengberg, 2011; Van der Veen, 2011, 2001; Van der Veen and Tabinor, 2007; Vermeeren, 2000, 1999, 1998). In comparison, the Ptolemaic period, from the end of the 4th c. to the end of the 1st c. BCE, has received little attention – most of the available data comes from textual studies, with none of the known 60 Ptolemaic sites being excavated until 2013, aside from the harbours of Berenike and Myos Hormos (Figure 1). This period, however, is extremely important, as it was during this time that the Graeco-Macedonian dynasty massively invested in the area, equipping roads with way stations, wells, watch towers and activating/reactivating dozens of gold mines (Redon, 2018, 2016). Samut North is one of these key gold mining sites, occupied at the very beginning of the Greek domination of Egypt. Archaeological campaigns conducted between 2013 and 2015 by the *Mission archéologique française du désert Oriental* (MAFDO), under the direction of B. Redon and co-direction of Th. Faucher, provide new data on the organization of mining works and the miners' daily life. Due to desert climatic conditions, the specificity of the mining work and the difficulties of the water supply obtaining fuel was key. In addition, edible plants could not be cultivated locally in large enough quantities and the use of local plant resources required knowledge of the desert. Food, fuel and building activities were therefore constant challenges which we explore through archaeobotanical, archaeoentomological and textual sources.

The Ptolemaic Site of Samut North

The mining district of Samut is located in the south-centre of the Eastern Desert, in a region rich in gold resources that have been exploited since the Predynastic times (Figure 1). Samut North (E 33°54'18", N 24°48'35") is located within the mountains, close to an auriferous vein that was exploited through open-air pits and small galleries (Figure 2). Excavations revealed several zones of ore crushing as well as two huge mills for grinding. After grinding, the quartz flour was washed and the gold was smelted. No traces of gold washing or melting process (except one testing furnace) was found, indicating that this took place in the Nile Valley. A nearby structure (Building 1) hosted the command, the troop and some of the miners. All the rooms of Building 1 were excavated, except those destroyed by recent mining work. Almost all yielded artefacts evidencing several room's function: a kitchen (Room 116), storerooms (117, 120–122, 135, 137, the last being full of charcoal), living quarters (north wings), dormitories (129, 132 and maybe 138) were recognised (Figure 2). Externally, one forge (402–403) was presumably dedicated to producing and repairing iron mining tools, and one furnace (152) may have been sporadically used for melting gold and refining tests. Analysis of the pottery and the few texts found on the site, mainly *tituli picti*, i.e. inscriptions on vases, that record the name of the addressee, the contents of the jars, or their quantity, demonstrates

that the occupation of Samut North dates back to the last quarter of the 4th c. BCE, probably around 310 BCE, and was short and seasonal (For more details on the site, see Redon and Faucher, 2020).

Present climate and vegetation

Egypt's Eastern Desert has a hot desert climate (Köppen climate classification *BWh*), with average rainfall of around 0-5 millimetres and extreme heat during the summer months. These conditions began some 6,000 years ago, as shown by paleoclimatic studies in the Red Sea mountains (Butzer, 1999; Moeyersons et al., 1999), as well as in the wider north-eastern African region (Hoelzmann et al., 2004; Kuper and Kröpelin, 2006).

Trees, shrubs and herbaceous plants are absent today in Samut North and in the immediate area, partly because of current intense mining works. Some isolated acacia trees (*Acacia ehrenbergiana* Hayne, 1827, *A. tortilis* (Forssk.) Hayne (1827)), overexploited for fuel and grazing, grow a few miles away, along with bushes of *Zilla spinosa* (L.) Prantl, 1898. *Wadis*, located further afield, host greater biodiversity, with gallery forests composed of acacia and shrubs, and herbs, such as *Artemisia Judaica* L., *Pulicaria undulata* (L.) C.A.Mey., 1831, *Forskholea tenacissima* L., *Fagonia* spp., *Farsetia longisiliqua* Decne., *Morettia philaeana* (Delile) DC., at a lower layer (Figure 3).

Materials and Methods

Archaeobotanical data

Samples selection and processing

Soil and hand-picked plant material were randomly sampled from different excavated areas in Samut North, namely Building 1, Forge 402–403 and Furnace 152 (Figure 2), corresponding to various occupation and destruction layers (see details Table 1).

For time and logistic reasons, only small volumes of sediment (0.15 to 3 litres) were sampled. In total, 21 soil samples, representing 16 loci and 33.15 litres of sediment were dry-sieved with coarse (2 mm) and fine (0.4 mm) sieves. All fine fractions from Room 116 (six samples) were manually floated. The dry-sieved or floated fractions were sorted by eye and under a stereoscopic microscope to extract seed, fruit, chaff elements, charcoal and non-plant remains, such as animal droppings, insect, microfauna, artefacts, etc. (Table 1). All the soil samples contained plant remains. Fourteen contained wood charcoal (13 samples studied) and eight samples had charred and uncharred seeds and fruits. Coprolites were present in five samples and insect remains in three. Twenty-nine hand-picked samples, corresponding to 28 loci, included twigs and processed wooden elements, as well as fragments of a wooden door and a bowl (Figure 4). Almost all were studied (27 samples out of 29).

Identification and counting

Identification was conducted at the materials research laboratory of the archaeometrical centre at the IFAO (*Institut français d'archéologie orientale*). Wood charcoal fragments and desiccated wood were identified by anatomical criteria using a reflected light microscope at

50x to 500x magnification. Archaeological specimens were compared to reference atlases (Fahn et al. 1986; Neumann et al., 2001) and a modern wood and charred wood reference collection. Fruits, seeds and other non-woody plant remains were identified by morphological criteria under a stereoscopic microscope (up to 60x magnification) using reference seed atlases (Cappers and Neef, 2012; Neef et al., 2012) and botanical reference collections. Egyptian flora were used for complete the plant descriptions and phytogeographical data (Boulos, 2005, 2002, 2000, 1999). Taxonomical nomenclature follows that proposed by APG III and IV (Chase et al., 2016; The Angiosperm phylogeny group, 2009) for hardwood and Boulos's Egyptian flora for softwood (Boulos, 1999).

Common indices were used to evaluate the charcoal assemblages, namely relative abundance, ubiquity rate, as well as ecological and economic/functional criteria. Due to the limited study time, only 50 charcoal fragments were analysed per sample, with the exception of two samples taken from the forge (403.06_Bot1, 403.06_Bot2; 11 and 10 fragments, respectively, analysed) (Table 2). The qualitative representativeness of the data was explored through taxonomic saturation curves. Five samples are stabilized, while five others are not (Supplementary data 1). Therefore, we cannot exclude a problem of representativeness, which should lead us to be cautious when interpreting the results. An initial dendro-anthracological approach on acacia wood (*Acacia* sp.) was carried out by recording the morpho-anatomical features cited in the literature (Allué et al., 2009; Dufraisse et al., 2017; Théry-Parisot et al., 2010), which inform on the growth conditions and physiological state of the wood before, during and after carbonization. The relevance of several morpho-anatomical criteria were questioned, such as radial cracks to highlight green wood burning, microbiological and entomological traces as indicator of seasoned wood or vitrified structure to show high temperature (Marguerie and Hunot, 2007; McParland et al., 2010; Moskal-del Hoyo et al., 2010; Théry-Parisot and Henry, 2012). Previous studies on Roman sites in the Egyptian Eastern Desert have highlighted charcoal making based on low taxonomic variability, the charcoal quality when broken, i.e resistant (hard) or not (soft), the important size of fragments and the absence of twigs (Van der Veen, 2011, pp. 221–223, 2001, pp. 203–205; Van der Veen and Tabinor, 2007, pp. 110–111; Vermeeren, 2000, 1999). In this study, the following criteria were recorded: maximal length, presence of bark and heartwood, tyloses (cell proliferation or gummy secretion), fungi hyphae, insect damage, radial cracks, vitrification features, reaction wood and the hardness of charcoal, although this last measure is highly subjective. The evaluation of diameters was carried out only on fragments with bark and heartwood (Table 3, Supplementary data 2).

All processed desiccated wood (objects) were described and taxonomically identified. Desiccated twigs/branches were classified according to their appearance and diameter for each sample and only a selection of each category were analysed (Table 4). Measurements were made directly after the excavation. All the desiccated wood was fragmented, so lengths represent the minimal dimensions.

Seeds, fruits and other non-woody plants were classified by taxa, type of organs and ecological habitat or functional (type of use) groups. Counting was based on the total number of remains, comprising whole and fragmented elements and the estimated minimal number of items (MNI) (Table 5 and 6). These numbers and the ubiquity rate were used to discuss the results.

Archaeoentomological data

Insect remains came from locus 125.05, corresponding to an ashy occupation layer in Room 125, a distribution room leading to a chapel (126) and two storerooms (123-124). The locus also contained charred and desiccated plant remains. Two other contexts provided isolated insect fragments, but were not considered here. The dataset includes 43 well-preserved insect fragments recovered from both coarse and fine sieves. Identification was made according to anatomical criteria and comparison with a modern reference collection. Counting was based on the number of fragments, the number of determined fragments, as well as the minimal number of items, which was carried out by counting single pieces (head, thorax, abdomen, etc) or side components (elytra, legs).

Results

Charcoal

Taxonomical diversity

Wood charcoal fragments constituted the majority of plant remains found at Samut North. The charcoal analysis was based on 13 samples (12 loci) and 575 wood charcoal fragments (Table 2). They were well preserved and few remain undetermined (3% of total amount of studied charcoal). As indicated by the taxonomic saturation curves, we do not have a complete representation of the potential plant diversity (Supplementary data 1). Four taxa were recognised. *Acacia* sp. is present in all samples (547 fragments, 95% of the total number of studied fragments, including five cf. *Acacia* sp.). Taxonomical identification of acacia species is virtually impossible based on anatomical observations only (Neumann et al., 2001, p. 286). However, all fragments have axial parenchyma aliform and confluent to a broadly banded transversal section and broad homocellular rays from 1 to 8(10) cells wide in longitudinal tangential section (Figure 5). We, therefore, identified them as one group, *ehrenbergiana/etbaica/tortilis*, as these are the main acacia tree or shrubs growing locally. Common acacia of the Egyptian Eastern Desert corresponds to trees up to several meters high, namely *Acacia tortilis* subsp. *raddiana* (Savi) Brenan and *A. tortilis* subsp. *tortilis* (Forssk.) Hayne, and shrubby species, including *A. ehrenbergiana* and *A. etbaica* Schweinf. (Mahmoud, 2010, pp. 27–30). The uses and properties of these acacias are manifold. Hard and dense wood is a popular fuel and is sometimes used in construction; the leaves, twigs, bark and fruits are an important source of fodder (especially *A. tortilis* subsp. *tortilis* leaves), the gum of *A. tortilis* subsp. *raddiana* is used for food and medicine purposes, bark is used as tannin and the thorns are used to make traps (Hobbs, 1989, pp. 43, 52, 98–101; Mahmoud, 2010, pp. 27–30). Acacia trees are thus widely promoted in semi-arid and arid regions (Fagg and Stewart, 1994; Le

Floc'h and Grouzis, 2003; Wickens, 1995). Nile acacia (*Vachellia nilotica* (L.) P.J.H.Hurter & Mabb., 2008) growing along the Nile or in shallow water table areas (Boulos, 1999, p. 368) is the only species to have distinctive anatomical criteria and it is not identified in the assemblage.

Three fragments of *Leptadenia pyrotechnica* (Forssk.) Decne., 1838 were found in two loci. This shrub, up to three meters high, does not grow in or around the Samut District today, but it is frequently seen in the Southern Sahara and Northern Sahel. It is important fodder for camels and is also commonly used as fuel. Seeds and young stems are sometimes eaten by local populations and the fibres can be used for making clothes (Hobbs, 1989, pp. 53, 101).

Three fragments of *Tamarix* sp. were present in three loci. Six distinct species occur in Egypt, which cannot be differentiated through anatomical observation (Neumann et al., 2001, p. 415). The two commonest species are a tree, 3 to 12 meters high, *T. aphylla* (L.) Karst., 1882 and a shrub, *T. nilotica* Ehrenb. ex Bunge, 1852. Both grow in the desert and the Nile Valley (Boulos, 2000, pp. 126–129). Tamarisk is commonly used by Bedouin populations as fuel and timber (Mahmoud, 2010, p. 128).

Finally, one fragment of a possible caper tree, cf. *Capparis decidua* (Forssk.) Edgew., was identified. This tree or shrub, up to 8 meters high, grows in *wadis* and sandy and alluvial plains in the Egyptian Desert area (Boulos, 1999, p. 171), although it is no longer present in or around the Samut District. Its hard, compact, imputrescible and termite-resistant wood is used as fuel and for making beams and small tools. The fruits, flowers and flower buds are edible and have medical properties (Mahla et al., 2012; Mahmoud, 2010, p. 49).

Dendro-anthracological description

The maximal length of the charcoal fragments ranged from 2 to 55 mm (Table 3). With the exception of the two samples from locus 403.06 that have small fragments (mean: 5 mm), all the samples showed similar means, from 9 to 13 mm. Fragments with bark (N=32) or heartwood (N=26) were common but in low quantity; tyloses were unevenly distributed, from 2% (116.17_Bot1) to 80% (117.05_Bot1) of the total amount of acacia fragments. Fungi hyphae were rarely noticed, with sample 137.02_Bot1 having the highest proportion (36%). However, microscopic fungi hyphae are sometimes difficult to observe with an incident light microscope and some observations may be missing here. Radial cracks were observed in almost all the samples, with irregular distribution. All the samples had vitrification elements, from 19% (116.17_Bot1) to 88% (117.05_Bot1). Six samples had twigs with diameters ranging from 1 to 10 mm. Branches (diameter > 10 mm) were recognised in three samples from Room 116. We were not able to measure the other diameters precisely but most of the fragments had parallel rays that indicate bigger diameters. However, there is no way of knowing if these elements correspond to branches or trunks. Charcoal consistency when breaking was more generally soft (75% of the total amount) than hard. No entomological or reaction wood was observed.

Wood

Wood elements mostly included twig branches, as well as beams, planks, a door and a bowl. In total, 27 samples, some of them including several of the above were analysed. Five taxa were identified: *Leptadenia pyrotechnica* (16 items), *Acacia ehrenbergiana/etbaica/tortilis* type (6), *Cupressus/Juniperus* (cypress/juniper, 3), *Tamarix* sp. (2) and cf. *Capparis decidua* (2). The only new taxa when compared to the charcoal assemblage was cypress/juniper.

Branches

The studied twigs and branches contained 173 fragmented elements from destruction and accumulation layers (Table 4), of which most (121 fragments) corresponded to *Leptadenia pyrotechnica*. They were classified according to their size, including small–medium diameter [1–13 mm] and large calibres [15–25 mm] (Figure 4A). Branches of acacia were noted in two samples.

Beams and planks

Nine beam and plank items were uncovered from Building 1 (Table 4). These terms refer to their calibre and cross-section shape, not to their function; thus, a beam designates any element with a circular or square cross-section greater than 2.5 cm side or diameter. A plank is wider than it is thick (Chabal, 2014, p. 118). All lengths follow fibre direction. There were six beams, including three acacia rectangular beams. Two beams had similar dimensions (119.02_Bot1 and 122.05_Bot1). The large width (140 mm) suggests that they were cut from the longitudinal section of an acacia trunk. Two circular beams are possibly made of caper tree (Figure 4B) and *Leptadenia pyrotechnica*. Three planks uncovered in three different *loci* were of similar thickness (10–15 mm) and were of coniferous wood. All have rays of 1-8 cells high observed in longitudinal transversal section and may correspond to either cypress branchwood or juniper stemwood (Fahn et al. 1986, p. 56). Neither grow in the desert or the Nile Valley, except on some modern plantations. Phoenician juniper (*Juniperus phoenicea* L.) naturally grows in the Sinai Mountains and cypress (*Cupressus sempervirens* L.) grows all around the Mediterranean belt (Boulos, 1999, p. 10).

Bark elements

Six bark fragments, sometimes significant in size, were present. It was not possible to positively identify them because of the lack of diagnostic tools and criteria, but acacia is the most plausible proposal based on simple morphological comparison. They may have been brought involuntary to the site with branches and trunk elements, directly used as caulk, as fodder or for tanning skins (Hobbs, 1989, p. 52).

Door in Room 125.03

A wooden door was uncovered in the south-west corner of Room 125 (Figure 4C). Despite its exceptional appearance, it was very badly preserved and crumbled at the slightest contact. It measures 1.60 m high and 0.70 m wide and is constituted of three vertical panels on which two uprights and three crosspieces are studded with nails. The size of the iron nails indicates a thickness of at least 6 cm. The upper and lower pivots are not visible. The lock case, if it existed, was on the side embedded in the sediment. Two wooden fragments of the right panel and intermediate crosspiece were analysed and both correspond to acacia wood. Furthermore, a free-standing well-preserved quadrangular element uncovered in the

sediment and possibly corresponding to the door was also made of acacia wood. The dimensions of the panels, uprights and crosspieces imply the use of large acacia trunks, such as those of *Acacia tortilis* subsp. *raddiana*. Doors are rarely found in Egyptian archaeological contexts. The Greco-Roman examples from Tebtunis (Gallazzi and Hadji-Minaglou, 2000, p. 142, fig. 46) and Karanis (Gazda, 2004, p. 24, fig. 57) have been differently crafted and are of variable quality; the species have not yet been identified.

Bowl Po202

The almost complete bowl from 121.07 is 85 mm high and 110 mm in diameter (Figure 4D). It is made of tamarisk wood and was realised with a lathe. The flat bottom is covered with a black/brown substance (not analysed). The drilling was probably done with scissors or a gouge and grooves are still visible on the inside surface. Tamarisk wood is commonly used for everyday objects, as at Tebtunis (Marchand, 2015).

Seeds, fruits and other non-woody plants

Nine samples (6 loci) from Building 1 contained 903 remains of fruits, seeds and other non-woody plant remains, including 777 charred items and 126 desiccated items (Table 5). Five cultivated plants and at least five wild taxa were represented. The fragmentation rate (26%) and the number of taxa (7) was lower among charred items than desiccated ones (59% of fragmentation, 8 taxa).

Cereals

Hulled barley (*Hordeum vulgare* L. 1753) grains and chaff represent the majority of cultivated plants of MNI (charred 44 grains and 20 rachis fragments, desiccated 26 grains and 20 rachis fragments) and ubiquity (6 loci). All desiccated barley grains had their lemma and palea (Figure 6A) but the charred ones did not, probably because of the charring rather than the dehusking process. Indeed, dehusking is generally not done on the whole grains but occurs after grinding by winnowing the obtained product. For animals, florets are often slit to make them easier to digest (Cappers et al., 2016, p. 1320).

Seven desiccated whole grains of free-threshing wheat were identified (Figure 6B). It was not possible to identify the exact species based only on the morphology of the grain. However, these grains likely correspond to tetraploid free-threshing wheat (*Triticum turgidum* subsp. *durum/polanicum/turgidum*) which has already been identified on contemporary sites in Egypt (Agut-Labordère et al., in press; Murray, 2000a, p. 513). The cultivation of bread wheat (*Triticum aestivum* L. subsp. *aestivum*) is not attested in Egypt before the modern period (Cappers, 2016).

Some desiccated and charred remains of grains, rachis segments and straw of undetermined cereals were identified.

Pulses

Lentil, *Lens culinaris* Medik. 1787, was the only pulse found at Samut North. The seeds were mainly present in and around a lead plate (123.02, Po100, Figure 7). The ten perfectly preserved lentils on the plate and their location leaves no doubt as to their function as food. Lentils have to be soaked or leached, then rinsed and boiled to soften, detoxify and make

them digestible. Simple experimentations showed that lentils tend to swell and crack when they are cooking. However, most of the lentils here have complete testa, showing that they are either raw or very lightly cooked, meaning they could either represent the remains of food that was about to be cooked, or uneaten, uncooked scraps of an already prepared dish.

Other plants

Sample 117.05_Bot1 contained one charred black mustard seed (*Brassica cf. nigra* (L.) W.D.J. Koch 1833). This plant is an important ingredient in mustard and is used in traditional medicine in Egypt for its digestive, diuretic and stimulating properties (Boulos, 1999, pp. 211–212). It is also a common arable weed in winter crops (Boulos and El-Hadidi, 1994); the seed, therefore, may have arrived at Samut North as a contaminant (Van der Veen, 2011, p. 167). A concentration of charred fruit (*Zilla spinosa*) was present in two ovens from the kitchen (Room 116). Other taxa remains include charred acacia seeds and desiccated acacia leaves, desiccated and charred colocynth seeds (*Citrullus colocynthis* (L.) Schrad., 1838) and *Medicago* sp. and desiccated seeds of *Panicum turgidum* Forssk., 1775 and cf. *Trifolium* sp. Aside from acacia, which is a tree species, all of the wild plants were common herbaceous desert plants. Their presence could result from wind dispersal or show different uses: fodder, food, medicine, fuel, etc. *Panicum turgidum* seeds are one of the main fodder resources encountered in the desert, and they can also be cooked (Mahmoud, 2010, p. 104). The presence of these seeds, therefore, can indicate both the combustible use of dried fruit and the consumption of seeds by animals (especially donkeys) or, if roasted, by humans. The oil extracted from roasted seeds could also have been used as medicine or tannin (Hobbs, 1989, pp. 53, 93; Osborne, 1968, p. 167; Zahran and Willis, 2009, p. 87).

Among undetermined plants, the category called “half-moon” refers to charred curved elements from 1 to 5 mm in length, with an irregular surface or cross ribs on the convex part, sometimes tied in pairs (Figure 6). Similar remains were also found at Wadi Kubbaniya (Paleolithic, Upper Egypt) and interpreted as bird droppings, presumably from wild ducks of the Anserinae or Anatinae family (Hillman et al., 1989, fig. 7.3). Krystyna Wasylikova noted the same hypothesis at Nbata Playa (Neolithic, Egyptian Western Desert) (Wasylikowa et al., 1964, p. 139, pl. 26); however, when compared with modern bird droppings, these identifications are not convincing. “Half-moon” elements are always charred and frequently associated with desert sites (Figure 6). One element from Samut North was found adhering to acacia charcoal, but a precise identification and nature are yet to be determined.

Coprolites

There were at least two types of coprolites. The first one corresponds to ovicaprids coprolites, present in two loci. These testify to the presence of animals in or around Samut North and could explain the presence of possible grazed and undigested plants in the same contexts, such as cf. *Trifolium* sp., *Medicago* sp. or *Panicum turgidum*. Charred elements probably highlight their use as fuel (Charles, 1998; Marinova et al., 2013; Miller, 1984). The second type includes rodent droppings that were uncovered in huge quantities in sample 132.08_Bot1.

These remains evidence the presence of rodents in Building 1 during its occupation or shortly after its abandonment.

Insects

The archaeoentomological analysis, based on 43 insect fragments from locus 125.05, showed a wide diversity with 11 species of beetles (Coleoptera) belonging to eight families. The study of desiccated sclerites highlights the presence of two main ecological groups: woodborers and crop pests.

Woodborers insects

Three woodborer species belonging to Bostrichidae, all dependent on acacia for the Saharan region (Mateu, 1975), were identified at Samut North: *Enneadesmus forficula* Fairmaire, 1883, *Calopertha truncatula* Ancy, 1881, and *Acantholyctus cornifrons* (Lesne, 1898). All these species are attested for the first time in an archaeological context.

E. forficula (Figure 8) is a common species of the Saharo-Sahelian region which lives at the expense of several acacia species (Beeson and Bhatia, 1937; Halperin and Damoiseau, 1980; Lesne, 1924), notably *Acacia tortilis* (Lesne, 1901, p. 608). *C. truncatula* is smaller (3–4.5 mm, Figure 8) and digs deep galleries in acacia sapwood to lay its eggs, specifically in *A. tortilis* subsp. *raddiana*, *A. scorpioides*, *A. flava* and *Fadherbia albida* (Lesne, 1924; Mateu, 1975). It has been observed on the dead branches of *A. seyal* and *A. tortilis* subsp. *raddiana* (Español, 1947).

A. cornifrons belongs to the Lyctinae subfamily (“powderpost beetles”), which are among the most harmful woodworm species. This insect has been observed on dead and living *Acacia tortilis* (Alfieri, 1976; Halperin and Geis, 1999).

Crop pests

Four crop pests belonging both to primary and secondary species were identified within the archaeoentomological assemblage: *Sitophilus granarius* (L., 1758) (Dryophthoridae), *Rhyzopertha dominica* (F., 1792) (Bostrichidae), *Oryzaephilus surinamensis* (L., 1758) (Silvanidae), and *Stegobium paniceum* (L., 1758) (Anobiidae) (Figure 9). Primary pests grow inside the grain and feed on nutrient grain reserves; secondary pests live off the debris and grain already damaged by the primary pests.

The grain weevil (*S. granarius*, MNI=1) is the most famous and harmful primary pest in the world. Although it shows a clear predilection for wheat, it attacks a wide variety of cereals, such as barley, sorghum (*Sorghum bicolor*), oat (*Avena sativa*) and also some pulses such as chickpea (*Cicer arietinum*). The lesser grain borer (*R. dominica*, MNI=1) is also a primary pest (Edde, 2012). It often cohabits with the grain weevil and infects wheat, barley, along with other cereals and spices. The sawtoothed grain beetle (*O. surinamensis*, MNI=1) is a secondary pest of small size (2.5–3.5 mm) which can infest a large diversity of plant food, such as wheat, barley, flax (*Linum usitatissimum*), flour and dried fruits, such as dates (*Phoenix dactylifera*), etc. The bread beetle (*S. paniceum*, MNI=1 larva) is one of the most damaging pests being

extremely polyphagous, resistant and indistinctly degrading wheat grains, semolina, porridge, couscous, coffee (Lepesme, 1944).

All of these crop pest beetles have been recorded in different Egyptian archaeological contexts (Alfieri, 1976, p. 188; Leek, 1973; Panagiotakopulu, 2001, 1998; Solomon, 1965; Zacher, 1937)

Other insects

Teretrius cf. *pulex* Fairmaire, 1877 (Histeridae) (MNI=11), like other *Teretrius* representatives, is a predator living within Bostrichidae galleries, especially those of *E. forficula* and *A. cornifrons* where it preys on the eggs and larvae of the latter (Gomy, 2007). Dessicated larval remains attributed to the genus *Dermestes* L., 1758 (Dermestidae), a genus grouping species living on carrion in various stages of post-mortem decomposition figured among the remains. These carrion beetles are often found associated with mummies (Alluaud, 1908; Hope, 1836; Huchet, 2016, 2010, 1995). Finally, *Mesostenopa picea* (Kraatz, 1865) (Tenebrionidae) (MNI=1), as with the other members of the family, figures among the main representative insect of desert environments. Its presence does not provide any specific information since it is extremely polyphagous. In archaeological contexts, *M. picea* is recorded both in Egyptian cereal stocks and in association with mummies (Attia and Kamel, 1965; Curry, 1979; David, 1978).

Discussion

Wood management in desert environments

Plants as witnesses of artisanal and domestic activities

There was no archaeological trace of accidental fire, so the presence of charcoal fragments probably results from their use as daily fuel. The specific context of Samut North, mainly defined through mining and metallurgical activities that require *a priori* large amount of fuel, combined with the desert environment offering *a priori* limited resources, should have impacted fuel management. Gold melting and refining probably did not take place on site, or only occasionally (such as in Furnace 152, see introduction). The presence of a forge, used to produce and repair iron tools, requires a controlled heating processes to reach and maintain temperatures above 1000°C. The charcoal stock from storeroom 137 (Figure 10) confirms the local use of charcoal fuel. In parallel, the use of green and seasoned wood must be considered, notably for domestic activities (i.e. cooking, heating, lighting), although we do not have any robust argument to confirm or discard this hypothesis. A charcoal study did not allow the differentiating of charcoal fuel from burnt wood. Moreover, the charcoal dataset might result from a mix of heating activities (Théry-Parisot et al., 2010). With the exception of specific contexts (i.e. charcoal stock 137.02 and Forge 403.06) the functional understanding of other charcoal assemblages is tricky.

Correspondence analysis (CA) was carried out in order to hierarchize relations between archaeological contexts (individuals) containing charcoal, seeds and fruit remains, and archaeobotanical/coprolites components (variables) (Figure 11, Supplementary data 3). Contextual structuring defines the two axes. On the one hand are clear artisanal contexts, (i.e.

charcoal storage room 137 and Forge 403), characterized by the absence of seeds, coprolites and similar dendro-anthracological criteria (hyphae and vitrification, see discussion and criticism in the following section). On the other hand, utility rooms, such as kitchen 116, storeroom 125 and guard room 130 are associated with the presence of seeds, coprolites, charred twigs and branches. In between, there are a bulk of contexts which cannot be assigned but tend to be related to the first group. The analysis shows how fuel resources strongly structure the archaeobotanical assemblages, by splitting contexts where charcoal fuel has been exclusively stored or used and contexts with more variable fuel resources.

Charcoal making in the desert

Charcoal from Room 137 (storeroom) had low taxonomic diversity (a single taxon, acacia) and no twigs or seeds. These observations are in line with Roman studies where the presence of charcoal fuel was assumed (Krzywinski, 2001, p. 346; Van der Veen, 2011, 2001; Van der Veen and Tabinor, 2007; Vermeeren, 2000, 1999, 1998), and considered fragment size, hardness criteria, presence of radial cracks and the *puffing effect* to emphasize its presence. The charcoal fragments from 137.02_Bot1 are no bigger or smaller than charcoal fragments from other contexts, showing that size, also subject to other constraints (Théry-Parisot et al., 2010), cannot be used as a diagnostic criteria like radial cracks (Théry-Parisot and Henry, 2012). Hardness and the *puffing effect* as indicators of high combustion temperature have never been scientifically tested, while numerous intrinsic (wood density, anatomy and state of preservation) and extrinsic (combustion quality, taphonomy) factors affect charcoal consistency.

The hypothesis based on archaeobotanical and textual sources during the Roman period indicates that Nile acacia charcoal was imported from the Nile Valley to supply stone quarries (Bouchaud et al., 2018; Van der Veen and Tabinor, 2007 O.Claud. I 21, O. Claud. IV 697, 742, 826, 850). In contrast, no Nile acacia was observed at Samut North, and charcoal fuel likely corresponds to local acacia species (*A. tortilis*, *A. ehrenbergiana*, *A. etbaica*). This is significant and show that the need for charcoal could be met using local species and that the situation is different from Roman times. Acacia is still the most favoured tree to make charcoal, probably because of its intrinsic properties (Andersen and Krzywinski, 2007a, 2007b; Durand et al., 2018) and availability. An acacia tree produces between 50 and 250 kg of charcoal depending on the species, its size, the cutting method and technique used (Belal et al., 2009; Le Floc'h and Grouzis, 2003; Le Houérou, 2002; Springuel and Mekki, 1994). Charcoal making is a common practice in the present Saharo-Sahelian region (Le Floc'h and Grouzis, 2003; Le Houérou, 2002, 1990) and is well documented for the Eastern Desert (Belal et al., 2009; Christensen, 2001, 1998; Hobbs, 1989; Krzywinski, 2001; Springuel and Mekki, 1994). During 19th–20th c., Bedouins produced acacia charcoal in a sustainable way by cutting branches instead of trunks and by using two different techniques: open burning or in a pit/kiln (more details in Christensen, 2001, pp. 112–114, 1998; Durand et al., 2018; Krzywinski, 2001, pp. 135–136) (compilation in Bouchaud, 2020). No charcoal burning platforms have been identified at Samut North; however, one can assume that the pit/kiln model may have been

used to ensure sufficient charcoal production for artisanal activities, as already suggested by Krzywinski (2001, pp. 138-139). This author also suggests the use of green wood. The correspondence analysis (Figure 11) shows that the samples associated with charcoal production have more fragments affected by bacteriological elements (hyphae fungi), that could indicate the use of seasoned or dead wood (Moskal-del Hoyo et al., 2010). However, we lack robust taphonomic and experimental works on acacia tree, as it has been done for other species (Henry and Théry-Parisot 2014; Vidal-Matutano et al. 2017) to know the original state of the wood gathered. Charcoal production needs a workforce, possibly ensured by the mine workers, and know-how. It must therefore have required the presence of charcoal burners coming from the Nile Valley, or exchanges (of know-how or trade) with local Bedouin populations.

Selection of ligneous plants

There is a clear distribution of ligneous plants according to their use, with acacia dominating as fuel. The presence of charred acacia seed and leaves suggests branch use, although the cutting of trunks for fuel cannot be excluded. *Acacia tortilis*, whose presence is confirmed by woodborer insects, could indicate large branches and trunks for its probable use as beams and the door. *Leptadenia pyrotechnica* is mainly used for its flexible branches and its trunk serves as a beam, while fuel use is sparsely recorded. Tamarisk and possibly caper trees are occasionally used as fuel and building material. The fruits of *Zilla spinosa* probably highlight the use of twigs as fuel which disappeared while charring. All these taxa are known for their high-fuel or building qualities (Belal et al., 2009; Hobbs, 1989) and likely grew in the area. The presence of cypress/juniper shows that wooden furniture partly come from Sinai or the Mediterranean region.

Building material

Leptadenia pyrotechnica twigs and branches have a singular horizontal arrangement within the destruction layers (Figure 12), showing that they were used for covering some if not all the rooms of Building 1, probably mixed with clay, as is the case elsewhere (Vandenbeusch, 2017). Leaflets, possibly of date palms, were uncovered in Room 125, as were bark fragments, indicating their possible use for roofing systems, like in some traditional Egyptian houses (Henein, 2001, pp. 42–43). The accumulation of *Leptadenia pyrotechnica* and acacia branches in dormitories (129.03, 129.05, 129.07, 132.13) indicate other uses. The high amount of acacia in one of the locus, while it is virtually absent from the branches of the destruction layers, suggests other purposes, such as fuel storage or fodder.

We can reasonably think that beams were used to support the roofing system made of branches and clay, according to a simple system of superimposition (Vandenbeusch, 2017, see type n°2 on Figure 10). The use of twigs, branches, trunks (for beams and planks) show a complete exploitation of local desert trees and shrubs.

Planks made of coniferous wood may indicate other potential uses or re-uses, in architecture, support or transport.

Food supply

Scarce and unvaried food products

Food products were mainly present in Room 123, 125 and 130, and secondarily in Rooms 116 and 117, which are all dedicated to food preparation, storage or consumption. Local agriculture is hardly conceivable due to extreme aridity, water scarcity and mine function; however, the vase inscriptions show that a variety of foodstuff – honey, cheese, wine, figs, cereals – was imported from the Nile Valley (Redon and Chaufray, 2020), about four days walk away. The archaeobotanical results complete this data and are in line with other Egyptian corpora. Barley and lentils are the most common eaten cereal and pulse in Egypt since Neolithic times (Cappers, 2016; Murray, 2000a, 2000b). The presence of free-threshing wheat matches with the general chronology of wheat in Egypt established through written and archaeobotanical sources (Agut-Labordère et al., in press; Cappers, 2016; Crawford, 1979; Préaux, 1939; Schnebel, 1925). The Ptolemaic period is a milestone during which tetraploid wheat increases and replaces emmer wheat (*T. turgidum* subsp. *dicoccon*), but, although this phenomenon is well known, chronology and geography still need to be specified. Wheat from Samut North provides new clues showing that free-threshing wheat was traded and consumed in the Eastern Desert from as early as at the late 4th c. BCE on a site managed and supplied by the royal administration. No fruits were found, although they were cultivated at the same time in the Nile Valley or Western Desert oases (Grüss, 1930; Newton et al., in press; Newton and Clapham, in press). Notably, there are no date palm stones, though they are generally well preserved in archaeological contexts. We assume, therefore, that date palm was not part of the general diet of the Samut North inhabitants. Among the Greek ostraca, there were two mentions of black fig, *Ficus carica* (ισχάδες μέλαινα, *O.Sam.* 4) and cress, *Lepidium sativum* (κάρδαμον, *O.Sam.* 8) showing that other uncommon products were consumed, at least occasionally (Redon and Chaufray, 2020). There is no direct evidence of desert wild plant consumption but the presence of several edible seeds, with medical properties, such as *Panicum turgidum* and *Citrullus colocynthis*, indicate that some local plants were used for purpose other than for fuel.

The number of food remains were surprisingly low in the domestic and culinary rooms, with bacteriological attacks, as well as insect pests and rodents most likely to blame. However, this cannot be the only argument since numerous other organic items, namely wooden building material, were found in almost all the rooms. We put forward two other reasons. First, the site generally yielded little material, showing that the occupation was short and seasonal (Redon et al., 2020). Secondly, inhabitants were mostly workers, probably prisoners, with access to little food diversity which was partly infested – primarily cereals and lentils, perhaps irregularly supplemented by meat, as shown by the remains of old slaughtered animals (camels, equids), and sheep, goat and pig bones (Leguilloux, 2020). The figs, cress, honey and cheese, mentioned in the few texts were surely exceptions, primarily given to those in charge of the mine and the miners, high-ranking soldiers and the administration.

Ritual food

The lead plate containing lentils was located in a sedimentary matrix (123.02) where uncharred lentils, whole and fragmented barley grains and one wheat grain were found. Broken barley florets could indicate the partial crushing with a mortar to make porridge or *fereek* (roasted and crushed grains). It is worthwhile noting that one amphora found in Room 110 contained broken cereal, *χόνδρος*, *O.Sam.* 6. This assemblage was discovered next to a votive mud foot and a mollusk operculum, two possible cultic objects in Room 123, near to a possible chapel (Room 126). We cannot exclude that the lead plate of lentils and cereals grains belonged to this votive set. Offering food was a common practice in Greco-Roman and Egyptian worlds, as shown through iconography (Barakat and Baum, 1992; Peters-Destéract, 2005, pp. 341–375), Greek sources (Pausanias, *Description of Greece* III.23.8) and archaeobotanical data in religious contexts (Megaloudi, 2005). The presence of raw food products, therefore, may mean that they were not dedicated to human consumption but were an offering to a divinity.

Conclusion

Different strategies were developed at Samut North to ensure fuel, woodworking and food needs were met. Acacia was the most important fuel used for all heating activities, and the production of charcoal was ensured by local workers or Bedouins and stored in Building 1. Other fuel resources (twigs, shrubs, maybe coprolites) were used sporadically, and are only associated with domestic contexts (cooking, heating, lighting, etc.). Roofs were composed of *Leptadenia pyrotechnica*, acacia and possible caper beams supporting branches (mainly of *Leptadenia pyrotechnica*) and clay. Other wooden elements were made from acacia, tamarisk and coniferous woods. Food products show little diversity, including barley, free-threshing wheat and lentils. Plant resources for fuel and woodworking are mostly of local, i.e. desert, provenance. The majority of food remains came from the Nile Valley or Western Desert oases, with a limited supply of local wild desert fruits and seeds. Only coniferous planks attest to the use or re-use of wood imported from the Sinai or the Mediterranean region. This model is far from the one observed during the Roman period (1st–3rd c. CE) in the Eastern Desert, which highlights more varied plant resources, of different origins, regardless of the site (Bouchaud et al., 2018; Van der Veen et al., 2018). Similar conclusions were reached from the analysis of the other artefacts, texts, pottery, and faunal remains, found at Samut North (Redon and Faucher, 2020) and from other recently excavated Ptolemaic sites (study in progress). This analysis offers an original dataset for a poorly documented though critical period, at the very beginning of the Ptolemaic period, and reveals an elaborate economic system with local supply networks and imported products, mostly aimed at essential needs. The presence of local plants show that the inhabitants had a good knowledge of desert resources and used them wisely, perhaps thanks to exchanges of knowledge or materials with local Bedouin populations.

Acknowledgement

MAFDO thanks the IFAO, the French Ministry of Foreign Affairs and the CNRS for their financial and logistic support.

We warmly thank the SCA inspector M. Abdelrahim Mahmoud Ahmed and Dr Ashraf and Dr Dalia El Meleigy for their help transferring the samples to the IFAO, with authorization from Ministry of Antiquities. We also thank Anita Quiles and Nadine Mounir for their help and support at the archaeometrical center of IFAO (Institut français d'archéologie orientale).

J.B.H thanks his entomologist colleagues Yves Gomy (*Histeridae*) and Julio Ferrer (*Tenebrionidae*) for confirming identifications, as well as François Génier (Canadian Museum of Nature, Ottawa, Ontario, Canada) for authorizing the reproduction of modern specimen photographs of *Enneadesmus forficula* and *Calopertha truncatula*.

Finally, we thank the two reviewers for their useful comments improving the paper.

Reference

- Agut-Labordère, D., Bouchaud, C., Lerouxel, F., Newton, C., in press. Des plantes et des hommes : le passage de l'amidonniér au blé dur en Egypte dans la deuxième moitié du 1er millénaire avant J.-C., in: Zurbach, J., Lerouxel, F. (Eds.), *Le Changement Dans Les Économies Antiques*. Ausonius, Bordeaux.
- Alfieri, A., 1976. The Coleoptera of Egypt, *Mémoires de la société entomologique d'Égypte*. Atlas Press, Cairo.
- Alluaud, C., 1908. Note sur les coléoptères trouvés dans les momies d'Égypte. *Bulletin de la société entomologique d'Égypte* 1, 29–36.
- Allué, E., Euba, I., Solé, A., 2009. Charcoal taphonomy: the study of the cell structure and surface deformation of *Pinus sylvestris* type for the understanding of formation processes of archaeological charcoal assemblages. *Journal of taphonomy* 7, 57–72.
- Andersen, G.L., 2012. Vegetation and Management Regime Continuity in the Cultural Landscape of the Eastern Desert, in: Barnard, H., Duistermaat, K. (Eds.), *The History of the Peoples of the Eastern Desert*. Cotsen Institute of Archaeology Press, Los Angeles, pp. 127–139.
- Andersen, G.L., Krzywinski, K., 2007a. Mortality, Recruitment and Change of Desert Tree Populations in a Hyper-Arid Environment. *PLoS ONE* 2, e208. <https://doi.org/10.1371/journal.pone.0000208>
- Andersen, G.L., Krzywinski, K., 2007b. Longevity and growth of *Acacia tortilis*; insights from 14C content and anatomy of wood. *BMC Ecol* 7, 4. <https://doi.org/10.1186/1472-6785-7-4>
- Attia, R., Kamel, A.H., 1965. The fauna of stored products. *Bulletin de la société entomologique d'Égypte* 49, 221–232.
- Barakat, H., Baum, N., 1992. La végétation antique de Douch (oasis de Kharga), une approche macrobotanique, Document de fouille de l'Institut français d'archéologie orientale. IFAO, Cairo.
- Barnard, H., Duistermaat, K., 2012. *The History of the Peoples of the Eastern Desert*. Cotsen Institute of Archaeology Press, Los Angeles.
- Barron, T., Hume, W.F., 1902. *The topography and geology of the Eastern desert of Egypt: central portion*. National printing department, Cairo.
- Beeson, C.F.C., Bhatia, B.M., 1937. On the biology of the Bostrychidae (Coleopt.) Indian forest records. *Entomology* 2, 223–323.
- Belal, A., Briggs, J., Sharp, J., Springuel, I., 2009. *Bedouins by the lake: environment, change, and sustainability in southern Egypt*. American Univ in Cairo Press, Cairo.

- Bouchaud, C., 2020. Combustible, bois de construction, alimentation végétale et végétation : les données archéobotaniques de Samut nord, in: Redon, B., Faucher, T. (Eds.), Samut Nord. L'exploitation de l'or Du Désert Oriental à l'époque Ptolémaïque, IFAO. Institut Français d'Archéologie Orientale, Cairo, pp. 240–279.
- Bouchaud, C., Newton, C., Van der Veen, M., Vermeeren, C., 2018. Fuelwood and Wood Supplies in the Eastern Desert of Egypt during Roman Times, in: Brun, J.-P., Faucher, T., Redon, B., Sidebotham, S. (Eds.), The Eastern Desert of Egypt during the Greco-Roman Period: Archaeological Reports, Mondes Méditerranéens Antiques. OpenEditionBooks, Collège de France, Paris.
- Boulos, L., 2005. Flora of Egypt. Volume 4. Monocotyledons (Alismataceae-Orchidaceae). Al Hadara, Cairo.
- Boulos, L., 2002. Flora of Egypt. Volume 3 (Verbinaceae-Compositae). Al Hadara, Cairo.
- Boulos, L., 2000. Flora of Egypt. Volume 2 (Geraniaceae-Boraginaceae). Al Hadara, Cairo.
- Boulos, L., 1999. Flora of Egypt. Volume 1 (Azollaceae-Oxalidaceae). Al Hadara, Cairo.
- Boulos, L., El-Hadidi, M.N., 1994. The weed flora of Egypt. The American Univeristy in Cairo Press, Cairo.
- Butzer, K., 1999. Climatic history, in: Bard, K. (Ed.), Encyclopedia of the Archaeology of Egypt. Routledge, London, pp. 195–198.
- Cappers, R.T.J., 2016. Modelling shifts in cereal cultivation in Egypt from the start of agriculture until modern times, in: Thanheiser, U. (Ed.), News from the Past: Progress in African Archaeobotany. Proceedings of the 7th International Workshop on African Archaeobotany in Vienna, 2-5 July 2012, Advances in Archaeobotany. Barkhuis, Groningen, pp. 27–36.
- Cappers, R.T.J., 2006. Roman foodprints at Berenike: archaeobotanical evidence of subsistence and trade in the Eastern Desert of Egypt. Cotsen Institute of Archaeology, University of California Press, Los Angeles.
- Cappers, R.T.J., Neef, R., 2012. Handbook of plant palaeoecology, Groningen archaeological studies. Barkhuis, Groningen.
- Cappers, R.T.J., Neef, R., Bekker, R.M., Fantone, F., Okur, Y., 2016. Digital atlas of traditional agricultural practices and food processing, Groningen archaeological studies. Barkhuis, Groningen.
- Chabal, L., 2014. Le bois dans l'architecture et le mobilier (500-475 av. notre ère). Le boisement aux origines de Lattara. Lattara 22, 115–165.
- Charles, M., 1998. Fodder from dung: the recognition and interpretation of dung-derived plant material from archaeological sites. Environmental Archaeology 1, 111–122.
- Chase, M.W., Christenhusz, M.J.M., Fay, M.F., Byng, J.W., Judd, W.S., Soltis, D.E., Mabberley, D.J., Sennikov, A.N., Soltis, P.S., Stevens, P.F., 2016. An update of the Angiosperm Phylogeny Group classification for the orders and families of flowering plants: APG IV. Bot J Linn Soc 181, 1–20. <https://doi.org/10.1111/boj.12385>
- Christensen, A., 2001. Charcoal and coffee, in: Krzywinski, K., Pierce, R.H. (Eds.), Deserting the Desert a Threatened Cultural Landscape between the Nile and the Sea. Alvheim og Eide Akademisk Forlag, Bergen, pp. 109–132.
- Christensen, A., 1998. Faham fi! Charcoal production as part of urban-rural interaction in the Red Sea Hills, Sudan. Department of geography/Nansen environmental and remote sensing center, University of Bergen.
- Crawford, D.J., 1979. Food: Tradition and Change in Hellenistic Egypt. World Archaeology 11, 136–146.
- Curry, A., 1979. The insects associated with the Manchester mummies, in: David, R. (Ed.), The Manchester Mummy Project: Multidisciplinary Research on Ancient Egyptian Mummified Remains. Cassell Ltd., manchester, pp. 113–118.
- Cuvigny, H. (Ed.), 2011. Didymoi. Une garnison romaine dans le désert Oriental d'Égypte (Praesidia du désert de Bérénice IV). Volume 1. Les fouilles et le matériel, Fouilles de l'IFAO. Institut Français d'Archéologie Orientale, Cairo.

- David, R., 1978. The fauna, in: David, R. (Ed.), *Mysteries of the Mummies. The Story of the Manchester University Investigations*. Cassell Ltd., New York, pp. 160–167.
- Dufraisse, A., Coubray, S., Girardclos, O., Nocus, N., Lemoine, M., Dupouey, J.-L., Marguerie, D., 2017. Anthraco-typology as a key approach to past firewood exploitation and woodland management reconstructions. Dendrological reference dataset modelling with dendro-anthracological tools. *Quaternary International* online. <https://doi.org/10.1016/j.quaint.2017.03.065>
- Durand, A., Vaschalde, C., Daide, H., El Abbadi, M., 2018. Le charbonnage en fosse. Approche ethnoarchéologique d'une pratique méconnue dans le Rif marocain, in: Paradis-Grenouillet, S., Burri, S., Rouaud, R. (Eds.), *Charbonnage, Charbonnières, Charbonniers. Confluence de Regards Autour d'un Artisanat Méconnu*. Presse Universitaire de Provence, Limoges, pp. 13–22.
- Edde, P.A., 2012. A review of the biology and control of *Rhyzopertha dominica* (F.), the lesser grain borer. *Journal of stored products research* 48, 1–18.
- Español, F., 1947. Pselafidos, Cleridos y Bostriquidos (Col.) del Sahara español. *Eos* 23, 341–355.
- Fagg, C., Stewart, J., 1994. The value of *Acacia* and *Prosopis* in arid and semi-arid environments. *Journal of Arid Environments* 27, 3–25.
- Fahn, A., Werker, E., Baas, P., 1986. Wood anatomy and identification of trees and shrubs from Israel and adjacent regions. the Israel academy of Sciences and Humanities, Jerusalem.
- Gallazzi, C., Hadji-Minaglou, G., 2000. Tebtynis. I, La reprise des fouilles et le quartier de la Chapelle d'Isis-Thermouthis: fouilles franco-italiennes. Institut Français d'Archéologie Orientale, Cairo.
- Gazda, E.K., 2004. Karanis. An Egyptian town in Roman times. Discoveries of the University of Michigan expedition to Egypt (1924-1935), Kelsey Museum Publication 1. Kelsey Museum of Archaeology, University of Michigan, Ann Arbor.
- Gomy, Y., 2007. Description d'une nouvelle espèce de *Teretrius* Erichson, 1834 du Maroc (Coleoptera, Histeridae). *Bulletin mensuel de la société linéenne de Lyon* 76, 113–119.
- Grüss, J., 1930. Das ägyptische Bierbrot und Bier der heutigen Zeit. *Tageszeitung für Braverei* 162, 679–681.
- Halperin, J., Damoiseau, R., 1980. The Bostrychid beetles (Coleoptera) of Israel. *Israel Journal of Entomology* 14, 47–53.
- Halperin, J., Geis, K.U., 1999. Lyctidae (Coleoptera) of Israel, their damage and its prevention. *Phytoparasitica* 27, 257–262.
- Henein, N.H., 2001. Mārī Girgis. Village de Haute-Égypte, Bibliothèque d'étude. Institut Français d'Archéologie Orientale, Cairo.
- Henry, A., Théry-Parisot, Isabelle, 2014. La gestion des combustibles au Mésolithique : orientation actuelles de la recherche en archéobotanique. *Paletnologie* 6, 65–83.
- Hillman, G.C., Madeyska, E., Hather, J., 1989. Wild plant foods and diet at Late Paleolithic Wadi Kubbaniya: the evidence from charred remains, in: Close, A. (Ed.), *The Prehistory of Wadi Kubbaniya*, Vol.2. Southern Methodist University Press, Dallas, pp. 162–242.
- Hobbs, J.J., 1989. *Bedouin Life in the Egyptian Wilderness*. University of Texas Press, Austin.
- Hoelzmann, P., Gasse, F., Dupont, L.M., Salzmann, U., Staubwasser, M., Leuschner, D.C., Sirocko, F., 2004. Palaeoenvironmental changes in the arid and sub arid belt (Sahara-Sahel-Arabian Peninsula) from 150 kyr to present, in: Battarbee, R.W., Gasse, F., Stickley, C.E. (Eds.), *Past Climate Variability through Europe and Africa, Developments in Palaeoenvironmental Research*. Springer, Dordrecht, pp. 219–256. https://doi.org/10.1007/978-1-4020-2121-3_12
- Hope, F.W., 1836. Notice of several species of insects found in the heads of Egyptian mummies. *Transactions of the Royal entomological society of London* 1, 11–13.
- Huchet, J.-B., 2016. Archéontomologie et archéoparasitologie d'une momie égyptienne. *Techne* 44.
- Huchet, J.-B., 2010. Des insectes, des momies : l'apport de l'entomologie à l'étude des pratiques funéraires des sociétés anciennes, in: Cartron, I., Castex, D., Georges, P., Vivas, M., Charageat, M. (Eds.), *De Corps En Corps, Traitement de Devenir Du Cadavre. Actes Des*

- Séminaires de La Maison Des Sciences de l'Homme d'Aquitaine (Mars-Juin 2008). Maison des sciences de l'Homme d'Aquitaine, Pessac, pp. 33–55.
- Huchet, J.-B., 1995. Insectes et momies égyptiennes. *Bulletin de la société linéenne de Bordeaux* 23, 29–39.
- Krzywinski, K., 2001. Charcoal in the Eastern desert in Roman and Byzantine times, in: Krzywinski, Knut, Pierce, R.H. (Eds.), *Deserting the Desert a Threatened Cultural Landscape between the Nile and the Sea*. Alvheim og Eide Akademisk Forlag, Bergen, pp. 133–142.
- Kuper, R., Kröpelin, S., 2006. Climate-Controlled Holocene Occupation in the Sahara: Motor of Africa's Evolution. *Science* 311, 803.
- Le Floch, E., Grouzis, M., 2003. *Acacia raddiana*, un arbre des zones arides à usages multiples, in: Grouzis, M., Le Floch, E. (Eds.), *Un Arbre Au Désert : Acacia Raddiana*. IRD éditions, pp. 21–58.
- Le Houérou, H.N., 2002. Man-Made Deserts: Desertization Processes and Threats. *Arid Land Research and Management* 16, 1–36. <https://doi.org/10.1080/153249802753365296>
- Le Houérou, H.N., 1990. Agroforestry and sylvopastoralism to combat land degradation in the Mediterranean Basin: old approaches to new problems. *Agriculture, Ecosystems & Environment* 33, 99–109. [https://doi.org/10.1016/0167-8809\(90\)90236-7](https://doi.org/10.1016/0167-8809(90)90236-7)
- Leek, F.F., 1973. Further studies concerning Ancient Egyptian bread. *Journal of Egyptian Archaeology* 59, 199–204.
- Leguilloux, M., 2020. Utilisation et exploitation des animaux domestiques : les données archéozoologiques de Samut nord, in: Redon, B., Faucher, T. (Eds.), *Samut Nord. L'exploitation de l'or Du Désert Oriental à l'époque Ptolémaïque*, FIFAO. Institut Français d'Archéologie Orientale, Cairo, pp. 288–307.
- Lepesme, P., 1944. Les coléoptères des denrées alimentaires et des produits industriels entreposés, *Encyclopédie entomologique*. Paul Chevalier, Paris.
- Lesne, P., 1924. Les coléoptères bostrychides de l'Afrique tropicale française. *Encyclopédie entomologique Série A*, 1–301.
- Lesne, P., 1901. Revision des coléoptères de la famille des Bostrychides. *Annales de la Société entomologique de France* 69, 473–639.
- Mahla, H.R., Rathore, V.S., Singh, D., Singh, J.P., 2012. *Capparis decidua* (Forsk.) Edgew.: an underutilized multipurpose shrub of hot arid region—distribution, diversity and utilization. *Genet Resour Crop Evol* 60, 385–394. <https://doi.org/10.1007/s10722-012-9934-3>
- Mahmoud, T., 2010. *Desert Plants of Egypt's Wadi El Gemal National Park*. American University in Cairo Press, Le Caire, New York.
- Marchand, S., 2015. Bols en bois peint d'Egypte d'époque ptolémaïque, Ile-ler s. av. J.-C. *Instrumentum. Bulletin du Groupe de travail européen sur l'artisanat et les productions manufacturées de l'Antiquité à l'époque moderne* 42, 27–30.
- Marguerie, D., Hunot, J.-Y., 2007. Charcoal analysis and dendrology: data from archaeological sites in north-western France. *Journal of Archaeological Science* 34, 1417–1433. <https://doi.org/10.1016/j.jas.2006.10.032>
- Marinova, E., Linseele, V., Kühn, M., 2013. Bioarchaeological research on animal dung—possibilities and limitations. *Environmental Archaeology* 18, 1–3.
- Mateu, J., 1975. Les insectes xylophages des Acacia dans les régions sahariennes. *Anais Fac Ciencias do Porto, Porto*.
- McParland, L.C., Collinson, M.E., Scott, A.C., Campbell, G., Veal, R., 2010. Is vitrification in charcoal a result of high temperature burning of wood? *Journal of Archaeological Science* 37, 2679–2687. <https://doi.org/10.1016/j.jas.2010.06.006>
- Megaloudi, F., 2005. Burnt sacrificial plant offerings in Hellenistic times: an archaeobotanical case study from Messene, Peloponnese, Greece. *Vegetation history and archaeobotany* 14, 329–340.
- Miller, N.F., 1984. The use of dung as fuel : an ethnographic example and an archaeological application. *Paléorient* 10, 71–79.

- Moeyersons, J., Vermeersch, P.M., Beeckman, H., Van Peer, P., 1999. Holocene environmental changes in the Gebel Umm Hammad, Eastern Desert, Egypt. *Geomorphology* 26, 297–312. [https://doi.org/10.1016/S0169-555X\(98\)00067-1](https://doi.org/10.1016/S0169-555X(98)00067-1)
- Moskal-del Hoyo, M., Wachowiak, M., Blanchette, R.A., 2010. Preservation of fungi in archaeological charcoal. *Journal of Archaeological Science* 37, 2106–2116.
- Murray, M.A., 2000a. Cereal production and processing, in: Nicholson, P., Shaw, I. (Eds.), *Ancient Egyptian Materials and Technology*. Cambridge University Press, Cambridge, pp. 505–536.
- Murray, M.A., 2000b. Fruits, vegetables, pulses and condiments, in: Nicholson, P., Shaw, I. (Eds.), *Ancient Egyptian Materials and Technology*. Cambridge University Press, Cambridge, pp. 609–55.
- Neef, R., Cappers, R.T.J., Bekker, R.M., 2012. Digital atlas of economic plants in archaeology, Groningen archaeological studies. Barkhuis & Groningen University Library, Groningen.
- Neumann, K., Schoch, W., Détienne, P., Schweingruber, F.H., 2001. Woods of the Sahara and the Sahel: an anatomical atlas. Paul Haupt, Bern.
- Newton, C., Chaix, L., Masson, A., in press. Les plantes et les animaux, in: Masson, A. (Ed.), *Le Quartier Des Prêtres Du Temple d'Amon à Karnak*.
- Newton, C., Clapham, A.J., in press. Egyptian oasis crop productions and potential exports from the Pharaonic Period to Late Roman times: a first archaeobotanical review, in: Marchand, S. (Ed.), *La Céramique Du Désert Occidental de La Fin Du Néolithique à l'époque Médiévale. La Marmarique et Les Oasis de Bahariya, Dakhla et Kharga, Cahiers de La Céramique Égyptienne*. Institut Français d'Archéologie Orientale, Cairo.
- Osborne, D.J., 1968. Notes on medicinal and other uses of plants in Egypt. *Economic Botany* 22, 165–177.
- Panagiotakopulu, E., 2001. New records for Ancient pests: archaeoentomology in Egypt. *Journal of Archaeological Science* 28, 1235–1246.
- Panagiotakopulu, E., 1998. An insect study from Egyptian stored products in the Liverpool museum. *The Journal of Egyptian Archaeology* 84, 231–234.
- Peacock, D.P.S., Blue, L., 2006. Myos Hormos-Quseir al-Qadim, Roman and Islamic Ports on the Red Sea, Volume 1: The Survey and Report on the Excavations. Oxbow Books, Oxford.
- Peacock, D.P.S., Maxfield, V.A. (Eds.), 2007. The Roman imperial quarries. Survey and excavations at Mons Porphyrites 1994-1998. Volume 2 : the excavations. Egypt exploration society, London.
- Peters-Destéract, M., 2005. Pain, bière et toutes bonnes choses. L'alimentation dans l'Égypte ancienne., Champollion. Editions du Rocher, Paris.
- Préaux, C., 1939. L'économie royale des Lagides. Fondation Egyptologique Reine Elisabeth, Brussels.
- Redon, B., 2018. La prise en main du désert Oriental par les Lagides : nouvelles données archéologiques, in: Brun, J.-P., Faucher, T., Redon, B. (Eds.), *Le désert oriental d'Égypte durant la période gréco-romaine: bilans archéologiques, Mondes méditerranéens antiques*. OpenEditionBooks, Collège de France, Paris.
- Redon, B., 2016. Exploiter et traverser le désert oriental d'Égypte sous les premier Ptolémées : recherches récentes dans le district de Samut. *Compte-rendu de l'Académie des inscriptions et belles-lettres* 1323–1339.
- Redon, B., Chaufray, M.-P., 2020. Approvisionnement et population du site ptolémaïque minier de Samut nord: analyse des ostraca démotiques et grecs, in: Redon, B., Faucher, T. (Eds.), *Samut Nord. L'exploitation de l'or Du Désert Oriental à l'époque Ptolémaïque*, FIFAO. IFAO, Cairo, pp. 101–132.
- Redon, B., Faucher, T. (Eds.), 2020. *Samut Nord. L'exploitation de l'or du désert Oriental à l'époque ptolémaïque*, FIFAO. Institut Français d'Archéologie Orientale, Cairo.
- Redon, B., Faucher, T., Brun, J.-P., 2020. Conclusions sur la mine de Samut nord et l'exploitation de l'or du désert Oriental au début de l'époque ptolémaïque, in: Redon, B., Faucher, T. (Eds.), *Samut Nord. L'exploitation de l'or Du Désert Oriental à l'époque Ptolémaïque*, FIFAO. Institut Français d'Archéologie Orientale, Cairo, pp. 325–342.

- Schnebel, M., 1925. Die Landwirtschaft im hellenistischen Ägypten. Beck Verlagsbuchhandlung, München.
- Solomon, M.E., 1965. Archaeological records of storage pests: *Sitophilus granarius* L. (Coleoptera, Curculionidae) from an Egyptian pyramid tomb. *Journal of stored product research* 1, 105–107.
- Springuel, I., Mekki, A.M., 1994. Economic Value of Desert Plants: Acacia Trees in the Wadi Allaqi Biosphere Reserve. *Environmental Conservation* 21, 41–48. <https://doi.org/10.1017/S0376892900024061>
- Tengberg, M., 2011. L'acquisition et l'utilisation des produits végétaux à Didymoi, in: Cuvigny, H. (Ed.), *Didymoi. Une Garnison Romaine Dans Le Désert Oriental d'Égypte (Praesidia Du Désert de Bérénice IV)*. Volume 1. Les Fouilles et Le Matériel. Institut français d'archéologie orientale, Cairo, pp. 205–214.
- The Angiosperm phylogeny group, 2009. An update of the Angiosperm Phylogeny Group classification for the orders and families of flowering plants: APG III. *Bot J Linn Soc* 161, 105–121. <https://doi.org/10.1111/j.1095-8339.2009.00996.x>
- Théry-Parisot, I., Chabal, L., Chrzavzez, J., 2010. Anthracology and taphonomy, from wood gathering to charcoal analysis. A review of the taphonomic processes modifying charcoal assemblages, in archaeological contexts. *Palaeogeography, palaeoclimatology, palaeoecology* 291, 142–153.
- Théry-Parisot, I., Henry, A., 2012. Seasoned or green? Radial cracks analysis as a method for identifying the use of green wood as fuel in archaeological charcoal. *Journal of Archaeological Science* 39, 381–388. <https://doi.org/10.1016/j.jas.2011.09.024>
- Van der Veen, M., 2011. Consumption, Trade and Innovation: Exploring the Botanical remains from the Roman and Islamic Ports at Quseir al-Qadim, Egypt. *Africa Magna Verlag, Frankfurt*.
- Van der Veen, M., 2001. The Botanical evidence (Chapter 8), in: Maxfield, V.A., Peacock, D.P.S. (Eds.), *Survey and Excavation: Mons Claudianus, 1987-1993. The Excavations: Part 1, Documents de Fouilles*. Institut Français d'Archéologie Orientale, Cairo, pp. 174–247.
- Van der Veen, M., Bouchaud, C., Cappers, R., Newton, C., 2018. Roman life in the Eastern Desert of Egypt: food, imperial power and geopolitics, in: Brun, J.-P., Faucher, T., Redon, B. (Eds.), *The Eastern Desert of Egypt during the Greco-Roman Period: Archaeological Reports, Mondes Méditerranéens Antiques*. OpenEditionBooks, Collège de France, Paris.
- Van der Veen, M., Tabinor, H., 2007. Food, fodder and fuel at Mons Porphyrites: the botanical evidence., in: Peacock, D.P., Maxfield, V.A. (Eds.), *The Roman Imperial Quarries. Survey and Excavations at Mons Porphyrites 1994-1998. Volume 2 : The Excavations*. Egypt exploration society, London, pp. 83–142.
- Vandenbeusch, M., 2017. Roofing houses at Amara West: A case study, in: Spencer, N., Stevens, A., Binder, M. (Eds.), *Nubia in the New Kingdom. Lived Experience, Pharaonic Control and Indigenous Traditions*, British Museum Publications on Egypt and Sudan. Peeters, Leuven, Paris, Bristol, pp. 389–406.
- Vermeeren, C., 2000. Wood and charcoal, in: Sidebotham, S., Wendrich, W.Z. (Eds.), *Berenike 1998: Report of the 1998 Excavation at Berenike and the Survey of the Egyptian Eastern Desert, Including Excavations in Wadi Kalalat*. CNWS, Leiden, pp. 311–342.
- Vermeeren, C., 1999. Wood and charcoal, in: Sidebotham, S., Wendrich, W.Z. (Eds.), *Berenike 1997: Report of the 1997 Excavation at Berenike and the Survey of the Egyptian, Including Excavations at Shenshef Eastern Desert, Special Series 4*. CNWS, Leiden, pp. 307–429.
- Vermeeren, C., 1998. Wood and charcoal, in: Sidebotham, S., Wendrich, W.Z. (Eds.), *Berenike 1996: Report of the 1996 Excavation at Berenike (Egyptian Red Sea Coast) and the Survey of the Eastern Desert*. CNWS, Leiden, pp. 331–348.
- Vidal-Matutano, P., Henry, A., Théry-Parisot, I., 2017. Dead wood gathering among Neanderthal groups: Charcoal evidence from Abric del Pastor and El Salt (Eastern Iberia). *Journal of Archaeological Science* 80, 109–121. <https://doi.org/10.1016/j.jas.2017.03.001>

- Wasylikowa, K., Schild, R., Wendorf, E., Krolik, H., Kubiak-Martens, L., Harlan, J.R., 1964. Archaeobotany of the Early neolithic site E-75-6 at Nbata Playa, Western desert, South Egypt (preliminary results). *Acta Palaeobotanica* 35, 133–155.
- Wickens, G.E., 1995. Rôle des acacias dans l'économie rurale des régions sèches d'Afrique et du Proche-Orient / Role of Acacia species in the rural economy of dry Africa and the Near East, FAO Conservation Guide. FAO, Rome.
- Zacher, F., 1937. Vorratsschädlinge und vorratsschutz, ihre Bedeutung für Volksernährung und Weltwirtschaft. *Zeitschrift für hygienische Zoologie und Schädlingsbekämpfung* 29, 193–202.
- Zahran, M.A., Willis, A.J., 2009. The vegetation of Egypt, Springer. ed. Springer e-books, Dordrecht.

Captions list

Figure 1. Location of Samut District and main sites of Eastern Desert during Ptolemaic period (© MAFDO, A. Rabot, Th. Faucher, B. Redon, 2018).

Figure 2. Satellite view of Samut North (left, ©GeoEye1) and **plan of Building 1 – scale 1/200** (right, © MAFDO, survey B. Redon, Th. Faucher, J.-P. Brun, F. Téreygeol – Photogrammetry G. Pollin (Ifao) – DAO M. Vanpeene).

Figure 3. Present vegetation around Samut North (© C. Bouchaud)

- A. Isolated recently cut acacia (*Acacia tortilis* subsp. *raddiana*)
- B. Gallery forest of acacia trees (*Acacia tortilis* subsp. *raddiana/tortilis*, *A. ehrenbergiana*) with lower stratum of green shrubs (*Zilla spinosa*) and herbaceous plants (*Fagonia* sp., *Morettia philaeana*).

Figure 4. Wooden elements

- A. Twigs and branches of *Leptadenia pyrotechnica* (© C. Bouchaud)
- B. Beam of cf. *Capparis* sp. (© C. Bouchaud)
- C. Door from 125.03 (orthophoto, Photogrammetry: G. Pollin, DAO: O. Onézime, IFAO)
- D. Bowl PO 202 (© MAFDO, A. Bülow-Jacobsen)

Figure 5. *Acacia ehrenbergiana/etbaica/tortilis* type. Transversal (a), tangential (b) and radial (c) sections (© C. Bouchaud). Green arrows = radial cracks; yellow arrow = fungi hyphae.

Figure 6. Plant macroremains from Samut North (© C. Bouchaud). (a) *Hordeum vulgare* grain with lemma and palea; (b) free-threshing wheat grain, probably *Triticum turgidum* subsp. *durum/polanicum/turgidum*; (c) *Panicum turgidum* seed; (d) Undetermined “half-moon” type from Samut North (left), Xeron Pelagos, 1st–3rd c. CE, Eastern Desert (centre), Dumat al-Jandal, 1st–3rd c. AD, Saudi Arabia (right).

Figure 7. Lentils (*Lens culinaris*) contained on a lead plate, inside the red square (a) and details (b). (© MAFDO, A. Bülow-Jacobsen) Only one lentil (top left) does not have testa.

Figure 8. Bostrichidae insects from Samut North. Modern specimens are indicated by an arrow (left) *Enneadesmus forficula*, right elytra; (right) *Calopertha truncatula*, right elytra (left) and fragment of pronotum (right). Photos of the archaeological specimens: J.-B. Huchet; modern specimens © F. Génier, Canadian Museum of Nature, Ottawa, Ontario, Canada.

Figure 9. Crop pests from Samut North. (left) *Sitophilus granarius*, pronotum; (centre) *Rhyzopertha dominica*, left erytra; (right) *Oryzaephilus surinamensis*, left erytra. Photos: J.-B. Huchet.

Figure 10. Charcoal fragments from Room 137 (© MAFDO, J.-P. Brun).

Figure 11. Correspondence analysis on archaeological contexts with charcoal, seed and fruit remains. Cons=consistence, Copro=coprolite, DIV=charcoal taxonomical diversity, Rad-C=radial cracks, Hyp=fungi hyphae, Tw-Br=twigs, branches, Vitr=vitrification.

Figure 12. Horizontal arrangement of branches within the destruction layers of Building 1 (© MAFDO, C. Bouchaud).

Table 1. List and description of samples.

Black=presence of ecofacts

Grey=charcoal, wood or insect sample that have not been studied

Volume (l)=volume of soil sample, in litre.

H-P=hand-picked material.

Table 2. Charcoal analyses. Taxonomical identification and counting (ubiquity). Volume (l) = volume of bulk sediment, in litres.

Table 3. Resum of dendro-anthracological criteria. See supplementary data 2 for details.

Only acacia charcoal are included (cf. and other taxa excluded)

Nb fgmt=number of fragments analysed

Nb tax =number of taxa identified

Av. Length=average maximal length.

Table 4. Analysis of processed and unprocessed desiccated wood. Taxonomical identification, description and counting.

Measures indicated in [] are diameter categories; NR=number of items; Leng=length; Wid=width; Heig=height; diam=diameter.

Table 5. Desiccated seed and fruit remains data. Taxonomical identification and counting.

NRw=number of whole remains; NRfr=number of fragmented remains; MNI=minimal number of items.

Table 6. Charred seed and fruit remains data. Taxonomical identification and counting.

NRw=number of whole remains; NRfr=number of fragmented remains; MNI=Minimal number of items.

Supplementary data 1. Taxonomic saturation curves of charcoal samples.

Supplementary data 2. Details of dendro-anthracological criteria.

Dom=domestic; Stor=storage; Smit=smithy (see table 1 for details of contexts); N°=charcoal numbering; Heart=heartwood; Insect degra=insect degradation; Vitrif=vitrification; diam=diameter; Consist=consistence; React w=reaction wood
1=present and 0=absent for column "Bark", "Heart", "Thyles", "Fungi Hyphae", "Insect degra", "Radial cracks", "Vitrif" and "React w".

Supplementary data 3. Details of the correspondance analysis on archaeological contexts with charcoal, seed and fruit remains. Cons=consistence, Copro=coprolite, DIV=charcoal taxonomical diversity, Rad-C=radial cracks, Hyp=fungi hyphae, Tw-Br=twigs, branches, Vittr=vitrification. See table 3 for details. The variable "consistence" is a supplementary variable.

The correspondance analysis was created with the software AnalyseSHS (<http://analyse.univ-paris1.fr/>).

Figure 1. Location of Samut District and main sites of Eastern Desert during Ptolemaic period (© MAFDO, A. Rabot, Th. Faucher, B. Redon, 2018).

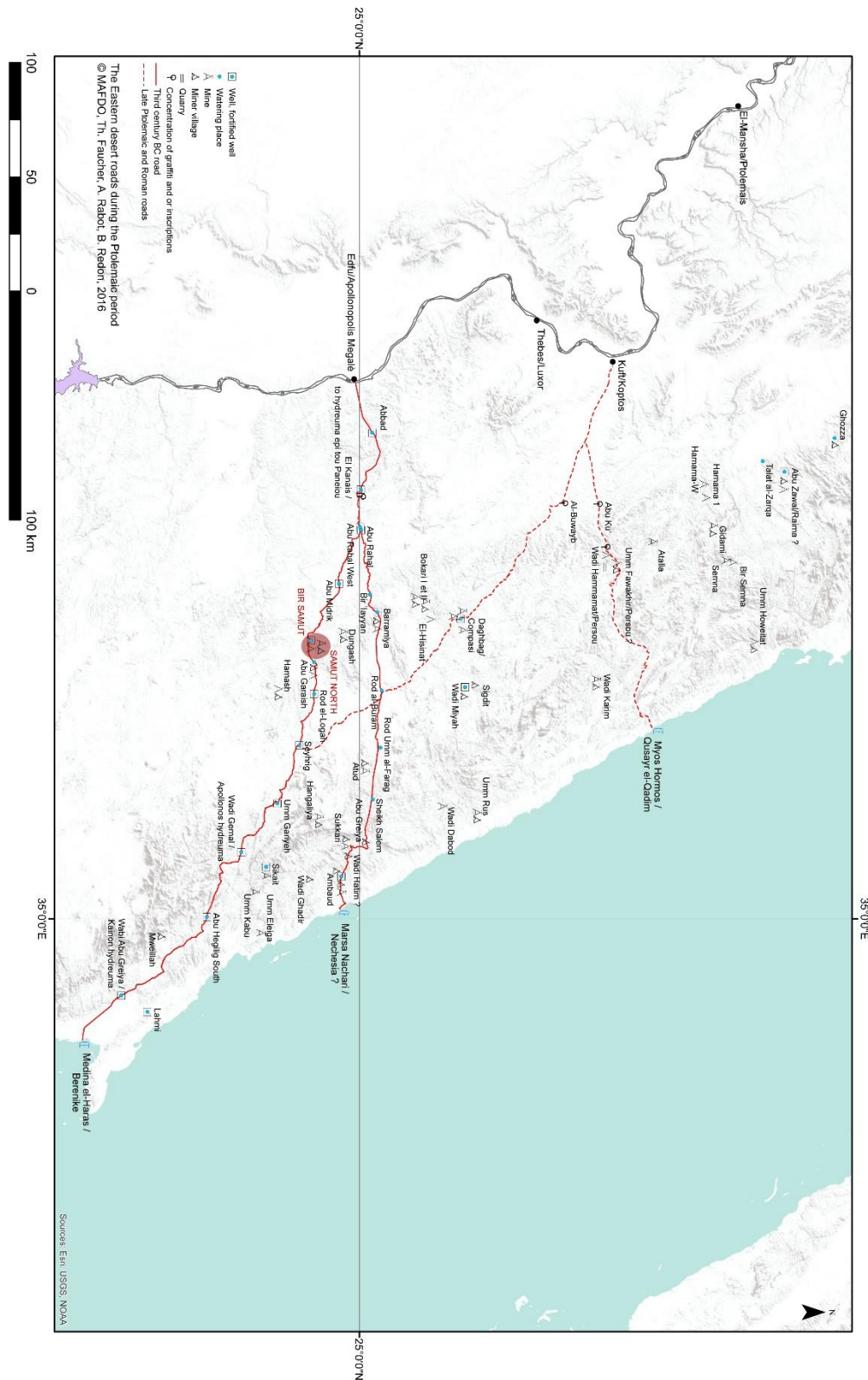


Figure 2. Satellite view of Samut North (left, ©GeoEye1) and plan of Building 1 – scale 1/200 (right, © MAFDO, survey B. Redon, Th. Faucher, J.-P. Brun, F. Téreygeol – Photogrammetry G. Pollin (Ifao) – DAO M. Vanpeene).

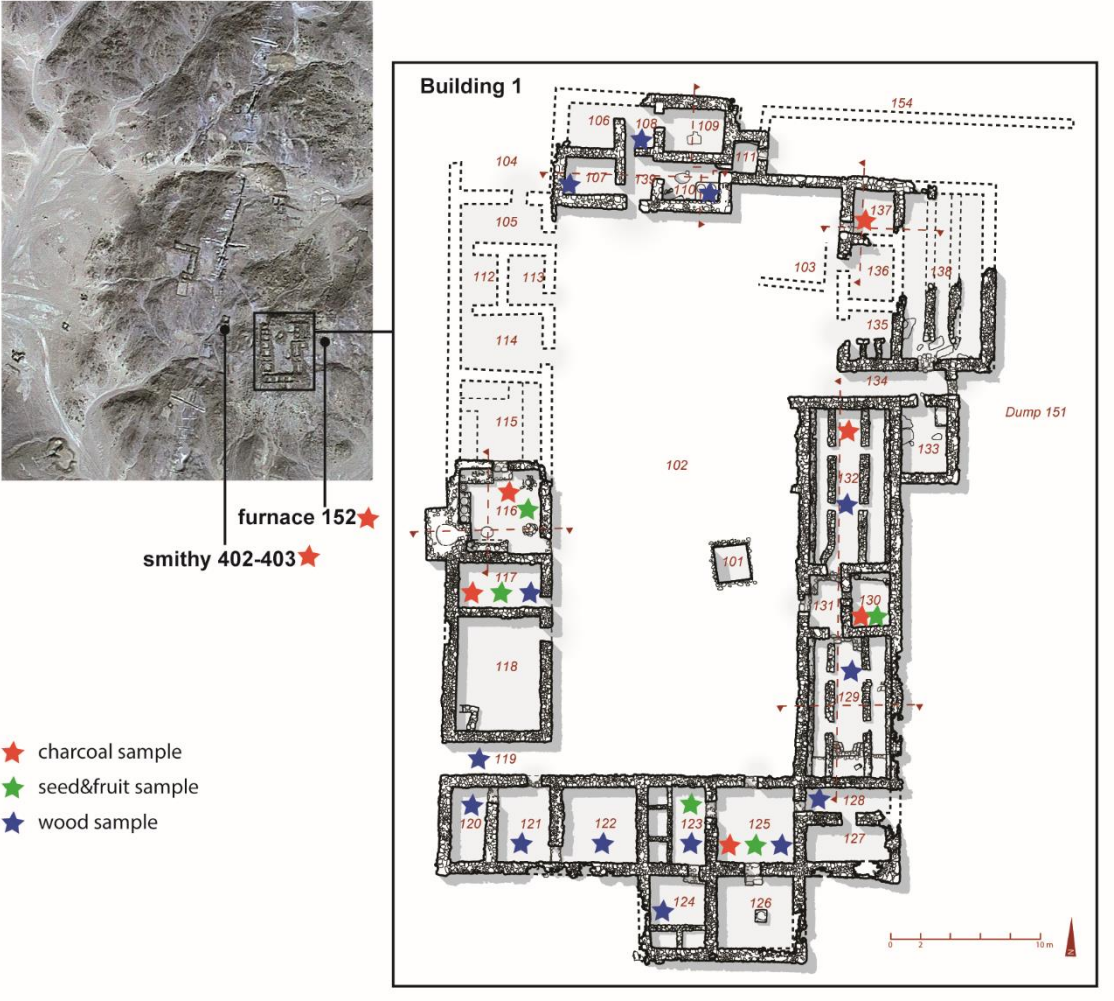


Figure 3. Present vegetation around Samut North (© C. Bouchaud)

- A. Isolated recently cut acacia (*Acacia tortilis* subsp. *raddiana*)
- B. Gallery forest of acacia trees (*Acacia tortilis* subsp. *raddiana/tortilis*, *A. ehrenbergiana*) with lower stratum of green shrubs (*Zilla spinosa*) and herbaceous plants (*Fagonia* sp., *Morettia philaeana*).



Figure 4. Wooden elements

- A. Twigs and branches of *Leptadenia pyrotechnica* (© C. Bouchaud)
- B. Beam of cf. *Capparis* sp. (© C. Bouchaud)
- C. Door from 125.03 (orthophoto, Photogrammetry: G. Pollin, DAO: O. Onézime, IFAO)
- D. Bowl PO 202 (© MAFDO, A. Bülow-Jacobsen)



Figure 5. *Acacia ehrenbergiana/etbaica/tortilis* type. Transversal (a), tangential (b) and radial (c) sections (© C. Bouchaud). Green arrows = radial cracks; yellow arrow = fungi hyphae.

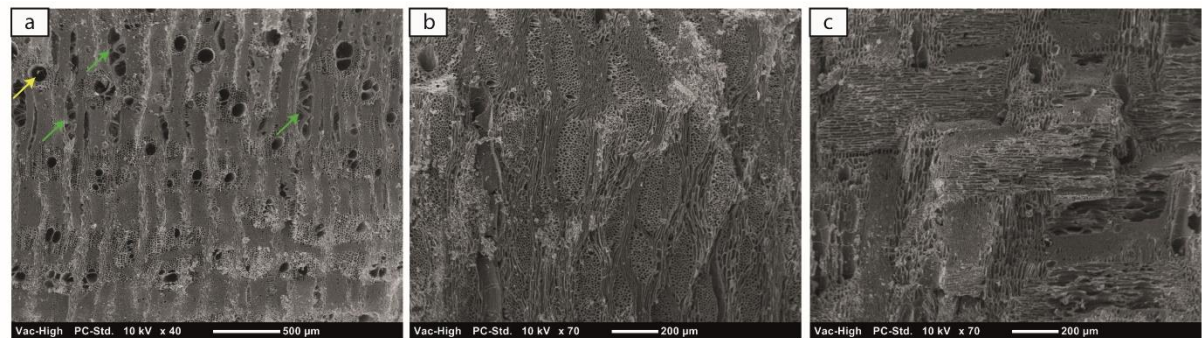


Figure 6. Plant macroremains from Samut North (© C. Bouchaud). (a) *Hordeum vulgare* grain with lemma and palea; (b) free-threshing wheat grain, probably *Triticum turgidum* subsp. *durum/polanicum/turgidum*; (c) *Panicum turgidum* seed; (d) Undetermined “half-moon” type from Samut North (left), Xeron Pelagos, 1st–3rd c. CE, Eastern Desert (centre), Dumat al-Jandal, 1st–3rd c. AD, Saudi Arabia (right).

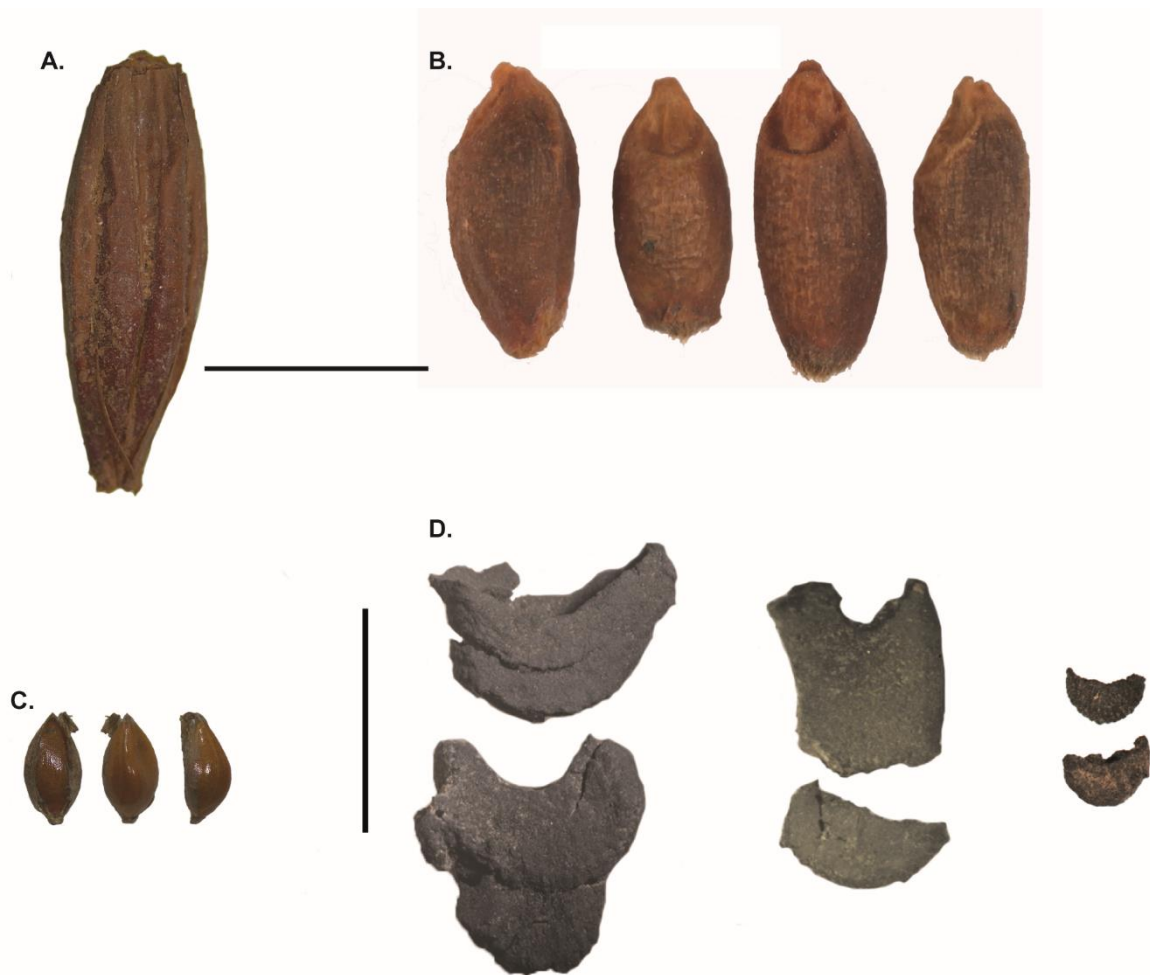


Figure 7. Lentils (*Lens culinaris*) contained on a lead plate, inside the red square (a) and details (b). (© MAFDO, A. Bülow-Jacobsen) Only one lentil (top left) does not have testa.

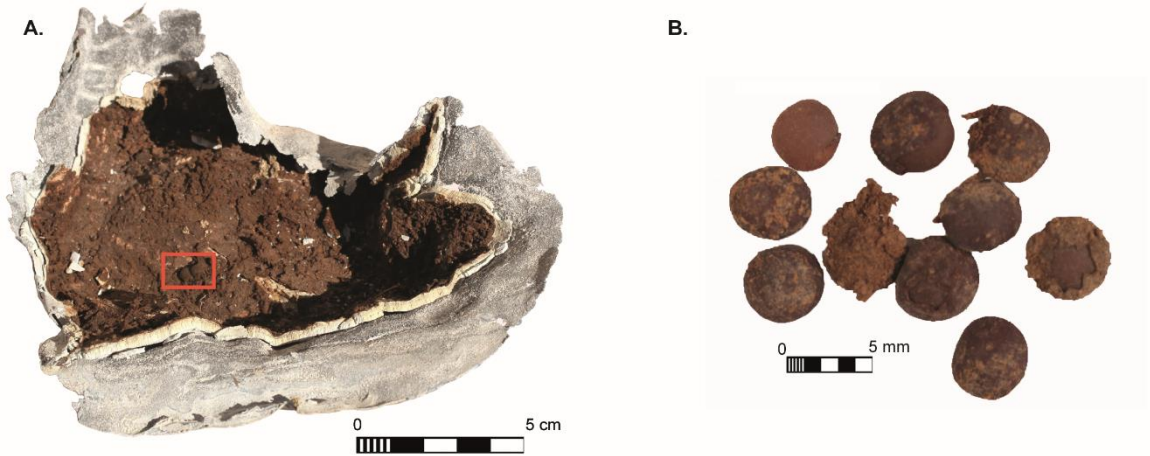


Figure 8. Bostrichidae insects from Samut North. Modern specimens are indicated by an arrow (left) *Enneadesmus forficula*, right elytra; (right) *Calopertha truncatula*, right elytra (left) and fragment of pronotum (right). Photos of the archaeological specimens: J.-B. Huchet; modern specimens © F. Génier, Canadian Museum of Nature, Ottawa, Ontario, Canada.

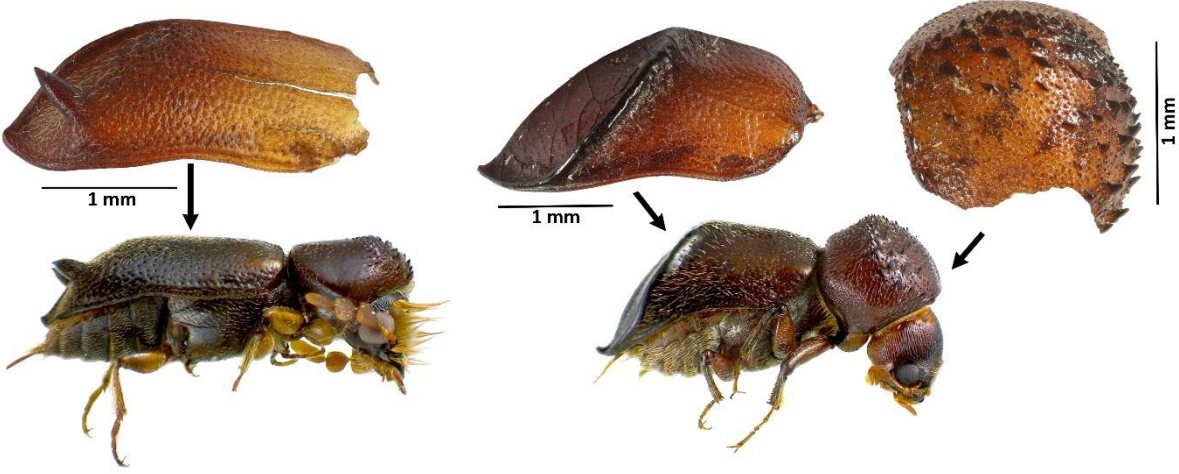


Figure 9. Crop pests from Samut North. (left) *Sitophilus granarius*, pronotum; (centre) *Rhizophorthera dominica*, left erytra; (right) *Oryzaephilus surinamensis*, left erytra. Photos: J.-B. Huchet.

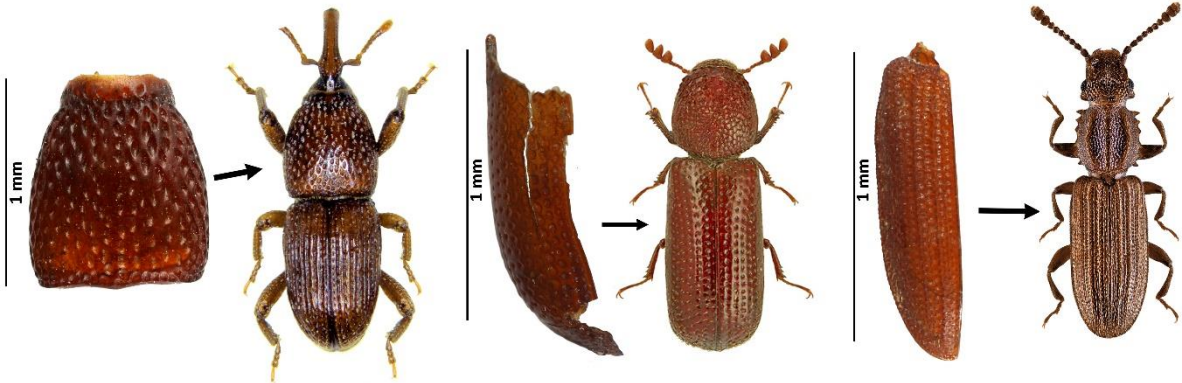


Figure 10. Charcoal fragments from Room 137 (© MAFDO, J.-P. Brun).



Figure 11. Correspondence analysis on archaeological contexts with charcoal, seed and fruit remains. Cons=consistence, Copro=coprolite, DIV=charcoal taxonomical diversity, Rad-C=radial cracks, Hyp=fungi hyphae, Tw-Br=twigs, branches, Vitr=vitrification.

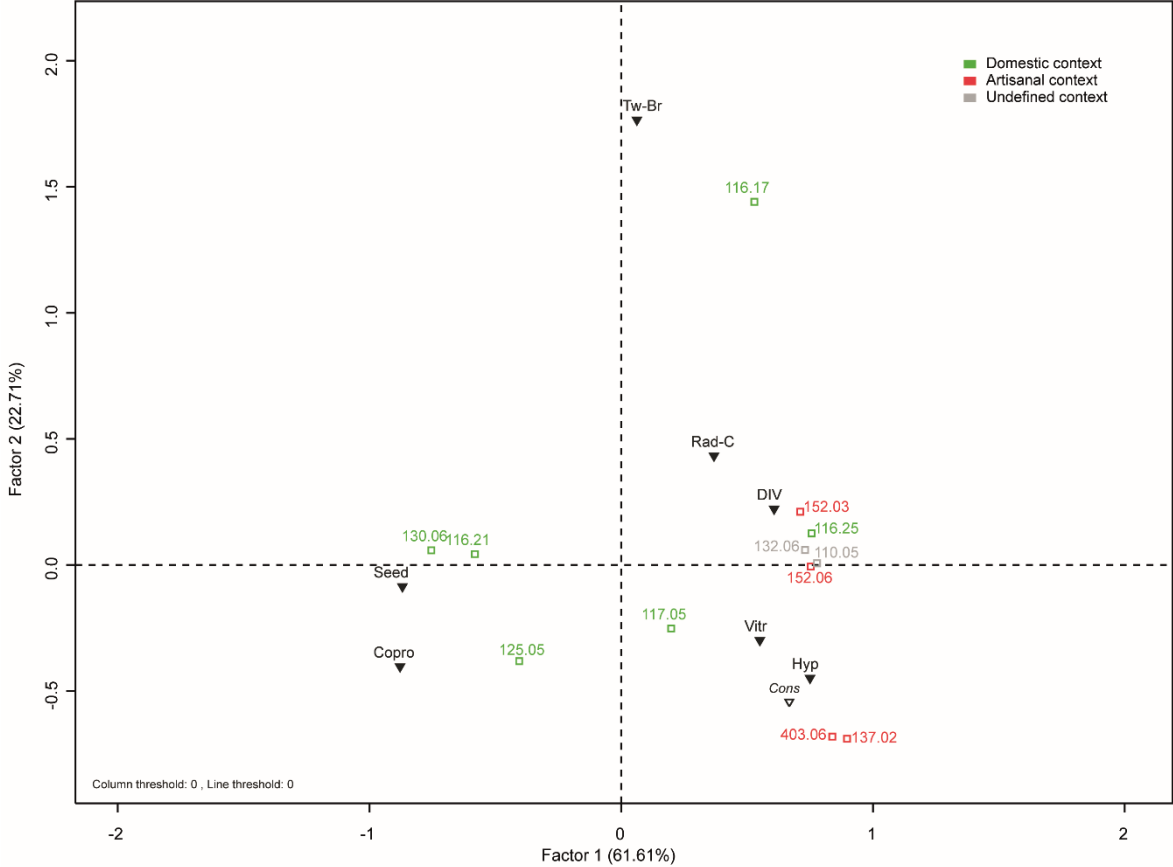


Figure 12. Horizontal arrangement of branches within the destruction layers of Building 1 (© MAFDO, C. Bouchaud).



Table 1. List and description of samples

Black=presence of ecofacts

Grey=charcoal, wood or insect sample that have not been studied

Volume (l)=volume of soil sample, in litre.

H-P=hand-picked material

| Year | Sample | Room | No. IFAO | Description | Volume (l) | Charcoal | Seed&fruit | Wood | Insect |
|------|----------------|------|-----------|------------------------------------------------|------------|----------|------------|-------|--------|
| 2015 | SN_107.05_Bot1 | 107 | 9276 | North wing. Destruction | H-P | | | Black | |
| 2015 | SN_108.02_Bot1 | 108 | | North wing. Destruction | H-P | | | Grey | |
| 2014 | SN_110.03_Bot1 | 110 | 5803 | North wing. Destruction | H-P | | | Black | |
| 2014 | SN_110.04_Bot1 | | 5804 | North wing. Destruction | H-P | | | Black | |
| 2014 | SN_110.05_Bot1 | | 5832 | North wing. Ashy layer | 2 | Black | | | |
| 2014 | SN_116.17_Bot1 | 116 | 5833 | West wing. Filling of the amphora (n°94) | 2 | Black | | | |
| 2014 | SN_116.21_Bot1 | | 5835 | West wing. Filling of one oven (n°76) | 2 | Black | Black | | |
| 2014 | SN_116.21_Bot2 | | 5836 | | 2 | Grey | Black | | |
| 2014 | SN_116.22_Bot1 | | 5837 | West wing. Filling of one oven (n°77) | 2 | Grey | Black | | Grey |
| 2014 | SN_116.22_Bot2 | | 5838 | | 2 | Grey | Black | | Grey |
| 2014 | SN_116.25_Bot1 | | 5840 | West wing. Oven n° 74. Ashy slab overlay | 2 | Black | | | |
| 2014 | SN_117.02_Bot1 | 117 | 5805 | West wing. Destruction layer | H-P | | | Black | |
| 2014 | SN_117.03_Bot1 | | 5806 | West wing. Destruction layer | H-P | | | Black | |
| 2014 | SN_117.05_Bot1 | | 5841 | West wing. Ashy layer | 2 | Black | | | |
| 2014 | SN_119.02_Bot1 | 119 | 5808 | Main entrance. Destruction layer | H-P | | | Black | |
| 2014 | SN_120.05_Bot1 | 120 | 5809 | South wing. Destruction layer | H-P | | | Black | |
| 2014 | SN_120.07_Bot1 | | | South wing. Destruction layer | H-P | | | Grey | |
| 2014 | SN_121.04_Bot1 | 121 | 5810 | South wing. Destruction layer | H-P | | | Black | |
| 2014 | SN_121.05_Bot1 | | 5811 | South wing. Destruction layer | H-P | | | Black | |
| 2015 | SN_121.07_Bot1 | | | South wing. Destruction layer = Po202 | H-P | | | Black | |
| 2014 | SN_122.05_Bot1 | 122 | 5812/5813 | South wing. Destruction layer | H-P | | | Black | |
| 2014 | SN_122.07_Bot1 | | 5814 | South wing. Destruction layer | H-P | | | Black | |
| 2014 | SN_123.02_Bot1 | 123 | 5842 | South wing. Inside and outside of a lead plate | - | | Black | | |
| 2014 | SN_123.02_Bot2 | | 5843 | | - | | | Black | |
| 2014 | SN_123.06_Bot1 | | 5815 | South wing. Destruction layer | H-P | | | Black | |
| 2014 | SN_123.07_Bot1 | | 5816 | South wing. Destruction layer | H-P | | | Black | |
| 2014 | SN_124.02_Bot1 | | 5817 | South wing. Destruction layer | H-P | | | Black | |

| | | | | | | | | | |
|------|----------------|-----|------|-----------------------------------------------------------|------|--|-------------------|--|--|
| 2014 | SN_124.03_Bot1 | 124 | 5818 | South wing. Destruction layer | H-P | | | | |
| 2014 | SN_124.04_Bot1 | | 5819 | South wing. Destruction layer | H-P | | | | |
| 2014 | SN_124.05_Bot1 | | 5820 | South wing. Destruction layer | H-P | | | | |
| 2014 | SN_124.07_Bot1 | | 5821 | South wing. Destruction layer | H-P | | | | |
| 2014 | SN_124.08_Bot1 | | 5822 | South wing. Destruction layer | H-P | | | | |
| 2014 | SN_125.03_Bot1 | 125 | 5826 | South wing. Abandonment layer just above a soil. | H-P | | | | |
| 2014 | SN_125.03_Bot2 | | 5823 | | H-P | | | | |
| 2014 | SN_125.05_Bot1 | | 5844 | South wing. Ashy layer | 1 | | | | |
| 2014 | SN_128.02_Bot1 | 128 | 5825 | South wing. Destruction layer | H-P | | | | |
| 2014 | SN_129.03_Bot1 | 129 | 5826 | East wing. Accumulation of desiccated plant elements | H-P | | | | |
| 2014 | SN_129.05_Bot1 | | 5828 | East wing. Accumulation of desiccated plant elements | H-P | | | | |
| 2014 | SN_129.07_Bot1 | | 5829 | East wing. Accumulation of desiccated plant elements | H-P | | | | |
| 2014 | SN_130.06_Bot1 | 130 | 5846 | East wing. Filling of amphora | 0,5 | | | | |
| 2014 | SN_132.06_Bot1 | 132 | 5847 | East wing. Fireplace | 2 | | | | |
| 2014 | SN_132.08_Bot1 | | 5848 | East wing. Concentration of organic matter | 0,15 | | <i>Coprolites</i> | | |
| 2014 | SN_132.13_Bot1 | | 5849 | East wing. Concentration of organic matter | 0,15 | | | | |
| 2015 | SN_137.02_Bot1 | 137 | 9273 | East wing. Thick layer of charcoal across the entire room | 2 | | | | |
| 2015 | SN_137.02_Bot2 | | 9274 | | 1,5 | | | | |
| 2014 | SN_152.03_Bot1 | 152 | 5851 | Outside. Furnace discharge | 2 | | | | |
| 2014 | SN_152.06_Bot1 | | 5854 | Outside. Furnace discharge | 3 | | | | |
| 2014 | SN_403.06_Bot1 | 403 | 5852 | Sector 4. Ashy layer at the top of a furnace | 1 | | | | |
| 2014 | SN_403.06_Bot2 | | 5853 | | 3 | | | | |

Table 2. Charcoal analyses. Taxonomical identification and counting (ubiquity).

Volume (l)=volume of bulk sediment, in litres.

| Locus | 110.05 | 116.17 | 116.21 | 116.25 | 117.05 | 125.05 | 130.06 | 132.06 | 137.02 | 152.03 | 152.06 | 403.06 | |
|-------------------------------------|-------------|-------------|-------------|-------------|-------------|-------------|-------------|-------------|-------------|-------------|-------------|-------------|-------------|
| Sample | 110.05_Bot1 | 116.17_Bot1 | 116.21_Bot1 | 116.25_Bot1 | 117.05_Bot1 | 125.05_Bot1 | 130.06_Bot1 | 132.06_Bot1 | 137.02_Bot1 | 152.03_Bot1 | 152.06_Bot1 | 403.06_Bot1 | 403.06_Bot2 |
| Volume (l) | 2 | 2 | 2 | | 2 | 1 | 0,5 | 2 | 1,5 | 2 | 3 | 1 | 3 |
| Taxa | | | | | | | | | | | | | |
| <i>Acacia etbaica/tortilis</i> type | 47 | 47 | 46 | 48 | 50 | 43 | 45 | 47 | 50 | 49 | 49 | 11 | 10 |
| cf. <i>Acacia</i> sp. | | | 2 | | | | 2 | | | 1 | | | |
| cf. <i>Capparis decidua</i> | | 1 | | | | | | | | | | | |
| <i>Leptadenia pyrotechnica</i> | 2 | | | | | | | 1 | | | | | |
| <i>Tamarix</i> sp. | 1 | | | 1 | | | 1 | | | | | | |
| Angiosperm | | 1 | 1 | | | | | | | | | | |
| Bark | | 1 | 1 | 1 | | 6 | 3 | | | | | | |
| Undetermined | | 1 | | | | 1 | 2 | 2 | | | 1 | | |
| Sum | 50 | 51 | 50 | 50 | 50 | 50 | 53 | 50 | 50 | 50 | 50 | 11 | 10 |

Table 3. Resum of dendro-anthracological criteria (acacia charcoal only). See supplementary data 1 for details.

Nb=number of acacia fragments analysed; M.=mean; diam=diameter; H=hard; S=soft

| Sample | Nb | M. Length | Nb Bark | Nb Heart | Nb Tyloses | Nb Fungi Hyphae | Nb Radial cracks | Nb Vitrification | Nb diam | Consistence |
|----------------|----|-----------|---------|----------|------------|-----------------|------------------|------------------|---------|-------------|
| SN_110.05_Bot1 | 47 | 12 | 1 | 1 | 31 | 5 | 24 | 36 | 1 | 12 H / 35 S |
| SN_116.17_Bot1 | 47 | 12 | 7 | 7 | 1 | 1 | 25 | 10 | 10 | 4 H / 43 S |
| SN_116.21_Bot1 | 46 | 12 | 0 | 3 | 9 | 0 | 43 | 31 | 2 | 2 H / 44 S |
| SN_116.25_Bot1 | 49 | 13 | 2 | 5 | 2 | 10 | 25 | 19 | 1 | 16 H / 33 S |
| SN_117.05_Bot1 | 50 | 10 | 1 | 1 | 40 | 7 | 16 | 44 | 1 | 31 H / 19 S |
| SN_125.05_Bot1 | 43 | 9 | 0 | 0 | 30 | 6 | 3 | 31 | | 12 H / 31 S |
| SN_130.06_Bot1 | 45 | 9 | 6 | 5 | 30 | 6 | 32 | 16 | 6 | 9 H / 36 S |
| SN_132.06_Bot1 | 47 | 11 | 0 | 0 | 26 | 2 | 25 | 30 | | 6 H / 41 S |
| SN_137.02_Bot1 | 50 | 10 | 0 | 0 | 34 | 18 | 5 | 42 | | 31 H / 19 S |
| SN_152.03_Bot1 | 49 | 10 | 0 | 0 | 27 | 5 | 36 | 26 | | 4 H / 45 S |
| SN_152.06_Bot1 | 49 | 11 | 1 | 0 | 20 | 8 | 17 | 12 | | 8 H / 41 S |
| SN_403.06_Bot1 | 11 | 5 | 0 | 0 | 5 | 0 | 0 | 11 | | 7 H / 4 S |
| SN_403.06_Bot2 | 10 | 5 | 0 | 0 | 6 | 0 | 0 | 8 | | 4 H / 6 S |

Table 4. Analysis of processed and unprocessed desiccated wood. Taxonomical identification, description and counting.

Measures indicated in [] are diameter categories; Nb=number of items; Leng=Length; Wid=width; thick=thickness; heig=height; diam=diameter

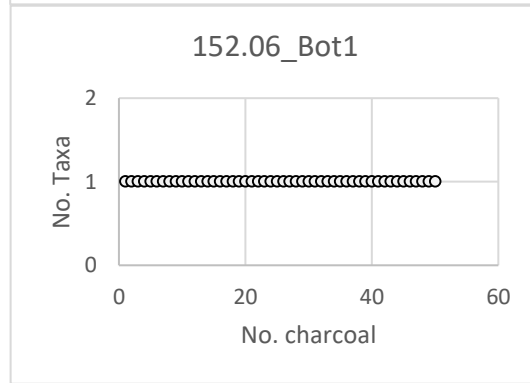
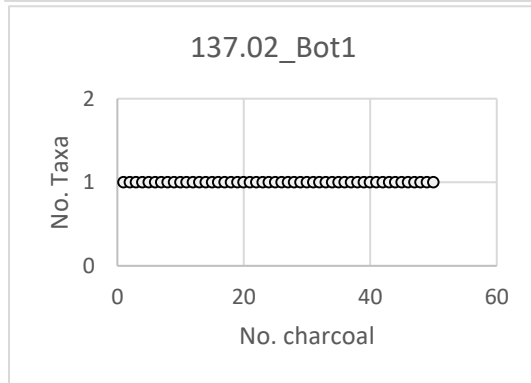
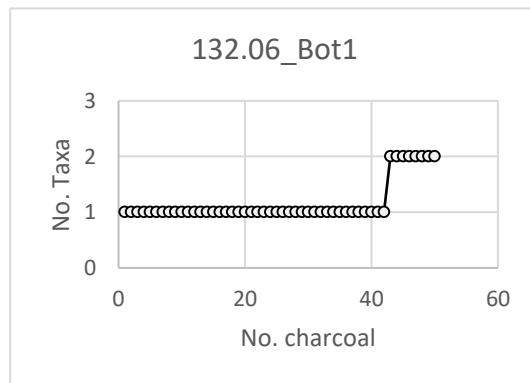
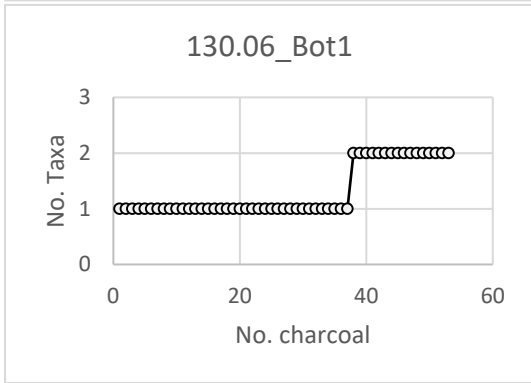
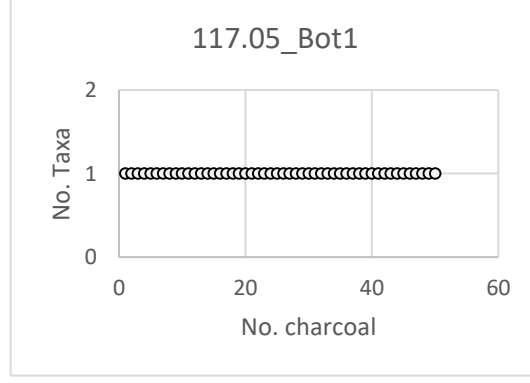
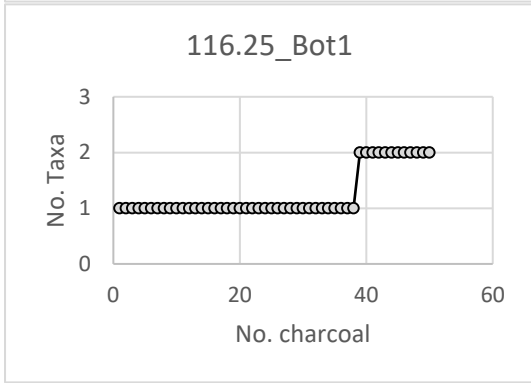
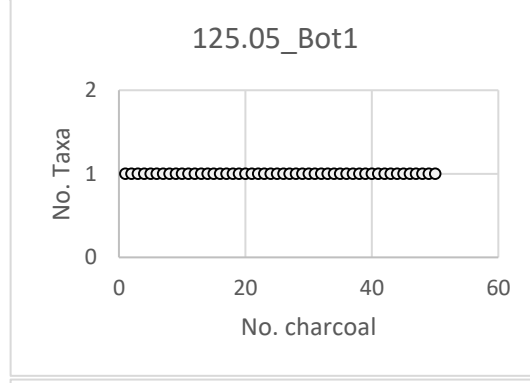
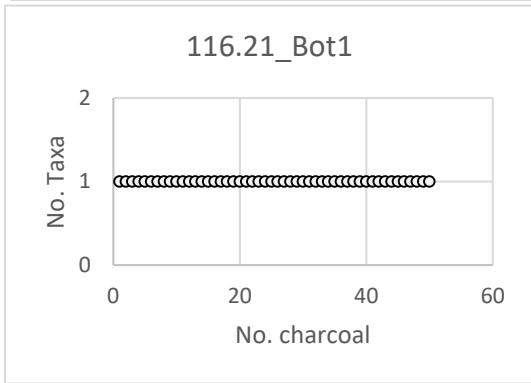
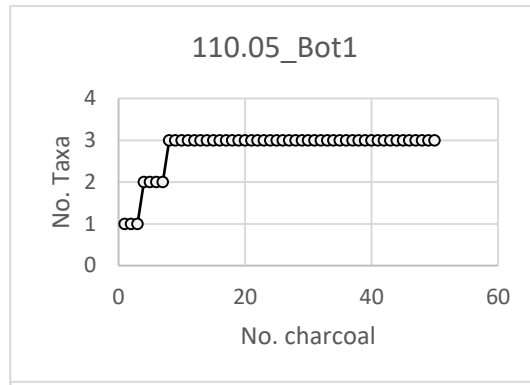
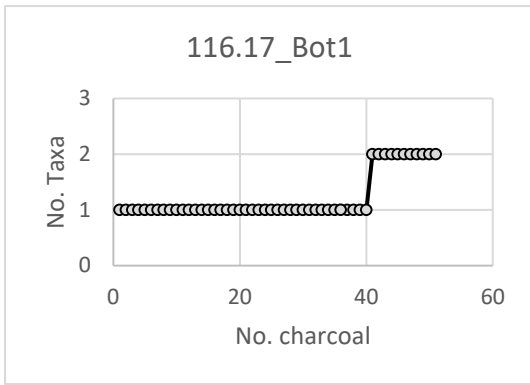
| Locus | Sample | Taxa | Type | Nb | Comments |
|--------|-------------|-----------------------------------------|----------------|----|-----------------------------------------------------------|
| 107.05 | 107.05_Bot1 | <i>Cupressus/Juniperus</i> | plank | 1 | leng= 100 mm, wid=20 mm, thick= 15 mm, 2 mortises |
| 110.03 | 110.03_Bot1 | <i>Leptadenia pyrotechnica</i> | twigs/branches | 2 | [15-25 mm] |
| 110.04 | 110.04_Bot1 | <i>Cupressus/Juniperus</i> | plank | 2 | thick=10 mm |
| 110.04 | 110.04_Bot1 | Indéterminable | bark | 1 | |
| 117.02 | 117.02_Bot1 | Indéterminable | bark | 1 | |
| 117.03 | 117.03_Bot1 | <i>Leptadenia pyrotechnica</i> | twigs/branches | 3 | [1-13 mm] |
| 119.02 | 119.02_Bot1 | <i>Acacia etbaica/tortilis</i> type | beam | 2 | Rectangular section, leng=120 mm, wid=140 mm, thick=60 mm |
| 120.05 | 120.05_Bot1 | cf. <i>Capparis decidua</i> | beam | 1 | Circular section, beam |
| 120.05 | 120.05_Bot1 | <i>Leptadenia pyrotechnica</i> | twigs/branches | 18 | [1-13 mm], [15-25 mm] |
| 121.04 | 121.04_Bot1 | Indéterminable | bark | 1 | |
| 121.04 | 121.04_Bot1 | <i>Leptadenia pyrotechnica</i> | twigs/branches | 8 | [1-13 mm], [15-25 mm] |
| 121.05 | 121.05_Bot1 | <i>Leptadenia pyrotechnica</i> | twigs/branches | 4 | [15-25 mm] |
| 121.07 | 121.07_Bot1 | <i>Tamarix sp.</i> | bowl | 1 | Bowl, heig=85 mm, diam=110 mm |
| 122.05 | 122.05_Bot1 | <i>Acacia etbaica/tortilis</i> type | beam | 1 | Rectangular section, leng=400 mm, wid=140 mm, thick=80 mm |
| 122.05 | 122.05_Bot1 | <i>Leptadenia pyrotechnica</i> | twigs/branches | 1 | [15-25 mm] |
| 122.05 | 122.05_Bot1 | Indéterminable | bark | 1 | |
| 122.07 | 122.07_Bot1 | <i>Leptadenia pyrotechnica</i> | twigs/branches | 11 | [1-13 mm] |
| 122.07 | 122.07_Bot1 | <i>Leptadenia pyrotechnica</i> | beam | 1 | Circular section, diam=52 mm |
| 122.07 | 122.07_Bot1 | Indéterminable | bark | 2 | |
| 123.06 | 123.06_Bot1 | cf. <i>Capparis decidua</i> | beam | 1 | Circular section, leng=70 mm, diam=58 mm |
| 123.07 | 123.07_Bot1 | Indéterminable | bark | 2 | |
| 124.02 | 124.02_Bot1 | cf. <i>Acacia etbaica/tortilis</i> type | twigs/branches | 1 | [1-13 mm] |
| 124.02 | 124.02_Bot1 | <i>Leptadenia pyrotechnica</i> | twigs/branches | 4 | [1-13 mm], [15-25 mm] |
| 124.02 | 124.02_Bot1 | <i>Tamarix sp.</i> | twigs/branches | 1 | [1-13 mm] |
| 124.02 | 124.02_Bot1 | Indéterminable | bark | 2 | |
| 124.03 | 124.03_Bot1 | <i>Leptadenia pyrotechnica</i> | twigs/branches | 2 | [1-13 mm] |
| 124.04 | 124.04_Bot1 | <i>Leptadenia pyrotechnica</i> | twigs/branches | 2 | [1-13 mm] |
| 124.05 | 124.05_Bot1 | <i>Leptadenia pyrotechnica</i> | twigs/branches | 4 | [1-13 mm] |
| 124.07 | 124.07_Bot1 | Indéterminable | bark | 1 | |
| 124.08 | 124.08_Bot1 | Indéterminable | bark | 2 | |
| 125.03 | 125.03_Bot1 | <i>Acacia etbaica/tortilis</i> type | door | 1 | Badly damaged door |
| 125.03 | 125.03_Bot2 | <i>Acacia etbaica/tortilis</i> type | beam | 1 | Rectangular section, leng=55 mm, wid=17 mm, thick=15 mm |
| 128.02 | 128.02_Bot1 | <i>Leptadenia pyrotechnica</i> | twigs/branches | 2 | [1-13 mm], [15-25 mm] |
| 129.03 | 129.03_Bot1 | <i>Cupressus/Juniperus</i> | plank | 1 | thick=10 mm |
| 129.03 | 129.03_Bot1 | <i>Leptadenia pyrotechnica</i> | twigs/branches | 2 | [15-25 mm] |
| 129.05 | 129.05_Bot1 | <i>Leptadenia pyrotechnica</i> | twigs/branches | 5 | [1-13 mm], [15-25 mm] |
| 129.07 | 129.07_Bot1 | <i>Leptadenia pyrotechnica</i> | twigs/branches | 3 | [1-13 mm] |
| 132.13 | 132.13_Bot1 | <i>Acacia etbaica/tortilis</i> type | twigs/branches | 50 | [15-25 mm] |
| 132.13 | 132.13_Bot1 | <i>Leptadenia pyrotechnica</i> | twigs/branches | 50 | [1-13], [15-25 mm] |

Table 5. Desiccated seed and fruit remains data. Taxonomical identification and counting.

Volume (l)=volume of bulk sediment, in litres; NRW=number of whole remains; NRfr=number of fragmented remains; MNI=minimal number of items.

| | Locus | 116.22 | 123.02 | | | | | | 125.05 | | | 130.06 | | | 132.08 |
|--------------------------------|------------------------|-------------|-------------|------|-----|-------------|------|-----|-------------|------|-----|-------------|------|-----|-------------|
| | Sample | 116.22_Bot1 | 123.02_Bot1 | | | 123.02_Bot2 | | | 125.05_Bot1 | | | 130.06_Bot1 | | | 132.08_Bot1 |
| | Volume (l) | 2 | | | | | | | 1 | | | 0,5 | | | 0,15 |
| | | NRw | NRw | NRfr | MNI | NRw | NRfr | MNI | NRw | NRfr | MNI | NRw | NRfr | MNI | NRw |
| Cultivated plants | Type of remains | | | | | | | | | | | | | | |
| <i>Hordeum vulgare</i> hulled | Caryopsis/ florete | | | | | 21 | 17 | 25 | 1 | | 1 | | | | |
| <i>Hordeum vulgare</i> hulled | Lemma basis | | | 2 | 1 | | | | | | | | | | |
| <i>Hordeum vulgare</i> hulled | Lemma, palea | | | | | | 17 | 3 | | 20 | 5 | | | | |
| <i>Hordeum vulgare</i> hulled | Rachis fgmt | | | | | | 1 | 1 | | | | | 2 | 2 | |
| <i>Triticum aestivum/durum</i> | Caryopsis | | | | | 1 | | 1 | 6 | | 6 | | | | |
| Cerealìa | Caryopsis | | | | | | | | | 1 | 1 | | | | |
| Cerealìa | Straw | | | | | | | | | 5 | 5 | | | | |
| <i>Lens culinaris</i> | Seed | | 10 | 1 | 10 | 2 | | 2 | | | | | | | |
| <i>Lens culinaris</i> | Cotyledon | | | | | | 2 | 1 | | 1 | 1 | | | | |
| <i>Lens culinaris</i> | Seed coat | | | 1 | | | | | | | | | | | |
| cf. <i>Phoenix dactylifera</i> | Leaflet | | | | | | | | | 4 | 1 | | | | |
| Wild plants | | | | | | | | | | | | | | | |
| <i>Acacia</i> sp. | Leaf | | | | | | | | 1 | | 1 | | | | |
| <i>Citrullus colocynthis</i> | Seed | | | | | | 1 | 1 | | | | | | | |
| cf. <i>Medicago</i> sp. | Fruit | | | | | | | | 1 | | 1 | | | | |
| <i>Panicum turgidum</i> | Caryopsis | | | | | | | | 1 | | 1 | | | | |
| cf. <i>Panicum turgidum</i> | Caryopsis | | | | | | | | 1 | | 1 | | | | |
| <i>Panicum turgidum</i> | Spikelet | | | | | | | | 1 | | 1 | | | | |
| cf. <i>Trifolium</i> sp. | Seed | | | | | | | | 3 | | 3 | | | | |
| Other plants | | | | | | | | | | | | | | | |
| Undetermined | Pericarp | | | | | | 1 | 1 | | | | | | | |
| Undetermined | Thorn | | | | | | | | 1 | | 1 | | | | |
| | Sum | | 10 | 4 | 11 | 24 | 39 | 35 | 16 | 31 | 29 | | 2 | 2 | |
| Non-plants items | | | | | | | | | | | | | | | |
| Coprolites ovicaprid | | | | | | | | | 1 | | | 1 | | | |
| Coprolites rodent | | 14 | 1 | | | | | | 2 | | | | | | 100 |

Supplementary data 1. Taxonomic saturation curves of charcoal samples (except 403.06_Bot1/Bot2)



Supplementary data 2. Details of dendro-anthracological criteria.

Dom=domestic; Stor=Storage; Smit=Smithy (see table 1 for details of contexts); N°=charcoal numbering; Heart=heartwood; Insect degra=Insect degradation; Vitrif=vitrification; diam=diameter; Consist=consistence; React w= reaction wood.

1=present and 0=absent for column “Bark”, “Heart”, “Thyles”, “Fungi Hyphae”, “Insect degra”, “Radial cracks”, “Vitrif” and “React w”

| Sample | Context | N° | Lenght (mm) | Bark | Heart | Thyles | Fungi Hyphae | Insect degra | Radial cracks | Vitrif | diam (mm) | Consist | React w |
|----------------|---------|----|-------------|------|-------|--------|--------------|--------------|---------------|--------|-----------|---------|---------|
| SN_110.05_Bot1 | DOM | 1 | 10 | 0 | 0 | 0 | 0 | 0 | 1 | 1 | | 0 | 0 |
| SN_110.05_Bot1 | DOM | 2 | 20 | 0 | 0 | 1 | 0 | 0 | 1 | 1 | | 1 | 0 |
| SN_110.05_Bot1 | DOM | 3 | 20 | 0 | 0 | 1 | 0 | 0 | 0 | 1 | | 1 | 0 |
| SN_110.05_Bot1 | DOM | 5 | 11 | 0 | 0 | 0 | 0 | 0 | 0 | 0 | | 1 | 0 |
| SN_110.05_Bot1 | DOM | 6 | 22 | 0 | 0 | 0 | 0 | 0 | 1 | 1 | | 0 | 0 |
| SN_110.05_Bot1 | DOM | 7 | 10 | 0 | 0 | 0 | 0 | 0 | 1 | 0 | | 0 | 0 |
| SN_110.05_Bot1 | DOM | 9 | 15 | 0 | 0 | 1 | 0 | 0 | 0 | 1 | | 1 | 0 |
| SN_110.05_Bot1 | DOM | 10 | 10 | 0 | 0 | 0 | 0 | 0 | 0 | 0 | | 1 | 0 |
| SN_110.05_Bot1 | DOM | 11 | 22 | 0 | 0 | 0 | 0 | 0 | 1 | 1 | | 0 | 0 |
| SN_110.05_Bot1 | DOM | 12 | 12 | 0 | 0 | 1 | 0 | 0 | 1 | 1 | | 0 | 0 |
| SN_110.05_Bot1 | DOM | 13 | 13 | 0 | 0 | 1 | 0 | 0 | 0 | 1 | | 1 | 0 |
| SN_110.05_Bot1 | DOM | 14 | 11 | 0 | 0 | 0 | 0 | 0 | 0 | 0 | | 0 | 0 |
| SN_110.05_Bot1 | DOM | 15 | 16 | 0 | 0 | 1 | 0 | 0 | 0 | 1 | | 1 | 0 |
| SN_110.05_Bot1 | DOM | 16 | 13 | 0 | 0 | 1 | 0 | 0 | 1 | 0 | | 0 | 0 |
| SN_110.05_Bot1 | DOM | 17 | 10 | 0 | 0 | 1 | 0 | 0 | 1 | 1 | | 0 | 0 |
| SN_110.05_Bot1 | DOM | 18 | 15 | 0 | 0 | 1 | 0 | 0 | 1 | 1 | | 0 | 0 |
| SN_110.05_Bot1 | DOM | 19 | 13 | 0 | 0 | 1 | 1 | 0 | 1 | 1 | | 0 | 0 |
| SN_110.05_Bot1 | DOM | 20 | 16 | 0 | 0 | 0 | 0 | 0 | 0 | 0 | | 0 | 0 |
| SN_110.05_Bot1 | DOM | 21 | 14 | 0 | 0 | 1 | 1 | 0 | 0 | 0 | | 0 | 0 |
| SN_110.05_Bot1 | DOM | 22 | 17 | 0 | 0 | 1 | 0 | 0 | 0 | 1 | | 1 | 0 |
| SN_110.05_Bot1 | DOM | 23 | 7 | 0 | 0 | 1 | 0 | 0 | 1 | 1 | | 1 | 0 |
| SN_110.05_Bot1 | DOM | 24 | 14 | 0 | 0 | 1 | 0 | 0 | 0 | 1 | | 0 | 0 |
| SN_110.05_Bot1 | DOM | 25 | 20 | 1 | 1 | 0 | 0 | 0 | 1 | 1 | 7 | 0 | 0 |
| SN_110.05_Bot1 | DOM | 26 | 9 | 0 | 0 | 1 | 0 | 0 | 0 | 1 | | 0 | 0 |
| SN_110.05_Bot1 | DOM | 27 | 18 | 0 | 0 | 0 | 0 | 0 | 0 | 1 | | 0 | 0 |
| SN_110.05_Bot1 | DOM | 28 | 8 | 0 | 0 | 1 | 0 | 0 | 0 | 1 | | 1 | 0 |
| SN_110.05_Bot1 | DOM | 29 | 12 | 0 | 0 | 0 | 0 | 0 | 0 | 0 | | 0 | 0 |
| SN_110.05_Bot1 | DOM | 30 | 12 | 0 | 0 | 0 | 0 | 0 | 1 | 0 | | 0 | 0 |
| SN_110.05_Bot1 | DOM | 31 | 10 | 0 | 0 | 1 | 0 | 0 | 0 | 1 | | 0 | 0 |
| SN_110.05_Bot1 | DOM | 32 | 11 | 0 | 0 | 1 | 0 | 0 | 0 | 1 | | 0 | 0 |
| SN_110.05_Bot1 | DOM | 33 | 13 | 0 | 0 | 1 | 0 | 0 | 1 | 1 | | 0 | 0 |
| SN_110.05_Bot1 | DOM | 34 | 11 | 0 | 0 | 0 | 0 | 0 | 0 | 0 | | 0 | 0 |
| SN_110.05_Bot1 | DOM | 35 | 16 | 0 | 0 | 0 | 0 | 0 | 0 | 1 | | 0 | 0 |
| SN_110.05_Bot1 | DOM | 36 | 6 | 0 | 0 | 0 | 0 | 0 | 1 | 1 | | 1 | 0 |
| SN_110.05_Bot1 | DOM | 37 | 5 | 0 | 0 | 1 | 1 | 0 | 1 | 1 | | 0 | 0 |
| SN_110.05_Bot1 | DOM | 38 | 11 | 0 | 0 | 1 | 0 | 0 | 1 | 1 | | 0 | 0 |
| SN_110.05_Bot1 | DOM | 39 | 10 | 0 | 0 | 1 | 0 | 0 | 1 | 1 | | 0 | 0 |
| SN_110.05_Bot1 | DOM | 40 | 18 | 0 | 0 | 1 | 0 | 0 | 0 | 1 | | 0 | 0 |
| SN_110.05_Bot1 | DOM | 41 | 7 | 0 | 0 | 1 | 0 | 0 | 1 | 1 | | 0 | 0 |
| SN_110.05_Bot1 | DOM | 42 | 7 | 0 | 0 | 1 | 0 | 0 | 1 | 1 | | 0 | 0 |
| SN_110.05_Bot1 | DOM | 43 | 7 | 0 | 0 | 1 | 0 | 0 | 0 | 1 | | 0 | 0 |
| SN_110.05_Bot1 | DOM | 45 | 11 | 0 | 0 | 1 | 1 | 0 | 0 | 1 | | 0 | 0 |

| | | | | | | | | | | | | | |
|----------------|-----|----|----|---|---|---|---|---|---|---|----|---|---|
| SN_116.17_Bot1 | DOM | 51 | 10 | 0 | 0 | 0 | 0 | 0 | 0 | 0 | | 0 | 0 |
| SN_116.21_Bot1 | DOM | 1 | 10 | 0 | 0 | 1 | 0 | 0 | 1 | 0 | | 0 | 0 |
| SN_116.21_Bot1 | DOM | 2 | 20 | 0 | 1 | 0 | 0 | 0 | 1 | 0 | | 0 | 0 |
| SN_116.21_Bot1 | DOM | 4 | 21 | 0 | 1 | 0 | 0 | 0 | 1 | 1 | 21 | 0 | 0 |
| SN_116.21_Bot1 | DOM | 5 | 13 | 0 | 0 | 0 | 0 | 0 | 1 | 0 | | 0 | 0 |
| SN_116.21_Bot1 | DOM | 6 | 11 | 0 | 0 | 0 | 0 | 0 | 1 | 0 | | 0 | 0 |
| SN_116.21_Bot1 | DOM | 7 | 13 | 0 | 0 | 0 | 0 | 0 | 1 | 1 | | 0 | 0 |
| SN_116.21_Bot1 | DOM | 8 | 8 | 0 | 0 | 1 | 0 | 0 | 1 | 0 | | 0 | 0 |
| SN_116.21_Bot1 | DOM | 9 | 16 | 0 | 0 | 1 | 0 | 0 | 1 | 1 | | 0 | 0 |
| SN_116.21_Bot1 | DOM | 10 | 17 | 0 | 0 | 1 | 0 | 0 | 1 | 1 | | 0 | 0 |
| SN_116.21_Bot1 | DOM | 11 | 8 | 0 | 0 | 0 | 0 | 0 | 1 | 1 | | 0 | 0 |
| SN_116.21_Bot1 | DOM | 12 | 17 | 0 | 0 | 0 | 0 | 0 | 1 | 1 | | 0 | 0 |
| SN_116.21_Bot1 | DOM | 13 | 18 | 0 | 0 | 0 | 0 | 0 | 1 | 1 | | 0 | 0 |
| SN_116.21_Bot1 | DOM | 14 | 13 | 0 | 0 | 0 | 0 | 0 | 1 | 1 | | 0 | 0 |
| SN_116.21_Bot1 | DOM | 15 | 9 | 0 | 1 | 0 | 0 | 0 | 1 | 1 | 9 | 0 | 0 |
| SN_116.21_Bot1 | DOM | 16 | 8 | 0 | 0 | 0 | 0 | 0 | 1 | 0 | | 0 | 0 |
| SN_116.21_Bot1 | DOM | 17 | 7 | 0 | 0 | 0 | 0 | 0 | 1 | 0 | | 0 | 0 |
| SN_116.21_Bot1 | DOM | 18 | 10 | 0 | 0 | 1 | 0 | 0 | 1 | 1 | | 0 | 0 |
| SN_116.21_Bot1 | DOM | 19 | 14 | 0 | 0 | 1 | 0 | 0 | 1 | 1 | | 0 | 0 |
| SN_116.21_Bot1 | DOM | 20 | 12 | 0 | 0 | 0 | 0 | 0 | 1 | 1 | | 0 | 0 |
| SN_116.21_Bot1 | DOM | 21 | 9 | 0 | 0 | 1 | 0 | 0 | 1 | 0 | | 0 | 0 |
| SN_116.21_Bot1 | DOM | 22 | 10 | 0 | 0 | 0 | 0 | 0 | 0 | 1 | | 0 | 0 |
| SN_116.21_Bot1 | DOM | 23 | 18 | 0 | 0 | 0 | 0 | 0 | 1 | 0 | | 0 | 0 |
| SN_116.21_Bot1 | DOM | 24 | 9 | 0 | 0 | 0 | 0 | 0 | 1 | 1 | | 0 | 0 |
| SN_116.21_Bot1 | DOM | 25 | 10 | 0 | 0 | 0 | 0 | 0 | 1 | 1 | | 0 | 0 |
| SN_116.21_Bot1 | DOM | 26 | 15 | 0 | 0 | 0 | 0 | 0 | 1 | 1 | | 0 | 0 |
| SN_116.21_Bot1 | DOM | 27 | 8 | 0 | 0 | 0 | 0 | 0 | 1 | 1 | | 1 | 0 |
| SN_116.21_Bot1 | DOM | 28 | 18 | 0 | 0 | 0 | 0 | 0 | 1 | 1 | | 0 | 0 |
| SN_116.21_Bot1 | DOM | 29 | 10 | 0 | 0 | 0 | 0 | 0 | 1 | 1 | | 1 | 0 |
| SN_116.21_Bot1 | DOM | 30 | 13 | 0 | 0 | 0 | 0 | 0 | 1 | 1 | | 0 | 0 |
| SN_116.21_Bot1 | DOM | 31 | 15 | 0 | 0 | 0 | 0 | 0 | 1 | 1 | | 0 | 0 |
| SN_116.21_Bot1 | DOM | 32 | 14 | 0 | 0 | 0 | 0 | 0 | 1 | 1 | | 0 | 0 |
| SN_116.21_Bot1 | DOM | 33 | 13 | 0 | 0 | 0 | 0 | 0 | 1 | 1 | | 0 | 0 |
| SN_116.21_Bot1 | DOM | 34 | 9 | 0 | 0 | 0 | 0 | 0 | 1 | 1 | | 0 | 0 |
| SN_116.21_Bot1 | DOM | 35 | 13 | 0 | 0 | 0 | 0 | 0 | 1 | 1 | | 0 | 0 |
| SN_116.21_Bot1 | DOM | 36 | 8 | 0 | 0 | 0 | 0 | 0 | 1 | 1 | | 0 | 0 |
| SN_116.21_Bot1 | DOM | 37 | 13 | 0 | 0 | 0 | 0 | 0 | 0 | 0 | | 0 | 0 |
| SN_116.21_Bot1 | DOM | 38 | 10 | 0 | 0 | 0 | 0 | 0 | 1 | 1 | | 0 | 0 |
| SN_116.21_Bot1 | DOM | 39 | 14 | 0 | 0 | 0 | 0 | 0 | 1 | 1 | | 0 | 0 |
| SN_116.21_Bot1 | DOM | 40 | 14 | 0 | 0 | 1 | 0 | 0 | 0 | 0 | | 0 | 0 |
| SN_116.21_Bot1 | DOM | 41 | 10 | 0 | 0 | 0 | 0 | 0 | 1 | 1 | | 0 | 0 |
| SN_116.21_Bot1 | DOM | 43 | 8 | 0 | 0 | 0 | 0 | 0 | 1 | 0 | | 0 | 0 |
| SN_116.21_Bot1 | DOM | 44 | 11 | 0 | 0 | 1 | 0 | 0 | 1 | 0 | | 0 | 0 |
| SN_116.21_Bot1 | DOM | 45 | 8 | 0 | 0 | 0 | 0 | 0 | 1 | 0 | | 0 | 0 |
| SN_116.21_Bot1 | DOM | 47 | 11 | 0 | 0 | 0 | 0 | 0 | 1 | 0 | | 0 | 0 |
| SN_116.21_Bot1 | DOM | 49 | 8 | 0 | 0 | 0 | 0 | 0 | 1 | 1 | | 0 | 0 |
| SN_116.21_Bot1 | DOM | 50 | 8 | 0 | 0 | 0 | 0 | 0 | 1 | 1 | | 0 | 0 |
| SN_116.25_Bot1 | DOM | 1 | 18 | 0 | 0 | 1 | 0 | 0 | 1 | 1 | | 1 | 0 |
| SN_116.25_Bot1 | DOM | 2 | 27 | 0 | 0 | 0 | 0 | 0 | 1 | 1 | | 1 | 0 |
| SN_116.25_Bot1 | DOM | 3 | 15 | 1 | 1 | 0 | 0 | 0 | 1 | 1 | 12 | 1 | 0 |
| SN_116.25_Bot1 | DOM | 4 | 6 | 0 | 0 | 0 | 1 | 0 | 0 | 1 | | 1 | 0 |

| | | | | | | | | | | | | | |
|----------------|-----|----|----|---|---|---|---|---|---|---|--|---|---|
| SN_116.25_Bot1 | DOM | 5 | 20 | 0 | 0 | 0 | 1 | 0 | 1 | 1 | | 1 | 0 |
| SN_116.25_Bot1 | DOM | 6 | 17 | 0 | 0 | 0 | 0 | 0 | 0 | 0 | | 1 | 0 |
| SN_116.25_Bot1 | DOM | 7 | 18 | 0 | 0 | 0 | 0 | 0 | 0 | 0 | | 1 | 0 |
| SN_116.25_Bot1 | DOM | 8 | 8 | 0 | 0 | 0 | 0 | 0 | 0 | 1 | | 1 | 0 |
| SN_116.25_Bot1 | DOM | 9 | 16 | 0 | 1 | 0 | 0 | 0 | 1 | 0 | | 1 | 0 |
| SN_116.25_Bot1 | DOM | 10 | 11 | 0 | 0 | 1 | 0 | 0 | 1 | 1 | | 0 | 0 |
| SN_116.25_Bot1 | DOM | 11 | 17 | 0 | 0 | 0 | 0 | 0 | 1 | 1 | | 1 | 0 |
| SN_116.25_Bot1 | DOM | 12 | 11 | 1 | 0 | 0 | 0 | 0 | 0 | 0 | | 0 | 0 |
| SN_116.25_Bot1 | DOM | 13 | 17 | 0 | 0 | 0 | 0 | 0 | 1 | 1 | | 1 | 0 |
| SN_116.25_Bot1 | DOM | 14 | 18 | 0 | 1 | 0 | 0 | 0 | 1 | 1 | | 0 | 0 |
| SN_116.25_Bot1 | DOM | 15 | 7 | 0 | 0 | 0 | 0 | 0 | 0 | 0 | | 0 | 0 |
| SN_116.25_Bot1 | DOM | 16 | 15 | 0 | 0 | 0 | 0 | 0 | 1 | 1 | | 1 | 0 |
| SN_116.25_Bot1 | DOM | 17 | 11 | 0 | 0 | 0 | 0 | 0 | 0 | 0 | | 0 | 0 |
| SN_116.25_Bot1 | DOM | 18 | 16 | 0 | 0 | 0 | 1 | 0 | 1 | 1 | | 0 | 0 |
| SN_116.25_Bot1 | DOM | 19 | 19 | 0 | 0 | 0 | 0 | 0 | 0 | 0 | | 1 | 0 |
| SN_116.25_Bot1 | DOM | 20 | 7 | 0 | 1 | 0 | 0 | 0 | 1 | 1 | | 0 | 0 |
| SN_116.25_Bot1 | DOM | 21 | 18 | 0 | 0 | 0 | 0 | 0 | 0 | 0 | | 0 | 0 |
| SN_116.25_Bot1 | DOM | 22 | 10 | 0 | 0 | 0 | 0 | 0 | 0 | 0 | | 0 | 0 |
| SN_116.25_Bot1 | DOM | 23 | 7 | 0 | 0 | 0 | 0 | 0 | 1 | 1 | | 0 | 0 |
| SN_116.25_Bot1 | DOM | 24 | 14 | 0 | 0 | 0 | 0 | 0 | 1 | 0 | | 0 | 0 |
| SN_116.25_Bot1 | DOM | 25 | 15 | 0 | 0 | 0 | 0 | 0 | 0 | 0 | | 0 | 0 |
| SN_116.25_Bot1 | DOM | 26 | 18 | 0 | 0 | 0 | 1 | 0 | 1 | 0 | | 0 | 0 |
| SN_116.25_Bot1 | DOM | 27 | 20 | 0 | 0 | 0 | 0 | 0 | 1 | 0 | | 0 | 0 |
| SN_116.25_Bot1 | DOM | 28 | 10 | 0 | 0 | 0 | 0 | 0 | 1 | 1 | | 0 | 0 |
| SN_116.25_Bot1 | DOM | 29 | 15 | 0 | 0 | 0 | 1 | 0 | 0 | 1 | | 0 | 0 |
| SN_116.25_Bot1 | DOM | 30 | 12 | 0 | 1 | 0 | 0 | 0 | 0 | 0 | | 0 | 0 |
| SN_116.25_Bot1 | DOM | 31 | 11 | 0 | 0 | 0 | 0 | 0 | 0 | 0 | | 0 | 0 |
| SN_116.25_Bot1 | DOM | 32 | 10 | 0 | 0 | 0 | 1 | 0 | 1 | 0 | | 0 | 0 |
| SN_116.25_Bot1 | DOM | 33 | 15 | 0 | 0 | 0 | 0 | 0 | 1 | 0 | | 1 | 0 |
| SN_116.25_Bot1 | DOM | 34 | 13 | 0 | 0 | 0 | 1 | 0 | 1 | 1 | | 0 | 0 |
| SN_116.25_Bot1 | DOM | 35 | 8 | 0 | 0 | 0 | 0 | 0 | 1 | 0 | | 0 | 0 |
| SN_116.25_Bot1 | DOM | 36 | 17 | 0 | 0 | 0 | 1 | 0 | 0 | 0 | | 0 | 0 |
| SN_116.25_Bot1 | DOM | 37 | 11 | 0 | 0 | 0 | 0 | 0 | 1 | 0 | | 0 | 0 |
| SN_116.25_Bot1 | DOM | 38 | 11 | 0 | 0 | 0 | 0 | 0 | 0 | 0 | | 0 | 0 |
| SN_116.25_Bot1 | DOM | 40 | 9 | 0 | 0 | 0 | 0 | 0 | 0 | 0 | | 0 | 0 |
| SN_116.25_Bot1 | DOM | 41 | 12 | 0 | 0 | 0 | 1 | 0 | 0 | 0 | | 1 | 0 |
| SN_116.25_Bot1 | DOM | 42 | 12 | 0 | 0 | 0 | 0 | 0 | 0 | 0 | | 0 | 0 |
| SN_116.25_Bot1 | DOM | 43 | 12 | 0 | 0 | 0 | 0 | 0 | 0 | 0 | | 0 | 0 |
| SN_116.25_Bot1 | DOM | 44 | 8 | 0 | 0 | 0 | 0 | 0 | 1 | 1 | | 0 | 0 |
| SN_116.25_Bot1 | DOM | 45 | 10 | 0 | 0 | 0 | 1 | 0 | 0 | 0 | | 0 | 0 |
| SN_116.25_Bot1 | DOM | 46 | 10 | 0 | 0 | 0 | 0 | 0 | 0 | 0 | | 0 | 0 |
| SN_116.25_Bot1 | DOM | 47 | 9 | 0 | 0 | 0 | 0 | 0 | 1 | 1 | | 0 | 0 |
| SN_116.25_Bot1 | DOM | 48 | 10 | 0 | 0 | 0 | 0 | 0 | 0 | 0 | | 1 | 0 |
| SN_116.25_Bot1 | DOM | 49 | 10 | 0 | 0 | 0 | 0 | 0 | 0 | 0 | | 0 | 0 |
| SN_116.25_Bot1 | DOM | 50 | 12 | 0 | 0 | 0 | 0 | 0 | 1 | 0 | | 0 | 0 |
| SN_117.05_Bot1 | DOM | 1 | 55 | 0 | 0 | 1 | 1 | 0 | 0 | 1 | | 1 | 0 |
| SN_117.05_Bot1 | DOM | 2 | 19 | 0 | 0 | 0 | 0 | 0 | 1 | 1 | | 1 | 0 |
| SN_117.05_Bot1 | DOM | 3 | 12 | 0 | 0 | 0 | 0 | 0 | 0 | 1 | | 0 | 0 |
| SN_117.05_Bot1 | DOM | 4 | 19 | 0 | 0 | 1 | 0 | 0 | 0 | 1 | | 1 | 0 |
| SN_117.05_Bot1 | DOM | 5 | 8 | 0 | 0 | 0 | 0 | 0 | 0 | 1 | | 1 | 0 |
| SN_117.05_Bot1 | DOM | 6 | 13 | 0 | 0 | 1 | 0 | 0 | 0 | 1 | | 1 | 0 |

| | | | | | | | | | | | | | |
|----------------|-----|----|----|---|---|---|---|---|---|---|---|---|---|
| SN_117.05_Bot1 | DOM | 7 | 9 | 0 | 0 | 1 | 0 | 0 | 0 | 1 | | 0 | 0 |
| SN_117.05_Bot1 | DOM | 8 | 8 | 0 | 0 | 1 | 0 | 0 | 0 | 1 | | 1 | 0 |
| SN_117.05_Bot1 | DOM | 9 | 7 | 0 | 0 | 0 | 0 | 0 | 0 | 0 | | 0 | 0 |
| SN_117.05_Bot1 | DOM | 10 | 5 | 0 | 0 | 1 | 0 | 0 | 0 | 0 | | 1 | 0 |
| SN_117.05_Bot1 | DOM | 11 | 13 | 0 | 0 | 1 | 0 | 0 | 0 | 1 | | 0 | 0 |
| SN_117.05_Bot1 | DOM | 12 | 10 | 0 | 0 | 1 | 0 | 0 | 0 | 1 | | 0 | 0 |
| SN_117.05_Bot1 | DOM | 13 | 4 | 0 | 0 | 0 | 0 | 0 | 0 | 1 | | 1 | 0 |
| SN_117.05_Bot1 | DOM | 14 | 12 | 0 | 0 | 0 | 1 | 0 | 0 | 1 | | 1 | 0 |
| SN_117.05_Bot1 | DOM | 15 | 11 | 1 | 0 | 0 | 0 | 0 | 0 | 1 | | 0 | 0 |
| SN_117.05_Bot1 | DOM | 16 | 8 | 0 | 0 | 0 | 0 | 0 | 1 | 1 | | 0 | 0 |
| SN_117.05_Bot1 | DOM | 17 | 10 | 0 | 0 | 1 | 0 | 0 | 0 | 1 | | 1 | 0 |
| SN_117.05_Bot1 | DOM | 18 | 16 | 0 | 0 | 1 | 0 | 0 | 1 | 1 | | 0 | 0 |
| SN_117.05_Bot1 | DOM | 19 | 14 | 0 | 0 | 0 | 0 | 0 | 0 | 1 | | 0 | 0 |
| SN_117.05_Bot1 | DOM | 20 | 11 | 0 | 0 | 1 | 0 | 0 | 0 | 1 | | 1 | 0 |
| SN_117.05_Bot1 | DOM | 21 | 6 | 0 | 0 | 1 | 1 | 0 | 1 | 1 | | 0 | 0 |
| SN_117.05_Bot1 | DOM | 22 | 8 | 0 | 1 | 1 | 0 | 0 | 0 | 1 | 8 | 1 | 0 |
| SN_117.05_Bot1 | DOM | 23 | 18 | 0 | 0 | 0 | 0 | 0 | 1 | 1 | | 0 | 0 |
| SN_117.05_Bot1 | DOM | 24 | 8 | 0 | 0 | 1 | 1 | 0 | 0 | 1 | | 1 | 0 |
| SN_117.05_Bot1 | DOM | 25 | 12 | 0 | 0 | 1 | 0 | 0 | 1 | 1 | | 0 | 0 |
| SN_117.05_Bot1 | DOM | 26 | 8 | 0 | 0 | 1 | 0 | 0 | 0 | 1 | | 1 | 0 |
| SN_117.05_Bot1 | DOM | 27 | 8 | 0 | 0 | 1 | 0 | 0 | 1 | 1 | | 1 | 0 |
| SN_117.05_Bot1 | DOM | 28 | 10 | 0 | 0 | 1 | 1 | 0 | 0 | 1 | | 1 | 0 |
| SN_117.05_Bot1 | DOM | 29 | 7 | 0 | 0 | 1 | 0 | 0 | 0 | 1 | | 1 | 0 |
| SN_117.05_Bot1 | DOM | 30 | 7 | 0 | 0 | 1 | 1 | 0 | 0 | 0 | | 1 | 0 |
| SN_117.05_Bot1 | DOM | 31 | 8 | 0 | 0 | 1 | 0 | 0 | 1 | 1 | | 1 | 0 |
| SN_117.05_Bot1 | DOM | 32 | 7 | 0 | 0 | 1 | 0 | 0 | 0 | 1 | | 1 | 0 |
| SN_117.05_Bot1 | DOM | 33 | 12 | 0 | 0 | 1 | 0 | 0 | 1 | 1 | | 1 | 0 |
| SN_117.05_Bot1 | DOM | 34 | 10 | 0 | 0 | 1 | 0 | 0 | 0 | 1 | | 0 | 0 |
| SN_117.05_Bot1 | DOM | 35 | 7 | 0 | 0 | 1 | 0 | 0 | 1 | 0 | | 0 | 0 |
| SN_117.05_Bot1 | DOM | 36 | 12 | 0 | 0 | 1 | 0 | 0 | 0 | 0 | | 0 | 0 |
| SN_117.05_Bot1 | DOM | 37 | 7 | 0 | 0 | 1 | 0 | 0 | 0 | 1 | | 0 | 0 |
| SN_117.05_Bot1 | DOM | 38 | 8 | 0 | 0 | 1 | 0 | 0 | 0 | 1 | | 0 | 0 |
| SN_117.05_Bot1 | DOM | 39 | 4 | 0 | 0 | 1 | 0 | 0 | 0 | 1 | | 0 | 0 |
| SN_117.05_Bot1 | DOM | 40 | 12 | 0 | 0 | 1 | 0 | 0 | 1 | 1 | | 1 | 0 |
| SN_117.05_Bot1 | DOM | 41 | 10 | 0 | 0 | 1 | 0 | 0 | 1 | 1 | | 1 | 0 |
| SN_117.05_Bot1 | DOM | 42 | 11 | 0 | 0 | 1 | 0 | 0 | 1 | 1 | | 1 | 0 |
| SN_117.05_Bot1 | DOM | 43 | 12 | 0 | 0 | 1 | 0 | 0 | 0 | 1 | | 1 | 0 |
| SN_117.05_Bot1 | DOM | 44 | 4 | 0 | 0 | 1 | 0 | 0 | 0 | 1 | | 1 | 0 |
| SN_117.05_Bot1 | DOM | 45 | 7 | 0 | 0 | 1 | 1 | 0 | 0 | 1 | | 1 | 0 |
| SN_117.05_Bot1 | DOM | 46 | 4 | 0 | 0 | 1 | 0 | 0 | 1 | 1 | | 1 | 0 |
| SN_117.05_Bot1 | DOM | 47 | 4 | 0 | 0 | 1 | 0 | 0 | 0 | 1 | | 1 | 0 |
| SN_117.05_Bot1 | DOM | 48 | 8 | 0 | 0 | 1 | 0 | 0 | 0 | 0 | | 1 | 0 |
| SN_117.05_Bot1 | DOM | 49 | 10 | 0 | 0 | 1 | 0 | 0 | 1 | 1 | | 1 | 0 |
| SN_117.05_Bot1 | DOM | 50 | 7 | 0 | 0 | 1 | 0 | 0 | 1 | 1 | | 0 | 0 |
| SN_125.05_Bot1 | DOM | 2 | 10 | 0 | 0 | 1 | 0 | 0 | 0 | 0 | | 0 | 0 |
| SN_125.05_Bot1 | DOM | 3 | 13 | 0 | 0 | 1 | 0 | 0 | 0 | 1 | | 0 | 0 |
| SN_125.05_Bot1 | DOM | 4 | 15 | 0 | 0 | 1 | 0 | 0 | 0 | 1 | | 0 | 0 |
| SN_125.05_Bot1 | DOM | 5 | 9 | 0 | 0 | 1 | 0 | 0 | 0 | 1 | | 0 | 0 |
| SN_125.05_Bot1 | DOM | 6 | 12 | 0 | 0 | 1 | 0 | 0 | 0 | 1 | | 1 | 0 |
| SN_125.05_Bot1 | DOM | 7 | 15 | 0 | 0 | 1 | 0 | 0 | 0 | 1 | | 1 | 0 |
| SN_125.05_Bot1 | DOM | 8 | 5 | 0 | 0 | 1 | 0 | 0 | 0 | 0 | | 0 | 0 |

| | | | | | | | | | | | | | |
|----------------|-----|----|----|---|---|---|---|---|---|---|---|---|---|
| SN_125.05_Bot1 | DOM | 9 | 6 | 0 | 0 | 1 | 0 | 0 | 0 | 1 | | 1 | 0 |
| SN_125.05_Bot1 | DOM | 10 | 10 | 0 | 0 | 1 | 0 | 0 | 0 | 1 | | 1 | 0 |
| SN_125.05_Bot1 | DOM | 11 | 8 | 0 | 0 | 0 | 0 | 0 | 0 | 1 | | 0 | 0 |
| SN_125.05_Bot1 | DOM | 13 | 7 | 0 | 0 | 1 | 0 | 0 | 0 | 1 | | 0 | 0 |
| SN_125.05_Bot1 | DOM | 14 | 9 | 0 | 0 | 0 | 1 | 0 | 0 | 1 | | 0 | 0 |
| SN_125.05_Bot1 | DOM | 15 | 17 | 0 | 0 | 0 | 0 | 0 | 0 | 0 | | 0 | 0 |
| SN_125.05_Bot1 | DOM | 16 | 10 | 0 | 0 | 1 | 0 | 0 | 0 | 1 | | 0 | 0 |
| SN_125.05_Bot1 | DOM | 17 | 10 | 0 | 0 | 1 | 1 | 0 | 0 | 1 | | 0 | 0 |
| SN_125.05_Bot1 | DOM | 18 | 10 | 0 | 0 | 1 | 0 | 0 | 0 | 1 | | 1 | 0 |
| SN_125.05_Bot1 | DOM | 19 | 11 | 0 | 0 | 0 | 0 | 0 | 0 | 0 | | 1 | 0 |
| SN_125.05_Bot1 | DOM | 20 | 8 | 0 | 0 | 0 | 0 | 0 | 0 | 1 | | 1 | 0 |
| SN_125.05_Bot1 | DOM | 21 | 20 | 0 | 0 | 0 | 0 | 0 | 0 | 0 | | 1 | 0 |
| SN_125.05_Bot1 | DOM | 23 | 13 | 0 | 0 | 0 | 0 | 0 | 0 | 0 | | 0 | 0 |
| SN_125.05_Bot1 | DOM | 24 | 6 | 0 | 0 | 1 | 0 | 0 | 0 | 1 | | 0 | 0 |
| SN_125.05_Bot1 | DOM | 25 | 12 | 0 | 0 | 0 | 0 | 0 | 0 | 1 | | 1 | 0 |
| SN_125.05_Bot1 | DOM | 26 | 10 | 0 | 0 | 1 | 0 | 0 | 0 | 1 | | 0 | 0 |
| SN_125.05_Bot1 | DOM | 27 | 12 | 0 | 0 | 1 | 0 | 0 | 0 | 1 | | 1 | 0 |
| SN_125.05_Bot1 | DOM | 29 | 9 | 0 | 0 | 0 | 0 | 0 | 0 | 1 | | 1 | 0 |
| SN_125.05_Bot1 | DOM | 31 | 8 | 0 | 0 | 0 | 0 | 0 | 0 | 1 | | 0 | 0 |
| SN_125.05_Bot1 | DOM | 33 | 11 | 0 | 0 | 1 | 0 | 0 | 1 | 1 | | 0 | 0 |
| SN_125.05_Bot1 | DOM | 34 | 10 | 0 | 0 | 1 | 0 | 0 | 0 | 1 | | 0 | 0 |
| SN_125.05_Bot1 | DOM | 35 | 5 | 0 | 0 | 1 | 0 | 0 | 0 | 1 | | 0 | 0 |
| SN_125.05_Bot1 | DOM | 36 | 8 | 0 | 0 | 1 | 0 | 0 | 0 | 0 | | 0 | 0 |
| SN_125.05_Bot1 | DOM | 37 | 4 | 0 | 0 | 1 | 1 | 0 | 0 | 1 | | 0 | 0 |
| SN_125.05_Bot1 | DOM | 38 | 8 | 0 | 0 | 0 | 0 | 0 | 0 | 1 | | 0 | 0 |
| SN_125.05_Bot1 | DOM | 39 | 8 | 0 | 0 | 1 | 0 | 0 | 0 | 1 | | 0 | 0 |
| SN_125.05_Bot1 | DOM | 41 | 5 | 0 | 0 | 0 | 0 | 0 | 1 | 1 | | 0 | 0 |
| SN_125.05_Bot1 | DOM | 42 | 4 | 0 | 0 | 1 | 1 | 0 | 0 | 0 | | 0 | 0 |
| SN_125.05_Bot1 | DOM | 43 | 11 | 0 | 0 | 1 | 0 | 0 | 0 | 0 | | 0 | 0 |
| SN_125.05_Bot1 | DOM | 44 | 5 | 0 | 0 | 1 | 1 | 0 | 0 | 1 | | 0 | 0 |
| SN_125.05_Bot1 | DOM | 45 | 8 | 0 | 0 | 1 | 0 | 0 | 0 | 1 | | 0 | 0 |
| SN_125.05_Bot1 | DOM | 46 | 7 | 0 | 0 | 1 | 0 | 0 | 0 | 1 | | 0 | 0 |
| SN_125.05_Bot1 | DOM | 47 | 7 | 0 | 0 | 1 | 0 | 0 | 0 | 1 | | 0 | 0 |
| SN_125.05_Bot1 | DOM | 48 | 4 | 0 | 0 | 1 | 0 | 0 | 0 | 0 | | 0 | 0 |
| SN_125.05_Bot1 | DOM | 49 | 5 | 0 | 0 | 0 | 1 | 0 | 0 | 0 | | 1 | 0 |
| SN_125.05_Bot1 | DOM | 50 | 4 | 0 | 0 | 1 | 0 | 0 | 1 | 0 | | 0 | 0 |
| SN_130.06_Bot1 | DOM | 1 | 13 | 0 | 0 | 1 | 0 | 0 | 1 | 1 | | 0 | 0 |
| SN_130.06_Bot1 | DOM | 2 | 18 | 0 | 0 | 1 | 1 | 0 | 1 | 0 | | 0 | 0 |
| SN_130.06_Bot1 | DOM | 3 | 15 | 0 | 0 | 1 | 0 | 0 | 1 | 0 | | 0 | 0 |
| SN_130.06_Bot1 | DOM | 5 | 9 | 0 | 0 | 1 | 1 | 0 | 1 | 0 | | 0 | 0 |
| SN_130.06_Bot1 | DOM | 6 | 4 | 0 | 0 | 1 | 0 | 0 | 1 | 0 | | 0 | 0 |
| SN_130.06_Bot1 | DOM | 7 | 10 | 0 | 0 | 1 | 0 | 0 | 1 | 1 | | 1 | 0 |
| SN_130.06_Bot1 | DOM | 8 | 10 | 1 | 1 | 0 | 0 | 0 | 0 | 0 | 5 | 0 | 0 |
| SN_130.06_Bot1 | DOM | 9 | 9 | 0 | 0 | 1 | 1 | 0 | 1 | 0 | | 0 | 0 |
| SN_130.06_Bot1 | DOM | 10 | 8 | 0 | 0 | 1 | 0 | 0 | 1 | 0 | | 0 | 0 |
| SN_130.06_Bot1 | DOM | 11 | 8 | 0 | 0 | 1 | 0 | 0 | 0 | 1 | | 1 | 0 |
| SN_130.06_Bot1 | DOM | 12 | 10 | 0 | 0 | 1 | 0 | 0 | 1 | 1 | | 1 | 0 |
| SN_130.06_Bot1 | DOM | 13 | 8 | 0 | 0 | 1 | 0 | 0 | 1 | 0 | | 0 | 0 |
| SN_130.06_Bot1 | DOM | 14 | 13 | 0 | 0 | 0 | 0 | 0 | 1 | 0 | | 0 | 0 |
| SN_130.06_Bot1 | DOM | 15 | 15 | 0 | 0 | 0 | 0 | 0 | 1 | 0 | | 0 | 0 |
| SN_130.06_Bot1 | DOM | 16 | 11 | 0 | 0 | 1 | 0 | 0 | 1 | 1 | | 0 | 0 |

| | | | | | | | | | | | | | |
|----------------|-----|-------|----|---|---|---|---|---|---|---|---|---|---|
| SN_130.06_Bot1 | DOM | 17 | 9 | 0 | 0 | 1 | 0 | 0 | 1 | 1 | | 1 | 0 |
| SN_130.06_Bot1 | DOM | 18 | 5 | 0 | 0 | 0 | 0 | 0 | 0 | 0 | | 0 | 0 |
| SN_130.06_Bot1 | DOM | 19 | 12 | 0 | 0 | 1 | 0 | 0 | 1 | 0 | | 0 | 0 |
| SN_130.06_Bot1 | DOM | 20 | 8 | 0 | 0 | 0 | 1 | 0 | 1 | 0 | | 0 | 0 |
| SN_130.06_Bot1 | DOM | 21 | 12 | 0 | 0 | 1 | 0 | 0 | 1 | 1 | | 0 | 0 |
| SN_130.06_Bot1 | DOM | 23 | 5 | 0 | 0 | 1 | 0 | 0 | 0 | 0 | | 0 | 0 |
| SN_130.06_Bot1 | DOM | 24 | 8 | 0 | 0 | 0 | 0 | 0 | 0 | 1 | | 1 | 0 |
| SN_130.06_Bot1 | DOM | 25 | 5 | 0 | 0 | 1 | 0 | 0 | 0 | 0 | | 0 | 0 |
| SN_130.06_Bot1 | DOM | 28 | 9 | 0 | 0 | 1 | 0 | 0 | 0 | 1 | | 1 | 0 |
| SN_130.06_Bot1 | DOM | 29 | 10 | 0 | 0 | 0 | 0 | 0 | 1 | 1 | | 1 | 0 |
| SN_130.06_Bot1 | DOM | 30 | 5 | 0 | 0 | 1 | 0 | 0 | 1 | 0 | 5 | 0 | 0 |
| SN_130.06_Bot1 | DOM | 31 | 5 | 0 | 0 | 1 | 0 | 0 | 1 | 0 | | 1 | 0 |
| SN_130.06_Bot1 | DOM | 32 | 13 | 0 | 0 | 1 | 0 | 0 | 1 | 1 | | 0 | 0 |
| SN_130.06_Bot1 | DOM | 34 | 10 | 0 | 0 | 1 | 0 | 0 | 1 | 1 | | 0 | 0 |
| SN_130.06_Bot1 | DOM | 37 | 12 | 0 | 0 | 0 | 0 | 0 | 0 | 0 | | 0 | 0 |
| SN_130.06_Bot1 | DOM | 38 | 9 | 1 | 0 | 0 | 0 | 0 | 0 | 0 | | 0 | 0 |
| SN_130.06_Bot1 | DOM | 39 | 12 | 1 | 1 | 0 | 0 | 0 | 0 | 0 | 1 | 0 | 0 |
| SN_130.06_Bot1 | DOM | 40 | 6 | 0 | 0 | 0 | 0 | 0 | 1 | 0 | | 0 | 0 |
| SN_130.06_Bot1 | DOM | 41 | 5 | 0 | 0 | 1 | 0 | 0 | 1 | 1 | | 1 | 0 |
| SN_130.06_Bot1 | DOM | 42 | 4 | 0 | 0 | 0 | 1 | 0 | 1 | 0 | | 0 | 0 |
| SN_130.06_Bot1 | DOM | 43 | 6 | 1 | 1 | 0 | 0 | 0 | 0 | 0 | 1 | 0 | 0 |
| SN_130.06_Bot1 | DOM | 44 | 8 | 0 | 0 | 1 | 0 | 0 | 1 | 0 | | 0 | 0 |
| SN_130.06_Bot1 | DOM | 45 | 15 | 1 | 1 | 0 | 0 | 0 | 0 | 0 | 1 | 0 | 0 |
| SN_130.06_Bot1 | DOM | 46 | 7 | 0 | 0 | 1 | 0 | 0 | 1 | 0 | | 0 | 0 |
| SN_130.06_Bot1 | DOM | 48 | 8 | 1 | 1 | 0 | 0 | 0 | 0 | 0 | 1 | 0 | 0 |
| SN_130.06_Bot1 | DOM | 49 | 7 | 0 | 0 | 1 | 0 | 0 | 1 | 1 | | 0 | 0 |
| SN_130.06_Bot1 | DOM | 50 | 9 | 0 | 0 | 1 | 0 | 0 | 1 | 0 | | 0 | 0 |
| SN_130.06_Bot1 | DOM | 15BIS | 18 | 0 | 0 | 1 | 1 | 0 | 1 | 0 | | 0 | 0 |
| SN_130.06_Bot1 | DOM | 16BIS | 4 | 0 | 0 | 1 | 0 | 0 | 1 | 1 | | 0 | 0 |
| SN_130.06_Bot1 | DOM | 17BIS | 9 | 0 | 0 | 1 | 0 | 0 | 1 | 1 | | 0 | 0 |
| SN_132.06_Bot1 | DOM | 1 | 35 | 0 | 0 | 0 | 0 | 0 | 0 | 0 | | 0 | 0 |
| SN_132.06_Bot1 | DOM | 2 | 20 | 0 | 0 | 1 | 0 | 0 | 1 | 1 | | 0 | 0 |
| SN_132.06_Bot1 | DOM | 3 | 10 | 0 | 0 | 1 | 0 | 0 | 1 | 1 | | 0 | 0 |
| SN_132.06_Bot1 | DOM | 4 | 18 | 0 | 0 | 0 | 0 | 0 | 0 | 0 | | 0 | 0 |
| SN_132.06_Bot1 | DOM | 5 | 18 | 0 | 0 | 1 | 0 | 0 | 1 | 1 | | 1 | 0 |
| SN_132.06_Bot1 | DOM | 6 | 3 | 0 | 0 | 1 | 0 | 0 | 0 | 1 | | 0 | 0 |
| SN_132.06_Bot1 | DOM | 7 | 13 | 0 | 0 | 1 | 0 | 0 | 0 | 0 | | 0 | 0 |
| SN_132.06_Bot1 | DOM | 8 | 18 | 0 | 0 | 0 | 0 | 0 | 1 | 1 | | 0 | 0 |
| SN_132.06_Bot1 | DOM | 9 | 13 | 0 | 0 | 1 | 0 | 0 | 1 | 1 | | 0 | 0 |
| SN_132.06_Bot1 | DOM | 10 | 13 | 0 | 0 | 0 | 0 | 0 | 0 | 1 | | 0 | 0 |
| SN_132.06_Bot1 | DOM | 11 | 14 | 0 | 0 | 0 | 0 | 0 | 1 | 0 | | 0 | 0 |
| SN_132.06_Bot1 | DOM | 12 | 16 | 0 | 0 | 0 | 0 | 0 | 1 | 1 | | 0 | 0 |
| SN_132.06_Bot1 | DOM | 13 | 12 | 0 | 0 | 0 | 0 | 0 | 1 | 0 | | 0 | 0 |
| SN_132.06_Bot1 | DOM | 14 | 10 | 0 | 0 | 0 | 0 | 0 | 1 | 1 | | 0 | 0 |
| SN_132.06_Bot1 | DOM | 15 | 10 | 0 | 0 | 0 | 0 | 0 | 1 | 1 | | 0 | 0 |
| SN_132.06_Bot1 | DOM | 16 | 10 | 0 | 0 | 1 | 0 | 0 | 0 | 0 | | 1 | 0 |
| SN_132.06_Bot1 | DOM | 17 | 16 | 0 | 0 | 1 | 0 | 0 | 0 | 1 | | 0 | 0 |
| SN_132.06_Bot1 | DOM | 18 | 18 | 0 | 0 | 0 | 0 | 0 | 0 | 0 | | 0 | 0 |
| SN_132.06_Bot1 | DOM | 19 | 11 | 0 | 0 | 0 | 0 | 0 | 1 | 0 | | 0 | 0 |
| SN_132.06_Bot1 | DOM | 20 | 14 | 0 | 0 | 1 | 0 | 0 | 0 | 0 | | 0 | 0 |
| SN_132.06_Bot1 | DOM | 21 | 11 | 0 | 0 | 1 | 1 | 0 | 0 | 1 | | 0 | 0 |

| | | | | | | | | | | | | | |
|----------------|------|----|----|---|---|---|---|---|---|---|---|---|---|
| SN_132.06_Bot1 | DOM | 22 | 16 | 0 | 0 | 1 | 0 | 0 | 0 | 0 | 0 | 0 | 0 |
| SN_132.06_Bot1 | DOM | 23 | 12 | 0 | 0 | 0 | 0 | 0 | 1 | 1 | 0 | 0 | 0 |
| SN_132.06_Bot1 | DOM | 24 | 10 | 0 | 0 | 1 | 0 | 0 | 0 | 1 | 0 | 0 | 0 |
| SN_132.06_Bot1 | DOM | 25 | 8 | 0 | 0 | 1 | 0 | 0 | 0 | 0 | 0 | 0 | 0 |
| SN_132.06_Bot1 | DOM | 26 | 9 | 0 | 0 | 1 | 0 | 0 | 1 | 1 | 0 | 0 | 0 |
| SN_132.06_Bot1 | DOM | 27 | 4 | 0 | 0 | 1 | 0 | 0 | 1 | 0 | 0 | 0 | 0 |
| SN_132.06_Bot1 | DOM | 28 | 12 | 0 | 0 | 1 | 0 | 0 | 1 | 1 | 0 | 0 | 0 |
| SN_132.06_Bot1 | DOM | 29 | 7 | 0 | 0 | 1 | 0 | 0 | 0 | 1 | 0 | 0 | 0 |
| SN_132.06_Bot1 | DOM | 30 | 8 | 0 | 0 | 0 | 0 | 0 | 0 | 0 | 0 | 0 | 0 |
| SN_132.06_Bot1 | DOM | 31 | 10 | 0 | 0 | 0 | 0 | 0 | 1 | 1 | 0 | 0 | 0 |
| SN_132.06_Bot1 | DOM | 32 | 7 | 0 | 0 | 1 | 0 | 0 | 1 | 0 | 0 | 0 | 0 |
| SN_132.06_Bot1 | DOM | 34 | 5 | 0 | 0 | 0 | 0 | 0 | 1 | 1 | 1 | 0 | 0 |
| SN_132.06_Bot1 | DOM | 35 | 4 | 0 | 0 | 1 | 0 | 0 | 1 | 0 | 0 | 0 | 0 |
| SN_132.06_Bot1 | DOM | 36 | 8 | 0 | 0 | 0 | 0 | 0 | 0 | 1 | 1 | 0 | 0 |
| SN_132.06_Bot1 | DOM | 37 | 4 | 0 | 0 | 1 | 0 | 0 | 1 | 1 | 0 | 0 | 0 |
| SN_132.06_Bot1 | DOM | 38 | 8 | 0 | 0 | 1 | 0 | 0 | 1 | 0 | 0 | 0 | 0 |
| SN_132.06_Bot1 | DOM | 39 | 6 | 0 | 0 | 1 | 0 | 0 | 0 | 1 | 0 | 0 | 0 |
| SN_132.06_Bot1 | DOM | 41 | 11 | 0 | 0 | 1 | 0 | 0 | 1 | 1 | 0 | 0 | 0 |
| SN_132.06_Bot1 | DOM | 42 | 8 | 0 | 0 | 0 | 0 | 0 | 1 | 1 | 0 | 0 | 0 |
| SN_132.06_Bot1 | DOM | 44 | 7 | 0 | 0 | 1 | 1 | 0 | 0 | 1 | 0 | 0 | 0 |
| SN_132.06_Bot1 | DOM | 45 | 5 | 0 | 0 | 0 | 0 | 0 | 0 | 1 | 1 | 0 | 0 |
| SN_132.06_Bot1 | DOM | 46 | 5 | 0 | 0 | 0 | 0 | 0 | 0 | 1 | 1 | 0 | 0 |
| SN_132.06_Bot1 | DOM | 47 | 10 | 0 | 0 | 0 | 0 | 0 | 1 | 1 | 0 | 0 | 0 |
| SN_132.06_Bot1 | DOM | 48 | 4 | 0 | 0 | 1 | 0 | 0 | 1 | 0 | 0 | 0 | 0 |
| SN_132.06_Bot1 | DOM | 49 | 7 | 0 | 0 | 1 | 0 | 0 | 0 | 1 | 0 | 0 | 0 |
| SN_132.06_Bot1 | DOM | 50 | 8 | 0 | 0 | 0 | 0 | 0 | 0 | 1 | 0 | 0 | 0 |
| SN_137.02_Bot1 | STOR | 1 | 15 | 0 | 0 | 1 | 0 | 0 | 0 | 1 | 1 | 0 | 0 |
| SN_137.02_Bot1 | STOR | 2 | 5 | 0 | 0 | 0 | 0 | 0 | 0 | 0 | 0 | 0 | 0 |
| SN_137.02_Bot1 | STOR | 3 | 20 | 0 | 0 | 1 | 1 | 0 | 0 | 1 | 1 | 0 | 0 |
| SN_137.02_Bot1 | STOR | 4 | 10 | 0 | 0 | 1 | 1 | 0 | 0 | 1 | 0 | 0 | 0 |
| SN_137.02_Bot1 | STOR | 5 | 10 | 0 | 0 | 1 | 1 | 0 | 0 | 1 | 1 | 0 | 0 |
| SN_137.02_Bot1 | STOR | 6 | 12 | 0 | 0 | 1 | 1 | 0 | 0 | 1 | 1 | 0 | 0 |
| SN_137.02_Bot1 | STOR | 7 | 12 | 0 | 0 | 1 | 1 | 0 | 0 | 0 | 1 | 0 | 0 |
| SN_137.02_Bot1 | STOR | 8 | 11 | 0 | 0 | 1 | 1 | 0 | 0 | 1 | 1 | 0 | 0 |
| SN_137.02_Bot1 | STOR | 9 | 12 | 0 | 0 | 1 | 0 | 0 | 0 | 0 | 0 | 0 | 0 |
| SN_137.02_Bot1 | STOR | 10 | 12 | 0 | 0 | 1 | 1 | 0 | 0 | 1 | 1 | 0 | 0 |
| SN_137.02_Bot1 | STOR | 11 | 13 | 0 | 0 | 0 | 0 | 0 | 0 | 1 | 1 | 0 | 0 |
| SN_137.02_Bot1 | STOR | 12 | 2 | 0 | 0 | 0 | 0 | 0 | 0 | 0 | 0 | 0 | 0 |
| SN_137.02_Bot1 | STOR | 13 | 12 | 0 | 0 | 1 | 0 | 0 | 0 | 1 | 1 | 0 | 0 |
| SN_137.02_Bot1 | STOR | 14 | 14 | 0 | 0 | 1 | 0 | 0 | 0 | 1 | 0 | 0 | 0 |
| SN_137.02_Bot1 | STOR | 15 | 9 | 0 | 0 | 1 | 0 | 0 | 0 | 1 | 1 | 0 | 0 |
| SN_137.02_Bot1 | STOR | 16 | 8 | 0 | 0 | 0 | 1 | 0 | 0 | 1 | 0 | 0 | 0 |
| SN_137.02_Bot1 | STOR | 17 | 7 | 0 | 0 | 0 | 0 | 0 | 0 | 1 | 1 | 0 | 0 |
| SN_137.02_Bot1 | STOR | 18 | 5 | 0 | 0 | 1 | 0 | 0 | 0 | 1 | 1 | 0 | 0 |
| SN_137.02_Bot1 | STOR | 19 | 8 | 0 | 0 | 1 | 0 | 0 | 0 | 1 | 0 | 0 | 0 |
| SN_137.02_Bot1 | STOR | 20 | 8 | 0 | 0 | 1 | 0 | 0 | 0 | 1 | 1 | 0 | 0 |
| SN_137.02_Bot1 | STOR | 21 | 9 | 0 | 0 | 1 | 1 | 0 | 0 | 1 | 1 | 0 | 0 |
| SN_137.02_Bot1 | STOR | 22 | 11 | 0 | 0 | 0 | 0 | 0 | 0 | 1 | 1 | 0 | 0 |
| SN_137.02_Bot1 | STOR | 23 | 12 | 0 | 0 | 1 | 0 | 0 | 1 | 1 | 0 | 0 | 0 |
| SN_137.02_Bot1 | STOR | 24 | 8 | 0 | 0 | 1 | 1 | 0 | 1 | 1 | 1 | 0 | 0 |
| SN_137.02_Bot1 | STOR | 25 | 11 | 0 | 0 | 0 | 0 | 0 | 0 | 1 | 1 | 0 | 0 |

| | | | | | | | | | | | | | |
|----------------|------|----|----|---|---|---|---|---|---|---|--|---|---|
| SN_137.02_Bot1 | STOR | 26 | 8 | 0 | 0 | 1 | 1 | 0 | 0 | 1 | | 1 | 0 |
| SN_137.02_Bot1 | STOR | 27 | 12 | 0 | 0 | 0 | 1 | 0 | 0 | 1 | | 0 | 0 |
| SN_137.02_Bot1 | STOR | 28 | 6 | 0 | 0 | 1 | 0 | 0 | 0 | 1 | | 0 | 0 |
| SN_137.02_Bot1 | STOR | 29 | 5 | 0 | 0 | 1 | 0 | 0 | 0 | 1 | | 1 | 0 |
| SN_137.02_Bot1 | STOR | 30 | 13 | 0 | 0 | 1 | 1 | 0 | 0 | 1 | | 0 | 0 |
| SN_137.02_Bot1 | STOR | 31 | 11 | 0 | 0 | 0 | 0 | 0 | 0 | 1 | | 1 | 0 |
| SN_137.02_Bot1 | STOR | 32 | 10 | 0 | 0 | 0 | 0 | 0 | 0 | 0 | | 0 | 0 |
| SN_137.02_Bot1 | STOR | 33 | 13 | 0 | 0 | 1 | 1 | 0 | 0 | 0 | | 1 | 0 |
| SN_137.02_Bot1 | STOR | 34 | 14 | 0 | 0 | 0 | 0 | 0 | 0 | 1 | | 1 | 0 |
| SN_137.02_Bot1 | STOR | 35 | 8 | 0 | 0 | 0 | 0 | 0 | 0 | 1 | | 0 | 0 |
| SN_137.02_Bot1 | STOR | 36 | 8 | 0 | 0 | 1 | 0 | 0 | 0 | 1 | | 1 | 0 |
| SN_137.02_Bot1 | STOR | 37 | 6 | 0 | 0 | 0 | 1 | 0 | 0 | 0 | | 0 | 0 |
| SN_137.02_Bot1 | STOR | 38 | 8 | 0 | 0 | 1 | 0 | 0 | 0 | 1 | | 0 | 0 |
| SN_137.02_Bot1 | STOR | 39 | 10 | 0 | 0 | 1 | 0 | 0 | 0 | 1 | | 1 | 0 |
| SN_137.02_Bot1 | STOR | 40 | 12 | 0 | 0 | 1 | 1 | 0 | 0 | 1 | | 0 | 0 |
| SN_137.02_Bot1 | STOR | 41 | 9 | 0 | 0 | 1 | 1 | 0 | 1 | 1 | | 1 | 0 |
| SN_137.02_Bot1 | STOR | 42 | 10 | 0 | 0 | 0 | 1 | 0 | 0 | 1 | | 1 | 0 |
| SN_137.02_Bot1 | STOR | 43 | 12 | 0 | 0 | 1 | 0 | 0 | 0 | 1 | | 0 | 0 |
| SN_137.02_Bot1 | STOR | 44 | 14 | 0 | 0 | 1 | 0 | 0 | 1 | 1 | | 1 | 0 |
| SN_137.02_Bot1 | STOR | 45 | 6 | 0 | 0 | 1 | 0 | 0 | 0 | 1 | | 1 | 0 |
| SN_137.02_Bot1 | STOR | 46 | 9 | 0 | 0 | 1 | 0 | 0 | 1 | 1 | | 0 | 0 |
| SN_137.02_Bot1 | STOR | 47 | 6 | 0 | 0 | 0 | 0 | 0 | 0 | 0 | | 0 | 0 |
| SN_137.02_Bot1 | STOR | 48 | 10 | 0 | 0 | 0 | 0 | 0 | 0 | 1 | | 1 | 0 |
| SN_137.02_Bot1 | STOR | 49 | 13 | 0 | 0 | 1 | 0 | 0 | 0 | 1 | | 1 | 0 |
| SN_137.02_Bot1 | STOR | 50 | 8 | 0 | 0 | 1 | 0 | 0 | 0 | 1 | | 1 | 0 |
| SN_152.03_Bot1 | OVEN | 1 | 22 | 0 | 0 | 1 | 0 | 0 | 1 | 1 | | 0 | 0 |
| SN_152.03_Bot1 | OVEN | 2 | 10 | 0 | 0 | 1 | 1 | 0 | 0 | 0 | | 1 | 0 |
| SN_152.03_Bot1 | OVEN | 3 | 6 | 0 | 0 | 1 | 1 | 0 | 0 | 0 | | 0 | 0 |
| SN_152.03_Bot1 | OVEN | 4 | 17 | 0 | 0 | 1 | 0 | 0 | 1 | 0 | | 0 | 0 |
| SN_152.03_Bot1 | OVEN | 5 | 13 | 0 | 0 | 1 | 0 | 0 | 1 | 1 | | 1 | 0 |
| SN_152.03_Bot1 | OVEN | 6 | 17 | 0 | 0 | 1 | 0 | 0 | 1 | 1 | | 0 | 0 |
| SN_152.03_Bot1 | OVEN | 7 | 20 | 0 | 0 | 1 | 0 | 0 | 1 | 1 | | 0 | 0 |
| SN_152.03_Bot1 | OVEN | 8 | 14 | 0 | 0 | 1 | 0 | 0 | 1 | 1 | | 0 | 0 |
| SN_152.03_Bot1 | OVEN | 9 | 8 | 0 | 0 | 1 | 0 | 0 | 1 | 1 | | 0 | 0 |
| SN_152.03_Bot1 | OVEN | 10 | 5 | 0 | 0 | 1 | 1 | 0 | 1 | 0 | | 0 | 0 |
| SN_152.03_Bot1 | OVEN | 11 | 8 | 0 | 0 | 1 | 0 | 0 | 1 | 0 | | 0 | 0 |
| SN_152.03_Bot1 | OVEN | 12 | 5 | 0 | 0 | 1 | 0 | 0 | 0 | 0 | | 0 | 0 |
| SN_152.03_Bot1 | OVEN | 13 | 4 | 0 | 0 | 1 | 0 | 0 | 1 | 1 | | 1 | 0 |
| SN_152.03_Bot1 | OVEN | 15 | 8 | 0 | 0 | 0 | 0 | 0 | 1 | 0 | | 0 | 0 |
| SN_152.03_Bot1 | OVEN | 16 | 7 | 0 | 0 | 0 | 0 | 0 | 1 | 0 | | 0 | 0 |
| SN_152.03_Bot1 | OVEN | 17 | 15 | 0 | 0 | 1 | 0 | 0 | 1 | 0 | | 0 | 0 |
| SN_152.03_Bot1 | OVEN | 18 | 8 | 0 | 0 | 0 | 0 | 0 | 1 | 0 | | 0 | 0 |
| SN_152.03_Bot1 | OVEN | 19 | 7 | 0 | 0 | 0 | 0 | 0 | 1 | 1 | | 0 | 0 |
| SN_152.03_Bot1 | OVEN | 20 | 10 | 0 | 0 | 0 | 0 | 0 | 0 | 0 | | 0 | 0 |
| SN_152.03_Bot1 | OVEN | 21 | 8 | 0 | 0 | 1 | 1 | 0 | 0 | 0 | | 0 | 0 |
| SN_152.03_Bot1 | OVEN | 22 | 13 | 0 | 0 | 1 | 0 | 0 | 1 | 1 | | 0 | 0 |
| SN_152.03_Bot1 | OVEN | 23 | 4 | 0 | 0 | 0 | 1 | 0 | 0 | 1 | | 0 | 0 |
| SN_152.03_Bot1 | OVEN | 24 | 8 | 0 | 0 | 1 | 0 | 0 | 1 | 1 | | 0 | 0 |
| SN_152.03_Bot1 | OVEN | 25 | 7 | 0 | 0 | 0 | 0 | 0 | 0 | 0 | | 0 | 0 |
| SN_152.03_Bot1 | OVEN | 26 | 8 | 0 | 0 | 1 | 0 | 0 | 0 | 1 | | 0 | 0 |
| SN_152.03_Bot1 | OVEN | 27 | 10 | 0 | 0 | 0 | 0 | 0 | 0 | 0 | | 0 | 0 |

| | | | | | | | | | | | | | |
|----------------|------|----|----|---|---|---|---|---|---|---|--|---|---|
| SN_152.03_Bot1 | OVEN | 28 | 11 | 0 | 0 | 1 | 0 | 0 | 1 | 1 | | 0 | 0 |
| SN_152.03_Bot1 | OVEN | 29 | 17 | 0 | 0 | 0 | 0 | 0 | 1 | 1 | | 0 | 0 |
| SN_152.03_Bot1 | OVEN | 30 | 11 | 0 | 0 | 0 | 0 | 0 | 1 | 1 | | 0 | 0 |
| SN_152.03_Bot1 | OVEN | 31 | 9 | 0 | 0 | 0 | 0 | 0 | 1 | 1 | | 1 | 0 |
| SN_152.03_Bot1 | OVEN | 32 | 10 | 0 | 0 | 1 | 0 | 0 | 1 | 1 | | 0 | 0 |
| SN_152.03_Bot1 | OVEN | 33 | 12 | 0 | 0 | 0 | 0 | 0 | 1 | 1 | | 0 | 0 |
| SN_152.03_Bot1 | OVEN | 34 | 5 | 0 | 0 | 1 | 0 | 0 | 1 | 1 | | 0 | 0 |
| SN_152.03_Bot1 | OVEN | 35 | 10 | 0 | 0 | 0 | 0 | 0 | 0 | 0 | | 0 | 0 |
| SN_152.03_Bot1 | OVEN | 36 | 7 | 0 | 0 | 0 | 0 | 0 | 1 | 0 | | 0 | 0 |
| SN_152.03_Bot1 | OVEN | 37 | 10 | 0 | 0 | 1 | 0 | 0 | 1 | 1 | | 0 | 0 |
| SN_152.03_Bot1 | OVEN | 38 | 8 | 0 | 0 | 0 | 0 | 0 | 1 | 1 | | 0 | 0 |
| SN_152.03_Bot1 | OVEN | 39 | 7 | 0 | 0 | 0 | 0 | 0 | 1 | 0 | | 0 | 0 |
| SN_152.03_Bot1 | OVEN | 40 | 6 | 0 | 0 | 0 | 0 | 0 | 0 | 0 | | 0 | 0 |
| SN_152.03_Bot1 | OVEN | 41 | 10 | 0 | 0 | 1 | 0 | 0 | 1 | 1 | | 0 | 0 |
| SN_152.03_Bot1 | OVEN | 42 | 7 | 0 | 0 | 0 | 0 | 0 | 1 | 1 | | 0 | 0 |
| SN_152.03_Bot1 | OVEN | 43 | 9 | 0 | 0 | 0 | 0 | 0 | 1 | 0 | | 0 | 0 |
| SN_152.03_Bot1 | OVEN | 44 | 12 | 0 | 0 | 0 | 0 | 0 | 0 | 0 | | 0 | 0 |
| SN_152.03_Bot1 | OVEN | 45 | 10 | 0 | 0 | 1 | 0 | 0 | 1 | 1 | | 0 | 0 |
| SN_152.03_Bot1 | OVEN | 46 | 6 | 0 | 0 | 0 | 0 | 0 | 0 | 0 | | 0 | 0 |
| SN_152.03_Bot1 | OVEN | 47 | 7 | 0 | 0 | 1 | 0 | 0 | 1 | 1 | | 0 | 0 |
| SN_152.03_Bot1 | OVEN | 48 | 10 | 0 | 0 | 1 | 0 | 0 | 1 | 1 | | 0 | 0 |
| SN_152.03_Bot1 | OVEN | 49 | 5 | 0 | 0 | 1 | 0 | 0 | 1 | 0 | | 0 | 0 |
| SN_152.03_Bot1 | OVEN | 50 | 5 | 0 | 0 | 0 | 0 | 0 | 1 | 0 | | 0 | 0 |
| SN_152.06_Bot1 | OVEN | 1 | 15 | 0 | 0 | 0 | 0 | 0 | 0 | 0 | | 1 | 0 |
| SN_152.06_Bot1 | OVEN | 2 | 16 | 1 | 0 | 0 | 0 | 0 | 0 | 0 | | 0 | 0 |
| SN_152.06_Bot1 | OVEN | 3 | 22 | 0 | 0 | 1 | 1 | 0 | 0 | 1 | | 1 | 0 |
| SN_152.06_Bot1 | OVEN | 4 | 10 | 0 | 0 | 0 | 1 | 0 | 0 | 0 | | 0 | 0 |
| SN_152.06_Bot1 | OVEN | 5 | 8 | 0 | 0 | 1 | 1 | 0 | 0 | 0 | | 1 | 0 |
| SN_152.06_Bot1 | OVEN | 6 | 19 | 0 | 0 | 0 | 0 | 0 | 0 | 0 | | 0 | 0 |
| SN_152.06_Bot1 | OVEN | 7 | 18 | 0 | 0 | 1 | 0 | 0 | 1 | 1 | | 0 | 0 |
| SN_152.06_Bot1 | OVEN | 8 | 15 | 0 | 0 | 1 | 0 | 0 | 1 | 1 | | 0 | 0 |
| SN_152.06_Bot1 | OVEN | 10 | 18 | 0 | 0 | 1 | 0 | 0 | 0 | 1 | | 0 | 0 |
| SN_152.06_Bot1 | OVEN | 11 | 8 | 0 | 0 | 0 | 0 | 0 | 0 | 1 | | 0 | 0 |
| SN_152.06_Bot1 | OVEN | 12 | 9 | 0 | 0 | 1 | 1 | 0 | 1 | 0 | | 1 | 0 |
| SN_152.06_Bot1 | OVEN | 13 | 12 | 0 | 0 | 0 | 1 | 0 | 0 | 1 | | 0 | 0 |
| SN_152.06_Bot1 | OVEN | 14 | 20 | 0 | 0 | 0 | 0 | 0 | 0 | 0 | | 0 | 0 |
| SN_152.06_Bot1 | OVEN | 15 | 8 | 0 | 0 | 1 | 1 | 0 | 0 | 0 | | 0 | 0 |
| SN_152.06_Bot1 | OVEN | 16 | 22 | 0 | 0 | 1 | 0 | 0 | 0 | 0 | | 0 | 0 |
| SN_152.06_Bot1 | OVEN | 17 | 18 | 0 | 0 | 0 | 0 | 0 | 1 | 0 | | 0 | 0 |
| SN_152.06_Bot1 | OVEN | 18 | 10 | 0 | 0 | 0 | 0 | 0 | 1 | 0 | | 0 | 0 |
| SN_152.06_Bot1 | OVEN | 19 | 15 | 0 | 0 | 0 | 0 | 0 | 0 | 0 | | 0 | 0 |
| SN_152.06_Bot1 | OVEN | 20 | 24 | 0 | 0 | 0 | 0 | 0 | 0 | 1 | | 0 | 0 |
| SN_152.06_Bot1 | OVEN | 21 | 14 | 0 | 0 | 0 | 0 | 0 | 1 | 1 | | 1 | 0 |
| SN_152.06_Bot1 | OVEN | 22 | 10 | 0 | 0 | 0 | 0 | 0 | 0 | 1 | | 0 | 0 |
| SN_152.06_Bot1 | OVEN | 23 | 17 | 0 | 0 | 1 | 0 | 0 | 1 | 0 | | 0 | 0 |
| SN_152.06_Bot1 | OVEN | 24 | 12 | 0 | 0 | 0 | 0 | 0 | 0 | 0 | | 0 | 0 |
| SN_152.06_Bot1 | OVEN | 25 | 9 | 0 | 0 | 0 | 0 | 0 | 1 | 0 | | 0 | 0 |
| SN_152.06_Bot1 | OVEN | 26 | 12 | 0 | 0 | 0 | 0 | 0 | 0 | 0 | | 1 | 0 |
| SN_152.06_Bot1 | OVEN | 27 | 13 | 0 | 0 | 0 | 0 | 0 | 0 | 0 | | 0 | 0 |
| SN_152.06_Bot1 | OVEN | 28 | 6 | 0 | 0 | 1 | 0 | 0 | 0 | 1 | | 0 | 0 |
| SN_152.06_Bot1 | OVEN | 29 | 8 | 0 | 0 | 0 | 0 | 0 | 1 | 0 | | 0 | 0 |

Supplementary data 3. Detailed results of the correspondance analysis on archaeological contexts with charcoal, seed and fruit remains.

Cons=consistence, Copro=coprolite, DIV=charcoal taxonomical diversity, Rad-C=radial cracks, Hyp=fungi hyphae, Tw-Br=twigs, branches, Vitri=vitrification. Context 403.06 groups two samples (403.06_Bot1 and 403.06_Bot2). "Consistence" variable is complementary. For the CA we used the software AnalyseSHS (<http://analyse.univ-paris1.fr/>).

| |
|-------------------------------------------|
| Pearson's Chi: 958.4565 |
| Degrees of freedom: 77 |
| Probability of independence: 3.17871e-152 |
| ∅: 0.7888531 |

Factor scores

| | Eigenvalue | Percent contribution | Cumulative proportion |
|-------|------------|----------------------|-----------------------|
| dim 1 | 0.494997 | 64.024419 | 64.024419 |
| dim 2 | 0.165172 | 21.363846 | 85.388264 |
| dim 3 | 0.055899 | 7.230185 | 92.61845 |
| dim 4 | 0.047468 | 6.139706 | 98.758156 |
| dim 5 | 0.006677 | 0.86367 | 99.621826 |
| dim 6 | 0.002924 | 0.378174 | 100 |

Individuals – Coordinates, contribution and cos2

| Individuals | F1 | | | F2 | | | F3 | | | F4 | | | F5 | | | F6 | | |
|---------------|----------|----------|-------|----------|----------|-------|----------|----------|-------|----------|----------|-------|----------|----------|-------|----------|----------|-------|
| | coord | contrib | cos2 | coord | contrib | cos2 | coord | contrib | cos2 | coord | contrib | cos2 | coord | contrib | cos2 | coord | contrib | cos2 |
| 110.05 | 0.7422 | 7.20336 | 0.903 | 7.20336 | 0.0059 | 0 | -0.01227 | 0.17998 | 0.003 | 0.0059 | 6.42188 | 0.077 | -0.03942 | 0.12834 | 0 | 0.17998 | 22.37457 | 0.017 |
| 116.17 | 0.53435 | 2.75968 | 0.107 | 2.75968 | 60.482 | 0.785 | 1.44502 | 23.94618 | 0.105 | 60.482 | 0.40616 | 0.002 | 0.52895 | 1.45384 | 0.001 | 23.94618 | 0.41707 | 0 |
| 116.21 | -0.84332 | 43.93842 | 0.987 | 43.93842 | 0.46793 | 0.004 | -0.05027 | 1.06473 | 0.003 | 0.46793 | 0.52689 | 0.001 | -0.04412 | 18.38794 | 0.006 | 1.06473 | 0.44054 | 0 |
| 116.25 | 0.74197 | 5.94683 | 0.751 | 5.94683 | 0.57535 | 0.024 | 0.13331 | 7.85781 | 0.112 | 0.57535 | 8.43077 | 0.102 | -0.28661 | 0.06742 | 0 | 7.85781 | 14.86876 | 0.011 |
| 117.05 | 0.54311 | 4.36024 | 0.711 | 4.36024 | 3.0644 | 0.167 | -0.26301 | 3.01693 | 0.056 | 3.0644 | 2.46718 | 0.039 | 0.15182 | 3.87553 | 0.009 | 3.01693 | 20.04724 | 0.019 |
| 125.05 | -0.18975 | 0.55268 | 0.12 | 0.55268 | 7.97445 | 0.578 | -0.41635 | 6.56901 | 0.161 | 7.97445 | 0.0312 | 0.001 | 0.21983 | 46.95453 | 0.138 | 6.56901 | 2.07036 | 0.003 |
| 130.06 | -0.46218 | 6.07241 | 0.77 | 6.07241 | 3.56529 | 0.151 | 0.20457 | 0.1256 | 0.002 | 3.56529 | 3.56484 | 0.043 | 0.02234 | 20.19612 | 0.035 | 0.1256 | 0.091 | 0 |
| 132.06 | 0.71377 | 5.69651 | 0.739 | 5.69651 | 0.07034 | 0.003 | 0.04582 | 4.23146 | 0.062 | 0.07034 | 15.65244 | 0.195 | -0.20673 | 0.37722 | 0.001 | 4.23146 | 0.36329 | 0 |
| 137.02 | 0.90138 | 10.16259 | 0.523 | 10.16259 | 16.70096 | 0.287 | -0.66749 | 8.14633 | 0.047 | 16.70096 | 27.62185 | 0.136 | 0.2712 | 8.01726 | 0.006 | 8.14633 | 0.71437 | 0 |
| 152.03 | 0.68985 | 6.31314 | 0.641 | 6.31314 | 1.60795 | 0.055 | 0.20111 | 22.31702 | 0.256 | 1.60795 | 3.11819 | 0.03 | -0.43586 | 0.127 | 0 | 22.31702 | 29.33861 | 0.018 |
| 152.06 | 0.76251 | 4.2973 | 0.681 | 4.2973 | 0.00629 | 0 | 0.01686 | 8.97716 | 0.161 | 0.00629 | 10.28741 | 0.156 | -0.37036 | 5.00E-05 | 0 | 8.97716 | 1.78181 | 0.002 |

| | | | | | | | | | | | | | | | | | | |
|--------|---------|---------|------|---------|---------|-------|----------|----------|-------|---------|----------|-------|--------|---------|-------|----------|---------|-------|
| 403.06 | 0.84351 | 2.69683 | 0.33 | 2.69683 | 5.47914 | 0.224 | -0.69453 | 13.56779 | 0.188 | 5.47914 | 21.47117 | 0.252 | 0.6358 | 0.41475 | 0.001 | 13.56779 | 7.49236 | 0.005 |
|--------|---------|---------|------|---------|---------|-------|----------|----------|-------|---------|----------|-------|--------|---------|-------|----------|---------|-------|

Variables – Coordinates, contribution and cos2

| | F1 | | | F2 | | | F3 | | | F4 | | | F5 | | | F6 | | |
|--------------|----------|----------|-------|----------|----------|-------|----------|----------|-------|----------|----------|-------|----------|----------|-------|----------|----------|-------|
| Variables | coord | contrib | cos2 | coord | contrib | cos2 | coord | contrib | cos2 | coord | contrib | cos2 | coord | contrib | cos2 | coord | contrib | cos2 |
| DIV | 0.6309 | 1.35777 | 0.596 | 1.35777 | 0.58299 | 0.085 | 0.2388 | 0.30258 | 0.015 | 0.58299 | 1.11138 | 0.047 | 0.10008 | 3.03751 | 0.018 | 0.30258 | 91.91922 | 0.238 |
| Hyp | 0.8101 | 8.45726 | 0.468 | 8.45726 | 6.31784 | 0.117 | -0.40446 | 0.21177 | 0.001 | 6.31784 | 78.08056 | 0.414 | -0.04308 | 0.2104 | 0 | 0.21177 | 0.34319 | 0 |
| Rad C | 0.36008 | 6.33939 | 0.318 | 6.33939 | 26.94532 | 0.451 | 0.42882 | 39.87385 | 0.226 | 26.94532 | 0.9672 | 0.005 | -0.30347 | 0.19962 | 0 | 39.87385 | 1.47199 | 0 |
| Vitr | 0.59149 | 21.21718 | 0.707 | 21.21718 | 17.43043 | 0.194 | -0.30969 | 12.56554 | 0.047 | 17.43043 | 16.13479 | 0.052 | 0.15297 | 0.37008 | 0 | 12.56554 | 2.26323 | 0 |
| Tw Br | 0.15204 | 0.10952 | 0.005 | 0.10952 | 46.96893 | 0.736 | 1.81879 | 46.11903 | 0.244 | 46.96893 | 3.14233 | 0.014 | 1.04846 | 0.59593 | 0 | 46.11903 | 0.71904 | 0 |
| Seed | -0.93732 | 62.43752 | 0.991 | 62.43752 | 1.67739 | 0.009 | -0.08875 | 0.04692 | 0 | 1.67739 | 0.24562 | 0 | 0.00863 | 0.25892 | 0 | 0.04692 | 0.15539 | 0 |
| Copro | -0.46331 | 0.08136 | 0.053 | 0.08136 | 0.0771 | 0.017 | -0.26054 | 0.88031 | 0.064 | 0.0771 | 0.31813 | 0.02 | 0.51213 | 95.32753 | 0.834 | 0.88031 | 3.12795 | 0.012 |

Complementary variable – Coordinates and contribution

| | F1 | | F2 | | F3 | |
|-------------|-------|---------|-------|---------|--------|---------|
| Variables | coord | contrib | coord | contrib | coord | contrib |
| Cons | 0.770 | -0.522 | 0.408 | -0.169 | -0.110 | 0.003 |