



HAL
open science

SINOPOLIS

Gregory Lee

► **To cite this version:**

Gregory Lee. SINOPOLIS. SINOPOLIS: "Chineseness" and the Modern Chinese City Plenary Lecture, Sep 2008, Northampton, United Kingdom. halshs-00322907

HAL Id: halshs-00322907

<https://shs.hal.science/halshs-00322907v1>

Submitted on 20 Sep 2008

HAL is a multi-disciplinary open access archive for the deposit and dissemination of scientific research documents, whether they are published or not. The documents may come from teaching and research institutions in France or abroad, or from public or private research centers.

L'archive ouverte pluridisciplinaire **HAL**, est destinée au dépôt et à la diffusion de documents scientifiques de niveau recherche, publiés ou non, émanant des établissements d'enseignement et de recherche français ou étrangers, des laboratoires publics ou privés.

SINOPOLIS "Chineseness" and the Modern Chinese City Gregory Lee

Institute for Transtextual and Transcultural Studies
Université de Lyon, France

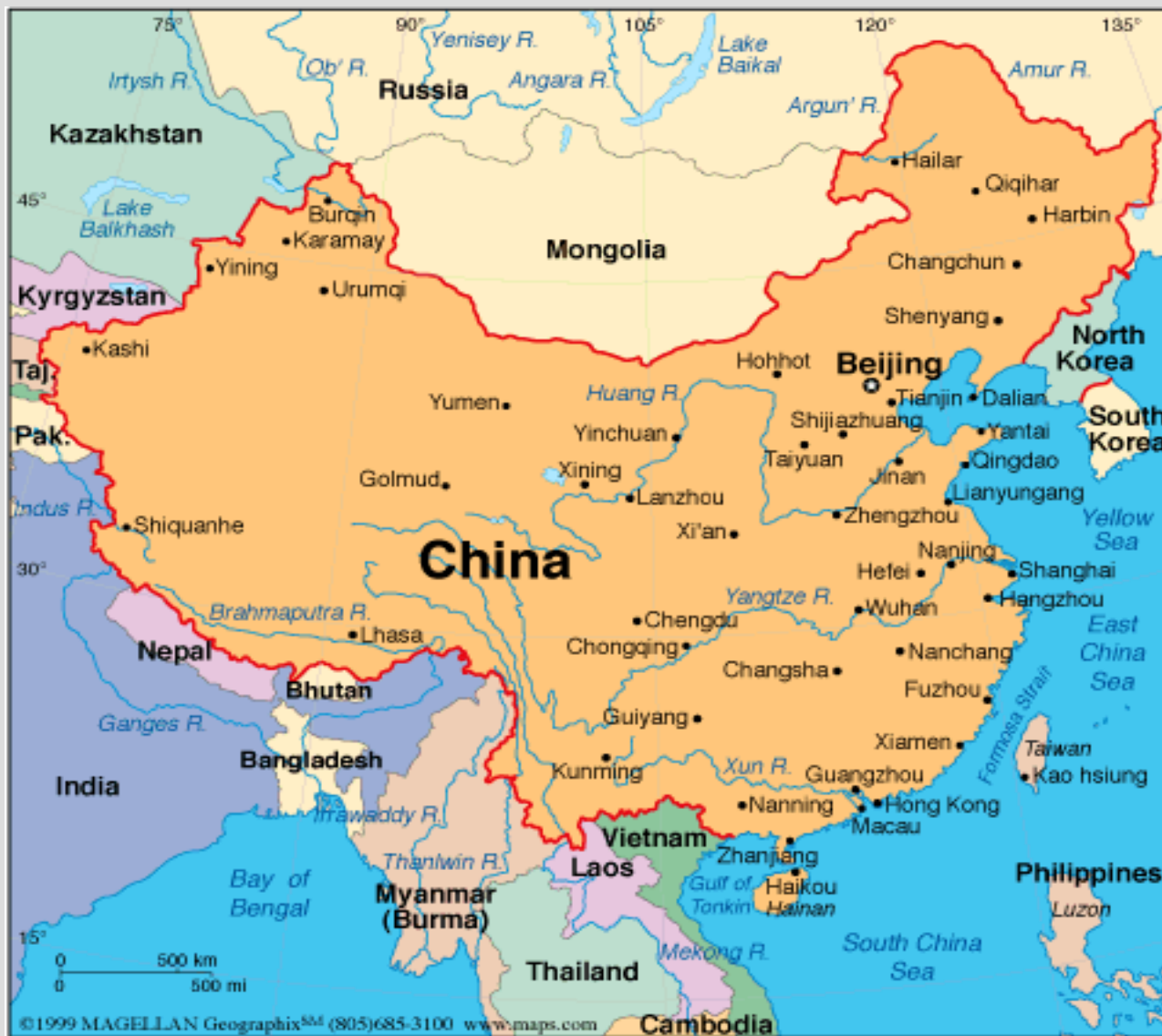
www.transtexts.net

www.gregorylee.net

Trantext()esTranscultures

www.transtexts.net

Photographs are either taken Gregory Lee (1979 -2008)
or are in the public domain



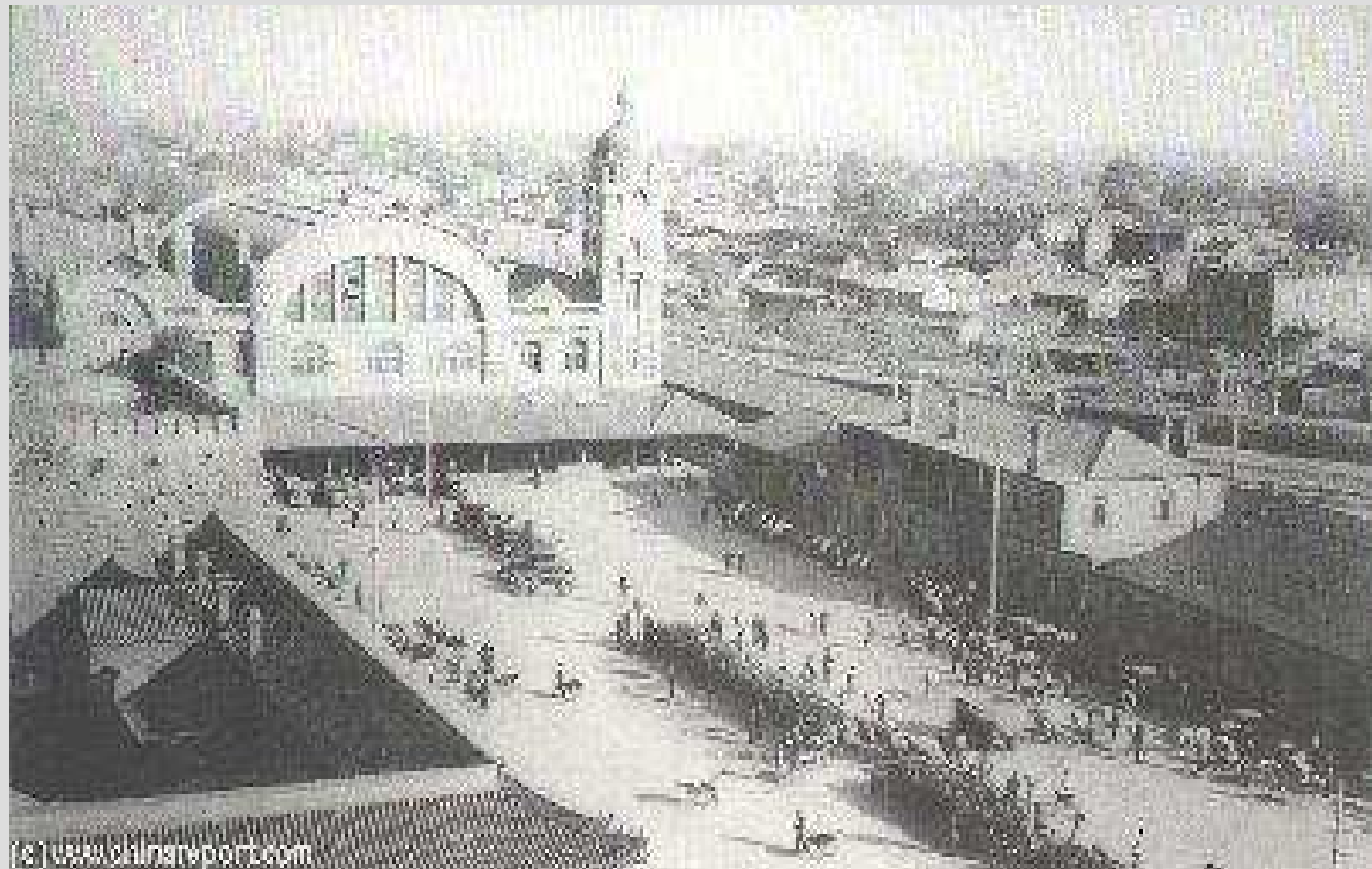
Street scene in pre-modern Beijing



Colonial concessions China

Peking





Tients'in - Tianjin





Shanghai





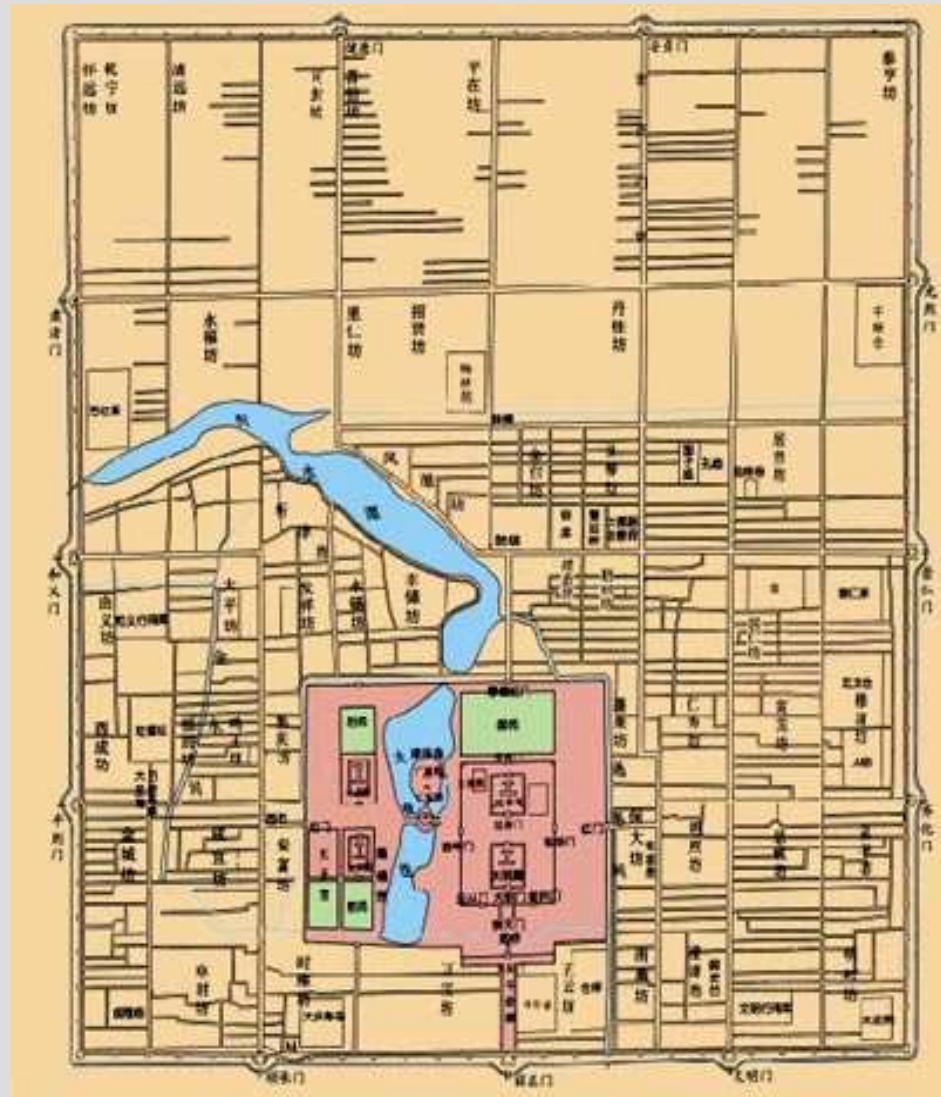


BEIJING/PEKING 1930s





北京 Beijing walled city



Forbidden City



北京天安門 Tiananmen



北京 Forbidden City/Tiananmen



Beijing Exhibition Centre, 1954



Tiananmen Square, 2007



Monument to the People's Heroes, erected in 1958



Great Hall of the People, 1959





Great Hall, Deng Xiaoping- Thatcher, 1982

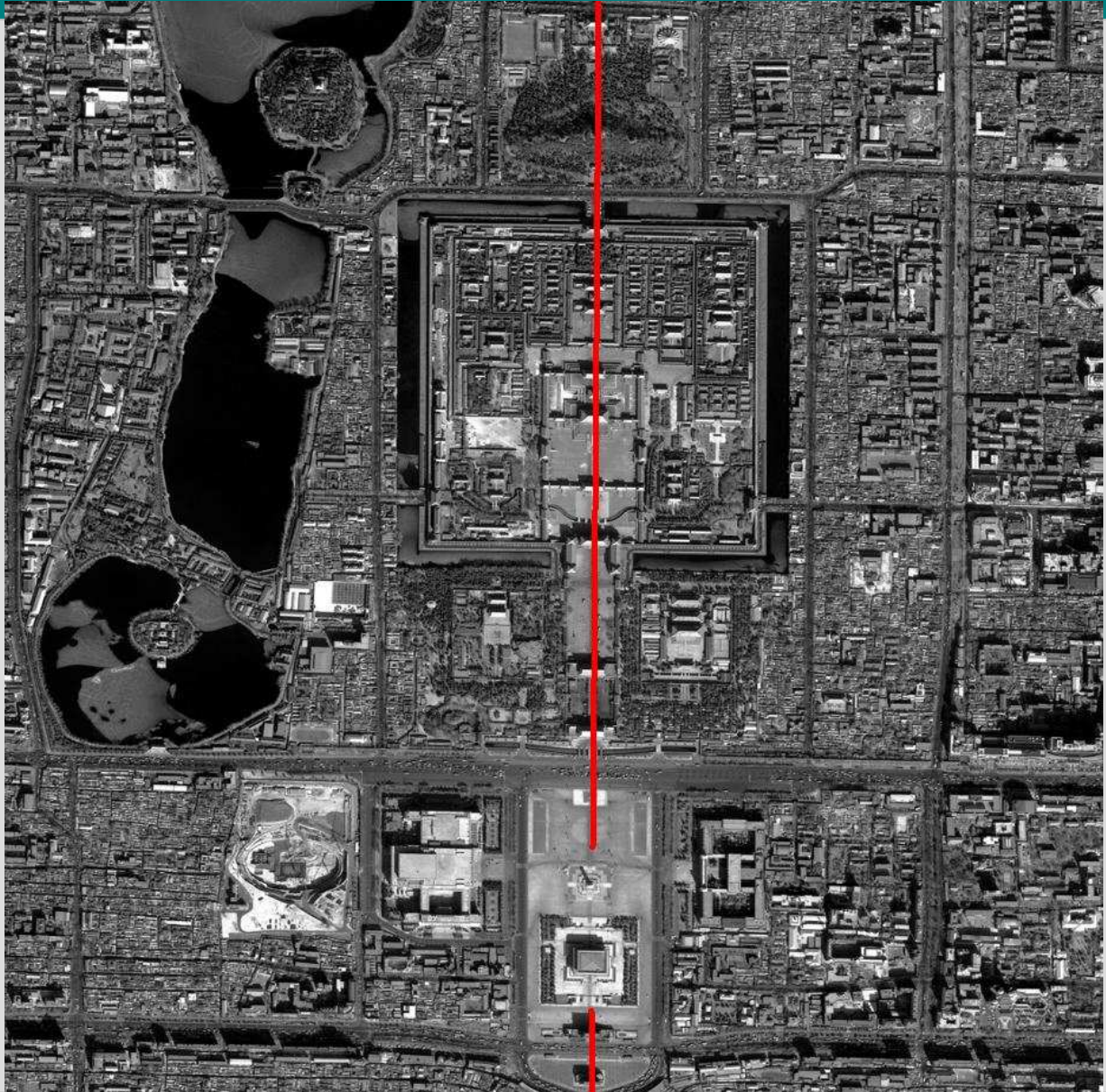


History Museum/ Museum of the Revolution, 1959



Mao Zedong Mausoleum, 1977





Tiananmen Square, 2007



1950s "Big Roof Controversy"

- Liang Sicheng, an architect and historian of Chinese architecture who idealized and was responsible for re-inventing the architectural imaginary of 'old China', described the 1950s Soviet-inspired, 'sinified' architectural style, big roofs with large, overhanging eaves crowning a Soviet-style building, as:
- **"Western suits with Chinese skullcaps"**
- He favoured a Chinese National architecture

Beijing Friendship Hotel built in 1954 to house Soviet 'experts'





Hunan University Main Hall, 1955



Big Roofs Condemned

- Even this limited sinification of modern buildings was condemned, in 1955, as **wasteful**; an economic argument
- Liang Sicheng became the main target of a political campaign against 'national style'

Tsinghua/Qinghua University, Main Building, 1968



Lack of funds led to the tower in the original plans
being reduced to a flat roof

Moscow State University

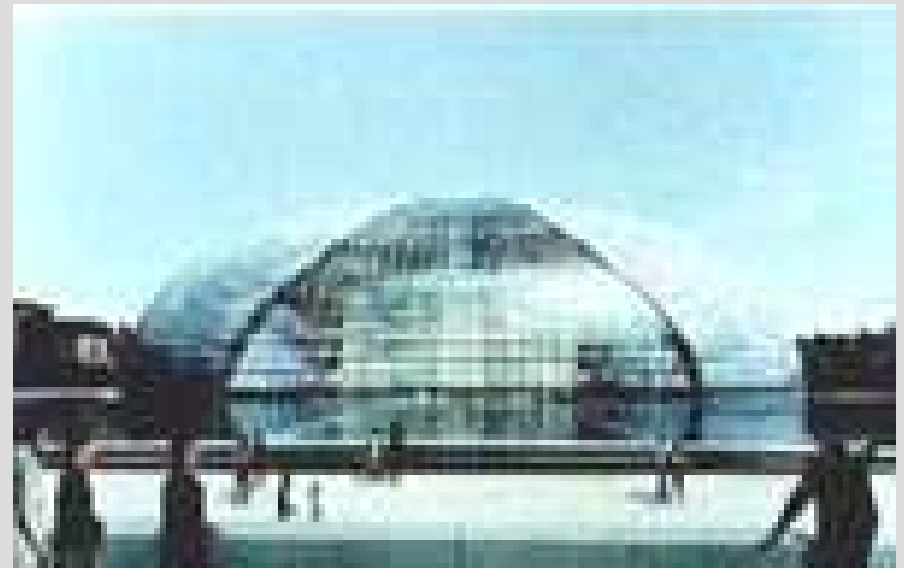
<http://msu.moscow.ru>





Beijing Opera House

- AKA the National Grand Theatre,
- AKA The Egg,
- Architect: Paul Andreu



The Egg





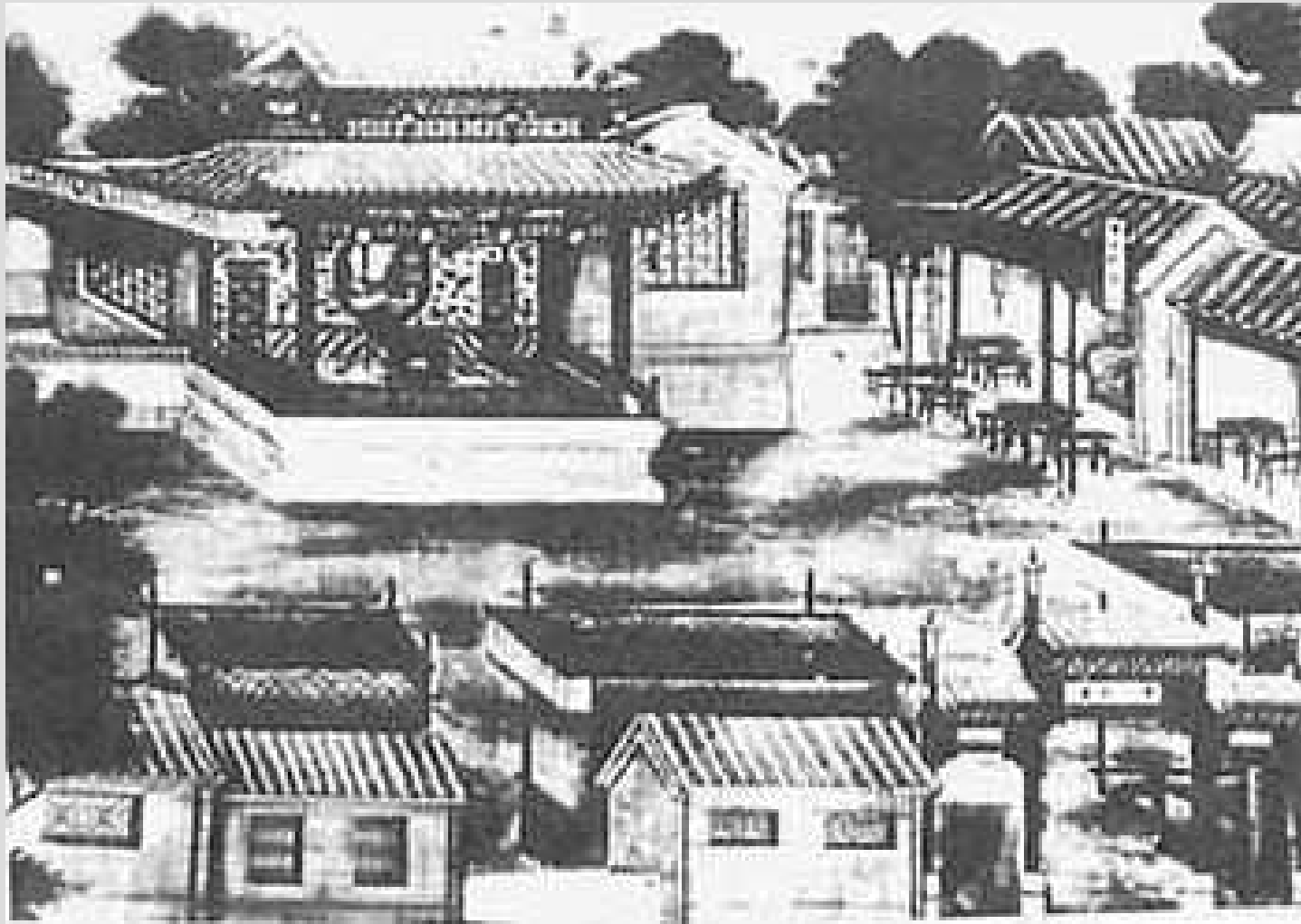


Centenary Opera House Reopened in Beijing

- 27 JUNE 2001
- June 27 saw the ribbon-cutting ceremony for the reopening of a hundred-year-old opera house "Guangde Theatre" meaning 'wide virtue'
- Founded in 1796, Guangde Theatre is one of the oldest theatres surviving in Beijing...



Guangde teahouse/theatre



Beijing's oldest theater to be reduced to rubble

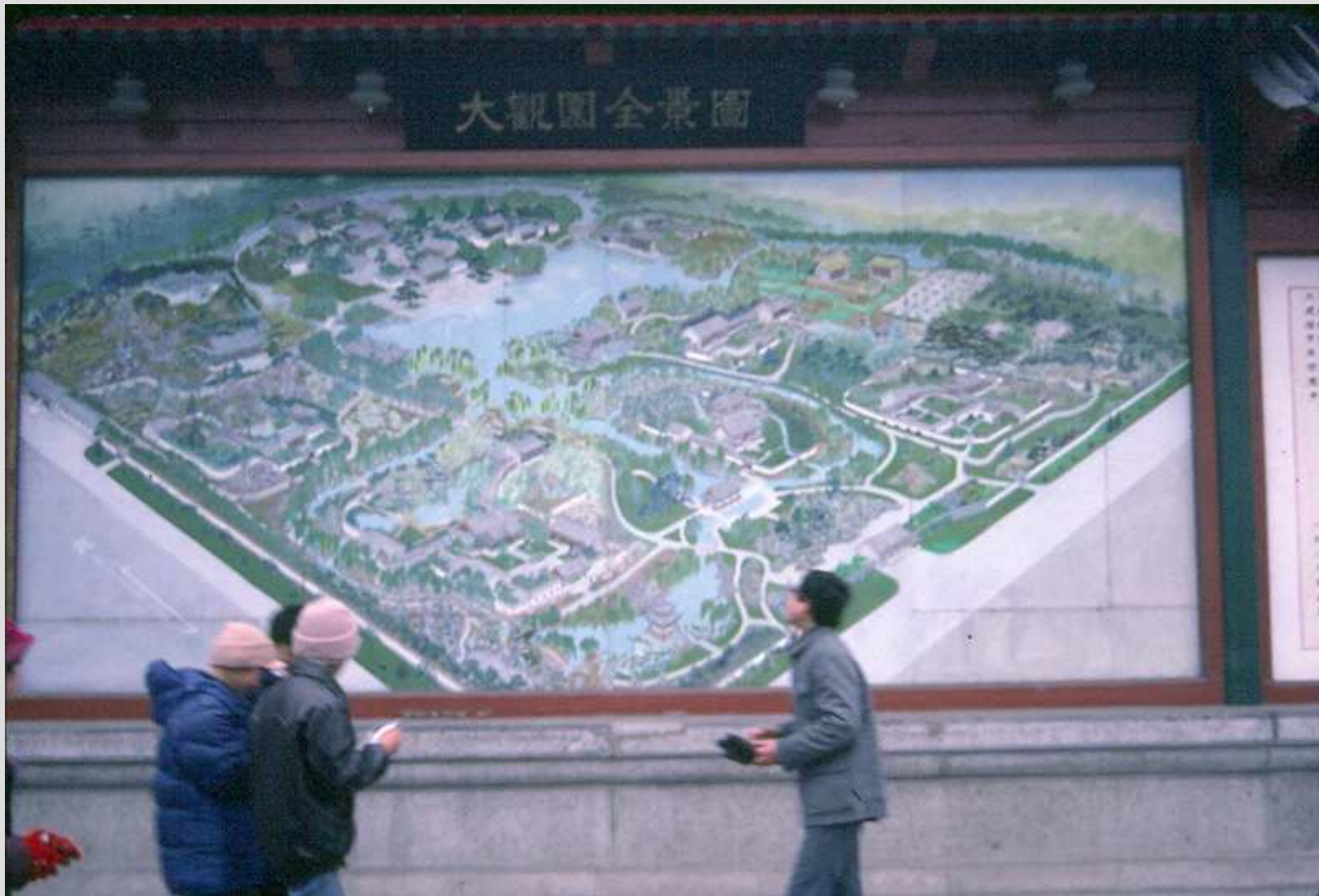
- 23 APRIL, 2007
- Beijing's oldest opera theater built during the Ming Dynasty -- is to be crushed under the onslaught of Beijing's remorseless bulldozers.
- City officials intend to replace the unsafe ancient structure with a new, state-of-the-art facility somewhere close by.
- "We intend to build a modern, professional venue like those on Broadway in the United States, where regular shows are offered all year round, and high-end performances can also take place..."



Tianjin Ancient Culture Street (1986)



Grand View Garden (Daguanyuan) -1986 Film set – Theme Park



Beijing





Xuanwu District, southwest Beijing



- a replica of Daguan Yuan - home of imperial family described in the Chinese novel:
- ***Dream of the Red Mansion***
- by Qing Dynasty writer Cao Xueqin (1715-1763).



- Beijing, Wangfujing, May 2004
- 北京王府井
- House condemned to be demolished



To be demolished , May 2004









Beijing, 'Culture Street'

next to Wangfujing, Beijing Hotel in background





CANTON



仙踪游



McDonald's



屈臣氏

負一層

PARIS WEDDING PHOTO
PARIS 巴黎婚紗

VOGUE

Lilota



IORD





招租
AD HERE
龙之悦
鸿鑫安装

麦当劳
McDonald's

纹身
TATTOO
021-77115244

麦当劳
I'm lovin' it
麦当劳

麦当劳
I'm lovin' it
麦当劳

健民医药

纯银首饰
Silver 925

361

日本料理
寿司
负一层

金达
珠宝金行

WENTON

安鹄
鞋业

ANCHOR

KFC

三星AnyCall服务中

Carrefour



家乐福



入



ENTRANCE



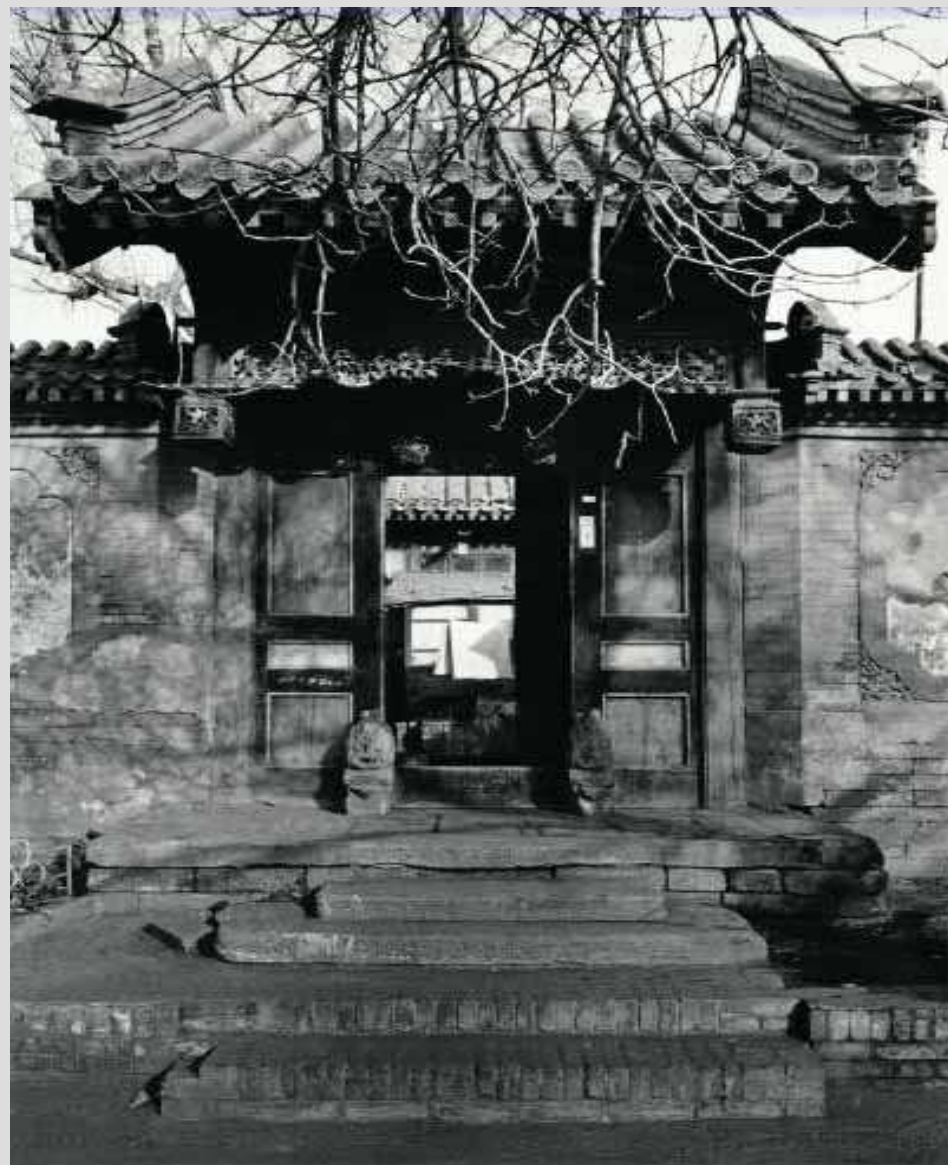


'REAL KUNG-FU'

Chinese fast food, Canton, March 2007
THE EMPIRE STRIKES BACK?

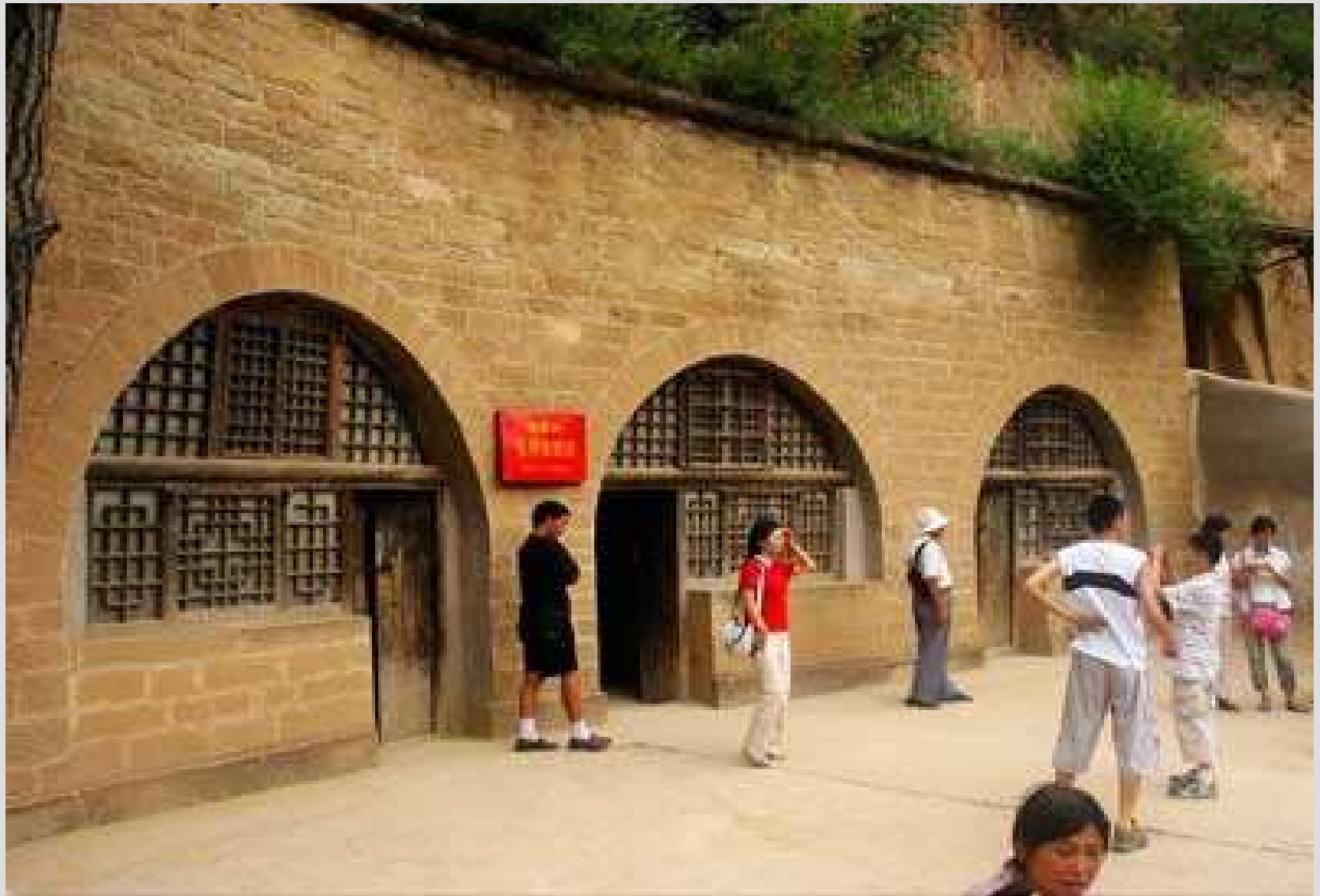


4 sided compound





Yan'an, Shaanxi caves





土楼 Tulou, Fujian





吊脚楼 Diaojiailou, Yunnan



同一个世界 同一个梦想
One World One Dream

Beijing 2008

Beijing 2008

登机口
GATES

