



**HAL**  
open science

## Migration and Interaction in a Contact Zone: mtDNA Variation among Bantu-Speakers in Southern Africa

Chiara Barbieri, Mário Vicente, Sandra Oliveira, Koen Bostoen, Jorge Rocha, Mark Stoneking, Brigitte Pakendorf

### ► To cite this version:

Chiara Barbieri, Mário Vicente, Sandra Oliveira, Koen Bostoen, Jorge Rocha, et al.. Migration and Interaction in a Contact Zone: mtDNA Variation among Bantu-Speakers in Southern Africa. PLoS ONE, 2014, 9 (6), pp.e99117. 10.1371/journal.pone.0099117 . halshs-01178666

**HAL Id: halshs-01178666**

**<https://shs.hal.science/halshs-01178666>**

Submitted on 19 Dec 2018

**HAL** is a multi-disciplinary open access archive for the deposit and dissemination of scientific research documents, whether they are published or not. The documents may come from teaching and research institutions in France or abroad, or from public or private research centers.

L'archive ouverte pluridisciplinaire **HAL**, est destinée au dépôt et à la diffusion de documents scientifiques de niveau recherche, publiés ou non, émanant des établissements d'enseignement et de recherche français ou étrangers, des laboratoires publics ou privés.



# Migration and Interaction in a Contact Zone: mtDNA Variation among Bantu-Speakers in Southern Africa

Chiara Barbieri<sup>1,2\*</sup>, Mário Vicente<sup>3,4‡</sup>, Sandra Oliveira<sup>3,5</sup>, Koen Bostoen<sup>6,7</sup>, Jorge Rocha<sup>3,5</sup>, Mark Stoneking<sup>1</sup>, Brigitte Pakendorf<sup>8\*</sup>

**1** Department of Evolutionary Genetics, MPI for Evolutionary Anthropology, Leipzig, Germany, **2** Department of Biological, Geological and Environmental Sciences, Laboratory of Molecular Anthropology, University of Bologna, Bologna, Italy, **3** CIBIO, Centro de Investigação em Biodiversidade e Recursos Genéticos da Universidade do Porto, Vairão, Portugal, **4** STAB VIDA, Investigação e Serviços em Ciências Biológicas, Lda, Oeiras, Portugal, **5** Departamento de Biologia, Faculdade de Ciências da Universidade do Porto, Porto, Portugal, **6** Department of African Languages and Cultures, Ghent University, KongoKing Research Group, Ghent, Belgium, **7** Université libre de Bruxelles, Faculté de Philosophie et Lettres, Brussels, Belgium, **8** Laboratoire Dynamique du Langage, UMR5596, CNRS and Université Lyon Lumière 2, Lyon, France

## Abstract

Bantu speech communities expanded over large parts of sub-Saharan Africa within the last 4000–5000 years, reaching different parts of southern Africa 1200–2000 years ago. The Bantu languages subdivide in several major branches, with languages belonging to the Eastern and Western Bantu branches spreading over large parts of Central, Eastern, and Southern Africa. There is still debate whether this linguistic divide is correlated with a genetic distinction between Eastern and Western Bantu speakers. During their expansion, Bantu speakers would have come into contact with diverse local populations, such as the Khoisan hunter-gatherers and pastoralists of southern Africa, with whom they may have intermarried. In this study, we analyze complete mtDNA genome sequences from over 900 Bantu-speaking individuals from Angola, Zambia, Namibia, and Botswana to investigate the demographic processes at play during the last stages of the Bantu expansion. Our results show that most of these Bantu-speaking populations are genetically very homogenous, with no genetic division between speakers of Eastern and Western Bantu languages. Most of the mtDNA diversity in our dataset is due to different degrees of admixture with autochthonous populations. Only the pastoralist Himba and Herero stand out due to high frequencies of particular L3f and L3d lineages; the latter are also found in the neighboring Damara, who speak a Khoisan language and were foragers and small-stock herders. In contrast, the close cultural and linguistic relatives of the Herero and Himba, the Kuvale, are genetically similar to other Bantu-speakers. Nevertheless, as demonstrated by resampling tests, the genetic divergence of Herero, Himba, and Kuvale is compatible with a common shared ancestry with high levels of drift, while the similarity of the Herero, Himba, and Damara probably reflects admixture, as also suggested by linguistic analyses.

**Citation:** Barbieri C, Vicente M, Oliveira S, Bostoen K, Rocha J, et al. (2014) Migration and Interaction in a Contact Zone: mtDNA Variation among Bantu-Speakers in Southern Africa. PLoS ONE 9(6): e99117. doi:10.1371/journal.pone.0099117

**Editor:** Alessandro Achilli, University of Perugia, Italy

**Received:** March 10, 2014; **Accepted:** May 11, 2014; **Published:** June 5, 2014

**Copyright:** © 2014 Barbieri et al. This is an open-access article distributed under the terms of the Creative Commons Attribution License, which permits unrestricted use, distribution, and reproduction in any medium, provided the original author and source are credited.

**Funding:** This work was funded by the Max Planck Society, by FCT Project Grant PTDC/BIA-EVF/2907/2012, by the EU FP7 REGPOT grant CIBIO-New-Gen-28643, and by the “Genomics and Evolutionary Biology” project co-financed by the North Portugal Regional Operational Programme 2007/2013 (ON.2– O Novo Norte), under the National Strategic Reference Framework (NSRF), through the European Regional Development Fund (ERDF); CB was supported by the European Research Council ERC-2011-AdG 295733 grant (Langelin); MV was supported by STAB VIDA, Investigação e Serviços em Ciências Biológicas, Lda; MV and SO were supported by the Portuguese Ministry for Science, Technology and Higher Education through PhD grants SFRH/BDE/51828/2012 and SFRH/BD/85776/2012, respectively. The funders had no role in study design, data collection and analysis, decision to publish, or preparation of the manuscript.

**Competing Interests:** MV was supported by STAB VIDA, Investigação e Serviços em Ciências Biológicas, Lda. This does not alter the authors’ adherence to PLOS ONE policies on sharing data and materials.

\* E-mail: barbieri.chiara@gmail.com (CB); brigitte.pakendorf@cnsr.fr (BP)

‡ Current address: Division of Biological Anthropology, University of Cambridge, Cambridge, United Kingdom

## Introduction

Bantu languages started to diffuse from their homeland in the Grassfields of Cameroon around 4,000–5,000 years ago, reaching the southernmost areas of the continent in only a few thousand years [1–5]. This spread, strongly associated in its later phases with the diffusion of technological advances related to metallurgy and an agricultural lifestyle, was probably the result of a long-distance migration of people who partially replaced the local forager and pastoralist populations, or intermixed with them [2,6,7]. From a linguistic perspective, the genealogical unity of the Bantu family is certain, even though its boundary with other branches of the Niger-Congo phylum is not clear-cut and the internal classification and distinction between languages and dialects is highly debated

[4,8]. The region close to the putative homeland represents the highest linguistic diversity. The first Bantu branches to split off, such as Mbam-Bubi and North-West Bantu, are confined to Cameroon and immediately neighboring regions [9]. The remainder of the Bantu languages predominantly belong to two major branches, namely Eastern Bantu and Western Bantu, which are further divided in several sub-groups. Although a recent investigation finds a distinct trace of the eastern route of the Bantu migration in Y-chromosomal variation [10], other molecular anthropological studies fail to find evidence for a genetic differentiation of the populations speaking Western and Eastern Bantu languages [11,12].

Southern Africa represents the last phase of the Bantu expansion. Archaeological data reveal traces of an agricultural way of subsistence in Namibia, Zambia and Botswana around 2000–1200 years ago [1,13,14], which was preceded by a few centuries by an immigration of pastoralist cultures [15,16]. Thus, in these areas, the presumably Bantu-speaking agriculturalist immigrants would have met both populations of hunter-gatherers as well as pastoralists, whose descendants comprise the linguistically, culturally, and genetically diverse “Khoisan” populations [17,18].

The Bantu-speaking populations nowadays inhabiting southern Africa are quite diverse linguistically and culturally, comprising pastoralists, agro-pastoralists, and agriculturalists who speak languages belonging to several different subgroups of both Eastern and Western Bantu; these populations share the same territory and are often involved in trade. From a genetic perspective, these populations appear to be relatively homogenous, with little differences even among linguistically distinct populations [6,11,12,19]. The main genetic signal characterizing the people at the southernmost edges of the Bantu expansion is the degree of admixture with the autochthonous populations; this can be explicitly measured by the presence of the characteristic mtDNA haplogroups L0d and L0k and Y-chromosomal haplogroups A-M51, A-M23, and B-M112 [20–22]. Admixture with autochthonous peoples in Bantu-speaking populations is detectable predominantly in the maternal line, in accordance with sex-biased gene flow [20,23]. The level of admixture differs considerably among populations; in particular, substantial proportions of mtDNA haplogroups L0d and/or L0k are observed in the pastoralist Kuvale from southwestern Angola [21], in the Fwe of southwestern Zambia [20], and in the Zulu and Xhosa from South Africa [24]. In contrast, in populations from eastern Zambia, Zimbabwe, and Mozambique these characteristic autochthonous haplogroups are found at a frequency of at most 3% [19,25,26].

Among the culturally distinct populations in southern Africa are the Herero, Himba, and Kuvale from northern Namibia and southern Angola, who speak dialects of the same Bantu language and practice intensive semi-nomadic cattle pastoralism. The Herero and Himba appear genetically distinct from other Bantu-speaking populations of the area, including the culturally similar Kuvale [17,21,27,28]. Genetically, the closest relatives of the Herero and Himba are the Damara [17,18], hunter-gatherers and small stock herders who speak a Khoisan language of the Khoekwadi family [29]. Intriguingly, the Herero were known as “Cattle Damara” and the Damara were referred to as “Berg Damara” in previous literature [29].

In this study we analyze complete mtDNA genome sequences of 944 Bantu-speaking individuals from Angola, Zambia, Namibia, and Botswana to investigate the maternal genetic history of Bantu speakers of southern Africa. We also include 38 Damara mtDNA genome sequences to further investigate the close genetic relationship between the Herero, Himba, and Damara that emerged in previous research [18]. We focus on the following research questions: 1) does the linguistic division into Western and Eastern Bantu correlate with genetic divergence? 2) To what extent did the immigrating Bantu-speaking agriculturalists intermarry with autochthonous populations? 3) What factors can explain the genetic divergence between the culturally and linguistically closely related Himba, Herero, and Kuvale on the one hand, and the genetic proximity of the Himba and Herero to the culturally and linguistically very distinct Damara? Our results reveal a general homogeneity of the maternal lineages of Bantu speakers of Angola and Zambia and suggest different demographic

histories for the Herero, Himba and Damara from Namibia as well as for Bantu-speaking populations of southern Botswana.

## Materials and Methods

### Ethics Statement

This study was approved by the Ethics Committee of the University of Leipzig, the Research Ethics Committee of the University of Zambia and Namibia’s Provincial Health Department. Published samples from Botswana and Namibia come from a sample collection authorized by the governments of Botswana and of Namibia (Research permit CYSC 1/17/2 IV (8) from the Ministry of Youth Sport and Culture of Botswana, and 17/3/3 from the Ministry of Health and Social Services of Namibia). Samples from several populations of southwestern Angola were collected as described by [21]. Each individual gave written consent after the purpose of the study was explained with the help of local translators. Individuals were assigned to populations according to the ethnolinguistic affiliation (i.e., primary language spoken) of their maternal grandmother, as declared during sample collection.

### Samples and mtDNA Sequence Data

Details on the samples and DNA extraction are given in [12,17,20,21]. Full mtDNA sequence data were generated from genome libraries tagged with either single or double indexes, and enriched for mtDNA following protocols described previously [30,31]. The libraries were sequenced on the Illumina GAIIx (Solexa) platform, using either single or paired end runs of 76 bp length, resulting in an average coverage of ~400x. Sequences were manually checked with Bioedit ([www.mbio.ncsu.edu/BioEdit/bioedit.html](http://www.mbio.ncsu.edu/BioEdit/bioedit.html)) and read alignments were screened with *ma* [32] to confirm indels. To minimize the impact of missing data, we applied imputation using stringent criteria, replacing missing sites with the nucleotide that was present in at least two otherwise identical haplotypes of the dataset. Before imputation, 47 individuals presented missing data (8.4% of the total number of sequences, with a maximum of four sites with missing data per individual); after imputation, the number of individuals with missing data was reduced to 23 (3.7% of the total number of sequences, with a maximum of three sites with missing data per individual), with a total of 26 missing sites imputed.

One hundred and ninety seven sequences from Botswana, Namibia, and Angola were previously included in studies focusing on haplogroups L0d and L0k as well as on the prehistory of Khoisan populations [18,33], while a subset of 169 sequences from Zambia were included in [20]; the GenBank accession numbers of these samples can be found in Table S1. The remaining 446 sequences from Zambia and 170 sequences from Angola have not yet been reported and are available from GenBank with accession numbers KJ185394–KJ186009. The final alignment consists of 982 sequences of 16465 bp. Positions with missing data as well as the poly-C-regions (np 303–315, 16183–16194) were removed from all analyses; in addition, 45 positions with indels were removed from all analyses run in Arlequin and from sequences used for network construction.

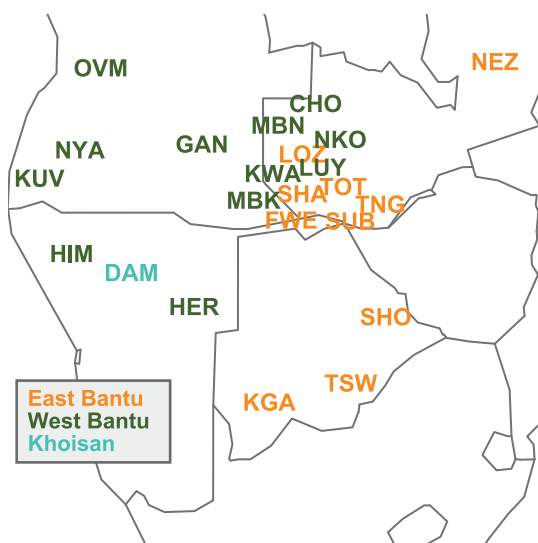
Our dataset includes speakers of several Bantu languages belonging to both the Western and the Eastern branches of Bantu according to the classification found on Glottolog 2.2 (<http://glottolog.org/>). While we were able to group most of the samples into 17 ethnolinguistically homogenous populations that correspond to the identification of donors’ maternal grandmothers, some ethnolinguistic groups were represented by only a few individuals. In these cases, we united samples in five aggregate

“populations” of speakers of closely related varieties based mainly on linguistic criteria, but ensuring that the resulting populations were genetically homogeneous as shown by non-significant between-population variance in AMOVA analyses and non-significant  $\Phi_{ST}$  distances (see Table S1 for the ethnolinguistic affiliation of each individual and the composition of the aggregate “populations”). In addition, 49 individuals sampled in Namibia and Zambia could not be grouped into populations with a meaningful sample size or had an unclear ethnic affiliation; these were labeled as “others” and included only in lineage-based analyses (i.e. networks and phylogenetic trees). Table S1 provides details on the country of sampling, ethnolinguistic affiliation, and GenBank accession number for each sample. We also included the Damara, who speak a Khoe language rather than a Bantu language, because of their known genetic proximity to Herero and Himba [17,18]. The rough geographic location of the 23 populations included in the study can be seen in Figure 1, while Table 1 summarizes the information on their country of origin, linguistic affiliation, and subsistence.

To investigate the variation in haplogroups L3d and L3f we further included published data from African populations: for the visual depiction in Surfer maps, haplogroup frequency data was collected from the literature as summarized in Table S2, while for networks and BEAST runs, 28 published complete mtDNA genome sequences available from GenBank were added to the alignment [34–38].

### Statistical Analyses

Haplogroup assignment was performed with the online tool Haplogrep [39]. Haplogroup affiliation of individuals belonging to haplogroup L0d and L0k was further defined following the nomenclature reported in [33] (see Table S1). Analyses of Molecular Variance (AMOVA), values of sequence diversity, and matrices of pairwise  $\Phi_{ST}$  values were computed in Arlequin ver. 3.11, while values of nucleotide diversity and variance were calculated in R with the package Pegas [40]. A correspondence analysis (CA) based on haplogroup frequencies was performed with the package ca [41], and non-metric Multi-Dimensional Scaling (MDS) analyses based on pairwise  $\Phi_{ST}$  values were



**Figure 1. Map showing the rough geographical location of populations, colored by linguistic affiliation.** Abbreviations of population labels are as specified in Table 1. doi:10.1371/journal.pone.0099117.g001

performed with the function “isoMDS” from the package MASS [42]. The Africa-wide variation in frequency of haplogroups L3d and L3f was visualized on a map with the software Surfer ver. 10.4.799 (Golden Software Inc.). Median-joining networks [43] with no pre- or post-processing steps were computed with Network 4.11 (www.fluxus-engineering.com) and visualized in Network publisher 1.3.0.0. For the networks of haplogroups L3d and L3f all sites were given equal weights, while for the network of haplogroup L0d the hypervariable positions were downweighted by one third in order to reduce the effect of reticulation. A Mantel test was performed between genetic ( $\Phi_{ST}$ ) and geographic distances with the R package vegan [44]; geographic distances between populations were averaged over GPS data from the individual sampling locations with the function `rdist.earth` of the package `fields` [45].

BEAST (v1.7.2; [46]) was used to construct Bayesian Skyline Plots and phylogenetic trees, based on the complete mtDNA sequence and using the mutation rate of  $1.665 \times 10^{-8}$  from Soares et al. [47]. A Generalized Time Reversible model was applied, and multiple runs were performed for each dataset, using 10, 20 or 30 million chains for single haplogroups and populations. For the schematic tree of the whole dataset 40 million chains and a GTR mutation model were used. The most probable tree from the BEAST runs was assembled with TreeAnnotator and drawn with FigTree v 1.4.0.

Resampling tests were performed in R to investigate the possible shared ancestry of the Herero, Himba, and Damara on the one hand, and the Herero, Himba, and Kuvale on the other, notwithstanding the absence of haplogroup L3f in the Damara and the absence of L3d in the Kuvale and the concomitant high frequencies of these haplogroups in the Herero and Himba. In both cases we proceeded as follows: the Herero and the Himba were considered a single population with a sample size of 51 individuals, while for the Damara and Kuvale we used the actual sample sizes included in the study (i.e. 38 and 53 individuals, respectively). We then created a series of hypothetical ancestral populations with  $N_e = 2000$  and a number of marked individuals corresponding to a range of frequencies of the haplogroup of interest. This ancestral population was split into two daughter populations with  $N_e = 1000$  (one population corresponding to the Himba/Herero and the other corresponding to the Damara or the Kuvale). From these we consecutively sampled the same number of individuals with replacement (i.e. the population size was kept constant) for a number of generations proportional to 500, 1000, or 2000 years (with a generation time of 25 years). After the final resampling step, a number of individuals corresponding to the population samples of interest (i.e. 53 for Kuvale, 51 for Himba/Herero, or 38 for Damara) were sampled 100 times from the two daughter populations, and the probability of having a frequency of the haplogroup of interest within the range of the respective confidence intervals for both populations simultaneously was recorded. The entire process was repeated 10,000 times for each initial haplogroup frequency tested and each of the three split times considered, and the average probabilities were recorded in a table. No migration was considered in any of the simulations. The procedure is further described in the Results section, and the R script used to perform the simulations is available upon request from the authors.

## Results

### Genetic Structure of Southern African Bantu-speakers

As can be seen from Table S3 and Figure S1 in File S1, haplogroups found in relatively high frequency across most of the populations of the dataset are L0a, L1c, L2a, and L3e. Other

**Table 1.** List of populations included in the study with their linguistic affiliation, geographic location, and values of genetic diversity.

| Population                           | Country of Sampling | Code | Linguistic Affiliation | Subsistence         | N   | n  | S   | seq div | SD   | $\pi$  | SD       |
|--------------------------------------|---------------------|------|------------------------|---------------------|-----|----|-----|---------|------|--------|----------|
| Nyaneka                              | Angola              | NYA  | West Bantu             | agropastoralist     | 59  | 50 | 481 | 0.99    | 0.00 | 0.0037 | 1.80E-03 |
| Ovimbundu                            | Angola              | OMV  | West Bantu             | agriculturalist     | 60  | 53 | 494 | 1.00    | 0.00 | 0.0036 | 1.73E-03 |
| Ngangela <sup>1</sup>                | Angola              | GAN  | West Bantu             | agriculturalist     | 20  | 16 | 290 | 0.97    | 0.03 | 0.0040 | 2.02E-03 |
| Chokwe, Luchazi, Luvale <sup>2</sup> | Zambia              | CHO  | West Bantu             | agriculturalist     | 33  | 32 | 319 | 1.00    | 0.01 | 0.0038 | 1.88E-03 |
| Mbunda                               | Zambia              | MBN  | West Bantu             | agriculturalist     | 67  | 55 | 551 | 0.99    | 0.01 | 0.0038 | 1.84E-03 |
| Kuvale                               | Angola              | KUV  | West Bantu             | pastoralist         | 53  | 29 | 369 | 0.95    | 0.02 | 0.0040 | 1.93E-03 |
| Herero                               | Namibia             | HER  | West Bantu             | pastoralist         | 30  | 20 | 160 | 0.94    | 0.03 | 0.0022 | 1.12E-03 |
| Himba                                | Namibia             | HIM  | West Bantu             | pastoralist         | 21  | 13 | 147 | 0.93    | 0.04 | 0.0022 | 1.11E-03 |
| Kgalaagadi                           | Botswana            | KGA  | East Bantu             | agropastoralist     | 19  | 15 | 205 | 0.97    | 0.03 | 0.0033 | 1.68E-03 |
| Tswana                               | Botswana            | TSW  | East Bantu             | agropastoralist     | 20  | 19 | 188 | 0.99    | 0.02 | 0.0034 | 1.72E-03 |
| Wider Shona <sup>2</sup>             | Botswana            | SHO  | East Bantu             | agriculturalist     | 20  | 20 | 317 | 1.00    | 0.02 | 0.0040 | 2.03E-03 |
| Lozi                                 | Zambia              | LOZ  | East Bantu             | agriculturalist     | 118 | 94 | 613 | 0.99    | 0.00 | 0.0037 | 1.80E-03 |
| Kwamashi                             | Zambia              | KWA  | West Bantu             | agriculturalist     | 35  | 27 | 319 | 0.97    | 0.02 | 0.0036 | 1.76E-03 |
| Mbukushu                             | Zambia              | MBK  | West Bantu             | agriculturalist     | 23  | 21 | 316 | 0.99    | 0.02 | 0.0038 | 1.91E-03 |
| Shanjo                               | Zambia              | SHA  | East Bantu             | agriculturalist     | 25  | 18 | 299 | 0.97    | 0.02 | 0.0038 | 1.89E-03 |
| Wider Luyana <sup>2</sup>            | Zambia              | LUY  | West Bantu             | agriculturalist     | 106 | 83 | 545 | 0.99    | 0.00 | 0.0036 | 1.72E-03 |
| Nkoya                                | Zambia              | NKO  | West Bantu             | agriculturalist     | 32  | 25 | 323 | 0.98    | 0.01 | 0.0036 | 1.78E-03 |
| Eastern Tonga <sup>2</sup>           | Zambia              | TNG  | East Bantu             | agriculturalist     | 48  | 47 | 444 | 1.00    | 0.00 | 0.0038 | 1.86E-03 |
| Fwe                                  | Zambia              | FWE  | East Bantu             | agriculturalist     | 33  | 20 | 292 | 0.93    | 0.03 | 0.0038 | 1.87E-03 |
| Subiya                               | Zambia              | SUB  | East Bantu             | agriculturalist     | 20  | 17 | 229 | 0.98    | 0.02 | 0.0035 | 1.78E-03 |
| Totela                               | Zambia              | TOT  | East Bantu             | agriculturalist     | 29  | 25 | 306 | 0.99    | 0.01 | 0.0036 | 1.78E-03 |
| Northeast Zambia <sup>2</sup>        | Zambia              | NEZ  | East Bantu             | agriculturalist     | 24  | 23 | 334 | 1.00    | 0.01 | 0.0038 | 1.91E-03 |
| Damarra                              | Namibia             | DAM  | Khoisan                | forager/small stock | 38  | 20 | 250 | 0.89    | 0.04 | 0.0025 | 1.23E-03 |

<sup>1</sup>In previous work (Coelho et al. 2009), the Ngangela were called Ganguela.

<sup>2</sup>Aggregate populations: ethnolinguistic affiliation of each individual can be traced in Table S1.

code = abbreviation used in figures; N = sample size; n = number of haplotypes; S = number of segregating sites; seq div = sequence diversity; SD = standard deviation;  $\pi$  = nucleotide diversity.  
doi:10.1371/journal.pone.0099117.t001

haplogroups, however, are more restricted, being found in only a few populations; of these, L3d and L3f (discussed in detail below) show a particularly striking distribution, being found in very high frequency only in the populations of Namibia.

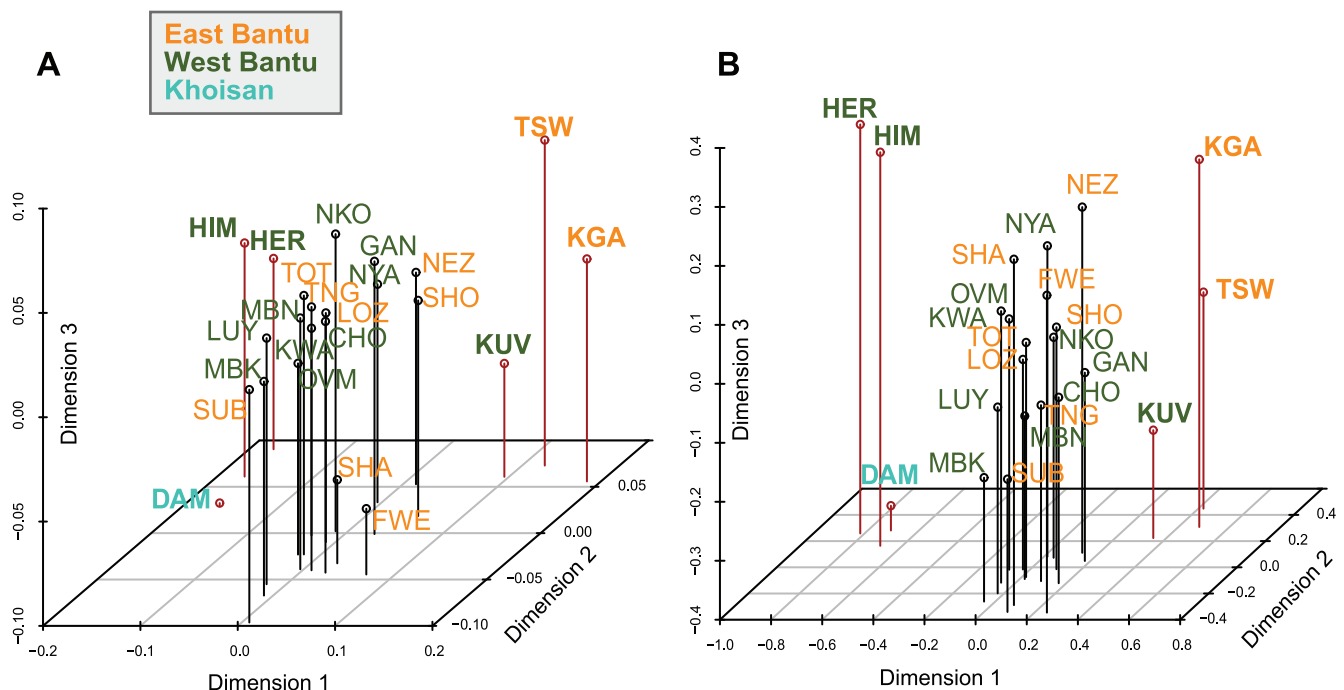
There is very little discernible structure in the maternal genepool of the Bantu-speaking populations of southern Africa, as shown by a three-dimensional MDS analysis. Only two distinct groups of populations emerge (Figure 2A): the Himba, Herero, and the non-Bantu-speaking Damara from Namibia on the one hand, and the Kuvale from Angola as well as the Tswana and Kgalagadi from Botswana on the other hand; the Tswana and Kgalagadi are separated from their geographic neighbors the Wider Shona. The third dimension, however, splits the Damara from the Himba and Herero. It is notable that the Kuvale are closer to other Bantu-speaking groups than to the Himba and the Herero, who are genetically more similar to the Khoespeaking Damara in spite of being culturally and linguistically related to the Kuvale.

Haplogroups L0d and L0k are known to be an introgression from autochthonous populations [18,24,33,35] and are thus indicative of post-immigration contact rather than reflecting the genetic relationships among Bantu-speakers themselves; the differential effects of gene flow from autochthonous populations are addressed below. When excluding these clearly introgressed lineages from the MDS analysis, the same two distinctive groups of populations, namely the Kuvale, Tswana, and Kgalagadi, and the Himba, Herero, and Damara, emerge in an even more pronounced manner, with the third dimension again separating the Damara from the Himba and Herero; all the other Bantu-speaking populations, in contrast, cluster very closely (Figure 2B).

As can be seen in the CA plots displayed in Figure S2 in File S1, the distinct position of the Himba, Herero and Damara populations is driven by their high levels of haplogroup L3d (Figure S2A in File S1), which is completely absent from the

Kuvale (Table S3). In contrast, the Tswana and Kgalagadi, who stand out in the MDS analysis, are no longer separated in these CA plots, suggesting that their separate position in the MDS plots is mainly due to divergent sequence types rather than a distinct haplogroup composition. The CA plots additionally highlight other aspects of the data, separating the Northeast Zambia population (characterized by the presence of the otherwise largely absent haplogroups L0f and L4) or the Fwe and Shanjo, who have high frequencies of haplogroup L0k (Figure S2A in File S1). When excluding these outliers, populations with very high frequencies of haplogroup L0d (Kgalagadi, Tswana, Wider Shona, and Kuvale) stand out (Figure S2B in File S1). The influence of different levels of admixture with autochthonous populations on the genetic structure of the southern African Bantu-speaking groups is additionally illustrated by the lack of discernible clusters when the introgressed haplogroups L0d and L0k are excluded (Figure S2C in File S1).

The difference of the Himba, Herero, and Damara from the other populations included in this study also becomes apparent from measures of genetic diversity (Table 1): while diversity is high for the Bantu-speaking populations in general, with many of the ethnolinguistically defined self-identified groups (e.g. Nyaneka, Ovimbundu, Kwamashi, Mbukushu) having values of sequence diversity of 0.99–1.00, and with nucleotide diversity ranging between 0.0033 and 0.0040, the Himba, Herero and Damara stand out in having both very low sequence diversity (0.93, 0.94, and 0.89, respectively) and nucleotide diversity (0.0022 for the Herero-speakers, 0.0025 for the Damara). The Kuvale again differ from the other Herero-speakers: although their sequence diversity is relatively low (0.95), their nucleotide diversity is twice as high as that of their linguistic and cultural relatives (0.0040); this diversity pattern resembles that of the Fwe from southwestern Zambia, who have a sequence diversity of only 0.93, but nucleotide diversity of 0.0038.



**Figure 2. Three-dimensional MDS analysis based on pairwise  $\Phi_{ST}$  values between populations.** Color coding by linguistic affiliation; abbreviations of population labels are as specified in Table 1. A. Including all sequences, stress=5.35 B. Excluding L0d and L0k sequences, stress=5.34. Populations discussed in the main text are highlighted with bold font and a red line in the plot. doi:10.1371/journal.pone.0099117.g002

An Analysis of Molecular Variance (Table 2) demonstrates the relative lack of differentiation among the southern African populations, with only ~6% of the variation being found between populations, irrespective of whether haplogroups L0d and L0k, which stem from post-immigration admixture, are included or not. A large proportion of the variance between populations is due to the differentiation of the Himba, Herero, and Damara, as shown by the fact that the between-population variance drops to ~3% when excluding these populations. Affiliation to either of the two major branches of the Bantu family (Eastern Bantu vs. Western Bantu) does not account for any genetic structure, as seen by the complete absence of variance between groups. The three pastoralist populations Herero, Himba, and Kuvale, are somewhat distinct from the non-pastoralist Bantu-speaking populations, as shown by the significant between-group variance of 2.6% and 3.5%, respectively, depending on whether haplogroups L0d and L0k are included in the analysis or not. Nevertheless, the genetic variation of the populations included in the “pastoralist” and “non-pastoralist” grouping is higher than that between the groups. Only a rough geographic subdivision correlates with some degree of genetic structure: in this case the between group variance rises to ~5% (as opposed to a within group variance of ~1.7%). On a finer scale, too, the pairwise geographic distances correlate with the genetic distances: a Mantel test gives significant correlations both when including and excluding L0d and L0k sequences ( $r = 0.3286/p = 0.015$  and  $r = 0.2575/p = 0.043$ , respectively).

**Haplogroups L0d and L0k**

The mtDNA haplogroups L0d and L0k have been convincingly shown to be characteristic of autochthonous populations of southern Africa [18,24,35]. They therefore represent an ideal measure for detecting admixture in the maternal line between the immigrating Bantu-speaking groups and these autochthonous populations. The frequency of these haplogroups ranges from complete absence in some of the populations of Zambia to 53% in the Kgalagadi of southern Botswana (Table S3, see Figure S3A in File S1 for a graphic representation of the distribution of L0d and

L0k lineages in the populations considered here). Interestingly, hardly any of the L0d and L0k sequences found in the Bantu-speaking populations are directly shared with extant Khoisan foragers or pastoralists. As shown previously [33], the L0k sequences found in Bantu-speaking populations diverge considerably from those found in extant Khoisan populations. With respect to haplogroup L0d, as shown by the network only three Bantu-speaking populations (involving four Herero, two Tswana, and one Kgalagadi individual) share sequences directly with Khoisan (Figure 3). Three branches of the network are found nearly exclusively in Bantu-speaking populations: one of these (belonging to subhaplogroup L0d1a and indicated by arrow 1 in Figure 3) is derived from a sequence type restricted to Khoe-speaking Shua from northeastern Botswana and is found in Kuvale and Himba, with one Kuvale type shared with Nyaneka. The two others (belonging to subhaplogroup L0d1b1 and indicated by arrow 2 and 3 in the figure) are at least 11 mutations distant from the closest Khoisan haplotype; the eight divergent haplotypes found on these branches again belong to Kuvale as well as to different populations of Zambia and Angola. The only population found in this branch that does not speak a Bantu language is the Damara.

**Haplogroups L3d and L3f**

The Himba and Herero stand out among the Bantu-speaking populations of southern Africa in having very high frequencies of haplogroups L3d (38% and 47%, respectively) and L3f (29% and 33%, respectively), while in their cultural and linguistic relatives, the Kuvale, L3d is absent and L3f has a frequency of only 6% (Table S3). In contrast, the geographic neighbors of the Himba and Herero, the Khoe-speaking Damara, have 63% L3d but completely lack L3f (cf. Table S3). The high levels of these two haplogroups are thus clearly of key importance for understanding the prehistory of the Herero, Himba, Kuvale, and Damara populations.

While haplogroup L3d is found across Africa at low frequency (Figure 4A, see Table S2 for the populations included in the Surfer map), the lineages found at high frequency in southwestern Africa

**Table 2.** Results of AMOVA analyses.

|  | n of groups | between groups | between pops (within groups) | within pops |
|--|-------------|----------------|------------------------------|-------------|
| <b>a) Including haplogroups L0d/L0k</b>                              |             |                |                              |             |
| All 23 populations   | 1           |                | 5.51**                       | 94.49       |
| 20 populations (excl. HER, HIM, DAM)                                 | 1           |                | 3.22**                       | 96.78       |
| Linguistic criteria (West vs East Bantu) <sup>a</sup>                | 2           | -0.14          | 4.72**                       | 95.42       |
| Subsistence criteria (Pastoralists vs non-pastoralists) <sup>a</sup> | 2           | 2.64*          | 3.97**                       | 93.39       |
| Geographic Criteria (NW, SW, SE, Centre, NE) <sup>b</sup>            | 5           | 4.80**         | 1.77**                       | 93.43       |
| <b>b) Excluding haplogroups L0d/L0k</b>                              |             |                |                              |             |
| All 23 populations   | 1           |                | 5.94**                       | 94.06       |
| 20 populations (excl. HER, HIM, DAM)                                 | 1           |                | 2.58**                       | 97.42       |
| Linguistic criteria (West vs East Bantu) <sup>a</sup>                | 2           | -0.33          | 4.85**                       | 95.48       |
| Subsistence criteria (Pastoralists vs non-pastoralists) <sup>a</sup> | 2           | 3.50*          | 3.83**                       | 92.67       |
| Geographic Criteria (NW, SW, SE, Centre, NE) <sup>b</sup>            | 5           | 5.31**         | 1.64**                       | 93.06       |

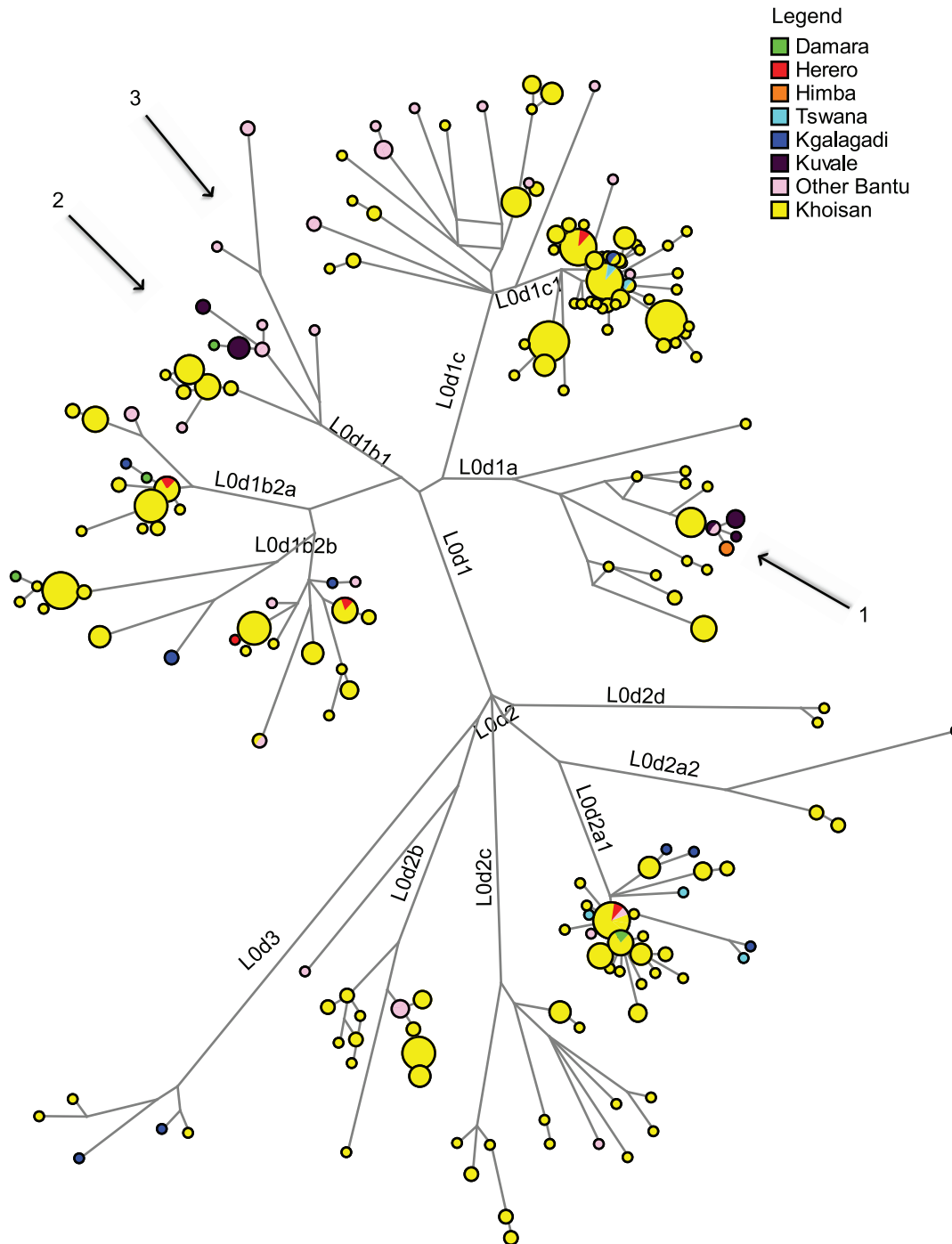
\*significant at 0.05 level; \*\*significant at 0.01 level.

<sup>a</sup>The grouping by linguistic and subsistence criteria followed the assignment in Table 1.

<sup>b</sup>Geographic grouping: NW = OVM, NYA, KUV, GAN; SW = HER, HIM; SE = KGA, TSW, SHO; NE = NEZ; CENTRE = CHO, MBN, NKO, LOZ, LUY, KWA, SHA, MBK, TOT, FWE, SUB, TNG.

Note: The groupings by linguistic, subsistence, and geographic criteria were performed without the Damara, as these cannot be assigned to the linguistic grouping West Bantu or East Bantu.

doi:10.1371/journal.pone.0099117.t002



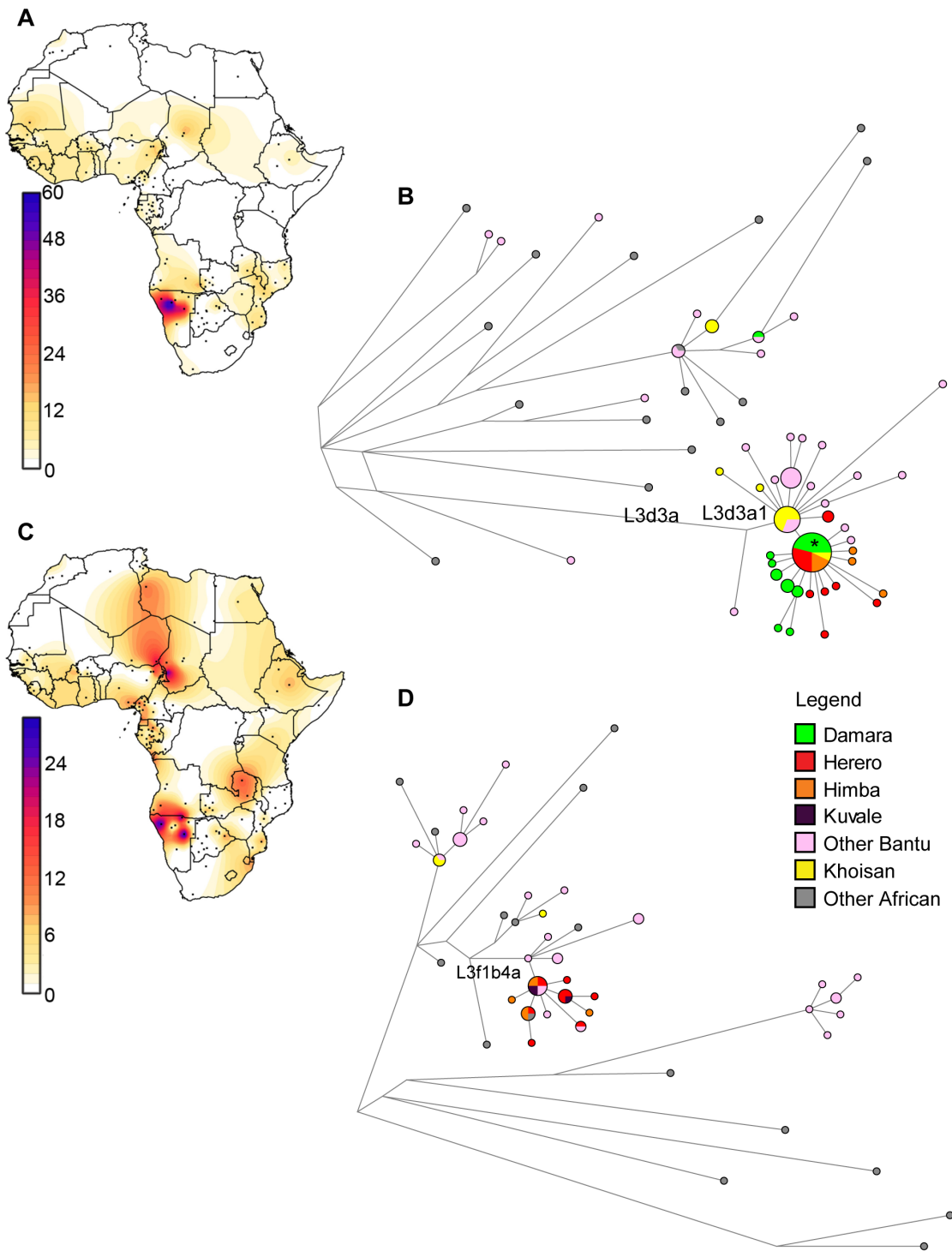
**Figure 3. Network of complete mtDNA genome sequences from southern Africa belonging to haplogroup L0d.** Branches highlighted by arrows are discussed in the text. Only sublineages of L0d2a1, L0d1b2a, L0d1b2b and L0d1c1 are shared directly between Bantu-speaking and Khoisan-speaking populations.  
doi:10.1371/journal.pone.0099117.g003

mostly belong to a single, highly divergent branch, namely L3d3a1 (Figure 4B, Figure S3B in File S1). This can be further divided into two clusters: one major node predominating in Khoisan, from which several haplotypes found in Zambian populations radiate, and a derived starlike cluster found mainly in the Himba, Herero, and Damara (indicated by an asterisk in Figure 4B). Dating the signal of expansion detectable in the L3d3a1 branch with the rho statistic [48] and the calculator from Soares et al. [47] gives an age

of 395–6668 years BP, while the expansion detectable in the Himba, Herero, and Damara dates to 711–2130 BP. The first date is in good accordance with the pronounced branching dating to 2,500–3,000 years ago in a Bayesian tree of L3d sequences (highlighted in Figure S4A in File S1).

In contrast to L3d, L3f is found in frequencies >20% not only in southwestern Africa, but also in some populations of the Cameroon/Chad border areas ([49,50]; Figure 4C, Table S2).





**Figure 4. Surfer maps and networks of haplogroups L3d and L3f.** A: Surfer map of L3d frequencies in Africa. B: Network of African complete mtDNA genome sequences belonging to haplogroup L3d. C: Surfer map of L3f frequencies in Africa. D: Network of African complete mtDNA genome sequences belonging to haplogroup L3f. doi:10.1371/journal.pone.0099117.g004

Nevertheless, the sequences found in the Himba and Herero all fall onto one restricted branch L3f1b4a (Figure 4D, Figure S3B in File S1). Several other Bantu-speaking populations from Namibia and Angola fall into this cluster as well, and the Himba and Herero share two haplotypes with their cultural and linguistic relatives, the Kuvale. This cluster exhibits a signal of expansion

which can be dated with the rho statistic to between 526 and 4234 years BP; this corresponds to a pronounced branching 2,500–3,000 years ago in the Bayesian tree of L3f sequences (highlighted in Figure S4B in File S1).

The Damara, who have the highest frequency of L3d and who share a highly frequent L3d haplotype with the Herero and

Himba, entirely lack L3f. This finding is compatible with two scenarios: 1) The mtDNA pool of the Damara, the Himba, and Herero is derived from a single ancestral population, and haplogroup L3f was lost in the Damara due to genetic drift. 2) The Damara mtDNA lineages stem from a different ancestral population than the Himba and Herero, and the Himba and Herero incorporated large amounts of haplogroup L3d sequences through gene flow from Damara (a scenario that has been suggested from analyses of linguistic data [51]). In order to distinguish between these hypotheses, we performed resampling tests, assuming a frequency of 31% L3f (with 95% confidence intervals (C.I.) 19–46%) in the Himba/Herero as well as 24% of the single L3d3a haplotype shared with the Damara (C.I. 13–37%). For the Damara, a lack of haplogroup L3f (C.I. 0–9%) and 32% of the L3d3a haplotype shared with Himba and Herero (C.I. 18–49%) was assumed. In addition, in the resampling test in which we tried to assess the probability that the Himba, Herero, and Damara would have retained a single shared haplotype at high frequency, we included a probability of change of the L3d3a haplotype each generation with a rate of one mutation every 3533 years following the rate of Soares et al. [47] for the full mtDNA genome. As can be seen from Table 3, the presence of the L3d haplotype shared at high frequency by the Himba, Herero, and Damara is expected with a probability  $>0.05$  even after a split of 2000 years if the frequency of this haplotype in the ancestral population ranged from  $\sim 10$ –50%. Conversely, if haplogroup L3f was present in the ancestral population at a frequency of  $\sim 5$ –30%, it could have drifted to high frequency in the Himba and Herero and subsequently been lost in the Damara if the split took place 2000 years ago. Thus, the scenario of shared ancestry of Damara, Himba and Herero with subsequent loss through drift in the Damara of haplogroup L3f cannot be excluded.

It is likewise intriguing that the culturally and linguistically closely related Herero, Himba, and Kuvale have such divergent mtDNA genepools. This might be explained in two ways: 1) these populations stem from a common ancestral population, and differential gene flow led to their strong divergence; 2) these populations have distinct maternal ancestors and their cultural and linguistic relationship is due to a shift in language and culture. These two alternatives were also assessed with a resampling test, assuming a frequency of 31% L3f (with 95% confidence intervals (C.I.) 19–46%) and 43% haplogroup L3d (C.I. 29–58%) in the Himba/Herero and a frequency of 5.7% L3f (C.I. 1–16%) and a lack of haplogroup L3d (C.I. 0–7%) in the Kuvale. As can be seen from Table 3, the hypothesis of a shared ancestor who carried both L3f and L3d is not compatible with the data: even though haplogroup L3f could have drifted to the observed frequencies if its frequency in the ancestral population ranged from  $\sim 8$ –31%, haplogroup L3d could not have been simultaneously lost from the Kuvale and drifted to the high frequencies currently observed in the Himba and Herero.

## Discussion

### Genetic Diversity of Bantu-speaking Populations and Western-Eastern Bantu Division

Overall, the Bantu-speaking populations of southern Africa are genetically quite homogenous, with a few exceptions such as the Herero and Himba or Tswana and Kgalagadi. While linguistically the populations can be divided into those speaking Western Bantu languages and those speaking Eastern Bantu languages, this division is not detectable in the maternal genepool, with none of the variance among populations corresponding to this linguistic grouping (Table 2). Furthermore, the amount of haplotypes shared

between Eastern and Western Bantu speakers does not differ from the amount of haplotypes shared within each linguistic group: 51 of 258 haplotypes are shared among Eastern Bantu speakers, 80 of 381 haplotypes are shared among Western Bantu speakers, and 52 haplotypes are shared between Eastern and Western Bantu speakers. These results are in good accordance with a previous study [11] and support the suggestion that any potential genetic signal of the split between Eastern and Western populations was subsequently erased through admixture [52]. An alternative explanation for the lack of genetic differentiation between the populations speaking West and East Bantu languages is their possibly quite recent split, since East Bantu languages might be an offshoot of West Bantu languages [52]. Furthermore, the so-called Urewe pottery, the first Early Iron Age ceramic tradition of the Great Lakes region, is often linked with the arrival and spread of Bantu speakers in Eastern Africa [1]. The date of its emergence around 2500 years BP [53,54] can thus serve as an approximate starting point of the Eastern Bantu dispersal [55].

Nevertheless, within the homogenous mtDNA landscape of southern African Bantu-speakers some populations do stand out. The most notable outliers are the Herero and Himba (discussed in detail below); apart from these, the Kgalagadi and Tswana as well as Northeast Zambia are separated in the MDS and CA analysis, respectively. The Tswana and Kgalagadi are characterized by very high frequencies of haplogroup L0d, which provides good evidence for extensive admixture in the maternal line with autochthonous populations (Figure S3A in File S1). Nevertheless, this high level of indigenous admixture is not the only reason for their distinctiveness, since they remain separate from other populations in the MDS analysis even when haplogroups L0d and L0k are excluded (Figure 2B). That this separation is mainly due to divergent sequence types rather than a distinct haplogroup composition is demonstrated by the fact that they do not stand out in the CA analysis (Figure S2 in File S1). The Tswana and Kgalagadi speak closely related languages belonging to the homogenous and close-knit Sotho-Tswana group, which is clearly distinct from surrounding language groups [56,57]. Speakers of these languages immigrated from further southeast into what is now Botswana only 500–800 years BP [58]; they would thus have been relatively isolated from the other Bantu-speaking populations included in this study. The admixture of the Kgalagadi and Tswana with autochthonous populations is likely to have taken place to a large extent before their immigration into their current area of settlement while they were still settled further to the southeast. This is evidenced by their complete lack of L0k (which is found in high frequency in Khoisan populations of western Botswana [33]) and by the distinctiveness of most of their L0d lineages, with only one Kgalagadi and two Tswana L0d sequences shared with Khoisan populations from Namibia and Botswana (Figure 3). The Northeast Zambia population shows some affinities with populations further to the northeast. For instance, it is the only population included here to carry haplogroups L0f and L4; for both of these haplogroups an eastern African origin has been suggested [19,59,60]. The presence of these haplogroups highlights the role played by admixture in the diversification of Bantu-speaking populations [60,61].

### Admixture with Autochthonous Populations

The degree of admixture between the immigrating Bantu-speaking agriculturalists and autochthonous populations is highly variable. On the one hand, some Zambian populations, such as the Nkoya, the Eastern Tonga, or the Totela, carry no autochthonous lineages at all, while on the other hand the Kuvale, Fwe, Tswana, Wider\_Shona, and Kgalagadi have 21–53% of

**Table 3.** Results of resampling tests.

| Initial Percentage        | 0.09        | 0.13        | 0.17        | 0.21        | 0.25        | 0.29        | 0.33        | 0.37        | 0.41        | 0.45        | 0.49        | 0.53        | 0.57       |
|---------------------------|-------------|-------------|-------------|-------------|-------------|-------------|-------------|-------------|-------------|-------------|-------------|-------------|------------|
| 500 ya <sup>a</sup>       | 0.02        | 0.11        | 0.32        | 0.47        | 0.62        | 0.65        | 0.51        | 0.47        | 0.22        | 0.11        | 0.08        | 0.01        | 0.00       |
| 1000 ya <sup>a</sup>      | 0.04        | 0.11        | 0.26        | 0.40        | 0.55        | 0.58        | 0.52        | 0.39        | 0.18        | 0.11        | 0.09        | 0.03        | 0.01       |
| 2000 ya <sup>a</sup>      | 0.03        | 0.12        | 0.24        | 0.31        | 0.41        | 0.42        | 0.36        | 0.30        | 0.22        | 0.20        | 0.10        | 0.05        | 0.02       |
| <b>Initial Percentage</b> | <b>0.01</b> | <b>0.05</b> | <b>0.09</b> | <b>0.13</b> | <b>0.17</b> | <b>0.21</b> | <b>0.25</b> | <b>0.29</b> | <b>0.32</b> | <b>0.34</b> | <b>0.36</b> | <b>0.38</b> | <b>0.4</b> |
| 500 ya <sup>b</sup>       | 0.00        | 0.00        | 0.04        | 0.06        | 0.08        | 0.05        | 0.01        | 0.01        | 0.00        | 0.00        | 0.00        | 0.00        | 0.00       |
| 1000 ya <sup>b</sup>      | 0.00        | 0.01        | 0.05        | 0.11        | 0.09        | 0.09        | 0.04        | 0.02        | 0.01        | 0.01        | 0.01        | 0.00        | 0.00       |
| 2000 ya <sup>b</sup>      | 0.01        | 0.03        | 0.09        | 0.10        | 0.10        | 0.08        | 0.07        | 0.03        | 0.02        | 0.02        | 0.01        | 0.01        | 0.01       |
| 500 ya <sup>c</sup>       | 0.00        | 0.02        | 0.04        | 0.20        | 0.17        | 0.13        | 0.15        | 0.10        | 0.05        | 0.05        | 0.03        | 0.01        | 0.01       |
| 1000 ya <sup>c</sup>      | 0.00        | 0.02        | 0.07        | 0.14        | 0.27        | 0.25        | 0.11        | 0.07        | 0.08        | 0.03        | 0.02        | 0.01        | 0.01       |
| 2000 ya <sup>c</sup>      | 0.00        | 0.03        | 0.08        | 0.13        | 0.16        | 0.17        | 0.18        | 0.10        | 0.10        | 0.07        | 0.05        | 0.04        | 0.04       |
| 500 ya <sup>d</sup>       | 0.00        | 0.00        | 0.00        | 0.02        | 0.03        | 0.01        | 0.01        | 0.00        | 0.00        | 0.00        | 0.00        | 0.00        | 0.00       |
| 1000 ya <sup>d</sup>      | 0.00        | 0.00        | 0.01        | 0.01        | 0.02        | 0.01        | 0.01        | 0.01        | 0.00        | 0.00        | 0.00        | 0.00        | 0.00       |
| 2000 ya <sup>d</sup>      | 0.00        | 0.01        | 0.02        | 0.03        | 0.03        | 0.02        | 0.02        | 0.01        | 0.01        | 0.01        | 0.01        | 0.00        | 0.00       |

<sup>a</sup>Probability of retaining the shared L3d haplotype in Himba/Herero and Damara for different time splits (Years Ago).

<sup>b</sup>Probability of retaining L3f in Himba and Herero and losing it in Damara for different time splits (Years Ago).

<sup>c</sup>Probability of retaining L3f in Himba and Herero and having it at low percentage in Kuvale for different time splits (Years Ago).

<sup>d</sup>Probability of retaining L3d in Himba and Herero and losing it in Kuvale for different time splits (Years Ago).

doi:10.1371/journal.pone.0099117.t003

haplogroups L0d and/or L0k. There is a noticeable geographical cline in the presence of these two different autochthonous haplogroups (cf. [33]), with L0d being present at high frequency in Bantu-speaking populations from the southern range of our dataset (Botswana, Namibia, and southern Angola), while L0k is practically absent from these populations (Figure S3A in File S1). While the frequency distribution of L0d in our Bantu-speaking populations matches that of extant Khoisan populations (where the highest frequencies of L0d are found in populations of South Africa, Botswana, and Namibia), the highest frequencies of L0k in extant Khoisan populations are found in western Botswana and northeastern Namibia [33]. Together with the fact that practically all of the L0k lineages found in Bantu-speaking populations are highly divergent, this distribution of L0k provides good evidence that the Bantu-speaking immigrants into Zambia intermarried with genetically distinct autochthonous populations who are nowadays extinct [20,33].

L0d, too, provides evidence that the gene flow between indigenous populations and immigrating Bantu speech communities involved genetically distinct autochthonous populations. For instance, there are two divergent branches belonging to sub-haplogroup L0d1b1 that are practically restricted to Bantu-speaking populations, being found in the Kuvale and Nyaneka of southwestern Angola and in some populations of western Zambia as well as one Damara (see arrows 2 and 3 in Figure 3). In addition, only the Herero, Tswana, and Kgalagadi share L0d haplotypes directly with neighboring Khoisan populations, and this to differing degrees. The admixture between Herero and Khoisan populations is likely to have taken place quite recently, as they share four out of their five L0d sequences (Table S4). In contrast, the Tswana share only two of their five L0d sequences with different Khoisan populations, while two sequences are at least four to five mutational steps distant from any Khoisan haplotypes. Rather surprisingly, the Kgalagadi, who are the Bantu-speaking population with the highest level of autochthonous haplogroups, share only one out of their ten L0d sequences directly with the neighboring Khoe-speaking G|ui; the other haplotypes are between one and at least eight mutational steps distant from the closest Khoisan sequence type (Table S4). These data indicate that the gene flow from autochthonous populations into most of the Bantu-speaking populations included in the dataset took place a long time ago and/or involved Khoisan populations who did not survive into the present. It is furthermore notable that the Mbukushu, who are reported to have been closely associated with Khwe populations, sharing villages and intermarrying with them [62], do not share any sequences with Khwe.

### Relationships of Kuvale, Himba, Herero, and Damara

The most striking results of this study concern the genetic differences between the culturally and linguistically closely related Himba, Herero, and Kuvale on the one hand and the genetic similarity of the Herero and Himba to the culturally and linguistically distinct Damara, on the other. The Himba, Herero, and Damara differ in their maternal lineages from all other populations included here, as shown by the AMOVA results (Table 2) and the MDS and CA analyses (Figure 2 and Figure S2 in File S1). This is in good accordance with analyses of genomewide SNP data in which the Himba and Damara also stand out as being distinct from other populations speaking Niger-Congo languages [17]. However, the Damara differ from the Himba and the Herero in their complete lack of haplogroup L3f, suggesting that they have had a different demographic history from the Himba and Herero – a hypothesis that is further supported by the Bayesian Skyline Plots for these populations

(Figure S5 in File S1): these show a strong signal of recent expansion for the Herero and Himba but not the Damara (although such results should be taken with caution given the limits of this method to reconstruct very recent demographic events, especially in cases of reduced diversity). The high frequencies of shared sequences belonging to haplogroup L3d and the complete absence of haplogroup L3f in the Damara could reflect either of two scenarios: 1) The Himba, Herero, and Damara share a common ancestor who carried both L3d and L3f, but the Damara lost the latter haplogroup by drift; or 2) The ancestor of the Himba and Herero carried haplogroup L3f, but not L3d, and only incorporated L3d sequences through admixture with Damara in the maternal line. As demonstrated by the results of the resampling test (Table 3), the genetic data do not exclude a shared ancestry of the three populations, in good accordance with the fact that in previous literature both the Damara and the Herero were referred to as Damara, with the specification “Berg Damara” for the former and “Cattle Damara” for the latter [29].

However, the Kuvale, who are culturally and linguistically closely related to the Herero and Himba, lack haplogroup L3d entirely, but share L3f sequences with the Himba and Herero. As indicated by the results of the resampling test (Table 3), the Himba, Herero, and Kuvale could stem from a common maternal ancestral population, but only if it carried haplogroup L3f and not L3d. Thus, a shared ancestor of Himba, Herero, and Damara would have had to carry both L3d and L3f, whereas a shared ancestor of the Himba, Herero, and Kuvale would have had to carry only L3f and no L3d – clearly conflicting scenarios. It is thus plausible that the Himba, Herero, and Kuvale share a common ancestor and a common source of L3f lineages, and that the ancestor of the Himba and Herero picked up haplogroup L3d at a later stage through intermarriage with the Damara. This hypothesis coincides with the later stages of a detailed proposal for the history of the Herero-speaking peoples (i.e. the ancestors of the Kuvale, Himba, and Herero) based entirely on linguistic data [51]. This suggests a fairly recent immigration into southwestern Africa followed by different periods of intermarriage with indigenous peoples – both Bantu-speaking populations in northeastern Angola and Khoisan populations further south. This scenario of migration and differential intermarriage is potentially reflected in the signal of a founder event and expansion detectable in the Himba and Herero (Table 1, Figure 3, Figure S4 in File S1; cf. [63]) as well as in the close affinities of the Kuvale with neighboring populations of Angola and the proximity of the Herero and Himba to the Damara.

The L0d lineages in the Kuvale were previously suggested to possibly stem from admixture with the now extinct Angolan Kwadi [21]. These were a pastoralist population who lived within the Kuvale territory and spoke a language related to the Khoe languages, a family that has been suggested to have been brought to southern Africa by a pre-Bantu migration of pastoralists [64]. Since haplogroup L0d is widespread across Khoisan foragers and pastoralists [18], it is difficult to unambiguously assign the Kuvale L0d lineages to a relatively recent pastoralist migration. However, a branch of haplogroup L0d that is restricted to the Kuvale, Himba, and Nyaneka (indicated by arrow 1 in Figure 3) derives from a sequence type found in seven Shua. These are a Khoe-speaking population of northeastern Botswana who are considered possible descendants of the Khoe-Kwadi-speaking pastoralists who would also have been the ancestors of the Kwadi [64]. Since the Shua are settled so far to the east of the Kuvale, direct admixture seems implausible, raising the possibility that these lineages derive from admixture with Kwadi.

In contrast, subhaplogroup L3d3a has a much more confined distribution and is more likely to have been brought to the area by Khoe-speaking pastoralists as previously suggested [18]. This suggestion is in good accordance with the signal of expansion detectable in these lineages ~2,500–3000 years BP (Figure S4 in File S1), since archaeological evidence of pastoralism is detectable from ~2,200 years in the region [16]. Surprisingly, while roughly 50% of the maternal genepool of the Himba, Herero and Damara appear to stem from this putative Khoe admixture, in analyses of genomewide SNP data the Himba and Damara show no affinities with Khoe-speaking populations [17]. However, since the putative incorporation of Khoe maternal lineages might have involved only a few women related in the maternal line, followed by an expansion of this lineage after the incorporation of Damara women by the Himba and Herero ancestor, this lineage would have been retained unchanged due to the specific characteristics of mtDNA. In contrast, the signal of relationship with Khoe-speaking populations may have been lost from the autosomal DNA if this single admixture event was followed by several generations of intermarriage with non-Khoe populations.

It thus appears likely that the maternal ancestors of the Kuvale, Herero, and Himba had a haplogroup composition similar to that found in the Kuvale today, albeit with somewhat higher frequencies of L3f, which would have partly resulted from intermarriage with neighboring populations in what is now Angola. The shared ancestor of the modern-day Herero and Himba would later have incorporated Damara women carrying haplogroup L3d, themselves possibly the descendants of Khoe-speaking peoples, while the ancestor of the modern-day Kuvale would have intermarried with Kwadi pastoralists. Detailed Y-chromosomal as well as additional genome-wide analyses of the Damara, Himba, Herero, Kuvale, and other Bantu-speaking populations of southern Africa are needed to further investigate the prehistory of these groups.

## Conclusions

In summary, we have been able to show that the maternal genepool of the Bantu-speaking populations of southern Africa is very homogenous. While the linguistic division into Western and Eastern Bantu does not correlate with genetic divergence, the results of the AMOVA and Mantel analyses demonstrate the impact of geography in structuring the genetic variation. Furthermore, there are big differences in the extent of intermarriage between Bantu-speaking agriculturalists and autochthonous peoples, with some populations showing no evidence of gene flow, while others, like the populations of Botswana, carry substantial proportions of autochthonous lineages. The lack of L0d/L0k sequences shared between Bantu and Khoisan populations suggests that the admixture undergone by most of the Bantu-speaking immigrants into southern Africa took place soon after their entering the region and partly involved now-extinct autochthonous populations. Lastly, the genetic data are in good accordance with a linguistic hypothesis concerning the final stages of the settlement of Herero-speaking peoples in which both language and culture contact as well as genetic admixture play important roles. Analyses of the Y-chromosomal diversity will shed further light on these processes.

## Supporting Information

**File S1 Contains the files: Figure S1:** Schematic phylogeny of the African haplogroups found in the 982 individuals of our

dataset. The reference sequences RSRS (Behar et al. 2012) and rCRS (corresponding to European haplogroup H, Andrews et al. 1999) are indicated with a black line. Dashed lines indicate nodes with low posterior probability for which the topology could not be resolved. The width of the triangles is proportional to the frequency of a given haplogroup in the dataset. Haplogroups L3d and L3f, in yellow, are described in more detail in Figure S4A and S4B. **Figure S2:** CA plots based on basic haplogroup frequencies. Color coding by linguistic affiliation as specified in Table 1. A: Including all haplogroups and all populations. B: Including all haplogroups but excluding outlier populations. C: Excluding haplogroups L0d and L0k and excluding outliers. **Figure S3:** Haplogroup frequencies of important haplogroups in the populations studied here. A: Haplogroups L0d and L0k. B: Subhaplogroups L3d3a1 and L3f1b4a. The size of the circles is proportional to the sample size. **Figure S4A:** Bayesian tree of all African complete mtDNA sequences belonging to haplogroup L3d, and S4B: belonging to haplogroup L3f. The sequences included in these trees are the same as those included in the networks in Figure 4B and D. Branches discussed in the main text are highlighted. The posterior probability associated with major nodes is indicated in red font. Note the different time scale between the two trees. **Figure S5:** Bayesian Skyline Plots for the Himba, Herero, Kuvale and Damara. X axis: time in years ago. Y axis: effective population size per generation time.

(PDF)

**Table S1** Information on country of sampling, language and population affiliation with assigned population as well as GenBank accession numbers for individual samples included in the study.

(XLSX)

**Table S2** Frequency of L3d and L3f in the African populations included in the Surfer maps and their geographical coordinates.

(XLSX)

**Table S3** Basic haplogroup frequencies in the populations studied here.

(XLSX)

**Table S4** L0d haplotypes shared between Bantu speakers and Khoisan.

(XLSX)

## Acknowledgments

This study focuses on the prehistory of populations as reflected in their genetic variation. It does not intend to evaluate the self-identification or cultural identity of any group, which consist of much more than just genetic ancestry. We sincerely thank: all the sample donors for their participation in this study and the governments of Botswana, Angola, Namibia, and Zambia for supporting our research; Roland Schröder and Madhusudan Reddy Nandineni for assistance with library preparation; Hongyang Xu for help with the imputation process; Ana Duggan for assistance with the tree analysis; and Mingkun Li for assistance with the bioinformatics analysis.

## Author Contributions

Conceived and designed the experiments: CB JR MS BP. Performed the experiments: MV. Analyzed the data: CB MV SO. Contributed reagents/materials/analysis tools: JR MS BP. Wrote the paper: CB KB JR MS BP. Provided input on writing the manuscript: MV SO.

## References

- Phillipson DW (2005) African archaeology. Cambridge: Cambridge University Press.
- Bostoen K (2007) Pots, words and the Bantu problem: On lexical reconstruction and early African history. *J Afr Hist* 48.
- Blench R (2006) Archaeology, Language, and the African Past. Rowman Altamira.
- Nurse D, Philippson G (2003) Towards a historical classification of the Bantu languages. In: Nurse D, Philippson G, editors. *The Bantu Languages*. London/New York, Routledge. pp. 164–181.
- Vansina J (1995) New Linguistic Evidence and “The Bantu Expansion.” *J Afr Hist* 36: 173–195. doi:10.1017/S0021853700034101.
- Pakendorf B, Bostoen K, de Filippo C (2011) Molecular perspectives on the Bantu expansion: a synthesis. *Lang Dyn Chang* 1: 50–88.
- Diamond J, Bellwood P (2003) Farmers and Their Languages: The First Expansions. *Science* (80- ) 300: 597–603.
- Schadeberg TC (2003) Historical linguistics. In: Nurse D, Philippson G, editors. *The Bantu Languages*. London: Routledge. pp. 143–163.
- Bostoen K, Grollemund R, Koni Muluwa J (2013) Climate-induced vegetation dynamics and the Bantu Expansion: Evidence from Bantu names for pioneer trees (*Elaeis guineensis*, *Canarium schweinfurthii*, and *Musanga cecropioides*). *Comptes Rendus Geosci* 345: 336–349.
- Pour NA, Plaster CA, Bradman N (2012) Evidence from Y-chromosome analysis for a late exclusively eastern expansion of the Bantu-speaking people. *Eur J Hum Genet* 21: 423–429.
- Alves I, Coelho M, Gignoux C, Damasceno A, Prista A, et al. (2011) Genetic homogeneity across Bantu-speaking groups from Mozambique and Angola challenges early split scenarios between East and West Bantu populations. *Hum Biol* 83: 13–38.
- De Filippo C, Barbieri C, Whitten M, Mpoloka SW, Gunnarsdóttir ED, et al. (2011) Y-chromosomal variation in sub-Saharan Africa: insights into the history of Niger-Congo groups. *Mol Biol Evol* 28: 1255–1269. doi:10.1093/molbev/msq312.
- Reid A, Sadr K, Hanson-James N (1998) Herding traditions. In: Lane P, Reid A, Segobye A, editors. *Ditswa MMung: The Archaeology of Botswana*. Gaborone: Pula Press and The Botswana Society. pp. 81–100.
- Kinahan J (2011) From the beginning: the archaeological evidence. *A History of Namibia: From the Beginning to 1990*. London: Hurst and Company. pp. 15–43.
- Mitchell P (2002) *The Archaeology of Southern Africa*. Cambridge: Cambridge University Press.
- Pleurdeau D, Imalwa E, Detroit F, Lesur J, Veldman A, et al. (2012) “Of sheep and men”: earliest direct evidence of caprine domestication in southern Africa at leopard cave (Erongo, Namibia). *PLoS One* 7: e40340.
- Pickrell JK, Patterson N, Barbieri C, Berthold F, Gerlach L, et al. (2012) The genetic prehistory of southern Africa. *Nat Commun* 3: 1143. doi:10.1038/ncomms2140.
- Barbieri C, Güldemann T, Naumann C, Gerlach L, Berthold F, et al. (2014) Unraveling the complex maternal history of Southern African Khoisan populations. *Am J Phys Anthropol* 153: 435–448.
- Salas A, Richards M, De la Fe T, Lareu M V, Sobrino B, et al. (2002) The making of the African mtDNA landscape. *Am J Hum Genet* 71: 1082–1111.
- Barbieri C, Butthof A, Bostoen K, Pakendorf B (2013) Genetic perspectives on the origin of clicks in Bantu languages from southwestern Zambia. *Eur J Hum Genet* 21: 430–436.
- Coelho M, Sequeira F, Luiselli D, Belez S, Rocha J (2009) On the edge of Bantu expansions: mtDNA, Y chromosome and lactase persistence genetic variation in southwestern Angola. *BMC Evol Biol* 9: 80.
- Wood ET, Stover DA, Ehret C, Destro-Bisol G, Spedini G, et al. (2005) Contrasting patterns of Y chromosome and mtDNA variation in Africa: evidence for sex-biased demographic processes. *Eur J Hum Genet* 13: 867–876.
- Quintana-Murci L, Harmant C, Quach H, Balanovsky O, Zaporozhchenko V, et al. (2010) Strong Maternal Khoisan Contribution to the South African Coloured Population: A Case of Gender-Biased Admixture. *Am J Hum Genet* 86: 611–620.
- Schlebusch CM, Lombard M, Soodyall H (2013) MtDNA control region variation affirms diversity and deep sub-structure in populations from southern Africa. *BMC Evol Biol* 13: 1–21.
- De Filippo C, Heyn P, Barham L, Stoneking M, Pakendorf B (2010) Genetic perspectives on forager-farmer interaction in the Luangwa valley of Zambia. *Am J Phys Anthr* 141: 382–394.
- Castri L, Tofanelli S, Garagnani P, Bini C, Fosella X, et al. (2009) mtDNA variability in two Bantu-speaking populations (Shona and Hutu) from Eastern Africa: Implications for peopling and migration patterns in sub-Saharan Africa. *Am J Phys Anthropol* 140: 302–311.
- Güldemann T, Stoneking M (2008) A Historical Appraisal of Clicks: A Linguistic and Genetic Population Perspective. *Annual Review of Anthropology*. Annual Reviews, Vol. 37. 93–109.
- Soodyall H, Jenkins T (1992) Mitochondrial DNA polymorphisms in Khoisan populations from southern Africa. *Ann Hum Genet* 56: 315–324.
- Barnard ACN (1992) Hunters and herders of southern Africa: a comparative ethnography of the Khoisan peoples. Cambridge; New York: Cambridge University Press.
- Maricic T, Whitten M, Pääbo S (2010) Multiplexed DNA Sequence Capture of Mitochondrial Genomes Using PCR Products. *PLoS One* 5: e14004–e14004.
- Meyer M, Kircher M (2010) Illumina sequencing library preparation for highly multiplexed target capture and sequencing. *Cold Spring Harb Protoc* 2010: pdb-prot5448.
- Briggs AW, Good JM, Green RE, Krause J, Maricic T, et al. (2009) Targeted retrieval and analysis of five Neandertal mtDNA genomes. *Science* (80- ) 325: 318.
- Barbieri C, Vicente M, Rocha J, Mpoloka SW, Stoneking M, et al. (2013) Ancient substructure in early mtDNA lineages of southern Africa. *Am J Hum Genet* 92: 285–292. doi:10.1016/j.ajhg.2012.12.010.
- Gonder MK, Mortensen HM, Reed FA, de Sousa A, Tishkoff SA (2007) Whole-mtDNA genome sequence analysis of ancient African lineages. *Mol Biol Evol* 24: 757–768.
- Behar DM, Villemers R, Soodyall H, Blue-Smith J, Pereira L, et al. (2008) The Dawn of Human Matrilineal Diversity. *Am J Hum Genet* 82: 1130–1140.
- Batini C, Lopes J, Behar DM, Calafell F, Jorde LB, et al. (2011) Insights into the Demographic History of African Pygmies from Complete Mitochondrial Genomes. *Mol Biol Evol* 28: 1099–1110.
- Hartmann A, Thieme M, Nanduri LK, Stempf T, Moehle C, et al. (2009) Validation of Microarray-Based Resequencing of 93 Worldwide Mitochondrial Genomes. *Hum Mutat* 30: 115–122.
- Torroni A, Achilli A, Macaulay V, Richards M, Bandelt H-J (2006) Harvesting the fruit of the human mtDNA tree. *TRENDS Genet* 22: 339–345.
- Kloss-Brandstätter A, Pacher D, Schönherr S, Weissensteiner H, Binna R, et al. (2011) HaploGrep: a fast and reliable algorithm for automatic classification of mitochondrial DNA haplogroups. *Hum Mutat* 32: 25–32.
- Paradis E (2010) pegas: an R package for population genetics with an integrated-modular approach. *Bioinformatics* 26: 419.
- Nenadic O, Greenacre M (2007) Correspondence analysis in R, with two-and three-dimensional graphics: the ca package. *J Stat Softw* 20: 1–13.
- Venables WN, Ripley BD (2002) MASS: modern applied statistics with S. New York: Springer.
- Bandelt HJ, Forster P, Rohl A (1999) Median-joining networks for inferring intraspecific phylogenies. *Mol Biol Evol* 16: 37–48.
- Oksanen J, Blanchet FG, Kindt R, Legendre P, Minchin PR, et al. (2012) vegan: Community Ecology Package. R package version 2.0–5. <http://cran.r-project.org/web/packages/vegan/index.html>.
- Furrer R, Nychka D, Sain S (2012) fields: Tools for spatial data. R Package version 6: <http://CRAN.R-project.org/package=fields>.
- Drummond AJ, Suchard MA, Xie D, Rambaut A (2012) Bayesian Phylogenetics with BEAUti and the BEAST 1.7. *Mol Biol Evol* 29: 1969–1973.
- Soares P, Ermini L, Thomson N, Mormina M, Rito T, et al. (2009) Correcting for purifying selection: an improved human mitochondrial molecular clock. *Am J Hum Genet* 84: 740–759.
- Forster P, Harding R, Torroni A, Bandelt HJ (1996) Origin and evolution of Native American mtDNA variation: a reappraisal. *Am J Hum Genet* 59: 935–945.
- Černý V, Salas A, Hajek M, Žaloudková M, Brdička R (2007) A Bidirectional Corridor in the Sahel-Sudan Belt and the Distinctive Features of the Chad Basin Populations: A History Revealed by the Mitochondrial DNA Genome. *Ann Hum Genet* 71: 433–452.
- Cerezo M, Černý V, Carracedo A, Salas A (2011) New insights into the Lake Chad Basin population structure revealed by high-throughput genotyping of mitochondrial DNA coding SNPs. *PLoS One* 6.
- Möhlig WJG (2009) The Language History of Herero as a Source of Ethnohistorical Interpretations. In: Michael B, Gewald J-B, editors. *People, Cattle and Land - Transformations of a Pastoral Society in Southwestern Africa*. Köln: Rüdiger Köppe Verlag. pp. 119–138.
- De Filippo C, Bostoen K, Stoneking M, Pakendorf B (2012) Bringing together linguistic and genetic evidence to test the Bantu expansion. *Proc R Soc B-Biological Sci* 279: 3256–3263.
- Clist B (1987) A critical reappraisal of the chronological framework of the early Urewe Iron Age industry. *Muntu* 6: 35–62.
- Ashley CZ (2010) Towards a socialised archaeology of ceramics in Great Lakes Africa. *African Archaeol Rev* 27: 135–163.
- Neumann K, Bostoen K, Höhn A, Kahlheber S, Ngomanda A, et al. (2012) First farmers in the Central African rainforest: A view from southern Cameroon. *Quat Int* 249: 53–62. doi:10.1016/j.quaint.2011.03.024.
- Gowlett DF (2003) The Bantu Languages. In: Nurse D, Philippson G, editors. *Routledge*. pp. 609–638.
- Creissels D (1999) Remarks on the Sound Correspondences between Proto-Bantu and Tswana (S. 31), with Particular Attention to Problems Involving\* j (or\* y),\* i and sequences\* NC. In: Hombert J-M, Hyman LM, editors. *Bantu Historical Linguistics. Theoretical and Empirical Perspectives*. Stanford: CSLI (Center for the Study of Language and Information) Publications. pp. 297–334.

58. Solway JS (1991) Tswana. In: Middleton J, Rassam A, editors. *Encyclopedia of World Cultures, Volume IX - Africa and the Middle East*. Boston, G.K. Hall & Company. pp. 360–365.
59. Kivisild T, Reidla M, Metspalu E, Rosa A, Brehm A, et al. (2004) Ethiopian mitochondrial DNA heritage: tracking gene flow across and around the gate of tears. *Am J Hum Genet* 75: 752–770.
60. Batai K, Babrowski KB, Arroyo JP, Kusimba CM, Williams SR (2013) Mitochondrial DNA Diversity in Two Ethnic Groups in Southeastern Kenya: Perspectives from the Northeastern Periphery of the Bantu Expansion. *Am J Phys Anthropol* 150: 482–491.
61. Sikora M, Laayouni H, Calafell F, Comas D, Bertranpetit J (2010) A genomic analysis identifies a novel component in the genetic structure of sub-Saharan African populations. *Eur J Hum Genet* 19: 84–88.
62. Fisch M (2005) *The Mbukushu in Angola (1730–2002): A History of Migration, Flight and Royal Rainmaking*. Köln: Rüdiger Köppe.
63. Spurdle AB, Hammer MF, Jenkins T (1994) The Y Alu polymorphism in southern African populations and its relationship to other Y-specific polymorphisms. *Am J Hum Genet* 54: 319–330.
64. Güldemann T (2008) A linguist's view: Khoe-Kwadi speakers as the earliest food-producers of southern Africa. *South African Humanit* 20: 93–132.