



**HAL**  
open science

## Conceptualization in process: Motion event processing in English and French

Helen Engemann, Coralie Vincent, Efstathia Soroli, Maya Hickmann

► **To cite this version:**

Helen Engemann, Coralie Vincent, Efstathia Soroli, Maya Hickmann. Conceptualization in process: Motion event processing in English and French. 3rd AttLis workshop "The Attentive Listener in the Visual World", Mar 2016, Potsdam, Germany. . halshs-01293405v2

**HAL Id: halshs-01293405**

**<https://shs.hal.science/halshs-01293405v2>**

Submitted on 8 Aug 2016

**HAL** is a multi-disciplinary open access archive for the deposit and dissemination of scientific research documents, whether they are published or not. The documents may come from teaching and research institutions in France or abroad, or from public or private research centers.

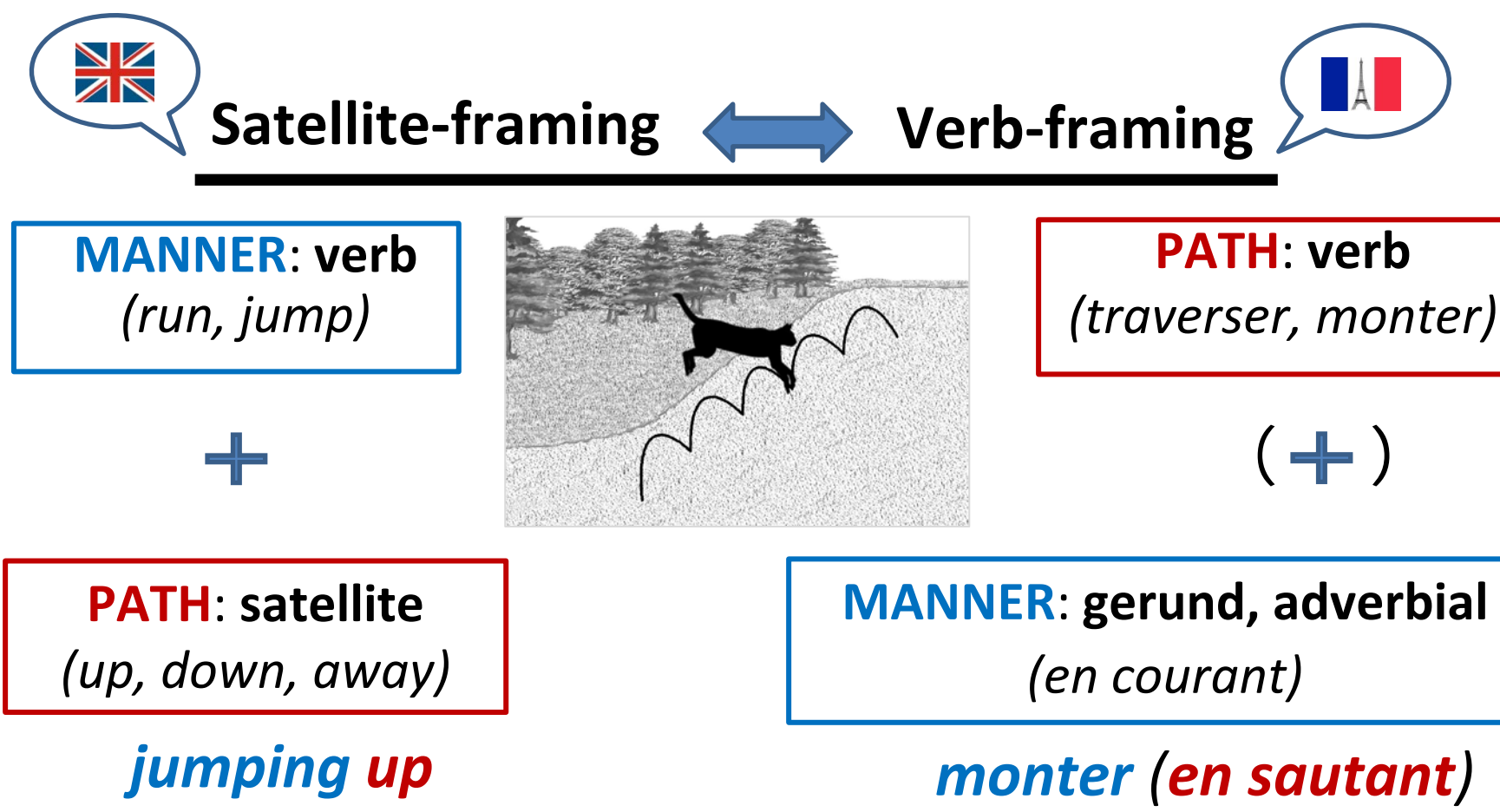
L'archive ouverte pluridisciplinaire **HAL**, est destinée au dépôt et à la diffusion de documents scientifiques de niveau recherche, publiés ou non, émanant des établissements d'enseignement et de recherche français ou étrangers, des laboratoires publics ou privés.

### Introduction

#### Thinking-for-speaking hypothesis [1,2]

- Language as filter on event construal
- Language-specific encoding patterns affect attention allocation during online speech processes
- Routinely encoded aspects of reality are more salient to speakers
- Effect on children's conceptual and linguistic development [3,4]

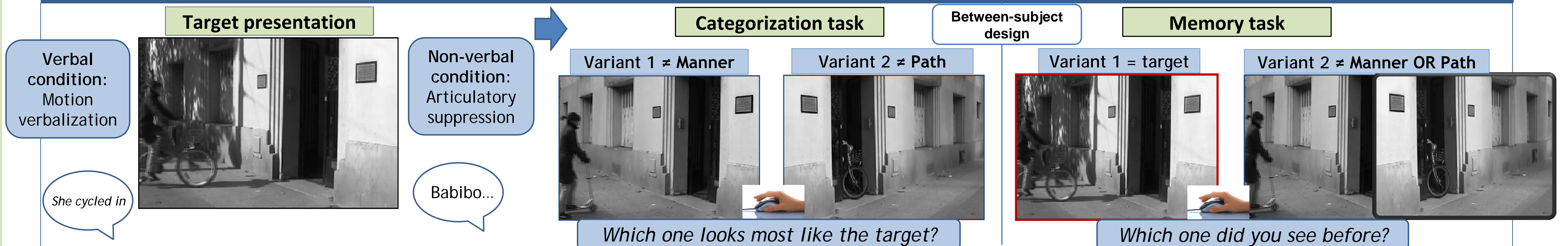
### Motion Event Typology [5]



### Research Questions

- ❖ Q1: Do cross-linguistic differences in motion expression affect motion event processing?
- ❖ Q2: Which domains of cognition are affected and in what condition (verbal and/or non-verbal)?
- ❖ Q3: Does typology impact children's linguistic and conceptual development of motion representation?

### Materials & Procedure



### Eye-tracking: Dynamic AOIs

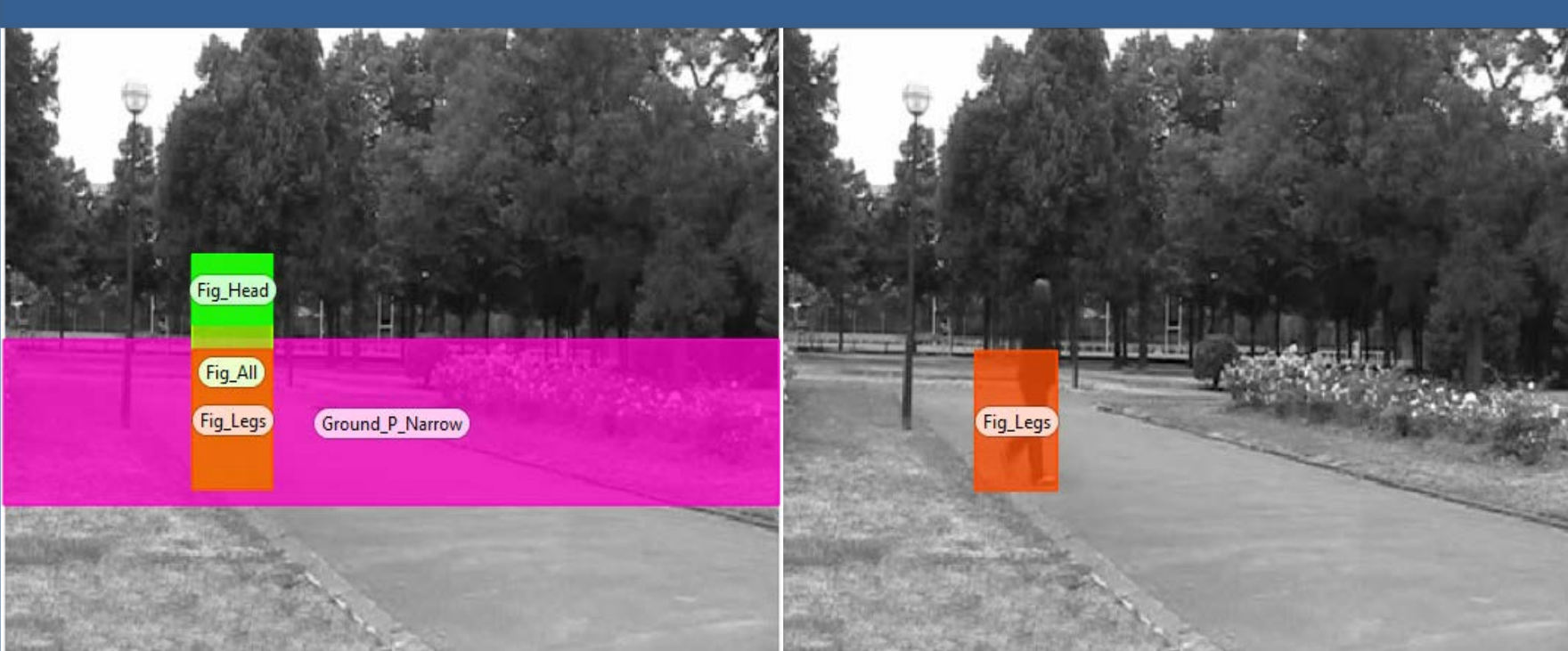


Fig 1. Definition of dynamic zones of interest

- Tobii X120 head-free binocular remote desktop eye-tracker (120 Hz)
- Dynamic AOIs hand-drawn for each stimulus, allowing precise monitoring of fixations

### Hypotheses

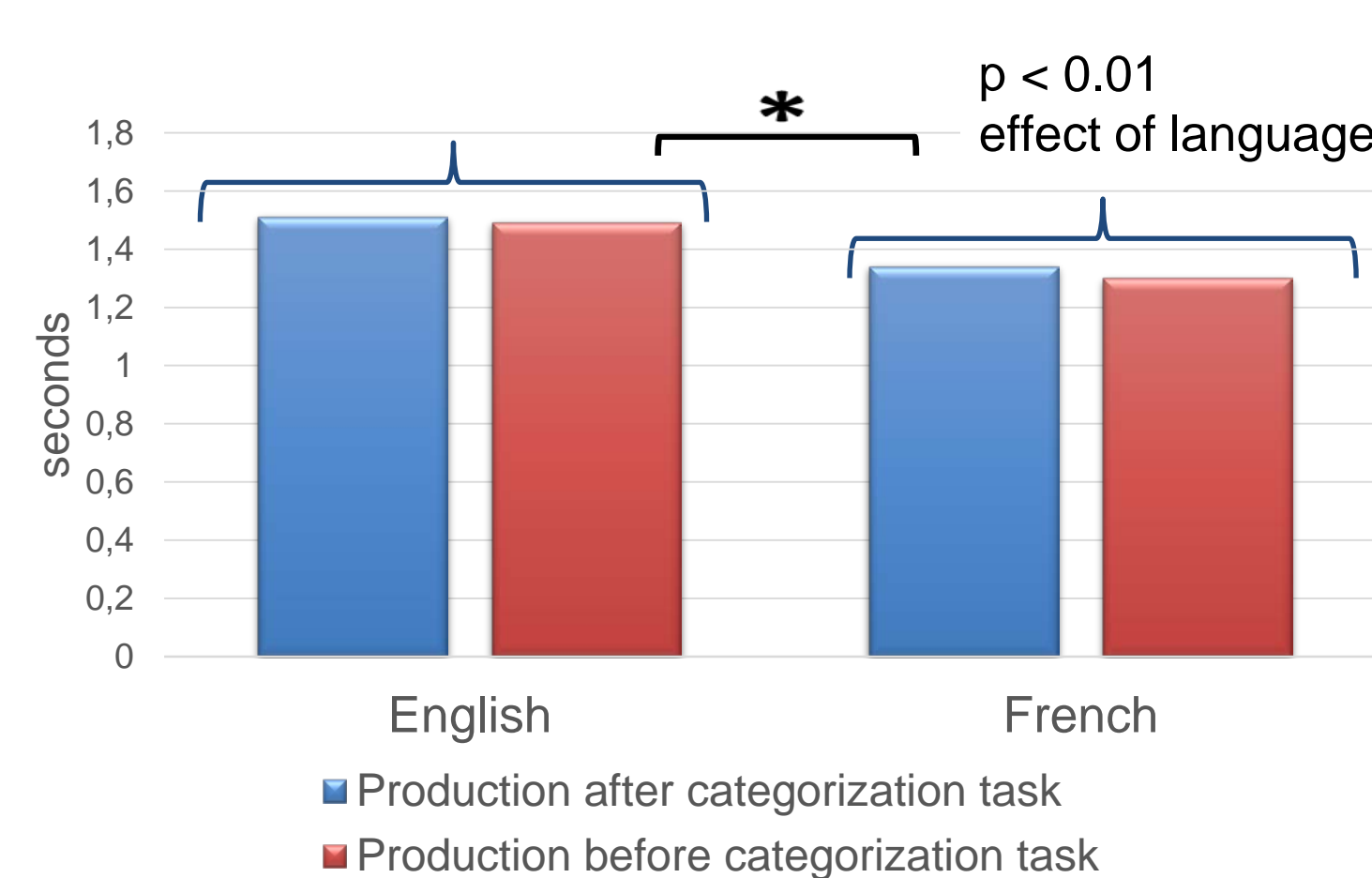
- **Categorization:** Manner criterion EN > FR
- **Memory:** Manner recognition errors FR > EN
- **Gaze pattern:** Total fixation duration on Manner-relevant AOI EN > FR

### Participants

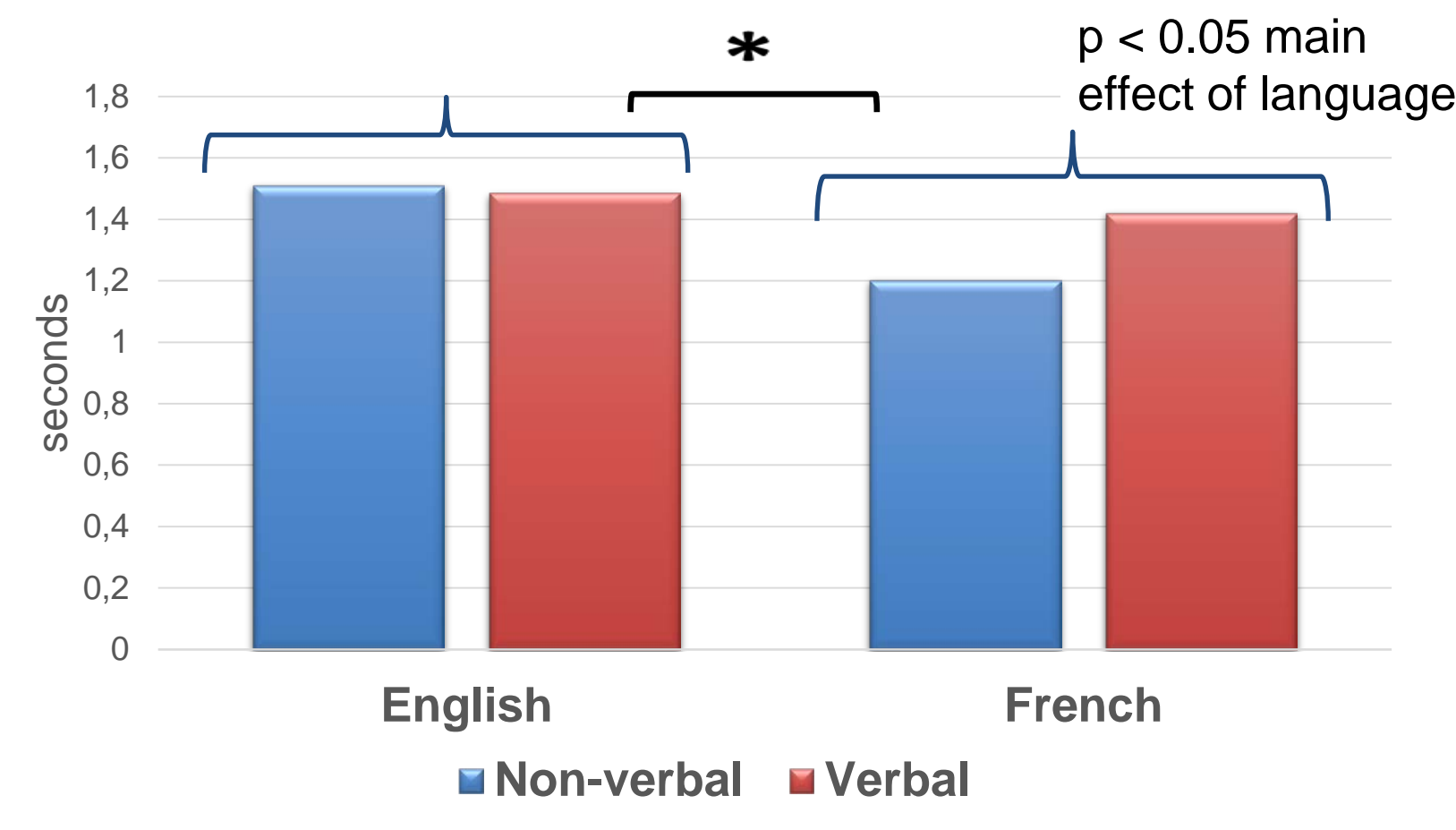
Adults	NV English	VE English	NV French	VE French
Categorization	22	19	18	19
Memorization	19	20	19	18

### Results eye movements [6,7]

#### Fixation duration during viewing for production



#### Fixation duration during categorization

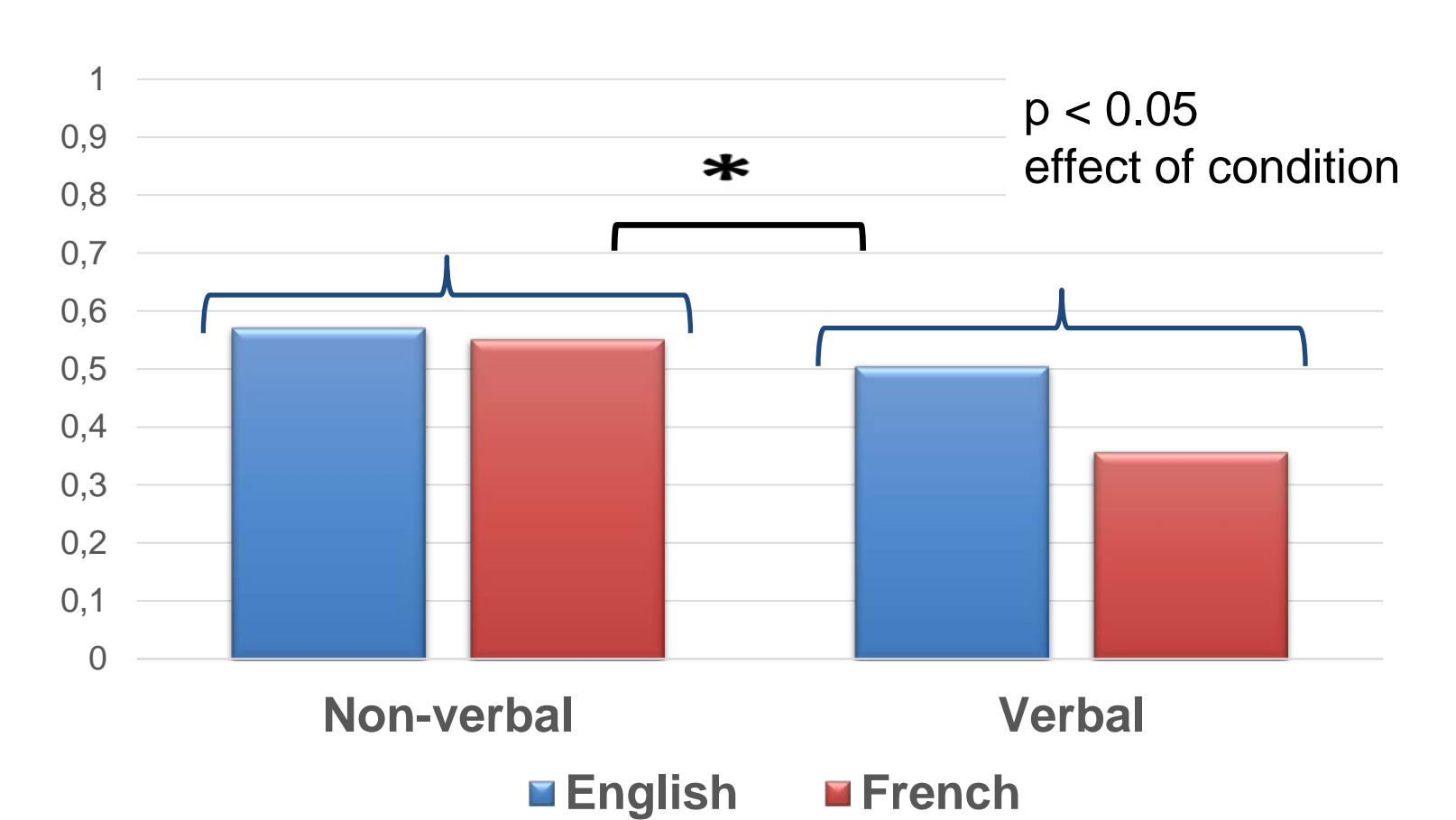


#### Fixation duration memorization: No sig. differences

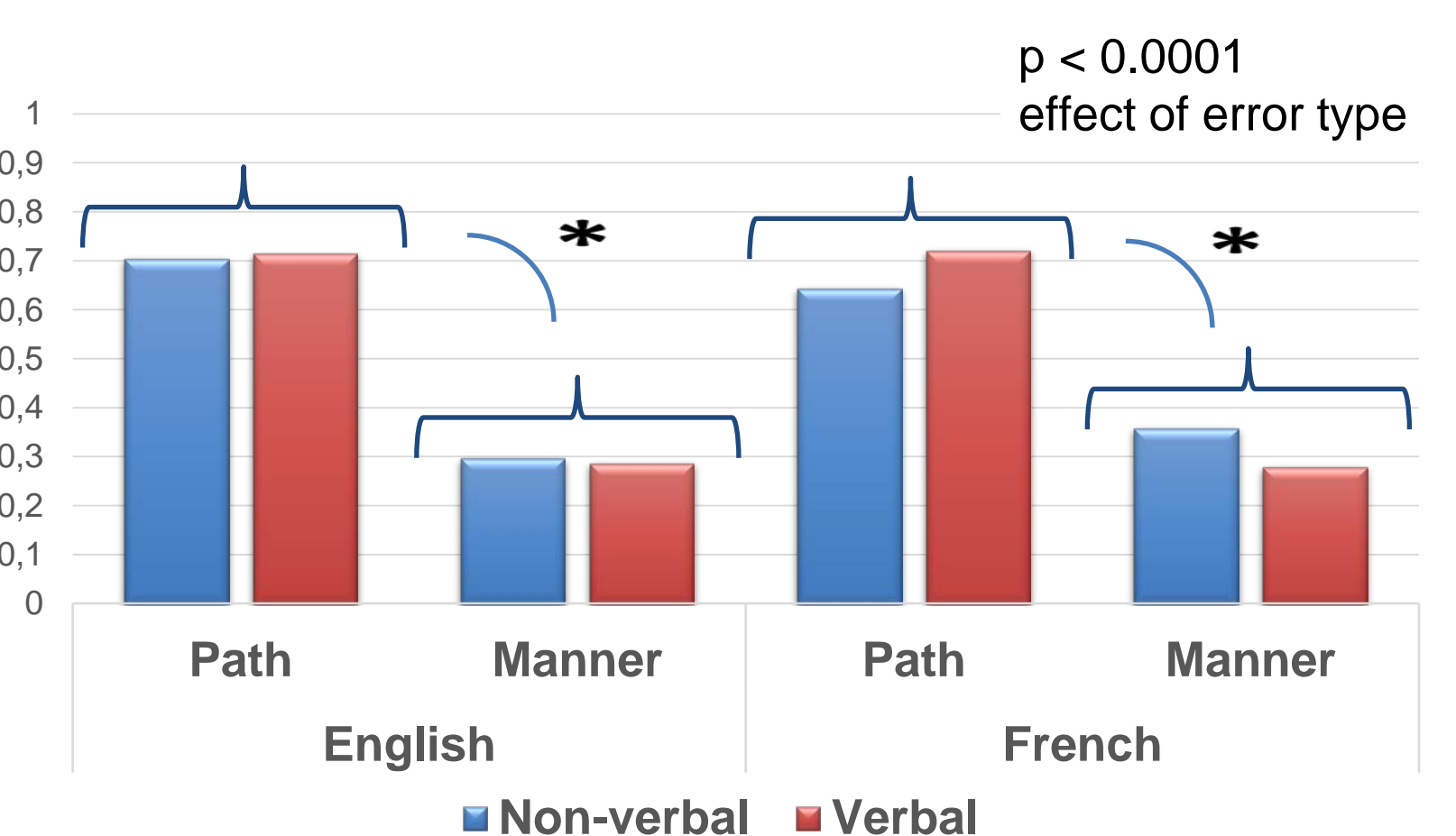
- Offline measures show effects of condition (NV vs. VE)
- Eye movements reveal significant language-specific processing differences, also in non-verbal conditions
- Not all cognitive processes affected alike: impact on fixations during categorization, but not memorization
- No meaningful results with classification analysis
- Future directions: Investigating motion processing in children's development and in bilingual speakers

### Results offline measures

#### Categorization: Manner responses



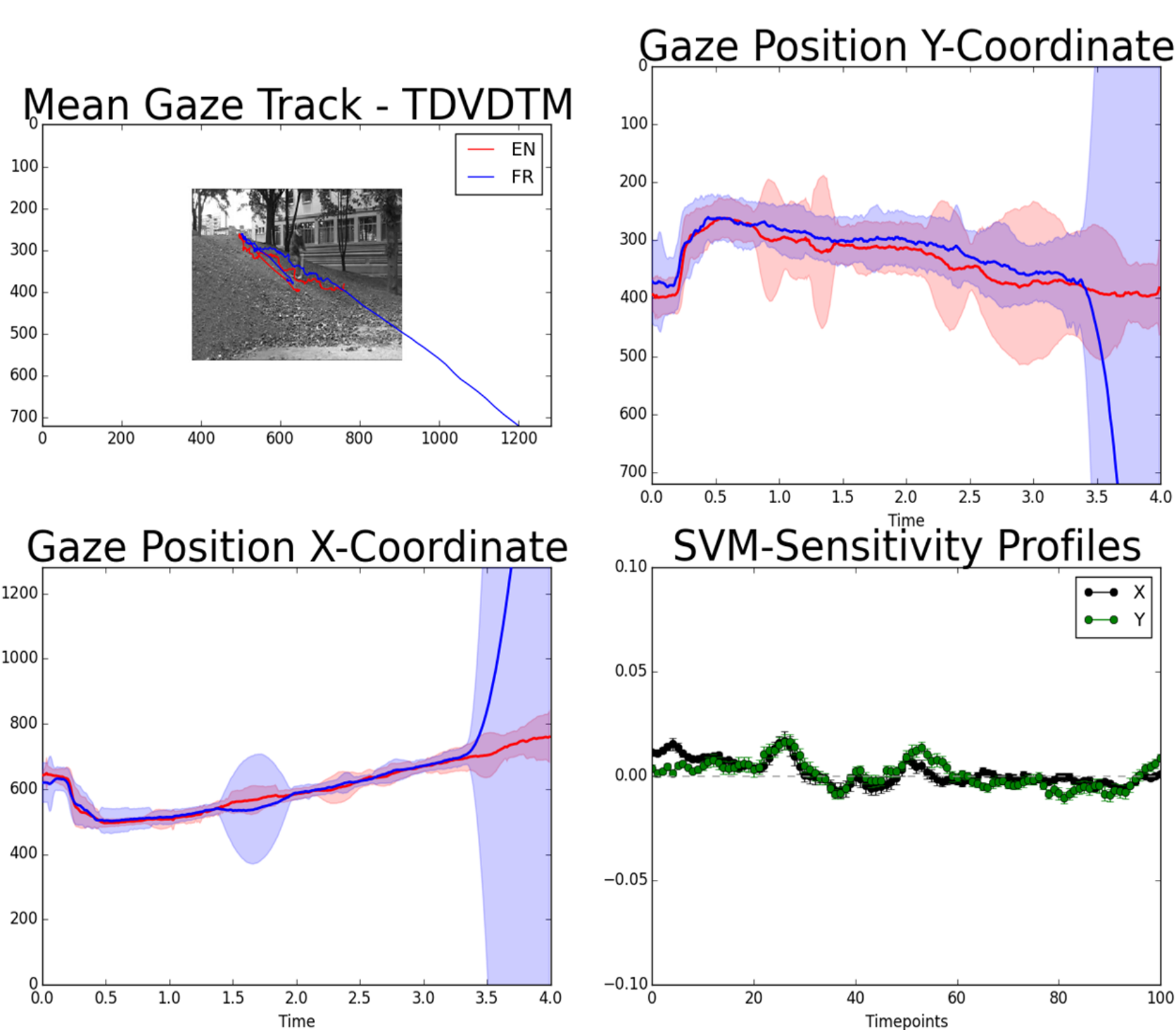
#### Memory: types of recognition error



### Discussion & future directions

### Exploratory gaze analysis [8]

#### Classification using PyMVPA algorithm



predictions\targets	1	2	Summary \ Means:	CHI <sup>2</sup>	19.09
p=0.00026	32	30	ACC	0.5	
	12	10	ACC%	50	

### Contacts

Helen Engemann  
Institut für Psycholinguistik &  
Didaktik der deutschen Sprache  
Goethe Universität Frankfurt  
h.engemann@em.uni-frankfurt.de

Coralie Vincent and  
Maya Hickmann  
Laboratoire Structures  
Formelles du Langage  
CNRS & Université Paris 8

Efstathia Soroli  
Laboratoire Savoirs, Textes,  
Langage  
CNRS & Université Lille 3  
efstathia.soroli@univ-lille3.fr

### References

- Slobin, D. I. (1996). From « thought and language » to « thinking for speaking ». In J. J. Gumperz & S. C. Levinson (ed.), *Rethinking linguistic relativity* (p. 70-96). Cambridge, UK: Cambridge University Press.
- Slobin, D. I. (2004). How people move: Discourse effects of linguistic typology. In C. L. Moder & A. Martinovic-Zic (ed.), *Discourse across languages and cultures* (p. 195-210). Amsterdam & Philadelphia: John Benjamins Publishing.
- Choi, S. & Bowerman, M. (1991). Learning to express motion events in English and Korean: The influence of language-specific lexicalization patterns. *Cognition*, 41, p. 83-121.
- Choi, S. & Hattarup, K. (2012). Relative contribution of cognition/perception and language on spatial categorization. *Cognitive Science*, 36, 102-129.
- Talmy, L. (2000). *Toward a Cognitive Semantics: Typology and Process in Concept Structuring* (Vol. 2). Cambridge (Mass.); London: the MIT Press.
- R Core Team (2015). *R: A language and environment for statistical computing*. R Foundation for Statistical Computing, Vienna, Austria.
- Bates, D., Maechler, M., Bolker, B. & Walker, S. (2015). Fitting Linear Mixed-Effects Models Using lme4. *Journal of Statistical Software*, 67(1), 1-48.
- Hanke, M., Halchenko, Y. O., Sederberg, P. B., Hanson, S. J., Haxby, J. V. & Pollmann, S. (2008). *PyMVPA: A Python toolbox for classifier-based data analysis*. Poster presented at the 34th conference "Psychology and Brain" (Psychologie und Gehirn 2008).