



HAL
open science

The early Turkish pottery productions in western Anatolia: Provenances, contextualization and techniques

Jacques Burlot, S.Y. Waksman, Anne Bouquillon, Joanita Vroom, Beate Böhlendorf Arslan, Sarah Japp

► To cite this version:

Jacques Burlot, S.Y. Waksman, Anne Bouquillon, Joanita Vroom, Beate Böhlendorf Arslan, et al.. The early Turkish pottery productions in western Anatolia: Provenances, contextualization and techniques. XIth Congress AIECM3 on Medieval and Modern Period Mediterranean Ceramics, Oct 2015, Antalya, Turkey. . halshs-01391510

HAL Id: halshs-01391510

<https://shs.hal.science/halshs-01391510>

Submitted on 19 Nov 2016

HAL is a multi-disciplinary open access archive for the deposit and dissemination of scientific research documents, whether they are published or not. The documents may come from teaching and research institutions in France or abroad, or from public or private research centers.

L'archive ouverte pluridisciplinaire **HAL**, est destinée au dépôt et à la diffusion de documents scientifiques de niveau recherche, publiés ou non, émanant des établissements d'enseignement et de recherche français ou étrangers, des laboratoires publics ou privés.

The early Turkish pottery productions in western Anatolia: Provenances, contextualization and techniques

Burlot Jacques*, Waksman Yona*, Bouquillon Anne**, Vroom Joanita***, Böhlendorf Arslan Beate****, Japp Sarah*****

* CNRS UMR 5138, Maison de l'Orient et de la Méditerranée, Lyon, France

** PSL Chimie ParisTech, IRCP UMR 8247 et C2RMF, Paris, France

*** Universiteit Leiden, The Netherlands

**** Römisch-Germanische Zentralmuseum, Mainz, Germany

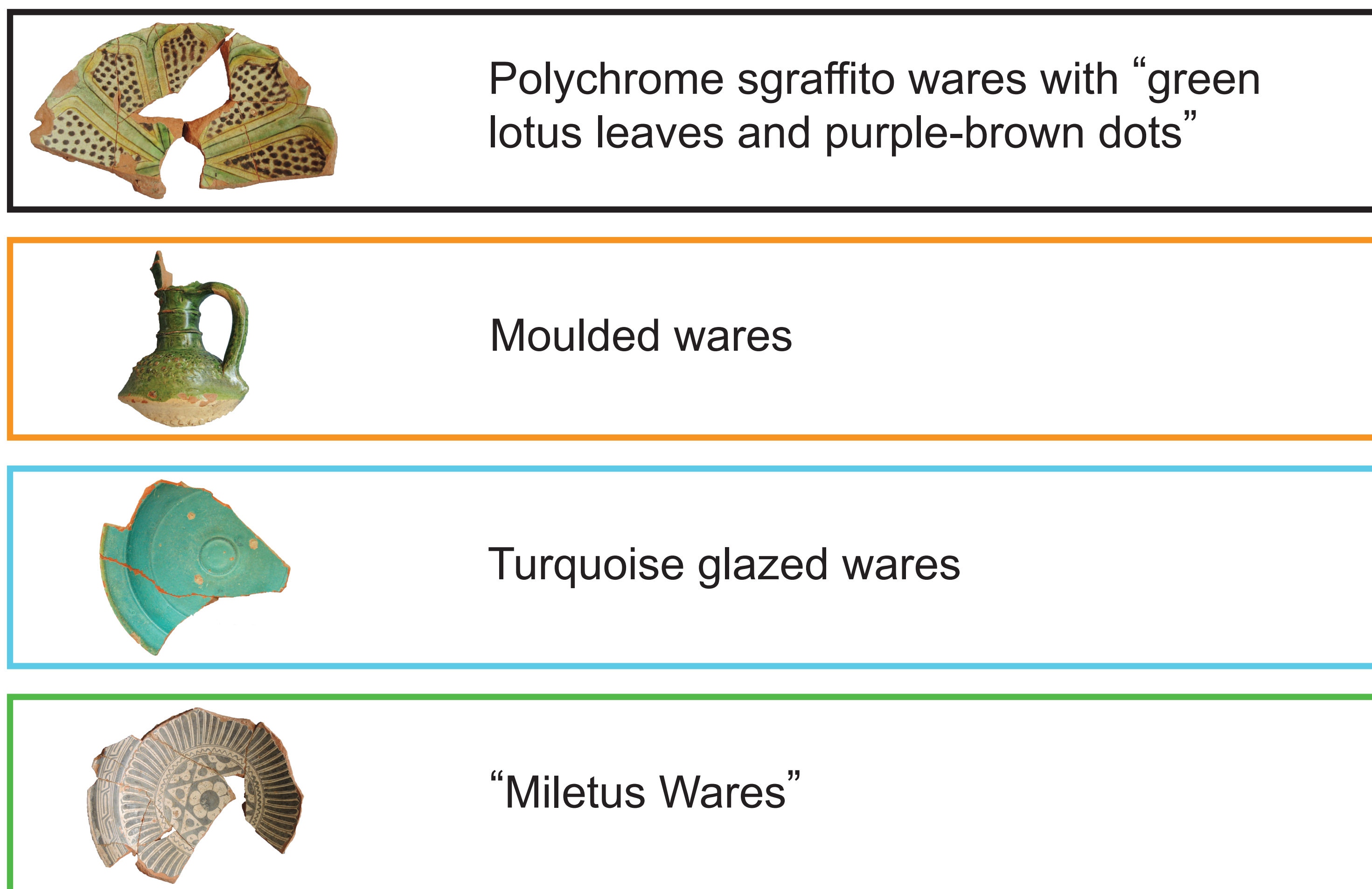
***** Deutsches Archäologisches Institut, Abteilung Istanbul, Turkey

INTRODUCTION

The period dated from the 13th to the 15th centuries is related to the transition between the Byzantine period and the first Turkish ones - *Beylik* and later Ottoman - in western Anatolia. The arrival of these Turkish populations brought about the production of new ceramics types in the region such as: polychrome *sgraffito* with “green lotus leaves and purple-brown dots” decoration, moulded wares, turquoise glazed wares, and the so-called “Miletus Ware”.

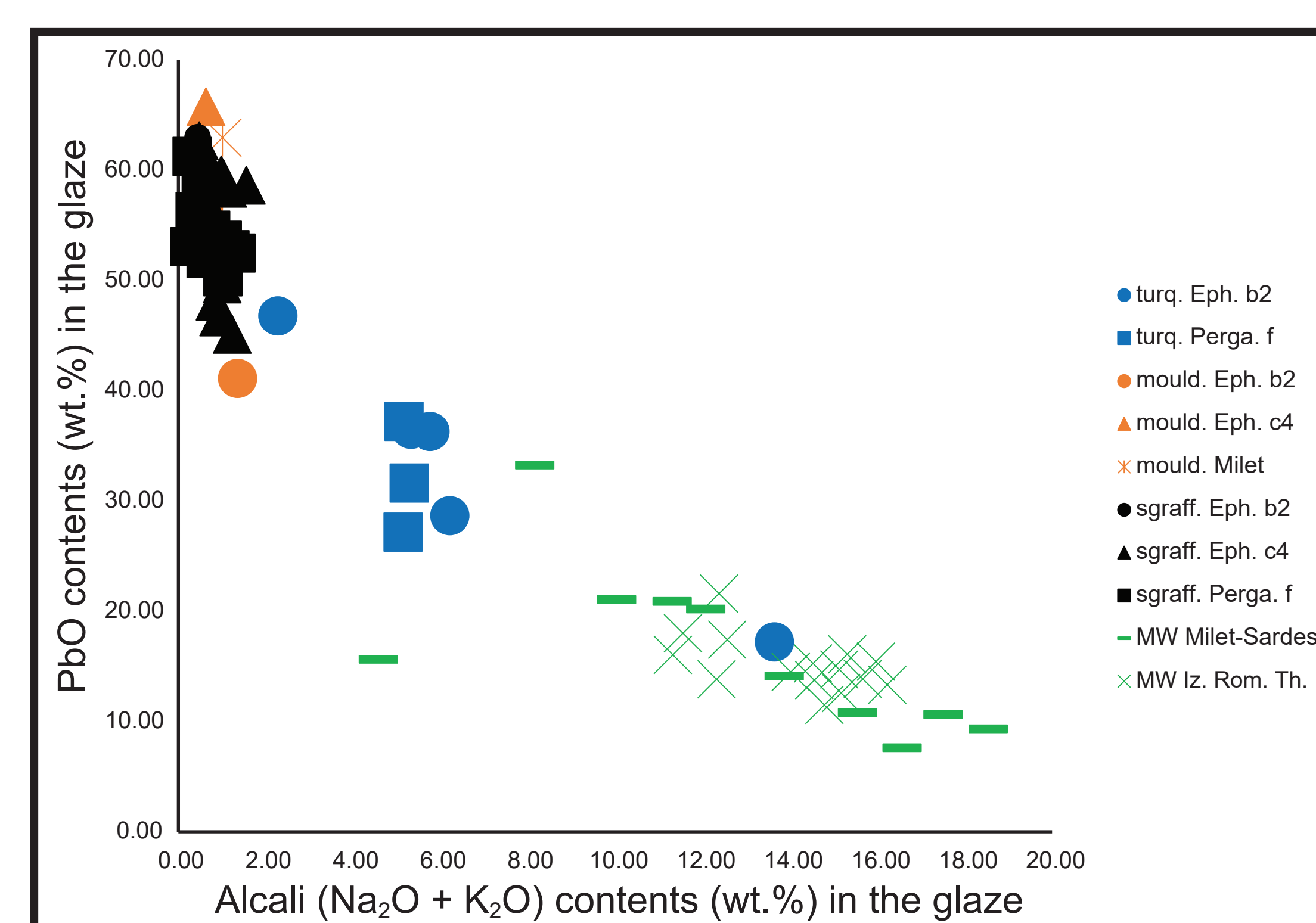
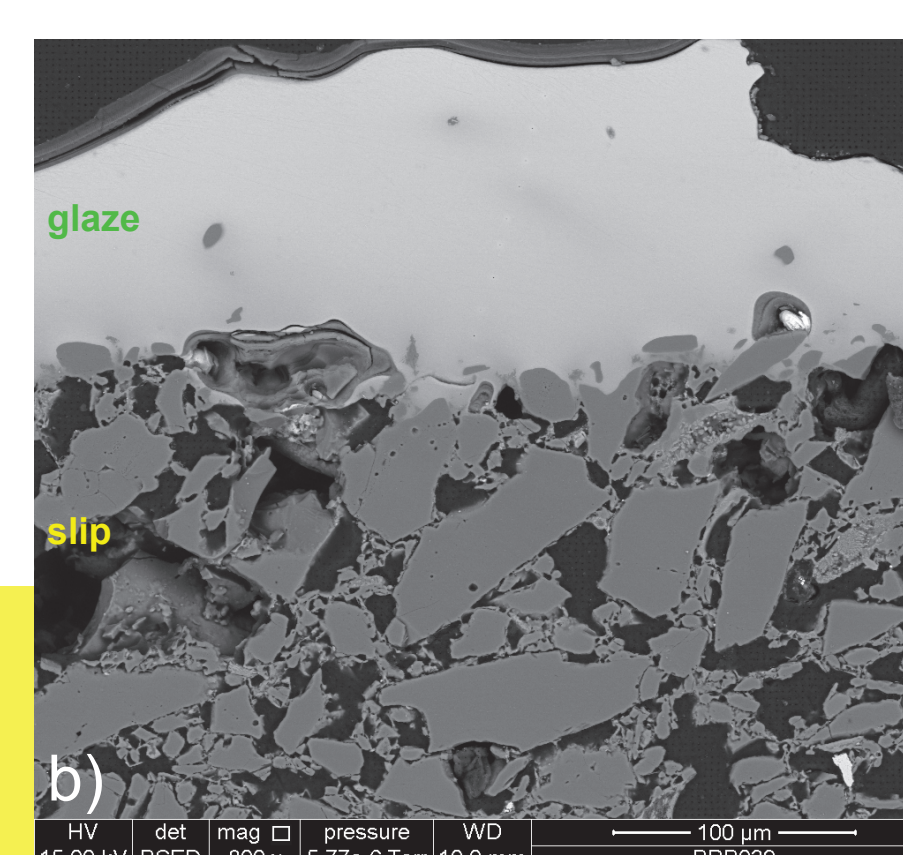
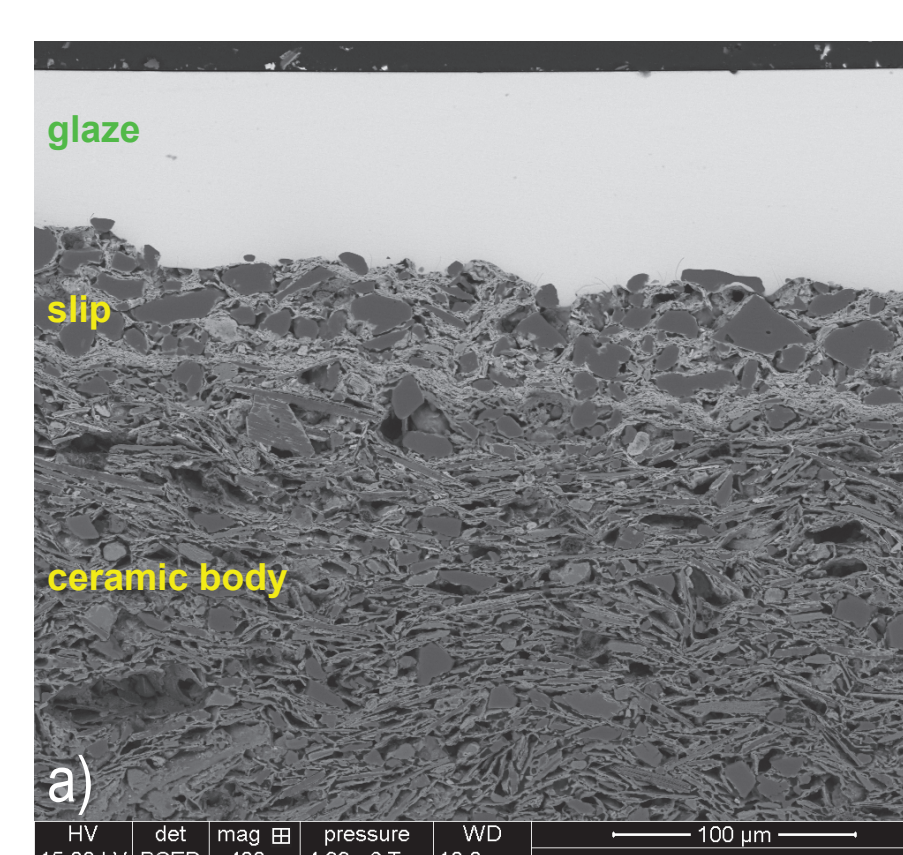
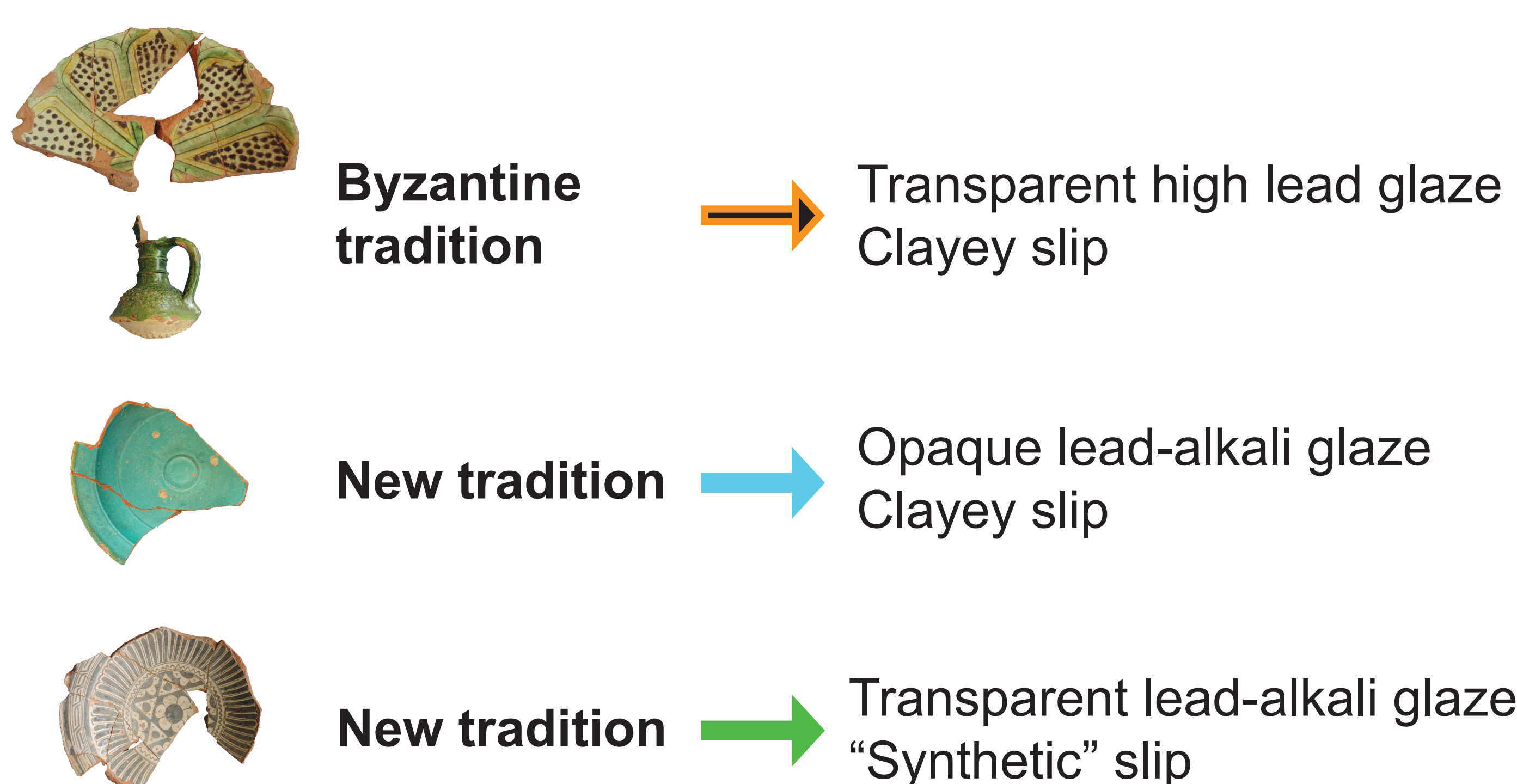
PROVENANCES AND CONTEXTS

Archaeological studies and archaeometric analyses carried out in Lyon on the ceramics bodies have allowed to better define production centres of these new types of ceramics.



PRODUCTION TECHNIQUES: GLAZE AND SLIP

According to analyses using a Scanning Electron Microscope (SEM), the ceramics’ glaze compositions and slip natures are as follows.



Binary diagram showing PbO contents vs. alkali contents (Na₂O+K₂O) in the glazes.

Credits

Map, BSE images, diagram: J. Burlot
Samples pictures: Y. Waksman

SEM images using “backscattered electron” mode:

- a) Cross section showing a glazed ceramic with a clayey slip.
b) Cross section showing a “Miletus Ware” with a “synthetic” slip.

CONCLUSION

The association of archaeological and archaeometric data have allowed defining some of the first Turkish pottery productions in western Anatolia. For instance, we could define three productions of “Miletus Wares”, one of which was manufactured in Iznik and exported to Crimea until the end of the 16th century. Two of them have very similar stylistical and technical features.

As for decoration, the glazes and slips of the polychrome *sgraffito* and the moulded wares follow the Byzantine tradition with high lead glazes and clayey slips. This is not the case for the turquoise wares, whose glaze is coloured by the association of copper and sodium oxides, the later being introduced as a new fluxing element. The “Miletus Wares” are also of lead-alkali glazed type, and present a “synthetic” slip, prefiguring the stone-pastes of Iznik productions.

Bibliography

- Aslanapa, O., 1969. Pottery and Kilns from the Iznik Excavations. In O., Aslanapa & R., Naumann (dir.). *Forschungen zur Kunst Asiens: In Memoriam Kurt Erdmann*. Istanbul, 140-146.
- Böhlendorf-Arslan, B., 2004. *Glasierte byzantinische Keramik aus der Türkei*. Ege Yayinlari, Istanbul.
- Böhlendorf-Arslan, B., 2008. Keramikproduktion im byzantinischen und türkischen Milet. *Istanbuler Mitteilungen*, 58: 371-407.
- Mania, U., 2006. Eine neue Werkstatt früher türkischer Keramik – Miletware aus Pergamon. *Istanbuler Mitteilungen*, 56: 475-501.
- Sauer, R., Waksman, S. Y., 2005. Laboratory investigations of selected medieval sherds from the Artemision in Ephesus. In F., Krinzing (dir.). *Spätantike und Mittelalterliche Keramik aus Ephesos*. Wien, 51-66.
- Teslenko, I. 2007. Turkish ceramics in the Crimea on the eve of the Porta invasion. In S.Y., Waksman (ed.). Papers presented at EMAC '05, Lyon, 2005. British Archaeological Reports S1691, Oxford, 187-193.
- Vroom J., 2005. Medieval pottery from the Artemision in Ephesus: Imports and locally produced wares. In F., Krinzing (dir.). *Spätantike und Mittelalterliche Keramik aus Ephesos*. Wien, 17-49.
- Waksman, S.Y., Spieser J.-M., 1997. Byzantine ceramics excavated in Pergamon. Archaeological classification and characterization of the local and imported productions by PIXE and INAA elemental analysis, mineralogy and petrography. In H., Maguire (dir.). *Materials Analysis of Byzantine Pottery*. Dumbarton Oaks, Washington D.C., 105-133.
- Waksman, S.Y., 2014. Long-term pottery production and chemical reference groups: examples from Medieval Western Turkey. In H., Meyza, K., Domzalski (dir.). *Late Hellenistic to Mediaeval fine wares of the Aegean coast of Anatolia. Their production, imitation and use*. Neriton, Varsovie, 107-125.