



HAL
open science

Infection of *Ixodes ricinus* by *Borrelia burgdorferi sensu lato* in peri-urban forests of France

Axelle Marchant, Alain Le Coupanec, Claire Joly, Emeline Perthame, Natacha Sertour, Martine Garnier, Vincent Godard, Elisabeth Ferquel, Valérie Choumet

► **To cite this version:**

Axelle Marchant, Alain Le Coupanec, Claire Joly, Emeline Perthame, Natacha Sertour, et al.. Infection of *Ixodes ricinus* by *Borrelia burgdorferi sensu lato* in peri-urban forests of France. PLoS ONE, 2017, 12 (8), pp.e0183543. <10.1371/journal.pone.0183543>. <halshs-01591692>

HAL Id: halshs-01591692

<https://shs.hal.science/halshs-01591692v1>

Submitted on 3 Oct 2018

HAL is a multi-disciplinary open access archive for the deposit and dissemination of scientific research documents, whether they are published or not. The documents may come from teaching and research institutions in France or abroad, or from public or private research centers.

L'archive ouverte pluridisciplinaire **HAL**, est destinée au dépôt et à la diffusion de documents scientifiques de niveau recherche, publiés ou non, émanant des établissements d'enseignement et de recherche français ou étrangers, des laboratoires publics ou privés.



Distributed under a Creative Commons CC BY 4.0 - Attribution - International License

RESEARCH ARTICLE

Infection of *Ixodes ricinus* by *Borrelia burgdorferi* sensu lato in peri-urban forests of France

Axelle Marchant¹✉, Alain Le Coupanec¹✉, Claire Joly¹✉, Emeline Perthame², Natacha Sertour¹, Martine Garnier¹, Vincent Godard³, Elisabeth Ferquel¹✉✉, Valerie Choumet^{1,4}✉*

1 Centre National de Référence des *Borrelia*, Institut Pasteur, Paris, France, **2** Institut Pasteur – Bioinformatics and Biostatistics Hub – C3BI, USR 3756 IP CNRS – Bioinformatique et Biostatistique, Paris, France, **3** CNRS-UMR7533/LADYSS, Université de Paris 8 - Saint-Denis, France, **4** Unité Environnement et Risques Infectieux, Institut Pasteur, Paris, France

✉ These authors contributed equally to this work.

✉ Current address: Unité Environnement et Risques Infectieux, Institut Pasteur, Paris, France

* vchoumet@pasteur.fr



OPEN ACCESS

Citation: Marchant A, Le Coupanec A, Joly C, Perthame E, Sertour N, Garnier M, et al. (2017) Infection of *Ixodes ricinus* by *Borrelia burgdorferi* sensu lato in peri-urban forests of France. PLoS ONE 12(8): e0183543. <https://doi.org/10.1371/journal.pone.0183543>

Editor: Utpal Pal, University of Maryland, College Park, UNITED STATES

Received: April 14, 2017

Accepted: August 7, 2017

Published: August 28, 2017

Copyright: © 2017 Marchant et al. This is an open access article distributed under the terms of the [Creative Commons Attribution License](https://creativecommons.org/licenses/by/4.0/), which permits unrestricted use, distribution, and reproduction in any medium, provided the original author and source are credited.

Data Availability Statement: All relevant data are within the paper and its Supporting Information files.

Funding: This work was supported by Institut National de Veille Sanitaire (INVS) and by the Ile-de-France Region under a Partnerships for Citizens for Research and Innovation [PICRI] contract and a call for projects validated by the Scientific Council of the Maison des Sciences de l'Homme Paris Nord.

Abstract

Lyme borreliosis is the most common tick-borne disease in the northern hemisphere. In Europe, it is transmitted by *Ixodes* ticks that carry bacteria belonging to the *Borrelia burgdorferi* sensu lato complex. The objective of this work was to explore eco-epidemiological factors of Lyme borreliosis in peri-urban forests of France (Sénart, Notre-Dame and Rambouillet). We investigated whether the introduction of *Tamias sibiricus* in Sénart could alter the density of infected ticks. Moreover, the density and tick infection were investigated according to the tree species found in various patches of Sénart forest. For this purpose, ticks were sampled during 3 years. In the Sénart forest, the density of nymph and adult ticks showed no significant difference between 2008, 2009 and 2011. The nymph density varied significantly as a function of the month of collection. Regarding the nymphs, a higher rate of infection and infected density were found in 2009. Plots with chipmunks (C) presented a lower density of both nymphs and adult ticks than plots without chipmunks (NC) did. A higher rate of infection of nymphs with *Borrelia* was seen in C plots. The prevalence of the various species of *Borrelia* was also found to vary between C and NC plots with the year of the collect. The presence of chestnut trees positively influenced the density of both nymphs and adults. The infected nymph density showed a significant difference depending on the peri-urban forest studied, Sénart being higher than Rambouillet. The prevalence of *Borrelia* species also differed between the various forests studied. Concerning the putative role that *Tamias sibiricus* may play in the transmission of *Borrelia*, our results suggest that its presence is correlated with a higher rate of infection of questing ticks by *Borrelia* genospecies and if its population increases, it could play a significant role in the risk of transmission of Lyme borreliosis.

Competing interests: The authors have declared that no competing interests exist.

Introduction

Lyme disease is a vector-borne zoonosis that is widespread throughout the northern hemisphere. It is caused by spirochetes belonging to the *Borrelia burgdorferi* sensu lato (sl) complex. This group includes the *Borrelia burgdorferi* sensu stricto (ss) species, as well as *B. afzelii*, *B. garinii*, *B. bavariensis* and *B. spielmanii* [1, 2]. Furthermore, there have been reports of *B. valaisiana* and *B. lusitaniae* detection in samples of human skin [3, 4]. Monitoring of the Lyme disease zoonosis is encouraged as it could be favored by global warming. The disease distribution is directly related to that of the vector, which requires a cool, moist habitat, mostly forest. In Europe, the incidence rates vary from less than 5 per 100,000 in Ireland to 300–350 per 100,000 in Austria, where the highest incidence is currently reported. In France, the incidence varies greatly depending on the region, and has been estimated as a global average of 40 per 100,000 inhabitants [5].

The lack of a notification system, and the difficulty to collect comprehensive clinical data, explain the limited data available in France concerning the exact incidence of the disease, its distribution across regions, and the predominant clinical forms. Another approach to analyze the epidemiology of the disease is to study the vector, *Ixodes ricinus*, the most common tick found in our forests and grasslands. Data including distribution, density and the rate of infection by different pathogens are an indication of the risk to the population in a given region. This analysis of the acarological risk therefore constitutes a complementary approach to epidemiological studies in humans [6, 7].

Since the mid-1990s, there is evidence that this tick is present throughout the French territory, with the exception of the Mediterranean rim and areas over 1200 m in altitude. However, wide variations exist from one region to another and even from one site to another within a given region [6, 7].

The vector of Lyme borreliosis in Europe is *Ixodes ricinus*, whose distribution extends from North Africa to Scandinavia in longitude and Ireland to European Russia in latitude [8]. During its life, the tick goes through two successive stages (larval and nymphal) before reaching the adult form.

The perpetuation of the cycle and the maintenance of bacteria in the natural environment are due to the existence of host species known as reservoirs, which can tolerate and maintain pathogens, but also effectively transmit the pathogen to ticks. The most important species as reservoirs in the cycle of *Borrelia burgdorferi* sl are small mammals, especially rodents, and birds [9–12]. These are specific hosts for some *Borrelia* species, with a particular association between *B. garinii* and birds or between *B. afzelii* and small rodents [13–17]. These preferences seem to be explained by complex interactions between the bacteria and their hosts, which particularly involve the complement system [10, 18, 19].

Our study was focused on peri-urban forests of Île-de-France. These forests are frequented by many visitors and the risk of exposure to tick bites is high. One of them, the Sénart forest, is located 30 km south of Paris (in the Île-de-France region) and has a large number of visitors (3 million per year in the late 1990s) [20]. This forest has the characteristics of being partly invaded by chipmunks (*Tamias sibiricus*). The chipmunk has been introduced from Eurasia, particularly Siberia, China and Korea. The first individuals were released by their owners at the western end of the Sénart forest, in the 1970s [21]. The northeastern part of the forest was colonized recently. Our current study aims to evaluate the evolution of the infection of *Ixodes ricinus* by *Borrelia burgdorferi* sl. by comparing the results obtained during 3 years and to determine the consequences of the proliferation of this non-native rodent species, *Tamias sibiricus*, on the risk of transmission of Lyme borreliosis. For this purpose, we analyzed the rate of infection and the density of infected ticks during 2008, 2009 and 2011 in several locations of

the Sénart forest. These results were compared to those obtained for ticks collected in 2009 in two other peri-urban forests of Île-de-France (Rambouillet and Notre-Dame) that have not yet been colonized by these rodents. Although we found a high rate of infection in plots with chipmunks in the Sénart forest, our results show only a significant difference in 2011 in terms of the density of infected nymphs between locations colonized or not by *Tamias sibiricus*.

Material and methods

Ethics statement

A permission to circulate in the various forests was required to the Office National des Forêts. No specific permission was necessary for tick collection.

Field studies did not involve endangered or protected species. *Tamias sibiricus* is an invasive exotic species of concern at European level and does not require any permission for collection and tick sampling.

Sites of tick collection

To assess the role of *Tamias sibiricus* in the risk of Lyme disease transmission, we performed a longitudinal study from March to October during three years (2008–2009 and 2011) in the Sénart forest and from April to October 2009 in Rambouillet and Notre-Dame forests (Fig 1). To select precisely the stations to study, we relied on 1/25000 maps published by Institut Géographique National (IGN) that were cut into 100m by 100m plots using Photoshop software. Eight locations differing in the presence/absence of chipmunks were chosen at random in the Sénart forest.

Sénart forest. The Sénart forest (3156 ha) is located in the suburban area, 22 km south of Paris in the Essonne department. The main tree species are oak, chestnut, hornbeam, birch, Scots pine and other conifers. Depending on the plot, the distribution of the main tree species is different (S1 Table). The fauna consists in wild boar, roe deer, foxes, hares, rabbits and

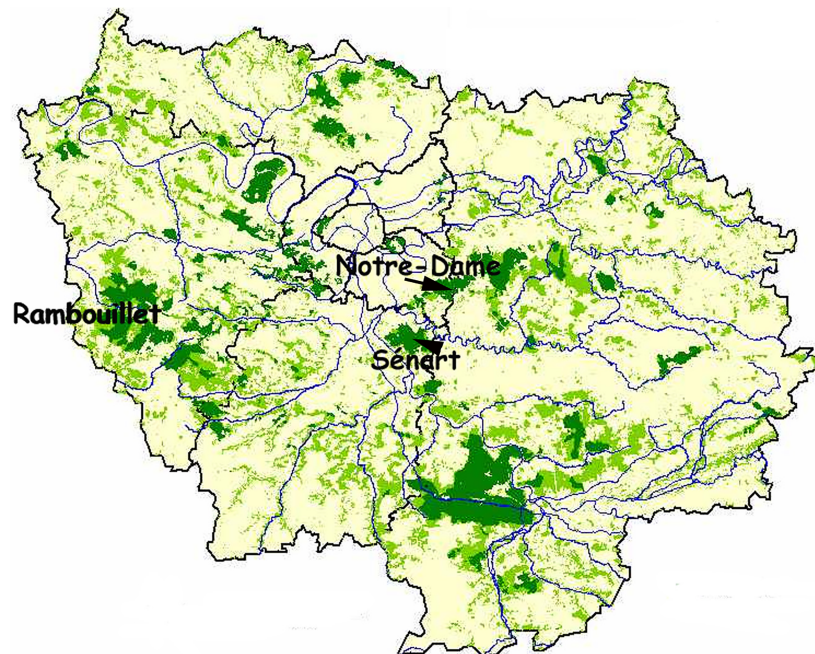


Fig 1. Location of the three forests studied.

<https://doi.org/10.1371/journal.pone.0183543.g001>

squirrels. Among the bird species found in the forest are pigeons, woodcocks, crows, ducks, magpies, blackbirds and jays. 8 plots (SE1, SE2, SE3, SE4, SE5, SE6, SE8 and SE9) were drawn randomly using Epi Info software (Fig 2) (S1 Table). In the field, the stations are found by GPS. Chipmunks were identified in plots SE2 to SE6, few were seen in plot SE1 whereas plots SE8 and SE9 are not invaded yet by these rodents.

Rambouillet and Notre-Dame forests. Rambouillet forest is one of the main forests of Île-de-France. It is a wooded area of 14 550 ha. The tree population consists mainly of oak, up to 68%, and conifers (Scots pine and Corsican pine) to 25%. The large mammal fauna is composed of deer, roe deer and wild boar and among the small mammals, we find the hare, rabbit, European badger, fox, weasel, marten, skunk, dormouse, wood mouse, bank voles, shrews, moles, squirrels and hedgehogs. Many bird species benefit from different habitats provided by the forest, including a number of birds protected at European level as the black woodpecker, the red-backed shrike species, woodpecker, little bittern, the nightjar of Europe and the honey buzzard. 8 plots (R2, R5, R6, R7, R8, R10, R17 and R20) were drawn randomly using Epi Info software (S1 Table).

The Notre-Dame forest (2050 ha) is composed of chestnut (60%); oaks (11%); birch (11%); acacia (10%); other deciduous trees (6%); conifers (2%). It has a rich and diverse fauna and has two types of large animals involved in the life of the ecosystem, wild boars, and roe deer. Small mammals (bank voles), birds (*Turdus* sp.) as well as amphibia were also described. Two plots (ND10 and ND11) were drawn randomly using Epi Info software (S1 Table).

Ixodes ricinus' sampling

Tick sampling was achieved through the flag method that collects the questing ticks [7]. The flag method is considered pertinent to develop a statistically rigorous, objective methodology

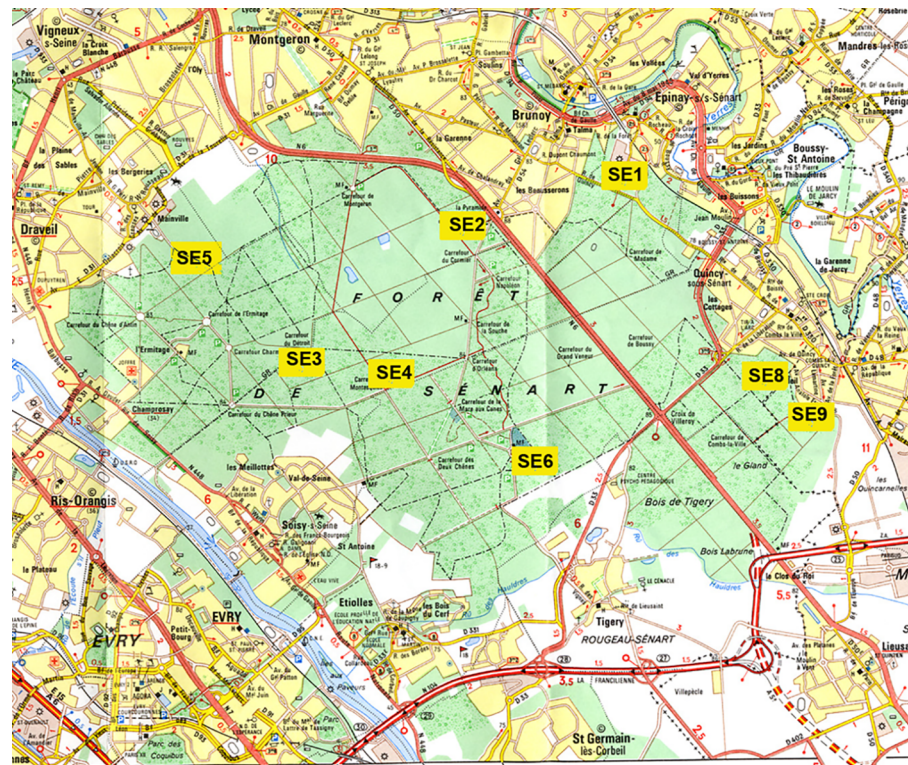


Fig 2. Location of the plots where ticks were collected in the forest of Sénart.

<https://doi.org/10.1371/journal.pone.0183543.g002>

[22]. This method uses a lure that mechanically simulates a host's passage. The collector drags a square of fabric measuring 1m² over a distance of 10 meters at a rate of 50cm per second, in order to collect ticks in an area of 10 m². A total of 16 surveys are conducted per hectare of land to randomly explore 160m² per station. Only adults and nymphs were collected, larvae were merely counted because transovarial transmission is very low [23]. Temperature, hygrometry and time of collect were recorded every month on each plot.

***Ixodes ricinus*' density.** Ticks' density (d), expressed in number of ticks per 100 m, is estimated from the total collected ticks' number according to [7].

Infection rates. The ticks' infection rate is calculated using the following formula:

$$p = f / k$$

f: number of ticks infected with *B. burgdorferi* sl in each plot

k: number of ticks analyzed in each plot

Data comparison. Bivariate analysis: Using the software Statistica, we could test by the Kolmogorov test, the normality of data density and by the Brown-Forsythe test, the homoskedasticity. Since the values did not follow a normal distribution, or because homoskedasticity was not verified, then we applied a Kruskal-Wallis followed by Mann Whitney test, taking into account the Bonferroni correction.

To compare infection rates, we use the χ^2 test (Chi2) Mantel-Haenszel or Fisher's exact test, calculated using Epi-Info. The correlation between the data is made using the Spearman test.

Multivariate analysis: We performed a principal component analysis (PCA), which is a popular dimension reduction method to visualize data. PCA aims at compressing the size of the data in order to extract the most important information. This method offers a simplification of the data while analyzing the structure of both observations and variables [24]. A log10 transformation was applied on the 4 density variables (infected/non infected, nymph/adult) as it increases the inertia of the first 2 principal components leading to a better visualization of the dataset. Note that applying a monotonically increasing transformation such as log10 does not affect the interpretation of correlations.

In this article, the widely used scree rule [25] that was applied to determine the number of components to retain. PCA was performed using the open source statistical software R and the R package FactoMineR that provides a tool to perform and visualize results of PCA. The few missing data were imputed using the R package missMDA that performs multiple imputation using multivariate data analysis. The principal components are computed from active variables, meaning the 4 density variables (infected/non infected, nymph/adult), the 2 infection rates (nymph, adult), the percentages of chestnuts, oaks and pines, temperature, hygrometry and hour. Therefore, the year and the qualitative variables, meaning the month, the chipmunk status and the plot number are projected as supplementary variables on the factorial map.

Chipmunks analysis

Eighty-one chipmunks were captured in September 2008. We extracted 81 ear samples that were analyzed by PCR and RFLP (Restriction Fragment Length Polymorphism) and 60 were placed in culture. All thermo lysates were analyzed by PCR and RFLP if necessary to identify the *B. burgdorferi* sl. species. If the RFLP did not allow clear conclusions to be drawn, then the DNA was sequenced.

The chipmunk density was evaluated during tick collection in the various plots of Sénart. In SE2, SE3, SE4, SE5 and SE6 plots, an average of 4 chipmunks were observed from May to

September during 1h30. In SE1 plot, only 1 chipmunk was observed during 1h30 of collection, whereas no chipmunk was observed in SE8 and SE9 during the same time of collect (Fig 2).

Pathogen detection and identification

Nymph numbers collected by plots can be very large (over 1000 nymphs collected in June), and laboratory techniques are heavy. We therefore analyzed a sample of 30 nymphs and 26 adults randomly per plot which corresponds to the minimum numbers required for statistical analyzes.

DNA extraction. After sampling, ticks were kept alive until analysis [7]. We used a buffer prepared with 5 ml of Tris-HCl (1M, pH 8), 0.5 ml of Tween 20, 200 ml of EDTA (1M, pH 8) and 94.3 ml of distilled water. Knowing that *Borrelia* are, for most of them, located in the gut of the tick, we used fine needles, each tick was lacerated individually in lysis buffer containing proteinase K (for nymphs 2 μ l of proteinase K was added to 50 μ l of buffer and twice as much for adults) under a binocular microscope. Then, tubes containing lysis buffer and dilacerated ticks were placed in a water bath at 56°C for 4 hours minimum to lyse the cells and release the DNA, then at 100°C for 10 min to denature the proteinase K. The samples were then cooled on ice and centrifuged at 14000 rpm. The extracts obtained were stored at 4°C before being analyzed by PCR. For long term storage, the samples were stored at -20°C.

Pathogen DNA detection by polymerase chain reaction (PCR). We performed a gene amplification reaction to detect the presence of the *Borrelia* DNA. To identify *B. burgdorferi* sl, several genomic DNA fragments or plasmid can be amplified [26–28]. As part of our study, the selected region corresponds to the intergenic spacer between the gene encoding subunits 5S (*rrf*) and 23S (*rri*) of ribosomal RNA. This is a single space in bacteria, encoding the ribosomal RNA, with a tandem repeat of 5S and 23S genes specific for the *B. burgdorferi* sl complex [29]. Primers used to amplify this segment are the following: forward 5' GAAAAGAGGAAA CACCTGTT3' and reverse 5' TCGGTAATCTTGGGATCAAT3' at 56°C. In case of doubtful or weak signals, a nested PCR was performed as described in [6] using the following primers: forward 5' CTGCGAGTTCGCGGGAGAG' and reverse 5' TCGGTAATCTTGGGATCA AT3' at 64°C.

***Borrelia burgdorferi sensu lato* species identification by restriction fragment length polymorphism (RFLP).** Complex *B. burgdorferi* sl species identification is based on the analysis of RFLP. Positive PCR products following *rrf-rri* intergenic spacer amplification were digested with the restriction enzyme MseI and analyzed by electrophoresis [30]. According to D. Richter et al. [31], the *rrf-rri* intergenic spacer is a good locus for *Borrelia* taxonomy because it varies widely.

The DNA corresponding to the *Borrelia* restriction profiles that are difficult to identify were sent to be sequenced in order to perform multiple alignments of the sequences obtained with sequences of reference strains using Clustalw. Distances were calculated with Jukes and Cantor correction. From these alignments, a tree was constructed with UPGMA in MEGA 3.1 software.

Tree species in Sénart

We used records of vegetation provided by The Office National des Forêts (ONF) in the studied plots. Different plant species were expressed as percentages for the eight plots analyzed in our study. Moreover, We then tested with a Spearman test if there was a correlation between the frequency of the different species in the 8 plots and various parameter related to *I. ricinus* (density, rate of infection, density of infected ticks) from different plots. We considered that

Table 1. Density and infection status of ticks *I. ricinus* in the forest of Sénart in 2008, 2009 and 2011 on eight plots.

	2008	2009	2011	Statistics	Total
Nymphs (N)	7162	8701	12666	NS	28529
Nymph density/100 m ²	69.9	85.2	126.9		94
Adults (N)	407	495	400	NS	1302
Adult density/100 m ²	4	4.9	4		94
Nymph Infection rate	165/1650	215/1682	139/1641	P<0.0002 2009>2011 = 2008	519/4973
Nymph Infection rate %	10	12.8	8.5		10.4
Adult Infection rates	37/390	52/473	34/363	NS	123/1226
Adult Infection rates %	9.5	11	9.4		10
Density of infected Nymphs/100 m ²	7	11	10.7	P<0.024 2009>2008	9.8
Density of infected Adults/100 m ²	0.4	0.5	0.4	NS	0.4

NS: non-significant; N: number of nymphs and adult collected

<https://doi.org/10.1371/journal.pone.0183543.t001>

the Spearman correlation was moderate with coefficient R values ranging from 0.4 to 0.59 and significant when R was above 0.6 (or less than -0.6).

Results

Collection of ticks: Analysis of total density, infection rate and density of infected ticks

Sénart forest. In the Sénart forest, 28529 nymphs and 1302 adult ticks were collected in 2008, 2009 and 2011 from March to October. 4973 nymphs and 1226 adults were analyzed. The density of nymphs and adults showed no significant difference between the three years of tick collection (Table 1).

The density of nymph showed a significant difference according to the month of collect in 2008, 2009 and 2011, whereas no difference was observed for adults (S2 Table). Regarding the infection rate of nymphs, a significant difference ($p < 0.0002$) was found between the years, 2009 being higher than 2008 and 2011. The density of infected nymphs was significantly higher in 2009 than in 2008 ($p < 0.024$). Density of infected adult ticks showed no difference according to the year of the collect.

We performed a PCA analysis in order to extract the most important information. The elbow rule suggests retaining 2 dimensions, which explain 31.22% of inertia for first axis and 19.85% for second axis. This means that 51.07% of the information contained in the data can be summarized on a 2 dimensions map. According to the correlation circle displayed in Fig 3, two groups of correlated variables are discerned: the first dimension discriminates observations with larger values for densities, infection rate of adults and percentage of chestnuts on the right of the factorial map.

The correlation matrix displayed in S3 Table gives more insight about correlations among this collection of variables: variables characterizing the first dimension of PCA are positively correlated. This means that observations with positive coordinates on the first dimension exhibit larger values for this group of variables (right panel of the Fig 3). In the same manner, hour, temperature, hygrometry, percentages of oaks and pines and infection rate of nymphs contribute most to dimension 2. The S3 Table highlights that hour and temperature are positively correlated while temperature and hygrometry are negatively correlated which is rather consistent. Fig 4 and S1 and S2 Figs display the scatter plot of observations, in the factorial

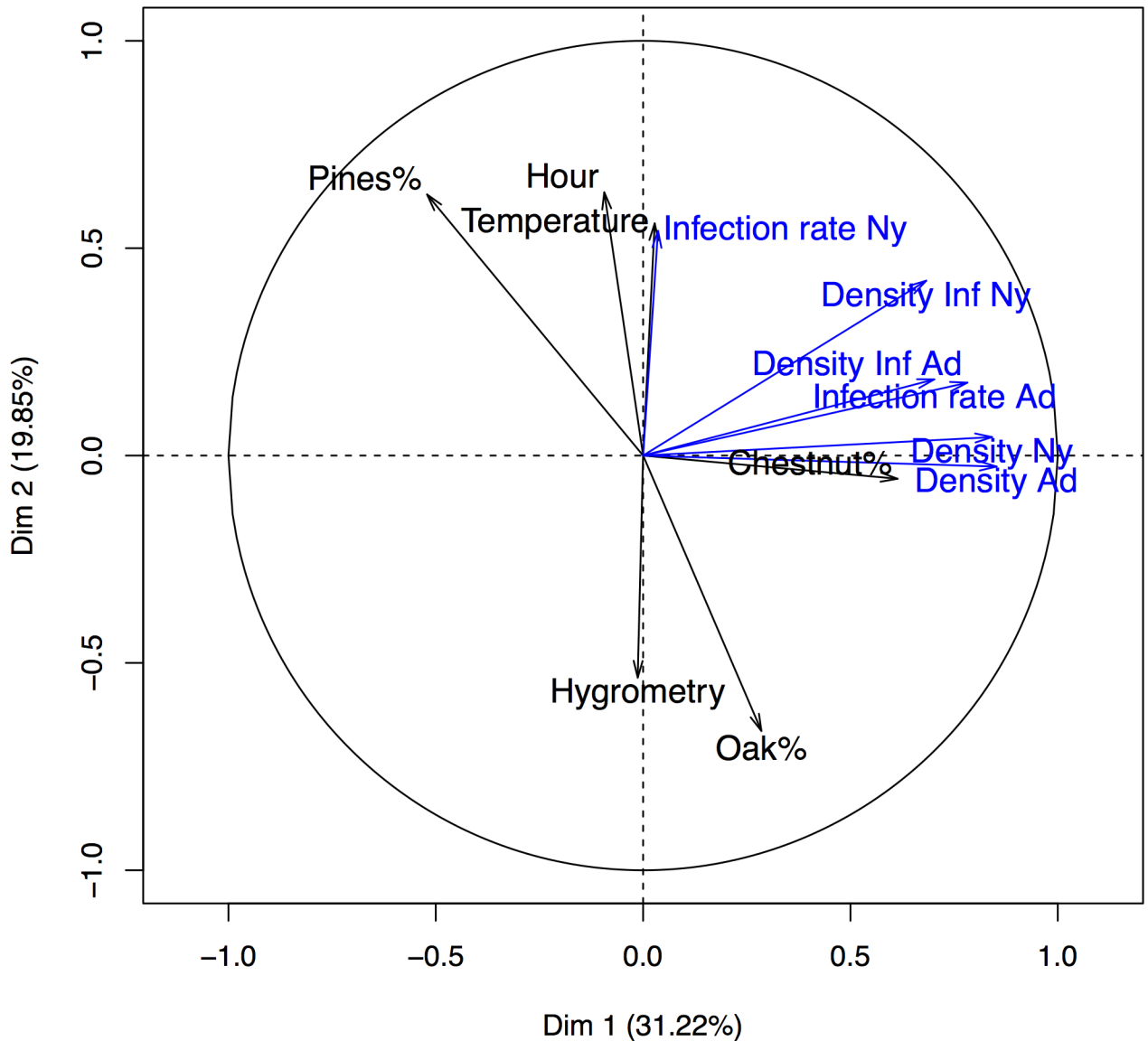


Fig 3. Graph of variables computed by PCA. The tick variables (density, infection rate, density of infected ticks) are presented in blue while in black tree species and climatic data are represented.

<https://doi.org/10.1371/journal.pone.0183543.g003>

map. The dots are colored according to the chipmunk status (Fig 4), year of the experiment (S1 Fig) and month (S2 Fig).

On Fig 4, one can notice that the first dimension efficiently discriminates the observations according to the chipmunk status of the corresponding plots. This figure also suggests that the absence of chipmunks and larger percentages of chestnuts are associated to larger values of densities (infected or not) of nymphs and adults and infection rate of adult ticks. The scatter plots of S1 and S2 Figs show that no cluster of years or months is observed that suggests that plots are homogenous.

Rambouillet and Notre-Dame forests in 2009. In the Rambouillet and Notre-Dame forests in 2009, respectively, 4587 and 941 nymphs and 261 and 49 adults were collected between April and October. 1234 and 326 nymphs and 239 and 46 adults were analyzed respectively for

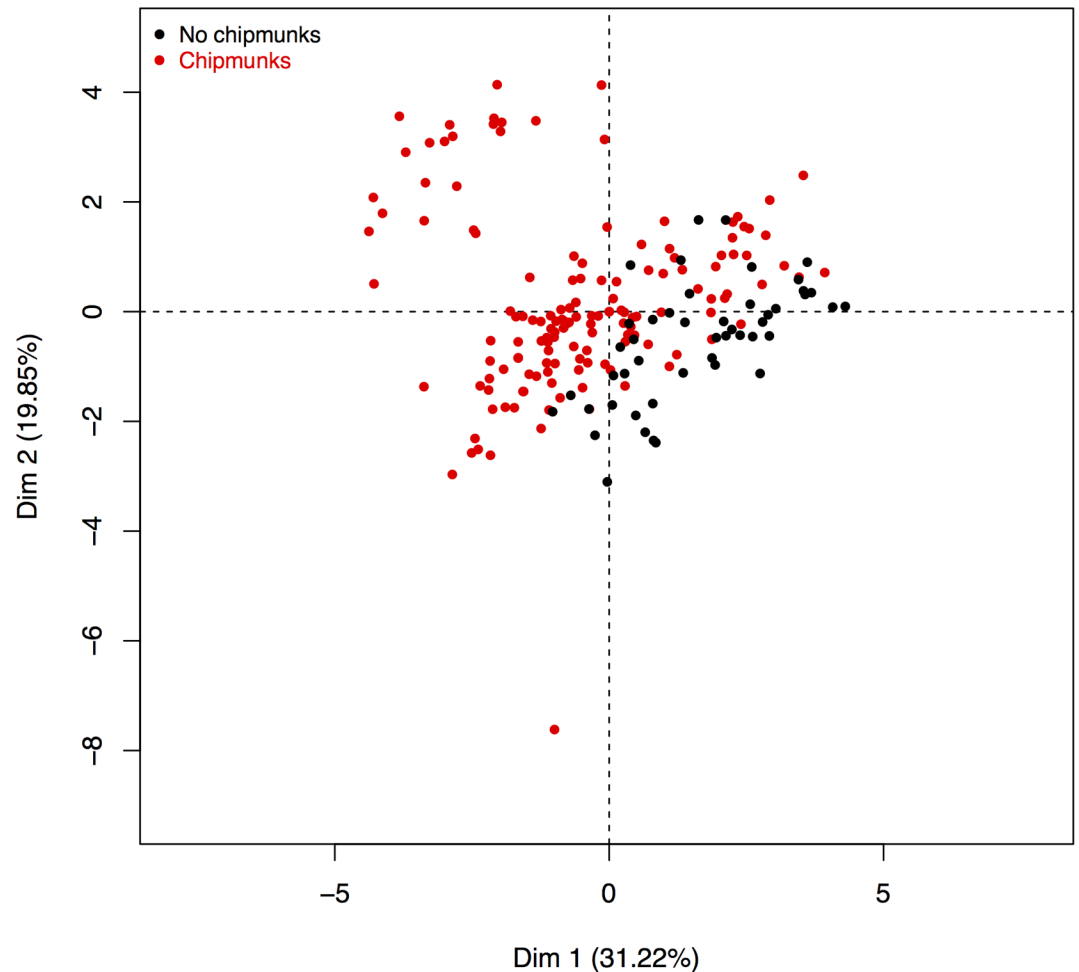


Fig 4. Factorial map of PCA. The dots are colored according to the chipmunk status (in black: plot with no chipmunk, in red, plots with chipmunks).

<https://doi.org/10.1371/journal.pone.0183543.g004>

each forest. The density of nymphs and adult ticks, their rate of infection and the density of infected ticks according to the month of collection in these 2 forests were compared to the same parameters in the Sénart forest over the same time period (S4 Table).

The nymph and adult densities were similar in Sénart, Notre-Dame and Rambouillet forests (S4 Table) while the infection rate of nymphs was significantly higher in Sénart than in Rambouillet ($p < 0.002$) but was similar to Notre-Dame. The density of infected nymph was higher in Sénart than in Rambouillet and Notre-Dame whereas the infected adult densities did not differ significantly, regardless of the forest.

Influence of *Tamias sibiricus* in the Sénart forest

We first compared six plots on which chipmunks are present (C plots: SE1, SE2, SE3, SE4, SE5 and SE6) and two plots without chipmunks (NC plots: SE8 and SE9). These plots were further subdivided in three series according to chipmunk abundance: α plots on which the chipmunks are present in large numbers (SE2 to SE6), with β plot (SE1) with few chipmunks and γ plots without chipmunks (SE8 and SE9) (Fig 2). We also compared these results to those obtained in Rambouillet and Notre-Dame where this non-native species has not been introduced.

Table 2. Role of chipmunks on the density and infection of *I. ricinus* ticks in the forest of Sénart in 2008, 2009 and 2011.

	2008 C plots	2008 NC plots	Statistics 2008 C/NC	2009 C plots	2009 NC plots	Statistics 2009 C/NC	2011 C plots	2011 NC plots	Statistics 2011 C/NC	Statistics 2008-2009-2011 C plots	Statistics 2008-2009-2011 NC plots
Density of Nymphs /100 m ²	55.5	113.4	p<0.0009 NC> C	62.8	152.3	p<0.011 NC> C	67.7	300.8	p<0.0000 NC> C	NS	p<0.002 2008 = 2009 2008<2011 2009<2011 2011>2009 = 2008
Density of Adults /100 m ²	2.2	9.3	p<0.0000 NC> C	3.2	9.8	p<0.00001 NC> C	1.6	10.9	p<0.0000 NC> C	NS	NS
Nymph infection rates	12.1%	4.8%	p<0.0000 C>NC	14.5%	8.5%	p<0.0001 C>NC	9.7%	5.6%	p<0.003 C>NC	p<0.002 2009>2011 2009 = 2008 2008 = 2011	NS
Adult infection rates	11.3%	8.2%	NS	14.8%	7.4%	p<0.01 C>NC	10.1%	9%	NS	NS	NS
Density of infected Nymphs/100 m ²	6.7	5.4	NS	9.1	13	NS	6.5	16.8	p<0.026 NC> C	NS	p<0.0057 2008<2009 2008<2011 2009 = 2011 2011 = 2009>2008
Density of infected Adults/100 m ²	0.2	0.8	p<0.002 NC> C	0.5	0.7	NS	0.2	1	p<0.0021 NC> C	NS	NS

NS: non-significant

<https://doi.org/10.1371/journal.pone.0183543.t002>

Comparison of tick parameters in C and NC plots. We observed a difference in the density of nymphs and adults for all years, C plots having a significantly lower density than NC plots (Table 2). Infection rates of nymphs were higher in C plots whatever the year of collection while that of adults was only significantly higher in 2009. Density of infected nymphs differs significantly between NC and C plots only in 2011, and in 2008 and 2011 for adults, NC plots presenting a higher density than C plots (Table 2).

The two series of plots were compared between years. For C plots, we only observe a difference in the rate of infection of nymphs (p<0.002), 2009 being higher than 2011. For NC plots, the density of nymphs was significantly different according to the year (p<0.002), 2011 being higher than 2009 and 2008). Density of infected nymphs was also significantly different (p<0.006); 2008 being lower than 2011 and 2009.

Comparison of tick parameters between α, β and γ plots. Sénart forest: S3 Fig shows that PCA analysis supports the subdivision of plots with no (α), few (β) and with chipmunks (γ). We then compared globally the density of the nymphs and adult ticks collected on α, β and γ plots in 2008, 2009 and 2011. A significantly higher density was observed in β and γ plots compared to α plots for both nymphs and adults (p < 0.0001) (S5 Table). The infection rate of nymphs was shown to vary significantly whatever the year, that of γ plots being the lowest. For adults, a significant difference was observed only in 2009, the rate of infection in γ plots being lower than in β plot. In 2008 and 2011, the density of infected nymphs in α plots was inferior

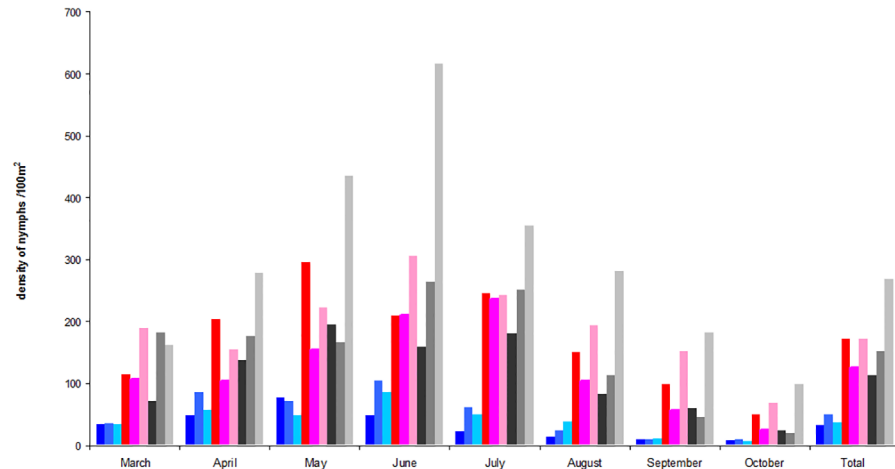


Fig 5. Density of *I. ricinus* nymphs in the five plots with chipmunks (α), one with little chipmunk (β) and two plots without chipmunk (γ) from the forest of Sénart in 2008, 2009 and 2011. α plots in 2008 (dark blue square), α plots in 2009 (cobalt blue), α plots in 2011 (aquamarine square); β plots in 2008 (red square), β plots in 2009 (fuchsia square), β plots in 2011 (pink square); γ plots in 2008 (black square), γ plots in 2009 (grey square), γ plots in 2011 (light grey square).

<https://doi.org/10.1371/journal.pone.0183543.g005>

to β plot. Regarding the adults, a significantly higher infected density was found in β and γ plots in 2008 and 2009 compared to α plots.

We compared also the density of nymphs and adults in each group of plots according to the year of collect. We found only a difference on γ plots, for which the density of nymphs was higher in 2011 ($p < 0.002$) (S5 Table).

The rate of infection of nymph shows only a difference on α plots, which was higher in 2009 than 2011 ($p < 0.002$) (S5 Table). For adults, no difference was observed in the various series of plots whatever the year.

The density of infected nymphs showed a difference on γ plots, which was lower in 2008 ($p < 0.006$).

The density of nymphs and adults was grouped during the three years of collect and compared according to the month of collect for each group of plots (Figs 5 and 6). We only found a significant difference in α plots ($p < 0.0001$), for which the density of nymphs in August, October and November was lower compared to that of the other months. The same comparison was performed for adult ticks and did not provide any significant difference whatever the month of collect and the group of plots studied.

Comparison of Sénart forest with Rambouillet and Notre-Dame forests in 2009

When these data were compared to those obtained in the other forests studied during the same months of 2009, the adult and nymph density was significantly higher ($p < 0.0001$ and $p < 0.02$ for adult and nymphs respectively) in NC plots of Sénart (SNC) compared to Rambouillet and Notre-Dame forests (Table 3). The adult infection rate is higher in Rambouillet than in SNC plots ($p < 0.004$). The density of infected nymphs was higher in SNC plots than in Rambouillet and Notre-Dame ($p < 0.019$).

We did not find any difference in the density of adults and nymphs between C plots of Sénart and plots of the two other forests. The nymph infection rate of the C plots of Sénart forest was higher than for the nymphs collected in Rambouillet and Notre-Dame forests ($p < 0.0001$),

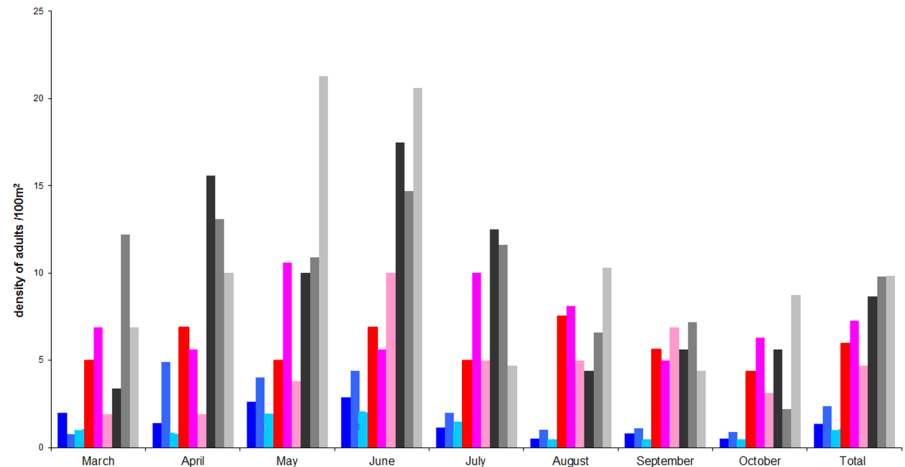


Fig 6. Density of *I. ricinus* adults in the five plots with chipmunks (α), one with little chipmunk (β) and two plots without chipmunk (γ) from the forest of Sénart in 2008, 2009 and 2011. α plots in 2008 (dark blue square), α plots in 2009 (cobalt blue square), α plots in 2011 (aquamarine square); β plots in 2008 (red square), β plots in 2009 (fuchsia square), β plots in 2011 (pink square); γ plots in 2008 (black square), γ plots in 2009 (grey square), γ plots in 2011 (light grey square).

<https://doi.org/10.1371/journal.pone.0183543.g006>

whereas a similar rate of infection was observed for adults in the forests of Rambouillet, Notre-Dame and the C plots of the Sénart forest (Table 3).

Infection of ticks in the different forests by *Borrelia* genospecies

A total of 36047 ticks were collected from 2008, 2009 and 2011 in the forests of Sénart, Notre-Dame and Rambouillet and 8253 ticks were analyzed. We first analysed the polymorphism of the *rrf-rrl* spacer after digestion with *MseI*. The patterns obtained allowed various strains belonging to various groups in several species to be identified.

Sénart forest. In 2008, 2009 and 2011, *B. afzelii*, *B. burgdorferi* ss and *B. garinii* were the most prevalent species identified in nymphs, with variations according to the year of collect. Regarding the comparison between C and NC plots, again the same three species were

Table 3. Comparison of characteristics of *I. ricinus* ticks in the forests of Sénart (C and NC plots), Rambouillet and Notre-Dame in 2009.

	Sénart C plots	Sénart NC plots	Rambouillet	Notre-Dame	Sénart C plots Rambouillet Notre-Dame	Sénart NC plots Rambouillet Notre-Dame
Density of Nymphs/100 m ²	56.9	154	60.6	49.1	NS	p<0.02 SNC>R = ND
Density of Adults/100 m ²	2.9	10	3.5	2.6	NS	p<0.0001 SNC>R = ND
Infection rate of Nymphs	15%	9%	8.8%	9.8%	<0.000007 SC>ND = R	NS
Infection rate of Adults	14.9%	7%	17.6%	8.7%	NS	p<0.004 R>SNC
Density of infected Nymphs/100 m ²	9	14.1	5.3	4.8	NS	p<0.019 SNC>R = ND
Density of infected Adults/100 m ²	0.3	0.7	0.6	0.2	NS	NS

SNC SNCNS: non-significant; SNC: NC plots of Sénart; R: Rambouillet; ND: Notre-Dame

<https://doi.org/10.1371/journal.pone.0183543.t003>

Table 4. Prevalence of *Borrelia* species in nymphs collected in 2008, 2009 and 2011 in α , β and γ plots of the Sénart forest.

Nymphs	2008 total plots %	2009 total plot %	2011 total plots %	Statistics years	2008 2009 2011 α plots %	2008 2009 2011 β plots %	2008 2009 2011 γ plots %	2008 2009 2011 total plots %	Statistics $\alpha / \beta / \gamma$
<i>B. afzelii</i>	32	47	21	p<0.000001 2009>2008	36	34	33	35	NS
<i>B. burgdorferi ss</i>	27	30	30	NS	29	15	37	29	p<0.008 $\gamma = \alpha > \beta$
<i>B. garinii</i>	21	10	21	p<0.005 2008 = 2011>2009	14	34	13	17	p<0.000015 $\beta > \alpha = \gamma$
<i>B. lusitaniae</i>	4.2	0.5	9.4	p<0.0002 2011>2009 2011 = 2008 2008 = 2009	5.8	0	0	4	p<0.0 $\alpha > \gamma$
<i>B. spielmanii</i>	1.8	1.4	2.2	NS	1.4	0	4.4	1.7	NS
<i>B. valaisiana</i>	12	5.6	12	NS	9.4	12	6.6	9.2	NS
Co-infection	2.4	6	4.3	NS	4.2	4	5.5	4.4	NS
Percentage of infected ticks	10	12.8	8.5	p<0.0002 2009>2011 = 2008	12.84	9.31	6.31	10.44	$\alpha > \beta > \gamma$
Statistics	<i>Ba = B. bss = B.g</i>	<i>Ba>Bbss>Bg</i>	<i>Bbss = Bg = Ba</i>		<i>B.a = B. bss>B.g</i>	<i>B.a = B. g>B.bss</i>	<i>B.bss = Ba>B.g</i>	<i>Ba = Bbss>B.g</i>	

NS: non-significant; *Ba*: *B. afzelii*; *Bg*: *B. garinii*; *Bbss*: *B. burgdorferi ss*;

<https://doi.org/10.1371/journal.pone.0183543.t004>

prevalent with variations only for *B. afzelii* in 2011 and for *B. burgdorferi ss* in 2008 (C<NC) (S6 Table). When α , β and γ plots were compared, again these species were the most prevalent with variations observed according to the year for *B. burgdorferi ss* and *B. garinii*. Interestingly, *B. lusitaniae* were only identified in α plots, whatever the year of collect (Table 4).

For adults, in 2008, 2009 and 2011, four species were found more prevalent: *B. burgdorferi ss*, *B. garinii*, *B. afzelii* and *B. valaisiana*. The same trend is observed on C and NC plots as well as on α , β and γ plots of Sénart (S7 Table).

Comparison with other forests of Île-de-France. We compared the results obtained at Sénart (C and NC plots were grouped since no significant difference was found between them for each species) with those obtained at Rambouillet and Notre-Dame forests in 2009 (Fig 7). Regarding the infection of nymphs by *B. afzelii*, a significant difference was found between the forests (p < 0.00001). No difference was observed between Sénart (47.3%) and Notre-Dame (37.5%) but a difference was found between Sénart and Rambouillet (11.9%) (p<0.00001) and between Notre-Dame and Rambouillet (p<0.0009). Similarly, there is a significant difference in the infection of nymphs with *B. garinii* between the different forests (p < 0.0001) (Fig 7). Indeed, this is the species mainly found in the nymphs of Rambouillet forest (41.3% of all species) while the levels are significantly lower for nymphs of Sénart (11.4%) (p<0.00001). There is no significant difference in the infection of nymphs with *B. burgdorferi ss* between the different forests. There is a significant difference for *B. valaisiana*, in Rambouillet where the prevalence of this species is higher (16.5%) than in Sénart (4.8%) (p<0.0011). Regarding *B. spielmanii* and *B. lusitaniae*, and co-infections, there is no significant difference in the infection of ticks between the various forests (Fig 7).

***Borrelia* species found in Siberian chipmunks captured in the Sénart forest.** Eighty-one chipmunks were captured in September 2008. We extracted 81 ear samples that were analyzed by PCR and RFLP. Sixty three percent of the 81 ear samples were found *Borrelia*-positive by

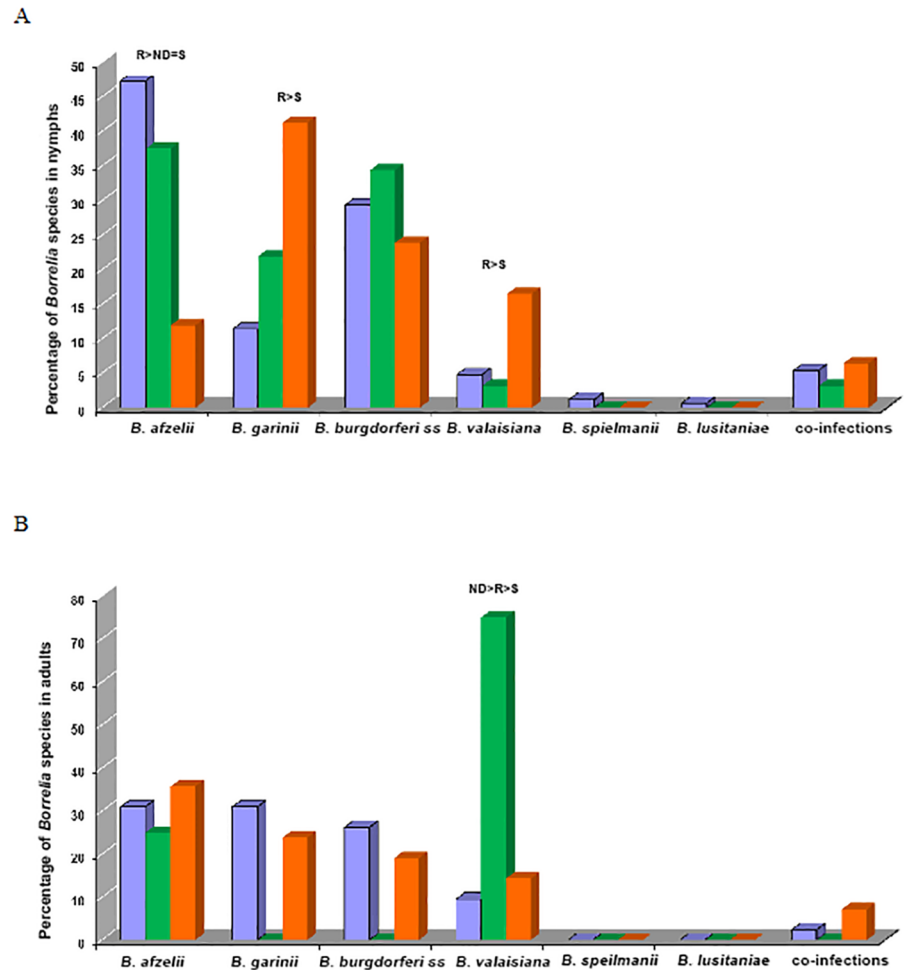


Fig 7. Comparison of the prevalence of the various *Borrelia* species in the peri-urban forests of Rambouillet, Notre-Dame and Sénart. ND: Notre-Dame (green square); R: Rambouillet (red square); S: Sénart (blue square). Regarding the adult ticks in 2009, no significant difference was shown in the various forests, except for *B. valaisiana* ($p < 0.002$), which is prevalent in the forest of Notre-Dame (75%) ($p < 0.009$).

<https://doi.org/10.1371/journal.pone.0183543.g007>

PCR. Of the 60 ear samples cultured, 23 (38.3%) were positive for *Borrelia burgdorferi* sl. and eighteen of these were grown (30%).

Siberian chipmunks are infected with only three species of *Borrelia* (*B. afzelii*, *B. burgdorferi* ss and *B. bavariensis*) as shown in Fig 8.

Tree species. We first considered the correlation between the density of nymphs and adults with the tree species and focused our analysis on plots of Sénart forest. According to correlation tests between the nymph and adult density per plot and vegetation of these plots, only three tree species gave significant p values: chestnut ($p < 0.00001$), ash ($p < 0.01$) and pines ($p < 0.001$). However, only the chestnut tree has a good correlation coefficient for 2008 and 2011 ($R > 0.6$) (Table 5). Similarly for adult ticks, only the correlation coefficient between adult density and the percentage of chestnut tree was significant ($R > 0.6$) (Table 5). We observe only a moderate correlation during 2009 both for nymph and adult densities (Table 5). We thus observed a positive correlation between the density of *I. ricinus* and the percentage of chestnut trees in the plots examined during 2008 and 2011, density which was high

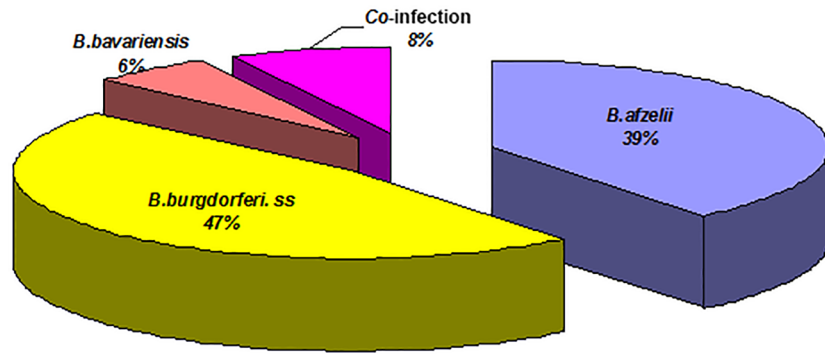


Fig 8. Infection rates (%) of *Borrelia* species identified in Siberian chipmunks collected in Sénart in 2008.

<https://doi.org/10.1371/journal.pone.0183543.g008>

Table 5. Correlation between the presence of chestnut trees and the tick density.

	Nymphs density		Adult density	
	R	p_value	R	p_value
2011	0.74	7.4e ⁻¹²	0.74	1.475e ⁻¹¹
2009	0.35	0.005	0.45	0.0002
2008	0.64	2.7e ⁻⁰⁷	0.61	1.189e ⁻⁰⁷
3 years	0.57	2.2e ⁻¹⁶	0.59	2.2e ⁻¹⁶
2011+2008	0.67	2.2e ⁻¹⁶	0.68	2.2e ⁻¹⁶

<https://doi.org/10.1371/journal.pone.0183543.t005>

in NC plots of the Sénart forest. The other characteristics (rate of infection, density of infected nymphs and adults) did not vary according to the tree species.

Table 6 summarizes the influence of several factors (environmental, animal, year) on tick density and infection.

Table 6. Summary of all factors that influence tick density and infection.

Factor	Density of Nymphs	Density of infected Nymphs	Density of Adults	Density of infected Adults	Infection rate of Nymphs	Infection rate of Adults
Year	No	Yes	No	No	Yes	No
		2009>2008			2009>2008 = 2011	
Chipmunks (SNC/SC plots)	Yes	Yes	Yes	Yes	Yes	Yes
	SNC>SC	SNC>SC	SNC>SC	SNC>SC	SC>SNC	SC>SNC
	2008, 2009, 2011	2011	2008, 2009, 2011	2008 and 2011	2008, 2009, 2011	2009
Chipmunks* (α/β/γ plots)	Yes	Yes	Yes	Yes	Yes	Yes
	γ = β > α	γ = β > α	γ > β > α	γ = β > α	α > β = γ	α = β > γ
Chestnut tree	Yes	No	Yes	No	No	No
Forest: Sénart Rambouillet Notre-Dame	No	Yes	No	No	Yes	No
		S>R			S>R	
Forest: Sénart NC RambouilletNotre-Dame	No	Yes	Yes	No	No	Yes
		SNC>R				SNC >R = ND

* We combined the results obtained during the three years of collect.

S: Sénart forest; R: Rambouillet forest

<https://doi.org/10.1371/journal.pone.0183543.t006>

Phylogenetic analyses of *Borrelia* amplification products of *rrf-rrl* spacer. The patterns obtained after digestion of the *rrf-rrl* spacer with *Mse*I allowed various strains belonging to various groups in several species to be identified (Table 7) (Fig 9). Several cases of co-infections were detected, the more frequent implying *B. afzelii* and *B. burgdorferi* ss on one hand and *B. garinii* and *B. valaisiana*, on the other hand. To further evaluate the polymorphism, the spacer regions of the strains whose *Mse*I restriction profiles somewhat differ from that of reference strains were sequenced and compared with sequences available in databases. The phylogenetic analyses of *rrf-rrl* spacer sequences were conducted by neighbour joining.

Sequence analysis of *B. afzelii* identified five subtypes/groups consistent with the existence of various restriction patterns, in 2008, 2009 and 2011 (Fig 9, Table 7, S4 Fig). Group A contains sequences identical to AB178338.8 isolated from *I. ricinus* in Russia [32] and Group B contains sequences identical to GQ369937 isolated from rodents in China [33]. Group C contains sequences identical to AB178349 isolated from rodents in Russia [32] while group D contains sequences identical to HM173577 isolated from *I. ricinus* in Sweden [34]. We did not find any sequences in the databank 100% identical to that of group E. This group was new and identified in ticks as well as in *Tamias sibiricus* collected in the Sénart forest, and also in ticks collected in Normandy, another region of North-west France. This strain was introduced in the databank under the number HG529222.1.

B. burgdorferi ss strains isolated belong to the three groups (A, B and C) previously identified: *B. burgdorferi* ss genotype A26 (AF497979.1) (*I. ricinus*, Czech Republic) [35], *B. burgdorferi* ss B31 (AF0900984.1) [36], and *B. burgdorferi* NE49 (AF090984.1) [37] (S5 Fig). Interestingly, group B contains two *B. burgdorferi* ss isolates from human cerebrospinal fluid (CSF): AF090977.1 [37] and KY594010, which were found identical to tick sequences of Sénart.

Sequences of *B. garinii* were clustered in five groups (A, B, C, D and E), all corresponding to sequences isolated in *Ixodes* ticks except those of group A. Sequences of group A were identical to PBi, a *B. bavariensis* sequence type (FJ686175.1) [38] that was identified in chipmunks and ticks as well as in human skin in China [39]. Group B contains sequences isolated from *Tamias sibiricus* of Sénart and was also identified in *Ixodes ricinus* ticks of Finland (JX909896.1) [40] and Germany (Z77176.1). Group C corresponds to the *B. garinii* sequence type IPT114 (JF331109) [41]. Group D contains *B. garinii* sequences identical to JF331101.1 isolated in *Ixodes uriae* in Russia [41] while Group E contains sequences identical to the *B. garinii* sequence type 20047 (L30119) (Fig 9, S6 Fig) [30].

Sequences of *B. lusitaniae* are grouped in two clusters. Sequences of group A are grouped in a cluster with strains isolated in Turkey and Italy (AB091802.1) (S7 Fig, Fig 9) [42]. In 2008 and 2011, a new strain was identified (HG798781.1), forming a new cluster of sequences. Group A and B are in a different cluster to the PotiB1, B2 and B3 type strains.

Sequences of *B. valaisiana* were grouped in three clusters (S8 Fig). Group A contains sequences identical to L30134 [30], group B contains sequences identical to DQ393310.1 [43] and group C is identical to AB091795.1 isolated from *I. ricinus* in Turkey [42].

Concerning *B. spielmanii* sequences, none was found identical to *B. spielmanii* DQ133 526.1 [31]. Those found were either *B. spielmanii* A14S from Denmark or *B. spielmanii* DQ286234.1. (S9 Fig) [31].

Analysis of *B. afzelii* sequences identified in Siberian chipmunks showed that they were clustered in four groups (A, B, D, E). We did not find any sequence identical to the PKO strain [44] or sequences matching the group C defined for tick sequences. *B. burgdorferi* ss strains isolated from *Tamias sibiricus* belonged to Group A and B whereas sequences identical to *B. bavariensis* PBi were also identified (S10 Fig).

Table 7. Polymorphism of *Borrelia burgdorferi* sensu lato from *MseI* restriction profiles.

<i>Borrelia</i> species	restriction profile of <i>MseI</i> (bp)	Group	Sénart 2008		Sénart 2009		Sénart 2009		Notre-Dame 2009		Rambouillet 2009		Chipmunk 2008		Total	
			number	sequence number	number	sequence number	number	sequence number	number	sequence number	number	sequence number	number	sequence number	number	sequence number
<i>B. afzelii</i> (n = 274)	107, 68, 51, 20	A (AB178338.1)	14	14	3	3	1	1					6	6	24	24
	107, 68, 51, 20	B (VS461 ^T) (L30135.1)	18	4	83		27		14		26		7	2	175	6
	107, 68, 51, 20	C (AB178149.1)	2	2											2	2
	107, 68, 51, 13, 7	D (HM173577.1)	3	3	10	10	3	3			2	2	6	6	24	24
	107, 51, 38, 30, 20	E (HG529222.1)	22	22	20	6	6	5					1	1	49	34
<i>B. burgdorferi</i> ss (n = 261)	107, 52, 40, 29, 28	A (AF497979.1)	29	4	25	3	15	1	7	1	8		11	5	97	14
	107, 52, 38, 29, 28	B31 ^T group B (AF090977.1)	33		50	1	34	3	7		26		13		161	4
	107, 53, 38, 29, 26	C (NE49) (AF090984.1)			2	2					1	1			3	3
	107, 95, 51	A (FJ686175.1 strain <i>Mp-Tw1</i>)			1	1							1	1	2	2
	107, 95, 51	B (JX909896 <i>Ala-228</i>)											2	2	2	2
<i>B. lusitanae</i> (n = 21)	107, 95, 51	C (JF331109.1 IPT 114)			1	1									1	1
	107, 95, 51	D (JF331101.1 T2645)					1	1							1	1
	107, 95, 51	E type 20047 ^T (L30119.1)	48		35		38	1	8		60				189	1
	107, 81, 39, 29	A (TR213) (AB091802.1)	6	6	1	1	12	11							19	18
	107, 81, 39, 29	B (HG798781.1 isolate: 11SS112)	1	1			1	1							2	2
<i>B. spielmanii</i> (n = 19)	107, 99	PC-EQ17NS ^T (DQ133526.1))														
	107, 65, 51	A (A14S) (AM055828.1)	3	3	2	1	6	6	1	1					12	11
	107, 67, 48	B (DQ286234.1)	1	1	2	2	4	4							7	7
	174, 51, 23, 7	A VS116 ^T (L30134.1)	28	1	16	1	21		4		24				93	2
	204, 51	B (DQ393310.1)	1	1	1	1	1	1			1				4	2
<i>B. afzelii</i> + <i>B. burgdorferi</i> ss	174, 51, 14, 7	C (AB091795.1)	2	1			1	1	2	2	1	1			6	4
			3		8		4		2		4		1		22	
			1				1						3		5	
															1	1

(Continued)

Table 7. (Continued)

Borrelia species	restriction profile of MseI (bp)	Group	Sénart 2008		Sénart 2009		Sénart 2009		Notre-Dame 2009		Rambouillet 2009		Chipmunk 2008		Total	
			number	sequence number	number	sequence number	number	sequence number	number	sequence number	number	sequence number	number	sequence number	number	sequence number
<i>B. afzelii</i> <i>atyp1</i> + <i>B. burgdorferi</i> ss					2		1								3	
<i>B. afzelii</i> + <i>B. valaisiana</i>						1	1								1	
<i>B. garinii</i> + <i>B. valaisiana</i>			1		3	1	1				5				10	
<i>B. garinii</i> + <i>B. burgdorferi</i> ssCA19					1										1	
<i>B. garinii</i> + <i>B. burgdorferi</i> ss					1										1	
<i>B. burgdorferi</i> ss+B. <i>burgdorferi</i> ssCA19			1												1	

<https://doi.org/10.1371/journal.pone.0183543.t007>

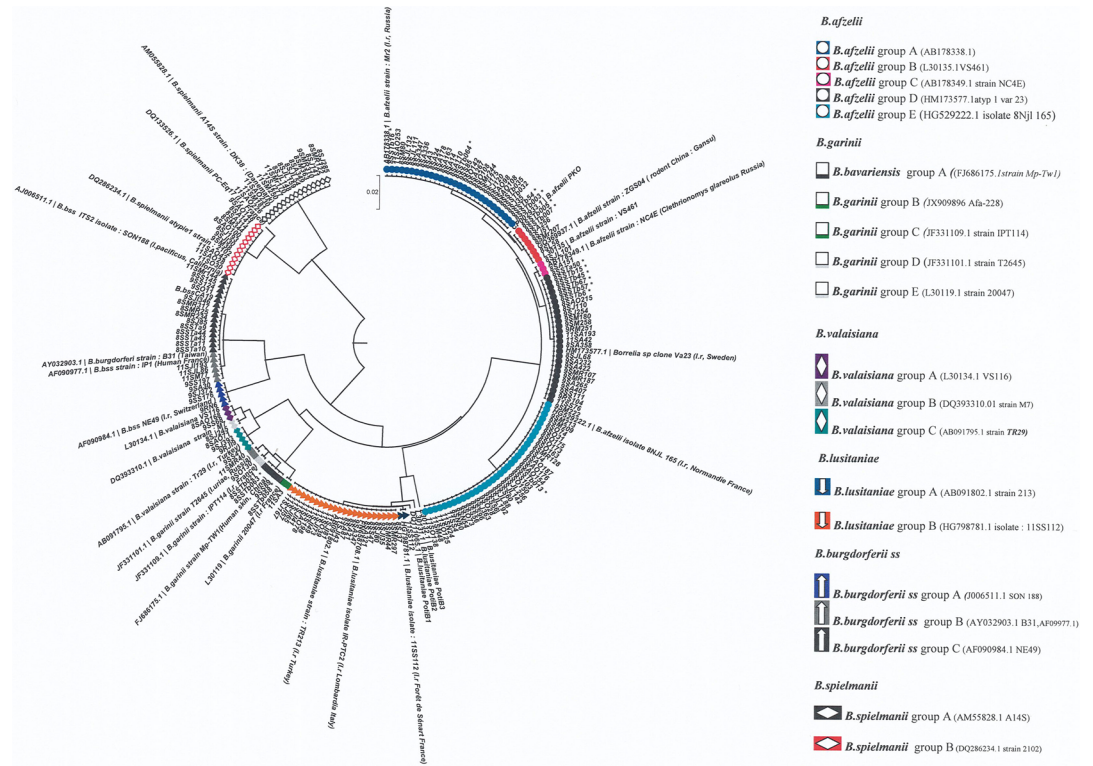


Fig 9. Phylogenetic tree drawn from the sequences of the amplification products from the rrf-rrl space from ticks and chipmunks (T) collected in 2008, 2009 and 2011. The software used for drawing the tree was MEGA 5 (UPGMA method).

<https://doi.org/10.1371/journal.pone.0183543.g009>

Discussion

Lyme disease is a zoonotic disease that poses an important public health problem in urbanized areas where increasingly large numbers of people attend urban forests and park settings. Understanding parameters of human risk of exposure to Lyme disease is critical to target prevention, control, and surveillance actions. In this purpose, the present study was undertaken to examine the spatial and temporal dynamics of *I. ricinus* in three peri-urban forests of the Île-de-France region and to establish their relationship to *Borrelia* infection rates of ticks collected at selected study sites. Indeed, although the ecology of Lyme borreliosis is reasonably well understood, the factors that determine the observed large variations in tick density, infection rates, and other determinants for Lyme borreliosis are not.

The Sénart forest is a 3200 ha suburban forest 22 km southeast of Paris, France. This forest was especially studied to determine the effect of the introduction of a new host species on vector dynamics. This rodent, whose original distribution range extends from eastern Finland to the Bering Strait and East Asia, has quickly adapted to its new environment in Europe. One of the largest populations is located in the Sénart forest and accounts for between 10,000 and 20,000 individuals. There is field evidence that *T. sibiricus* can be infected by *Borrelia* sp. including both *B. burgdorferi* ss and *B. afzelii* [45–50]. Moreover, Siberian chipmunks are suspected to contribute to Lyme borreliosis risk, as they host higher numbers ticks and are more often infected by diverse *Borrelia* genospecies than the native rodent reservoir species. However, recent studies have shown that although they are infected with *Borrelia* species, they do not seem to be persistently infected [51].

Considering these various results, we decided to investigate their putative influence on the density of ticks, on their infection rate and their density of infection overtime. Ticks were collected on eight plots in the forest of Sénart. Five plots were in the area colonized by Siberian chipmunks (between 2 and 5 individuals per ha) (western part of the forest), one located in an intermediate area recently colonized where few animals are settled (north-east) and 2 in the south-east, an area without chipmunk. In order to detect a spatial variation, 8 and 2 plots were also collected respectively in the forests of Rambouillet and Notre-Dame, two forests that are considered "without chipmunk." The study was performed during several months over three years to detect seasonal, temporal and spatial variations.

Spatio-temporal and seasonal variations in tick abundance and infection

There was a seasonal variation in questing nymph abundance, with high densities in spring and summer in the Sénart forest in the three years of collect. Similar seasonal patterns were observed in the Notre-Dame and Rambouillet forests. Considerable monthly variations in *I. ricinus* density were also reported in two other French departments: Meuse and the Puy-de-Dôme [7]. The reasons for such differences are probably explained by diverse competing environmental factors: mainly climatic conditions [52], vegetation type, and the abundance of wild hosts [53]. Such a distribution has been previously observed in British woodland [54].

Temporal variations were also studied in the Sénart forest. In terms of the density of nymphs and adult ticks, no difference was recorded between the three years of collection. In contrast, the rate of infection of nymphs was higher in 2009 than in 2008 and 2011. Ostfeld et al. [12] conclude that interannual variation in entomological risk of exposure to Lyme disease is correlated positively with prior abundance of key hosts for the immature stages of tick vectors. Captures of rodents were performed in 2006, 2007 and 2008 in the Sénart forest. They show that the number of rodent captured was higher in 2008 than during the preceding years. This information can explain the higher rate of infection and density of infected nymphs in 2009. The density of infected adults remained similar during the three years of study whereas that of nymphs was higher in 2009.

Spatial variations were also studied between the different forests studied. The density of questing nymphs and adults was similar. The rate of infection of nymphs was higher in Sénart compared to Rambouillet. In agreement, the density of infected nymphs was higher in Sénart compared to Rambouillet (respectively 12 per 100 m² and 5 per/100 m²). These results are similar to the densities of infected ticks observed in 2 other departments of France: Meuse and the Puy-de-Dôme, but inferior to that found in Alsace [6, 7].

Prevalence of *Borrelia* species in the three forests

A high diversity of species was found in the three forests since six genospecies of *B. burgdorferi* sl were present in the collected *I. ricinus* ticks. Several cases of co-infections were identified. The most frequent associated *B. burgdorferi* ss and *B. afzelii* on one hand and *B. garinii* and *B. valaisiana* on the other hand. This observation is in good correlation with the reservoirs that are shared between these genospecies. Hence, *B. garinii* and *B. valaisiana* are more often associated with birds [15, 55, 56], whereas small rodents are reservoir hosts for *B. afzelii* and *B. burgdorferi* ss [16, 57–59]. *B. burgdorferi* ss is found in both rodents and birds. We also found *B. lusitaniae*, a species rarely found in Northern Europe. *B. lusitaniae* is mainly driven by lizards [60] and birds [61]. They were mostly identified in ticks collected in the SE3 plot emphasizing the observation that this strain is focally distributed in central and Eastern Europe.

It is interesting that most *B. lusitaniae* found in Sénart were 100% identical with strains found in Italy and in Turkey [34]. It is possible that this *Borrelia* species, rare in northern

Europe, was disseminated by the same migratory birds. Indeed, among the bird species on which infected ticks by *B.lusitaniae* were found, we distinguish *Turdus philomelos* [61]. This bird migrates from the Nordic countries to France in the summer and overwinters in Turkey and North Africa [62]. The role of this bird in the dispersal of *B. lusitaniae* has been highly suspected. A new variant of *B. lusitaniae* was identified in our study.

We observed geographical differences in the various *Borrelia* species prevalences in the various forests. The prevalence of *B. afzelii* was low in the nymphs of the Rambouillet forest whereas that of *B. garinii* was high. Also, the frequency of *B. valaisiana* was higher in Rambouillet than in the other forests. These local disparities may be related to factors such as the presence/density of reservoir hosts, forest structure, and types of biotope. Indeed, variation in animal host species composition is an important factor in determining tick-associated bacterial communities [14]. Our results suggest that the reservoir host composition of Rambouillet may be unique and may contain a high diversity in the bird community. *Borrelia* genospecies prevalence found in Rambouillet was similar to the *Borrelia* diversity identified in ticks captured in Germany where *B. garinii* was the most frequently detected species [63]. It is well-known that the prevalence of *B. garinii* increases from Western to Eastern Europe [64] and this gradient may explain the observations made in Germany. However, our results differ from those found in the Netherlands, Denmark and Belarus [65–67], where *B. afzelii* was predominant among *B. burgdorferi* s.l. species. Since *B. garinii* is associated with neuroborreliosis [68], our findings may suggest a higher risk to develop this form of Lyme borreliosis after a tick bite in Rambouillet. However, we found *B. burgdorferi* ss rrf-rrl spacer sequences that were identical to those found in human CSF collected in France emphasising on the role this genospecies plays in neurological symptoms associated to Lyme disease.

We also found a temporal variation during the three years of collect in the prevalence of the *B. afzelii* both in nymph and adults of *I. ricinus* ticks in the Sénart forest, which was higher in 2009 compared to the other years. *B. afzelii* is mostly associated with rodents and the population of these animals was shown to vary according to the year.

Role of *Tamias sibiricus* in the Sénart forest

The Sénart forest is the only one among the three forests where Siberian chipmunks were introduced. Recent work in this forest showed a rate of parasitism by *Ixodes ricinus* and infection rates by *B. burgdorferi* ss, *B. afzelii* and *B. garinii* greater in chipmunks than in other indigenous rodent species tested, namely the bank vole and the wood mouse [49, 69]. In the present study, the presence of chipmunks was shown to be correlated to both the density and the rate of infection of both nymphs and adults. A higher density of nymphs and adults was observed in NC plots (south-eastern part of the forest), and conversely a higher rate of infection of nymphs was obtained in C plots (western part of the forest) in 2008, 2009 and 2011. Interestingly, the plot being colonized recently (north-eastern part of the forest) has both a rate of infection of nymph and density of infected nymph and adult similar to non-colonized plots whereas the density of adult is intermediate between colonized and non-colonized plots. The density of infected nymphs is known to characterize the acarological risk. We observe only in 2011 a higher density of infected nymphs in the south-eastern part of the forest, as shown by Vourc'h et al. during one month of the same year [70], whereas no difference was reported in 2008 and 2009, showing the variation of this important parameter over year in this particular forest.

Factors that may influence tick density and infection

Tree species. Vegetation plays an important role in the tick life-cycle. Diuk-Wasser et al. [71] reported that the abundance of *I. scapularis* appeared associated with specific sites, having

different host abundances. In Europe, Jouda et al. [72] reported similar associations between sites and ticks. In particular, thickness of litter layer and cover of the moss layer were positively correlated with tick density. Vourc'h et al. [70] found a positive correlation between deciduous trees (mainly oaks) and the density of nymphs in the Sénart forest in May 2011. Interestingly, our results show that only the number of chestnut trees correlated positively with nymph and adult density in 2008 and 2011 consistent with the results of Ceballos et al., [73]. Chestnut trees are valued for their leaves, flowers and mainly for fruit by wild boars, roe deer and rodents. Therefore, its presence increases the food supplies in plots that are rich in chestnut trees. We can put forward the hypothesis that the chestnuts presence attracts these mammals, which will spend more time in this vegetation. In addition to food, chestnut stump sprouts provide denser undergrowth (as coppiced wood) than other species (except hornbeam or common hazel). This offers a better shelter in the day towards walkers than the undergrowth of dominant oaks. Ticks at the end of a blood meal on these hosts will then have a greater probability of falling below the fruit trees, which could explain their high density in these plots. Interestingly, other studies have demonstrated a link between the tick density and the nature of vegetation [74].

Host composition. Moreover, apart from habitat characteristics, host composition and abundance may affect tick population [75–77]. In a number of tick-pathogen systems, certain tick hosts do not support the multiplication of the pathogen. Incompetent hosts may play a crucial role in determining the infection prevalence in the vectors [78]. It has been proposed for natural communities that the abundance of inefficient hosts for the transmission of the pathogen to a feeding vector could act as a diluting factor in the dynamics of pathogen transmission, thereby reducing the exposure rate in competent hosts. In the case of Lyme disease, deer are refractory to infection but feed a large number of ticks. Our results therefore suggest that the abundance of roe deer may be higher in plots of the south-eastern part (NC plots) than in those of the western part (C plots), and that their presence may be related to particular habitat characteristics of this part of the Sénart forest. In correlation with our results, the ONF showed in 2008 that the population of roe deer and wild boars were higher in the NC plots than in C plots. Conversely, the high rate of infection in C plots may be explained by the presence of a higher abundance of reservoir hosts, among which chipmunks that are particularly susceptible to infection by *Borrelia burgdorferi* sl.

Conclusions

In conclusion, our study provides interesting insights concerning the spatio-temporal distribution as well as the infection of ticks collected in peri-urban forests, which are important sites of recreation for people. We observed that the density of nymphs and adults was stable overtime in the Sénart forest but some parameters like the infected nymph density may vary according to the year of tick collection. Concerning the putative role that *Tamias sibiricus* may play in the transmission of *Borrelia* in the Sénart forest, our results suggest that this newly introduced species may be involved in the rate of infection of ticks by *Borrelia* genospecies and if its population increases, it could play a significant role in *Borrelia* transmission. The acarological risk in the sampled plots located respectively in western and eastern parts of the Sénart forest, was found however similar in 2008 and 2009, and higher to that recorded in other forests of the same region. We think that it is important not to draw attention to any particular part of the Sénart forest or to any particular forest for prevention and control measures against *Borrelia burgdorferi* sl transmission but rather to inform people that a risk exists in any forest. However, we must stress that the risk identified in peri-urban forests of Île-de-France is inferior to what was found in Alsace where the rate of infestation of ticks by *Borrelia* and the density of infected nymphs were significantly higher [6].

Supporting information

S1 Table. Localization and description of the various plots where ticks were collected.
(DOC)

S2 Table. Density, infection rate and density of infected ticks of *I. ricinus* in the forest of Sénart in 2008, 2009 and 2011 on eight plots.
(DOC)

S3 Table. Correlations across active variables used for principal component analysis of the Sénart forest.
(DOC)

S4 Table. Density and infection status of ticks *I. ricinus* in the Notre-Dame, Rambouillet and Sénart forest in 2009.
(DOC)

S5 Table. Density and infection status of ticks *I. ricinus* in α , β and γ plots of the forest of Sénart in 2008, 2009 and 2011.
(DOC)

S6 Table. Prevalence of *Borrelia* species identified in NC and C plots of Sénart forest.
(DOCX)

S7 Table. Prevalence of *Borrelia* species in adult collected in 2008, 2009 and 2011 in α , β and γ plots of the Sénart forest.
(DOC)

S1 Fig. Scatter plot of observations in the factorial map according to the year of the experiment. The dots are colored according year of the experiment.
(TIF)

S2 Fig. Scatter plot of observations in the factorial map according to the month of the experiment. The dots are colored according to the month of the experiment.
(TIF)

S3 Fig. Scatter plot of observations in the factorial map according to chipmunk abundance. The dots are colored according to chipmunk abundance.
(TIF)

S4 Fig. Phylogenetic tree obtained from the DNA sequences of the rrf-rrl amplicons of *B. afzelii*. The software used for drawing the tree was MEGA 5 (UPGMA method).
(DOC)

S5 Fig. Phylogenetic tree obtained from the DNA sequences of the rrf-rrl amplicons of *B. burgdorferi* ss. The software used for drawing the tree was MEGA 5 (UPGMA method).
(DOC)

S6 Fig. Phylogenetic tree obtained from the DNA sequences of the rrf-rrl amplicons of *B. garinii* and *B. bavariensis*. The software used for drawing the tree was MEGA 5 (UPGMA method).
(DOC)

S7 Fig. Phylogenetic tree obtained from the DNA sequences of the rrf-rrl amplicons of *B. lusitaniae*. The software used for drawing the tree was MEGA 5 (UPGMA method).
(DOC)

S8 Fig. Phylogenetic tree obtained from the DNA sequences of the rrf-rrl amplicons of *B. valaisiana*. The software used for drawing the tree was MEGA 5 (UPGMA method).
(DOC)

S9 Fig. Phylogenetic tree obtained from the DNA sequences of the rrf-rrl amplicons of *B. spielmanii*. The software used for drawing the tree was MEGA 5 (UPGMA method).
(DOC)

S10 Fig. Phylogenetic tree obtained from the DNA sequences of the rrf-rrl amplicons of *Borrelia* genospecies in *Tamias sibiricus*. The software used for drawing the tree was MEGA 5 (UPGMA method).
(DOC)

Acknowledgments

We thank Office National des Forêts for granting us free access to the Sénart, Notre-Dame and Rambouillet forests.

We would like to thank Sylvain Ducroux and Léo Castex (ONF) for the loan of the development data on the Sénart forest.

We thank Dr J.L. Chapuis (MNHN, Paris, France) for his help for tick and chipmunk collection in 2008 and 2009.

Author Contributions

Conceptualization: Vincent Godard, Elisabeth Ferquel, Valerie Choumet.

Data curation: Emeline Perthame, Vincent Godard, Elisabeth Ferquel.

Formal analysis: Emeline Perthame, Elisabeth Ferquel.

Funding acquisition: Vincent Godard, Elisabeth Ferquel, Valerie Choumet.

Investigation: Axelle Marchant, Alain Le Coupance, Claire Joly, Natacha Sertour, Martine Garnier, Elisabeth Ferquel.

Methodology: Emeline Perthame, Vincent Godard, Elisabeth Ferquel, Valerie Choumet.

Project administration: Vincent Godard, Elisabeth Ferquel, Valerie Choumet.

Resources: Vincent Godard, Elisabeth Ferquel, Valerie Choumet.

Software: Emeline Perthame, Elisabeth Ferquel.

Supervision: Vincent Godard, Elisabeth Ferquel, Valerie Choumet.

Validation: Natacha Sertour, Martine Garnier, Elisabeth Ferquel.

Visualization: Elisabeth Ferquel, Valerie Choumet.

Writing – original draft: Axelle Marchant, Vincent Godard, Elisabeth Ferquel, Valerie Choumet.

Writing – review & editing: Axelle Marchant, Emeline Perthame, Vincent Godard, Elisabeth Ferquel, Valerie Choumet.

References

1. Rudenko N, Golovchenko M, Grubhoffer L, Oliver JH Jr. Updates on *Borrelia burgdorferi* sensu lato complex with respect to public health. Ticks Tick Borne Dis. 2011; 2(3):123–8. <https://doi.org/10.1016/j.ttbdis.2011.04.002> PMID: 21890064

2. Stanek G, Reiter M. The expanding Lyme *Borrelia* complex—clinical significance of genomic species? *Clin Microbiol Infect*. 2011; 17(4):487–93. <https://doi.org/10.1111/j.1469-0691.2011.03492.x> PMID: [21414082](https://pubmed.ncbi.nlm.nih.gov/21414082/)
3. Rijpkema SG, Tazelaar DJ, Molkenboer MJ, Noordhoek GT, Plantinga G, Schouls LM, et al. Detection of *Borrelia afzelii*, *Borrelia burgdorferi* sensu stricto, *Borrelia garinii* and group VS116 by PCR in skin biopsies of patients with erythema migrans and acrodermatitis chronica atrophicans. *Clin Microbiol Infect*. 1997; 3(1):109–16. PMID: [11864084](https://pubmed.ncbi.nlm.nih.gov/11864084/)
4. Collares-Pereira M, Couceiro S, Franca I, Kurtenbach K, Schafer SM, Vitorino L, et al. First isolation of *Borrelia lusitaniae* from a human patient. *J Clin Microbiol*. 2004; 42(3):1316–8. <https://doi.org/10.1128/JCM.42.3.1316-1318.2004> PMID: [15004107](https://pubmed.ncbi.nlm.nih.gov/15004107/)
5. Vandenesch A, Turbelin C, Couturier E, Arena C, Jaulhac B, Ferquel E, et al. Incidence and hospitalisation rates of Lyme borreliosis, France, 2004 to 2012. *Euro Surveill*. 2014; 19(34).
6. Ferquel E, Garnier M, Marie J, Bernede-Bauduin C, Baranton G, Perez-Eid C, et al. Prevalence of *Borrelia burgdorferi* sensu lato and *Anaplasmataceae* members in *Ixodes ricinus* ticks in Alsace, a focus of Lyme borreliosis endemicity in France. *Appl Environ Microbiol*. 2006; 72(4):3074–8. <https://doi.org/10.1128/AEM.72.4.3074-3078.2006> PMID: [16598024](https://pubmed.ncbi.nlm.nih.gov/16598024/)
7. Beytout J, George JC, Malaval J, Garnier M, Beytout M, Baranton G, et al. Lyme borreliosis incidence in two French departments: correlation with infection of *Ixodes ricinus* ticks by *Borrelia burgdorferi* sensu lato. *Vector Borne Zoonotic Dis*. 2007; 7(4):507–17. <https://doi.org/10.1089/vbz.2006.0633> PMID: [17979533](https://pubmed.ncbi.nlm.nih.gov/17979533/)
8. Perret JL, Rais O, Gern L. Influence of climate on the proportion of *Ixodes ricinus* nymphs and adults questing in a tick population. *J Med Entomol*. 2004; 41(3):361–5. PMID: [15185936](https://pubmed.ncbi.nlm.nih.gov/15185936/)
9. Fish D, Daniels TJ. The role of medium-sized mammals as reservoirs of *Borrelia burgdorferi* in southern New York. *J Wildl Dis*. 1990; 26(3):339–45. <https://doi.org/10.7589/0090-3558-26.3.339> PMID: [2388356](https://pubmed.ncbi.nlm.nih.gov/2388356/)
10. Kurtenbach K, Dizij A, Seitz HM, Margos G, Moter SE, Kramer MD, et al. Differential immune responses to *Borrelia burgdorferi* in European wild rodent species influence spirochete transmission to *Ixodes ricinus* L. (Acari: Ixodidae). *Infect Immun*. 1994; 62(12):5344–52. PMID: [7960113](https://pubmed.ncbi.nlm.nih.gov/7960113/)
11. Kurtenbach K, De Michelis S, Etti S, Schafer SM, Sewell HS, Brade V, et al. Host association of *Borrelia burgdorferi* sensu lato—the key role of host complement. *Trends Microbiol*. 2002; 10(2):74–9. PMID: [11827808](https://pubmed.ncbi.nlm.nih.gov/11827808/)
12. Ostfeld RS, Canham CD, Oggenfuss K, Winchcombe RJ, Keesing F. Climate, deer, rodents, and acorns as determinants of variation in lyme-disease risk. *PLoS Biol*. 2006; 4(6):e145. <https://doi.org/10.1371/journal.pbio.0040145> PMID: [16669698](https://pubmed.ncbi.nlm.nih.gov/16669698/)
13. Olsen B, Jaenson TG, Bergstrom S. Prevalence of *Borrelia burgdorferi* sensu lato-infected ticks on migrating birds. *Appl Environ Microbiol*. 1995; 61(8):3082–7. PMID: [7487041](https://pubmed.ncbi.nlm.nih.gov/7487041/)
14. Kurtenbach K, Peacey M, Rijpkema SG, Hoodless AN, Nuttall PA, Randolph SE. Differential transmission of the genospecies of *Borrelia burgdorferi* sensu lato by game birds and small rodents in England. *Appl Environ Microbiol*. 1998; 64(4):1169–74. PMID: [9546150](https://pubmed.ncbi.nlm.nih.gov/9546150/)
15. Hanincova K, Taragelova V, Koci J, Schafer SM, Hails R, Ullmann AJ, et al. Association of *Borrelia garinii* and *B. valaisiana* with songbirds in Slovakia. *Appl Environ Microbiol*. 2003; 69(5):2825–30. <https://doi.org/10.1128/AEM.69.5.2825-2830.2003> PMID: [12732554](https://pubmed.ncbi.nlm.nih.gov/12732554/)
16. Hanincova K, Schafer SM, Etti S, Sewell HS, Taragelova V, Ziak D, et al. Association of *Borrelia afzelii* with rodents in Europe. *Parasitology*. 2003; 126(Pt 1):11–20. PMID: [12613759](https://pubmed.ncbi.nlm.nih.gov/12613759/)
17. Comstedt P, Bergstrom S, Olsen B, Garpmo U, Marjavaara L, Mejlou H, et al. Migratory passerine birds as reservoirs of Lyme borreliosis in Europe. *Emerg Infect Dis*. 2006; 12(7):1087–95. <https://doi.org/10.3201/eid1207.060127> PMID: [16836825](https://pubmed.ncbi.nlm.nih.gov/16836825/)
18. Kurtenbach K, Sewell HS, Ogden NH, Randolph SE, Nuttall PA. Serum complement sensitivity as a key factor in Lyme disease ecology. *Infect Immun*. 1998; 66(3):1248–51. PMID: [9488421](https://pubmed.ncbi.nlm.nih.gov/9488421/)
19. Ullmann AJ, Lane RS, Kurtenbach K, Miller M, Schriefer ME, Zeldner N, et al. Bacteriolytic activity of selected vertebrate sera for *Borrelia burgdorferi* sensu stricto and *Borrelia bissettii*. *J Parasitol*. 2003; 89(6):1256–7. <https://doi.org/10.1645/Ge-3081RN> PMID: [14740924](https://pubmed.ncbi.nlm.nih.gov/14740924/)
20. Maresca B. La fréquentation des forêts publiques en ile de france caracteristiques des sorties et flux de visites desfranciliens. 2000.
21. Chapuis J. Répartition en France d'un animal de compagnie naturalisé, le tamia de Sibérie (*Tamias sibiricus*). *Rev Ecol (Terre Vie)*. 2005; 60:239–53.
22. Vassalo M, Paul RE, Perez-Eid C. Temporal distribution of the annual nymphal stock of *Ixodes ricinus* ticks. *Exp Appl Acarol*. 2000; 24(12):941–9. PMID: [11354621](https://pubmed.ncbi.nlm.nih.gov/11354621/)

23. Richter D, Debski A, Hubalek Z, Matuschka FR. Absence of Lyme disease spirochetes in larval *Ixodes ricinus* ticks. *Vector Borne Zoonotic Dis.* 2012; 12(1):21–7. <https://doi.org/10.1089/vbz.2011.0668> PMID: 21923267
24. Abdi H, Williams LJ. Principal component analysis. *WIREs Comp Stat.* 2010; 2:433–59. <https://doi.org/10.1002/wics.101>
25. Cattell RB. The Scree Test For The Number Of Factors. *Multivariate Behav Res.* 1966; 1(2):245–76. https://doi.org/10.1207/s15327906mbr0102_10 PMID: 26828106
26. Marconi RT, Lubke L, Hauglum W, Garon CF. Species-specific identification of and distinction between *Borrelia burgdorferi* genomic groups by using 16S rRNA-directed oligonucleotide probes. *J Clin Microbiol.* 1992; 30(3):628–32. PMID: 1372620
27. Le Fleche A, Postic D, Girardet K, Peter O, Baranton G. Characterization of *Borrelia lusitaniae* sp. nov. by 16S ribosomal DNA sequence analysis. *Int J Syst Bacteriol.* 1997; 47(4):921–5. <https://doi.org/10.1099/00207713-47-4-921> PMID: 9336887
28. Wang G, van Dam AP, Schwartz I, Dankert J. Molecular typing of *Borrelia burgdorferi* sensu lato: taxonomic, epidemiological, and clinical implications. *Clin Microbiol Rev.* 1999; 12(4):633–53. PMID: 10515907
29. Postic C, Leturque A, Printz RL, Maulard P, Loizeau M, Granner DK, et al. Development and regulation of glucose transporter and hexokinase expression in rat. *Am J Physiol.* 1994; 266(4 Pt 1):E548–59. PMID: 8178975
30. Postic D, Assous MV, Grimont PA, Baranton G. Diversity of *Borrelia burgdorferi* sensu lato evidenced by restriction fragment length polymorphism of rrf (5S)-rrl (23S) intergenic spacer amplicons. *Int J Syst Bacteriol.* 1994; 44(4):743–52. <https://doi.org/10.1099/00207713-44-4-743> PMID: 7981102
31. Richter D, Postic D, Sertour N, Livey I, Matuschka FR, Baranton G. Delineation of *Borrelia burgdorferi* sensu lato species by multilocus sequence analysis and confirmation of the delineation of *Borrelia spielmanii* sp. nov. *Int J Syst Evol Microbiol.* 2006; 56(Pt 4):873–81. <https://doi.org/10.1099/ijs.0.64050-0> PMID: 16585709
32. Masuzawa T, Kharitonov IG, Kadosaka T, Hashimoto N, Kudiken M, Takada N, et al. Characterization of *Borrelia burgdorferi* sensu lato isolated in Moscow province—a sympatric region for *Ixodes ricinus* and *Ixodes persulcatus*. *Int J Med Microbiol.* 2005; 294(7):455–64. <https://doi.org/10.1016/j.ijmm.2004.09.008> PMID: 15715174
33. Zhang F, Gong Z, Zhang J, Liu Z. Prevalence of *Borrelia burgdorferi* sensu lato in rodents from Gansu, northwestern China. *BMC Microbiol.* 2010; 10:157. <https://doi.org/10.1186/1471-2180-10-157> PMID: 20509909
34. Wilhelmsson P, Fryland L, Borjesson S, Nordgren J, Bergstrom S, Ernerudh J, et al. Prevalence and diversity of *Borrelia* species in ticks that have bitten humans in Sweden. *J Clin Microbiol.* 2010; 48(11):4169–76. <https://doi.org/10.1128/JCM.01061-10> PMID: 20844223
35. Derdakova M, Beati L, Pet'ko B, Stanko M, Fish D. Genetic variability within *Borrelia burgdorferi* sensu lato genospecies established by PCR-single-strand conformation polymorphism analysis of the rrfA-rrlB intergenic spacer in *Ixodes ricinus* ticks from the Czech Republic. *Appl Environ Microbiol.* 2003; 69(1):509–16. <https://doi.org/10.1128/AEM.69.1.509-516.2003> PMID: 12514035
36. Chao LL, Shih CM. Molecular characterization of Lyme disease spirochetes (*Borrelia burgdorferi* sensu lato) isolated in Taiwan by restriction fragment length polymorphism analysis of 5S(rrf)-23S(rrl) intergenic spacer amplicons. *Am J Trop Med Hyg.* 2002; 67(5):504–10. PMID: 12479552
37. Postic D, Ras NM, Lane RS, Humair P, Wittenbrink MM, Baranton G. Common ancestry of *Borrelia burgdorferi* sensu lato strains from North America and Europe. *J Clin Microbiol.* 1999; 37(9):3010–2. PMID: 10449492
38. Margos G, Vollmer SA, Cornet M, Garnier M, Fingerle V, Wilske B, et al. A new *Borrelia* species defined by multilocus sequence analysis of housekeeping genes. *Appl Environ Microbiol.* 2009; 75(16):5410–6. <https://doi.org/10.1128/AEM.00116-09> PMID: 19542332
39. Chao LL, Chen YJ, Shih CM. First detection and molecular identification of *Borrelia garinii* isolated from human skin in Taiwan. *J Med Microbiol.* 2010; 59(Pt 2):254–7. <https://doi.org/10.1099/jmm.0.016626-0> PMID: 19910482
40. Wilhelmsson P, Lindblom P, Fryland L, Ernerudh J, Forsberg P, Lindgren PE. Prevalence, diversity, and load of *Borrelia* species in ticks that have fed on humans in regions of Sweden and Aland Islands, Finland with different Lyme borreliosis incidences. *PLoS One.* 2013; 8(11):e81433. <https://doi.org/10.1371/journal.pone.0081433> PMID: 24278437
41. Gomez-Diaz E, Boulinier T, Sertour N, Cornet M, Ferquel E, McCoy KD. Genetic structure of marine *Borrelia garinii* and population admixture with the terrestrial cycle of Lyme borreliosis. *Environ Microbiol.* 2011; 13(9):2453–67. <https://doi.org/10.1111/j.1462-2920.2011.02515.x> PMID: 21651685

42. Guner ES, Hashimoto N, Takada N, Kaneda K, Imai Y, Masuzawa T. First isolation and characterization of *Borrelia burgdorferi* sensu lato strains from *Ixodes ricinus* ticks in Turkey. *J Med Microbiol*. 2003; 52 (Pt 9):807–13. <https://doi.org/10.1099/jmm.0.05205-0> PMID: 12909659
43. Postic D, Garnier M, Baranton G. Multilocus sequence analysis of atypical *Borrelia burgdorferi* sensu lato isolates—description of *Borrelia californiensis* sp. nov., and genomospecies 1 and 2. *Int J Med Microbiol*. 2007; 297(4):263–71. <https://doi.org/10.1016/j.ijmm.2007.01.006> PMID: 17374507
44. Casjens SR, Mongodin EF, Qiu WG, Dunn JJ, Luft BJ, Fraser-Liggett CM, et al. Whole-genome sequences of two *Borrelia afzelii* and two *Borrelia garinii* Lyme disease agent isolates. *J Bacteriol*. 2011; 193(24):6995–6. <https://doi.org/10.1128/JB.05951-11> PMID: 22123755
45. Chu CY, He J, Wang JB, Hasen GW, Zhang PH, Wu XM, et al. [Investigation on *Borrelia burgdorferi* sensu lato in ticks and rodents collected in Da Xing-An Mountains Forest areas of China]. *Zhonghua Liu Xing Bing Xue Za Zhi*. 2006; 27(8):681–4. PMID: 17172108
46. Pisanu B, Chapuis JL, Dozieres A, Basset F, Poux V, Vourc'h G. High prevalence of *Borrelia burgdorferi* s.l. in the European red squirrel *Sciurus vulgaris* in France. *Ticks Tick Borne Dis*. 2014; 5(1):1–6. Epub 2014/01/22. PMID: 24446554
47. Marsot M, Sigaud M, Chapuis JL, Ferquel E, Cornet M, Vourc'h G. Introduced Siberian chipmunks (*Tamias sibiricus barberi*) harbor more-diverse *Borrelia burgdorferi* sensu lato genospecies than native bank voles (*Myodes glareolus*). *Appl Environ Microbiol*. 2011; 77(16):5716–21. Epub 2011/06/28. <https://doi.org/10.1128/AEM.01846-10> PMID: 21705536
48. Marsot M, Henry PY, Vourc'h G, Gasqui P, Ferquel E, Laignel J, et al. Which forest bird species are the main hosts of the tick, *Ixodes ricinus*, the vector of *Borrelia burgdorferi* sensu lato, during the breeding season? *Int J Parasitol*. 2012; 42(8):781–8. <https://doi.org/10.1016/j.ijpara.2012.05.010> PMID: 22732161
49. Marsot M, Chapuis JL, Gasqui P, Dozieres A, Masseglia S, Pisanu B, et al. Introduced Siberian Chipmunks (*Tamias sibiricus barberi*) Contribute More to Lyme Borreliosis Risk than Native Reservoir Rodents. *PLoS One*. 2013; 8(1):e55377. <https://doi.org/10.1371/journal.pone.0055377> PMID: 23383170
50. Jacquot M, Bisseux M, Abrial D, Marsot M, Ferquel E, Chapuis JL, et al. High-throughput sequence typing reveals genetic differentiation and host specialization among populations of the *Borrelia burgdorferi* species complex that infect rodents. *PLoS One*. 2014; 9(2):e88581. <https://doi.org/10.1371/journal.pone.0088581> PMID: 24533116
51. Bonnet S, Choumet V, Masseglia S, Cote M, Ferquel E, Lilin T, et al. Infection of Siberian chipmunks (*Tamias sibiricus barberi*) with *Borrelia* sp. reveals a low reservoir competence under experimental conditions. *Ticks Tick Borne Dis*. 2015; 6(3):393–400. <https://doi.org/10.1016/j.ttbdis.2015.03.008> PMID: 25805623
52. McCabe GJ, Bunnell JE. Precipitation and the occurrence of lyme disease in the northeastern United States. *Vector Borne Zoonotic Dis*. 2004; 4(2):143–8. <https://doi.org/10.1089/1530366041210765> PMID: 15228815
53. LoGiudice K, Ostfeld RS, Schmidt KA, Keesing F. The ecology of infectious disease: effects of host diversity and community composition on Lyme disease risk. *Proc Natl Acad Sci U S A*. 2003; 100(2):567–71. <https://doi.org/10.1073/pnas.0233733100> PMID: 12525705;
54. Craine NG, Randolph SE, Nuttall PA. Seasonal variation in the role of grey squirrels as hosts of *Ixodes ricinus*, the tick vector of the Lyme disease spirochaete, in a British woodland. *Folia Parasitol (Praha)*. 1995; 42(1):73–80.
55. Dubska L, Literak I, Kocianova E, Taragelova V, Sychra O. Differential role of passerine birds in distribution of *Borrelia* spirochetes, based on data from ticks collected from birds during the postbreeding migration period in Central Europe. *Appl Environ Microbiol*. 2009; 75(3):596–602. Epub 2008/12/09. <https://doi.org/10.1128/AEM.01674-08> PMID: 19060160;
56. Kjelland V, Stuen S, Skarpaas T, Slettan A. *Borrelia burgdorferi* sensu lato in *Ixodes ricinus* ticks collected from migratory birds in Southern Norway. *Acta Vet Scand*. 2010; 52:59. Epub 2010/11/09. <https://doi.org/10.1186/1751-0147-52-59> PMID: 21054890;
57. Piesman J, Gern L. Lyme borreliosis in Europe and North America. *Parasitology*. 2004; 129 Suppl: S191–220.
58. Richter D, Schlee DB, Allgower R, Matuschka FR. Relationships of a novel Lyme disease spirochete, *Borrelia spielmani* sp. nov., with its hosts in Central Europe. *Appl Environ Microbiol*. 2004; 70(11):6414–9. <https://doi.org/10.1128/AEM.70.11.6414-6419.2004> PMID: 15528500
59. Hanincova K, Kurtenbach K, Diuk-Wasser M, Brei B, Fish D. Epidemic spread of Lyme borreliosis, northeastern United States. *Emerg Infect Dis*. 2006; 12(4):604–11. <https://doi.org/10.3201/eid1204.051016> PMID: 16704808

60. De Sousa R, Lopes de Carvalho I, Santos AS, Bernardes C, Milhano N, Jesus J, et al. Role of the lizard *Teira dugesii* as a potential host for *Ixodes ricinus* tick-borne pathogens. *Appl Environ Microbiol.* 2012; 78(10):3767–9. <https://doi.org/10.1128/AEM.07945-11> PMID: 22407681
61. Marie-Angele P, Lommano E, Humair PF, Douet V, Rais O, Schaad M, et al. Prevalence of *Borrelia burgdorferi* sensu lato in ticks collected from migratory birds in Switzerland. *Appl Environ Microbiol.* 2006; 72(1):976–9. <https://doi.org/10.1128/AEM.72.1.976-979.2006> PMID: 16391149
62. Classens. Migration et hivernage des Grives musciennes (*Turdus philomelos*) en France d'origines étrangères. *Gibier Faune Sauvage* 1988; 5:359–88.
63. Fingerle V, Schulte-Spechtel UC, Ruzic-Sabljic E, Leonhard S, Hofmann H, Weber K, et al. Epidemiological aspects and molecular characterization of *Borrelia burgdorferi* s.l. from southern Germany with special respect to the new species *Borrelia spielmanii* sp. nov. *Int J Med Microbiol.* 2008; 298(3–4):279–90. <https://doi.org/10.1016/j.ijmm.2007.05.002> PMID: 17616434
64. Kurtenbach K, Hanincova K, Tsao JI, Margos G, Fish D, Ogden NH. Fundamental processes in the evolutionary ecology of Lyme borreliosis. *Nat Rev Microbiol.* 2006; 4(9):660–9. <https://doi.org/10.1038/nrmicro1475> PMID: 16894341
65. Vennestrom J, Egholm H, Jensen PM. Occurrence of multiple infections with different *Borrelia burgdorferi* genospecies in Danish *Ixodes ricinus* nymphs. *Parasitol Int.* 2008; 57(1):32–7. <https://doi.org/10.1016/j.parint.2007.07.004> PMID: 17804280
66. Gassner F, van Vliet AJ, Burgers SL, Jacobs F, Verbaarschot P, Hovius EK, et al. Geographic and temporal variations in population dynamics of *Ixodes ricinus* and associated *Borrelia* infections in The Netherlands. *Vector Borne Zoonotic Dis.* 2011; 11(5):523–32. <https://doi.org/10.1089/vbz.2010.0026> PMID: 21083369
67. Reye AL, Stegny V, Mishaeva NP, Velhin S, Hubschen JM, Ignatyev G, et al. Prevalence of tick-borne pathogens in *Ixodes ricinus* and *Dermacentor reticulatus* ticks from different geographical locations in Belarus. *PLoS One.* 2013; 8(1):e54476. <https://doi.org/10.1371/journal.pone.0054476> PMID: 23349900
68. Halperin JJ. Neuroborreliosis. *J Neurol.* 2016. <https://doi.org/10.1007/s00415-016-8346-2> PMID: 27885483.
69. Vourc'h G, Marmet J, Chassagne M, Bord S, Chapuis JL. *Borrelia burgdorferi* Sensu Lato in Siberian chipmunks (*Tamias sibiricus*) introduced in suburban forests in France. *Vector Borne Zoonotic Dis.* 2007; 7(4):637–41. <https://doi.org/10.1089/vbz.2007.0111> PMID: 18021026
70. Vourc'h G, Abrial D, Bord S, Jacquot M, Masseglia S, Poux V, et al. Mapping human risk of infection with *Borrelia burgdorferi* sensu lato, the agent of Lyme borreliosis, in a periurban forest in France. *Ticks Tick Borne Dis.* 2016; 7(5):644–52. <https://doi.org/10.1016/j.ttbdis.2016.02.008> PMID: 26897396
71. Diuk-Wasser MA, Gatewood AG, Cortinas MR, Yaremych-Hamer S, Tsao J, Kitron U, et al. Spatiotemporal patterns of host-seeking *Ixodes scapularis* nymphs (Acari: Ixodidae) in the United States. *J Med Entomol.* 2006; 43(2):166–76. PMID: 16619595
72. Jouda F, Perret JL, Gern L. Density of questing *Ixodes ricinus* nymphs and adults infected by *Borrelia burgdorferi* sensu lato in Switzerland: spatio-temporal pattern at a regional scale. *Vector Borne Zoonotic Dis.* 2004; 4(1):23–32. <https://doi.org/10.1089/153036604773082960> PMID: 15018770
73. Ceballos LA, Pintore MD, Tomassone L, Pautasso A, Bisanzio D, Mignone W, et al. Habitat and occurrence of ixodid ticks in the Liguria region, northwest Italy. *Exp Appl Acarol.* 2014; 64(1):121–35. <https://doi.org/10.1007/s10493-014-9794-y> PMID: 24682615
74. Kiewra D, Stefanska-Krzaczek E, Szymanowski M, Szczepanska A. Local-scale spatio-temporal distribution of questing *Ixodes ricinus* L. (Acari: Ixodidae)-A case study from a riparian urban forest in Wrocław, SW Poland. *Ticks Tick Borne Dis.* 2017; 8(3):362–9. <https://doi.org/10.1016/j.ttbdis.2016.12.011> PMID: 28089124
75. Pichon B, Kahl O, Hammer B, Gray JS. Pathogens and host DNA in *Ixodes ricinus* nymphal ticks from a German forest. *Vector Borne Zoonotic Dis.* 2006; 6(4):382–7. <https://doi.org/10.1089/vbz.2006.6.382> PMID: 17187573
76. Vor T, Kiffner C, Hagedorn P, Niedrig M, Ruhe F. Tick burden on European roe deer (*Capreolus capreolus*). *Exp Appl Acarol.* 2010; 51(4):405–17. <https://doi.org/10.1007/s10493-010-9337-0> PMID: 20099011
77. Tagliapietra V, Rosa R, Arnoldi D, Cagnacci F, Capelli G, Montarsi F, et al. Saturation deficit and deer density affect questing activity and local abundance of *Ixodes ricinus* (Acari, Ixodidae) in Italy. *Vet Parasitol.* 2011; 183(1–2):114–24. <https://doi.org/10.1016/j.vetpar.2011.07.022> PMID: 21820245
78. Cagnacci F, Bolzoni L, Rosa R, Carpi G, Haufler HC, Valent M, et al. Effects of deer density on tick infestation of rodents and the hazard of tick-borne encephalitis. I: empirical assessment. *Int J Parasitol.* 2012; 42(4):365–72. <https://doi.org/10.1016/j.ijpara.2012.02.012> PMID: 22464896