

Early Inscriptions of Āndhradeśa

Results of fieldwork in January and February 2016

Stefan BAUMS, Arlo GRIFFITHS, Ingo STRAUCH & Vincent TOURNIER*

Introduction

The EFEO is currently administering an international collaborative research project entitled “From Vijayapurī to Śrīkṣetra: the beginnings of Buddhist exchange across the Bay of Bengal.” This project aims to investigate the early phases of Buddhist exchange across the Bay of Bengal based on a comprehensive study of the epigraphic record of the site of Nagarjunakonda (on the border of Telangana and Andhra Pradesh states) in India, and Śrīkṣetra (near the modern town of Pyay) in Burma, as well as related sites in both countries.¹ It will in due course deliver publications of the two epigraphic corpora in question, as a basis for comprehensive interdisciplinary investigation of the early history of Buddhist exchange between the east coast of India and the Pyu civilization of the Irrawady river valley in Burma.

As members of this larger project, we recently undertook fieldwork in the states of Telangana and Andhra Pradesh – an area we shall henceforward refer to as Āndhradeśa – with the principal aim to document inscriptions dating from the Ikṣvāku period (3rd–4th centuries CE). We recorded the present locations of known inscriptions as well as recent discoveries and took photographs, as a first step towards the publication of a corpus of the inscriptions of this period. Rather than concentrating only on the principal Ikṣvāku site (Nagarjunakonda) and the few other sites that have yielded inscriptions in the same characteristic Ikṣvāku script (Jaggayyapeta, Ghantasala, Phanigiri), we decided soon after our arrival in the field to cast our net more widely and to document all epigraphic material relevant to the early history of Āndhradeśa. Our reasons for doing so were that most of the sites immediately relevant for the aforementioned project have also yielded older inscriptions (mainly of the Sātavāhana period); that Buddhist inscriptions become rare in the area after the Ikṣvāku period, while there is

* The authors are affiliated respectively with the Ludwig-Maximilians-Universität München (baums@lmu.de); the EFEO and UMR 5189, Histoire et sources des mondes antiques, Lyon (arlo.griffiths@efeo.net); the Université de Lausanne (Ingo.Strauch@unil.ch); and SOAS, University of London (vt6@SOAS.AC.UK). They express their gratitude, for help received in connection with the research reported on in these pages, to Peter Bisschop, Emmanuel Francis, Valérie Gillet, Akira Shimada, and Jonathan Silk.

1. The project is being funded from 2015 to 2017 by a grant from the Robert H.N. Ho Family Foundation program in Buddhist Studies, administered by the American Council of Learned Societies.

reason to believe the most intensive period of epigraphical production in the Pyu context started only after that period (perhaps in the 5th–7th centuries range); and that explicitly non-Buddhist inscriptions are rare in Āndhradeśa before the rise of the Cālukya dynasty in the 7th century. The Indian wing of our project has thus evolved into a comprehensive survey of the Early Inscriptions of Āndhradeśa (EIAD), covering all records from the beginning of the epigraphic tradition in this part of India up to the rise of Telugu as epigraphical language of expression in the second half of the first millennium, as rough chronological cut-off point.²

No previous listing of the early epigraphy of Āndhradeśa, thus defined, exists, because previous research has tended to focus exclusively on the Ikṣvāku corpus, or exclusively on Buddhist material. Thus, the booklet *Inscriptions of the Ikṣvāku Period* by Srinivasan & Sankaranarayanan (1979) contains metadata on (but not the actual texts of) seventy-six inscriptions of the Ikṣvāku period plus four items not very aptly designated “Inscriptions of the Ābhīras,” three of which are part of our corpus. The inscriptions are arranged chronologically to the extent possible, and the work is on the whole well done, but does not seem to have included a solid fieldwork component, so that most entries are said to be “now kept in the Museum,” *i.e.*, the Museum of the Archaeological Survey of India (ASI) at Nagarjunakonda, whereas this Museum’s records, dating back well before 1979, lack corresponding entries for quite a few.³ Raghunath’s book *The Ikṣvākus of Vijayapuri* (2001) presents itself as a comprehensive corpus for the Ikṣvāku period. The work is however poorly done to the point of being unusable.⁴ Neither of these two works defines precisely on what grounds certain inscriptions which do not mention any Ikṣvāku monarch are nevertheless included in their listings, while apparently absence of such mention is in general the reason for not including others.

2. See Nagaraju (1995: 10): “The new phenomenon emerges not in the then agriculturally rich, politically well-consolidated, and culturally forward regions of the Krishna and Godavari valleys, but in the far southern region of Andhra, in Rayalaseema to the south and west of the Nallamalai hills. The earliest Telugu inscriptions datable to the sixth century C.E. come from the district of Cuddapah. From the seventh century Telugu inscriptions begin to appear in the adjoining districts of Anantapur, Chittoor, Nellore and Prakasam, and in the western dry belt of Guntur. In the next century (the eighth), the use of Telugu in epigraphical records is seen farther to the north in the districts of Mahaboobnagar and Nalgonda. Except for one doubtful record, the early Telugu inscriptions in Krishna district are datable to the ninth century. The first Telugu inscription in Warangal district belongs to the late ninth or early tenth century C.E. All other districts of northern Andhra (Karimnagar, West and East Godavari, Visakhapatnam, Vijayanagaram, and Srikakulam) open their accounts only in the eleventh century C.E.”

3. Their inscription no. 71 (EIAD 77), for instance, on a broken pillar found at the site called “University,” was said to be “kept in the Museum,” although it is today found in the reconstructed site at Anupu on the south shore of the Nagarjuna Sagar, and presumably never entered the Museum; their no. 75 (EIAD 99) is not engraved on a “white marble slab” but on the flank of a sculpture of a lion. Finally, for none of the Jaggayyapeta pillar inscriptions (their nos. 22–24, EIAD 31–33) is any indication of their whereabouts made. At least one of them (EIAD 32) was kept at Madras/Chennai since 1901 (acc. no. 1901/72). Another one is preserved in the reserves of the Amaravati site museum (EIAD 33, acc. no. 306), together with an unpublished fragment of a fourth pillar (EIAD 90, acc. no. 506).

4. Among many issues, let us mention here only the fact that the work contains multiple entries for single inscriptions. Its 7A, for instance, is the same inscription as its 9B (EIAD 9); its 10B = 10D (EIAD 17); its 13D = 24 (EIAD 27); etc. Its usefulness is further impaired by an astounding number of misprints.

Two other works are not focused on the Ikṣvāku period, but on Buddhist inscriptions, which means excluding the – admittedly rare – non-Buddhist epigraphy of early Āndhradeśa. The book entitled *Buddhist Inscriptions of Andhradesa*, brought out by Hanumantha Rao *et al.* in 1998, covers a large percentage of the Buddhist inscriptions of Āndhradeśa, presenting stone inscriptions from more than thirty-five sites in addition to all copper-plate inscriptions of Āndhradeśa that involved grants to Buddhist institutions. Nevertheless, it is not free of omissions in terms of sites,⁵ and like the other works mentioned here was compiled without systematic collection of material in the field, so that listings for included sites are also not exhaustive.⁶

The same objection must be raised, even more forcefully, against the relevant volume of *A Comprehensive Study of the Indian Buddhist Inscriptions* (Tsukamoto 1996).⁷ This work was obviously not based on any fieldwork component at all, and its literature review shows surprising omissions: Rentala, site of a Buddhist inscription of the Ikṣvāku period whose discovery goes back to 1936–1937, is missing;⁸ so is the Palnad Marble of the post-Ikṣvāku period;⁹ not to mention the numerous copper-plate inscriptions recording donations to Buddhist institutions or the potsherd inscriptions from Salihundam.¹⁰ The work covers only a meager seventeen sites for “Southern India,” *i.e.*, Tamil Nadu and undivided Andhra Pradesh, and is incomplete even for the sites that it does cover. We are thus, at least for this part of Tsukamoto’s work, unable to agree with the high praise accorded to it by Gérard Fussman when he reviewed the work in the pages of this *Bulletin* fifteen years ago.¹¹ But the French scholar was very right to remind his readers of the state of the art:

5. For instance, it does not record Raghunath’s 58A (EIAD 78), a pre-Ikṣvāku Buddhist inscription from Gangaperuru: reported first in ARIE 1939–1940, B.17, p. 228 and reported again by Parabrahma Sastry (1975, no. 366), this inscription was first published by Srinivasan (1965–1966) and republished by Parabrahma Sastry (1977: 1, no. 1).

6. Thus for instance only four entries are included for the site Ghantasala (see below), whereas our inventory lists eleven inscriptions for this site.

7. Shizutani 1965 is an earlier Japanese compilation of Buddhist inscriptions from Āndhradeśa on which Tsukamoto drew.

8. EIAD 2. See ARIE 1936–1937, B.349, p. 62; Sankaranarayanan 1967–1968: 31–32; Raghunath 2001: 69 (no. 2). The present whereabouts of this inscription are unknown to us.

9. EIAD 138. See Sewell 1880: 63–66; British Museum, acc. no. 1880,0709.67.

10. For copper-plate grants to Buddhist institutions that could have been known to Tsukamoto, see Sankaranarayanan 1977 (items I, VIII, XI and XII); on the Buddhist epigraphic material from Salihundam, see Gadre 1955–1956 and Subrahmanyam 1964. For all of these, see Hanumantha Rao *et al.* 1998, itself obviously a source that appeared too late for it to be taken into account by the compilers of *A Comprehensive Study of the Indian Buddhist Inscriptions*. Inexplicable omissions of this kind are so numerous in this work that we consulted our colleague Akira Shimada asking whether Tsukamoto’s Japanese-language Introduction explains his criteria for inclusion or exclusion of certain inscriptions. In an email of 31/03/2016, Shimada answered: “[Tsukamoto’s Preface and Introduction] do not explain the collection policy (date, medium etc.). I do not think Tsukamoto intended to collect only stone inscriptions, as the volume includes copper plate inscriptions and inscriptions cut on bronze images, particularly in the Eastern India section. I guess he and his team simply did not know many Salihundam, Vaddamanu and copper-plate inscriptions found in Andhra, as they did not have good access to resources.”

11. G. Fussman, review in *BEFEO* 88 (2001), pp. 383–385. See p. 383: “L’ouvrage est monumental, la conception grandiose, la réalisation parfaite” (our emphasis).

The scholarly backwardness of epigraphy as it is practiced in India today has often been lamented by our Indian colleagues themselves. Tens of thousands of inscriptions remain unedited, those which are published are not published well and since a number of years printed even less well. Errors of reading and of printing are so numerous that it is never possible to rely on a publication. It is always necessary to consult the original, which is rarely reproduced in usable form. Comprehensive tools that would allow the historian to use this enormous quantity of material are lacking.¹²

Progress in the field of Indian epigraphy must be based not only on a comprehensive survey, but first-hand reading and re-reading of inscriptions, which in turn require access to publications as well as to usable reproductions. In the absence of the latter, it is generally necessary to go and find the original inscriptions in the sites or museums where they are preserved. Given this state of affairs, the task we have defined for ourselves is in the first instance to compile an exhaustive inventory of the early epigraphy of Āndhradeśa, without any limitations in terms of religion or dynasty, an inventory that assembles the most important metadata concerning each inscription – its find-spot, present place of preservation, available estampages or photos, relevant bibliography, but also the nature (object type) of the support on which it is engraved, its dimensions, the number of lines that it spans, and the language(s) in which it is formulated. We will publish our inventory and discuss its features in greater detail in a future publication, but already begin here to make use of the fixed EIAD numbers that we assign to the inscriptions.¹³

In what follows, we first present a narrative account of our two weeks of fieldwork in January and February 2016, and then illustrate the results of our work so far by discussing in detail a selection of specific inscriptions, several of them so far unpublished, from three different sites.¹⁴ A map (fig. 1) shows the principal places mentioned in this report.

12. *Ibid.* : « Le retard scientifique de l'épigraphie telle qu'on la pratique aujourd'hui en Inde a souvent été dénoncé par nos collègues indiens eux-mêmes. Des dizaines de milliers d'inscriptions restent inédites, celles que l'on publie sont mal publiées et depuis quelques années plus mal imprimées encore. Les erreurs de lecture et d'impression sont si nombreuses qu'on ne peut jamais faire confiance à la publication, il faut toujours se reporter à l'original, rarement reproduit sous forme utilisable. Les instruments de synthèse qui permettraient à l'historien d'utiliser cet énorme matériel font défaut. »

13. We intend to publish our inventory, editions and translations on the website <http://epigraphia.efeo.fr/andhra>.

14. Our transliteration system is compliant with ISO standard 15919 (see the entry ISO 15919 in our bibliography), except for our consistent use of the raised circle ° to indicate independent vowel signs, rather than the colon sign : prescribed by ISO 15919, rule 15, only when it is necessary to disambiguate transliterations. Our editorial conventions are as follows: we give physical line numbers in parentheses and bold face; square brackets [] surround uncertain readings; parentheses () editorial restorations of lost text; angle brackets < > editorial additions of omitted text; question marks represent entirely illegible akṣaras; the plus sign akṣaras that are entirely lost; the diamond symbol ◇ horizontal space used as punctuation; triple slash /// the left or right edge of the support if it is fragmentary.

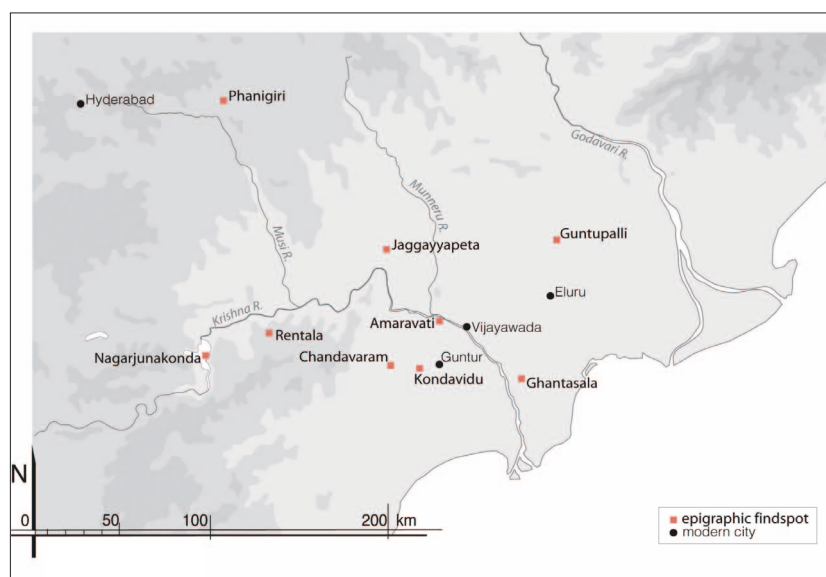


Fig. 1 — Places mentioned in this report. Map by Pierre Pichard.

Fieldwork in January and February 2016

Project coordinator Arlo Griffiths spent 25–29 January in Delhi to obtain authorization for work at Nagarjunakonda from the headquarters of the Archaeological Survey of India (ASI). Much of the preparatory work having been accomplished through email exchange with the ASI’s Director of Museums Dr. Urmila Sant, the process did not meet with any obstacles. During his short stay in New Delhi, Griffiths had the opportunity to visit the National Museum, which is home to a Nagarjunakonda inscription published by Dutch archaeologist J.Ph. Vogel, engraved on the *buddhapāda* excavated by his British colleague A.H. Longhurst in the 1920s (acc. no. 50.24).¹⁵

All authors of this report then assembled in Hyderabad on Saturday the 30th of January. The next day, we paid a first informal visit to the Telangana State Museum, whose collections apparently comprise all those of the State Museum of former undivided Andhra Pradesh. It is home to two fragments of inscriptions excavated at Phanigiri.¹⁶ We also observed that two stones labeled as “dome panels” (apparently drum slabs) from Chandavaram (a site which falls within the new state of Andhra Pradesh) bear inscriptions: the one with mason’s marks *10 8*, the other with an all but illegible inscription in two lines.¹⁷

15. EIAD 96. See Vogel 1929–1930b; Longhurst 1938: 24, pl. XIXa; Raghunath 2001: 191 (no. 77).

16. EIAD 112 (acc. no. 2005-401, unpublished) and 113 (acc. no. 2005-402, Subrahmanyam *et al.* 2008: 37, no. 9).

17. EIAD 237 (acc. no. 6651) and 238 (acc. no. 229). The only published epigraphic material from Chandavaram that we are aware of are the two short inscriptions presented by Hanumantha Rao *et al.* 1998: 123. It appears that neither one of these can be identified with anything we saw at the Museum.

On the morning of Monday the 1st February, we went to meet the director of the Telangana State Department of Archaeology and Museums, Mrs. N.R. Visalatchi, in order to discuss our work and seek her advice. Among Buddhist sites in Telangana State, we were previously aware of inscriptions having been found at Phanigiri, so planning a visit to that site was our main subject of discussion. Phone calls were made for this visit to take place on the 3rd. Next we visited the Telangana State Archaeological Museum, which is home to further fragments of Phanigiri inscriptions.¹⁸ Unfortunately they are kept in a glass case, and despite repeated efforts it turned out to be impossible to locate the keys that would have made it possible to open the case in order to take good photographs of these fragments. In the afternoon, we went to the office of the Hyderabad Circle of the ASI, in order to meet Superintending Archaeologist Nizamuddin Taher. His staff members Assistant Superintending Archaeologist Ch. Babji Rao and Deputy Superintending Archaeologist D. Kanna Babu also attended the meeting. We discussed various sites to be visited in both states that fall under the Hyderabad Circle's jurisdiction.

Tuesday the 2nd was an election day, so site or museum visits were impossible. We were joined in the evening by Valérie Gillet of the Pondicherry EFEO center, who was to accompany us during the next ten days. Wednesday 3rd February, we drove out early in the morning in the direction of Phanigiri. In the village, we were awaited by archaeologist Mr. Rajulu. We first visited the site which lies on top of the hill that has given the village its name. One inscription, previously unpublished, remains on the site: it is engraved on a pillar which stands on the western *āyaka* platform of the heavily restored Great Caitya.¹⁹ The astoundingly beautiful statues, *torāṇa* and other artwork from the site are stored in a house in the village, along with a small handful of significant inscriptions, which we were able to document. For more details on Phanigiri and its inscriptions, see below (pp. 368–378).

On the 4th of February, we returned to the Telangana State Museum in order to document the two Phanigiri fragments identified on 31st of January as well as some of the important copper-plate inscriptions held in this Museum's rich collection, among them most notably the only Ikṣvāku copper-plate grant known to date: the Patagandigudem charter of Ehavala Cāntamūla.²⁰ We were also able to photograph interesting grants to Buddhist institutions of the Viṣṇukuṇḍin period.²¹ In the evening we drove to our next base, at Vijayawada.

From here, on Friday the 5th of February, we visited Guntupalli in West Godavari District, the site furthest to the northeast that we were able to visit during our trip. Its interesting epigraphic corpus does not comprise any Ikṣvāku inscription as such: it mainly comprises inscriptions that may be assigned to the Sātavāhana period, but also includes an inscription of

18. EIAD 116 (Subrahmanyam *et al.* 2008: 36, no. 6), 117 (unpublished) and 118 (unpublished). No acc. nos. seem to have been assigned to these fragments.

19. EIAD 114.

20. EIAD 55; accession numbers 98-15. See Falk 1999–2000.

21. On some of these, see Tournier in progress.

Śālaṅkāyana Nandivarman as well as a citation inscription in a script that seems posterior to the Ikṣvāku period.²² The disconcerting conclusion of our visit was that almost none of the interesting inscriptions brought to light in the 1970s, some of which were still present on the site in the early 1980s,²³ can be found here today. Enquiries made with ASI officers in Hyderabad on where the missing inscriptions might have been moved did not yield any answers. By way of compensation, however, we were able to track down a recently discovered and still unpublished inscription, which we present in more detail below (pp. 364–368).

The next day, Friday the 6th of February, we visited the site Ghantasala (ancient Kaṇṭakasola, known to Ptolemy as Kantakossyla),²⁴ whose epigraphic corpus was published by J.Ph. Vogel in 1947–1948. Vogel knew a total of five inscriptions from this site, including a set of two pillars as well as a sculpture of a lion engraved in the script characteristic of the Ikṣvāku corpus – although no king of any dynasty is mentioned here – and all these three inscriptions are safely preserved in the site museum.²⁵ The other two inscriptions published by Vogel, in somewhat more archaic script, could unfortunately not be traced.²⁶ We did, on the other hand, find an inscribed colonette that had been discovered after Vogel's publication,²⁷ as well as a handful of seemingly unpublished items. In this connection, we must mention an article by Somasekhara Sarma (1974). Although it does not mention Vogel's previous publication, it nevertheless seems to be based on it for readings and estampages. The author claims to have visited the site, but presents almost no new information based on field observations except for the following (Somasekhara Sarma 1974: 2):

I was told that the foundations of some *stūpas* were found in some places when excavations were made by private people and that some inscriptions were discovered on the foundation slabs and stones of the *stūpa*. I have seen some years back printed copies of these inscriptions with a friend of mine who wanted to publish them in a Telugu journal. Unfortunately he has not published them until now and I do not know if the blocks prepared out of the estampages of those inscriptions are now extant, and if that friend preserved even those estampages. The letters are in the shape of floral designs and exactly resemble those of the inscriptions of the island of Jāva which were edited by the late K.P. Jayaswal in the *Epigraphia Indica* Vol. XXII p. 4ff.

This is clearly a reference to the presence of *śaṅkhalipi* at Ghantasala, and among the apparently unpublished material that we found was indeed one

22. See Sircar 1969–1970 (no. 1), Sankaranarayanan 1977–1978, Sarma 1988 (chapter 3), and Skilling 1991.

23. We know this from photographs that John Huntington was able to take during a visit in that period, and which this colleague has kindly shared with us.

24. See Ghosh 2006.

25. EIAD 97–99; Vogel 1947–1948, items A, B and C. The first bears museum no. 27, the second and third stones did not show any number.

26. EIAD 100 and 124; Vogel 1947–1948, items D and E.

27. EIAD 126; ARIE 1956–1957, B.41; museum no. 2.

slab with an inscription in this script (fig. 2), around the short label inscription *sumanaśila* in Late Southern Brāhmī of about the 6th or 7th century (fig. 3).²⁸ Another label inscription from roughly the same period reads || *nāgārjunaśrī* || (fig. 4).²⁹

On Saturday the 7th February we drove from Vijayawada to Nagarjunakonda through Guntur and Amaravati. At Guntur, we visited the Baudhasri Archaeological Museum where, thanks to the very helpful officer in charge, Mr. R. Phalguna Rao, we were able to document a set of three copper-plate inscriptions of the 6th century, found at the site Kondavidu, that cast interesting light on the post-Ikṣvāku history of Buddhism in this region and have not yet been served by a good publication.³⁰ At Amaravati, we first stopped by the Archaeological Museum and Interpretation Centre “Kalachakra,” not knowing that a rather rich collection of Sātavāhana-period inscriptions awaited us there. This collection assembles materials from various early sites of undivided Andhra Pradesh, notably Kesanapalli whose epigraphical corpus is the only one of these sites to have been prominently published.³¹ Next, we visited the main archaeological site and the site museum, but as we had neglected, at the ASI headquarters in New Delhi, to request authorization for photography at the Amaravati site museum, we were unable to do more than note the inscriptions preserved there, and had to postpone this task until a future visit. We arrived late at night at our hotel on the northern shore of Nagarjuna Sagar.

On February 8th through 11th we were able to work on Nagarjunakonda island under the very helpful supervision of ASI officer G. Surya Prakash. In the present state of our knowledge, Nagarjunakonda inscriptions are stored at various separate locations: one, as mentioned above, is held at the National Museum in New Delhi. On the island itself, several inscriptions are prominently exhibited in the Nagarjunakonda Museum, while some minor or fragmentary items are kept in one or the other of two storage spaces inside this museum that are not normally open to the public. There is a separate storage shed, also not normally open to the public, situated along the path to the reconstructed Great Caitya; at the latter, two fragments of inscriptions are mounted respectively on the western and southern *āyaka* platforms; and, finally, on the way to the storage shed there is an enclosure inside the medieval fortification, the gate into which has been filled up with stones, but which can be reached by clambering over the walls. Most of these locations shelter more than one inscription, and not all of these bear ASI inventory numbers. On the southern shore of Nagarjuna Sagar, in the village Anupu, one more inscription is to be found in the so-called University site. All these locations combined, we have identified a total of 66 Nagarjunakonda inscriptions, among which 8 are previously unpublished. However, there is also a substantial number of inscriptions

28. EIAD 128 A and B; the stone bears no museum number.

29. EIAD 125; the stone bears no museum number.

30. EIAD 187–189; Baudhasri Archaeological Museum acc. nos. 171, 170, 169; see Krishna Sastry 1990 and Hanumantha Rao *et al.* 1998: 211–219.

31. See Khan 1969. Several of the inscriptions from other sites held in this museum do figure in Hanumantha Rao *et al.* 1998.



Fig. 2 — Slab from Ghantasala bearing a label inscription (EIAD 128 A) encircled by śaṅkhalipi (EIAD 128 B).



Fig. 3 — Close-up showing EIAD 128 A.



Fig. 4 — Label inscription from Ghantasala (EIAD 125).

that in all probability were never moved away from Nagarjunakonda but that we have not yet been able to trace. Some of these may still be identified during future fieldwork, as we did not have time to turn all stones at all the locations on the island. One inscription we were able to identify on the island is the subject of detailed discussion below (pp. 379–389).

On 12th February we drove back to Hyderabad. Before our team parted ways, we had occasion to visit the Birla Science Museum, which holds numerous inscribed artifacts – potsherds as well as stone architectural elements – from the site Vaddamanu, which was the subject of private excavations in the 1980s and received a remarkable excavation report.³² In this report, and at the Museum, the site is considered to be Jaina, but sound arguments for assuming this religious affiliation seem to be lacking. Judging from our preliminary evaluation of the epigraphic material, we consider it likely that Vaddamanu was in fact a Buddhist site.

Limestone *maṇḍapa* pillar from Kantamanenivarigudem, near Guntupalli

The group of Buddhist monuments at Guntupalli is situated on a horseshoe-shaped hill about 40 km north of Eluru, headquarters of West Godavari District in Andhra Pradesh, and 10 km west of the *mandal* headquarters Kamavarapukota. The site comprises, among other remains, a rock-cut *caitya* hall and rock-cut monastic quarters, as well as *stūpas* constructed in brick. The group has been the object of repeated archaeological investigations from the 19th century onward,³³ and has yielded a number of inscriptions.³⁴ Already in 1976, the ASI undertook explorations at a site near the village Kantamanenivarigudem or Jeelakaragudem, *ca.* 2.5 km south of Guntupalli.³⁵ In 2006, the ASI excavated the remains of two apsidal *caitya* halls. The results of these excavations have not yet been published. Some information was, however, made public in short newspaper articles.³⁶ According to one of these, an inscribed pillar was found in the vicinity of a *caitya*. Based on a preliminary reading prepared by D. Kanna Babu, then Assistant Superintending Archaeologist of the ASI's Hyderabad Circle, the inscription would be translatable as follows: “Gift of vessel full of coins (Masakas)

32. Sastri *et al.* 1992.

33. See Shimada 2013 for an overview of scholarship to date.

34. The inscriptions are presented in Sarma 1988, chapter 3. As we noted above, only a few of these inscriptions can still be traced today.

35. See IAR 1976–1977, p. 10: “Shri I. K. Sarma of the South-eastern Circle of the Survey located an ancient site near Kantamanenivarigudem on the bank of an ancient nullah towards south-west of Guntupalli. The site was found studded with baked brick structures. The exposed sections of the site revealed a cultural sequence extending from the early historical to the late medieval times. Among the finds, mention may be made of a sculpture of Jaina tirthankara and sherds of black-and-red and red-slipped wares.”

36. See <http://www.thehindu.com/todays-paper/tp-national/tp-andhrapradesh/buddhist-chaitya-gruhas-discovered-in-west-godavari/article1871700.ece> and <http://www.thehindu.com/todays-paper/tp-national/signs-of-early-dakiniyana-buddhism/article3092455.ece> (both accessed 25th July 2016).



Fig. 5 — Limestone *maṇḍapa* pillar from Kanta-manenivarigudem, near Guntupalli.



Fig. 6 — Lateral face of the *maṇḍapa* pillar from Kanta-manenivarigudem.

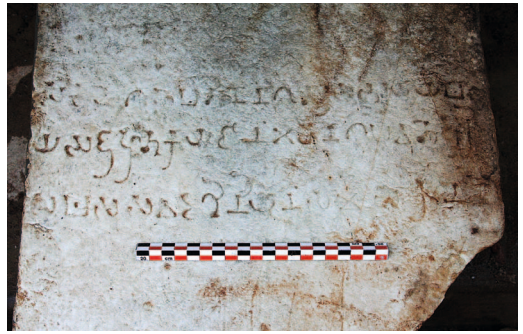


Fig. 7 — Inscribed part of the *maṇḍapa* pillar from Kanta-manenivarigudem (EIAD 220).

made to the benefit of Aryasangha and followers of Dakiniyana residing at Jinanagamahaparvatha by the householder (Nagaputa) hailing from Sakuda along with his wife Bodhi and daughter.” During our visit to Guntupalli, local people showed us where the inscription has been discovered (81°06'53.9 E, 16°59'46.4 N) and subsequently made it possible for us to document this artifact in a storage building at the entrance of the site. It is fragmentary, because both the upper and the lower extremity of the original have broken off; it also seems to have been vertically split, so that we cannot determine whether its original horizontal section was quadrangular or rectangular, as it is now. The fragment measures 108 cm in height, 40 cm in width, and 14 cm in thickness (fig. 5). Remains of a half octagonal section are visible on the top, developing down into the very common half-lotus motif, below which is applied a band of animals (a lion, a goat or a horse, a pig/boar) moving along the pilaster in *pradakṣiṇa*.³⁷ These ornamental elements are also continued on the two lateral faces (fig. 6). On the large flat surface that makes up the lower part of the front face is found an inscription in three lines covering almost the entire width of this face, the inscribed surface measuring 12 cm in height (fig. 7). We have assigned it the inventory number EIAD 220. Our reading and translation are presented below.

37. For a comparable pillar, but one that is square in section, see Rosen Stone 1994: 81 and fig. 240.

EIAD 220

- (1) sakule gahapatino nāg[u]tarasa bhar(i)yāya b[odhā]-
 (2) ya saduhutukāya dānaṃ mahānāgapavate °ari[ya]-
 (3) sa[gha]sa savadakhiniyānaṃ samo[sa]rane³⁸

“(This is) the gift of Bodhā, wife of the householder Nāgutara (Skt. Nāgottara) in Sakuḷa, together with (her) daughter(s), at the gathering hall of those worthy of all honor of the noble community at Mahānāgapavata.”

The first part of the text poses no particular problems and is largely parallel to a previously published epigraph on a limestone pillar from Guntupalli.³⁹ According to our revised reading based on the published images of this pillar, this inscription contains the following text:

EIAD 216

- (1) sa[ku]le gahapat[i]no haṃghasa
 (2) bhariyāya °upāsikāya budh[i]-
 (3) ya deyadhama °inaṃmi mahā-
 (4) selamaḍave jasakhaṃbhā
 (5) māhā[n]āgapavate °ariyasam-
 (6) ghasa patiṭh[ā]pitam⁴⁰

“The fame-pillar was established in this great stone pavilion as meritorious gift of the lay-follower Budhi, the wife of the householder Haṅgha in Sakuḷa, for the noble community at Mahānāgapavata.”

As we see, both epigraphs record donations by the wives of householders residing at a place named Sakuḷa. This toponym can perhaps be associated with a place mentioned in the *Cullahaṃsajātaka* and situated near a Lake Manusiya. In this story,⁴¹ a king named Sakuḷa is said to have ruled in a city of the same name. The story is situated in the Mahimsaka country, a region that is also mentioned in the early inscription of the Mahāmeghavāhana king Siri-Sada found in four copies at Guntupalli.⁴² In a brief contribution on the

38. In l. 1 *-patino*, the shape of *no* is irregular. In l. 2 *dānaṃ*, the shape of *dā* is irregular.

39. Our EIAD 216. See Srinivasan 1973: 250–251 (II), pl. II; Sarma 1978: 54–55, pl. VIII-10; Sarma 1988: 65–66, 77–78 (I-14, misprint for I-10), pl. 29 (A, B, C). A long inscription of Śālaṅkāyana Nandivarman (our EIAD 164) was added below EIAD 216 several centuries after it had been initially engraved. The whereabouts of this important pillar are not known to us and were unknown also to all authorities with whom we made enquiries on the epigraphical material from Guntupalli.

40. Variant readings in editions Srinivasan 1973 (Sr) and Sarma 1988 (Sa): *sa[ku]le* Sr; *sidham* Sa • *bharyāya* Sr; *bharyayā* Sa • *budh[i]ya* *budhāya* Sr; *budha(dhi)ya* Sa • *mahāselamaḍave* *mahāselameḍava* Sr; *mahāselamaḍhave* Sa • *patiṭh[ā]pitam* *patiṭhapitam* Sr Sa.

41. Cf. Ja V 337.20ff.

42. EIAD 203–206. See Subrahmanyam 1968, pl.; Sircar 1969–1970: 35–36, pl. IV; Srinivasan 1973: 247–250, pl. I; ARIE 1974–1975, B.7; Sarma 1978: 49–51, pl. II-1; Sarma 1988: 65, 68–71 (I-1). We only found one of these four pillars on the site (EIAD 204). In the early 1980s, John Huntington still found three (see Huntington Archive 26901, 26904, 26910; <http://huntingtonarchive.org/>, accessed 30th March 2017).

matter, D.C. Sircar has identified the Mahimsaka country with “the present Chanda District of Maharashtra” (actually called Chandrapur nowadays), “to the immediate north of the East Godavari District” in Andhra Pradesh.⁴³

Both donations are for the benefit of the noble community (*ariyasamgha*, Skt. *āryasamgha*) of Mahānāgapavata, a toponym that is well attested as the ancient designation of the Guntupalli monastic complex in several inscriptions from the site. Whereas EIAD 216 contains one of the usual formulaic phrases used for *deyadhamma* donations, our new text deviates from this conventional pattern. Its final phrase *savadakhiniyānam samo[sa]-rane* is unattested so far in any inscriptions known to us. The Prakrit word *samosarana* corresponds to Pali *samosaraṇa* (Skt. *samavasaraṇa*) “coming together, meeting, union, junction” (PTSD s.v.). This meaning “meeting, coming together” is implied by the Pali *Aṭṭhakathās*, for instance in Buddhaghosa’s commentary on the expression *brāhmaṇagāma* “brahmin village,” in the *Ānguttaranikāya*.⁴⁴

brāhmaṇagāmo ti brāhmaṇānaṃ samosaraṇagāmo pi brāhmaṇagāmo ti
vuccati brāhmaṇānaṃ bhogagāmo pi

“*brāhmaṇagāma*: both a village that is a meeting place of brahmins and a village [the revenue of] which is enjoyed by brahmins are called ‘brahmin village’.”

This meaning is also attested in Buddhist Sanskrit texts, such as the *Gaṇḍavyūha*, where we find *samavasaraṇa* embedded in a string of closely related terms, including *samāgamana*, *saṃnipāta*, *upasaṃkramaṇa*.⁴⁵ Speaking of the cognitive limitations of *mahāśrāvaka*s such as Śāriputra, the text says:

nāpi tam acintyaṃ bodhisattvaviṣayaṃ bodhisattvasamāgamaṃ
bodhisattvasamavasaraṇaṃ bodhisattvasaṃnipātaṃ bodhisattvo-
pasamkramaṇaṃ bodhisattvavikurvitāṃ bodhisattvapratihāryaṃ
bodhisattvaparśanmaṇḍalaṃ bodhisattvadigavasthānaṃ bodhi-
sattvasimhāsanavyūhaṃ bodhisattvabhavanaṃ bodhisattvavihāraṃ ...
adrākṣuḥ |

“Also, they did not see the inconceivable range of Bodhisattvas, the coming together of Bodhisattvas, the gathering of Bodhisattvas, the approach of Bodhisattvas, the wonder of Bodhisattvas, the miracle of Bodhisattvas, the circle of the assemblies of Bodhisattvas, the abiding by Bodhisattvas in the [various] directions, the magnificent array of the lion’s seats of Bodhisattvas, the mansion of Bodhisattvas, the dwelling of Bodhisattvas.”

Interestingly, the term *samosaraṇa* is also well-known in Jaina sources, where it refers primarily to a sacred assembly held outdoors, before developing into a complex structure hosting such an assembly that is invested with highly

43. Sircar 1972–1973: 166–168.

44. Cf. AN-a II 285.27–28 on AN I 180.15.

45. Ed. Suzuki & Idzumi 1949, pp. 17–18.

elaborate symbolism.⁴⁶ While in the Buddhist context, the use of *samosaraṇa*/*samavasaraṇa* to refer – by metonymy – to a place of religious assembly is, as far as we are aware, unattested, it is tempting to interpret this term in such a way in the Kantamanenivarigudem inscription. Indeed, as shown by EIAD 216 and by two other inscriptions from Guntupalli,⁴⁷ there is a clear tendency for inscriptions engraved on pillars to refer – in the locative – to the broader structure to which they belong. Since the newly published pillar fragment is typologically similar to the *maṇḍapa* pillars from the site – although it has the peculiarity of being split vertically – one might speculate that it could have belonged to a structure resembling a *maṇḍapa*, but designated as *samosaraṇa*.

The preceding term *savadakhiniyānam* was interpreted by Kanna Babu as reference to a hitherto unattested Buddhist school, the “Dakiniyana.” It seems, however, preferable to interpret this word as a descriptive term for those assembled. The only other attestation of the term known to us – albeit in its Sanskrit equivalent – is *Śikṣāsamuccaya* (ed. Bendall 1897–1902) 286.4 *śuśrūṣaṇatā sarvadakṣiṇīyeṣu* in a list of resolutions undertaken by a Bodhisattva. Bendall & Rouse (1922: 261) translate “readiness to hear for all those worthy of honour.” We think, however, that this term in our inscription (and, by implication, also in the *Śikṣāsamuccaya*) should be interpreted in parallel with the epigraphic expression *agrodakṣiṇea* “worthy of the highest honor” in line 8 of the Gāndhārī inscription of King Senavarman (CKI 249 in Baums & Glass ongoing, line 8). The base word *agradakṣiṇa* in the Gāndhārī inscription of Śatrea (CKI 326, line 2) shows that here *agra-* modifies *dakṣiṇā* rather than *dakṣiṇīya*, and by analogy *savadakhiniya* in our inscription should mean “worthy of all honor” (cf. also BHSD s.vv. *dakṣiṇīya*, *dakṣiṇeya*).

Two inscriptions from Phanigiri

The Buddhist site of Phanigiri (Nalgonda District, Telangana), lies on the left bank of the Musi river, a tributary of the Krishna, approximately 90 km due east from Hyderabad, and about 130 km north from Nagarjunakonda. It forms part of a cluster of Buddhist sites also including Gazulabanda, Vardhamanukota, Thirumalagiri and Aravapalli. The site is located, just to the northeast of the village, on a hilltop shaped like a snake’s hood that has given the site and village their name. First trial digs were carried out in 1941–1944, and thorough excavations in four fieldwork seasons between 2001 and 2007.⁴⁸ These brought to light a Great Caitya with a diameter of 18 m, seven smaller *stūpas*, two apsidal temples (*cetiyaḥara*), congregation halls (*maṇḍapa*) supported by pillars and six monastic living quarters (*vihāra*), all dating from

46. For a rich survey of the meanings of this notion in Jaina literature, see Balbir 1994. On the use of *samavasaraṇa* as a model for temple architecture in Medieval India, with a focus on Ellora, see Owen 2012: 15–39.

47. Cf. Sarma 1988: 65–66, 75–76 (I-7, I-8), figs. 26–27 (EIAD 213–214).

48. Subrahmanyam *et al.* 2008: 5. See also the excavation reports for 2001–2002 and 2002–2003 available at <http://museums.ap.nic.in/Phanigiri.html> (accessed 11 June 2016).

the 1st century BCE to the 4th century CE. The western and northern *āyaka* platforms of the Great Caitya preserved several stumps of original sets of five lime-stone pillars each, and excavation of the congregation hall yielded a further 16 pillar stumps. Numerous pieces of lime-stone sculpture found on site have attracted the attention of art historians for their rich content and beautiful execution and for their stylistic relationship to the Buddhist art of Amaravati and Nagarjunakonda.⁴⁹

Phanigiri is also an important site for the early epigraphy of Āndhradeśa. According to Subrahmanyam *et al.* (2008: 32), “a total number of 42 Brahmi inscriptions” were found there.⁵⁰ So far, less than half of these (15 by our count) have been individually noted in the literature known to us, and not all of these with readings and illustrations. During our own fieldwork in February 2016, we located six Phanigiri inscriptions (EIAD 108, 111, 112, 114, 117 and 118) that to our knowledge have not been individually noted in the literature and that may or may not be included in the total number of 42 given by Subrahmanyam *et al.* 2008. We were able to take good photographs of these six new inscriptions, and also to re-photograph the 15 known Phanigiri inscriptions, which allowed us to re-evaluate and in several cases improve their previously published readings. In the following, we will as a sample present our improved reading and interpretation of a donative inscription, composed in Sanskrit and Prakrit, engraved on an octagonal pillar found on the ground near the staircase leading to apsidal temple I (EIAD 104), and introduce one of the new inscriptions (EIAD 114) located and read by us. We acknowledge here the kind permission of the director of the Telangana State Department of Archaeology and Museums, Mrs. Visalatchi, for us to make and publish photographs of inscriptions in collections falling under her responsibility, notably at Phanigiri.

EIAD 104

The octagonal pillar bearing this inscription is kept in the archaeological store house in Phanigiri village (fig. 8). Essentially intact, lacking only the original crowning element, it measures approximately 354 cm in height, with an inscribed area just above its base covering three of the pillar’s eight facets in width and measuring 76 cm in height (fig. 9).⁵¹ It records the donation of a *cakra* (now lost, but presumably originally mounted on top of the pillar)⁵² during the 18th regnal year of the last known Ikṣvāku king Rudrapuruṣadatta. This

49. See for instance Skilling 2008.

50. They go on to say that of these “nearly 40 are label inscriptions,” but are clearly not using the term in the usual sense of an inscription labelling an element of narrative sculpture since they include in this number EIAD 104, to which we turn below.

51. This kind of pillar is rare at Ikṣvāku sites. For an example from Nagarjunakonda, see Rosen Stone 1994: 81, fig. 27.

52. We are not aware of any extant example of precisely such a pillar with wheel preserved, but a beautiful wheel without its original pillar is exhibited at the Archaeological Museum, Amaravati (acc. no. 63), while depictions of such pillars with wheel are not too rare: see, from Phanigiri itself, the representation shown by Skilling 2008: 112 (fig. 25) and, from Nagarjunakonda, the depiction on a drum slab (Rosen Stone 1994, fig. 124); see also the relief at the entrance to the *caitya* at Karla, in Western Maharashtra, discussed by Bénisti 1961: 264–265 (fig. 2).



Fig. 8 — Octagonal pillar from Phanigiri, its upper part at the bottom.

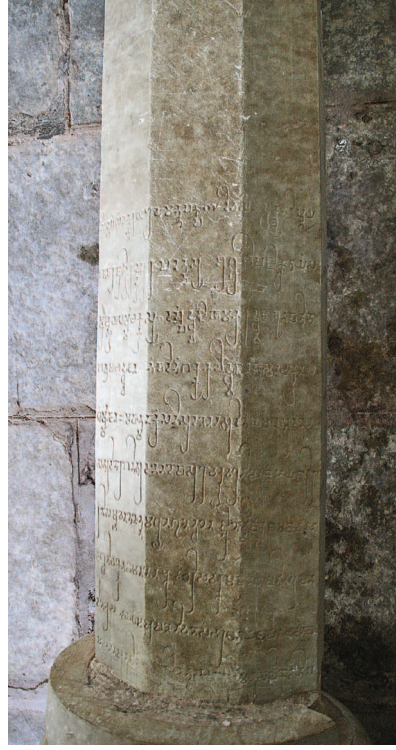


Fig. 9 — Inscribed part of the octagonal pillar from Phanigiri (EIAD 104).

is the latest known date of Rudrapuruṣadatta: previously Rudrapuruṣadatta's year 11, given in an inscription at Nagarjunakonda,⁵³ was considered the end of his reign, which by the discovery of the Phanigiri inscription is now extended a further seven years. The inscription has already been edited three times, and has already been frequently referred to in the literature.⁵⁴ This reflects the record's importance, not only for the chronology of the Ikṣvāku kings, but also for the cultural history of Buddhism and for current Indological debates on the status of Sanskrit vis-à-vis vernacular languages. Indeed, the apologetic tone of the record, praising the Buddha for having destroyed the three poisons in a way that also stresses his superiority over both Śiva and Viṣṇu/Kṛṣṇa, whose cults were favored by the Ikṣvāku kings, is quite remarkable, as noted by von Hinüber 2013b: 366–367. Such an apologetic stance is also clear from the very choice to include a versified portion in Sanskrit, a language that is used, in the Ikṣvāku corpus, primarily for donations to non-Buddhist gods, while the business portion of this Buddhist record is in Prakrit.⁵⁵

53. EIAD 83. See Sircar & Krishnan 1960–1961: 20–22; Raghunath 2001: 182–184, no. 64.

54. Munirathnam 2005, Ramesh & Munirathnam 2011–2012, Skilling & von Hinüber 2011 (with a correction in von Hinüber 2013b: 366), Schneider 2014: 17–18, Schneider 2015: 90 and Hartmann 2015: 538.

55. For two exceptions to this pattern, dating from the later part of the Ikṣvāku rule in Nagarjunakonda, see Sircar 1963–1964: 12–13, 17–18, nos. 4 & 7.A (EIAD 54 & 77). A third Buddhist

By appropriating the language of the other gods, so to speak, the Buddhist author of the Phanigiri poem skillfully positioned himself to attract the attention of those in power.

The exceptional nature of this record persuaded us to edit the inscription a fourth time when, upon close inspection of the original, it became clear that several improvements in the reading and interpretation could be offered. In what follows, we will begin by presenting our integral text and translation, and then discuss problematic passages and our solutions in line-by-line notes.

(1) siddham || samvatsaram 10 8 hemaṁtapakṣam 3 divasam 3

prakhyādiptaya(2)śaso rājña śrīrudrapuruṣadattasya ◊
°agrabhiṣajā kṛto yaṁ sa(3)mucchrayo dharmmacakkrasya 1

darppaddhvajo yo makaraddhvajasya
na pātito (4) govṛṣabhaddhvajena ◊
taṁ pāditaṁ śakkyakuloddhvajena
°imena cakkrena sa(5)dharmmajena 2

mahātmanā kaṁsanisūdanena
na sūdito yo madhusūdanena
(6) sa sūdito rāganisūdanena
doṣāsuro cakkravarenimena 3

māyāsarīrā(7)raṇisaṁmbhavana
tenottamadhyānaguṇendhanena ◊
jñānārcciṣā kleśamahāvanāni
(8) dagdh(ā)ni cakkrena °imena tena 4

taṁ °erisaṁ cakkam mahāsenapatisaramaṁ naṁ(9)dirṇṇakasa ◊ deyadharinmarin
°apaṇo nivāṇasaṁbharatha[tā]ya thāpitaṁ bhadaṁtadhe(10)masenena
°aṁnuthitaṁ ? ? [jāṇā]tu sa[dev]ā[s]u[ra]mānuso loko °iti ||

“Success! In the 18th year, in the 3rd fortnight of winter, on the 3rd day.

1. The chief physician of King Śrī-Rudrapuruṣadatta of well-known blazing fame carried out this erection of a Dharma wheel.

2. The banner of pride of the one with *makara* banner (= Kāma) that was not felled by the one with bull banner (= Śiva), that one has been felled by the descendant of the Śākya family by means of this wheel born from the excellent Dharma.

3. The demon of hatred that was not killed by the mighty killer of Kaṁsa (= Kṛṣṇa), killer of Madhu (= Viṣṇu), that one was killed by the killer of passion by means of this excellent wheel.

inscription in Sanskrit, perhaps datable to the reign of Rudrapuruṣadatta, is worthy of note (Ramachandran 1953: 28; EIAD 84). Similarly to EIAD 104, it concerns the erection of a free-standing pillar, according to our new reading *sa(ḍdharmmacakkravibhū)ṣitaddhvajasam[u]c(chra)[ya]* in ll. 7–8: “erection of a banner adorned with the wheel of the excellent Dharma.”

4. The great forests of defilements have been burned by him with the flame of knowledge that has the qualities of the highest *dhyāna*⁵⁶ as fuel and its origin in the fire stick that is the body of Māyā, by means of this very wheel.

May the world with gods, demons and men know ... that this wheel endowed with such qualities is a donation by Nandiṇṇaka in the pleasure-grove of the Great General, erected for the sake of bringing about his own *nirvāṇa*, and effected by the Venerable Dhammasena!”

The introductory part (opening and date) and the four stanzas of the inscription (lines 1 to the middle of line 8) are written in Sanskrit, the concluding part (the middle of line 8 to line 10) in Prakrit. The first stanza is in Āryā meter, the other three stanzas in Triṣṭubh meter (2–3 Upajāti, 4 Indravajrā). The Sanskrit deviates only subtly from the classical norms in a number of ways noted by previous editors: doubling of consonants before *y*, *r*, *v* and after *r*; irregular sandhi in *rājña śrī-* for *rājñas śrī-*, *doṣāsuro cakkra-* for *dveṣāsuras cakkra-*, *cakkravarenimena* and *cakkrena imena*. We may add *imena* instead of *anena* in the last two examples, the use of accusative instead of locative case in the dating formula (following the Prakrit convention) and the gender of *dhvaja* alternating between masculine and neuter. Those preparing the inscription appear to have made an effort to write class nasal plus stop in the Sanskrit part (sometimes preceded by additional anusvāra: 1 *hemaṁta-*, 7 *-saṁmbhavena*, *-endhanena*), but used anusvāra plus stop only in the Prakrit part (9 *-saṁbharatha[tā]ya*, *bhadamta-*). Occasional spelling mistakes are noted below.

1 10 8: The date is clearly year 18. It was so read by Munirathnam 2005 (M) and Ramesh & Muniratnam 2011–2012 (R&M). Skilling & von Hinüber 2011 (S&H) have 10 6,⁵⁷ but von Hinüber 2013b: 366 (H) reverted to the correct reading 10 8.⁵⁸ The historical implications of this reading are noted above.

1 *-dipta-*: So read by M, but S&H and R&M have *-dīpta-*. The reading seems certain, however, and should be treated as one of several very minor spelling mistakes from the point of view of classical Sanskrit. The integrity of the meter is not affected by short *i* in this word, which probably allowed it to persist through the production process of the text into the final inscription.

2 *rājña* for *rājñas*: So read by R&M. M and H read *rājño*, S&H *rājñ[o]*, but an ending *-o* would constitute incorrect sandhi. We therefore prefer to

56. We leave the word *dhyāna* untranslated since none of the many English equivalents satisfactorily conveys the traditional double meaning of this technical term expressed by Buddhaghosa in his *Visuddhimagga* (ed. Warren & Kosambi 1950, p. 121) as follows: *ārammaṇūpanijjhānato paccanīkajhāpanato vā jhānaṁ* “*dhyāna* (has its name alternatively) from reflecting on objects or from burning up enemies.” Our stanza draws simultaneously on both meanings: *uttamadhyāna* probably refers to the highest of the four levels of meditative absorption that set the ground for the Buddha’s Awakening, whereas the metaphorical frame of stanza 4 clearly builds on the meaning of *dhyāna* as fiery power obliterating enemies (similar to the non-Buddhist notion of *tapas*). It is interesting that the double meaning of the term, building as it does on the Middle Indo-Aryan phonetic merger of the roots *√dhyā* and *√kṣā*, remains operative in the incipient Sanskrit environment that our inscription reflects.

57. As did Skilling 2008: 97–98 in his initial report on Phanigiri, based on a visit in 2005.

58. We only discuss earlier readings in detail where the most recent edition (S&H with corrections in H) differs from our interpretation.

consider *rājñā śrī-* either a simplified spelling for the correct sandhi *rājñāś śrī-*, avoiding the three-part conjunct *śśr*, or a phonetic simplification.⁵⁹

4 *pāditam*. The reading is clear, but lexically we expect *pātita-*, as in the preceding pāda. Skilling & von Hinüber 2011: 9 suggest that the confusion of *t* and *d* may betray a Dravidian background of the engraver (or rather original scribe) of the inscription. While this is possible, we consider a Middle Indo-Aryan source of the confusion equally likely since intervocalic Old Indo-Aryan [t] and [d] had begun to merge into [ḍ] well before the time of our inscription.

4 *śakkyakuloddhvajena*: So read by M and R&M, and after inspection of the original stone there can be no doubt that this reading is correct (fig. 10). This rules out S&H's interpretation, based on the reading *kuledhvajjēna* (Skilling & von Hinüber 2011: 9, n. 5), in terms of a learned compound with inflected prior member (*aluksamāsa*). We would like to propose a tentative alternative interpretation

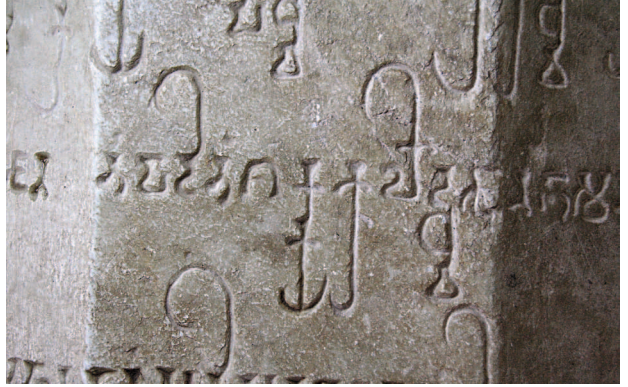


Fig. 10 — Close-up of the middle portion of line 4 of EIAD 104.

of *śakkyakuloddhvajena* as *śakkyakulo(r)ddhvajena* “scion of the Śākya family,” with omitted *r* in *-ūrdhvaja-*, either as accidental Prakritism (note *śakkyā-* for *śākya-* in the same word) or as intentional “imprecise spelling” in the Sanskrit-Prakrit grey area that was meant to bring the word in question closer to the instances of *-ddhvaja-* “banner” in this stanza and create a punning relationship (*śleṣa*) with them. A meaning “later” for *ūrdhva* is well-attested, making the interpretation of *ūrdhvaja* as “born later, scion” at least possible. The dictionaries do not appear to list this meaning for the compound, but MW s.v. “being higher, upper” and PTSD s.v. *uddhaja* “upright, honest ... (v.l. for *pannadhaja*)” at least show the possible semantic breadth of the compound. A third, less involved, interpretation, would be to take *śakkyakulo* simply as prior member of a compound with *o* instead of *a*, but while such compound spellings are well-attested in Gāndhārī (e.g., *acaliobhava-*, cf. Baums 2009: 236), we have no reason to expect them in our inscription.

4–5 *sadharmmajena*: M and S&H initially read *sa dharmmajena* as two words, but both editors later corrected themselves to R&M and H *sadharmmajena*. It would indeed be hard to construe independent *sa*, presumably as nominative singular masculine of the demonstrative pronoun, in the sentence in question. The problem would be not only that the referent *darppadhvaḥ* *yo* is already picked up by *tam* – see 8 *imena tena* for another case of pleonastic pronouns – but that the two pronouns in question here would be far apart from each other and disagree in their apparent gender and/or case (neuter

59. Cf. Wackernagel 1896: 342–343 (§ 287c).

nominative or masculine/neuter accusative *taṃ* vs. masculine nominative *sa*). Reading *sadharmmajena*, one is immediately tempted to understand *sa(d)-dharmmajena*, “born from the excellent Dharma” (cf. n. 55). But this is complicated by the constraints of the meter which requires the first syllable of the word to be short. The composer may thus have intentionally resorted to the “imprecise” orthography with *dha*, since this commonly stands for *ddha* in the corpus of Prakrit inscriptions (see, e.g., *supabudha-* in EIAD 19, l. 1, below p. 383). The only possible alternative is to interpret *sa-* as “together with” and translate “this wheel born together with the Dharma,” the solution also adopted by von Hinüber 2013b: 366. The intended meaning would then be that the Dharma and its symbol the wheel originated at the same time when the Dharma was first promulgated (the *dharmacakrapravartana*).

6–7 *māyāśarīrāraṇisaṃmbhavana*: So read by R&M and, in the slight variant *māyāśarīrāraṇisaṃmbhavana*, by S&H. The original reading in M was *māyāśarīrāraṇiṃ saṃmbhavana*, but both absence of anusvāra and retroflex nasal in *-āraṇi-* are clear. We think we can offer a significant improvement in the interpretation of the imagery expressed by this word. Skilling & von Hinüber 2011: 8 translated the entire phrase *māyāśarīrāraṇisaṃmbhavana tenottamadyānaḡendhanena jñāṇārcciṣā* as “by the spark which is insight, (the spark) that arose from the kindling wood which is his magic (illusory?) body, by this fire wood which is virtue, the deepest meditation.” They go on to suggest that the term *māyāśarīra*, which they concede to be unattested elsewhere, might either be a general reference to the insubstantial nature of the Buddha’s physical body or even refer directly to the buddhological concept of the *nirmāṇakāya*. There is a syntactic problem with their interpretation in that *māyāśarīrāraṇisaṃmbhavana* and *tenottamadyānaḡendhanena* are both very likely to be attributes of *jñāṇārcciṣā*, not only because of their position preceding *jñāṇārcciṣā* but also because in the real world the production of fire required both firesticks and fuel. A less problematic interpretation of *māyāśarīrāraṇi-* suggests itself if we simply take *māyā* to be the name of the Buddha’s physical mother Māyā and remember that *araṇi* “(lower) firestick” is a common metaphorical expression for a mother with reference to the process of sexual intercourse and conception (MW s.v.). The overall phrase would then amount to a perfectly balanced comparison of the Buddha’s knowledge (*jñāna*) as arising from the physical condition of his birth from his mother Māyā’s body (*māyāśarīra*) and the further condition of his highest meditative absorption (*uttamadyāna*), with a flame (*arcis*) arising from the combination of firestick (*araṇi*) and fuel (*indhana*). The mention of the Buddha’s mother Māyā in stanza 4 further provides a link with the specification of his paternal ancestry as the Śākya family in stanza 2, neatly bracketing the three Triṣṭubh stanzas describing the Buddha and his accomplishments. The archeological context of the pillar would have contributed to bringing the Buddha’s mother to the mind of a learned reader of this inscription since the pillar appears to have been established in proximity to a majestic *torana* in the decorative

program of which the birth of Śākyamuni features prominently.⁶⁰ We cannot entirely rule out that a learned double entendre was intended by the composer of the verse by using the compound *māyāśarīra*. We know that the docetic buddhology set forth, for instance, in the *Lokānuvartanāsūtra*, was current among the Śāila schools of Āndhradeśa, at least by the time of Candrakīrti (ca. 600–650), but possibly earlier.⁶¹ At the moment, however, we do not know which monastic lineage(s) were present in Phanigiri. In the absence of any supporting evidence from the site that would suggest that religious figures such as Dhammasena might have been familiar with such docetic trends, we consider it preferable to adopt the simpler interpretation of this compound.

8 *dagdh(ā)ni*: M read *dagdhāni*, R&M similarly *da[gdhā]ni* and S&H *dagdh[ā]ni*. There does not, however, seem to be a length mark on the second akṣara, and we prefer to treat this as an orthographic slip.

8 *taṁ °erisaṁ*: M and R&M read *taṁ varisaṁ* without explanation. S&H read *taṁdharisaṁ* and translated “which accompanies [the pillar],” but it is unclear to us how their translation follows from their reading. Presumably *-dharisaṁ* would somehow be derived from the root *dhṛ* “to hold,” but in fact it is the pillar that holds the *cakra* rather than vice versa. On closer inspection of the original stone, however, it seems clear to us that the second

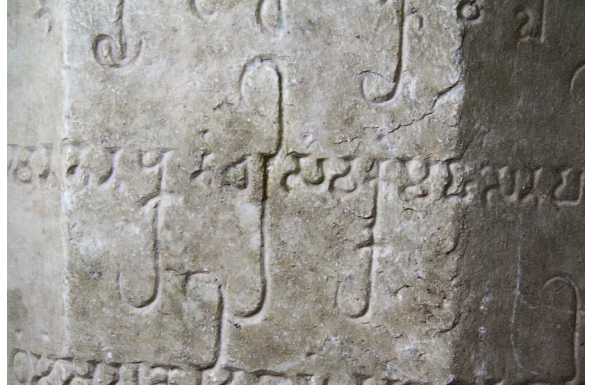


Fig. 11 — Close-up of the middle portion of line 8 of EIAD 104.

akṣara is °e rather than *dha* (fig. 11). This suggests an interpretation as two words, the second of which corresponds to Old Indo-Aryan *īdṛśa* “such a one,” i.e., a *cakra* exactly as just described in the four Sanskrit stanzas. Middle Indo-Aryan forms of this word with *r* are common (cf. CDIAL s.v. *īdṛśa*), but in light of the general closeness of the Ikṣvāku Prakrit inscriptions to Pali it is interesting to note that the normal Pali form is *edisa* with *d*.

8–9 *mahāsenapatisaramaṇaṁ naṁdimṇakasa*: M read *mahāsenapati saramenaṁ diṇokasa* and R&M *mahāsenapati saramenaṁdiṇakasa*. While both of these readings correctly recognized the presence of a Great General, they remained syntactically incoherent. S&H healed the syntactic problem with their reading *mahāsenapatisa ramanāṁdinokasa*, but were left with a problem of two donors that they described as follows: “The general

60. Cf. Skilling 2008: 102–103 and fig. 11. The same relief is also reproduced on the reverse of the cover of Subrahmanyam *et al.* 2008.

61. As shown by Harrison (1982), an echo of this influential and early sūtra of the Bodhisattvayāna may be found in Nāgārjuna’s *Nirāupamyastava*, while Candrakīrti cites verses from this scripture, in Prakrit, which he identifies as the Āgama of the Pūrvaśailas. On the issue of the integration of this scripture in the canons of the Mahāsāṃghikas, see Tournier 2017: 278–286. For quotations and echoes of this sūtra in the *Mahāparinirvāṇa-Mahāsūtra*, yet another scripture possibly connected with Āndhradeśa, see Radich 2015: 53, n. 109.

Ramaṇaṃdinoka donated the *cakra* to be raised and put on a pillar erected by the physician.” They had noted earlier: “Strangely enough, the physician does not mention his name. This, however, is perhaps again due to the metre.”⁶² We may add as a third problem, not addressed by Skilling & von Hinüber, that the place or institutional recipient of the donation would not be mentioned. It seems to us that all of these problems can be solved by dividing words as we do and assuming vowel sandhi in *mahāsenapatisarame* (= *mahāsenapatisa arame*)⁶³ which then specifies the institutional recipient of the donation as the pleasure-grove of the Great General. The title *mahāsenāpati* figures very prominently in the Ikṣvāku inscriptions from Nagarjunakonda where it is applied to members of the royal house. This in turn makes it possible to interpret *naṃdiṃṇakasa* as the name of the heretofore nameless physician, who was then the donor of both the *cakra* and, secondarily, the pillar on which the *cakra* was mounted (as indeed specified in stanza 1). Following the usual pattern in the Ikṣvāku corpus, his Indo-Aryan name Nandi is extended by a suffix *-innaka-*.



Fig. 12 — Close-up of the end of line 9 of EIAD 104.

9 *nivāṇasambharatha[tā]ya*:
M read *ni vato sam bharadha[to]-*
ya, a reading improved into *nivane*
sambharathatāya in R&M; S&H
read *nivāṇasambharathatāyā*,
misinterpreting the serif of the
last syllable (fig. 12) as the
vocalic marker *-ā*. When dis-
cussing the compound (p. 11),
S&H do provide the correct read-
ing *-athatāya*, with the expected
dat. sing. fem. ending. Compounds
including *nivāṇa* and *athanā*
(Skt. *arhanā*) commonly occur in

the Āndhradeśa corpus (see, e.g., below, p. 383). It is therefore tempting to consider the variant *athatā-* here as a mistake of the engraver, even if it can be accounted for as an abstract in *-tā* of *atha*.

9–10 *bhadam̐tadhemasenena*: M, R&M read *bhadam̐ta dhemasenena*, S&H *bhadanta [be]masenena*. The first word clearly uses anusvāra instead of class nasal (fig. 12), as throughout the Prakrit portion of this inscription (see above). The name of the venerable monastic representing his institution at the donation was in all likelihood Dhammasena, with the apparent *e* mātrā in our inscription as a misspelling for anusvāra. The name Dhammasena is known from another Phanigiri inscription (EIAD 105, edited in von Hinüber 2012 and 2013a), though it remains unclear whether both refer to the same person.

62. Skilling & von Hinüber 2011: 10–11.

63. We cannot cite precisely analogous cases of this sandhi in our corpus. But it would be entirely unsuspicious in literary Pali, and this is a decidedly literary inscription. Note *sammāsambudhaseti* in EIAD 29 cited below.

10 *[jāṇā]tu*: M and R&M refrain from any reading in this part of the inscription, while S&H read .i ? ?. On close inspection (fig. 13) we are fairly certain of our reading proposed here, in which the special form of the *ā* mātrā attached to *[jā]* was misinterpreted by S&H as their *i* mātrā. The imperative third-person singular verb turns everything that precedes it in the concluding formula into a dependent participial clause.

10 *sa[dev]ā[s]u[ra]mānuso loko*: M read *[sana]* ... *mānusalaka*, R&M more cautiously ... *mānuso loko* and S&H *[sa]* ? ? ? ? *mānuso loko*. After inspection of the original stone (fig. 14), the reading proposed here – a known expression in Buddhist sources⁶⁴ – seems very likely and provides the subject for the concluding sentence governed by *[jāṇā]tu*.



Fig. 13 — Close-up of the middle portion of line 10 of EIAD 104.



Fig. 14 — Close-up of the end of line 10 of EIAD 104.

EIAD 114

This is engraved on an *āyaka* pillar of which only a lower fragment has been recovered. It is currently mounted on the western *āyaka* platform of the heavily restored Great Caitya. We are unable to ascertain whether this was the original location of the pillar. The pillar fragment is 31.5 cm wide, and the original width of the piece appears to have been only slightly greater (fig. 15). The fragment contains the last two lines of a donative inscription very similar in script to a Nagarjunakonda inscription dating from year 6 of the reign of the Sātavāhana king Gotamīputa Siri-Vijayasātakanni that is the earliest dated inscription found at that site.⁶⁵ The present inscription may likewise belong to the pre-Ikṣvāku period. Each line is cut off in the middle of the last akṣara, and only traces remain of the third line from the bottom. To our knowledge, this inscription has not been previously published, and we present here our original reading and interpretation. The extant lines are exceptionally well

64. E.g., *Mahāvastu* (ed. Senart 1882–1897) II 232.20 *vismayaṁ loka āpanno sadevāsura mānuṣo* and the Gāndhārī **Manasvināgarājasūtra* (ed. Strauch 2014: 74; CKM 266 in Baums & Glass ongoing) *maṇaspīo ca ṇagarayo sadevamanuṣaṣaro* ? +.

65. EIAD 1. See Sarkar 1965–1966: 273–274; Raghunath 2001: 67 (no. 1); Nagarjunakonda Museum, acc. no. 79.



Fig. 15 — Inscribed āyaka pillar from Phanigiri, after reconstruction (EIAD 114).

preserved and can be confidently transcribed and translated as follows:

(1) ++ ? ? + ? ///

(2) gahapatikasa tummakasa
bhayaya budhaṇṇikā[ya]

(3) deyadhammaṇ bhaga-
vato mahāpugalasa [ti]

“(...) Meritorious gift to the Bhagavant, the Great Man, by Budhaṇṇikā, wife of the householder Tummaka.”

The name of the donor shows a typical regional suffix (-*aṇṇikā*-). This can be related to the masculine suffix -*innaka*, that we encountered in the name of the donor of the previous inscription (Nandinna). In the present one it is apparently attached to the Indo-Aryan base Buddhā. The etymology of the name of Budhaṇṇikā's husband Tummaka remains obscure. Also as in Phanigiri inscription EIAD 104, we have here the term *deyadhamma* used to

designate the donated object, and both inscriptions likewise end in the quotative particle *ti*. The term *mahāpugala* is, as far as we can see, only used here in the epigraphic corpus of early Āndhradeśa; it can be compared, however, to °*agapogala* “Highest Man,” found in two Nagarjunakonda inscriptions.⁶⁶ Only the indistinct descenders of three akṣaras are preserved in our line 1, providing no hint what the preceding part of the inscription may have contained. Judging from EIAD 104 discussed above, and from the formulaic repertoire of the Āndhra corpus and Buddhist donative inscriptions in general, we would have expected a date, a specification of the object that constitutes the donation, a location, and possibly also an institutional recipient. The last in particular would have been very welcome since none of the Phanigiri inscriptions available to us so far contain the name of the local Buddhist school. As more of the Phanigiri corpus is published, and possibly also additional discoveries are made, we hope that light will eventually be cast also on this and other aspects of the local history of this important Buddhist site.

66. EIAD 1 (see preceding note) and 80 (Vogel 1929–1930a: 25).

An *āyaka* pillar inscription from the Great Caitya at Nagarjunakonda and the interpretation of the term *dhātuvaraparigahita*

The remaining remarks of this report will focus on the group of *āyaka* pillars of the Great Caitya established under the sponsorship of a close-knit group of donors led by Cāntisirī. This figure was the uterine sister of king Vāsiṭhīputa Siri-Cāntamūla, the wife of dignitary Vāsiṭhīputa Kandasirī, and became, between the 6th and the 18th regnal year of Siri-Vīrapurisadata, this king's mother-in-law. She is recorded as primary donor for twelve inscriptions of this group, and is systematically mentioned even in those cases where she is not herself the donor. In total, the remains of as many as eighteen out of the original set of twenty *āyaka* pillars that would have surrounded the Great Caitya have been recovered during excavations, and all of them are inscribed. Vogel knew of seventeen *āyaka* pillars recovered from this site, being unaware of EIAD 11, published for the first time by Raghunath.⁶⁷ There remain to this day three unpublished inscriptions of this series, to which we have assigned the numbers EIAD 16, 19 and 41.⁶⁸

This group of inscriptions within the Nagarjunakonda corpus contains closely related texts: all contain the exact same date and record donations either by Cāntisirī or by one of her associates. The serial nature of these inscriptions calls for a systematic comparison of their texts, in order to assess formulaic fluctuations and to better determine the meaning of several difficult words. As a contribution to that end, we present here our edition of the best preserved among the three unpublished pillar inscriptions (EIAD 19): this will lead us to revisit the interpretation of a much-debated epithet of the Buddha, namely *dhātuvaraparigahita*.



Fig. 16 — Three large fragments of *āyaka* pillars in the main storage at Nagarjunakonda. The one closest to the wooden cases is NM 298, bearing small parts of EIAD 19.

67. Raghunath 2001: 85–86, no. 8A.

68. These three unpublished inscriptions were known to Vogel, and correspond respectively to nos. A2, A4, and D3 in his list of inscriptions (Vogel 1929–1930a: 13–14).

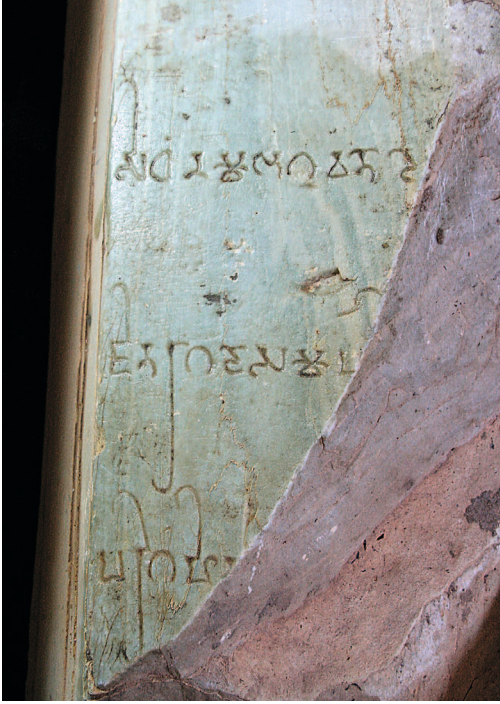


Fig. 18 — Close-up of the last akṣara of line 1 of EIAD 19.

Fig. 17 — Close-up of the leftmost akṣaras of lines 1–3 of EIAD 19.

The inscription edited here is preserved in three separate fragments of a single pillar. The first fragment, bearing accession number NM 289, is kept in the main storage of the site museum (fig. 16): it is a fragment from the upper part of the pillar, bearing the left part of the first three lines as well as the rightmost akṣara of the first line (figs. 17 and 18). The second fragment (NM 678), likewise kept in the main storage of the site museum, contains most of the first four lines, and a part of the fifth (fig. 19). A third fragment, without accession number known to us, is currently accessible on the southern *āyaka* platform of the reconstructed Great Caitya on the island in Nagarjuna Sagar.⁶⁹ it contains parts of the fifth line, and lines 6 to 11 (figs. 20 and 21). Between 1926 and 1928, three estampage sheets were prepared for these fragments and sent to Jean Philippe Vogel, then professor of Sanskrit at Leiden University, where they are still preserved as part of collections of the Kern Institute at the University Library, under *abklatsch* number N15 (fig. 22).⁷⁰ Vogel decided not to publish a separate edition of this inscription, but instead to record variant readings of this and other inscriptions in the critical apparatus of his edition of another inscription.⁷¹ Our edition of the inscription was prepared on the combined basis of the Leiden estampages and of digital photographs that we took on site.

69. This placement appears to be historically incorrect: if we may rely on Vogel's list cited in the preceding footnote, the original location of pillar A4 was on the eastern platform.

70. These three sheets bear the numbers IV-4-c/b/a. We have not yet determined what numbering system these refer to.

71. Vogel 1929–1930a: 15–17, no. C3 (EIAD 4).



Fig. 19 — Fragment NM 678 of the āyaka pillar bearing EIAD 19.



Fig. 20 — Lower part of the āyaka pillar bearing EIAD 19 at reconstructed stūpa.



Fig. 21 — Lower part of the āyaka pillar bearing EIAD 19 at reconstructed stūpa.

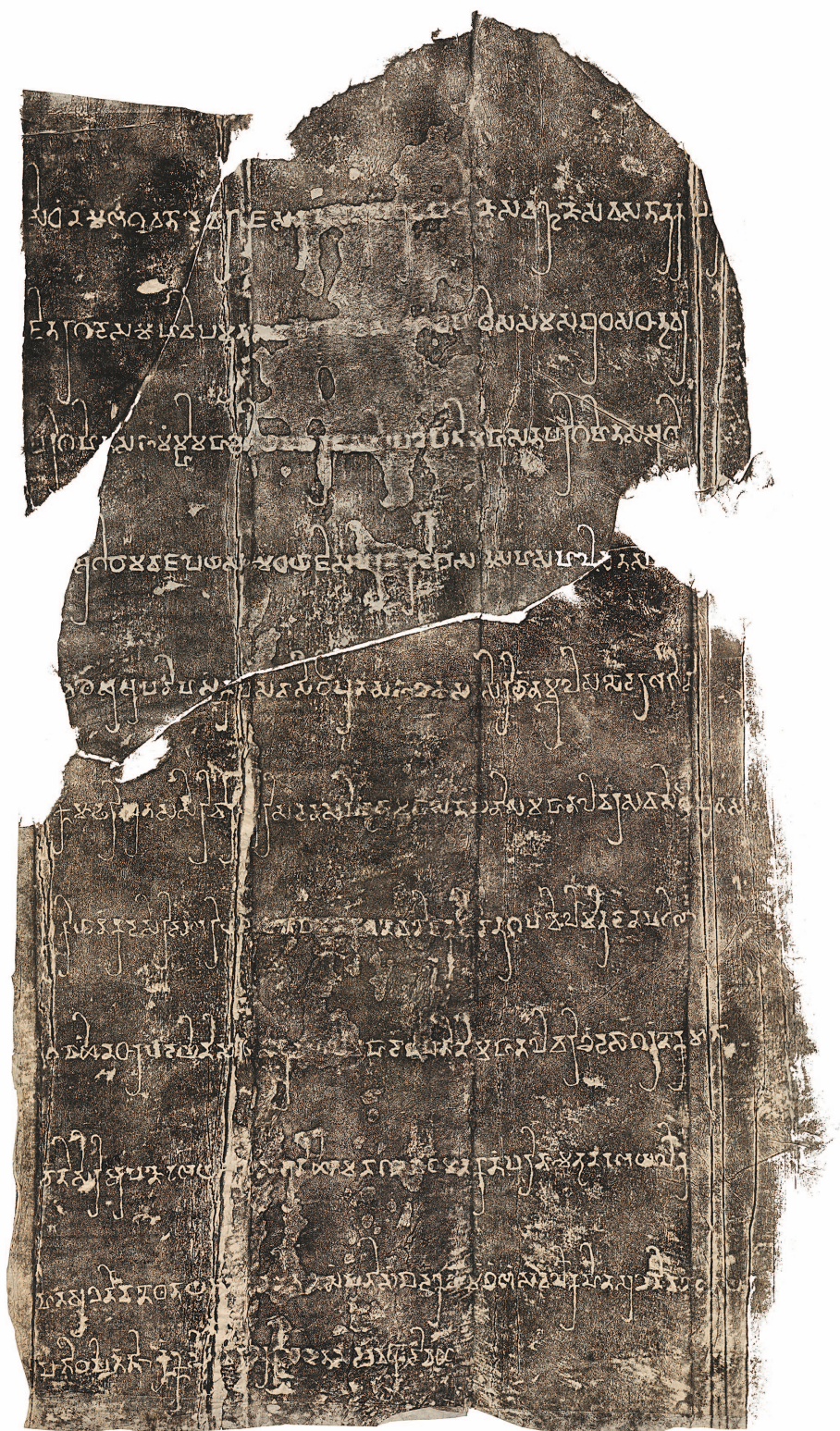


Fig. 22 — Three estampage sheets for EIAD 19 preserved at Leiden assembled in one photo.

EIAD 19

(1) sidham namo bhagavato devarājasakatasa supabudhabodhino⁷² savamñu-
no savasatānukampa[ka]sa (2) jitarāgadosamohavipamutasa mahāgaṇi-
vasabhagamdhahathisa saṁmasaṁbudhasa dhātuvara(3)parigahitasa
°imamñhi mahācetiye mahārajasa virūpakhapatimahāsenaparigahitasa °agi-
(4)(hota)°agiṭhomavājapeyāsamedhayājisa hiraṁṇakoṭigosatasahasahala-
satasa(hasapadāyisa)⁷³ (5) (sa)vathesu °apatiha(ta)samkapasa vāsiṭhīputasa
°ikhākusa siricāmtamūlasa sodarā bhagini (6) [ra](m)ño māḍhariputasa
sirivira[pu]risadatasa pituchā mahāsenāpatisa mahātalavarasa vāsiṭhīputasa
(7) pūkiyānam kadasirisa bhariyā samaṇabamhaṇakavaṇavaṇijjakadīnānu-
gahavailāmikadānapaṭibhā(8)gavochinadhārapadāyini savasādhuvachalā
mahādānapatini mahātalavari khamdasāgaramṇakamātā (9) cāntisiri °apano
°ubhayakulasa °atichita-m-anāgatavaṭamānakānam parināmetuna °ubhaya-
loka(10)hitasukhanivāṇathanāya °atano ca nivāṇasaṁpatisaṁpādake⁷⁴ °imam
khambham savalokahitasukhanivāṇathanāya ca (11) patithapitam ti – ramño
si[r]iv[i]rapurisadatasa samva 6 (vāpa 6) diva 10

“Success! Homage to the Bhagavant, worshipped by the king(s) of the gods, who completely realized Awakening, the Omniscient One, who is compassionate towards all beings, who conquered and is released from lust, hatred and delusion, the bull and rut elephant among great leaders, the Perfect Buddha who is *dhātuvaraparigahita*! At this Great Shrine, Cāntisiri – uterine sister of Great King Vāsiṭhīputa Siri-Cāntamūla the Ikṣvāku, favored by Mahāsenā who has Virūpākṣa as his lord, sacrificer of the Agnihotra, the Agniṣṭoma, the Vājapeya and the Aśvamedha, giver of tens of millions of (pieces of) gold, hundreds of thousands of cows and hundreds of thousands of plows (of land), whose will is unimpeded in all matters; paternal aunt of King Mātharīputa Siri-Vīrapurisadata; wife of Great General, Great Talavara Vāsiṭhīputa Kandasiri of the Pūkiyas; giver of an unequalled and uninterrupted stream of *velāmika*⁷⁵

72. This precise compound does not appear to be otherwise attested in Pali, Gāndhārī or Sanskrit literature. The only attested syntagm consisting of *suprabuddha-* + *√budh* appears to occur in the set of verses found in *Dhammapada* (ed. von Hinüber & Norman 1995) 296–301 *supabuddham pabujjhanti*, *Khotan Dharmapada* (ed. Brough 1962; CKM 77 in Baums & Glass ongoing) 100–105 *supra°udhu pra°ujjati*, *Udānavarga* (ed. Bernhard 1965–1968) 15.2–26 *suprabuddham prabudhyante* and *Patna Dharmapada* (ed. Cone 1989) 241–243 *suprabuddham pabujjhanti*.

73. This reconstruction, based on the parallels, assumes that this line continued over the fourth facet of the pillar, and that, similarly to line 6, three akṣaras were written on that facet.

74. As far as we are aware, the term *nibbānasampatti* is only attested in Pali literature. In the *Khuddakapāṭha* (ed. Smith 1915) 7, stanza 13, and later in the *aṭṭhakathās*, it commonly occurs as part of a triad, together with *manussasampatti* and *dibbasampatti*.

75. As already suggested by Vogel (1929–1930a: 33), this epithet appears to point to the brahmin Velāma, identified as a former rebirth of Śākyamuni, who is commonly invoked in Buddhist texts as an archetype of generosity. His numerous gifts, already listed in a story of the past embedded in the *Velāmasutta* of the *Ānguttaranikāya*, “seemed to be flowing like rivers” (*najjo maññe vissandati*; AN IV 393.16–394.7). In a retelling of this passage in the *Khadiraṅgārājātaka*, the Buddha says he has given away the seven jewels, when born as Velāma, “as if making into one stream the five great rivers” (*pañca mahānadiyo ekoghapuṇṇam katvā viya*; Ja I 228.18–24). The characterization of this meritorious deed – also known as *Velāmamahāyaṇā* – as a continuous stream is clearly echoed in the description of Cāntisiri. The hypothesis that a version of the Velāma story circulated in Āndhradeśa is moreover strengthened by the fact that a narrative panel bearing the label *jātaka*

gifts as a favor to ascetics, brahmans, beggars, mendicants and the wretched; affectionate to all good people; great donor; Great-Talavara-wife, mother of Khandasāgarāṇṇaka – having dedicated (the merit) to the past, future and present members of her family on both sides, established this pillar for the sake of well-being and happiness in both worlds and of *nirvāṇa*, and for achieving the fortune of *nirvāṇa* for herself, for the sake of the well-being, happiness and *nirvāṇa* of all people. In the 6th year of King Siri-Vīrapurisadata, in the 6th fortnight of the rainy season, on the 10th day.”

Vogel proposed to take the whole string of epithets of the Buddha, opening the inscription, as being governed by *namo* and, under the influence of Louis de La Vallée Poussin, translated the last epithet, *dhātuvaraparigahitasa*, as “absorbed by the best of elements, *i.e.*, by *nirvāṇa*.” Hirananda Sastri, the editor of the *Epigraphia Indica* volume in which Vogel’s contribution appeared, was tempted to take it as qualifying *mahācetiye*, and freely translated “protected by the corporeal remains of the Buddha.”⁷⁶ The issue was eventually revisited by Gregory Schopen who in 1988 dedicated a whole article to the understanding of this epithet. Schopen identified two problems in its interpretation: a syntactic one, whether *dhātuvaraparigahitasa* is governed by *namo* or by *mahācetiye*; and a semantic one: what is the referent of *dhātuvara*? Schopen argued elaborately in favor of the interpretation of the problematic epithet as forming a syntactic unit with the preceding *sammāsambudhasa* and the following *mahācetiye*, and consequently translated as follows: “At the Great Shrine of the Perfectly Enlightened One who is enclosed within the most excellent relic.”⁷⁷

Let us reconsider briefly both the syntactic and the semantic arguments put forward by Schopen. First, the present edition of the EIAD 19 puts into perspective the following statement by Schopen, in favor of the interpretation that *mahācetiye* governs *dhātuvaraparigahitasa*.⁷⁸

although almost all of the Nāgārjunikoṇḍa inscriptions open with or contain a *namo* invocation consisting of strings of *different* epithets of the Buddha, the collocation *sammāsambudhasa dhātuvaraparigahitasa* occurs *only* in inscriptions that make reference to the *mahācetiya* and *always* immediately precedes the noun *mahācetiya* in the locative.

This last statement is clearly erroneous, since the text of EIAD 19 and of three other pillar inscriptions (EIAD 14, 17 and 18) insert the pronoun *ima(m)mhi* before *mahācetiye*.⁷⁹ This version of the formula, preserved in four out of the fourteen inscriptions of the set that preserve the phrase in the beginning of the text, establishes a clear syntactic break between the open-

velamiya was found in Kanaganahalli (Nakanishi & von Hinüber 2014: 87, no. III.1, 5; von Hinüber 2016: 12). On the *Velāmajātaka*, see also, in an earlier volume of this *Bulletin*, Terral-Martini 1959.

76. Cf. Vogel 1929–1930a: 29, with n. 1.

77. Schopen 1988: 535.

78. Schopen 1988: 529 (the italics are present in the original; the underlining marks our emphasis).

79. See respectively Raghunath 2001: 95–96, no. 10A; 97–98, no. 10B (erroneously reproduced as a separate inscription, pp. 101–102, no. 10D); 99–100, no. 10C.

ing invocation and the ensuing statement of location. The four instances of the pronoun moreover all feature on pillars dedicated by Cāntisirī, the main donor of the *mahācetiya*. It is impossible to know with certainty which version of the formula – with or without *ima(m)mhi* – might have stood in the master copy of this group of pillar inscriptions. Nevertheless, considering the fact that the majority of inscriptions do not include the pronoun, it is not unreasonable to suppose that it was added by one of the agents involved in the process of copying the text onto stone, and hence to consider it an addition, aiming at clarifying a syntactic ambiguity. While none of the four inscriptions preserving the pronoun were separately published at the time Schopen wrote in 1988, Vogel had in fact duly recorded the variants of all four records in the apparatus to his edition of inscription C3 (EIAD 4); his translation of that record was also probably informed by his assessment of the variants at hand.⁸⁰ By contrast, the alternative interpretations of the syntax suggested by Sastri and, after him, by Schopen, appear to have overlooked the apparatus carefully compiled by the Dutch scholar.

A look at opening invocations addressed to the Buddha in the Nagarjuna-konda corpus shows that *saṃmāsambudhasa* frequently occurs towards the end of a string of epithets. EIAD 29 makes this particularly clear, as it opens with *namo bhagavato savasatotamasa saṃmāsambudhaseti*, where the quotative particle *iti* neatly marks the transition between the invocation and the central part of the record.⁸¹ Given this parallel, *saṃmāsambudhasa* is most naturally taken to have stood at the end of the invocations included in the *āyaka* pillars, and Schopen's assumption of a separation between the preceding epithets in the genitive singular and this one appears to be artificial. To us it seems most likely that, as in EIAD 29, both *saṃmāsambudhasa* and *dhātuvaraparigahitasa* agree with the initial *bhagavato*. These three epithets are inseparably connected in three further records, two pillar inscriptions from the Great Caitya, and one slab inscription found in the apsidal temple (*cetiyaḥara*) founded by Cāntisirī to the east of the main shrine. The two pillar inscriptions (Vogel X and B2, EIAD 13 and 15) are the only ones of the eighteen pillars not to contain an opening invocation of the Buddha: after *sidham*, the records open directly with a phrase depicting the donor – respectively Cāntisirī and Aḍavi-Cāntisirī, sister of the ruling king. Only later on, apparently as an afterthought, the location of the gift is made explicit in these terms:⁸²

bhagavato saṃmasambudhasa dhātuvaraparigahitasa mahācetiyaṃhi

“...at the Great Shrine of the Bhagavant, the Perfect Buddha who is
dhātuvaraparigahita...”

80. Vogel 1929–1930a: 16, n. 3.

81. For other instances in which (*saṃmāsaṃ*)*budhasa* appears in conclusion of an invocation, with recapitulative force, see EIAD 20, 44–46 and 51. These inscriptions are Vogel 1929–1930a: 22–24 (F, G, H); Vogel 1931–1932: 62–63 (G2 and G3); Raghunath 2001, nos. 11, 27–29 and 34.

82. Variant readings from EIAD 13, l. 8 (Vogel 1929–1930a: 14, item X; Raghunath 2001: 89, no. 9A) and EIAD 15, l. 6 (Vogel 1929–1930a: 13 and 18, item B2; Raghunath 2001: 93, no. 10): *-sambudhasa*] EIAD 13; *-sabudhasa* EIAD 15 • *dhātuvara-*] EIAD 15; *thātuvara-* EIAD 13 • *mahācetiyaṃhi*] EIAD 13; *mahācetiye* EIAD 15.

The slab inscription (Vogel E, EIAD 28) opens with a short invocation to the Buddha, before locating the gift in the apsidal temple instead of the Great Caitya.⁸³ Later on, in recording the dedication of a stone pavilion, the gift is located “at the foot (*pādamūla*) of the Great Shrine of the Bhagavant, the Perfect Buddha who is *dhātuparigahita*.”⁸⁴ Schopen cites the two inscriptions known to him as confirmation of his interpretation of the syntax of the common formula. But the evidence may just as well be interpreted to the contrary, as an indication of the fact that *bhagavato*, *saṃmasambudhasa*, and *dhātu(vara)parigahitasa* should, in all occurrences, be taken together. It is significant that the least elaborate version of the opening invocation of the Buddha among the pillar inscriptions of the Great Caitya opens precisely with the same three epithets – and these only – in four pillar inscriptions.⁸⁵ It would be highly problematic to translate these instances in any other way than “Homage to the Bhagavant, the Perfect Buddha who is *dhātuvaraparigahita*!”

Having clarified the syntax of the formula, we can now turn to the problem of the meaning and referent of the problematic compound. First, it should be stressed that *dhātuvaraparigahita* is not the only compound formed with *parigahita* (var. *parigahīta*, Skt. *parighīta*) in this group of inscriptions. Most importantly, the compound *virūpakhapatimahāsenaparigahita* features prominently among the epithets of the *mahārāja* Siri-Cāntamūla. In EIAD 19, as in all inscriptions dedicated by Cāntisiri at the Great Caitya and which include any epithets of this king, the two compounds ending in *parigahita* occur in close vicinity, and should thus, if possible, be interpreted together.⁸⁶ The interpretation of *mahāsenaparigahita* has been revisited recently by Richard Mann who, following a suggestion of his teacher Phyllis Granoff, proposed to translate the compound as “the one favoured (*parighīta*) by Mahāsenā, who has the one with deformed eyes (*virūpākṣa*) as his lord,” seeing in Virūpākṣa a possible reference to Śiva.⁸⁷ It should be noted, though,

83. Cf. EIAD 28, l. 1 (Vogel 1929–1930a: 21): *namo bhagavato ḍ budhasa cetiyaghara mahārāja[sa v]irūpakhapatimahāsenaparigahitasa...* . By contrast with Vogel who took *cetiyaghara* as a nominative singular, we follow here the suggestion of Sircar (1942: 227 n. 2; 1965: 236 n. 3) in interpreting it as a mistake for *cetiyaghare*. This is supported by the similarity of construction with the pillar inscriptions, where *mahācetiye* opens the main sentence after the opening invocation. Other inscriptions found in the ruins of the apsidal temple site contain similar texts, but they are all damaged and are of no assistance in this matter. Cf. EIAD 24–27 (Sarkar 1969: 176–177); EIAD 39 (Vogel 1931–1932: 66–69, no. M2 + M9).

84. Cf. EIAD 28, l. 2 (Vogel 1929–1930: 21): *bhagavato saṃmasa[n]budhasa dhātuparigahitasa ma(hā)cetiypādamūle*.

85. Cf. EIAD 7 (Vogel 1929–1930: 20–21, item C5); EIAD 14 (Raghunath 2001: 95–96, no. 10A); EIAD 17 (Raghunath 2001: 95–96, no. 10A; 97–98, no. 10B = *ibid.* 101–102, no. 10D); EIAD 41 (unpublished). All four inscriptions open with *sidham namo bhagavato saṃmasambudhasa dhātuvaraparigahitasa*. Schopen (1988: 528), who could have known only the first of these inscriptions, believed that the shortest version of the invocation was *sidham namo bhagavato devarājasakatasa saṃmasambudhasa dhātuvaraparigahitasa*.

86. Schopen mentions only in passing (1988: 534) that *parigahita* occurs within the compound *mahāsenaparigahita*, but does not attempt to find an interpretation of both compounds in the light of each other. We are grateful to Richard Salomon for having pointed out to us (Seattle, April 2013) that herein lies an important weakness of Schopen’s interpretation.

87. Mann 2012: 168–169.

that – to a Buddhist audience at least – Virūpākha could also have brought to mind the figure of one of the *cāturmahārājikadevas*, the four great kings protecting the directions of the cosmos, and serving as tutelary figures for human kings.⁸⁸ In this context, it might be worth mentioning that one of the most frequent epithets of the Buddha, occurring in ten of the fourteen pillar inscriptions that contain the opening invocation, is *devarājasakatasa*. If that epithet is understood, broadly speaking, as referring to the kings among gods (and not specifically to Indra), then such a category would encompass the *cāturmahārājikadevas*. This could thus constitute a veiled allusion to the superiority of the Buddha (who is *dhātuvaraparigahita*) over the lower gods to whom king Siri-Cāntamūla was attached. This in turn would be in line with the rhetoric of superiority of the Buddha deployed with respect to two major non-Buddhist deities in the epigraphical poem from Phanigiri (EIAD 104) discussed above.⁸⁹

While the meaning of *parigrahita* as “favored” by such a person or deity is well attested in inscriptions,⁹⁰ the Nagarjunakonda corpus also uses the same verbal adjective in the sense of “received” (*suparigahita* regularly describes the recipients of a gift) or “surrounded” – for instance in the description of a *maṇḍapa* being surrounded by a quadrangular compound (*cātusāla*).⁹¹ In Buddhist terminology, moreover, *parigrahita* commonly means “realised” or “comprehended,”⁹² and such a meaning might be operative in the compound *dhātuvaraparigahita*, especially if it is possible to take *dhātu* as pointing to something quite different than relics. In this connection, Schopen categorically states that “in contemporaneous or – by Indian standards – nearly contemporaneous Buddhist donative inscriptions, *dhātu* always and unambiguously appears to mean ‘relic’.”⁹³ While *dhātu* indeed commonly occurs in the sense of “relic” in Indian Buddhist inscriptions, often concerned with the dedication of *stūpas* or *caityas*, the affirmation that *dhātu* always has this meaning is contradicted (twice) by at least one inscription alluded to by Schopen in support of his affirmation, namely the important – and admittedly difficult – Gāndhārī inscription of Senavarman

88. Virūpākṣa is generally put in charge of the western direction, although in some versions of this fluid system he watches over the south. Cf. Tournier 2016: 415–416.

89. Note also that such a claim, made by Buddhists, about the superiority of their founder, finds an echo in the phraseology of non-Buddhist inscriptions on the site. The Sanskrit inscription EIAD 65, recording the installation, by an official of the Ābhīra king Vasuṣeṇa, of an image of Aṣṭabhujaśvāmin (a form of Viṣṇu), opens as follows: *namo bhagavato ḍ devaparamadevasya ḍ purāṇapurūṣasya ḍ nārāyaṇasya*, which Sircar translates: “Salutation to Lord Nārāyaṇa who is the supreme god among the gods and the Primordial Male” (Sircar 1961–1962: 202–203). On this inscription see the recent publication by Salomon (2013).

90. It may be noted here that the use of *parigrahita* in the compound *mahāsenaparigahita* in a way anticipates similar constructions with *name of a deity* + *pādānudhyāta/pādānudhyāna* in Sanskrit inscriptions from Āndhradeśa, which are also commonly used in Gupta inscriptions. On the alternation between and equivalence of both these constructions, see Sircar 1966: 238; Ferrier & Törzsök 2008.

91. Both meanings were already discussed in Schopen 1988: 534, with references to relevant inscriptions. On compounds in *-parigraha* see also Fussman 1999: 569–574.

92. Cf. BHSD s.v.

93. Cf. Schopen 1988: 530.

(CKI 249 in Baums & Glass ongoing). In this inscription, as noticed by Schopen, the relics (G. *dhadu*) established in the *stūpa* are characterised as “pervaded by virtue, pervaded by concentration, wisdom and the seeing and knowledge of liberation” (*śīlaparibhāvita samasiprañāvimutiñāṇadrasā-
(ṇa)paribhāvita*), an epithet which points to the realization by a Buddha – or an *arhant* – of *nirvāṇa*. What Schopen failed to notice is that, immediately after this characterisation – and in perfect agreement with their characterization as *vimutiñāṇadrasā(ṇa)paribhāvita* – these relics are described as “gone to the realm of *nirvāṇa*, that is the most excellent place of the Tathāgata” (*tadagadapraṇa(ṇa)diśaṇīvaṇadhatugade*).⁹⁴ The Senavarman inscription thus offers an instance where the possibility must be assumed of learned play on the double meaning of *dhātu*. This is moreover confirmed by yet another passage of the same inscription, where the merit generated by the establishment of these relics is assigned with the phrase “they/one may come to rest/disappear in that deathless realm” (*amudae dhatue nivaṭato*).⁹⁵ In other words, there seems to be a conscious equation, in the inscription of Senavarman, between the state realized by the Buddha with his body, ascribing power to what will remain of it after his *parinirvāṇa*, and the state wished for by the donor.

If we can take the liberty, following Schopen, of using a 1st-century inscription from Gandhāra to shed light on a 4th-century inscription from Āndhradeśa – on the assumption that, “by Indian standards,” they are nearly contemporaneous – then we are likewise free to resort to inscriptions left by the successors of the Ikṣvākus in this region, in our attempt to use the epigraphic record to elucidate the use of the word *dhātu* in the Nagarjunakonda corpus. It will here suffice to mention the first set of copper-plates from Tummalagudem (EIAD 174). In this exceptional record, dwelling on Viṣṇukuṇḍin Govindavarman’s lavish support to Buddhists, the ruler is presented as having “conceived the great thought of Awakening in order to save the whole realm of sentient beings (*sattvadhātu*).”⁹⁶ While we do not wish to suggest that the use of *dhātu* in the Nagarjunakonda corpus actually pointed to the pair *sattvadhātu/dharmadhātu*, commonly featuring in *Mahāyānasūtras*,⁹⁷ this and the earlier evidence from the Senavarman inscription add nuance to Schopen’s assessment of the epigraphical formula.

To be sure, the evidence presented so far does not necessarily contradict the possibility of interpreting *dhātuvaraparigahita* as “enclosed” – or, as we would prefer to translate, “ensconced” – “within the most excellent relic,” but it seems clear enough that it is far from the only way of interpreting

94. Cf. von Hinüber 2003: 23, l. 7; Baums 2012: 228, 231. The reconstruction *prava(ṇa)* follows the suggestion of von Hinüber 2003: 27. For an alternative interpretation, see Baums 2012: 231, n. 71. Bailey 1980: 23, Fussman 1982: 8 and Salomon 1986: 270 translate *nīvaṇadhatugada-* as “possessing the material basis (*dhātu-*) of *nirvāṇa-*,” “qui sont des éléments de *nirvāṇa*” and “gone to the root of *nirvāṇa*,” each time as attribute of the relics.

95. Cf. von Hinüber 2003: 37, l. 12; Baums 2012: 229, 232.

96. Cf. Sankaranarayanan 1977, no. I (Tummalagudem plates), p. 154, l. 12: ... *sakalasattvadhātu-trāṇāyotpādītamahābodhicigtena* (corr. -*cittena*)... On this inscription, see Tournier in progress.

97. On this pair of concepts, see recently Silk 2015: 19–41.

the compound. In particular, the possibility to see in *dhātuvara* an allusion to *nirvāṇadhātu* is all the more tempting in that *nirvāṇa* is systematically mentioned in the inscriptions dedicated by Cāntisirī as the ultimate aim towards which the merits produced by her generosity are dedicated. In the inscription EIAD 19, which offered the concrete occasion for our discussion, the word *nirvāṇa* occurs as often as three times, so it is difficult to maintain that such a notion was not on the minds of those who composed this record. It is therefore tempting to think that, as in the Senavarman inscription, the description of the state realized by the Buddha and that aimed at by the donor reflected each other. In light of such a parallel, *dhātuvaraparigahita* can be tentatively translated as “who is embraced by the most excellent realm [of *nirvāṇa*].”

Conclusion

We have presented above some of the results of the first year of our work, and notably of our first weeks of fieldwork in Telangana and Andhra Pradesh. While our research began with the specific aim of publishing a corpus of Ikṣvāku inscriptions – and this we indeed hope to do in the near future – our experience in the field has led us to broaden our scope and to envisage a comprehensive corpus of the Early Inscriptions of Āndhradeśa. We stand only at the beginning of this multi-year endeavour, that we hope will be undertaken in progressively closer cooperation with our academic colleagues as well as with archaeological authorities in India. Nevertheless, it seems clear already from these first results how much can be gained from an intensive and systematic field survey for the quality of philological work on these important historical documents. It has also become clear how substantially existing reference works fall short of presenting a complete picture of the epigraphical record for the early, predominantly Buddhist, phase of the history of this region, and that we may still look forward to substantial advances in our knowledge.

Abbreviations

ARIE	<i>Annual Report on Indian Epigraphy</i> , Archaeological Survey of India.
BHSD	<i>Buddhist Hybrid Sanskrit Dictionary</i> (Edgerton 1953).
CDIAL	<i>Comparative Dictionary of the Indo-Aryan Languages</i> (Turner 1966).
IAR	<i>Indian Archaeology – A Review</i> , Archaeological Survey of India.
MW	<i>A Sanskrit-English Dictionary</i> (Monier-Williams 1899).
PTSD	<i>The Pali Text Society's Pali-English Dictionary</i> (Rhys Davids & Stede 1921–1925).

For Pali texts we follow the abbreviation system of von Hinüber 1996.

Bibliography

BAILEY, H. W.

- 1980 “A Kharoṣṭrī Inscription of Seṇavarma, King of Oḍi,” *The Journal of the Royal Asiatic Society of Great Britain and Ireland*, pp. 21–29.

BALBIR, Nalini

- 1994 “An investigation of textual sources on the *samavasaraṇa* (‘The Holy Assembly of the Jina’),” in Nalini BALBIR & Joachim K. BAUTZE (eds.), *Festschrift: Klaus Bruhn zur Vollendung des 65. Lebensjahres dargebracht von Schülern, Freunden und Kollegen*, Reinbek, Verlag für Orientalistische Fachpublikationen, pp. 67–104.

BAUMS, Stefan

- 2009 “A Gāndhārī Commentary on Early Buddhist Verses: British Library Kharoṣṭhī Fragments 7, 9, 13 and 18,” Ph.D. dissertation, University of Washington.
- 2012 “Catalog and Revised Texts and Translations of Gandharan Reliquary Inscriptions,” in David JONGEWARD, Elizabeth ERRINGTON, Richard SALOMON & Stefan BAUMS, *Gandharan Buddhist Reliquaries*, Seattle, Early Buddhist Manuscripts Project (Gandharan Studies 1), pp. 200–251.

BAUMS, Stefan & Andrew GLASS

- Ongoing *Catalog of Gāndhārī Texts*. <https://gandhari.org/catalog>.

BENDALL, Cecil

- 1897–1902 *Çikshāsamuccaya: A Compendium of Buddhistic Teaching Compiled by Çāntideva Chiefly from Earlier Mahāyāna-Sūtras*, St.-Petersbourg, Académie impériale des sciences (Bibliotheca Buddhica 1).

BENDALL, Cecil & W.H.D. ROUSE

- 1922 *Śikshā-samuccaya: A Compendium of Buddhist Doctrine Compiled by Śāntideva Chiefly from Earlier Mahāyāna Sūtras*, London, John Murray (Indian Texts Series).

BÉNISTI, Mireille

- 1961 “À propos d’un relief inédit de Kârlâ,” *Arts Asiatiques* 8 (4), pp. 263–270.

BERNHARD, Franz

- 1965–1968 *Udānavarga*, Göttingen, Vandenhoeck & Ruprecht (Abhandlungen der Akademie der Wissenschaften in Göttingen, philologisch-historische Klasse, dritte Folge, Nr. 54/Sanskrittexte aus den Turfanfunden, X).

BROUGH, John

- 1962 *The Gāndhārī Dharmapada*, London, Oxford University Press (London Oriental Series, Volume 7).

CONE, Margaret

- 1989 “Patna Dharmapada, Part I: Text,” *Journal of the Pali Text Society* 13, pp. 101–217.

EDGERTON, Franklin

- 1953 *Buddhist Hybrid Sanskrit Grammar and Dictionary*, New Haven, Yale University Press (William Dwight Whitney Linguistic Series).

FALK, Harry

- 1999–2000 “The Pātagaṇḍigūḍem Copper-Plate Grant of the Ikṣvāku King Ehavala Cāntamūla,” *Silk Road Art and Archaeology* 6, pp. 275–283.

FERRIER, Cédric & Judit TÖRZSÖK

- 2008 “Meditating on the King’s Feet? Some Remarks on the Expression *pādānudhyāta*,” *Indo-Iranian Journal* 51 (2), pp. 93–113.

FUSSMAN, Gérard

- 1982 “Documents épigraphiques kouchans, III: l’inscription de Senavarma, roi d’Oḍi, une nouvelle lecture,” *Bulletin de l’École française d’Extrême-Orient* 71, pp. 1–46.
 1999 “La place des Sukhāvatīvyūha dans le bouddhisme indien,” *Journal Asiatique* 287 (2), pp. 523–586.

GADRE, A.S

- 1955–1956 “Brahmi Inscription from Salihundam,” *Epigraphia Indica* 31, pp. 87–88.

GHOSH, Suchandra

- 2006 “Coastal Andhra and the Bay of Bengal Trade Network,” *South Asian Studies* 22, pp. 65–68.

HANUMANTHA RAO, B.S.L., N.S. RAMACHANDRA MURTHY, B. SUBRAHMANYAM & Īmani ŚIVANĀGIREDDI

- 1998 *Buddhist Inscriptions of Andhradesa*, Secunderabad, Ananda Buddha Vihara Trust.

HARRISON, Paul

- 1982 "Sanskrit Fragments of a Lokottaravādin-Tradition," in L.A. HERCUS (ed.), *Indological and Buddhist Studies: Volume in Honour of Professor J.W. de Jong on His Sixtieth Birthday*, Canberra, Faculty of Asian Studies, pp. 211–234.

HARTMANN, Jens-Uwe

- 2015 "Poetry: South Asia," in Jonathan A. SILK, Oskar VON HINÜBER & Vincent ELTSCHINGER (eds.), *Brill's Encyclopedia of Buddhism*, volume I, Leiden, Brill, pp. 532–540.

VON HINÜBER, Oskar

- 1996 *A Handbook of Pāli Literature*, Berlin, de Gruyter (Indian Philology and South Asian Studies 2).
- 2003 *Beiträge zur Erklärung der Senavarma-Inschrift*, Stuttgart, Franz Steiner Verlag (Akademie der Wissenschaften und der Literatur, Abhandlungen der Geistes- und Sozialwissenschaftlichen Klasse, Jahrgang 2003 1).
- 2012 "A Second Inscription from Phanigiri (Andhrapradesh): Dhammasena's Donation," *Annual Report of the International Research Institute for Advanced Buddhology at Soka University for the Academic Year 2011* 15, pp. 3–10.
- 2013a "Again on the Donation made by the Vinayadhara Dhammasena and on other inscriptions from Phanigiri," *Annual Report of the International Research Institute for Advanced Buddhology at Soka University for the Academic Year 2012* 16, pp. 3–12.
- 2013b "Behind the Scenes: The Struggle of Political Groups for Influence as Reflected in Inscriptions," *Indo-Iranian Journal* 56, pp. 365–379.
- 2016 "Buddhist Texts and Buddhist Images: New Evidence from Kanaganahalli (Karnataka/India)," *Annual Report of the International Research Institute for Advanced Buddhology at Soka University for the Academic Year 2015* 19, pp. 7–20.

VON HINÜBER, Oskar & K.R. NORMAN

- 1995 *Dhammapada*, Oxford, The Pali Text Society.

ISO 15919

International Standard ISO 15919: Information and documentation, transliteration of Devanagari and related Indic scripts into Latin characters = Information et documentation, translittération du Devanagari et des écritures indiennes liées en caractères latins, Geneva, International Organization for Standardization, 2001.

KHAN, Mohammad Abdul Waheed

- 1969 *A Monograph on an Early Buddhist Stūpa at Kesanapalli (District Guntur, Andhra Pradesh)*, Edited by N. Ramesan, Hyderabad, Govt. of Andhra Pradesh (Archaeological Series 27).

KRISHNA SASTRY, V.V.

- 1990 “Three Copper-Plate Grants of Prithvi-Sri Mularaja from Kondavidu,” *Journal of the Epigraphical Society of India (Bharatiya Purabhilekha Patrika)* 16, pp. 71–84, with pl. IV.

LONGHURST, A.H.

- 1938 *The Buddhist Antiquities of Nāgārjunakoṇḍa, Madras Presidency*, Delhi, Manager of Publications (Memoirs of the Archaeological Survey of India 54).

MANN, Richard D.

- 2012 *The Rise of Mahāśena: The Transformation of Skanda-Kārttikeya in North India from the Kuṣāṇa to Gupta Empires*, Leiden, Brill (Brill’s Indological Library 39).

MONIER-WILLIAMS, Monier

- 1899 *A Sanskrit-English Dictionary Etymologically and Philologically Arranged with Special Reference to Cognate Indo-European Languages*, Oxford, Clarendon Press.

MUNIRATHNAM, K.

- 2005 “Rudrapurisadatta Inscription from Phanigiri,” *Journal of the Epigraphical Society of India (Bharatiya Purabhilekha Patrika)* 32, pp. 78–81.

NAGARAJU, S.

- 1995 “Emergence of Regional Identity and Beginnings of Vernacular Literature: A Case Study of Telugu,” *Social Scientist* 23 (10/12), pp. 8–23.

NAKANISHI, Maiko & Oskar VON HINÜBER

- 2014 *Kanaganahalli Inscriptions. Annual Report of the International Research Institute for Advanced Buddhology at Soka University for the year 2013* 17, Supplement, Tokyo, International Research Institute for Advanced Buddhology, Soka University.

OWEN, Lisa N.

- 2012 *Carving Devotion in the Jain Caves at Ellora*, Leiden, Brill (Brill’s Indological Library 41).

PARABRAHMA SASTRY, P.V. (ed.)

- 1975 *Department of Archaeology and Museums, Andhra Pradesh: Annual Report on Epigraphy, 1967*, Hyderabad, Govt. of Andhra Pradesh (Epigraphical Series 10).
- 1977 *Inscriptions of Andhra Pradesh: Cuddapah District, Part I*, Hyderabad, Govt. of Andhra Pradesh (Epigraphical Series 12).

RADICH, Michael

- 2015 *The Mahāparinirvāṇa-Mahāsūtra and the Emergence of Tathāgatagarbha Doctrine*, Hamburg, Hamburg University Press.

RAGHUNATH, K.

- 2001 *The Ikṣvākus of Vijayapuri (A Study of the Nagarjunakonda Inscriptions)*, Delhi, Eastern Book Linkers.

RAMACHANDRAN, T.N.

- 1953 *Nāgārjunakoṇḍa, 1938*, Delhi, Manager of Publications (Memoirs of the Archaeological Survey of India 71).

RAMESH, K.V. & K. MUNIRATNAM

- 2011–2012 “Phanigiri Inscription of Rudrapurushadatta,” *Epigraphia Indica* 43 (1), pp. 75–77.

RHYS DAVIDS, T.W. & William STEDE

- 1921–1925 *The Pali Text Society's Pali-English Dictionary*, London, Pali Text Society.

ROSEN STONE, Elizabeth.

- 1994 *The Buddhist Art of Nāgārjunakoṇḍa*, Delhi, Motilal Banarsidass (Buddhist Traditions 25).

SALOMON, Richard.

- 1986 “The Inscription of Senavarma, King of Oḍi,” *Indo-Iranian Journal* 29, pp. 261–293.
2013 “Aṣṭabhujaśvāmin: A Reinterpretation of the Ābhīra Inscription from Nagarjunakonda,” *Indo-Iranian Journal* 56 (3–4), pp. 397–417.

SANKARANARAYANAN, S.

- 1967–1968 “Rental Pillar Inscription of Siri-Chantamula I, Year 5,” *Epigraphia Indica* 37, pp. 29–32.
1974 “Two Viṣṇukunḍi Charters from Tummalagudem,” in N. VENKATARAMANAYYA & P.V. PARABRAHMA SASTRY (eds.), *Epigraphia Andhrīca Vol. II* (Epigraphical Series 5), Hyderabad, Govt. of Andhra Pradesh, pp. 4–20.
1977 *The Viṣṇukunḍis and Their Times: An Epigraphical Study*, Delhi, Agam Prakashan.
1977–1978 “Guṇṭupalli Pillar Inscription of Śālaṅkāyana Nandivarman,” *Epigraphia Indica* 42, pp. 75–96.

SARKAR, H.

- 1965–1966 “Nagarjunakonda Prakrit Inscription of Gautamiputra Vijaya Satakarni, Year 6,” *Epigraphia Indica* 36, pp. 273–274.
1969 “A Note on Some Fragmentary Inscriptions from Nagarjunakonda,” *Epigraphia Indica* 38, pp. 175–178.

SARMA, I.K.

- 1978 “Epigraphical Discoveries at Guntupalli,” *Journal of the Epigraphical Society of India (Bharatiya Purabhilekha Patrika)* 5, pp. 48–61.
1988 *Studies in Early Buddhist Monuments and Brāhmī Inscriptions of Āndhradēśa*, Nagpur, Dattsons.

SASTRI, T.V.G, M. KASTURI BAI & M. VEERENDER

- 1992 *Vaddamanu Excavations, 1981-85*, Hyderabad, Birla Archaeological & Cultural Research Institute.

SCHNEIDER, Johannes

- 2014 *Eine buddhistische Kritik der indischen Götter: Śaṃkarasvāmins Devāṭiśayastotra mit Prajñāvarmans Kommentar*, Wien, Arbeitskreis für Tibetische und Buddhistische Studien (Wiener Studien zur Tibetologie und Buddhismuskunde).
- 2015 “Eine buddhistische Sicht auf den Buddhāvatāra,” *Berliner Indologische Studien* 22, pp. 87–102.

SCHOPEN, Gregory

- 1988 “On the Buddha and His Bones: The Conception of a Relic in the Inscriptions of Nāgarjunikoṇḍa,” *Journal of the American Oriental Society* 108 (4), pp. 527–537.

SENART, Émile

- 1882–1897 *Le Mahāvastu*, Paris, Imprimerie nationale (Collection d’ouvrages orientaux/Société asiatique), 3 vols.

SEWELL, Robert

- 1880 *Report on the Amarāvati Tope, and Excavations on Its Site in 1877*, London, Printed by G.E. Eyre and W. Spottiswoode.

SHIMADA, Akira

- 2013 “Guntupalle: The Oldest Rock-Cut Buddhist Monastery in the Eastern Deccan,” in Pia BRANCACCIO (ed.), *Living rock: Buddhist, Hindu and Jain Cave Temples in the Western Deccan*, pp. 61–75, Mumbai, Marg Foundation.

SHIZUTANI MASAO 静谷正雄

- 1965 *Indo Bukkyō Himei Mokuroku* インド仏教碑銘目録 [Inventory of Indian Buddhist Inscriptions], Kyōto, Heirakuji Shoten.

SILK, Jonathan

- 2015 *Buddhist Cosmic Unity. An Edition, Translation and Study of the Anūnatvāpūrṇatvanirdeśaparivarta*, Hamburg, Hamburg University Press (Hamburg Buddhist Studies 4).

SIRCAR, D.C.

- 1942 *Select Inscriptions Bearing on Indian History and Civilization*, vol. I, Calcutta, University of Calcutta.
- 1961–1962 “Nagarjunikonda Inscription of the Time of Abhira Vasushena, Year 30,” *Epigraphia Indica* 34, pp. 197–204.
- 1963–1964 “More Inscriptions from Nagarjunikonda,” *Epigraphia Indica* 35, pp. 1–36.
- 1965 *Select Inscriptions Bearing on Indian History and Civilization*, vol. I, Second edition, revised and enlarged, Calcutta, University of Calcutta.
- 1966 *Indian Epigraphical Glossary*, Delhi, Motilal Banarsidass.

- 1969–1970 “Some Epigraphic and Manuscript Records, 1: An Alleged Inscription of Khāravela. 2: Buddhist Dhāraṇīs from China in Inscriptions and Manuscripts,” *Journal of Ancient Indian History* 3, pp. 30–49.
- 1972–1973 “Indological Notes. 14: Kalinga-Mahiṣak-Ādhipati. 15: The Yavanas and Mathurā. 16: The Brahmavaivarta Purāṇa and the Vaidya Community of Orissa. 17: Further Observations on the Skandar and Siyān Inscriptions,” *Journal of Ancient Indian History* 6, pp. 166–178.
- SIRCAR, D.C. & K.G. KRISHNAN
 1960–1961 “Two Inscriptions from Nagarjunikonda,” *Epigraphia Indica* 34, pp. 17–22.
- SKILLING, Peter
 1991 “A Buddhist Verse Inscription from Andhra Pradesh,” *Indo-Iranian Journal* 34 (4), pp. 239–246.
 2008 “New Discoveries from South India: The Life of the Buddha at Phanigiri, Andhra Pradesh,” *Arts Asiatiques* 63, pp. 96–118.
- SKILLING, Peter & Oskar VON HINÜBER
 2011 “An Epigraphical Buddhist Poem from Phanigiri (Andhrapradesh) from the Time of Rudrapuruṣadatta,” *Annual Report of the International Research Institute for Advanced Buddhology at Soka University for the Academic Year 2010* 14, pp. 7–12.
- SMITH, H.
 1915 *The Khuddaka-Pāṭha together with Its Commentary Paramatthajjotikā I*, London, Pali Text Society.
- SOMASEKHARA SARMA, M.
 1974 “Some Prākṛit Inscriptions from Ghaṇṭaśāla,” in N. VENKATARAMANAYYA & P.V. PARABRAHMA SASTRY (eds.), *Epigraphia Andhrica Vol. II* (Epigraphical Series 5), Hyderabad, Govt. of Andhra Pradesh, 1–3.
- SRINIVASAN, P.R.
 1965–1966 “A Brahmi Inscription from Gangaperuru,” *Epigraphia Indica* 36, pp. 207–208.
 1973 “Some Brahmi Inscriptions from Guntupalli,” *Epigraphia Indica* 39, pp. 247–252.
- SRINIVASAN, P.R. & S. SANKARANARAYANAN
 1979 *Inscriptions of the Ikshvāku Period*, Hyderabad, Govt. of Andhra Pradesh (Epigraphical Series 14).
- STRAUCH, Ingo
 2014 “The Evolution of the Buddhist *Rakṣā* Genre in the Light of New Evidence from Gandhāra: The **Manasvi-Nāgarāja-Sūtra* from the Bajaur Collection of Kharoṣṭhī Manuscripts,” *Bulletin of the School of Oriental and African Studies* 77 (1), pp. 63–84.

SUBRAHMANYAM, B., J. VIJAYA KUMAR, G.V. RAMA KRISHNA RAO
& K.S.B. KESAVA

- 2008 *Phanigiri: A Buddhist Site in Andhra Pradesh: An Interim Report, 2001-2007*, Edited by P. Chenna Reddy, Hyderabad, Dept. of Archaeology and Museums, Govt. of Andhra Pradesh (Archaeological Series 76).

SUBRAHMANYAM, R.

- 1964 *Salihundam, a Buddhist Site in Andhra Pradesh*, Hyderabad, Govt. of Andhra Pradesh (Archaeological Series 17).
1968 *The Guntupally Brahmi Inscription of Kharavela*, Hyderabad, Govt. of Andhra Pradesh (Epigraphical Series 3).

SUZUKI Daisetz Teitaro & Idzumi HOKEI

- 1949 *The Gaṇḍavyūha Sūtra*, new revised edition, Tokyo, The Society for the Publication of Sacred Books of the World.

TERRAL-MARTINI, Giselle

- 1959 “Velāmajātaka,” *Bulletin de l'École française d'Extrême-Orient* 49, pp. 609–616.

TOURNIER, Vincent

- 2016 “Protective Verses for Travellers: A Fragment of the *Diśā-sauvastika-gāthās* Related to the Scriptures of the Mahā-sāṃghika-Lokottaravādins,” in J. BRAARVIG (ed.), *Buddhist Manuscripts*, volume IV, Oslo, Hermes Publishing, pp. 407–437.
2017 *La formation du Mahāvastu et la mise en place des conceptions relatives à la carrière du bodhisattva*, Paris, EFEO (Monographies 195).
in progress “A Tide of Merit: Royal Donors, Tāmrāparṇīya Monks, and the Buddha’s Awakening in 5th–6th-century Āndhradeśa.”

TSUKAMOTO Keishō 塚本啓祥

- 1996, 1998, 2003 *Indo Bukkyō himei no kenkyū* インド仏教碑銘の研究 (*A Comprehensive Study of the Indian Buddhist Inscriptions*). Kyōto, Heirakuji Shoten, 3 vols.

TURNER, R.L.

- 1966 *A Comparative Dictionary of the Indo-Aryan Languages*, London, Oxford University Press.

VOGEL, J.Ph.

- 1929–1930a “Prakrit Inscriptions from a Buddhist Site at Nagarjunikonda,” *Epigraphia Indica* 20, pp. 1–36.
1929–1930b “Two Additional Inscriptions from Nagarjunikonda,” *Epigraphia Indica* 20, p. 37.
1931–1932 “Additional Prakrit Inscriptions from Nagarjunikonda,” *Epigraphia Indica* 21, pp. 61–71.
1947–1948 “Prakrit Inscriptions of Ghaṇṭaśālā,” *Epigraphia Indica* 27, pp. 1–4.

WACKERNAGEL, Jacob

1896 *Altindische Grammatik. Band I: Lautlehre*, Göttingen, Vandenhoeck und Ruprecht.

WARREN, Henry Clarke & Dharmananda KOSAMBI

1950 *Visuddhimagga of Buddhaghosâcariya*, Cambridge (Mass.), Harvard University Press (Harvard Oriental Series 51).