



HAL
open science

Language continuity despite population replacement in Remote Oceania

Cosimo Posth, Kathrin Nägele, Heidi Colleran, Frédérique Valentin, Stuart Bedford, Kaitip Kami, Richard Shing, Hallie Buckley, Rebecca Kinaston, Mary Walworth, et al.

► **To cite this version:**

Cosimo Posth, Kathrin Nägele, Heidi Colleran, Frédérique Valentin, Stuart Bedford, et al.. Language continuity despite population replacement in Remote Oceania. *Nature Ecology & Evolution*, 2018, 2 (4), pp.731-740. 10.1038/s41559-018-0498-2. halshs-02782241

HAL Id: halshs-02782241

<https://shs.hal.science/halshs-02782241v1>

Submitted on 4 Jan 2024

HAL is a multi-disciplinary open access archive for the deposit and dissemination of scientific research documents, whether they are published or not. The documents may come from teaching and research institutions in France or abroad, or from public or private research centers.

L'archive ouverte pluridisciplinaire **HAL**, est destinée au dépôt et à la diffusion de documents scientifiques de niveau recherche, publiés ou non, émanant des établissements d'enseignement et de recherche français ou étrangers, des laboratoires publics ou privés.

Published in final edited form as:

Nat Ecol Evol. 2018 April ; 2(4): 731–740. doi:10.1038/s41559-018-0498-2.

Language continuity despite population replacement in Remote Oceania

Cosimo Posth^{#1,*}, Kathrin Nägele^{#1}, Heidi Colleran^{2,‡}, Frédérique Valentin³, Stuart Bedford^{4,2}, Kaitip W. Kami^{5,2}, Richard Shing⁵, Hallie Buckley⁶, Rebecca Kinaston^{1,6}, Mary Walworth², Geoffrey R. Clark⁷, Christian Reepmeyer⁸, James Flexner⁹, Tamara Maric¹⁰, Johannes Moser¹¹, Julia Gresky¹², Lawrence Kiko¹³, Kathryn J. Robson¹⁴, Kathryn Auckland¹⁵, Stephen J. Oppenheimer¹⁶, Adrian V.S. Hill¹⁵, Alexander J. Mentzer¹⁵, Jana Zech¹⁷, Fiona Petchey¹⁸, Patrick Roberts¹⁷, Choongwon Jeong¹, Russell D. Gray², Johannes Krause^{1,*}, and Adam Powell^{2,1,*}

¹Department of Archaeogenetics, Max Planck Institute for the Science of Human History, Kahlaische Straße 10, Jena 07745, Germany ²Department of Linguistic and Cultural Evolution, Max Planck Institute for the Science of Human History, Kahlaische Straße 10, Jena 07745, Germany ³Maison de l'Archéologie et de l'Ethnologie, CNRS, UMR 7041, 92023 Nanterre, France ⁴School of Culture, History and Language, College of Asia & the Pacific, The Australian National University, Canberra, ACT 2601, Australia ⁵Vanuatu Cultural Centre (VKS), PO Box 184, Port-Vila, Vanuatu ⁶Department of Anatomy, School of Biomedical Sciences, University of Otago, PO Box 56, Dunedin 9054, New Zealand ⁷Archaeology and Natural History, College of Asia and the Pacific, Australian National University, Canberra, ACT 0200, Australia ⁸College of Arts, Society and Education, James Cook University, Cairns, QLD 4870, Australia ⁹Department of Archaeology, University of Sydney, Sydney, NSW 2006, Australia ¹⁰Service de la Culture et du Patrimoine, Punaauia, Tahiti, French Polynesia ¹¹Commission for Archaeology of Non-European Cultures (KAAK), German Archaeological Institute, Dörenstraße 35-37, 53173 Bonn, Germany ¹²Department of Natural Sciences, German Archaeological Institute, Im Dol 2-6, 14195 Berlin, Germany ¹³Solomon Islands National Museum, Mendana Avenue, Honiara, Solomon Islands ¹⁴MRC Weatherall Institute of Molecular Medicine, University of Oxford, John Radcliffe Hospital, Headington, Oxford OX3 9DS, UK ¹⁵Wellcome Centre for Human Genetics, University of Oxford, Roosevelt Drive, Oxford OX3 7BN, UK ¹⁶School of Anthropology and Museum Ethnography,

Users may view, print, copy, and download text and data-mine the content in such documents, for the purposes of academic research, subject always to the full Conditions of use:http://www.nature.com/authors/editorial_policies/license.html#terms

[#]To whom correspondence should be addressed. powell@shh.mpg.de, krause@shh.mpg.de, posth@shh.mpg.de. [‡]Correspondence for Vanuatu genotyping data. colleran@shh.mpg.de.

Author Contributions

F.V., S.B., R.S., H.B., R.K., G.R.C., C.R., J.F., T.M., J.M., J.G. & L.K. contributed archaeological material and H.C., K.W.K. & A.P. contributed the 27 present-day Vanuatu samples. J.Z., F.P. & P.R. contributed isotopic data and radiocarbon date calibrations. M.W. & R.G. contributed linguistic interpretation, and F.V., S.B., J.M., F.P. & P.R. contributed text in the supplementary information. K.J.R., K.A., S.J.O., A.V.S.H. & A.J.M. contributed geographical labels for Parks *et al.* 2017 samples. C.P. & K.N. performed ancient DNA laboratory work, and C.P., K.N., C.J. & A.P. performed population genetic analyses. C.P., K.N., H.C. & A.P. wrote the paper with input from F.V., S.B., H.B., M.W., F.P., P.R., C.J., R.G. & J.K., and C.P. & A.P. created the figures. The study was conceived and coordinated by C.P., K.N., H.C., R.G., J.K. & A.P.

Competing Interests

The authors declare no competing financial interests.

University of Oxford, Oxford OX2 6PE, UK ¹⁷Department of Archaeology, Max Planck Institute for the Science of Human History, Kahlaische Straße 10, Jena 07745, Germany ¹⁸Waikato Radiocarbon Dating Laboratory, The University of Waikato, Hillcrest Road, Hamilton, 3240, New Zealand

These authors contributed equally to this work.

Summary

Recent genomic analyses show that the earliest peoples reaching Remote Oceania – associated with Austronesian-speaking Lapita culture – were almost completely East Asian, without detectable Papuan ancestry. Yet Papuan-related genetic ancestry is found across present-day Pacific populations, indicating that peoples from Near Oceania have played a significant – but largely unknown – ancestral role. Here, new genome-wide data from 19 South Pacific individuals provide direct evidence of a so-far undescribed Papuan expansion into Remote Oceania starting ~2,500 years before present, far earlier than previously estimated and supporting a model from historical linguistics. New genome-wide data from 27 contemporary ni-Vanuatu demonstrate a subsequent and almost complete replacement of Lapita-Austronesian by Near Oceanian ancestry. Despite this massive demographic change, incoming Papuan languages did not replace Austronesian languages. Population replacement with language continuity is extremely rare – if not unprecedented – in human history. Our analyses show that rather than one large-scale event, the process was incremental and complex, with repeated migrations and sex-biased admixture with peoples from the Bismarck Archipelago.

Sahul – the continent comprising present-day Australia, Tasmania and New Guinea – was colonized by modern humans during the Pleistocene as early as 65,000 years before present¹ (y BP). Yet it took more than 60,000 years for humans to move east of the Solomon Islands, from Near Oceania out into Remote Oceania² (Fig. 1b). These seafaring Neolithic peoples, part of the Austronesian Expansion beginning ~5,500y BP, likely in present-day Taiwan and the nearby mainland^{3–5}, carried farming technology and a major branch of the Austronesian languages⁶ into Island Southeast Asia, eventually reaching New Guinea and the Bismarck Archipelago and encountering indigenous Papuans. Here, at ~3,300y BP the Lapita Cultural Complex^{3,7} appeared – characterized by distinctive dentate-stamped pottery – and using the out-rigger sailing canoe, Lapita peoples expanded east, leap-frogging beyond the Solomon Islands^{8,9}. They transported their landscapes³ and Oceanic languages out into Remote Oceania, first arriving in the Reef-Santa Cruz islands, Vanuatu¹⁰ and New Caledonia ~3,000y BP¹¹, and rapidly navigated >800km of open ocean to Fiji, reaching western Polynesia by ~2,850y BP¹².

Uncovering the extent of interaction between incoming Austronesian-Lapita and indigenous Papuan peoples is critical to understanding all subsequent Pacific prehistory. ‘Papuan’ here refers to both the non-Austronesian languages found across New Guinea and a component of genetic ancestry, likely to have diverged from the ancestors of present-day East Asians at least 27,000y BP¹³. The linguistic, cultural and genetic diversity in New Guinea is immense, due to complex histories of differentiation since first arrival¹⁴. While the majority

of Near Oceanians today speak Papuan languages, Remote Oceanians almost exclusively speak Oceanic languages of the Austronesian family¹⁵. Bayesian phylogenetic analyses of 400 of the >1,200 Austronesian languages⁵ broadly support the Express Train model of the Austronesian Expansion, whereby Austronesian-speaking groups had negligible cultural or genetic interaction with indigenous Papuans in Near Oceania before moving further into the Pacific. However, the genetic composition of the present-day South Pacific indicates a more complex history, comprising major East Asian-Austronesian and minor Papuan components of genome-wide ancestry (~79:21%¹⁶, ~87:13%¹³). Mitochondrial DNA (mtDNA)¹⁷ and Y-chromosome^{18,19} studies show that populations across Polynesia have maternal ancestry largely of Austronesian origin (>96%²⁰) while the majority of their Y-chromosomes derive from Near Oceania (>60%²⁰), confirmed in recent X-chromosome analyses^{13,21}. This suggests that Oceanic-speaking populations – prior to or during the formation of the Lapita Cultural Complex – experienced significantly sex-biased admixture, involving women of Austronesian origin and Papuan men. This model requires that Lapita peoples, while maintaining Oceanic language(s), had admixed ancestry in Near Oceania prior to their eastward expansion into Remote Oceania. However, the first genome-wide ancient data from the region²¹ demonstrates – consistent with craniofacial analyses²² – that Papuan ancestry is largely absent in individuals from Lapita sites in both Vanuatu and Tonga. The present-day genetic ancestry of Remote Oceania can therefore *only* be explained by subsequent population expansion, carrying Papuan ancestry into the Pacific.

Vanuatu has been an important hub in the western Pacific²³ from Lapita onwards. Uncovering the detailed demographic processes shaping the genetic and linguistic landscape of Vanuatu is thus crucial to understanding those of the wider Pacific. Here we provide the earliest direct evidence of Papuan genetic ancestry in Remote Oceania. Our results reveal that peoples from Near Oceania began arriving just a few centuries after the first Lapita settlements in Vanuatu. This was followed by an almost complete – yet incremental – replacement of Lapita-Austronesian by Bismarck Archipelago-like genetic ancestry.

Results

Ancient and modern genome-wide data

We recovered genome-wide and mitochondrial aDNA data from the bones or teeth of 19 individuals from archaeological sites ¹⁴C-dated to ~2,600-200y BP across Vanuatu ($n=12$), Tonga ($n=3$), French Polynesia ($n=3$) and the Solomon Islands ($n=1$) (Table 1, Supplementary table 1, Supplementary table 2, Methods). DNA was extracted²⁴ and converted into double stranded genetic libraries^{25,26} in dedicated cleanroom facilities. Hybridization capture targeted the complete mitochondrial genome and ~1.24 million single nucleotide polymorphisms (SNPs) (*1240K*)^{27,28}, followed by next generation sequencing. The isolated aDNA was authenticated based on the presence of typical deamination patterns, low levels of mtDNA contamination, X-chromosome contamination in males, and analyses were restricted, if necessary, to the likely endogenous deaminated sequences²⁹ (Supplementary table 3, Supplementary table 4, Supplementary figure 1, Methods). The genome-wide aDNA was co-analyzed with four published Lapita samples²¹, 781 present-day Oceanian and East Asian samples genotyped for ~600K SNPs on the *Affymetrix Human*

Origins (HO) *Array*^{21,30} and 308 high coverage genomes³¹. We also genotyped 27 ni-Vanuatu samples from the islands of Malakula and Efate (Methods, Supplementary figure 2) on the HO *Array*, with eight also shotgun sequenced (SG) at low coverage (0.6-3 fold) (Supplementary table 5). All newly generated data were analyzed alongside published genome-wide *Illumina HumanCore-24* data from 754 individuals across Remote Oceania, including 610 from Vanuatu³² (Supplementary table 6).

Demographic history of Vanuatu

While early Lapita people in Vanuatu had largely East Asian-Austronesian ancestry²¹, principal component analysis (PCA) shows that – though diverse – the 27 present-day individuals fall instead within the Near Oceanic cline, in close proximity to Santa Cruz and New Britain populations (Fig. 1a,b), demonstrating an almost complete population turnover since initial settlement. Previous *ALDER*³³ analysis estimated the time of Papuan admixture into Remote Oceania at 1,927-1,239y BP for Polynesian populations²¹, and our analyses on regional populations give similar estimates of ~2,000-1,500y BP (see below). Yet the ¹⁴C dates for the ancient samples demonstrate that Papuan ancestry was already in Vanuatu up to 1,000 years earlier, from ~2,500y BP. Both the earliest (*TAN002*) and latest (*TAN001*) ancient samples from Tanna (Supplementary figure 2) lay inside the distribution of the new present-day HO samples, but it is striking that ancient samples from Malakula and Futuna within this timeframe do not (Fig. 1a). The Malakula time-transect bridges much of the massive genetic distance between initial Lapita inhabitants and contemporary ni-Vanuatu. *ADMIXTURE*³⁴ analyses on ancient and modern Vanuatu SG data support a complex population replacement. With $K=5$ ancestral components – allowing the distinction between *Asian-Austronesian* (blue) and *Near Oceanian-Papuan* (green) – Vanuatu demonstrates a general but heterogeneous trend of increasing *Papuan* ancestry through time (Fig. 2a), from largely *Austronesian* Lapita (ref. 21, and *MAL006*) to predominantly *Papuan* ni-Vanuatu ancestry.

qpWave analysis³⁵ determined that ancient Vanuatu could be modeled as a two-way admixture between Papuan and Austronesian populations (Supplementary table 7), using *qpAdm*³⁶ to quantify the relative ancestry proportions (Fig. 2b, Supplementary table 8). The near-contemporaneous genetic heterogeneity in Malakula is striking. Over the ~500y period beginning ~2,500y BP Malakula was home to individuals with between 22 to 46% of their ancestry derived from ancestral Austronesians (Futuna samples ~1,100y BP have 11 to 17%). The earliest ancient individual, *TAN002*, is a male carrying both Papuan mtDNA and Y-chromosome haplogroups (*Q2a* and *K21b*, respectively), with autosomes consistent with having no Austronesian ancestry (Fig. 2b, Supplementary figure 3). We estimated the excess Austronesian X-chromosome ancestry relative to the autosomes across our time-transect, finding diverse levels of maternal ancestry within Malakula (Supplementary table 8). In particular, *MAL004* – a male with typical Papuan Y-chromosome haplogroup *M1b* – carries as much as ~50% Austronesian maternal excess (and Polynesian mtDNA haplogroup *B4a1a1a*), providing the first direct snapshot of this sex-biased admixture in progress^{17–20}. The latest ancient sample, *TAN001*, shows similar autosomal admixture proportions to contemporary ni-Vanuatu, and carries a Papuan mtDNA haplogroup and Polynesian Y-chromosome haplogroup (*P1d1* and *O2a2b2a*, respectively).

To identify potential source populations of post-Lapita Near Oceanian ancestry we calculated D -statistics³⁰ on the new ancient Vanuatu data, down-sampled to the more geographically extensive HO dataset (Supplementary table 9). Using the model $D(\text{Near Oceanian}, \text{New Guinea}; \text{Vanuatu ancient}, \text{Mbuti})$, where *Near Oceanian* is drawn from all potential sources reported in ref. 21, we identified Baining Marabu and Baining Malasait in New Britain, Bismarck Archipelago (Fig. 1b) as the closest present-day proxy sources of Near Oceanian ancestry in the ancient Vanuatu individuals ($Z > 0$). One possible confounding factor is the significant difference in the levels of Austronesian ancestry in Baining populations compared to New Guinea Papuans shown by $D(\text{Baining Marabu or Baining Malasait}, \text{New Guinea}; \text{Ami}, \text{Mbuti})$: $Z = 3.7$ or 4.2 . However, *TAN002* does not show such an attraction to *Ami*, confirming that its affinity to Baining relative to Papuans is not explained by shared Austronesian ancestry (Supplementary table 9). Furthermore, although Denisovan admixture levels are observed to decline with increased Austronesian ancestry proportion³⁷, the best-supported source populations have values consistent with New Guinea Papuans ($D(\text{Baining Marabu or Baining Malasait}, \text{New Guinea}; \text{Denisovan}, \text{Mbuti})$: $Z = -0.8$ or -1.9). Thus, D -statistics confirm the close relationship observed in PCA between Baining populations and the earliest Vanuatu individual carrying Near Oceanian ancestry (*TAN002*), despite the immense geographical distance (Fig. 1a,b).

*qpGraph*³⁰ analyses (Fig. 3a) showed that *TAN002* could be modeled as an unadmixed individual descended from a population ancestral to modern *Baining Marabu*, before the latter receives a 4% Austronesian contribution. In Vanuatu, a population associated with *TAN002* would admix with local Lapita people (proxied by *Ami*) giving rise to ancient Malakula individuals ~2,500-2,000y BP. Additional Papuan admixture is needed to account for the lower Austronesian proportion in the ~1,100y BP Futuna population (Fig. 2b, Supplementary table 8, Supplementary figure 3). The most recent ancient individual *TAN001* can only be modeled as descended directly from a Baining-related population, suggesting complete local population replacement. We were unable to fit present-day Vanuatu HO alongside the new ancient samples in a single model (Supplementary figure 4), indicating that present-day ni-Vanuatu may carry an additional genetic component not found in ancient populations.

Different genetic trajectory in Polynesia

Analyses of two new Lapita individuals (*TON001*, *TON002*) from the Talasiu site in Tonga²¹, confirmed their genetic similarity to early peoples in Vanuatu (Fig. 1a). Notably, *TON002* is a male carrying Y-chromosome haplogroup *O1a1a1a*, providing direct evidence that this clade – like the “*Polynesian mtDNA motif*” haplogroup *B4a1a1a* – was associated with the Austronesian expansion³⁸. After Lapita settlement, the populations of Vanuatu and Tonga appear to follow a considerably different genetic trajectory; PCA analyses indicate that present-day Tongans fall between the East Asian and Near Oceanian clines (Fig. 1a, Supplementary figure 5), more specifically between Lapita individuals and Solomon Islanders. A newly sequenced ancient Tongan female sample (*LHA001*), from 780-550y BP, lay relatively close in PCA to modern Tongans, but its lower affinity to Solomon Islanders suggests that modern Tongan ancestry was not yet completely in place by this time ($D(\text{LHA001}, \text{Tongan}, \text{Savo}, \text{Mbuti})$: $Z = -3$).

We obtained genome-wide data from three individuals unearthed at the monumental site Taputapu tea (*TAP002*, *TAP003*, *TAP004*) on the island of Ra'i tea, French Polynesia dated to the time of European contact in the 18th century AD39. *ADMIXTURE*³⁴ analyses (Fig. 2a) show these individuals have major *Austronesian* (blue) and minor *Papuan* (green) ancestry components, and both carry typical Polynesian mtDNA haplogroups (Table 1). In PCA space they fall in close proximity to the Tongan individual *LHA001* – slightly more towards the East Asian cline – suggesting that the population expansion to East Polynesia ~900-800y BP40 may have originated in western Polynesia. *ADMIXTURE* analyses ($K=4$) on a subset of HO data – including 454 present-day and 13 ancient Near and Remote Oceanian individuals (Supplementary figure 5) – show that present-day ni-Vanuatu carry a heterogeneous proportion of three major components that are maximized in Near Oceanian populations (Papuan, Baining and Bougainville), with a minor Lapita-related component (Supplementary figure 5). Conversely, present-day Tongans have substantial Lapita ancestry, with a minor component of Near Oceanian admixture (with different proportions of Papuan, Baining and Bougainville) (Supplementary figure 5). *qpAdm* analyses further support modeling modern Tongans as a two-way admixture between ancestral Austronesians and a population ancestral to some present-day Solomon Island groups – such as Malaita and Makira – or represented by the ~500y BP Malaita individual (*MAI002*), even when Papuan and Bismarck are included as an additional outgroup (Supplementary table 10). Thus, Solomon Islanders alone can explain the Near Oceanian ancestry found in Tongans, without contribution from New Guinea Papuans. This higher affinity to Solomon Islanders provides evidence that, post-Lapita, Tonga likely received its Near Oceanian ancestry from a different source than did Vanuatu.

Genetic cline in present-day Vanuatu

We analyzed the new ancient and modern data alongside a dataset from Remote Oceania³², which includes 754 individuals from New Caledonia, Vanuatu, Fiji and Tonga (Supplementary table 6), genotyped on the *HumanCore-24 BeadChip*, with ~160K and ~50K SNP overlap with the *1240K* and HO data, respectively. After removing individuals with genetic evidence of non-autochthonous ancestry, PCA and *ADMIXTURE* analyses (Supplementary figure 6 and Supplementary figure 7) demonstrated high genetic diversity in ni-Vanuatu from the islands of Santo and Maewo (north of Malakula, Supplementary figure 2), with these individuals laying on a cline running from close to New Britain, through Vanuatu, New Caledonia and Fiji, towards present-day Tonga. The new Vanuatu HO data from the islands of Malakula and Efate (Supplementary figure 2), and the most recent ancient Tanna individual (*TAN001*), lay overwhelmingly towards the New Britain end of this cline. Down-sampled to ~50K SNPs, the different trajectories for post-Lapita Vanuatu and Tonga populations identified in the HO analyses are less distinguishable. We used *D*-statistics to test whether this cline describes a separate demographic process to that which brought Bismarck-like ancestry to Vanuatu (Methods) but – at the resolution of currently available regional genotyping data – we are unable to distinguish between the two clines with confidence (Supplementary figure 8), suggesting that a Tongan-like ancestry may have played some role in the formation of present-day genetic diversity in Vanuatu. However, the HO analyses demonstrate that present-day Tongan ancestry, forming one end of this cline,

was not fully in place prior to ~780-550y BP (*LHA001*), so this influence may be significantly later than the initial arrival of Bismarck ancestry in Malakula (~2,500y BP).

Austronesian-Papuan admixture date estimation

We performed *ALDER*³³ analyses on both modern and ancient Vanuatu data to gain independent estimates of arrival times for the Papuan ancestry component. We obtain an estimate of 60.7 ± 8.2 generations BP for the 27 HO Vanuatu individuals, which – assuming a 28.1 year generation-time²¹ – equates to $1,705 \pm 232$ y BP (Fig. 3b, Methods). Interestingly, admixture time estimates similarly obtained for ancient Vanuatu provided 51.2 ± 17 generations for three Futuna individuals (*FUT002*, *FUT006* and *FUT007*) and 5.6 ± 1.8 generations for three ancient Malakula individuals (*MAL002*, *MAL004* and *MAL007*). Accounting for ancient sample ages, the admixture date is estimated at $2,560 \pm 477$ y BP for Futuna and $2,451 \pm 51$ y BP for Malakula, coinciding with the latest presence of individuals in the new Vanuatu time-transect with unadmixed Papuan (*TAN002*) or Austronesian (*MAL006*) ancestry (Fig. 3b). *ALDER* analyses of the Parks *et al.*³² data gave dates ranging from $1,569 \pm 79$ y BP (Fiji) to $1,999 \pm 101$ y BP (Port Olry, Vanuatu), overlapping the interval proposed by Skoglund *et al.*²¹, yet still significantly later than the directly dated admixed ancient individuals in Malakula (Supplementary figure 9).

Discussion

The population history of Remote Oceania is relatively short but these early stages appear complex, particularly in Vanuatu. New genome-wide aDNA data directly demonstrates the presence of Papuan peoples in Remote Oceania far earlier than estimated with present-day regional genome-wide data (Supplementary figure 9, and ref. 21), with unadmixed Bismarck-like individuals apparent in Vanuatu as early as ~2,500y BP, possibly contemporaneous with the end of the Lapita horizon. The new HO data from contemporary Malakula and Efate shows that while Oceanic speaking Lapita peoples were genetically replaced by a population closely related to Papuan-speaking Baining people, present-day ni-Vanuatu continue to speak Oceanic languages. The almost complete replacement of a population's genetic ancestry that leaves the original languages *in situ* is extremely rare – possibly without precedent – in human history and requires explanation. Alongside linguistic and archaeological evidence, our aDNA analyses provide a plausible and compelling model for this language continuity, namely an extended and incremental process of population replacement by peoples from the Bismarck Archipelago (Fig. 3a), rather than a single massive turnover event that would likely have brought a shift from Oceanic to Papuan languages.

The >120 languages spoken today in Vanuatu – *per capita* the most linguistically diverse place on Earth – are exclusively Oceanic¹⁴, yet many aberrant, seemingly Papuan, linguistic features are evident⁴¹. These include quinary numeral systems, rounded labial phonemes, dual exclusion of *p* and *c* phonemes, and serial verb construction^{42–45}. These features are heterogeneously distributed across Vanuatu^{42–44}, extremely rare or absent in other Austronesian languages and are shared almost exclusively with Papuan languages (e.g. Supplementary figure 10). A number of ethnographically attested cultural practices or

artifacts also share this near exclusive distribution, including large nasal piercing ornaments, penis sheaths, head-binding and the rearing of full-circle tusker pigs^{46,42}. These shared cultural and linguistic features provide further support for the Baining-Papuan genetic connection we identify. While some linguists argue for a single admixed expansion into Vanuatu from Near Oceania⁴⁷, or Papuan involvement in initial Lapita settlement⁴³, others propose a 2-wave model⁴², where an initial unadmixed proto-Oceanic-speaking population arrive, followed closely by a separate Papuan-speaking expansion. The latter⁴² is supported because the putative Papuan linguistic features found in Vanuatu cannot be reconstructed for proto-Oceanic, and their marked deviation from most other Oceanic languages suggests development within Vanuatu^{42–44}. Some features can be reconstructed for the proto languages of Vanuatu – rounded labials and the *p/c* gap for Proto-North-Central Vanuatu⁴⁸, and quinary numeral systems for Proto-Southern Vanuatu⁴⁹ – pointing to their early development and strongly supporting early Papuan influence. An undifferentiated proto-Oceanic operating as a *lingua franca* for linguistically diverse Papuan migrant groups could explain⁴² the continuity of Oceanic languages in the face of secondary Papuan expansion.

Our aDNA analyses lend direct support to this historical linguistic model⁴². Indeed, some archaeologists have argued that the process by which Papuans made their way into Remote Oceania was strikingly different to the initial arrival of Lapita people²³, suggesting a continuing process of long-distance interaction rather than a simple dispersal event. One element of this process – namely the sex-biased admixture inferred from present-day South Pacific populations e.g.^{13,21} – is already becoming clearer, with such genetically admixed ancient individuals (e.g. *MAL004*) observed shortly after the very earliest arrival of Near Oceanian peoples in Remote Oceania (Fig. 2b, Supplementary table 8). We show that initially genetically homogeneous Lapita peoples in Vanuatu and Tonga²¹ follow strikingly different post-Lapita population trajectories, reflected in the clear cultural separation seen in the archaeological record. As a defined stylistic horizon, Lapita lasted only a few hundred years after settlement – local differentiation in pottery design beginning ~2,700y BP suggests significant fragmentation of the previously well-connected Lapita peoples²³. In central Vanuatu, the appearance of the incised Erueti ceramic complex ~2,550y BP⁵⁰ seems to parallel a contemporaneous stylistic shift across island Melanesia post-Lapita, including both New Caledonia and the Bismarck Archipelago³. It is an intriguing possibility that the early arrival of Bismarck-like people we now directly observe in Vanuatu may have exacerbated – even triggered – the process of Lapita fragmentation²³ and the ongoing long-distance interactions we uncover may also have influenced the convergent processes of stylistic diversification^{3,50} found in pottery sequences across the region.

Our analysis of present-day Remote Oceanian data³² suggests a possible Tongan-like influence on the genetic diversity of present-day eastern Melanesia, with populations in northern Vanuatu, New Caledonia and Fiji lying on a cline towards modern Tonga (Supplementary figure 6). Given the data resolution, we were unable to clearly distinguish this from the other cline formed by the post-Lapita population trajectory in Vanuatu (Fig. 1a), but the ancient Tongan individual *LHA001* suggests that it formed later. One possibility is that this genetic structure was influenced by interactions with western Polynesia leading to the many *Polynesian outlier* communities – characterized by retention of various Polynesian linguistic features, cultural practices and genetic ancestry³ – distributed across Micronesia,

New Guinea, the Solomon Islands, New Caledonia and Vanuatu. While the timing, scale and impact of this westward Polynesian migration is not yet precisely estimated, it likely coincided with the initial colonization of eastern Polynesia ~900-800y BP40.

In conclusion, our analyses of Vanuatu genome-wide data – both ancient and modern – combined with linguistic and archaeological evidence, strongly support a model of interaction and incremental admixture between Lapita-Austronesian peoples and incoming Bismarck Islanders that lead to an eventual population turnover, but left the pre-existing Oceanic languages in place. This multidisciplinary work has begun to uncover the complex, localized demographic processes that drove the initial colonization of the wider South Pacific and formed the enduring cultural and linguistic spheres that continue to shape the Pacific today.

Methods

Ancient and modern-day DNA processing

Ancient DNA sampling—All samples were processed in dedicated laboratories at the Max Planck Institute for the Science of Human History in Jena, Germany. Bone powder for DNA extraction was obtained from petrous bones by drilling the densest osseous matter around the cochlea and from teeth by cutting at the junction between root and crown and sampling the dental pulp. For detailed information on the analyzed samples, their archaeological context and radiocarbon age see Supplementary text, Supplementary table 1, Supplementary table 2, Fig. 1 and Supplementary figure 2.

Extraction—DNA from the 23 ancient individuals was extracted following established protocols²⁴, negative and cave bear positive controls were included. To release DNA from 50-100mg of bone powder a solution of 900µl EDTA, 75µL H₂O and 25µL Proteinase K was added. In a rotator, samples were digested for at least 16 hours at 37°C, followed by an additional hour at 56°C⁵¹. The suspension was then centrifuged and transferred into a binding buffer as previously described²⁴. To bind DNA, silica columns for high volumes (High Pure Viral Nucleic Acid Large Volume Kit, Roche) were used. After two washing steps using the manufacturer's wash buffer, DNA was eluted in TET (10mM Tris, 1mM EDTA and 0.05% Tween) in two steps for a final volume of 100µl.

Library Preparation—For aDNA authentication and contamination estimates screening DNA libraries were built from 20µl of DNA extract in the absence of uracil DNA glycosylase (non-UDG libraries), following a double stranded library preparation protocol²⁵. After assessing human DNA contamination levels, one or two additional 25µl aliquots of DNA extract were transformed either into non-UDG libraries²⁵ or into “UDG-half” double-stranded libraries with a protocol that makes use of the UDG enzyme to reduce but not eliminate the amount of deamination induced damage towards the end of aDNA fragments²⁶. Negative and positive controls were carried out alongside each experiment. Libraries were quantified using the IS7 and IS8 primers²⁵ in a quantification assay with DyNAmo SYBP Green qPCR kit (Thermo Scientific) on the Lightcycler 480 Roche. Each aDNA library was double indexed⁵¹ in one to four parallel 100µl reactions using PfuTurbo DNA Polymerase (Agilent Technologies). The indexed products for each library were

pooled, purified over MinElute columns (Qiagen), eluted in 50 μ L TET and again quantified using the IS5 and IS6 primers²⁵ with the quantification method described above. Four microliters of the purified product were amplified in multiple 100 μ L reactions using Herculanase II Fusion Polymerase (Agilent) following the manufacturer's specifications with 0.3 μ M of the IS5/IS6 primers. After another MinElute purification, the product was quantified using the Agilent 2100 Bioanalyzer DNA 1000 chip. An equimolar pool of all libraries was then prepared for shotgun sequencing on Illumina platforms.

Enrichment—Both UDG-half and non-UDG treated libraries were further amplified with IS5/IS6 primers to reach a concentration of 200-400ng/ μ L as measured on a NanoDropTM spectrophotometer (Thermo Fisher Scientific). mtDNA capture²⁷ was performed on screened libraries that after shotgun sequencing showed the presence of aDNA, highlighted by the typical CtoT and GtoA substitution pattern towards 5' and 3' molecule ends, respectively. Furthermore, samples with a percentage of human DNA in shotgun data around 0.1% or greater were enriched⁵³ for a list of 1,237,207 targeted SNPs across the human genome (*1240K* capture)²⁸.

Sequencing—The enriched DNA product was sequenced on an Illumina HiSeq 4000 instrument with 75 cycles single-end or 50 cycles pair-end runs (for *TAN001* and *FUT006*) using the manufacturer's protocol. The output was de-multiplexed using *bcl2fastq v2.17.1.14* and *dnacust v3.0.0*.

Modern DNA sampling—Genetic sampling was carried out as part of a long-term linguistic and anthropological fieldwork project, directed by Prof. Russell Gray and Dr. Heidi Colleran at the Max Planck Institute for the Science of Human History (<http://www.shh.mpg.de/456217/vanuatu-languages-lifeways>). The saliva samples of 27 present-day ni-Vanuatu from the islands of Malakula and Efate were collected using the Oragene OG-500 saliva collection kit. Ethical approval for this work was granted by the Ethik-Kommission der Friedrich-Schiller-Universität in Jena, Germany, and we obtained research permission from the Vanuatu Kaljoral Senta, the institution that regulates all research in the country. Sampling was carried out in 5 communities that are already participating in the linguistic and anthropological project, and all participants gave documented informed consent and were provided the means to withdraw from the study if required.

Modern DNA extraction and library preparation—Extraction and library preparation were performed in the molecular biology laboratories of the Max Planck Institute for the Science of Human History in Jena, Germany. Modern-day DNA was extracted from the Oragene kit following the manufacturer's protocols with the only modifications that 600 μ L of sample volume was used accordingly adjusting the following reaction volumes. 10 μ L of eight modern-day DNA extracts (Supplementary table 5) were used to build double-stranded DNA libraries²⁵. They were then indexed in one reaction following the same protocols mentioned above, pooled equimolarly and shotgun sequenced on an Illumina HiSeq 4000 instrument (75 cycles single-end run).

Genotyping of present-day humans—The company Atlas Biolabs in Berlin, Germany genotyped 27 modern DNA extracts on the Axiom Genome-Wide Human Origins array.

After checking DNA quality and quantity on both a 1% Agarose gel and a NanoDrop, samples were adjusted to 20ng/μl using a Qubit high sensitivity kit (Thermo Fisher Scientific), loaded on the Axiom Genome-Wide Human Origins array (Affymetrix) and genotyped on a GeneTitan. Genotyping was performed using the Affymetrix Genotyping Console, and all individuals had >94% genotyping completeness.

Genomic data processing—Pre-processing of the sequenced reads was performed using *EAGER v1.92.4454*. Reads resulting from the sequencing of modern and ancient DNA libraries were clipped to remove residual adaptor sequences using *Clip&Merge54* and *AdapterRemoval v255*, respectively. Clipped sequences were then mapped against the human reference genome *hg19* using BWA56 turning seeding off and with the *-n* parameter set to 0.01. Duplicates were removed with *DeDup54* that removes reads with identical start and end coordinates. Additionally a mapping quality filter of 30 was applied using *samtools57*. Alignment files were filtered for reads showing the presence of likely deaminated bases as the result of post-mortem damage (PMD) using *pmdtools v0.6058*. Both damage restricted and non-restricted sequences from either non-UDG or UDG-half libraries were trimmed for the first and last three positions in order to reduce the impact of deamination induced miss-incorporations during genotyping. Trimmed reads were genotyped using *pileupCaller* (<https://github.com/stschiff/sequenceTools/tree/master/src-pileupCaller>) a tool that randomly draws one allele at each of the 1240K targeted SNPs covered at least once. The generated pseudo-haloid calls for 19 ancient Pacific individuals (Table 1) were merged to a pull-down of the 1240K SNPs from the Simon Genome Diversity Project (SGDP)31, eight shotgun sequenced modern-day individuals from Vanuatu and four previously published 1240K captured individuals associated with the Lapita culture from Vanuatu and Tonga21. Moreover the newly generated capture data for the ancient individuals as well as 27 genotyped modern-day individuals (Supplementary table 5) were merged to the ~600K SNPs of the *Human Origins* (HO) dataset21,30.

Authentication of ancient DNA

In the field of aDNA several methods have been developed to assess authenticity of the retrieved DNA29. First, the typical features of aDNA were inspected with *DamageProfiler* (<https://bintray.com/apeltzer/EAGER/DamageProfiler>), e.g. short average fragment length (~40-70bp) and an increased proportion of miscoding lesions due to deamination at the molecule termini (Supplementary table 3). Sex determination was performed by comparing the coverage on the targeted X-chromosome SNPs (~50K positions within the 1240K capture) normalized by the coverage on the targeted autosomal SNPs to the coverage on the Y-chromosome SNPs (~30K), again normalized by the coverage on the autosomal SNPs59 (Table 1). Individuals falling in an intermediate position between male and female are assigned to undetermined sex and indicate the presence of present-day DNA contamination. For male individuals *ANGSD* was run to measure the rate of heterozygosity of polymorphic sites on the X-chromosome after accounting for sequencing errors in the flanking regions60. This provides an estimate of nuclear contamination in males that are expected to have only one allele at each site. For all male samples that exhibit X-chromosome contamination levels below 2% with at least 100 X-chromosome SNPs covered twice, all reads were retained for further analyses (Supplementary table 4). Otherwise only PMD fragments that are likely of

endogenous origin were used⁶¹ (Table 1). For both male and female individuals mtDNA captured data was used to jointly reconstruct the mtDNA consensus sequence and estimate contamination levels with *schmutzi*⁶² (Supplementary table 11). For specimens where a relatively low proportion of mtDNA molecules compared to nuclear DNA (mt/nuclear DNA ratio) was observed (Supplementary table 11), mtDNA contamination estimate can be used as reliable predictor for nuclear contamination²⁹. Population genetic analyses on samples presenting mtDNA levels of contamination above 4% were restricted to PMD fragments. Moreover, for each individual the positioning in PCA space was compared to the data after restriction to deaminated sequences²¹. Samples that were substantially displaced in PCA space (Supplementary figure 1) were restricted to PMD fragments for population genetic analyses.

Population genetic analyses

PCA were computed with present-day populations from the HO dataset composed of 781 Oceanians and East Asians²¹ and 27 modern-day Vanuatu individuals newly genotyped here, for a total of 808 individuals. Ancient individuals were projected onto the two first components using *smartpca* (*v13050*)⁶³ with the options “*Isqproject: YES*” and “*numoutlieriter: 0*” (Fig. 1 and Supplementary figure 1). Another PCA was computed on the ~50K SNPs overlapping the HO dataset and a recently published *Illumina HumanCore-24* dataset (typed on ~240K SNPs in total)³² (Supplementary figure 6). The same 808 modern-day Oceanians and East Asians were used to build the principal components on which 669 individuals across Remote Oceania (Supplementary table 6) and 15 ancient Pacific individuals with more than 6K SNPs were projected. The software *ADMIXTURE v1.3.034* was run in unsupervised mode on high coverage genomes of 308 modern-day worldwide individuals³¹, eight shotgun sequenced present-day Vanuatu individuals and all 23 ancient Pacific individuals. Only transversions sites of the *1240K* SNPs (~220K positions) were considered in order to reduce the impact on the clustering algorithm of residual damage still present in non-UDG treated libraries. An additional regional *ADMIXTURE* analysis was carried out also on the transversions subset of the HO data (~110K SNPs) including 13 ancient individuals from Vanuatu and Tonga (more than 15K SNPs) and 454 modern-day Oceanian individuals (Supplementary figure 5). Finally, *ADMIXTURE* was run on the overlapping SNPs between HO and Parks *et al.*³² datasets for the 27 newly genotyped present-day individuals from Malakula and Efate in Vanuatu (Supplementary table 5) in addition to 754 present-day individuals from New Caledonia, Vanuatu, Fiji and Tonga (Supplementary figure 7). From the latter dataset 85 individuals harboring more than 2% of non-local ancestry at $K=5$ were removed for a total of 669 individuals retained (Supplementary table 6). In the following analyses all SNPs were investigated for individuals with UDG-half libraries whereas only transversion SNPs were used for individuals with non-UDG libraries to avoid spurious results originating from leftover aDNA damage.

D -statistics were calculated with *qpDstats v711* program from the *ADMIXTOOL* suite (<https://github.com/DReichLab>) in the form $D(Pop1, Pop2; Pop3, Outgroup)$. A negative value implies that either *Pop1* and *Outgroup*, or *Pop2* and *Pop3* share more alleles than expected under the null hypothesis of a symmetrical relationship between *Pop1* and *Pop2*

(Supplementary table 9). To jointly observe the affinity of modern-day Fiji, Tonga, New Caledonia and Vanuatu individuals from Parks *et al.*³² and HO datasets as well as ancient Vanuatu individuals towards Ami and Tonga populations, we calculated two sets of D -statistics in the form A: $D(\text{Baining}, X; \text{Ami}, \text{Mbuti})$ and B: $D(\text{Baining}, X; \text{modern Tongan}, \text{Mbuti})$, where X is drawn from *Fiji, Tonga, Maewo (Vanuatu), Port Olry (Vanuatu), Santo (Vanuatu)* and *New Caledonia* from Parks *et al.*³², as well as the Vanuatu HO and ancient Malakula, Futuna and Tanna samples. Plotting A against B (Supplementary figure 8) shows that we cannot see a clear deviation between modern and ancient individuals, as all values do not appreciably differ from the straight line expected for no differential ancestry.

qpWave v40035 was implemented on the HO dataset in order to test if the ancient individuals are consistent with two sources of ancestry represented by modern-day Ami (as the best proxy for ancestral Austronesian) and Papuan individuals, with respect to a set of outgroups (*Mbuti, Denisovan, Sardinian, English, Yakut, Chukchi, Mala, Japanese, Ju_hoan_North, Mixe, Onge, Yoruba*). This is obtained when rank $n-1$ cannot be rejected ($p > 0.05$) as shown for all our ancient Vanuatu individuals, as well as modern Vanuatu HO individuals despite a much lower p -value (Supplementary table 7). The same populations for both HO and *1240K* datasets were then used in *qpAdm v61036* to estimate admixture proportions for ancient and modern-day Vanuatu individuals (Supplementary figure 3, Fig. 2b and Supplementary table 8). *qpAdm* models each individual as a mixture of Ami and Papuan by fitting admixture proportions that match the observed matrix of f_4 -statistics and computing standard errors with a block jackknife. To evaluate potential sex bias admixture, *qpAdm* analysis, as described above, was run only on X-chromosome SNPs (option “*chrom: 23*”) of the *1240K* dataset. Differences in admixture proportions between autosomal and X-chromosome SNPs provide an indication of sex-biased admixture (Supplementary table 8).

Modern-day Tongans were modeled in *qpAdm* as resulting from a two-way admixture between Ami (as the best proxy for ancestral Austronesian) and ancient (*MAI002*) or modern-day Solomon Islanders from the island of Makira, Malaita and Bougainville (Naisoi and Choiseul populations). When selecting the 12 outgroups listed above, Tongans can successfully be modeled with $p > 0.05$, using a block jackknife to calculate standard errors as indicated previously. *qpAdm* was re-run expanding the outgroup population list with Papuan and Baining Marabu. For present-day individuals from Makira, Malaita and the ancient individual from Malaita (*MAI002*) rank $n-1$ can still not be rejected, indicating that additional Papuan New Guinea or Bismarck ancestry is not necessary to model modern-day Tongans (Supplementary table 10).

Admixture dates were estimated based on linkage disequilibrium using *ALDER33* on the ~160K overlapping SNPs between *1240K* capture and Parks *et al.*³² datasets. As source populations, 20 Asian (Ami, Atayal, Igorot, Kinh, Dai, She, Lahu, Han) and 16 Papuan individuals were chosen. The estimated dates of admixture were converted into years assuming a generation time of 28.1 years^{21,64} for the 27 Vanuatu HO individuals (Fig. 3b) and for modern-day New Caledonia, Vanuatu, Fiji and Tonga populations³² (Supplementary figure 9). Admixture dates were also estimated for SNPs overlapping to the *1240K* capture for three ancient Futuna individuals (*FUT002, FUT006, FUT007*) with average age set to

1,123y BP and three ancient Malakula individuals (*MAL002*, *MAL004*, *MAL007*) with average age set to 2,293y BP (Fig. 3b).

Admixture graphs on the HO dataset were fitted with *qpGraph v521130,65* that matches a matrix of F -statistics testing the relationships between all analyzed populations at the same time. An initial backbone graph modern-day populations without signs of admixture were built into the tree (Mbuti, Ami, New Guinea). The differential proportion of Denisovan ancestry between Mbuti-Ami and New Guinea populations⁶⁶ was not modeled here since this is accommodated in the graph by shifting the splitting point of the African Mbuti population. Baining Marabu was then incorporated as admixed between an Ami-related and a New Guinea-related lineage, as suggested from D -statistics analyses (Supplementary table 9). Ancient UDG-half individuals from Vanuatu (three Futuna individuals grouped, three Malakula individuals grouped and two Tanna individuals separately) were added chronologically one-by-one at each possible position of the graph reporting every time the highest D -statistic between the observed and fitted model and calculating the Z -score with a block jackknife. The graph reported in Fig. 3a is built with a total of 38,789 SNPs and fits the allele frequency relationships between modern-day and ancient individuals with all empirical F -statistics within the 3 standard error interval and only one significant D -statistic ($Z=2.6$). The modern-day Vanuatu HO population can be fitted as admixed between modern-day Baining Marabu and Ami-related populations but this relatively simple model with only four populations has already the worst Z -score, equal to 2.3 (Supplementary figure 4a). Moreover, we were unable to fit a modern-day HO Vanuatu population in the graph once ancient individuals are included, neither by replacing the ~200y BP *TAN001* individual (Supplementary figure 4b) nor modeling Vanuatu HO as deriving part of its ancestry from the ~1,100y BP Futuna population (Supplementary figure 4c) with the worst Z -score of 6 and 5.2, respectively.

Haplogroup assignment for uniparental markers

After enrichment of the libraries for the mitochondrial genome (mtDNA capture) reads were pre-processed in *EAGER v1.92.55* as described above and aligned to the mitochondrial reference genome (rCRS) using *CircularMapper*, a program that takes into account the circularity of the mtDNA⁵⁴. Contamination was estimated while assembling the mitochondrial genome using *schmutzi*⁶² with the parameters “--notusepredC –uselength”. Present-day human contamination estimates were performed using a comparative database of 197 modern-day worldwide mtDNAs provided with the software package. For the resulting sequences we filtered positions with likelihood above 20 or 30 (Supplementary table 11) and used *HaploGrep*²⁶⁷ to assign the corresponding mtDNA haplogroup. For the *FUT007* individual the mtDNA consensus sequence was reconstructed from the mtDNA off-target reads in the combined non-UDG and UDG-half *1240K* capture data (Table 1 and Supplementary table 11). Sequenced reads overlapping the Y-chromosome SNPs present in the *ISOGG* database *v11.349* (<http://www.isogg.org/tree>) were investigated to assign Y-chromosome haplogroups. *ANGSD*⁶⁰ was used to count ancestral and derived allele occurrence and perform a majority call for positions covered at least once. For this analysis UDG-half and no-UDG data were combined for each sample (Supplementary table 3). To avoid miss-assignments due to DNA damage, CtoT and GtoA mutations required a

minimum of two consistent nucleotides to be called. Haplogroup assignment was based on the most downstream SNP retrieved after evaluating the presence of upstream mutations along the related haplogroup phylogeny⁵⁹.

Data Availability

All newly reported ancient DNA data including nuclear DNA alignment files and mtDNA sequences are archived at the European Nucleotide Archive database (accession number PRJEB24810). Newly reported SNP genotyping and shotgun sequence data will be made available on request to H.C. (colleran@shh.mpg.de) and A.P. (powell@shh.mpg.de), subject to a signed agreement to restrict usage to anonymized non-medical studies of population history, as outlined in the ethics and consent documentation.

Supplementary Material

Refer to Web version on PubMed Central for supplementary material.

Acknowledgements

We would like to thank the communities in Malakula and Efate in Vanuatu who participated in this study, and particularly all sample donors. We are grateful to Mark Stoneking, Irina Pugach and Chuan-Chao Wang for comments, and to Guido Brandt, Raffaella Bianco and technicians at the Max Planck Institute for the Science of Human History for laboratory support. Archaeological investigations on Malakula, Vanuatu were funded by the Sasakawa Pacific Island Nations Fund, the Marsden Fund of the Royal Society of New Zealand (Fast-Start 9011/3602128; 04-U00-007), a National Geographic Scientific Research Grant (7738-04) and an Australian Research Council Discovery-Project Grant (DP0880789). Investigations on Tanna, Vanuatu, were supported by Australian Research Council Discovery-Project Grant (DP160103578). F.V. is funded by CNRS-UMR 7041, and A.P. is funded by European Research Council Starting Grant *Waves* (ERC758967).

References

1. Clarkson C, et al. Human occupation of northern Australia by 65,000 years ago. *Nature*. 2017; 547:306–310. [PubMed: 28726833]
2. Pawley A, Green R. Dating the dispersal of the Oceanic languages. *Ocean Linguist*. 1973; 12:1–67.
3. Kirch, PV. *On the road of the winds: An archaeological history of the Pacific islands before European contact*. Revised and expanded edition. Berkeley: University of California Press; 2017.
4. Blust RA. The prehistory of the Austronesian-speaking peoples: A view from language. *J World Prehist*. 1995; 9:453–510.
5. Gray RD, Drummond AJ, Greenhill SJ. Language phylogenies reveal expansion pulses and pauses in Pacific settlement. *Science*. 2009; 323:479–483. [PubMed: 19164742]
6. Blust, RA. *The Austronesian Languages*. ANU, Canberra: Research School of Pacific and Asian Studies; 2009.
7. Summerhayes GR, et al. Tamuarawai (EQS): An early Lapita Site on Emirau, New Ireland, PNG. *J Pacific Archaeology*. 2010; 1:62–75.
8. Sheppard PJ. Lapita colonization across the Near/Remote Oceania boundary. *Curr Anthropol*. 2011; 52:799–840.
9. Pugach I, et al. The gateway from Near into Remote Oceania: New insights from genome-wide data. *Mol Biol Evol*. 2018
10. Petchey FJ, Spriggs M, Bedford S, Valentin F, Buckley H. Radiocarbon dating of burials from the Teouma Lapita cemetery, Efate, Vanuatu. *J Archaeol Sci*. 2014; 50:227–242.
11. Sand, C. *Lapita Calédonien*. *Archéologie d'un premier peuplement insulaire océanien*. Paris: Société des Océanistes; 2010.

12. Burley D, Weisler MI, Zhao J-X. High precision U/Th dating of first Polynesian settlement. *PLoS ONE*. 2012; 7:e48769. [PubMed: 23144962]
13. Wollstein A, et al. Demographic history of Oceania inferred from genome-wide data. *Curr Biol*. 2010; 20:1983–1992. [PubMed: 21074440]
14. Pawley, A., Attenborough, R., Golson, J., Hide, R. *Papuan pasts: cultural, linguistic and biological histories of Papuan-speaking peoples*. ANU: Pacific Linguistics; 2005.
15. Lynch, J., Ross, M., Crowley, T. *The Oceanic languages*. Richmond, UK: Curzon; 2002.
16. Kayser M, et al. Genome-wide analysis indicates more Asian than Melanesian ancestry of Polynesians. *Am J Hum Genet*. 2008; 82:194–198. [PubMed: 18179899]
17. Melton T, et al. Polynesian genetic affinities with Southeast Asian populations as identified by mtDNA analysis. *Am J Hum Genet*. 1995; 57:403–414. [PubMed: 7668267]
18. Kayser M, et al. Melanesian origin of Polynesian Y chromosomes. *Curr Biol*. 2000; 10:1237–1246. [PubMed: 11069104]
19. Hurler ME, et al. Y-chromosomal evidence for the origins of Oceanic-speaking peoples. *Genetics*. 2002; 160:289–303. [PubMed: 11805064]
20. Kayser M, et al. Melanesian and Asian origins of Polynesians: mtDNA and Y chromosome gradients across the Pacific. *Mol Biol Evol*. 2006; 23:2234–2244. [PubMed: 16923821]
21. Skoglund P, et al. Origins and genetic legacy of the first people in Remote Oceania. *Nature*. 2016; 538:510–513. [PubMed: 27698418]
22. Valentin F, Dérozier F, Spriggs M, Bedford S. Early Lapita skeletons from Vanuatu show Polynesian craniofacial shape: Implications for Remote Oceanic settlement and Lapita origins. *Proc Natl Acad Sci USA*. 2015; 113:292–297. [PubMed: 26712019]
23. Bedford, S., Spriggs, M. *The archaeology of Vanuatu: 3000 years of history across islands of ash and coral*. The Oxford Handbook of Prehistoric Oceania. Cochrane, E., Hunt, T., editors. Oxford: Oxford University Press; 2014.
24. Dabney J, et al. Complete mitochondrial genome sequence of a Middle Pleistocene cave bear reconstructed from ultrashort DNA fragments. *Proc Natl Acad Sci USA*. 2013; 110:15758–15763. [PubMed: 24019490]
25. Meyer M, Kircher M. Illumina sequencing library preparation for highly multiplexed target capture and sequencing. *Cold Spring Harb Protoc*. 2010; 6
26. Rohland N, Harney E, Mallick S, Nordenfelt S, Reich D. Partial uracil–DNA–glycosylase treatment for screening of ancient DNA. *Philos Trans Royal Soc B*. 2015; 370 20130624.
27. Fu Q, et al. A revised timescale for human evolution based on ancient mitochondrial genomes. *Curr Biol*. 2013; 23:553–559. [PubMed: 23523248]
28. Fu Q, et al. An early modern human from Romania with a recent Neanderthal ancestor. *Nature*. 2015; 524:216–219. [PubMed: 26098372]
29. Key FM, Posth C, Krause J, Herbig A, Bos KI. Mining metagenomic data sets for ancient DNA: Recommended protocols for authentication. *Trends Genet*. 2017; 33:508–520. [PubMed: 28688671]
30. Patterson N, et al. Ancient admixture in human history. *Genetics*. 2012; 192:1065–1093. [PubMed: 22960212]
31. Mallick S, et al. The Simons Genome Diversity Project: 300 genomes from 142 diverse populations. *Nature*. 2016; 538:201–206. [PubMed: 27654912]
32. Parks T, et al. Association between a common immunoglobulin heavy chain allele and rheumatic heart disease risk in Oceania. *Nat Commun*. 2017 14946.
33. Loh PR, et al. Inferring admixture histories of human populations using linkage disequilibrium. *Genetics*. 2013; 193:1233–1254. [PubMed: 23410830]
34. Alexander DH, Novembre J, Lange K. Fast model-based estimation of ancestry in unrelated individuals. *Genome Res*. 2009; 19:1655–1664. [PubMed: 19648217]
35. Reich D, et al. Reconstructing Native American population history. *Nature*. 2012; 488:370–374. [PubMed: 22801491]
36. Haak W, et al. Massive migration from the steppe was a source for Indo-European languages in Europe. *Nature*. 2015; 522:207–211. [PubMed: 25731166]

37. Reich D, et al. Denisova admixture and the first modern human dispersals into Southeast Asia and Oceania. *Am J Hum Genet.* 2011; 89:516–528. [PubMed: 21944045]
38. Mirabal S, et al. Increased Y-chromosome resolution of haplogroup O suggests genetic ties between the Ami aborigines of Taiwan and the Polynesian Islands of Samoa and Tonga. *Gene.* 2012; 492:339–348. [PubMed: 22079672]
39. Oliver, DL. *Ancient Tahitian Society: Ethnography.* Honolulu, HI: The University Press of Hawaii; 1974.
40. Wilmshurst JM, Hunt TL, Lipo CP, Anderson AJ. High-precision radiocarbon dating shows recent and rapid initial human colonization of East Polynesia. *Proc Natl Acad Sci USA.* 2011; 108:1815–1820. [PubMed: 21187404]
41. Blust R. Review of Lynch, Ross, and Crowley, “The Oceanic Languages”. *Ocean Linguist.* 2005; 44:544–548.
42. Blust R. Remote Melanesia: One history or two? An addendum to Donohue and Denham. *Ocean Linguist.* 2008; 47:445–459.
43. Donohue M, Denham T. The language of Lapita: Vanuatu and an early Papuan presence in the Pacific. *Ocean Linguist.* 2008; 47:365–376.
44. Lynch J. Melanesian diversity and Polynesian homogeneity: The other side of the coin. *Ocean Linguist.* 1981; 20:95–129.
45. Tryon, DT. *Austronesian languages. Melanesia: Beyond diversity.* May, RJ., Nelson, H., editors. ANU, Canberra: Research School of Pacific Studies; 1982.
46. Speiser, F. *Ethnology of Vanuatu. An early twentieth century study.* Bathurst: Crawford House Press; 1996.
47. Pawley A. Explaining the aberrant Austronesian languages of Southeast Melanesia: 150 years of debate. *J Polyn Soc.* 2006; 115:215–258.
48. Clark, R. **Leo Tuai: A comparative lexical study of north and central Vanuatu languages.* ANU, Canberra: Pacific Linguistics; 2009.
49. Lynch, J. *The linguistic history of southern Vanuatu.* ANU, Canberra: Pacific Linguistics; 2001.
50. Bedford, S. *Pieces of the Vanuatu Puzzle: Archaeology of the North, South and Centre.* Vol. 23. ANU Press; 2006. p. 157-192.
51. Rohland N, Hofreiter M. Ancient DNA extraction from bones and teeth. *Nat Protoc.* 2007; 2:1756–1762. [PubMed: 17641642]
52. Kircher M, Sawyer S, Meyer M. Double indexing overcomes inaccuracies in multiplex sequencing on the Illumina platform. *Nucleic Acids Res.* 2012; 40:e3. [PubMed: 22021376]
53. Fu Q, et al. DNA analysis of an early modern human from Tianyuan Cave, China. *Proc Natl Acad Sci USA.* 2013; 110:2223–2227. [PubMed: 23341637]
54. Peltzer A, et al. EAGER: efficient ancient genome reconstruction. *Genome Biol.* 2016; 17:60. [PubMed: 27036623]
55. Schubert M, Lindgreen S, Orlando L. *AdapterRemoval v2: rapid adapter trimming, identification, and read merging.* *BMC Res Notes.* 2016; 9:88. [PubMed: 26868221]
56. Li H, Durbin R. Fast and accurate short read alignment with Burrows-Wheeler transform. *Bioinformatics.* 2009; 25:1754–1760. [PubMed: 19451168]
57. Li H, et al. The Sequence Alignment/Map format and SAMtools. *Bioinformatics.* 2009; 25:2078–2079. [PubMed: 19505943]
58. Skoglund P, et al. Separating endogenous ancient DNA from modern day contamination in a Siberian Neandertal. *Proc Natl Acad Sci USA.* 2014; 111:2229–2234. [PubMed: 24469802]
59. Fu Q, et al. The genetic history of Ice Age Europe. *Nature.* 2016; 534:200–205. [PubMed: 27135931]
60. Korneliussen TS, Albrechtsen A, Nielsen R. *ANGSD: Analysis of Next Generation Sequencing Data.* *BMC Bioinformatics.* 2014; 15:356. [PubMed: 25420514]
61. Meyer M, et al. A mitochondrial genome sequence of a hominin from Sima de los Huesos. *Nature.* 2014; 505:403–406. [PubMed: 24305051]

62. Renaud G, Slon V, Duggan AT, Kelso J. *schmutzi*: estimation of contamination and endogenous mitochondrial consensus calling for ancient DNA. *Genome Biol.* 2015; 16:224. [PubMed: 26458810]
63. Price AL, et al. Principal components analysis corrects for stratification in genome-wide association studies. *Nat Genet.* 2006; 38:904–909. [PubMed: 16862161]
64. Moorjani P, et al. A genetic method for dating ancient genomes provides a direct estimate of human generation interval in the last 45,000 years. *Proc Natl Acad Sci USA.* 2016; 113:5652–5657. [PubMed: 27140627]
65. Reich D, Thangaraj K, Patterson N, Price AL, Singh L. Reconstructing Indian population history. *Nature.* 2009; 461:489–494. [PubMed: 19779445]
66. Reich D, et al. Genetic history of an archaic hominin group from Denisova Cave in Siberia. *Nature.* 2010; 468:1053–1060. [PubMed: 21179161]
67. Weissensteiner H, et al. HaploGrep 2: mitochondrial haplogroup classification in the era of high-throughput sequencing. *Nucleic Acids Res.* 2016; 44:W58–63. [PubMed: 27084951]

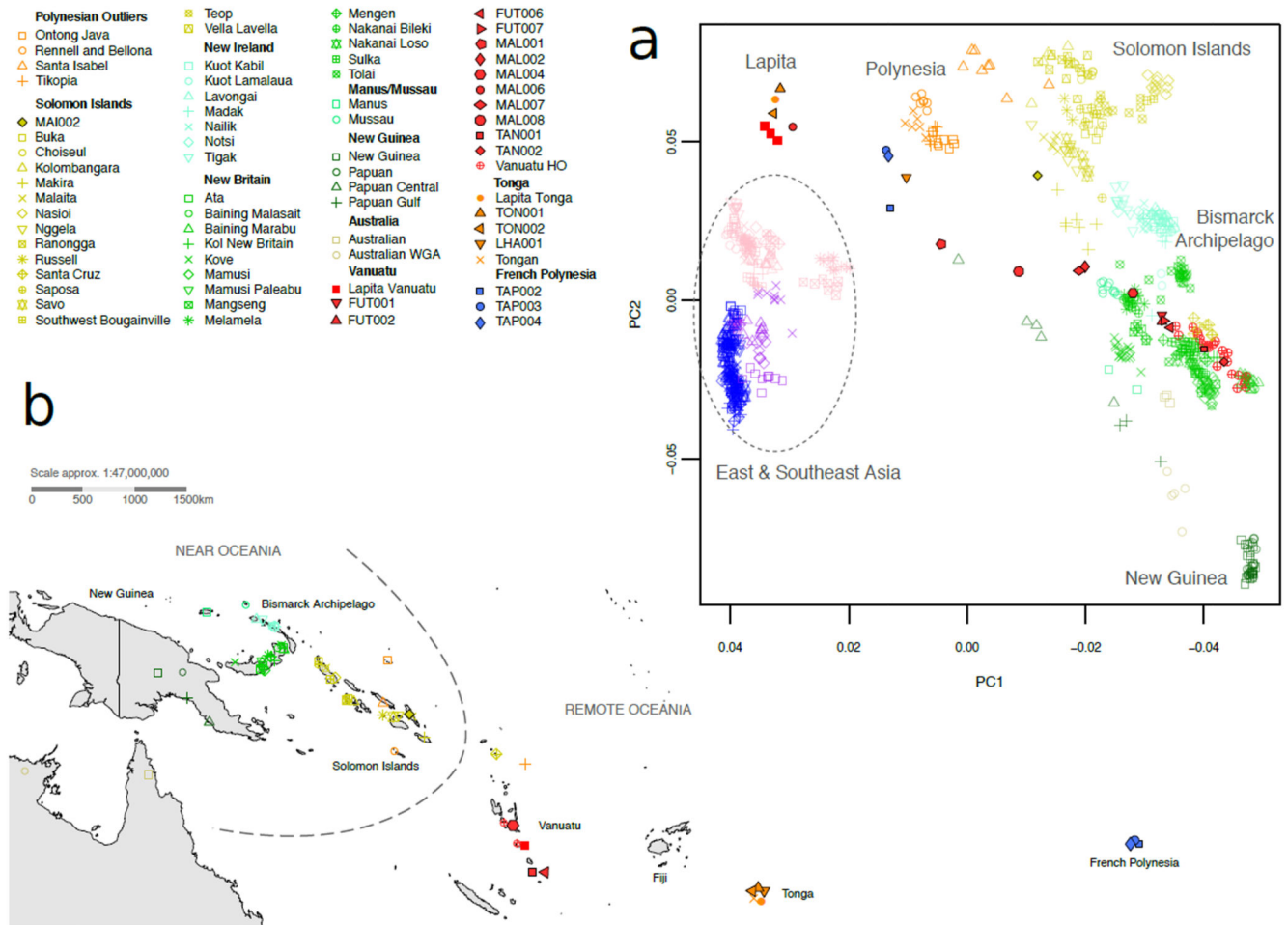


Fig. 1. Spatial and genetic distribution of ancient and present-day individuals. (a) Principal component analysis of modern-day East Asian and Near and Remote Oceanian populations genotyped on the *Affymetrix Human Origins Array*, with 23 ancient individuals projected. Ancient samples are indicated by filled symbols – the new data from this study have a black border – and present-day samples are indicated by open symbols. (b) Regional map, showing locations of Near and Remote Oceanian sample populations and ancient individuals.

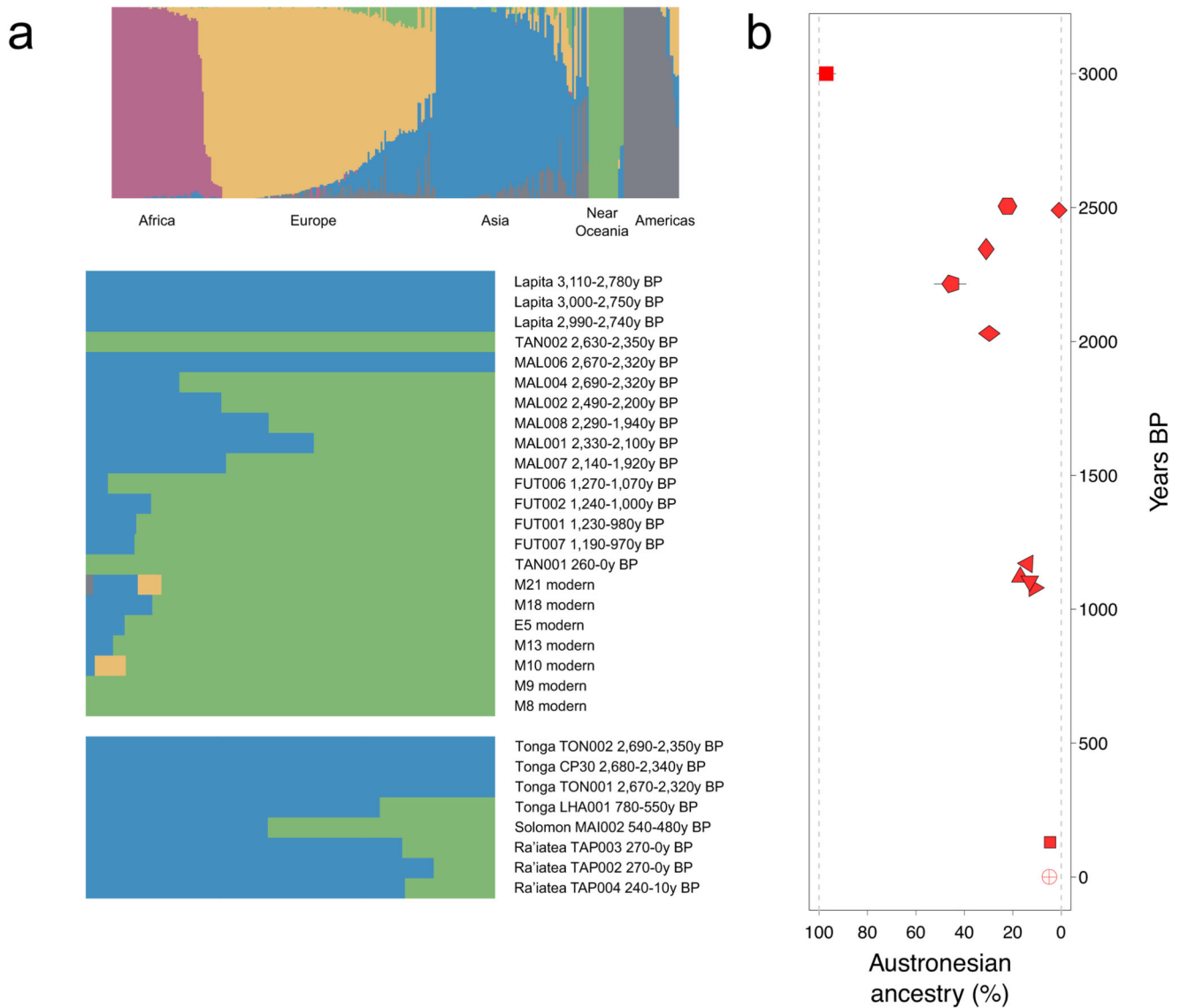


Fig. 2. Admixture proportions of Papuan- vs. Lapita-related ancestry in ancient and present-day populations using 1240K genome-wide data.

(a) Unsupervised *ADMIXTURE* analyses of present-day global populations and ancient Pacific individuals, with 5 ancestral components. (b) Austronesian ancestry proportion (modeled by indigenous Taiwanese population Ami) in ancient and present-day Vanuatu individuals estimated through *qpAdm* analyses. Symbol legend is given in Fig. 1, and standard errors are indicated by black lines if larger than the symbol (see also Supplementary table 8).

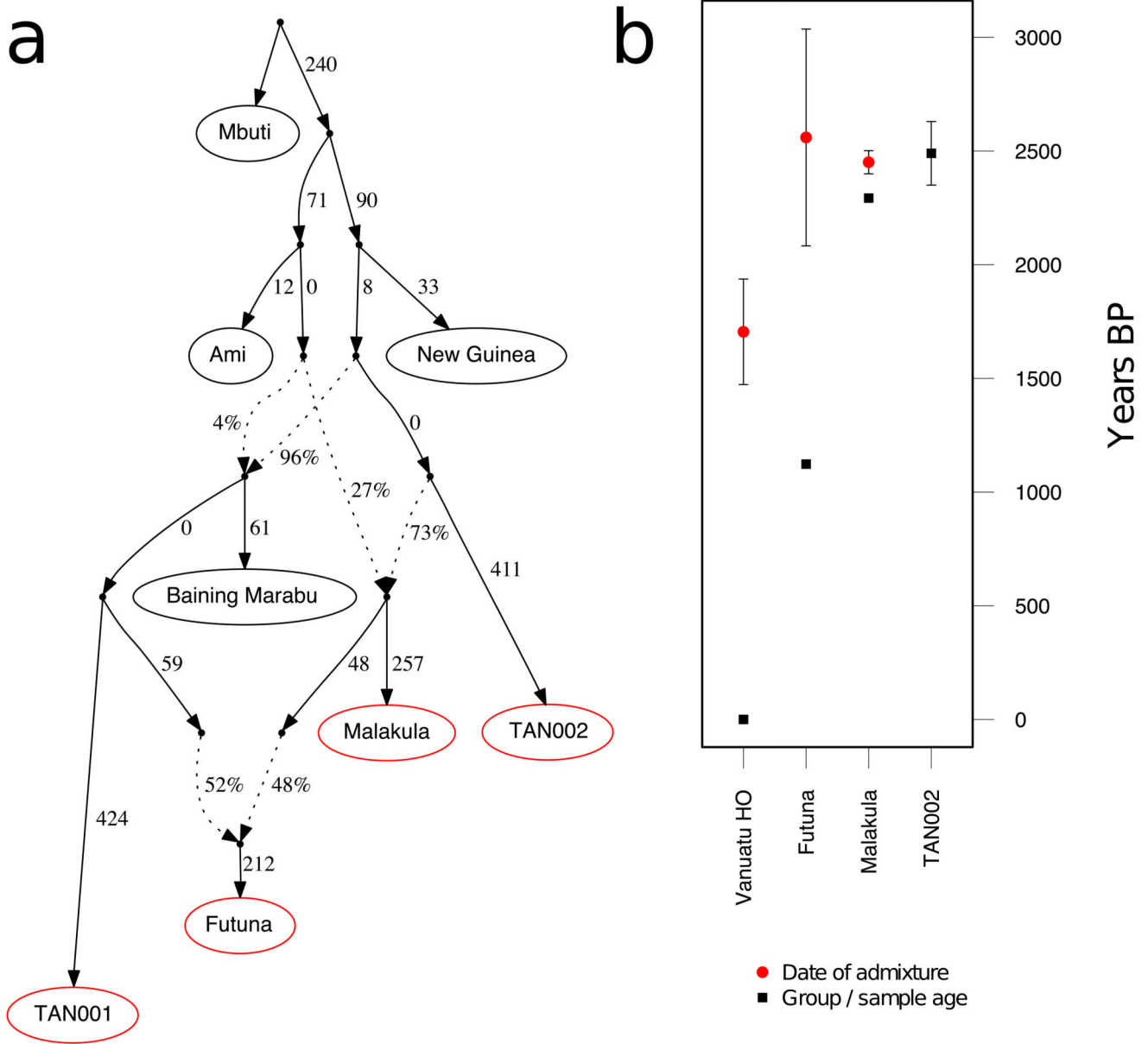


Fig. 3. Demographic history of ancient Vanuatu individuals. (a) *qpGraph* model that fits observed allele frequency patterns with branch lengths representing drift in $F_{ST} \times 1000$ units and edge percentages indicating admixture proportions. Ancient samples or groups are indicated with a red border. (b) *ALDER* analyses estimating the date of Papuan and East Asian admixture, converted into years with a generation time of 28.1 years. Standard error bars are shown for date estimates, while sample ages for the two ancient groups (Futuna and Malakula) are averaged radiocarbon dating confidence interval (CI) midpoints. As the earliest ancient Vanuatu individual with unadmixed Near Oceanian ancestry, *TAN002* is included for age comparison, with error bar indicating the 95.4% radiocarbon dating CI.

Table 1

Data description for the newly reported genome-wide data from 19 ancient individuals. Radiocarbon dating and ancient DNA summary statistics.

Sample Name	Country, Island	Anatomical element	cal BP (AD/BC) 95.4%	Sex	mtDNA haplogroup	Y chromosome haplogroup	Damage restrict	Mean coverage e1240K	SNPs 1240K	Library type
FUT001	Vanuatu, Futuna	L petrous	1230-980 (720-970 AD)	F	P1d2a	-	No	1.289	647,595	noUDG
FUT002	Vanuatu, Futuna	R petrous	1240-1000 (710-950 AD)	F	M28b1	-	No	1.163	626,821	UDGhalf
FUT006	Vanuatu, Futuna	L petrous	1270-1070 (680-880 AD)	M	P1d2a	K2	No	0.748	453,192	UDGhalf
FUT007	Vanuatu, Futuna	R petrous	1190-970 (760-980 AD)	M	M28b1	K2b1a3	No	0.596	392,622	UDGhalf
LHA001	Tonga, Tongatapu	Molar	780-550 (1170-1400 AD)	F	B4a1a1	-	Yes	0.048	37,058	UDGhalf
MAI002	Solomon Islands, Malaita	R Petrous	540-480 (1410-1470 AD)	F	B4a1a1a	-	No	5.582	913,583	noUDG
MAL001	Vanuatu, Malakula	L petrous	2330-2100 (380-150 BC)	F	B4a1a1	-	No	0.089	78,100	noUDG
MAL002	Vanuatu, Malakula	L petrous	2490-2200 (540-250 BC)	F	B4a1a1a	-	No	0.302	220,082	UDGhalf
MAL004	Vanuatu, Malakula	L petrous	2690-2320 (740-370 BC)	M	B4a1a1a	M1b	No	1.751	697,939	UDGhalf
MAL006	Vanuatu, Malakula	L petrous	2670-2320 (720-370 BC)	F	B4a1a1a11	-	Yes	0.011	10,418	noUDG
MAL007	Vanuatu, Malakula	R petrous	2140-1920 (190-30 BC)	F	B4a1a1a	-	No	0.609	394,207	UDGhalf
MAL008	Vanuatu, Malakula	L petrous	2290-1940 (350 BC - 10AD)	F	B4a1a1a	-	Yes	0.025	22,381	noUDG
TAN001	Vanuatu, Tanna	L petrous	260-0 (1690-1950 AD)	M	P1d1	O2a2b2a	No	1.223	629,733	UDGhalf
TAN002	Vanuatu, Tanna	R petrous	2630-2350 (680-400 BC)	M	Q2a	K2b1	No	0.241	191,304	UDGhalf
TIAP002	French Polynesia, Ra'iatea	Molar	270-10 (1680-1960 AD)	M	B4a1a1m1	n/a	Yes	0.041	39,897	noUDG
TIAP003	French Polynesia, Ra'iatea	Molar	270-10 (1680-1960 AD)	M	B4a1a1c	CT	No	0.158	137,660	UDGhalf
TIAP004	French Polynesia, Ra'iatea	Molar	240-10	M	B4a1a1+16126	CT	No	0.072	66,227	noUDG

Sample Name	Country, Island	Anatomical element	cal BP (AD/BC) 95.4% (1710-1940 AD)	Sex	mtDNA haplogroup	Y chromosome haplogroup	Damage restrict	Mean coverage e1240K	SNPs 1240K	Library type
TON001	Tonga, Tongatapu	R petrous	2670-2320 (720-370 BC)	F	B4a1a1a	-	Yes	0.092	82,790	noUDG
TON002	Tonga, Tongatapu	L petrous	2690-2350 (740-400 BC)	M	B4a1a1	O1a1a1a	Yes	0.406	285,776	noUDG