



**HAL**  
open science

## **Sinyar and SBB (Central Sudanic): genetic relationship or contact?**

Pascal Boyeldieu

► **To cite this version:**

Pascal Boyeldieu. Sinyar and SBB (Central Sudanic): genetic relationship or contact?. *Linguistique diachronique et reconstruction : méthodes, acquis, avancées récentes*, Labex EFL, Jul 2013, Paris - Inalco, France. halshs-04579986

**HAL Id: halshs-04579986**

**<https://shs.hal.science/halshs-04579986v1>**

Submitted on 18 May 2024

**HAL** is a multi-disciplinary open access archive for the deposit and dissemination of scientific research documents, whether they are published or not. The documents may come from teaching and research institutions in France or abroad, or from public or private research centers.

L'archive ouverte pluridisciplinaire **HAL**, est destinée au dépôt et à la diffusion de documents scientifiques de niveau recherche, publiés ou non, émanant des établissements d'enseignement et de recherche français ou étrangers, des laboratoires publics ou privés.

**Sinyar and SBB (Central Sudanic): genetic relationship or contact?**


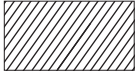
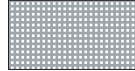

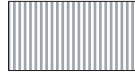

Pascal Boyeldieu (CNRS, Llacan) – boyeldieu@vjf.cnrs.fr

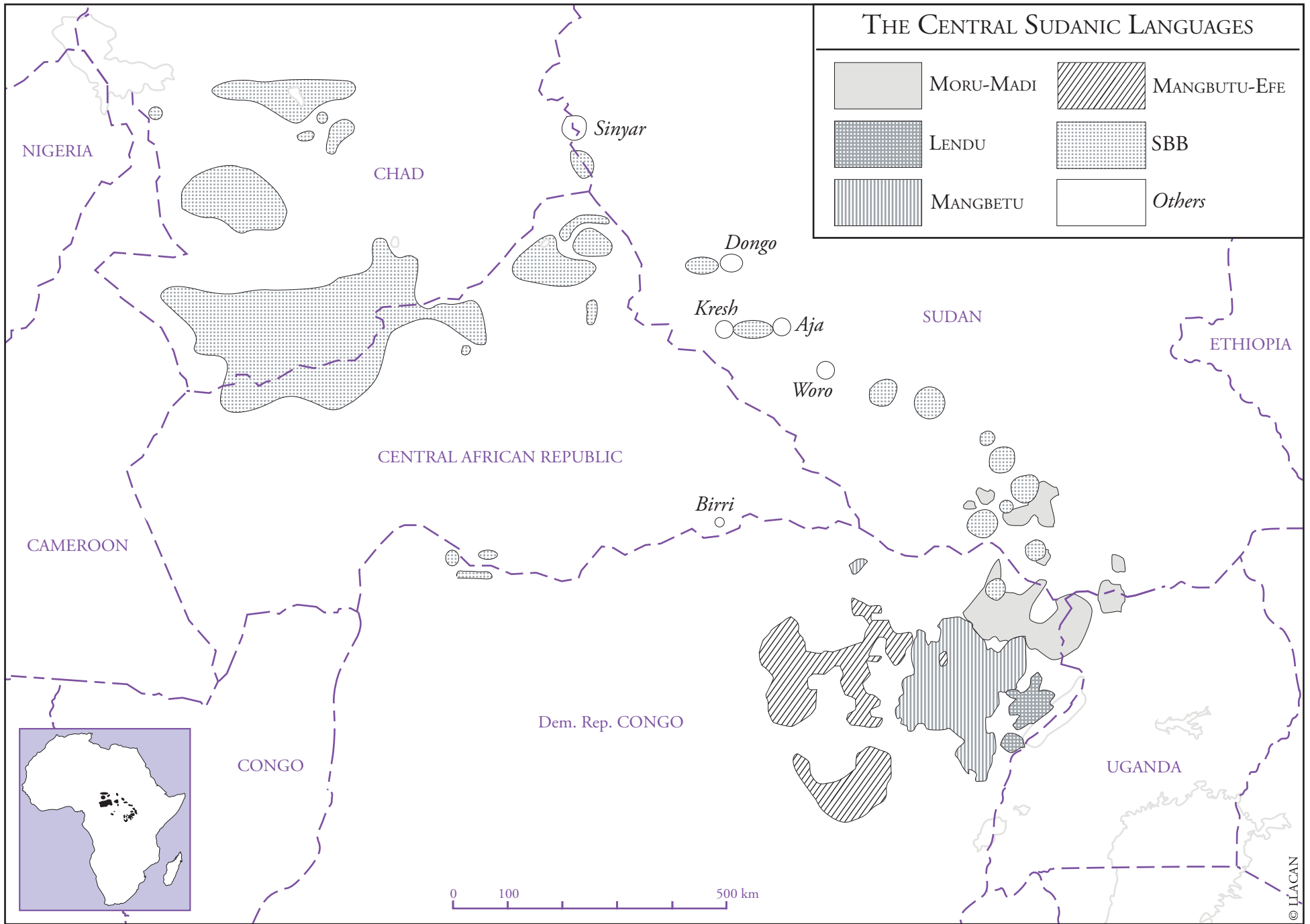
**1. Vocabulary**

Sinyar	Modo	Bongo	Yulu	Gula Zura	Sar	
wife/wije	ɔyɔ	fɔ	ɔofa	ɔjɔ	ɔja	<i>beget, to</i>
wèl	yàlɪ	hòlɪ	sáal(ə)	seɪ	yèɪ	<i>bird</i>
mbàár	mbà	màyà	ɔmb(ə)	mvà	mbà	<i>breast</i>
wille	ɔlè	yɔ	ɪlè	ɔy	ɔy	<i>die, to</i>
ɔisì	bɪ	bíhɪ'	bīs(ə)	ɔis	bísə	<i>dog</i>
iya	úwé	yé	ɔyá	áy	áy	<i>drink, to</i>
wij	ɔpɔ	pɔ	ɔpə	ɔpɔ	ɔo, ɔu	<i>eat, to</i>
kwòm	kɔmɔ	kɔmɔ	kāam(ə)	kām	kùm	<i>eye</i>
fɔdū	pàdɔ	fɔdɔ	vük(ə)	hād'	hòr	<i>fire</i>
kwùnjó	kénzɛ	kínjɪ	kɛnj(ə)	kānz	kānjə	<i>fish</i>
ìbì	bú	hìbú	kiit(ə)	kūb	yìbà	<i>grease, oil</i>
kòjjù	kàzɔ	lingè	ngāj(ə)	kàz	gàjə	<i>horn</i>
uŋŋa	úŋmá	(ngbá ?)	ɔŋə	ám	təngā	<i>hot, to be</i>
màá	má	má'	māa(nə)	mā	māā	<i>I</i>
ugol/ungol	ɪkàlɪ	ɔhitù	èedə.gāayə	ngɛɪ	gɛɪ	<i>know, to</i>
uɓa/umba	úɓà	ɓà	ɔɔɓə	ɔɓ	əɓà	<i>make a pot, to</i>
ìjjà	yɪdà	mèhì	ɛj(ə)	qā	dā	<i>meat</i>
tàar	kpà	kò, tàrà	tāa	tā	tā	<i>mouth</i>
èerè	mòyɪ	rɔ	cāa	rɔ	rɪ	<i>name</i>
ìccà	sà	cāa	ɛc(ə)	vāl	māng̃	<i>ox, cow</i>
kùfò	fɔ, kúpɔ	fɔ, kóhɔ	kɔof(ə)	kōhɔ	kō	<i>seed</i>
affa	àpà	àpà, àfà	āapə	ət	kàtə	<i>sharp, to be</i>
ànnà	ɔnà, kílákà	híɓà'ná	wāan(ə)	ndár	ndāɾ	<i>skin</i>
sudò/sunjo	ɔdɔ	dɔ	ndɔɔdə	tɔd'	tɔ	<i>sleep, to</i>
mùtɬà	mùtá	mùtá	mɔɔfà	mətá	mətá	<i>three</i>
kàggá	ŋgérɪ	kágá	kāag(ə)	kāg	kāgə	<i>tree</i>
ród	rɪyɔ	ngòrɪ	jɔoy(ə)	dɔ	jɔɔ	<i>two</i>
dè'e- who?	wádɪ	dɪ	āadɛ	dɪ	rɪ	<i>what?</i>

Table 1. Similar vocabulary: a selection (highlighting indicates cognates)

# THE CENTRAL SUDANIC LANGUAGES

	MORU-MADI		MANGBUTU-EFE
	LENDU		SBB
	MANGBETU		Others



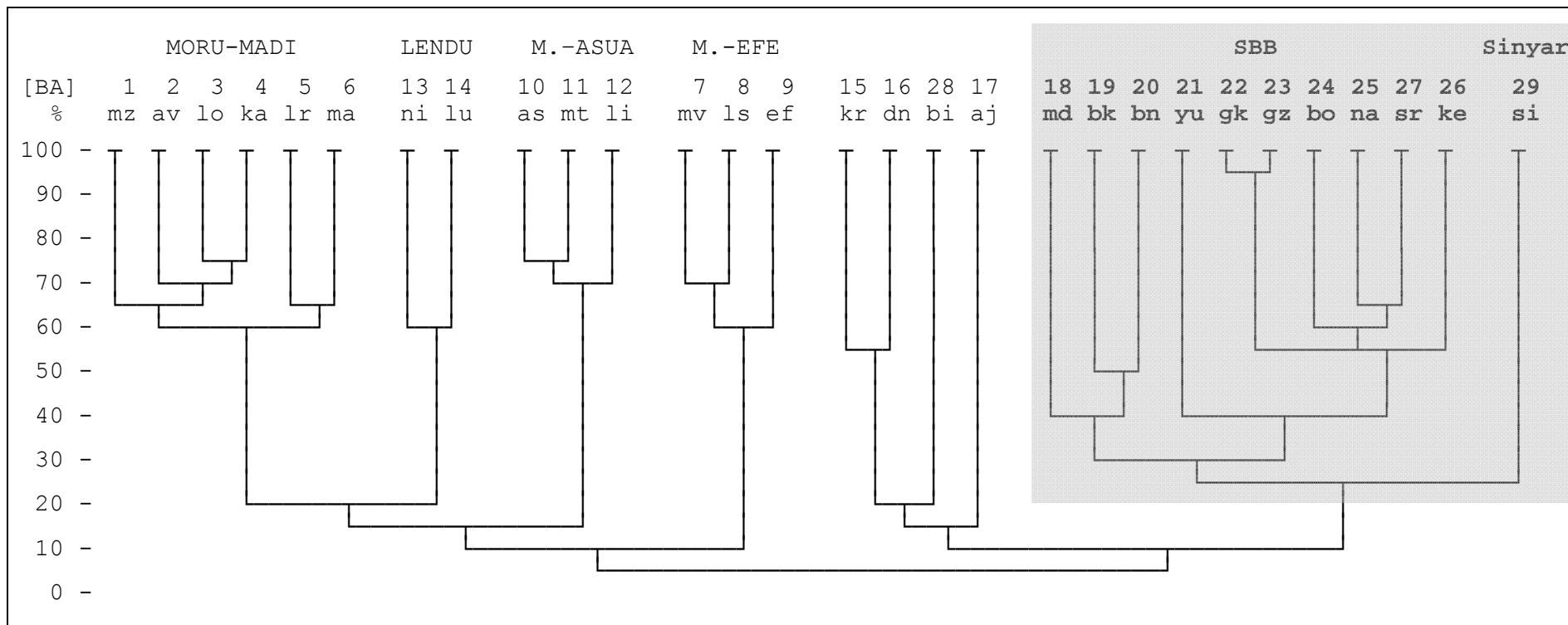


Table 2. Lexicostatistical distances for 29 Central Sudanic languages (based on a 100-word Swadesh list; Branch Average)

18	md	Modo	23	gz	Gula Zura	29	si	Sinyar
19	bk	Baka	24	bo	Bagiro			
20	bn	Bongo	25	na	Na			
21	yu	Yulu	27	sr	Sar			
22	gk	Gula Koto	26	ke	Kenga			

Sinyar	*SBB	Modo	Bongo	Yulu	Gula Zura	Sar	
f- fiyà firyà fií fòdú	*b- >	b- (bàpà ?)	b- bíná' bìí bòdú	b- í(ə) bàad(ə)	v- vɔɔ vɔɔ vād	b- bīyā bīyā bīī bòr	goat gruel, porridge hair warthog
-j(j)- kàjjà kùjá water, thirst wèrjí wirja/wirnja	*-d- >	-d- kàdà kùdà yàdí (ùdòdù ?)	-d- kàdà kùdà hèdí dà	-j- kàaj(ə) kòoj(ə) sáj(ə) èejā	-d- kád kéd kád, sád	-d- (kəndā ?) yèdā ədā	sun thirst urine tie, to

Table 3. Regular (?) correspondences

Sinyar	Modo	Bongo	Yulu	Gula Zura	Sar	
sìmir	tàgí	(tángá' ?)	māaj(ə)	tēj	tējē	bee, honey
kittì	òlù	lùtì	jíyà, tūlè/túlè	tál	ìl, ndùl	black, to be
kàjìbil	kòbì	kóbí	sòob(ə) dòog(ə)	dògā	dògā	buffalo
uwe/weep	ákú	áí	āayā	ē	rèè	come, to
cuggol	(àlú ?)	(əl(ú) ?)	èelā	īī	(dúù, lúú ?)	deep, to be
arfa	ùtùtù, (èlé, òlé)		njèʔó	ndùtù	tùtā, ày	dry, to be
- ùrà ear - ìi leaf	mbúí	mbíí	ēemb(ə)	mvi ear kámv` leaf	mbī ear kámbe leaf	ear, leaf
kártí	kèdē	kìdì	mòng(ə)	kéd	kèdā	elephant
- gwàar foot - kàffà leg	ndí, gbòndò	gbòndò	sìnj(ə)	kɔɔnz	njà	foot, leg
kàanà	mòlì	ndùmá	njòom(ə)	ngel	mù	grass
sùbó	dò	dò	jāa	dò	dò	head
mùsù	bó	bóo	ndāal(ə)	bō	bōo	hunger
wii	úpò	túnú	òofā	tēlē	təl	kill, to
jùggòl	òwò, àkpà	àkpà	òwā	ngāi	ngāi	long, to be
kwànjà	népé	níhí	nēep(ə)	lēhē	nā	moon
kwàalà	mùgù	gò	gòo	gō	míndè	neck
sìyèer	lāfā	kándá'	bāay(ə)	jā	kìjè	new
dìkittì	kòròndò	hìndò	gbāal(ə), kèjìyà	nónq	ndò	night

nàrmá	kànó	hòmò	sāam(ə)	ngóhō	kón	nose
– cé/céè – jíti	biláká	fí	káac(ə)	dēb	dēē	person
đi	bí	bì	gàa		lòo	place
kàđũ	kòngò	nũ	ĩn(ə)	nē	(yèe ?)	placenta
urba/urmba	úfó	fũ	bofá	ojó	əjò	plait, to
weeri (-ooru)	ácfí	écfí	āacđá	ēđ	ēđá	rain, to
abbal	āsí	əhí	écə	āc	(kāsə)	red, to be
kwàár	kàbí	kèbí		kāl	kəlá	rope
đúfú	kòtù	cúká <sup>+</sup>	ĩees(ə)	sà	sà	smoke
nđùbbòl	múré	kìràná	nāamb(ə)	ĩĩ	ĩĩ	snake
maggal/ mangal	úbògò	bùgù	wóogə	bògò, mòg	bògə	steal, to
gòl	ĩtú	ĩtú	kòt(ə)	kòt	mbàl	stone, grindstone
wicce (-ucce)	àfí, idíđí	kíđí	ná?ə	ēj	ùn	wet, to be

Table 4. Non-similar vocabulary: a selection

## 2. Personal pronouns

	Sinyar	*SBB	Modo	Bongo	Gula Zura
S1	màalé, (màá)	*má	má	má	mā
S2	illé	*(?)í	ní	í	ī
S3	nàalé, (nàá)	*nE ?	<i>masc.</i> bù <i>fem.</i> lòkú	<i>masc.</i> bá <i>fem.</i> hó <i>neutral</i> nà	ō
P1 excl./dual	<i>dual</i> cìngé ? cìyé	*jE	zé	jé	zē
P1 incl.	cèesá	*jE-PL			zēg
P2	? sìngé ? sèesá	*SE	kpé	hé	sē
P3	nìngé	*d/dE ?	lǐjé	yé	tē

Table 5. Independent personals (Sinyar: subject pronouns)

	Sinyar	*SBB	Modo	Bongo	Gula Zura
S1	m-	*m(ǎ)- H	m- H	m(í)-	m(ǎ)- H
S2	n-	*(í)- H	ø- H	(í)-	ø- H
S3	ø/w-	*ø- B	ø- B	<i>masc.</i> b(í)- <i>fem.</i> h(ó)- <i>neutral</i> (ù)-	ø- B
P1 excl./dual	c-	*d/j(ǎ)- B	d- B	j(í)- ~ -jé	z(ǎ)- B
P1 incl.	c-...-sà	*d/j(ǎ)- B ...-(?)			z(ǎ)- B ...-gǎ
P2	n-...-sà	*(í)- H ...-(?)	ø- H ...-ké	h(í)- ~ -hé	ø- H ...-gǎ
P3	ø...-(V)n	*ø- B ...-(?)	ø- B	y(í)-...-H	ø- B ...-gǎ

Table 6. Personal subject indices on verb (Aorist)

	Sinyar	Modo	Bongo	Gula Zura	Yulu	Sar
S1	m-úŋ	m-únyù	m-óʔŋ	m-ás̄	m-òosè	m-ésà
S2	n-úŋ	únyù	óʔŋ	ás̄	òosè	ésà
S3	wíŋ	ùnyù	<i>masc.</i> bóʔŋ <i>fem.</i> hóʔŋ <i>neutral</i> èŋ	às	òosè	èsà
P1 excl./dual	c-úŋ	d-ùnyù	j-óʔŋ ~ èŋ-jé	z-às	j-òosè	j-èsà
P1 incl.	c-úŋ-sà			z-às-gǎ	j-òosè-kē	j-èsà-ī
P2	n-úŋ-sà	únyù-ké	h-óʔŋ ~ óʔŋ-hé	ás̄-gǎ	òosè-kē	ésà-ī
P3	wíŋ-ín	ùnyù	y-óʔŋ	às-gǎ	òosè-kē	èsà-ñ

Table 7. Conjugations of verb 'to eat' (Aorist)

### 3. Verbal derivatives

i. Sinyar infinitive prefixed with **ø-** (consonant initial verbs) or **t-** (vowel initial verbs):

- (1) **ɖaar** 'look at' > inf. **ɖáár**  
**maggal/mangal** 'steal' > inf. **màggàl**  
**ika** 'seize' > inf. **t-íká**  
**urku** 'climb' > inf. **t-úrkú**

SBB languages derive infinitives with **ø-** (consonant initial verbs) or a consonant (modo **t-**, yulu **l-**, others **k-**) in case of vowel initial verbs:

- (2) Modo (no consonant initial verb)  
**unyù** 'eat' > inf. **t-únyù**  
Yulu  
**kēemō** 'fear' > inf. **kēem(ō)**  
**èedō** 'see' > inf. **l-èed(ō)**  
Gula Zura  
**túv̄** 'spit' > inf. **túv̄**  
**èt** 'open' > inf. **k-èt**

Sar  
**mbātá** ‘refuse’ > inf. **mbātá**  
**àsō** ‘fall’ > inf. **k-àsō**

ii. Sinyar derive adjectives by prefixing **k-** to vowel initial verbs:

- (3) **affa** ‘be sharp’ > **k-áffá** ‘sharp’  
**abbal** ‘be red’ > **k-àbbàl** ‘red’

This is probably also an old feature of SBB languages although the device has become lost (or frozen) and maybe merged with the **k-** formative of infinitives/nouns in many ‘western’ languages (like Gula Zura, Bagiro, and Sar):

- (4) Modò<sup>1</sup>  
**èyí** ‘be cold’ > **k-èyí** ‘cold’  
 Bongo  
**èmbì** ‘be fat’ > **k-èmbì** ‘fat’  
 Yulu  
**njèʔá** ‘dry up’ > **njèʔ(á)** ‘dry’  
**ēyà** ‘be wide’ > **k-ēy(à)** ‘wide’  
 Gula Zura  
**èd** ‘rain (v.)’ > **kéd** ‘rain (n.)’  
**āc** ‘be/become red, ripe’ > **kāc** ‘redness (?)’  
 Bagiro  
**àsū** ‘be bad’ > inf. **k-àsū**; **k-àsū** ‘badness, bad’  
 Sar  
**\*aKε** ‘be red’ > **kàsə** ‘brown red’

#### 4. Subject focalizer

Both Sinyar and Yulu share a verb prefix **k(V)-** to mark focus on the subject:

Sinyar

- (5) **mùsù-n**            **wìŋ-m'á-tá**  
 hunger:NOM:SG    hurt-S1:ACC-NEG  
 ‘I am not hungry.’

- (6) **ìngá-n**            **k-ùŋ-l'á**  
 what?:NOM:SG    FOC-hurt-S2:ACC  
 ‘WHAT does hurt you?’

Yulu

- (7) **bīisá**    **òosə**    **èjə**  
 doc:DEF    S3:eat    meat:DEF  
 ‘The dog ate the meat.’

- (8) **bīisá**    **k-òosə**    **èjə**  
 doc:DEF    FOC-eat    meat:DEF  
 ‘The DOG ate the meat.’

<sup>1</sup> Andersen (1981:48) analyses these forms as dependent verbs (prefixed with **k-**) that may be regarded as shortened relative clauses when used in this way.



## 5. Noun plural in (-ɲà) (Sinyar only)

Common plural marker **-ɲà** (cp. Fur?). May be dropped if number marked otherwise (irregular plural suffix **-aar** or plural case marker, see below). Examples:

- (9) **ɲà** /pl. **ɲà-ɲà** ‘thing’  
**gòl** /pl. **gòl-ɲà** ‘stone, grindstone’  
**kártí** /pl. **kártí-ɲà** ‘elephant’

## 6. Some noun plurals in -aar (Sinyar only)

Some nouns referring to animates have a special plural marker **-aar**. Examples:

- (10) **nímmí** /pl. **nìmàar(-ɲà)** ‘sister’  
**ngùbbò** /pl. **ngùbàar(-ɲà)** ‘old woman’  
**ɓìsì** /pl. **ɓìsàar(-ɲà)** ‘dog’  
**ɗòŋ** /pl. **ɗòŋàar(-ɲà)** ‘bull’  
**kòɗɗù** /pl. **kòdáar(-ɲà)** ‘ram’

## 7. Double radical-verbs (Sinyar only)

Some Sinyar verbs have two complementary radicals following a ‘non-past/past’ (or ‘imperfective/perfective’?) distribution of the TAM form. In most cases the 2<sup>d</sup> radical is characterized by some affixation of a nasal element. Examples:

- (11) **erbi/ermbi** ‘run’  
**sudò/sunjo** ‘lie (down)’  
**wife/wipe** ‘beget, bear’  
**ɗup/ndup** ‘crunch (fruit, vegetable)’  
**juwe/njuwe** ‘cut (with knife)’  
**ugo/ungon** ‘meet, find, get’

	‘to run’	‘to cut’	‘to find, get’
Present	<b>érbí</b>	<b>jùw<sup>è</sup></b>	<b>úgó<sup>ʌ</sup></b>
Future	<b>érbí</b> (= Present)	<b>júwé<sup>ʌ</sup></b>	<b>úgó<sup>ʌ</sup></b> (= Present)
Recent past (?)	<b>èrmb<sup>ʷ</sup></b>	<b>njúwé</b>	<b>ùngóp</b>
Far past 1 (?)	<b>èrmbìy<sup>ʷ</sup>à</b>	<b>njúwá<sup>ʷ</sup>à</b>	<b>ùngóŋ<sup>ʷ</sup>à</b>
Far past 2 (?)	<b>èrmbàándí</b>	?	?
Imperative (2 <sup>d</sup> sg.)	<b>èrb<sup>ʷ</sup></b>	<b>jùw<sup>è</sup> (?)</b>	<b>ùgò</b>
Prohibitive (2 <sup>d</sup> sg.)	<b>k-érbí-tá</b>	<b>kù-jùwè-t<sup>ʷ</sup>à</b>	<b>k-úgó-t<sup>ʷ</sup>à</b>

Table 8. Distribution of radicals according to TAM forms (3<sup>d</sup> pers. sg.)

## 8. Factitive verbs suffixed with -oo/-uu (Sinyar only)

Examples:

- (12) **anju** ‘not have’                      **anjuu** ‘let not have’  
**arfa** ‘be dry’                                **arfoo** ‘let dry, make dry’

<b>ette</b> ‘burn’	<b>ettoo</b> ‘let burn’
<b>icel</b> ‘be/become full’	<b>iceluu</b> ‘fill, make full’
<b>ndolle</b> ‘learn’	<b>ndooluu</b> ‘make learn, teach (ditransitive)’

### 9. Intensive/frequentative in -r- (Sinyar only)

Infix **-r-** (mostly frozen?) expressing intensivity or frequency of the process (active verbs).  
Examples:

- (13) ? > **arja/arnja** ‘show, explain’  
**dekke/ndekke** ‘kick, lash out’ > **derke/nderke** ‘kick (frequentative)’  
? > **erce** ‘whip’  
**uba/umba** ‘make, mould (pot)’ ? > **urba/urmba** ‘weave (basket, fishtrap, fit with ropes (bed)’  
? > **urgo/urngo** ‘wash (body, body part)’ (cp. SBB \*?**igbo** ‘wash’)  
? > **urku** ‘climb’ (cp. SBB \***oku**/\***eki** ‘climb’)  
? > **werji/wernji** ‘urinate’ (cp. SBB \***Sađi** ‘urinate’)  
? > **werse** ‘sew’ (cp. SBB \***isa**)  
? > **wirca** ‘(let) fry’ (cp. SBB \***EkE**/\***ika**/etc. ‘catch, seize’)  
? > **wirja/wirnja** ‘tie, bind’ (cp. SBB \***uđa** ‘bind, tie up’)  
? > **wirji/wirnji** ‘remain, stay, sit down’

### 10. Double case marker system (Sinyar only)

- i. Nominal phrases whose head = common noun (including interrogative ‘what?’):  
*unmarked* (= Absolute) / Nominative / Adverbial<sup>2</sup>

	Absolute form	Nominative	Adverbial
Sg.	<b>∅</b>	<b>-n / -Ni</b>	<b>-ti</b>
Pl.		<b>-si</b>	

Table 9. Case markers (postpositions) for common noun phrases

- ii. Nominal phrases whose head = proper name, deictic, or personal pronoun:<sup>3</sup>  
*unmarked* (= Absolute)<sup>4</sup> / Nominative / Genitive / Accusative / Adverbial

	Absolute form	Nominative	Genitive	Accusative	Adverbial
Sg.	<b>∅</b>	<b>-n / -lè</b>	<b>-na (L)</b>	<b>-(y)àa (H)</b>	<b>-lèe (H)</b>
Pl.		<b>-ngè (H)</b>		<b>-ngàá (H)</b>	<b>-ngèer (H)</b>

Table 10. Case markers (postpositions) for proper name phrases (and assimilated)

Proper names include:

- personal names (also personified animals), ‘God’, ‘chief’, ‘grandmother’, names of places, rivers, mountains, and countries;
- ‘who?’, ‘what’s-his/her-name, So-and-So’;

<sup>2</sup> Adverbial = locative, instrumental, and comitative.

<sup>3</sup> Deictics and personal pronouns have forms of their own that are not displayed here.

<sup>4</sup> Proper names only.

- some animal names: ‘(home) cat’, ‘(home) duck’, ‘fox’, ‘owl sp.’, ‘bird sp.’, ‘stork’, ‘locust sp.’ (2x), ‘chameleon’, ‘fish sp.’;
- points of the compass borrowed from Arabic.

Case markers usually distinct for number.

Appear at the end of the nominal phrase (order: head–modifiers) = postpositions.

Examples:

- (14) **kàjjà-n ámbíy'à**  
sun-NOM:SG 3:go:PF  
‘The time is over’ (lit. the sun has gone)
- (15) **bís-lè èrmbìy'à nùnnúù**  
cat-NOM:SG 3:run:PF far\_away  
The (our) cat run away.’
- (16) **àkìp'in kúurà**  
3:play:PL ball[Ar.]  
‘They play ball.’
- (17) **nààlé fùggòl.bí Zàkàríyàa**  
S3:NOM 3:be\_tall.pass Zakariya:ACC:SG  
‘He is taller than Zakariya.’
- (18) **ḃáà-ḡà Kùnyaa-nà-sì wèèḡinn'aa firàangà**  
father-PL Kunyaa-GEN:SG-NOM:PL 3:come:PL:PF yesterday  
‘Kunyaa’s fathers have come yesterday.’

## 11. Genetic relationship or contact: which historical scenario?

SBB-like	SBB-unlike
<ul style="list-style-type: none"> <li>• part of the lexicon (including ‘basic’)</li> <li>• part of the personal pronouns</li> <li>• personal indices 2 &amp; 3 distinguished for number plural suffixes on the verb</li> <li>• infinitive in <b>t-</b> (?) (vowel-initial verbs)</li> <li>• adjectives in <b>k-</b> (vowel-initial verbs)</li> <li>• subject focalizer in <b>k(V)-</b></li> </ul>	<ul style="list-style-type: none"> <li>• part of the lexicon (including ‘basic’)</li> <li>• no tonal alternation on verbs</li> <li>• noun plural in (<b>-ḡà</b>)</li> <li>• some noun plurals in <b>-àar</b> (animates)</li> <li>• many double (related) radicals for verbs</li> <li>• Intensive/frequentative in <b>-r-</b></li> <li>• factitive verbs suffixed with <b>-oo/-uu</b></li> <li>• double case marker system</li> </ul>

Table 11. Summary: Sinyar features compared to SBB

2 historical hypotheses:

- Sinyar is a historically SBB language (substrate = SBB) that came into contact with another language/group of languages (but which one?) and consequently
  - replaced part of its lexicon,
  - lost the tonal alternations on verbs,
  - acquired new morphological features (nominal plurals, double verb radicals, original factitives),
  - integrated a double system of case markers (including several sets of deictics and personal pronouns according to case).

- ii. Sinyar is a historically foreign language (substrate unidentified) that came into contact with SBB languages (more likely of the Yulu-Gula type, its actual neighbours) and consequently
- replaced part of its lexicon while preserving its own ways of marking plural nouns,
  - integrated part of the SBB personal pronouns/indices and verb morphology (namely verb plural, infinitive, adjectives, subject focalizer), but did not acquire verb tonal alternations and preserved a specific part of the verb morphology (some double radicals, factitive),
  - preserved its own system of case marking.

In the current state of things, and without any clue concerning the possible socio-historical development of these languages, it is uncertain which explanation is the most likely. The following elements should be investigated more deeply:

- origin/affiliation of the non-SBB vocabulary (if not an isolate?),
- tonal systems (Sinyar has a two-tone system with numerous downstepped Lows; ‘western’ SBB languages have no less than three distinctive levels); tone classes of Sinyar verbs correspond to some extent to those of the SBB languages; tonal identity of Sinyar nouns needs further study,
- distribution of similar vocabulary within SBB,
- specific form of the similar lexical units, that sometimes display features not compatible with regular correspondences.

### Glosses and abbreviations

ACC	Accusative	FOC	Focalizer (of subject)	PF	Perfective
Ar.	Arabic	GEN	Genitive	PL	Plural
DEF	Definite	incl.	inclusive	S2	2 <sup>d</sup> person sing.
excl.	exclusive	masc.	masculine	S3	3 <sup>d</sup> person sing.
fem.	feminine	NOM	Nominative	SG	Singular

### References

- Andersen T., 1981, *A Grammar of Modo, A Preliminary Sketch*, University of Aalborg (Denmark).
- Boyeldieu P., 2000, *La langue bagiro (République Centrafricaine), Systématique, textes et lexique*, Frankfurt am Main, Peter Lang, (Schriften zur Afrikanistik/Research in African Studies, 4).
- Boyeldieu P. et P. Nougayrol, 2004, Les marques personnelles des langues SBB : traits systématiques et perspectives historiques, *Systèmes de marques personnelles en Afrique* (D. Ibrizimow et G. Segerer édés), Louvain-Paris, Peeters (Afrique et Langage), 23-42.
- Boyeldieu P., P. Nougayrol & P. Palayer, 2006, *Lexique comparatif historique des langues sara-bongo-baguirmiennes*, Paris, CNRS-LLACAN (document électronique) : [<http://sumale.vjf.cnrs.fr/SBB/>]
- Doornbos P. & M.L. Bender, 1983, Languages in Wadai-Darfur, *Nilo-Saharan Language Studies* (M.L. Bender ed.), East Lansing, Michigan State University (African Studies Center), 42-79.
- Nougayrol P., 1999, *Les parlers gula (Centrafrique, Soudan, Tchad), Grammaire et lexique*, Paris, CNRS Editions.
- Palayer P., 1970, (avec la collaboration de M. Fournier et E. Moundo), *Eléments de grammaire sar (Tchad)*, Lyon-Fort-Archambault, Afrique et Langage-Collège Charles Lwanga (Etudes linguistiques 2).
- Palayer P., 1992, *Dictionnaire Sar-Français (Tchad)*, Paris, Geuthner.