



**HAL**  
open science

## Distribution in Gaul of amphorae produced in Fondi / Southern Latium in the Second Iron Age

S. Lemaître, Gisela Thierrin-Michael, Valérie Thirion-Merle

► **To cite this version:**

S. Lemaître, Gisela Thierrin-Michael, Valérie Thirion-Merle. Distribution in Gaul of amphorae produced in Fondi / Southern Latium in the Second Iron Age. European Meeting on Ancient Ceramics (EMAC2023), Jun 2023, Pise, Italy. . halshs-04591939

**HAL Id: halshs-04591939**

**<https://shs.hal.science/halshs-04591939v1>**

Submitted on 29 May 2024

**HAL** is a multi-disciplinary open access archive for the deposit and dissemination of scientific research documents, whether they are published or not. The documents may come from teaching and research institutions in France or abroad, or from public or private research centers.

L'archive ouverte pluridisciplinaire **HAL**, est destinée au dépôt et à la diffusion de documents scientifiques de niveau recherche, publiés ou non, émanant des établissements d'enseignement et de recherche français ou étrangers, des laboratoires publics ou privés.

# Distribution in Gaul of amphorae produced in Fondi / Southern Latium in the Second Iron Age



Séverine Lemaître<sup>1</sup>, Gisela Thierrin-Michael<sup>1,2</sup>, Valérie Thirion-Merle<sup>3</sup>

<sup>1</sup>University of Poitiers HERMA; <sup>2</sup>University of Fribourg, department of geosciences, Switzerland; <sup>3</sup>CNRS, ArAr, UMR 5138 laboratoire de céramologie Lyon



## Outset

In the Fondi plain on the tyrrhenian coast of Italy, several amphora production sites have been discovered in the 1970s and sherds collected in a land survey (Hesnard et al. 1989). As some of the stamps on sherds among the Fondi production were identical to those on amphorae found in the shipwreck La Madrague de Giens off the French Mediterranean Coast, large wine imports to Gaul from the region of Fondi were assumed.

Comparisons to the amphorae from oppida along the Mediterranean coast and those of other late Iron Age and early Roman consumer sites on the Rhone-Rhine axis between Lyon and Basle / Augst did not reveal the expected large numbers of Fondi amphorae.

## Reference groups



12 analytically well-defined Dressel 1 amphorae production sites on the Tyrrhenian coast of Italy. From Albinia to Pompei, fabrics contain inclusions characteristic of the volcanic region of Central Italy.

Different fabric types:

- predominantly light inclusions (mostly sanidine among volcanic inclusions)
- black sand (mainly well sorted dark volcanic inclusions)
- others (various inclusions)

Differentiation by combining chemical composition and petrographic characteristics.

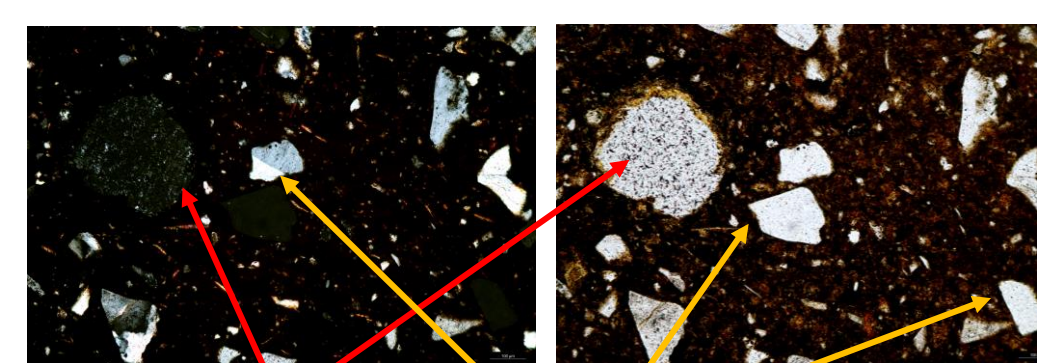
## ITIVIN Project

Recent analyses carried out in the framework of the ITIVIN project concerned with the multidisciplinary comparative study of amphorae from sites in Western Gaul allowed attributing a more significant proportion of amphorae to the Fondi production among the imported amphorae. Results for three sites are presented here, studies are ongoing for other sites.

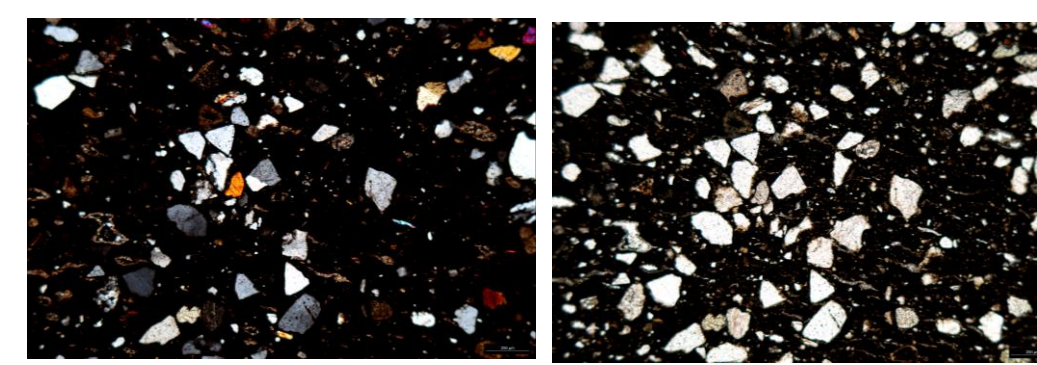
## Analytical methods

- Macroscopic fabric analyses
- Petrographic analyses by polarization microscopy on thin sections
- chemical analyses by WD-XRF

## Amphora production at Fondi



pumice (rare) and sanidine (characteristic) left crossed polars, right single polar

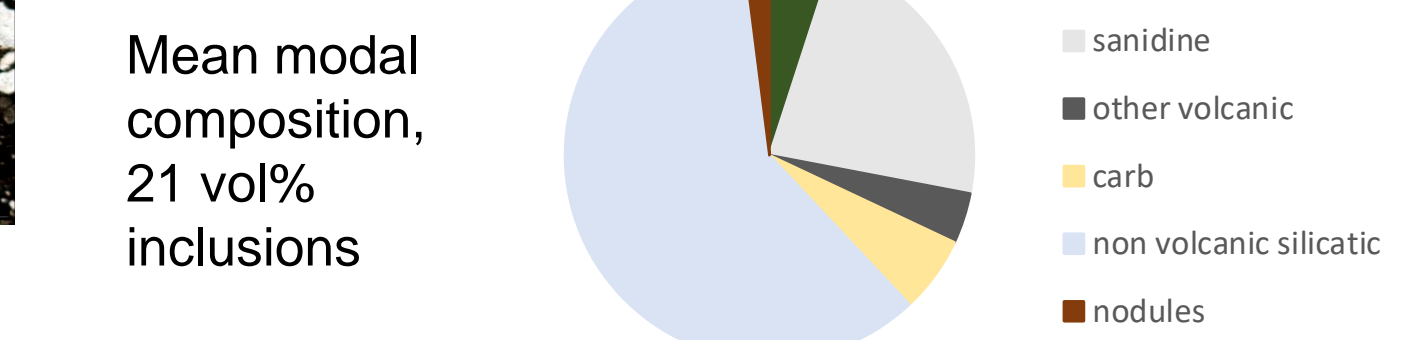


Representative example of Fondi fabric under the microscope

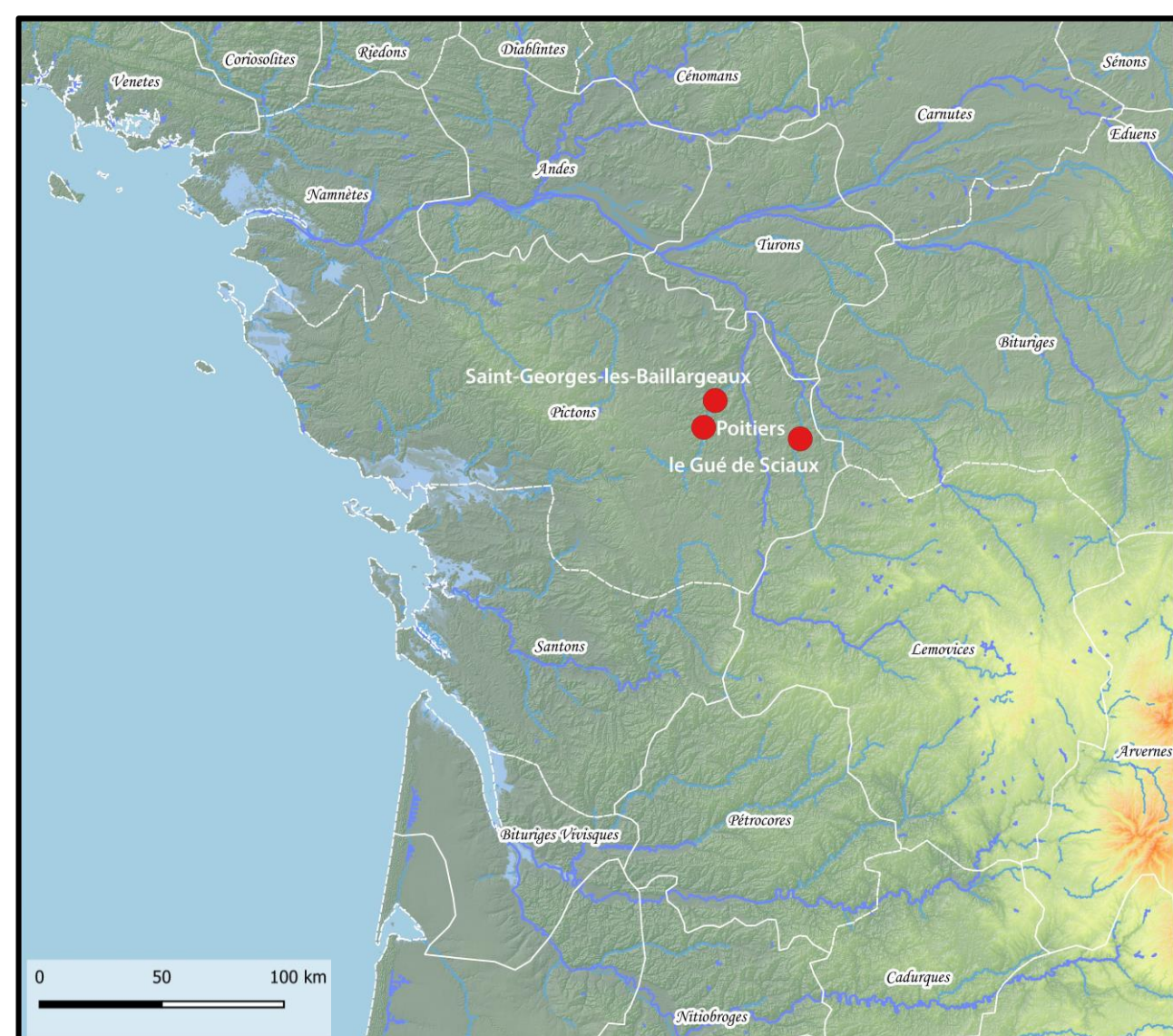
Reference group constituted of 50 samples from several workshops around lake Fondi (Hesnard et al. 1989, Thierrin-Michael 1992).



Fabric characterized by predominantly light inclusions.



## Consumer sites in Western Gaul

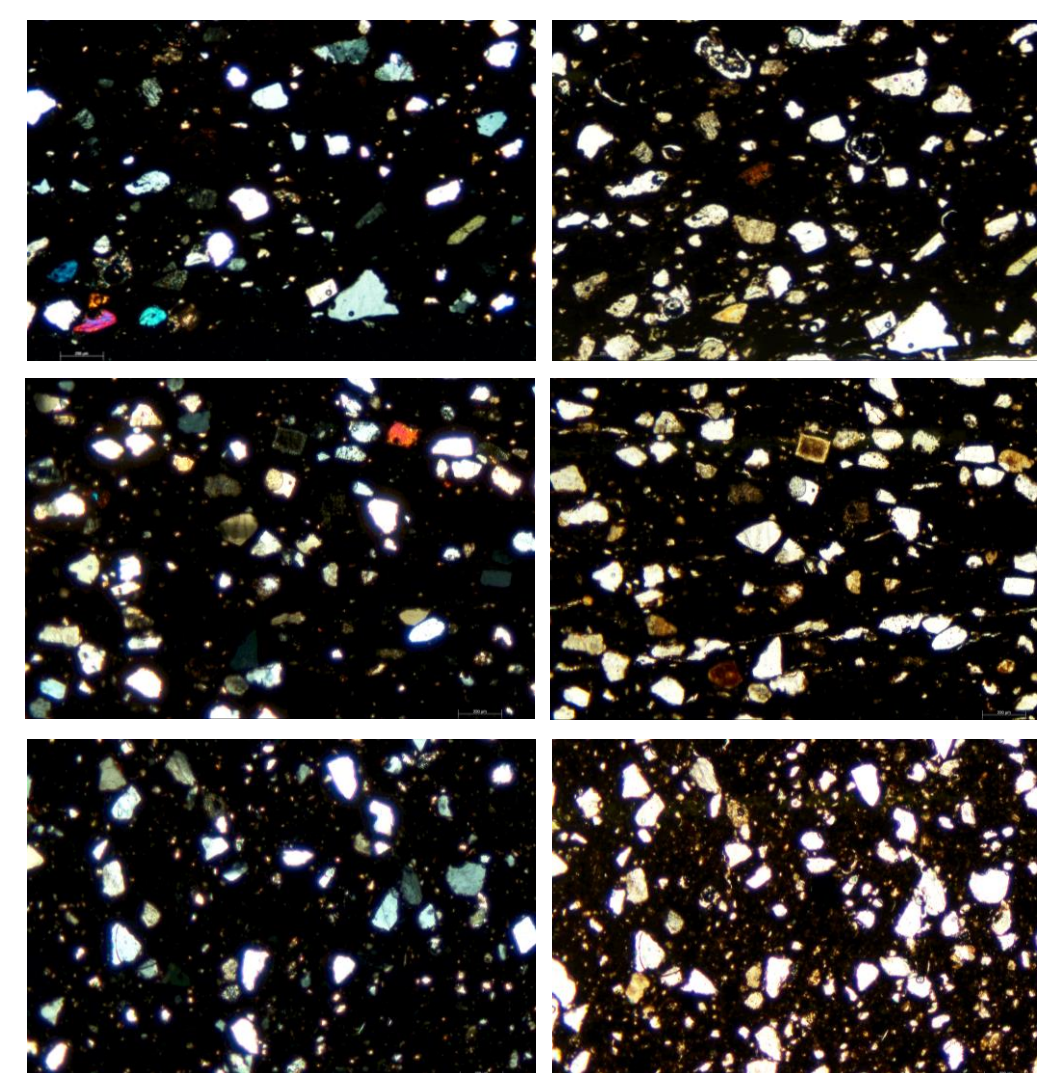


Selected sites:

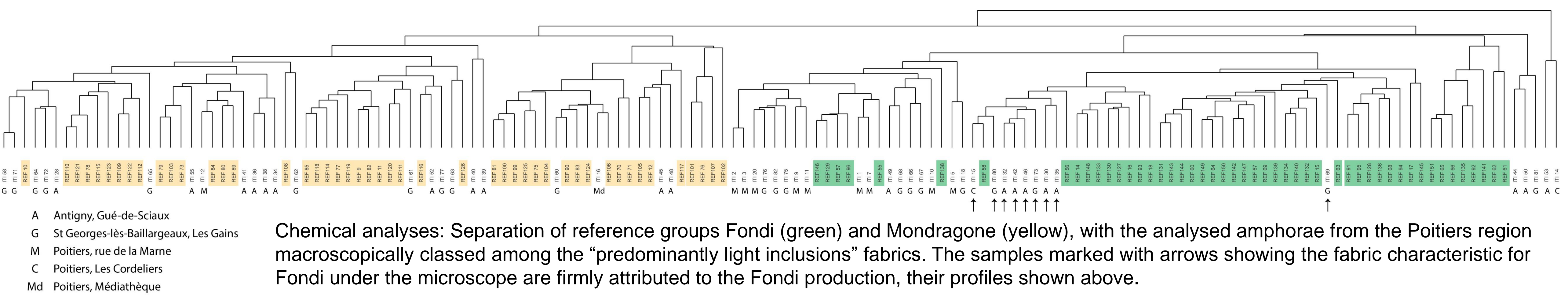
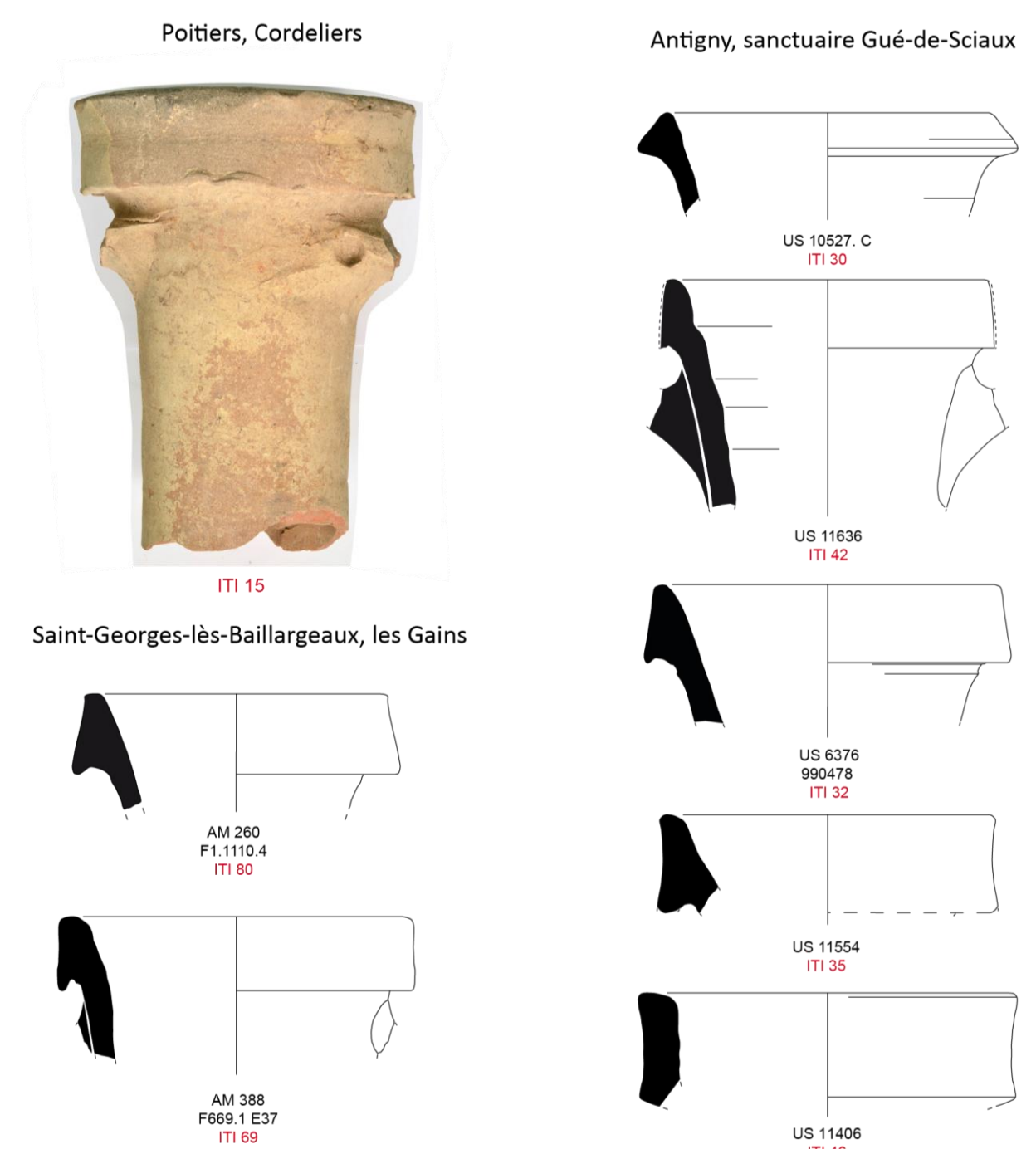
- Poitiers (M, Md, C), urban agglomeration
- Antigny (A), Gué de Sciaux, sanctuary
- St Georges-lès-Baillargeaux (G), rural site

The majority of amphorae from these sites show fabrics with predominantly light inclusions, containing characteristic volcanic minerals of Central Italy. Comparison with the references reveals not only the presence of amphorae from Mondragone but also from **Fondi**.

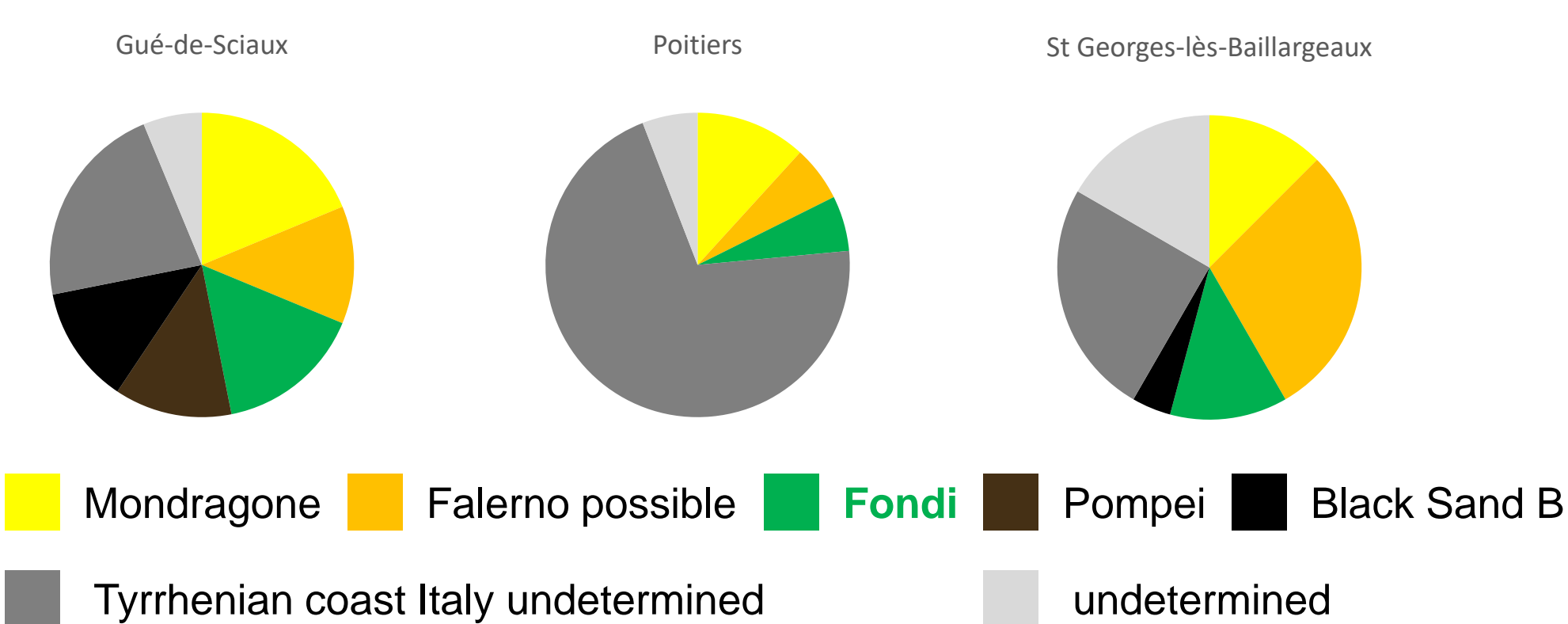
## Attributions to Fondi



Examples of same fabric on 3 sites



## Proportion of attributions to Fondi



Amphorae from Fondi constitute up to 16 % of the analysed sample. This makes Fondi the second most important provenance after the Mondragone/Falerno region (Northern Campania) for the wine consumed on the selected sites. While the undetermined origins represent considerable portions in total, the amphorae in that category do not form large uniform groups consistent with a single origin.

## Southern and Eastern Gaul

No attributions to Fondi for amphorae from Second Iron Age sites along the Mediterranean coast and on the Rhone-Rhine axis (Thierrin-Michael et al. 2005; Martin-Kilcher et al. 2013): examples of classification clusters with amphorae of fabric "predominantly light inclusions" and the Fondi reference group show the clear separation.

Literature  
Hesnard Antoinette, Ricq Monique, Arthur Paul, Picon Maurice, Tcherna André (1989) : Aires de production des gréco-italiques et des DR. 1. In: Amphores romaines et histoire économique. Dix ans de recherche. Actes du colloque de Sienne (22-24 mai 1986) Rome : École Française de Rome, 1989, pp. 21-65. (Publications de l'École française de Rome, 114)  
Martin-Kilcher S., Deschler-Erb E., Roth-Zehner M., Spichtig N., Thierrin-Michael G. (2013) : Les importations dans la civitas Rauracorum. Bâle-Gasfabrik, Sausheim, Sierentz, Bâle-Münsterhügel, Augst. In: Olmer F. (ed.): Actes du colloque européen « Itinéraires des vins romains en Gaule (IIIe-1er siècles avant J.-C.). Confrontations de faciès », 30 janvier - 2 février 2007, Musée H. Prades à Lattes. Lattes, Monographies d'archéologie Méditerranéenne, Hors-série 5, 377-422.  
Thierrin-Michael, G., V. Thirion-Merle, G. Maza (2005): Banquets celtiques: L'apport des analyses d'amphores à vin. In L.Rivet (éd.): SFECAQ, Actes du congrès de Blois 2005, Marseilles, 741-752.  
Thierrin-Michael, G. (1992): Römische Weinamphoren: Mineralogische und petrographische Untersuchungen zur Klärung ihrer Herkunft und Herstellungsweise. - PhD thesis, Univ. Freiburg Nr. 977, 1990, 215 p.

